

Supplementary Table 1. List of specimens

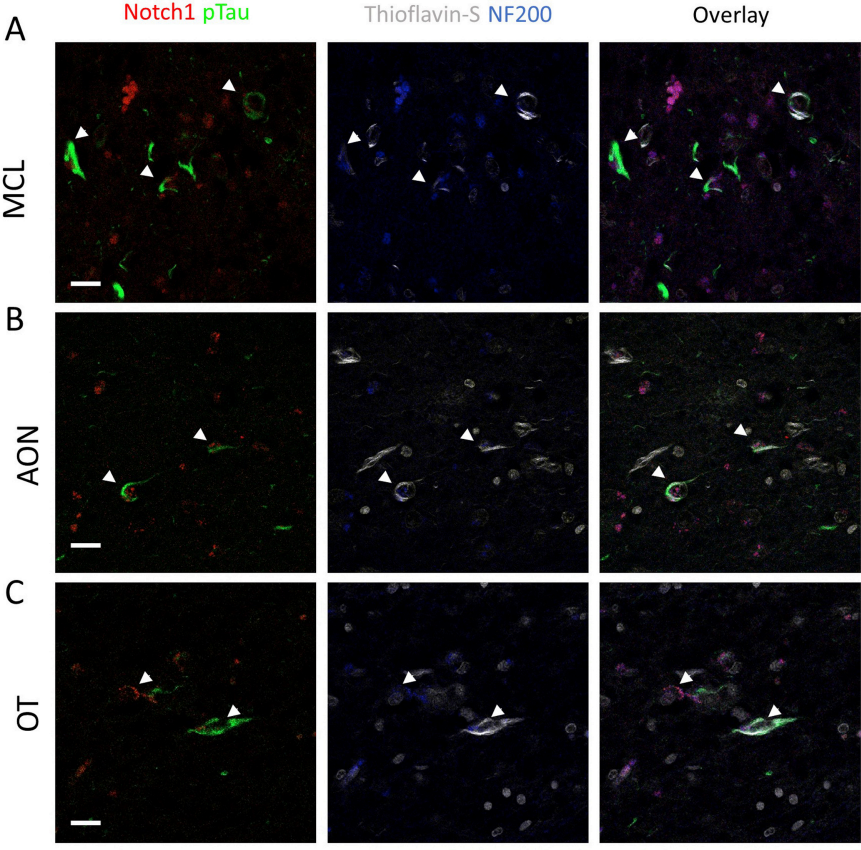
NP ID	Age	Sex	Braak	CERAD	Latest MMSE	Group	OB	OT	AON	IHC	FIHC	Density	Diameter
NP 12/132	67	F	1	no plaques	not available	CTL	+	+	+	+	+	+	+
NP 12/161	69	M	1	no plaques	not available	CTL	-	+	-	+	+	+	+
NP 13/074	70	F	1	no plaques	not available	CTL	+	+	+	+	+	+	+
NP 13/081	70	M	1	no plaques	not available	CTL	+	+	+	+	+	-	-
RI 04/079	84	F	1	no plaques	not available	CTL	+	+	+	+	+	+	+
RI 04/110	86	M	1	no plaques	not available	CTL	+	+	+	+	+	+	+
RI 04/158	83	M	0	no plaques	not available	CTL	-	+	-	+	+	-	-
RI 03/205	84	F	1	no plaques	not available	CTL	+	+	-	+	+	+	+
RI 03/211	85	M	0	no plaques	not available	CTL	+	+	+	+	+	+	+
B 1208	72	M	0	no plaques	not available	CTL	-	+	-	+	+	+	+
NP 15/008	87	F	2	no plaques	28/30	MCI	+	+	+	+	+	+	+
NP 15/067	87	F	2	no plaques	29/30	MCI	-	+	-	+	+	-	-
NP 16/059	94	M	3	sparse neuritic plaques	not available	MCI	+	+	+	+	+	+	+
NP 15/131	88	F	3	sparse neuritic plaques	26/30	MCI	+	+	+	+	+	+	+
NP 15/065	90	F	3	no plaques	26/30	MCI	-	+	-	+	+	-	-
NP 14/092	96	F	3	no plaques	28/30	MCI	-	+	-	+	+	-	-
NP 16/086	94	F	2	no plaques	22/30	MCI	-	+	-	+	+	+	+
RI 04/015	81	M	2	no plaques	26/30	MCI	+	+	+	+	+	+	+
RI 04/043	85	F	3	no plaques	not available	MCI	+	+	+	+	+	+	+
NP 13/160	88	F	4	not available	20/30	Moderate	+	+	+	+	+	+	+
NP 13/163	89	F	4	moderately dense plaques	24/30	Moderate	+	+	-	+	+	+	+
NP 14/003	93	M	4	highly dense plaques	30-Aug	Moderate	+	+	+	+	+	+	+
NP 14/010	88	M	4	highly dense plaques	30-Dec	Moderate	+	+	-	+	+	+	+
NP 15/099	83	M	4	moderately dense plaques	30-Oct	Moderate	+	+	-	+	+	-	-
NP 14/127	89	F	4	highly dense plaques	26/30	Moderate	+	+	+	+	+	+	+
NP 15/022	95	M	4	moderately dense plaques	14/30	Moderate	+	+	-	+	+	+	+
RI 05/014	87	M	4	sparse plaques	not available	Moderate	+	+	-	+	+	+	+
NP 14/115	75	M	5	highly dense plaques	0/30	Severe	+	+	+	+	+	+	+
NP 14/151	72	M	6	highly dense plaques	0/30	Severe	+	+	+	+	+	+	+
NP 14/109	78	M	6	highly dense plaques	0/30	Severe	-	+	-	+	+	+	+
NP 14/105	87	F	5	highly dense plaques	0/30	Severe	+	+	+	+	+	-	-
NP 14/076	95	F	5	highly dense plaques	0/30	Severe	-	+	-	+	+	-	-
NP 14/054	77	M	6	highly dense plaques	0/30	Severe	+	+	-	+	+	-	-
NP 14/050	82	F	6	highly dense plaques	0/30	Severe	+	+	+	+	+	+	+
NP 14/034	87	F	6	highly dense plaques	0/30	Severe	+	+	+	+	+	+	+
NP 14/033	77	F	5	highly dense plaques	0/30	Severe	+	+	-	+	+	-	-
NP 13/165	98	F	5	highly dense plaques	0/30	Severe	+	+	-	+	+	+	+
NP14/128	61	f	6	highly dense plaques	not available	Severe	+	+	+	+	+	+	+

MMSE= minimal mental score evaluation; CERAD=Consortium to Establish a Registry for Alzheimer’s Disease; OB= olfactory bulb; OT= olfactory tract; AON= anterior olfactory nucleus. In CERAD, plaques refer to neuritic plaques.

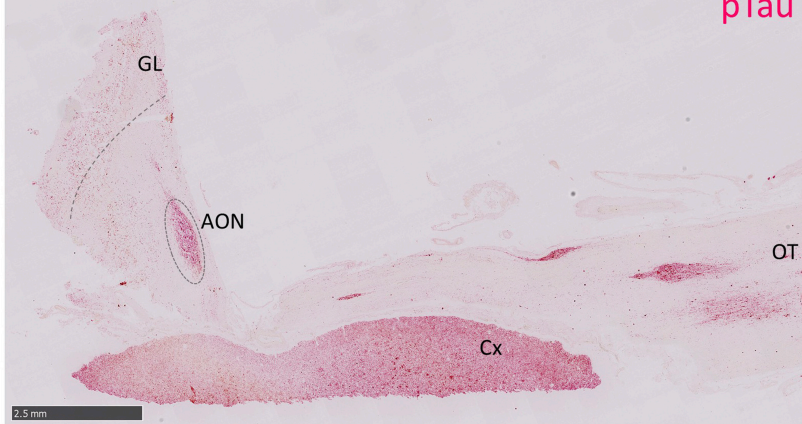
Supplementary Table 2. Co-localization of Jagged1, Reelin and Notch1 puncta in CA1.

Staging	Jag1: Reelin (MCC)	Notch1: Reelin (MCC)	Notch1:Jag1 (MCC)
<i>CTL</i>	0.49±0.31	0.57±0.07	0.07±0.02
<i>MCI</i>	0.42±0.37	0.43±0.24	0.25±0.25
<i>Moderate AD</i>	0.47±0.29	0.53±0.07	0.12±0.02
<i>Severe AD</i>	0.53±0.29	0.58±0.16	0.30±0.25

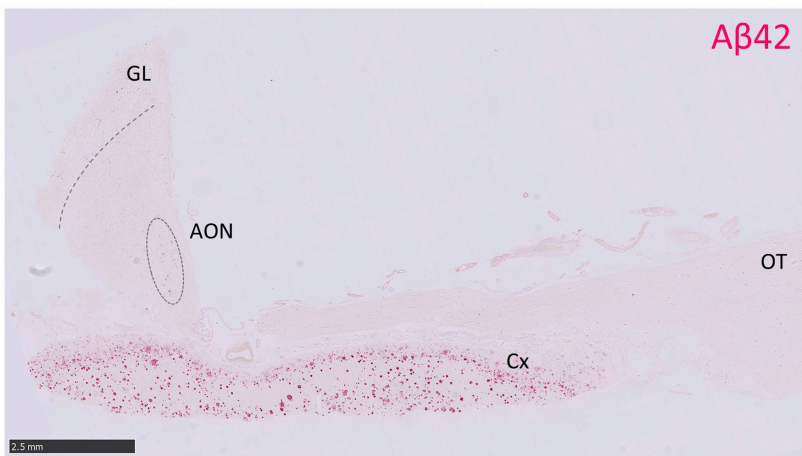
MCC=Mander's correlation coefficient



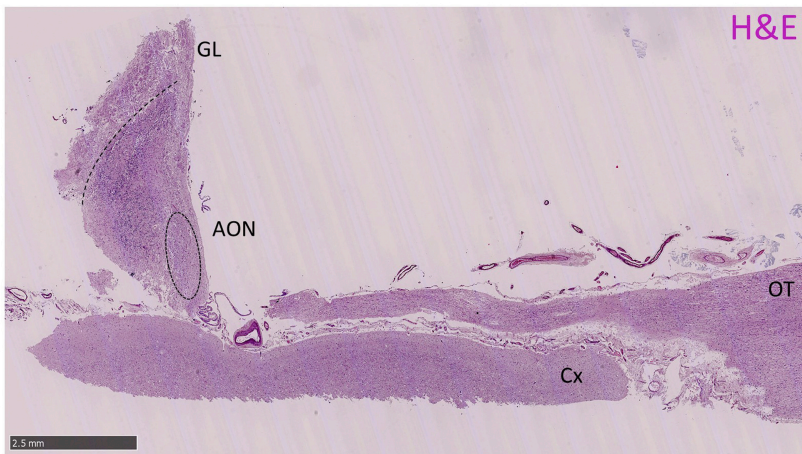
A

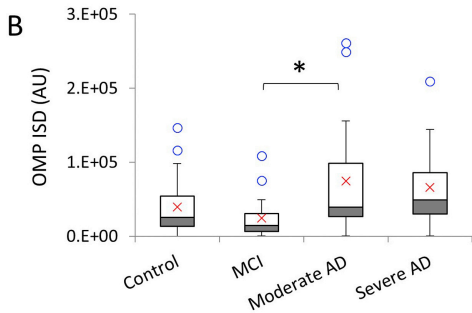
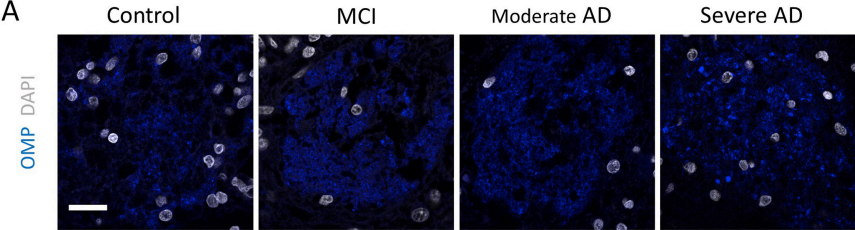


B

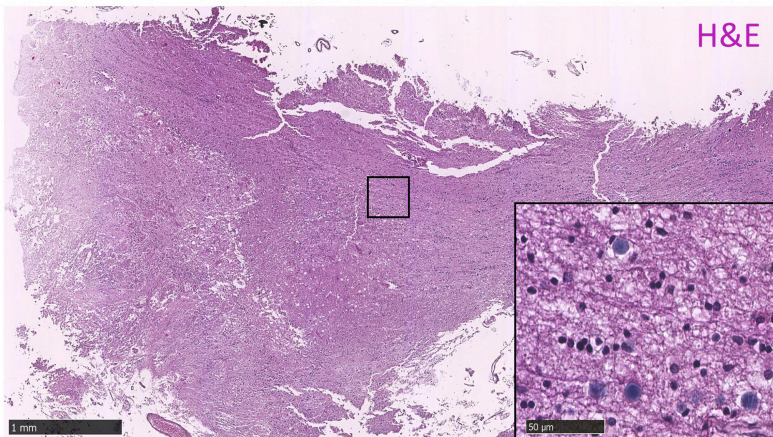


C

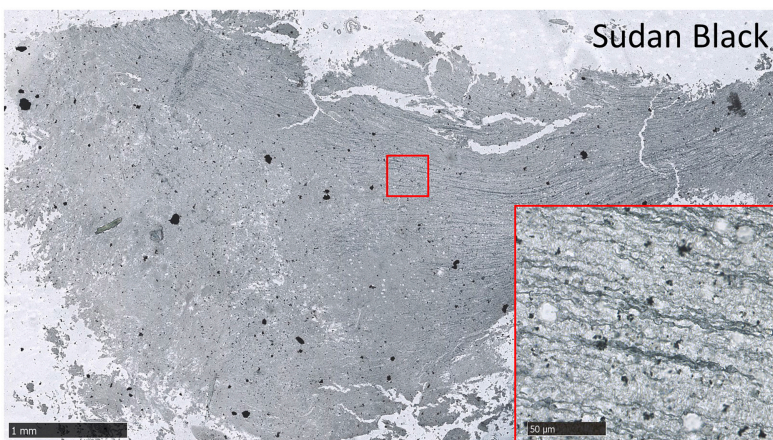




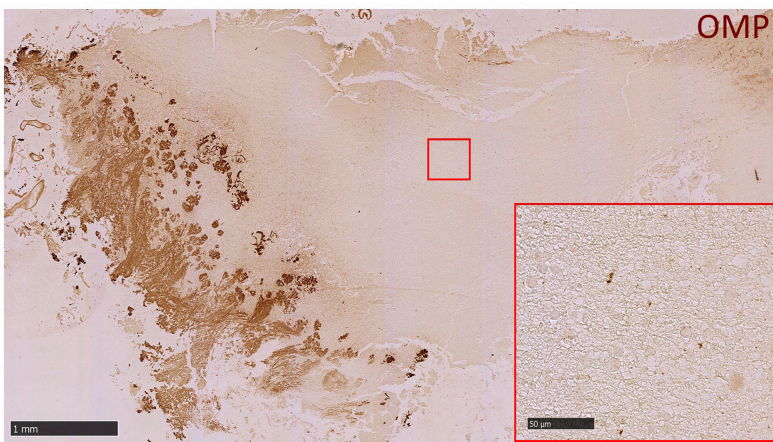
A



B

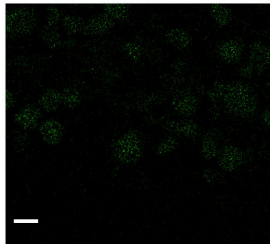


C

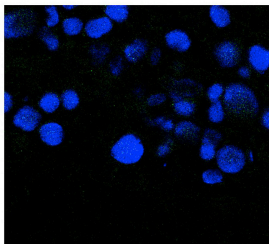


A

Jag1

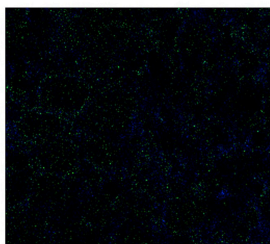


Jag1 MAP2



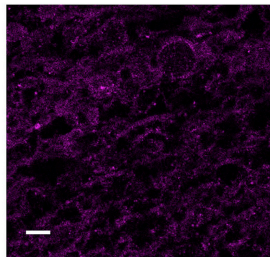
A'

Secondary CTL

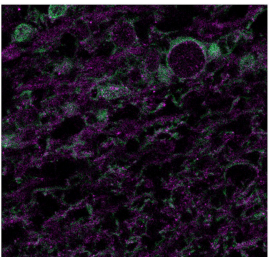


B

Reelin

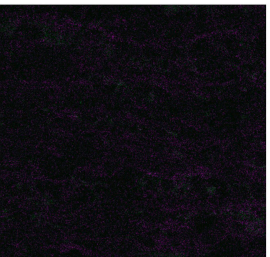


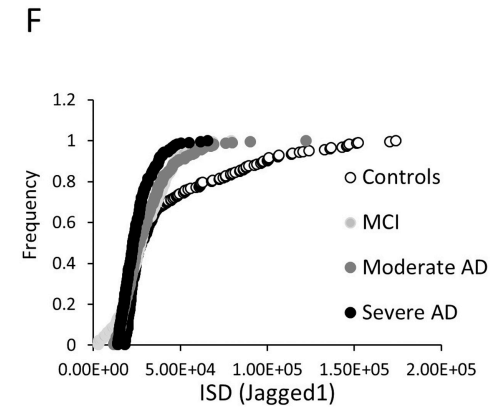
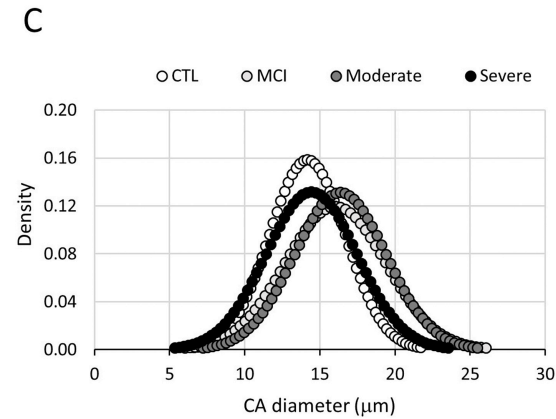
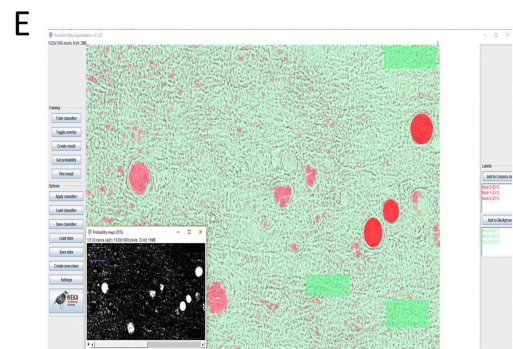
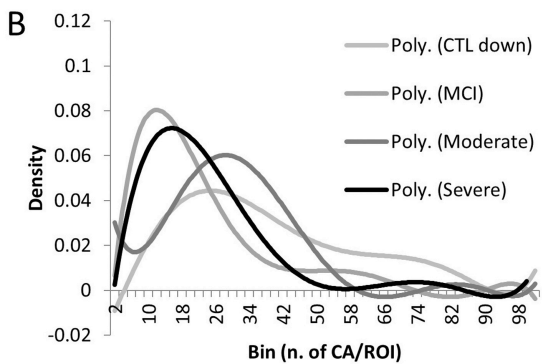
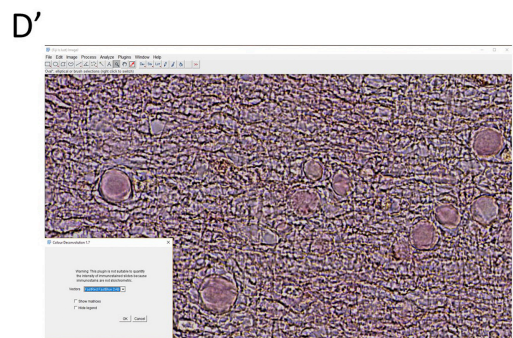
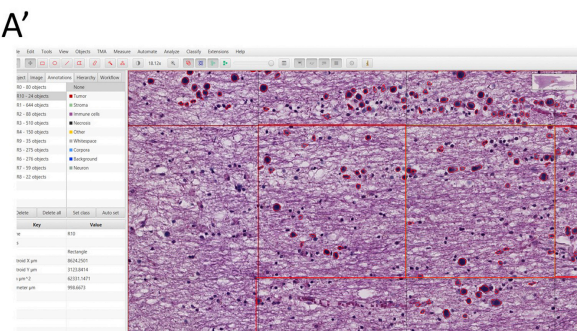
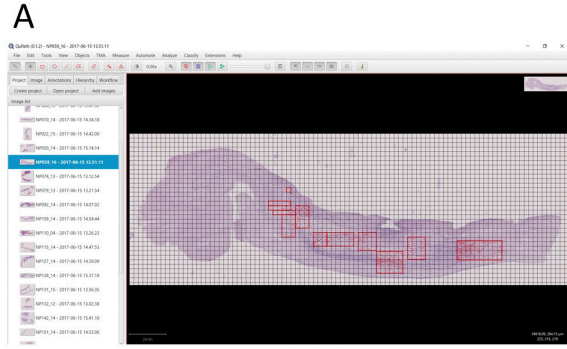
Reelin Tau



B'

Secondary CTL





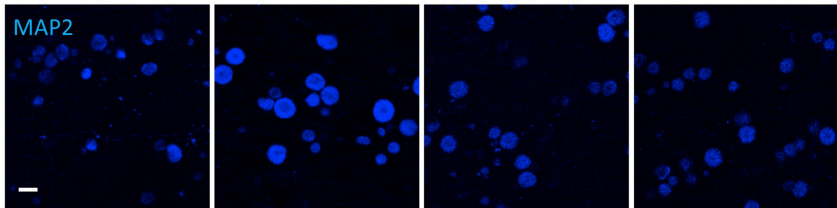
A

CTL

MCI

Moderate AD

Severe AD



B

