



Pressure Induced Effects During in situ Characterization of Supported Metal Catalysts

Nielsen, Monia Runge; Wagner, Jakob Birkedal; Damsgaard, Christian Danvad; Schumann, Max; Jensen, Anker Degn; Christensen, Jakob Munkholt; Hansen, Thomas Willum

Publication date:
2018

Document Version
Peer reviewed version

[Link back to DTU Orbit](#)

Citation (APA):
Nielsen, M. R., Wagner, J. B., Damsgaard, C. D., Schumann, M., Jensen, A. D., Christensen, J. M., & Hansen, T. W. (2018). Pressure Induced Effects During in situ Characterization of Supported Metal Catalysts. Abstract from 69th Annual Conference of the Nordic Microscopy Society, Kgs. Lyngby, Denmark.

General rights

Copyright and moral rights for the publications made accessible in the public portal are retained by the authors and/or other copyright owners and it is a condition of accessing publications that users recognise and abide by the legal requirements associated with these rights.

- Users may download and print one copy of any publication from the public portal for the purpose of private study or research.
- You may not further distribute the material or use it for any profit-making activity or commercial gain
- You may freely distribute the URL identifying the publication in the public portal

If you believe that this document breaches copyright please contact us providing details, and we will remove access to the work immediately and investigate your claim.

Pressure Induced Effects During *in situ* Characterization of Supported Metal Catalysts

Monia R. Nielsen*¹, Jakob B. Wagner¹, Christian D. Damsgaard^{1,2}, Max Schumann³, Anker D. Jensen³, Jakob M. Christensen³ and Thomas W. Hansen¹

¹Center for Electron Nanoscopy, Technical University of Denmark, 2800 Kgs. Lyngby, Denmark

²Department of Physics, Technical University of Denmark, 2800 Kgs. Lyngby, Denmark

³Department of Chemical and Biochemical Engineering, Technical University of Denmark, 2800 Kgs. Lyngby, Denmark

*E-mail: moniarn@dtu.dk

Keywords: catalysis, pressure effects in closed cell, *in situ* characterization, dynamics, ETEM.

In situ TEM were used to investigate dynamic processes of supported metal catalysts, such as Rh-based catalysts for the synthesis of higher alcohols, where the pressure was varied between a few millibars and atmospheric pressure.

Supported Rh-based catalysts have been widely studied for the synthesis of ethanol and other C₂₊ oxygenates from syngas and show promising activity and selectivity. It is therefore considered as one of the better materials for converting syngas directly into ethanol [1].

Under these *in situ* investigations of Rh-based catalysts, we aim to look into, among other things, strong metal-support interactions (SMSI), see Fig. 1, and to demonstrate the changes that occur at different pressures, which is an important result of the influence of pressure in terms of obtaining the structure-activity correlation for nanoparticles in reaction conditions.

First, we look at the SMSI effect at low pressure (a few millibars), see Fig. 1, using a Cs-corrected FEI Titan 80-300 environmental TEM and a DENSolutions Wildfire S3 MEMS based heating holder. In order to further understand what happens at higher pressure, a DENSolutions Climate system was used, where the catalyst can be exposed to the same gas composition at pressures up to 1 bar.

Furthermore, since the high induced electron energies and current densities typically used in HRTEM measurements often causes beam induced dynamic processes, we want to address some of the effects that occur at higher pressures.

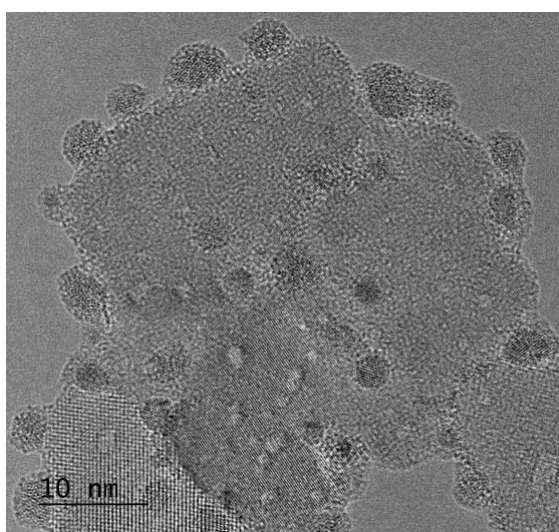


Figure 1: Rh particles on a TiO₂ support in 3 mbar H₂ illustrating the SMSI effect.

[1] V. Subramani and S.K. Gangwal, *Energy & Fuels* **22**, 814–839 (2008).