



A fully non-linear optimization approach to acousto-electric tomography

Adesokan, Bolaji James; Knudsen, K; Krishnan, V P; Roy, S

Published in:
Inverse Problems

Link to article, DOI:
[10.1088/1361-6420/aad6b1](https://doi.org/10.1088/1361-6420/aad6b1)

Publication date:
2018

Document Version
Early version, also known as pre-print

[Link back to DTU Orbit](#)

Citation (APA):

Adesokan, B. J., Knudsen, K., Krishnan, V. P., & Roy, S. (2018). A fully non-linear optimization approach to acousto-electric tomography. *Inverse Problems*, 34(10), [104004]. <https://doi.org/10.1088/1361-6420/aad6b1>

General rights

Copyright and moral rights for the publications made accessible in the public portal are retained by the authors and/or other copyright owners and it is a condition of accessing publications that users recognise and abide by the legal requirements associated with these rights.

- Users may download and print one copy of any publication from the public portal for the purpose of private study or research.
- You may not further distribute the material or use it for any profit-making activity or commercial gain
- You may freely distribute the URL identifying the publication in the public portal

If you believe that this document breaches copyright please contact us providing details, and we will remove access to the work immediately and investigate your claim.

A fully non-linear optimization approach to acousto-electric tomography

B. J. Adesokan*, K. Knudsen*, V. P. Krishnan† and S. Roy†

Abstract

This paper considers the non-linear inverse problem of reconstructing an electric conductivity distribution from the interior power density in a bounded domain. Applications include the novel tomographic method known as acousto-electric tomography, in which the measurement setup in Electrical Impedance Tomography is modulated by ultrasonic waves thus giving rise to a method potentially having both high contrast and high resolution. We formulate the inverse problem as a regularized non-linear optimization problem, show the existence of a minimizer, and derive optimality conditions. We propose a non-linear conjugate gradient scheme for finding a minimizer based on the optimality conditions. All our numerical experiments are done in two-dimensions. The experiments reveal new insight into the non-linear effects in the reconstruction. One of the interesting features we observe is that, depending on the choice of regularization, there is a trade-off between high resolution and high contrast in the reconstructed images. Our proposed non-linear optimization framework can be generalized to other hybrid imaging modalities.

1 Introduction

Hybrid tomography refers to a combination of two or more existing imaging modalities. Several modalities such as X-ray Computed Tomography (CT), Ultrasound Imaging (UI), Magnetic Resonance Imaging (MRI) offer high resolution but have poor contrast in some situations. Other imaging modalities such as Electrical Impedance Tomography (EIT) and Optical Tomography (OT) have the reverse properties, that is, they offer high contrast in various applications, but suffer from poor resolution. By combining two modalities with different nature, one can hope to achieve a tomographic modality with both high-contrast with high-resolution. A partial list of modalities for hybrid tomography includes Impedance-acoustic Tomography (IAT) [14] (coupling of EIT and UI), Acousto-electric tomography (AET) [4, 34] (coupling of EIT and UI), Photoacoustic tomography (PAT) [22] (coupling of OT and UI), and Magnetic resonance EIT (MREIT) [31, 19, 20] (coupling of MRI and EIT). For an overview of the several hybrid imaging modalities for conductivity imaging we refer the reader to [33].

In this paper we focus on a computational approach to the hybrid imaging problem relevant to AET. Mathematically the problem is as follows: Let $\Omega \subset \mathbb{R}^n$ be an open, bounded, convex set with smooth boundary. The interior conductivity distribution is given by a scalar function bounded above and below by positive constants. The application of a voltage potential f to the

boundary $\partial\Omega$ generates an interior voltage potential u that is characterized by the elliptic PDE

$$\begin{aligned} -\nabla \cdot (\sigma \nabla u) &= 0 \text{ in } \Omega, \\ u|_{\partial\Omega} &= f. \end{aligned} \tag{1}$$

In EIT one measures the normal current flux through the boundary given by $\sigma \nabla u \cdot \nu$, with ν denoting the outward unit normal on $\partial\Omega$. Ultrasound waves generated in the exterior of Ω can be used to perturb the interior conductivity due to the acousto-electric effect, and by measuring the resulting perturbed boundary current flux one can, in principle, compute the interior power density [4, 7]

$$H(\sigma) = \sigma |\nabla u|^2 \text{ in } \Omega.$$

The inverse problem in AET is to uniquely determine and reconstruct the conductivity σ from several power densities

$$H_i(\sigma) = \sigma |\nabla u_{f_i}|^2, \text{ for } 1 \leq i \leq m, \tag{2}$$

where u_{f_i} is the unique solution to (1) with boundary potential f_i . As one can easily see, the problem is a non-linear inverse problem.

For the two dimensional ($n = 2$) problem uniqueness is known [13] for any three ($m = 3$) boundary conditions f_1, f_2 and $f_3 = f_1 + f_2$ provided that the interior gradient fields satisfy

$$\det [\nabla u_1, \nabla u_2] \geq C > 0. \tag{3}$$

This conditions state that u_1, u_2 has no critical points and that ∇u_1 and ∇u_2 are nowhere collinear. This condition is satisfied for instance for $f_1 = x_1, f_2 = x_2$ written in Cartesian coordinates $x = (x_1, x_2)$, but in fact any two boundary conditions f_1, f_2 that are almost two-to-one can be taken together with f_3 [3]. In dimensions $n \geq 3$ the same question is a much more delicate issue [2, 12].

The non-linear inverse problem has been analyzed mainly from a theoretical point of view, see [6, 13, 9, 26] for a partial list of works in this direction. One approach for studying the non-linear problem is to consider the linearized problem. This has been analyzed both theoretically and numerically, see for example, [23, 24, 8, 27, 11, 16, 21, 17, 25]. It can be shown that the linearized problem in \mathbb{R}^2 is (microlocally) solvable in case of only two boundary conditions [8]. However, if the interior gradient fields $\nabla u_1, \nabla u_2$ are somewhere orthogonal in the interior, then local instabilities occur and the inversion allows propagation of singularities [10]. Consequently, the particular choice of boundary conditions turns out to be crucial.

In our work, we consider a fully non-linear approach to the optimization problem. While there are several works, most notably [4, 13], that have considered non-linear approaches to the reconstruction problem, to the best of our knowledge, ours is the first work that explicitly considers a regularized bilinear least squares optimization framework in the context of AET. The main novelty of the paper is that we provide a non-linear computational framework that has the potential for reconstructing conductivities with better contrast as well as resolution. In this context, a computational approach using edge-enhancing techniques for AET been done recently in [30, 1].

We will, as in [11], assume that $\sigma \in H^s(\Omega)$ with $s > \frac{n}{2}$ an integer. Then $H^s(\Omega)$ is a Banach algebra and $\sigma \in C(\overline{\Omega})$. This is a rather strong regularity assumption that allows our theoretical analysis below, but most likely the results can be extended to less regular conductivities. We take two boundary conditions $m = 2$ such that (3) is satisfied. For the two dimensional problem we

conjecture that for such two well-chosen boundary conditions the non-linear problem is uniquely solvable, however, we will not attempt to prove this. Instead we take a computational approach to the fully non-linear problem. We cast the inverse problem as a bilinear optimization problem, show existence of a minimizer and develop a non-linear conjugate gradient (NLCG) optimization approach for the reconstruction.

The outline of the paper is as follows: In Section 2 we formulate the optimization problem, show existence of solutions and derive optimality conditions. In Section 3 we discretize the optimality system and outline the NLCG approach. In Section 4, we describe the numerical implementation and carry out several computational experiments. We conclude in Section 5.

2 The optimization problem and its minimizer

We consider an optimization-based approach for reconstructing σ given $H_1(\sigma), H_2(\sigma)$. For $\sigma \in H^s(\Omega)$, the power density function $H(\sigma)$ also belongs to $H^s(\Omega)$ [11], and thus it makes sense to consider the following cost functional:

$$J(\sigma, u_1, u_2) = \frac{1}{2} \|\sigma |\nabla u_1|^2 - H_1^\delta\|_{L^2(\Omega)}^2 + \frac{1}{2} \|\sigma |\nabla u_2|^2 - H_2^\delta\|_{L^2(\Omega)}^2 + \frac{\alpha}{2} \|\sigma - \sigma_b\|_{H^s(\Omega)}^2. \quad (4)$$

In the above equation, u_1 and u_2 satisfy (1) with boundary data f_1 and f_2 , respectively, and $\sigma_b \in H^s(\Omega)$ is a chosen background conductivity. The quantities $H_1^\delta, H_2^\delta \in L^2(\Omega)$ denote the power density functionals possibly corrupted with noise. We will reconstruct σ in the following admissible set

$$H_{\text{ad}}^s(\Omega) := \{\sigma \in H^s(\Omega) \text{ such that } 0 < \sigma_l \leq \sigma(x) \leq \sigma_u \text{ for all } x \in \Omega\},$$

(here σ_l and σ_u are given positive constants) by considering the minimization problem:

$$\begin{aligned} & \min_{\sigma} J(\sigma, u_1, u_2), \\ & \text{such that } \mathcal{L}_{f_i}(u_i, \sigma) = 0, \quad i = 1, 2. \end{aligned} \quad (\text{P})$$

In the rest of the paper, we consider $s = \lfloor \frac{n}{2} \rfloor + 1$, where $\lfloor \cdot \rfloor$ denotes the greatest integer function. The equality $\mathcal{L}_f(u, \sigma) = 0$ is a short-hand notation for (1). In this section, we discuss the existence of solutions to the minimization problem (P) and state the optimality system for the characterization of a minimizer.

2.1 Existence of a minimizer

Our analysis of the minimization problem (P) begins with the discussion of the existence of solution of (1) which is proved in [32].

Proposition 2.1. *Let $\sigma \in H_{\text{ad}}^s$ and $f \in H^{s+1/2}(\partial\Omega)$. Then (1) has a unique solution $u \in H^{s+1}(\Omega)$.*

We will denote this unique solution by $u(\sigma)$. Next we consider the Fréchet differentiability of the mapping $u(\sigma)$ which is proved in [11].

Lemma 2.2. *The map $u(\sigma)$ defined by (1) is Fréchet differentiable as a mapping from $H^s(\Omega)$ to $H^{s+1}(\Omega)$.*

Using Lemma 2.2, we introduce the reduced cost functional

$$\widehat{J}(\sigma) = J(\sigma, u_1(\sigma), u_2(\sigma)), \quad (5)$$

where $u_i(\sigma)$, $i = 1, 2$ denotes the unique solution of (1) given σ and f_i , $i = 1, 2$.

We next state some properties of the reduced functional \widehat{J} which can be proved using the arguments in [11].

Proposition 2.3. *The reduced functional \widehat{J} , given in (5), is weakly lower semi-continuous (w.l.s.c.), non-negative and Fréchet differentiable as a function of σ .*

We are now ready to show the existence of a minimizer of the optimization problem (P) using the reduced functional \widehat{J} . In the statement of the theorem below, we denote $H_f^s(\Omega)$ as the closed convex subset of $H^s(\Omega)$ with boundary trace f .

Theorem 2.4. *Let $f_1, f_2 \in H^{s+1/2}(\partial\Omega)$. Then there exists a triplet $(\sigma^*, u_1^*, u_2^*) \in H_{\text{ad}}^s(\Omega) \times H_{f_1}^{s+1}(\Omega) \times H_{f_2}^{s+1}(\Omega)$ such that u_i^* , $i = 1, 2$ are solutions to $\mathcal{L}_{f_i}(u_i, \sigma) = 0$, $i = 1, 2$ and σ^* minimizes \widehat{J} in $H_{\text{ad}}^s(\Omega)$.*

Proof. We have that the boundedness from below of \widehat{J} guarantees the existence of a minimizing sequence $\{\sigma^{m_l}\} \in H_{\text{ad}}^s(\Omega)$ and since \widehat{J} is coercive, this sequence is bounded. Therefore it contains a weakly convergent subsequence $\{\sigma^{m_l}\}$ in $H_{\text{ad}}^s(\Omega)$ such that $\sigma^{m_l} \rightharpoonup \sigma^*$ (say). Since $H_{\text{ad}}^s(\Omega)$ is weakly closed, we have that $\sigma^* \in H_{\text{ad}}^s(\Omega)$. Since $\{\sigma^{m_l}\}$ is a minimizing sequence for \widehat{J} , we obtain the sequence $(u_1^{m_l}, u_2^{m_l})$, where $u_i^{m_l} = u_i(\sigma^{m_l})$, which is bounded in $H_{f_1}^{s+1}(\Omega) \times H_{f_2}^{s+1}(\Omega)$. This implies that the sequence converges weakly to (say) $(u_1^*, u_2^*) \in H_{f_1}^{s+1}(\Omega) \times H_{f_2}^{s+1}(\Omega)$.

We next show that the sequence (σ^*, u_1^*, u_2^*) is a weak solution of (1). First note that the triplet $(\sigma^{m_l}, u_1^{m_l}, u_2^{m_l})$ is a weak solution of (1) for all $m_l \in \mathbb{N}$, that is $\langle \sigma^{m_l} \nabla u_i^{m_l}, \nabla v \rangle_{L^2(\Omega)} = 0$ for any $v \in H_0^1(\Omega)$. Now, since $H^s(\Omega)$ is compactly embedded in $L^4(\Omega)$, we have that σ^{m_l} and $\nabla u_i^{m_l}$ converges strongly to σ^* and u_i^* respectively in $L^4(\Omega)$. Consequently $\sigma^{m_l} \nabla u_i^{m_l}$ converges strongly to $\sigma^* \nabla u_i^*$ in $L^2(\Omega)$. Hence $0 = \langle \sigma^{m_l} \nabla u_i^{m_l}, \nabla v \rangle_{L^2(\Omega)} \rightarrow \langle \sigma^* \nabla u_i^*, \nabla v \rangle_{L^2(\Omega)}$ all for $v \in H_0^1(\Omega)$ showing that (σ^*, u_1^*, u_2^*) is the unique solution of (1).

Now by w.l.s.c. of J , we have

$$\widehat{J}(\sigma^*) \leq \liminf_{m_l \rightarrow \infty} \widehat{J}(\sigma^{m_l}) = \inf_{\sigma \in H_{\text{ad}}^s(\Omega)} \widehat{J}(\sigma).$$

Thus, σ^* minimizes the reduced functional \widehat{J} and this proves the existence of a minimizer of the optimization problem (P). \square

2.2 The reduced functional and optimality conditions

In this section, we state the first order necessary optimality conditions for the minimizer of (4).

Correspondingly, a local minimum $\sigma^* \in H_{\text{ad}}^s(\Omega)$ of \widehat{J} is characterized by the first-order necessary optimality conditions given by

$$\left\langle \nabla \widehat{J}(\sigma^*), \tilde{\sigma} - \sigma^* \right\rangle_{L^2(\Omega)} \geq 0, \text{ for all } \tilde{\sigma} \in H_{\text{ad}}^s(\Omega),$$

where $\nabla \widehat{J}(\sigma^*)$ denotes the $L^2(\Omega)$ gradient and in the inner product above, we interpret $\nabla \widehat{J}(\sigma^*)$ as the Riesz representative of the Frechét derivative of \widehat{J} in L^2 evaluated at σ^* . It is well known (see for instance [29]) that using the Lagrange functional,

$$L(\sigma, u_1, u_2, v_1, v_2) = J(\sigma, u_1, u_2) + \langle \sigma \nabla u_1, \nabla v_1 \rangle_{L^2(\Omega)} + \langle \sigma \nabla u_2, \nabla v_2 \rangle_{L^2(\Omega)},$$

in the framework of the adjoint method, the condition $\langle \nabla \widehat{J}(\sigma^*), \tilde{\sigma} - \sigma^* \rangle_{L^2(\Omega)} \geq 0$, results in the following optimality system, consisting of the forward and adjoint equations and a variational inequality. We have

$$-\nabla \cdot (\sigma \nabla u_1) = 0 \text{ in } \Omega, \quad u_1|_{\partial\Omega} = f_1, \quad (6)$$

$$-\nabla \cdot (\sigma \nabla v_1) = 2\nabla \cdot (\sigma[\sigma|\nabla u_1|^2 - H_1^\delta]\nabla u_1) \text{ in } \Omega, \quad v_1|_{\partial\Omega} = 0, \quad (7)$$

$$-\nabla \cdot (\sigma \nabla u_2) = 0 \text{ in } \Omega, \quad u_2|_{\partial\Omega} = f_2, \quad (8)$$

$$-\nabla \cdot (\sigma \nabla v_2) = 2\nabla \cdot (\sigma[\sigma|\nabla u_2|^2 - H_2^\delta]\nabla u_2) \text{ in } \Omega, \quad v_2|_{\partial\Omega} = 0, \quad (9)$$

$$\left\langle (\sigma|\nabla u_1|^2 - H_1^\delta)|\nabla u_1|^2 + (\sigma|\nabla u_2|^2 - H_2^\delta)|\nabla u_2|^2 + \alpha \sum_{k=0}^s (-1)^k \Delta^k (\sigma - \sigma_b) + \nabla u_1 \cdot \nabla v_1 + \nabla u_2 \cdot \nabla v_2, \tilde{\sigma} - \sigma \right\rangle_{L^2(\Omega)} \geq 0, \quad (10)$$

for all $\tilde{\sigma} \in H_{\text{ad}}^s(\Omega)$.

3 Discretization of the optimality system

3.1 Numerical discretization of the forward and adjoint problems

In this section, we discuss the numerical approximation to the forward and adjoint elliptic equations in (6)–(9) using the finite element method. We describe the discretization schemes for solving (6)–(7). The same schemes would be used for (8)–(9). We first note that for a two-dimensional or three-dimensional setup $s = \lfloor \frac{n}{2} \rfloor + 1 = 2$, i.e. $\sigma \in H^2(\Omega)$. This implies that the regularization term in (4) is $\frac{\alpha}{2} \|\sigma - \sigma_b\|_{H^2(\Omega)}^2$. Consequently, the left hand side of (10) involves a fourth order PDE and is computationally very expensive to solve. Therefore, in the numerical simulations below, we use lower order regularization terms to determine the optimality system and use the NLCG method with the corresponding reduced gradient. More specifically, we use L^2 and H^1 regularization terms (corresponding to $s = 0$ and $s = 1$ respectively). The corresponding reduced gradients used in the NLCG method are the L^2 and the H^1 gradients. We emphasize that though the optimal solution σ^* obtained through this procedure is less regular, the method is computationally efficient. Furthermore, using the H^1 gradient, we have a good approximation of the desired $\sigma \in H^2(\Omega)$.

The weak form representation of (6) is as follows: Find $u \in H^1(\Omega)$ with boundary trace f such that

$$\int_{\Omega} \sigma \nabla u \cdot \nabla \tilde{u} = 0 \quad (11)$$

for all $\tilde{u} \in H_0^1(\Omega)$. Let us define the space of continuous functions which are piecewise polynomials of degree k in a triangle element K belonging to a mesh τ_h as follows

$$W_{f,h}^k(\Omega) = \{u_h \in C^0(\overline{\Omega}) : u_h|_K \in \mathbb{P}_k \text{ for all } K \in \tau_h\} \cap \{u_h = f \text{ on } \partial\Omega\}. \quad (12)$$

We also define the bilinear form

$$A(u, \tilde{u}) = \int_{\Omega} \sigma \nabla u \cdot \nabla \tilde{u}. \quad (13)$$

Then the discrete scheme for (6) is given as follows: Find $u_h \in W_{f,h}^k(\Omega)$, such that

$$A(u_h, \tilde{u}_h) = 0, \quad (14)$$

for all $\tilde{u}_h \in W_{0,h}^k(\Omega)$, where

$$W_{0,h}^k = \{u_h \in C^0(\bar{\Omega}) : u_h|_K \in \mathbb{P}_k \quad \forall K \in \tau_h\} \cap \{u_h = 0 \text{ on } \partial\Omega\}. \quad (15)$$

For the adjoint equation (7), we define the linear form

$$L(\tilde{v}) = -2 \int_{\Omega} (\sigma[\sigma|\nabla u_h|^2 - H_1^\delta] \nabla u_h) \cdot \nabla \tilde{v}, \quad (16)$$

where ∇u_h is the derivative of the solution u_h to (14). Then the discrete scheme for (7) is given as follows: Find $v_h \in W_{0,h}^k$, such that

$$A(v_h, \tilde{v}_h) = L(\tilde{v}_h), \quad (17)$$

for all $\tilde{v}_h \in W_{0,h}^k$ defined in (15), and $A(u, v)$ is the bilinear form defined in (13).

3.2 The reduced H^1 gradient

For the case $s = 1$, in the optimality system (10), the following reduced L^2 gradient components appear

$$\begin{aligned} \nabla \hat{J}(\sigma) = & \left[(\sigma|\nabla u_1|^2 - H_1^\delta) |\nabla u_1|^2 + (\sigma|\nabla u_2|^2 - H_2^\delta) |\nabla u_2|^2 + \right. \\ & \left. \alpha(\sigma - \sigma_b) - \alpha\Delta(\sigma - \sigma_b) + \nabla u_1 \cdot \nabla v_1 + \nabla u_2 \cdot \nabla v_2 \right], \end{aligned} \quad (18)$$

where Δ is the distributional Laplacian. Let us now discuss the unconstrained case. In this case, optimality requires $\nabla \hat{J}(\sigma) = 0$. Because of the H^1 cost for $\sigma - \sigma_b$, we have a setting that allows to include boundary conditions on the conductivity σ . By considering the derivation of the optimality system above using the Lagrange formulation, we find that a convenient choice is to require $\sigma - \sigma_b = 0$ on $\partial\Omega$ as the conductivity distribution near the boundary is constant and equals to the background distribution σ_b .

We wish to apply a gradient-based optimization scheme where the residual of (18) is used such that $\sigma \in H^1(\Omega)$. For this purpose, we cannot use this residual directly for updating the conductivity, since it is not in $H^1(\Omega)$. Therefore, it is necessary to determine the reduced H^1 gradient. This is done based on the following fact

$$\left\langle \nabla \hat{J}(\sigma)_{H^1(\Omega)}, \varphi \right\rangle_{H^1(\Omega)} = \left\langle \nabla \hat{J}(\sigma), \varphi \right\rangle_{L^2(\Omega)},$$

where $\varphi \in H_0^1(\Omega)$. Using the definition of the H^1 inner product and integrating by parts, we have that the H^1 gradient is obtained by solving the following boundary value problem

$$-\Delta(\nabla \hat{J}(\sigma)_{H^1(\Omega)}) + \nabla \hat{J}(\sigma)_{H^1(\Omega)} = \nabla \hat{J}(\sigma) \text{ in } \Omega \quad (19)$$

$$\nabla \hat{J}(\sigma)_{H^1(\Omega)} = 0 \text{ on } \partial\Omega. \quad (20)$$

where (19)-(20) is defined in the weak sense. The solution to this problem provides the appropriate gradient to be used in a gradient update of the conductivity that includes projection to ensure $\sigma \in H_{\text{ad}}^1(\Omega)$.

3.3 A projected NLCG optimization scheme

We solve the optimization problem (P) by implementation of a projected non-linear conjugate scheme (NLCG); see [29] in L^2 and H^1 spaces. Such a scheme is an extension of the conjugate gradient method to constrained non-linear optimization problems. In the following discussing we denote X_h as both the discrete approximations to the $L^2(\Omega)$ and $H^1(\Omega)$ spaces. We also denote the corresponding discrete inner product and norm as $\langle \cdot, \cdot \rangle_{X_h}$ and $\| \cdot \|_{X_h}$, respectively, where $\| \cdot \|_{X_h}^2 = \langle \cdot, \cdot \rangle_{X_h}$. For the definition of the discrete L_h^2, H_h^1 inner product we refer to [18]. To describe this iterative method, we start with an initial guess σ_0 for the conductivity and the corresponding search direction:

$$d_0 = -g_0 := -(\nabla \widehat{J}(\sigma_0))_{X_h},$$

where $\nabla \widehat{J}(\sigma_0)_{X_h}$ represents the discrete L^2 or H^1 gradient computed through a finite element discretization of (10) or (19)–(20), respectively. The search directions are obtained recursively as

$$d_{k+1} = -g_{k+1} + \beta_k d_k, \quad (21)$$

where $g_k = \nabla \widehat{J}(\sigma_k)_{X_h}$, $k = 0, 1, \dots$ and the parameter β_k is chosen according to the formula of Hager-Zhang [15] given by

$$\beta_k^{HG} = \frac{1}{d_k^T y_k} \left(y_k - 2d_k \frac{\|y_k\|_{X_h}^2}{d_k^T y_k} \right)^T g_{k+1}, \quad (22)$$

where $y_k = g_{k+1} - g_k$.

We update the value of the conductivity σ with a steepest descent scheme given as follows

$$\sigma_{k+1} = \sigma_k + \alpha_k d_k, \quad (23)$$

where k is a index of the iteration step and $\alpha_k > 0$ is a step length obtained using a line search algorithm as in [5]. For this line search, we use the following Armijo condition of sufficient decrease of \widehat{J}

$$\widehat{J}(\sigma_k + \alpha_k d_k) \leq \widehat{J}(\sigma_k) + \delta \alpha_k \langle \nabla \widehat{J}(\sigma_k), d_k \rangle_{X_h}, \quad (24)$$

where $0 < \delta < 1/2$.

Notice that this gradient procedure should be combined with a projection step onto H_{ad}^s . Therefore, we consider the following

$$\sigma_{k+1} = P_L [\sigma_k + \alpha_k d_k], \quad (25)$$

where

$$P_L [\sigma] = \max\{\sigma_l, \min\{\sigma_u, \sigma\}\}.$$

The projected NLCG scheme can be summarized as follows:

1. Input: initial approximation, σ_0 . Evaluate $d_0 = -\nabla \widehat{J}(\sigma_0)_{X_h}$, index $k = 0$, maximum $k = k_{\max}$, tolerance =tol.
2. While ($k < k_{\max}$) do
 - (a) Set $\sigma_{k+1} = P_L[\sigma_k + \alpha_k d_k]$, where α_k is obtained using a line-search algorithm.
 - (b) Compute $g_{k+1} = \nabla \widehat{J}(\sigma_{k+1})_{X_h}$.
 - (c) Compute β_k^{HG} using (22).
 - (d) Set $d_{k+1} = -g_{k+1} + \beta_k^{HG} d_k$.
 - (e) If $\|\sigma_{k+1} - \sigma_k\|_{X_h} < \text{tol.}$, terminate.
 - (f) Set $k = k + 1$.
3. End while.

4 Numerical experiments

In this section we discuss the numerical implementation of the NLCG scheme for the minimization problem (P). The domain of definition is the unit circle centered at $(0,0)$. We choose the value of the background conductivity as $\sigma_b = 1.0$ and the lower and upper values $\sigma_l = 0.01$, $\sigma_u = 4.0$. The initial guess for σ in the NLCG algorithm is chosen to be 1. The computations are done in FENICS with \mathbb{P}_2 elements for the electric potential u and \mathbb{P}_1 for the conductivity function σ in case $s = 0$. In the case $s = 1$, we note that the optimality condition (10) contains a Laplacian of σ and thus we use \mathbb{P}_2 elements for σ . The average mesh size for the optimization algorithm is 0.01. The plot of the mesh is shown in Figure 1. We choose the regularization parameter $\alpha = 0.1$ for all the numerical experiments.

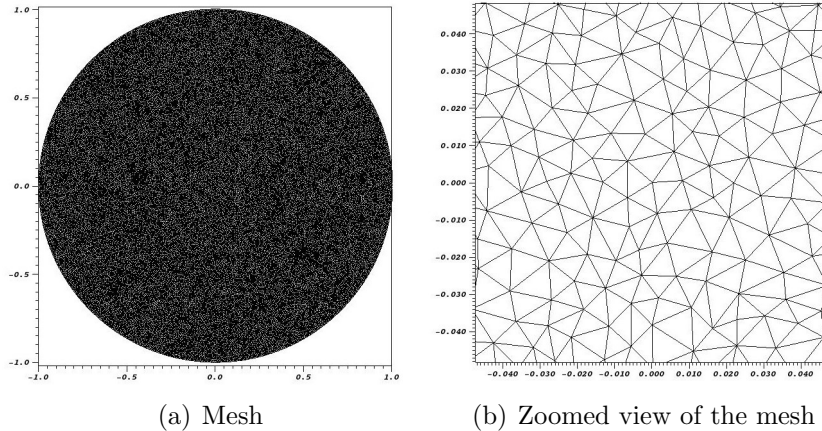


Figure 1: The mesh for the experiments

In our numerical simulations, we consider the following sets of boundary conditions:

$$\begin{aligned}
\text{BC1: } f_1 &= x, f_2 = \frac{x+y}{\sqrt{2}}, \\
\text{BC2: } f_1 &= x, f_2 = y, \\
\text{BC3: } f_1 &= x, f_2 = y, f_3 = \frac{x+y}{\sqrt{2}}.
\end{aligned} \tag{BC}$$

With either of these choice of boundary conditions, u_1 and u_2 have no critical points and $\nabla u_1, \nabla u_2$ are non-parallel in $\bar{\Omega}$ [3]. This choice of boundary conditions is motivated by the linear reconstruction algorithms, where BC1 and BC2 lead to different qualitative behavior in the reconstructions [10].

Unless otherwise explicitly stated, the boundary condition in the numerical experiments is BC1; see (BC). To generate the data H in (2), we choose a σ and solve (6) on a finer mesh with mesh size $h = 0.005$. We then compute the gradients of u using a finite element discretization and thus compute the internal data H . Finally, we project the data onto the computational mesh for our NLCG algorithm.

In general, we expect a better resolution of the reconstructions with L^2 regularization than with H^1 regularization. Recall that at each iterative step, the update for σ is found by solving (10). In the case of H^1 regularization, since (10) involves an additional Laplacian term, the obtained update for σ is more regular compared to that with the L^2 regularization set up. Due to this, the artifacts with H^1 regularization are less pronounced leading to reconstructions with better contrast. For the same reason, the edges are enhanced using L^2 regularization resulting in images with better resolution. Also note that more artifacts are present in images with L^2 regularization compared to that with H^1 regularization.

Test Case I: In the first test case, we consider a phantom represented by a disk and the conductivity σ is defined as follows:

Let $r = \sqrt{(x - 0.2)^2 + (y - 0.2)^2}$. Define

$$\sigma(x) = \begin{cases} 2.0, & r < 0.3, \\ 1.0, & r \geq 0.3. \end{cases} \tag{26}$$

The plots of the actual and reconstructed σ with the boundary condition BC1 given in (BC) and with various values of L^2 and H^1 regularization parameter α are shown in Figure 2. We observe that as α increases, the contrast in both the cases decreases. Regardless of the value of the regularization parameter α , we observe better resolution with L^2 regularization and better contrast with H^1 regularization. We also compare our algorithm with the paramterix method of [21] (shown in Figure 2(b)), and while there is a slightly better resolution of the edges compared to our algorithm, there is a substantial loss of contrast in the paramterix method.

Test Case II: In the second test case, we consider the heart and lung phantom for σ as described in [28]. It has a background value of 1.0 that is perturbed in two ellipses (representing the lungs) where the value is 0.5 and in a circular region (representing the heart) where the value is 2.0.

In order to demonstrate the robustness of our optimization framework, we add 10% and 25% white Gaussian noise in the exact interior data H . The noise is added to H in the following way: Let δ denote the noise level. Then

$$H^\delta = H + \delta \cdot H \cdot N, \tag{27}$$

where H^δ is the 2D-matrix of noisy data, H is the 2D-matrix of data without noise and N is the 2D-matrix of values each obtained from a standard normal distribution. In (27), the product refers to entrywise multiplication.

The reconstructions of σ with L^2 and H^1 regularizations are shown in Figures 3 and 3(c), respectively. The simulations show that our algorithm is very robust in the presence of noisy data. Furthermore, better contrast is obtained with the H^1 regularization term in comparison to the L^2 case.

Test Case III: In the third test case, we consider a phantom where the conductivity σ is supported inside a rotated rectangle

$$\sigma(x) = \begin{cases} 2.0, & \text{if } \left| \frac{x}{\sqrt{2}} + \frac{y}{\sqrt{2}} - 0.2 \right| < 0.2 \text{ and } \left| \frac{x}{\sqrt{2}} - \frac{y}{\sqrt{2}} - 0.2 \right| < 0.4, \\ 1.0, & \text{elsewhere.} \end{cases} \quad (28)$$

The reconstructions of σ with L^2 and H^1 regularizations and with BC1, BC2 and BC3 given in (BC) are shown in Figure 4.

Our goal with this simulation is to show the effect of boundary conditions on the reconstructed images. As we can see, the reconstructions with boundary conditions BC1 and BC3 are better compared to the ones with BC2, in the sense that there are fewer artifacts with BC1 and BC3. We note that a similar behavior was previously observed and studied theoretically and numerically for the linearized reconstruction method [16, 10] using microlocal analysis. The characterization of artefacts appearing in reconstructions from the fully non-linear algorithm is, in our opinion, non-trivial, and beyond the scope of the current work. Note further that BC1 with only two boundary conditions yields reconstructions similar in quality to the reconstructions from BC3 with three boundary conditions. This makes us conjecture that the non-linear reconstruction problem in AET is solvable with only two properly chosen boundary conditions.

Test Case IV: In the fourth test case, we consider a combination of phantoms supported in a square $S_a = \{(x, y) \in \mathbb{R}^2 : -0.1 < x < 0.1, -0.1 < y < 0.1\}$ with $\sigma = 3.0$, 2 disks centered at $(-0.1, 0.5)$ with radius 0.2 and $\sigma = 2.0$ and at $(0.1, 0.5)$ with radius 0.2 and $\sigma = 1.0$ and a bean-shaped annulus with value of $\sigma = 2.0$ in the annular region and $\sigma = 0.5$ in the hole. The plots of the reconstructed σ for $s = 0$, $\alpha = 0.1$ and $s = 1$, $\alpha = 0.1$ with BC1 as given in (BC) and with the parametrix method are shown in Figure 5.

Our numerical procedure performs well for a phantom with an inclusion as well as with a self-intersection as shown in Figure 5. Note that the inclusion is clearly visible. Furthermore for the two disks with intersections, the intersecting region is clearly distinguishable as well. We compare with the parametrix method of [21] (see Figure 5(b)), and similar to what was observed in the case of Figure 2, there is a substantial loss of contrast with the parametrix method.

5 Conclusion

In this work, we considered a non-linear computational approach to acousto-electric tomography involving the reconstruction of the electric conductivity of a medium from interior power density

distribution. We formulated the inverse problem as a non-linear optimization problem, showed the existence of a minimizer and developed a non-linear conjugate gradient (NLCG) scheme for the reconstruction of the conductivity of the medium from interior power density functionals. We presented several numerical simulations showing the robustness of the NLCG algorithm. We observed that the H^1 regularization, in general, reconstructed images with better contrast compared to the L^2 regularization which reconstructed images with better resolution. The proposed non-linear framework is versatile and can be applied to other hybrid imaging modalities as well.

Acknowledgements

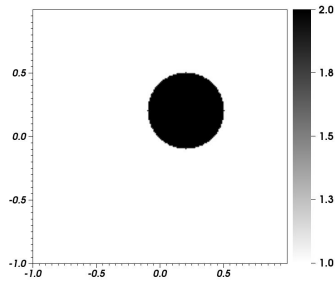
Knudsen would like to acknowledge support from the Danish Council for Independent Research — Natural Sciences. Krishnan was supported in part by US NSF grant DMS 1616564. Additionally, he and Roy benefited from the support of Airbus Corporate Foundation Chair grant titled “Mathematics of Complex Systems” established at TIFR CAM and TIFR ICTS, Bangalore, India.

References

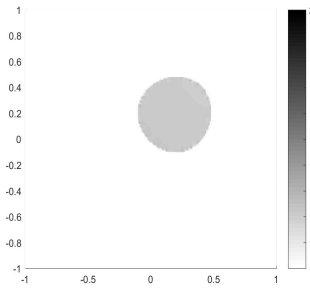
- [1] Bolaji Adesokan, Bangti Jin, Bjørn Christian Skov Jensen, and Kim Knudsen. Acousto-electric tomography with total variation regularization. *Submitted*, 2018.
- [2] Giovanni S. Alberti, Guillaume Bal, and Michele Di Cristo. Critical points for elliptic equations with prescribed boundary conditions. *Arch. Ration. Mech. Anal.*, 226(1):117–141, 2017.
- [3] Giovanni Alessandrini and Vincenzo Nesi. Univalent σ -harmonic mappings. *Arch. Ration. Mech. Anal.*, 158(2):155–171, 2001.
- [4] Habib Ammari, Eric Bonnetier, Yves Capdeboscq, M. Tanter, and Mathias Fink. Electrical impedance tomography by elastic deformation. *SIAM J. Appl. Math.*, 68(6):1557–1573, 2008.
- [5] Mario Annunziato and Alfio Borzì. A Fokker–Planck control framework for multidimensional stochastic processes. *Journal of Computational and Applied Mathematics*, 237(1):487 – 507, 2013.
- [6] Guillaume Bal. Cauchy problem for ultrasound-modulated eit. *Anal. PDE*, 6(4):751–775, 2013.
- [7] Guillaume Bal. Hybrid inverse problems and internal functionals. In *Inverse problems and applications: inside out. II*, volume 60 of *Math. Sci. Res. Inst. Publ.*, pages 325–368. Cambridge Univ. Press, Cambridge, 2013.
- [8] Guillaume Bal. Hybrid inverse problems and redundant systems of partial differential equations. In *Inverse problems and applications*, volume 615 of *Contemp. Math.*, pages 15–47. Amer. Math. Soc., Providence, RI, 2014.
- [9] Guillaume Bal, Eric Bonnetier, François Monard, and Faouzi Triki. Inverse diffusion from knowledge of power densities. *Inverse Probl. Imaging*, 7(2):353–375, 2013.

- [10] Guillaume Bal, Kristoffer Hoffmann, and Kim Knudsen. Propagation of singularities for linearised hybrid data impedance tomography. *Inverse Problems*, 34(2), 2017.
- [11] Guillaume Bal, Wolf Naetar, Otmar Scherzer, and John Schotland. The Levenberg-Marquardt iteration for numerical inversion of the power density operator. *J. Inverse Ill-Posed Probl.*, 21(2):265–280, 2013.
- [12] Yves Capdeboscq. On a counter-example to quantitative Jacobian bounds. *J. Éc. polytech. Math.*, 2:171–178, 2015.
- [13] Yves Capdeboscq, Jérôme Fehrenbach, Frederic de Gournay, and Otared Kavian. Imaging by modification: numerical reconstruction of local conductivities from corresponding power density measurements. *SIAM J. Imaging Sci.*, 2(4):1003–1030, 2009.
- [14] Bastian Gebauer and Otmar Scherzer. Impedance-acoustic tomography. *SIAM J. Appl. Math.*, 69(2):565–576, 2008.
- [15] William W. Hager and Hongchao Zhang. A new conjugate gradient method with guaranteed descent and an efficient line search. *SIAM Journal on Optimization*, 16(1):170–192, 2005.
- [16] Kristoffer Hoffmann and Kim Knudsen. Iterative reconstruction methods for hybrid inverse problems in impedance tomography. *Sens. Imaging*, 15, 2014.
- [17] Simon Hubmer, Kim Knudsen, Changyou Li, and Ekaterina Sherina. Limited angle electrical impedance tomography with power density data. *arXiv:1712.08009*, 2018. to appear in *Inverse Problems in Science and Engineering*.
- [18] Boško S. Jovanović and Endre Süli. *Analysis of Finite Difference Schemes*. Springer Series in Computational Mathematics, 1 edition, 2014.
- [19] S. Kim, O. Kwon, J. K. Seo, and J.-R. Yoon. On a nonlinear partial differential equation arising in magnetic resonance electrical impedance tomography. *SIAM J. Math. Anal.*, 34(3):511–526 (electronic), 2002.
- [20] Y. J. Kim, O. Kwon, J. K. Seo, and E. J. Woo. Uniqueness and convergence of conductivity image reconstruction in magnetic resonance electrical impedance tomography. *Inverse Problems*, 19(5):1213–1225, 2003.
- [21] Peter Kuchment and Leonid Kunyansky. 2D and 3D reconstructions in acousto-electric tomography. *Inverse Problems*, 27(5):055013, 21, 2011.
- [22] Peter Kuchment and Leonid Kunyansky. Mathematics of photoacoustic and thermoacoustic tomography. *Handbook of Mathematical Methods in Imaging: Volume 1, Second Edition*, pages 1117–1167, 2015.
- [23] Peter Kuchment and Dustin Steinhauer. Stabilizing inverse problems by internal data. *Inverse Problems*, 28(8):084007, 20, 2012.

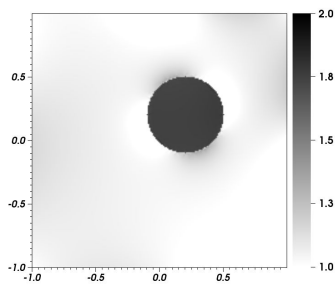
- [24] Peter Kuchment and Dustin Steinhauer. Stabilizing inverse problems by internal data. II: non-local internal data and generic linearized uniqueness. *Anal. Math. Phys.*, 5(4):391–425, 2015.
- [25] Changyou Li, Mirza Karamehmedović Ekaterina Sherina, and Kim Knudsen. Levenberg-Marquardt algorithm for acousto-electric tomography based on the complete electrode model. *In preparation*, 2018.
- [26] François Monard and Guillaume Bal. Inverse diffusion problems with redundant internal information. *Inverse Probl. Imaging*, 6(2):289–313, 2012.
- [27] Carlos Montalto and Plamen Stefanov. Stability of coupled-physics inverse problems with one internal measurement. *Inverse Problems*, 29(12):125004, 13, 2013.
- [28] J. Mueller and S. Siltanen. *Linear and Nonlinear Inverse Problems with Practical Applications*. Society for Industrial and Applied Mathematics, Philadelphia, PA, 2012.
- [29] P. Neittaanmaki and D. Tiba. *Optimal Control of Nonlinear Parabolic Systems: Theory: Algorithms and Applications*. Chapman & Hall/CRC Pure and Applied Mathematics. Taylor & Francis, 1994.
- [30] Souvik Roy and Alfio Borzi. A new optimization approach to sparse reconstruction of log-conductivity in acousto-electric tomography. *SIAM J. Imaging Sci.*, 11(2):1759–1784, 2018.
- [31] G. C. Scott, M. L. G. Joy, R. L. Armstrong, and R. M. Henkelman. Measurement of nonuniform current density by magnetic resonance. *IEEE Transactions on Medical Imaging*, 10(3):362 – 374, 1991.
- [32] V. A. Solonnikov. Overdetermined elliptic boundary-value problems. *Journal of Soviet Mathematics*, 1(4):477–512, 1973.
- [33] Thomas Widlak and Otmar Scherzer. Hybrid tomography for conductivity imaging. *Inverse Problems*, 28(8):084008, 28, 2012.
- [34] H. Zhang and L. V. Wang. Acousto-electric tomography. *Proc. SPIE*, 5320:14514, 2004.



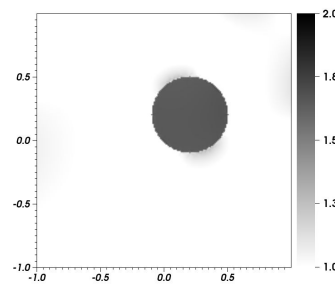
(a) Actual phantom



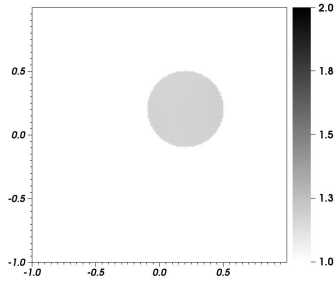
(b) Parametrix method [21]
(Done in Matlab)



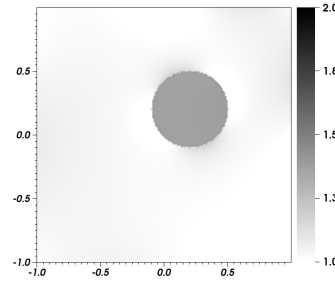
(c) $s = 0, \alpha = 0.1$



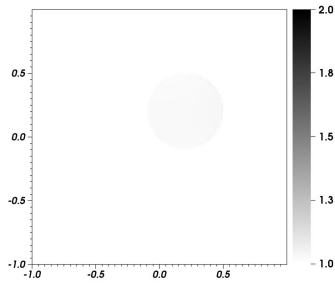
(d) $s = 1, \alpha = 0.1$



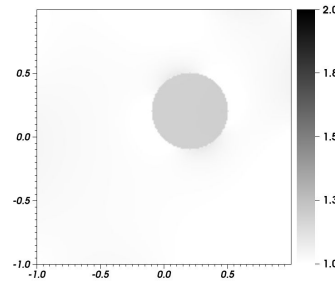
(e) $s = 0, \alpha = 0.4$



(f) $s = 1, \alpha = 0.4$

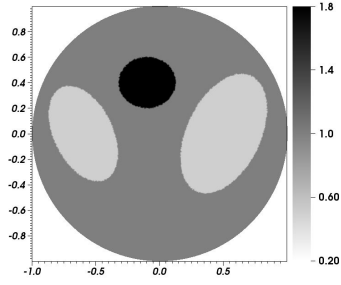


(g) $s = 0, \alpha = 0.7$

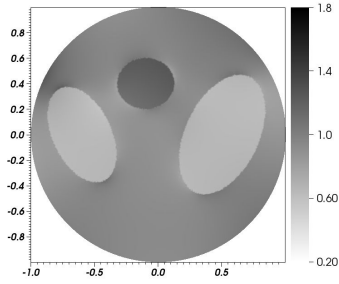


(h) $s = 1, \alpha = 0.7$

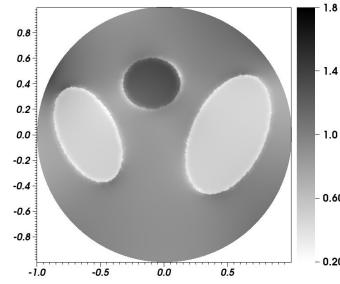
Figure 2: Test Case I: The actual and reconstructed Gaussian phantom for $\alpha = 0.1$ with boundary condition BC1 and with the parametrix method.



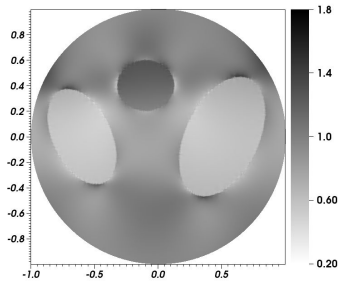
(a) Actual phantom



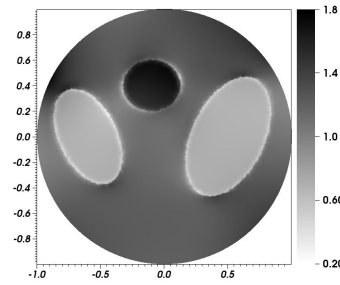
(b) $s = 0, \alpha = 0.1$



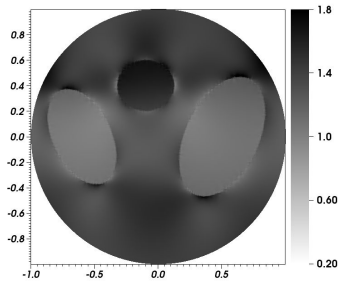
(c) $s = 1, \alpha = 0.1$



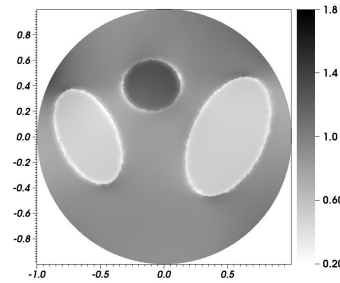
(d) $s = 0, \alpha = 0.1, 10\%$ noise



(e) $s = 1, \alpha = 0.1, 10\%$ noise

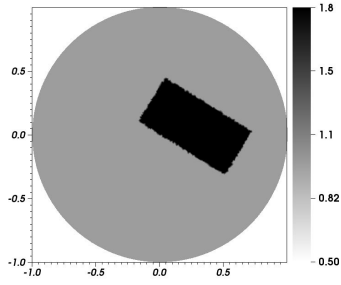


(f) $s = 0, \alpha = 0.1, 25\%$ noise

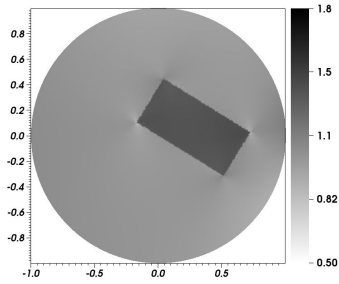


(g) $s = 1, \alpha = 0.1, 25\%$ noise

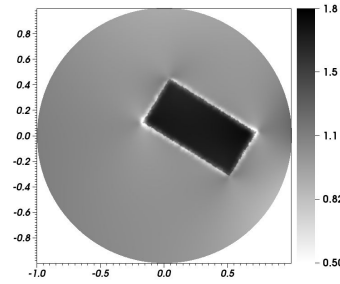
Figure 3: Test Case II: The actual and reconstructed heart and lung phantom with L^2 and H^1 regularizations and with noiseless/noisy data.



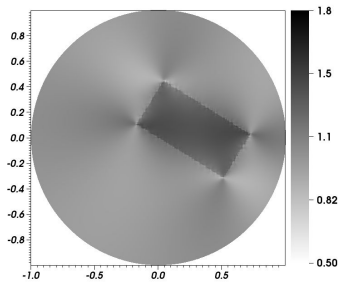
(a) Actual phantom



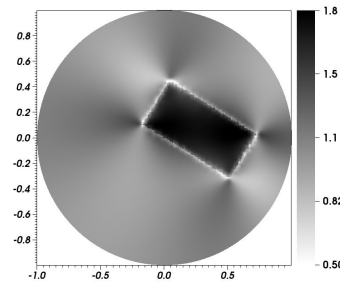
(b) $s = 0$, $\alpha = 0.1$ with BC1



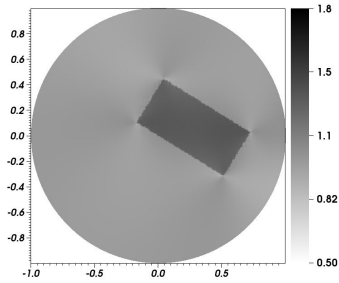
(c) $s = 1$, $\alpha = 0.1$ with BC1



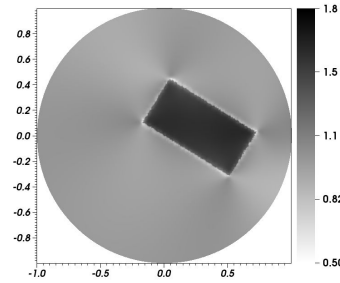
(d) $s = 0$, $\alpha = 0.1$ with BC2



(e) $s = 1$, $\alpha = 0.1$ with BC2

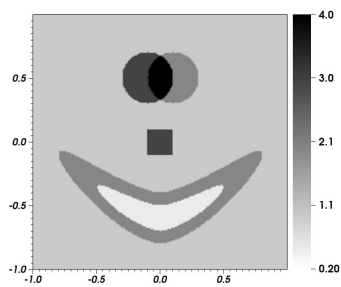


(f) $s = 0$, $\alpha = 0.1$ with BC3

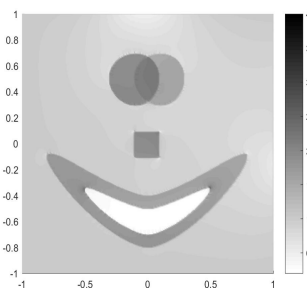


(g) $s = 1$, $\alpha = 0.1$ with BC3

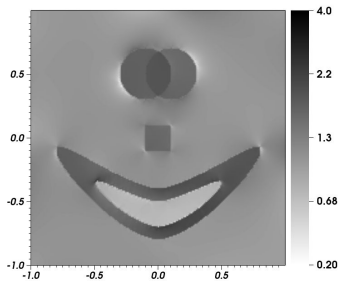
Figure 4: Test Case III: The actual and reconstructed rotated rectangle phantom with L^2 and H^1 regularization, and with the boundary conditions BC1, BC2 and BC3.



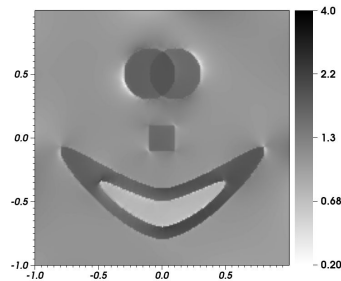
(a) Actual phantom



(b) Paramterix method [21]
(Done in Matlab)



(c) $s = 0, \alpha = 0.1$



(d) $s = 1, \alpha = 0.1$

Figure 5: Test Case IV: The actual and reconstructed images of a phantom with an inclusion as well as with self-intersections.