

Kent Academic Repository

Full text document (pdf)

Citation for published version

Nicolò, Andrea and Massaroni, Carlo and Passfield, Louis (2017) Respiratory Frequency during Exercise: The Neglected Physiological Measure. *Frontiers in Physiology*. ISSN 1664-042X.

DOI

<https://doi.org/10.3389/fphys.2017.00922>

Link to record in KAR

<http://kar.kent.ac.uk/65825/>

Document Version

Publisher pdf

Copyright & reuse

Content in the Kent Academic Repository is made available for research purposes. Unless otherwise stated all content is protected by copyright and in the absence of an open licence (eg Creative Commons), permissions for further reuse of content should be sought from the publisher, author or other copyright holder.

Versions of research

The version in the Kent Academic Repository may differ from the final published version.

Users are advised to check <http://kar.kent.ac.uk> for the status of the paper. **Users should always cite the published version of record.**

Enquiries

For any further enquiries regarding the licence status of this document, please contact:

researchsupport@kent.ac.uk

If you believe this document infringes copyright then please contact the KAR admin team with the take-down information provided at <http://kar.kent.ac.uk/contact.html>



Respiratory Frequency during Exercise: The Neglected Physiological Measure

Andrea Nicolò¹, Carlo Massaroni² and Louis Passfield^{3,4*}

¹ Department of Movement, Human and Health Sciences, University of Rome "Foro Italico", Rome, Italy, ² Unit of Measurements and Biomedical Instrumentation, Departmental Faculty of Engineering, Università Campus Bio-Medico di Roma, Rome, Italy, ³ Endurance Research Group, School of Sport and Exercise Sciences, University of Kent, Kent, United Kingdom, ⁴ Faculty of Kinesiology, University of Calgary, Calgary, Canada

OPEN ACCESS

Edited by:

Billy Sperlich,
Integrative & Experimentelle
Trainingswissenschaft, Universität
Würzburg, Germany

Reviewed by:

Xiangrong Shi,
University of North Texas Health
Science Center, United States
Monoem Haddad,
Qatar University, Qatar
Jordan A. Guenette,
University of British Columbia, Canada

*Correspondence:

Louis Passfield
l.passfield@kent.ac.uk

Specialty section:

This article was submitted to
Exercise Physiology,
a section of the journal
Frontiers in Physiology

Received: 14 July 2017

Accepted: 31 October 2017

Published: 11 December 2017

Citation:

Nicolò A, Massaroni C and Passfield L
(2017) Respiratory Frequency during
Exercise: The Neglected Physiological
Measure. *Front. Physiol.* 8:922.
doi: 10.3389/fphys.2017.00922

The use of wearable sensor technology for athlete training monitoring is growing exponentially, but some important measures and related wearable devices have received little attention so far. Respiratory frequency (f_R), for example, is emerging as a valuable measurement for training monitoring. Despite the availability of unobtrusive wearable devices measuring f_R with relatively good accuracy, f_R is not commonly monitored during training. Yet f_R is currently measured as a vital sign by multiparameter wearable devices in the military field, clinical settings, and occupational activities. When these devices have been used during exercise, f_R was used for limited applications like the estimation of the ventilatory threshold. However, more information can be gained from f_R . Unlike heart rate, $\dot{V}O_2$, and blood lactate, f_R is strongly associated with perceived exertion during a variety of exercise paradigms, and under several experimental interventions affecting performance like muscle fatigue, glycogen depletion, heat exposure and hypoxia. This suggests that f_R is a strong marker of physical effort. Furthermore, unlike other physiological variables, f_R responds rapidly to variations in workload during high-intensity interval training (HIIT), with potential important implications for many sporting activities. This Perspective article aims to (i) present scientific evidence supporting the relevance of f_R for training monitoring; (ii) critically revise possible methodologies to measure f_R and the accuracy of currently available respiratory wearables; (iii) provide preliminary indication on how to analyze f_R data. This viewpoint is expected to advance the field of training monitoring and stimulate directions for future development of sports wearables.

Keywords: breathing, effort, wearable sensors, training monitoring, athletes

INTRODUCTION

The large diffusion of wearable devices has stimulated interest in athlete training monitoring, with the aim of maximizing performance, and minimizing the risk of injury and illness (Düking et al., 2016). The development of sport-related technologies is occurring rapidly and is often guided by market forces rather than athlete or scientific needs. In this process, it is not uncommon that technological solutions and measures are available before the sport scientist or practitioner can appreciate their importance, and this can reduce the use of new technologies. Emblematic here, is the example of respiratory frequency (f_R), which may provide a better marker of physical effort compared to traditionally monitored physiological variables. However, despite the availability of unobtrusive wearable devices measuring f_R with relatively good accuracy, the practice of measuring f_R during training is not common yet.

CURRENT APPLICATIONS OF RESPIRATORY WEARABLES

For a long time, f_R has received little consideration also in the clinical field, despite being recognized as a vital sign capable of predicting serious adverse events. A series of papers entitled “Respiratory rate: the neglected vital sign” (Cheng et al., 2008; Cretikos et al., 2008; Gandevia and McKenzie, 2008; Steichen et al., 2008) and “Rate of respiration: the forgotten vital sign” (Parkes, 2011) contributed to redirect attention to f_R in the clinical field. These contributions also inspired the present manuscript, which aims to draw attention to the potential of f_R for monitoring training in sport. Due to its importance as a vital sign, f_R is currently measured by unobtrusive multi-parameter wearable devices mainly in the military field, clinical setting, and during occupational activities. When these devices have been used during exercise, f_R is typically used for limited applications such as the estimation of the ventilatory threshold during incremental exercise (Hailstone and Kilding, 2011). Whilst, the disproportionate and progressive increase in f_R , which begins with attainment of the first ventilatory threshold, may be used as a practical non-invasive method for estimating the ventilatory thresholds (Cross et al., 2012), there are other important reasons why athletes should consider monitoring f_R during training.

RESPIRATORY FREQUENCY AS A MARKER OF PHYSICAL EFFORT

f_R is often measured in exercise physiology as one of the two components (together with tidal volume) of minute ventilation. However, minute ventilation has typically received much more attention than its components, being the best single indicator of the ventilatory output. Nevertheless, recent evidence suggests that f_R and tidal volume are regulated by different inputs during exercise, and that their differential responses contain valuable information (Nicolò et al., 2017a,b). f_R plays an important role during exercise as a strong marker of physical effort, more so than other traditionally monitored physiological variables. The non-linear increase of f_R during incremental exercise parallels the well-known time course of blood lactate (La^-), resembling the change in physical effort and task difficulty experienced at exercise intensities above the first ventilatory threshold. In fact, f_R better reflects physical effort than La^- when an incremental test is performed after exercise-induced muscle damage (Davies et al., 2011) or glycogen depletion (Busse et al., 1991), and in patients with McArdle’s disease (Voduc et al., 2004). This suggests that physical effort is more causally linked with f_R than La^- .

Unlike $\dot{V}O_2$, heart rate (HR) and La^- , f_R shows an effort-like response during a variety of exercise paradigms. During both time-to-exhaustion and self-paced time trial protocols, f_R increases approximately linearly over time and approaches maximal values at the end of exercise. This response is observed during both continuous (Nicolò et al., 2016a) and intermittent (Nicolò et al., 2014a,b, 2017b) exercise of different duration, and with a variety of experimental interventions that affect performance. Moreover, unlike other physiological variables,

the time course of f_R is closely associated with that of Rating of Perceived Exertion (RPE) (Nicolò et al., 2014a, 2016a, 2017b). This association is found even after locomotor muscle fatigue (Marcora et al., 2008) and damage (Davies et al., 2009), inspiratory (Mador and Acevedo, 1991) and expiratory (Taylor and Romer, 2008) muscle fatigue, muscle glycogen depletion (Busse et al., 1991), increases in body temperature (Hayashi et al., 2006), hypoxia (Koglin and Kayser, 2013), ingestion of sodium bicarbonate (Robertson et al., 1986), prior endurance exercise (Spengler et al., 2000), and after expiratory muscle training (Suzuki et al., 1995). Conversely, HR, $\dot{V}O_2$, and La^- are partially dissociated from RPE under some of these experimental interventions. Therefore, f_R appears to be sensitive to different fatigue states, and thus may present potentially important implications for training and recovery monitoring. Furthermore, f_R may be a good predictor of time to exhaustion during constant-workload trials (Pires et al., 2011a,b) and can help understand how effort is distributed during self-paced time trials (Nicolò et al., 2014a, 2016a). The observation that f_R is a stronger correlate of RPE than other physiological variables is not novel (Noble et al., 1973; Robertson et al., 1986), and it has previously been proposed as a variable to monitor during training (James et al., 1989; Neary et al., 1995). However, the importance of f_R as a marker of physical effort has emerged from recent investigations (Nicolò et al., 2014a, 2016a, 2017b).

An important feature differentiating f_R from other physiological variables is the very fast response at exercise onset and offset. During sustained all-out exercise, f_R increases rapidly at the beginning of exercise and quickly reaches maximal values that are maintained throughout the trial, even where an exponential decrease in power-output occurs (Nicolò et al., 2015). A rapid response of f_R is also observed during the alternation of work and recovery phases characterizing high-intensity interval training (HIIT) (Nicolò et al., 2014b, 2017b). Furthermore, f_R changes in proportion to workload variations in work and recovery across different HIIT sessions (Nicolò et al., 2017b). This makes f_R a useful variable to describe the fast changes in effort that characterize HIIT (Figures 1A–C). In contrast, $\dot{V}O_2$ and HR do not respond abruptly to such changes in workload (Nicolò et al., 2014b, 2017b).

The experimental evidence for f_R as a marker of effort is substantiated by our understanding of the mechanisms underlying its regulation. One of the major regulators of ventilation during exercise is central command (Forster et al., 2012), i.e., the central neural drive associated with voluntary motor effort. Moreover, it has been suggested that central command regulates preferentially f_R rather than tidal volume (Nicolò et al., 2017b). Central command is also the sensory signal for perceived exertion (Marcora, 2009), and this provides a neurophysiological explanation for the association observed between perceived exertion and f_R . This is why in the present manuscript we refer to “physical effort” as a theoretical construct which is distinct from, but linked to, perceived effort. Physical effort can be defined as the degree of motor effort, (i.e., the magnitude of central command) (Nicolò et al., 2016b). For the applied sport scientists and practitioners, physical effort (and thereby f_R) reflects how hard, heavy and strenuous a physical task

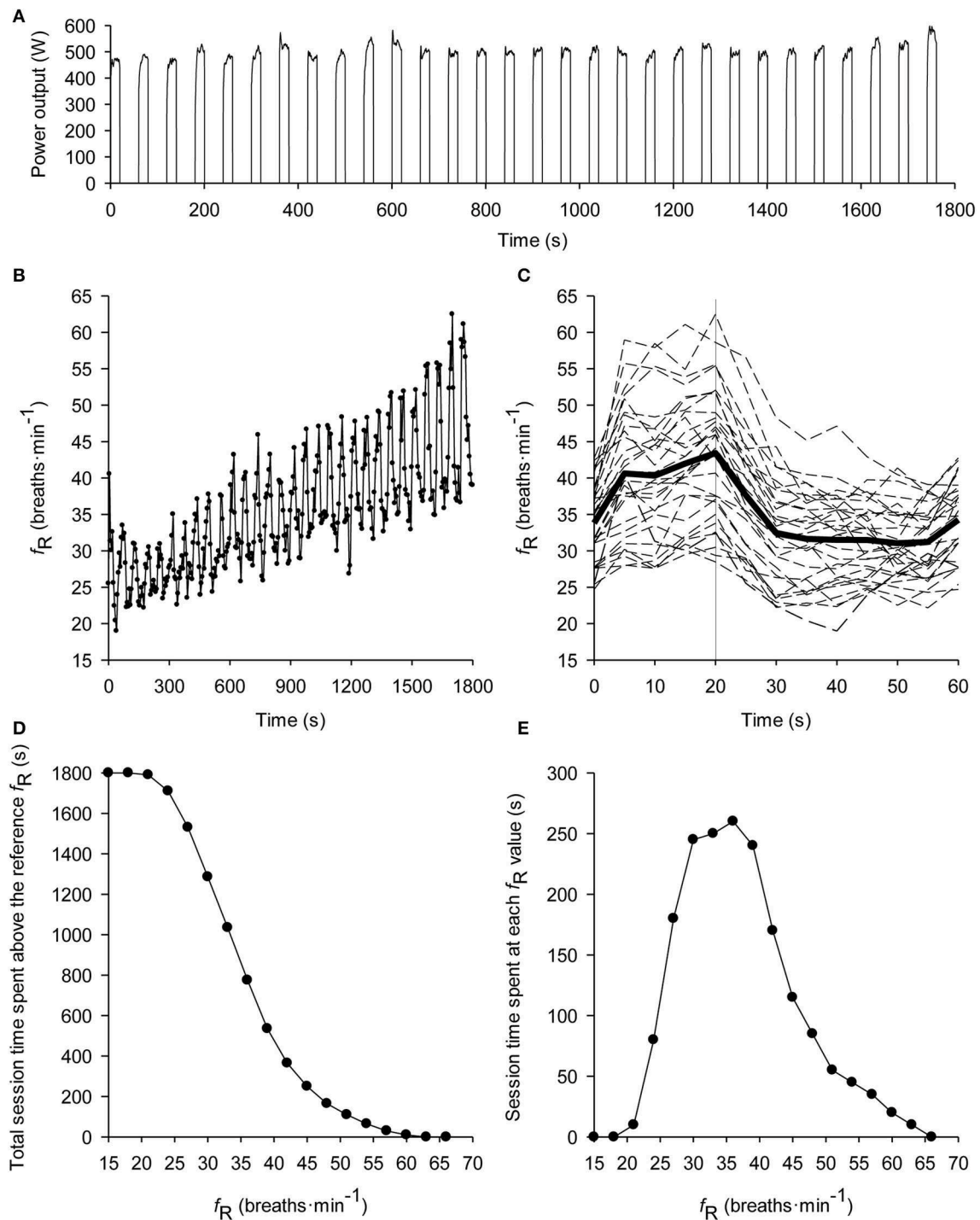


FIGURE 1 | Typical subject performing a 20-s work 40-s rest self-paced intermittent cycling time trial lasting 30 min (i.e., 30 repetitions). Data are from Nicolò et al. (2014a). The time course of power output is depicted in **(A)**. Of note, f_R responds very fast to the alternation of the work and recovery phases, and increases progressively over time **(B)**. The rapid change in f_R according to variations in workload can be better observed by showing the time course of f_R within the 60-s work-recovery cycle **(C)**. The solid thick line represents the average of the entire trial, the dashed lines represent each repetition and the solid vertical line separates the 20-s work from the 40-s recovery. For details on this analysis see Nicolò et al. (2014b). This is also a convenient representation to show f_R data real time during HIIT. In order to synthesize the effort of the training session, the f_R distribution **(D)** and concentration **(E)** profiles have also been constructed. The distribution profile describes the time spent above each f_R -value, while the concentration profile describes the time spent at each f_R -value. Both analyses can also be used to describe several training sessions. See Kosmidis and Passfield (2015) for more details on the two analyses.

is, whilst perception of effort is the conscious sensation of this physical task (Marcora, 2010).

Sports scientists and practitioners are therefore encouraged to consider f_R among the variables to monitor in training. Note, most of the evidence suggesting f_R to be a valid marker of effort comes from studies that used cycling as exercise modality, while less data are available on other exercise modalities. A similar f_R response was observed during incremental exercise performed either with legs or arms separately as well as with legs and arms combined, despite considerable differences in absolute $\dot{V}O_2$, workload and HR (Robertson et al., 1986). This suggests that f_R reflects the effort exerted during exercise irrespective of absolute workload, metabolic demand, and muscle masses involved. On the other hand, different ventilatory responses have been found when comparing running with cycling (Elliott and Grace, 2010). A different degree of entrainment (coupling between locomotion and breathing rhythms) between cycling and running is often proposed as an explanation for between-modality differences in f_R , but experimental evidence is conflicting. The entrainment phenomenon is well-documented in some sports like rowing, where high inter-individual variability in entrainment pattern is observed (Siegmund et al., 1999). Thus, for rowing a degree of caution is suggested in the interpretation of f_R until more research is conducted.

HOW TO MEASURE RESPIRATORY FREQUENCY IN THE FIELD

The limited consideration given to f_R in sport should not be ascribed to technical limitations. It is the easiest ventilatory variable to measure during exercise and several respiratory wearables have been developed. Directly, f_R can be measured with portable devices registering flow-rate at the mouth (e.g., flow sensors), but require the use of a facemask. These devices (e.g., K5, Cosmed, Rome, Italy) are accurate but relatively obtrusive and not well-suited to training monitoring. However, they are widely used as criterion devices for validating less obtrusive respiratory wearables. Indirectly, f_R can be measured using the strain and movements of the chest and abdomen induced by ventilation, the sound of breathing, or the effect that ventilation has on biosignals such as electrocardiogram (ECG) and photoplethysmogram (PPG). f_R can also be measured with sensors monitoring exhaled carbon dioxide, air temperature or humidity, but these sensors are not commonly considered for wearable solutions used in sport.

The majority of commercially-available respiratory wearables register ventilation-induced thoracic and/or abdominal strain through sensors embedded into straps or clothes. Commonly used sensors are inductive (Hexoskin[®], Carré Technologies Inc., Montreal, Que., Canada; LifeShirt[®], Vivometrics, Inc., Ventura, CA, U.S.A.; Equivital[™] EQ02 LifeMonitor[™], Hidalgo Cambridge, U.K.), piezo-electric (Pneumotrace II[™], UFI, Morro Bay, CA, USA), capacitive (Zephyr[™] BioHarness[™], Zephyr Technology, Auckland, New Zealand), and piezo-resistive (Wearable Wellness System[™], Smartex S.r.l., Italy). The accuracy of most of these respiratory wearables is good as assessed by

comparison with a flow sensor criterion device. For instance, a mean average difference (bias) \pm limits of agreement (LoA) of $\sim 0.3 \pm 2$ and 0.2 ± 2.4 breaths \cdot min⁻¹ was found for Hexoskin[®] during submaximal incremental walking (Villar et al., 2015) and for Equivital[™] EQ02 LifeMonitor during moderate-intensity walking and running (Liu et al., 2013), respectively. A bias \pm LoA of -0.1 ± 5.7 breaths \cdot min⁻¹ was found for LifeShirt[®] during a maximal incremental running test (Witt et al., 2006). A bias \pm LoA of -0.6 ± 5 and 0.2 ± 8.3 breaths \cdot min⁻¹ was found for Zephyr[™] BioHarness[™] during a maximal incremental running test and a prolonged moderate-intensity running trial in the heat, respectively (Kim et al., 2013). However, direct comparison of the accuracy of different strain sensors in estimating f_R during exercise is lacking, and requires further investigation.

Respiratory wearables positioned on the torso can be affected by non-respiratory chest and abdomen movements during locomotion. This problem is commonly addressed when respiratory wearables based on movement sensors are used like accelerometer-based devices registering chest and/or abdomen movements (i.e., inclination changes), and algorithms resilient to motion artifacts have been developed (Liu et al., 2011). Compared to the use of a single accelerometer, the estimation of f_R improved with a sensor fusion method combining accelerometer and gyro-sensor outputs (Yoon et al., 2014). An improvement of 4.6 and 9.54% was observed during treadmill interval training and resistance exercise, respectively, and this method was found suitable for real-time f_R monitoring (Yoon et al., 2014). Respiratory wearables based on magnetometers have also shown good agreement, with a bias \pm LoA of $\sim 0.2 \pm 3$ bpm breaths \cdot min⁻¹ during moderate walking (McCool et al., 2002). The combination of strain sensors with movement sensors capable of detecting motion artifacts might be an attractive solution for future development of respiratory wearables.

The sound of breathing is used in the clinical field for estimating f_R , but it has received little attention in sport (Peterson et al., 2014). Recording breathing sound during exercise may have some advantages in view of the relatively loud sounds produced, especially during high-intensity. Anecdotally, athletes report monitoring the breathing sounds of their opponents as a gauge of their physical effort during endurance competitions. However, environmental noise can interfere with the quality of the acoustic registration and may explain why little attention has been devoted to breathing sound so far.

It is well-established that ventilation affects the morphology of the ECG signal, and that f_R can be extracted from the ECG with different techniques (Helfenbein et al., 2014). A few encouraging attempts have also been made to derive f_R from ECG during cycling exercise (Bailón et al., 2006; Schumann et al., 2016). It is also documented that ventilation affects the PPG signal (Meredith et al., 2012), from which f_R can be extracted with appropriate computational processing (Charlton et al., 2016). The PPG signal is receiving growing attention in the sports wearable sector because of its simplicity of recording; for instance, it can be obtained from different body sites like the finger, the wrist and the earlobe. Nevertheless, data on the validity of f_R extracted from the PPG signal during exercise is sparse. In an early attempt made during cycling incremental exercise,

motion artifacts prevented a good estimation of f_R and the error of estimation increased with the increase in exercise intensity (Nakajima et al., 1996). Some of these problems may be overcome with the application of robust filters and appropriate computing techniques (Lee et al., 2011). However, more research is needed to evaluate whether f_R can be satisfactorily estimated from the ECG or the PPG signal during exercise.

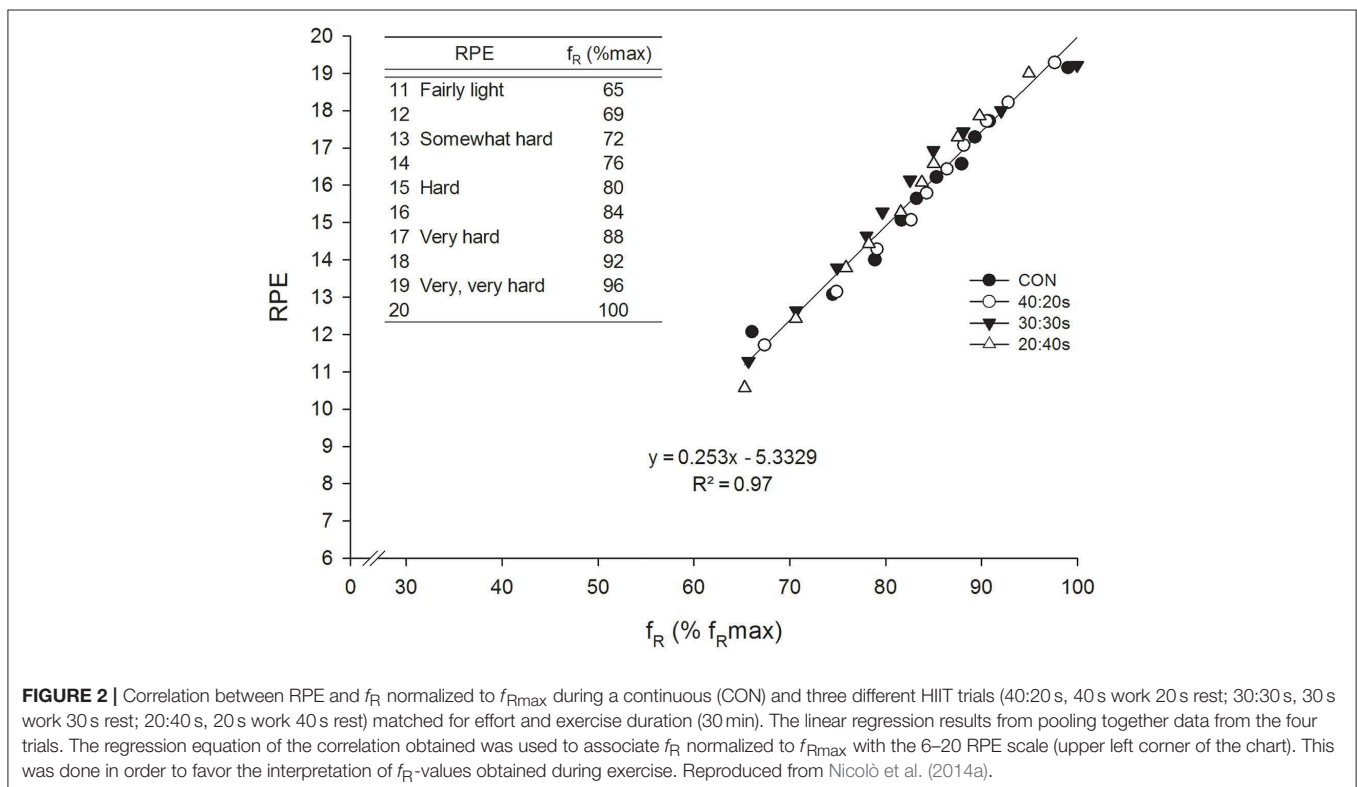
Work on the development of respiratory wearables is likely to increase from a technological point of view (including the computing sector), because a range of sensors and methods can be used to measure f_R . Therefore, we expect growing interest in the development of f_R -based wearables specifically designed for sporting activities, triggered by the understanding of the importance of f_R for training monitoring. Among the wearables currently available, those measuring chest strain are the most numerous, and their accuracy is generally good. However, the wearability of some of these devices needs to improve before use in monitoring training. Further validation studies are needed to guide sport scientists and practitioners on the choice of the suitable device. Validation studies have generally targeted few exercise modalities (mainly walking and running), and some devices have only been tested during moderate-intensity exercise.

HOW SHOULD RESPIRATORY FREQUENCY DATA BE ANALYZED?

Since we are at an early stage of training monitoring by means of f_R , this section aims to provide some initial guidelines on how to

deal with f_R data. It is important to point out that the variability of f_R is relatively high if compared to that of other physiological variables like HR (Faude et al., 2017). This is not necessarily a limitation because f_R is also sensitive to variations in performance induced by a variety of experimental interventions, indicating its relatively high signal-to-noise ratio. However, the variability issue should be considered when analyzing and interpreting f_R data. A breath-by-breath f_R dataset should be filtered for errant breaths (i.e., values resulting after coughs, sighs, swallows, etc.), as commonly performed for gas exchange analysis (Lamarra et al., 1987). Subsequently, data can be interpolated to 1-s intervals and bin averaged according to experimental or practical needs. Due to the inherent variability of f_R , the maximal value of f_R (f_{Rmax}) should not be taken from breath-by-breath values but from an average of no <10 s. For the same reason, average values should be displayed real time during training activities rather than breath-by-breath values.

The f_{Rmax} reached during maximal effort exercise is similar across different exercise paradigms and durations (Kift and Williams, 2007; Nicolò et al., 2014a,b, 2016a, 2017b), with few extreme exceptions (Nicolò et al., 2015). Therefore, different maximal exercise protocols appear to be suitable for measuring f_{Rmax} . It is convenient to normalize f_R to f_{Rmax} to develop prescription and monitoring strategies that can be generalized, since there is relatively high variability in f_{Rmax} across different individuals, and the factors determining this variability are not well-understood. The first attempt to interpret f_R data normalized to f_{Rmax} was made by Nicolò et al. (2014a). They found a strong correlation between f_R and RPE with similar values across a



continuous and three different HIIT trials matched for effort and exercise duration. Therefore, values from the four trials were considered together, and the regression equation of the correlation obtained was used to associate f_R normalized to f_{Rmax} with the well-known 6–20 RPE scale (Figure 2). For instance, a value of 80% f_{Rmax} approximately corresponded to an effort perceived as hard, and a value of 88% f_{Rmax} to an effort perceived as very hard, with clear implications for training prescription and monitoring. Indeed, f_R is an objective variable that can be measured continuously during exercise, while RPE is a subjective variable which can only be collected at discrete points in time. This approach could be improved further by normalizing f_R to the range of possible f_R -values available (from f_R measured at rest to f_{Rmax}), in a similar manner to the formula used to obtain the HR reserve (Karvonen and Vuorimaa, 1988). This normalization procedure could be used to provide objective real-time feedback on physical effort, with values conveniently ranging from 0 to 100. A real-time feedback could also allow athletes to voluntarily alter their breathing pattern as allegedly advised by some coaches, although the potential benefit of this practice is uncertain.

Different approaches may be used to synthesize f_R data from one or more training sessions. Unlike for HR, average f_R is similar across maximal-effort training sessions differing in the HIIT format of exercise or duration (Nicolò et al., 2014a, 2016a, 2017b). Therefore, average f_R may provide a simple preliminary description of the overall physical effort of a training session. However, more comprehensive analyses are required to fully examine the potential of f_R data. Two promising analyses conceived to analyze large datasets are the training distribution and the training concentration profiles described by Passfield and Hopker (2017). The training distribution profile shows the total session time spent above the reference f_R -value (which can be

interpreted as the reference level of effort), which assumes every possible value (Figure 1D). The training concentration profile is a concentration curve (i.e., the derivative of the distribution curve), which shows the cumulative time spent training at each f_R -value (effort level) (Figure 1E). f_R distribution and f_R concentration profiles would therefore provide a breakthrough in understanding training effort, which is currently summarized by a single session value of RPE.

CONCLUSION

In this perspective article, we aimed to present scientific evidence indicating the importance of monitoring f_R during training, and to propose possible methodologies and wearable sensors currently available to measure f_R in the field. We also provided indications on how to analyze and interpret f_R data. This is expected to benefit athlete training monitoring and the advancement of applied research in this area of sports science, and to stimulate the development and use of respiratory wearables specifically designed for sporting activities. That of f_R represents a good example of how wearable sensor development should follow athlete's needs and be informed by scientific findings.

AUTHOR CONTRIBUTIONS

All authors (AN, CM, and LP) contributed to the conception and design of the work, drafted the work or revised it critically for important intellectual content and approved the final version of the manuscript. All authors (AN, CM, and LP) agree to be accountable for all aspects of the work in ensuring that questions related to the accuracy or integrity of any part of the work are appropriately investigated and resolved.

REFERENCES

- Bailón, R., Sörnmo, L., and Laguna, P. (2006). A robust method for ECG-based estimation of the respiratory frequency during stress testing. *IEEE Trans. Biomed. Eng.* 53, 1273–1285. doi: 10.1109/TBME.2006.871888
- Busse, M. W., Maassen, N., and Konrad, H. (1991). Relation between plasma K⁺ and ventilation during incremental exercise after glycogen depletion and repletion in man. *J. Physiol.* 443, 469–476. doi: 10.1113/jphysiol.1991.sp018845
- Charlton, P. H., Bonnici, T., Tarassenko, L., Clifton, D. A., Beale, R., and Watkinson, P. J. (2016). An assessment of algorithms to estimate respiratory rate from the electrocardiogram and photoplethysmogram. *Physiol. Meas.* 37, 610–626. doi: 10.1088/0967-3334/37/4/610
- Cheng, A. C., Black, J. F., and Buising, K. L. (2008). Respiratory rate: the neglected vital sign. *Med. J. Aust.* 189, 531.
- Cretikos, M. A., Bellomo, R., Hillman, K., Chen, J., Finfer, S., and Flabouris, A. (2008). Respiratory rate: the neglected vital sign. *Med. J. Aust.* 188, 657–659.
- Cross, T. J., Morris, N. R., Schneider, D. A., and Sabapathy, S. (2012). Evidence of break-points in breathing pattern at the gas-exchange thresholds during incremental cycling in young, healthy subjects. *Eur. J. Appl. Physiol.* 112, 1067–1076. doi: 10.1007/s00421-011-2055-4
- Davies, R. C., Rowlands, A. V., and Eston, R. G. (2009). Effect of exercise-induced muscle damage on ventilatory and perceived exertion responses to moderate and severe intensity cycle exercise. *Eur. J. Appl. Physiol.* 107, 11–19. doi: 10.1007/s00421-009-1094-6
- Davies, R. C., Rowlands, A. V., Poole, D. C., Jones, A. M., and Eston, R. G. (2011). Eccentric exercise-induced muscle damage dissociates the lactate and gas exchange thresholds. *J. Sports Sci.* 29, 181–189. doi: 10.1080/02640414.2010.526626
- Düking, P., Hotho, A., Holmberg, H. C., Fuss, F. K., and Sperlich, B. (2016). Comparison of non-invasive individual monitoring of the training and health of athletes with commercially available wearable technologies. *Front. Physiol.* 7:71. doi: 10.3389/fphys.2016.00071
- Elliott, A. D., and Grace, F. (2010). An examination of exercise mode on ventilatory patterns during incremental exercise. *Eur. J. Appl. Physiol.* 110, 557–562. doi: 10.1007/s00421-010-1541-4
- Faude, O., Hecksteden, A., Hammes, D., Schumacher, F., Besenius, E., Sperlich, B., et al. (2017). Reliability of time-to-exhaustion and selected psycho-physiological variables during constant-load cycling at the maximal lactate steady-state. *Appl. Physiol. Nutr. Metab.* 42, 142–147. doi: 10.1139/apnm-2016-0375
- Forster, H. V., Haouzi, P., and Dempsey, J. A. (2012). Control of breathing during exercise. *Comprehens. Physiol.* 2012, 743–77. doi: 10.1002/cphy.c100045
- Gandevia, S. C., and McKenzie, D. K. (2008). Respiratory rate: the neglected vital sign. *Med. J. Aust.* 189, 532.
- Hailstone, J., and Kilding, A. E. (2011). Reliability and validity of the Zephyr™ BioHarness™ to measure respiratory responses to exercise. *Meas. Phys. Educ. Exerc. Sci.* 15, 293–300. doi: 10.1080/1091367X.2011.615671
- Hayashi, K., Honda, Y., Ogawa, T., Kondo, N., and Nishiyasu, T. (2006). Relationship between ventilatory response and body temperature

- during prolonged submaximal exercise. *J. Appl. Physiol.* 100, 414–420. doi: 10.1152/jappphysiol.00541.2005
- Helpfenbein, E., Firoozabadi, R., Chien, S., Carlson, E., and Babaeizadeh, S. (2014). Development of three methods for extracting respiration from the surface ECG: a review. *J. Electrocardiol.* 47, 819–825. doi: 10.1016/j.jelectrocard.2014.07.020
- James, N. W., Adams, G. M., and Wilson, A. F. (1989). Determination of anaerobic threshold by ventilatory frequency. *Int. J. Sports Med.* 10, 192–196. doi: 10.1055/s-2007-1024899
- Karvonen, J., and Vuorimaa, T. (1988). Heart rate and exercise intensity during sports activities. *Pract. Appl. Sports Med.* 5, 303–311. doi: 10.2165/00007256-198805050-00002
- Kift, J., and Williams, E. M. (2007). The respiratory time and flow profile at volitional exercise termination. *J. Sports Sci.* 25, 1599–1606. doi: 10.1080/02640410701275201
- Kim, J. H., Roberge, R., Powell, J. B., Shafer, A. B., and Jon Williams, W. (2013). Measurement accuracy of heart rate and respiratory rate during graded exercise and sustained exercise in the heat using the Zephyr BioHarness. *Int. J. Sports Med.* 34, 497–501. doi: 10.1055/s-0032-1327661
- Koglin, L., and Kayser, B. (2013). Control and sensation of breathing during cycling exercise in hypoxia under naloxone: a randomised controlled crossover trial. *Extrem. Physiol. Med.* 2:1. doi: 10.1186/2046-7648-2-1
- Kosmidis, I., and Passfield, L. (2015). Linking the performance of endurance runners to training and physiological effects via multi-resolution elastic net. *arXiv preprint 2015, arXiv:1506.01388*.
- Lamarra, N., Whipp, B. J., Ward, S. A., and Wasserman, K. (1987). Effect of interbreath fluctuations on characterizing exercise gas exchange kinetics. *J. Appl. Physiol.* 62, 2003–2012.
- Lee, J., Florian, J. P., and Chon, K. H. (2011). Respiratory rate extraction from pulse oximeter and electrocardiographic recordings. *Physiol. Meas.* 32, 1763–1773. doi: 10.1088/0967-3334/32/11/504
- Liu, G. Z., Guo, Y. W., Zhu, Q. S., Huang, B. Y., and Wang, L. (2011). Estimation of respiration rate from three-dimensional acceleration data based on body sensor network. *Telemed. J. E Health.* 17, 705–711. doi: 10.1089/tmj.2011.0022
- Liu, Y., Zhu, S. H., Wang, G. H., Ye, F., and Li, P. Z. (2013). Validity and reliability of multiparameter physiological measurements recorded by the equivalent lifemonitor during activities of various intensities. *J. Occup. Environ. Hyg.* 10, 78–85. doi: 10.1080/15459624.2012.747404
- Mador, M. J., and Acevedo, F. A. (1991). Effect of respiratory muscle fatigue on subsequent exercise performance. *J. Appl. Physiol.* 70, 2059–2065.
- Marcora, S. (2009). Perception of effort during exercise is independent of afferent feedback from skeletal muscles, heart, and lungs. *J. Appl. Physiol.* 106, 2060–2062. doi: 10.1152/jappphysiol.90378.2008
- Marcora, S. (2010). Counterpoint: afferent feedback from fatigued locomotor muscles is not an important determinant of endurance exercise performance. *J. Appl. Physiol.* 108, 454–456. doi: 10.1152/jappphysiol.00976.2009a
- Marcora, S. M., Bosio, A., and de Morree, H. M. (2008). Locomotor muscle fatigue increases cardiorespiratory responses and reduces performance during intense cycling exercise independently from metabolic stress. *Am. J. Physiol. Regul. Integr. Comp. Physiol.* 294, R874–R883. doi: 10.1152/ajpregu.00678.2007
- McCool, F. D., Wang, J., and Ebi, K. L. (2002). Tidal volume and respiratory timing derived from a portable ventilation monitor. *Chest* 122, 684–691. doi: 10.1378/chest.122.2.684
- Meredith, D. J., Clifton, D., Charlton, P., Brooks, J., Pugh, C. W., and Tarassenko, L. (2012). Photoplethysmographic derivation of respiratory rate: a review of relevant physiology. *J. Med. Eng. Technol.* 36, 1–7. doi: 10.3109/03091902.2011.638965
- Nakajima, K., Tamura, T., and Miike, H. (1996). Monitoring of heart and respiratory rates by photoplethysmography using a digital filtering technique. *Med. Eng. Phys.* 18, 365–372. doi: 10.1016/1350-4533(95)00066-6
- Neary, J. P., Bhambhani, Y. N., and Quinney, H. A. (1995). Validity of breathing frequency to monitor exercise intensity in trained cyclists. *Int. J. Sports Med.* 16, 255–259. doi: 10.1055/s-2007-973001
- Nicolò, A., Bazzucchi, I., Felici, F., Patrizio, F., and Sacchetti, M. (2015). Mechanical and electromyographic responses during the 3-min all-out test in competitive cyclists. *J. Electromyogr. Kinesiol.* 25, 907–913. doi: 10.1016/j.jelekin.2015.08.006
- Nicolò, A., Bazzucchi, I., Haxhi, J., Felici, F., and Sacchetti, M. (2014a). Comparing continuous and intermittent exercise: an “isoeffort” and “isotime” approach. *PLoS ONE* 9:e94990. doi: 10.1371/journal.pone.0094990
- Nicolò, A., Bazzucchi, I., Lenti, M., Haxhi, J., Scotto di Palumbo, A., and Sacchetti, M. (2014b). Neuromuscular and metabolic responses to high-intensity intermittent cycling protocols with different work-to-rest ratios. *Int. J. Sports Physiol. Perform.* 9, 151–160. doi: 10.1123/ijspp.2012-0289
- Nicolò, A., Girardi, M., and Sacchetti, M. (2017a). Control of the depth and rate of breathing: metabolic vs. non-metabolic inputs. *J. Physiol.* 595, 6363–6364. doi: 10.1113/JP275013
- Nicolò, A., Marcora, S. M., Bazzucchi, I., and Sacchetti, M. (2017b). Differential control of respiratory frequency and tidal volume during high-intensity interval training. *Exp. Physiol.* 102, 934–949. doi: 10.1113/EP086352
- Nicolò, A., Marcora, S. M., and Sacchetti, M. (2016a). Respiratory frequency is strongly associated with perceived exertion during time trials of different duration. *J. Sports Sci.* 34, 1199–1206. doi: 10.1080/02640414.2015.1102315
- Nicolò, A., Passfield, L., and Sacchetti, M. (2016b). Investigating the effect of exercise duration on functional and biochemical perturbations in the human heart: total work or isoeffort matching? *J. Physiol.* 594, 3157–3158. doi: 10.1113/JP272421
- Noble, B. J., Metz, K. F., Pandolf, K. B., and Cafarelli, E. (1973). Perceptual responses to exercise: a multiple regression study. *Med. Sci. Sports* 5, 104–109. doi: 10.1249/00005768-197300520-00020
- Parkes, R. (2011). Rate of respiration: the forgotten vital sign: racheal parkes explains why emergency department nurses should document the respiratory rates of all patients. *Emerg. Nurse* 19, 12–17. doi: 10.7748/en2011.05.19.2.12.c8504
- Passfield, L., and Hopker, J. G. (2017). A mine of information: can sports analytics provide wisdom from your data? *Int. J. Sports Physiol. Perform.* 12, 851–855. doi: 10.1123/ijspp.2016-0644
- Peterson, A. J., Foster, C., Yee, N. B., Stamatopolous, C. C., Giotis, P., Wright, G. A., et al. (2014). Acoustic analysis of breath sounds as a surrogate for gas exchange thresholds. *J. Sports Sci. Med.* 13, 219–220.
- Pires, F. O., Lima-Silva, A. E., Bertuzzi, R., Casarini, D. H., Kiss, M. A., Lambert, M. I., et al. (2011a). The influence of peripheral afferent signals on the rating of perceived exertion and time to exhaustion during exercise at different intensities. *Psychophysiology* 48, 1284–1290. doi: 10.1111/j.1469-8986.2011.01187.x
- Pires, F. O., Noakes, T. D., Lima-Silva, A. E., Bertuzzi, R., Ugrinowitsch, C., Lira, F. S., et al. (2011b). Cardiopulmonary, blood metabolite and rating of perceived exertion responses to constant exercises performed at different intensities until exhaustion. *Br. J. Sports Med.* 45, 1119–1125. doi: 10.1136/bjsm.2010.079087
- Robertson, R. J., Falkel, J. E., Drash, A. L., Swank, A. M., Metz, K. F., Spungen, S. A., et al. (1986). Effect of blood pH on peripheral and central signals of perceived exertion. *Med. Sci. Sports Exerc.* 18, 114–122. doi: 10.1249/00005768-198602000-00019
- Schumann, A., Schmidt, M., and Herbsleb, M. (2016). Deriving respiration from high resolution 12-channel-ECG during cycling exercise. *Curr. Dir. Biomed. Eng.* 2, 171–174. doi: 10.1515/cdbme-2016-0039
- Siegmund, G. P., Edwards, M. R., Moore, K. S., Tiessen, D. A., Sanderson, D. J., and McKenzie, D. C. (1999). Ventilation and locomotion coupling in varsity male rowers. *J. Appl. Physiol.* 87, 233–242.
- Spengler, C. M., Knöpfli-Lenzin, C., Birchler, K., Trapletti, A., and Boutellier, U. (2000). Breathing pattern and exercise endurance time after exhausting cycling or breathing. *Eur. J. Appl. Physiol.* 81, 368–374. doi: 10.1007/s004210050056
- Steichen, O., Grateau, G., and Bouvard, E. (2008). Respiratory rate: the neglected vital sign. *Med. J. Aust.* 189, 531–532.
- Suzuki, S., Sato, M., and Okubo, T. (1995). Expiratory muscle training and sensation of respiratory effort during exercise in normal subjects. *Thorax* 50, 366–370. doi: 10.1136/thx.50.4.366
- Taylor, B. J., and Romer, L. M. (2008). Effect of expiratory muscle fatigue on exercise tolerance and locomotor muscle fatigue in healthy humans. *J. Appl. Physiol.* 104, 1442–1451. doi: 10.1152/jappphysiol.00428.2007
- Villar, R., Beltrame, T., and Hughson, R. L. (2015). Validation of the Hexoskin wearable vest during lying, sitting, standing, and walking activities. *Appl. Physiol. Nutr. Metab.* 40, 1019–1024. doi: 10.1139/apnm-2015-0140

- Voduc, N., Webb, K. A., D'Arsigny, C., McBride, I., and O'Donnell, D. E. (2004). McArdle's disease presenting as unexplained dyspnea in a young woman. *Can. Respir. J.* 11, 163–167. doi: 10.1155/2004/934024
- Witt, J. D., Fisher, J. R., Guenette, J. A., Cheong, K. A., Wilson, B. J., and Sheel, A. W. (2006). Measurement of exercise ventilation by a portable respiratory inductive plethysmograph. *Respir. Physiol. Neurobiol.* 154, 389–395. doi: 10.1016/j.resp.2006.01.010
- Yoon, J., Noh, Y., Kwon, Y., and Kim, W. (2014). Improvement of dynamic respiration monitoring through sensor fusion of accelerometer and gyroscope. *J. Electr. Eng. Technol.* 9, 334–343. doi: 10.5370/JEET.2014.9.1.334

Conflict of Interest Statement: The authors declare that the research was conducted in the absence of any commercial or financial relationships that could be construed as a potential conflict of interest.

Copyright © 2017 Nicolò, Massaroni and Passfield. This is an open-access article distributed under the terms of the Creative Commons Attribution License (CC BY). The use, distribution or reproduction in other forums is permitted, provided the original author(s) or licensor are credited and that the original publication in this journal is cited, in accordance with accepted academic practice. No use, distribution or reproduction is permitted which does not comply with these terms.