



**Manchester  
Metropolitan  
University**

---

Higginbottom, T and Symeonakis, Ilias (2017) *Shrub Encroachment in South African Savannas: a CO2 Fertilisation Effect?* In: EGU General Assembly, 23 April 2017 - 28 April 2017, Vienna, Austria. (Unpublished)

---

**Downloaded from:** <http://e-space.mmu.ac.uk/622294/>

**Version:** Presentation

Please cite the published version

<https://e-space.mmu.ac.uk>

# Shrub Encroachment in South African Savannas: a CO<sub>2</sub> Fertilisation Effect?

Tom Higginbottom & Elias Symeonakis (T.Higginbottom@mmu.ac.uk)

Manchester Metropolitan University, UK



Manchester Metropolitan University



## 1- Introduction

Increases in woody cover are occurring across all savannah and grassland biomes.

There are three competing hypotheses to explain woody encroachment:

- Land Use:** overgrazing and fire suppression, encourage seedling survival,
- Rainfall Variation:** increases in rainfall/ variability favour woody cover at grassland expense
- Carbon fertilisation:** atmospheric Carbon increases helps shrubs through improved Water Use Efficiency

## 2- Aim

Determine the relative contribution of natural and anthropogenic factors on woody encroachment likelihood.

## 3- Study Area: Limpopo Province, South Africa

## 4- Methods

- Two **Landsat-derived fractional woody cover** maps, 5-year epochs using all observations as spectral metrics, **1984-198 2008-2012**
- Percentage change in woody cover calculated
- Series of explanatory variables collated
- Generalised Additive Model (GAM)** to model variable contributions.

### Explanatory Variables:

#### Rainfall factors- derived from TAMSAT:

- 1-3: Mean Annual Precipitation + SD + CV
  - 4- MAP trend 1983-2010,
  - 5-7: Mean wet season precip , + SD + CV
  - 8-9: Mean rainy days, + SD
  - 10-11: Wet season rainy days, + SD
  - 12:- Percent of rainy days in wet season
- 2-d smoother to account for spatial autocorrelation

#### Natural Factors:

- 1: Sand Content
- 2: Organic Content
- 3: Soil Class
- 4: Geology

#### Human Factors:

- 1: Land Use Category
- 2: Fire Frequency

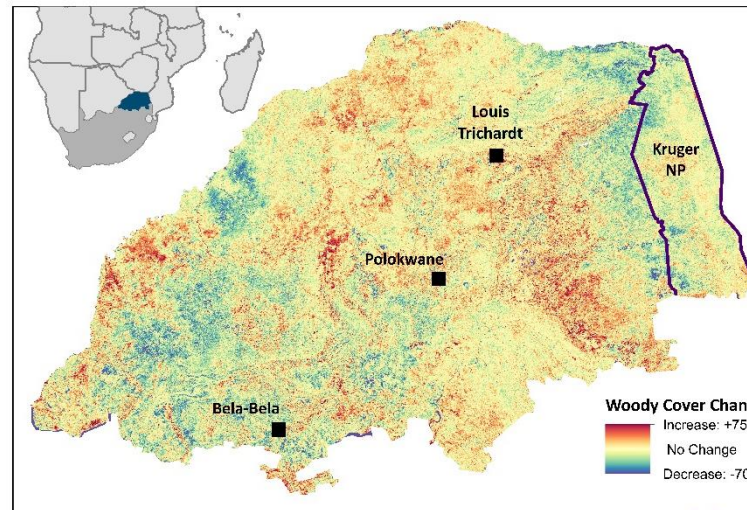
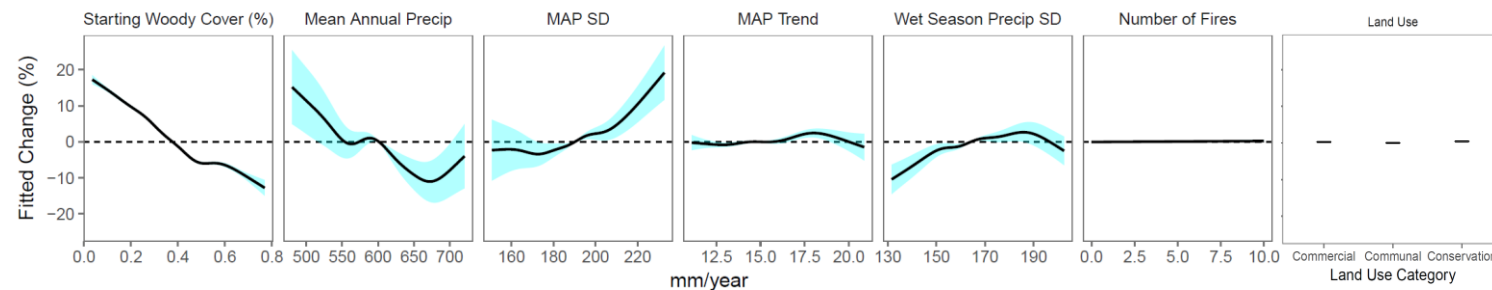


Figure 1: Woody Cover Change (%) 1986-2010

Figure 2: Smooth functions from the GAM

### Key Explanatory Variables

Low cover and low rainfall areas most likely to increase in woody cover; high rainfall variability also contributes



## GAM Statistics:

$R^2 \approx -0.4$

N= 29964

REML=  $1.06 \times 10^5$

Scale Est.= 70.4

**All variables significant**, with **exception** of: fire, land use, and some soil/geology factors

## 5- Results & Discussion

### Carbon Fertilisation

- I. Low rainfall & low woody cover savannas were most prone to woody cover increases
- II. This is consistent with a Carbon fertilisation hypothesis, as water use efficiency gain will be most pronounced in water limited systems

### Human Factors

- I. Fire and land use were insignificant variables
- II. May be a data issue, land use processes (e.g. specific actions, stocking rates) potentially more relevant than category

### Rainfall Variation

- I. Large trends in rainfall have a minor effect
- II. High variability increases potential of increases

## 6- Conclusion

We conclude that woody encroachment in South African savannas is most likely a response to Carbon fertilisation, with rainfall regime playing a role in susceptibility.

We found land use to be an insignificant factor, although future work is needed to fully confirm this.