

Research Article

RMSE-ELM: Recursive Model Based Selective Ensemble of Extreme Learning Machines for Robustness Improvement

Bo Han,¹ Bo He,¹ Mengmeng Ma,¹ Tingting Sun,¹ Tianhong Yan,² and Amaury Lendasse^{3,4}

¹ School of Information and Engineering, Ocean University of China, Shandong, Qingdao 266000, China

² School of Mechanical and Electrical Engineering, China Jiliang University, Zhejiang, Hangzhou 310018, China

³ Department of Mechanical and Industrial Engineering and the Iowa Informatics Initiative, The University of Iowa, Iowa City, IA 52242-1527, USA

⁴ Arcada University of Applied Sciences, 00550 Helsinki, Finland

Correspondence should be addressed to Bo He; bhe@ouc.edu.cn and Tianhong Yan; thyan@i63.com

Received 7 August 2014; Revised 14 September 2014; Accepted 22 September 2014; Published 9 October 2014

Academic Editor: Tao Chen

Copyright © 2014 Bo Han et al. This is an open access article distributed under the Creative Commons Attribution License, which permits unrestricted use, distribution, and reproduction in any medium, provided the original work is properly cited.

For blended data, the robustness of extreme learning machine (ELM) is so weak because the coefficients (weights and biases) of hidden nodes are set randomly and the noisy data exert a negative effect. To solve this problem, a new framework called “RMSE-ELM” is proposed in this paper. It is a two-layer recursive model. In the first layer, the framework trains lots of ELMs in different ensemble groups concurrently and then employs selective ensemble approach to pick out an optimal set of ELMs in each group, which can be merged into a large group of ELMs called candidate pool. In the second layer, selective ensemble approach is recursively used on candidate pool to acquire the final ensemble. In the experiments, we apply UCI blended datasets to confirm the robustness of our new approach in two key aspects (mean square error and standard deviation). The space complexity of our method is increased to some degree, but the result has shown that RMSE-ELM significantly improves robustness with a rapid learning speed compared to representative methods (ELM, OP-ELM, GASEN-ELM, GASEN-BP, and E-GASEN). It becomes a potential framework to solve robustness issue of ELM for high-dimensional blended data in the future.

1. Introduction

In recent two or three decades, neural networks are increasingly popular in machine learning community. Specifically for recent five years, lots of researchers mainly have paid their attention on deep structures such as deep Boltzmann machine [1] and convolution neural network [2]. However, the deep networks are hardly applied into real-time area in big data era because of two reasons: first of all, there is no free lunch in any algorithms. Though the training accuracy of deep network is pretty high, the training time is so long that we can hardly bear the computational cost [3]. Secondly, the deep structures tend to fall into the pit called “overfitting,” which means that it has a bad generalization. What is more is that the tuning of parameters in deep networks is very time consuming [4]. So the shallow structure is naturally our intuition for big data analysis and real-time application.

Recently, the extreme learning machine (ELM) [5] as an emerging branch of shallow networks was proposed by Huang et al. It was evolved from single hidden layer feed-forward networks (SFLNs). It has shown the excellent generalization performance and fast learning speed compared to deep belief networks [6] or deep Boltzmann machines [7]. In essence, the algorithm of ELM has two main steps: in the first step, the input weights and biases can be assigned randomly, which will definitely reduce computational cost because they do not need to be tuned manually. In the second step, the output weights of ELM can be computed easily by the generalized inverse of hidden layer output matrix and target matrix [8]. In terms of the computational performance of ELM, it tends to reach not only the smallest training error but also the smallest norm of output weights with rapid speed. Based on above merits of ELM, a lot of researchers in machine learning community now increasingly customize

their own frameworks based on ELM for specific issues. For equalization problems, ELM based complex-valued neural networks are a powerful tool. For regression or multilabel issues, the kernel based ELM proposed by Huang et al. is effective [9, 10]. For generalization problem, incremental ELM [11] outperforms many representative algorithms like SVM [12], stochastic BP [13], and so on. What is more is that various extended ELMs also attract our attention. For example, online sequential ELM [14] is an efficient learning algorithm to handle both additive [15] and RBF [16, 17] nodes in the unified framework. In complex dimensional space, the kernel implementation of ELM is superior to conventional SVM. From the above discussion, we can conclude that ELM is an excellent algorithm for different issues in machine learning area.

However, as the keynote given by Huang et al. indicate, the robustness analysis is still one of the open problems in ELM community [5, 18]. Different researchers have different research styles to tackle with the same problem. Previously, Rong et al. presented pruning algorithm called P-ELM to improve the robustness of ELM [19]. And also Míche et al. proposed an algorithm called OP-ELM [20, 21] to improve the robustness due to its variable selection mechanism, which removes the irrelevant variables from blended data efficiently [21, 22]. However, for blended data (namely, the raw data is blended with noisy data), they do not work very well because of two reasons. First, the mechanism of variables pruning is very time consuming. What is more is that the standard deviations of training error in the above two models are relatively high, which means that these models are not the top choice for robustness improvement. If we want to improve the robustness of original ELM, we should initially clarify why the ELM is so weak for blended data. First of all, we believe ELM sets its initial weights and biases randomly, which largely reduce the computational time but cannot guarantee the suitable parameters of hidden nodes for good robustness. Second, the noisy data exert a negative effect on robustness of ELM. So for blended data, my initial intuition is that if we train a batch of different ELMs and then ensemble them averagely, we might improve the robustness because of Hansen and Salamon's theory [23]. It proved that the robustness performance of a single network can be improved by an ensemble of neural networks. Krogh and Sollich [24] confirmed it later. Thus, based on this theory, Sun et al. proposed the average weighted ELM ensemble [25], which has a better generalization than original ELM on raw data. But on blended data, the average weighted ELM ensemble does not work well because it is negatively affected by noisy data such as Gaussian noise or uniform noise. Zhou et al. [26] proposed a new framework called GASEN, which can resist the negative effect from noisy data. In his theory, the ensemble of several optimal networks may be better than the ensemble of all networks. The GASEN is fully based on genetic algorithm and back-propagation (BP) neural networks. Therefore, in real-time area, we should not apply GASEN directly for robustness improvement because of high computation cost.

Inspired by above observations, for blended data [27], we hope to create a new computational framework, which

not only improves the robustness largely but also keeps a rapid learning speed. So in this paper, a new approach called "RMSE-ELM" is proposed. Our tuition can be concluded into two aspects: first, selective ensemble approach is an effective tool to resist noisy data but the kernel of framework is usually the BP networks. What is more is that the genetic algorithm itself is a little bit complicated. Therefore, the training process is so time consuming [28]. So we hope to employ the advantage of ELM to speed up the selective ensemble approach. Second, in cognitive science, the information processing of human brain is constructed hierarchically, and it can extract different useful information layer by layer. However, the more layers we construct, the more parameters the algorithm will learn, which will definitely increase the computational cost. Therefore, we hope to construct a semishallow framework for a good compromise between robustness and computational cost. For technical details, it is a two-layer recursive model. In the first layer, we concurrently train lots of ELMs in different groups and then we employ selective ensemble approach to pick out several ELMs in each group, which can be transmitted into the second layer called candidates pool. In the second layer, we employ selective ensemble approach recursively to pick out several ELMs for the average ensemble. In the experiments, we apply UCI blended datasets [29] to confirm the robustness of new method, which is compared to that of several methods such as ELM, OP-ELM, GASEN-ELM, GASEN-BP, and E-GASEN in two key aspects: mean square error and standard deviation. Though the space complexity of our method is increased to some degree, the results have shown that the RMSE-ELM significantly improves the robustness with a rapid learning speed. We will further explore how many layers can achieve the optimal compromise between the robustness and computational cost in our framework. The extended RMSE-ELM has a great potential to be a trend framework to solve robustness issue of ELM for high-dimensional blended data in the future.

We organize the rest of the paper as follows. In Section 2, we discuss previous work on classical ELM and selective ensemble. In Section 3 we describe our new method called RMSE-ELM from structure to theory. In Section 4, for UCI blended datasets, several experimental results on ELM, OP-ELM, GASEN-ELM, GASEN-BP, and E-GASEN are reported, respectively. In Section 5, we present our discussions of the motivation of benchmark selection and other facts revealed by experiments. Finally, in Section 6, conclusions are drawn and future work and direction are indicated.

2. Previous Works

2.1. Extreme Learning Machine. Extreme learning machine (ELM) has been developed to obtain a much faster learning speed and higher generalization performance both in the regression and classification problem. The essence of ELM is the hidden layers of SFLNs which need not be tuned iteratively [5, 30]; that is, the parameters of the hidden nodes which include input weights and biases can be randomly generated and then it only needs to solve the output weights. The structure of ELM is shown in Figure 1.

Input: The N training set $\{x_i, y_i\}_{i=1}^N$, the activation function $G(\omega_t, b_t, x_i)$, and the number of hidden nodes L .

Steps:

- (1) Randomly generate input weights ω_t and biases $b_t, t = 1, \dots, L$
- (2) Calculate the hidden layer output matrix H .
- (3) Calculate the output weight vector $\beta = H^\dagger Y$.

ALGORITHM 1: Extreme learning machine.

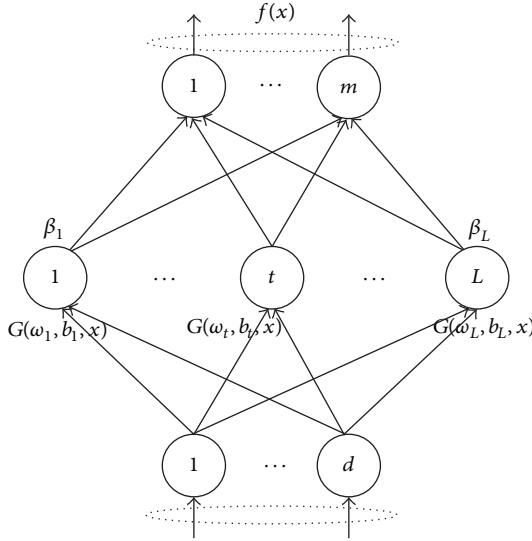


FIGURE 1: The structure of ELM algorithm.

For the given N learning samples $\{x_i, y_i\}_{i=1}^N$, where $x_i = [x_{i1}, \dots, x_{id}]'$ and $y_i = [y_{i1}, \dots, y_{im}]'$, the standard model of the ELM learning with L hidden neurons and activation function $G(\omega_t, b_t, x_i)$ can be written as

$$\sum_{t=1}^L \beta_t G(\omega_t, b_t, x_i) = o_i, \quad i = 1, \dots, N, \quad (1)$$

where $\omega_t = [\omega_{t1}, \dots, \omega_{td}]'$ is the weight vector connecting the t th hidden neuron and the input neurons. $\beta_t = [\beta_{t1}, \dots, \beta_{tm}]'$ denotes the weight vector connecting the t th hidden neuron and the output neurons. b_j is the bias of the t th hidden neuron.

ELM can approximate these N samples with zero error meaning that

$$\sum_{i=1}^N \|o_i - y_i\| = 0. \quad (2)$$

Namely, there exist (ω_j, b_j) and β_j such that

$$\sum_{t=1}^L \beta_t G(\omega_t, b_t, x_i) = y_i, \quad i = 1, \dots, N. \quad (3)$$

The activation function $G(\omega_t, b_t, x_i)$ can be arbitrarily chosen from the sigmoid function, the hard-limit function, the

Gaussian function, the multiquadric function, and any other function which is infinitely differentiable in any interval so that the hidden layer parameters can be randomly generated. The above equation can also be written compactly as

$$H\beta = Y, \quad (4)$$

where

$$H = \begin{bmatrix} G(\omega_1, b_1, x_1) & \dots & G(\omega_L, b_L, x_1) \\ \vdots & & \vdots \\ G(\omega_1, b_1, x_N) & \dots & G(\omega_L, b_L, x_N) \end{bmatrix}_{N \times L}, \quad (5)$$

$$\beta = [\beta_1', \dots, \beta_L']'_{L \times m},$$

$$Y = [y_1', \dots, y_N']'_{N \times m}.$$

Here H is called the hidden layer output matrix of the neural network. When the training set x_i is given and the parameters (ω_t, b_t) are randomly generated, matrix H can be obtained. And then the output weights β can be generated as

$$\beta = H^\dagger Y, \quad (6)$$

where H^\dagger denotes the Moore-Penrose generalized inverse of matrix H [31, 32].

In summary, the ELM algorithm can be presented as in Algorithm 1.

2.2. Selective Ensemble. In recent years, ensemble learning has received lots of attention from machine learning community due to its potential to improve the generalization capability of a learning system [33, 34]. With the increase of size, the prediction speed of an ensemble machine decreases significantly but its storage increases quickly. Zhou et al. [35] have proved that many could be better than all and proposed a new framework called selective ensemble. The aim of selective ensemble learning is to further improve the prediction accuracy of an ensemble machine, to enhance its prediction speed, and to decrease its storage need. Selective ensemble learning mainly involves three steps [36].

(1) The first is training a set of base learners individually generated from bootstrap samples of a fixed training data.

(2) The second is selecting right components from all the available learners and excluding the bad base learners to form an optimal ensemble. Genetic algorithm is used for components selection. The population of base learners

is encoded as real chromosomes so that one bit represents the average weight of initial learner ensemble. Suppose x is randomly sampled through a distribution $p(x)$, and the expected output is y , and the output of the i th base ELM is $f_i(x)$. The optimum weight ω^* is expressed as empirical equation (7) which minimizes the generalization error of the ensemble model

$$\omega^* = \arg \min_{\omega} \left(\sum_{i=1}^N \sum_{j=1}^N \omega_i \omega_j C_{ij} \right), \quad (7)$$

where C_{ij} is the correlation between the i th and the j th individual base learner. And the definition is as follows:

$$C_{ij} = \int dx p(x) (f_i(x) - y)(f_j(x) - y). \quad (8)$$

Therefore, the k th ($k = 1, \dots, N$) of optimum weight ω^* can be solved by Lagrange multiplier, which satisfies

$$\omega_k^* = \frac{\sum_{j=1}^N c_{kj}^{-1}}{\sum_{i=1}^N \sum_{j=1}^N c_{ij}^{-1}}. \quad (9)$$

Genetic algorithm based selective ensemble assigns a random weight to every base ELM first. Then, genetic algorithm is used to evolve those weights so that they can characterize the fitness of the ELM in joining the ensemble to some extent.

(3) The third is combining the selected base learner components to get the final predictions.

3. New Method

3.1. The Structure of RMSE-ELM. Inspired by the above discussions, for blended data, we hope to create a new computational framework, which not only improves the robustness performance of ELM largely but also keeps a rapid learning speed. We naturally have two tuitions below.

First of all, traditional selective ensemble approach like GASEN algorithm is definitely an effective tool to resist noisy data because it utilizes fewer but better individual models to ensemble, which achieves stronger generalization ability. But both genetic algorithms employed by GASEN and the training process of individual kernels (BPs) are so time consuming, which can hardly be used in industry or real-time situation. So we hope to build our customized selective ensemble based on ELM kernels because of its rapid learning speed.

Secondly, from the point of view of cognitive science, the information processing of human brain is constructed hierarchically, and it can extract different useful information layer by layer. However, if we completely construct our networks as our brain, for example, a deep-layer network, we may encounter several training problems. Firstly, the training time is so long that we can rarely bear the computational cost, not to mention big data analysis. Secondly, the deep structures tend to fall into the pit called “overfitting” which in turn means the weak generalization. Moreover, the tuning of parameters in deep networks needs large amount of time and

personal experience. So the semishallow structure is naturally top choice for big data analysis and real-time application.

In this paper, we present a framework called “RMSE-ELM” to improve the robustness of ELM for blended data with acceptable computational cost. The figure of our framework shows in Figure 2.

Just as in Figure 2, it is a two-layer recursive model, which is a good compromise between shallow and deep network. In the first layer, we concurrently train lots of ELMs that belong to the different ensemble groups and then we employ selective ensemble approach to pick out several ELMs in each group, which can be transmitted into our second layer, the pool of better candidates. In the second layer, we employ selective ensemble recursively to pick from selected ELMs and then ensemble an optimal set of ELMs to acquire the final result.

Although our framework is relatively simple compared with deep structure networks, we believe that it locates in the right track to solve the robustness issues of ELM.

3.2. The Theory of RMSE-ELM. Now let us first analyze our framework in theory. From above discussion, we can clearly see our framework recursively employ selective ensemble approach. In essence, the recursive model algorithm based selective ensemble can be explained as the hierarchical model based selective ensemble. So if the selective ensemble can work well, theoretically, the recursive model based selective ensemble can work better.

So firstly we should analyze whether the selective ensemble of extreme learning machine is good enough. Please note currently the individual networks are ELMs instead of BP networks. To be honest, it is not an easy task excluding the bad ELMs from our target group. In order to generate the ensemble ELM with small size but stronger generation ability, genetic algorithm is used to select the ELM models with high fitness from a set of available ELMs. Suppose that the learning task is to approximate a function $f: R^m \rightarrow R^n$; it can be represented by an ensemble of N base ELM learners. The predictions of the base ELM learners are combined by weighted averaging, where a weight ω_i ($i = 1, \dots, N$) is assigned to the individual base ELM learner f_i ($i = 1, \dots, N$), and ω_i satisfies

$$0 \leq \omega_i \leq 1, \quad \sum_{i=1}^N \omega_i = 1. \quad (10)$$

Then the output of ensemble is

$$\bar{f}(x) = \sum_{i=1}^N \omega_i f_i(x), \quad (11)$$

where f_i is the output of the i th base ELM learner.

We assume that each base ELM learner has only one output. Suppose $x \in R^m$ is randomly sampled through a distribution $p(x)$. And the target for x is $d(x)$. Then the error

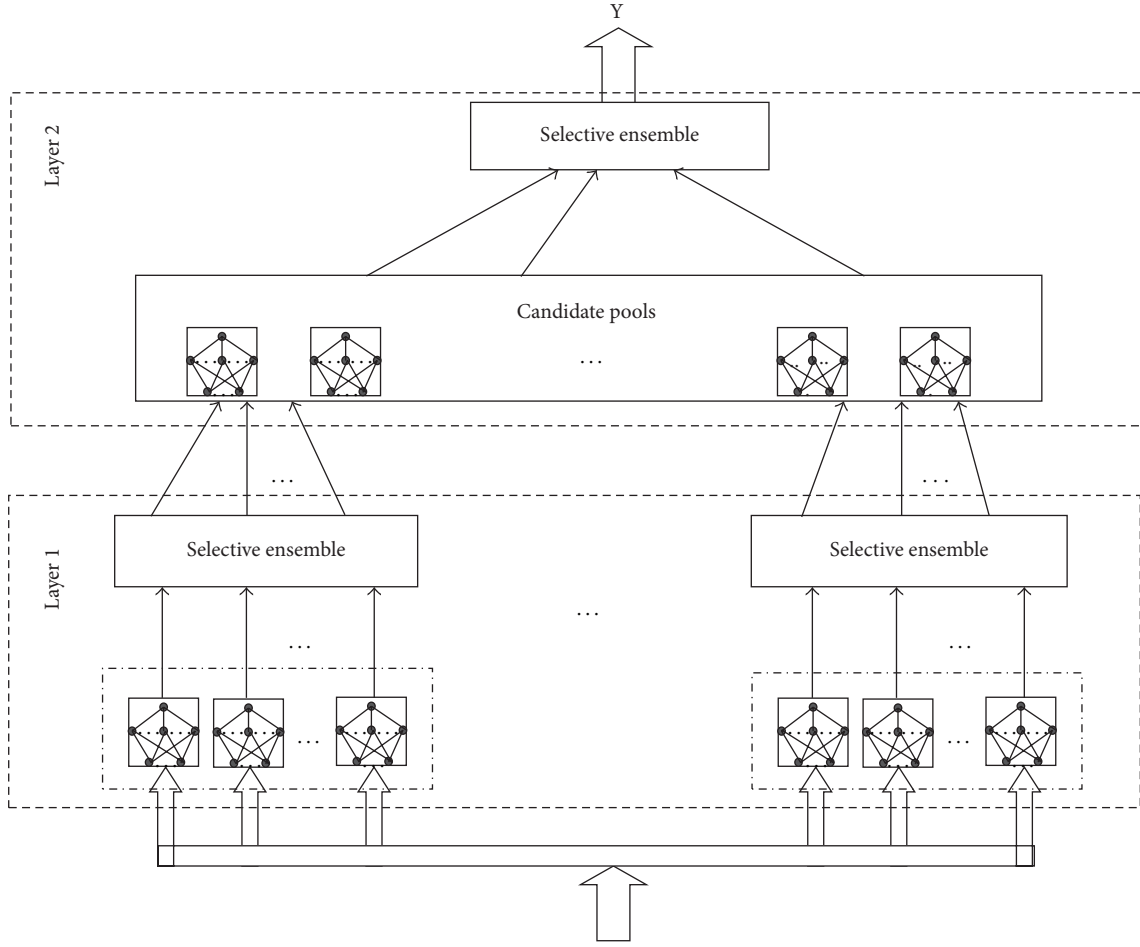


FIGURE 2: The framework of RMSE-ELM.

$E_i(x)$ of the i th base ELM learner and the error $E(x)$ of the ensemble on input x are, respectively,

$$E_i(x) = (f_i(x) - d(x))^2, \quad (12)$$

$$E(x) = (\bar{f}(x) - d(x))^2. \quad (13)$$

Then the generalization error E_i of the i th base ELM learner and the generalization error E of the ensemble on the distribution $p(x)$ are, respectively,

$$E_i = \int dx p(x) E_i(x), \quad (14)$$

$$E = \int dx p(x) E(x). \quad (15)$$

Define the correlation between the i th and the j th individual base ELM learner as

$$C_{ij} = \int dx p(x) (f_i(x) - d(x)) (f_j(x) - d(x)). \quad (16)$$

Apparently, C_{ij} satisfies

$$C_{ii} = E_i, \quad C_{ij} = C_{ji}. \quad (17)$$

According to (11) and (13),

$$E(x) = \left(\sum_{i=1}^N \omega_i f_i(x) - d(x) \right) \left(\sum_{j=1}^N \omega_j f_j(x) - d(x) \right). \quad (18)$$

Then according to (15), (16), and (18),

$$E = \sum_{i=1}^N \sum_{j=1}^N \omega_i \omega_j C_{ij}. \quad (19)$$

When the base ELM learners are combined by the simple ensemble method; that is $\omega_i = 1/N$ for every i ; we have

$$E = \sum_{i=1}^N \sum_{j=1}^N \frac{C_{ij}}{N^2}. \quad (20)$$

Now, we assume that the k th base learner is omitted; the new generalization error \hat{E}

$$\hat{E} = \sum_{i=1, i \neq k}^N \sum_{j=1, j \neq k}^N \frac{C_{ij}}{(N-1)^2}. \quad (21)$$

According to (14), the generalization error of the k th base ELM learner

$$E_k = \int dx p(x) E_k(x). \quad (22)$$

Therefore,

$$E - \hat{E} = \frac{2 \sum_{i=1, i \neq k}^N C_{ik} + E_k - (2N - 1) E}{(N - 1)^2}. \quad (23)$$

So if

$$2 \sum_{i=1, i \neq k}^N C_{ij} + E_k - (2N - 1) E > 0. \quad (24)$$

Then,

$$E > \hat{E} \quad (25)$$

which means new ensemble omitting the k th learner is now more robust than original ensemble.

So we can get a constraint condition from (24) and (25):

$$(2N - 1) \hat{E} < (2N - 1) E < 2 \sum_{i=1, i \neq k}^N C_{ik} + E_k. \quad (26)$$

If we multiply (26) by $(N - 1)^2$,

$$(2N - 1) (N - 1)^2 \hat{E} < 2(N - 1)^2 \sum_{i=1, i \neq k}^N C_{ik} + (N - 1)^2 E_k. \quad (27)$$

According to (21) and (27), the constraint condition can be deduced as follows:

$$(2N - 1) \sum_{i=1, i \neq k}^N \sum_{j=1, j \neq k}^N C_{ij} < 2(N - 1)^2 \sum_{i=1, i \neq k}^N C_{ik} + (N - 1)^2 E_k. \quad (28)$$

Therefore, it is proved that when using the simple ensemble method and when constraint condition (28) is satisfied, then omitting the k th base learner will improve the ensemble's generalization ability.

There is a conclusion that after lots of ELMs are trained, ensemble of an appropriate subset of them is superior to ensemble of all of them in some cases. The individual ELMs that should be omitted satisfy (28). This result implies that the ensemble does not use all the networks to achieve good performance. Therefore, the selective ensemble of ELM can work well.

According to the above proofs, the recursive model based selective ensemble of extreme learning machine might be better than the selective ensemble of extreme learning machine because of three reasons below: firstly, the best result comes from the better results more easily, so if the first layer of our framework can effectively select an optimal group of different ELMs, the second layer has a great potential to

produce a better result based on an optimal group of ELMs. Secondly, from the network structure, the recursive model based selective ensemble can be explained as the hierarchical model based selective ensemble. And the RMSE-ELM is a natural extension of selective ensemble of extreme learning machine. Therefore, if each part can work well, the whole system can work well at least. Finally, lots of experiments in recent years have shown that if more neural networks are included, in some cases the generalization error of the ensemble might be further reduced.

From above theoretical discussion, we see why the recursive model based selective ensemble of extreme learning machine can work better. However, we will further explore how many layers can achieve the optimal compromise between robustness and computational cost. The pseudocode of our current framework is organized as shown in Algorithm 2.

4. Experiments

In this section, we present some experiments on 4 UCI blended datasets to verify whether RMSE-ELM performs better in robustness than other methods such as ELM, OP-ELM, GASEN-ELM, GASEN-BP, and E-GASEN for blended data. At the same time, computational cost is also a significant parameter to evaluate the usefulness of our new framework. All simulations are carried out in Matlab environment running in an Intel Corei5-3470 (3.20 GHz CPU).

Four types of datasets are all selected from the UCI machine learning repository [37]. The first one is Boston Housing dataset which contains 506 samples. Each sample is composed of 13 input variables and 1 output variable. And this dataset is divided into a training set of 400 samples and a testing set of the rest. The second one is Abalone dataset. There are 7 continuous input variables, 1 discrete input variable, and 1 categorical attribute in this dataset. It comprises 4177 samples, among which, 2000 samples are used for training and the rest 2177 samples are used for testing. The third one is Red Wine dataset which contains 1599 samples. Each sample consists of 11 input variables and 1 output variable; the dataset is divided into two sections: 1065 samples for training set and the rest of samples for testing set. Finally, Waveform dataset with more numbers of input variables is selected. This dataset contains 21 input variables and 1 output variable. The specification of the four types of datasets is shown in Table 1.

Firstly, we randomly mix several irrelevant Gaussian noises with the original UCI data, and all features of data are normalized into a similar scale. Secondly, we train the different models such as ELM, OP-ELM, GASEN-ELM, GASEN-BP, E-GASEN, and RMSE-ELM on the training set of blended data. Finally, we test the different models on the testing set of blended data to acquire experimental results including mean square error (MSE), standard deviation (STD), and computational cost (CC). In our experiments, the genetic algorithm employed by RMSE-ELM is implemented by the GAOT toolbox developed by Houck et al. In the toolbox, the genetic operators (selecting, crossover

Given: training set (X, Y) , M (the size of ensemble groups in the first layer), N_1 (the size of each ensemble in the first layer), N_2 (the size of candidates pool in the second layer), ω^* is defined in (7), threshold λ is a pre-set value (reciprocal value of N_1 or N_2).

Steps:

- (1) for $group = 1, \dots, M$
 - { $N_2 = 0$;
 - for $element = 1, \dots, N_1$
 - { Training each ELM network;
 - Generating a population of weight vector;
 - Using selective ensemble to get the best weight vector ω_1^* ;
 - Removing base ELMs that the weights less than $\lambda_1 = 1/N_1$;
 - }
 - Calculating the whole remained ELMs of group i are n_i ;
 - $N_2 = N_2 + n_i$;
- }
- (2) Training N_2 remained ELM;
- (3) Using selective ensemble to get the best weight vector ω_2^* ;
- (4) Removing base ELMs that the weights less than $\lambda_2 = 1/N_2$;
- (5) Getting the final prediction;

ALGORITHM 2: RMSE-ELM.

TABLE 1: Specification of the 2 tested regression data sets.

Task	Number of variables	Number of trainings	Number of tests	Abbr.
Boston housing	13	400	106	BH
Abalone	8	2000	2177	Aba
Red Wine	11	1065	534	RW
Waveform	21	3000	2000	Wav

TABLE 2: MSE for UCI blended datasets (7 irrelevant variables).

Data set	ELM	OP-ELM	GASEN-ELM	GASEN-BP	E-GASEN	RMSE-ELM
BH	5.8564	4.9823	5.0543	4.7869	4.8822	4.7763
Aba	34.5586	31.4742	30.0193	29.5716	28.3969	26.0626
RW	0.4998	0.4946	0.4514	0.5412	0.4488	0.4374
Wav	0.3733	0.3412	0.3429	0.2671	0.3371	0.3276

probability, mutation probability, and stopping criterion) are set to the default values. The first group of original UCI data is blended with 7 irrelevant variables that all conform to the Gaussian distributions, such as $N(0, 2)$, $N(0, 1)$, $N(0, 0.5)$, $N(0, 0.1)$, $N(0, 0.005)$, $N(0, 0.001)$, and $N(0, 0.0005)$. To acquire the convincing result, the second group of original data is blended with 10 irrelevant Gaussian variables, such as $N(0, 2)$, $N(0, 1)$, $N(0, 0.5)$, $N(0, 0.1)$, $N(0, 0.05)$, $N(0, 0.01)$, $N(0, 0.005)$, $N(0, 0.001)$, $N(0, 0.0005)$, and $N(0, 0.0001)$. For different ensemble frameworks (GASEN-ELM, GASEN-BP, E-GASEN, and RMSE-ELM), the number of ELMs in each ensemble group is initially set to 20 [38], so the threshold λ used by selective ensemble is set to 0.05 because it is the reciprocal value of the size of each ensemble according to Zhou's experiment. For hierarchical models such as E-GASEN and RMSE-ELM, the number of ensemble groups is set to 4 according to Zhou's experiments. In addition, the number of hidden units in each ELM is set to 50 because it can acquire the better performance at this point. Specifically

speaking, the testing RMSE curve gradually decreases to a constant value and also the learning time is still less after this point [11]. For each algorithm we perform 5 runs and record the average value of MSE, STD, and CC. The experimental results are shown in Tables 2–7 and Figures 3–4.

There are two important criteria for robustness assessment (MSE and STD). Let us first analyze the MSE among different methods on UCI blended datasets. For the evaluation of MSE, we visualize the experimental results in Tables 2 and 3 into Figure 3. We define the difference of MSE between RMSE-ELM and other methods as MSE comparison. The formula is

MSE comparison

$$= \frac{\text{MSE (other methods)} - \text{MSE (RMSE_ELM)}}{\text{MSE (other methods)}} \quad (29)$$

$$\times 100\%.$$

TABLE 3: MSE for UCI blended datasets (10 irrelevant variables).

Data set	ELM	OP-ELM	GASEN-ELM	GASEN-BP	E-GASEN	RMSE-ELM
BH	6.3748	5.0672	5.7973	4.8495	5.6263	5.4462
Aba	34.7401	29.5260	29.7477	27.6825	27.5196	26.2389
RW	0.5069	0.4969	0.4613	0.5399	0.4512	0.4422
Wav	0.3750	0.3339	0.3489	0.2747	0.3449	0.3347

TABLE 4: STD for UCI blended datasets (7 irrelevant variables).

Data set	ELM	OP-ELM	GASEN-ELM	GASEN-BP	E-GASEN	RMSE-ELM
BH	0.2236	0.1416	0.1024	0.1551	0.0494	0.1109
Aba	3.2644	7.2611	1.3031	1.6831	0.4601	1.3439
RW	0.0191	0.0091	0.0092	0.0270	0.0033	0.0110
Wav	0.0094	0.0187	0.0031	0.0069	0.0020	0.0041

TABLE 5: STD for UCI blended datasets (10 irrelevant variables).

Data set	ELM	OP-ELM	GASEN-ELM	GASEN-BP	E-GASEN	RMSE-ELM
BH	0.1864	0.1807	0.0923	0.1702	0.0400	0.1047
Aba	3.1029	4.3826	1.7374	1.8569	0.4019	1.4385
RW	0.0168	0.0166	0.0086	0.0216	0.0023	0.0085
Wav	0.0107	0.0233	0.0039	0.0098	0.0016	0.0026

TABLE 6: CC for UCI blended datasets (7 irrelevant variables, unit: seconds).

Data set	ELM	OP-ELM	GASEN-ELM	GASEN-BP	E-GASEN	RMSE-ELM
BH	0.0920	234.5413	2.5023	574.1617	4.6832	3.7206
Aba	0.0250	25.7682	1.4180	205.4845	7.6893	2.4960
RW	0.0390	189.7191	1.8720	361.7819	3.0015	2.9203
Wav	0.1427	534.6310	2.8408	1534.0000	4.8984	3.8485

TABLE 7: CC for UCI blended datasets (10 irrelevant variables, unit: seconds).

Data set	ELM	OP-ELM	GASEN-ELM	GASEN-BP	E-GASEN	RMSE-ELM
BH	0.0952	281.5818	2.7363	634.8929	3.8517	3.9226
Aba	0.0250	33.0161	1.4383	229.8675	6.8874	2.7191
RW	0.0406	263.2673	1.7581	431.6392	2.3665	3.0373
Wav	0.1045	559.4664	2.7924	1995.4000	6.2244	3.8454

Therefore, in Figure 3, positive percentage means the MSE of new method (RMSE-ELM) is lower than other methods, which in turn proves that the robustness of new method is better, or vice versa. In four types of UCI blended datasets, the results show that the MSE of our method is lower than that of other methods in most cases. In particular, the difference of MSE between our method and ELM is more obvious, which definitely proves that our framework improves the robustness performance of original ELM for blended data. However, in some cases, the MSE of GASEN-BP and OP-ELM is obviously lower than that of RMSE-ELM.

Secondly, for the evaluation of STD, we visualize the experimental results in Tables 4 and 5 into Figure 4. We

define the difference of STD between RMSE-ELM and other methods as STD comparison. The formula is

STD comparison

$$= \frac{\text{STD (other methods)} - \text{STD (RMSE-ELM)}}{\text{STD (other methods)}} \quad (30)$$

$$\times 100\%.$$

In Figure 4, positive percentage means the STD of our method is lower than that of other methods, which proves that the robustness of our new method is better, or vice versa. In four types of blended datasets, the results show

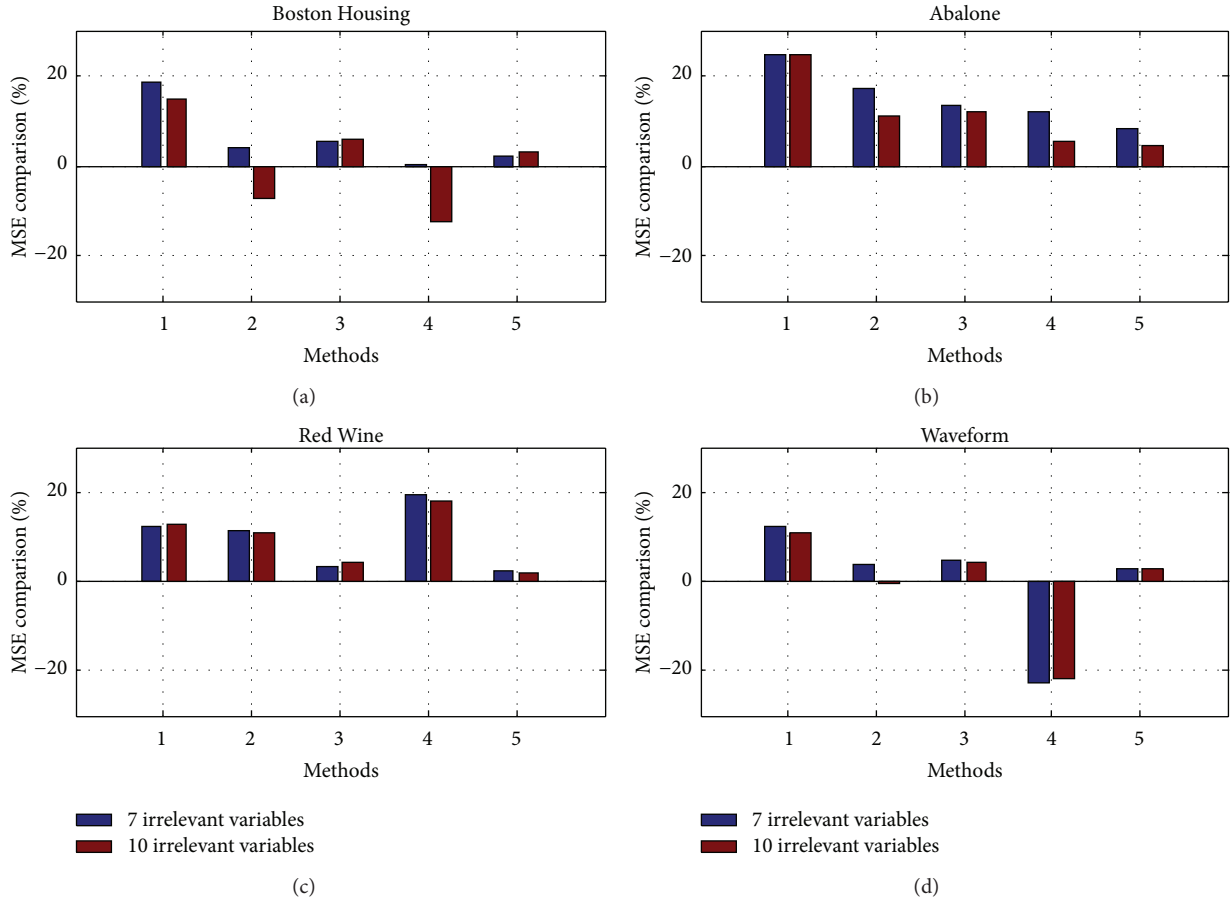


FIGURE 3: MSE comparison between RMSE-ELM and other methods (x-axis 1: ELM, 2: OP-ELM, 3: GASEN-ELM, 4: GASEN-BP, and 5: E-GASEN).

that the STD of our method is lower than that of other methods, which confirms that our framework really improves the robustness performance for blended data. However, in some cases, the STD of E-GASEN is obviously lower than that in RMSE-ELM.

Finally, according to Tables 6 and 7, the results show that the CC of our method is acceptable. However, the CC of GASEN-BP and OP-ELM is too long to apply in the real-time area or industry.

There are two interesting observations above, and we hope to explain further. Firstly, although in some cases the MSE of GASEN-BP and OP-ELM is lower than that of RMSE-ELM, from the view of statistics, the MSE of RMSE-ELM is lower than that of GASEN-BP and OP-ELM on the whole. For example, we have 4 types of UCI datasets and 2 types of Gaussian noisy variants. If we run above 3 algorithms on 8 types of blended data, for MSE comparison between RMSE-ELM and GASEN-BP, the MSE of RMSE-ELM is lower on 5 types of blended data while the MSE of GASEN-BP is lower on 3 types of blended data. For MSE comparison between RMSE-ELM and OP-ELM, the MSE of RMSE-ELM is lower on 6 types of blended data while the OP-ELM is lower on only 2 types of blended data. What is more is that the CC of RMSE-ELM is much shorter than that of OP-ELM and

GASEN-BP. Secondly, in some cases, though the STD of E-GASEN is lower than that of RMSE-ELM, the MSE of RMSE-ELM is totally lower than that of E-GASEN. Moreover, the CC of RMSE-ELM is shorter than that of E-GASEN except RW dataset for 10 irrelevant noisy variables.

In conclusion, we believe that our new method in robustness is definitely better than ELM. We believe that our framework is a good compromise between robustness performance and learning speed. However, how many groups in the first layer of RMSE-ELM should we choose for the best robustness performances? It should be further explored.

5. Discussions

Until now, we are very clear about the structure and performance of RMSE-ELM. In the design of experiments, for added noises, the Gaussian noises are selected because they are common in real world. For comparable methods, we select OP-ELM as one of the benchmark methods because it is almost the first generation of extended ELM to probe the robustness issue. And both the GASEN-ELM and E-GASEN are also selected because they have similar mechanism as RMSE-ELM. However, the differences in structure

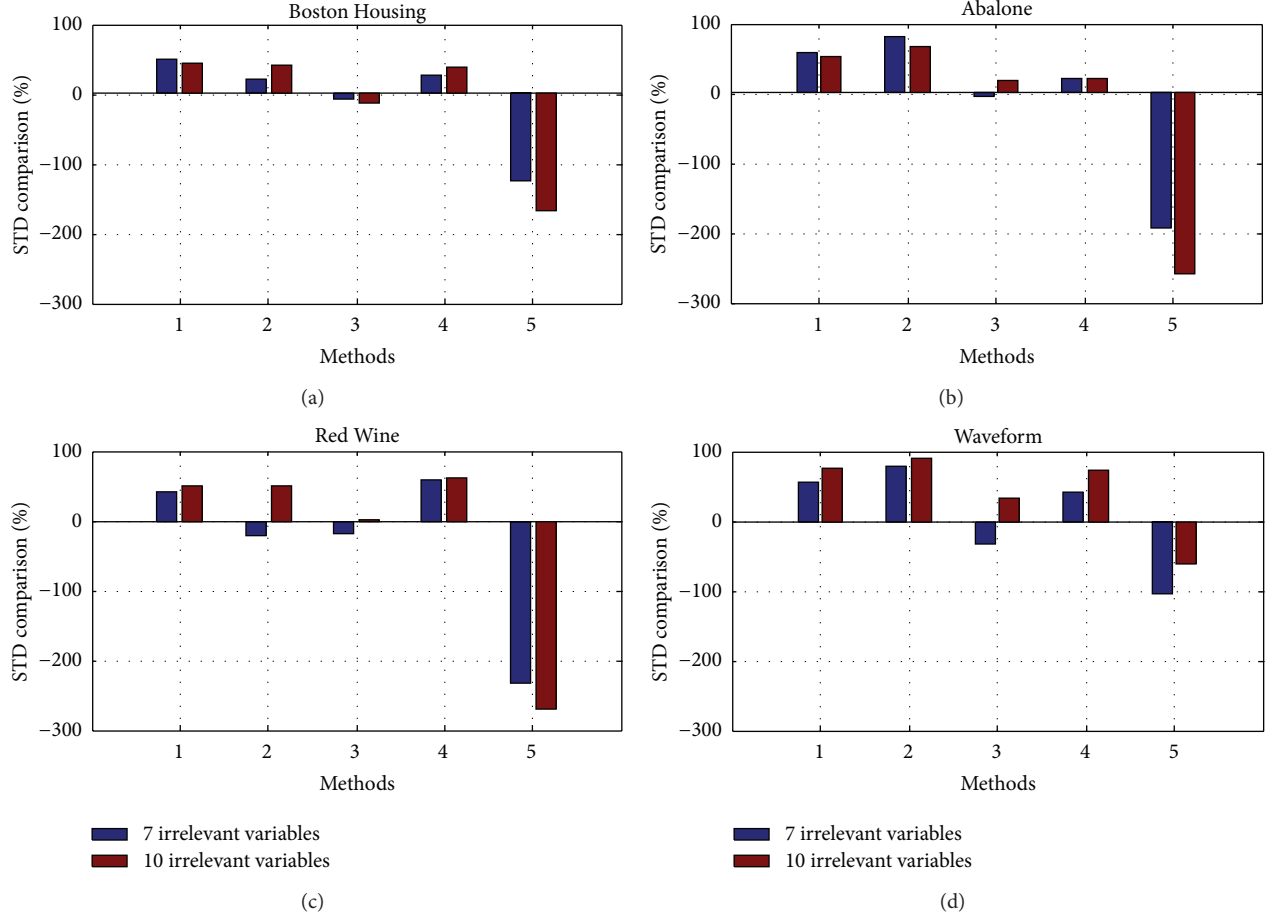


FIGURE 4: STD comparison between RMSE-ELM and other methods (x -axis 1: ELM, 2: OP-ELM, 3: GASEN-ELM, 4: GASEN-BP, and 5: E-GASEN).

and mechanism among them are also obvious. For example, GASEN-ELM is a one-layer ensemble network using selective ensemble approach. Though the E-GASEN is a two-layer ensemble network like RMSE-ELM, the ensemble in the second layer is regarded as the simple ensemble instead of the selective ensemble approach employed by RMSE-ELM. According to the selection of UCI blended data and benchmark approaches, we believe that our experimental results should be fair and convincing.

In the experiments, we tested new method on four types of UCI datasets, which are blended with 7-dimensional and 10-dimensional Gaussian noises separately. It is clear that the MSE of our method is almost lower than that of other methods except for GASEN-BP in some cases. For GASEN-BP and RMSE-ELM, the CC of GASEN-BP limits its wide use in industry and real-time area compared with RMSE-ELM. And also the STD of our method is lower than that of other methods except for E-GASEN. For E-GASEN and RMSE-ELM, though the E-GASEN is lower in STD, which means that E-GASEN is more stable in fluctuation of MSE, in the rest aspects (MSE and CC), the performance of E-GASEN is totally worse than that of RMSE-ELM. In conclusion, the robustness performance of our method is better than that

of other methods for blended data with relatively fast speed. In essence, the ELM has a weak robustness performance for blended data mainly because of its simple structure, so the hierarchical model like recursive model inference is our natural consideration.

6. Conclusions

In this paper, we proposed a new method called RMSE-ELM. To be more specific, the structure of our framework is the two-layer ensemble architecture, which recursively employs selective ensemble to pick out several optimal ELMs from bottom to top for the final ensemble. The experiments prove that the robustness performance of RMSE-ELM is better than original ELM and representative methods for blended data. Through analysis of experiments, the reasons why our approach works are proposed as follows. Firstly, the selective ensemble extracts the optimal subset effectively from each group in the first layer and from candidate pool in the second layer. Secondly, the kernel of our framework is ELM, which has excellent generalization and rapid learning speed. Finally, the recursive model in essence is a special case of hierarchical

network, which is a good compromise between shallow network and deep network. However, analyses presented in this paper are very preliminary. More experiments and principles still need to be completed in order to modify our framework further. Our future work will focus on three main directions. First, in the framework of RMSE-ELM, how many groups in the first layer should we choose to acquire the best robustness? And how many layers can achieve the optimal compromise between robustness and computational cost based on our framework? Second is whether the space complexity of our method can be largely reduced under regularized framework. For example, if the weight of our framework can be sparse enough under regularization, the complexity of our framework might be largely reduced. Third, whether the selective ensemble approach in the top layer can be replaced by other criteria for a better robustness performance. In general, it may be an interesting work to develop a combination of ensemble learning and hierarchical model to enhance the robustness performance of ELM in the future.

Conflict of Interests

The authors declare that there is no conflict of interests regarding the publication of this paper.

Acknowledgment

This work is partially supported by Natural Science Foundation of China (41176076, 31202036, 51379198, and 51075377).

References

- [1] R. Salakhutdinov and G.-E. Hinton, "Deep boltzmann machine," in *Proceedings of the 12th International Conference on Artificial Intelligence and Statistics Proceedings (AISTATS '09)*, vol. 5, pp. 448–455, 2009.
- [2] Y.-N. Chen, C.-C. Han, C.-T. Wang, B.-S. Jeng, and K.-C. Fan, "The application of a convolution neural network on face and license plate detection," in *Proceedings of the 18th International Conference on Pattern Recognition (ICPR '06)*, pp. 552–555, Hong Kong, August 2006.
- [3] G. E. Hinton, S. Osindero, and Y. W. Teh, "A fast learning algorithm for deep belief nets," *Neural Computation*, vol. 18, no. 7, pp. 1527–1554, 2006.
- [4] Y. Bengio, "Learning deep architectures for AI," *Foundations and Trends in Machine Learning*, vol. 2, no. 1, pp. 1–127, 2009.
- [5] G.-B. Huang, Q.-Y. Zhu, and C.-K. Siew, "Extreme learning machine: theory and applications," *Neurocomputing*, vol. 70, no. 1–3, pp. 489–501, 2006.
- [6] G. E. Hinton and R. R. Salakhutdinov, "Reducing the dimensionality of data with neural networks," *Science*, vol. 313, no. 5786, pp. 504–507, 2006.
- [7] R. Salakhutdinov and H. Larochelle, "Efficient learning of deep boltzmann machines," in *Proceedings of the International Conference on Artificial Intelligence and Statistics*, 2010.
- [8] G.-B. Huang, D.-H. Wang, and Y. Lan, "Extreme learning machines: a survey," *International Journal of Machine Learning and Cybernetics*, vol. 2, no. 2, pp. 107–122, 2011.
- [9] G.-B. Huang and C.-K. Siew, "Extreme learning machine: RBF network case," in *Proceedings of the 8th International Conference on Control, Automation, Robotics and Vision (ICARCV '04)*, pp. 1029–1036, December 2004.
- [10] B. Frénay and M. Verleysen, "Parameter-insensitive kernel in extreme learning for non-linear support vector regression," *Neurocomputing*, vol. 74, no. 16, pp. 2526–2531, 2011.
- [11] G.-B. Huang, L. Chen, and C.-K. Siew, "Universal approximation using incremental constructive feedforward networks with random hidden nodes," *IEEE Transactions on Neural Networks*, vol. 17, no. 4, pp. 879–892, 2006.
- [12] C. Schödl, I. Laptev, and B. Caputo, "Recognizing human actions: a local SVM approach," in *Proceedings of the 17th International Conference on Pattern Recognition (ICPR '04)*, vol. 3, pp. 32–36, August 2004.
- [13] D. E. Rumelhart, G. E. Hinton, and R. J. Williams, "Learning representations by back-propagating errors," *Nature*, vol. 323, no. 6088, pp. 533–536, 1986.
- [14] N.-Y. Liang, G.-B. Huang, P. Saratchandran, and N. Sundararajan, "A fast and accurate online sequential learning algorithm for feedforward networks," *IEEE Transactions on Neural Networks*, vol. 17, no. 6, pp. 1411–1423, 2006.
- [15] Y. A. LeCun, L. Bottou, G. B. Orr, and K.-R. Müller, "Efficient backprop," *Lecture Notes in Computer Science*, vol. 1524, pp. 9–50, 1998.
- [16] G.-B. Huang, P. Saratchandran, and N. Sundararajan, "An efficient sequential learning algorithm for growing and pruning RBF (GAP-RBF) networks," *IEEE Transactions on Systems, Man, and Cybernetics, Part B: Cybernetics*, vol. 34, no. 6, pp. 2284–2292, 2004.
- [17] G.-B. Huang, P. Saratchandran, and N. Sundararajan, "A generalized growing and pruning RBF (GGAP-RBF) neural network for function approximation," *IEEE Transactions on Neural Networks*, vol. 16, no. 1, pp. 57–67, 2005.
- [18] G.-B. Huang, D. H. Wang, and Y. Lan, "Extreme learning machines: a survey," *International Journal of Machine Learning and Cybernetics*, vol. 2, no. 2, pp. 107–122, 2011.
- [19] H.-J. Rong, Y.-S. Ong, A.-H. Tan, and Z. Zhu, "A fast pruned-extreme learning machine for classification problem," *Neurocomputing*, vol. 72, no. 1–3, pp. 359–366, 2008.
- [20] Y. Miche, A. Sorjamaa, P. Bas, O. Simula, C. Jutten, and A. Lendasse, "OP-ELM: optimally pruned extreme learning machine," *IEEE Transactions on Neural Networks*, vol. 21, no. 1, pp. 158–162, 2010.
- [21] Y. Miche, A. Sorjamaa, and A. Lendasse, "OP-ELM: theory, experiments and a toolbox," in *Artificial Neural Networks—ICANN 2008*, vol. 5163 of *Lecture Notes in Computer Science*, pp. 145–154, Springer, Berlin, Germany, 2008.
- [22] Y. Miche, P. Bas, C. Jutten, O. Simula, and A. Lendasse, "A methodology for building regression models using extreme learning machine: OP-ELM," in *Proceedings of the 16th European Symposium on Artificial Neural Networks—Advances in Computational Intelligence and Learning (ESANN '08)*, pp. 247–252, April 2008.
- [23] L. K. Hansen and P. Salamon, "Neural network ensembles," *IEEE Transactions on Pattern Analysis and Machine Intelligence*, vol. 12, no. 10, pp. 993–1001, 1990.
- [24] A. Krogh and P. Sollich, *Statistical Mechanics of Ensemble Learning*, The American Physical Society, 1997.
- [25] Z.-L. Sun, T.-M. Choi, K.-F. Au, and Y. Yu, "Sales forecasting using extreme learning machine with applications in fashion

- retailing," *Decision Support Systems*, vol. 46, no. 1, pp. 411–419, 2008.
- [26] Z.-H. Zhou, J.-X. Wu, Y. Jiang, and S.-F. Chen, "Genetic algorithm based selective neural network ensemble," in *Proceedings of the 17th International Joint Conference on Artificial Intelligence (IJCAI '01)*, pp. 797–802, Seattle, Wash, USA, August 2001.
 - [27] Y. Tang and B. Biondi, "Least-squares migration/inversion of blended data," *SEG Technical Program Expanded Abstracts*, vol. 28, no. 1, pp. 2859–2863, 2009.
 - [28] N. Li and Z.-H. Zhou, *Selective Ensemble under Regularization Framework Multiple Classifier Systems*, Springer, 2009.
 - [29] A. Asuncion and D.-J. Newman, "UCI machine learning repository," 2007.
 - [30] G.-B. Huang, Q.-Y. Zhu, and C.-K. Siew, "Extreme learning machine: a new learning scheme of feedforward neural networks," in *Proceedings of the IEEE International Joint Conference on Neural Networks*, vol. 2, pp. 985–990, July 2004.
 - [31] D. Serre, *Matrices: Theory and Applications*, vol. 216 of *Graduate Texts in Mathematics*, Springer, New York, NY, USA, 2002.
 - [32] C.-R. Rao and S.-K. Mitra, *Generalized Inverse of a Matrix and Its Applications*, John Wiley & Sons, New York, NY, USA, 1972.
 - [33] H.-M. Van, Y. Miche, E. Oja et al., "Adaptive ensemble models of extreme learning machines for time series prediction," in *Proceedings of the 19th International Conference on Artificial Neural Networks (ICANN '09)*, vol. 5769 of *Lecture Notes Computing Science*, pp. 305–314, 2009.
 - [34] M. van Heeswijk, Y. Miche, E. Oja, and A. Lendasse, "GPU-accelerated and parallelized ELM ensembles for large-scale regression," *Neurocomputing*, vol. 74, no. 16, pp. 2430–2437, 2011.
 - [35] Z.-H. Zhou, J. Wu, and W. Tang, "Ensembling neural networks: many could be better than all," *Artificial Intelligence*, vol. 137, no. 1-2, pp. 239–263, 2002.
 - [36] L.-J. Zhao, T.-Y. Chai, and D.-C. Yuan, "Selective ensemble extreme learning machine modeling of effluent quality in wastewater treatment plants," *International Journal of Automation and Computing*, vol. 9, no. 6, pp. 627–633, 2012.
 - [37] A. Asuncion and N. David, "UCI machine learning repository," 2007.
 - [38] D. W. Opitz and J. W. Shavlik, "Generating accurate and diverse members of a neural-network ensemble," in *Advances in Neural Information Processing Systems*, pp. 535–541, 1996.

