

Review Article

Current Stem Cell Delivery Methods for Myocardial Repair

Calvin C. Sheng,¹ Li Zhou,¹ and Jijun Hao²

¹ School of Medicine, Vanderbilt University, 2220 Pierce Avenue, Nashville, TN 37232, USA

² College of Veterinary Medicine, Western University of Health Sciences, 309 East Second Street, Pomona, CA 91766, USA

Correspondence should be addressed to Jijun Hao; jhao@westernu.edu

Received 9 August 2012; Accepted 14 September 2012

Academic Editor: Patrick Müller-Best

Copyright © 2013 Calvin C. Sheng et al. This is an open access article distributed under the Creative Commons Attribution License, which permits unrestricted use, distribution, and reproduction in any medium, provided the original work is properly cited.

Heart failure commonly results from an irreparable damage due to cardiovascular diseases (CVDs), the leading cause of morbidity and mortality in the United States. In recent years, the rapid advancements in stem cell research have garnered much praise for paving the way to novel therapies in reversing myocardial injuries. Cell types currently investigated for cellular delivery include embryonic stem cells (ESCs), induced pluripotent stem cells (iPSCs), and adult stem cell lineages such as skeletal myoblasts, bone-marrow-derived stem cells (BMSCs), mesenchymal stem cells (MSCs), and cardiac stem cells (CSCs). To engraft these cells into patients' damaged myocardium, a variety of approaches (intramyocardial, transendocardial, transcatheter, venous, intravenous, intracoronary artery and retrograde venous administrations and bioengineered tissue transplantation) have been developed and explored. In this paper, we will discuss the pros and cons of these delivery modalities, the current state of their therapeutic potentials, and a multifaceted evaluation of their reported clinical feasibility, safety, and efficacy. While the issues of optimal delivery approach, the best progenitor stem cell type, the most effective dose, and timing of administration remain to be addressed, we are highly optimistic that stem cell therapy will provide a clinically viable option for myocardial regeneration.

1. Introduction

Cardiovascular diseases (CVDs) are the number one cause of mortality worldwide, and their prevalence is projected to remain the single leading cause of death [1]. Two major types of CVDs, hypertension and coronary artery disease, can lead to myocardial infarction (MI) characterized by death of cardiomyocytes and eventual heart failure [2]. Despite rapid advancements in pharmacologic and surgical approaches over the last several decades, heart failure still remains one of the significant diseases with unresolved dilemmas. So far, the only definitive treatment for heart failure is heart transplantation, which is precluded from wider application due to the limited availability of donor hearts and complications from immunosuppressive therapies [3]. Therefore, there are great clinical interests to pursue novel treatments for improving heart function.

In recent years, stem-cell-based therapy has attracted much attention as a viable approach to treating heart failure. Increasing studies have indicated that stem-cell-based cardiovascular regeneration has the potential to revolutionize

current treatments for patients with ischemic heart disease [4, 5]. Despite the excitement surrounding stem-cell-based cardiac repair, many challenges still remain, such as validating the efficacy and robustness of various delivery methods. In this paper, we assess the current state of stem cell therapy in clinical application, explore the main strategies of cell delivery, and discuss the future direction of the field.

2. Types of Stem Cells Used in Therapy

Pluripotent stem cells and multipotent/unipotent stem cells have been extensively studied for cardiac repair in experimental models and in clinical trials (Figure 1). Pluripotent stem cells, like embryonic stem (ES) cells and induced pluripotent stem (iPS) cells, are capable of differentiating into all cell types of the body including cardiomyocytes. In contrast, multipotent/unipotent stem cells can only differentiate into a limited number of cell types. In this section, we will briefly summarize and discuss the use of pluripotent and multipotent/unipotent stem cells for cardiac repair.

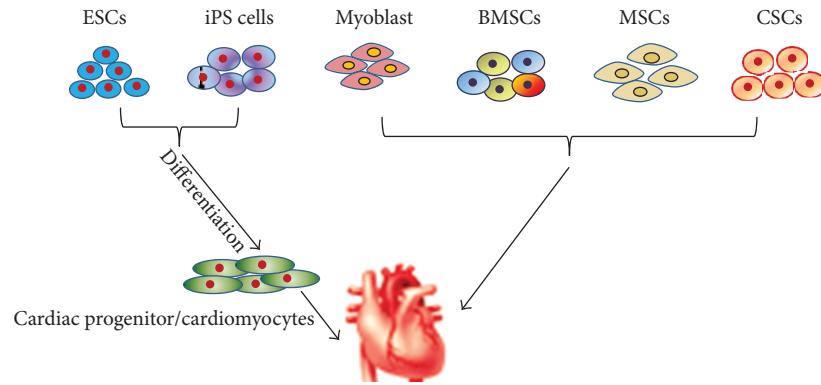


FIGURE 1: Types of stem cells used for cardiac regenerative therapy. Pluripotent stem cells including ESCs and iPS cells are generally differentiated to cardiac progenitor/cardiomyocytes which are then utilized for heart repair. In contrast, multipotent/unipotent stem cells, such as myoblast, BMSCs, MSCs, and CSCs, are generally used to restore heart function directly.

2.1. Pluripotent Stem Cells

2.1.1. ES Cells. ES cells isolated from the inner cell mass of blastocysts are pluripotent and hold great promise as a source of cells for regenerative therapies in treating heart failure. In the past decade, significant progress has been made in efficiently differentiating ES cells into cardiac cells *in vitro* and engrafting the ES cell-derived cardiac cells into injured hearts for *in vivo* repair (review articles [6–8]). For instance, we have developed efficient chemical approaches to induce mouse ES cell cardiomyogenesis by timely modulating the BMP and Wnt/ β -catenin signaling pathways [9, 10]. However, cardiomyogenesis of human ES cells is more challenging. One early study reported that coculturing human ES cells with mouse visceral endoderm-like (END-2) cells induced ventricular-like cardiomyocytes, though inefficiently [6]. Since then, several new methods have endeavored to more effectively promote cardiac formation from human ES cells by stage-specific activation and inhibition of various signaling pathways implicated in cardiac development of the early embryo [11–19]. In animal models, the transplantation of ES cell-derived cardiac cells into ischemic regions has shown improvements in myocardial performance [14, 20–26]. Nevertheless, the future clinical translation of pluripotent human ES cells faces many challenges including a lack of efficient approaches for human ES cell cardiomyogenesis, serious concerns of developing teratomas, immune rejection, and implicated ethical issues.

2.1.2. iPS Cells. The emergence of iPS cell technology has boosted tremendous enthusiasm for regenerative medicine as these cells reprogrammed from a patient's own somatic cells could, in principle, circumvent the ethical concerns and problem of immune rejection associated with human ES cells [27–32]. iPS cells are functionally equivalent to ES cells in their ability to differentiate into all types of body cells including cardiomyocytes. Thus far, a variety of methods have been developed to promote human iPS cell cardiac induction *in vitro* [15, 17, 33, 34]. Recently engrafting iPS cells or iPS cell-derived cardiomyocytes into ischemic hearts

was shown to improve heart performance in animal models [33, 35]. However, clinical applications of iPS cells face several major hurdles such as low cellular reprogramming efficiency, epigenetic memory, oncogenic risks, low efficiency of cardiomyogenesis, and cell line to line variations [28, 29, 33, 36–38].

Recently, several groups have successfully transdifferentiated fibroblasts into cardiomyocytes. Srivastava and colleagues showed that postnatal cardiac or dermal fibroblasts can be switched to cardiomyocyte-like cells with combination of three transcription factors, Gata4, Mef2c, and Tbx5 *in vitro* [39]. The same group has further demonstrated that local delivery of these three transcription factors in murine hearts with coronary ligation can lead to formation of new cardiomyocyte-like cells and a decrease in infarct size [40]. Similarly, Olson's group further validated these reports by showing that fibroblasts can also be trans-differentiated to cardiomyocytes *in vitro* and *in vivo* by adding an additional transcription factor Hand2 to the three previously described [40].

2.2. Multipotent/Unipotent Stem Cells. Multipotent/unipotent stem cells, which are capable of giving rise of multiple or a single cell lineage(s), can be isolated from adult tissues or organs (Figure 1). The most studied multipotent/unipotent stem cells for heart repair are skeletal myoblasts, bone marrow stem cells, mesenchymal stem cells, and residential cardiac stem cells. Over the years, beneficial effects of multipotent stem cells on restoring the damaged heart functions have been extensively evaluated [41–48].

2.2.1. Skeletal Myoblasts (Autologous). Unipotent skeletal myoblasts are precursor cells of human skeletal muscle. These cells normally lie in a quiescent state but can reenter the cell cycle to proliferate and differentiate into functional skeletal muscle in response to injury [49]. The unique features that make skeletal myoblasts suitable for cardiac repair are their autologous origin, high proliferative potential, resistance to ischemia, and low risk of tumorigenesis [50, 51].

In extensive animal studies, skeletal myoblasts have been demonstrated to successfully engraft into the damaged heart areas, prevent left ventricular remodeling, and improve regional and global left ventricular function (review article [4]). These promising animal studies prompted early phase I clinical trials of skeletal myoblasts, which demonstrated the feasibility of surgical and catheter-based grafts [52–55]. While multiple phase I results showed promising results, Menasché and colleagues continued their assessment in a phase II study (NCT00102128) and found that the myoblast autologous grafts failed to significantly improve cardiac function as initially hoped [56]. The efficacy of the transplant seemed to fluctuate depending on graft volumes, which suggests that its viability in the future rests on resolving several key issues such as cell retention and postengraftment cell survival [57].

2.2.2. Bone-Marrow-Derived Stem Cells (Autologous). Bone marrow stem cells (BMSCs) are among the best described multipotent stem cells for transplantation because they are easily accessible, readily propagated in culture, and do not require adjunctive immunosuppressive therapy. A systematic review of 33 randomized clinical trials ($n = 1765$) demonstrated that patients treated with BMSC therapy for acute MI did not demonstrate a statistically significant difference in morbidity or mortality [58]. However, moderate improvement in LVEF was noted in the short term and was maintained between 12 and 61 months [58, 59]. The beneficial effects of BMSCs on heart repair have been hypothesized to be due to paracrine signaling [60, 61], but the exact mechanism by which BMSCs exert their action for cardiac improvement remains to be determined.

Hematopoietic stem cells (HSCs) are one subset of BMSCs that have been shown in the COMPARE-AMI trial to improve LV function, but it is unclear whether this is due to cell differentiation into cardiomyocytes [62–64]. Transplantation of endothelial progenitor cells (EPCs), another subset of BMSCs, has also been shown to improve heart function in a slightly different manner [65, 66]. The EPCs do not differentiate into cardiomyocytes, but their ability to differentiate into endothelial cells leads to improved angiogenesis, thus increasing the delivery of oxygen and nutrients to host cardiomyocytes and endogenous stem cells [67].

2.2.3. Mesenchymal Stem Cells (Autologous). Mesenchymal stem cells (MSCs) are another well-described group of cells used for cardiac transplantation. These cells can be derived from a variety of different tissues like cord blood, BM, and adipose tissue. The MSCs can differentiate into various mesenchymal lineages such as skeletal myoblasts, chondrocytes, adipose tissue, and cardiomyocytes *in vitro* [68–70]. The major advantages of MSC-based cell therapy for cardiac repair lie in their ability to promote growth, survival, or differentiation of other cells in the infarction area by paracrine secretion of cytokines as well as their immunosuppressive effect [71, 72]. However, beneficial effects of MSCs on restoring the damaged heart function are often limited and

transient, and there is still little evidence that adult stem cells can differentiate into myocardial cells [42–45, 47, 73].

2.2.4. Resident Cardiac Stem Cells (Autologous). One of the exciting new developments in the field of cardiac regenerative therapy is the identification of cardiac stem cells (CSCs) and their use in clinical trials [74–77]. These cells express receptor tyrosine kinase c-kit on the surface and are capable of differentiating into three major cardiac lineages (myocytes, endothelial cells, and vascular smooth muscle cells). Recently, two phase I studies (NCT00474461 and NCT00893360) have independently observed promising improvements in ventricular function through intracoronary infusions of CSCs [78, 79]. In the SCIPIO study (NCT00474461), Bolli et al. reported their preliminary findings on patients with postinfarction LVEF <40% before coronary artery bypass grafting (CABG) [78]. The patients receiving the CSC infusion had reduced infarct sizes with improvement in LV systolic function. Similarly, in the CADUCEUS trial, Makkar et al. reported improved regional contractility and reduced postinfarction scar size at six months after cell infusion [79]. While the initial clinical result of CSCs is exciting, caution should be taken as the study is still ongoing, and long-term assessment of larger randomized control trials is still needed.

3. Methods of Stem Cell Delivery

Within the past decade, the potential of stem cell therapy has generated much excitement and led to significant progress in ultimately paving the way to clinical use. Enormous work has gone into identifying and characterizing the best approach to stem cell delivery. In the following, we will discuss the available modalities currently adapted in clinical studies.

3.1. Direct Surgical Intramyocardial (IM) Injection. This epicardial procedure has been the most direct, precise, and accurate approach for injecting stem cells to an infarcted region of the heart. The location can be identified preoperatively using echocardiography and nuclear imaging and, during surgery, by empirical observation [80]. Direct intramyocardial injection can be typically done either during thoracotomies for open-heart surgeries like CABG [81] or as separate procedures performed without cardiac arrest via lateral minithoracotomies [82]. It offers a distinct advantage of targeting localized myocardium without perturbing surrounding tissue and vasculature. Thereby, it circumvents the need to address complex issues such as mobilization and homing of the transplanted cells.

The biggest drawback when comparing with other delivery systems is the invasive nature of the operation. There are greater risks for complications and mortality including potential myocardial perforation at the site of injection, systemic embolization, and cardiac arrhythmias as with all forms of endocardial injection [83]. In a swine study, leakage from the injection site was also observed during and immediately after the procedure, yielding lesser total cell retention when compared with the catheter-based endomyocardial approach which will be described in the following [84]. Recovery

period is also substantially prolonged. For these reasons, it would also not be very feasible for repeated use of this delivery method on the same individual.

Since Hamano et al. described the first successful bone marrow stem cell transplantation during CABG in 2001 [85], 13 additional studies have been evaluated for recovery of cardiac function (Table 1) (reviews articles [86, 87]), and the majority of which showed promising evidence for improvement of the left ventricular function. Contrary to the current indications, results from a recently completed phase III study (NCT00462774) indicate that surgical injection of bone marrow stem cells had no relevant effects on left ventricular function and heart failure symptoms, thereby unraveling nearly 10 years of work since the inception of its own pilot trials [88]. Meanwhile, another phase III trial (NCT00950274) currently underway will serve to either further validate or refute the negative findings of NCT00462774 by also testing the functional benefit of BMSC surgical injections during CABG.

3.2. Catheter-Based Intramyocardial (IM) Administration.

Percutaneous intramyocardial injection is more commonly performed in patients with chronic heart failure secondary to ischemic heart disease to avoid dealing with obstructed coronary arteries all together [106]. There are currently two delivery methods available: (1) transcoronary venous approach and (2) transendocardial approach. Unlike the surgical approach, catheter-based intramyocardial injection can be extended to surgically high-risk patients and be repeated if necessary because of its less invasive nature. One of the main questions currently under investigation is identifying the most effective catheter. There are five of such devices being tested in clinical trials for cell and gene therapies (Helix, MyoCath, Myostar, Stiletto, and TransAccess Delivery System). They differ in specific design aspects and materials used based on the anatomic approach, the first four in a transendocardial manner while the latter via an epicardial transcoronary venous method. In summary, MyoCath and Myostar catheters utilize an integrated system, meaning that the core and support catheters are combined into a single unit, whereas Helix and Stiletto core and support catheters are separate units [107].

In conjunction, another important aspect of catheter-based intramyocardial injections of cells is to optimize an imaging modality, either through two-dimensional (2D) or three-dimensional (3D) imaging. This type of procedure requires extensive imaging guidance within the ventricle to properly position the catheter at the site of injection. No longer limited by a 2D view via X-ray fluoroscopic guidance, the advancements in magnetic resonance imaging (MRI) now permit real-time 3D visualization of the entire procedure and the capability to anatomically distinguish between infarcted and healthy myocardium via contrast-enhanced imaging [108]. Several studies have demonstrated the feasibility of real-time MR-guided intramyocardial injections with the Stiletto system or a modified catheter [109–111].

Alternatively, the NOGA system (Biosense Webster, Diamond Bar, CA, USA) also provides real-time 3D color-coded

endocardial imaging under the guidance of electromechanical mapping (EEM), an electromechanical sensor catheter that detects wall motion and electrical activity. In 1997, Gepstein et al. validated NOGA-based EEM as an accurate navigating system through *in vitro* and *in vivo* studies [112]. The promising animal study has led to numerous clinical pilot studies for cellular [113–115] and gene therapy [116, 117]. As with real-time MRI, this technique detects flux in magnetic fields instead of fluorescence, avoiding the long X-ray exposures, while still adequately identifying infarcted regions of myocardium [118, 119]. However, by comparison, this procedure itself is much lengthier, and the mapping requires extensive technical training.

3.2.1. Transendocardial Injection. With the introduction of new catheters and imaging modalities, physician scientists are now able to implement intramyocardial injections as a potential cellular therapy. The first of the two catheter-based techniques is the transendocardial approach that directly delivers cells through catheter-based EEM. This method was first implemented and validated in a swine model by Fuchs et al. who demonstrated improved cardiac function [120]. Since then, many clinical studies have been published with largely positive indications of efficacy (Table 2) (review articles [54, 87, 103–105]). While EEM is now accepted as an accurate modality for identifying ischemic myocardium [118, 119], the optimal catheter has yet to be determined. Several such as Helix (NCT00507468; NCT01087996) and Myostar (NCT01392625; NCT00790764; NCT01076920) have been integrated with EEM and are currently being tested in clinical trials. Similar to other injection techniques, there is always a low risk for potential wall perforations and ventricular arrhythmia caused by either alterations in the gap junction orientation or release of inflammatory stimuli [121]. Two recent publications within the past year by Trachtenberg et al. (NCT00768066) and Perin et al. (NCT00203203) both reported positive results, with some indication of left ventricular functional improvement using Helix and Myostar, respectively. To date, neither has observed any significant adverse complications. With continuous and rapid advancements in catheterization techniques and imaging devices, transendocardial injection appears to be a very viable, feasible, and safe approach to further investigate in the future, pending the results of current clinical trials.

3.2.2. Transcoronary Venous Injection. The latter of the two catheter-based delivery systems is the transcoronary venous injection. This procedure was first evaluated by Thompson et al. using the TransAccess (TransVascular Inc., Menlo Park, CA) catheter in combination with an intravascular ultrasound (IVUS) imaging and demonstrated in a swine model its feasibility and safety [122]. A few years later, Siminiak et al. conducted the first phase I clinical trial in a small cohort ($n = 10$) yielding hopeful results. They confirmed the feasibility and safety of this procedure in human subjects [55]. Their six-month and twelve-month followups still showed no detectable arrhythmias, an overall improvement in ventricular function based on New York

TABLE 1: Surgical direct myocardial injection studies.

Study	No. of patients	Cell type	No. of cells	Outcome
Hamano et al. (2001) [85]	5/0	ABMMNC	$5 \times 10^7 - 1 \times 10^8$	3/5 showed improvement in coronary perfusion
Patel et al. (2005) [81]	10/10	CD34 + BMC	2.2×10^7	Significant improvement in cardiac function
Gavira et al. (2006) [89]	12/14	SMB	2.21×10^8	Increased global and regional LVEF improvement in viability, and perfusion of cardiac tissue
Mocini et al. (2006) [90]	18/18	ABMMNC	2.92×10^8	Improvement in LVEF and wall motion score index
Klein et al. (2007) [91]	10/0	CD133 + BMC	$1.5 \times 10^6 - 9.7 \times 10^6$	Improvement in LVEF
Ahmadi et al. (2007) [92]	18/9	CD133 + BMC	N/A	Improvement in wall motion score index and perfusion of cardiac tissue
Stamm et al. (2007) [93]	20/20	CD133 + BMC	5×10^6	Improvement in LVEF and perfusion of cardiac tissue
Pompilio et al. (2008) [82]	5/0	CD133 + BMC	$4 \times 10^6 - 12 \times 10^6$	Improvement in perfusion but no significant improvement in LVEF
Zhao et al. (2008) [94]	18/18	ABMMNC	6.59×10^8	Improvement in LVEF, wall motion score index, and perfusion of cardiac tissue
Menasché et al. (2008) [56]	33/34/30	SMB	$4 \times 10^8 / 8 \times 10^8$	No improvement in regional or global LVEF
Akar et al. (2009) [95]	25/25	ABMMNC	1.29×10^9	Improvement in LVEF, perfusion, and contractility
Viswanathan et al. (2010) [96]	15/15	ABMMNC	$3 \times 10^6 - 2.6 \times 10^7$	Improvement in perfusion but no significant improvement in LVEF
Nasseri (2012) [88]	30/30	CD133 + BMC	5.6×10^6	No improvement in LVEF

ABMMNC: autologous bone marrow mononuclear cells; BMC: bone marrow cells; LVEF: left ventricular ejection fraction; SMB: skeletal myoblast.

TABLE 2: Catheter-based transendocardial injection studies.

Study	No. of patients	Cell type	No. of cells	Outcome
Smits et al. (2003) [54]	5/0	SMB	2.96×10^8	Improvement in LVEF
Perin et al. (2004) [97]	11/9	ABMMNC	2×10^6	Improvement in exercise capacity and myocardial perfusion
Fuchs et al. (2006) [98]	27/0	BMC	2.8×10^7	Improvement in perfusion and LVEF
Briguori et al. (2006) [99]	10/0	CD34 + /CD45 + BMC	4.6×10^6	Improvement in myocardial perfusion
de la Fuente et al. (2007) [100]	10/0	ABMMNC	8.6×10^7	Improvement in LVEF
Tse et al. (2007) [101]	9/10/9	BMC	$1 \times 10^6 / 2 \times 10^6$	Improvement in LVEF
Van Ramshorst et al. (2009) [102]	25/25	ABMMNC	1×10^8	Modest improvement in myocardial perfusion
Trachtenberg (2011) [103]	40/20	MSC/BMC	2×10^8	Minor improvement in LVEF
Williams et al. (2011) [104]	8/0	MSC/ABMMNC	7.63×10^8	Improvement in regional contractility
Perin et al. (2012) [105]	61/31	BMC	1×10^8	No improvement in LVEF
Perin et al. (2012) [105]	10/10	ALDH ^{br}	N/A	Improvement in cardiac function and perfusion of cardiac tissue

ABMMNC: autologous bone marrow mononuclear cells; ALDH^{br}: aldehyde dehydrogenase bright cells; BMC: bone marrow cells; LVEF: left ventricular ejection fraction; MSC: mesenchymal stem cells; SMB: skeletal myoblasts.

Heart Association classification, and six of the nine patients with an increase of between 3% to 8% ejection fraction [123]. Until the study is repeated with a larger sample population, it would be currently premature to draw a definitive conclusion regarding the transcatheter venous approach. This method

via the venous system offers an alternative cell therapy for patients with occluded coronary arteries to consider. Some of the current limitations include difficulty delivering cells to the right coronary territory, and the variability in coronary veins from person to person makes the procedure extremely

TABLE 3: Intracoronary artery administration studies.

Study	No. of patients	Cell type	No. of cells	Outcome
Strauer et al. (2002) [102]	20	ABMMNC	2.8×10^7	No significant LVEF improvement versus control
Chen et al. (2004) [135]	69	SMB	6×10^{10}	Improvement in LVEF
Strauer et al. (2005) [136]	36	ABMMNC	9×10^7	Improvement in LVEF
Erbs et al. (2005) [137]	26	CPC	7×10^7	No significant LVEF improvement versus control
Bartunek et al. (2005) [138]	35	CD133 + BMC	1.3×10^7	No significant LVEF improvement versus control
Katritsis et al. (2005) [139]	22	MSC/EPC	3×10^6	No significant LVEF improvement versus control
Ruan et al. (2005) [140]	20	BMC	N/A	Improvement in LVEF
Assmus et al. (2006) [141]	51	ABMMNC	2×10^8	Improvement in LVEF
Meluzin et al. (2006) [142]	66	ABMMNC	1×10^8	Improvement in LVEF
Schächinger et al. (2006) [143]	204	ABMMNC	2.4×10^8	Decreased mortality
Ge et al. (2006) [144]	20	ABMMNC	4×10^7	No significant LVEF improvement versus control
Janssens et al. (2006) [145]	67	ABMMNC	1.7×10^8	No significant LVEF improvement versus control
Lunde et al. (2006) [146]	100	ABMMNC	8.7×10^7	Improvement in LVEF
Meyer et al. (2006) [147]	60	ABMMNC	2.5×10^9	No significant LVEF improvement versus control
Assmus et al. (2006) [141]	47	CPC	2×10^7	No significant LVEF improvement versus control
Schächinger et al. (2006) [143]	204	ABMMNC	2.4×10^8	Improvement in LVEF
Won et al. (2006) [126]	82	CPC	1.4×10^9	No significant LVEF improvement versus control
Li et al. (2007) [146]	70	CPC	7.3×10^7	Improvement in LVEF
Chen et al. (2006) [148]	48	SMB	5×10^6	No significant LVEF improvement versus control
Meluzin et al. (2008) [149]	60	ABMMNC	1×10^8	Improvement in LVEF
Tatsumi et al. (2007) [150]	54	CPC	5×10^9	Improvement in LVEF
Choi et al. (2007) [151]	73	CPC	2×10^9	No significant LVEF improvement versus control
Herbots et al. (2009) [152]	33/34	BMC	N/A	Better recovery of LV function
Beitnes et al. (2009) [153]	50/50	BMC	6.8×10^7	Improvement in exercise tolerance
Plewka et al. (2009) [154]	40/20	BMC	1.44×10^8	Improvement in LV function
Tendera et al. (2009) [155]	80/40	BMC	1.78×10^8	Longer delay between symptoms and revascularization
Strauer et al. (2010) [156]	191/200	BMC	6.6×10^7	Improvement in LV function
Traverse et al. (2010) [157]	30/10	BMC	1×10^8	Favorable effect on LV modeling
Quyumi et al. (2011) [158]	16/15	CD34 + BMC	5, 10, and 15×10^6	Dose dependent LV function improvement

ABMMNC: autologous bone marrow mononuclear cells; BMC: bone marrow cells; CPC: cardiac progenitor cells; EPC: endothelial progenitor cells; LVEF: left ventricular ejection fraction; MSC: mesenchymal stem cells; SMB: skeletal myoblasts; results combined from two reviews.

difficult. In contrast to the transendocardial approach, in which cells are injected perpendicularly into the left ventricular wall, the transcortical venous approach allows parallel cell injection, which may result in greater cell retention.

3.3. Intravenous (IV) Infusion. Intravenous infusion is a selective technique only for treating post-AMI patients, as it is reliant on physiological homing signals to injured myocardium, a condition not present in chronic heart failure. The greatest advantage to this approach is its simplicity and least invasive delivery route, which opens the option of multiple intermittent infusion treatments. Its safety and feasibility have already been confirmed through a swine model study [124] as well as later in a phase I clinical study (NCT00114452) with promising results even during the 12-month followup [125]. There is currently a phase II study underway (NCT00877903) aimed at evaluating the efficacy of infusing *ex vivo* cultured adult human mesenchymal stem cells intravenously after AMI.

While still a relatively new approach, some skeptics are concerned about the low delivery efficiency of ~0% reported by some studies [126–128]. The validity of these conclusions is questionable due to small cohorts ($n \leq 6$) in these studies. But given that it is delivered through systemic circulation, there is an increased likelihood of infused cells becoming trapped in other organs, particularly the lungs, and eliminated by the reticuloendothelial system [129]. Specific cardiac homing and engraftment mechanisms should be better defined in order to obtain more consistent results. Until a larger-scale study like NCT00877903 reassesses the efficacy of intravenous infusion, it is difficult to conclude whether or not this approach will be a viable option, despite being feasible and safe.

3.4. Intracoronary (IC) Artery Administration. Using standard balloon catheters, intracoronary infusion can directly deliver cells into myocardial regions via the coronary artery of interest. This procedure is the most clinically practiced form of cell delivery [106] and especially preferred following acute

myocardial infarction, because it can be done simultaneously during a percutaneous coronary intervention for treating stenotic coronary arteries [130]. Stem cells are infused through the catheter in one of two manners: (1) nonocclusive angioplasty at slow or high flow rates while maintaining coronary flow or (2) stop-flow method by interrupting it with balloon occlusion [80]. The main advantages are its direct infusion into the target area and the resulting homogenous cell engraftment [131].

A inherent disadvantage is that it would be extremely difficult to deliver cells to areas not well perfused, in addition to the selective pressure of engrafted cells having to survive less-than-ideal nutrient-deprived and hypoxic conditions. New devices like the Cricket microinfusion catheters (Mercator, San Leandro, CA) are the first of their kind specifically designed for coronary perivascular delivery of cells, injecting through blood vessel walls into deeper tissue while causing minimal trauma with its microscopic puncture wound [132]. In a recent 2012 phase I study (NCT00677222), allogeneic bone-marrow-derived adherent adult stem cells were adventitiously delivered into patients using Cricket microneedle catheters after AMI. Preliminary data shows improved ventricular function measured via ejection fraction and stroke volume 4 months later [133]. However, its efficacy needs to be fully evaluated in a larger sample size and followed over a longer duration.

There also appears to be a threshold with regards to the size and dose of cells delivered using the intracoronary route before incurring possible embolization in the small coronary arteries and consequent vascular microinfarcts [106, 134]. Nonetheless, the technique has been proven to be relatively feasible and safe over its clinical use in the past decade.

Looking at 30 clinical studies since 2002 (Table 3) (review articles [87, 159]), intracoronary infusion is still shrouded amidst controversy regarding its actual impact on the recovery of cardiac function. For instance, analysis of REPAIR-AMI (NCT00279175) in a 2-year followup shows mixed findings, with statistically nonsignificant difference in left ventricular ejection fraction but with significantly smaller infarct size and improved contractility between the experimental and placebo groups [160]. In the near future, completion of several phase III studies (NCT00765453, NCT101569178, NCT00279175, NCT00747708, and NCT01187654) and a 10-year evaluation after transplantation (NCT00962364) will help to elucidate whether or not intracoronary infusion may be the optimal method of delivery.

3.5. Retrograde Coronary Venous (RCV) Delivery System.

The final type of administration currently available delivers stem cells to the ischemic or infarcted region by advancing a single or double balloon catheter through the coronary sinus. The method is already ubiquitously used during cardiac surgery procedures for perfusing tissue with arterial blood or protective solutions as a prophylactic treatment against iatrogenic myocardial ischemia. It can be adapted as a stand-alone procedure, especially beneficial for patients with coronary artery obstructions and those unsuitable for CABG because the venous system is fully patent. Prior to cell

infusion, a detailed anatomical map can be obtained by a coronary sinus venogram. In a swine model of myocardial injury, Vicario et al. in 2002 [161] and Yokoyama et al. in 2006 [162] both demonstrated that this method does not produce hemodynamical changes and reported observing autologous bone marrow stem cells in the myocardium and enhanced angiogenesis. A follow-up prospective clinical study in patients with chronic refractory angina by Vicario's group further confirmed its feasibility [163]. However, there are similar issues with RCV infusion as transcatheter venous injection, because they both utilize the venous system. While they avoid the arterial coronary obstructions, these procedures with the tortuosity of the venous system are difficult to navigate. As medical technology advances, these challenges can be overcome and results from preliminary studies above have already indicated clinically promising utility, warranting further investigation.

3.6. Engineered Monolayer Tissue Transplantation.

Engineered tissue transplantation is a novel solution to the poor cell engraftment and survival issue that has plagued most of the delivery methods previously discussed. This procedure aims to regenerate injured cardiomyocytes by providing a physical scaffold to enhance adherence. Many studies have been published regarding the efficacy of various biological-scaffolding constructs as an adjunct approach to improving stem cell delivery. In a recent review by Sui et al. in 2011, they reported findings on 5 natural materials (notably gelatin, Matrigel, and collagen) and 7 synthetic materials used for tissue engineering but ultimately concluded that the optimal scaffold has not been discovered [164]. June of this year, Li et al. bioengineered a novel thermosensitive and injectable hydrogel synthesized from four polymers, which they showed to have a >76% efficiency of inducing MSC differentiation into cardiomyocytes [165]. Furthermore, these cardiomyocytes were characterized as not only expressing cardiac markers but also developing calcium channels and gap junctions, suggesting great potential for regeneration of heart tissue in infarcted regions. Put into perspective, the current state of engineering myocardial tissue is still in its infancy, often leaving more questions than answers.

As the stem cell field advances, significant progress has also been made towards generating monolayer sheets of cells. This enables direct tissue transplants, preserving cell-to-cell adhesion within the monolayer of stem cells and minimizes loss of cell during the engraftment process [166]. In 2006, Miyahara et al. conducted one of the initial studies demonstrating this novel method on a mouse myocardial infarction model utilizing mesenchymal stem cells. This was a proof-of-concept, showing that the engrafted sheet onto the ischemic myocardium survived and gradually grew to form a thick stratum that included a mixture of newly formed vessels, undifferentiated cells, and some cardiomyocytes [167]. They showed that the sheet of cells acted through paracrine pathways to trigger angiogenesis, reversed wall thinning in the ischemic region, and improved cardiac function. A similar study by Bel et al. in 2010 investigated the effectiveness of a composite sheet construct of adipose

tissue-derived stem cells and embryonic stem cell-derived cardiac progenitors transplanted into Rhesus monkeys and successfully demonstrated its safety in a mammalian model [166]. The promising results indicated the presence of newly differentiated cardiomyocytes and increased angiogenesis in the infarcted area.

One step further, instead of transplanting a monolayer sheet of stem cells on a scaffold, it should theoretically be possible to graft a monolayer sheet of pure cardiomyocytes derived from induced pluripotent stem cells (iPSCs) or embryonic stem cells (ESCs). In 2007, Caspi et al. reported improved myocardial performance in infarcted rat hearts when human ESC-derived cardiomyocytes were transplanted [168]. The recent advent of iPSC-derived cardiomyocytes provides an autologous source of cells for engraftment. One of the main challenges with this will be to establish a robust protocol for generating a monolayer sheet of cardiomyocytes. To date, the vision of directly grafting a sheet of cardiomyocytes into a patient has not been proven feasible to be piloted in a clinical study due to the possibility of transplant rejection, teratoma formation, and arrhythmias, but the rapid advancements in the field leave much optimism for the future.

4. Comparing Methods of Cell Delivery

To summarize, there are six broad approaches to cell delivery, each with its own unique aspect and subtle pros and cons. We believe that, instead of solely looking at the objective results based on cardiac function, the efficacy of these delivery systems should be evaluated on a case-by-case basis. In the recent decades, there has been an immense push across all fields of medicine towards a personalized medicine end goal. For instance, in a patient with a recent ischemic myocardial injury due to an obstructed coronary artery, intracoronary artery infusion may not be the optimal treatment route to consider, regardless of its reported experimental efficacy. When comparing these approaches to cell delivery, there are several main factors to consider.

One of the fundamental differences among the various stem cell transplantation procedures is the access route, whether it is through direct thoracotomy, coronary arteries, or venous system. While direct myocardial injection has been shown to be effective [169], there is still significant loss of transplanted cells due to myocardial contraction, leakage from the site of needle puncture, and venous washout [170]. Many patients seeking stem cell therapy have been diagnosed with chronic heart failure predominantly resulting from myocardial ischemia [171]. A common cause is coronary artery disease, which makes arterial access more difficult to maneuver. Like previously mentioned, the venous system effectively avoids that problem but at the cost of having to deal with tortuous and complex veins instead. Anatomically, arteries have relatively narrower lumens and transport blood under higher pressure than veins, increasing the difficulty of cell delivery and risk of perforations. One advantage is that arterial transplantation may show better engraftment results, because they are enriched with oxygen and other nutrients and they do not have valves, which may trap a proportion of

the cells. Future investigations will be necessary to evaluate the efficacy differences of these treatment options.

A more subtle distinction is between injection versus infusion. Injection usually refers to a more direct and localized delivery method by instrumental means, but not necessarily combining with anything around it. However, infusion is the addition of a substance into a solution, the bloodstream in the case of stem cell delivery, and interacting with the surrounding. When cells are delivered via infusion, they are more likely to diffuse throughout the entire circulatory system and are dependent on homing signals to target the injured myocardial region. If a better molecular targeting system can be elaborated, then infusions would be more viable than injections since these procedures are easier, safer, and better suited for multiple deliveries. In contrast, injections can be better guided via catheterization and imaging to a localized area of ischemic injury and then subsequently release the cells for engraftment. While the latter shows better improvement in left ventricle function [172], there is more potential for iatrogenic injuries like myocardial perforations and induced arrhythmia.

Finally, in assessing all the available cell delivery methods, we should first consider the procedure from a bird's eye view. In a swine study assessing the efficacy of cell engraftment using surgical, IC, and coronary venous delivery systems, Hou et al. traced radioactively labeled transplanted cells and reported 11, 2.6, and 3.2% of them being retained, respectively [169]. Surgical intramyocardial is the most direct but also the most invasive, making the procedure extremely risky. Catheter-based intramyocardial approaches are feasible but limited by the scope and development of catheter technology and imaging modalities. Certain imaging like utilizing EEM requires extensive training. Intravenous, intracoronary artery, and retrograde coronary venous infusions are all subjected to the disadvantages discussed above. With regards to tissue engineering, the technology is still in its infancy and, while promising, will require much further inquiry to validate its therapeutic clinical potential for myocardial regeneration.

5. Conclusion

In order to better understand the options presently available and ongoing research involved, we have conducted a comprehensive literature review of various cell delivery methods and evaluated them based on published clinical studies. The entire field of stem cell research is only decades old, so as we gain a better grasp of manipulating and utilizing stem cells, stem cell therapy will have tremendous therapeutic potential. Currently, several large yet elusive questions remain to be addressed: (1) optimal delivery approach, (2) best progenitor stem cell type, (3) most effective dose, and (4) timing of administration. Once we are able to resolve these obstacles, we can establish an optimized system for delivering cells with best cell engraftment and survival conditions. Concurrent work must be done using both animal models as well as in clinical trials to validate preliminary results. As many clinical studies show promising evidence and enter phase III trials, this is a particularly exciting time in the field, awaiting

validation on a larger scale and creating the opportunity for stem cell therapy to be a routine procedure in the hospital one day. We strongly believe that, with the current trend and reported progress on cell delivery modalities, stem cell therapy will be a more robust and viable clinical treatment in the near future.

Acknowledgment

This work is supported by the seed fund of College of Veterinary Medicine at Western University of Health Sciences.

References

- [1] V. Fuster and B. B. Kelly, *Epidemiology of Cardiovascular Disease*, 2010.
- [2] V. L. Roger, A. S. Go, D. M. Lloyd-Jones et al., "Heart disease and stroke statistics-2012 update: a report from the American heart association," *Circulation*, vol. 125, no. 1, pp. e2–e220, 2012.
- [3] M. J. Russo, A. Iribarne, R. Easterwood et al., "Post-heart transplant survival is inferior at low-volume centers across all risk strata," *Circulation*, vol. 122, no. 11, supplement 1, pp. S85–S91, 2010.
- [4] J. D. Dowell, M. Rubart, K. B. S. Pasumarthi, M. H. Soonpaa, and L. J. Field, "Myocyte and myogenic stem cell transplantation in the heart," *Cardiovascular Research*, vol. 58, no. 2, pp. 336–350, 2003.
- [5] C. E. Murry, L. J. Field, and P. Menasché, "Cell-based cardiac repair reflections at the 10-year point," *Circulation*, vol. 112, no. 20, pp. 3174–3183, 2005.
- [6] C. Mummery, D. Ward-van Oostwaard, P. Doevendans et al., "Differentiation of human embryonic stem cells to cardiomyocytes: role of coculture with visceral endoderm-like cells," *Circulation*, vol. 107, no. 21, pp. 2733–2740, 2003.
- [7] A. Ao, J. Hao, and C. C. Hong, "Regenerative chemical biology: current challenges and future potential," *Chemistry and Biology*, vol. 18, no. 4, pp. 413–424, 2011.
- [8] P. W. Burridge, G. Keller, J. D. Gold, and J. C. Wu, "Production of de novo cardiomyocytes: human pluripotent stem cell differentiation and direct reprogramming," *Cell Stem Cell*, vol. 10, no. 1, pp. 16–28, 2012.
- [9] J. Hao, M. A. Daleo, C. K. Murphy et al., "Dorsomorphin, a selective small molecule inhibitor of BMP signaling, promotes cardiomyogenesis in embryonic stem cells," *PLoS ONE*, vol. 3, no. 8, Article ID e2904, 2008.
- [10] H. Wang, J. Hao, and C. C. Hong, "Cardiac induction of embryonic stem cells by a small molecule inhibitor of Wnt/ β -catenin signaling," *ACS Chemical Biology*, vol. 6, no. 2, pp. 192–197, 2011.
- [11] D. A. Elliott, S. R. Braam, K. Koutsis et al., "NKX2-5^{eGFP/w} hESCs for isolation of human cardiac progenitors and cardiomyocytes," *Nature Methods*, vol. 8, no. 12, pp. 1037–1043, 2011.
- [12] P. W. Burridge, D. Anderson, H. Priddle et al., "Improved human embryonic stem cell embryoid body homogeneity and cardiomyocyte differentiation from a novel V-96 plate aggregation system highlights interline variability," *Stem Cells*, vol. 25, no. 4, pp. 929–938, 2007.
- [13] L. Yang, M. H. Soonpaa, E. D. Adler et al., "Human cardiovascular progenitor cells develop from a KDR⁺ embryonic-stem-cell-derived population," *Nature*, vol. 453, no. 7194, pp. 524–528, 2008.
- [14] M. A. Laflamme, K. Y. Chen, A. V. Naumova et al., "Cardiomyocytes derived from human embryonic stem cells in pro-survival factors enhance function of infarcted rat hearts," *Nature Biotechnology*, vol. 25, no. 9, pp. 1015–1024, 2007.
- [15] S. J. Kattman, A. D. Witty, M. Gagliardi et al., "Stage-specific optimization of activin/nodal and BMP signaling promotes cardiac differentiation of mouse and human pluripotent stem cell lines," *Cell Stem Cell*, vol. 8, no. 2, pp. 228–240, 2011.
- [16] J. Hudson, D. Titmarsh, A. Hidalgo, E. Wolvetang, and J. Cooper-White, "Primitive cardiac cells from human embryonic stem cells," *Stem Cells and Development*, vol. 21, no. 9, pp. 1513–1523, 2012.
- [17] H. Uosaki, H. Fukushima, A. Takeuchi et al., "Efficient and scalable purification of cardiomyocytes from human embryonic and induced pluripotent stem cells by VCAM1 surface expression," *PLoS ONE*, vol. 6, no. 8, Article ID e23657, 2011.
- [18] E. Willems, S. Spiering, H. Davidovics et al., "Small-Molecule inhibitors of the wnt pathway potently promote cardiomyocytes from human embryonic stem cell-derived mesoderm," *Circulation Research*, vol. 109, no. 4, pp. 360–364, 2011.
- [19] Q. Zhang, J. Jiang, P. Han et al., "Direct differentiation of atrial and ventricular myocytes from human embryonic stem cells by alternating retinoid signals," *Cell Research*, vol. 21, no. 4, pp. 579–587, 2011.
- [20] T. Xue, H. C. Cho, F. G. Akar et al., "Functional integration of electrically active cardiac derivatives from genetically engineered human embryonic stem cells with quiescent recipient ventricular cardiomyocytes: insights into the development of cell-based pacemakers," *Circulation*, vol. 111, no. 1, pp. 11–20, 2005.
- [21] I. Kehat, L. Khimovich, O. Caspi et al., "Electromechanical integration of cardiomyocytes derived from human embryonic stem cells," *Nature Biotechnology*, vol. 22, no. 10, pp. 1282–1289, 2004.
- [22] M. A. Laflamme, J. Gold, C. Xu et al., "Formation of human myocardium in the rat heart from human embryonic stem cells," *American Journal of Pathology*, vol. 167, no. 3, pp. 663–671, 2005.
- [23] J. Leor, S. Gerecht, S. Cohen et al., "Human embryonic stem cell transplantation to repair the infarcted myocardium," *Heart*, vol. 93, no. 10, pp. 1278–1284, 2007.
- [24] L. W. van Laake, R. Passier, J. Monshouwer-Kloots et al., "Human embryonic stem cell-derived cardiomyocytes survive and mature in the mouse heart and transiently improve function after myocardial infarction," *Stem Cell Research*, vol. 1, no. 1, pp. 9–24, 2007.
- [25] W. Dai, L. J. Field, M. Rubart et al., "Survival and maturation of human embryonic stem cell-derived cardiomyocytes in rat hearts," *Journal of Molecular and Cellular Cardiology*, vol. 43, no. 4, pp. 504–516, 2007.
- [26] O. Caspi, I. Huber, I. Kehat et al., "Transplantation of human embryonic stem cell-derived cardiomyocytes improves myocardial performance in infarcted rat hearts," *Journal of the American College of Cardiology*, vol. 50, no. 19, pp. 1884–1893, 2007.
- [27] K. Okita, T. Ichisaka, and S. Yamanaka, "Generation of germline-competent induced pluripotent stem cells," *Nature*, vol. 448, no. 7151, pp. 313–317, 2007.

- [28] K. Okita, M. Nakagawa, H. Hyenjong, T. Ichisaka, and S. Yamanaka, "Generation of mouse induced pluripotent stem cells without viral vectors," *Science*, vol. 322, no. 5903, pp. 949–953, 2008.
- [29] K. Takahashi, K. Tanabe, M. Ohnuki et al., "Induction of pluripotent stem cells from adult human fibroblasts by defined factors," *Cell*, vol. 131, no. 5, pp. 861–872, 2007.
- [30] K. Takahashi and S. Yamanaka, "Induction of pluripotent stem cells from mouse embryonic and adult fibroblast cultures by defined factors," *Cell*, vol. 126, no. 4, pp. 663–676, 2006.
- [31] M. Wernig, A. Meissner, R. Foreman et al., "In vitro reprogramming of fibroblasts into a pluripotent ES-cell-like state," *Nature*, vol. 448, no. 7151, pp. 318–324, 2007.
- [32] J. Yu, M. A. Vodyanik, K. Smuga-Otto et al., "Induced pluripotent stem cell lines derived from human somatic cells," *Science*, vol. 318, no. 5858, pp. 1917–1920, 2007.
- [33] J. Zhang, G. F. Wilson, A. G. Soerens et al., "Functional cardiomyocytes derived from human induced pluripotent stem cells," *Circulation Research*, vol. 104, no. 4, pp. e30–e41, 2009.
- [34] P. W. Burridge, S. Thompson, M. A. Millrod et al., "A universal system for highly efficient cardiac differentiation of human induced pluripotent stem cells that eliminates interline variability," *PLoS ONE*, vol. 6, no. 4, Article ID e18293, 2011.
- [35] T. J. Nelson, A. Martinez-Fernandez, S. Yamada, C. Perez-Terzic, Y. Ikeda, and A. Terzic, "Repair of acute myocardial infarction with induced pluripotent stem cells induced by human stemness factors," *Circulation*, vol. 120, no. 5, pp. 408–416, 2009.
- [36] M. Stadtfeld, M. Nagaya, J. Utikal, G. Weir, and K. Hochedlinger, "Induced pluripotent stem cells generated without viral integration," *Science*, vol. 322, no. 5903, pp. 945–949, 2008.
- [37] Y. Yoshida and S. Yamanaka, "IPS cells: a source of cardiac regeneration," *Journal of Molecular and Cellular Cardiology*, vol. 50, no. 2, pp. 327–332, 2011.
- [38] C. Mauritz, K. Schwanke, M. Reppel et al., "Generation of functional murine cardiac myocytes from induced pluripotent stem cells," *Circulation*, vol. 118, no. 5, pp. 507–517, 2008.
- [39] M. Ieda, J. D. Fu, P. Delgado-Olguin et al., "Direct reprogramming of fibroblasts into functional cardiomyocytes by defined factors," *Cell*, vol. 142, no. 3, pp. 375–386, 2010.
- [40] L. Qian, Y. Huang, C. I. Spencer et al., "In vivo reprogramming of murine cardiac fibroblasts into induced cardiomyocytes," *Nature*, vol. 485, no. 7400, pp. 593–598, 2012.
- [41] C. E. Murry, H. Reinecke, and L. M. Pabon, "Regeneration gaps: observations on stem cells and cardiac repair," *Journal of the American College of Cardiology*, vol. 47, no. 9, pp. 1777–1785, 2006.
- [42] E. M. Hansson, M. E. Lindsay, and K. R. Chien, "Regeneration next: toward heart stem cell therapeutics," *Cell Stem Cell*, vol. 5, no. 4, pp. 364–377, 2009.
- [43] G. V. Silva, S. Litovsky, J. A. R. Assad et al., "Mesenchymal stem cells differentiate into an endothelial phenotype, enhance vascular density, and improve heart function in a canine chronic ischemia model," *Circulation*, vol. 111, no. 2, pp. 150–156, 2005.
- [44] K. C. Wollert, "Cell therapy for acute myocardial infarction," *Current Opinion in Pharmacology*, vol. 8, no. 2, pp. 202–210, 2008.
- [45] M. Gnecci, H. He, O. D. Liang et al., "Paracrine action accounts for marked protection of ischemic heart by Akt-modified mesenchymal stem cells," *Nature Medicine*, vol. 11, no. 4, pp. 367–368, 2005.
- [46] T. Kinnaird, E. S. Burnett, M. Shou et al., "Local delivery of marrow-derived stromal cells augments collateral perfusion through paracrine mechanisms," *Circulation*, vol. 109, no. 12, pp. 1543–1549, 2004.
- [47] R. Uemura, M. Xu, N. Ahmad, and M. Ashraf, "Bone marrow stem cells prevent left ventricular remodeling of ischemic heart through paracrine signaling," *Circulation Research*, vol. 98, no. 11, pp. 1414–1421, 2006.
- [48] G. M. Ellison, B. Nadal-Ginard, and D. Torella, "Optimizing cardiac repair and regeneration through activation of the endogenous cardiac stem cell compartment," *Journal of Cardiovascular Translational Research*. In press.
- [49] D. A. Taylor, B. Z. Atkins, P. Hungspreugs et al., "Regenerating functional myocardium: improved performance after skeletal myoblast transplantation," *Nature Medicine*, vol. 4, no. 8, pp. 929–933, 1998.
- [50] C. A. Goldthwaite Jr., *Mending a Broken Heart: Stem Cells and Cardiac Repair*, 2007.
- [51] P. Menasché, "Skeletal myoblasts as a therapeutic agent," *Progress in Cardiovascular Diseases*, vol. 50, no. 1, pp. 7–17, 2007.
- [52] P. Menasché, A. A. Hagege, M. Scorsin et al., "Myoblast transplantation for heart failure," *The Lancet*, vol. 357, no. 9252, pp. 279–280, 2001.
- [53] F. D. Pagani, H. DerSimonian, A. Zawadzka et al., "Autologous skeletal myoblasts transplanted to ischemia-damaged myocardium in humans: histological analysis of cell survival and differentiation," *Journal of the American College of Cardiology*, vol. 41, no. 5, pp. 879–888, 2003.
- [54] P. C. Smits, R. J. M. Van Geuns, D. Poldermans et al., "Catheter-based intramyocardial injection of autologous skeletal myoblasts as a primary treatment of ischemic heart failure: clinical experience with six-month follow-up," *Journal of the American College of Cardiology*, vol. 42, no. 12, pp. 2063–2069, 2003.
- [55] T. Siminiak, D. Fiszer, O. Jerzykowska et al., "Percutaneous trans-coronary-venous transplantation of autologous skeletal myoblasts in the treatment of post-infarction myocardial contractility impairment: the POZNAN trial," *European Heart Journal*, vol. 26, no. 12, pp. 1188–1195, 2005.
- [56] P. Menasché, O. Alfieri, S. Janssens et al., "The myoblast autologous grafting in ischemic cardiomyopathy (MAGIC) trial: first randomized placebo-controlled study of myoblast transplantation," *Circulation*, vol. 117, no. 9, pp. 1189–1200, 2008.
- [57] K. Tambara, Y. Sakakibara, G. Sakaguchi et al., "Transplanted skeletal myoblasts can fully replace the infarcted myocardium when they survive in the host in large numbers," *Circulation*, vol. 108, no. 10, supplement 1, pp. II259–II263, 2003.
- [58] E. Martin-Rendon, S. Brunskill, C. Dorée et al., "Stem cell treatment for acute myocardial infarction," *Cochrane Database of Systematic Reviews*, no. 4, Article ID CD006536, 2008.
- [59] V. Jeevanantham, M. Butler, A. Saad, A. Abdel-Latif, E. K. Zuba-Surma, and B. Dawn, "Adult bone marrow cell therapy improves survival and induces long-term improvement in cardiac parameters: a systematic review and meta-analysis," *Circulation*, vol. 126, no. 5, pp. 551–568, 2012.
- [60] A. Abdel-Latif, R. Bolli, I. M. Tleyjeh et al., "Adult bone marrow-derived cells for cardiac repair: a systematic review and meta-analysis," *Archives of Internal Medicine*, vol. 167, no. 10, pp. 989–997, 2007.

- [61] S. Erbs, A. Linke, V. Schächinger et al., "Restoration of microvascular function in the infarct-related artery by intracoronary transplantation of bone marrow progenitor cells in patients with acute myocardial infarction: the Doppler substudy of the Reinfusion of Enriched Progenitor Cells and Infarct Remodeling in Acute Myocardial Infarction (REPAIR-AMI) trial," *Circulation*, vol. 116, no. 4, pp. 366–374, 2007.
- [62] S. Mansour, D. C. Roy, V. Bouchard et al., "COMPARE-AMI trial: comparison of intracoronary injection of CD133⁺ bone marrow stem cells to placebo in patients after acute myocardial infarction and left ventricular dysfunction: study rationale and design," *Journal of Cardiovascular Translational Research*, vol. 3, no. 2, pp. 153–159, 2010.
- [63] L. B. Balsam, A. J. Wagers, J. L. Christensen, T. Kofidis, I. L. Weissmann, and R. C. Robbins, "Haematopoietic stem cells adopt mature haematopoietic fates in ischaemic myocardium," *Nature*, vol. 428, no. 6983, pp. 668–673, 2004.
- [64] C. E. Murry, M. H. Soonpaa, H. Reinecke et al., "Haematopoietic stem cells do not transdifferentiate into cardiac myocytes in myocardial infarcts," *Nature*, vol. 428, no. 6983, pp. 664–668, 2004.
- [65] K. Jujo, M. Ii, and D. W. Losordo, "Endothelial progenitor cells in neovascularization of infarcted myocardium," *Journal of Molecular and Cellular Cardiology*, vol. 45, no. 4, pp. 530–544, 2008.
- [66] A. M. Leone, S. Rutella, M. B. Giannico et al., "Effect of intensive vs standard statin therapy on endothelial progenitor cells and left ventricular function in patients with acute myocardial infarction: statins for regeneration after acute myocardial infarction and PCI (STRAP) trial," *International Journal of Cardiology*, vol. 130, no. 3, pp. 457–462, 2008.
- [67] I. Gruh, J. Beilner, U. Blomer et al., "No evidence of transdifferentiation of human endothelial progenitor cells into cardiomyocytes after coculture with neonatal rat cardiomyocytes," *Circulation*, vol. 113, no. 10, pp. 1326–1334, 2006.
- [68] F. P. Barry and J. M. Murphy, "Mesenchymal stem cells: clinical applications and biological characterization," *International Journal of Biochemistry and Cell Biology*, vol. 36, no. 4, pp. 568–584, 2004.
- [69] X. Xu, Z. Xu, Y. Xu, and G. Cui, "Selective down-regulation of extracellular matrix gene expression by bone marrow derived stem cell transplantation into infarcted myocardium," *Circulation Journal*, vol. 69, no. 10, pp. 1275–1283, 2005.
- [70] H. Xu, Y. J. Yang, H. Y. Qian, Y. D. Tang, H. Wang, and Q. Zhang, "Rosuvastatin treatment activates JAK-STAT pathway and increases efficacy of allogeneic mesenchymal stem cell transplantation in infarcted hearts," *Circulation Journal*, vol. 75, no. 6, pp. 1476–1485, 2011.
- [71] A. I. Caplan and J. E. Dennis, "Mesenchymal stem cells as trophic mediators," *Journal of Cellular Biochemistry*, vol. 98, no. 5, pp. 1076–1084, 2006.
- [72] S. Aggarwal and M. F. Pittenger, "Human mesenchymal stem cells modulate allogeneic immune cell responses," *Blood*, vol. 105, no. 4, pp. 1815–1822, 2005.
- [73] L. C. Amado, A. P. Saliaris, K. H. Schuleri et al., "Cardiac repair with intramyocardial injection of allogeneic mesenchymal stem cells after myocardial infarction," *Proceedings of the National Academy of Sciences of the United States of America*, vol. 102, no. 32, pp. 11474–11479, 2005.
- [74] K. V. Dergilev, K. A. Rubina, and E. V. Parfenova, "Resident cardiac stem cells," *Kardiologiia*, vol. 51, no. 4, pp. 84–92, 2011.
- [75] A. Leri, J. Kajstura, and P. Anversa, "Role of cardiac stem cells in cardiac pathophysiology: a paradigm shift in human myocardial biology," *Circulation Research*, vol. 109, no. 8, pp. 941–961, 2011.
- [76] C. Bearzi, A. Leri, F. Lo Monaco et al., "Identification of a coronary vascular progenitor cell in the human heart," *Proceedings of the National Academy of Sciences of the United States of America*, vol. 106, no. 37, pp. 15885–15890, 2009.
- [77] C. Bearzi, M. Rota, T. Hosoda et al., "Human cardiac stem cells," *Proceedings of the National Academy of Sciences of the United States of America*, vol. 104, no. 35, pp. 14068–14073, 2007.
- [78] R. Bolli, A. R. Chugh, D. D'Amario et al., "Cardiac stem cells in patients with ischaemic cardiomyopathy (SCIPIO): initial results of a randomised phase 1 trial," *The Lancet*, vol. 378, no. 9806, pp. 1847–1857, 2011.
- [79] R. R. Makkar, R. R. Smith, K. Cheng et al., "Intracoronary cardiosphere-derived cells for heart regeneration after myocardial infarction (CADUCEUS): a prospective, randomised phase 1 trial," *The Lancet*, vol. 379, no. 9819, pp. 895–904, 2012.
- [80] N. Dib, P. Menasche, J. J. Bartunek et al., "Recommendations for successful training on methods of delivery of biologics for cardiac regeneration: a report of the International Society for Cardiovascular Translational Research," *JACC*, vol. 3, no. 3, pp. 265–275, 2010.
- [81] A. N. Patel, L. Geffner, R. F. Vina et al., "Surgical treatment for congestive heart failure with autologous adult stem cell transplantation: a prospective randomized study," *Journal of Thoracic and Cardiovascular Surgery*, vol. 130, no. 6, pp. 1631–1638, 2005.
- [82] G. Pompilio, G. Steinhoff, A. Liebold et al., "Direct minimally invasive intramyocardial injection of bone marrow-derived AC133⁺ stem cells in patients with refractory ischemia: preliminary results," *Thoracic and Cardiovascular Surgeon*, vol. 56, no. 2, pp. 71–76, 2008.
- [83] A. A. Hagege, J.-P. Marolleau, J.-T. Vilquin et al., "Skeletal myoblast transplantation in ischemic heart failure: long-term follow-up of the first phase I cohort of patients," *Circulation*, vol. 114, no. 1, supplement, pp. I108–I113, 2006.
- [84] P. M. Grossman, Z. Han, M. Palasis, J. J. Barry, and R. J. Lederman, "Incomplete retention after direct myocardial injection," *Catheterization and Cardiovascular Interventions*, vol. 55, no. 3, pp. 392–397, 2002.
- [85] K. Hamano, M. Nishida, K. Hirata et al., "Local implantation of autologous bone marrow cells for therapeutic angiogenesis in patients with ischemic heart disease—clinical trial and preliminary results," *Japanese Circulation Journal*, vol. 65, no. 9, pp. 845–847, 2001.
- [86] P. Donndorf and G. Steinhoff, "Intramyocardial stem cell transplantation in cardiac surgery: from preclinical backgrounds to the PERFECT trial," *European Journal of Cardiovascular Medicine*, vol. 1, no. 3, pp. 28–32, 2011.
- [87] K. H. Wu, Z. C. Han, X. M. Mo, and B. Zhou, "Cell delivery in cardiac regenerative therapy," *Ageing Research Reviews*, vol. 11, no. 1, pp. 32–40, 2011.
- [88] B. A. Nasser, M. Kukucka, M. Dandel, W. Ebell, R. Hetzer, and C. Stamm, "Autologous CD133⁺ bone marrow cells and bypass grafting for regeneration of ischemic myocardium: results of the cardi0133 trial," *Journal of the American College of Cardiology*, vol. 59, no. 13, supplement, article E864, 2012.
- [89] D. Mocini, M. Staibano, L. Mele et al., "Autologous bone marrow mononuclear cell transplantation in patients undergoing coronary artery bypass grafting," *American Heart Journal*, vol. 151, no. 1, pp. 192–197, 2006.

- [90] H. M. Klein, A. Ghodsizad, A. Ruhparwar et al., "Intramyocardial implantation of CD133⁺ stem cells improved cardiac function without bypass surgery," *Heart Surgery Forum*, vol. 10, no. 1, pp. 28–31, 2007.
- [91] H. Ahmadi, H. Baharvand, S. K. Ashtiani et al., "Safety analysis and improved cardiac function following local autologous transplantation of CD133⁺ enriched bone marrow cells after myocardial infarction," *Current Neurovascular Research*, vol. 4, no. 3, pp. 153–160, 2007.
- [92] C. Stamm, H. D. Kleine, Y. H. Choi et al., "Intramyocardial delivery of CD133⁺ bone marrow cells and coronary artery bypass grafting for chronic ischemic heart disease: safety and efficacy studies," *Journal of Thoracic and Cardiovascular Surgery*, vol. 133, no. 3, pp. 717–725.e5, 2007.
- [93] Q. Zhao, Y. Sun, L. Xia, A. Chen, and Z. Wang, "Randomized study of mononuclear bone marrow cell transplantation in patients with coronary surgery," *Annals of Thoracic Surgery*, vol. 86, no. 6, pp. 1833–1840, 2008.
- [94] A. R. Akar, S. Durdu, M. Arat et al., "Five-year follow-up after transepical implantation of autologous bone marrow mononuclear cells to ungraftable coronary territories for patients with ischaemic cardiomyopathy," *European Journal of Cardio-thoracic Surgery*, vol. 36, no. 4, pp. 633–643, 2009.
- [95] C. Viswanathan, Y. Davidson, K. Cooper, S. Tipnis, G. Pujari, and V. M. Kurian, "Transplantation of autologous bone marrow derived mesenchymal stem cells trans-epicardially in patients undergoing coronary bypass surgery," *Indian Heart Journal*, vol. 62, no. 1, pp. 43–48, 2010.
- [96] E. C. Perin, H. F. R. Dohmann, R. Borojevic et al., "Improved exercise capacity and ischemia 6 and 12 months after transendocardial injection of autologous bone marrow mononuclear cells for ischemic cardiomyopathy," *Circulation*, vol. 110, no. 11, supplement 1, pp. II213–II218, 2004.
- [97] S. Fuchs, R. Kornowski, G. Weisz et al., "Safety and feasibility of transendocardial autologous bone marrow cell transplantation in patients with advanced heart disease," *American Journal of Cardiology*, vol. 97, no. 6, pp. 823–829, 2006.
- [98] C. Briguori, B. Reimers, C. Sarais et al., "Direct intramyocardial percutaneous delivery of autologous bone marrow in patients with refractory myocardial angina," *American Heart Journal*, vol. 151, no. 3, pp. 674–680, 2006.
- [99] L. M. de la Fuente, S. H. Stertz, J. Argenti et al., "Transendocardial autologous bone marrow in chronic myocardial infarction using a helical needle catheter: 1-year follow-up in an open-label, nonrandomized, single-center pilot study (the TABMMI study)," *American Heart Journal*, vol. 154, no. 1, pp. 79.e1–79.e7, 2007.
- [100] H. F. Tse, S. Thambar, Y. L. Kwong et al., "Prospective randomized trial of direct endomyocardial implantation of bone marrow cells for treatment of severe coronary artery diseases (PROTECT-CAD trial)," *European Heart Journal*, vol. 28, no. 24, pp. 2998–3005, 2007.
- [101] J. Van Ramshorst, J. J. Bax, S. L. M. A. Beeres et al., "Intramyocardial bone marrow cell injection for chronic myocardial ischemia: a randomized controlled trial," *JAMA*, vol. 301, no. 19, pp. 1997–2004, 2009.
- [102] B. E. Strauer, M. Brehm, T. Zeus et al., "Repair of infarcted myocardium by autologous intracoronary mononuclear bone marrow cell transplantation in humans," *Circulation*, vol. 106, no. 15, pp. 1913–1918, 2002.
- [103] B. Trachtenberg, D. L. Velazquez, A. R. Williams et al., "Rationale and design of the transendocardial injection of autologous human cells (bone marrow or mesenchymal) in chronic ischemic left ventricular dysfunction and heart failure secondary to myocardial infarction (TAC-HFT) trial: a randomized, double-blind, placebo-controlled study of safety and efficacy," *American Heart Journal*, vol. 161, no. 3, pp. 487–493, 2011.
- [104] A. R. Williams, B. Trachtenberg, D. L. Velazquez et al., "Intramyocardial stem cell injection in patients with ischemic cardiomyopathy: functional recovery and reverse remodeling," *Circulation Research*, vol. 108, no. 7, pp. 792–796, 2011.
- [105] E. C. Perin, G. V. Silva, Y. Zheng et al., "Randomized, double-blind pilot study of transendocardial injection of autologous aldehyde dehydrogenase-bright stem cells in patients with ischemic heart failure," *American Heart Journal*, vol. 163, no. 3, pp. 415–421.e1, 2012.
- [106] A. M. Mozid, S. Arnous, E. C. Sammut, and A. Mathur, "Stem cell therapy for heart diseases," *British Medical Bulletin*, vol. 98, no. 1, pp. 143–159, 2011.
- [107] W. Sherman, T. P. Martens, J. F. Viles-Gonzalez, and T. Siminiak, "Catheter-based delivery of cells to the heart," *Nature Clinical Practice Cardiovascular Medicine*, vol. 3, no. 1, pp. S57–S64, 2006.
- [108] R. J. Kim, E. Wu, A. Rafael et al., "The use of contrast-enhanced magnetic resonance imaging to identify reversible myocardial dysfunction," *The New England Journal of Medicine*, vol. 343, no. 20, pp. 1445–1453, 2000.
- [109] R. J. Lederman, M. A. Guttman, D. C. Peters et al., "Catheter-based endomyocardial injection with real-time magnetic resonance imaging," *Circulation*, vol. 105, no. 11, pp. 1282–1284, 2002.
- [110] P. V. Karmarkar, D. L. Kraitchman, I. Izbudak et al., "MR-trackable intramyocardial injection catheter," *Magnetic Resonance in Medicine*, vol. 51, no. 6, pp. 1163–1172, 2004.
- [111] A. J. Dick, M. A. Guttman, V. K. Raman et al., "Magnetic resonance fluoroscopy allows targeted delivery of mesenchymal stem cells to infarct borders in swine," *Circulation*, vol. 108, no. 23, pp. 2899–2904, 2003.
- [112] L. Gepstein, G. Hayam, and S. A. Ben-Haim, "A novel method for nonfluoroscopic catheter-based electroanatomical mapping of the heart: in vitro and in vivo accuracy results," *Circulation*, vol. 95, no. 6, pp. 1611–1622, 1997.
- [113] P. R. Vale, D. W. Losordo, C. E. Milliken et al., "Randomized, single-blind, placebo-controlled pilot study of catheter-based myocardial gene transfer for therapeutic angiogenesis using left ventricular electromechanical mapping in patients with chronic myocardial ischemia," *Circulation*, vol. 103, no. 17, pp. 2138–2143, 2001.
- [114] E. C. Perin, H. F. R. Dohmann, R. Borojevic et al., "Transendocardial, autologous bone marrow cell transplantation for severe, chronic ischemic heart failure," *Circulation*, vol. 107, no. 18, pp. 2294–2302, 2003.
- [115] H. F. Tse, Y. L. Kwong, J. K. F. Chan, G. Lo, C. L. Ho, and C. P. Lau, "Angiogenesis in ischaemic myocardium by intramyocardial autologous bone marrow mononuclear cell implantation," *The Lancet*, vol. 361, no. 9351, pp. 47–49, 2003.
- [116] D. W. Losordo, P. R. Vale, R. C. Hendel et al., "Phase 1/2 placebo-controlled, double-blind, dose-escalating trial of myocardial vascular endothelial growth factor 2 gene transfer by catheter delivery in patients with chronic myocardial ischemia," *Circulation*, vol. 105, no. 17, pp. 2012–2018, 2002.
- [117] J. Kastrup, E. Jørgensen, A. Rück et al., "Direct intramyocardial plasmid vascular endothelial growth factor-A 165 gene therapy

- in patients with stable severe angina pectoris: a randomized double-blind placebo-controlled study: the Euroinject One trial," *Journal of the American College of Cardiology*, vol. 45, no. 7, pp. 982–988, 2005.
- [118] R. Kornowski, M. K. Hong, L. Gepstein et al., "Preliminary animal and clinical experiences using an electromechanical endocardial mapping procedure to distinguish infarcted from healthy myocardium," *Circulation*, vol. 98, no. 11, pp. 1116–1124, 1998.
- [119] E. C. Perin, G. V. Silva, R. Sarmento-Leite et al., "Assessing myocardial viability and infarct transmural extent with left ventricular electromechanical mapping in patients with stable coronary artery disease: validation by delayed-enhancement magnetic resonance imaging," *Circulation*, vol. 106, no. 8, pp. 957–961, 2002.
- [120] A. Sacchetti, R. H. Harris, A. Sharon, I. Shpirer, and G. Cotter, "Transendocardial delivery of autologous bone marrow enhances collateral perfusion and regional function in pigs with chronic experimental myocardial ischemia," *Journal of the American College of Cardiology*, vol. 37, no. 6, pp. 1726–1732, 2001.
- [121] R. M. Klein, E. G. Vester, M. U. Brehm et al., "Inflammation of the myocardium as a trigger for arrhythmias," *Zeitschrift für Kardiologie*, vol. 89, no. 3, pp. III24–III35, 2000.
- [122] C. A. Thompson, B. A. Nasser, J. Makower et al., "Percutaneous transvenous cellular cardiomyoplasty: a novel nonsurgical approach for myocardial cell transplantation," *Journal of the American College of Cardiology*, vol. 41, no. 11, pp. 1964–1971, 2003.
- [123] T. Siminiak, P. Burchardt, and M. Kurpisz, "Postinfarction heart failure: surgical and trans-coronary-venous transplantation of autologous myoblasts," *Nature Clinical Practice Cardiovascular Medicine*, vol. 3, no. 1, pp. S46–S51, 2006.
- [124] M. E. Halkos, Z. Q. Zhao, F. Kerendi et al., "Intravenous infusion of mesenchymal stem cells enhances regional perfusion and improves ventricular function in a porcine model of myocardial infarction," *Basic Research in Cardiology*, vol. 103, no. 6, pp. 525–536, 2008.
- [125] J. M. Hare, J. H. Traverse, T. D. Henry et al., "A randomized, double-blind, placebo-controlled, dose-escalation study of intravenous adult human mesenchymal stem cells (prochymal) after acute myocardial infarction," *Journal of the American College of Cardiology*, vol. 54, no. 24, pp. 2277–2286, 2009.
- [126] J. K. Won, H.-J. Kang, H.-S. Kim, J.-K. Chung, C. L. Myung, and S. L. Dong, "Tissue distribution of ^{18}F -FDG-labeled peripheral hematopoietic stem cells after intracoronary administration in patients with myocardial infarction," *Journal of Nuclear Medicine*, vol. 47, no. 8, pp. 1295–1301, 2006.
- [127] M. Hofmann, K. C. Wollert, G. P. Meyer et al., "Monitoring of bone marrow cell homing into the infarcted human myocardium," *Circulation*, vol. 111, no. 17, pp. 2198–2202, 2005.
- [128] B. B. Chin, Y. Nakamoto, J. W. M. Bulte, M. F. Pittenger, R. Wahl, and D. L. Kraitchman, " ^{111}In oxine labeled mesenchymal stem cell SPECT after intravenous administration in myocardial infarction," *Nuclear Medicine Communications*, vol. 24, no. 11, pp. 1149–1154, 2003.
- [129] I. M. Barbash, P. Chouraqui, J. Baron et al., "Systemic delivery of bone marrow-derived mesenchymal stem cells to the infarcted myocardium: feasibility, cell migration, and body distribution," *Circulation*, vol. 108, no. 7, pp. 863–868, 2003.
- [130] N. Dib, H. Khawaja, S. Varner, M. McCarthy, and A. Campbell, "Cell therapy for cardiovascular disease: a comparison of methods of delivery," *Journal of Cardiovascular Translational Research*, vol. 4, no. 2, pp. 177–181, 2011.
- [131] P. Widimsky, M. Penicka, O. Lang et al., "Intracoronary transplantation of bone marrow stem cells: background, techniques, and limitations," *European Heart Journal, Supplement*, vol. 8, pp. H16–H22, 2006.
- [132] I. B. Copland, "Mesenchymal stromal cells for cardiovascular disease," *Journal of Cardiovascular Disease Research*, vol. 2, no. 1, pp. 3–13, 2011.
- [133] M. S. Penn, S. Ellis, S. Gandhi et al., "Adventitial delivery of an allogeneic bone marrow-derived adherent stem cell in acute myocardial infarction: phase I clinical study," *Circulation Research*, vol. 110, no. 2, pp. 304–311, 2012.
- [134] K. Suzuki, N. J. Brand, R. T. Smolenski, J. Jayakumar, B. Mur-tuza, and M. H. Yacoub, "Development of a novel method for cell transplantation through the coronary artery," *Circulation*, vol. 102, no. 19, pp. III359–III364, 2000.
- [135] S. L. Chen, W. W. Fang, F. Ye et al., "Effect on left ventricular function of intracoronary transplantation of autologous bone marrow mesenchymal stem cell in patients with acute myocardial infarction," *American Journal of Cardiology*, vol. 94, no. 1, pp. 92–95, 2004.
- [136] B. E. Strauer, M. Brehm, T. Zeus et al., "Regeneration of human infarcted heart muscle by intracoronary autologous bone marrow cell transplantation in chronic coronary artery disease: the IACT Study," *Journal of the American College of Cardiology*, vol. 46, no. 9, pp. 1651–1658, 2005.
- [137] S. Erbs, A. Linke, V. Adams et al., "Transplantation of blood-derived progenitor cells after recanalization of chronic coronary artery occlusion: first randomized and placebo-controlled study," *Circulation Research*, vol. 97, no. 8, pp. 756–762, 2005.
- [138] J. Bartunek, M. Vanderheyden, B. Vandekerckhove et al., "Intracoronary injection of CD133-positive enriched bone marrow progenitor cells promotes cardiac recovery after recent myocardial infarction: feasibility and safety," *Circulation*, vol. 112, no. 9, pp. I178–I183, 2005.
- [139] D. G. Katritsis, P. A. Sotiropoulou, E. Karvouni et al., "Transcoronary transplantation of autologous mesenchymal stem cells and endothelial progenitors into infarcted human myocardium," *Catheterization and Cardiovascular Interventions*, vol. 65, no. 3, pp. 321–329, 2005.
- [140] W. Ruan, C.-Z. Pan, G.-Q. Huang, Y.-L. Li, J.-B. Ge, and X.-H. Shu, "Assessment of left ventricular segmental function after autologous bone marrow stem cells transplantation in patients with acute myocardial infarction by tissue tracking and strain imaging," *Chinese Medical Journal*, vol. 118, no. 14, pp. 1175–1181, 2005.
- [141] B. Assmus, J. Honold, V. Schächinger et al., "Transcoronary transplantation of progenitor cells after myocardial infarction," *The New England Journal of Medicine*, vol. 355, no. 12, pp. 1222–1232, 2006.
- [142] J. Meluzín, J. Mayer, L. Groch et al., "Autologous transplantation of mononuclear bone marrow cells in patients with acute myocardial infarction: the effect of the dose of transplanted cells on myocardial function," *American Heart Journal*, vol. 152, no. 5, pp. 975.e9–975.e15, 2006.
- [143] V. Schächinger, S. Erbs, A. Elsässer et al., "Intracoronary bone marrow-derived progenitor cells in acute myocardial infarction," *The New England Journal of Medicine*, vol. 355, no. 12, pp. 1210–1221, 2006.

- [144] J. Ge, Y. Li, J. Qian et al., "Efficacy of emergent transcatheter transplantation of stem cells for treatment of acute myocardial infarction (TCT-STAMI)," *Heart*, vol. 92, no. 12, pp. 1764–1767, 2006.
- [145] S. Janssens, C. Dubois, J. Bogaert et al., "Autologous bone marrow-derived stem-cell transfer in patients with ST-segment elevation myocardial infarction: double-blind, randomised controlled trial," *The Lancet*, vol. 367, no. 9505, pp. 113–121, 2006.
- [146] K. Lunde, S. Solheim, S. Aakhus et al., "Intracoronary injection of mononuclear bone marrow cells in acute myocardial infarction," *The New England Journal of Medicine*, vol. 355, no. 12, pp. 1199–1209, 2006.
- [147] G. P. Meyer, K. C. Wollert, J. Lotz et al., "Intracoronary bone marrow cell transfer after myocardial infarction: eighteen months' follow-up data from the randomized, controlled BOOST (Bone marrow transfer to enhance ST-elevation infarct regeneration) trial," *Circulation*, vol. 113, no. 10, pp. 1287–1294, 2006.
- [148] S. Chen, Z. Liu, N. Tian et al., "Intracoronary transplantation of autologous bone marrow mesenchymal stem cells for ischemic cardiomyopathy due to isolated chronic occluded left anterior descending artery," *Journal of Invasive Cardiology*, vol. 18, no. 11, pp. 552–556, 2006.
- [149] J. Meluzín, S. Janoušek, J. Mayer et al., "Three-, 6-, and 12-month results of autologous transplantation of mononuclear bone marrow cells in patients with acute myocardial infarction," *International Journal of Cardiology*, vol. 128, no. 2, pp. 185–192, 2008.
- [150] T. Tatsumi, E. Ashihara, T. Yasui et al., "Intracoronary transplantation of non-expanded peripheral blood-derived mononuclear cells promotes improvement of cardiac function in patients with acute myocardial infarction," *Circulation Journal*, vol. 71, no. 8, pp. 1199–1207, 2007.
- [151] J. H. Choi, J. Choi, W. S. Lee et al., "Lack of additional benefit of intracoronary transplantation of autologous peripheral blood stem cell in patients with acute myocardial infarction," *Circulation Journal*, vol. 71, no. 4, pp. 486–494, 2007.
- [152] L. Herbots, J. D'Hooge, E. Eroglu et al., "Improved regional function after autologous bone marrow-derived stem cell transfer in patients with acute myocardial infarction: a randomized, double-blind strain rate imaging study," *European Heart Journal*, vol. 30, no. 6, pp. 662–670, 2009.
- [153] J. O. Beitnes, E. Hopp, K. Lunde et al., "Long-term results after intracoronary injection of autologous mononuclear bone marrow cells in acute myocardial infarction: the ASTAMI randomised, controlled study," *Heart*, vol. 95, no. 24, pp. 1983–1989, 2009.
- [154] M. Plewka, M. Krzemińska-Pakuła, P. Lipiec et al., "Effect of intracoronary injection of mononuclear bone marrow stem cells on left ventricular function in patients with acute myocardial infarction," *American Journal of Cardiology*, vol. 104, no. 10, pp. 1336–1342, 2009.
- [155] M. Tendra, W. Wojakowski, W. Ruyłło et al., "Intracoronary infusion of bone marrow-derived selected CD34⁺CXCR4⁺ cells and non-selected mononuclear cells in patients with acute STEMI and reduced left ventricular ejection fraction: results of randomized, multicentre Myocardial Regeneration by Intracoronary Infusion of Selected Population of Stem Cells in Acute Myocardial Infarction (REGENT) Trial," *European Heart Journal*, vol. 30, no. 11, pp. 1313–1321, 2009.
- [156] B. E. Strauer, M. Yousef, and C. M. Schannwell, "The acute and long-term effects of intracoronary Stem cell Transplantation in 191 patients with chronic heart failure: the STAR-heart study," *European Journal of Heart Failure*, vol. 12, no. 7, pp. 721–729, 2010.
- [157] J. H. Traverse, D. H. McKenna, K. Harvey et al., "Results of a phase 1, randomized, double-blind, placebo-controlled trial of bone marrow mononuclear stem cell administration in patients following ST-elevation myocardial infarction," *American Heart Journal*, vol. 160, no. 3, pp. 428–434, 2010.
- [158] A. A. Quyyumi, E. K. Waller, J. Murrow et al., "CD34⁺ cell infusion after ST elevation myocardial infarction is associated with improved perfusion and is dose dependent," *American Heart Journal*, vol. 161, no. 1, pp. 98–105, 2011.
- [159] V. F. M. Segers and R. T. Lee, "Stem-cell therapy for cardiac disease," *Nature*, vol. 451, no. 7181, pp. 937–942, 2008.
- [160] B. Assmus, A. Rolf, S. Erbs et al., "Clinical outcome 2 years after intracoronary administration of bone marrow-derived progenitor cells in acute myocardial infarction," *Circulation*, vol. 3, no. 1, pp. 89–96, 2010.
- [161] J. Vicario, J. Piva, A. Pierini et al., "Transcoronary sinus delivery of autologous bone marrow and angiogenesis in pig models with myocardial injury," *Cardiovascular Radiation Medicine*, vol. 3, no. 2, pp. 91–94, 2002.
- [162] S. I. Yokoyama, N. Fukuda, Y. Li et al., "A strategy of retrograde injection of bone marrow mononuclear cells into the myocardium for the treatment of ischemic heart disease," *Journal of Molecular and Cellular Cardiology*, vol. 40, no. 1, pp. 24–34, 2006.
- [163] J. Vicario, C. Campo, J. Piva et al., "One-year follow-up of transcoronary sinus administration of autologous bone marrow in patients with chronic refractory angina," *Cardiovascular Revascularization Medicine*, vol. 6, no. 3, pp. 99–107, 2005.
- [164] R. Sui, X. Liao, X. Zhou, and Q. Tan, "The current status of engineering myocardial tissue," *Stem Cell Reviews and Reports*, vol. 7, no. 1, pp. 172–180, 2011.
- [165] Z. Li, X. Guo, A. F. Palmer, H. Das, and J. Guan, "High-efficiency matrix modulus-induced cardiac differentiation of human mesenchymal stem cells inside a thermosensitive hydrogel," *Acta Biomaterialia*, vol. 8, no. 10, pp. 3586–3595, 2012.
- [166] A. Bel, V. Planat-Bernard, A. Saito et al., "Composite cell sheets: A further step toward safe and effective myocardial regeneration by cardiac progenitors derived from embryonic stem cells," *Circulation*, vol. 122, no. 11, supplement 1, pp. S118–S123, 2010.
- [167] Y. Miyahara, N. Nagaya, M. Kataoka et al., "Monolayered mesenchymal stem cells repair scarred myocardium after myocardial infarction," *Nature Medicine*, vol. 12, no. 4, pp. 459–465, 2006.
- [168] D. Hou, E. A. S. Youssef, T. J. Brinton et al., "Radiolabeled cell distribution after intramyocardial, intracoronary, and interstitial retrograde coronary venous delivery: implications for current clinical trials," *Circulation*, vol. 112, no. 9, supplement, pp. I150–I156, 2005.
- [169] J. Terrovitis, R. Lautamäki, M. Bonios et al., "Noninvasive quantification and optimization of acute cell retention by in vivo positron emission tomography after intramyocardial cardiac-derived stem cell delivery," *Journal of the American College of Cardiology*, vol. 54, no. 17, pp. 1619–1626, 2009.
- [170] J. He, L. G. Oden, L. A. Bazzano, S. Vupputuri, C. Loria, and P. K. Whelton, "Risk factors for congestive heart failure in US

men and women: NHANES I epidemiologic follow-up study," *Archives of Internal Medicine*, vol. 161, no. 7, pp. 996–1002, 2001.

- [171] E. C. Perin, G. V. Silva, J. A. R. Assad et al., "Comparison of intracoronary and transendocardial delivery of allogeneic mesenchymal cells in a canine model of acute myocardial infarction," *Journal of Molecular and Cellular Cardiology*, vol. 44, no. 3, pp. 486–495, 2008.
- [172] J. J. Gavira, J. Herreros, A. Perez et al., "Autologous skeletal myoblast transplantation in patients with nonacute myocardial infarction: 1-year follow-up," *Journal of Thoracic and Cardiovascular Surgery*, vol. 131, no. 4, pp. 799–804, 2006.



Hindawi

Submit your manuscripts at
<http://www.hindawi.com>

