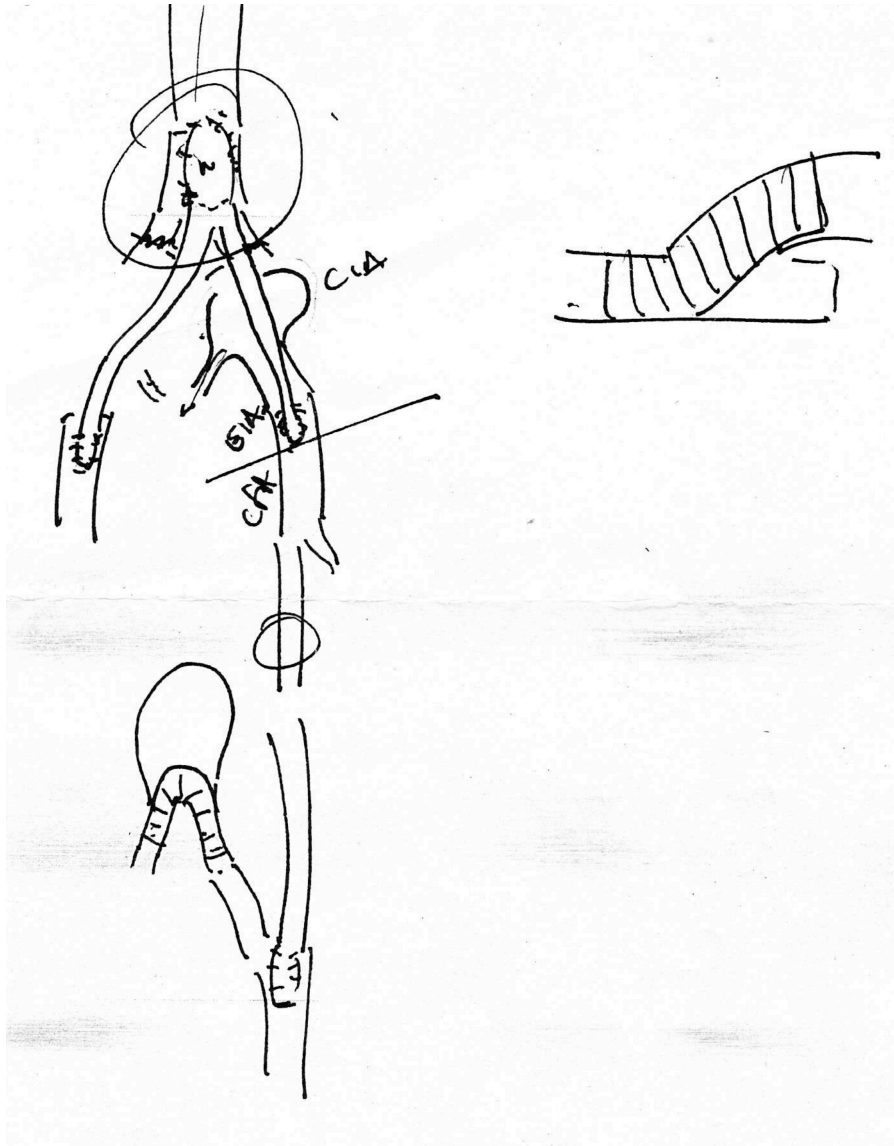


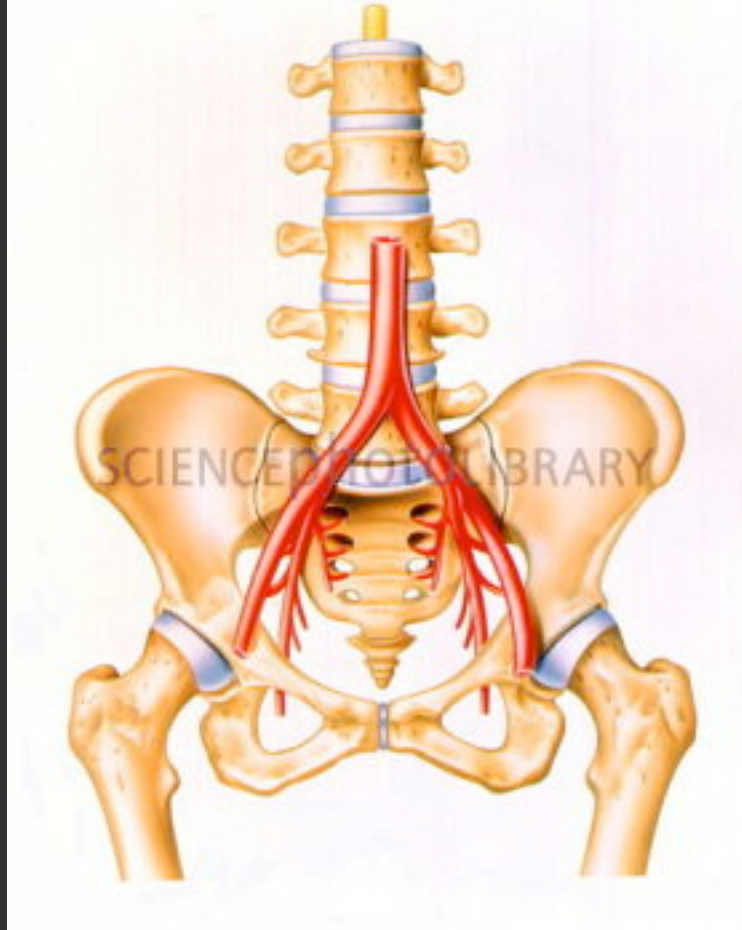
Growing growing stop: selective emphasis in informal clinical drawing encounters

Martha Turland
Faculty of Arts
University of Brighton



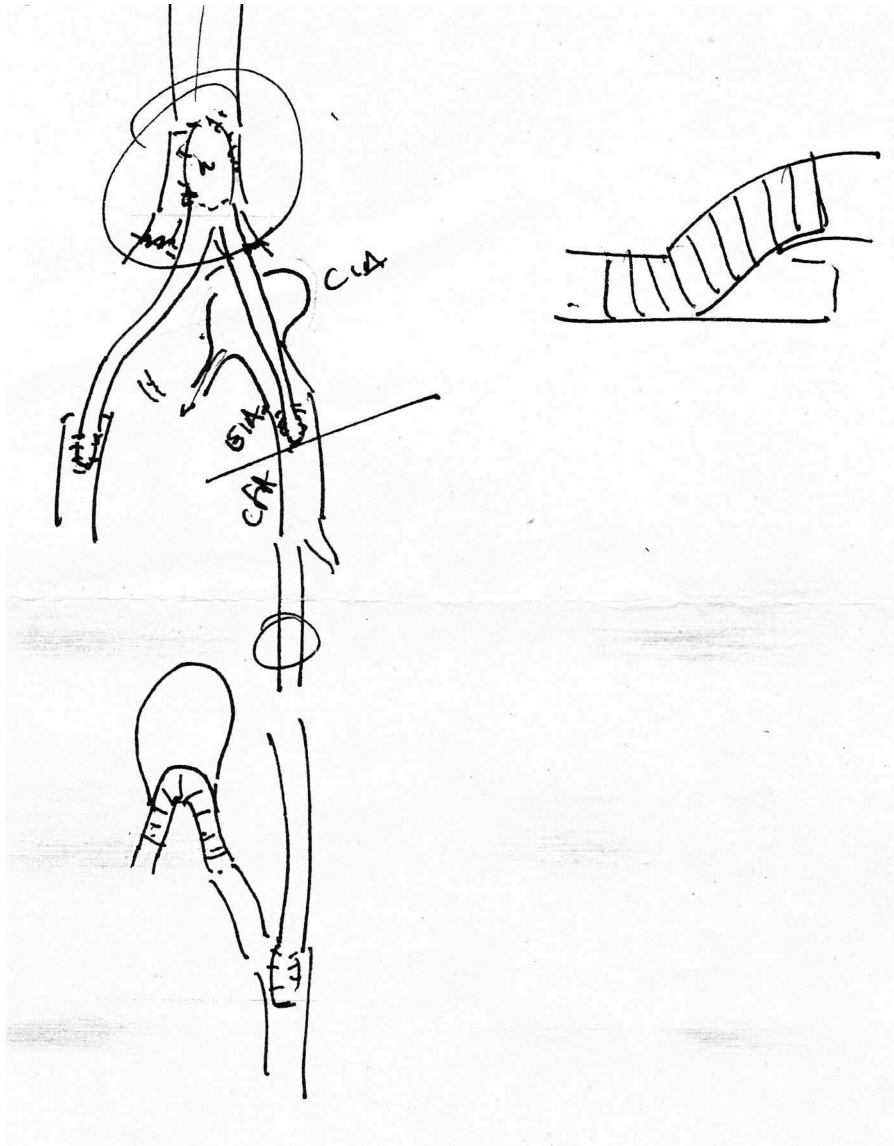
Fernando Vicente, 'Vanitas' series, 2008, 90 x90 cm, acrylic on canvas featured in *Etapes: design visual & culture*, No19 (2010) Front cover. Print





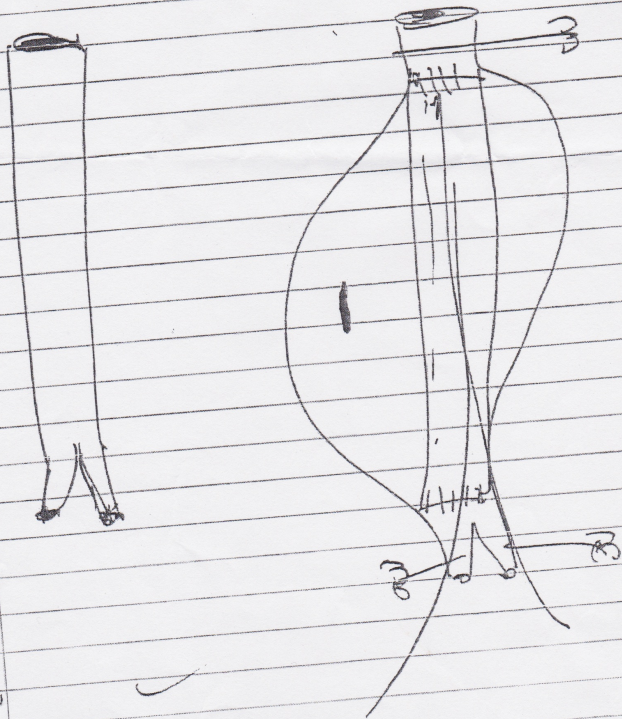
Standard formal medical illustration showing the arterial supply to the pelvis

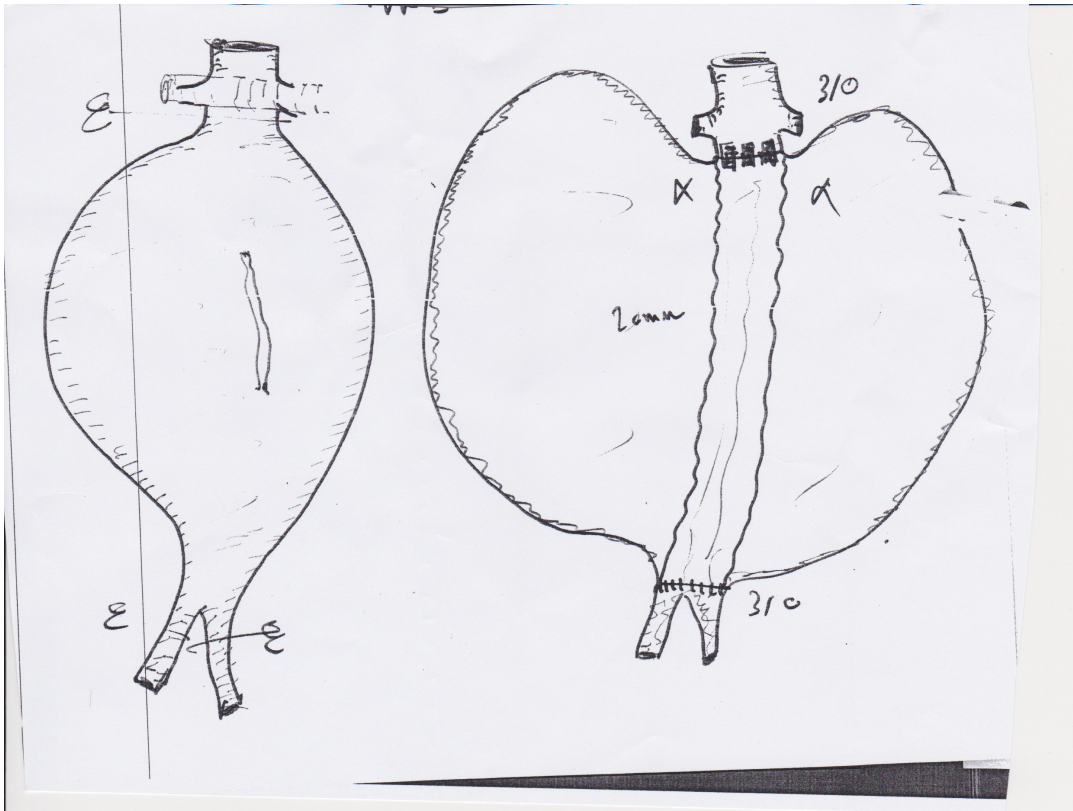
Artwork of blood supply to pelvis
John Bavois/cience photo library.
Web. 3 July 2013

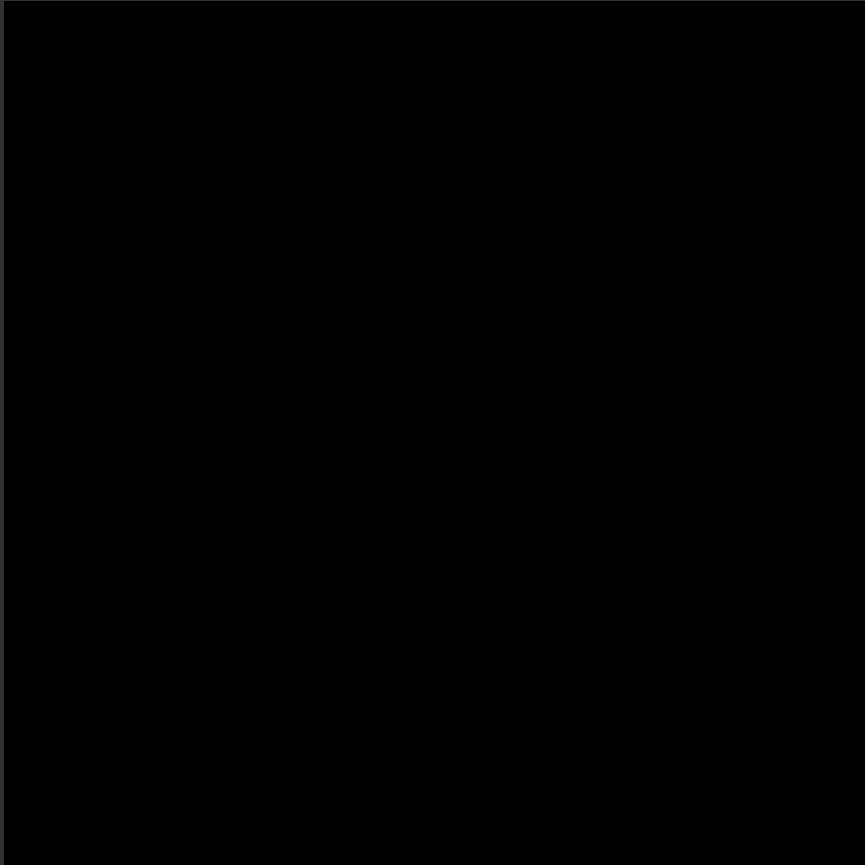


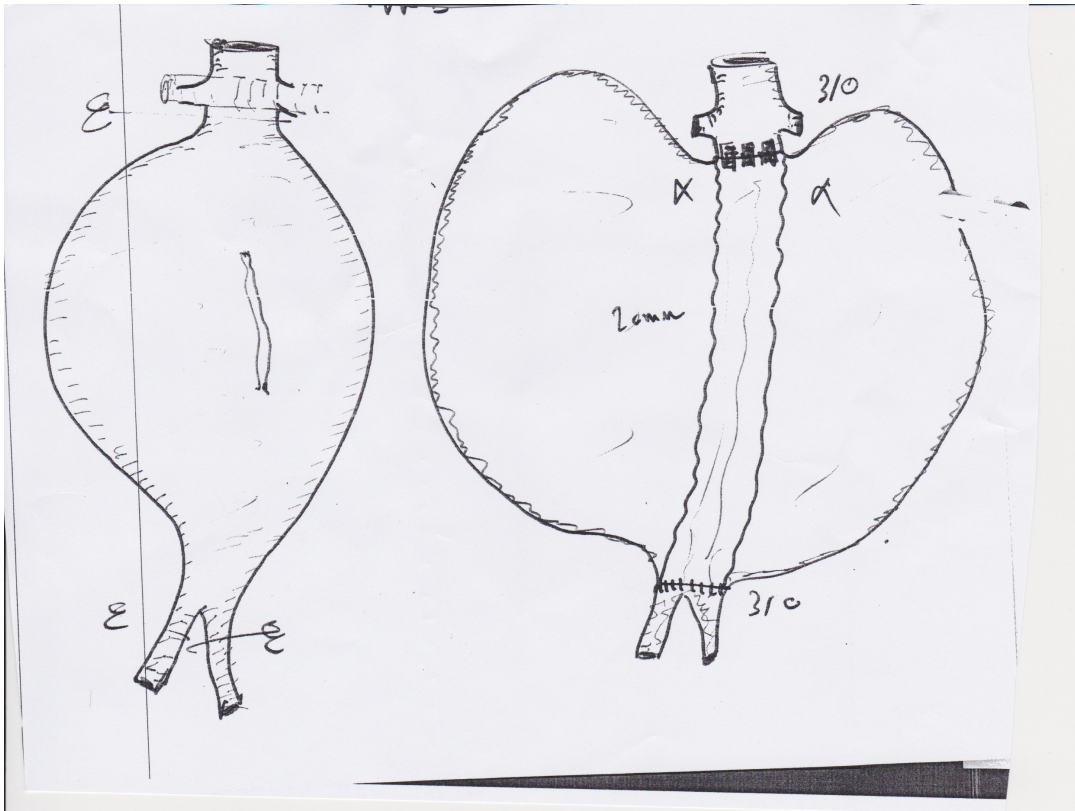
CLINICAL NOTES

DATE

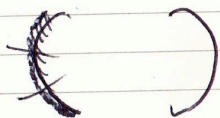








Risser Grade

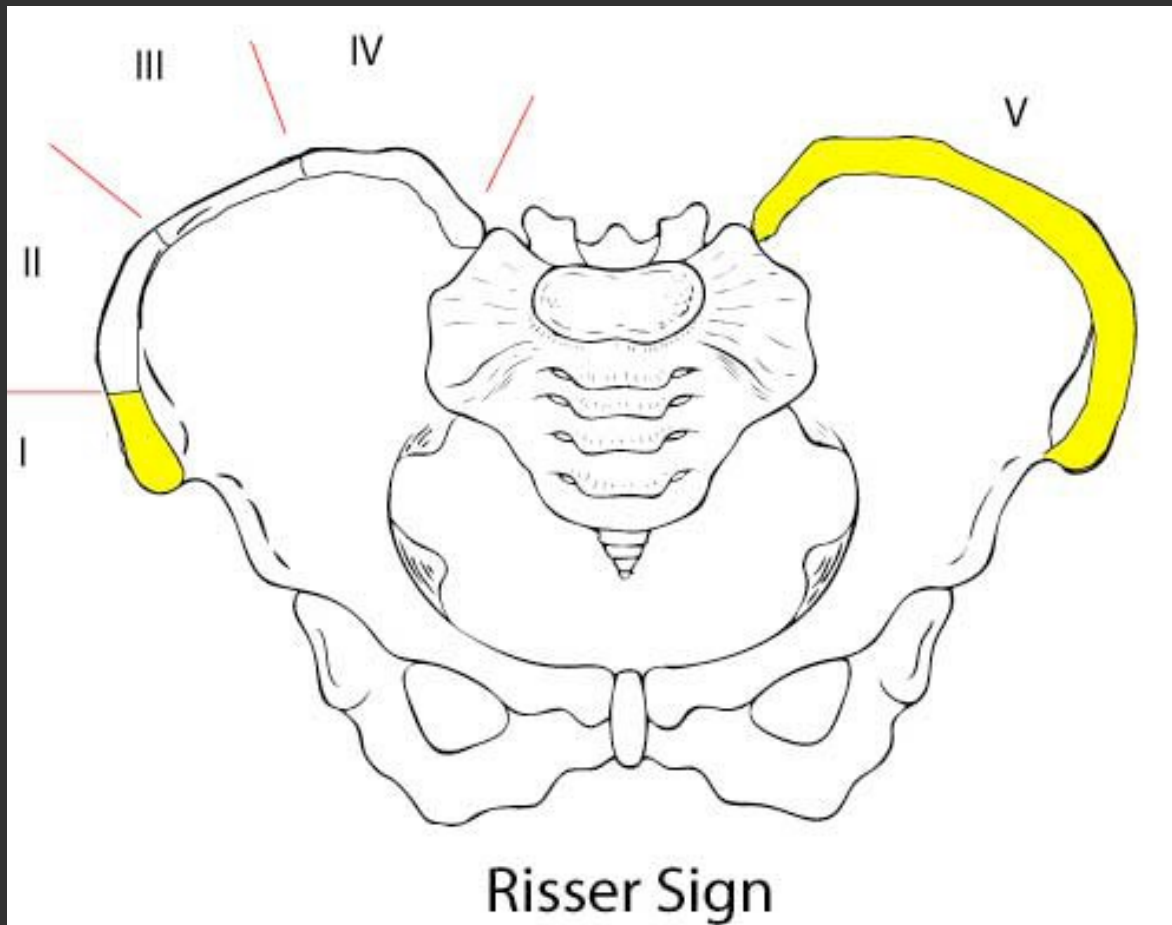


11th Feb '13

[redacted] n/a

Orthopaedic p

[redacted] drew as she explained how we can tell how much 'growing' is due by looking at the pelvis.



Standard formal medical illustration of the pelvis in cross section indicating the amount of skeletal growth left in adolescence

Risser Sign Dept of Orthopaedic surgery University of Stellenbosch, South Africa. Web.21 May 2013

Nisse Guel

11th Feb

[REDACTED]
Royal Mars
Orthopaedic

[REDACTED]

explained
how much
due by 100
advice

Barthes (1978) Rhetoric of the Image from Image Music Text

Sabin (2004) Comics Comix and Graphic Novels

Versaci (2007) this Book Contains Graphic Language: Comics as Literature

Tim Ingold (2011) The Shape of the Earth from Essays in Movement, Knowledge & Description

Haq, Letschka, Ainsworth & Lyon (2011) Craft & Medicine

Angela Rogers PhD UAL (2008) Collaborative Drawing

Bardes, Giller & Herman (2001) Learning to Look: developing clinical observational tools at an art museum

Liz Stokoe's work on conversation analysis, Loughborough University