









Article

Dietary Intake and Food Sources of Niacin, Riboflavin, Thiamin and Vitamin B₆ in a Representative Sample of the Spanish Population. The ANIBES Study [†]

Juan Mielgo-Ayuso ^{1,2} , Raquel Aparicio-Ugarriza ¹, Josune Olza ³ ,
Javier Aranceta-Bartrina ^{4,5}, Ángel Gil ^{3,4} , Rosa M. Ortega ⁶ , Lluís Serra-Majem ^{4,7} ,
Gregorio Varela-Moreiras ^{8,9} and Marcela González-Gross ^{1,4,*} 

¹ ImFINE Research Group, Department of Health and Human Performance, Technical University of Madrid, 28040 Madrid, Spain; juankaya@msn.com (J.M.-A.); apariciougarriza.raquel@gmail.com (R.A.-U.)

² Department of Biochemistry, Molecular Biology and physiology of University of Valladolid, 42003 Soria, Spain

³ Department of Biochemistry and Molecular Biology II, and Institute of Nutrition and Food Sciences, University of Granada, 18100 Granada, Spain; jolza@ugr.es (J.O.); agil@ugr.es (Á.G.)

⁴ CIBEROBN (Physiopathology of Obesity and Nutrition CB12/03/30038), Carlos III Institute (ISCIII), 28029 Madrid, Spain

⁵ Department of Preventive Medicine and Public Health, University of Navarra, C/Irunlarrea 1, 3100 Pamplona, Spain; jaranceta@unav.es

⁶ Department of Nutrition and Food Science, Faculty of Pharmacy, Complutense University of Madrid, Plaza Ramón y Cajal s/n, 28040 Madrid, Spain; rortega@ucm.es

⁷ Research Institute of Biomedical and Health Sciences, University of Las Palmas de Gran Canaria, C/Doctor Pasteur s/n Trasera del Hospital, 35016 Las Palmas, Gran Canaria, Spain; lluis.serra@ulpgc.es

⁸ Department of Pharmaceutical and Health Sciences, Faculty of Pharmacy, CEU San Pablo University, 28668 Madrid, Spain; gvarela@ceu.es

⁹ Spanish Nutrition Foundation (FEN), 28010 Madrid, Spain

* Correspondence: marcela.gonzalez.gross@upm.es; Tel.: +34-913-364-039

[†] ANIBES (Anthropometric data, macronutrients and micronutrients intake, practice of physical activity, socioeconomic data and lifestyles in Spain).

Received: 4 June 2018; Accepted: 26 June 2018; Published: 29 June 2018



Abstract: Thiamin, riboflavin, niacin, and vitamin B₆ are essential micronutrients that are mainly involved in energy metabolism; they may prevent the occurrence of developmental abnormalities and chronic degenerative and neoplastic diseases. The aim was to analyze dietary intake and food sources of those four nutrients in subjects ($n = 2009$) aged 9–75 years old from the Spanish ANIBES (Anthropometric data, macronutrients and micronutrients intake, practice of physical activity, socioeconomic data and lifestyles in Spain) study. Dietary data were collected by means of a validated, photo-based three-day dietary food record. Underreporting was analysed according to the European Food and Safety Authority (EFSA, Parma, Italy) protocol. Mean (max–min) reported intake for the whole population of thiamin was 1.17 ± 0.02 mg/day, (0.30–3.44 mg/day), riboflavin 1.44 ± 0.02 mg/day, (0.37–3.54 mg/day), niacin 29.1 ± 0.2 mg/day (6.7–109 mg/day), and vitamin B₆ 1.54 ± 0.01 mg/day (0.28–9.30 mg/day). The main sources of intake for thiamin, niacin, and vitamin B₆ were meat and meat products, and for riboflavin were milk and dairy products. An elevated percentage of the Spanish ANIBES population meets the EFSA recommended intakes for thiamin (71.2%), riboflavin (72.0%), niacin (99.0%), and vitamin B₆ (77.2%).

Keywords: ANIBES study; b-related vitamins; misreporting; food intake

1. Introduction

In recent years, due to growing evidence that some B vitamins may prevent the occurrence of developmental abnormalities and chronic degenerative and neoplastic diseases, special consideration has been given to the possible use of such indicators as criteria of adequacy [1]. Moreover, the B-complex vitamins are especially important for the energy metabolism. Concretely, thiamin, riboflavin, niacin, and vitamin B₆ are required for decarboxylation, transamination, acylation, oxidation, and reduction of substrates that are ultimately used in energy consumption. One or more of these are also important for amino acids, fatty acids, cholesterol, steroids, and glucose synthesis [2].

In fact, thiamin plays a critical role in the energy metabolism, and, therefore, in the growth, development, and function of cells [3]. Although thiamin deficiency is not usual in developed countries, because it is contained in breads, cereals, pulses, meat, liver, fish, and some fortified foods [4], the existence of thiamin deficiency has been observed in more than half of the elderly people who require nursing care [5,6].

Riboflavin is an essential component of two coenzymes that play major roles in energy production; cellular function, growth, and development; and, metabolism of fats, drugs, and steroids [7,8]. Riboflavin deficiency is extremely rare in developed countries because its sources are commonly consumed foods (milk and milk drinks, bread and bread products, mixed foods whose main ingredient is meat, ready-to-eat cereals, and mixed foods whose main ingredient is grain) [7,8]. However, adolescents are at a high risk for nutritional deficiencies because of their notoriously poor dietary habits, and the estimation of riboflavin deficiency may be an indicator of the overall nutritional status [9].

The function of niacin in the human body is the precursor of the nicotinamide nucleotide coenzymes NAD and NADP. NAD is essential for energy-producing reactions and NADP for anabolic reactions. Moreover, NAD also participates in unique non-redox adenosine diphosphate–ribose transfer reactions that are involved in protein modification, calcium mobilization, cell signaling, and DNA repair [10,11]. Although good sources of niacin are liver, meat and meat products, fish, peanuts, and whole grains [12], deficiency in niacin intake has been observed in European preschoolers [13].

Finally, vitamin B₆ in coenzyme form performs a wide variety of functions in the body and it is extremely versatile, with involvement in more than 100 enzyme reactions, which are mostly concerned with protein metabolism [7,14]. Vitamin B₆ is found in a wide variety of foods. The richest sources of vitamin B₆ include fish, beef liver and other organ meats, potatoes and other starchy vegetables, and fruit (other than citrus). About 75% of vitamin B₆ from a mixed diet is bioavailable [7,14]. Although vitamin B₆ deficiency is uncommon, the prevalence of B₆ deficiency in young adult non-pregnant women (19–35 years) has been described in 1.5% and that of suboptimal B₆ status in 10.9% [15].

Studying the nutritional situation of the population as well as lifestyle habits is fundamental to design national guidelines and public policies to prevent diseases. The role of diet in the decreasing progression of chronic disease is becoming increasingly important [16]. Likewise, maintaining inadequate intake for a long time could be reflected on blood concentration and this fact could have negative effects on health [17]. European Food and Safety Authority (EFSA) has published the “Guidance on the EU Menu methodology”, which facilitates the collection of more consistent food consumption data from all European Union (EU) Member States [18] and the present study is based on these guidelines. In this line, given that the data collected in the surveys are mostly based on subjects self-reporting, the surveys frequently report data that do not represent the habitual intake of the studied population and estimated energy intakes (EIs) that are not plausible physiologically [19]. On this point, EFSA has also published a protocol to identify misreporting [20]. Although previous papers have reported intake of energy [21], macronutrients [22], and some micronutrients [23–25] in a Spanish representative sample, as part of the ANIBES study (Anthropometric data, macronutrients and micronutrients intake, practice of physical activity, socioeconomic data and lifestyles in Spain), there is still a lack of knowledge about the intake of some vitamins involved in the energy metabolism.

Therefore, in the present paper, we analyze the reported intake of niacin, riboflavin, thiamin and vitamin B₆ in the whole population, and in the plausible energy reporters separately (following the EFSA harmonized approach to identify misreporting), and assess the food that contains them.

2. Materials and Methods

ANIBES is a Spanish study that evaluates energy intake and expenditure, dietary patterns and sources, and body composition in a Spanish representative sample [26].

2.1. Sample and Design

ANIBES was designed as a cross-sectional study through a stratified multistage sampling. The study was conducted from mid-September 2013 to mid-November 2013 and two previous pilot studies were also performed. For more coverage and representativeness, 128 sampling points across Spain were considered to guarantee better coverage and representativeness (with 90 interviewers allocated in 11 areas and 12 coordinators, all being previously trained by the Spanish Nutrition Foundation (FEN)). No previous pre-recruitment was considered, which minimized the risk of bias in responses. ANIBES Study's sample was obtained based on 2012 census data published by the INE (Instituto Nacional de Estadística/Spanish Bureau of Statistics, Madrid, Spain) for gender, age, habitat size, and region [26]. For to define that the sample size was representative of all individuals living in Spain (excluding the autonomous cities of Melilla and Ceuta), the ANIBES study aims people aged 9–75 years and residing in cities of at least 2000 residents. The initial number of participants recruited for the ANIBES study was 2914. However, 2634 (90.3%) recorded at least three days of intakes and responded to the interview on the second visit. Nevertheless, once all of the monitoring and cleaning procedures were applied, the number of valid participants was 2285 (78.4% of the initial sample). Concretely, the final sample comprised 2009 people aged 9–75 years (1013 men, 50.4%; 996 women, 49.6%) (2.23% error and 95.5% confidence interval) [26]. In addition, for the youngest groups (9–12, 13–17, and 18–24 years old), and oldest (65–75 years) a boost was considered in order to have at least an $n = 200$ per age group (error $\pm 6.9\%$). Therefore, the random sample plus booster was 2285 participants [26].

Subjects excluded in the study were: individuals living in an institutional setting; individuals following a therapeutic diet due to recent surgery or determined pathologies; potential participants with any transitory illness at the time fieldwork was undertaken; and, individuals employed in areas related to consumer science, marketing, or the media. Likewise, individuals under the following conditions were considered to be eligible for inclusion: those following dietary protocols, such as for the prevention of hypertension, diabetes, hypercholesterolemia, or hyperuricemia; pregnant and lactating females; individuals with diagnosed allergies and/or food intolerance; or, those with metabolic disease, for instance, hyperthyroidism, or hypothyroidism. The sample quotas according to the following variables were age groups: 9 to 12 (children), 13 to 17 (adolescents), 18 to 64 (adults), and 65 to 75 (elderly); sex (men/women); geographical distribution (North-East, Levant, South, West, North-Central, Barcelona, Madrid, Balearic, and Canary Islands); habitat size: 2000 to 30,000 inhabitants (rural population); 30,000 to 200,000 inhabitants (semi-urban population); and, over 200,000 inhabitants (city/town population). Additionally, other factors for sample adjustment were considered: rate of unemployment, percentage of foreigners (immigrant population), level of physical activity, and education/economical level [26].

The final protocol was approved by the Ethical Committee for Clinical Research of the Region of Madrid (Spain).

2.2. Food Record and Adequacy of Reported Intake

Participants were provided with a tablet device (Samsung Galaxy Tab 2 7.0, Samsung Electronics, Suwon, Korea). They were also trained to record all information related to food and drink, before beginning to eat and drink, again after finishing for two weekdays and one weekend day. In addition,

they were asked to record a brief description of foods, recipes, brands, and other relevant information on the tablet. In the same way, participants also recorded the brands and doses of the dietary supplements. Participants who showed problems with using the tablet device were offered other options, such as the use of a digital camera, a paper record, or telephone interviews. In this sense, 79% of the sample used a tablet, 12% a digital camera, and 9% a telephone interview. Food records were coded by trained coders and supervised by dietician-nutritionists. An ad hoc central server software/database was developed for this purpose to work in parallel with the coding and verification processes [26]. Energy and nutrient reported intakes were calculated from food consumption records using VD-FEN 2.1 software (FEN, Madrid, Spain), which is a Dietary Evaluation Program from the Spanish Nutrition Foundation. The program was developed by the FEN for the ANIBES study from Spanish food composition tables [27]. Data was obtained from food manufacturers and nutritional information provided on food labels was also included. A food photographic atlas was used to assist in assigning weights to portion sizes. Reported intake data was compared with European daily recommendations of niacin [12], riboflavin [8], thiamin [4], and vitamin B₆ [14]. The disparity between reported consumption and the level needed for adequacy was calculated when comparing with 80% of EFSA population reference intake (PRI) or adequate intake (AI), according to Moreiras et al. [27] and used in other works related to vitamins and minerals in the Spanish population [23–25,28].

2.3. Evaluation of Misreporting

In the present research, EFSA protocol was used to assess misreporting [18], which has also been detailed previously [23]. EFSA recommends that the data should be reported for the complete population as well as divided into plausible and non-plausible reporters, as we do in the current paper. The method that was proposed by EFSA compares the reported energy intake (EI_{rep}) as compared to the supposed energy requirements. EI_{rep} is expressed as a multiple of the mean basal metabolic rate estimated (BMRest), and it is compared to the presumed energy expenditure of the studied population. Subsequently, the ratio EI_{rep}:BMRest is referred to as the physical activity levels (PAL); PAL is established for young people (≤ 17 years) and adults (≥ 18 years) in three levels: low (1.6 and 1.4); moderate (1.8 and 1.6); and, vigorous (2.0 and 1.8). The protocol specifies that the analyses should be performed at group and individual levels. The group level determines the overall bias to the reported EI, and the individual level shows the rate of under and over reporters. To calculate the misreporting at both levels, the lower and the upper cut-off values were specifically calculated for the population. Plausible reporters were considered those individuals with estimated values of the ratio reported EI_{rep}: BMRest ranging between calculated lower cut-off and upper cut-off values for the studied population allocated to the different category of physical activity [20]. The BMRest was calculated using the Schofield equations [29], and the physical activity was assessed during interviews with the international physical activity questionnaire (IPAQ) [30]. Misreporting cut-offs at the group and individual levels for the ANIBES study have been detailed previously [23,24] and are shown in Table 1. CV-WEI (coefficient of variance in energy intake within-subject) for the ANIBES population was 36.6% for children and adolescents and 41.6% for adults, respectively; and, S (factor that considers the variation in energy intake, BMR and PAL) was 27.3 and 29.6 for children and adolescents and adults, respectively.

Table 1. Calculated misreporting cut-off at group and individual levels for the Anthropometry, Intake, and Energy Balance in Spain (ANIBES) study.

| PAL | Misreporting Cut-off | | | |
|-----|--------------------------|-------|------------------|-------|
| | Group Level | | Individual Level | |
| | Lower | Upper | Lower | Upper |
| | Children and adolescents | | | |
| 1.6 | 1.55 | 1.66 | 0.93 | 2.76 |
| 1.8 | 1.73 | 1.86 | 1.04 | 3.10 |
| 2.0 | 1.93 | 2.07 | 1.16 | 3.45 |
| | Adults and elderly | | | |
| 1.4 | 1.38 | 1.42 | 0.77 | 2.53 |
| 1.6 | 1.58 | 1.62 | 0.88 | 2.89 |
| 1.8 | 1.77 | 2.83 | 1.00 | 3.25 |

2.4. Statistical Analysis

Analyses were performed using IBM SPSS version 22.0 (IBM Corp., Armonk, NY, USA). Data are expressed as mean \pm standard error of the mean (SEM), median, ranges, percentiles, and percentages. Normality of the distribution was assessed using the Kolmogorov–Smirnov normality test in a random sample (2009 participants) and random plus booster sample (2285). Depending on the normality distribution, parametric or non-parametric statistical tests were used for comparisons among groups. The random sample was used to show total sample data and to compare between sexes.

A booster sample was included to enlarge those groups less represented in the random sample to compare by sex within each age group. Comparisons between groups were performed by the Mann–Whitney *U* test or a Student's *t*-test for independent samples to evaluate differences by sex both for each age group and the whole population.

Kruskal–Wallis analysis or analyses of variance (ANOVA) tests with Bonferroni correction for multiple comparisons were performed to calculate differences among each age group. These procedures have considered the sampling complexity during the stratification of the study design. The level of significance was set at $p < 0.05$.

3. Results

3.1. Thiamin, Riboflavin, Niacin and Vitamin B₆ Reported Intake and Distribution in the Whole Population

Table 2 depicts the daily reported intake levels of thiamin, riboflavin, niacin, and vitamin B₆.

3.2. Thiamin, Riboflavin, Niacin and Vitamin B₆ Reported Intake in Plausible and Non-Plausible Reporters

Table 3 shows the vitamin intake data divided by plausible and non-plausible reporters. The percentages of plausible reporters by age groups were as follows: children 56%, adolescents 36%, adults 26%, and elderly 22%. According to the misreporting analysis, we observed that the reported consumption of the four nutrients was significantly higher ($p < 0.001$) in the plausible reporters than in the non-plausible reporters in the whole population, as well as divided by age group and within sexes.

Table 2. Daily Thiamin, Riboflavin, niacin, and vitamin B₆ reported intake by sex and age group in the ANIBES Study population.

| | Total | | | Children 9–12 Years | | | Adolescents 13–17 Years | | | Adults 18–64 Years | | | Elderly 65–75 Years | | |
|---------------------------------------|----------|---------------|------------------|---------------------|-------------|------------------|-------------------------|---------------|------------------|--------------------|---------------|--------------------|---------------------|---------------|------------------|
| | <i>n</i> | Mean ± SEM | Median (Range) | <i>n</i> | Mean ± SEM | Median (Range) | <i>n</i> | Mean ± SEM | Median (Range) | <i>n</i> | Mean ± SEM | Median (Range) | <i>n</i> | Mean ± SEM | Median (Range) |
| THIAMIN (mg/day) | | | | | | | | | | | | | | | |
| Total | 2009 | 1.17 ± 0.02 | 1.07 (0.30–3.44) | 213 | 1.24 ± 0.03 | 1.20 (0.41–3.32) | 211 | 1.28 ± 0.03 | 1.24 (0.41–3.01) | 1655 | 1.18 ± 0.02 | 1.07 (0.30–3.44) | 206 | 1.06 ± 0.03 | 0.97 (0.40–2.69) |
| Men | 1013 | 1.27 ± 0.04 * | 1.15 (0.33–3.44) | 126 | 1.28 ± 0.04 | 1.22 (0.41–3.32) | 137 | 1.35 ± 0.04 | 1.28 (0.41–3.01) | 798 | 1.29 ± 0.05 * | 1.16 (0.33–3.44) | 99 | 1.41 ± 0.04 | 1.00 (0.42–2.69) |
| Women | 996 | 1.07 ± 0.01 | 1.00 (0.30–2.70) | 87 | 1.18 ± 0.04 | 1.15 (0.41–2.70) | 74 | 1.14 ± 0.04 | 1.17 (0.52–2.31) | 857 | 1.07 ± 0.01 | 1.01 (0.30–2.68) | 107 | 0.98 ± 0.03 | 0.89 (0.40–2.17) |
| RIBOFLAVIN (mg/day) | | | | | | | | | | | | | | | |
| Total | 2009 | 1.44 ± 0.02 | 1.34 (0.37–3.54) | 213 | 1.56 ± 0.03 | 1.54 (0.50–3.41) | 211 | 1.51 ± 0.04 | 1.43 (0.53–3.82) | 1655 | 1.44 ± 0.02 | 1.33 (0.40–3.54) | 206 | 1.39 ± 0.04 | 1.32 (0.37–4.71) |
| Men | 1013 | 1.53 ± 0.04 * | 1.40 (0.42–3.54) | 126 | 1.62 ± 0.04 | 1.56 (0.50–3.41) | 137 | 1.63 ± 0.05 * | 1.51 (0.55–3.82) | 798 | 1.54 ± 0.05 * | 1.39 (0.42–3.54) | 99 | 1.47 ± 0.07 | 1.32 (0.61–4.71) |
| Women | 996 | 1.35 ± 0.01 | 1.29 (0.37–3.08) | 87 | 1.49 ± 0.05 | 1.49 (0.53–2.57) | 74 | 1.29 ± 0.04 | 1.27 (0.53–2.04) | 857 | 1.36 ± 0.02 | 1.28 (0.40 + 3.47) | 107 | 1.33 ± 0.05 | 1.32 (0.37–2.99) |
| NIACIN (mg/day) | | | | | | | | | | | | | | | |
| Total | 2009 | 29.1 ± 0.2 | 27.9 (6.7–109.0) | 213 | 28.5 ± 0.5 | 27.5 (8.6–58.4) | 211 | 30.2 ± 0.7 | 30.1 (11.7–73.6) | 1655 | 29.4 ± 0.3 | 28.1 (6.6–109.0) | 206 | 26.0 ± 0.6 | 25.0 (9.1–70.3) |
| Men | 1013 | 31.4 ± 0.3 * | 30.2 (9.8–109.0) | 126 | 29.4 ± 0.7 | 28.9 (8.6–58.4) | 137 | 32.4 ± 0.8 * | 32.0 (11.7–73.6) | 798 | 31.9 ± 0.4 * | 30.6 (12.1–109.0) | 99 | 28.0 ± 1.0 * | 26.2 (9.8–70.3) |
| Women | 996 | 26.7 ± 0.3 | 26.1 (6.7–66.1) | 87 | 27.0 ± 0.8 | 26.1 (13.3–50.6) | 74 | 26.1 ± 0.9 | 26.2 (12.4–45.3) | 857 | 27.1 ± 0.3 | 26.4 (6.7–66.1) | 107 | 24.2 ± 0.7 | 22.6 (9.1–48.2) |
| VITAMIN B₆ (mg/day) | | | | | | | | | | | | | | | |
| Total | 2009 | 1.54 ± 0.01 | 1.44 (0.28–9.30) | 213 | 1.51 ± 0.03 | 1.51 (0.49–4.29) | 211 | 1.54 ± 0.04 | 1.47 (0.62–3.62) | 1655 | 1.55 ± 0.02 | 1.44 (0.28–9.30) | 206 | 1.56 ± 0.05 | 1.39 (0.62–5.29) |
| Men | 1013 | 1.64 ± 0.02 * | 1.51 (0.44–9.30) | 126 | 1.54 ± 0.04 | 1.54 (0.56–4.29) | 137 | 1.62 ± 0.05 * | 1.57 (0.63–3.62) | 798 | 1.65 ± 0.03 * | 1.49 (0.44–9.30) | 99 | 1.71 ± 0.08 * | 1.51 (0.73–5.29) |
| Women | 996 | 1.45 ± 0.02 | 1.37 (0.28–3.94) | 87 | 1.46 ± 0.06 | 1.46 (0.49–3.28) | 74 | 1.40 ± 0.05 | 1.31 (0.62–2.86) | 857 | 1.46 ± 0.02 | 1.39 (0.28–3.94) | 107 | 1.42 ± 0.05 | 1.29 (0.62–3.61) |

Results are expressed as the mean ± standard error of the mean (SEM) and median with range (in brackets); (*) *t*-tests were used to evaluate differences by sex within the whole population and within each age group. Analysis of variance (ANOVA) tests were used to calculate differences among age groups (mean values within the same row with unlike superscript letters were significantly different). *p* < 0.05 was considered statistically significant.

Table 3. Daily thiamin, riboflavin, niacin, and vitamin B₆ reported intake by plausible reporters, non-plausible reporters, and age group in the ANIBES Study population.

| | Total | | | Children 9–12 Years | | | Adolescents 13–17 Years | | | Adults 18–64 Years | | | Elderly 65–75 Years | | |
|----------------------------|----------|-------------|------------------|---------------------|-------------|------------------|-------------------------|-------------|------------------|--------------------|-------------|------------------|---------------------|-------------|------------------|
| | <i>n</i> | Mean ± SEM | Median (Range) | <i>n</i> | Mean ± SEM | Median (Range) | <i>n</i> | Mean ± SEM | Median (Range) | <i>n</i> | Mean ± SEM | Median (Range) | <i>n</i> | Mean ± SEM | Median (Range) |
| THIAMIN (mg/day) | | | | | | | | | | | | | | | |
| Plausible reporters | 543 | 1.42 ± 0.02 | 1.32 (0.60–4.88) | 120 | 1.37 ± 0.04 | 1.31 (0.63–3.32) | 76 | 1.48 ± 0.05 | 1.43 (0.60–3.01) | 433 | 1.43 ± 0.03 | 1.32 (0.65–4.88) | 45 | 1.31 ± 0.05 | 1.26 (0.74–2.31) |
| Men | 232 | 1.60 ± 0.03 | 1.50 (0.63–4.88) | 68 | 1.42 ± 0.05 | 1.28 (0.63–3.32) | 48 | 1.60 ± 0.06 | 1.53 (0.93–3.01) | 158 | 1.70 ± 0.05 | 1.59 (0.83–4.88) | 24 | 1.42 ± 0.09 | 1.39 (0.90–2.31) |
| Women | 311 | 1.27 ± 0.02 | 1.23 (0.60–2.70) | 52 | 1.30 ± 0.05 | 1.28 (0.79–2.70) | 28 | 1.27 ± 0.07 | 1.27 (0.60–2.31) | 275 | 1.27 ± 0.02 | 1.21 (0.65–2.61) | 21 | 1.18 ± 0.05 | 1.21 (0.74–1.64) |
| Non-Plausible reporters | 1466 | 1.09 ± 0.02 | 0.99 (0.30–3.44) | 93 | 1.08 ± 0.04 | 1.02 (0.41–2.60) | 135 | 1.16 ± 0.03 | 1.11 (0.41–2.48) | 1222 | 1.09 ± 0.03 | 0.99 (0.33–3.44) | 161 | 0.99 ± 0.03 | 0.89 (0.40–2.69) |
| Men | 781 | 1.18 ± 0.04 | 1.07 (0.33–3.44) | 58 | 1.12 ± 0.06 | 1.01 (0.41–2.60) | 89 | 1.22 ± 0.05 | 1.15 (0.41–2.48) | 640 | 1.19 ± 0.05 | 1.08 (0.3–3.4) | 75 | 1.05 ± 0.05 | 0.97 (0.42–2.69) |
| Women | 685 | 0.98 ± 0.01 | 0.92 (0.03–2.68) | 35 | 1.01 ± 0.06 | 1.04 (0.41–1.83) | 46 | 1.06 ± 0.04 | 1.07 (0.52–1.68) | 582 | 0.98 ± 0.01 | 0.92 (0.30–2.68) | 86 | 0.93 ± 0.04 | 0.85 (0.40–2.17) |
| RIBOFLAVIN (mg/day) | | | | | | | | | | | | | | | |
| Plausible reporters | 543 | 1.74 ± 0.02 | 1.65 (0.69–6.13) | 120 | 1.72 ± 0.04 | 1.67 (0.96–3.41) | 76 | 1.79 ± 0.06 | 1.77 (0.78–3.46) | 433 | 1.73 ± 0.03 | 1.63 (0.9–6.13) | 45 | 1.77 ± 0.10 | 1.68 (0.85–4.18) |
| Men | 232 | 1.93 ± 0.03 | 1.84 (0.92–6.13) | 68 | 1.77 ± 0.05 | 1.73 (1.04–3.41) | 48 | 1.95 ± 0.08 | 1.92 (1.09–3.46) | 158 | 1.98 ± 0.05 | 1.88 (0.93–6.13) | 24 | 1.96 ± 0.14 | 1.72 (0.92–4.18) |
| Women | 311 | 1.59 ± 0.02 | 1.54 (0.69–3.08) | 52 | 1.65 ± 0.06 | 1.58 (0.96–2.57) | 28 | 1.52 ± 0.06 | 1.51 (0.78–2.04) | 275 | 1.59 ± 0.03 | 1.52 (0.69–3.08) | 21 | 1.56 ± 0.11 | 1.56 (0.85–2.99) |
| Non-Plausible reporters | 1466 | 1.34 ± 0.02 | 1.25 (0.37–3.53) | 93 | 1.36 ± 0.04 | 1.35 (0.50–3.04) | 135 | 1.35 ± 0.04 | 1.34 (0.53–3.82) | 1222 | 1.34 ± 0.03 | 1.24 (0.40–3.54) | 161 | 1.29 ± 0.04 | 1.22 (0.37–4.71) |
| Men | 781 | 1.42 ± 0.04 | 1.30 (0.42–3.53) | 58 | 1.43 ± 0.06 | 1.35 (0.50–3.04) | 89 | 1.45 ± 0.06 | 1.38 (0.55–3.82) | 640 | 1.43 ± 0.06 | 1.30 (0.42–3.54) | 75 | 1.31 ± 0.07 | 1.20 (0.61–4.71) |
| Women | 685 | 1.25 ± 0.02 | 1.19 (0.37–2.47) | 35 | 1.25 ± 0.07 | 1.32 (0.53–1.83) | 46 | 1.15 ± 0.05 | 1.09 (0.53–1.84) | 582 | 1.25 ± 0.02 | 1.18 (0.40–3.47) | 86 | 1.27 ± 0.05 | 1.25 (0.37–2.61) |

Results are expressed as the mean standard error of the mean and median with range (in brackets). There were significant differences between plausible and non-plausible reporters for the whole population and within sexes into each age group ($p < 0.05$), except for vitamin B₆ in the children, adults and elderly.

Table 3. Cont.

| | Total | | | Children 9–12 Years | | | Adolescents 13–17 Years | | | Adults 18–64 Years | | | Elderly 65–75 Years | | |
|---------------------------------------|----------|-------------|-------------------|---------------------|-------------|------------------|-------------------------|-------------|------------------|--------------------|-------------|-------------------|---------------------|-------------|------------------|
| | <i>n</i> | Mean ± SEM | Median (Range) | <i>n</i> | Mean ± SEM | Median (Range) | <i>n</i> | Mean ± SEM | Median (Range) | <i>n</i> | Mean ± SEM | Median (Range) | <i>n</i> | Mean ± SEM | Median (Range) |
| NIACIN (mg/day) | | | | | | | | | | | | | | | |
| Plausible reporters | 543 | 34.1 ± 0.4 | 33.0 (13.3–105.9) | 120 | 31.2 ± 0.6 | 31.1 (18.8–58.4) | 76 | 34.0 ± 1.1 | 33.1 (13.9–68.3) | 433 | 35.1 ± 0.5 | 33.8 (13.3–105.9) | 45 | 32.6 ± 1.5 | 32.9 (16.0–70.3) |
| Men | 232 | 38.1 ± 0.6 | 36.1 (16.0–105.8) | 68 | 32.4 ± 0.8 | 31.6 (18.8–58.4) | 48 | 37.3 ± 1.2 | 35.7 (17.7–68.3) | 158 | 41.1 ± 1.0 | 39.0 (19.8–105.9) | 24 | 35.7 ± 2.3 | 34.1 (16.0–70.3) |
| Women | 311 | 30.9 ± 0.4 | 30.7 (13.3–66.1) | 52 | 29.7 ± 1.0 | 28.4 (19.5–50.6) | 28 | 28.2 ± 1.5 | 28.2 (13.9–45.3) | 275 | 31.6 ± 0.5 | 30.8 (13.3–66.1) | 21 | 29.0 ± 1.5 | 29.8 (16.6–39.9) |
| Non-Plausible reporters | 1466 | 27.0 ± 0.2 | 25.8 (6.7–109.0) | 93 | 25.0 ± 0.8 | 24.3 (8.6–46.1) | 135 | 28.1 ± 0.8 | 27.6 (11.7–73.6) | 1222 | 27.4 ± 0.3 | 26.1 (6.7–109.0) | 161 | 24.2 ± 0.6 | 22.8 (9.1–61.8) |
| Men | 781 | 29.1 ± 0.3 | 27.6 (8.6–109.0) | 58 | 26 ± 1 | 26 (9–46) | 89 | 29.7 ± 1.0 | 28.5 (11.7–73.6) | 640 | 29.6 ± 0.4 | 28.1 (12.1–109.0) | 75 | 25.5 ± 0.9 | 24.9 (9.8–61.8) |
| Women | 685 | 24.7 ± 0.3 | 24.1 (6.7–53.2) | 35 | | | 46 | 24.9 ± 1.1 | 24.5 (12.4–43.5) | 582 | 25.0 ± 0.3 | 24.6 (6.7–53.2) | 86 | 23.1 ± 0.7 | 21.9 (9.1–48.2) |
| VITAMIN B₆ (mg/day) | | | | | | | | | | | | | | | |
| Plausible reporters | 543 | 1.83 ± 0.03 | 1.72 (0.57–7.71) | 120 | 1.66 ± 0.04 | 1.63 (0.83–4.29) | 76 | 1.80 ± 0.06 | 1.81 (0.62–3.62) | 433 | 1.85 ± 0.03 | 1.73 (0.57–7.71) | 45 | 2.06 ± 0.12 | 1.89 (0.99–5.29) |
| Men | 232 | 2.05 ± 0.04 | 1.90 (0.85–7.71) | 68 | 1.71 ± 0.06 | 1.68 (0.87–4.29) | 48 | 1.92 ± 0.07 | 1.86 (1.05–3.62) | 158 | 2.20 ± 0.07 | 2.06 (0.85–7.71) | 24 | 2.35 ± 0.19 | 2.11 (1.12–5.29) |
| Women | 311 | 1.7 ± 0.0 | 1.65 (0.57–3.94) | 52 | 1.58 ± 0.06 | 1.53 (0.83–3.16) | 28 | 1.60 ± 0.10 | 1.49 (0.62–2.86) | 275 | 1.66 ± 0.03 | 1.60 (0.57–3.94) | 21 | 1.74 ± 0.10 | 1.71 (0.99–3.01) |
| Non-Plausible reporters | 1466 | 1.43 ± 0.01 | 1.33 (0.28–9.30) | 93 | 1.32 ± 0.05 | 1.30 (0.49–3.28) | 135 | 1.39 ± 0.04 | 1.34 (0.63–3.16) | 1222 | 1.44 ± 0.02 | 1.33 (0.28–9.30) | 161 | 1.42 ± 0.04 | 1.31 (0.62–3.72) |
| Men | 781 | 1.49 ± 0.02 | 1.39 (0.44–9.30) | 58 | 1.34 ± 0.06 | 1.37 (0.56–2.50) | 89 | 1.46 ± 0.06 | 1.39 (0.63–3.16) | 640 | 1.51 ± 0.03 | 1.39 (0.44–9.30) | 75 | 1.50 ± 0.06 | 1.39 (0.73–3.72) |
| Women | 685 | 1.35 ± 0.02 | 1.26 (0.28–3.61) | 35 | 1.28 ± 0.09 | 1.25 (0.49–3.28) | 46 | 1.28 ± 0.05 | 1.2 (0.70–2.21) | 582 | 1.36 ± 0.02 | 1.28 (0.28–3.17) | 86 | 1.34 ± 0.05 | 1.21 (0.62–3.61) |

3.3. Disparity between Reported Intake and the Level Needed for Adequacy for Thiamin, Riboflavin, Niacin and Vitamin B₆ in the Whole Population

Table 4 shows the percentage of the entire population and the plausible energy reporters that met 80% of the European recommended daily intakes for thiamin [4], riboflavin [8], niacin [12], and vitamin B₆ [14]. The entire population met the daily intake recommendations for niacin and vitamin B₆; however, 28% of the population did not meet the daily intake recommendations for thiamin and riboflavin.

Table 4. Percentage of the population with adequate intake of thiamin, riboflavin, niacin, and vitamin B₆, for the whole population and for the plausible energy reporters by age groups.

| | Total | Children 9–12 Years | Adolescents 13–17 Years | Adults 18–64 Years | Elderly 65–75 Years |
|----------------------------------|-------|------------------------|----------------------------|-----------------------|------------------------|
| | EFSA | EFSA | EFSA | EFSA | EFSA |
| THIAMIN (%) | | | | | |
| Whole population | 71.2 | 91.5 | 77.7 | 70.8 | 61.2 |
| Men | 75.9 | 92.9 | 81.8 | 74.9 | 70.7 |
| Women | 66.5 | 89.7 | 70.3 | 67.0 | 52.3 |
| Plausible reporters | 93.6 | 99.2 | 90.8 | 91.9 | 93.3 |
| Men | 98.3 | 98.5 | 95.8 | 97.5 | 100.0 |
| Women | 90.0 | 100.0 | 82.1 | 88.7 | 85.7 |
| RIBOFLAVIN (%) | | | | | |
| Whole population | 72.0 | 92.5 | 83.4 | 70.2 | 66.5 |
| Men | 75.4 | 95.2 | 86.9 | 74.3 | 67.7 |
| Women | 68.5 | 88.5 | 77.0 | 66.4 | 65.4 |
| Plausible reporters | 91.3 | 100.0 | 98.7 | 89.6 | 84.4 |
| Men | 97.8 | 100.0 | 100.0 | 97.5 | 95.8 |
| Women | 68.5 | 100.0 | 96.4 | 85.1 | 71.4 |
| NIACIN (%) | | | | | |
| Whole population | 99.0 | 100.0 | 99.5 | 98.9 | 97.6 |
| Men | 99.6 | 100.0 | 100.0 | 99.7 | 98.0 |
| Women | 98.3 | 100.0 | 98.6 | 98.1 | 97.2 |
| Plausible reporters | 100.0 | 100.0 | 100.0 | 100.0 | 100.0 |
| Men | 100.0 | 100.0 | 100.0 | 100.0 | 100.0 |
| Women | 100.0 | 100.0 | 100.0 | 100.0 | 100.0 |
| VITAMIN B₆ (%) | | | | | |
| Whole population | 77.2 | 89.7 | 83.4 | 76.0 | 78.6 |
| Men | 79.9 | 92.1 | 87.6 | 78.2 | 86.9 |
| Women | 74.5 | 86.2 | 75.7 | 74.0 | 71.0 |
| Plausible reporters | 93.4 | 97.5 | 93.4 | 91.9 | 97.8 |
| Men | 99.1 | 98.5 | 100.0 | 99.4 | 100.0 |
| Women | 89.1 | 96.2 | 82.1 | 87.6 | 95.2 |

Results are expressed in percentage. Recommended daily intakes for Europe for thiamin [4], riboflavin [8], niacin [12], and vitamin B₆ [15]. Adequacy intake was calculated comparing with 80% of the EFSA PRI or AI.

3.4. Contribution of Food Sources to Thiamin, Riboflavin, Niacin and Vitamin B₆ Reported Intakes

The intake data was grouped into 16 food groups, 33 subgroups, and 754 ingredients for in-depth analysis.

Figure 1 depicts the contribution (%) of food and beverage categories to the daily thiamin, riboflavin, niacin, and vitamin B₆ reported intake for the whole population. Supplementary Figures S1–S4 show these data separately by age groups. Supplements and meal replacements contribute with 0.2% or less than the intake of the four analysed vitamins.

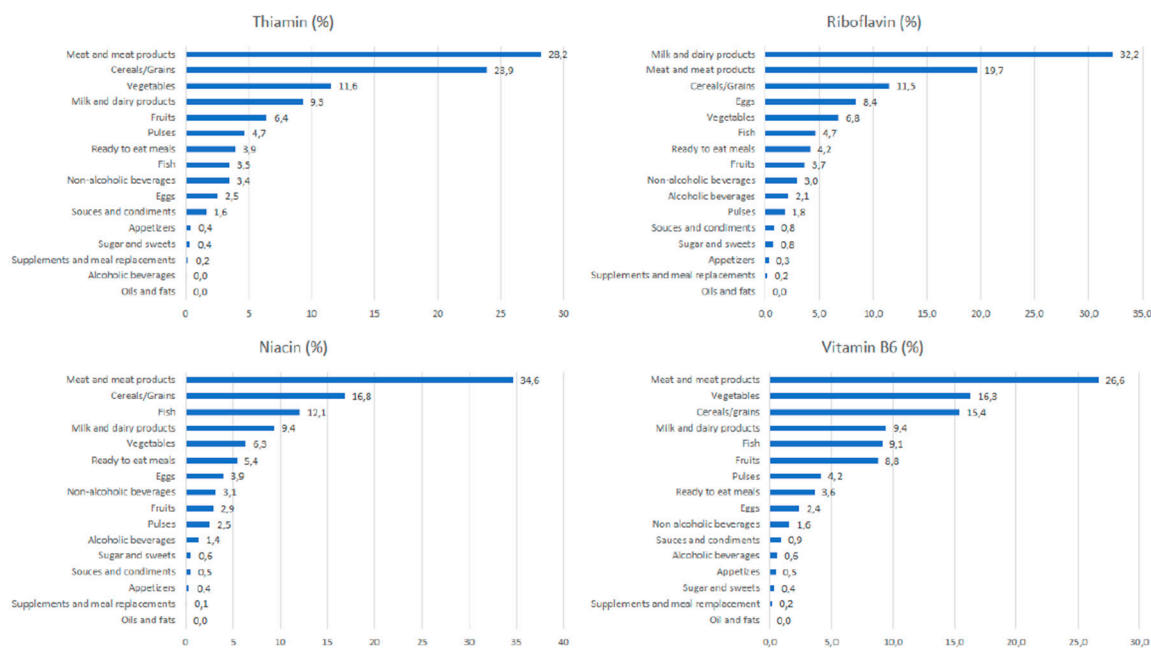


Figure 1. Contribution of food sources to the daily thiamin, riboflavin, niacin vitamins B6 intake in the total ANIBES population.

3.4.1. Thiamin

The main sources of thiamin for the entire population were meat and meat products (28.2%; this contribution was higher in seniors, 39.1%), cereals and grains (23.9%), and vegetables (11.6%). Cereals and grains provided higher percentages to the younger groups, whereas fish did for the older groups. Milk and dairy products (9.3%), fruits (6.4%), pulses (4.7%), and ready-to-eat meals (3.9%) complete the list to reach more than the 85% of the total reported intake of thiamin. Ready-to-eat meals afforded a higher percentage in the adolescent’s group, while fish did for the older groups.

3.4.2. Riboflavin

The largest source was milk and dairy products (32.2%), with a higher contribution for the children group (39.8%). Meat and meat products provided 19.7% and cereals and grains 11.5%. Eggs contributed 8.4% and vegetables 6.8%; this last food group afforded less in the younger groups and more in the elderly groups. Fish supplied 4.7%, and ready-to-eat meals 4.2%; the last food group contributed more to the younger groups and less to the older adults. All of these groups afforded nearly 90.0% of the riboflavin reported intake.

3.4.3. Niacin

Meat and meat products were the main sources of niacin for the whole population (34.6%), contributing in higher proportions to the younger groups than to the older adults. Cereals and grains products provided 16.8% to the whole population, contributing more to the younger groups. Fish ranked third (12.1%), and next was milk and dairy products (9.4%); this last food group provided less among the younger groups and more among the older adults. Vegetables supplied 6.3%, ready-to-eat meals 5.4%, and eggs (3.9%) to the reported niacin consumption for the whole population. Except vegetables, these food groups contributed more to the younger groups and more to the older adults. All of these groups supplied nearly 90% of the total reported niacin intake.

3.4.4. Vitamin B₆

Meat and meat products was the main source of vitamin B₆ (26.6%) for the whole population, although it contributed much less in children and senior groups than adolescents and adult groups. Vegetables provided 16.3% and cereals and grains 15.4%, with the latter food group providing a higher proportion for the older groups. Milk and dairy supplied 9.4% to the whole population, thus contributing to the largest proportion in the younger groups. These four food groups, together with fish (9.1%), contributed close to 80% of the total daily vitamin B₆ reported intake.

4. Discussion

The water-soluble B vitamins thiamin, riboflavin, and niacin have important functions as part of the energy metabolism. Consequently, the reference values for the intake of these vitamins are derived in consideration of the reference values for energy intake. The present paper analyzes the daily intake of the main micronutrients that are involved in the energy metabolism. Individuals in the ANIBES who met the European recommendations for thiamin, riboflavin, niacin, and B₆ were 71.2%, 72.0%, 99.0%, and 77.2%, respectively. Even when the plausible energy reporters were analyzed separately, these percentages remained above 90% for each vitamin.

When we compare our findings with other studies, we observe that only a few studies applied the misreporting methodology, showing extensive variability regarding underreporting. In this line, when studies used the 24-h recall method, misreporting goes from 4% to 67%, and when the food record method is used, this goes from 8% to 49% [31,32]. The typical range of misreporting observed in studies goes from 20% to 30%, thus being higher in women than in men, and more common among overweight and obese individuals [33,34]. However, our study presented a higher proportion of non-plausible reporters both in males (53.3%) and females (46.7%) [25]. In addition, while adults presented 75.9% of non-plausible reporters, in children and adolescents only 5.8% and 8.4%, respectively, was included in this group. Nonetheless, even with a lower total population that reported a plausible energy intake, we can ensure that our data are reliable and reflect the true nutrient intake situation of the Spanish population [24].

When comparing the thiamin data obtained in the present study with the data obtained in ENALIA (The National Dietary Survey on the Child and Adolescent Population in Spain) [35] for children and adolescents (two non-consecutive 24 h dietary recalls), we observed that the thiamin intake was similar for male children (1.4 mg/day) and adolescents (1.6 mg/day), as well as for women (1.3 mg/day and 1.3 mg/day, respectively). However, when ANIBES data were compared with the ENIDE (Spanish Dietary Intake Survey) (two non-consecutive 24 h dietary recalls) [36] for adults, we observed lower values in men (1.7 mg/d vs. 2.06 mg/d) and women (1.2 mg/d vs. 1.76 mg/d). In both cases, when we consider only the ANIBES plausible energy reporters, the intake of this nutrient was adequate for most of the population in these three studies when comparing with the European recommendations.

Regarding thiamin intake, other European studies indicate ranges in boys between 0.75 mg/day from the study VELS of Germany (two non-consecutive 24 h dietary recalls) [37] and 1.29 mg/kg from the NDNS of the United Kingdom (four-day dietary record) [38]. Likewise, thiamin intake ranges in girls from 0.68 mg/day to 1.29 mg/day in the same studies, respectively [37,38]. These data are lower than those obtained by our study, perhaps because in these studies children under nine years old were included. However, similar data to the ANIBES study were observed in the studies that were carried out in Germany [37,39], Finland (48 h dietary recalls) [40], France (seven days food records) [41], the United Kingdom [38], Italy (three days food record) [42], and the Netherlands (two non-consecutive 24 h dietary recalls) [43] for both male and female European adolescents. In the same way, ANIBES data from adults indicate consumption that is similar to other European studies, except for Italians [42], Dutch [37,39], and French [41], who showed lower consumption in both men and women. In relation to seniors, similarities are shown only with Finland (48 h dietary recalls) [44] and Sweden (food records-four days) [45] in both sexes, with lower values observed in the data of other countries. These

lower values in the data may be produced by not eliminating those who underestimated the intake, which is a strength of the ANIBES study. Nevertheless, the different methodology that is used in the studies for recording dietary intake makes comparison between studies difficult and discrepancies, but even similarities, can be casual. Therefore, there is a need for a methodological consensus in nutritional surveys to make data comparisons between studies reliable.

Unlike the ENIDE study [36] and European studies [4] where the main source of thiamin is cereals/grains followed by meat and meat products, in the ANIBES study, the main source of thiamin is meat and meat products, followed by cereals/grains, vegetables, and milk and dairy products. This distribution is found more in the old life stages, while in children and adolescents other products appear, such as fish and ready-to-eat meals as a source of thiamin. In recent years, these changes in the Spanish population's thiamin sources indicate that social and economic changes have led to substantial modifications in food patterns in the last decades, moving the Spanish diet away from the traditional Mediterranean Diet pattern [46].

Riboflavin intake that was obtained in this study for children and adolescents' plausible reporters was similar to the data obtained in ENALIA [35], both in males (children: 1.8 mg/day; adolescents: 1.9 mg/day) and females (children: 1.7 mg/day; adolescents: 1.5 mg/day). In adults, data from ANIBES showed similar values to the ENIDE study [36] when we study the whole population (men: 1.5 mg/day and women: 1.4 mg/day). However, when we use only plausible reporter data, our results are higher (men: 2.0 mg/day and women: 1.6 mg/day). The intake of riboflavin is adequate for 91.3% of the total when comparing with the European recommendations, being higher in the younger group.

Regarding the riboflavin intake in other European studies, the range in boys was between 1.1 mg/day from the study VELS of Germany [37] and 1.8 mg/kg from Finland [44]. Likewise, the riboflavin intake range in girls is from 1.0 mg/day to 1.6 mg/kg in the aforementioned countries, respectively [37,44]. Our data are in line with those observed in Finland, being higher than in other European countries [37–43]. In contrast, plausible female adolescent reporters from the ANIBES study showed similar data to other European female adolescents from Germany [37,39], Finland [40], France [41], the United Kingdom [38], Italy [42], and the Netherlands [43]. However, plausible male adolescent reporters from the ANIBES study presented similar data to those from Finland [40], France [41], and Italy [42], and higher than those from Germany [39], the United Kingdom [38], and the Netherlands [43].

Milk and dairy products make the greatest contribution to riboflavin intake in Western diets [47]. The same pattern was observed for both the ANIBES study and European studies [8]. After milk, meat and meat products, and cereals/grains are other riboflavin sources both in ANIBES and other European countries, such as Germany [37,39], Finland [40], France [41], the United Kingdom [38], Italy [42], and the Netherlands [43].

Niacin intake found in the ANIBES study for children and adolescents plausible reporters was similar to data found in the ENALIA study [35], both in males (children: 32 mg/day; adolescent: 41 mg/day) and females (children: 30 mg/day; adolescent: 32 mg/day). In adults, data from plausible reporters from the ANIBES study showed similar values to the ENIDE study [36] in males (41 mg/day). However, in female adults, the ANIBES study presented lower niacin intake (ANIBES: 32 mg/day and ENALIA: 35–36 mg/day) [35]. Despite these differences, niacin intake is adequate for 100% of the whole population when compared to the European recommendations [12].

Niacin intake in other European boys was similar in Italians (31.5 mg/day) [42] and in French (30.4 mg/day) [41]. Likewise, Italian girls ingested similar levels of niacin to ANIBES boys [42]. Curiously, other European children had low niacin intake [12]. On the other hand, Italian and French male and female adolescents had higher niacin intake than ANIBES adolescents. However, Dutch adolescents had lower intakes than ANIBES adolescents [43]. Italian and Finnish male adults and Dutch and Finnish [40] female adults consumed similar levels of niacin to the ANIBES adults. The rest of European adults, except for UK female adults (29.5 mg/day) [38], showed higher values of niacin intake, in some cases, values that were greater than 50 mg/day (Ireland: [48] and Sweden [45]).

Finally, the elderly from Finland, Dutch (females) and the UK showed similar niacin intake to the ANIBES elderly. Vitamin B₆ intake from the ANIBES study for Spanish children and adolescent plausible reporters was lower than from the ENALIA study [35], both in males (children: 2.0 mg/day; adolescents: 2.5 mg/day) and females (children: 1.9 mg/day; adolescents: 1.8 mg/day). Regarding Spanish adults, data from plausible reporters from the ANIBES study showed similar vitamin B₆ intake to the ENIDE study in females (1.7 mg/day) [36]. However, male adults from the ANIBES study presented higher vitamin B₆ intake than the ENALIA study (ANIBES: 2.2 mg/day and ENALIA: 1.98 mg/day) [35]. Despite these differences, the Spanish population from the ANIBES study met 93.4% of the European recommendations for vitamin B₆ intake [14].

Regarding vitamin B₆ intake, it was similar in other European boys: Finland (1.55 mg/day) [40], Germany (1.54 mg/day) [39], and in the UK (1.61 mg/d) [38]. Likewise, UK girls showed similar vitamin B₆ intake to ANIBES girls (1.51 mg/day) [38]. However, other European children presented low vitamin B₆ intake (boys: 1.10–1.45 mg/day and girls: 0.99–1.47 mg/day) [14]. On the other hand, French [41], German [39], Italian [42] male and female adolescents, and Dutch female [43] had similar vitamin B₆ intake to ANIBES adolescents. However, other European countries presented higher values of vitamin B₆ for adolescents [14]. With regard to adults, Dutch male and female adults [43] and male Finland adults [40] presented similar vitamin B₆ intake to Spanish adults from the ANIBES study. However, male adults from Sweden (2.54 mg/day) [45], Ireland (3.09 mg/day) [48], and the UK (2.50 mg/day) [38] and female adults from Ireland (2.11 mg/day) [48] presented higher intake values of vitamin B₆. Finally, elderly males from Sweden [45] showed similar vitamin B₆ intake data to the elderly from the ANIBES study. On the other hand, elderly males from Ireland (2.64 mg/day) and the UK (2.54 mg/day) [38], and elderly females from Sweden (2.11 mg/day) [45] and Ireland (2.16 mg/day) presented higher values of vitamin B₆ intake than the ANIBES study; Italy, Netherlands, Finland, and France presented lower values of vitamin B₆ intake than the Spanish elderly from the ANIBES study [14].

In general, vitamin B₆ food sources include meat and meat products, grains (whole grain corn/maize, brown rice, sorghum, quinoa, wheat germ), pulses, nuts, seeds, potatoes, and some herbs and spices (e.g., garlic, curry, ginger) [14]. In this line, both in European countries [14] and in the ANIBES study, the main source of vitamin B₆ is meat and meat products. Moreover, while in general, vegetables, cereals/grains, and eggs were included as vitamin B₆ sources in the ANIBES study, in other European countries grains and milk and dairy products were included.

The biggest strengths of the ANIBES study are the careful design, protocol, and methodology used. Moreover, the random representative sample of the Spanish population aged 9–75 years is also a big strength [26]—the whole population and the plausible energy reporters are taken into account. Some limitations have to be mentioned. The cross-sectional design provides evidence of associations but not causal relationships [24]. Moreover, the low retention data found after the analysis of misreporting is another limitation. Many studies about energy and nutrient intake, apart from national surveys, have an N lower than 500; in this respect, our N of plausible reporters is not negligible. On the other hand, although biotin is involved in the production of energy, we could not include this vitamin in the current analysis. The VD-FEN 2.1 software is based on the food composition tables of Moreiras et al., (2015), which do not include the amount of biotin in food [27]. It has to be mentioned that those participants who were assessed by telephone interview declared a significant lower energy intake (1690 ± 413 kcal/day) than those who recorded with tablet or camera (1824 ± 518 kcal/day, 1834 ± 517 kcal/day, respectively). But, it is important to add that telephone interviews were a minority (6.8%) when compared to tablets (82.4%) and cameras (10.8%), minimizing the bias in the collection of the data.

5. Conclusions

The reported intake of thiamin, riboflavin, niacin, and vitamin B₆ is adequate in the Spanish population according to the ANIBES study. In the whole studied group, 71.2% for thiamin, 72.0% for

riboflavin, 99.0% for niacin, and 77.2% for vitamin B₆ of the population reported intakes that were higher than 80% of the European recommended daily intakes. However, when only the plausible energy reporters are considered, these percentages increased to 93.6%, 91.3% 100%, and 93.4%, respectively. In general, these percentages of subjects meeting the European recommendations decreased with age. Meat and meat products were the main food source intakes for thiamin, niacin, and vitamin B₆, and milk and dairy products were the main food source intakes for riboflavin.

Supplementary Materials: The following are available online at <http://www.mdpi.com/2072-6643/10/7/846/s1>. Figure S1. Contribution of food sources to the daily thiamin, riboflavin, niacin vitamins B₆ intake in the ANIBES children. Figure S2. Contribution of food sources to the daily thiamin, riboflavin, niacin vitamins B₆ intake in the ANIBES adolescents. Figure S3. Contribution of food sources to the daily thiamin, riboflavin, niacin vitamins B₆ intake in the ANIBES adults. Figure S4. Contribution of food sources to the daily thiamin, riboflavin, niacin vitamins B₆ intake in the ANIBES elderly.

Author Contributions: J.M.-A., R.A.-U and J.O. analyzed the data; J.M.-A., R.A.-U. and M.G.-G. also drafted the manuscript. M.G.-G., J.A.-B., A.G., R.M.O., and L.S.-M. are members of the Scientific Advisory Board of the ANIBES study and were responsible for careful review of the protocol, design, and methodology. These authors provided continuous scientific advice for the study and for the interpretation of results. These authors also critically reviewed the manuscript. G.V.-M., Principal Investigator of the ANIBES study, was responsible for the design, protocol, methodology, and follow-up checks of the study. All authors approved the final version of the manuscript.

Funding: The ANIBES study was financially supported by a grant from Coca-Cola Iberia through an agreement with the Spanish Nutrition Foundation (FEN).

Acknowledgments: The authors would like to thank Coca-Cola Iberia and IPSOS for its support and technical advice, particularly Rafael Urrialde and Javier Ruiz.

Conflicts of Interest: The funding sponsors had no role in the design of the study, in the collection, analyses, or interpretation of the data; in the writing of the manuscript, and in the decision to publish the results. The authors declare no conflict of interest.

References

1. Ezzati, M.; Riboli, E. Behavioral and Dietary Risk Factors for Noncommunicable Diseases. *N. Engl. J. Med.* **2013**, *369*, 954–964. [[CrossRef](#)] [[PubMed](#)]
2. Institute of Medicine (US) Standing Committee on the Scientific Evaluation of Dietary Reference Intakes. *The B Vitamins and Choline: Overview and Methods*; National Academies Press: Washington, DC, USA, 1998.
3. Ortigoza-Escobar, J.D.; Alfadhel, M.; Molero-Luis, M.; Darin, N.; Spiegel, R.; de Co, I.F.; Gerards, M.; Taylor, R.W.; Artuch, R.; Nashabat, M.; et al. Thiamine Deficiency in Childhood with Attention to Genetic Causes: Survival and Outcome Predictors. *Ann. Neurol.* **2017**, *82*, 317–330. [[CrossRef](#)] [[PubMed](#)]
4. European Food Safety Authority (EFSA). Dietary Reference Values for Thiamin. *EFSA J.* **2016**, *14*, 4653.
5. Crook, M.A.; Sriram, K. Thiamine Deficiency: The Importance of Recognition and Prompt Management. *Nutrition* **2014**, *30*, 953–954. [[CrossRef](#)] [[PubMed](#)]
6. Huang, Y.C.; Lee, M.S.; Wahlqvist, M.L. Prediction of all-Cause Mortality by B Group Vitamin Status in the Elderly. *Clin. Nutr.* **2012**, *31*, 191–198. [[CrossRef](#)] [[PubMed](#)]
7. Institute of Medicine (US) Standing Committee on the Scientific Evaluation of Dietary Reference Intakes. *Dietary Reference Intakes for Thiamin, Riboflavin, Niacin, Vitamin B₆, Folate, Vitamin B₁₂, Pantothenic Acid, Biotin, and Choline*; National Academy of Sciences: Washington, DC, USA, 1998.
8. European Food Safety Authority (EFSA). Dietary Reference Values for Riboflavin. *EFSA J.* **2017**, *18*, 4919.
9. Lopez, R.; Schwartz, J.V.; Cooperman, J.M. Riboflavin Deficiency in an Adolescent Population in New York City. *Am. J. Clin. Nutr.* **1980**, *33*, 1283–1286. [[CrossRef](#)] [[PubMed](#)]
10. Bogan, K.L.; Brenner, C. Nicotinic Acid, Nicotinamide, and Nicotinamide Riboside: A Molecular Evaluation of NAD⁺ Precursor Vitamins in Human Nutrition. *Annu. Rev. Nutr.* **2008**, *28*, 115–130. [[CrossRef](#)] [[PubMed](#)]
11. Kirkland, J.B. Niacin Status, NAD Distribution and ADP-Ribose Metabolism. *Curr. Pharm. Des.* **2009**, *15*, 3–11. [[CrossRef](#)] [[PubMed](#)]
12. European Food Safety Authority (EFSA). Scientific Opinion on Dietary Reference Values for Niacin. *EFSA J.* **2014**, *12*, 3759.

13. Merkiel, S.; Chalcarz, W. Preschool Diets in Children from Pila, Poland, Require Urgent Intervention as Implied by High Risk of Nutrient Inadequacies. *J. Health Popul. Nutr.* **2016**, *35*, 11. [[CrossRef](#)] [[PubMed](#)]
14. European Food Safety Authority (EFSA). Dietary Reference Values for Vitamin B₆. *EFSA J.* **2016**, *14*, 4487.
15. Ho, C.L.; Quay, T.A.; Devlin, A.M.; Lamers, Y. Prevalence and Predictors of Low Vitamin B₆ Status in Healthy Young Adult Women in Metro Vancouver. *Nutrients* **2016**, *8*, 538. [[CrossRef](#)] [[PubMed](#)]
16. Gil, A.; Martínez de Victoria, E.; Olza, J. Indicators for the Evaluation of Diet Quality. *Nutr. Hosp.* **2015**, *31* (Suppl. S3), 128–144. [[PubMed](#)]
17. Elmadfa, I.; Meyer, A.L. Developing Suitable Methods of Nutritional Status Assessment: A Continuous Challenge. *Adv. Nutr.* **2014**, *5*, 590S–598S. [[CrossRef](#)] [[PubMed](#)]
18. European Food Safety Authority (EFSA). Guidance on the EU Menu Methodology. *EFSA J.* **2014**, *12*, 3944.
19. Archer, E.; Hand, G.A.; Blair, S.N. Validity of U.S. Nutritional Surveillance: National Health and Nutrition Examination Survey Caloric Energy Intake Data, 1971–2010. *PLoS ONE* **2013**, *8*, e76632. [[CrossRef](#)] [[PubMed](#)]
20. European Food Safety Authority (EFSA). *Example of a Protocol for Identification of Misreporting (Under- and Over-Reporting of Energy Intake) Based on the PILOT-PANEU Project*; European Food Safety Authority: Parma, Italy, 2017.
21. Varela Moreiras, G.; Avila, J.M.; Ruiz, E. Energy Balance, a New Paradigm and Methodological Issues: The ANIBES Study in Spain. *Nutr. Hosp.* **2015**, *31* (Suppl. S3), 101–112. [[PubMed](#)]
22. Ruiz, E.; Ávila, J.M.; Valero, T.; Del Pozo, S.; Rodríguez, P.; Aranceta-Bartrina, J.; Gil, Á.; González-Gross, M.; Ortega, R.M.; Serra-Majem, L. Macronutrient Distribution and Dietary Sources in the Spanish Population: Findings from the ANIBES Study. *Nutrients* **2016**, *8*, 177. [[CrossRef](#)] [[PubMed](#)]
23. Olza, J.; Aranceta-Bartrina, J.; Gonzalez-Gross, M.; Ortega, R.M.; Serra-Majem, L.; Varela-Moreiras, G.; Gil, A. Reported Dietary Intake, Disparity between the Reported Consumption and the Level Needed for Adequacy and Food Sources of Calcium, Phosphorus, Magnesium and Vitamin D in the Spanish Population: Findings from the ANIBES Study. *Nutrients* **2017**, *9*, 168. [[CrossRef](#)] [[PubMed](#)]
24. Olza, J.; Aranceta-Bartrina, J.; Gonzalez-Gross, M.; Ortega, R.M.; Serra-Majem, L.; Varela-Moreiras, G.; Gil, A. Reported Dietary Intake and Food Sources of Zinc, Selenium, and Vitamins, A., E and C in the Spanish Population: Findings from the ANIBES Study. *Nutrients* **2017**, *9*, 697. [[CrossRef](#)] [[PubMed](#)]
25. Samaniego-Vaesken, M.L.; Partearroyo, T.; Olza, J.; Aranceta-Bartrina, J.; Gil, A.; Gonzalez-Gross, M.; Ortega, R.M.; Serra-Majem, L.; Varela-Moreiras, G. Iron Intake and Dietary Sources in the Spanish Population: Findings from the ANIBES Study. *Nutrients* **2017**, *9*, 203. [[CrossRef](#)] [[PubMed](#)]
26. Ruiz, E.; Avila, J.M.; Castillo, A.; Valero, T.; Del Pozo, S.; Rodríguez, P.; Bartrina, J.A.; Gil, A.; Gonzalez-Gross, M.; Ortega, R.M.; et al. The ANIBES Study on Energy Balance in Spain: Design, Protocol and Methodology. *Nutrients* **2015**, *7*, 970–998. [[CrossRef](#)] [[PubMed](#)]
27. Moreiras, O.; Carbajal, Á.; Cabrera Forneiro, L.; Hoyos, C.; Carmen, M. Ingestas Recomendadas de energía y nutrientes para la población española. In *Tablas de Composición de Alimentos: Guía de Prácticas*, 17th ed.; Departamento de Nutrición, Universidad Complutense de Madrid: Madrid, Spain, 2015; pp. 258–259.
28. Partearroyo, T.; Samaniego-Vaesken, M.L.; Ruiz, E.; Olza, J.; Aranceta-Bartrina, J.; Gil, A.; Gonzalez-Gross, M.; Ortega, R.M.; Serra-Majem, L.; Varela-Moreiras, G. Dietary Sources and Intakes of Foliates and Vitamin B₁₂ in the Spanish Population: Findings from the ANIBES Study. *PLoS ONE* **2017**, *12*, e0189230. [[CrossRef](#)] [[PubMed](#)]
29. Schofield, W.N. Predicting Basal Metabolic Rate, New Standards and Review of Previous Work. *Hum. Nutr. Clin. Nutr.* **1985**, *39* (Suppl. S1), 5–41.
30. Mielgo-Ayuso, J.; Aparicio-Ugarriza, R.; Castillo, A.; Ruiz, E.; Ávila, J.M.; Aranceta-Bartrina, J.; Gil, Á.; Ortega, R.M.; Serra-Majem, L.; Varela-Moreiras, G. Physical Activity Patterns of the Spanish Population are mostly Determined by Sex and Age: Findings in the ANIBES Study. *PLoS ONE* **2016**, *11*, e0149969. [[CrossRef](#)] [[PubMed](#)]
31. Mendez, M.A.; Popkin, B.M.; Buckland, G.; Schroder, H.; Amiano, P.; Barricarte, A.; Huerta, J.; Quirós, J.R.; Sánchez, M.; González, C.A. Alternative Methods of Accounting for Underreporting and Overreporting when Measuring Dietary Intake-Obesity Relations. *Am. J. Epidemiol.* **2011**, *173*, 448–458. [[CrossRef](#)] [[PubMed](#)]
32. Poslusna, K.; Ruprich, J.; de Vries, J.H.; Jakubikova, M.; van't Veer, P. Misreporting of Energy and Micronutrient Intake Estimated by Food Records and 24 Hour Recalls, Control and Adjustment Methods in Practice. *Br. J. Nutr.* **2009**, *101* (Suppl. S2), S73–S85. [[CrossRef](#)] [[PubMed](#)]

33. Pasricha, S.R.; Low, M.; Thompson, J.; Farrell, A.; De-Regil, L.M. Iron Supplementation Benefits Physical Performance in Women of Reproductive Age: A Systematic Review and Meta-Analysis. *J. Nutr.* **2014**, *144*, 906–914. [CrossRef] [PubMed]
34. Serra-Majem, L.; Garcia-Closas, R.; Ribas, L.; Perez-Rodrigo, C.; Aranceta, J. Food Patterns of Spanish Schoolchildren and Adolescents: The enKid Study. *Public Health Nutr.* **2001**, *4*, 1433–1438. [CrossRef] [PubMed]
35. Lopez-Sobaler, A.M.; Aparicio, A.; Gonzalez-Rodriguez, L.G.; Cuadrado-Soto, E.; Rubio, J.; Marcos, V.; Sanchidrian, R.; Santos, S.; Perez-Farinos, N.; Dal Re, M.A.; et al. Adequacy of Usual Vitamin and Mineral Intake in Spanish Children and Adolescents: ENALIA Study. *Nutrients* **2017**, *9*, 131. [CrossRef] [PubMed]
36. Agencia Española de Seguridad Alimentaria y Nutrición (AESAN). Encuesta Nacional de Ingesta Dietética Española 2011. Available online: http://203.187.160.133:9011/www.laboratoriolcn.com/c3pr90ntc0td/f/docs/Valoracion_nutricional_ENIDE_micronutrientes.pdf (accessed on 28 June 2018).
37. Kersting, M.; Clausen, K. *Ernährungsphysiologische Auswertung Einer Repräsentativen Verzehrsstudie Bei Säuglingen und Kleinkindern VELS Mit Dem Instrumentarium der Donald Studie*; Forschungsinstitut für Kinderernährung: Dortmund, Germany, 2003.
38. Bates, B.; Lennox, A.; Prentice, A.; Bates, C.; Swan, G. *National Diet and Nutrition Survey. Headline Results from Years 1, 2 and 3 (Combined) of the Rolling Programme (2008/2009–2010/11)*; Department of Health and the Food Standards Agency: London, UK, 2012.
39. Mensink, G.; Heseker, H.; Richter, A.; Stahl, A.; Vohmann, C. EsKiMo—the Nutrition Module in the German Health Interview and Examination Survey for Children and Adolescents (KiGGS). *Bundesgesundheitsblatt Gesundheitsforschung Gesundheitsschutz* **2007**, *50*, 902–908. [CrossRef] [PubMed]
40. Hoppu, U.; Lehtisalo, J.; Kujala, J.; Keso, T.; Garam, S.; Tapanainen, H.; Uutela, A.; Laatikainen, T.; Rauramo, U.; Pietinen, P. The Diet of Adolescents can be Improved by School Intervention. *Public Health Nutr.* **2010**, *13*, 973–979. [CrossRef] [PubMed]
41. Afssa (Agence Française de Sécurité Sanitaire des Aliments). Etude Individuelle Nationale des Consommations Alimentaires 2 (INCA 2) (2006–2007). Available online: <https://www.anses.fr/fr/system/files/PASER-Ra-INCA2.pdf> (accessed on 28 June 2018).
42. Sette, S.; Le Donne, C.; Piccinelli, R.; Arcella, D.; Turrini, A.; Leclercq, C.; INRAN-SCAI 20052006–Study Group. The Third Italian National Food Consumption Survey, INRAN-SCAI 2005–06—part 1: Nutrient Intakes in Italy. *Nutr. Metabol. Cardiovasc. Dis.* **2011**, *21*, 922–932. [CrossRef] [PubMed]
43. Van Rossum, C.; Fransen, H.; Verkaik-Kloosterman, J.; Buurma-Rethans, E.; Ocké, M. Dutch National Food Consumption Survey 2007–2010: Diet of Children and Adults Aged 7 to 69 Years. Available online: <https://www.rivm.nl/bibliotheek/rapporten/350050006.pdf> (accessed on 28 June 2018).
44. Helldán, A.; Raulio, S.; Kosola, M.; Tapanainen, H.; Ovaskainen, M.; Virtanen, S. *Finravinto 2012–Tutkimus—the National FINDIET 2012 Survey*. Available online: https://www.julkari.fi/bitstream/handle/10024/110839/THL_RAP2013_016_%26sliitteet.pdf (accessed on 28 June 2018).
45. Amcoff, E.; Edberg, A.; Barbieri, H.; Lindroos, A.; Nälsén, C.; Pearson, M.; Lemming, E. *Livsmedels-Och Näringsintag Bland Vuxna i Sverige. Resultat Från Matvaneundersökning Utförd 2010–2011 Dietary Habits and Nutrient Intake in Sweden*; Livsmedelsverket: Uppsala, Sweden, 2012.
46. Varela-Moreiras, G.; Ruiz, E.; Valero, T.; Avila, J.M.; del Pozo, S. The Spanish Diet: An Update. *Nutr. Hosp.* **2013**, *28* (Suppl. S5), 13–20. [PubMed]
47. Powers, H.J. Riboflavin (Vitamin B-2) and Health. *Am. J. Clin. Nutr.* **2003**, *77*, 1352–1360. [CrossRef] [PubMed]
48. Irish Universities Nutrition Alliance. *National Adult Nutrition Survey: Summary Report*; Irish Universities Nutrition Alliance: Cork, Ireland, 2011.

