



## Spatially-averaged flows over mobile rough beds: equations for the second-order velocity moments

Konstantinos Papadopoulos, Vladimir Nikora, Stuart Cameron, Mark Stewart & Christopher Gibbins

To cite this article: Konstantinos Papadopoulos, Vladimir Nikora, Stuart Cameron, Mark Stewart & Christopher Gibbins (2020) Spatially-averaged flows over mobile rough beds: equations for the second-order velocity moments, Journal of Hydraulic Research, 58:1, 133-151, DOI: [10.1080/00221686.2018.1555559](https://doi.org/10.1080/00221686.2018.1555559)

To link to this article: <https://doi.org/10.1080/00221686.2018.1555559>



© 2019 The Author(s). Published by Informa UK Limited, trading as Taylor & Francis Group



Published online: 18 Jan 2019.



[Submit your article to this journal](#)



Article views: 952



[View related articles](#)



[View Crossmark data](#)




Citing articles: 1 [View citing articles](#)



Research paper

## Spatially-averaged flows over mobile rough beds: equations for the second-order velocity moments

KONSTANTINOS PAPADOPOULOS , Research Fellow, *School of Engineering, University of Aberdeen, Aberdeen, UK*  
Email: [kpapadopoulos@abdn.ac.uk](mailto:kpapadopoulos@abdn.ac.uk) (author for correspondence)

VLADIMIR NIKORA  (IAHR Member), Professor, *School of Engineering, University of Aberdeen, Aberdeen, UK*  
Email: [v.nikora@abdn.ac.uk](mailto:v.nikora@abdn.ac.uk)

STUART CAMERON, Research Fellow, *School of Engineering, University of Aberdeen, Aberdeen, UK*  
Email: [s.cameron@abdn.ac.uk](mailto:s.cameron@abdn.ac.uk)

MARK STEWART, Research Fellow, *School of Engineering, University of Aberdeen, Aberdeen, UK*  
Email: [mstewart@abdn.ac.uk](mailto:mstewart@abdn.ac.uk)

CHRISTOPHER GIBBINS, Professor, *School of Environmental and Geographical Sciences, University of Nottingham Malaysia Campus, Semenyih, Malaysia*  
Email: [Christopher.Gibbins@nottingham.edu.my](mailto:Christopher.Gibbins@nottingham.edu.my)

### ABSTRACT

The double-averaging methodology is used in this paper for deriving equations for the second-order velocity moments (i.e. turbulent and dispersive stresses) that emerge in the double-averaged momentum equation for incompressible Newtonian flows over mobile boundaries. The starting point in the derivation is the mass and momentum conservation equations for local (at a point) instantaneous variables that are up-scaled by employing temporal and spatial averaging. First, time-averaged conservation equations for mass, momentum, and turbulent stresses for mobile bed conditions are derived. Then, the double-averaged hydrodynamic equations obtained by spatial averaging the time-averaged equations are proposed. The derived second-order equations can serve as a basis for the construction of simplified mathematical and numerical models and for interpretation of experimental and simulation data when bed mobility is present. Potential applications include complex flow situations such as free-surface flows over vegetated or mobile sedimentary beds and flows through tidal and wind turbine arrays.

**Keywords:** Double averaging methodology; form-induced stress; mobile-boundary flows; second-order hydrodynamic equations; spatially-averaged turbulent stress; turbulence

### 1 Introduction

Overland, river, coastal and atmospheric flows frequently exhibit high levels of multi-scale spatial heterogeneity due to geometrically complex and, occasionally, mobile boundaries. This heterogeneity affects the instantaneous and time-averaged flow fields, especially in the region near the bounding surface. Various averaging techniques such as ensemble, temporal and/or spatial averaging have been typically applied to cope with this flow heterogeneity (e.g. Ishii & Hibiki, 2006; Jackson, 2000; Monin & Yaglom, 1971; Whitaker, 1999). Applied to the original equations of fluid mass and momentum conservation,

the averaging enables up-scaling so the newly obtained equations describe somewhat homogenized fields of averaged hydrodynamic variables.

Combined time and spatial averaging (known as double-averaging) has been extensively used in the studies of hydraulically rough-bed flows as it explicitly (i) incorporates the effects of form drag and viscous friction in the double-averaged equations, and (ii) accounts for roughness-induced small-scale heterogeneity in turbulent and mean flow fields (e.g. Giménez-Curto & Lera, 1996; Nikora et al., 2007; Nikora, Ballio, Coleman, & Pokrajac, 2013; Nikora, Goring, McEwan, & Griffiths, 2001; Pedras & de Lemos, 2000; Raupach & Shaw, 1982). This

Received 22 January 2018; accepted 23 October 2018/Currently open for discussion.

This article has been republished with minor changes. These changes do not impact the academic content of the article.

ISSN 0022-1686 print/ISSN 1814-2079 online  
<http://www.tandfonline.com>

type of heterogeneity in the instantaneous and time-averaged flow fields is presented in the double-averaged equations as turbulent stresses and form-induced or dispersive stresses (which are second-order velocity moments, e.g. Giménez-Curto & Lera, 1996; Monin & Yaglom, 1971; Raupach & Shaw, 1982). Equations for these fluid stresses, known as second-order equations, represent an important part of the theoretical background underpinning modern studies of turbulent wall-bounded flows.

Time-averaged second-order equations describing the balances of mean energy and turbulent energy (i.e. normal stresses) were originally introduced in the pioneering work of Reynolds (1895). Later they were expanded to also cover shear stresses and have served as a foundation for data interpretation and a variety of turbulence modelling approaches, such as families of  $k$ - $\epsilon$  models and algebraic stress turbulence models (e.g. Monin & Yaglom, 1971; Nezu & Nakagawa, 1993; Rodi, 1984). In the time-averaged second-order equations, the drag forces are accounted for as the boundary conditions rather than included in the equations themselves. Therefore, such equations become unsuitable, in a practical sense, for understanding flows over complex boundaries such as gravel or dune beds in rivers. This limitation stimulated the development of the double-averaged second-order equations where drag forces and their effects appear in the equations explicitly, as a result of spatial averaging (e.g. Brunet, Finnigan, & Raupach, 1994; Katul & Albertson, 1998; Mignot, Barthélemy, & Hurther, 2008, 2009; Pedras & de Lemos, 2001; Raupach & Shaw, 1982; Wilson & Shaw, 1977).

Another important feature that emerges in the double-averaged equations is form-induced stresses, which are co-variances of the deviations of the time-averaged velocities from their double-averaged counterparts, similar to the turbulent stresses which are co-variances of the deviations of the instantaneous velocities from their time-averaged counterparts. Although a few studies highlighting the importance of the form-induced stresses in rough-bed flows have been reported (e.g. Aberle, Koll, & Dittrich, 2008; Coleman, Nikora, McLean, & Schlicke, 2007; Cooper, Aberle, Koll, & Tait, 2013; Manes, Pokrajac, Coceal, & McEwan, 2008; Vowinckel, Nikora, Kempe, & Fröhlich, 2017a, 2017b), little attention has been paid to the balance of the form-induced stresses (normal and shear). Although a form of this balance equation was proposed a few decades ago (Raupach & Shaw, 1982), it has only recently been used for studying roughness effects in open-channel flows (Yuan & Piomelli, 2014).

In general, the double-averaged second-order equations include three types of interlinked equations: (1) balance equations for mean momentum fluxes (or stresses), including mean energy balance, (2) balance equations for spatially-averaged turbulent stresses, including turbulent kinetic energy balance, and (3) balance equations for form-induced stresses, including form-induced kinetic energy balance. The currently available double-averaged second-order equations have been derived

for fixed boundaries and, strictly speaking, cannot be applied if flow boundaries are both complex and mobile; thus, their application to questions related to river beds during floods or vegetation canopies that constantly fluctuate as a result of interaction with turbulent eddies, is limited. Indeed, boundary motion can cause the discontinuity in the near-boundary instantaneous fluid properties within the averaging period, and thus conventional time-averaging and corresponding time-averaged and double-averaged equations need to be modified to account for boundary mobility. All three types of equations (for mean, turbulent, and form-induced stresses) are important as they underpin any consideration of energy fluxes in turbulent flows over complex boundaries, and are therefore required to provide a proper theoretical foundation for dealing with mobile-boundary flows.

In response to this need, the current paper presents the derivation of equations describing the balances of the mean, form-induced, and spatially-averaged turbulent stresses and energies for mobile-boundary flows. As a necessary initial step, the time-averaging operation is refined to account for the rough-bed mobility effect and obtain time-averaged hydrodynamic equations for mobile-boundary flows. Spatial averaging is then applied on the time-averaged equations to obtain the second-order equations for stresses that complement the double-averaged equations of conservation of fluid mass and momentum proposed by Nikora et al. (2013) for mobile-bed conditions. The general approach of Keller and Friedmann (1924; see also Monin & Yaglom, 1971) is followed for the derivation of the equations for the second-order velocity moments for both time-averaged and double-averaged equations.

The paper is structured as follows. Definitions of the averaging operations and the associated quantities of bed porosity (or roughness geometry functions) used in the derivations are presented in Section 2. The local (at a point) time-averaged hydrodynamic equations are given in Section 3, as these are required to obtain the time- and spatially-averaged hydrodynamic equations that are presented in Section 4. An example to illustrate the potential application of the proposed equations, under appropriate simplifying assumptions, is given in Section 5. Conclusions are presented in Section 6. Appendix 1 provides supplementary details on the conditions and theorems that are necessary for averaging operations employed in the derivation process outlined in Appendix 2.

## 2 Background

This Section briefly reviews key definitions of the time- and double-averaging operations for mobile-boundary flows that are used for the derivation of the equations presented in Sections 3 and 4. Additional information on the averaging conditions and theorems is given in Appendix 1, while details regarding the double-averaging methodology as followed here can be found in Nikora et al. (2007, 2013).

2.1 Averaging operators: definitions

We first define the operation of time averaging at a point  $x_i$ . The superficial and intrinsic time averages of a random function  $\theta(x_i, t)$  are defined, respectively, as (Nikora et al., 2013):

$$\bar{\theta}^s(x_i, t) = \frac{1}{T_0} \int_{T_0} \theta(x_i, t + \tau) \gamma(x_i, t + \tau) d\tau \quad (1a)$$

$$\bar{\theta}(x_i, t) = \frac{1}{T_f(x_i, t)} \int_{T_0} \theta(x_i, t + \tau) \gamma(x_i, t + \tau) d\tau \quad (1b)$$

$$\bar{\theta}^s(x_i, t) = \phi_T(x_i, t) \bar{\theta}(x_i, t) \quad (1c)$$

where  $\theta$  is velocity, pressure or any other hydrodynamic variable, overbar denotes the time-averaging operation, superscript  $s$  denotes superficial averaging,  $x_i$  and  $t$  are space and time coordinates,  $\tau$  is a “local” time coordinate used in the integrand,  $\gamma$  is an indicator of the point occupancy by the fluid (i.e.  $\gamma = 1$  when the domain is occupied by the fluid and  $\gamma = 0$  otherwise),  $T_f$  refers to the sum of periods during which a point  $x_i$  is occupied by fluid, and  $T_0$  is the total averaging time ( $T_f \leq T_0$ ). The superficial and intrinsic time averages are linked through the local time porosity  $\phi_T = T_f / T_0$  (Nikora et al., 2013), as expressed by Eq. (1c). Equations (1a)–(1c) enable the operation of time averaging over a time period  $T_0$  even if this period includes time intervals or instants when the point  $x_i$  had not been occupied by the fluid. For brevity, the variable dependence on the space and/or time coordinates is not shown hereafter.

Applying the operators of superficial and intrinsic spatial averaging (Gray & Lee, 1977) on the first and second operators in Eqs (1a) and (1b), respectively, yields:

$$\langle \bar{\theta}^s \rangle^s = \frac{1}{V_0} \int_{V_0} \frac{1}{T_0} \int_{T_0} \theta \gamma dt dV \quad (2a)$$

$$\langle \bar{\theta} \rangle = \frac{1}{V_m} \int_{V_0} \frac{1}{T_f} \int_{T_0} \theta \gamma dt dV \quad (2b)$$

$$\langle \bar{\theta}^s \rangle^s = \phi_{Vm} \langle \phi_T \bar{\theta} \rangle \quad (2c)$$

where the angular brackets denote spatial averaging,  $V_0$  is the total volume of the spatial averaging domain that in general can be subdivided in two subdomains: (1) a subdomain of volume  $V_m$  every point of which has been visited by the fluid, at least once, within the period  $T_0$ , and (2) a subdomain of volume ( $V_0 - V_m$ ) that has not been visited by the fluid within the total averaging time  $T_0$ . The expressions in Eq. (2) correspond to the definitions of superficial and intrinsic double averages given in Nikora et al. (2013). The superficial and intrinsic double averages are linked through a relation  $\langle \bar{\theta}^s \rangle^s = \phi_{Vm} \langle \phi_T \bar{\theta} \rangle$ , where  $\phi_{Vm} = V_m / V_0$  denotes the spatial porosity based on the non-zero  $\bar{\gamma}^s$ . The space-time porosity is defined as  $\phi_{VT} = \phi_{Vm} \langle \phi_T \rangle$  (Nikora et al., 2013).

When applied to the hydrodynamic equations, the operators of Eqs (1) and (2) need to be supplemented by the averaging conditions (known as the Reynolds conditions or rules) and theorems detailed in Appendix 1. The application of the Reynolds conditions requires the selection of an appropriate averaging time and spatial domain. The averaging time  $T_0$  should be much larger than the characteristic time scale of turbulent fluctuations  $\theta' = \theta - \bar{\theta}$  but much smaller than the characteristic time scale of  $\bar{\theta}$ . For example, in rivers  $T_0$  would be much larger than the ratio of the flow depth to the flow velocity (i.e. prevailing turbulent scale) but much smaller than the duration of a flood. Thus, a sufficiently wide separation between these two time scales is required to secure the applicability of Reynolds conditions.

An appropriate shape of the spatial averaging domain is a thin slab parallel to the mean bed, with a vertical size much smaller than the roughness height. The bed-parallel dimensions of the averaging domain should appreciably exceed the roughness length scales along and across the flow but be sufficiently smaller than channel-scale of bed level fluctuations. Applying, e.g., this rule for a gravel-bed river we would define an averaging domain as being much thinner than a bed particle diameter  $d$ , with bed-parallel dimensions being a few times larger than  $d$  but much smaller than a channel width. Similar to time averaging, a wide separation between characteristic roughness scales and the scale of variation of the spatially-averaged value is required for spatial averaging (Eq. (2)) to apply.

2.2 Decomposition of instantaneous and time-averaged variables

Another element for the derivation of the time- and double-averaged second-order equations, in addition to Eqs (1) and (2), is the decomposition of the instantaneous variables  $\theta$  into mean  $\bar{\theta}$  and fluctuating  $\theta'$  quantities, known as the Reynolds decomposition, i.e.  $\theta' = \theta - \bar{\theta}$ . Application of the Reynolds decomposition to the time-averaged momentum flux  $\phi_T \bar{u}_i \bar{u}_k$  ((i) in Eq. (3a)) results in the following expansion:

$$\underbrace{\phi_T \bar{u}_i \bar{u}_k}_{(i)} = \underbrace{\phi_T \bar{u}_i \bar{u}_k}_{(ii)} + \underbrace{\phi_T \bar{u}'_i \bar{u}'_k}_{(iii)} \quad (3a)$$

where quantities (ii) and (iii) represent the contributions of the mean and fluctuating velocity fields to the time-averaged momentum flux, respectively. A spatially-averaged analogue of Eq. (3a) is given as:

$$\underbrace{\phi_{Vm} \langle \phi_T \bar{u}_i \bar{u}_k \rangle}_{(I)} = \underbrace{\phi_{Vm} \langle \phi_T \bar{u}_i \bar{u}_k \rangle}_{(II)} + \underbrace{\phi_{Vm} \langle \phi_T \bar{u}'_i \bar{u}'_k \rangle}_{(III)} \quad (3b)$$

where the meaning of quantities (II) and (III) is similar to terms (ii) and (iii) in Eq. (3a). The relation of Eq. (3a) involves time averaging and no spatial averaging (at least in the framework of the continuum mechanics), while the relation of Eq. (3b) may be viewed as a spatially “upscaled” version of Eq. (3a).

While temporal averaging is sufficient for studying hydraulically smooth-bed flows, consideration of hydraulically rough-bed flows requires spatial averaging and decomposition of a time-averaged quantity  $\bar{\theta}$  into its spatially-averaged value  $\langle \bar{\theta} \rangle$  and a spatial fluctuation  $\tilde{\theta}$ , i.e.  $\bar{\theta} = \langle \bar{\theta} \rangle + \tilde{\theta}$ . The latter relation is known as a modified Reynolds decomposition. Spatial averaging is necessary to cope with the roughness-induced heterogeneity of the time-averaged velocity field, i.e. to make time-averaged heterogeneous fields “smoother”. Using the modified Reynolds decomposition  $\bar{u}_i = \langle \bar{u}_i \rangle + \tilde{u}_i$ , the double-averaged momentum flux  $\phi_{vm} \langle \phi_T \bar{u}_i \bar{u}_k \rangle$  ((II) in Eq. (3b)) may be decomposed as:

$$\begin{aligned} \underbrace{\phi_{vm} \langle \phi_T \bar{u}_i \bar{u}_k \rangle}_{(II)} &= \underbrace{\phi_{vT} \langle \bar{u}_i \rangle \langle \bar{u}_k \rangle}_{(IIA)} + \underbrace{\phi_{vm} \langle \phi_T \tilde{u}_i \tilde{u}_k \rangle}_{(IIB)} \\ &+ \underbrace{\phi_{vm} \langle \phi_T \tilde{u}_i \rangle \langle \bar{u}_k \rangle + \phi_{vm} \langle \phi_T \tilde{u}_k \rangle \langle \bar{u}_i \rangle}_{(IIC)} \end{aligned} \quad (4)$$

where quantities (IIA) and (IIB) represent contributions to the total spatially-averaged momentum flux  $\phi_{vm} \langle \phi_T \bar{u}_i \bar{u}_k \rangle$  from the double-mean ( $\langle \bar{u}_i \rangle$ ) and form-induced ( $\tilde{u}_i$ ) velocity fields, while terms in (IIC) reflect potential contribution of the interrelations between the time porosity  $\phi_T$  and the time-averaged velocity. For convenience, the quantities (IIA), (IIB) and (IIC) are referred to as the double-mean, form-induced, and porosity-correlation stresses (which may be either zero or non-zero), respectively. From Eqs (3b) and (4), a decomposition for the double-averaged kinetic energy  $1/2 \phi_{vm} \langle \phi_T \bar{u}_i \bar{u}_i \rangle$  follows as:

$$\begin{aligned} \frac{1}{2} \underbrace{\phi_{vm} \langle \phi_T \bar{u}_i \bar{u}_i \rangle}_{(I)} &= \frac{1}{2} \underbrace{\phi_{vT} \langle \bar{u}_i \rangle \langle \bar{u}_i \rangle}_{(IIA)} + \frac{1}{2} \underbrace{\phi_{vm} \langle \phi_T \tilde{u}_i \tilde{u}_i \rangle}_{(IIB)} \\ &+ \underbrace{\phi_{vm} \langle \phi_T \tilde{u}_i \rangle \langle \bar{u}_i \rangle}_{(IIC)} + \frac{1}{2} \underbrace{\phi_{vm} \langle \phi_T \bar{u}'_i \bar{u}'_i \rangle}_{(III)} \end{aligned} \quad (5)$$

where repeated indices imply summation.

The balance equations for the local mean and turbulent stresses (quantities ii and iii in Eq. (3a)) as well as for the double-mean, form-induced and spatially-averaged turbulent stresses (quantities IIA + IIC, IIB and III in Eqs (3b) and (4), respectively) are presented in Sections 3 and 4 below. The key steps of their derivation are outlined in Appendix 2. The general approach of Keller and Friedmann (1924; see also Monin & Yaglom, 1971) is followed, starting from the mass and momentum conservation equations.

### 3 First- and second-order time-averaged hydrodynamic equations

The derivation of the time-averaged hydrodynamic equations for a Newtonian fluid starts with consideration of the mass and

momentum conservation equations for instantaneous variables (e.g. Whitaker, 1968), i.e.:

$$\begin{aligned} \frac{\partial \rho}{\partial t} + \frac{\partial \rho u_i}{\partial x_i} &= 0, \\ \frac{\partial \rho u_i}{\partial t} + \frac{\partial \rho u_i u_j}{\partial x_j} &= \rho g_i - \frac{\partial p}{\partial x_i} + \frac{\partial}{\partial x_j} \left( \rho \nu \frac{\partial u_i}{\partial x_j} \right) \end{aligned} \quad (6)$$

where  $\rho$  is fluid mass density,  $\nu$  is fluid kinematic viscosity,  $u_i$  is the  $i$ th component of the velocity vector,  $p$  is fluid pressure, and  $g_i$  is the  $i$ th component of the gravity acceleration. These conservation equations are averaged over time first to obtain the time-averaged mass and momentum conservation equations (i.e. first-order equations), and then the balance equations for the mean and turbulent momentum fluxes (i.e. second-order equations) are derived. The final equations are reported below, while details of their derivation are provided in Appendices 1 and 2.

#### 3.1 Time-averaged mass and momentum conservation equations

Applying the operators of Eq. (1), Reynolds’ conditions of Eq. (A1), the averaging theorems (A5), and accounting for the no-slip condition, one can derive the following time-averaged equations:

$$\frac{\partial \phi_T}{\partial t} + \frac{\partial \phi_T \bar{u}_i}{\partial x_i} = 0 \quad (7)$$

$$\begin{aligned} \underbrace{\frac{\partial \phi_T \bar{u}_i}{\partial t}}_{(1)} + \underbrace{\frac{\partial \phi_T \bar{u}_i \bar{u}_j}{\partial x_j}}_{(2)} &= \underbrace{\phi_T g_i}_{(3)} - \underbrace{\frac{\partial \phi_T \bar{u}'_i \bar{u}'_j}{\partial x_j}}_{(4)} - \underbrace{\frac{1}{\rho} \frac{\partial \phi_T \bar{p}}{\partial x_i}}_{(5)} \\ &+ \underbrace{\frac{\partial}{\partial x_j} \left( \nu \phi_T \frac{\partial \bar{u}_i}{\partial x_j} \right)}_{(6)} + \underbrace{\frac{1}{\rho T_0} \int_{T_0} p n_i \frac{\delta(t-t_s)}{|v_i|} dt}_{(7)} \\ &- \underbrace{\frac{1}{T_0} \int_{T_0} \nu \frac{\partial u_i}{\partial x_j} n_j \frac{\delta(t-t_s)}{|v_j|} dt}_{(8)} \end{aligned} \quad (8)$$

where the Reynolds decomposition  $u_i = \bar{u}_i + u'_i$  is used in the presentation of the time-averaged convective term,  $\delta$  denotes the one-dimensional analogue of the Dirac delta function,  $t_s$  is a “transition” time instant when  $\gamma$  at a given point changes from 0 to 1,  $v_i$  is velocity vector of the fluid–non-fluid interface, and  $n_i$  is a normal unit vector at the interface (directed into the fluid). More details on the variables involved in Eq. (8) are given in Appendix 1. The first and second terms in Eq. (8) are the mean local and convective accelerations, respectively. The third term represents the body force (gravity), with the fourth, fifth and sixth terms expressing the contributions to the time-averaged momentum balance of turbulent stresses, mean

pressure and mean viscous stresses, respectively. The final two terms in Eq. (8) reflect the change of fluid momentum (per unit mass) at the transition time moments (non-fluid to fluid and vice versa) due to the effects of pressure drag and viscous friction at the interface.

The time-averaged continuity Eq. (7) can be expressed as:

$$\frac{\partial \bar{u}_i}{\partial x_i} = -\frac{1}{\phi_T} \left( \frac{\partial \phi_T}{\partial t} + \bar{u}_i \frac{\partial \phi_T}{\partial x_i} \right) \quad (9)$$

Equation (9) suggests that temporal and spatial variations of time porosity  $\phi_T$  can cause non-zero strain rate  $\partial \bar{u}_i / \partial x_i$ , differently from the conventional time-averaged continuity equation where this strain rate is identically zero.

### 3.2 Time-averaged conservation equations for mean and turbulent momentum fluxes

The equations for the mean  $\bar{u}_i \bar{u}_k$  and turbulent momentum fluxes  $\overline{u'_i u'_k}$  can be derived from the instantaneous and time-averaged forms of the mass and momentum conservation equations, as outlined in Appendix 2. The equation for the mean stress  $\bar{u}_i \bar{u}_k$  is obtained as:

$$\begin{aligned} & \underbrace{\frac{\partial \phi_T \bar{u}_i \bar{u}_k}{\partial t}}_{(1)} + \underbrace{\frac{\partial \phi_T \bar{u}_i \bar{u}_k \bar{u}_j}{\partial x_j}}_{(2)} = \underbrace{\phi_T (\bar{u}_k g_i + \bar{u}_i g_k)}_{(3)} \\ & - \underbrace{\frac{\partial}{\partial x_j} (\phi_T \bar{u}_k \overline{u'_i u'_j} + \phi_T \bar{u}_i \overline{u'_k u'_j})}_{(4)} \\ & - \underbrace{\frac{1}{\rho} \frac{\partial}{\partial x_j} (\phi_T \bar{u}_k \bar{p} \delta_{ij} + \phi_T \bar{u}_i \bar{p} \delta_{kj})}_{(5)} \\ & + \underbrace{v \frac{\partial}{\partial x_j} \left( \phi_T \bar{u}_k \frac{\partial \bar{u}_i}{\partial x_j} + \phi_T \bar{u}_i \frac{\partial \bar{u}_k}{\partial x_j} \right)}_{(6)} \\ & + \underbrace{\left( \phi_T \overline{u'_i u'_j} \frac{\partial \bar{u}_k}{\partial x_j} + \phi_T \overline{u'_k u'_j} \frac{\partial \bar{u}_i}{\partial x_j} \right)}_{(7)} + \underbrace{\frac{\phi_T \bar{p}}{\rho} \left( \frac{\partial \bar{u}_k}{\partial x_i} + \frac{\partial \bar{u}_i}{\partial x_k} \right)}_{(8)} \\ & - \underbrace{v \left( \phi_T \frac{\partial \bar{u}_i}{\partial x_j} \frac{\partial \bar{u}_k}{\partial x_j} + \phi_T \frac{\partial \bar{u}_k}{\partial x_j} \frac{\partial \bar{u}_i}{\partial x_j} \right)}_{(9)} \\ & + \underbrace{\frac{1}{\rho T_0} \int_{T_0} (\bar{u}_k p \delta_{ij} + \bar{u}_i p \delta_{kj}) n_j \frac{\delta(t-t_s)}{|v_j|} dt}_{(10)} \\ & - \underbrace{\frac{1}{T_0} \int_{T_0} v \left( \bar{u}_k \frac{\partial u_i}{\partial x_j} + \bar{u}_i \frac{\partial u_k}{\partial x_j} \right) n_j \frac{\delta(t-t_s)}{|v_j|} dt}_{(11)} \end{aligned} \quad (10)$$

Terms 1 and 2 in Eq. (10) represent the time rate of change of the mean stresses, term 3 is a source term due to gravity, and terms 4, 5 and 6 are transport terms related to turbulent stresses, mean pressure and mean viscous stresses, respectively. Term 7 is conventionally interpreted as turbulence production due to the work of turbulent stresses against mean velocity gradients. Terms 8 and 9 express redistributive (i.e. inter-component transfer of energy) and dissipative effects, respectively. Terms 10 and 11 are source/sink terms associated with the flow interruption by non-fluid inclusions due to boundary mobility. The balance equation for the mean energy  $1/2 \bar{u}_i \bar{u}_i$  can be obtained from Eq. (10) by imposing  $i = k$ , i.e.:

$$\begin{aligned} & \underbrace{\frac{1}{2} \frac{\partial \phi_T \bar{u}_i \bar{u}_i}{\partial t}}_{(1)} + \underbrace{\frac{1}{2} \frac{\partial \phi_T \bar{u}_i \bar{u}_i \bar{u}_j}{\partial x_j}}_{(2)} = \underbrace{\phi_T \bar{u}_i g_i}_{(3)} - \underbrace{\frac{\partial \phi_T \bar{u}_i \overline{u'_i u'_j}}{\partial x_j}}_{(4)} \\ & - \underbrace{\frac{1}{\rho} \frac{\partial \phi_T \bar{u}_i \bar{p}}{\partial x_i}}_{(5)} + \underbrace{v \frac{\partial}{\partial x_j} \left( \phi_T \bar{u}_i \frac{\partial \bar{u}_i}{\partial x_j} \right)}_{(6)} + \underbrace{\phi_T \overline{u'_i u'_j} \frac{\partial \bar{u}_i}{\partial x_j}}_{(7)} \\ & + \underbrace{\frac{\phi_T \bar{p}}{\rho} \frac{\partial \bar{u}_i}{\partial x_i}}_{(8)} - \underbrace{v \phi_T \frac{\partial \bar{u}_i}{\partial x_j} \frac{\partial \bar{u}_i}{\partial x_j}}_{(9)} + \underbrace{\frac{1}{\rho T_0} \int_{T_0} \bar{u}_i p n_i \frac{\delta(t-t_s)}{|v_j|} dt}_{(10)} \\ & - \underbrace{\frac{1}{T_0} \int_{T_0} v \bar{u}_i \frac{\partial u_i}{\partial x_j} n_j \frac{\delta(t-t_s)}{|v_j|} dt}_{(11)} \end{aligned} \quad (11)$$

Terms 1 and 2 in Eq. (10) represent the local and convective time rate of change of the mean energy; terms 3, 4, 5 and 6 represent the work rates of gravity, turbulent stresses, mean pressure and mean viscous stresses on the mean flow, respectively; terms 7, 8 and 9 represent the work of turbulent stresses, mean pressure and mean viscous stresses against the mean strain-rate, respectively. Conventionally, the seventh term is interpreted as mean energy exchange between mean flow and turbulence while the ninth term describes conversion of mechanical energy into heat. Terms 10 and 11 represent the gain or loss of mean energy at the transition time moments due to the boundary mobility.

The equation for the turbulent stress  $\overline{u'_i u'_k}$  can be obtained by subtracting the equation for  $\bar{u}_i \bar{u}_k$  from the equation for the total stress  $\bar{u}_i \bar{u}_k$  (Appendix 2). The result can be written as:

$$\begin{aligned} & \underbrace{\frac{\partial \phi_T \overline{u'_i u'_k}}{\partial t}}_{(1)} + \underbrace{\frac{\partial \phi_T \overline{u'_i u'_k} \bar{u}_j}{\partial x_j}}_{(2)} \\ & = - \underbrace{\left( \phi_T \overline{u'_i u'_j} \frac{\partial \bar{u}_k}{\partial x_j} + \phi_T \overline{u'_k u'_j} \frac{\partial \bar{u}_i}{\partial x_j} \right)}_{(3)} - \underbrace{\frac{\partial \phi_T \overline{u'_i u'_k u'_j}}{\partial x_j}}_{(4)} \end{aligned}$$

$$\begin{aligned}
 & - \underbrace{\frac{1}{\rho} \frac{\partial}{\partial x_j} (\phi_T \overline{u'_k p'} \delta_{ij} + \phi_T \overline{u'_i p'} \delta_{kj})}_{(5)} \\
 & + \underbrace{v \frac{\partial}{\partial x_j} \left( \phi_T \overline{u'_k} \frac{\partial u'_i}{\partial x_j} + \phi_T \overline{u'_i} \frac{\partial u'_k}{\partial x_j} \right)}_{(6)} + \underbrace{\frac{\phi_T}{\rho} \overline{p'} \left( \frac{\partial u'_k}{\partial x_i} + \frac{\partial u'_i}{\partial x_k} \right)}_{(7)} \\
 & - \underbrace{2v \phi_T \frac{\partial u'_i}{\partial x_j} \frac{\partial u'_k}{\partial x_j}}_{(8)} + \underbrace{\frac{1}{\rho T_0} \int_{T_0} (u'_k p \delta_{ij} + u'_i p \delta_{kj}) n_j \frac{\delta(t-t_s)}{|v_j|} dt}_{(9)} \\
 & - \underbrace{\frac{1}{T_0} \int_{T_0} v \left( u'_k \frac{\partial u_i}{\partial x_j} + u'_i \frac{\partial u_k}{\partial x_j} \right) n_j \frac{\delta(t-t_s)}{|v_j|} dt}_{(10)} \quad (12)
 \end{aligned}$$

Terms 1 and 2 in Eq. (12) correspond to the time rate of change of turbulent stresses, term 3 is the turbulent stress generation, and terms 4, 5 and 6 represent the transport by the fluctuating velocity, pressure and viscous stresses, respectively. Term 7 describes the stress redistribution by pressure fluctuations, term 8 is responsible for dissipative effects, and terms 9 and 10 are source/sink terms associated with the flow intermittency, i.e. intermittent occupation of a point under consideration by non-fluid matter (e.g. moving gravel particles or fluctuating aquatic plants). The equation for the turbulent energy  $\frac{1}{2} \overline{u'_i u'_i}$  is obtained from Eq. (12) as follows:

$$\begin{aligned}
 & \underbrace{\frac{1}{2} \frac{\partial \phi_T \overline{u'_i u'_i}}{\partial t}}_{(1)} + \underbrace{\frac{1}{2} \frac{\partial \phi_T \overline{u'_i u'_i} \bar{u}_j}{\partial x_j}}_{(2)} = - \underbrace{\phi_T \overline{u'_i u'_j} \frac{\partial \bar{u}_i}{\partial x_j}}_{(3)} \\
 & - \underbrace{\frac{1}{2} \frac{\partial \phi_T \overline{u'_i u'_i u'_j}}{\partial x_j}}_{(4)} - \underbrace{\frac{1}{\rho} \frac{\partial \phi_T \overline{u'_i p'}}{\partial x_i}}_{(5)} + \underbrace{v \frac{\partial}{\partial x_j} \left( \phi_T \overline{u'_i} \frac{\partial u'_i}{\partial x_j} \right)}_{(6)} \\
 & + \underbrace{\frac{\phi_T}{\rho} \overline{p'} \frac{\partial u'_i}{\partial x_i}}_{(7)} - \underbrace{2v \phi_T \frac{\partial u'_i}{\partial x_j} \frac{\partial u'_i}{\partial x_j}}_{(8)} + \underbrace{\frac{1}{\rho T_0} \int_{T_0} u'_i p n_i \frac{\delta(t-t_s)}{|v_i|} dt}_{(9)} \\
 & - \underbrace{\frac{1}{T_0} \int_{T_0} v u'_i \frac{\partial u_i}{\partial x_j} n_j \frac{\delta(t-t_s)}{|v_j|} dt}_{(10)} \quad (13)
 \end{aligned}$$

In Eq. (13), terms 1 and 2 represent the rate of change of turbulent energy, term 3 represents the work of turbulent stresses against the mean strain rate, interpreted as the conversion of the mean energy to turbulence energy (or vice versa), term 4 describes the turbulent convection and terms 5 and 6 represent the mean work rate of the turbulent pressure and viscous stresses on the turbulent fluctuations, respectively. Terms 7 and 8 denote the mean work of turbulent pressure and viscous stresses against the turbulent strain rate. Terms 9 and 10 express the mean gain

or loss of the turbulence energy at the transition time moments (i.e. energy transfer to the boundary or vice versa). The intrinsic forms of Eqs (8) and (10)–(13) can be obtained by applying Leibniz’s product rule on the left-hand side terms and then dividing the equations by  $\phi_T$ . For brevity, these are not presented in this paper.

The effects of moving flow boundaries and the associated flow intermittency are expressed in the time-averaged equations through the time porosity and the two source/sink terms that appear at the end of Eqs (8) and (10)–(13). Note that due to Eq. (9), the work of pressure on mean and turbulent strain-rates, i.e. term 8 in Eq. (11) and term 7 in Eq. (13), are retained, whereas for the case of immobile boundary these two terms are zero. The time-averaged equations for flows over mobile boundaries can be used directly or they can underpin the development of the double-averaged equations, as outlined in Appendix 2 and summarized in the following section.

#### 4 Double-averaged hydrodynamic equations

Time-averaged hydrodynamic equations involve no spatial averaging and thus relate to local (at a point) quantities. As detailed in the introduction, their application for describing flows over complex and mobile boundaries, like gravel beds during floods, is impractical, so a second averaging step, in the spatial domain, is needed. This step may be viewed as a homogenization procedure that upscales flow variables from a “point scale” where they are highly heterogeneous to a larger scale where their behaviour is much smoother (e.g. Nikora et al., 2013).

The equations for the second-order velocity moments, i.e. quantities (IIA), (IIB) and (III) in Eqs (3b) and (4), are needed in order to identify the key mechanisms affecting the double-mean, form-induced and turbulent stresses and their interrelations with the boundary motion. The derivation of the double-averaged second-order equations utilizes the original mass and momentum conservation equations (Eq. (6)), their time-averaged forms (summarized in Section 3, Eqs (7) and (8)), and double-averaged forms (Nikora et al., 2013). To complement Eqs (6)–(8), the double-averaged mass and momentum conservation equations are summarized in Section 4.1. The second-order double-averaged equations (for momentum fluxes) are presented in Section 4.2, with key steps in their derivation outlined in Appendix 2.

##### 4.1 Double-averaged continuity and momentum equations

The double-averaged forms of the mass and momentum conservation equations for mobile-bed conditions can be expressed as:

$$\frac{\partial \phi_{VT}}{\partial t} + \frac{\partial \phi_{Vm} \langle \phi_T \bar{u}_i \rangle}{\partial x_i} = 0 \quad (14)$$

$$\begin{aligned}
 & \underbrace{\frac{\partial \phi_{Vm} \langle \phi_T \bar{u}_i \rangle}{\partial t}}_{(1)} + \underbrace{\frac{\partial \phi_{Vm} \langle \phi_T \bar{u}_i \rangle \langle \bar{u}_j \rangle}{\partial x_j}}_{(2)} = \underbrace{\phi_{VT} g_i}_{(3)} - \underbrace{\frac{\partial \phi_{Vm} \langle \phi_T \bar{u}'_i u'_j \rangle}{\partial x_j}}_{(4)} \\
 & - \underbrace{\frac{\partial \phi_{Vm} \langle \phi_T \bar{u}_i \bar{u}_j \rangle}{\partial x_j}}_{(5)} - \underbrace{\frac{\partial \phi_{Vm} \langle \phi_T \bar{u}_j \rangle \langle \bar{u}_i \rangle}{\partial x_j}}_{(6)} \\
 & - \underbrace{\frac{1}{\rho} \frac{\partial \phi_{Vm} \langle \phi_T \bar{p} \rangle}{\partial x_i}}_{(7)} + \underbrace{\frac{\partial}{\partial x_j} \left( v \phi_{Vm} \left\langle \phi_T \frac{\partial u_i}{\partial x_j} \right\rangle \right)}_{(8)} \\
 & + \underbrace{\frac{1}{\rho V_0} \int_{S_{int}} p n_i dS}_{(9)} - \underbrace{\frac{1}{V_0} \int_{S_{int}} v \frac{\partial u_i}{\partial x_j} n_j dS}_{(10)} \quad (15)
 \end{aligned}$$

where all variables have been defined in the previous sections. Equation (14) is a double-averaged counterpart of the left-side relation in Eq. (6) or, equivalently, a spatially-averaged form of Eq. (7).

Terms 1 and 2 in Eq. (15) represent the local and convective parts of the double-averaged acceleration, term 3 represents the body force (gravity), and terms 4, 5 and 6 reflect the contributions of the turbulent, form-induced and mobility-induced stresses, respectively. Terms 7 and 8 express the effects of the double-averaged pressure and viscous stresses, while terms 9 and 10 are the mean pressure drag and viscous friction terms, respectively (Nikora et al., 2013).

#### 4.2 Double-averaged equations for the second-order velocity moments

##### Double-mean stresses

The balance equation for the double-mean stress  $\phi_{VT} \langle \bar{u}_i \rangle \langle \bar{u}_k \rangle$  and the associated porosity correlation contribution  $\phi_{Vm} \langle \phi_T \bar{u}_i \rangle \langle \bar{u}_k \rangle + \phi_{Vm} \langle \phi_T \bar{u}_k \rangle \langle \bar{u}_i \rangle$  is derived using the double-averaged mass and momentum conservation equations together with the identity (B5) that expands the partial time derivatives of  $\phi_{VT} \langle \bar{u}_i \rangle \langle \bar{u}_k \rangle$  and  $\phi_{Vm} \langle \phi_T \bar{u}_i \rangle \langle \bar{u}_k \rangle + \phi_{Vm} \langle \phi_T \bar{u}_k \rangle \langle \bar{u}_i \rangle$  (quantities (IIA) and (IIC) in Eq. (5) and Eq. (B5) in Appendix 2), i.e.:

$$\begin{aligned}
 & \underbrace{\frac{\partial}{\partial t} (\phi_{VT} \langle \bar{u}_i \rangle \langle \bar{u}_k \rangle)}_{(1)} + \underbrace{\frac{\partial}{\partial x_j} (\phi_{VT} \langle \bar{u}_i \rangle \langle \bar{u}_k \rangle \langle \bar{u}_j \rangle)}_{(2)} \\
 & + \underbrace{\frac{\partial}{\partial t} (\phi_{Vm} \langle \phi_T \bar{u}_i \rangle \langle \bar{u}_k \rangle + \phi_{Vm} \langle \phi_T \bar{u}_k \rangle \langle \bar{u}_i \rangle)}_{(3)} \\
 & + \underbrace{\frac{\partial}{\partial x_j} \{ (\phi_{Vm} \langle \phi_T \bar{u}_i \rangle \langle \bar{u}_k \rangle + \phi_{Vm} \langle \phi_T \bar{u}_k \rangle \langle \bar{u}_i \rangle) \langle \bar{u}_j \rangle \}}_{(4)}
 \end{aligned}$$

$$\begin{aligned}
 & - \underbrace{\left( \phi_{Vm} \langle \phi_T \bar{u}_i \rangle \frac{\partial \langle \bar{u}_k \rangle}{\partial t} + \phi_{Vm} \langle \phi_T \bar{u}_k \rangle \frac{\partial \langle \bar{u}_i \rangle}{\partial t} \right)}_{(5)} \\
 & = \underbrace{\phi_{VT} (\langle \bar{u}_k \rangle g_i + \langle \bar{u}_i \rangle g_k)}_{(6)} \\
 & - \underbrace{\frac{\partial}{\partial x_j} (\phi_{Vm} \langle \phi_T \bar{u}'_i u'_j \rangle \langle \bar{u}_k \rangle + \phi_{Vm} \langle \phi_T \bar{u}'_k u'_j \rangle \langle \bar{u}_i \rangle)}_{(7)} \\
 & - \underbrace{\frac{\partial}{\partial x_j} (\phi_{Vm} \langle \phi_T \bar{u}_i \bar{u}_j \rangle \langle \bar{u}_k \rangle + \phi_{Vm} \langle \phi_T \bar{u}_k \bar{u}_j \rangle \langle \bar{u}_i \rangle)}_{(8)} \\
 & - \underbrace{\frac{\partial}{\partial x_j} (\phi_{Vm} \langle \phi_T \bar{u}_j \rangle \langle \bar{u}_i \rangle \langle \bar{u}_k \rangle)}_{(9)} \\
 & - \underbrace{\frac{1}{\rho} \frac{\partial}{\partial x_j} (\phi_{Vm} \langle \phi_T \bar{p} \rangle \langle \bar{u}_k \rangle \delta_{ij} + \phi_{Vm} \langle \phi_T \bar{p} \rangle \langle \bar{u}_i \rangle \delta_{kj})}_{(10)} \\
 & + \underbrace{v \frac{\partial}{\partial x_j} \left( \phi_{Vm} \left\langle \phi_T \frac{\partial u_i}{\partial x_j} \right\rangle \langle \bar{u}_k \rangle + \phi_{Vm} \left\langle \phi_T \frac{\partial u_k}{\partial x_j} \right\rangle \langle \bar{u}_i \rangle \right)}_{(11)} \\
 & + \underbrace{\left( \phi_{Vm} \langle \phi_T \bar{u}'_i u'_j \rangle \frac{\partial \langle \bar{u}_k \rangle}{\partial x_j} + \phi_{Vm} \langle \phi_T \bar{u}'_k u'_j \rangle \frac{\partial \langle \bar{u}_i \rangle}{\partial x_j} \right)}_{(12)} \\
 & + \underbrace{\left( \phi_{Vm} \langle \phi_T \bar{u}_i \bar{u}_j \rangle \frac{\partial \langle \bar{u}_k \rangle}{\partial x_j} + \phi_{Vm} \langle \phi_T \bar{u}_k \bar{u}_j \rangle \frac{\partial \langle \bar{u}_i \rangle}{\partial x_j} \right)}_{(13)} \\
 & + \underbrace{\left( \phi_{Vm} \langle \phi_T \bar{u}_i \rangle \langle \bar{u}_j \rangle \frac{\partial \langle \bar{u}_k \rangle}{\partial x_j} + \phi_{Vm} \langle \phi_T \bar{u}_k \rangle \langle \bar{u}_j \rangle \frac{\partial \langle \bar{u}_i \rangle}{\partial x_j} \right)}_{(14)} \\
 & + \underbrace{\frac{\phi_{Vm} \langle \phi_T \bar{p} \rangle}{\rho} \left( \frac{\partial \langle \bar{u}_k \rangle}{\partial x_i} + \frac{\partial \langle \bar{u}_i \rangle}{\partial x_k} \right)}_{(15)} \\
 & - \underbrace{v \left( \phi_{Vm} \left\langle \phi_T \frac{\partial u_i}{\partial x_j} \right\rangle \frac{\partial \langle \bar{u}_k \rangle}{\partial x_j} + \phi_{Vm} \left\langle \phi_T \frac{\partial u_k}{\partial x_j} \right\rangle \frac{\partial \langle \bar{u}_i \rangle}{\partial x_j} \right)}_{(16)} \\
 & + \underbrace{\left( \frac{1}{\rho V_0} \int_{S_{int}} ((\bar{u}_k) p n_i + \langle \bar{u}_i \rangle p n_k) dS \right)}_{(17)} \\
 & - \underbrace{\left( \frac{1}{V_0} \int_{S_{int}} v \left( \langle \bar{u}_k \rangle \frac{\partial u_i}{\partial x_j} + \langle \bar{u}_i \rangle \frac{\partial u_k}{\partial x_j} \right) n_j dS \right)}_{(18)} \quad (16)
 \end{aligned}$$

Terms 1 and 2 in Eq. (16) represent the time rate of change of the double-mean stresses while terms 3 and 4 quantify the rate of



change of the porosity-correlation stresses. Terms 5, 13 and 14 occur in both balance equations, for double-mean stresses (Eq. (16)) and for the form-induced stresses (Eq. (18) below, terms 3, 5, and 6, respectively), but with opposite signs. Thus, these terms express the energy exchanges between these two energy balances. Term 6 represents the effect of gravity. Terms 7, 8 and 9 describe the transport of turbulent, form-induced and mobility-induced stresses, while terms 10 and 11 are the pressure and viscous transport terms. Term 12 is present in both Eq. (16) and in the balance of the spatially-averaged turbulent stresses (Eq. (20)) with opposite signs. For this reason, term 12 is interpreted as a “bridge” for energy exchanges between mean and turbulent flow fields. Term 15 reflects the effect of the pressure acting on the strain rates, while term 16 quantifies the viscous dissipation. The interfacial source/sinks of mean stresses are expressed by terms 17 and 18.

The equation for the double-mean energy  $\frac{1}{2}\langle\bar{u}_i\rangle\langle\bar{u}_i\rangle$  is obtained from Eq. (16) by choosing  $i = k$ , i.e.:

$$\begin{aligned}
 & \underbrace{\frac{1}{2} \frac{\partial \phi_{VT} \langle \bar{u}_i \rangle \langle \bar{u}_i \rangle}{\partial t}}_{(1)} + \underbrace{\frac{1}{2} \frac{\partial \phi_{VT} \langle \bar{u}_i \rangle \langle \bar{u}_j \rangle}{\partial x_j}}_{(2)} + \underbrace{\frac{\partial}{\partial t} (\phi_{Vm} \langle \phi_T \bar{u}_i \rangle \langle \bar{u}_i \rangle)}_{(3)} \\
 & + \underbrace{\frac{\partial}{\partial x_j} (\phi_{Vm} \langle \phi_T \bar{u}_i \rangle \langle \bar{u}_j \rangle)}_{(4)} - \underbrace{\left( \phi_{Vm} \langle \phi_T \bar{u}_i \rangle \frac{\partial \langle \bar{u}_i \rangle}{\partial t} \right)}_{(5)} = \underbrace{\phi_{VT} \langle \bar{u}_i \rangle g_i}_{(6)} \\
 & - \underbrace{\frac{\partial}{\partial x_j} (\phi_{Vm} \langle \phi_T \bar{u}'_i \bar{u}'_j \rangle \langle \bar{u}_i \rangle)}_{(7)} - \underbrace{\frac{\partial}{\partial x_j} (\phi_{Vm} \langle \phi_T \bar{u}_i \bar{u}_j \rangle \langle \bar{u}_i \rangle)}_{(8)} \\
 & - \underbrace{\frac{1}{2} \frac{\partial \phi_{Vm} \langle \phi_T \bar{u}_j \rangle \langle \bar{u}_i \rangle \langle \bar{u}_i \rangle}{\partial x_j}}_{(9)} \\
 & - \underbrace{\frac{1}{\rho} \frac{\partial}{\partial x_i} (\phi_{Vm} \langle \phi_T \bar{p} \rangle \langle \bar{u}_i \rangle)}_{(10)} + \underbrace{v \frac{\partial}{\partial x_j} \left( \phi_{Vm} \left\langle \phi_T \frac{\partial \bar{u}_i}{\partial x_j} \right\rangle \langle \bar{u}_i \rangle \right)}_{(11)} \\
 & + \underbrace{\phi_{Vm} \langle \phi_T \bar{u}'_i \bar{u}'_j \rangle \frac{\partial \langle \bar{u}_i \rangle}{\partial x_j}}_{(12)} + \underbrace{\phi_{Vm} \langle \phi_T \bar{u}_i \bar{u}_j \rangle \frac{\partial \langle \bar{u}_i \rangle}{\partial x_j}}_{(13)} \\
 & + \underbrace{\phi_{Vm} \langle \phi_T \bar{u}_i \rangle \langle \bar{u}_j \rangle \frac{\partial \langle \bar{u}_i \rangle}{\partial x_j}}_{(14)} \\
 & + \underbrace{\frac{\phi_{Vm} \langle \phi_T \bar{p} \rangle}{\rho} \frac{\partial \langle \bar{u}_i \rangle}{\partial x_i}}_{(15)} - \underbrace{v \phi_{Vm} \left\langle \phi_T \frac{\partial \bar{u}_i}{\partial x_j} \right\rangle \frac{\partial \langle \bar{u}_i \rangle}{\partial x_j}}_{(16)} \\
 & + \underbrace{\frac{\langle \bar{u}_i \rangle}{\rho V_0} \int_{S_{int}} p n_i dS}_{(17)} - \underbrace{\frac{\langle \bar{u}_i \rangle}{V_0} \int_{S_{int}} v \frac{\partial u_i}{\partial x_j} n_j dS}_{(18)} \tag{17}
 \end{aligned}$$

Terms 1 and 2 in Eq. (17) are the local and convective time rates of change of  $\frac{1}{2}\langle\bar{u}_i\rangle\langle\bar{u}_i\rangle$ , with terms 3 and 4 representing the effects of the local and the convective parts of the porosity-correlation. Term 5 defines an energy exchange with the balance of the form-induced energy (Eq. (20)). Term 6 describes the energy supply from the potential energy of gravity, while terms 7, 8, 10 and 11 represent the work of turbulent and form-induced stresses, double-averaged pressure and double-averaged viscous stresses on the double-averaged velocity field, respectively. Term 9 represents the spatial transfer of the double-mean energy  $\frac{1}{2}\langle\bar{u}_i\rangle\langle\bar{u}_i\rangle$  by the form-induced flow and it is associated with the boundary mobility, i.e. with potentially non-zero porosity-velocity correlation. Terms 12, 13, 14, 15 and 16 relate to the work of the spatially-averaged turbulent, form-induced, and porosity-correlation stresses, double-averaged pressure, and double-averaged viscous stresses on the double-mean strain rate, respectively. Finally, terms 17 and 18 define the work of mean pressure drag and viscous friction at the fluid–non-fluid interfaces on the double-mean flow.

*Form-induced stresses*

By subtracting Eq. (16) from the equation for the spatially-averaged mean stresses  $\phi_{Vm} \langle \phi_T \bar{u}_i \bar{u}_k \rangle$  (following Eq. (4) and Eq. (B6) in Appendix 2), the equation for the form-induced stresses can be derived as:

$$\begin{aligned}
 & \underbrace{\frac{\partial \phi_{Vm} \langle \phi_T \bar{u}_i \bar{u}_k \rangle}{\partial t}}_{(1)} + \underbrace{\frac{\partial \phi_{Vm} \langle \phi_T \bar{u}_i \bar{u}_k \rangle \langle \bar{u}_j \rangle}{\partial x_j}}_{(2)} \\
 & + \underbrace{\left( \phi_{Vm} \langle \phi_T \bar{u}_i \rangle \frac{\partial \langle \bar{u}_k \rangle}{\partial t} + \phi_{Vm} \langle \phi_T \bar{u}_k \rangle \frac{\partial \langle \bar{u}_i \rangle}{\partial t} \right)}_{(3)} \\
 & = \underbrace{\phi_{Vm} \langle \phi_T \bar{u}_k \rangle g_i + \phi_{Vm} \langle \phi_T \bar{u}_i \rangle g_k}_{(4)} \\
 & - \underbrace{\left( \phi_{Vm} \langle \phi_T \bar{u}_i \bar{u}_j \rangle \frac{\partial \langle \bar{u}_k \rangle}{\partial x_j} + \phi_{Vm} \langle \phi_T \bar{u}_k \bar{u}_j \rangle \frac{\partial \langle \bar{u}_i \rangle}{\partial x_j} \right)}_{(5)} \\
 & - \underbrace{\left( \phi_{Vm} \langle \phi_T \bar{u}_i \rangle \langle \bar{u}_j \rangle \frac{\partial \langle \bar{u}_k \rangle}{\partial x_j} + \phi_{Vm} \langle \phi_T \bar{u}_k \rangle \langle \bar{u}_j \rangle \frac{\partial \langle \bar{u}_i \rangle}{\partial x_j} \right)}_{(6)} \\
 & - \underbrace{\frac{\partial \phi_{Vm} \langle \phi_T \bar{u}_i \bar{u}_k \bar{u}_j \rangle}{\partial x_j}}_{(7)} \\
 & - \underbrace{\frac{\partial}{\partial x_j} (\phi_{Vm} \langle \phi_T \bar{u}'_i \bar{u}'_j \bar{u}_k + \phi_T \bar{u}'_k \bar{u}'_j \bar{u}_i \rangle)}_{(8)} \\
 & - \underbrace{\frac{1}{\rho} \frac{\partial}{\partial x_j} (\phi_{Vm} \langle \phi_T \bar{p} \bar{u}_k \delta_{ij} + \phi_T \bar{p} \bar{u}_i \delta_{kj} \rangle)}_{(9)}
 \end{aligned}$$

$$\begin{aligned}
 & + v \frac{\partial}{\partial x_j} \left\{ \underbrace{\phi_{Vm} \left\langle \phi_T \frac{\partial \bar{u}_i}{\partial x_j} \bar{u}_k + \phi_T \frac{\partial \bar{u}_k}{\partial x_j} \bar{u}_i \right\rangle}_{(10)} \right\} \\
 & + \underbrace{\phi_{Vm} \left\langle \phi_T \bar{u}'_i \bar{u}'_j \frac{\partial \bar{u}_k}{\partial x_j} + \phi_T \bar{u}'_k \bar{u}'_j \frac{\partial \bar{u}_i}{\partial x_j} \right\rangle}_{(11)} \\
 & + \frac{\phi_{Vm}}{\rho} \left\langle \phi_T \bar{p} \left( \frac{\partial \bar{u}_k}{\partial x_i} + \frac{\partial \bar{u}_i}{\partial x_k} \right) \right\rangle_{(12)} \\
 & - v \underbrace{\phi_{Vm} \left\langle \phi_T \frac{\partial \bar{u}_i}{\partial x_j} \frac{\partial \bar{u}_k}{\partial x_j} + \phi_T \frac{\partial \bar{u}_k}{\partial x_j} \frac{\partial \bar{u}_i}{\partial x_j} \right\rangle}_{(13)} \\
 & + \frac{1}{\rho V_o} \int \underbrace{(\bar{u}_k p n_i + \bar{u}_i p n_k) dS}_{(14)} \\
 & - \frac{1}{V_o} \int_{S_{int}} \underbrace{v \left( \bar{u}_k \frac{\partial u_i}{\partial x_j} + \bar{u}_i \frac{\partial u_k}{\partial x_j} \right) n_j dS}_{(15)} \tag{18}
 \end{aligned}$$

Terms 1 and 2 in Eq. (18) represent the rate of change of the form-induced stresses  $\phi_{Vm} \langle \phi_T \bar{u}_i \bar{u}_k \rangle$ . Term 3 of Eq. (18) also appears in Eq. (16) as term 5, but with an opposite sign, as mentioned in relation to Eq. (16). For this reason, it is interpreted as a mobility-induced cross-energy exchange between balances in Eqs (18) and (16). Term 3 may not be zero if there is a spatial correlation between a form-induced velocity  $\bar{u}_i$  and time porosity  $\phi_T$ . Likewise, terms 5 and 6 represent the covariance exchange between double-mean and form-induced balances of Eqs (18) and (16). Term 4 shows that the potential energy of gravity may be directly supplied to the form-induced stress balance, as in the double-mean energy balance in Eq. (17), if  $\langle \phi_T \bar{u}_k \rangle > 0$ . Terms 7, 8, 9 and 10 represent the form-induced, turbulent, pressure, and viscous transport effects, respectively. Terms 11, 12 and 13 express the action of turbulent stresses, pressure, and viscous stresses on the form-induced strain-rate, respectively. Terms 14 and 15 are source/sink terms associated with the pressure drag and viscous stresses on the interfacial surface. The balance of the form-induced energy  $1/2 \phi_{Vm} \langle \phi_T \bar{u}_i \bar{u}_i \rangle$  is obtained from Eq. (18) by taking  $i = k$ , i.e.:

$$\begin{aligned}
 & \frac{1}{2} \frac{\partial \phi_{Vm} \langle \phi_T \bar{u}_i \bar{u}_i \rangle}{\partial t} + \frac{1}{2} \frac{\partial \phi_{Vm} \langle \phi_T \bar{u}_i \bar{u}_i \rangle \langle \bar{u}_j \rangle}{\partial x_j} + \underbrace{\phi_{Vm} \langle \phi_T \bar{u}_i \rangle \frac{\partial \langle \bar{u}_i \rangle}{\partial t}}_{(3)} \\
 & = \underbrace{\phi_{Vm} \langle \phi_T \bar{u}_i \rangle g_i}_{(4)} - \underbrace{\phi_{Vm} \langle \phi_T \bar{u}_i \bar{u}_j \rangle \frac{\partial \langle \bar{u}_i \rangle}{\partial x_j}}_{(5)}
 \end{aligned}$$

$$\begin{aligned}
 & - \underbrace{\phi_{Vm} \langle \phi_T \bar{u}_i \rangle \langle \bar{u}_j \rangle \frac{\partial \langle \bar{u}_i \rangle}{\partial x_j}}_{(6)} - \frac{1}{2} \frac{\partial \phi_{Vm} \langle \phi_T \bar{u}_i \bar{u}_i \bar{u}_j \rangle}{\partial x_j} \tag{7} \\
 & - \frac{\partial \phi_{Vm} \langle \phi_T \bar{u}'_i \bar{u}'_j \bar{u}_i \rangle}{\partial x_j} - \frac{1}{\rho} \frac{\partial \phi_{Vm} \langle \phi_T \bar{p} \bar{u}_i \rangle}{\partial x_i} \tag{8} \\
 & + v \frac{\partial}{\partial x_j} \left( \underbrace{\phi_{Vm} \left\langle \phi_T \frac{\partial \bar{u}_i}{\partial x_j} \bar{u}_i \right\rangle}_{(10)} \right) + \underbrace{\phi_{Vm} \left\langle \phi_T \bar{u}'_i \bar{u}'_j \frac{\partial \bar{u}_i}{\partial x_j} \right\rangle}_{(11)} \\
 & + \frac{\phi_{Vm}}{\rho} \left\langle \phi_T \bar{p} \frac{\partial \bar{u}_i}{\partial x_i} \right\rangle_{(12)} - v \underbrace{\phi_{Vm} \left\langle \phi_T \frac{\partial \bar{u}_i}{\partial x_j} \frac{\partial \bar{u}_i}{\partial x_j} \right\rangle}_{(13)} \\
 & + \frac{1}{\rho V_o} \int \underbrace{\bar{u}_i p n_i dS}_{(14)} - \frac{1}{V_o} \int_{S_{int}} \underbrace{v \bar{u}_i \frac{\partial u_i}{\partial x_j} n_j dS}_{(15)} \tag{19}
 \end{aligned}$$

In Eq. (19), terms 1 and 2 describe the local and convective change of the form-induced energy. Term 3 represents a part of form-induced energy exchanged with the double-mean energy balance of Eq. (17), where it is seen as term 5. Term 4 describes the potential supply of energy from gravity, if  $\langle \phi_T \bar{u}_i \rangle > 0$ . Terms 5 and 6 relate to the work of form-induced and porosity-correlation stresses against the bulk strain rate. The convection of the form-induced energy is described by term 7. Terms 8, 9 and 10 reflect the mean work rate of the turbulent stresses, mean pressure, and mean viscous stresses on the form-induced velocity field, respectively. The work of turbulent stresses, mean pressure, and mean viscous stress on the form-induced strain rates are accounted for by terms 11, 12 and 13, respectively. Terms 14 and 15 represent the work of pressure and viscous stresses on the interfacial surface and have the meaning of the source/sink terms in the form-induced energy balance. Note that the sum of Eqs (17) and (19) describe the balance of the spatially-averaged mean kinetic energy  $1/2 \langle \bar{u}_i \bar{u}_i \rangle$ .

### Spatially-averaged turbulent stresses

Integrating the local stress balance of Eq. (12) over  $V_m$ , dividing by  $V_o$ , and applying the double-averaging theorems given in Appendix 1 yield the balance for the spatially-averaged turbulent stresses, i.e.:

$$\begin{aligned}
 & \frac{\partial \phi_{Vm} \langle \phi_T \bar{u}'_i \bar{u}'_k \rangle}{\partial t} + \frac{\partial \phi_{Vm} \langle \phi_T \bar{u}'_i \bar{u}'_k \rangle \langle \bar{u}_j \rangle}{\partial x_j} \\
 & = - \underbrace{\left( \phi_{Vm} \langle \phi_T \bar{u}'_i \bar{u}'_j \rangle \frac{\partial \langle \bar{u}_k \rangle}{\partial x_j} + \phi_{Vm} \langle \phi_T \bar{u}'_k \bar{u}'_j \rangle \frac{\partial \langle \bar{u}_i \rangle}{\partial x_j} \right)}_{(3)}
 \end{aligned}$$

$$\begin{aligned}
 & - \underbrace{\left( \phi_{Vm} \left\langle \overline{\phi_{T'u'_i u'_j} \frac{\partial \tilde{u}_k}{\partial x_j}} \right\rangle + \phi_{Vm} \left\langle \overline{\phi_{T'u'_k u'_j} \frac{\partial \tilde{u}_i}{\partial x_j}} \right\rangle \right)}_{(4)} \\
 & - \underbrace{\frac{\partial \phi_{Vm} \langle \overline{\phi_{T'u'_i u'_k} \tilde{u}_j} \rangle}{\partial x_j}}_{(5)} - \underbrace{\frac{\partial \phi_{Vm} \langle \overline{\phi_{T'u'_i u'_k} u'_j} \rangle}{\partial x_j}}_{(6)} \\
 & - \underbrace{\frac{1}{\rho} \frac{\partial}{\partial x_j} (\phi_{Vm} \langle \overline{\phi_{T'u'_k p'}} \rangle \delta_{ij} + \phi_{Vm} \langle \overline{\phi_{T'u'_i p'}} \rangle \delta_{kj})}_{(7)} \\
 & + \underbrace{v \frac{\partial}{\partial x_j} \left( \phi_{Vm} \left\langle \overline{\phi_{T'u'_k} \frac{\partial u'_i}{\partial x_j}} + \overline{\phi_{T'u'_i} \frac{\partial u'_k}{\partial x_j}} \right\rangle \right)}_{(8)} \\
 & + \underbrace{\frac{\phi_{Vm}}{\rho} \left\langle \overline{\phi_{T'p'} \left( \frac{\partial u'_k}{\partial x_i} + \frac{\partial u'_i}{\partial x_k} \right)} \right\rangle}_{(9)} - \underbrace{2v \phi_{Vm} \left\langle \overline{\phi_T \frac{\partial u'_i}{\partial x_j} \frac{\partial u'_k}{\partial x_j}} \right\rangle}_{(10)} \\
 & + \underbrace{\frac{1}{\rho V_o} \int (u'_k p n_i + u'_i p n_k) dS}_{(11)} \\
 & - \underbrace{\frac{1}{V_o} \int_{S_{int}} v \left( u'_k \frac{\partial u_i}{\partial x_j} + u'_i \frac{\partial u_k}{\partial x_j} \right) n_j dS}_{(12)} \quad (20)
 \end{aligned}$$

The interpretation of the terms in Eq. (20) is similar to that of the terms in Eq. (12), although here it relates to the spatially-averaged quantities. Terms 1 and 2 represent the rate of change of the spatially-averaged turbulent stresses. Terms 3 and 4 express the cross-energy (covariance) exchange between Eq. (20) and Eqs (16), (18), respectively. Terms 5 and 6 describe the convective transport by the form-induced and turbulent velocity fields. Terms 7 and 8 are pressure and viscous transport terms. Terms 9 and 10 express the redistributive and dissipative effects. The final two terms, 11 and 12, are the source/sink terms associated with the boundary motion. The equation for the spatially-averaged turbulent kinetic energy  $\frac{1}{2} \phi_{Vm} \langle \overline{\phi_{T'u'_i u'_i}} \rangle$  is obtained from Eq. (20) by imposing  $i = k$ , i.e.:

$$\begin{aligned}
 & \underbrace{\frac{1}{2} \frac{\partial \phi_{Vm} \langle \overline{\phi_{T'u'_i u'_i}} \rangle}{\partial t}}_{(1)} + \underbrace{\frac{1}{2} \frac{\partial \phi_{Vm} \langle \overline{\phi_{T'u'_i u'_i}} \rangle \langle \tilde{u}_j \rangle}{\partial x_j}}_{(2)} \\
 & = - \underbrace{\phi_{Vm} \langle \overline{\phi_{T'u'_i u'_j}} \rangle \frac{\partial \langle \tilde{u}_i \rangle}{\partial x_j}}_{(3)} - \underbrace{\phi_{Vm} \left\langle \overline{\phi_{T'u'_i u'_j} \frac{\partial \tilde{u}_i}{\partial x_j}} \right\rangle}_{(4)} \\
 & - \underbrace{\frac{1}{2} \frac{\partial \phi_{Vm} \langle \overline{\phi_{T'u'_i u'_i} \tilde{u}_j} \rangle}{\partial x_j}}_{(5)} - \underbrace{\frac{1}{2} \frac{\partial \phi_{Vm} \langle \overline{\phi_{T'u'_i u'_i} u'_j} \rangle}{\partial x_j}}_{(6)}
 \end{aligned}$$

$$\begin{aligned}
 & - \underbrace{\frac{1}{\rho} \frac{\partial \phi_{Vm} \langle \overline{\phi_{T'u'_i p'}} \rangle}{\partial x_i}}_{(7)} + \underbrace{v \frac{\partial}{\partial x_j} \left( \phi_{Vm} \left\langle \overline{\phi_{T'u'_i} \frac{\partial u'_i}{\partial x_j}} \right\rangle \right)}_{(8)} \\
 & + \underbrace{\frac{\phi_{Vm}}{\rho} \left\langle \overline{\phi_{T'p'} \frac{\partial u'_i}{\partial x_i}} \right\rangle}_{(9)} - \underbrace{v \phi_{Vm} \left\langle \overline{\phi_T \frac{\partial u'_i}{\partial x_j} \frac{\partial u'_i}{\partial x_j}} \right\rangle}_{(10)} \\
 & + \underbrace{\frac{1}{\rho V_o} \int u'_i p n_i dS}_{(11)} - \underbrace{\frac{1}{V_o} \int_{S_{int}} v u'_i \frac{\partial u_i}{\partial x_j} n_j dS}_{(12)} \quad (21)
 \end{aligned}$$

The local and convective rates of change of the spatially-averaged turbulent energy are given by terms 1 and 2 in Eq. (21). Term 3 represents the work of the spatially-averaged turbulent stresses against the double-mean strain-rate, while term 4 describes the mean work rate of the turbulent stresses against the form-induced strain-rate. Terms 5 and 6 reflect the form-induced and turbulent convection effects. Terms 7 and 8 represent the work rate of turbulent pressure and viscous stresses, while terms 9 and 10 express the work of pressure and viscous stresses against the turbulent strain rate. Terms 11 and 12 are source/sink terms that relate to the work of pressure and viscous stresses on the interfacial (fluid–non-fluid) surface. In other words, these two terms highlight possibilities for the energy exchange between fluid flow and its moving boundary.

### 5 Discussion

The second-order equations reported in this paper supplement the double-averaged equations of mass and momentum conservation proposed in Nikora et al. (2013) for the study of mobile-bed flows (e.g. open-channel flows over mobile granular beds or terrestrial flows over wind-turbine arrays). The spatially-averaged turbulent stress, form-induced stress, and drag terms which arise in the double-averaged momentum equation due to averaging are the unknown variables that need to be parameterized or modelled. In this paper, we propose the equations describing the dynamics of the spatially-averaged turbulent and form-induced stresses. These equations can serve as the basis for the construction of predictive models and for the interpretation of experimental data in the studies of mobile-boundary flows. The interrelations between the double-mean, form-induced and turbulent components, as well as between these and boundary motions, should also be considered and modelled. The roughness mobility effects and the boundary energy fluxes are features that differentiate the proposed equations from the double-averaged equations reported by others. These features are highlighted in the following discussion, along with some examples of applications of the proposed equations (after employing appropriate simplifying assumptions).

5.1 Roughness mobility effects

The mobility of the flow boundaries causes an intermittent occupation of the near-bed domain by either the fluid or bed roughness elements. This intermittency is tracked using the clipping function  $\gamma(x_i, t)$  that is defined as 1 when a point  $x_i$  is occupied by the fluid and 0 otherwise. Using function  $\gamma$  we define the “fluid” averaging period  $T_f(x_i, t)$  as the collection of time periods when the fluid occupies a particular point  $x_i$  of the domain, and then employ the ratio  $T_f / T_0 = \phi_T$  as a measure of boundary mobility. As shown by Eq. (9), the variation of  $\phi_T$  in time and space can impose a non-zero mean strain rate ( $\partial \bar{u}_i / \partial x_i$ ) that may be interpreted as a “compressibility” effect in the time-averaged flow field. Due to Eq. (9) and the fluid incompressibility, i.e.  $\partial u_i / \partial x_i = 0$ , a non-zero turbulent strain-rate  $\partial u'_i / \partial x_i$  is implied. Consequently, the associated work of mean and turbulent pressure on the mean and turbulent strain-rates, attributed to terms 8 and 7 in Eqs (11) and (13) respectively, is retained in the balances of mean and turbulent energy. After spatial averaging, similar terms can be noted in the equations of double-mean, form-induced and turbulent energy balances, i.e. term 15 in Eq. (17), term 12 in Eq. (19) and term 9 in Eq. (21). In addition, spatial correlations between time-averaged velocity and porosity  $\phi_T$  arise in the double-averaged equations that may be interpreted as momentum fluxes due to the boundary mobility. Furthermore, the intermittent occupancy of the domain points by fluid within the averaging time period can cause changes in fluid mean momentum (losses or gains), mean energy, and turbulent energy when the domain occupancy changes. These sharp changes are attributed to the final two terms in each of Eqs (10)–(13).

The effects of time porosity  $\phi_T$  and the boundary mobility-related time integrals constitute the main difference between the proposed time-averaged equations for mobile-boundary flows and the conventional Reynolds-averaged equations for fixed-boundary flows. Operators and theorems for time-averaging over variables that may not be continuous within the averaging time period have been proposed earlier by Ishii and Hibiki (2006) and others (e.g. Drew & Passman, 1999). The conceptual difference between their approach and the one proposed in this paper is the use of the distribution function  $\gamma$  that allows the transition from the time-averaged equations for mobile-boundary flows to those for fixed-boundary conditions. With the current approach, the problem associated with a possible zero velocity  $v_i$  of the boundary in the denominator of the interfacial terms in the equations of Drew and Lahey (1979) is avoided, as for  $\gamma = 1$  its derivatives are  $\partial \gamma / \partial t = 0$  and  $\partial \gamma / \partial x_i = 0$  and the gain/loss integral terms do not emerge. For the fixed-bed flows, the time porosity is  $\phi_T \equiv 1$  (Nikora et al., 2013) and the operations of time-averaging and differentiation commute. Then, the proposed time-averaged equations coincide with the conventional Reynolds-averaged equations. The effects of the roughness geometry and bed mobility are introduced in the double-averaged equations for the second-order moments through the

roughness geometry functions (i.e. time and spatial porosities) and the work of pressure and viscous drag on the interfacial surfaces. These are the main differences between the proposed double-averaged equations and the equations developed by others for the form-induced energy (Raupach & Shaw, 1982) or for the spatially-averaged turbulent stresses/energy (Brunet et al., 1994; Mignot et al., 2008; Pedras & de Lemos, 2001).

5.2 Some physical interpretations

A preliminary interpretation of the terms involved in the double-averaged second-order Eqs (17), (19) and (21) can be based on the theoretical definitions of the rate of work and strain power (Malvern, 1969). Given the form of Eqs (17), (19) and (21), kinetic energy is supplied to the flow from the potential energy of gravity and is directed to the double-mean and form-induced energy balances through the right-hand-side terms of the following relation:

$$\underbrace{\phi_{Vm} \langle \phi_T \bar{u}_i \rangle g_i}_{\text{supply of the potential energy of gravity}} = \underbrace{\phi_{VT} \langle \bar{u}_i \rangle g_i}_{\text{energy supply to the double-mean energy balance (Eq.(17))}} + \underbrace{\phi_{Vm} \langle \phi_T \bar{u}'_i \rangle g_i}_{\text{energy supply to the form-induced energy balance (Eq. (19))}} \quad (22)$$

Due to the work rate of pressure, viscous stresses, and turbulent stresses, mechanical energy is redistributed over space. Through the work of viscous stresses against the strain rate a part of the mechanical energy is converted into heat, removing energy from the double-mean, form-induced and turbulent fields, i.e.:

$$\underbrace{v \phi_{Vm} \left\langle \phi_T \frac{\partial u_i}{\partial x_j} \frac{\partial u_i}{\partial x_j} \right\rangle}_{\text{total double-averaged kinetic energy converted into heat}} = \underbrace{v \phi_{Vm} \left\langle \phi_T \frac{\partial \bar{u}_i}{\partial x_j} \right\rangle \frac{\partial \langle \bar{u}_i \rangle}{\partial x_j}}_{\text{fluid kinetic energy dissipated from the double-mean field (Eq. (17))}} + \underbrace{v \phi_{Vm} \left\langle \phi_T \frac{\partial \bar{u}'_i}{\partial x_j} \frac{\partial \bar{u}'_i}{\partial x_j} \right\rangle}_{\text{fluid kinetic energy dissipated from the form-induced field (Eq. (19))}} + \underbrace{v \phi_{Vm} \left\langle \phi_T \frac{\partial u'_i}{\partial x_j} \frac{\partial u'_i}{\partial x_j} \right\rangle}_{\text{fluid kinetic energy dissipated from the turbulent field (Eq. (21))}} \quad (23)$$

Owing to the work of pressure and viscous stresses on the interfacial surface, the energy is exchanged between the three constituting flow fields (double-mean, form-induced, and turbulent) and boundary motions, i.e.:

$$\underbrace{\frac{1}{V_0} \int_{S_{\text{int}}} u_i \left( -\frac{1}{\rho} p n_i + v \frac{\partial u_i}{\partial n_j} \right) dS}_{\text{work of hydrodynamic forces at the interfacial boundary}}$$

$$\begin{aligned}
 &= \underbrace{\frac{\langle \bar{u}_i \rangle}{V_0} \int_{S_{\text{int}}} \left( -\frac{1}{\rho} p n_i + u_i v \frac{\partial u_i}{\partial n_j} \right) dS}_{\text{work of pressure drag and viscous friction on the double-mean flow (Eq. (17))}} \\
 &+ \underbrace{\frac{1}{V_0} \int_{S_{\text{int}}} \tilde{u}_i \left( -\frac{1}{\rho} p n_i + v \frac{\partial u_i}{\partial n_j} \right) dS}_{\text{work of hydrodynamic forces on the form-induced flow (Eq. (19))}} \\
 &+ \underbrace{\frac{1}{V_0} \int_{S_{\text{int}}} u'_i \left( -\frac{1}{\rho} p n_i + v \frac{\partial u_i}{\partial n_j} \right) dS}_{\text{work of hydrodynamic forces on the turbulent flow (Eq. (21))}} \quad (24)
 \end{aligned}$$

The modified Reynolds decomposition gave rise to the terms that do not emerge in the equation for the total double-averaged kinetic energy  $\frac{1}{2} \phi_{V_m} \langle \phi_T \bar{u}_i \bar{u}_i \rangle$  (sum of Eqs (17), (19) and (21)). These are the terms 13 and 14 in Eq. (17) and equivalent terms 5 and 6 in Eq. (19), term 12 in Eq. (17) and corresponding term 3 in Eq. (21), and term 11 in Eq. (19) and its counterpart term 4 in Eq. (21). Such terms represent the energy exchange between the

respective balances of the double-mean energy, form-induced energy, and turbulent energy. Figure 1 illustrates the energy exchanges between the double-mean, form-induced and turbulent fields, as well as the conversion of the kinetic energy to heat and the energy transferred through the action of mobile boundaries.

The exchange between the double-mean and turbulent flow fields  $\phi_{V_m} \langle \phi_T u'_i u'_j \rangle (\partial \bar{u}_i / \partial x_j)$  (i.e. term 3 in Eq. (21) and term 12 in Eq. (17)) may be interpreted as the production of the turbulent energy, as in considerations of the conventional Reynolds-averaged equations. This interpretation is supported by estimates for fixed-gravel-bed flows (e.g. Mignot, Barthelemy, & Hurther, 2009; Yuan & Piomelli, 2014). The energy exchange between the form-induced and turbulent fields  $\phi_{V_m} \langle \phi_T u'_i u'_j \rangle (\partial \tilde{u}_i / \partial x_j)$  (term 4 in Eq. (21) and term 11 in Eq. (19)) are assessed in Yuan and Piomelli (2014) where they are considered as bidirectional energy exchange depending on the characteristic scales present in the flow. In an earlier study, Mignot et al. (2009) noted that this term may be insignificant compared to the turbulence production term 3 in Eq. (21). Atmospheric flow studies (e.g. Raupach & Shaw,

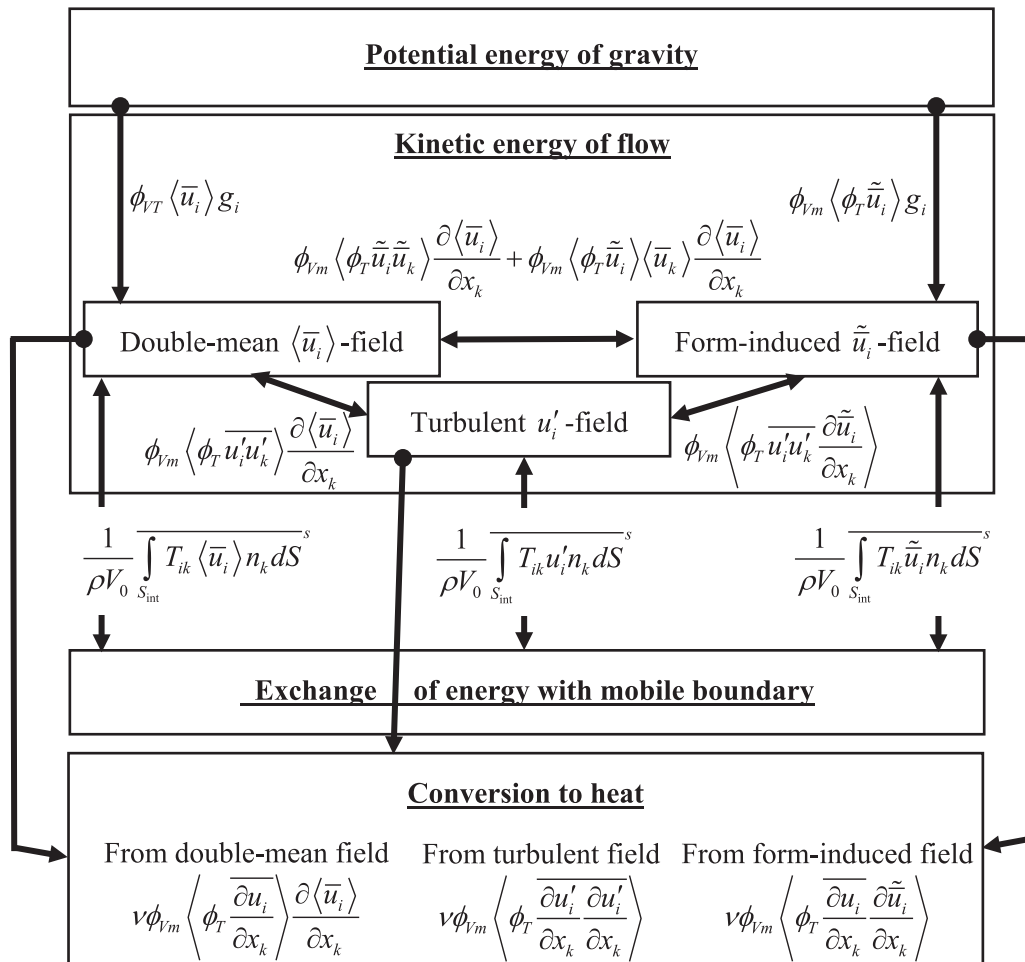


Figure 1 Simplified representation of the energy fluxes between the double-mean, form-induced and turbulent flow fields, conversion of the kinetic energy to heat and the energy exchange (source or sink of energy) with the mobile boundaries of the flow (where  $T_{ik}/\rho = -p\delta_{ik}/\rho + \nu\partial u_i/\partial x_k$  denotes the hydrodynamic stress tensor)

1982; Raupach, Coppin, & Legg, 1986) have associated this term with the work of drag on the interfacial boundary (term 17 in Eq. (17)), assuming the form-induced transport terms are insignificant. The exchange between the double-mean and form-induced flow fields  $\phi_{vm}(\phi_T \tilde{u}_i \tilde{u}_j)(\partial \langle \bar{u}_i \rangle / \partial x_j)$  (term 5 in Eq. (19) and term 13 in Eq. (17)) is interpreted as mainly the conversion of the double-mean energy into the form-induced energy (Yuan & Piomelli, 2014). The terms associated with the energy exchange at the boundary, i.e. the interfacial terms 14, 15 in Eq. (19) and terms 11, 12 in Eq. (21), are introduced in this paper and thus have never been assessed. Similarly, terms 3, 4, 5 in Eq. (17) and term 3 in Eq. (19), which appear in the equations due to potential correlations of the time-averaged quantities with the time porosity, are introduced here for the first time and their role remains to be clarified. At a first step, their assessment and interpretation can be done based on appropriate numerical simulations. The experimental capabilities will hopefully become available soon to complement simulations.

The equations proposed in this paper are applicable for flows over both mobile and immobile boundaries. For flows over immobile rough beds, the fluid averaging time  $T_f$  is equal to the total averaging period  $T_0$ , and thus  $\phi_T \equiv 1$ . The representation of the roughness geometry in the double-averaged equations then may be simplified by replacing  $\phi_{VT}$  and  $\phi_{vm}$  with the roughness geometry function (or spatial porosity)  $\phi$ , as  $\phi_{VT} = \phi_{vm} = \phi$ . The double-mean energy balance in Eq. (17) can therefore be rewritten as:

$$\begin{aligned} \frac{1}{2} \frac{\partial \langle \bar{u}_i \rangle \langle \bar{u}_i \rangle}{\partial t} + \frac{\langle \bar{u}_j \rangle}{2} \frac{\partial \langle \bar{u}_i \rangle \langle \bar{u}_i \rangle}{\partial x_j} &= \langle \bar{u}_i \rangle g_i - \frac{1}{\phi} \frac{\partial \phi \langle u'_i u'_j \rangle \langle \bar{u}_i \rangle}{\partial x_j} \\ &- \frac{1}{\phi} \frac{\partial \phi \langle \tilde{u}_i \tilde{u}_j \rangle \langle \bar{u}_i \rangle}{\partial x_j} - \frac{1}{\rho \phi} \frac{\partial \phi \langle \bar{p} \rangle \langle \bar{u}_i \rangle}{\partial x_i} \\ &+ \frac{v}{\phi} \frac{\partial}{\partial x_j} \left( \frac{\partial \phi \langle \bar{u}_i \rangle}{\partial x_j} \langle \bar{u}_i \rangle \right) + \langle u'_i u'_j \rangle \frac{\partial \langle \bar{u}_i \rangle}{\partial x_j} + \langle \tilde{u}_i \tilde{u}_j \rangle \frac{\partial \langle \bar{u}_i \rangle}{\partial x_j} \\ &+ \frac{\langle \bar{p} \rangle}{\rho} \frac{\partial \langle \bar{u}_i \rangle}{\partial x_i} - v \left\langle \frac{\partial \tilde{u}_i}{\partial x_j} \right\rangle \frac{\partial \langle \bar{u}_i \rangle}{\partial x_j} - v \frac{\partial \langle \bar{u}_i \rangle}{\partial x_j} \frac{\partial \langle \bar{u}_i \rangle}{\partial x_j} \\ &+ \frac{\langle \bar{u}_i \rangle}{\phi V_0} \int_{S_{int}} \frac{p}{\rho} n_i dS - \frac{\langle \bar{u}_i \rangle}{\phi V_0} \int_{S_{int}} v \frac{\partial u_i}{\partial x_j} n_j dS \end{aligned} \quad (25)$$

Similarly, the form-induced energy balance in Eq. (19) takes the following form for immobile-bed flows:

$$\begin{aligned} \frac{1}{2} \frac{\partial \langle \tilde{u}_i \tilde{u}_i \rangle}{\partial t} + \frac{\langle \bar{u}_j \rangle}{2} \frac{\partial \langle \tilde{u}_i \tilde{u}_i \rangle}{\partial x_j} &= - \langle \tilde{u}_i \tilde{u}_j \rangle \frac{\partial \langle \bar{u}_i \rangle}{\partial x_j} - \frac{1}{2\phi} \frac{\partial \phi \langle \tilde{u}_i \tilde{u}_i \tilde{u}_j \rangle}{\partial x_j} \\ &- \frac{1}{\phi} \frac{\partial \phi \langle u'_i u'_j \tilde{u}_i \rangle}{\partial x_j} - \frac{1}{\rho \phi} \frac{\partial \phi \langle \bar{p} \tilde{u}_i \rangle}{\partial x_i} \\ &+ \frac{v}{\phi} \frac{\partial}{\partial x_j} \left( \phi \left\langle \frac{\partial \tilde{u}_i}{\partial x_j} \tilde{u}_i \right\rangle \right) + \left\langle u'_i u'_j \frac{\partial \tilde{u}_i}{\partial x_j} \right\rangle - \frac{\langle \bar{p} \rangle}{\rho} \frac{\partial \langle \bar{u}_i \rangle}{\partial x_i} \end{aligned}$$

$$\begin{aligned} &- v \left\langle \frac{\partial \tilde{u}_i}{\partial x_j} \frac{\partial \tilde{u}_i}{\partial x_j} \right\rangle - v \frac{\partial \langle \bar{u}_i \rangle}{\partial x_j} \left\langle \frac{\partial \tilde{u}_i}{\partial x_j} \right\rangle - \frac{\langle \bar{u}_i \rangle}{\phi V_0} \int_{S_{int}} \frac{p}{\rho} n_i dS \\ &+ \frac{\langle \bar{u}_i \rangle}{\phi V_0} \int_{S_{int}} v \frac{\partial u_i}{\partial x_j} n_j dS \end{aligned} \quad (26)$$

where  $\tilde{u}_i = -\langle \bar{u}_i \rangle$  was used at the interface for modifying terms 14 and 15 in Eq. (19). The work of pressure on double-mean strain rate  $\langle \bar{p} \rangle \partial \langle \bar{u}_i \rangle / \partial x_i$  (as  $\partial \langle \bar{u}_i \rangle / \partial x_i$  is non-zero if  $\phi$  spatially varies, Eq. (9)) and the work of pressure drag and viscous friction (surface integral terms) are terms that arise with opposite signs in both Eqs (25) and (26). Hence, these terms can be interpreted as bridges for energy exchange between the double-mean and form-induced fields due to the roughness spatial heterogeneity and the effect of drag. For fixed-bed flows, the energy from gravity is supplied to the double-mean flow only, while the energy to the form-induced field is likely provided from the double-mean flow through work of the form-induced stresses on the double-mean strain rate  $-\langle \tilde{u}_i \tilde{u}_j \rangle \partial \langle \bar{u}_i \rangle / \partial x_j$ , as was mentioned above. The balance of the spatially-averaged turbulent energy for the fixed-bed flows follows from Eq. (21) as:

$$\begin{aligned} \frac{1}{2} \frac{\partial \langle u'_i u'_i \rangle}{\partial t} + \frac{\langle \bar{u}_j \rangle}{2} \frac{\partial \langle u'_i u'_i \rangle}{\partial x_j} &= - \langle u'_i u'_j \rangle \frac{\partial \langle \bar{u}_i \rangle}{\partial x_j} - \left\langle u'_i u'_j \frac{\partial \tilde{u}_i}{\partial x_j} \right\rangle \\ &- \frac{1}{2\phi} \frac{\partial \phi \langle u'_i u'_i \tilde{u}_j \rangle}{\partial x_j} - \frac{1}{2\phi} \frac{\partial \phi \langle u'_i u'_i u'_j \rangle}{\partial x_j} \\ &- \frac{1}{\rho \phi} \frac{\partial \phi \langle u'_i p' \rangle}{\partial x_i} + \frac{v}{2\phi} \frac{\partial^2 \phi \langle u'_i u'_i \rangle}{\partial x_j \partial x_j} - v \left\langle \frac{\partial u'_i}{\partial x_j} \frac{\partial u'_i}{\partial x_j} \right\rangle \end{aligned} \quad (27)$$

As time porosity is  $\phi_T \equiv 1$  and the mean strain rate is  $\partial \bar{u}_i / \partial x_i = 0$ , the turbulent pressure-strain rate correlation (term 9 in Eq. (21)) vanishes to zero.

### 5.3 Application example: flow over an array of wind or tidal turbines

For some tasks, the equations proposed in Section 4 can be simplified by applying appropriate assumptions and boundary conditions. Such simplified equations may help clarify the flow interactions with mobile boundaries where energy is extracted from or supplied to the boundary motion. Below, we consider a hypothetical example related to flows over a large array of wind or tidal turbines, as represented schematically in Fig. 2.

The characteristic length scale of the flow is assumed to be small enough for the Coriolis effects to be negligible. In such conditions, the flow is driven by a streamwise pressure gradient. The efficiency of the deployed array, in terms of power extraction from the flow, can be studied using the balances of the double-mean energy, form-induced energy, and spatially-averaged turbulent energy. For simplicity we use an averaging volume  $V_0$  that includes all the turbines in the streamwise and spanwise direction, as noted in Fig. 2. In the vertical direction,

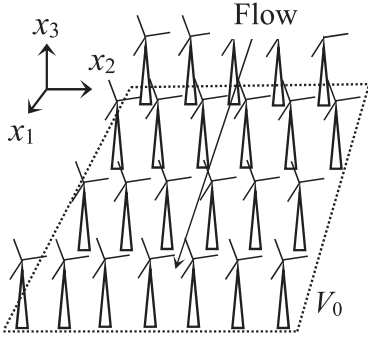


Figure 2 Sketch of flow over a wind turbine array. The region within dotted lines represents the total averaging volume  $V_0$

the averaging domain is thin enough to resolve hydrodynamic gradients in the surface-normal direction. We also assume flow two-dimensionality in terms of the double-averaged quantities, and so any spanwise derivatives of the double-averaged quantities are negligible, i.e.  $\partial\langle\bar{\theta}\rangle/\partial x_2 = 0$ . Furthermore, we assume the following conditions:

- The flow is steady, i.e.  $\partial\langle\bar{\theta}\rangle/\partial t = 0$ , and fully developed uniform, i.e.  $\partial\langle\bar{\theta}\rangle/\partial x_1 = 0$ .
- Spatial correlations between time-porosity  $\phi_T$  and the time-averaged fields are negligible, i.e.  $\langle\phi_T\bar{\theta}\rangle = 0$ .
- The flow is turbulent and fully developed and the effects of viscous fluid stresses on the double-averaged momentum balance are neglected, except viscous friction at the flow surface(s).

With these assumptions, the average loading  $f_D$  from pressure drag and viscous friction on the turbine array can be expressed using the double-averaged momentum Eq. (15) as:

$$f_D = -\frac{1}{\phi\rho} \frac{\partial\phi\langle\bar{p}\rangle}{\partial x_1} - \frac{1}{\phi} \frac{\partial}{\partial x_3} (\phi\langle\overline{u'_1 u'_3}\rangle + \phi\langle\tilde{u}_1 \tilde{u}_3\rangle) \quad (28)$$

where  $\phi = \phi_{VT}$  is the space-time porosity. The equation for the double-mean energy Eq. (17) is simplified to the form:

$$0 = -\frac{\langle\bar{u}_1\rangle}{\phi\rho} \frac{\partial\phi\langle\bar{p}\rangle}{\partial x_1} - \frac{1}{\phi} \frac{\partial}{\partial x_3} (\phi\langle\overline{u'_1 u'_3}\rangle\langle\bar{u}_1\rangle + \phi\langle\tilde{u}_1 \tilde{u}_3\rangle\langle\bar{u}_1\rangle) \\ + \langle\overline{u'_1 u'_3}\rangle \frac{\partial\langle\bar{u}_1\rangle}{\partial x_3} + \langle\tilde{u}_1 \tilde{u}_3\rangle \frac{\partial\langle\bar{u}_1\rangle}{\partial x_3} \\ - \underbrace{\frac{\langle\bar{u}_1\rangle}{V_f} \left( -\int_{S_{int}} \frac{p}{\rho} n_i dS + \int_{S_{int}} v \frac{\partial u_i}{\partial n_j} dS \right)}_{P_D} \quad (29)$$

where viscous transport and viscous dissipation are assumed to be negligible, as in fully developed turbulent flows they are orders of magnitude smaller than their turbulent counterparts. The interpretation of terms in Eq. (29) is the same as in Eq. (17).

The equations for the form-induced and turbulent kinetic energy (Eqs (19) and (21)) can also be simplified, i.e.:

$$0 = -\langle\tilde{u}_i \tilde{u}_3\rangle \frac{\partial\langle\bar{u}_i\rangle}{\partial x_3} - \frac{1}{\phi} \frac{\partial}{\partial x_3} \left( \frac{1}{2} \phi\langle\tilde{u}_i \tilde{u}_i \tilde{u}_3\rangle + \phi\langle\phi_T \overline{u'_i u'_3} \tilde{u}_i\rangle \right) \\ + \frac{\delta_{i3}}{\rho} \phi\langle\bar{p} \tilde{u}_i\rangle + \left\langle \frac{\overline{u'_i u'_j}}{\rho} \frac{\partial\tilde{u}_i}{\partial x_j} \right\rangle + \left\langle \frac{\bar{p}}{\rho} \frac{\partial\tilde{u}_i}{\partial x_i} \right\rangle \\ - v \left\langle \frac{\partial\overline{u_i}}{\partial x_j} \frac{\partial\tilde{u}_i}{\partial x_j} \right\rangle + \frac{1}{V_f} \underbrace{\left( -\int_{S_{int}} \tilde{u}_i \frac{p}{\rho} n_i dS + \int_{S_{int}} \tilde{u}_i \frac{\partial u_i}{\partial n_j} dS \right)}_{P_F} \quad (30)$$

$$0 = -\langle\overline{u'_i u'_3}\rangle \frac{\partial\langle\bar{u}_i\rangle}{\partial x_3} - \frac{1}{\phi} \frac{\partial}{\partial x_3} \left( \frac{1}{2} \phi\langle\overline{u'_i u'_i} \tilde{u}_3\rangle + \frac{1}{2} \phi\langle\overline{u'_i u'_i} u'_3\rangle \right) \\ + \frac{\delta_{i3}}{\rho} \phi\langle\overline{u'_i p'}\rangle - \left\langle \frac{\overline{u'_i u'_j}}{\rho} \frac{\partial\tilde{u}_i}{\partial x_j} \right\rangle + \left\langle \frac{p'}{\rho} \frac{\partial u'_i}{\partial x_i} \right\rangle \\ - v \left\langle \frac{\partial\overline{u'_i}}{\partial x_j} \frac{\partial\overline{u'_i}}{\partial x_j} \right\rangle - \frac{1}{V_f} \underbrace{\left( -\int_{S_{int}} \overline{u'_i} \frac{p}{\rho} n_i dS + \int_{S_{int}} v u'_i \frac{\partial u_i}{\partial n_j} dS \right)}_{P_T} \quad (31)$$

Viscous transport effects are considered negligible and are not included in Eqs (30) and (31). Terms  $P_D$ ,  $P_F$  and  $P_T$  represent the work spent on the surface of the turbines by the double-mean, form-induced and turbulent velocity fields, respectively. The role of these terms is two-fold: (1) generation of the turbine-scale turbulence (or “wake turbulence”) by pressure drag, and (2) energy transfer with the rotating blades. If the turbine blades are “frozen” then the second role vanishes, as in the conventional situation of immobile rough-bed turbulent flows. Equations (28)–(31) may serve as a physically justified basis for numerical modelling of the flows through and over turbine arrays. Furthermore, through the interfacial terms  $P_D$ ,  $P_F$  and  $P_T$  they provide a way of coupling the turbulent flow with the turbine operations.

It should be noted that equations, similar to Eq. (29), have already been used in studies of turbulent boundary layers over wind-turbine arrays to determine the mean power extracted by the turbines (Cal, Lebrón, Castillo, Kang, & Meneveau, 2010; Calaf, Meneveau, & Meyers, 2010). In these works, the rate of the energy extraction was fully assigned to term  $P_D$ . It is worth emphasizing that in this respect Eq. (29) provides additional methodological support to Cal et al. (2010) and Calaf et al. (2010) who used equations originally developed for flows over immobile boundaries. Also, we believe that the terms  $P_D$  are associated with actual energy extraction only partially, as in addition to them there may be contributions from the turbulent and form-induced terms  $P_F$  and  $P_T$ .

However, no systematic information is available regarding turbine interactions with the turbulent and the form-induced fields in terms of the energy exchange. Thus, it is not clear how blade motions interact with the form-induced and turbulent flow fields. According to Eqs (29)–(31), the energy exchange between the turbine rotors and fluid motions (at the array scale) can occur from all three sources, i.e. the double-mean, form-induced and turbulent components of the flow. The energy exchange with these fields may be important when the total power that is extracted from the flow is determined. Considering similar boundary conditions for flows over tidal turbine arrays, Eqs (29)–(31) can be used for the study of such cases. Equations (29)–(31) can be applied to the analysis of data coming from high resolution experiments or simulations to investigate such problems.

## 6 Conclusions

We have proposed a set of the first- and second-order time-averaged equations for mobile-boundary conditions that include mass, momentum, and momentum flux (i.e. stress) conservation equations. These equations can be used directly as a basis for consideration of mobile-boundary flows or in the spatially-averaged forms that are more suitable when dealing with flows over complex and mobile boundaries. Therefore, in addition to the time-averaged equations, we also proposed the double-averaged second-order equations that describe conservation of momentum fluxes and energy for the double-mean, form-induced, and turbulent components of the flow. The interrelations between these components as well as the effects of temporally and spatially varying roughness geometry are explicitly accounted for in the proposed equations. These features differentiate these equations from their counterparts that are already available for flows over immobile boundaries.

The complete interpretation of the terms of the derived balances of the double-mean, form-induced, and turbulent stresses and energies is not possible without involvement of high-resolution data. As a first step, highly resolved data from direct numerical simulations of open-channel flows over mobile granular beds (Vowinckel & Fröhlich, 2012) were used in Vowinckel et al. (2017a) to assess the terms of the double-averaged momentum equation. The same dataset was then used in Papadopoulos et al. (2018a) to evaluate the double-mean and form-induced energy balances, and in Papadopoulos et al. (2018b) to assess the spatially-averaged turbulent energy balance.

Together with the double-averaged conservation equations for mass and momentum, the second-order double-averaged equations provide a solid framework for experimental and numerical investigations of hydraulic problems involving flow over or through mobile boundaries. This framework can help in significant data reduction and assist in understanding the key physical mechanisms involved in mobile-bed complex flows, at scales relevant to the selected averaging domains. The proposed

energy budgets may provide useful insights into the interplay between boundary heterogeneity and mobility, flow (spatial) near-wall heterogeneity, and turbulence. After appropriate simplifications (as per the wind turbine example), the proposed equations can help in the conceptual development of improved hydraulic models and associated parameterizations. In addition to the design, optimization, and monitoring of wind turbine installations, applications include studying the effects of changing river bed morphology on the flow for flood control, the movement of fish schools, and river habitat management and restoration projects.

## Acknowledgements

The authors would like to thank Professor Francesco Ballio and two anonymous reviewers for their constructive and helpful comments that contributed to improving the final version of this manuscript.

## Funding

This study was part of the research project ‘Hydrodynamic Transport in Ecologically Critical Heterogeneous interfaces’ (HYTECH), the support of which, under the European Union’s Seventh Framework Programme (Marie Curie Actions FP7-PEOPLE-2012-ITN, European Commission [grant agreement number 316546]), is gratefully acknowledged. Financial support was also provided by the Engineering and Physical Sciences Research Council (EPSRC)/UK grant “Bed friction in rough-bed free-surface flows: a theoretical framework, roughness regimes, and quantification” [grant EP/K041088/1].

## Appendix 1. Averaging conditions and theorems

It is assumed that for the purpose of this paper, the following Reynolds conditions (as discussed e.g. in Monin & Yaglom, 1971) can be used:

$$\overline{\theta + \psi} = \bar{\theta} + \bar{\psi}, \quad \overline{\alpha\theta} = \alpha\bar{\theta}, \quad \bar{\alpha} = \alpha, \quad \overline{\theta\psi} = \bar{\theta}\bar{\psi} \quad (A1)$$

where  $\psi$  and  $\theta$  are random hydrodynamic variables and  $\alpha$  is a constant. For the condition  $\overline{\theta\psi} = \bar{\theta}\bar{\psi}$  to apply, the averaging time should be much larger than the characteristic time scale of the turbulent fluctuations  $\theta' = \theta - \bar{\theta}$  and much smaller than the scale of the mean variable  $\bar{\theta}$  (e.g. Monin & Yaglom, 1971). The four averaging conditions (Eq. (A1)) are often accompanied with the fourth Reynolds condition  $\overline{\partial\theta/\partial s} = \partial\bar{\theta}/\partial s$  that establishes a relation between a time-averaged derivative and a derivative of a time-averaged variable, where  $s$  stands for  $x_i$  or  $t$ .

When a variable  $\theta$  is not continuous within the averaging time period, the condition  $\overline{\partial\theta/\partial s} = \partial\bar{\theta}/\partial s$  needs special consideration as it may not apply for mobile-bed flows below



roughness tops, and a more general relation for linking  $\overline{\partial\theta/\partial s}$  and  $\partial\bar{\theta}/\partial s$  may be required. Such a relation is defined here as a “time-averaging theorem”. The starting point for its derivation is to express the indicator function  $\gamma$  in terms of the one-dimensional unit step function  $H$ :

$$H(t - t_s) = \begin{cases} 0, & t < t_s \\ 1, & t \geq t_s \end{cases} \quad (A2)$$

where  $t_s$  is a “transition” time instant when  $\gamma$  at a point in space changes from 0 to 1. Following a sketch shown in Fig. A1,  $\gamma$  at a point A can be written as  $\gamma = H(t - t_1) - H(t - t_2)$ . The time derivative of  $\gamma$  can be expressed as  $\partial\gamma / \partial t = \beta \delta(t - t_s)$ , where  $\beta$  indicates the sign of  $\partial\gamma / \partial t$  (i.e.  $\beta = \pm 1$ ) and  $\delta$  denotes the one-dimensional analogue of the Dirac delta function (Gray & Lee, 1977). With the help of Fig. A1a, one may note that  $\beta = 1$  when a point experiences a transition from being within non-fluid to being within fluid and  $\beta = -1$  when the point occupation changes back from fluid to non-fluid. Moreover, the sign of the inner product of the fluid velocity at the fluid–non-fluid interface  $v_i$  with the normal unit vector  $n_i$  (both parallel with the direction of the flow) is indicative of the fluid’s position with respect to the position of the interfacial surface at any transition time instant (Figs A1d and A1e). Normalizing the velocity  $v_i$  with its magnitude  $|v_i|$  gives the unit vector  $\hat{v}_i = v_i/|v_i|$ . Then, the product  $\hat{v}_i n_i$  is  $-1$  when the fluid reaches the point under consideration and  $1$  when it leaves it. Hence, the scalar function  $\beta$  can be expressed as  $\beta = -\hat{v}_i n_i$ . The partial time and spatial derivatives of  $\gamma$  can then be presented as:

Time instants  $t_1$  and  $t_2$  correspond to crossings of the fixed point by the interfacial surface between the flow and particle

$$\frac{\partial\gamma}{\partial t} = -\hat{v}_i n_i \delta(t - t_s) = -\frac{v_i n_i \delta(t - t_s)}{|v_i|}, \quad \frac{\partial\gamma}{\partial x_i} = \frac{n_i \delta(t - t_s)}{|v_i|} \quad (A3)$$

given that the total derivative of  $\gamma$  is (e.g. Gray & Lee, 1977):

$$\frac{d\gamma}{dt} = \frac{\partial\gamma}{\partial t} + v_i \frac{\partial\gamma}{\partial x_i} = 0 \quad (A4)$$

where  $v_i$  is the  $i$ th component of the interfacial surface velocity (the no-slip condition is assumed at the interfacial boundary). The time averaging theorems for time and spatial partial derivatives are obtained by applying the operators of Eq. (2) on the partial time and spatial derivatives of  $\theta$  and then using the relations of Eq. (A3), i.e.:

$$\begin{aligned} \frac{\overline{\partial\theta}}{\partial t} &= \frac{1}{T_0} \int_{T_0} \frac{\partial\theta\gamma}{\partial t} dt - \frac{1}{T_0} \int_{T_0} \theta \frac{\partial\gamma}{\partial t} dt = \frac{\partial\phi_T \bar{\theta}}{\partial t} \\ &+ \frac{1}{T_0} \int_{T_0} \theta \hat{v}_i n_i \delta(t - t_s) dt \quad \text{and} \\ \frac{\overline{\partial\theta}}{\partial x_i} &= \frac{1}{T_0} \int_{T_0} \frac{\partial\theta\gamma}{\partial x_i} dt - \frac{1}{T_0} \int_{T_0} \theta \frac{\partial\gamma}{\partial x_i} dt = \frac{\partial\phi_T \bar{\theta}}{\partial x_i} \end{aligned}$$

$$- \frac{1}{T_0} \int_{T_0} \theta n_i \frac{\delta(t - t_s)}{|v_i|} dt \quad (A5)$$

Using  $\bar{\theta}^s = \phi_T \bar{\theta}$  in Eq. (A5) gives the theorems for intrinsic time averaging:

$$\begin{aligned} \frac{\overline{\partial\theta}}{\partial t} &= \frac{1}{\phi_T} \frac{\partial\phi_T \bar{\theta}}{\partial t} + \frac{1}{\phi_T} \frac{1}{T_0} \int_{T_0} \theta \hat{v}_i n_i \delta(t - t_s) dt, \\ \frac{\overline{\partial\theta}}{\partial x_i} &= \frac{1}{\phi_T} \frac{\partial\phi_T \bar{\theta}}{\partial x_i} - \frac{1}{\phi_T} \frac{1}{T_0} \int_{T_0} \theta n_i \frac{\delta(t - t_s)}{|v_i|} dt \end{aligned} \quad (A6)$$

Considering now spatial averaging, the following relations are needed (Nikora et al., 2007):

$$\begin{aligned} \langle \theta + \psi \rangle &= \langle \theta \rangle + \langle \psi \rangle, \quad \langle \alpha \theta \rangle = \alpha \langle \theta \rangle, \\ \langle \alpha \rangle &= \alpha, \quad \langle \langle \theta \rangle \psi \rangle = \langle \theta \rangle \langle \psi \rangle \end{aligned} \quad (A7)$$

A wide separation between the characteristic length scales of the spatially-averaged value and the scales of the spatial fluctuations  $\bar{\theta} = \theta - \langle \theta \rangle$  is required for the condition  $\langle \langle \theta \rangle \psi \rangle = \langle \theta \rangle \langle \psi \rangle$  to apply (Nikora et al., 2007). The conditions in Eq. (A7) are spatial counterparts of the conventional Reynolds averaging rules in Eq. (A1). The theorems for consecutive time-space averaging proposed in Nikora et al. (2013) are:

$$\begin{aligned} \left\langle \frac{\overline{\partial\theta}}{\partial t} \right\rangle^s &= \frac{\partial\phi_{V_m} \langle \phi_T \bar{\theta} \rangle}{\partial t} + \frac{1}{V_0} \overline{\int_{S_{\text{int}}} \theta v_i n_i dS}, \\ \left\langle \frac{\overline{\partial\theta}}{\partial x_i} \right\rangle^s &= \frac{\partial\phi_{V_m} \langle \phi_T \bar{\theta} \rangle}{\partial x_i} - \frac{1}{V_0} \overline{\int_{S_{\text{int}}} \theta n_i dS} \end{aligned} \quad (A8)$$

Equation (A8) can be also obtained by integrating the right-hand side terms of Eq. (A5) over  $V_m$ , dividing by  $V_0$ , expanding the volume integrals considering  $V_m = V_0 - (V_0 - V_m)$ , expressing the time coordinates in  $\delta$  in terms of the spatial coordinates and applying the no-slip condition and the scaling property of the Dirac delta function. The theorems defined in Eqs (A5) and (A8) can be used for performing spatial averaging over the time-averaged equations of motion proposed in Section 3.

## Appendix 2. Key steps in derivation of the time- and double-averaged second-order equations

### Balance equation for local (at a point) turbulent stresses

- (1) In the first step, the balance of the time-averaged momentum flux  $\phi_T \bar{u}_i \bar{u}_k$  is obtained by using the momentum and mass conservation Eq. (6) to express the time derivatives in

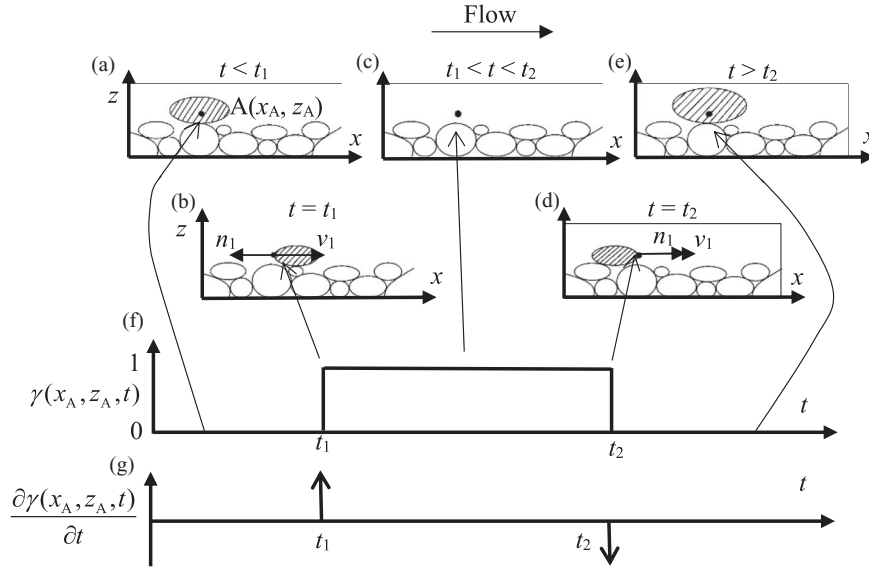


Figure A1 Sketch of a flow domain containing fixed particles (white) and rightward moving particles (shaded) at different time instants (a–e). The distribution of the indicator function  $\gamma$  (f) and its derivative  $\partial \gamma / \partial t$  with respect to time  $t$  at a position A is shown in (g) following Gray and Lee (1977).

the following identity:

$$\overline{\phi_T \frac{\partial \rho u_i u_k}{\partial t}} = \overline{\phi_T u_k \frac{\partial \rho u_i}{\partial t}} + \overline{\phi_T u_i \frac{\partial \rho u_k}{\partial t}} - \overline{\phi_T u_i u_k \frac{\partial \rho}{\partial t}} \quad (B1)$$

Eq. (6)                      Eq. (6)                      Eq. (6)

where the time averaging is performed using the operators of Eq. (1), the averaging conditions of Eq. (A1), the averaging theorems of Eq. (A5), and the Reynolds decomposition.

- (2) Then, in the same manner, time-averaging is performed on Eq. (6) to obtain the time-averaged continuity and momentum Eqs (7) and (8).
- (3) Equations (7) and (8) are used in the third step to replace the right-hand side terms in the expansion of the time derivative of the mean momentum flux  $\phi_T \bar{u}_i \bar{u}_k$ :

$$\frac{\partial \phi_T \bar{u}_i \bar{u}_k}{\partial t} = \bar{u}_k \underbrace{\frac{\partial \phi_T \bar{u}_i}{\partial t}}_{\text{Eq. (8)}} + \bar{u}_i \underbrace{\frac{\partial \phi_T \bar{u}_k}{\partial t}}_{\text{Eq. (8)}} - \bar{u}_i \bar{u}_k \underbrace{\frac{\partial \phi_T}{\partial t}}_{\text{Eq. (7)}} \quad (B2)$$

- (4) Using the Reynolds decomposition  $\theta = \bar{\theta} + \theta'$ , the time-averaged momentum flux  $\phi_T \bar{u}_i \bar{u}_k$  is decomposed into mean and turbulent momentum fluxes, i.e.:

$$\begin{aligned} \frac{\partial \phi_T \bar{u}_i \bar{u}_k}{\partial t} &= \frac{\partial \phi_T \bar{u}_i \bar{u}_k}{\partial t} + \frac{\partial \phi_T \bar{u}'_i \bar{u}'_k}{\partial t} \Rightarrow \frac{\partial \phi_T \bar{u}'_i \bar{u}'_k}{\partial t} \\ &= \underbrace{\frac{\partial \phi_T \bar{u}_i \bar{u}_k}{\partial t}}_{\text{Eq (B1)}} - \underbrace{\frac{\partial \phi_T \bar{u}_i \bar{u}_k}{\partial t}}_{\text{Eq. (B2)}} \end{aligned} \quad (B3)$$

- (5) Finally, the outcomes of steps 1 and 3 (based on Eqs (B1) and (B2)) are used to express the right-hand side time

derivatives in Eq. (B3) to obtain the equation for local (at a point) turbulent stresses.

Equations (B2) and (B3) underpin Eqs (10) and (12) reported in Section 3.

*Double-averaged equation for form-induced stresses*

- (1) The starting point is to obtain the equation for the spatially-averaged mean stresses  $\phi_{Vm} \langle \phi_T \bar{u}_i \bar{u}_k \rangle$  by integrating Eq. (10) over  $V_m$ , dividing by  $V_0$ , and then applying the averaging theorems given in Eq. (A8). For brevity, the final equation is not shown in full here as it represents an intermediate step in the derivation.
- (2) At a next step, the combined balance equation for the quantities  $\phi_{VT} \langle \bar{u}_i \rangle \langle \bar{u}_k \rangle$ ,  $\phi_{Vm} \langle \phi_T \bar{u}'_i \bar{u}'_k \rangle$  and  $\phi_{Vm} \langle \phi_T \bar{u}'_k \bar{u}'_i \rangle$  is obtained by substituting the double-averaged mass and momentum conservation Eqs (14) and (15) in the identity:

$$\begin{aligned} \frac{\partial}{\partial t} (\phi_{VT} \langle \bar{u}_i \rangle \langle \bar{u}_k \rangle) + \frac{\partial}{\partial t} (\phi_{Vm} \langle \phi_T \bar{u}'_i \bar{u}'_k \rangle) + \frac{\partial}{\partial t} (\phi_{Vm} \langle \phi_T \bar{u}'_k \bar{u}'_i \rangle) \\ = \langle \bar{u}_k \rangle \underbrace{\frac{\partial \phi_{Vm} \langle \phi_T \bar{u}_i \rangle}{\partial t}}_{\text{Eq. (15)}} + \langle \bar{u}_i \rangle \underbrace{\frac{\partial \phi_{Vm} \langle \phi_T \bar{u}_k \rangle}{\partial t}}_{\text{Eq. (15)}} - \langle \bar{u}_i \rangle \langle \bar{u}_k \rangle \underbrace{\frac{\partial \phi_{Vm} \langle \phi_T \rangle}{\partial t}}_{\text{Eq. (14)}} \\ - \phi_{Vm} \langle \phi_T \bar{u}'_i \bar{u}'_k \rangle \frac{\partial \langle \bar{u}_k \rangle}{\partial t} - \phi_{Vm} \langle \phi_T \bar{u}'_k \bar{u}'_i \rangle \frac{\partial \langle \bar{u}_i \rangle}{\partial t} \end{aligned} \quad (B4)$$

- (3) The third step involves the decomposition  $\bar{\theta} = \langle \bar{\theta} \rangle + \bar{\theta}'$  that is used to subdivide the spatially-averaged mean stress  $\phi_{Vm} \langle \phi_T \bar{u}_i \bar{u}_k \rangle$  into double-mean  $\phi_{VT} \langle \bar{u}_i \rangle \langle \bar{u}_k \rangle$  and form-induced  $\phi_{Vm} \langle \phi_T \bar{u}'_i \bar{u}'_k \rangle$  momentum fluxes as well as contributions from the porosity-velocity correlations, as explicitly shown in Eq. (3). The balance equation for the form-induced

stresses is then obtained by implementing Eqs (4) and (B4) as:

$$\frac{\partial}{\partial t} \phi_{V_m} \langle \phi_T \tilde{u}_i \tilde{u}_k \rangle = \underbrace{\frac{\partial}{\partial t} (\phi_{V_m} \langle \phi_T \bar{u}_i \bar{u}_k \rangle)}_{\text{Eq. (B4)}} - \underbrace{\frac{\partial}{\partial t} (\phi_{VT} \langle \bar{u}_i \rangle \langle \bar{u}_k \rangle + \phi_{V_m} \langle \phi_T \tilde{u}_i \rangle \langle \bar{u}_k \rangle + \phi_{V_m} \langle \phi_T \tilde{u}_k \rangle \langle \bar{u}_i \rangle)}_{\text{Eq. (B5)}} \quad (\text{B5})$$

The outcomes of Eqs (B4) and (B5) are Eqs (16) and (18), respectively.

#### Equation for the spatially-averaged turbulent stresses

To obtain the double-averaged equation for turbulent momentum fluxes (i.e. spatially-averaged Reynolds stresses), the outcome of Eq. (B3), i.e. Eq. (12), is integrated over  $V_m$ , divided by  $V_0$ , and then expanded using the averaging theorems given in Eq. (A8) to give Eq. (20).

#### Notation

$g$	= gravitational acceleration ( $\text{m s}^{-2}$ )
$n_i$	= unit vector normal to the interfacial surface $S_{\text{int}}$ , directed into the fluid (–)
$p$	= pressure ( $\text{kg m}^{-1} \text{s}^{-2}$ )
$T_0$	= total averaging time (s)
$T_f$	= sum of time intervals during which a specific point is occupied by the fluid (s)
$u_i$	= instantaneous velocity component in the $i$ th direction ( $i = 1,2,3$ : streamwise, spanwise, and vertical directions respectively) ( $\text{m s}^{-1}$ )
$v_i$	= velocity at the fluid–non-fluid interfacial surface in the $i$ th direction ( $\text{m s}^{-1}$ )
$V_0$	= total averaging volume ( $\text{m}^3$ )
$V_m$	= volume occupied by the fluid within $T_0$ ( $\text{m}^3$ )
$x_i$	= position coordinate in the $i$ th direction (m)
$\gamma$	= distribution function (–)
$\theta$	= a fluid quantity (velocity $\text{m s}^{-1}$ or pressure $\text{kg m}^{-1} \text{s}^{-2}$ )
$\bar{\theta}$	= time-averaged fluid quantity (velocity $\text{m s}^{-1}$ or pressure $\text{kg m}^{-1} \text{s}^{-2}$ )
$\langle \theta \rangle$	= spatially-averaged fluid quantity (velocity $\text{m s}^{-1}$ or pressure $\text{kg m}^{-1} \text{s}^{-2}$ )
$\langle \bar{\theta} \rangle$	= double-averaged fluid quantity (velocity $\text{m s}^{-1}$ or pressure $\text{kg m}^{-1} \text{s}^{-2}$ )
$\tilde{\theta}$	= spatial fluctuation of a time-averaged fluid quantity (velocity $\text{m s}^{-1}$ or pressure $\text{kg m}^{-1} \text{s}^{-2}$ ), $\tilde{\theta} = \bar{\theta} - \langle \bar{\theta} \rangle$
$\theta'$	= turbulent fluctuation of an instantaneous fluid quantity (velocity $\text{m s}^{-1}$ or pressure $\text{kg m}^{-1} \text{s}^{-2}$ ), $\theta' = \theta - \bar{\theta}$
$\nu$	= fluid kinematic viscosity ( $\text{m}^2 \text{s}^{-1}$ )
$\rho$	= fluid mass density ( $\text{kg m}^{-3}$ )
$\phi_T$	= local time porosity (–)

$\phi_{V_m}$	= space porosity (–)
$\phi_{VT}$	= space-time porosity (–)

#### ORCID

Konstantinos Papadopoulos  <http://orcid.org/0000-0001-9692-0669>

Vladimir Nikora  <http://orcid.org/0000-0003-1241-2371>

#### References

- Aberle, J., Koll, K., & Dittrich, A. (2008). Form induced stresses over rough gravel-beds. *Acta Geophysica*, 56(3), 584–600.
- Brunet, Y., Finnigan, J. J., & Raupach, M. R. (1994). A wind tunnel study of air flow in waving wheat: Single-point velocity statistics. *Boundary-Layer Meteorology*, 70(1), 95–132.
- Cal, R. B., Lebrón, J., Castillo, L., Kang, H. S., & Meneveau, C. (2010). Experimental study of the horizontally averaged flow structure in a model wind-turbine array boundary layer. *Journal of Renewable and Sustainable Energy*, 2(1), 013106.
- Calaf, M., Meneveau, C., & Meyers, J. (2010). Large eddy simulation study of fully developed wind-turbine array boundary layers. *Physics of Fluids*, 22(1), 015110.
- Coleman, S. E., Nikora, V. I., McLean, S. R., & Schlicke, E. (2007). Spatially averaged turbulent flow over square ribs. *Journal of Engineering Mechanics*, 133(2), 194–204.
- Cooper, J. R., Aberle, J., Koll, K., & Tait, S. J. (2013). Influence of relative submergence on spatial variance and form-induced stress of gravel-bed flows. *Water Resources Research*, 49(9), 5765–5777.
- Drew, D. A., & Lahey, R. T., Jr. (1979). Application of general constitutive principles to the derivation of multidimensional two-phase flow equations. *International Journal of Multiphase Flow*, 5(4), 243–264.
- Drew, D. A., & Passman, S. L. (1999). *Theory of multi-component fluids*. New York, NY: Springer.
- Giménez-Curto, L. A., & Lera, M. A. C. (1996). Oscillating turbulent flow over very rough surfaces. *Journal of Geophysical Research: Oceans*, 101(C9), 20745–20758.
- Gray, W. G., & Lee, P. C. Y. (1977). On the theorems for local volume averaging of multiphase systems. *International Journal of Multiphase Flow*, 3(4), 333–340.
- Ishii, M., & Hibiki, T. (2006). *Thermo-fluid dynamics of two-phase flow*. New York, NY: Springer.
- Jackson, R. (2000). *The dynamics of fluidized particles*. Cambridge: Cambridge University Press.
- Katul, G. G., & Albertson, J. D. (1998). An investigation of higher-order closure models for a forested canopy. *Boundary-Layer Meteorology*, 89(1), 47–74.
- Keller, L. V., & Friedmann, A. A. (1924, April). Differentialgleichung für die turbulente Bewegung einer kompressiblen

- Flüssigkeit [Differential equations for the turbulent flow of a compressible liquid]. In C. B. Biezeno & J. M. Burgers (Eds.), *Proceedings of the 1st international congress for applied mechanics* (pp. 395–405). Delft, NL: Waltman.
- Malvern, L. E. (1969). *Introduction to the mechanics of a continuous medium*. Englewood Cliffs, NJ: Prentice-Hall.
- Manes, C., Pokrajac, D., Coceal, O., & McEwan, I. (2008). On the significance of form-induced stress in rough wall turbulent boundary layers. *Acta Geophysica*, 56(3), 845–861.
- Mignot, E., Barthélemy, E., & Hurther, D. (2008). Turbulent kinetic energy budget in a gravel-bed channel flow. *Acta Geophysica*, 56(3), 601–613.
- Mignot, E., Barthélemy, E., & Hurther, D. (2009). Double-averaging analysis and local flow characterization of near-bed turbulence in gravel-bed channel flows. *Journal of Fluid Mechanics*, 618, 279–303.
- Monin, A. S., & Yaglom, A. M. (1971). *Statistical fluid mechanics: Mechanics of turbulence*. Boston, MA: MIT Press.
- Nezu, I., & Nakagawa, H. (1993). *Turbulence in open-channel flows*. Rotterdam, NL: A. A. Balkema.
- Nikora, V., Ballio, F., Coleman, S., & Pokrajac, D. (2013). Spatially averaged flows over mobile rough beds: Definitions, averaging theorems and conservation equations. *Journal of Hydraulic Engineering*, 139(8), 803–811.
- Nikora, V., Goring, D., McEwan, I., & Griffiths, G. (2001). Spatially averaged open-channel flow over rough bed. *Journal of Hydraulic Engineering*, 127(2), 123–133.
- Nikora, V., McEwan, I., McLean, S., Coleman, S., Pokrajac, D., & Walters, R. (2007). Double-averaging concept for rough-bed open-channel and overland flows: Theoretical background. *Journal of Hydraulic Engineering*, 133(8), 873–883.
- Papadopoulos, K., Nikora, V., Vowinckel, B., Cameron, S., Stewart, M., Gibbins, C., & Fröhlich, J. (2018a). Mean kinetic energy balance in flows over mobile granular beds: Application of the double-averaging methodology to DNS data. Manuscript submitted for publication.
- Papadopoulos, K., Nikora, V., Vowinckel, B., Jain, R., Cameron, S., Stewart, M., ... Fröhlich, J. (2018b). Spatially averaged turbulent kinetic energy balance in flows over mobile granular beds: Application of the double-averaging methodology to DNS data analysis. Manuscript submitted for publication.
- Pedras, M. H., & de Lemos, M. J. S. (2000). On the definition of turbulent kinetic energy for flow in porous media. *International Communications in Heat and Mass Transfer*, 27(2), 211–220.
- Pedras, M. H., & de Lemos, M. J. S. (2001). Macroscopic turbulence modeling for incompressible flow through undeformable porous media. *International Journal of Heat and Mass Transfer*, 44(6), 1081–1093.
- Raupach, M. R., Coppin, P. A., & Legg, B. J. (1986). Experiments on scalar dispersion within a model plant canopy part I: The turbulence structure. *Boundary-Layer Meteorology*, 35(1–2), 21–52.
- Raupach, M. R., & Shaw, R. H. (1982). Averaging procedures for flow within vegetation canopies. *Boundary-Layer Meteorology*, 22(1), 79–90.
- Reynolds, O. (1895). On the dynamical theory of turbulent incompressible viscous fluids and the determination of the criterion. *Proceedings of the Royal Society of London A*, 186, 123–161.
- Rodi, W. (1984). *Turbulence models and their applications in hydraulics: A state of the art review*. Rotterdam, NL: A. A. Balkema.
- Vowinckel, B., & Fröhlich, J. (2012). Simulation of bed load transport in turbulent open channel flow. *Proceedings in Applied Mathematics and Mechanics*, 12(1), 505–506.
- Vowinckel, B., Nikora, V., Kempe, T., & Fröhlich, J. (2017a). Momentum balance in flows over mobile granular beds: Application of double-averaging methodology to DNS data. *Journal of Hydraulic Research*, 55(2), 190–207.
- Vowinckel, B., Nikora, V., Kempe, T., & Fröhlich, J. (2017b). Spatially-averaged momentum fluxes and stresses in flows over mobile granular beds: A DNS-based study. *Journal of Hydraulic Research*, 55(2), 208–223.
- Whitaker, S. (1968). *Introduction to fluid mechanics*. Englewood Cliffs, NJ: Prentice-Hall, Inc.
- Whitaker, S. (1999). *The method of volume averaging*. Dordrecht, NL: Springer.
- Wilson, N. R., & Shaw, R. H. (1977). A higher order closure model for canopy flow. *Journal of Applied Meteorology*, 16(11), 1197–1205.
- Yuan, J., & Piomelli, U. (2014). Roughness effects on the Reynolds stress budgets in near-wall turbulence. *Journal of Fluid Mechanics*, 760, R1.