

University of Nebraska - Lincoln

DigitalCommons@University of Nebraska - Lincoln

U.S. Environmental Protection Agency Papers

U.S. Environmental Protection Agency

6-2013

Molecular Detection of *Campylobacter* spp. and Fecal Indicator Bacteria during the Northern Migration of Sandhill Cranes (*Grus canadensis*) at the Central Platte River

Jingrang Lu

U.S. Environmental Protection Agency, lu.jingrang@epa.gov

Hodon Ryu

U.S. Environmental Protection Agency, Ryu.Hodon@epamail.epa.gov

Jason R. Vogel

Oklahoma State University, jason.vogel@ou.edu


Jorge Santo Domingo

U.S. Environmental Protection Agency, santodomingo.jorge@epa.gov

Nicholas J. Ashbolt

U.S. Environmental Protection Agency, ashbolt.nick@epa.gov

Follow this and additional works at: <https://digitalcommons.unl.edu/usepapapers>

 Part of the [Earth Sciences Commons](#), [Environmental Health and Protection Commons](#), [Environmental Monitoring Commons](#), and the [Other Environmental Sciences Commons](#)

Lu, Jingrang; Ryu, Hodon; Vogel, Jason R.; Santo Domingo, Jorge; and Ashbolt, Nicholas J., "Molecular Detection of *Campylobacter* spp. and Fecal Indicator Bacteria during the Northern Migration of Sandhill Cranes (*Grus canadensis*) at the Central Platte River" (2013). *U.S. Environmental Protection Agency Papers*. 187.

<https://digitalcommons.unl.edu/usepapapers/187>

This Article is brought to you for free and open access by the U.S. Environmental Protection Agency at DigitalCommons@University of Nebraska - Lincoln. It has been accepted for inclusion in U.S. Environmental Protection Agency Papers by an authorized administrator of DigitalCommons@University of Nebraska - Lincoln.

Molecular Detection of *Campylobacter* spp. and Fecal Indicator Bacteria during the Northern Migration of Sandhill Cranes (*Grus canadensis*) at the Central Platte River

Jingrang Lu,^a Hodon Ryu,^a Jason Vogel,^b Jorge Santo Domingo,^a Nicholas J. Ashbolt^a

Office of Research and Development, U.S. Environmental Protection Agency, Cincinnati, Ohio, USA^a; Oklahoma State University, Stillwater, Oklahoma, USA^b

The risk to human health of the annual sandhill crane (*Grus canadensis*) migration through Nebraska, which is thought to be a major source of fecal pollution of the central Platte River, is unknown. To better understand potential risks, the presence of *Campylobacter* species and three fecal indicator bacterial groups (*Enterococcus* spp., *Escherichia coli*, and *Bacteroidetes*) was assayed by PCR from crane excreta and water samples collected during their stopover at the Platte River, Nebraska, in 2010. Genus-specific PCR assays and sequence analyses identified *Campylobacter jejuni* as the predominant *Campylobacter* species in sandhill crane excreta. *Campylobacter* spp. were detected in 48% of crane excreta, 24% of water samples, and 11% of sediment samples. The estimated densities of *Enterococcus* spp. were highest in excreta samples (mean, 4.6×10^8 cell equivalents [CE]/g), while water samples contained higher levels of *Bacteroidetes* (mean, 5.1×10^5 CE/100 ml). *Enterococcus* spp., *E. coli*, and *Campylobacter* spp. were significantly increased in river water and sediments during the crane migration period, with *Enterococcus* sp. densities ($\sim 3.3 \times 10^5$ CE/g) 2 to 4 orders of magnitude higher than those of *Bacteroidetes* (4.9×10^3 CE/g), *E. coli* (2.2×10^3 CE/g), and *Campylobacter* spp. (37 CE/g). Sequencing data for the 16S rRNA gene and *Campylobacter* species-specific PCR assays indicated that *C. jejuni* was the major *Campylobacter* species present in water, sediments, and crane excreta. Overall, migration appeared to result in a significant, but temporary, change in water quality in spring, when there may be a *C. jejuni* health hazard associated with water and crops visited by the migrating birds.

Every year, millions of birds migrate across national and intercontinental borders in response to factors such as food availability, seasonal climate change, and the need for habitats in which to nest and raise offspring (1). Waterfowl migration has a positive economic impact due to recreational activities, such as hunting and bird watching. On the other hand, some waterfowl are known vectors of zoonotic pathogens and antibiotic resistance genes (2–5), which they can acquire via coprophagy or by ingestion of contaminated water (6). When roosting in high numbers, waterfowl may cause water quality deterioration, and therefore, humans and animals in contact with such water risk higher incidences of illness (7, 8). From a public health risk perspective, *Salmonella*, *Campylobacter*, *Listeria*, and *Yersinia* are among the genera of human bacterial pathogens most often detected in waterfowl (9). Of all human bacterial pathogens, *Campylobacter* species, such as *Campylobacter jejuni*, *Campylobacter coli*, and *Campylobacter lari* from gulls, Canada geese, and whistling swans, have been the most frequently documented in bird feces (10–13).

Besides their potential role in pathogen transmission, waterfowl migrations can also cause significant increases in fecal indicator bacteria (FIB) in recreational waters that can result in beach closures. For example, the number of *Escherichia coli* bacteria in two reservoir lakes in Scotland was related to the number of roosting gulls (14). In another study, waterfowl, such as ducks, geese, and swans, were considered one of the major sources of fecal coliforms in Buttermilk Bay, MA, although the loading of fecal coliforms varied seasonally with bird species and bird population density (15). In western Sydney, Australia, a recreational lake was closed for several years until a risk assessment demonstrated that there was a relatively low risk from the waterfowl during dry weather (16).

The North American migration of sandhill cranes (*Grus ca-*

nadensis) is linked to the roosting of over 500,000 birds along the central Platte River in Nebraska (17). The Platte River has numerous beneficial uses for people in central Nebraska, such as crop irrigation, fishing, and as a source of water for hydroelectric power plants and drinking. When migrating to the Platte River, sandhill cranes feed in nearby corn fields and then move to the Platte River or surrounding wetlands to roost at night. While sandhill cranes and other waterfowl are suspected to have an impact on the microbial water quality of the Platte River during their annual migration, there is little documentation on FIB and the possible public health risk. Nonetheless, studies in Canada and Alaska have shown a link between crane excretion of *C. jejuni* (5, 12, 18) and human disease (7). Additionally, the human health significance of *Salmonella* in hooded cranes (*Grus monacha*) and whitenaped cranes (*Grus vipio*) in Japan (19, 20) and *Mycobacterium avium* in sandhill cranes (21) is unclear.

Hundreds of thousands of sandhill cranes use the Central Flyway (Fig. 1), and a recent food-borne outbreak (7) implies that these birds may also represent a risk at other migration stopovers. However, the risks are poorly understood due to the lack of data on *C. jejuni* carriage during crane migration. Hence, the main objective of this study was to determine the occurrence and quan-

Received 24 December 2012 Accepted 26 March 2013

Published ahead of print 12 April 2013

Address correspondence to Jingrang Lu, lu.jingrang@epa.gov.

Supplemental material for this article may be found at <http://dx.doi.org/10.1128/AEM.03990-12>.

Copyright © 2013, American Society for Microbiology. All Rights Reserved.

doi:10.1128/AEM.03990-12

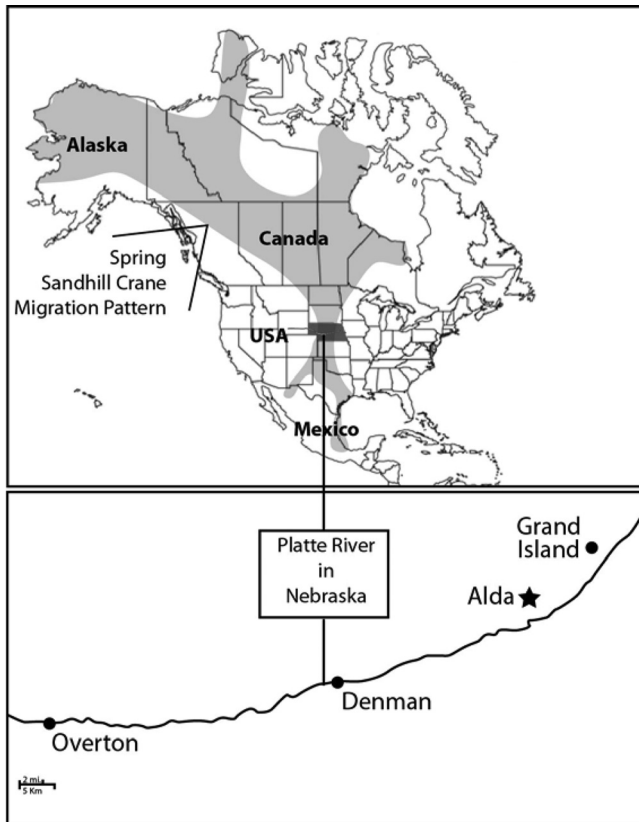


FIG 1 Map of the migration area and flyway of sandhill cranes and sampling sites for excreta (Alda), water (Overton, Denman, and Grand Island), and sediments (Alda). The upper map was adapted, with permission, from a map created by the Crane Trust using USGS data.

tivity of *Campylobacter* species and fecal indicators in the excreta of sandhill cranes and comigrating snow geese roosting along the Platte River and in stream water and sediments associated with the major roosting zone. This information is not only needed to inform managers about FIB impacts, but also provides data to allow the development of quantitative microbial risk assessment models (16, 46).

MATERIALS AND METHODS

Sample collection and processing and DNA extraction. Water samples were collected in triplicate from January to May 2010 on 14 different dates from three locations within the Platte River (Overton, Denman, and Grand Island, NE) (Fig. 1). During the period of bird migration, the field parameters—temperature (5.7 to 9.3°C), pH (8.33 to 8.63), turbidity (5.3 to 21.5 nephelometric turbidity units [NTU]), and specific conductivity (771 to 1,134 $\mu\text{S} \cdot \text{cm}^{-1}$)—were measured from a subset of the samples collected with an Isco refrigerated autosampler (Teledyne Isco, Lincoln, NE). Sandhill crane numbers were also estimated by watching the migrating crane population. For the purpose of quality assurance and quality control, on each water-sampling day, two field water blanks, consisting of ultrapure water from the U.S. Geological Survey (USGS) National Water Quality Laboratory, were poured from a jug into a sample bottle at the field site using the same sampling protocol that was used for environmental samples. The field blanks ($n = 26$, to monitor for any experiment contamination) and all other samples were processed together. Additionally, sediment samples (coarse river sands, approximately 2 mm in diameter) were collected in triplicate on the same days ($n = 9$) as the water samples at approximately 11:00 a.m. The location for sediment samples

was from a roosting area near Alda, NE, close to the Grand Island sampling site (Fig. 1). Sandhill crane ($n = 64$) and associated snow goose (*Chen caerulescens*) ($n = 22$) excreta samples were collected at locations near the sediment-sampling site on the grounds of the Platte River Whooping Crane Maintenance Trust near Alda, NE, soon after defecation and immediately placed into sterile plastic bags and stored in ice coolers for overnight shipment to the U.S. Environmental Protection Agency (EPA) research facility (Cincinnati, OH).

For each sample of bird excreta, subsamples were used for culture-based studies and molecular analyses. Approximately 1 gram of excreta was transferred to sterile conical tubes containing 3 ml phosphate-buffered saline (PBS) and enriched for *Campylobacter* spp. Specifically, 1 ml of the fecal-PBS solution was transferred to Bolton broth (CM0983; Oxoid, Basingstoke, United Kingdom) and incubated under microaerophilic conditions (5% O_2 , 10% CO_2 , 85% N_2) at 42°C for 72 h. After 72 h, an aliquot (1 ml) of the enriched cultures was harvested via centrifugation at $15,000 \times g$ for 10 min, and DNA was extracted using the MasterPure DNA Purification Kit following the manufacturer's instructions (Epicenter Biotechnologies, Madison, WI). For excreta and water samples, DNA extracts were further purified using the Genomic DNA Clean and Concentrator kit as recommended (Zymo Research Corp., Irvine, CA). Final DNA extracts were eluted in 100 μl molecular-grade water, and DNA concentrations were estimated with a NanoDrop ND-1000 Spectrophotometer (NanoDrop Technologies, Inc., Wilmington, DE). We have previously described this protocol and validated it for various aquatic biofilm samples, demonstrating the removal of PCR inhibition (J. Lu, T. L. Gerke, H. Y. Buse, and N. J. Ashbolt, submitted for publication). Specifically, the procedures for various sample types prior to DNA extraction were as follows. Crane excreta samples (0.3 g) were disrupted by beating with 0.1-mm silica beads (MP Biomedicals LLC, Solon, OH) in 300 μl T&C lysis buffer (Epicenter Biotechnologies, Madison, WI) for 60 s, using a Mini Bead Beater (BioSpec Products, Inc., Bartlesville, OK), followed by DNA extraction and purification. Sediment samples (5.0 g) were transferred to conical tubes containing 50 ml of PBS buffer and dispersed three times at 70% amplitude for 30 s using a Misonix Sonicor S-4000 (Qsonica, LLC, Newtown, CT). The sediment samples were centrifuged at $1,000 \times g$ for 5 min. A subsample of the supernatant (5 ml) was processed for *Campylobacter* species enrichment as described above. The rest of the sample was transferred to three 15-ml conical tubes and centrifuged at $4,500 \times g$ for 15 min. The resulting pellets were pooled in one microtube for DNA extraction, but without the additional (Zymo purification kit) purification step. Water samples (100 ml) were filtered through polycarbonate membranes (0.40- μm pore size; 47-mm diameter; GE Water and Process Technologies, Trevose, PA). The membranes were aseptically cut into four pieces according to an optimized protocol from previous studies (22, 23), placed into tubes containing lysing solution, and processed using silica bead disruption, and DNA was extracted and further purified as described for the excreta samples. Additionally, water samples (5 ml) were enriched for *Campylobacter* spp. and processed as described above.

Quantitative PCR. Quantitative PCR (qPCR) assays were used to detect *Campylobacter* spp. (24), *Enterococcus* spp. (25), *Bacteroidetes* (26), and *E. coli* (27), with the modifications described by Lu et al. (28) for the samples from crane excreta, water, and sediments. Additionally, a putative crane-specific qPCR assay (29) targeting *Catellibacoccus*-like bacteria was used to detect sandhill crane excreta in water and sediment. The cited primer sequences are listed in Table S1 in the supplemental material. Target cells in the extracts were quantified as spiked cell equivalents (CE). The detection limits and standard curves for *Campylobacter* spp. were obtained using standardized procedures we developed (J. Lu, T. L. Gerke, H. Y. Buse, and N. J. Ashbolt, submitted for publication), i.e., determining standard curves by spiking a strain with targeted sequences into matrices originated from sources the same as or similar to the samples assayed. Specifically, five crane excreta and water samples and four sediments that previously tested negative for *C. jejuni* were pooled and used as *C. jejuni*-spiking matrices. Serial dilutions of *C. jejuni* from 10^8 to 10^1 were pre-

pared in PBS and spiked into 9 (8 dilutions and 1 negative control) 1-ml triplicate samples of crane excreta-PBS buffer, sediment-PBS buffer, or river water, and DNA was isolated as described above. For quantifying fecal indicators, serial dilutions (10^8 to 10^1) of *E. coli* K-12 MG1655 and *Enterococcus faecalis* ATCC 29212 following overnight culture and *Bacteroides thetaiotaomicron* (ATCC 29741) cells within BioBalls (BioBall Custom HighDose10K; BTF, North Ryde, Australia) were prepared and spiked into nine (eight dilutions and one negative control) 1-ml filter-sterilized matrix samples, and DNA was isolated as described above. For the putative crane excreta marker, duplicate serial dilutions of crane fecal DNA (10^{-8} to 10^{-12} g/reaction) were used to generate standard curves as described previously (30). The quality assurance control for PCR was set up as a DNA standard control in the first row of the plate and a no-template control for each row of each 96-well plate assayed. To analyze qPCR fluorescent signals and obtain threshold cycle (C_t) values and cell equivalent numbers, manual setting of threshold and baseline parameters for the run was undertaken. To test qPCR inhibition, each DNA extract was assayed neat, after a 10-fold dilution in T&C lysis buffer (Epicenter Biotechnologies), and with the addition of the TaqMan Exogenous Internal Positive Control Reagents (a VIC-labeled probe) manufactured by ABI (Applied Biosystems). When any inhibition was identified, another DNA extraction with a further purification step was conducted. Furthermore, the final quantity of CE for each qPCR run was obtained by analyzing the standard control against samples. The lowest number of gene copies that was detected consistently in the standard curves was considered the qPCR limit of detection. Results below the detection limit were treated as zero. The qPCR efficiency was calculated using the following equation: efficiency percent = $100 \times [10(-1/\text{slope}) - 1]$ (Applied Biosystems).

PCR and cloning. A *Campylobacter* genus-specific PCR assay was used to determine the presence of campylobacters (30). Species-specific PCR assays targeting the *mapA* (31), *ceuE* (32), and 16S-23S rRNA gene internal transcribed spacer (ITS) (33) were used to detect *C. jejuni*, *C. coli*, and *C. lari*, respectively, when a sample was positive at the genus level. DNAs from the following bacterial strains were used as controls for all PCRs performed: *C. jejuni* LMG 8842, *C. coli* ATCC 33559, and *C. lari* ATCC 35221. For a range of excreta, water, and sediment samples positive in the *Campylobacter* genus-specific PCR, amplicons were cloned into pCR4.1 TOPO (Invitrogen, Carlsbad, CA) to aid in further identification. In addition, positive samples for the *mapA* assay were also cloned into pCR4.1 TOPO and sequenced as described by Lu et al. (28). Six *Campylobacter* genus-specific PCR clone libraries were generated: one snow goose fecal library (collected on 15 March 2010 [$n = 2$]); three sandhill crane fecal-clone libraries, by pooling PCR products from different crane excreta (collected on 15 March [$n = 2$], 18 March [$n = 4$], and 5 April [$n = 6$] 2010); one water clone library, by pooling a positive PCR product from each site (collected on 18 March 2010); and one sediment clone library from one sample (collected on 18 March 2010). To further confirm the presence of *C. jejuni* in crane excreta, a *mapA* PCR library was generated from pooled PCR products collected on three different sample dates (15 March [$n = 2$], 18 March [$n = 4$], and 5 April [$n = 6$] 2010). Raw sequences were processed with Sequencher 4.9 software (Gene Codes, Ann Arbor, MI) for editing, comparing, and alignment, using protocols, homology searches, a chimera check, and phylogenetic analysis, as previously described (28). Phylogenetic analysis based on *mapA* sequences was done using MEGA 4.1 (34). In order to investigate other possible sources of contamination, additional PCR assays were conducted to amplify cattle-specific (CF128) and human-specific (HF183) *Bacteroidetes* members in the sediment and water samples (35). A general *Bacteroidales* 16S rRNA gene PCR assay (Bac32f/Bac708r) was used to amplify *Bacteroidales* from nine water samples (35). After excluding chimeric sequences, a total of 851 *Bacteroidales* sequences were obtained and used for constructing a phylogenetic tree with 27 *Bacteroidales* sequences from the companion study (29).

TABLE 1 BLAST results of the clone libraries of *Campylobacter* spp. for the samples of Sandhill crane excreta, snow goose excreta, water, and sediment

Sample	No. of clones	Bacterial reference strains	Accession no.	Identity (%)
Crane excreta (16S rRNA)	579	<i>C. jejuni</i> subsp. <i>jejuni</i> ICDCJ07001	CP002029	>99
	2	<i>Campylobacter</i> sp. MIT 07-5158	HM211852	<95
	2	<i>C. canadensis</i> L285	EF621902	>99
Crane excreta (<i>mapA</i>)	130	<i>C. jejuni</i> subsp. <i>jejuni</i> S3, ICDCJ07001, IA3902	CP001960	95–97
Snow goose feces (16S rRNA)	20	<i>C. jejuni</i> subsp. <i>jejuni</i> ICDCJ07001	CP002029	>99
Water (16S rRNA)	52	<i>C. jejuni</i> subsp. <i>jejuni</i> ICDCJ07001	CP002029	>99
Sediment (16S rRNA)	44	<i>C. jejuni</i> subsp. <i>jejuni</i> ICDCJ07001	CP002029	>99

Data analysis and sequence submission. For qPCR data management and analysis, Microsoft Excel 2003 and SAS Systems version 8.2 (SAS, Cary, NC) were used. Statistical analysis included Pearson's correlation of qPCR quantity between *Campylobacter* spp. and fecal indicators and between sandhill crane markers and fecal indicators, and a *t* test with unequal sample sizes on all the qPCR signals between the pre- or postmigration and crane migration periods in water and sediment samples.

Nucleotide sequence accession numbers. Representative *Campylobacter* species and *Bacteroidetes* sequences from cloning experiments were deposited in GenBank with accession numbers JQ693816 to JQ693898 and KC149757 to KC149853, respectively.

RESULTS

***C. jejuni* isolates from excreta, water, and sediment samples.** A total of 583 sequences were generated from the 12 crane excreta samples positive for the *Campylobacter* species 16S rRNA gene (Table 1), and 99% were homologous to *C. jejuni* subsp. *jejuni* (strain ICDCJ07001; >99% sequence identity), with the remaining 1% identified as *Campylobacter canadensis* (strain EF621902; >99% sequence identity) and *Campylobacter* sp. strain MIT 07-5158 (taxonomy ID, 862209; <95% sequence identity) (Table 1). For the other three libraries cloned from snow goose excreta, water, and sediment, all 116 of the sequences were homologous to the same reference strain (*C. jejuni* subsp. *jejuni* strain ICDCJ07001; >99% sequence identity), which was different from the *C. jejuni* strain LMG 8842 used as a positive control. The presence of *C. jejuni* was supported by the detection of the *C. jejuni mapA* gene in the samples that were positive in the genus-specific assay and by the fact that *C. coli*- and *C. lari*-specific assays were negative in all the samples tested. Moreover, *mapA* fecal-clone sequences were closely related to those of the *C. jejuni* subsp. *jejuni* S3 *mapA* gene (i.e., 95 to 97% sequence identity). Phylogenetic analysis of the *mapA* gene sequences indicated four sequence groups out of the nine operational taxonomic units (OTUs) at 99% identity, but all of them were significantly different from known strains isolated from different sources (Fig. 2).

Campylobacter spp. were detected in 48% of crane excreta (see Table S2 in the supplemental material) ($n = 64$), 9% of snow goose excreta (see Table S3 in the supplemental material) ($n = 22$), 24% of water samples (see Table S4 in the supplemental ma-

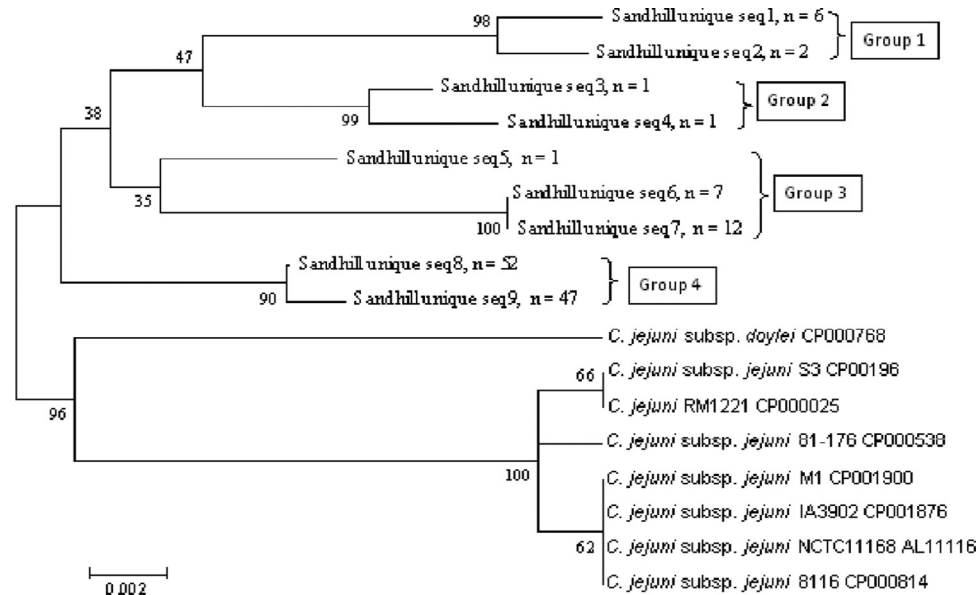


FIG 2 Unrooted neighbor-joining tree of *mapA* gene sequences (seq) obtained from sandhill crane excreta clone libraries. Sequences (length = 644; minimum match percentage $\geq 99\%$) were aligned with Sequencher 4.9, and a bootstrap consensus tree was created with MEGA 4.1. Bar represents 2% estimated phylogenetic divergence. Bootstrap values (500 replicates) are shown at the nodes.

terial) ($n = 45$), and 11% of sediment samples (see Table S5 in the supplemental material) ($n = 11$). Generally, similar results were obtained using DNA extracted either directly from samples or from enrichment cultures (see Table S2 to S5 in the supplemental material), implying limited culture bias (36) associated with the presence/absence detection approach (*Campylobacter* genus-specific PCR assay) use in this study, possibly attributable to the presence of only one dominant species. For some samples, direct DNA extracts showed weak positive, but not in enrichments, indicating a likelihood of inadequate addition of sample material to the enrichments. Based on the 16S rRNA gene clone libraries derived from composite water ($n = 3$) and sediment ($n = 1$) samples, all sequences were nearly identical to that of *C. jejuni* subsp. *jejuni* (Table 1, strain ICDCJ07001; $>99\%$ sequence identity), which was present in the crane excreta samples, as mentioned above. In contrast, negative results were obtained for all field blanks ($n = 26$).

Impact of crane excreta on Platte River water quality. The efficiency of *Campylobacter* qPCR for three different samples (excreta, water, and sediment) ranged from 90% to 98% (see Table S6 in the supplemental material), which was within normal range ($100\% \pm 10\%$), according to the instructions for the Applied Biosystems 7900HT Fast Real-Time PCR System. The detection limits of *Campylobacter* qPCR in the three sample matrices were all about 100 CE ml^{-1} , which was the same level as in pure water (see Table S6 in the supplemental material), indicating the protocol described for DNA purification was also valid for this study. On average, excreta, water, and sediment samples contained $5.0 \times 10^3 \text{ CE/g}$, 431 CE/100 ml , and 30 CE/g of *Campylobacter*, respectively. The mean *Campylobacter* estimates for the three water sites were 1.6×10^3 , 1.4×10^3 , and $3.0 \times 10^2 \text{ CE/100 ml}$ at Overton, Denman, and Grand Island, respectively. According to the observed bird presence in the river (1 March to 5 April is the main migration period) (Fig. 3B), mean densities (Table 2) for each site were significantly different during and after migration ($P < 0.0001$) in the

three locations and during and before migration at Denman and Grand Island ($P < 0.001$). The occurrence of *Campylobacter* spp. detected during crane presence was 75%, 63%, and 25% at Denman, Grand Island, and Overton, respectively. The variation of *Campylobacter* density was consistent with observed bird counts and the putative crane marker (Fig. 3A and B). For example, high signals of the crane marker were measured on March 8, 15, 22, and 24 at Denman and Grand Island, coinciding with peaks in *Campylobacter* detection. Overall, the *Campylobacter* CE values were significantly higher during crane presence ($1.1 \times 10^3 \text{ CE/100 ml}$) than before ($1.9 \times 10^2 \text{ CE/100 ml}$) or after (below the detection limit) the migration period.

The efficiency of fecal indicator qPCR ranged from 90% to 118%, and the detection limits varied from 100 to 520 CE ml^{-1} for different fecal indicator qPCR assays (see Table S7 in the supplemental material), which were used to estimate the detectable quantity of samples. The mean densities of *Enterococcus* spp., *E. coli*, and *Bacteroidetes* were estimated at 4.6×10^8 , 6.9×10^7 , and $1.4 \times 10^5 \text{ CE per gram}$ of crane excreta, respectively. For the water samples, *Bacteroidetes* densities were the highest among the range of FIB tested ($5.1 \times 10^5 \text{ CE/100 ml}$), followed by *Enterococcus* spp. ($3.5 \times 10^5 \text{ CE/100 ml}$) and *E. coli* ($9.3 \times 10^2 \text{ CE/100 ml}$). *Enterococcus* spp. and *E. coli* reached their peaks during the presence of cranes in the surrounding area, especially from 15 to 24 March (Fig. 3C and D), while the lowest densities were observed before the birds' arrival, except *Enterococcus* spp. at Overton, and after the birds' departure (Fig. 3C and Table 2). Specifically, the CE values were significantly higher during crane presence than after that period for *Enterococcus* spp. ($P < 0.0001$) and *E. coli* ($P = 0.014$) and during crane presence than before that period for *Enterococcus* spp. ($P = 0.020$) and *E. coli* ($P = 0.028$). There was a significant positive relationship between the *Campylobacter* spp. and *Enterococcus* spp. ($R^2 = 0.312$; $P = 0.012$) in crane excreta. The putative crane marker was detected only during the bird migration time at Denman and Grand Island. Interestingly, there

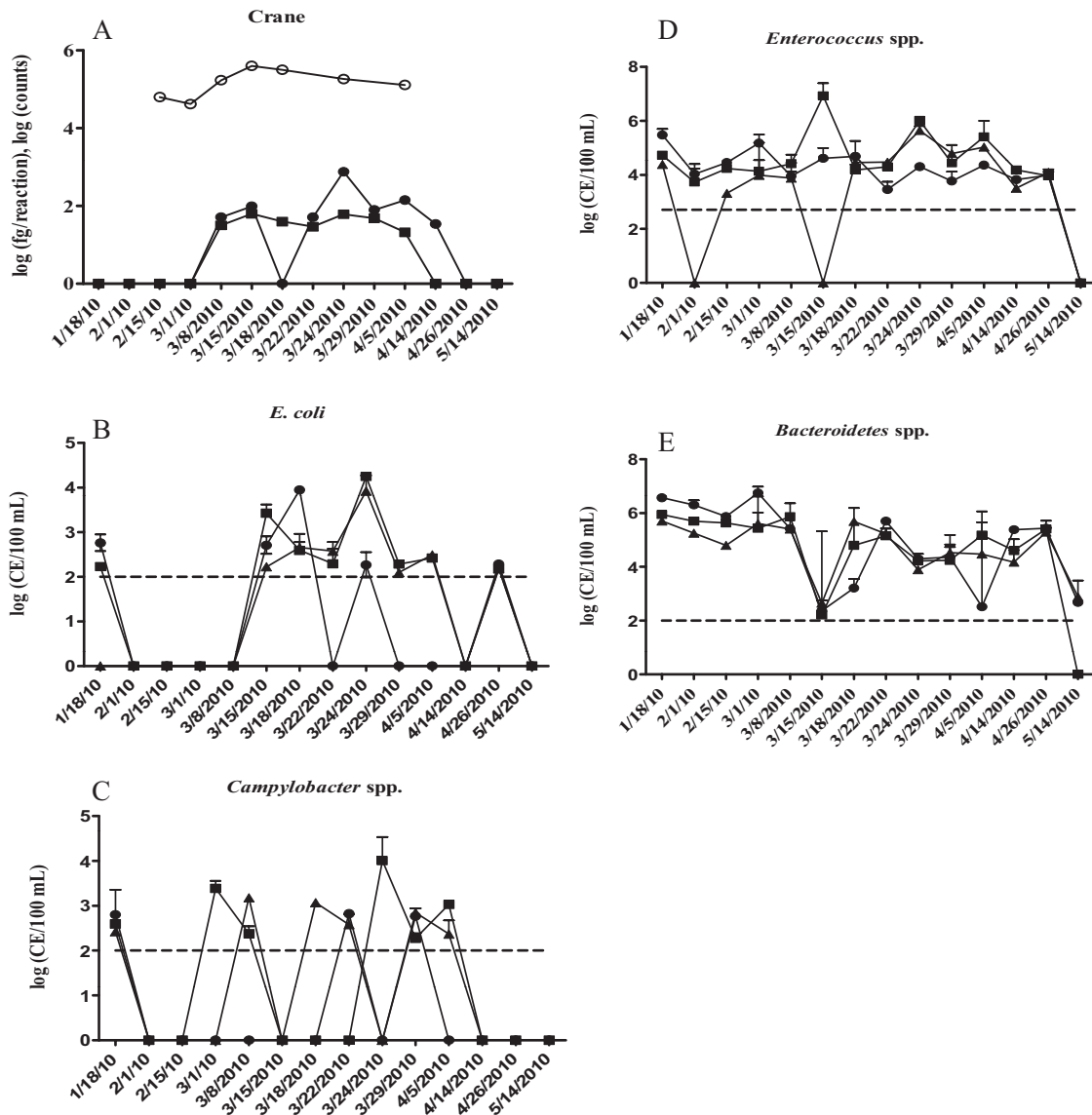


FIG 3 Variations in the relative abundances of *E. coli* (B), *Campylobacter* spp. (C), *Enterococcus* spp. (D), and *Bacteroidetes* (E) corresponding to crane numbers (A) observed in the field (○) and crane marker signals detected at Overton (●), Denman (■), and Grand Island (▲) in central Platte River water samples before (January-February), during (March-5 April), and after (14 April-May) sandhill crane migration. Note that in panel A the data for crane assays performed before and after the migration dates were not detectible. The dashed lines in panels B and C indicate the detection limits of qPCR for each targeted organism group.

were significant correlations of the crane fecal marker signals with *Enterococcus* spp. both in the excreta ($R^2 = 0.512$; $P = 0.022$) and in water ($R^2 = 0.325$; $P = 0.036$) and with *E. coli* in water ($R^2 = 0.468$; $P = 0.002$). The agreement between the putative crane marker and *Enterococcus* spp. in excreta and water indicated that the increase in the river water *Enterococcus* spp. was most likely predominantly caused by the migrating cranes and partially by snow geese. Importantly, during the crane migration period, *Enterococcus* spp. appeared to be indicative of crane excreta contamination in surface waters. According to Pearson correlation analysis, there were significant correlations between *Bacteroidetes* and the other three bacterial groups (*Campylobacter* spp., $R^2 = 0.339$, $P = 0.032$; *E. coli*, $R^2 = 0.383$, $P = 0.019$; *Enterococcus* spp., $R^2 = 0.841$, $P < 0.0001$) before the crane migration, but there was no significant correlation between *Bacteroidetes* and any of the other

three bacterial groups during the crane migration period. To compare the change in water quantity between the presence and absence of cranes, the four bacterial group means are reported in Table 2. Generally, means were higher in water during crane migration, with *Enterococcus* sp. densities in sediments ($\sim 3.3 \times 10^5$ CE/g) 2 to 4 orders of magnitude higher than densities of *Bacteroidetes* (4.9×10^3 CE/g), *E. coli* (2.2×10^3 CE/g), and *Campylobacter* spp. (46 CE/g). Additionally, the highest bacterial estimates in the sediments were also associated with the cranes' presence (Table 2; see Fig. S1 in the supplemental material). To further explore other potential fecal sources, *Bacteroidetes*-like sequences cloned from water samples ($n = 851$) were compared with those cloned from crane excreta ($n = 27$) and the sequences retrieved from GenBank. The phylogenetic analysis for the comparison (see Fig. S2 in the supplemental material) indicated that the *Bacte-*

TABLE 2 Average CE of *Campylobacter* spp. and fecal indicator bacteria estimated using qPCR

Location	No. of sampling times	Sample period (2010)	<i>Campylobacter</i> spp. [CE/100 ml (SD)]	<i>Bacteroidetes</i> [10 ³ CE/100 ml (SD)]	<i>Enterococcus</i> spp. [10 ³ CE/100 ml (SD)]	<i>E. coli</i> [CE/100 ml (SD)]
Overton	3	Jan.-15 Feb.	348 (602)	2,223 (1,552)	122 (177)	203 (352)
	8	1 Mar.-5 Apr.	398 (906)	913(2090)	56(76)	643(1531)
	4	13 Apr.-24 May	0 ^a	181 (159)	6 (5)	64 (110)
Denman	3	Jan.-15 Feb.	130 (226)	609 (248)	27 (24)	56 (98)
	8	1 Mar.-5 Apr.	2,384 (4,829)	293 (335)	1,577 (3,839)	2,698 (6,137)
	4	13 Apr.-24 May	0	102 (136)	8 (8)	50 (86)
Grand Island	3	Jan.-15 Feb.	105 (181)	252 (229)	10 (12)	0
	8	1 Mar.-5 Apr.	551 (580)	197 (221)	156 (200)	1,401 (3,359)
	4	13 Apr.-24 May	0	74 (112)	6 (8)	51 (88)
Sediment	6	15 Mar.-5 Apr.	46 (73)	6 (8)	49 (48)	3,268 (7,899)
	3	13 Apr.-24 May	0	3 (4)	2 (2)	0

^a 0, below the detection limit.

roidetes-like sequences from water were only about 7.4%, 8.2%, and 1.9% similar to those from crane excreta, human feces, and cattle feces, respectively, whereas the majority of *Bacteroidetes*-like sequences (82.5%) were most likely from unidentified sources. To investigate human and cattle sources further, human and cattle markers targeting *Bacteroidetes* were also estimated for the water samples (see Table S4 in the supplemental material), and the PCR results indicated that the occurrence of human and cattle markers did not increase during, before, or after migration.

DISCUSSION

C. jejuni appears to be the dominant *Campylobacter* species in sandhill crane excreta (48% occurrence), which is consistent with previous studies reported for the migration of birds in Canada and Alaska (7, 12). Further, the results indicated *C. jejuni* was diverse at the strain level, but that diversity cannot be resolved using 16S rRNA gene sequences (37). Previously, Pacha et al. (12) isolated *Campylobacter* strains from 81% of sandhill crane samples, all of which were later identified as *C. jejuni*. Similarly, Gardner et al. (7) also isolated *C. jejuni* from all 14 sandhill crane fecal samples examined, although *C. canadensis* was also detected. Because the central Platte River in Nebraska is the most important stopover area for the sandhill crane (17), it is reasonable to assume that the waterfowl carried the bacteria during their migration north through Canada to Alaska, although genotyping studies are needed to confirm this assumption. Other migrating waterfowl species have also been reported to have a high prevalence of *C. jejuni*. For example, Pacha et al. (12) isolated *Campylobacter* spp. from 73% of samples from wild duck (four species) and 5% of samples from Canada geese (*Branta canadensis*), and all the isolates were identified as *C. jejuni*. In other studies, 42% of samples from Canada geese (11) and 44% of samples from ducks (38) were isolated as *C. jejuni*. In addition to sandhill cranes in the current study, snow geese, as they comigrate with sandhill cranes, also appeared to share *C. jejuni*, but at a lower rate of occurrence (5%) than in sandhill crane excreta, coincident with the presence in Canada geese reported by Pacha et al. (12). Hence, given the close proximity of the two bird species, it would be valuable to follow migrating snow geese to see if their exposure to sandhill cranes was the source of their acquired *C. jejuni*; as inferred by Waldenström et al. (39), when migratory birds share feeding locations, they

have similar habitat preferences and migration patterns. The ecological character of sandhill cranes, a longer life span (40), and an omnivorous diet may subject them to harboring *Campylobacter*. In contrast, snow geese have shorter life spans, are herbivores, and feed side by side at water edges. If the sandhill cranes are the primary carriers, that could explain the lower level of *Campylobacter* occurrence in snow geese (5%), which are vulnerable to crane contamination in shallow waters, which were identified in the current study to harbor *C. jejuni*.

Previous studies have shown that *C. jejuni* strains are diverse and source specific. Waldenström et al. (13) detected diverse *C. jejuni* strains from wild birds and indicated that the different host species largely carried their own campylobacters and that cross-species transmission was rare. Gardner et al. (7) isolated *C. jejuni* from 14 individual crane fecal samples showing 26 unique pulsed-field gel electrophoresis (PFGE) pattern combinations (up to 7 different genotypes) in PulseNet (41). In the current study, the *mapA* gene assay was used to identify *C. jejuni*. This assay was first characterized by Stucki et al. (31), who showed that the MapA protein was present in all of the *C. jejuni* strains tested and absent in *C. coli* and related campylobacters and hence was considered *C. jejuni* specific, although there was high variation of *mapA* gene sequences among the isolates of *C. jejuni*. The *mapA* sequences in the current study were 3 to 5% different from those of known *C. jejuni* strains and may therefore imply that new strains were present in the crane excreta. The four different groups (9 OTUs at 99% identity) of *C. jejuni* sequences identified using the *mapA* gene assay also indicate they may be diverse and unique *C. jejuni* strains.

Champion et al. (42) examined 70 *C. jejuni* strains associated with human disease by genotyping; surprisingly, the majority (56%) were in the nonlivestock clade, and they suggested that most *C. jejuni* infections might be from nonlivestock (and possibly nonagricultural) sources. On a similar line, *C. jejuni* strains from wild European starlings (*Sturnus vulgaris*) (43) were shown to be a source of human and farm animal infection but distinct from poultry or other human disease isolates. A recent outbreak of campylobacteriosis was related to only a limited range of sandhill crane fecal isolates (7), which were very similar to those from patients infected by *C. jejuni*. Whether our *mapA* sequences of *C. jejuni* were different strains from those found in Alaska (7) or

from those found in other animals and whether the *C. jejuni* strains in our study were infectious to humans require further investigation to determine and should form an important part of future risk assessments of crane migration.

16S rRNA gene-based *Campylobacter* species sequences showed consistent results among crane excreta, water, and sediments in the central Platte River, Nebraska; i.e., they were 99% identical to the same bacterial strain, *C. jejuni* subsp. *jejuni* ICD-CCJ07001 (Table 1). Further, peaks of *Campylobacter* qPCR signals in water (and also in sediment) corresponded to the high presence of the crane population, and there were significant differences in *Campylobacter* qPCR signals between the premigration and migration periods in water (Fig. 3) and sediments (see Fig. S1 in the supplemental material), suggesting that *Campylobacter* bacteria shed by sandhill cranes had a significant impact on river water and sediment quality. In addition to this possible primary source, there also appear to be other sources, such as humans, cattle, and snow geese, of *Campylobacter* contamination of Platte River water. For the former sources, the evidence was as follows: (i) *Bacteroidetes* markers for humans and cattle were detected during the investigation, (ii) sequences of *Bacteroidetes* specific to humans and cattle were identified from water samples, and (iii) during the absence of cranes, the three bacterial groups were positively related to *Bacteroidetes*. As for the last source, in 2010, snow geese migrated to the Platte River during the same period as sandhill cranes but left before late March and were identified at all three locations. As discussed above, the snow goose excreta were shed at the riverside and in the water, and the same type of *C. jejuni* was detected from the excreta. Although sandhill crane marker was not detected at Overton, sandhill cranes and snow geese were observed around crop fields and the riverside; therefore, the qPCR signals of *Campylobacter* spp. detected at a lower level at the site could be from mixed sources from waterfowl and mammals, as human and cattle markers were detected (see Table S4 in the supplemental material).

The impact of crane excreta on Platte River water quality was also quantified by qPCR analysis of fecal indicator bacteria (i.e., *Enterococcus* spp., *E. coli*, and *Bacteroidetes*) and the sandhill crane fecal marker. Both *E. coli* and *Enterococcus* levels seemed significantly impacted, increasing approximately 11 to 90 times during the migration period compared to before and after migration (see Table S8 in the supplemental material). Several studies have shown that waterfowl contributed a substantial amount of fecal coliforms to surface recreational waters (44, 45). The positive correlation of sandhill crane marker signals with *E. coli* and *Enterococcus* in water and excreta strongly suggests that the quantity fluctuations of these bacterial groups over the migration period were heavily influenced by the crane fecal loadings. The other known sources, like humans and cattle, did not significantly increase in occurrence compared to the crane, according to *Bacteroidetes*-based human- and cattle-targeted PCR results. On the other hand, neither cranes nor, possibly, snow geese appeared to significantly impact *Bacteroidetes* quantity in water (based on qPCR signals between putative crane markers and *Bacteroidetes* spp. [$R^2 = 0.064$]). This lack of *Bacteroidetes* impact was consistent with other lines of evidence. The first was the lack of detectable *Bacteroidetes* marker in crane excreta, and only 3.2% of the 16S rRNA gene library sequences ($n = 1,151$) were similar to those of *Bacteroidetes* members (29). Second, most *Bacteroidetes*-like sequences (>82.5%) might be from unidentified sources in water

rather than from crane excreta (7.4%) or other known sources (human and cattle). Therefore, the large quantity of *Bacteroidetes* organisms in water was more likely from other, unidentified source(s) (see Fig. S2 in the supplemental material). It should be noted that the quantity of *Bacteroidetes* organisms was also smaller during than before migration (Fig. 3A and E). In managing pathogen risks in this section of the Platte River, it is important to mitigate both human (septage) and cattle manure runoff, as both have been determined to contribute more human-infective pathogens (when normalized for *E. coli* or *Enterococcus* species densities) than bird excreta with similar *Campylobacter* occurrences (as identified in sandhill cranes in the current study) (46, 47). Also, while *Bacteroidetes* markers have been used to identify human and cattle fecal contamination, the group may not be useful for evaluating waterfowl fecal contamination (35, 47). Finally, while both viable and dead cells are detected, the interpretation of qPCR results in risk management decision making provides a conservative estimate that is suitable for an initial-screening-level assessment (36).

Summary. Overall, sandhill crane migration via the central Platte River in Nebraska resulted in a significant increase in fecal indicator bacteria, especially *E. coli* and *Enterococcus* spp. in surface water and sediments, along with *C. jejuni*. Although public health risks associated with sandhill cranes and other waterfowl surrounding those areas are unknown, the increase in environmental *C. jejuni* isolates suggests that risks may be higher than previously estimated for other waterfowl, such as seagulls (16, 25). Furthermore, the contamination by *C. jejuni* could be a risk to tourists and consumers/handlers of crops through irrigation and via local drinking water consumption.

ACKNOWLEDGMENTS

We thank Dennis Lye, Katharine O'Connell, and Asja Korajkic (U.S. EPA, Cincinnati, OH) and Matt Moser (USGS, Lincoln, NE) for sampling and technical support.

Although this work was reviewed by the EPA and approved for publication, it does not necessarily reflect official agency policy. The mention of products or trade names does not constitute a recommendation for use.

REFERENCES

- Boyle WA, Conway CJ. 2007. Why migrate? A test of the evolutionary precursor hypothesis. *Am. Nat.* 169:344–359.
- Alderisio KA, DeLuca N. 1999. Seasonal enumeration of fecal coliform bacteria from the feces of ring-billed gulls (*Larus delawarensis*) and Canada Geese (*Branta canadensis*). *Appl. Environ. Microbiol.* 65:5628–5630.
- Dolejská M, Bierošová B, Kohoutová L, Literák I, Čížek A. 2009. Antibiotic-resistant *Salmonella* and *Escherichia coli* isolates with integrons and extended-spectrum beta-lactamases in surface water and sympatric black-headed gulls. *J. Appl. Microbiol.* 106:1941–1950.
- Graczyk TK, Majewska AC, Schwab KJ. 2008. The role of birds in dissemination of human waterborne enteropathogens. *Trends Parasitol.* 24:55–59.
- Hoar BM, Whiteside DP, Ward L, Douglas Inglis G, Morck DW. 2007. Evaluation of the enteric microflora of captive whooping cranes (*Grus americana*) and Sandhill cranes (*Grus canadensis*). *Zoo Biol.* 26:141–153.
- Broman T, Palmgren H, Bergstrom S, Sellin M, Waldenström J, Danielsson-Tham ML, Olsen B. 2002. *Campylobacter jejuni* in black-headed gulls (*Larus ridibundus*): prevalence, genotypes, and influence on *C. jejuni* epidemiology. *J. Clin. Microbiol.* 40:4594–4602.
- Gardner TJ, Fitzgerald C, Xavier C, Klein R, Pruckler J, Stroika S, McLaughlin JB. 2011. Outbreak of campylobacteriosis associated with consumption of raw peas. *Clin. Infect. Dis.* 53:26–32.
- Medema GJ, Baher M, Schnets FM. 1997. Survival of *Cryptosporidium parvum*, *Escherichia coli*, faecal streptococci, and *Clostridium perfringens* in

- river water: influence of temperature and autochthonous microorganisms. *Water Sci. Technol.* 35:249–252.
9. Reed KD, Meece JK, Henkel JS, Shukla SK. 2003. Birds, migration and emerging zoonoses: West Nile virus, Lyme disease, influenza A and enteropathogens. *Clin. Med. Res.* 1:5–12.
 10. Ahmed W, Hodggers L, Sidhu JPS, Toze S. 2012. Fecal indicators and zoonotic pathogens in household drinking water taps fed from rainwater tanks in southeast Queensland, Australia. *Appl. Environ. Microbiol.* 78: 219–226.
 11. Fallacara DM, Monahan CM, Morishita TY, Bremer CA, Wack RF. 2004. Survey of parasites and bacterial pathogens from free-living waterfowl in zoological settings. *Avian Dis.* 48:759–767.
 12. Pacha RE, Clark GW, Williams EA, Carter AM. 1988. Migratory birds of central Washington as reservoirs of *Campylobacter jejuni*. *Can. J. Microbiol.* 34:80–82.
 13. Waldenström J, On SL, Ottvall R, Hasselquist D, Olsen B. 2007. Species diversity of campylobacters in a wild bird community in Sweden. *J. Appl. Microbiol.* 102:424–432.
 14. Benton C, Khan F, Monaghan P, Richards WN, Shedden CB. 1983. Contamination of a major water supply by gulls (*Larus* spp.): a study of the problem and remedial action taken. *Water Res.* 17:789–798.
 15. Valiela I, Alber M, LaMontagne M. 1991. Fecal coliform loadings and stocks in Buttermilk Bay, Massachusetts and management implications. *Environ. Manag.* 15:659–674.
 16. Roser DJ, Davies CM, Ashbolt NJ, Morison P. 2006. Microbial exposure assessment of an urban recreational lake: a case study of the application of new risk-based guidelines. *Water Sci. Technol.* 54:245–252.
 17. Krapu GL, Facey DE, Fritzell EK, Johnson DH. 1984. Habitat use by migrant sandhill cranes in Nebraska. *J. Wildl. Manage.* 48:407–417.
 18. Inglis GD, Hoar BM, Whiteside DP, Morck DW. 2007. *Campylobacter canadensis* sp. nov., from captive whooping cranes in Canada. *Int. J. Syst. Evol. Microbiol.* 57:2636–2644.
 19. Homan Y, Muroga N, Taharaguchi S, Chuma T, Takase K, Shioya K, Mohri S. 2005. *Salmonella* Typhimurium isolated from the feces of wild cranes from the Izumi plain, Kagoshima. *J. Jpn. Vet. Med. Assoc.* 58:411–414.
 20. Kitadai N, Ninomiya N, Murase T, Obi T, Takase K. 2010. *Salmonella* isolated from the feces of migrating cranes at the Izumi Plain (2002–2008): serotype, antibiotic sensitivity and PFGE type. *J. Vet. Med. Sci.* 72:939–942.
 21. Thoen CO, Himes EM, Barrett RE. 1977. *Mycobacterium avium* serotype 1 infection in a Sandhill crane (*Grus canadensis*). *J. Wildl. Dis.* 13:40–42.
 22. Urakawa H, Martens-Habbena W, Stahl DA. 2010. High abundance of ammonia-oxidizing Archaea in coastal waters, determined using a modified DNA extraction method. *Appl. Environ. Microbiol.* 76:2129–2135.
 23. Yan PY, Hou HS, Chen T, Zhang SH, Sun WJ. 2012. Methods for extraction of microorganism DNA from glacier surface snow. *Sci. Cold Arid Reg.* 4:0484–0489.
 24. Lund M, Nordentoft S, Pedersen K, Madsen M. 2004. Detection of *Campylobacter* spp. in chicken fecal samples by real-time PCR. *J. Clin. Microbiol.* 42:5125–5132.
 25. Haugland RA, Siefring SC, Wymer LJ, Brenner KP, Dufour AP. 2005. Comparison of *Enterococcus* measurements in freshwater at two recreational beaches by quantitative polymerase chain reaction and membrane filter culture analysis. *Water Res.* 39:559–568.
 26. Dick LK, Field KG. 2004. Rapid estimation of numbers of fecal *Bacteroidetes* by use of a quantitative PCR assay for 16S rRNA genes. *Appl. Environ. Microbiol.* 70:5695–5697.
 27. Ludwig W, Schleifer KH. 2000. How quantitative is quantitative PCR with respect to cell counts? *Syst. Appl. Microbiol.* 23:556–562.
 28. Lu J, Ryu H, Santo Domingo JW, Griffith JF, Ashbolt N. 2011. Molecular detection of *Campylobacter* spp. in California gull (*Larus californicus*) excreta. *Appl. Environ. Microbiol.* 77:5034–5039.
 29. Ryu R, Lu J, Vogel J, Elk M, Chavez-Ramirez F, Ashbolt N, Santo Domingo J. 2012. Development of a novel crane-specific qPCR assay and molecular characterization of bacterial populations in Sandhill crane (*Grus canadensis*) and snow goose (*Chen caerulescens*). *Appl. Environ. Microbiol.* 78:4338–4345.
 30. Linton D, Owen RJ, Stanley J. 1996. Rapid identification by PCR of the genus *Campylobacter* and of five species enteropathogenic for man and animals. *Res. Microbiol.* 147:707–718.
 31. Stucki URS, Joachim F, Nicolet J, Burnens AP. 1995. Identification of *Campylobacter jejuni* on the basis of a species gene that encodes a membrane protein. *J. Clin. Microbiol.* 33:855–859.
 32. Gonzalez I, Grant KA, Richardson PT, Park SF, Collins MD. 1997. Specific identification of the enteropathogens *Campylobacter jejuni* and *Campylobacter coli* using a PCR test based on the *ceuE* gene encoding a putative virulence determinant. *J. Clin. Microbiol.* 35:759–763.
 33. Khan IUH, Edge TA. 2007. Development of a novel triplex PCR assay for the detection and differentiation of thermophilic species of *Campylobacter* using 16 S–23 S rDNA internal transcribed spacer (ITS) region. *J. Appl. Microbiol.* 103:2561–2569.
 34. Tamura K, Dudley KJ, Nei M, Kumar S. 2007. MEGA4: Molecular Evolutionary Genetics Analysis (MEGA) software version 4.0. *Mol. Biol. Evol.* 24:1596–1599.
 35. Bernhard AE, Field KG. 2000. A PCR assay to discriminate human and ruminant feces on the basis of host differences in *Bacteroides-Prevotella* genes encoding 16S rRNA. *Appl. Environ. Microbiol.* 66:4571–4574.
 36. Klein M, Brown L, Ashbolt NJ, Stuetz RM, Roser DJ. 2011. Inactivation of indicators and pathogens in cattle feedlot manures and compost as determined by molecular and culture assays. *FEMS Microbiol. Ecol.* 77: 200–210.
 37. Williams LK, Sait LC, Cogan TA, Jørgensen F, Grogono-Thomas R, Humphrey TJ. 2012. Enrichment culture can bias the isolation of *Campylobacter* subtypes. *Epidemiol. Infect.* 140:1227–1235.
 38. Gorkiewicz G, Feierl G, Schober C, Dieber F, Köfer J, Zechner R, Zechner EL. 2003. Species-specific identification of campylobacters by partial 16S rRNA gene sequencing. *J. Clin. Microbiol.* 41:2537–2546.
 39. Waldenström J, Broman T, Carlsson I, Hasselquist D, Achterberg RP, Wagenaar JA, Olsen B. 2002. Prevalence of *Campylobacter jejuni*, *Campylobacter lari*, and *Campylobacter coli* in different ecological guilds and taxa of migrating birds. *Appl. Environ. Microbiol.* 68:5911–5917.
 40. Cramp S, Simmons KFL (ed). 1990. The birds of the Western Palearctic, vol III. Oxford University Press, Oxford, United Kingdom.
 41. Gerner-Smidt P, Stroika SG, Fitzgerald C. 2008. National molecular subtyping network for food-borne bacterial disease surveillance in the United States, p 277–285. In Nachamkin I, Szymanski CM, Blaser MJ (ed), *Campylobacter*, 3rd ed. ASM Press, Washington, DC.
 42. Champion OL, Gaunt MW, Gundogdu O, Elmi A, Witney AA, Hinds J, Dorrell N, Wren BW. 2005. Comparative phylogenomics of the food-borne pathogen *Campylobacter jejuni* reveals genetic markers predictive of infection source. *Proc. Natl. Acad. Sci. U. S. A.* 102:16043–16048.
 43. Colles FM, McCarthy ND, Howe JC, Devereux CL, Gosler AG, Maiden MC. 2009. Dynamics of *Campylobacter* colonization of a natural host, *Sturnus vulgaris* (European starling). *Environ. Microbiol.* 11:258–267.
 44. Hussong D, Damaré JM, Limpert RJ, Sladen WJ, Weiner RM, Colwell RR. 1979. Microbial impact of Canada geese (*Branta canadensis*) and whistling swans (*Cygnus columbianus columbianus*) on aquatic ecosystems. *Appl. Environ. Microbiol.* 37:14–20.
 45. Standridge JH, Delfino JJ, Kleppe LB, Butler R. 1979. Effect of waterfowl (*Anas platyrhynchos*) on indicator bacteria populations in a recreational lake, Madison, Wisconsin. *Appl. Environ. Microbiol.* 38:547–550.
 46. Schoen ME, Ashbolt NJ. 2010. Assessing pathogen risk to swimmers at non-sewage impacted recreational beaches. *Environ. Sci. Technol.* 44: 2286–2291.
 47. Soller JA, Schoen ME, Bartrand T, Ravenscroft JE, Ashbolt NJ. 2010. Estimated human health risks from exposure to recreational waters impacted by human and non-human sources of faecal contamination. *Water Res.* 44:4674–4691.

TABLE S1 PCR oligonucleotide primer list used in this study

Species	Genes	Sequences (5'-3')	Reference
Campy-genus specific	16S rRNA	GGA TGA CAC TTT TCG GAG C CAT TGT AGC ACG TGT GTC	Linton et al. (1996)
<i>C. jejuni</i>	<i>mapA</i>	GGA CGG TAA CTA GTT TAG TAT T CTA TTT TAT TTT TGA GTG CTT GTG	Stucki et al. (1995)
<i>C. coli</i>	<i>ceuE</i>	AAT TGA AAA TTG CTC CAA CTA TG TGA TTT TAT TAT TTG TAG CAG CG	Gonzalez et al. (1997)
<i>C. lari</i>	16S–23 S rRNA ITS region	CTT ACT TTA GGT TTT AAG ACC CAA TAA AAC CTT ACT ATC TC	Khan and Edge (2007)
<i>Campylobacter</i> spp.	16S rRNA	CACGTGCTACAATGGCATAT GGCTTCATGCTCTCGAGTT FAM-CAGAGAACAATCCGAACTGGGACA-TAMRA	Lund et al. (2004)
<i>Catelicoccus</i> -like organisms	16S rRNA	GGTGCTTGCACCGACYTAAG CTCTCACACGTGTTCCTTC	Ryu, et al. (2012)
<i>Enterococcus</i> spp.	23S rRNA	AGAAATTCCAAACGAACTTG CAGTGCTCTACCTCCATCATT FAM-TGGTTCTCTCCGAAATA GCTTTAGGGCTA-TAMRA	Haugland et al. (2005)
<i>Escherichia coli</i>	23S rRNA	CATAAGCGTCGCTGCCG AAAGAAAGCGTAATAGCTCACTGGTC FAM-TACATCTTCCGCGCAGGCCGACT-TAMRA	Ludwig and Scheifer (2000)
<i>Bacteroidetes</i> spp.	16S rRNA (HF183-708R)	ATCATGAGTTCACATGTCCCG TCAAATGATACATAGTGCGATAC	Bernhard and Field (2000)
<i>Bacteroidetes</i> spp.	16S rRNA (CF12-8-708R)	CAATCGGAGTTCTTCGTG TCAAATGATACATAGTGCGATAC	Bernhard and Field (2000)
<i>Bacteroidetes</i> spp.	16S rRNA	AACGCTAGCTACAGGCTTAACA ACGCTACTTGGCTGGTTC FAM-CAATATTCCTCACTGCTGCCTCCCGTA-TAMRA	Dick and Field. 2004

TABLE S2 PCR results of *Campylobacter* spp. (Camp) and *C. jejuni* (*mapA*) in Sandhill crane excreta

Date	Site	Camp (Bolton broth)	<i>mapA</i> (Bolton broth)	Camp (direct DNA)	<i>mapA</i> (direct DNA)
3/15/2010	C1	-	-	-	-
3/15/2010	C2	-	-	-	-
3/15/2010	C3	-	-	-	-
3/15/2010	C4	-	-	+	+
3/15/2010	C5	-	-	+	+
3/15/2010	C6	-	-	-	-
3/25/2010	C7			-	-
3/25/2010	C8			-	-
3/25/2010	C9			-	-
3/25/2010	C10			-	-
3/25/2010	C11			+	+
3/25/2010	C12			-	-
3/25/2010	C13			-	-
3/25/2010	C14			-	-
3/25/2010	C15			-	-
3/25/2010	C16			-	-
3/25/2010	C17			-	-
3/25/2010	C18			-	-
3/25/2010	C19			-	-
3/25/2010	C20			+	-
3/25/2010	C21			-	-
3/25/2010	C22			-	-
3/18/2010	C146	+	+	+	+
3/18/2010	C147	+	+	+	+
3/18/2010	C148	-	-	-	-
3/18/2010	C149	-	-	-	-
3/18/2010	C150	+	+	+	+

TABLE S2 Continue:

Date	Site	Camp (Bolton broth)	<i>mapA</i> (Bolton broth)	Camp <i>mapA</i> (filtered)	<i>mapA</i> (filtered)
3/18/2010	C151	-	-	+	-
3/18/2010	C152	-	-	+	-
3/18/2010	C153	-	-	+	+
3/18/2010	C154	-	-	+	+
3/18/2010	C155	-	-	+	+
3/18/2010	C156	-	-	-	-
3/18/2010	C157	-	-	+	+
3/18/2010	C158	-	-	+	-
3/18/2010	C159	-	-	-	-
3/18/2010	C160	-	-	-	-
3/18/2010	C164	+	+	-	-
4/5/2010	C426	-	-	+	+
4/5/2010	C427	-	-	+	+
4/5/2010	C428	+	-	+	-
4/5/2010	C429	-	-	-	-
4/5/2010	C430	-	-	-	-
4/5/2010	C431	+	+	+	+
4/5/2010	C432	-	-	-	-
4/5/2010	C433	-	-	-	-
4/5/2010	C434	-	-	-	-
4/5/2010	C435	+	-	+	-
4/5/2010	C436	+	-	+	-
4/5/2010	C437	-	-	+	+
4/5/2010	C438	+	-	+	-
4/5/2010	C439	-	+	-	-
4/5/2010	C440	+	+	+	+
4/5/2010	C441	+	+	+	+
4/5/2010	C442	+	+	+	-
4/5/2010	C443	+	+	+	-
4/5/2010	C444	-	-	-	-
4/5/2010	C445	-	-	+	+
4/5/2010	C446	+	+	+	+
4/5/2010	C447	+	+	+	-
4/5/2010	C448	-	+	-	-
4/5/2010	C449	-	-	+	-
4/5/2010	C450	-	-	+	+
4/5/2010	C451	-	-	-	-
				31(48.4	
Total Counts				%)	19(29.7%)

TABLE S3 PCR results of *Campylobacter* spp. (Camp) and *C. jejuni* (*mapA*) in snow goose feces

Date	Site	Camp (Bolton broth)	<i>mapA</i> (Bolton broth)	Camp (direct DNA)	<i>mapA</i> (direct DNA)
3/15/2010	G20	-	-	-	-
3/15/2010	G21	+	-	+	+
3/15/2010	G22	+	-	+	-
3/15/2010	G23	-	-	-	-
3/15/2010	G24	-	-	-	-
3/15/2010	G25	-	-	-	-
3/15/2010	G26	-	-	-	-
3/15/2010	G27	-	-	-	-
3/15/2010	G28	-	-	-	-
3/15/2010	G29	-	-	-	-
3/15/2010	G30	-	-	-	-
3/15/2010	G31	-	-	-	-
3/15/2010	G32	-	-	-	-
3/15/2010	G33	-	-	-	-
3/15/2010	G34	-	-	-	-
3/15/2010	G35	-	-	-	-
3/15/2010	G36	-	-	-	-
3/15/2010	G37	-	-	-	-
3/15/2010	G38	-	-	-	-
3/15/2010	G39	-	-	-	-
3/15/2010	G40	-	-	-	-
3/15/2010	G41	-	-	-	-
Total Counts				2 (9.1%)	1(4.5%)

TABLE S4 PCR results of *Campylobacter* spp. (Camp), *C. jejuni* (*mapA*), human (HF183) and cattle (CF128) in water samples

Date	Site	Camp (Bolton broth)	<i>mapA</i> (Bolton broth)	Camp (direct DNA)	<i>mapA</i> (direct DNA)	CF128	HF183
1/18/2010	Overton	-	-	-	-	++	++
1/18/2010	Denman	-	-	-	-	+	++
1/18/2010	Grand island	-	-	-	-	-	-
2/1/2010	Overton	-	-	-	-	-	-
2/1/2010	Denman	-	-	-	-	-	-
2/1/2010	Grand island	-	-	-	-	-	-
2/15/2010	Overton	-	-	-	-	++	-
2/15/2010	Denman	-	-	-	-	++	+
2/15/2010	Grand island	-	-	-	-	-	-
3/1/2010	Overton	-	-	-	-	-	-
3/1/2010	Denman	-	-	-	-	-	-
3/1/2010	Grand island	-	-	-	-	-	-
3/8/2010	Overton	-	-	-	-	-	-
3/8/2010	Denman	-	-	-	-	-	-
3/8/2010	Grand island	-	-	-	-	-	+
3/15/2010	Overton	-	-	-	-	-	-
3/15/2010	Denman	-	-	-	-	-	-
3/15/2010	Grand island	-	-	-	-	-	-
3/18/2010	Overton	+	+	+	+	-	-
3/18/2010	Denman	+	+	+	+	-	++
3/18/2010	Grand island	+	+	+	+	-	-
3/22/2010	Overton	-	-	+	+	+	++
3/22/2010	Denman	-	-	+	+	-	-
3/22/2010	Grand island	-	-	+	-	+	++
3/24/2010	Overton	-	-	+	-	+	-
3/24/2010	Denman	-	-	-	-	+	-
3/24/2010	Grand island	-	-	-	-	-	-
3/29/2010	Overton	-	-	-	-	-	-
3/29/2010	Denman	-	-	+	-	-	-
3/29/2010	Grand island	-	-	+	-	-	-
4/5/2010	Overton	-	-	+	-	++	++
4/5/2010	Denman	-	-	+	+	+	++
4/5/2010	Grand island	-	-	-	-	-	-

TABLE S4 Continue:

Date	Site	Camp (Bolton broth)	<i>mapA</i> (Bolton broth)	Camp (direct DNA)	<i>mapA</i> (direct DNA)	CF128	HF183
4/13/2010	Denman	-	-	-	-	-	-
4/13/2010	Grand island	-	-	-	-	-	-
4/21/2010	Overton	-	-	-	-	-	-
4/21/2010	Denman	-	-	-	-	-	-
4/21/2010	Grand island	-	-	-	-	-	-
4/26/2010	Overton	-	-	-	-	+	+
4/26/2010	Denman	-	-	-	-	+	++
4/26/2010	Grand island	-	-	-	-	-	-
5/24/2010	Overton	-	-	-	-	-	-
5/24/2010	Denman	-	-	-	-	-	-
5/24/2010	Grand island	-	-	-	-	-	-
Total Counts		3	3	11	6		
Before		0	0	0	0	44.44	33.33
During			12.5	12.5	45.83	25	25.00
After		0	0	0	0	33.33	33.33
Overall (%)				24.44	13.33	26.67	26.67

TABLE S5 PCR results of *Campylobacter* spp. (Camp) and *C. jejuni* (*mapA*) in sediment samples

Date	Site	Camp (Bolton broth)	<i>mapA</i> (Bolton broth)	Camp (direct DNA)	<i>mapA</i> (direct DNA)
3/8/2010	Sediment	-	-	-	-
3/15/2010	Sediment	-	-	-	-
3/18/2010	Sediment	+	+	+	+
3/22/2010	Sediment	-	-	-	-
3/24/2010	Sediment	-	-	-	-
3/29/2010	Sediment1	-	-	-	-
4/5/2010	Sediment	-	-	-	-
4/13/2010	Sediment1	-	-	-	-
4/21/2010	Sediment1	-	-	-	-
4/26/2010	Sediment1	-	-	-	-
5/24/2010	Sediment1	-	-	-	-
Total Counts				1 (11.1%)	1 (11.1%)

TABLE S6 qPCR standard curve parameters and detection limits for *Campylobacter jejuni* LMG 8842 in different matrices

	Molecular scale water	Sample water ^a	Crane excreta ^a	Sediment
Linear equation ^a	-3.588x + 40.53	-3.373x + 38.21	-3.464x + 43.36	-3.554x + 41.82
Correlation R ²	0.979	0.964	0.964	0.983
qPCR Efficiency ^b	90%	98%	94%	91%
Detection limit (cell equivalence mL ⁻¹)	100	100	100	100

^aSample water and crane excreta were tested negative for *Campylobacter jejuni*. ^bStandard curve with 3 replicates
(^aEfficiency was $100 \times (10^{(-1/\text{slope})} - 1)$)

TABLE S7 qPCR standard curve parameters and detection limits by spiking bacterial surrogates into filtered Platte River water for different assays

Surrogates	<i>Bacteriodes</i>			
	<i>Escherichia coli</i> K12 MG1655	<i>Enterococcus faecalis</i> ATCC 29212	<i>thetaitaomicron</i> ATCC 29741	<i>Catelllicoccus</i> -like organisms
Linear equation ^a	-2.956x + 35.16	-3.578x + 42.41	-3.212x + 44.53	-3.580x + 39.50
Correlation R ²	0.996	0.995	0.942	0.990
qPCR Efficiency ^b	118%	90%	105%	90%
Detection limit (cell equivalence mL ⁻¹)	100	520	100	0.1 ^b

^astandard curve with 3 replicates (^aEfficiency was $100 \times (10^{(-1/\text{slope})} - 1)$); ^bpg/reaction.

TABLE S8 Mean quantity and fold changes of *Campylobacter* spp. and fecal indicators before-, during- and after Sandhill crane migration

Migration period	<i>Campylobacter</i> spp.	<i>Bacteroidetes</i> spp.	<i>Enterococcus</i> spp.	<i>E. coli</i>
Jan-Feb15 (Before: CE/100 mL)	194	1×10^6	5×10^4	86
Mar1-Apr5 (During; CE/100 mL)	1100	6×10^5	6×10^5	1580
Apr13-May24 (After: CE/100 mL)	0	1×10^5	7×10^3	55
Ratio (During/Before)	6	1	11	18
During/After)	Not available	5	90	29

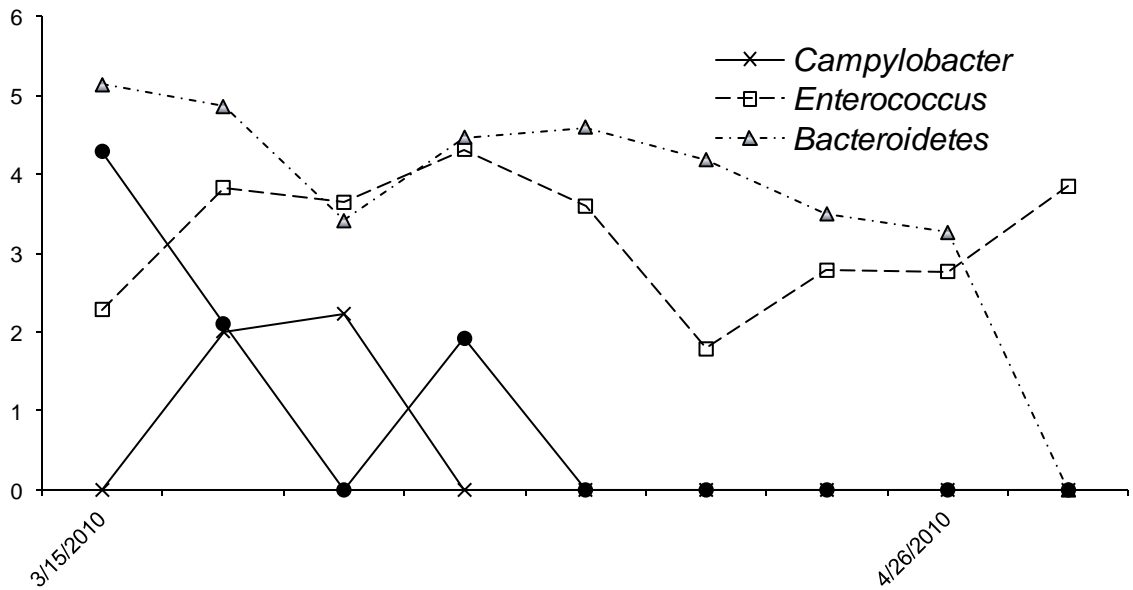


FIG S1 Variation in the relative abundance of *Campylobacter* spp., fecal indicator bacteria (*E. coli*, *Enterococcus* spp. and *Bacteroidetes* spp.) in Central Platte River sediment samples during - (Mar – Apr5) and after (Apr14 – May) Sandhill crane migration

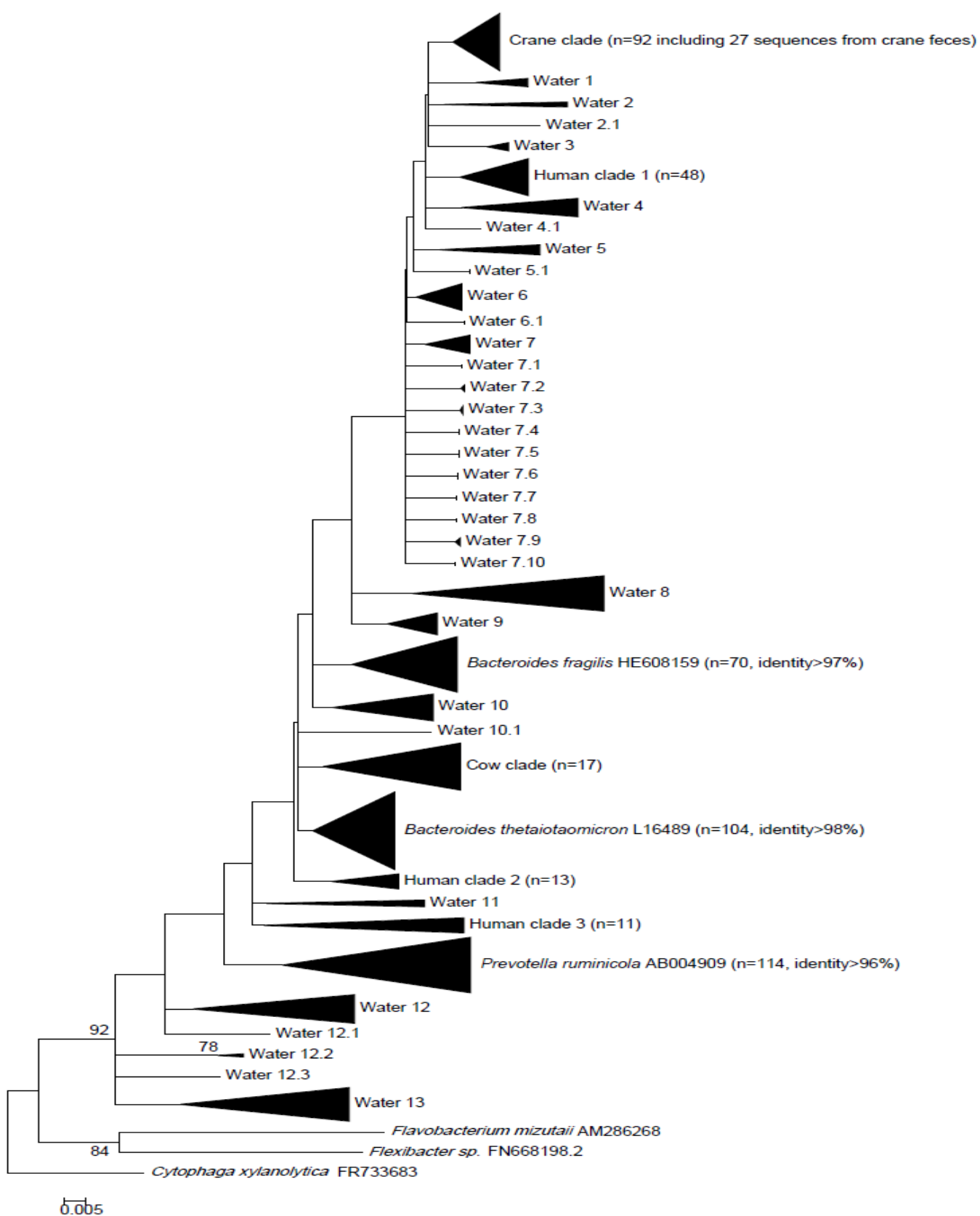


FIG S2 Unrooted neighbor-joining tree of 16S rRNA gene sequences (n=878) for *Bacteroidales* including samples of water (n=851) and Sandhill crane excreta (n=27), created with MEGA 4.1 (2 %₀ divergence)