


1990

# Significant Rises and Declines in Nebraska Groundwater Levels (from Pre-Development as of Fall 1989)/Registered Irrigation Wells in Nebraska (as of January 1, 1990)

Mark Burbach

University of Nebraska-Lincoln, mburbach1@unl.edu

Follow this and additional works at: <http://digitalcommons.unl.edu/conservationsurvey>

 Part of the [Geology Commons](#), [Geomorphology Commons](#), [Hydrology Commons](#), [Paleontology Commons](#), [Sedimentology Commons](#), [Soil Science Commons](#), and the [Stratigraphy Commons](#)

---

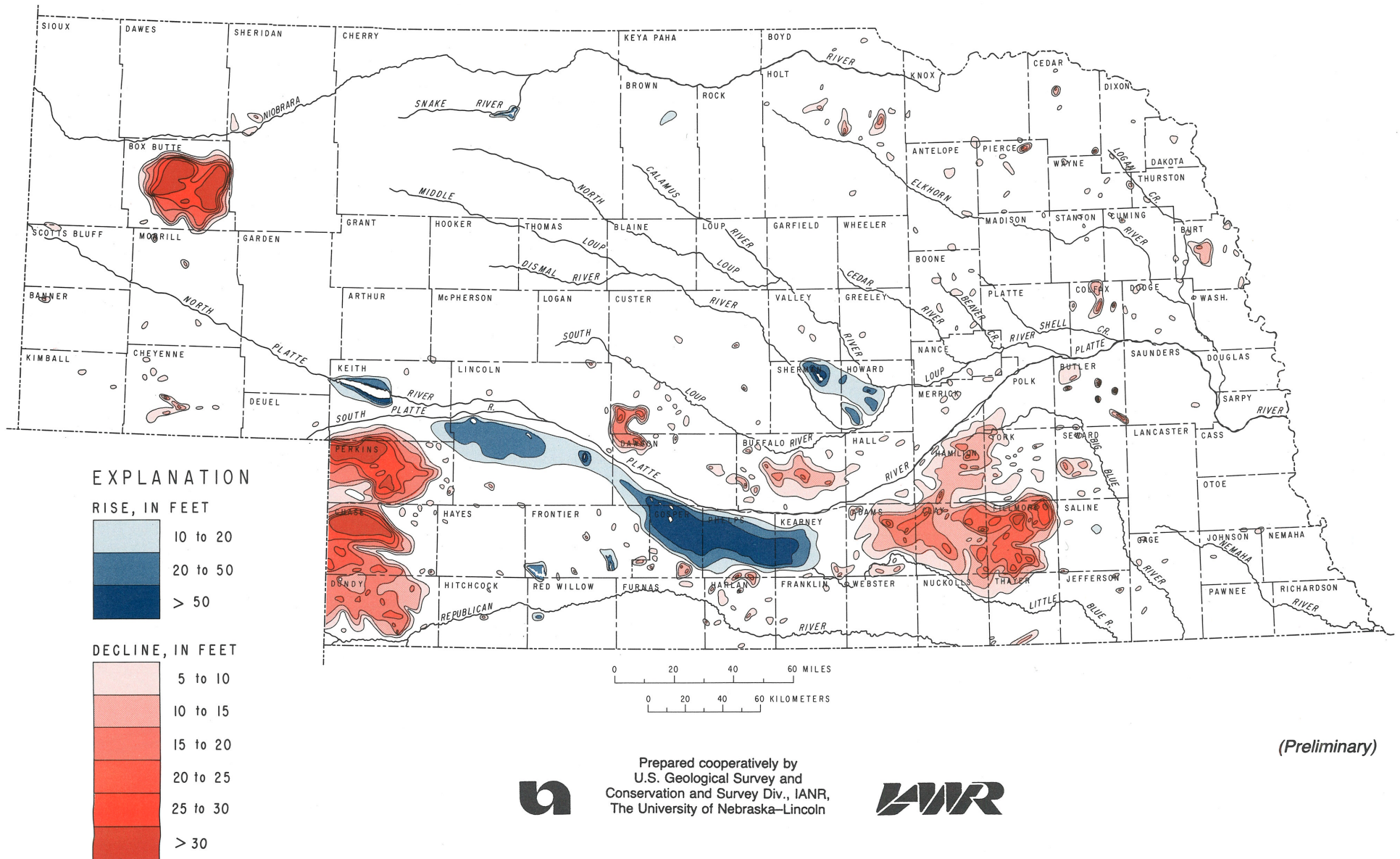
Burbach, Mark, "Significant Rises and Declines in Nebraska Groundwater Levels (from Pre-Development as of Fall 1989)/Registered Irrigation Wells in Nebraska (as of January 1, 1990)" (1990). *Conservation and Survey Division*. 210.

<http://digitalcommons.unl.edu/conservationsurvey/210>

This Article is brought to you for free and open access by the Natural Resources, School of at DigitalCommons@University of Nebraska - Lincoln. It has been accepted for inclusion in Conservation and Survey Division by an authorized administrator of DigitalCommons@University of Nebraska - Lincoln.

# Significant Rises and Declines in Nebraska Groundwater Levels

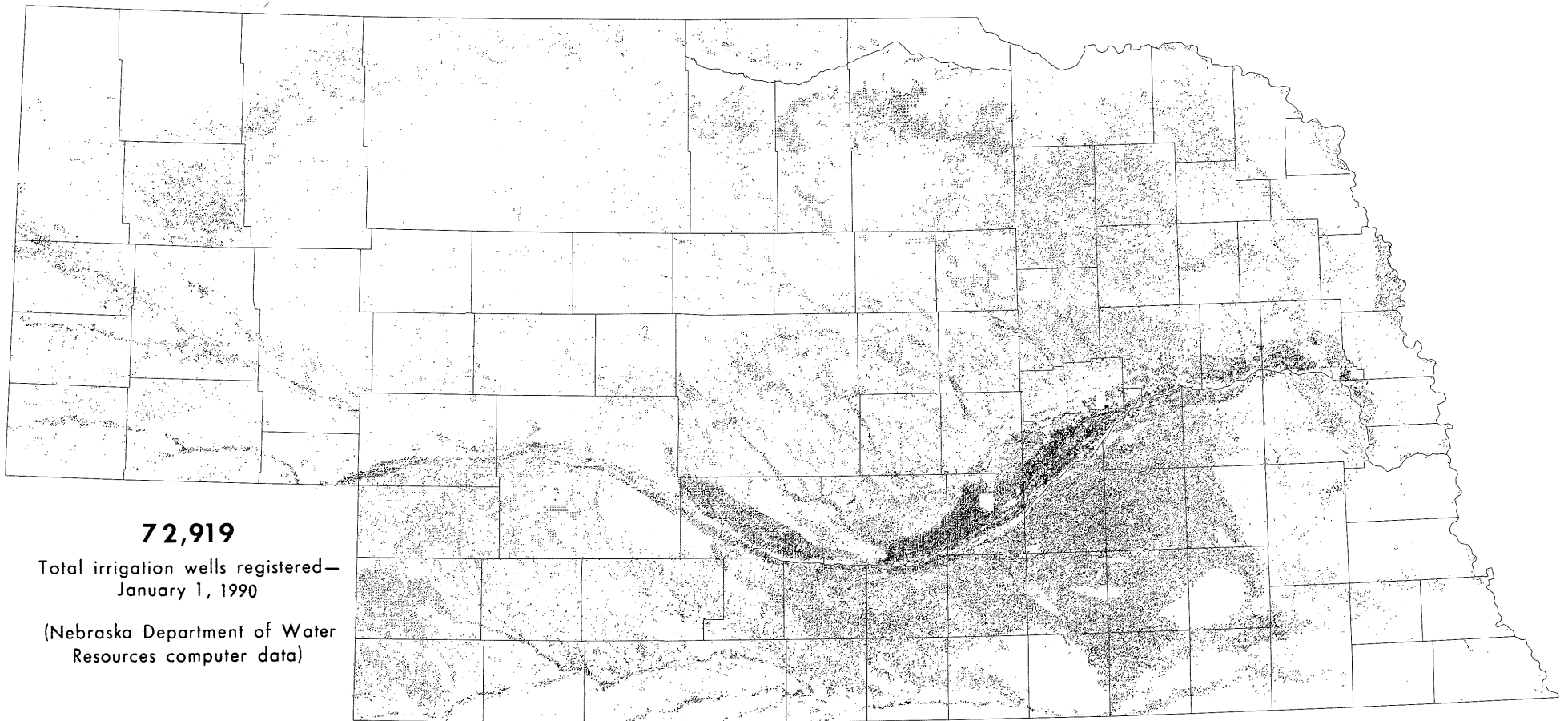
(from predevelopment as of fall 1989)



GM-61

# Registered Irrigation Wells in Nebraska

(as of January 1, 1990)



**72,919**

Total irrigation wells registered—  
January 1, 1990

(Nebraska Department of Water  
Resources computer data)



Prepared cooperatively by  
U.S. Geological Survey and  
Conservation and Survey Div., IANR,  
The University of Nebraska-Lincoln

