

2013

## Groundwater-level Changes in Nebraska - Spring 2012 to Spring 2013

A. Young

*University of Nebraska-Lincoln*, ayoung3@unl.edu

M. E. Burbach

*University of Nebraska-Lincoln*, mburbach1@unl.edu

L. M. Howard

*University of Nebraska - Lincoln*, lhoward3@unl.edu

Follow this and additional works at: <http://digitalcommons.unl.edu/conservationsurvey>



Part of the [Geology Commons](#), [Geomorphology Commons](#), [Hydrology Commons](#), [Paleontology Commons](#), [Sedimentology Commons](#), [Soil Science Commons](#), and the [Stratigraphy Commons](#)

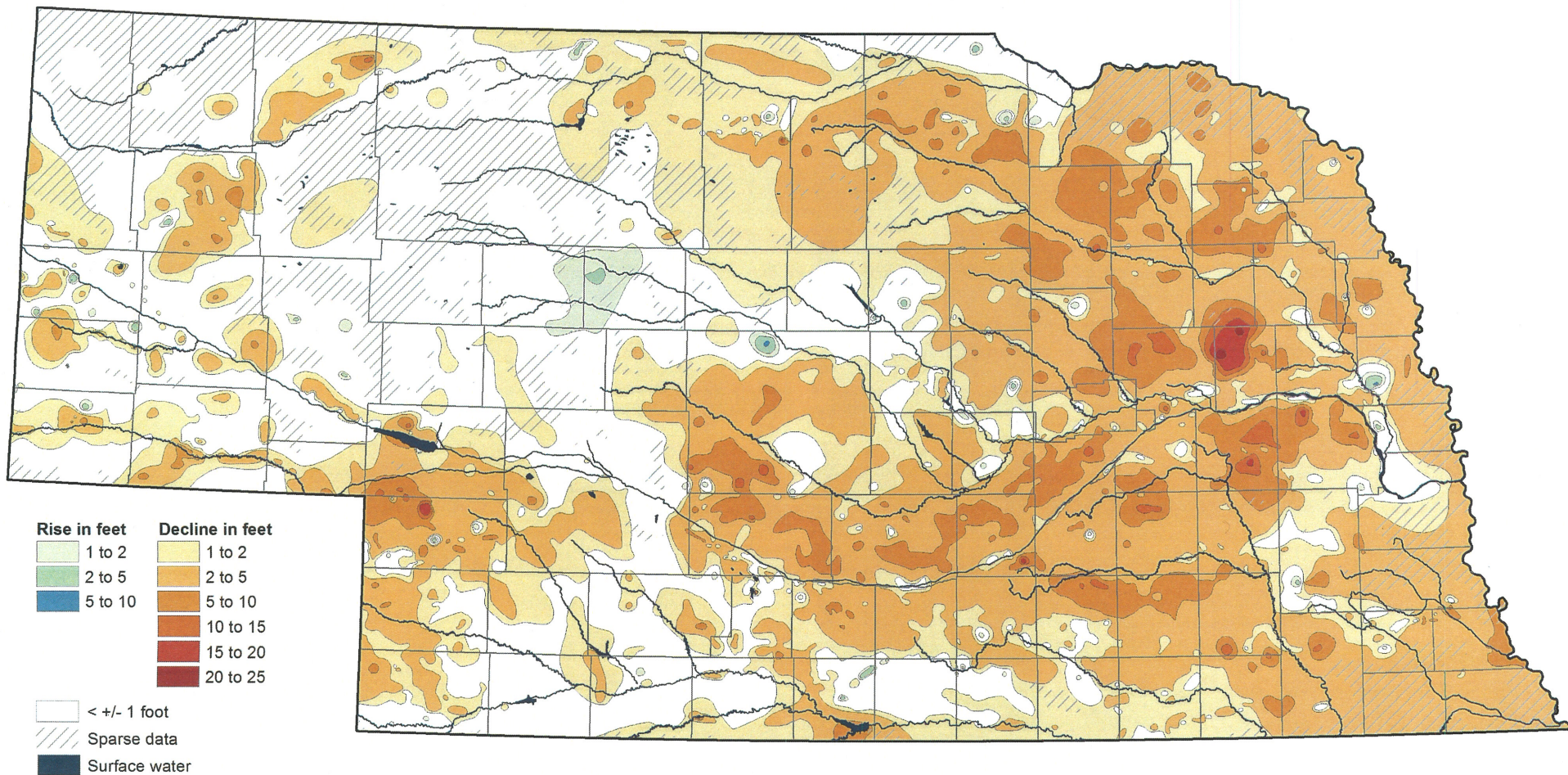
---

Young, A.; Burbach, M. E.; and Howard, L. M., "Groundwater-level Changes in Nebraska - Spring 2012 to Spring 2013" (2013).  
*Conservation and Survey Division*. 208.

<http://digitalcommons.unl.edu/conservationsurvey/208>

This Article is brought to you for free and open access by the Natural Resources, School of at DigitalCommons@University of Nebraska - Lincoln. It has been accepted for inclusion in Conservation and Survey Division by an authorized administrator of DigitalCommons@University of Nebraska - Lincoln.

# Groundwater-level Changes in Nebraska - Spring 2012 to Spring 2013



(1 foot = .3048 meters)

CONSERVATION AND SURVEY DIVISION (<http://snr.unl.edu/csd>)  
 School of Natural Resources (<http://snr.unl.edu>)  
 Institute of Agriculture and Natural Resources  
 University of Nebraska-Lincoln

Aaron Young, Water Resources Coordinator, CSD  
 Mark Burbach, Water Levels Program Supervisor, CSD  
 Les Howard, GIS Manager, CSD

U.S. Geological Survey  
 Nebraska Water Science Center

U.S. Bureau of Reclamation  
 Kansas-Nebraska Area Office

Nebraska Natural Resources Districts

Central Nebraska Public Power and Irrigation District

**IANR** School of Natural Resources  
 Institute of Agriculture and Natural Resources  
 University of Nebraska-Lincoln

The University of Nebraska-Lincoln does not discriminate based on gender, age, disability, race, color, religion, marital status, veteran's status, national or ethnic origin, or sexual orientation.

December 2013