

University of Nebraska - Lincoln

DigitalCommons@University of Nebraska - Lincoln

---

Papers in Veterinary and Biomedical Science

Veterinary and Biomedical Sciences,  
Department of

2003

## Mucosal Priming of Simian Immunodeficiency Virus-Specific Cytotoxic T-Lymphocyte Responses in Rhesus Macaques by the *Salmonella* Type III Secretion Antigen Delivery System

David T. Evans  
*Harvard Medical School*


Li-Mei Chen  
*Yale School of Medicine*

Jacqueline Gillis  
*Harvard Medical School*

Kuei-Chin Lin  
*Harvard Medical School*

Brian Harty  
*Harvard Medical School*

Follow this and additional works at: <https://digitalcommons.unl.edu/vetscipapers>

 Part of the [Biochemistry, Biophysics, and Structural Biology Commons](#), [Cell and Developmental Biology Commons](#), [Immunology and Infectious Disease Commons](#), [Medical Sciences Commons](#), [Veterinary Microbiology and Immunobiology Commons](#), and the [Veterinary Pathology and Pathobiology Commons](#)

---

Evans, David T.; Chen, Li-Mei; Gillis, Jacqueline; Lin, Kuei-Chin; Harty, Brian; Mazzara, Gail P.; Donis, Ruben O.; Mansfield, Keith G.; Lifson, Jeffrey D.; Desrosiers, Ronald C.; Galán, Jorge E.; and Johnson, R. Paul, "Mucosal Priming of Simian Immunodeficiency Virus-Specific Cytotoxic T-Lymphocyte Responses in Rhesus Macaques by the *Salmonella* Type III Secretion Antigen Delivery System" (2003). *Papers in Veterinary and Biomedical Science*. 234.

<https://digitalcommons.unl.edu/vetscipapers/234>

This Article is brought to you for free and open access by the Veterinary and Biomedical Sciences, Department of at DigitalCommons@University of Nebraska - Lincoln. It has been accepted for inclusion in Papers in Veterinary and Biomedical Science by an authorized administrator of DigitalCommons@University of Nebraska - Lincoln.

---

**Authors**

David T. Evans, Li-Mei Chen, Jacqueline Gillis, Kuei-Chin Lin, Brian Harty, Gail P. Mazzara, Ruben O. Donis, Keith G. Mansfield, Jeffrey D. Lifson, Ronald C. Desrosiers, Jorge E. Galán, and R. Paul Johnson

# Mucosal Priming of Simian Immunodeficiency Virus-Specific Cytotoxic T-Lymphocyte Responses in Rhesus Macaques by the *Salmonella* Type III Secretion Antigen Delivery System

David T. Evans,<sup>1</sup> Li-Mei Chen,<sup>2</sup> Jacqueline Gillis,<sup>1</sup> Kuei-Chin Lin,<sup>1</sup> Brian Harty,<sup>1</sup> Gail P. Mazzara,<sup>3</sup> Ruben O. Donis,<sup>4</sup> Keith G. Mansfield,<sup>1</sup> Jeffrey D. Lifson,<sup>5</sup> Ronald C. Desrosiers,<sup>1</sup> Jorge E. Galán,<sup>2</sup> and R. Paul Johnson<sup>1,6\*</sup>

New England Regional Primate Research Center, Harvard Medical School, Southborough, Massachusetts 01772-9102<sup>1</sup>; Section of Microbial Pathogenesis, Boyer Center for Molecular Medicine, Yale School of Medicine, New Haven, Connecticut 06536<sup>2</sup>; Therion Biologics Corporation, Cambridge, Massachusetts 02142<sup>3</sup>; Department of Veterinary and Biomedical Sciences, University of Nebraska-Lincoln, Lincoln, Nebraska 68583-0905<sup>4</sup>; Retroviral Pathogenesis Laboratory, AIDS Vaccine Program, SAIC Frederick, National Cancer Institute at Frederick, Frederick, Maryland 21702<sup>5</sup>; and Infectious Disease Unit and Partners AIDS Research Center, Massachusetts General Hospital, Charlestown, Massachusetts 02115<sup>6</sup>

Received 29 July 2002/Accepted 18 November 2002

Nearly all human immunodeficiency virus (HIV) infections are acquired mucosally, and the gut-associated lymphoid tissues are important sites for early virus replication. Thus, vaccine strategies designed to prime virus-specific cytotoxic T lymphocyte (CTL) responses that home to mucosal compartments may be particularly effective at preventing or containing HIV infection. The *Salmonella* type III secretion system has been shown to be an effective approach for stimulating mucosal CTL responses in mice. We therefore tested  $\Delta$ *phoP-phoQ* attenuated strains of *Salmonella enterica* serovar Typhimurium and *S. enterica* serovar Typhi expressing fragments of the simian immunodeficiency virus (SIV) Gag protein fused to the type III-secreted SopE protein for the ability to prime virus-specific CTL responses in rhesus macaques. Mamu-A\*01<sup>+</sup> macaques were inoculated with three oral doses of recombinant *Salmonella*, followed by a peripheral boost with modified vaccinia virus Ankara expressing SIV Gag (MVA Gag). Transient low-level CTL responses to the Mamu-A\*01 Gag<sub>181-189</sub> epitope were detected following each dose of *Salmonella*. After boosting with MVA Gag, strong Gag-specific CTL responses were consistently detected, and tetramer staining revealed the expansion of Gag<sub>181-189</sub>-specific CD8<sup>+</sup> T-cell responses in peripheral blood. A significant percentage of the Gag<sub>181-189</sub>-specific T-cell population in each animal also expressed the intestinal homing receptor  $\alpha$ 4 $\beta$ 7. Additionally, Gag<sub>181-189</sub>-specific CD8<sup>+</sup> T cells were detected in lymphocytes isolated from the colon. Yet, despite these responses, *Salmonella*-primed/MVA-boosted animals did not exhibit improved control of virus replication following a rectal challenge with SIVmac239. Nevertheless, this study demonstrates the potential of mucosal priming by the *Salmonella* type III secretion system to direct SIV-specific cellular immune responses to the gastrointestinal mucosa in a primate model.

Sexual transmission across mucosal barriers is by far the most common mode of human immunodeficiency virus (HIV) infection. Furthermore, the gut-associated lymphoid tissues are a major source of virus replication during the first few weeks of infection (39). These observations suggest that vaccine strategies designed to maximize virus-specific immune responses at mucosal barriers and in mucosal lymphoid tissues may be particularly effective at preventing or containing infections early, before diversification and dissemination of the virus population.

Peripheral vaccine strategies based on prime and boost regimens with recombinant DNA and/or virus vectors can elicit potent cellular immune responses to simian immunodeficiency virus (SIV) and HIV-1 antigens (3, 6, 11, 28, 31, 35). These approaches also afford limited protection, as measured by reductions in peak and postacute viral loads following challenges

with pathogenic SIV strains or simian-human immunodeficiency virus (SHIV) chimeras (3, 6, 11, 28, 31, 35). Higher frequencies of virus-specific CD8<sup>+</sup> T lymphocytes and the stimulation of CD4<sup>+</sup> T helper cell responses were generally associated with better control of viral loads after challenge (3, 6, 31, 35). Thus, while both antibody and cellular immune responses may ultimately be required for optimal protection, these studies indicate that strong cellular immune responses induced by vaccination can serve to limit virus replication.

Since immunization by peripheral routes typically does not induce immune responses in mucosal compartments (7, 10, 12), the protection afforded by prime and boost regimens could potentially be improved by modifications that direct cellular immune responses to mucosal sites. In support of this idea, a direct comparison of intrarectal versus subcutaneous immunization with similar peptide formulations demonstrated better protection of mucosally immunized animals against an intrarectal SHIV challenge (8). In this study, protection, as measured by reduced postchallenge viral loads, correlated with the stimulation of both virus-specific cytotoxic T lymphocyte (CTL) and T helper cell responses (8).

\* Corresponding author. Mailing address: Division of Immunology, New England Regional Primate Research Center, Harvard Medical School, One Pine Hill Dr., Southborough, MA 01772-9102. Phone: (508) 624-8148. Fax: (508) 624-8172. E-mail: paul\_johnson@hms.harvard.edu.

Attenuated strains of *Salmonella* spp. have been developed as potential vectors for stimulating immune responses in the gastrointestinal mucosa (34). However, the confinement of *Salmonella* strains to the intracellular vesicular compartments of bacterially infected cells has limited their potential for stimulating major histocompatibility complex (MHC) class I-restricted CTL responses. Indeed, this may explain the inefficient stimulation of virus-specific CTL responses in earlier studies in which macaques were immunized with recombinant *Salmonella* strains engineered to express SIV antigens (13, 37). To circumvent this problem, we have used an approach that takes advantage of the bacterial type III secretion system to deliver vaccine antigens directly into the cytoplasm and into the MHC class I antigen-processing pathway of *Salmonella*-infected cells (33).

The *Salmonella* type III secretion system is a multicomponent system consisting of structural, regulatory, and secreted elements specialized for the delivery of bacterial proteins into eukaryotic host cells (14). Upon contact with mammalian cells, structural elements of the *Salmonella* type III secretion system assemble into needle-like molecular filaments that span the inner and outer bacterial membranes and traverse the plasma membrane of the mammalian cell. By fusing heterologous protein sequences to type III-secreted bacterial proteins, antigens may be efficiently targeted into the host cell cytoplasm for antigen processing and presentation in association with MHC class I molecules (33). Infection with *Salmonella* recombinants expressing immunodominant CTL epitopes of influenza virus and lymphocytic choriomeningitis virus as fusions with the bacterial SptP protein has been shown to sensitize cells for CTL recognition *in vitro* (33). CTL recognition was MHC class I restricted, TAP dependent, and dependent on bacterial translocation of the SptP fusions by the type III secretion pathway (33). Furthermore, immunization of mice with an attenuated *Salmonella* strain engineered to deliver a single immunodominant CTL epitope of lymphocytic choriomeningitis virus stimulated potent virus-specific CTL responses that protected against a lethal challenge with lymphocytic choriomeningitis virus (33).

Here we explore the potential of the *Salmonella* type III secretion system to stimulate SIV-specific CTL responses in the gastrointestinal mucosa of rhesus macaques. Our data show for the first time that the *Salmonella* type III secretion system can be used to deliver large polypeptide antigens rather than minimal CTL epitopes for MHC class I antigen processing and presentation. This study is also the first to demonstrate the ability of the *Salmonella* type III antigen delivery system to prime T-cell responses in a nonhuman primate model and provides an important proof of principle for the feasibility of mucosal prime/peripheral boost vaccine approaches to direct cellular immune responses to mucosal compartments.

#### MATERIALS AND METHODS

***Salmonella* type III secretion constructs.** A panel of constructs expressing fusions between the SIV Gag protein and the bacterial SopE protein were created for the delivery of Gag polypeptides into mammalian cells by the *Salmonella* type III secretion system. Sequences coding for amino acids 4 to 507, 4 to 439, 4 to 284, 146 to 213, and 267 to 507 of Gag were cloned downstream from the sequence encoding the promoter and the first 104 amino acids of SopE in the low-copy plasmid pWSK30 (30, 41). The *H-2<sup>b</sup>*-restricted influenza virus nucleoprotein epitope NP<sub>366-374</sub> was included between the SopE and Gag sequences to

enable the detection of antigen presentation in murine cells. *ΔphoP-phoQ* attenuated strains of *Salmonella enterica* serovar Typhimurium (χ8429) and *Salmonella enterica* serovar Typhi (χ8521) were transformed with each of these constructs to create SopE-Gag-expressing *Salmonella* recombinants (15).

**Generation of modified vaccinia virus Ankara SIVmac239 gag recombinant.** The parental vaccinia virus was a plaque-purified isolate of a replication-defective strain of vaccinia virus designated modified vaccinia virus Ankara (MVA) (25). Recombinant MVA virus vT338 contains the *gag* gene from SIVmac239 (30) inserted into the deletion III region of the MVA genome (26) under the control of the vaccinia virus 40K (H5R) promoter (17). The virus also contains the *Escherichia coli lacZ* gene under the control of the fowlpox C1 promoter (21) for use as a colorimetric screen for recombinant viruses. The genomic structure of the recombinant virus was determined by amplification by PCR. Expression of Gag p55 was demonstrated by Western blot assay with anti-p27 antibody (Advanced Biotechnologies, Inc.).

**Animals and housing.** Rhesus macaques (*Macaca mulatta*) were housed at the New England Regional Primate Research Center in a centralized animal biosafety level 3 containment facility in accordance with standards of the Association for Assessment and Accreditation of Laboratory Animal Care and the Harvard Medical School Animal Care and Use Committee. Research was conducted according to the principles described in the Guide for the Care and Use of Laboratory Animals (4) and was approved by the Harvard Medical School Animal Care and Use Committee. Animals positive for the MHC class I allele *Mamu-A\*01* were identified by sequence-specific PCR (22) and selected for this study. All animals were also tested and found to be free of simian retrovirus type D, SIV, simian T lymphotropic virus type 1, and herpes B virus prior to assignment. Additionally, animals were screened and found to be negative for *Salmonella*-specific antibodies in serum. Over the course of the study, animals were monitored closely and euthanized when they were moribund or it was deemed necessary by the veterinary staff.

***Salmonella* strains and MVA inoculations.** Two *Mamu-A\*01*<sup>+</sup> rhesus macaques were inoculated with three intragastric doses of an attenuated *Salmonella* strain expressing SopE-Gag and boosted peripherally with MVA Gag (vT338; Therion Biologics Corporation, Cambridge, Mass.). *Salmonella* cultures were grown at 37°C with gentle shaking from an overnight starter culture in modified Luria-Bertani (LB) medium containing 0.3 M NaCl and 100 μg of ampicillin per ml to late log phase (0.8 to 0.9 optical density units at 600 nm [OD<sub>600</sub>]). The bacteria were then pelleted and resuspended in 2 ml of phosphate-buffered saline. Bacterial suspensions were infused directly into the duodenum of anesthetized animals that had been treated with a solution of 0.5% sodium bicarbonate to prevent the loss of the inoculum due to exposure to stomach acids (36).

Each animal was given two doses of *S. enterica* serovar Typhimurium, consisting of a 1:1 mixture of bacteria expressing SopE-Gag<sub>146-213</sub> and SopE-Gag<sub>4-507</sub> ( $5 \times 10^{10}$  CFU) on weeks 0 and 10. On week 27, each animal received an additional dose of *S. enterica* serovar Typhi ( $5 \times 10^9$  CFU) expressing SopE-Gag<sub>146-213</sub> and SopE-Gag<sub>4-284</sub>. On week 40, the two *Salmonella* strain-primed animals and two additional *Mamu-A\*01*<sup>+</sup> control animals were boosted intradermally with  $5 \times 10^8$  PFU of MVA Gag suspended in 0.5 ml of phosphate-buffered saline as described previously (2, 19).

**Analysis of *Salmonella* shedding.** The duration of *Salmonella* shedding in the feces was monitored following each bacterial inoculation. Fecal samples were collected and resuspended in selenite broth (1 g per 10 ml). Serial log dilutions ( $10^{-1}$  to  $10^{-9}$ ) were spread on duplicate MacConkey agar plates (50 μl/plate) with and without ampicillin (100 μg/ml) and incubated overnight at 37°C. Plates with ampicillin selected for the plasmid-containing *Salmonella* strain, while plates without ampicillin were permissive for the growth of bacteria that had lost the SopE-Gag expression construct during growth *in vivo*. Selenite broth cultures were also incubated overnight at 37°C to enrich for *Salmonella* organisms present at low frequencies. Overnight selenite broth cultures were plated to MacConkey agar when *Salmonella* colonies were not observed at the lowest dilutions for the initial set of plates. Non-lactose-fermenting colonies were selected for biochemical confirmation as *Salmonella* strains with the RapiD 20E assay (BioMérieux, Lyon, France). The last dilution positive for *Salmonella* colonies was scored to obtain a semiquantitative estimate of the number of organisms present in the feces at each time point.

**CTL assays.** (i) **CTL recognition of *Salmonella*-infected cells.** *Mamu-A\*01*<sup>+</sup> B-lymphoblastoid cell lines (B-LCLs) were infected at a multiplicity of infection of 40 CFU/cell with recombinant *Salmonella* strain grown to 0.8 to 0.9 OD<sub>600</sub>. Cells ( $10^6$ ) were infected for 2 h in 200 μl of antibiotic-free R10 medium (RPMI 1640 with 10% fetal bovine serum) and labeled with 50 μCi of sodium [<sup>51</sup>Cr]chromate during the second hour of incubation. B-LCLs pulsed with the *Mamu-A\*01* Gag<sub>181-189</sub> peptide (CTPYDINQM) and an irrelevant Nef peptide, 3K (ARGETYGRL), were also labeled as positive and negative controls, respec-

tively,  $^{51}\text{Cr}$ -labeled B-LCL targets were then washed three times in R10 medium with gentamicin (100  $\mu\text{g}/\text{ml}$ ) to kill extracellular bacteria and to remove excess [ $^{51}\text{Cr}$ ]chromium.

CTL lines were derived from SIV-infected Mamu-A\*01<sup>+</sup> macaques by peptide stimulation as described previously (28) and plated with  $^{51}\text{Cr}$ -labeled B-LCLs at effector-to-target cell ratios of 40:1, 20:1, and 10:1. Unlabeled B-LCLs infected with wild-type vaccinia virus (NYCBH) were added at a 15:1 unlabeled-to-labeled target cell ratio to reduce nonspecific  $^{51}\text{Cr}$  release. After 4 h at 37°C, 30  $\mu\text{l}$  of supernatant was harvested from each well into the wells of a LumaPlate-96 (Packard), and emitted radioactivity was measured in a 1450 Microbeta Plus Liquid scintillation counter (Wallac, Turku, Finland). The percent specific  $^{51}\text{Cr}$  release was calculated by the standard formula percent lysis = [(cpm with effectors - spontaneous cpm)/(maximal cpm - spontaneous cpm)]  $\times$  100.

(ii) **Gag-specific CTL activity following immunization.** Freshly isolated peripheral blood mononuclear cells (PBMC) ( $5 \times 10^6/\text{ml}$ ) were stimulated directly with the Mamu-A\*01 Gag<sub>181-189</sub> peptide (1  $\mu\text{g}/\text{ml}$ ) or by coculture with peptide-pulsed,  $\gamma$ -irradiated (3,000 rad) autologous B-LCLs (10:1 PBMC to B-LCL ratio) in multiple wells of a 24-well plate. After 4 days, recombinant human interleukin-2 (generously provided by M. Gately, Hoffmann-La Roche, Nutley, N.J.) was added to 20 U/ml, and cultures were incubated for 1 week to expand the peptide-specific CTL population. CTL recognition of peptide-pulsed autologous B-LCLs was assessed after 10 to 14 days of culture at three different effector-to-target cell ratios in a 5-h chromium release assay as described above.

**Proliferation assays.** PBMC were stimulated in quadruplicate wells of a 24-well plate ( $10^5$  cells/well) with concanavalin A (5  $\mu\text{g}/\text{ml}$ ; Sigma, St. Louis, Mo.), p55 Gag (1  $\mu\text{g}/\text{ml}$ ; provided by Shabbir Ahmad, University of California, Davis), or aldrithiol-2-inactivated SIVmneE11S (E11S; 1  $\mu\text{g}$  of p27 CA equivalent per ml) (5). PBMC controls were also incubated in R10 medium alone or with mock-treated H9 supernatant because E11S was harvested from SIV-infected H9 cells. Five days after concanavalin A stimulation and 7 days after antigen stimulation, cultures were pulsed with [ $^3\text{H}$ ]thymidine (1  $\mu\text{Ci}$ ) for 6 h and then harvested with an automated cell harvester (Tomtec; Wallac). [ $^3\text{H}$ ]thymidine incorporation was determined with a Microbeta Plus liquid scintillation counter (Wallac). Antigen-specific proliferation, expressed as the stimulation index, was calculated by dividing the mean [ $^3\text{H}$ ]thymidine incorporation in antigen-stimulated wells by the mean incorporation in control wells.

**Lymphocyte isolation from colon biopsies.** Endoscope-guided biopsy samples were collected from multiple sites in the colon to monitor for the homing of SIV-specific CD8<sup>+</sup> T cells to the gastrointestinal mucosa with previously described techniques (40). Pooled biopsy specimens from 10 to 12 separate sites representing both the epithelium and the underlying lamina propria were incubated in 1 mM EDTA for 30 min, followed by one hour in 0.5 mg of type II collagenase (Sigma) per ml at 37°C with vigorous shaking. Tissues were then mechanically dispersed with a blunt-ended 18-gauge needle and filtered through a 70- $\mu\text{m}$  nylon cell strainer. Cell suspensions were then layered over 35% to 60% discontinuous Percoll gradients and centrifuged at  $1,000 \times g$  for 20 min at 4°C to separate the lymphocytes and epithelial cells. Enriched lymphocyte populations were collected from the interface between the Percoll layers, washed, and resuspended in fluorescence-activated cell sorting (FACS) buffer (phosphate-buffered saline with 2% fetal bovine serum).

**Flow cytometry.** Peripheral blood and colonic lymphocytes were analyzed by four-color flow cytometry for SIV-specific CD8<sup>+</sup> T cells. Whole blood (100  $\mu\text{l}$ ) or colonic lymphocytes ( $1 \times 10^6$  to  $2 \times 10^6$  cells) were stained for 25 min at 37°C with fluorescein isothiocyanate, peridinin chlorophyll protein, or phycoerythrin-conjugated monoclonal antibodies and allophycocyanin-conjugated tetramers. Cells were stained simultaneously with CD3-fluorescein isothiocyanate (Becton Dickinson, San Jose, Calif.), CD8-peridinin chlorophyll protein (Becton Dickinson), and  $\alpha 4\beta 7$ -phycoerythrin (generously provided by Millennium Pharmaceuticals, Cambridge, Mass.) monoclonal antibodies and either Mamu-A\*01 Gag<sub>181-189</sub> or Mamu-A\*01 Tat<sub>28-35</sub> tetramers (generously provided by John Altman, Emory University, Atlanta, Ga.). Whole blood samples were treated for 10 min after antibody staining with FACS lysing solution (Becton Dickinson) to remove erythrocytes. Cells were then washed once in FACS buffer and fixed in 2% paraformaldehyde-phosphate-buffered saline. Samples were analyzed on a FACSCalibur flow cytometer (Becton Dickinson), and data analysis was performed with FlowJo (Tree Star, San Carlos, Calif.).

**Intra-rectal challenge.** Macaques were challenged intra-rectally with a dose of 8.5 ng of p27 equivalents ( $10^{3.5}$  50% tissue culture infectious doses) of SIVmac239 (23). The anal area of anesthetized animals was gently cleansed with soap and water, and the pelvis was elevated to an approximately 45° angle. The inoculum was drawn into a 1-ml syringe fitted with a 2-in. (ca. 5-cm) gastric gavage tube lubricated with KY jelly. The tube was gently inserted into the rectum to prevent abrasion or tearing of the epithelium, and the inoculum was

gradually infused into the rectal cavity. After infusion, the pelvis was kept in an elevated position for approximately 10 min to prevent drainage of the inoculum.

**Viral loads and CD4 counts.** SIV loads in plasma were quantitated with a real-time reverse-transcriptase-PCR assay as previously described (24). CD4 counts were determined by flow cytometry as previously described (43).

## RESULTS

**CTL recognition of rhesus monkey cell lines infected with SopE-Gag recombinant *Salmonella* strains.** Attenuated  $\Delta\text{phoP-phoQ}$  strains of *S. enterica* serovar Typhimurium and *S. enterica* serovar Typhi were engineered to deliver SIV Gag polypeptides into the MHC class I antigen-processing pathway of mammalian cells via the bacterial type III secretion system. A panel of five type III-secretion constructs expressing fusions between the first 104 amino acids of the *Salmonella* SopE protein and different segments of the SIV Gag protein were created. Four of the constructs (SopE-Gag<sub>4-507</sub>, SopE-Gag<sub>4-439</sub>, SopE-Gag<sub>4-284</sub>, and SopE-Gag<sub>146-213</sub>) included the immunodominant Gag<sub>181-189</sub> CTL epitope bound by the rhesus macaque MHC class I molecule Mamu-A\*01 (1, 27), while a fifth construct (SopE-Gag<sub>267-507</sub>) did not include this epitope.

To identify the most promising bacterial strains and constructs for immunizing animals, rhesus B-cell lines were infected with  $\Delta\text{phoP-phoQ}$  attenuated strains of *S. enterica* serovar Typhimurium and *S. enterica* serovar Typhi expressing each of the SopE-Gag fusions and tested for recognition by CTL lines derived from SIV-infected, Mamu-A\*01<sup>+</sup> animals (Fig. 1A and B). Delivery of each of the SopE-Gag fusions spanning the Mamu-A\*01/Gag<sub>181-189</sub> epitope by *S. enterica* serovar Typhimurium efficiently sensitized target cells for CTL recognition (Fig. 1A). However, CTL recognition of *S. enterica* serovar Typhi-infected target cells was considerably less efficient. There was no detectable CTL recognition of SopE-Gag<sub>4-507</sub> and SopE-Gag<sub>4-439</sub> in *S. enterica* serovar Typhi-infected cells (Fig. 1B). Only SopE-Gag<sub>4-284</sub> and SopE-Gag<sub>146-213</sub> were recognized above background levels (Fig. 1B). These results indicate that, at least in vitro, the *S. enterica* serovar Typhimurium recombinants are better able to sensitize rhesus cells for CTL recognition than the *S. enterica* serovar Typhi recombinants. These observations are also consistent with assays performed in rodent cells suggesting that the larger SopE-Gag fusions may not be translocated into cells as efficiently as the shorter fusions (data not shown).

We also tested CTL lines derived from an SIV-infected Mamu-A\*01<sup>-</sup> animal for the ability to recognize additional, non-Mamu-A\*01-restricted Gag epitopes. CTL lines were derived from PBMC by stimulation with a recombinant vaccinia virus expressing the full-length SIV Gag protein (Vac Gag) and with peptides representing previously defined CTL epitopes in this animal (Gag<sub>196-204</sub> and Gag<sub>299-307</sub>). Each of the CTL lines was tested for recognition of autologous B-cell targets infected with *S. enterica* serovar Typhimurium expressing SopE-Gag<sub>4-507</sub>, SopE-Gag<sub>146-213</sub>, SopE-Gag<sub>267-507</sub>, and the SopE vector. While the Vac Gag-stimulated CTL line killed target cells infected with each of the SopE-Gag recombinants, recognition by the peptide-stimulated CTL lines was more specific. The Gag<sub>196-204</sub>-stimulated CTL line killed target cells infected with *S. enterica* serovar Typhimurium expressing SopE-Gag<sub>4-507</sub> and SopE-Gag<sub>146-213</sub> but not SopE-Gag<sub>267-507</sub> (Fig. 1C). Likewise, the Gag<sub>299-307</sub>-stimulated CTL line killed

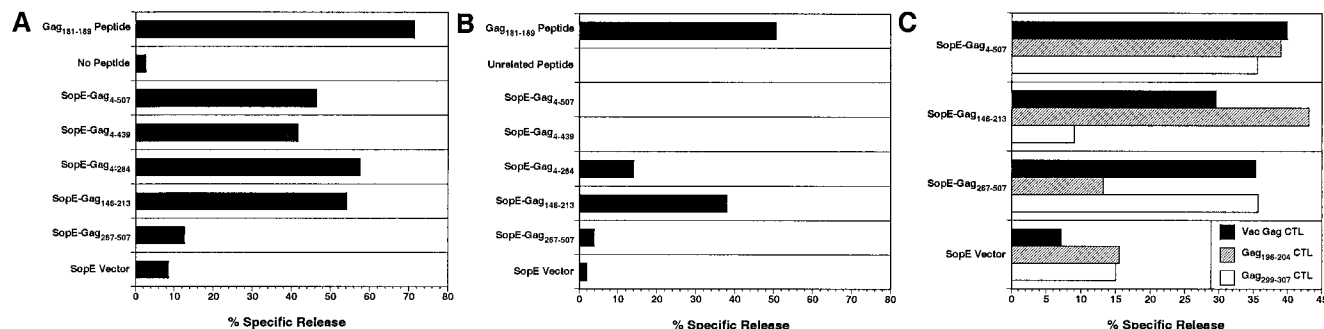


FIG. 1. CTL recognition of rhesus B-cell lines infected with attenuated strains of *Salmonella* expressing SopE-Gag fusion proteins. *Mamu-A\*01*<sup>+</sup> target cells were infected with  $\Delta$ *phoP-phoQ* attenuated *S. enterica* serovar Typhimurium (A) or *S. enterica* serovar Typhi (B) and tested for recognition by CTL lines derived from an SIV-infected, *Mamu-A\*01*<sup>+</sup> animal. Positive (Gag<sub>181-189</sub> peptide) and negative (no peptide or unrelated peptide [NeF<sub>23-31</sub>]) control targets were also included (A and B). CTL lines derived from an SIV-infected, *Mamu-A\*01*<sup>+</sup> animal by stimulation of PBMC with vaccinia virus Gag (Vac Gag) or previously defined Gag epitopes (Gag<sub>196-204</sub> and Gag<sub>299-307</sub>) were also tested for the ability to recognize target cells infected with SopE-Gag-recombinant, attenuated *S. enterica* serovar Typhimurium (C).

target cells infected with *S. enterica* serovar Typhimurium expressing SopE-Gag<sub>4-507</sub> and SopE-Gag<sub>267-507</sub> but not SopE-Gag<sub>146-213</sub> (Fig. 1C). These results demonstrate that the *Salmonella* type III secretion system is capable of delivering complex polypeptide antigens for MHC class I antigen processing and presentation of multiple epitopes. Thus, CTL responses elicited by immunization with SopE-Gag recombinant *Salmonella* need not be limited to the Mamu-A\*01/Gag<sub>181-189</sub> epitope.

**Inoculations with recombinant *Salmonella* strains and MVA.**

Based on CTL recognition in vitro, we selected *S. enterica* serovar Typhimurium as the bacterial platform for the initial priming doses. To maximize Mamu-A\*01/Gag<sub>181-189</sub>-specific CTL responses and to broaden T-cell responses to additional Gag epitopes, a combination of bacteria expressing SopE-Gag<sub>146-213</sub> and SopE-Gag<sub>4-507</sub> was used for immunization. Two *Mamu-A\*01*<sup>+</sup> macaques were inoculated with an equal mixture of  $\Delta$ *phoP-phoQ* attenuated *S. enterica* serovar Typhimurium expressing SopE-Gag<sub>146-213</sub> and SopE-Gag<sub>4-507</sub> for a total dose of  $5 \times 10^{10}$  CFU. An identical dose of SopE-Gag<sub>146-213</sub> and SopE-Gag<sub>4-507</sub> recombinant *S. enterica* serovar Typhimurium was administered 10 weeks later. Reasoning that we might minimize *Salmonella*-specific immunity and enhance Gag-specific responses by switching bacterial platforms,  $\Delta$ *phoP-phoQ* attenuated *S. enterica* serovar Typhi was used for a second boost on week 27. Since there was no detectable CTL recognition of SopE-Gag<sub>4-507</sub> in *S. enterica* serovar Typhi-infected cells (Fig. 1B), SopE-Gag<sub>4-284</sub> was used in place of SopE-Gag<sub>4-507</sub>. Each animal was inoculated with an equal mixture of bacteria expressing SopE-Gag<sub>146-213</sub> and SopE-Gag<sub>4-284</sub> for a total of  $5 \times 10^9$  CFU. At week 40, each of the *Salmonella*-primed animals and two additional *Mamu-A\*01*<sup>+</sup> control animals were boosted intradermally with an MVA recombinant expressing the full-length SIV Gag protein.

Following each dose of recombinant *Salmonella* cells, bacterial shedding was monitored in the feces to confirm gastrointestinal exposure and to approximate the duration of *Salmonella* infection. Fecal samples were collected periodically after inoculation, and serial dilutions were plated to MacConkey agar with and without ampicillin to assess the stability of the SopE-Gag expression plasmids in vivo. There was a marked

difference between the two animals in clinical signs and duration of shedding following the first *S. enterica* serovar Typhimurium inoculation (Table 1). Animal 478.99 showed no signs of clinical infection and resolved *Salmonella* infection within 1 week. However, animal 537.99 developed a severe case of diarrhea that resulted in significant weight loss and continued to shed *S. enterica* serovar Typhimurium for 4 weeks.

Following the *S. enterica* serovar Typhimurium and *S. enterica* serovar Typhi boosts at weeks 10 and 27, respectively, no adverse clinical signs were observed in either animal. Shedding after the week 10 boost ceased by 2 weeks postinoculation.

TABLE 1. *Salmonella* shedding in feces of macaques postinoculation

Day	Dilution of feces <sup>a</sup>					
	<i>S. enterica</i> serovar Typhimurium				<i>S. enterica</i> serovar Typhi	
	Wk 0		Wk 10		Wk 27	
	Animal 478.99	Animal 537.99	Animal 478.99	Animal 537.99	Animal 478.99	Animal 537.99
1	5	6	0	6	3	2
2	5	6	6	5	1	+
3	6	4	ND	ND	0	0
4	3	7	4	+	ND	ND
6	ND	ND	ND	ND	0	0
7	0	6	ND	ND	ND	ND
8	ND	ND	+	ND	0	0
9	ND	2	ND	+	1	0
10	ND	ND	1	0	0	0
11	0	2	ND	ND	ND	ND
14	0	+	0	0	ND	ND
16	ND	2	0	0	ND	ND
18	ND	+	ND	ND	ND	ND
21	ND	1	ND	ND	ND	ND
28	ND	+	ND	ND	ND	ND
35	ND	0	ND	ND	ND	ND
42	ND	0	ND	ND	ND	ND

<sup>a</sup> Fecal samples were collected on the indicated days postinoculation, and serial log dilutions were plated on MacConkey agar with ampicillin (100 μg/ml). Values represent the inverse of the exponent for the last dilution positive for *Salmonella* (e.g., 5 = 10<sup>-5</sup>). 0, no *Salmonella* was recovered. +, positive only after overnight enrichment in selenite broth. ND, no sample was collected.

Likewise, with the exception of a single sample from animal 478.99 on day 9, *S. enterica* serovar Typhi shedding was resolved within 1 week postinoculation in both animals (Table 1). No differences in the frequency of *Salmonella* recovery on plates with and without ampicillin were observed (data not shown). Western blot analysis of *Salmonella* colonies recovered from fecal cultures revealed the expression SopE-Gag<sub>146-213</sub> and SopE-Gag<sub>4-507</sub> at roughly equivalent frequencies after more than 3 weeks in animal 537.99 (data not shown). Thus, the plasmids encoding the SopE-Gag fusions were maintained well during bacterial replication in vivo in the absence of antibiotic selection.

*Salmonella*-specific antibody responses also confirmed infection with *S. enterica* serovar Typhimurium. Preimmune serum from each animal was negative for *Salmonella*-specific antibodies. However, *S. enterica* serovar Typhimurium lipopolysaccharide-specific antibody responses were detectable 1 week after the first inoculation in both animals and increased following the second inoculation at week 10 (data not shown). However, there was no increase in antibody responses after the *S. enterica* serovar Typhi boost at week 27, possibly due to the rather limited course of infection with this strain (data not shown and Table 1).

**SIV Gag-specific CD8<sup>+</sup> CTL responses.** Peptide-stimulated CTL cultures were derived from peripheral blood, and Gag-specific CTL responses were measured by <sup>51</sup>Cr release assays. CTL responses directed against the Gag<sub>181-189</sub> epitope ranging from 5% to 25% specific release above background were observed following each dose of recombinant *Salmonella* (Fig. 2A). Staining of these peptide-stimulated T cells with Mamu-A\*01/Gag<sub>181-189</sub> tetramers confirmed the expansion of a Gag-specific CD8<sup>+</sup> T-cell population at multiple time points in animal 478.99 (data not shown). After the MVA Gag boost, CTL activity was consistently observed in both of the *Salmonella*-primed animals and in control animals immunized with MVA Gag alone. Although CTL responses were somewhat higher at three of five time points in the *Salmonella*-primed animals compared to the animals that received only MVA Gag, these results did not clearly differentiate between primary and secondary responses in these two groups of animals (Fig. 2A). However, this was not surprising because <sup>51</sup>Cr release assays are not a particularly quantitative method for measuring CTL responses in vivo.

Peripheral blood lymphocytes were also stained directly with Mamu-A\*01/Gag<sub>181-189</sub> tetramers as a more quantitative method for following the development of Gag-specific CD8<sup>+</sup> T-cell responses. During the *Salmonella*-priming phase, the frequency of Gag-specific CD8<sup>+</sup> T cells was below the threshold of detection in both animals 478.99 and 537.99. However, after boosting with MVA Gag, tetramer-positive CD8<sup>+</sup> T-cell populations were detectable in all four animals (Fig. 2B). Furthermore, there was a clear difference in the kinetics and magnitude of these responses between the *Salmonella*-primed animals and the animals that received only MVA Gag. Both of the macaques that were inoculated with recombinant *Salmonella*, 478.99 and 537.99, were tetramer positive (>0.1% of the CD8<sup>+</sup> T-cell population) at week 41, 1 week after the MVA Gag boost. In contrast, tetramer-positive T-cell responses were undetectable until weeks 42 and 43 in animals 334.95 and 256.90, respectively, that had received only MVA Gag (Fig.

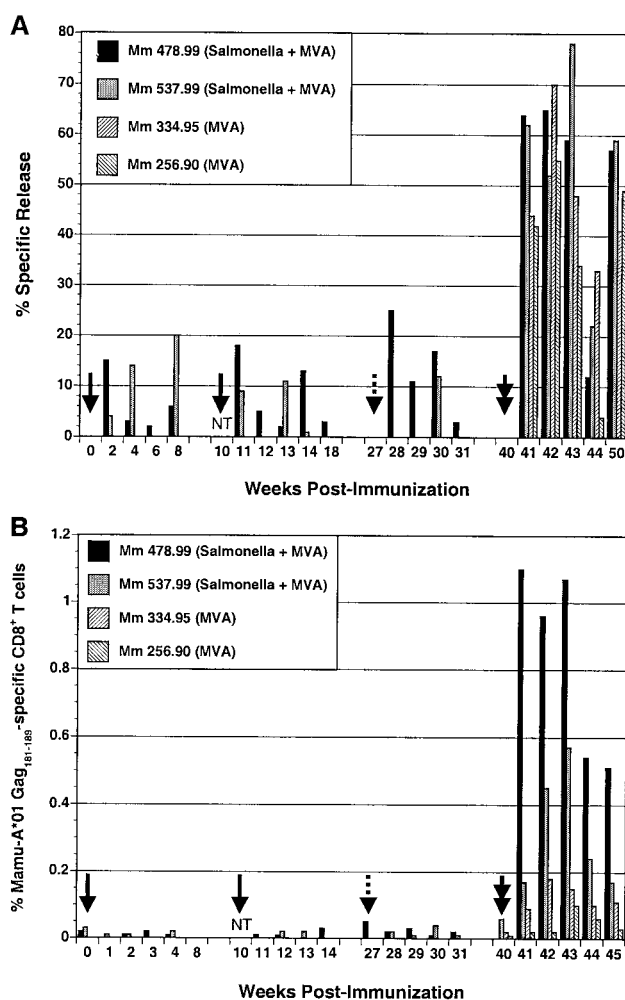


FIG. 2. SIV Gag-specific CD8<sup>+</sup> T-cell responses following immunization with recombinant *Salmonella* and modified vaccinia virus Ankara (MVA) expressing SIV Gag. Gag-specific CD8<sup>+</sup> T-cell responses were followed by <sup>51</sup>Cr release assays (A) and tetramer staining (B). The solid arrows indicate inoculations with *S. enterica* serovar Typhimurium given at weeks 0 and 10, the dashed arrow indicates the *S. enterica* serovar Typhi inoculation at week 27, and the double arrow indicates the MVA Gag boost at week 40. NT indicates that samples were not tested at week 10. (A) CTL cultures were derived from PBMC by peptide stimulation and tested for CTL recognition of autologous B-cell lines pulsed with Gag<sub>181-189</sub> in <sup>51</sup>Cr release assays. Bars indicate the difference in percent specific release for target cells pulsed with Gag<sub>181-189</sub> and targets pulsed with an unrelated Nef peptide at the highest effector-to-target cell ratio tested for each time point (20:1 to 40:1). Differences of greater than 10% specific release are considered positive. (B) PBMC were stained with monoclonal antibodies to CD3 and CD8 and with Mamu-A\*01/Gag<sub>181-189</sub> tetramers and analyzed by flow cytometry. After gating on the CD3<sup>+</sup> CD8<sup>+</sup> population, the percentage of tetramer-positive cells was determined at each time point. Values greater than 0.1% are considered significant.

2B). The frequency of Gag-specific CD8<sup>+</sup> T cells was also considerably higher in the *Salmonella*-primed animals than in the MVA Gag controls. While frequencies varied from one time point to the next, at week 43, when all four animals had detectable Gag-specific CD8<sup>+</sup> T-cell responses, the percentage of tetramer-positive cells was 4- to 10-fold higher in the *Salmonella*-primed animals than in the animals immunized with

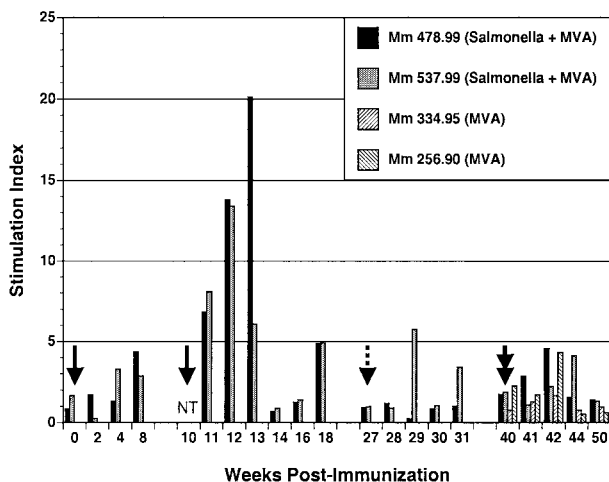


FIG. 3. Gag-specific proliferative responses following immunization with a recombinant *Salmonella* and MVA. PBMC were stimulated with aldrithiol-2-inactivated SIV or a 1,000-fold concentrate of aldrithiol-2-treated microvesicles prepared from uninfected cells. After 7 days, antigen-specific proliferation was determined in a 6-h [<sup>3</sup>H]thymidine incorporation assay. Stimulation indexes represent [<sup>3</sup>H]thymidine incorporation in response to SIV divided by incorporation in response to the microvesicle controls. Stimulation index values greater than 3 are considered positive. Solid arrows indicate the doses of *S. enterica* serovar Typhimurium given at weeks 0 and 10, the dashed arrow indicates the dose of *S. enterica* serovar Typhi given at week 27, and the double arrow indicates the MVA Gag inoculation at week 40. NT indicates that SIV-specific proliferation was not tested.

MVA Gag alone. Thus, these observations are consistent with the expansion of secondary CD8<sup>+</sup> T-cell responses to Gag in the *Salmonella*-primed animals.

**SIV-specific proliferative responses.** Proliferative responses to exogenous SIV antigens were monitored as an indicator of the development of Gag-specific CD4<sup>+</sup> T-cell responses. Fresh PBMC were stimulated with aldrithiol-inactivated preparations of SIV (5), and antigen-specific proliferation was assessed by [<sup>3</sup>H]thymidine incorporation. Stimulation indexes were calculated by dividing the [<sup>3</sup>H]thymidine incorporation in response to antigen by the basal level of incorporation for PBMC treated with control medium, and stimulation index values greater than 3 were considered positive (Fig. 3).

SIV-specific proliferative responses were low in both animals after the initial priming dose of *S. enterica* serovar Typhimurium. However, after the second *S. enterica* serovar Typhimurium dose at week 10, robust proliferative responses were observed in both animals for 3 weeks after inoculation (Fig. 3). Stimulation indexes ranged between 5 and 20, which are comparable to T-cell proliferative responses observed in animals chronically infected with live, attenuated strains of SIV (16). Thus, these results clearly demonstrate the stimulation of virus-specific CD4<sup>+</sup> T-cell responses by SopE-Gag-recombinant *S. enterica* serovar Typhimurium. However, with the exception of two time points for animal 537.99, proliferative responses after the *S. enterica* serovar Typhi boost at week 27 were undetectable (Fig. 3). While the reasons for this are unclear, the decision to use SopE-Gag<sub>4-284</sub> rather than SopE-Gag<sub>4-507</sub> and to lower the immunizing dose of the *Salmonella* strain 10-fold may have resulted in less efficient stimulation of Gag-

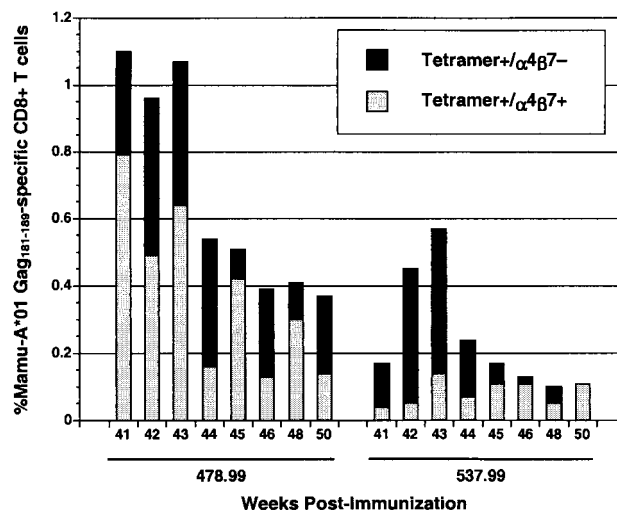


FIG. 4. Gag-specific CD8<sup>+</sup> T cells in the peripheral blood of the *Salmonella*-primed animals express the mucosal homing receptor  $\alpha 4\beta 7$ . PBMC were stained with monoclonal antibodies to CD3, CD8, and  $\alpha 4\beta 7$  and with Mamu-A\*01 Gag<sub>181-189</sub> tetramers and analyzed by flow cytometry. The percentage of total Gag<sub>181-189</sub>-specific CD8<sup>+</sup> T cells at each time point is indicated by the black bars, and the fraction of this population that was also  $\alpha 4\beta 7^+$  is indicated by the overlapping gray bars.

specific CD4<sup>+</sup> T-cell responses in animals 478.99 and 537.99. Likewise, proliferative responses after the week 40 MVA Gag boost were also low compared to responses following the second dose of *S. enterica* serovar Typhimurium in these two animals (Fig. 3). Since MVA Gag potentially stimulated CD8<sup>+</sup> T-cell responses, the less efficient boosting of CD4<sup>+</sup> T-cell responses may reflect a more effective stimulation of CD8<sup>+</sup> T-cell responses than CD4<sup>+</sup> T-cell responses.

**Gag-specific CD8<sup>+</sup> T cells induced following *Salmonella*/MVA vaccination express the mucosal homing receptor  $\alpha 4\beta 7$ .** As a marker for mucosal homing, peripheral blood lymphocytes were stained with antibodies to  $\alpha 4\beta 7$ .  $\alpha 4\beta 7$  is an integrin expressed on lymphocytes specific for gastrointestinal pathogens and binds to the mucosal addressin cell adhesion molecule (MadCAM1) expressed on high endothelial venules serving the gastrointestinal mucosa (9, 32, 38). Interactions between  $\alpha 4\beta 7$  and MadCAM1 participate in the migration of lymphocytes out of the circulatory system and into mucosal tissues (18, 42). Thus,  $\alpha 4\beta 7$  represents a convenient surface marker for lymphocytes homing to gastrointestinal compartments.

Following the MVA Gag boost, a significant percentage of the Mamu-A\*01/Gag<sub>181-189</sub> tetramer-positive population for each of the *Salmonella*-primed animals expressed  $\alpha 4\beta 7$ . While the  $\alpha 4\beta 7^+$  tetramer-positive population was more prominent in animal 478.99, the animal that made the strongest Gag-specific CD8<sup>+</sup> T-cell response, this population was also observed in animal 537.99 at multiple time points (Fig. 4). In most cases, more than 50% of the tetramer-positive CD8<sup>+</sup> T-cell population expressed  $\alpha 4\beta 7$ . The tetramer-positive CD8<sup>+</sup> T-cell responses in the two animals that received a single peripheral immunization with MVA Gag were too low to afford a meaningful comparison. However, Gag-specific



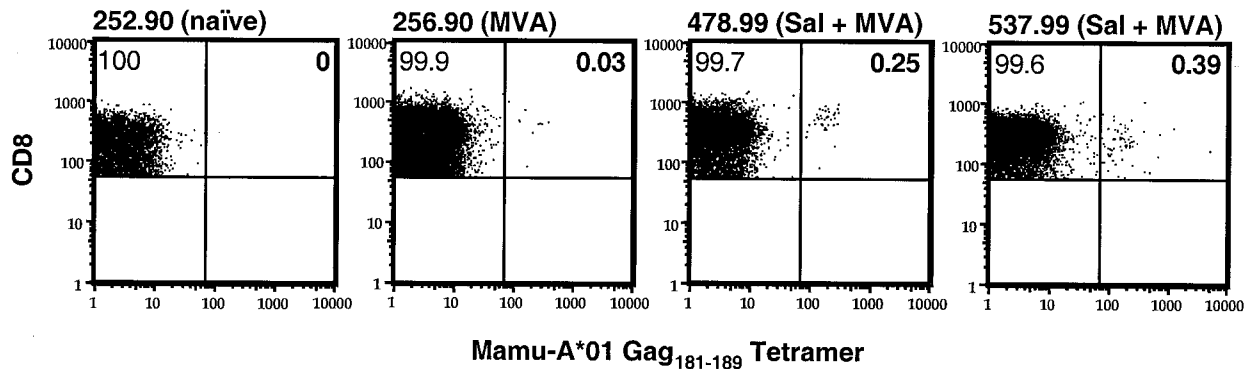


FIG. 5. Homing of Gag-specific CD8<sup>+</sup> T cells to the colon in *Salmonella* strain (Sal)-primed macaques. Freshly isolated lymphocytes from endoscope-guided pinch biopsies of the colon were stained with antibodies to CD3 and CD8 in addition to Mamu-A\*01 Gag<sub>181-189</sub> tetramers and analyzed by flow cytometry. After gating on the CD3<sup>+</sup> CD8<sup>+</sup> T-cell population, the percentage of CD8<sup>+</sup> T cells specific for Mamu-A\*01/Gag<sub>181-189</sub> was determined, as indicated in the upper right quadrants of each plot. More than 100,000 events and at least 6,000 CD3<sup>+</sup> CD8<sup>+</sup> T cells were collected for each sample.

CD8<sup>+</sup> T-cell responses stimulated by peripheral DNA prime/MVA boost regimens were previously shown to be  $\alpha 4\beta 7$  negative (10). Thus, these results further suggest that Gag-specific CD8<sup>+</sup> T-cell responses were primed in the gastrointestinal mucosa by the SopE-Gag-recombinant *Salmonella* strain.

**Gag-specific CD8<sup>+</sup> T cells induced by *Salmonella* strain/MVA vaccination home to the colonic mucosa.** SIV Gag-specific CD8<sup>+</sup> T cells were also observed among lymphocytes isolated from the colon of *Salmonella* strain-primed animals. Lymphocytes were isolated from endoscope-guided pinch biopsies of the colon 4 weeks after the MVA Gag boost (week 44) and stained with Mamu-A\*01/Gag<sub>181-189</sub> tetramers. A clear elevation in the Gag-specific CD8<sup>+</sup> T-cell population was observed in both *Salmonella*-primed animals (animals 478.99 and 537.99) compared to naïve (animal 252.90) and MVA Gag-immunized (animal 256.90) Mamu-A\*01<sup>+</sup> control animals (Fig. 5). Thus, gastrointestinal priming with the SopE-Gag-secreting recombinant *Salmonella* followed by boosting intradermally with MVA Gag induced Gag-specific CD8<sup>+</sup> T-cell responses that trafficked to the colonic mucosa.

**Intrarectal challenge with SIVmac239.** Each of the four immunized animals and two additional Mamu-A\*01<sup>+</sup>, naïve control animals were challenged intrarectally with SIVmac239 at week 50. Both of the *Salmonella*-primed animals became infected, and neither exhibited significant differences in peak or postacute viral loads compared to naïve control animals (Fig. 6A). Furthermore, both of the *Salmonella* strain-primed animals exhibited declining CD4<sup>+</sup> T-cell counts, similar to naïve and MVA Gag control animals (Fig. 6B). Thus, we did not observe any evidence of protection in this pilot study. Surprisingly, one of the animals immunized with MVA Gag alone (animal 256.90) did not become infected and remained resistant to infection with a threefold-higher dose of SIVmac239 administered intrarectally at week 58 (Fig. 6A).

We continued to follow the development of SIV-specific CD8<sup>+</sup> T-cell responses in the blood after challenging by staining with Mamu-A\*01/Gag<sub>181-189</sub> and Mamu-A\*01/Tat<sub>28-35</sub> tetramers. With the exception of animal 256.90, each of the immunized animals made dramatic secondary CD8<sup>+</sup> T-cell responses to Gag. These responses peaked 2 weeks after in-

fection at between 15% and 30% of the CD8<sup>+</sup> T-cell population (Fig. 7) and declined with resolution of primary viremia (Fig. 6A). In contrast, primary CD8<sup>+</sup> T-cell responses to SIV emerged a week later and were much lower in frequency. The Gag-specific responses in the naïve control animals and the Tat-specific responses in each of the immunized animals peaked between 3 and 4 weeks after infection at less than 5% of the peripheral blood CD8<sup>+</sup> T-cell population (Fig. 7).

## DISCUSSION

Despite recent advances in the development of vaccine approaches able to induce CTL responses, there is a continuing need to develop better methods to induce CTL responses able to home to mucosal sites. We therefore evaluated the potential of the *Salmonella* type III secretion system to prime SIV-specific T-cell responses in the gastrointestinal mucosa of rhesus macaques. The ability of the *Salmonella* type III secretion system to deliver SIV Gag polypeptides into rhesus cells for antigen processing and presentation to CTL was first demonstrated in vitro. Infection of rhesus B-cell lines with *S. enterica* serovar Typhimurium and *S. enterica* serovar Typhi expressing SopE-Gag fusions sensitized cells for recognition by Gag-specific CTL derived from SIV-infected animals. These results demonstrated that the *Salmonella* type III secretion system was capable of delivering polypeptide antigens, not just discrete CTL epitopes, into the MHC class I antigen-processing pathway of macaque cells.

Recombinants expressing SopE fusions with shorter Gag polypeptides were generally recognized better than recombinants expressing fusions with longer Gag sequences, suggesting that the larger fusion proteins may not be efficiently translocated into host cells. This was particularly evident in CTL assays with *S. enterica* serovar Typhi-infected target cells. Indeed, there was no detectable CTL recognition of the two largest fusions, SopE-Gag<sub>4-507</sub> and SopE-Gag<sub>4-439</sub>, when they were expressed by *S. enterica* serovar Typhi. Similar differences in CTL recognition of the SopE-Gag fusion proteins were observed in preliminary assays with *S. enterica* serovar Typhimurium recombinants in rodent cells. These experiments re-

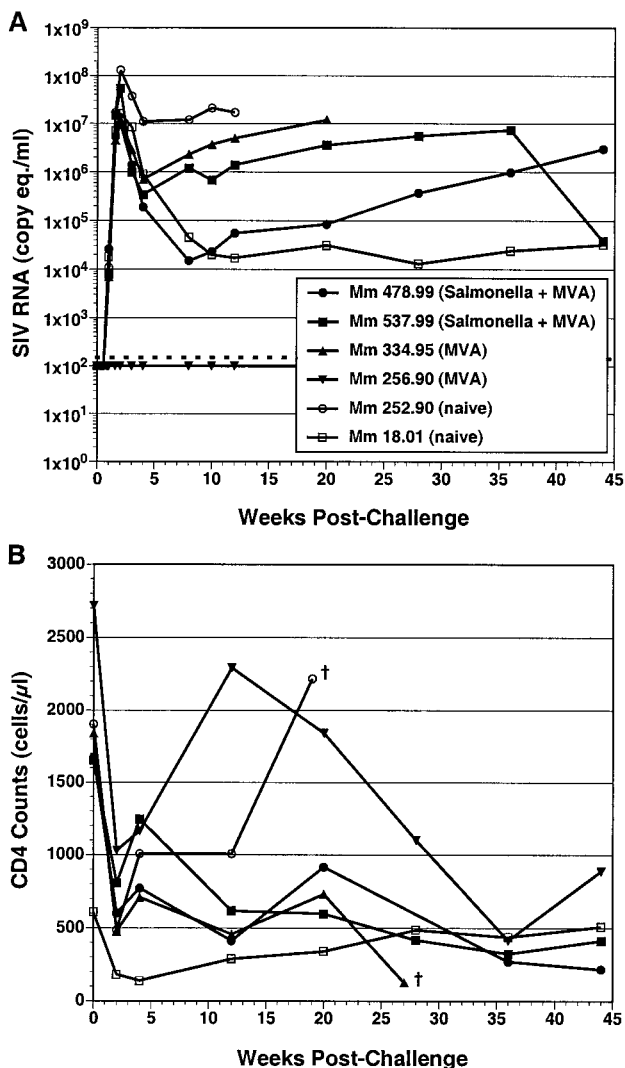


FIG. 6. SIV RNA in plasma and CD4<sup>+</sup> T-cell counts after intrarectal challenge with SIVmac239. (A) Plasma viral RNA loads were determined with a quantitative reverse transcription-PCR assay (24). This assay has a nominal sensitivity of 100 copy equivalents/ml of plasma (indicated by the dashed line) and an interassay coefficient of variation of <25%. (B) CD4<sup>+</sup> T-cell counts were determined by flow cytometry as described previously (43). Time points marked with † indicate the week that an animal was euthanized.

vealed a trend toward better T-cell recognition of the shorter SopE-Gag fusion proteins and are consistent with Western blots showing that the larger SopE-Gag fusion proteins were not secreted by the *Salmonella* type III secretion system as efficiently as the smaller fusion proteins (data not shown). At present, it is unclear whether these differences in the efficiency of secretion and antigen presentation reflect differences in the size of the polypeptide fusions or sequence-specific properties unique to certain regions of the SIV Gag protein.

Intragastric inoculation of rhesus macaques with attenuated *Salmonella* strains expressing selected SopE-Gag fusions also primed Gag-specific CTL responses in vivo. While CTL responses to Gag were initially low during the *Salmonella*-priming phase, these responses increased dramatically following the

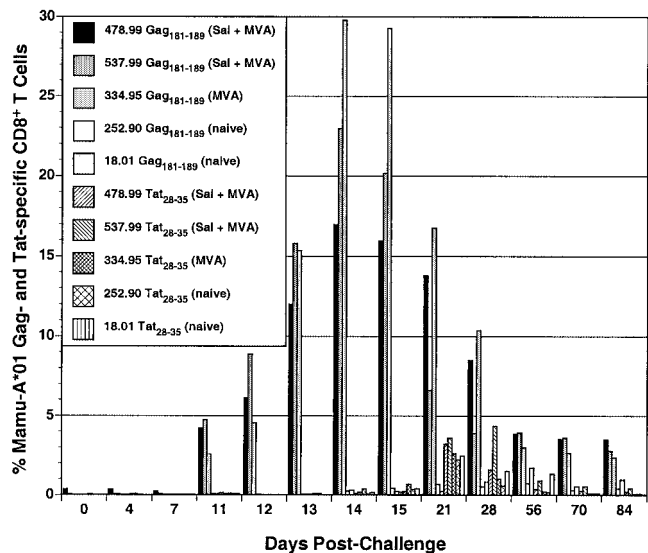


FIG. 7. Postchallenge SIV Gag- and Tat-specific CD8<sup>+</sup> T-cell responses. PBMC were stained with monoclonal antibodies to CD3 and CD8 and with Mamu-A\*01/Gag<sub>181-189</sub> or Mamu-A\*01/Tat<sub>28-35</sub> tetramers and analyzed by flow cytometry. After gating on the CD3<sup>+</sup> CD8<sup>+</sup> population, the percentage of cells specific for Gag<sub>181-189</sub> and Tat<sub>28-35</sub> was determined at each time point.

MVA Gag boost. Gag-specific CD8<sup>+</sup> T-cell frequencies in the two *Salmonella*-primed/MVA-boosted animals were similar to Gag-specific CD8<sup>+</sup> T-cell frequencies stimulated by early DNA prime/MVA boost regimens (2, 19). Furthermore, these responses were higher in the *Salmonella*-primed animals than in the animals that received MVA Gag alone. The higher frequency of Gag-specific CD8<sup>+</sup> T cells in the two *Salmonella*-primed animals is characteristic of a secondary immune response and is consistent with the priming of these responses by SopE-Gag-expressing *Salmonella* strains.

Following the MVA Gag boost, a fraction of the Gag-specific CD8<sup>+</sup> T-cell population in the peripheral blood of each of the *Salmonella*-primed animals also expressed the mucosal homing receptor  $\alpha 4\beta 7$ . The  $\alpha 4\beta 7^+$  population was variable but generally represented 30% to 80% of the total tetramer-positive population.  $\alpha 4\beta 7$  is expressed on lymphocytes specific for gastrointestinal pathogens, and interactions between  $\alpha 4\beta 7$  and MadCAM1 on the endothelium of blood vessels serving the gastrointestinal tract facilitate the trafficking of lymphocytes into effector sites of the gut-associated lymphoid tissues (9, 18, 32, 42).  $\alpha 4\beta 7^+$  CD8<sup>+</sup> T-cell responses to SIV have been observed in macaques infected with wild-type and live attenuated strains of the virus (10). This  $\alpha 4\beta 7^+$  phenotype probably reflects the preferential replication of SIV in activated CD4<sup>+</sup> T cells of the intestine (39, 40). In contrast, SIV-specific CD8<sup>+</sup> T responses stimulated by a peripheral DNA prime/MVA boost vaccine regimen were shown to be  $\alpha 4\beta 7$  negative (10). The expression of  $\alpha 4\beta 7$  on Gag-specific CD8<sup>+</sup> T cells of *Salmonella*-primed/MVA-boosted animals further supports the gastrointestinal priming of these responses by recombinant *Salmonella* strains. To our knowledge, this represents the first demonstration of SIV-specific,  $\alpha 4\beta 7^+$  CD8<sup>+</sup> T-cell responses stimulated by a recombinant mucosal vaccine approach.

Consistent with the  $\alpha 4\beta 7^+$  phenotype of Gag-specific CD8<sup>+</sup> T cells in the blood, Gag-specific CD8<sup>+</sup> T cells were also found in lymphocytes isolated from endoscope-guided colon biopsies. Tetramer staining revealed a small but distinct Gag-specific CD8<sup>+</sup> T-cell population that was present in colonic lymphocytes isolated from the *Salmonella*-primed animals but not from naïve or MVA Gag-immunized Mamu-A\*01<sup>+</sup> control animals. Thus, mucosal priming with recombinant *Salmonella* strains followed by an intradermal boost with MVA Gag stimulated CD8<sup>+</sup> T-cell responses that homed to mucosal surfaces of the gastrointestinal tract. This analysis did not discriminate between intraepithelial and lamina propria lymphocyte populations, both of which were represented in the biopsy samples. Nevertheless, the presence of Gag-specific CD8<sup>+</sup> T cells at such superficial sites is encouraging, since it indicates that the virus-specific T cells trafficked to mucosal tissues relevant to the earliest stages of viral transmission.

Despite having stimulated Gag-specific CD8<sup>+</sup> T-cell responses in both peripheral and mucosal compartments, animals immunized with SopE-Gag-recombinant *Salmonella* were not protected against an intrarectal challenge with SIVmac239. Each of the *Salmonella*-primed animals became infected and did not differ significantly in peak or postacute viral loads from control animals. The goal of this pilot study was to evaluate the potential of the *Salmonella* type III secretion system to prime SIV-specific mucosal CTL responses. Thus, the *Salmonella* and MVA recombinants were designed to express only Gag polypeptides and emphasized responses to a single CD8<sup>+</sup> T-cell epitope (Mamu-A\*01/Gag<sub>181-189</sub>) that could be detected easily with available MHC class I tetramers. However, these responses may not have been diverse enough to contain virus replication.

Although animals were immunized with a *Salmonella* strain expressing both SopE-Gag<sub>146-213</sub> and SopE-Gag<sub>4-507</sub>, the SopE-Gag<sub>4-507</sub> fusion protein was secreted much less efficiently than SopE-Gag<sub>146-213</sub> in Western blot assays on bacterial culture supernatants (data not shown). Therefore, despite CTL recognition of SopE-Gag<sub>4-507</sub> in *S. enterica* serovar Typhimurium-infected cells in vitro (Fig. 1A), this construct may have contributed little to the priming of Gag-specific CD8<sup>+</sup> T-cell responses in vivo. Hence, mucosal priming of CD8<sup>+</sup> T-cell responses may have been limited to Gag residues 146 to 213 and to the Mamu-A\*01/Gag<sub>181-189</sub> epitope alone.

An additional explanation for the lack of protection in this study is the relative weakness of Gag-specific CD8<sup>+</sup> T-cell responses. While the responses in the *Salmonella* strain-primed/MVA-boosted animals were similar in frequency to responses achieved by early DNA prime/MVA boost regimens (2, 19), they were lower than responses stimulated by more recent, better-optimized regimens (3, 35). Finally, SIVmac239 represents a particularly rigorous challenge virus. Protective immunity to SIVmac239 has been extremely difficult to elicit even with multivalent vaccine approaches that stimulate stronger and much broader cellular immunity (20). Thus, it is not surprising that the narrowly focused and relatively weak cellular immune responses stimulated in this pilot study failed to contain virus replication after challenge with SIVmac239.

One of the animals vaccinated with MVA Gag alone (animal 256.90) did not become infected after intrarectal challenge with SIVmac239. Since this animal remained resistant to a

threefold-higher dose of virus administered 8 weeks later, it is unlikely that the failure to establish an infection in this animal simply reflects the odds of virus transmission across the rectal mucosa with a low-titer virus inoculum. While it is possible that immunization with MVA Gag may have contributed to the resistance of 256.90 to SIV infection, this is also unlikely to be the sole explanation for this result, since such solid protection against challenge with pathogenic SIVmac strains is rarely, if ever, observed in animals immunized with recombinant poxviruses. Resistance to mucosal SIV infection among control animals has been observed in other vaccine studies and often complicates the interpretation of protection data obtained from mucosal challenges (29). Thus, some animals may have an inherent resistance to mucosal infection that is poorly understood at present (29).

The results of this study suggest that mucosal priming with vectors such as attenuated *Salmonella* may direct virus-specific cellular immune responses to mucosal sites of virus transmission and early virus replication. However, the T-cell responses stimulated in this study were insufficient to protect against an intrarectal challenge with SIVmac239. Having demonstrated the potential of the *Salmonella* type III secretion system to prime SIV-specific CTL responses in macaques, future studies with additional *Salmonella* strains and MVA recombinants and more optimal vaccination protocols can now be designed to more rigorously evaluate the ability of this approach to provide protection against viral challenge.

#### ACKNOWLEDGMENTS

We thank Angela Carville for collecting the intestinal biopsies, Mandy Cromwell for her assistance in analyzing the flow cytometry data for the colon biopsies, and Michael Piatak, Jr., for assistance with the viral load measurements. We also thank John Altman for providing the MHC class I tetramers, Meryl Forman for providing the  $\alpha 4\beta 7$  antibody, Maurice Gately for providing the recombinant interleukin-2, and Roy Curtiss for providing the *ΔphoP-phoQ Salmonella* strains.

This work was supported by Public Health Service grants AI10464, RR00168, AI35365, AI46953, and AI45314 and funded in part with federal funds from the National Institutes of Health under contract no. NO1-CO-12400. R. Paul Johnson is an Elizabeth Glaser Scientist and is supported by the Elizabeth Glaser Pediatric AIDS Foundation.

#### REFERENCES

- Allen, T. M., J. Sidney, M. F. del Guercio, R. L. Glickman, G. L. Lensmeyer, D. A. Wiebe, R. DeMars, C. D. Pauza, R. P. Johnson, A. Sette, and D. I. Watkins. 1998. Characterization of the peptide binding motif of a rhesus MHC class I molecule (Mamu-A\*01) that binds an immunodominant CTL epitope from simian immunodeficiency virus. *J. Immunol.* **160**:6062-6071.
- Allen, T. M., T. U. Vogel, D. H. Fuller, B. R. Mothe, S. Steffen, J. E. Boyson, T. Shipley, J. Fuller, T. Hanke, A. Sette, J. D. Altman, B. Moss, A. J. McMichael, and D. I. Watkins. 2000. Induction of AIDS virus-specific CTL activity in fresh, unstimulated peripheral blood lymphocytes from rhesus macaques vaccinated with a DNA prime/modified vaccinia virus Ankara boost regimen. *J. Immunol.* **164**:4968-4978.
- Amara, R. R., R. Villinger, J. D. Altman, S. L. Lydy, S. P. O'Neil, S. I. Staprans, D. C. Montefiori, Y. Xu, J. G. Herndon, L. S. Wyatt, M. A. Candido, N. L. Kozyr, P. L. Earl, J. M. Smith, H.-L. Ma, B. D. Grimm, M. L. Hulsey, J. Miller, H. M. McClure, J. M. McNicholl, B. Moss, and H. L. Robinson. 2001. Control of a mucosal challenge and prevention of AIDS by a multiprotein DNA/MVA vaccine. *Science* **292**:69-74.
- Anonymous. 1996. The Institute of Laboratory Animal Resources, National Research Council: guide for the care and use of laboratory animals, 86-123. National Institutes of Health, Washington, D.C.
- Arthur, L. O., J. W. Bess, E. N. Chertova, J. L. Rossio, M. T. Esser, R. E. Benveniste, L. E. Henderson, and J. D. Lifson. 1998. Chemical inactivation of retroviral infectivity by targeting nucleocapsid protein zinc fingers: a candidate SIV vaccine. *AIDS Res. Hum. Retroviruses* **14**:S311-S319.
- Barouch, D. H., S. Santra, J. E. Schmitz, M. J. Kuroda, T.-M. Fu, W. Wagner, M. Bliska, A. Craiu, X. X. Zheng, G. R. Krivulka, K. Beaudry, M. A.

- Lifton, C. E. Nickerson, W. L. Trigona, K. Punt, D. C. Freed, L. Guan, S. Dubey, D. Casimiro, A. Simon, M.-E. Davies, M. Chastain, T. B. Strom, R. S. Gelman, D. C. Montefiori, M. G. Lewis, E. A. Emini, J. W. Shiver, and N. L. Letvin. 2000. Control of viremia and prevention of clinical AIDS in rhesus monkeys by cytokine-augmented DNA vaccination. *Science* **290**:486–492.
7. Belyakov, I. M., M. A. Derby, J. D. Ahlers, B. L. Kelsall, P. Earl, B. Moss, W. Strober, and J. A. Berzofsky. 1998. Mucosal immunization with HIV-1 peptide vaccine induces mucosal and systemic cytotoxic T lymphocytes and protective immunity in mice against intrarectal recombinant HIV-vaccinia challenge. *Proc. Natl. Acad. Sci. USA* **95**:1709–1714.
8. Belyakov, I. M., Z. Hel, B. Kelsall, V. A. Kuznetsov, J. D. Ahlers, J. Nacsa, D. I. Watkins, T. M. Allen, A. Sette, J. Altman, R. Woodward, P. D. Markham, J. D. Clements, G. Franchini, W. Strober, and J. A. Berzofsky. 2001. Mucosal AIDS vaccine reduces disease and viral load in gut reservoir and blood after mucosal infection of macaques. *Nat. Med.* **7**:1320–1326.
9. Berlin, C., E. L. Berg, M. J. Briskin, D. P. Andrew, P. J. Kilshaw, B. Holzmann, I. L. Weissman, A. Hamann, and E. C. Butcher. 1993.  $\alpha 4\beta 7$  integrin mediates lymphocyte binding to the mucosal vascular addressin MAdCAM-1. *Cell* **74**:185–195.
10. Cromwell, M. A., R. S. Veazey, J. D. Altman, K. G. Mansfield, R. Glickman, T. M. Allen, D. I. Watkins, A. A. Lackner, and R. P. Johnson. 2000. Induction of mucosal homing virus-specific CD8<sup>+</sup> T lymphocytes by attenuated simian immunodeficiency virus. *J. Virol.* **74**:8762–8766.
11. Davis, N. L., I. J. Caley, K. W. Brown, M. R. Betts, D. M. Irlbeck, K. M. McGrath, M. J. Connell, D. C. Montefiori, J. A. Frelinger, R. Swanstrom, P. R. Johnson, and R. E. Johnson. 2000. Vaccination of macaques against pathogenic simian immunodeficiency virus with Venezuelan equine encephalitis virus replicon particles. *J. Virol.* **74**:371–378.
12. Eo, S. K., M. Gierynska, A. A. Kamar, and B. T. Rouse. 2001. Prime-boost immunization with DNA vaccine: mucosal route of administration changes the rules. *J. Immunol.* **166**:5473–5479.
13. Franchini, G., M. Robert-Guroff, J. Tartaglia, A. Aggarwal, A. Abimiku, J. Benson, P. Markham, K. Limbach, G. Hurteau, J. Fullen, K. Aldrich, N. Miller, J. Sadoff, E. Paoletti, and R. C. Gallo. 1995. Highly attenuated HIV type 2 recombinant poxviruses, but not HIV-2 recombinant *Salmonella* vaccines, induce long-lasting protection in rhesus macaques. *AIDS. Res. Hum. Retroviruses* **11**:909–920.
14. Galán, J. E., and A. Collmer. 1999. Type III secretion machines: bacterial devices for protein delivery into host cells. *Science* **284**:1322–1328.
15. Galán, J. E., and R. Curtiss. 1989. Virulence and vaccine potential of *phoP* mutants of *Salmonella typhimurium*. *Microb. Pathog.* **6**:433–443.
16. Gauduin, M.-C., R. L. Glickman, S. Ahmad, R. Yilma, and R. P. Johnson. 1999. Immunization with live attenuated simian immunodeficiency virus induces strong type 1 T helper responses and  $\beta$ -chemokine production. *Proc. Natl. Acad. Sci. USA* **96**:14031–14036.
17. Gritz, L., A. Destree, N. Cormier, E. Day, V. Stallard, T. Caiazzo, G. Mazza, and D. Panicali. 1990. Generation of hybrid genes and proteins by vaccinia virus-mediated recombination: application to human immunodeficiency virus type 1 *env*. *J. Virol.* **64**:5948–5957.
18. Hamann, A., D. P. Andrew, D. Jablonski-Westrich, B. Holzmann, and E. C. Butcher. 1994. Role of  $\alpha 4$ -integrins in lymphocyte homing to mucosal tissues in vivo. *J. Immunol.* **152**:3282–3293.
19. Hanke, T., R. V. Samuel, T. J. Blanchard, V. C. Neumann, T. M. Allen, J. E. Boyson, S. A. Sharpe, N. Cook, G. L. Smith, D. I. Watkins, M. P. Cranage, and A. J. McMichael. 1999. Effective induction of simian immunodeficiency virus-specific cytotoxic T lymphocytes in macaques by with a multiepitope gene and DNA prime-modified vaccinia virus Ankara boost vaccination regimen. *J. Virol.* **73**:7524–7532.
20. Horton, H., T. U. Vogel, D. K. Carter, K. Vielhuber, D. H. Fuller, T. Shipley, J. T. Fuller, K. J. Kunzman, G. Sutter, D. C. Montefiori, V. Erfle, R. C. Desrosiers, N. Wilson, L. J. Picker, S. M. Wollinsky, C. Wang, D. B. Allison, and D. I. Watkins. 2002. Immunization of rhesus macaques with a DNA prime/modified vaccinia virus Ankara boost regimen induces broad simian immunodeficiency virus (SIV)-specific T-cell responses and reduces initial viral replication but does not prevent disease progression following challenge with pathogenic SIVmac239. *J. Virol.* **76**:7187–7202.
21. Jenkins, S., L. Gritz, C. H. Fedor, E. M. O'Neill, L. K. Cohen, and D. L. Panicali. 1991. Formation of lentivirus particles by mammalian cells infected with recombinant fowlpox virus. *AIDS Res. Hum. Retroviruses* **7**:991–998.
22. Knapp, L. A., E. Lehmann, M. S. Piekarczyk, J. A. Urvater, and D. I. Watkins. 1997. A high frequency of Mamu-A\*01 in the rhesus macaque detected by polymerase chain reaction with sequence-specific primers and direct sequencing. *Tissue Antigens* **50**:657–661.
23. Lewis, M. G., S. Bellah, K. McKinnon, J. Yalley-Ogunro, P. M. Zack, W. R. Elkins, R. C. Desrosiers, and G. E. Eddy. 1994. Titration and characterization of two rhesus derived SIVmac challenge stocks. *AIDS. Res. Hum. Retroviruses* **10**:213–220.
24. Lifson, J. D., J. L. Rossio, M. Piatak, T. Parks, L. Li, R. Kiser, V. Coalter, B. Fisher, B. M. Flynn, S. Czajak, V. M. Hirsch, K. A. Reimann, J. E. Schmitz, J. Ghayeb, N. Bischofberger, M. A. Nowak, R. C. Desrosiers, and D. Wodarz. 2001. Role of CD8<sup>+</sup> lymphocytes in control of simian immunodeficiency virus infection and resistance to rechallenge after transient early antiretroviral treatment. *J. Virol.* **75**:10187–10199.
25. Mayr, A., V. Hochstein-Mintzel, and H. Stickl. 1975. Abstammung, Eigenschaften und Verwendung des attenuierten vaccinia-Stammes MVA. *Infection* **3**:6–14.
26. Meyer, H., G. Sutter, and A. Mayr. 1991. Mapping of deletions in the genome of the highly attenuated vaccinia virus MVA and their influence on virulence. *J. Gen. Virol.* **72**:1031–1038.
27. Miller, M. D., H. Yamamoto, A. L. Hughes, D. I. Watkins, and N. L. Letvin. 1991. Definition of an epitope and MHC class I molecule recognized by gag-specific cytotoxic T lymphocytes in SIVmac-infected rhesus monkeys. *J. Immunol.* **147**:320–329.
28. Murphy, C. G., W. T. Lucas, R. E. Means, S. Czajak, C. L. Hale, J. D. Lifson, A. Kaur, R. P. Johnson, D. M. Knipe, and R. C. Desrosiers. 2000. Vaccine protection against simian immunodeficiency virus by recombinant strains of herpes simplex virus. *J. Virol.* **74**:7745–7754.
29. Peng, B., R. Voltan, L. Lim, Y. Edghill-Smith, S. Phogat, D. S. Dimitrov, K. Arora, M. Leno, S. Than, R. Woodward, P. D. Markham, M. Cranage, and M. Robert-Guroff. 2002. Rhesus macaque resistance to mucosal simian immunodeficiency virus infection is associated with a postentry block in viral replication. *J. Virol.* **76**:6016–6026.
30. Regier, D. A., and R. C. Desrosiers. 1990. The complete nucleotide sequence of a pathogenic molecular clone of simian immunodeficiency virus. *AIDS. Res. Hum. Retroviruses* **6**:1221–1231.
31. Rose, N. F., P. A. Marx, A. Luckay, D. F. Nixon, W. J. Moretto, S. M. Donahoe, D. Montefiori, A. Roberts, L. Buonocore, and J. K. Rose. 2001. An effective AIDS vaccine based on live attenuated vesicular stomatitis virus recombinants. *Cell* **106**:539–549.
32. Rott, L. S., J. R. Rose, D. Bass, M. B. Williams, H. B. Greenberg, and E. C. Butcher. 1997. Expression of mucosal homing receptor  $\alpha 4\beta 7$  by circulating CD4<sup>+</sup> cells with memory for intestinal rotavirus. *J. Clin. Investig.* **100**:1204–1208.
33. Rüssmann, H., H. Shams, F. Poblete, Y. Fu, J. E. Galán, and R. O. Donis. 1998. Delivery of epitopes by the *Salmonella* type III secretion system for vaccine development. *Science* **281**:565–568.
34. Schodel, F., and R. Curtiss. 1995. *Salmonellae* as oral vaccine carriers. *Dev. Biol. Stand.* **84**:245–253.
35. Shiver, J. W., T. M. Fu, L. Chen, D. R. Casimiro, M. E. Davies, R. K. Evans, Z. Q. Zhang, A. J. Simon, W. L. Trigona, S. A. Dubey, L. Huang, V. A. Harris, R. S. Long, X. Liang, L. Handt, W. A. Schleif, L. Zhu, D. C. Freed, N. V. Persaud, L. Guan, K. S. Punt, A. Tang, M. Chen, K. A. Wilson, K. B. Collins, G. J. Heidecker, V. R. Fernandez, H. C. Perry, J. G. Joyce, K. M. Grimm, J. C. Cook, P. M. Keller, D. S. Kresock, H. Mach, R. D. Troutman, L. A. Isopi, D. M. Williams, Z. Xu, K. E. Bohannon, D. B. Volkin, D. C. Montefiori, A. Miura, G. R. Krivulka, M. A. Lifton, M. J. Kuroda, J. E. Schmitz, N. L. Letvin, M. J. Caulfield, A. J. Bett, R. Youil, D. C. Kaslow, and E. A. Emini. 2002. Replication-incompetent adenoviral vaccine vector elicits effective anti-immunodeficiency-virus immunity. *Nature* **415**:331–335.
36. Steger, K. K., and C. D. Pauza. 1997. Immunization of *Macaca mulatta* with *araA* attenuated *Salmonella typhimurium* expressing the SIVp27 antigen. *J. Med. Primatol.* **26**:44–50.
37. Steger, K. K., P. J. Valentine, F. Heffron, M. So, and C. D. Pauza. 1999. Recombinant attenuated *Salmonella typhimurium* stimulate lymphoproliferative responses to SIV capsid in rhesus macaques. *Vaccine* **17**:923–932.
38. Streeter, P. R., E. L. Berg, B. T. N. Rouse, R. F. Bargatze, and E. C. Butcher. 1988. A tissue-specific endothelial cell molecule involved in lymphocyte homing. *Nature* **331**:41–46.
39. Veazey, R. S., M. DeMaria, L. V. Chalifoux, D. E. Shvets, D. R. Pauley, H. L. Knight, M. Rozenzweig, R. P. Johnson, R. C. Desrosiers, and A. A. Lackner. 1998. Gastrointestinal tract as a major site of CD4<sup>+</sup> T-cell depletion and viral replication in SIV infection. *Science* **280**:427–431.
40. Veazey, R. S., I. C. Tham, K. G. Mansfield, M. DeMaria, A. E. Forand, D. E. Shvets, L. V. Chalifoux, P. K. Sehgal, and A. A. Lackner. 2000. Identifying the target cell in primary simian immunodeficiency virus (SIV) infection: highly activated memory CD4<sup>+</sup> T cells are rapidly eliminated in early SIV infection in vivo. *J. Virol.* **74**:57–64.
41. Wang, R. F., and S. R. Kushner. 1991. Construction of versatile low-copy-number vectors for cloning, sequencing and gene expression in *Escherichia coli*. *Gene* **100**:195–199.
42. Williams, M. B., and E. C. Butcher. 1997. Homing of naive and memory T lymphocyte subsets to Peyer's patches, lymph nodes, and spleen. *J. Immunol.* **159**:1746–1752.
43. Wyand, M. S., K. H. Manson, M. Garcia-Moll, D. Montefiori, and R. C. Desrosiers. 1996. Vaccine protection by a triple deletion mutant of simian immunodeficiency virus. *J. Virol.* **70**:3724–3733.