

2014

A review of the primary types of the Hawaiian stag beetle genus *Apterocyclus* Waterhouse (Coleoptera, Lucanidae, Lucaninae), with the description of a new species

M. J. Paulsen

University of Nebraska State Museum, mjpaulsen@unl.edu

David C. Hawks

University of California, Riverside

Follow this and additional works at: <https://digitalcommons.unl.edu/entomologypapers>

Paulsen, M. J. and Hawks, David C., "A review of the primary types of the Hawaiian stag beetle genus *Apterocyclus* Waterhouse (Coleoptera, Lucanidae, Lucaninae), with the description of a new species" (2014). *Papers in Entomology*. 155.

<https://digitalcommons.unl.edu/entomologypapers/155>

This Article is brought to you for free and open access by the Museum, University of Nebraska State at DigitalCommons@University of Nebraska - Lincoln. It has been accepted for inclusion in Papers in Entomology by an authorized administrator of DigitalCommons@University of Nebraska - Lincoln.

A review of the primary types of the Hawaiian stag beetle genus *Apterocyclus* Waterhouse (Coleoptera, Lucanidae, Lucaninae), with the description of a new species

M.J. Paulsen¹, David C. Hawks²

1 Systematics Research Collections, University of Nebraska State Museum, W436 Nebraska Hall, Lincoln, NE 68588-0546 USA **2** Department of Entomology, University of California- Riverside, Riverside, CA 92521 USA

Corresponding author: M.J. Paulsen (mjpaulsen@unl.edu)

Academic editor: Andrey Frolov | Received 3 June 2014 | Accepted 31 July 2014 | Published 13 August 2014

<http://zoobank.org/065CFC3A-4DD8-4759-B55D-040FCC3351AA>

Citation: Paulsen MJ, Hawks DC (2014) A review of the primary types of the Hawaiian stag beetle genus *Apterocyclus* Waterhouse (Coleoptera, Lucanidae, Lucaninae), with the description of a new species. ZooKeys 433: 77–88. doi: 10.3897/zookeys.433.8022

Abstract

The species of the Hawaiian stag beetle genus *Apterocyclus* Waterhouse (Coleoptera: Lucanidae) are reviewed following an examination of all primary types. Although the continued existence of the species is unknown and some possibly are extinct there are five recently extant species, including one species that is described here as new. The holotypes for all available names are pictured, and synonymies discussed and updated. Lectotypes are designated for *Apterocyclus honoluluensis* Waterhouse and *A. munroi* Sharp. A key to species and a revised catalog for the genus are provided.

Keywords

Systematics, Scarabaeoidea, Hawaii, endemic, taxonomic revision

Introduction

The Hawaiian endemic genus *Apterocyclus* Waterhouse (Coleoptera: Lucanidae: Lucaninae) contains the only species of scarabaeoid beetles native to the Hawaiian Islands (Howden 2008). They represent the most isolated genus of stag beetle, being at least 3750 km distant from any other genus. As with several other island-endemic genera of

Lucanidae (*Agnus* Burmeister, *Amneidus* Coquerel, *Bomansius* Lacroix, *Microlucanus* Bomans & Bartolozzi, *Vinsonella* Arrow), species of *Apteroicyclus* are flightless. Previous workers have struggled with the high degree of morphological variability in the genus (Sharp and Scott 1908, Van Dyke 1922), which may be a result of limited gene flow in variably isolated populations due to flightlessness and the rugged terrain of Kaua'i.

Waterhouse (1871) described the genus and its first species as *A. honoluluensis* in honor of the origin of the shipment (Honolulu, Oahu), not the actual locality. This has become a famous case of misapplied geography in nomenclature; the genus is only found on the island of Kaua'i. Sharp attempted to address the high degree of morphological variation in the genus by proposing six additional species, although he suffered from a limited number of specimens to study (Sharp and Scott 1908). Van Dyke (1922) examined over 130 specimens, and the apparent morphological plasticity led him to synonymize Sharp's names and place all *Apteroicyclus* species together again under *A. honoluluensis*. Following Van Dyke, most of Sharp's species have been considered synonyms by subsequent authors. Of Sharp's six available names, only *A. waterhousei* Sharp is frequently recognized as distinct (e.g., Benesh 1960, Maes 1992, Jameson et al. 2009).

In 2011–2012, one of us (MJP) assisted the Natural History Museum, London, UK, in the location and repatriation of the seven Waterhouse and Sharp primary types of *Apteroicyclus* that had been out on a derelict loan forgotten by the borrower for more than a dozen years. After the types were returned and once again available for study we were able to reexamine this problematic genus and form species hypotheses based on morphology. The most useful characters studied included the shape of the protibia, mandibles, ocular canthus, and presence or absence of elytral setae. The male genitalia of all species are more or less uniform and not useful for delineating species. Even with the variability within species and lack of distinct male genitalia, we have identified five species that are supported by clear and consistent morphological differences. Although we believe Van Dyke's (1922) work on other lucanids to be more competent than his near contemporaries, we found that he was too conservative when he synonymized some of Sharp's species under *A. honoluluensis*. We readdress the synonymies and discuss the characters distinguishing five species below, including the description of one new species. A key is provided for the genus that is functional for all known specimens, although the females of three species remain unknown.

Materials and methods

Specimens of the genus are found in relatively few collections. We examined 143 specimens from or deposited in the following collections: Bernice P. Bishop Museum, Honolulu, HI, USA (BPBM), California Academy of Sciences, San Francisco, CA, USA (CASC); Canadian Museum of Nature Collection, Ottawa, ON, Canada (CMNC); M.J. Paulsen Collection, Lincoln, NE, USA (MJPC); Montana Entomology Collection, Bozeman, MT, USA (MEC); and the Natural History Museum, London, UK (NHM).

Results

Unfortunately, the number of *Apterocyclus* specimens available for study in public collections has not increased greatly since Van Dyke's study, and this may be due to the increased rarity of the species due to habitat loss and ecological change. Based on subfossils from caves at low elevation studied by Nick Porch (Deakin University, Australia), Elias (2010) considered it likely that 'most' of the *Apterocyclus* taxa had become extinct after the arrival of people, surviving only above 800-900m today. Indeed, very few specimens from the last half-century have been placed in institutional collections. For *A. honoluluensis* these include the 1972 CMNC pair reported by Howden (2008), over 40 specimens examined from 1975–1979 (BPBM, MEC), and one from 2005 (MEC). The two known specimens of *Apterocyclus kawaii* sp. n., are from 1978 (BPBM) and 1996 (Abbott and Petr 1997). The report in Jameson et al. (2009) of adult and larval specimens of *A. waterhousei* collected in 2004 is doubly incorrect; the single adult specimen associated with the larvae from the attempted rearing (MEC) is *A. honoluluensis*, and labels indicate that the larvae were collected in 2005, not 2004. While no recent specimens of *A. waterhousei* were located in institutional collections, as with *A. honoluluensis* the species has been found recently by amateur collectors. For example, the two specimens of *A. waterhousei* shown in Fujita (2010) are reported from 1997 and 1998. Because this means that only three of the five species have been confirmed to be extant during the last fifty years and with few specimens available for study of any species, the present distributions and conservation needs of all five species warrant urgent study. The following treatment is presented to clarify the taxonomy of the genus in preparation for such further studies, including a molecular study of the geographical origins of the genus by identifying their most closely related genera among world Lucanidae.

Taxonomic treatment

Apterocyclus honoluluensis Waterhouse, 1871

Figs 1–4, 12, 17

Apterocyclus honoluluensis Waterhouse 1871: 315. Type material: Lectotype male of *A. honoluluensis* (NHM) labeled: a) handwritten, "Kauai/ 4000 ft. / W.H. Pease / 71-29"; b) handwritten, "Apterocyclus / honoluluensis / ♀ (sic) Type C. Waterh. " c) red-bordered circular label "Type"; d) red paper, "*Apterocyclus* / *honoluluensis* ♂ / Waterhouse, 1871 / LECTOTYPE / des. M.J. Paulsen"; e) "*Apterocyclus* / *honoluluensis* / Waterhouse, 1871 / det. M.J. Paulsen 2012". Paralectotype of *A. honoluluensis* (NHM) = holotype of *A. deceptor*, below.

Apterocyclus deceptor Sharp in Sharp and Scott 1908: 405, synonymy confirmed. Type material: Holotype male of *A. deceptor* labeled: a) handwritten, "Kauai/ 4000 ft. / W.H. Pease / 71-29"; b) handwritten, "Apterocyclus / honoluluensis / ♂ Type

C. Waterh. “c) red-bordered circular label “Type”; d) handwritten, “*Apterocyclus / deceptor / Type D.S.*”; e) yellow paper, “*Apterocyclus / honoluluensis* ♂ / Waterhouse, 1871 / PARALECTOTYPE / des. M.J. Paulsen”; f) red paper, “*Apterocyclus / deceptor* ♂ / Sharp, 1908 / HOLOTYPE / des. M.J. Paulsen”; g) “*Apterocyclus / honoluluensis* / Waterhouse, 1871 / det. M.J. Paulsen 2012”.

Apterocyclus feminalis Sharp in Sharp and Scott 1908: 405, synonymy confirmed. Type material: Holotype female of *A. feminalis* (NHM) labeled: a) handwritten, on cork “*Platycernis feminalis*, / typ. D.S. / Kauai, 4000 ft. VII-’96 / Perkins”; b) “Sandwich Is. / 1912-215”; c) red-bordered circular label “Type”; d) red paper, “*Apterocyclus / feminalis* ♀ / Sharp, 1908 / HOLOTYPE / des. M.J. Paulsen”; e) “*Apterocyclus / honoluluensis* / Waterhouse, 1871 / det. M.J. Paulsen 2012”.

Apterocyclus varians Sharp in Sharp and Scott 1908: 404, synonymy confirmed. Type material: Holotype male of *A. varians* (NHM) labeled: a) handwritten, on cork “Mts: Waimea Kauai / 5000 ft. Perkins IV.1894 / *A. varians* / Type D.S.”; b) red-bordered circular label “Type”; c) “Sandwich Is. / 1912-215”; d) handwritten, “*varians* Sharp”; e) red paper, “*Apterocyclus / varians* / Sharp, 1908 / HOLOTYPE / des. M.J. Paulsen”; g) “*Apterocyclus / honoluluensis* / Waterhouse, 1871 / det. M.J. Paulsen 2012”.

Diagnosis. This smallest species (14–17 mm, rarely up to 21 mm) can be readily distinguished by the presence of a short but distinct ocular canthus (Fig. 1), which is not present in the remaining four species. Otherwise, as lamented by Van Dyke (1922), there is great morphological variability in the species. In most specimens the protibia lacks any external teeth proximal to the apex. A few specimens of each sex exhibit a single weak external tooth on the protibia, unlike the majority of specimens for which the entire external margin of the protibiae is otherwise a useful diagnostic character. Based on the specimens studied there is also pronounced variability in males in surface sculpture (shiny vs. alutaceous) and mandibular shape. Some male specimens have mandibles with traces of additional internal teeth. Females are more strongly shiny and can be distinguished by their mandibles completely lacking internal teeth and their more spherical abdomens. Without additional collecting to better define the distribution and pinpoint potentially isolated populations it is not possible to determine if the morphological variation present is actually taxonomically important.

Distribution. This was historically, and has been recently, the most commonly collected species. It is known from various localities in Kōke’e State Park.

Remarks. Waterhouse (1871) examined two specimens collected by Harper Pease in the “Mountains of Kanoi”, which may be a mistranslation of Kāua’i as we can find no locality with that name. Waterhouse considered the specimens to be a male and female. As indicated by Sharp (1908), both specimens actually are males. Waterhouse illustrated the “female” and Sharp (1908) considered that specimen to be the type



Figures 1–4. Primary types of *Apterocyclus honoluluensis* and its synonyms, with labels. **1** *A. honoluluensis* Waterhouse, lectotype **2** *A. deceptor* Sharp, holotype **3** *A. feminalis* Sharp, holotype **4** *A. varians* Sharp, holotype.

of *A. honoluluensis* (Fig. 1). We designate that specimen here as the lectotype of *A. honoluluensis*, in agreement with ICZN recommendation 74B. The other specimen becomes a paralectotype of *A. honoluluensis*, and it also is the holotype of *A. deceptor* Sharp (Fig. 2). The holotypes of *A. deceptor*, *A. feminalis* (Fig. 3), and *A. varians* (Fig. 4) are conspecific with *A. honoluluensis*, and these synonymies proposed by Van Dyke (1922) are reconfirmed.

Van Dyke (1922) indicated that the larvae were formerly abundant in the soil, when hundreds could be encountered while digging. Mizunuma (2000) reported that the larvae feed in soil that contains the decomposing trunks of the leguminous tree *Acacia koa* A. Gray (Fabaceae). Mizunuma (2000) also described the larvae of *A. honoluluensis* as being sensitive to, and killed by, high temperature. In 1972, Howden found evidence of heavy predation on adults of *A. honoluluensis* by introduced mice, as might be expected for a flightless insect exposed to a novel terrestrial omnivore (Howden 2008).

***Apterocyclus munroi* Sharp, 1908**

Figs 5–6, 14, 19

Apterocyclus munroi Sharp in Sharp and Scott 1908: 403, **revised status**. Type material: Lectotype male of *A. munroi* (NHM) labeled: a) handwritten, on cork “Type D.S. / *Apterocyclus munroi* / Kaula, Kauai, VII.1897 / G.C. Munro; b) red-bordered circular label “Type / H.T.”; c) “Sharp Coll. / 1905:313”; c) red paper, “*Apterocyclus / munroi* ♂ / Sharp, 1908 / LECTOTYPE / des. M.J. Paulsen”; g) “*Apterocyclus / munroi* / Sharp, 1908 / det. M.J. Paulsen 2012”. Paralectotype male (NHM) labeled: a) handwritten, on cork “*Apterocyclus / munroi* / 2nd Typ. D.S.”; b) “Sharp Coll. / 1905-313”; c) “BMNH(E) / #606199”; c) yellow paper, “*Apterocyclus / munroi* m / Sharp, 1908 / PARALECTOTYPE / des. M.J. Paulsen”; d) “*Apterocyclus / munroi* / Sharp, 1908 / det. M.J. Paulsen 2012”. Paralectotype male (NHM) labeled: a) handwritten, on cork “*A. munroi* 3rd Typ. D.S.” / Kaula, Kauai VII’97 / Munro; b) “Sharp Coll. / 1905-313”; c) “BMNH(E) / #606198”; c-d) as above.

Apterocyclus adpropinquans Sharp in Sharp and Scott 1908: 404, **syn. n.** Type material: Holotype male of *A. adpropinquans* (NHM) labeled: a) handwritten, on cork “*A. Adpropinquans* typ. / D.S. / Makaweli Kauai / Perkins”; b) “[260] Makaweli / Kauai [2-3000] ft. / Perkins VI-1894.”; c) “Sandwich Is. / 1912-215”; d) red-bordered circular label “Type”; d) red paper, “*Apterocyclus / adpropinquans* ♂ / Sharp, 1908 / HOLOTYPE / des. M.J. Paulsen”; e) “*Apterocyclus / munroi* / Sharp, 1908 / det. M.J. Paulsen 2012”.

Diagnosis. Mizunuma (2000) indicated that he considered the synonymy with *A. honoluluensis* to be incorrect based on the dentate protibiae that are more similar to those of *A. waterhousei*, and that the species might be distinct. We agree with this hypothesis. The protibiae of *A. munroi* are externally toothed giving a unique bidentate appearance to the apex (Fig. 5), but the basal two-thirds of the external margin varies from weakly serrate to more or less entire (as in the holotype of *A. adpropinquans*, Fig. 6). The protibiae of *A. waterhousei* are much wider throughout their length. The scattered long setae on the elytra, especially near the apex, and projected, apically expanded clypeus will readily distinguish *A. munroi* from the remaining species.

Distribution. Sharp (1908) described *A. munroi* from specimens collected “above Kaula” in 1897, but the identity of this locality is not clear. The holotype of the synonym *A. adpropinquans* is reported to be from Makaweli at 2-3000’. No recent specimens with more complete locality data have been studied.

Remarks. Sharp (1908) described *A. munroi* from four specimens, although only three are now present in the NHM. The specimen later labeled as the type is here designated as the lectotype. No female specimens have been examined. This and the other names proposed by Sharp (1908) in the *Fauna Hawaiiensis* are attributable to him alone. Although the publication lists D. Sharp and Hugh Scott as the authors of the Coleoptera section, the text for which Scott is responsible is clearly indicated by a superscript (e.g. Discolomidae (sic), p. 431) or is followed by his initials (p. 459). Thus the species have been indicated as being authored by Sharp in Sharp and Scott 1908.



Figures 5–6. Primary types of *Apterocyclus munroi* and its synonyms, with labels. **5** *A. munroi* Sharp, lectotype **6** *A. adpropinquans* Sharp, holotype.

Apterocyclus palmatus Van Dyke, 1921

Figs 7, 15, 20

Apterocyclus palmatus Van Dyke, 1921: 47, **new status**. Type material: Holotype male (CASC) labeled: a) handwritten “Kauai I. / Hawii (sic) / Alt. 4000 ft. / V-3-1919”; b) “Van Dyke / Collection”; c) handwritten “*Apterocyclus* / *honoluluensis* / var. *palmatus* / Van Dyke / Type”; d) “California Academy / of Sciences / Type / No. [3316]”. One male paratype (CASC) labeled as holotype *a, b, c* [but with ‘Paratype’]. One male paratype (BPBM) labeled a) “[4000 ft] Kauai / [4/28 - 19 N°5]”; b) “J. A. Kusche / Coll”; c) “[dissected / 10.X.21] / W.M. Giffard / [N° 5]”; d) handwritten “*Apterocyclus* / *honoluluensis* / var. *palmatus* / Van Dyke / Paratype”; e) on red paper “No. 24642 / Hawaiian Coll. / BISHOP Museum”. One male paratype (BPBM) labeled a) “[4000 ft] Kauai / [4/28 - 19 N°5]”; b) “J. A. Kusche / Coll”; c) handwritten “*Apterocyclus* / *honoluluensis* / var. *palmatus* / Van Dyke / Paratype”; d) on red paper “No. 24643 / Hawaiian Coll. / BISHOP Museum”. One male paratype (BPBM) labeled a) handwritten “Kauai I. / Hawii (sic) / Alt. 4000 ft. / V-3-1919”; b) handwritten “*Apterocyclus* / *honoluluensis* / var. *palmatus* / Van Dyke / Paratype”; c) handwritten “for / Mr. Giffard”; d) on red paper “No. 24644 / Hawaiian Coll. / BISHOP Museum”.

Diagnosis. The male mandibles are tusk-like, elongate, nearly twice as long as in any other species, and lack an internal tooth. Also diagnostic are the protibiae that are greatly, triangularly expanded at the apex (Fig. 7), and the projecting tridentate clypeus. The specimens studied are 22–23 mm in length.

Distribution. The species locality is unknown; the only available data is that the specimens were collected at an elevation of 4000 feet on Kauai by Mr. Kusche in 1919.

Remarks. Van Dyke (1922) examined five male specimens, and all were located. Female specimens are not known, and the species has not been collected recently. The clearest evidence of Van Dyke’s overly conservative approach to the genus is that he considered this taxon to be an infraspecific form of *A. honoluluensis*; it is arguably the most drastically distinct subspecies of stag beetle ever proposed.

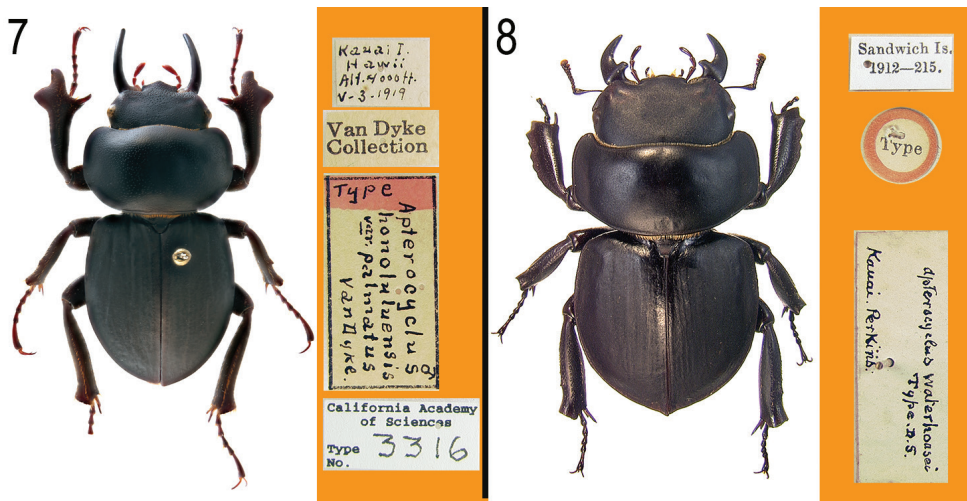
Apterocyclus waterhousei Sharp, 1908

Figs 8, 16, 21

Apterocyclus waterhousei Sharp in Sharp and Scott 1908: 403. Type material: Holotype male (NHM) labeled: a) handwritten, on cork “*Apterocyclus waterhousei* / Type D.S./ Kauai, Perkins”; b) “Sandwich Is. / 1912–215”; c) red-bordered circular label “Type”; d) red paper, “*Apterocyclus* / *waterhousei* m / Sharp, 1908 / HOLOTYPE / des. M.J. Paulsen”; e) “*Apterocyclus* / *waterhousei* / Sharp, 1908 / det. M.J. Paulsen 2012”.

Diagnosis. The large, median tooth present on the meso- and metatibiae mentioned by Sharp (1908) for the holotype is present on all other specimens of both sexes, and not found in any other species. These large teeth, in addition to the broad, serrate protibiae and almost obsolete canthus separate this species from *A. honoluluensis* (a few *A. honoluluensis* have a weakly indicated tooth on the mesotibiae). The species is most similar to *A. munroi*, but lacks distinct setae on the elytra and the anteriorly divergent clypeus. Specimens range from 18 to 22 mm in length.

Distribution. Specimens have been examined from Kohua/Mohiki [Mohihi?] Stream, Kaholuamano, and near Waialae River (BPBM). Mizunuma (2000) illustrated



Figures 7–8. Primary types of *Apterocyclus* species. **7** *Apterocyclus palmatus* Van Dyke, holotype **8** *A. waterhousei* Sharp, holotype.

specimens from Po'oumau Canyon, and Fujita (2010) included specimens from Kohua Ridge and Po'oumau Canyon.

Remarks. Described from a single male, Sharp (1908) noted the thick legs, 'crenulate' protibiae, and pointed elytral apices (Fig. 8). No other specimens have been seen that exhibit the pointed elytral apices of the holotype, and we consider the character to be possibly aberrant and not of specific-level importance.

***Apterocyclus kawaii* Paulsen & Hawks, sp. n.**

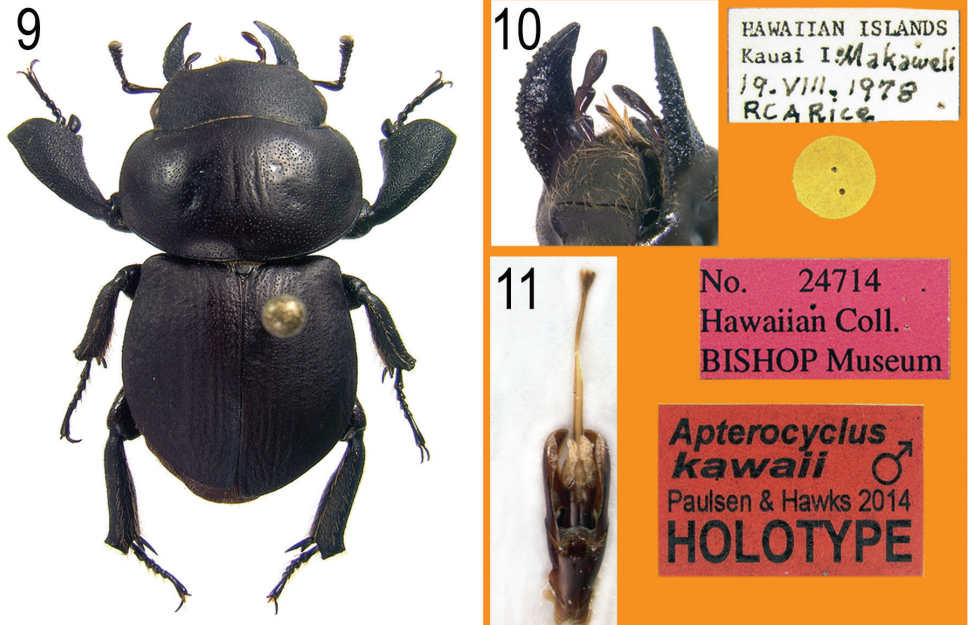
<http://zoobank.org/73AD6671-F108-4C0F-840E-28FDD94A4842>

Apterocyclus kawaii Paulsen & Hawks, new species. Type material: Holotype male (BPBM) labeled: a) "HAWAIIAN ISLANDS / Kauai I. [Makaweli] / [19.VIII.1978 / RCA Rice"; b) red paper "No. 24714 / Hawaiian Coll. / BISHOP museum"; c) red paper, "*Apterocyclus / kawaii* ♂ / Paulsen & Hawks 2014 / HOLOTYPE". **Type locality:** USA, Hawaii, Kauai Co., Makaweli. Paratype male (MJPC) labeled: a) "Hawaii: Kauai / Robinson Plant Preserve / 21.V.1996 / J.C. Abbott #494; b) black-bordered "[*Apterocyclus / honoluluensis* Wat.] / Det. John C. Abbott / [1996]; c) yellow paper, "*Apterocyclus / kawaii* ♂ / Paulsen & Hawks 2014 / PARATYPE".

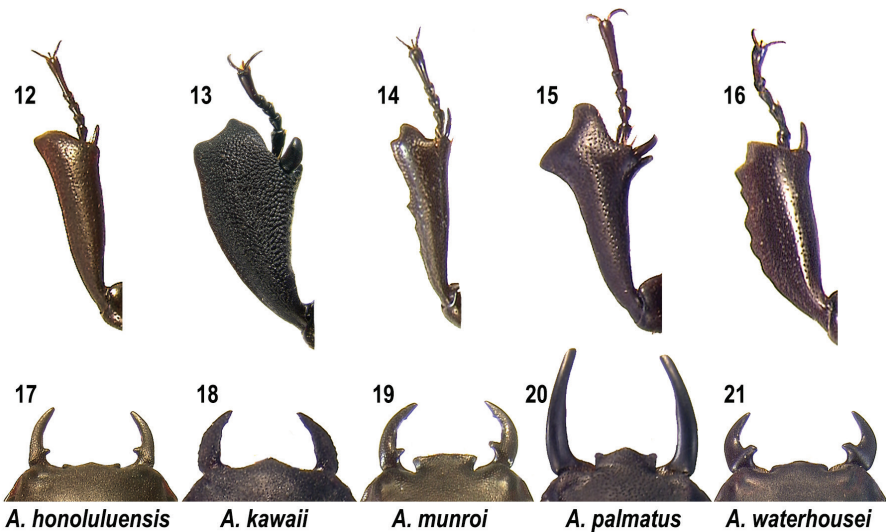
Diagnosis. This distinctive species (Fig. 9) can be immediately recognized by the tubercles present on the ventral surface of the mandibles (Fig. 10). These are not found in any of the described species. Also, the greatly expanded shape, concavity, and rugosity of the protibiae are distinctive (Fig. 9). All other *Apterocyclus* specimens examined have sparsely punctate protibial surfaces, and only *A. palmatus* also possesses an internal tooth on the protibia.

Description, holotype. *Length:* 16.5 mm. *Width:* 8.2 mm (pronotum). *Color:* Black. *Head:* Surface granulate and with scattered moderate punctures. Eyes with ocular canthus almost obsolete. Antennal club small, short (shorter than scape), antennomeres 8 and 9 of club tomentose only distally, visible surfaces of antennomere 10 more or less entirely tomentose. Clypeofrontal area tumid. Clypeus short, not projecting, broadly triangular with pointed apex. Mandibles short, simply falcate (lacking internal tooth, but with irregular internal margin), broadly flattened; surface externally and ventrally with numerous small tubercles (Fig. 10). Mentum semicircular, surface granulate, setose. *Pronotum:* Form short, wider than elytra, broadly rounded laterally (posterior angles obsolete). Surface shiny on disk with moderately deep punctures, becoming granulate near angles. *Elytra:* Form almost circular, as wide together as long. Surface alutaceous but weakly shiny with moderate, shallow punctures, some in vague rows. *Legs:* Protibiae concave ventrally, widened apically, surface densely, rugosely punctate; external margin with one large tooth near apex. Apical spur short, spatulate. Meso- and metatibiae robust, lacking external teeth. *Abdomen:* Male genitalia (Fig. 11) with permanently everted internal sac flared at apex (as in congeners).

Paratype variation. *Length:* 22.9 mm. *Width:* 10.8 mm. *Head:* Clypeofrontal area indented; clypeus with apex less acute.



Figures 9–11. 9 Holotype of *Apterocyclus kawaii*, sp. n., with labels. 10 Mandibles, oblique ventral view showing tubercles 11 Male genitalia.



Figures 12–21. Left protibia and mandibles of *Apterocyclus* species. 12, 17 *A. honoluluensis* 13, 18 *A. kawaii* 14, 19 *A. munroi* 15, 20 *A. palmatus* 16, 21 *A. waterhousei*.

Etymology. The species is named for our colleague Shinya Kawai, of Tokyo, Japan, in honor of his work on Lucanidae, especially on the similarly flightless genus *Colophon* Gray of South Africa, and in gratitude for the assistance he has provided to MJP in both research and field collecting in Japan. The specific epithet is a noun in the genitive case.

Distribution. Two specimens are known, both males, from the Makaweli [Kau-makani] area.

Remarks. Nothing is known of the life history of this species. Although published as a rediscovery of *A. honoluluensis*, the specimen discussed by Abbott and Petr (1997) is the paratype of this new species. The specimen was collected at dusk on a footpath along a ridge at 1000m (Abbott and Petr 1997), although the specimen is damaged and appears to have been stepped upon.

Key to the recent species of *Apterocyclus* Waterhouse*

- 1 Mandibles ventrally tuberculate (Fig. 10); protibia broad and densely, rugosely punctate dorsally (Fig. 13)..... *A. kawaii* Paulsen & Hawks, n. sp.
- 1' Mandibles simply punctate, not tuberculate; protibia simply and sparsely punctate dorsally..... 2
- 2 Ocular canthus distinct. Exterior margin of protibia usually entire, not strongly dentate (Fig. 12)..... *A. honoluluensis* Waterhouse
- 2' Ocular canthus obsolete. Exterior margin of protibia dentate with at least 1 external tooth after apex (Figs 14-16)..... 3
- 3 Protibia with 1 large external and 1 large internal tooth (Fig. 15); mandibles longer than head, lacking internal tooth (Fig. 20)... *A. palmatus* Van Dyke
- 3' Protibia externally weakly to distinctly serrate, without internal tooth; mandibles shorter than head, with internal tooth (Figs 19, 21) 4
- 4 Elytra with distinct setae near apex. Meso- and metatibiae unarmed..... *A. munroi* Sharp
- 4' Elytra with setae indistinct. Meso- and metatibiae with distinct external median tooth..... *A. waterhousei* Sharp

*Females are known only for *A. honoluluensis* and *A. waterhousei*. In these two species the protibial form is identical in both sexes. This may not be true for *A. kawaii* and *A. palmatus* given the more distinctive male protibiae. Females that lack ocular canthi should be tentatively identified until the females of all species are known.

Revised catalog

APTEROCYCLUS Waterhouse, 1871: 315

Apterocyclus honoluluensis Waterhouse 1871: 315

Apterocyclus deceptor Sharp in Sharp and Scott 1908: 405, synonym

Apterocyclus feminalis Sharp in Sharp and Scott 1908: 405, synonym

Apterocyclus varians Sharp in Sharp and Scott 1908: 404, synonym

Apterocyclus kawaii Paulsen & Hawks, new species

Apterocyclus munroi Sharp in Sharp and Scott 1908: 403, revised status

Apterocyclus adpropinquans Sharp in Sharp and Scott 1908: 404, new synonymy

Apterocyclus palmatus Van Dyke, 1921: 47, revised status
Apterocyclus waterhousei Sharp in Sharp and Scott 1908: 403

Acknowledgements

We thank Dr. Neal Evenhuis (BPBM) and Dr. Mike Ivie (MEC) for assisting with loans of specimens; Dr. Max Barclay and Malcolm Kerley (NHM) for facilitating the loan of the rediscovered types; Dr. John C. Abbott for depositing the paratype of *A. kawaii* in MJP's research collection; and Dr. Nicolas Porch (Deakin University, Australia) for his ongoing collaboration and discussions about subfossil *Apterocyclus*. Thank you to reviewers Dr. Luca Bartolozzi and Dr. Andrew Smith and editor Dr. Andrey Frolov for their valuable comments on the manuscript.

References

- Abbott JC, Petr D (1997) Rediscovery of *Apterocyclus honoluluensis* Waterhouse on Kauai (Coleoptera: Lucanidae). Bishop Museum Occasional Papers 49: 19.
- Benesh B (1960) Lucanidea (sic). Coleopterorum Catalogus, Supplementa (Second Edition) 8: 1–178.
- Elias SA (2010) Advances in Quaternary entomology. In: van der Meer JJM (Ed.) Developments in Quaternary Science 12: 1–304.
- Fujita H (2010) The Lucanid Beetles of the World. Mushi-Sha, Tokyo, 472 pp.
- Howden HF (2008) In past years - XIII 1970–1974. Scarabs [Newsletter] 30: 15–21.
- Jameson ML, Oishi DE, Ratcliffe BC, McQuate GT (2009) Two additional invasive scarabaeoid beetles (Coleoptera: Scarabaeidae: Dynastinae) in Hawaii. Proceedings of the Hawaiian Entomological Society 41: 25–30.
- Maes J-M (1992) Lista de los Lucanidae (Coleoptera) del mundo. Revista Nicaraguense de Entomologia 22: 1–121.
- Mizunuma T (2000) Stag beetles II (Lucanidae). Endless Collection Series 5. Toshitsugu Endo, Tokyo, 101 pp.
- Sharp D, Scott H (1908) Fauna Hawaiiensis or the zoology of the Sandwich (Hawaiian) Isles: being results of the explorations instituted by the Joint Committee appointed by British Association for the Advancement of Science and carried on with the assistance of those bodies and of the Trustees of the Bernice Pauahi Bishop Museum at Honolulu 3(5): 367–579.
- Van Dyke E (1922) A study of the lucanid Coleoptera of the Hawaiian Islands. Proceedings of the Hawaiian Entomological Society 5(1): 39–49.
- Waterhouse CO (1871) On a new genus and species of Coleoptera belonging to the family Lucanidae, from the Sandwich Islands. Transactions of the Entomological Society of London 1871(2): 315–316.