

University of Nebraska - Lincoln

DigitalCommons@University of Nebraska - Lincoln

Hexapod Herald & Other Entomology Department
Newsletters

Entomology, Department of

1976

Department of Entomology Newsletter, University of Nebraska, No. 4 -- 1976

Lyle E. Klostermeyer Editor
University of Nebraska - Lincoln

Follow this and additional works at: <https://digitalcommons.unl.edu/hexapodherald>



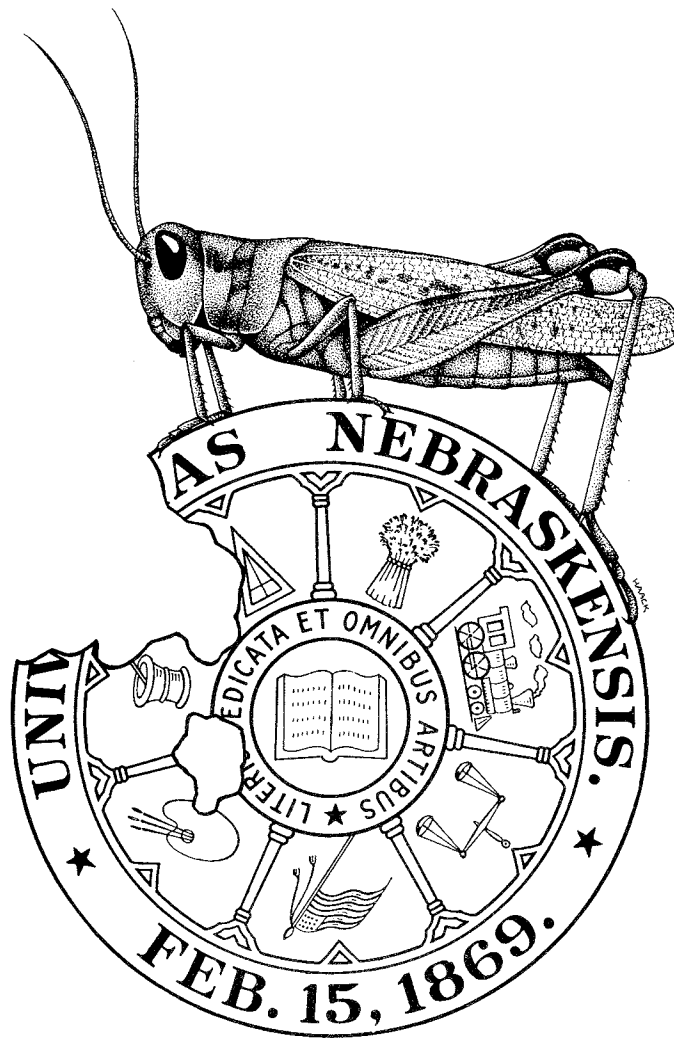
Part of the [Entomology Commons](#), and the [Science and Mathematics Education Commons](#)

Klostermeyer, Lyle E. Editor, "Department of Entomology Newsletter, University of Nebraska, No. 4 -- 1976" (1976). *Hexapod Herald & Other Entomology Department Newsletters*. 49.

<https://digitalcommons.unl.edu/hexapodherald/49>

This Article is brought to you for free and open access by the Entomology, Department of at DigitalCommons@University of Nebraska - Lincoln. It has been accepted for inclusion in Hexapod Herald & Other Entomology Department Newsletters by an authorized administrator of DigitalCommons@University of Nebraska - Lincoln.

DEPARTMENT OF ENTOMOLOGY NEWSLETTER



UNIVERSITY OF NEBRASKA
NO. 4  **1976**

FRONT COVER

The migratory grasshopper, Melanoplus sanguinipes (Fabr.), illustrated on the front cover, and its migratory phases were the subject of considerable research by entomologists at the University of Nebraska in the late nineteenth century. Lawrence Bruner, the "father" of Nebraska entomology and the namesake for the Department of Entomology club, was particularly active in studying this pest species.

Special thanks go to Martha J. Haack, Scientific Illustrator, University of Nebraska State Museum, for the preparation of the cover.

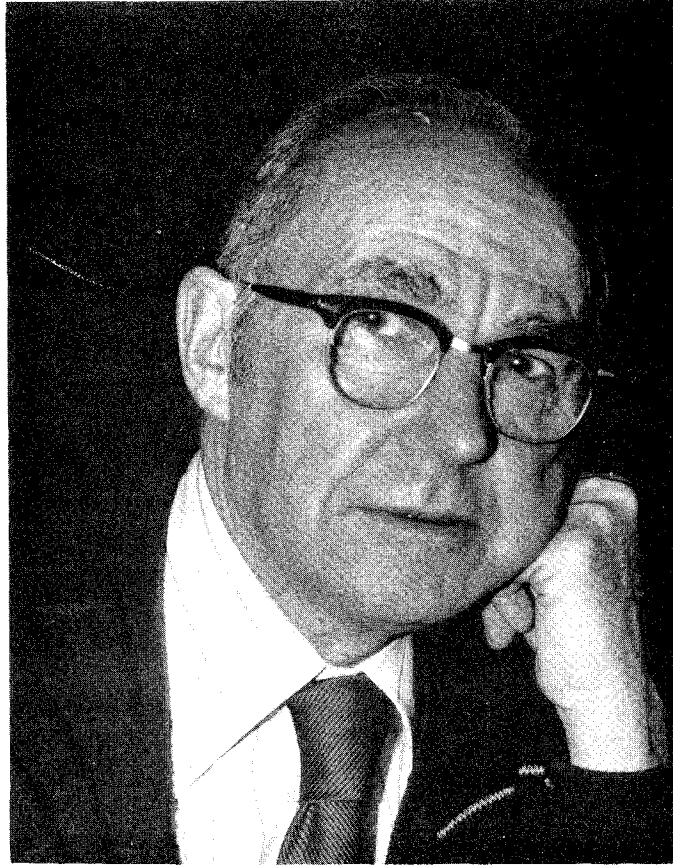
This Fourth Newsletter
of the Department of Entomology
University of Nebraska
is Sincerely Dedicated to

ROSCOE E. HILL

and

ESTHER A. "SALLY" SCHOCK

in Appreciation of their
Long and Distinguished Service



ROSCOE E. HILL

Roscoe Earle Hill retired July 1, 1976 after 44½ years since his first association with the University of Nebraska as a freshman. Roscoe joined the staff in 1940; served as chairman from 1950 to 1966; and has devoted his time since to research and teaching.

Roscoe was one of the first investigators using soil insecticides to prevent corn rootworm and potato flea beetle damage in Nebraska. While chairman he continued research with the European corn borer and is one of the most knowledgeable persons in the United States about corn borer population fluctuations and natural control factors.

The entomology department expanded greatly with Roscoe at the helm. The new Insectary Building and USDA Forage Insect Laboratory were built; a USDA Livestock Insects program was started; the first survey entomologist was employed and the permanent staff increased from seven to ten. The first out-state entomology positions were developed at Scottsbluff and North Platte. A PhD program was approved for the department in 1958, and the first doctorate granted in 1961.

We remember Roscoe with a linoleum knife cutting corn stalks, digging potatoes, stalking the elusive flea beetle, and with a bowling ball stuck on his thumb. We salute him and dedicate this Newsletter to Roscoe.



"SALLY"

ESTHER A. SCHOCK

Esther Augusta Schock retired October 31, 1974, after 31 years of long, loyal service. She began working in 1928 and has served every Department Chairman except the first, Lawrence Bruner. During this period she had several leave-of-absences while raising two children.

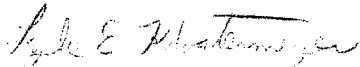
Sally, as she was affectionately known, has served as a secretary, librarian, and administrative assistant to the staff, and as a friend and "housemother" to generations of graduate students. Her vitality, efficiency, quick wit, department loyalty, and genuinely friendly personality are ideals we can all hope to emulate. There will never be another Sally like our Sally, and for those of us fortunate enough to know her and to have worked with her, we are indeed richer for it. With these fond memories in mind we dedicate this Newsletter to Sally.

FOREWORD

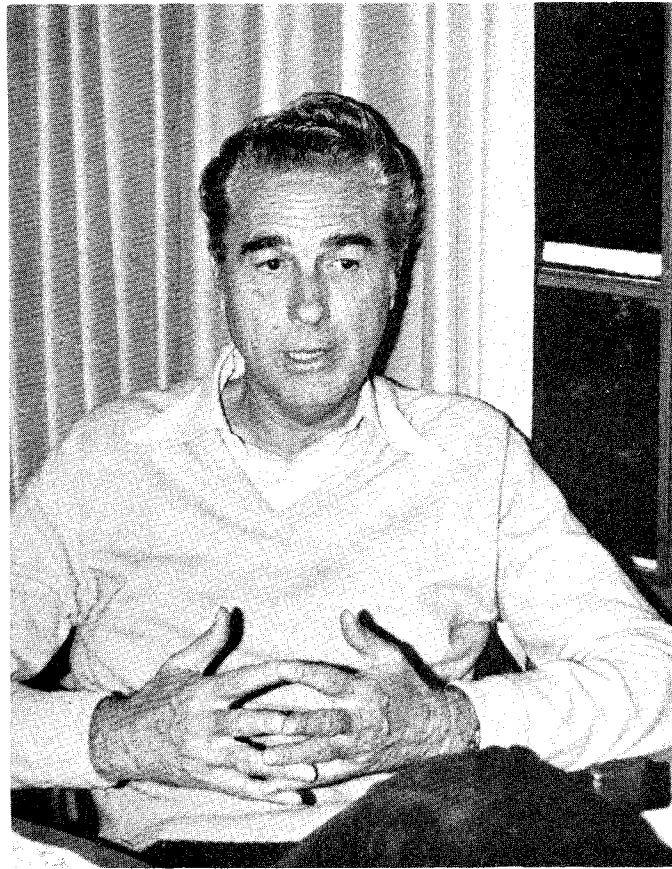
At long last the Fourth Department of Entomology Newsletter is complete. In the eight years since the last Newsletter there have been many advances and changes in the Entomology Department. I hope this Newsletter will bring alumni and friends up to date on the doings of the Department and of their fellow alumni.

It is only with the cooperation of the alumni, staff, and students that this endeavor was possible. Special thanks to the Newsletter Committee (Ron Rivers, Brett Ratcliffe, Bruce Monke, and Tim Miller) for their assistance; to Drs. Hill, Dickason and Helms for their contributions; to Marty Haack for the excellent work on the cover; to Marcia Fuhrer and Rosie Moats for the typing and to Marcia for the mimeographing; and the staff and students for enduring the unexpected and persistent flash of the Editor's camera. The financial assistance of the Bruner Entomology Club is also appreciated.

Please keep us informed of your activities and whereabouts. We would appreciate any information about alumni from whom we did not receive completed questionnaires.



LYLE E. KLOSTERMEYER
Editor



The Newsletter Committee has succeeded in documenting departmental activities in an outstanding manner. All of us in the department appreciate the wonderful efforts and many hours spent by the Newsletter Committee: Brett Ratcliffe, Ron Rivers, Bruce Monke, Tim Miller and particularly the leadership of Lyle Klostermeyer as Committee Chairman. The typing assistance of our secretarial staff is greatly appreciated.

The many changes in personnel and programs that have taken place during the period since the 1968 publication of Departmental Newsletter No. 3 are well covered in various sections of the newsletter. We also compliment the Committee on their choice of dedicating this issue to Roscoe Hill and Sally Schock, two people well known to all receiving the Newsletter.

Thank you for your participation in responding to the Committee's questionnaire, and we look forward to all of you visiting the department. We particularly welcome you to visit the campus and the department during the April 23, 1977 meeting of the Central States Entomological Society under the leadership of Roscoe Hill, 1976-77 President. Looking ahead, we will also be hosting the 1980 meeting of the North Central Branch of the Entomological Society of America in Lincoln.

Best wishes to all former associates of the department and we hope you enjoy Departmental Newsletter No. 4.

ELVIS A. DICKASON
Chairman (1970 -)

PLANT INDUSTRY FIRE

A phone call in the early hours of Friday, August 22, 1975 was the start of a very traumatic and tiring experience for the occupants of the Plant Industry Building (PI) on the East Campus of the University of Nebraska. At 1:45 AM a night dishwasher at Valentino's Pizza Parlor (35th & Holdrege) saw the roof of PI Building in flames and turned in the alarm. The fire, of electrical origin, started in and was confined to the attic. Everything in the attic was destroyed. Losses on the floors below were due mainly to water damage as the firemen fought into the early morning to extinguish the blaze (the last fire truck left the scene after 8 AM). At least two people were in the building late that night and left without being aware of the fire as they had not gone into the attic (one a plant path grad student left at 1:30 AM and myself left at 12:30 AM). The total damage was \$704,476 (compare this to the \$85,000 it cost to construct the building in 1912). Part of the damage was covered by insurance as the University had taken out a \$500,000 deductible policy effective July 1, 1975.

The University got right to work with contracts let the next week for the removal of the remains of the pitched roof. Later, contracts were for replacement of the roof with a flat one, and restoration of the rest of the building. Dr. T.E. Hartung, Dean of the College of Agriculture set a target of 60 days for reoccupancy of PI building. The order of the work was RESTORATION not RENOVATION. The university did make some changes in the building which were most convenient at this time or which helped bring the building up to fire codes. These included a new ventilation system (with coils for chilled water installed but not to be connected until 1978), completing of a fire detector system, a fire escape on the south end of the building, an enclosed stair case in the center of the building with fire doors on both sides of the stairs, and new fire-proof doors for all hallway doors. The addition of the fire escape on the south resulted in the loss of half of the Insect Pathology Laboratory (old office) which became a hallway to the new fire escape. The wall cabinets and sink were moved into the corner room with the main loss being table top space.

Damage to the Entomology Department on second floor was mainly from water which came through old holes in the ceiling and flooded the floor with upwards of 3 inches of sooty water. The Fire Marshall estimated that there had been 7 tons of water on second floor. Dr. Pruess found that his "piling" system (on top of his desk) was all wet as his office and lab were deluged with water. Other hard hit areas on second floor were the secretaries' desks in the main office, the technicians desk in extension, the teaching lab in the SE corner, Z B Mayo's office in the NE corner, and the graduate student room in the NW corner. In all these rooms water came through old holes in the ceiling. Saturated ceiling tiles fell causing some secondary damage as well as soaking some graduate students as they worked to remove the saturated ones. Damage may have been worse if Jerry Bell (USDA APHIS who had been housed in room 213) had not moved out the previous day, August 21, into the new Federal Building in downtown Lincoln. Jerry was kidded about having some type of ESP or something. Entomology lost no experimental data or important records. Since our valuable insect collection had been removed from PI in early 1970 to

the University Museum quarters in Nebraska Hall (old Elgin Building) on City Campus it escaped what surely would have been serious damage!

The Entomology Staff was displaced to study cubicles in C. Y. Thompson Library with graduate students going to the Entomology Laboratory Annex (Livestock Insects Lab), the Insectary, and the Forage Insect Lab. As the fire occurred on Friday before the start of fall semester, arrangements were made to move classes into other buildings. Most of the entomology classes were moved to the Insectary with the exception of the Introductory lab which was taught in one of the Food Science Labs. All microscopes, collections, and other teaching materials had to be checked out of PI and carried over to Filley Hall. Dr. Dickason spent much of his time in the PI building where he was able to bring to the attention of the restoration personnel things which needed to be done. All this helped as we were able to move back into the building 60 days to the day after the fire - right on target. We did have to put up with painters, carpenters, cleaner-uppers, and jack hammers as the restoration on the rest of the building proceeded.

Of the departments housed in PI, Plant Pathology was the hardest hit. It was estimated that a third of the effectiveness of their programs was lost. Experiments in the growth rooms in the attic were completely destroyed and they had extensive water damage in their third floor quarters. Dr. Myron Brahke, Nebraska's only member of the National Academy of Sciences, lost some irreplaceable virus material. However, we heard that his children were more concerned about whether the insect displays on second floor were damaged than in what their father lost. The Plant Pathology staff was displaced for about 4 1/2 months before their restoration was completed. Some of their personnel were quartered in the Greenhouses, some shared space in the Biochemistry and Nutrition Building and their Extension Personnel were housed in the Library study cubicles. The destroyed growth rooms in the attic were replaced with growth chambers which are housed in the old Maintenance building - not as handy as having them upstairs.

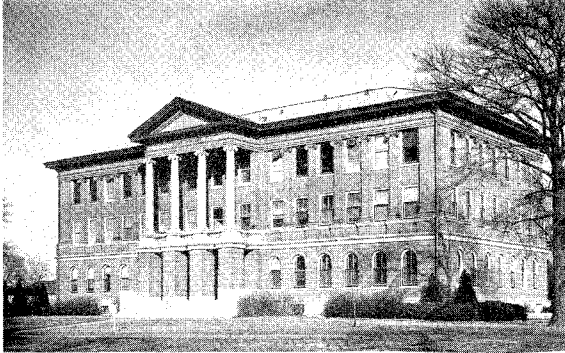
The Horticulture Department on first floor of PI was moved to the Stewart Seed Lab for two months before they moved back into the building at the same time as Entomology. Their extension personnel were housed in the Library with the Extension personnel from the other departments. The Tumor Biology Laboratory in the basement did not have to move as power was restored after several days to the lower parts of the building. However, they did move some of the research animals for several days. Their biggest problems was the inconvenience of the whole mess although some water damage was sustained.

Although it was a traumatic experience, everyone in the department did work to overcome the obstacles. Everything in PI is back on its normal, confused, hectic course. We still see evidence of the fire in the paint which is still peeling in places even after being repainted 2-3 times. We realize it all could have been much worse - in fact, we in Entomology were actually LUCKY!

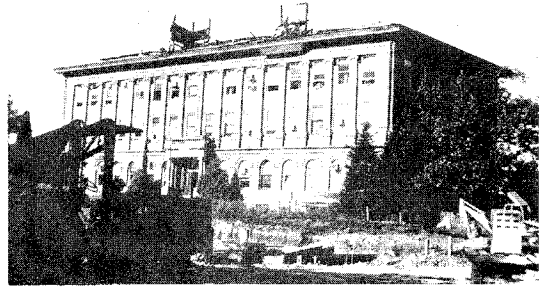
Lyle Klostermeyer

PLANT INDUSTRY BUILDING FIRE

AUGUST 22, 1975



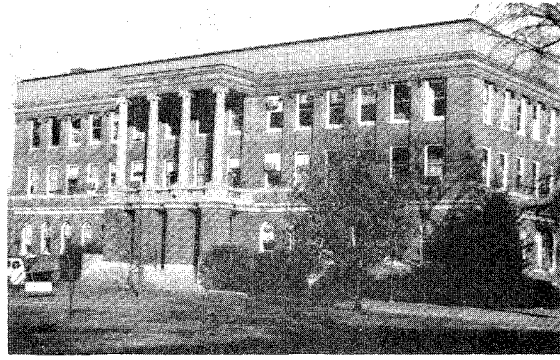
1968



AFTER FIRE
Back View with New
Union Construction



"TOPLESS"



NEW LOOK

DAMAGED AREAS



SECOND FLOOR
HALLWAY



MAIN OFFICE



CLASS ROOM

MYRON H. SWENK MEMORIAL FUND

Myron Swenk was Chairman of the Department of Entomology from 1919 to 1941. His sister left approximately \$12,000 to the University of Nebraska Foundation in memory of her brother and specified that earnings from the funds would be used in the Department of Entomology.

Within the department, a format was developed in which scholarship grants-in-aid would be awarded to undergraduate or graduate students in entomology for attendance at scientific meetings or to meet expenses (supplies, publication costs, etc.) associated with research studies. Applications are reviewed on the departmental level by a committee composed of officers and faculty advisors of the Bruner Entomology Club and the Department chairman.

The memorial fund was established during 1970 and since that time 35 awards have been made to students in entomology for a total of \$3,336.20. The success of the program is illustrated by the fact that at the close of the 1975-76 academic year the balance available in earnings was slightly less than \$25.00. The department and students are very grateful to Miss Iva B. Swenk for her thoughtfulness in establishing this meaningful memorial for her brother.

E. A. Dickason

BRUNER ENTOMOLOGY CLUB

The 1976-77 Bruner Entomology Club Officers are: Don Carpino, President; Jim Ballard, Vice President, and Robert Rosellè, Jr., Secretary-Treasurer. The current emphasis of the club is an Occupation Outlook Symposium (see below). Last spring, under the leadership of Time Miller, the club prepared collections of immature insects for sale to pest management firms. It was a successful venture which placed the club in a very good financial position. Speakers last fall were: Lyle Klostermeyer - Annual Field Trip Report and Dr. M.K. McCarty - Biological Control of Musk Thistle.

OCCUPATION OUTLOOK SYMPOSIUM

A spring semester 1977 activity of the Bruner Entomology Club has been the Occupation Outlook Symposium. Don Carpino and Walt Gary organized the "sack lunch" symposium as an opportunity for students to learn more about prospective employment for Entomologists. The students were able to speak informally with professionals about educational qualifications, responsibilities and benefits of their positions. Invited speakers included: Bill Cords, State Leader of Personnel - Ag Extension Service; George Woolsey, Clay County Extension Agent; Leroy Peters, South Central District Entomologist; Earle Raun, Pest Management Consultants, Inc.; Jerry Bell, USDA, PPQ, APHIS; Wolfgang Brandner, EPA Pesticides Branch; Ackland Jones, State Entomologist; Jerry Zenk, FMC District Manager; and Bill Bartzatt, AIDEX Sales Representative.

CAMPUS CHANGES Since the Last Newsletter

The face of East Campus (formerly called Ag. Campus) continues to change visibly. All the campus streets and drives now have names.

Out beyond the old sheep barn and just west of the pines along the west side of the old orchard is a new Law College Building. North across Fair Street is the new Vet. Science Diagnostic Laboratory. South and a little west of the Law College stands the just completed 1.2 million dollar Barkley Memorial Center for Handicap Services. An improved outdoor recreational area, including tennis courts, occupies the space northeast of the Dental College where dairy cattle used to graze and chew. The cows now do their thing at the University Field Laboratory near Mead some 30 miles north of Lincoln.

Right back of Plant Industry Building (the home of our Department of Entomology) a new 4.5 million dollar East Campus Student Union is going up. This large structure (which interestingly will contain a 6-lane bowling alley!!) is being crowded between P.I. and Miller Hall, the old red bricked Animal Science Building, now used by the Statistical Laboratory personnel and some of the Forestry staff. A new federally financed Forestry Building is located on the corner of North 38th and East Campus Loop north of the Poultry Science Building and just west of Marvel Baker Hall (Dept. of Animal Science). On north of there and along Deadman's Run are new greenhouses for Forestry, Agronomy, etc.

At the northwest corner of the campus a Nebraska Games and Parks Commission Building has been constructed.

Across the mall west from Plant Industry stands a new Home Economics Building which is joined to the remodeled Foods and Nutrition Building by an overpass over Center Drive. Out west of the old Student Activities and off 33rd street right where Dr. Werner formerly planted his potato experiments stands a very fine structure housing the Nebraska Educational Television Studios and equipment.

The old Dairy Building is now called H.C. Filley Hall and appropriately houses Agricultural Economics and the new Food Science and Technology Department.

What of the future? A new Plant Science Building is under construction just north of Keim Hall. When finished, Horticulture, Plant Pathology and a portion of Agronomy will occupy this new structure. The Plant Industry Building then will be remodeled (how much more can this building take?) and Entomology will expand upward and take over the third floor as well as the second as at present.

That's about it. It doesn't look like they ever will get the place finished!

Roscoe Hill

ENTOMOLOGY MUSEUM

The Division of Entomology of the University of Nebraska State Museum moved out of Plant Industry Building and into new quarters in October 1969. The collections (along with Botany, Zoology, Parasitology, Anthropology, and Vertebrate and Invertebrate Paleontology) are now housed on the renovated 4th and 5th floors of the west end of Nebraska Hall on the City Campus in the Museum's Systematic Biological Research Collections facility. Entomology now enjoys a security system and 2,600 sq. ft. of well-lit, air-conditioned space in three large rooms as well as an adjacent seminar room and darkroom; the computing facility, print shop, and photo productions are just downstairs. Research efforts are greatly enhanced by the proximity of these services, but a severe drawback, naturally, is the fact that the collections are now physically removed from the Department, and this fragmentation has not helped collection use nor staff and student access.

The collections currently number about 1.75 million specimens and are continually studied by students and specialists from around the world. The holdings in the Division of Entomology represent one of the two major insect collections for the Great Plains, and the Systematic Collections of the Museum have been declared one of the 31 major national systematic collections in the United States and an essential resource in systematic biology. Ironically, there are currently no graduate students working in systematics in the Department.

The Museum-Department field trip is still taken but on a more irregular basis due to declining enrollment and changing emphasis. Since publication of the last newsletter, the annual field trip has gone to the Nebraska National Forest at Halsey in Thomas Co., (1969), Milburn in Custer Co. (1970), Harrison in Sioux Co., (1971), the University of Nebraska Sandhills Ag Lab in McPherson Co., (1973), Spencer Dam vicinity in Holt Co., (1974), and Indian Cave State Park in Richardson Co., (1976). The field trip remains the major way in which specimens are acquisitioned from Nebraska locales as well as the prime method by which students are taught essentials of specimen collection and preparation.

Brett Ratcliffe

FIELD TRIPS

Field trips would never be field trips without those shining examples of dedication, wit, intelligence, bumbling stupidity, courage, competition, and other vicissitudes of the "collector." A few of these examples might serve to remind or acquaint you with some of the more memorable experiences encountered on field trips since the last Newsletter. Ken Pruess became lost one night for several HOURS during the Halsey trip; he was awarded the Bruner Entomology Club's monthly SNAFU award (the Bruner Blunder) for his trail-blazing qualities. John Baker successfully crashed his car into just about the only tree in the sandhills during the SAL trip; for that (and allowing hungry formicids to crawl through a hole in the crotch of his pants at a strategic point) he was also awarded the Bruner Blunder Award. And during the Spencer trip, Ken (again) managed to pull our large, horse trailer-turned-camper through a solitary mud puddle in our road and so become hopelessly stuck; for that, and having his beard trimmed with tin snips by a local tavern owner (who shot flies from the ceiling of his establishment with a pistol)..... you guessed it. Russ Whitmore seemed to be the most photogenic while

making bait for certain beetles during the Spencer foray while Bob Roselle, Jr. prowled the forests of Indian Cave State Park alone at night (without a light) howling like a wolf. Our collectors have taken up the initiative with regards to field testing new collecting techniques. And also during this last trip, Ken managed to hurl himself heroically down a riverbank derriere first while valiantly pursuing a plastic milk bottle used as a volleyball. This apparent disdain for etiquette and gooseberries may have been caused by the large May beetle placed (inadvertently, of course) in his pipe a few days before, or more possibly because, as trip leader, he has to put up with the rest of us....but, after all....what's a glorious leader for??

Brett Ratcliffe

NEW HALLWAY DISPLAYS

In losing half of the Pathology Laboratory (old office) because of the new fire escape, we gained wall space in the hall. This is being utilized for four new display cases. Two of the cases are used for supplemental information for the Introductory classes and one is for Extension use (currently displays all the Entomological NebGuides available). The fourth case contains a permanent display on ARTHROPODS: INSECTS AND THEIR RELATIVES. It was prepared and assembled by Brett Ratcliffe, Curator, and Martha J. Haack, Technical Artist, University of Nebraska State Museum. Common Nebraska representatives of all Insect orders and non-Insectan classes are displayed where possible. Orders in which the insects are small in size are illustrated with drawings as well as slide-mounted specimens. A section entitled "DO YOU KNOW. . .", designed to be changed periodically, currently displays some of the "oohs" and "aahs" of the insect world.

TUMBLEBUGS

The department's bowling team the Tumblebugs, has had its ups and downs over the last couple of years. It has been in contention (1974-75), in the cellar (1975-76) (despite a valiant effort to escape), to leading the league for 8 weeks (1976-77). Team members this year are: Ken Pruess (Team Captain), Roscoe Hill, Lyle Klostermeyer, Tim Miller, Jim Newton, Jan Radenslaben, and Rebecca Rasmussen. Members from previous years have been: Dave Keith, Z B Mayo, Bruce Monke, Brett Ratcliffe, Steve Koinzan, Russ Whitmore, Earle Raun, and Don Carpino.

DEPARTMENT CHAIRMEN



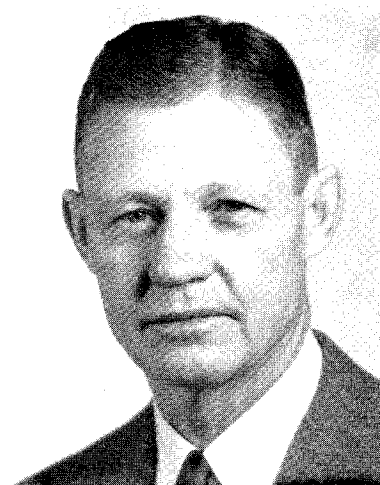
LAWRENCE BRUNER
1888 - 1919



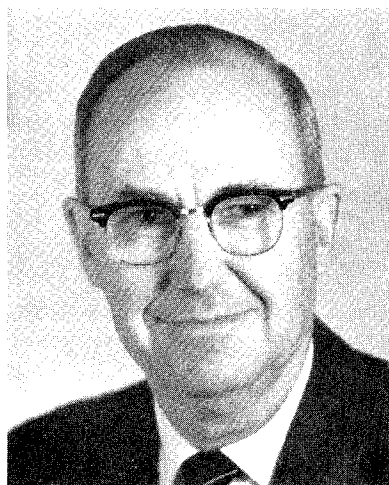
MYRON H. SWENK
1919 - 1941



H. DOUGLAS TATE
1941 - 1946



EPHRIAM HIXSON
1946 - 1950



ROSCOE E. HILL
1950 - 1966



EARLE S. RAUN
1966 - 1970

Some Nebraska Entomological History
Compiled by Roscoe Hill

Although Lawrence Bruner is considered Nebraska's premier entomologist, organized entomological work at the University of Nebraska dates from the establishment of the Nebraska Agricultural Experiment Station in 1887 when Conway McMillan was appointed entomologist. However, McMillan wrote just one bulletin and left the following year to accept the professorship of botany in the University of Minnesota. Lawrence Bruner then became entomologist of the station in April 1888 and served the state in a long and distinguished career.

According to Bruner "The entomologist was first housed or located between two museum cases in the west room of the north wing of University Hall." Later and for several years "one room served as lecture room, students' laboratory, library, research laboratory and professor's private office; it also contained the collection of insects which... had begun to assume fair proportions."

The Department of Entomology and Ornithology was established in 1895 with Bruner in charge. In 1906 ornithology was transferred to zoology and the department became the Department of Systematic and Economic Entomology. Apparently sometime before 1911 the name was shortened to Department of Entomology which remains to the present.

The following "brief" historical synopsis merely touches on some of the more economic highlights. No attempt was made to include "landmarks" from the taxonomic and other basic researches which have been made down through the years. The periods in time are arranged around the seven chairmen for convenience. Hopefully all persons holding University staff appointments or cooperative assignments have been listed. (Errors or omissions should be called to our attention).

In order to interpret the staff lists the following code is offered:

- * - resigned during that period
- ** - died in office
- *** - retired
- tr - a transfer to new status within U of N
- _____ - USDA Research associate in the department
- ===== - USDA Grasshopper Control Associate in the department.

Lawrence Bruner

(Marsland*, Barber*, Hunter*, Swenk,
Dawson, Zimmer*, Smith*, Mickel*)

1888-1919

At first the entire work in entomology was handled by one man (Bruner) with such aid he could secure from students while they pursued their entomological studies. Some of these students were given "assistant" status.

Much time was spent making collections of insects throughout the state, building up the collections, assembling a library, answering correspondence and speaking before groups of various organizations over the state.

From 1888 through 1903 a series of annual reports and bulletins were issued dealing with insects of ornamental and shade trees, small grains, corn, apples, grapes, livestock, clover, alfalfa, sugar beets and grasses. These contained much of what then was known of the life histories, habits and remedies for control of the insects which were or might become important to Nebraska's developing agriculture.

About 1906 the economic work of the department moved from the city campus to Experiment Station Hall on the Ag Campus. Soon this became headquarters for all the department.

Some insects studied: seed wheat Eleodes, parasites of white marked Tussock moth, melon aphid, squash borer, cucumber beetle, squash bug, pine tip moth, corn earworm, potato stalk borer, strawberry leaf roller, alfalfa insects, grasshoppers and wild bees.

In 1912 the Plant Industry Building was built at a cost of \$85,000.00+ \$12,500.00 for fixtures! (Over \$600,000.00 is being spent just to do the restoration job on this building made necessary because of the August, 1975 fire!!!).

Myron H. Swenk**

(Bruner***, Dawson*, Wehr*, Whelan,
Roberts, Bare, Tate, Hill)

1919-1941

This was the period just following World War I, of the Roaring Twenties, the great depression and widespread drouth of the 30's.

Hessian fly caused much damage. Fly safe dates were determined and recommended and when followed saved growers thousands of dollars.

Alfalfa weevil first found in Nebraska.

Extension program in Entomology organized.

Emergency chinch bug control program - 1,525 farmers used gallons and gallons of creosote for barriers to protect corn.

Worst grasshopper infestation since pioneer days. 78,000 Nebraska farmers used tons and tons of baits composed of dry bran, arsenicals and water.

Potato psyllid caused severe losses to western Nebraska potato crop.

H. Douglas Tate*
1941-1946

(Whelan*, Roberts*, Bare, Hill,
Graham*, Doris Gates*, Hauke, Muma)

World War II.

Physiological and toxicological laboratory studies were initiated. This constituted a policy change, for as one "outsider" described it, previously work in the department had "appeared to be taxonomy at one end and practical control at the other and nothing in between". The need for a new insectary building was first realized and plans for such were begun.

Dusts found to be as effective as sprays for control of potato insects.

Heaviest potato leafhopper infestation on record of potatoes in central and eastern Nebraska.

DDT most promising insecticide yet!

Western corn rootworms becoming more numerous and serious in central Nebraska.

European corn borer first found in the State.

State-wide mosquito survey made.

First use of airplanes in Nebraska for application of insecticides to field crops -- DDT on potatoes in western Nebraska.

Ephriam Hixson
1946-1950

(Bare, Hill, Hauke*, Muma, Sooter*,
Lomax, Staples, Bewick)

Benzene hexachloride as a dust or fog gave spectacular control of grasshoppers in western Nebraska.

Hog mange mites successfully controlled with benzene hexachloride sprays.

Sweetclover weevil reported spreading and seriously damaging over the state.

A pre-planting treatment of the soil with benzene hexachloride found very effective for control of northern and western corn rootworms.

European corn borer continues to spread over the state. In 1949 it was present in 66 counties and caused an estimated loss of \$11,400,000.00.

Entomology made a Division of the University of Nebraska State Museum in 1948. This will assure better and continuous care of the valuable insect collections.

Roscoe E. Hill

1950-1966

(Bare**, Muma*, Lomax*, Staples, Bewick*, Helm *, Ball, Hamilton*, Quate*, Roselle, Connin*, Andersen(tr), Jones, Bell, Weekman*, Pruess, Hagen, Howe*, Manglitz, Atyeo, McKnight*, Kanfack*, Burcham*, Thompson*, LaBerge*, Simpson*, Bergman*, Kishaba*, Calkins*, Jarvis*, Lawson, Medley*, Rhine, Kindler, Kadoum*, Schalk, Munson, Campbell)

Insect-virus disease relationships studied in cooperation with Plant Pathologists and with special emphasis on wheat streak mosaic.

Research on European corn borer initiated.

Soil insecticides found most effective means of controlling tuber flea beetles.

First Custom Spray Operators short course held in 1951.

Biological and ecological studies of wheat curl mite initiated.

New Insectary building completed in 1953 - greatly improved facilities for research.

USDA encouraged to place some of their research staff at the Nebraska Station - this resulted in two programs being started here - one in 1954 on sweetclover weevil research and one in 1956 on livestock insect research.

In 1954 grasshoppers were important in Nebraska. Caused \$28,000,000.00 loss.

First Survey Entomologist appointed 1955.

In 1955 spotted alfalfa aphid invaded state and work begun on its biology and ecology.

Pale western cutworm outbreak in western Nebraska - Nebraska wheat Commission provided funds for studying problem of cutworms on wheat.

Full-time entomologist station at the Scottsbluff Experiment Station in 1957.

Forage Insect Laboratory constructed on the campus by USDA for increased work on legume insects.

Department of Entomology approved in 1958 to offer Ph.D. degree with major in Entomology.

In 1959-60 - many complaints received that rootworms were not being controlled by soil chemicals - later beetles were found to have become resistant to hydrocarbon insecticides.

Face fly first found in state - soon state-wide.

Sexual form of spotted alfalfa aphid discovered widespread in state.

Corn rootworms become of greatest importance causing heavy losses and concern. Research stepped up by adding staff and effort.

In 1963 a laboratory facility and 20 acres of land at the U of N Field Laboratory near Mead were assigned to Entomology. A building there was remodeled and it and the land used primarily for corn insect research.

Western bean cutworm reported damaging corn in central areas of the state.

Earle S. Raun

1966-1970

(Hill, Staples, Ball, Roselle, Andersen(tr), Jones, Bell, Pruess, Hagen, Manglitz, Atyeo*, Lawson*, Rhine*, Kindler, Schalk, Munson, Campbell (tr), Helms, Peterson*, Keith, Ratcliffe)

Some chinch bug damage to corn and sorghum in southeast Nebraska in 1966.

Western bean cutworm increasingly damaging to corn.

Alfalfa weevil (western strain) extends range eastward.

Fall outbreak of greenbug on wheat - serious losses.

In 1968 unprecedented outbreak of greenbugs on grain and sorghum.

TV-taped Introductory Course in Entomology prepared and aired.

Renovation of space on second floor P.I. provided space for new Histopathology Research Laboratory.

Extension-research position established at North Platte Experiment Station.

Entomology research insect collections moved from P.I. to Nebraska Hall on City Campus.

E. A. Dickason

1970 - present

(Hill***, Staples, Ball, Roselle, Andersen(tr), Jones*, Bell, Pruess, Hagen, Manglitz, Kindler, Schalk*, Munson*, Campbell, Helms, Keith, Ratcliffe, Mayo, Peters, Gary, Oseto*, Pike, Witkowski; Rivers).

Eastern strain alfalfa weevil found in southeast Nebraska 1970.

The 1970 and 71 populations of European corn borer at the highest state average ever reported.

Eastern strain alfalfa weevil continued to spread and meets the western strain.

Extension-research entomologists assigned to both the South Central Station at Clay Center and the Northeast Experiment Station at Concord.

Two extension sponsored 3-year pilot pest management studies, one on corn and sorghum insects in Clay County and the other on feedlot pest problems in western Nebraska.

Some "within U of Nebraska" moves by certain staff members:

Ephriam Hixson	1950	Became Associate Director of Resident Instruction College of Agriculture, University of Nebraska
Roscoe E. Hill	1966	Resigned as chairman but remained on research and teaching staff.
Earle S. Raun	1970	Became Associate Director of Agricultural Extension Service - University of Nebraska
Lloyd Andersen	1959	Became Extension Potato Specialist - western Nebraska
	1967	Back to Lincoln as Extension Entomologist
	1971	Back to western Nebraska as Assistant Supt. Panhandle Experiment Station and Assistant Extension Director District I.
John Campbell	1970	Transferred from USDA to become extension-research entomologist at North Platte Experiment Station.

TEACHING

Since 1968, a few courses have been added to the curriculum and others have been significantly revised or deleted as you might expect. The undergraduate curriculum was modified, effective with the fall term of 1974, and we are in the midst of a revision stage again to offer students the opportunity to take a general entomology option or a pest management consultant option. You know by reading this far that we are still a normal, dangerously self-guided, Entomology faculty.

Dr. George Manglitz has been teaching a host-plant resistance course for seniors and graduate students since 1968.

Dr. Robert Staples revamped the taxonomy courses into audio-tutorial offerings. The students are pleased with this approach.

Dr. T.J. Helms became Assistant Dean of the College (one-half time = HALF ASS'T DEAN) in 1973 and is now working on a 70/30 joint appointment with the Dean's Office and the Department.

Dr. Z B Mayo has been teaching the introductory applied entomology course since the 1974 spring term when he took the course over from Dr. Helms. Dr. Mayo has a graduate teaching assistant to work with him in the laboratory portion of his course.

Dr. E.A. Dickason is teaching the insect ecology course on an alternate year basis. Students contract for their grades in the course, a process which Dick has enjoyed and his students have indicated their pleasure with the process as well.

Dr. K.P. Pruess has been teaching a very successful aquatic insects course on an annual basis since the spring term of 1974.

Earth Day, the "ecology movement", and the fact that he has a good course have contributed to a constant, high demand on Mr. Clifford Walstrom's beekeeping course. Beekeeping is offered on an annual basis now and we turn students away each spring!

Dr. H.J. Ball's insect physiology course continues to be one of the best, most up-to-date physiology courses in the region.

And, last but best, Dr. R.E. Hill's treatment of the history and literature of entomology will be remembered by many, perhaps the majority of you.

Tom Helms

DID YOU KNOW. . . The first graduate degree at the University of Nebraska was conferred in 1886 on C.G. McMillen, who majored in Geology and Entomology.

COURSES OFFERED

Number		CREDIT	OFFERED*	INSTRUCTOR
101	Insects, Man and the Environment	2	I & II	Helms
109	Beekeeping	3	II	Walstrom
201	Field Crop Insects	2	II	Mayo
202	Veterinary and Medical Insects	2		
203	Horticultural Insects	2		
204	General Entomology	2	I	Holtzer
308	Insect Pest Management	3	II 79	Pruess
312	Recognition of Adult Insects	I-3	II	Staples
401/801	Insect Physiology	3	I 77	Ball
402/802	Aquatic Insects	3	II	Pruess
404/804	Comparative Insect Anatomy/Histology	4	II 77	Helms
405/805	History & Literature of Entomology	3		
406/806	Insect Ecology	3	II 78	
408/808	Insect Control by Host Plant Resist.	2	I 78	Manglitz
411/811	Field Entomology	1	SS	Pruess
413/813	Recognition of Immature Insects	I-3	II	Staples
414/814	Current Problems in Economic Ent	2	I 79	Pruess
465/865	Insect Transmission of Plant Pathogens	2	II 77	Lane (Plant Path)
496/896	Independent Study in Entomology			Staff
899	Masters Thesis			Staff
902	Advanced Insect Physiology	3	I 78	Ball
905	Seminar in Entomology	1		Staff
906	Principles of Systematic Entomology	3		Pruess
920	Pesticide Dissipation in Soils/Plants	3	I	Lavy (Agron)
996	Research in Entomology			Staff
999	Doctoral Dissertation			Staff

*I=Fall Semester II=Spring Semester SS=Summer Session

PROJECT WASP

In 1968 a 3-year federally-funded Wide Area Spray Program (WASP) was initiated to determine the population suppression possible by adult western corn rootworm control using ULV malathion within a large area prior to oviposition. The economic feasibility and biological soundness of the treatment was evaluated by observations on initial kill, repopulation, and effect on non-target organisms. The Nebraska Game and Parks Commission and the US Fish and Wildlife Service cooperated. Personnel involved were: Earle Raun (Administrator), Ken Pruess (Project Leader), and students; Antonio Beltran, Steve Koinzan, Jim Peterson, Jasper Skinner, Dewey Urbauer, and John Witkowski. Results of the project have been reported in the following articles: Pruess, Witkowski, and Raun 1974; Koinzan and Pruess 1974; Urbauer and Pruess 1973; and Pruess 1974; and in Thesis by Beltran 1970, Witkowski 1970, Urbauer 1971, Peterson 1971, and Koinzan 1974.

IPM

In 1972 the University of Nebraska became a participant in the alfalfa subproject of the International Biological Programme (later changed to Integrated Pest Management). Funded by USDA, ARS and NSF for approximately \$30,000 per year, the three year (stretched to four) project objectives for NU were to increase levels of resistance and to combine resistances of all economically important insects and diseases in alfalfa as well as develop an integrated pest management system. Don Hanway in Agronomy and Elvis Dickason in Entomology were the principal investigators. Supporting investigators were William Kehr (Agronomy), George Manglitz (Entomology), Robert Ogden (Biochemistry), and Louis Palmer and John Watkins (Plant Pathology). Graduate students funded under this grant were John Kugler in Agronomy and Jones Mueke and Lyle Klostermeyer in Entomology. Jasper Skinner II also held a one-year post-doc under this grant.

WHITE GRUB PROJECT

In August 1973 Z B Mayo was the recipient of a \$78,000 4-year grant from EPA for participation in a multistate project entitled "Soil Arthropods Associated with Vegetables and Corn," with Nebraska being involved with corn. The objective of the total project was to study those soil insects, such as wireworms, cutworms, white grubs, etc., which have not received a lot of attention. Each state specialized in one particular pest group and cooperated with the other states in their speciality group. Nebraska's area of research was with white grubs. This included preparation of distribution maps, surveys, control methods (field and lab), and compilation of extensive bibliographies on Phyllophaga and Cyclocephala. Z B Mayo was the project leader with Chris Oseto and Keith Pike as Research Associates and now Ron Rivers as a Research Assistant. Each succeeded the preceding one as they found permanent positions elsewhere (Oseto at North Dakota State and Pike at Washington State). Lynn Hulett, Mark Fischer, and Jim Ballard also helped on an hourly basis. Publications to date are: Oseto and Mayo 1975; Pike, Rivers, Oseto, and Mayo 1976; Pike, Rivers, Ratcliffe, Oseto, and Mayo 1976; and Pike and Mayo 1976.

CLAY COUNTY PEST MANAGEMENT PROGRAM

In 1973 the Extension Service received a 3-year grant of approximately \$204,000 for a "Pilot Project for Insect Pest Management on Irrigated Corn and Dryland Grain Sorghum in Nebraska." Nebraska was one of six midwestern states working with corn and one of four working with sorghum in this federally-funded project. Among the major objectives was to put the use of insecticides on a need rather than an insurance basis and to test the feasibility of pest management on corn and sorghum in Nebraska. Field scouting was initiated in Clay County in 1973 and continued in 1974 and 1975. An average of 39,200 acres (27,500 acres of corn and 11,600 acres grain sorghum) were scouted weekly. Personnel involved in this project were David Keith (Project Director), Walt Gary (Scout Supervisor), with 13-15 scouts hired during the 2 1/2 month summer scouting period. George Woolsey, Clay County Agent, served as liaison between the program and the cooperating farmers. Graduate Students Bruce Monke, Robert Roselle, Jr. and Walt Gary in Entomology and Mike Duffy in Ag Econ evaluated various aspects of the program for their thesis. The Clay County Pest Management program was a success in terms of grower acceptability and in the development of new methods. The concept of field scouting has been accepted by Nebraska farmers in that at least 8 firms are now providing pest management consulting services, principally on irrigated corn. Several former associates are now part of some of these pest management firms: Earle Raun, with Pest Management Consultants, Inc., in Lincoln; Steve Koinzan with John P. Claassen Company, Inc., in Elgin; Steve Danielson with Agro-Serv, Inc., in Imperial; and Steve Westerholt with his own consulting firm in the Fremont area. Preliminary evaluations are given in the following publications: Gary, Keith, and Martin 1974; Keith and Gary 1974; Keith, Gary, and Martin 1975; and Woolsey 1974.

FEEDLOT PEST MANAGEMENT PROJECT

In 1976 John Campbell, North Platte Station, received word of approval for a \$134,000 grant from the Federal Extension Service for a 3-year "Pilot Project for Insect Pest Management in Nebraska Feedlots." Among the project objectives were the preservation of the environment by the decreased but more efficient use of insecticides. This reduction could occur because better management of feedlot wastes would result in less fly breeding habitats. A major goal would be to bring about a substantial cost reduction by decreasing the equipment, manpower, and insecticide cost and also increase the weight gain performance and feed efficiency of feedlot cattle as a result of decreased fly agitation. The project will be centered in Dawson county with some work in Lincoln and McPherson counties. In addition to John Campbell (Project Leader), there is a Scout Supervisor David McNeal (a PhD candidate from Purdue) and during the summer months three scouts also will be employed. A graduate student, Rebecca Rasmussen joined the project in January 1977 during research in the area of life table studies on the Stable fly.

NEW FACULTY SINCE 1968

DICKASON, Elvis A. (CHAIRMAN and PROFESSOR 1970 --) 2335 Bradfield Drive, Lincoln, NE 68502. Dr. Dickason comes to UNL from Oregon State. He received his BS and MS from Oregon State University and his PhD from Michigan State University. A member of the Oregon State faculty since 1949, his research was with forage insects (vetch bruchid, alfalfa weevil) and biological control of the pea aphid. In addition he taught undergraduate and graduate courses in Applied Entomology. In 1966-67 he was on sabbatical leave at the IRI Research Institute in Salvador, Brazil. In 1970 Dr. Dickason replaced Earle Raun as Chairman (Dr. Raun became Associate Director of Cooperative Extension). In addition to being involved in departmental programming and planning in research, teaching, and extension at UNL and out-state stations Dr. Dickason teaches the Insect Ecology course. He also served (part-time 1973-75) as Interim Director of International Programs for the Institute of Agriculture and Natural Resources at UNL. He and his wife, Helen, have two children. Daughter Marie married a Nebraskan, Bill Waddell, and they are farming near Virginia NE. Son Dan completed an MA in French at UNL and is just back from 1 1/2 years of teaching English in Brazil.

GARY, Walter J. (MS 1973; INSTRUCTOR 1973--) Rt. 1 Fairfield, NE 68938. Walt received his BA and BS from Oregon State in 1968. After a stint with the US Army in Alaska he then spent several years working for USDA APHIS PPQ at Kennedy Airport before coming to NU. His research was with Dr. Hill on a 2-county survey of Perezia in the cornborer. In 1973 Walt accepted employment as the Scout Supervisor for the Clay County Pilot Pest Management Project. His wife, Margaret, received her Masters from NU and is teaching in Hastings. Having grown up in the New York City area Walt and Marge are enjoying the wide open spaces of central Nebraska (although Walt says they do not compare with Alaska). Walt is currently evaluating the impact of the Clay County Pest Management Project for his PhD Thesis.

HOLTZER, Thomas O. (ASSISTANT PROFESSOR 1977--) 7550 Starr, Lincoln, NE 68505 Dr. Holtzer is the newest member of the staff arriving February 1, 1977. He is filling the position vacated by Dr. Hill upon his retirement. Tom comes to us from Texas A&M where he completed 2 years post-doctoral work in which he filled in for a staff member on sabbatical leave. His research at A&M was with the ecology, behavior, and management of the cotton fleahopper, Pseudatomoscelis seriatus. He did his doctoral (1975) work at North Carolina State University on modeling with Heliothis with emphasis on diapause termination and overwintering. His MS is also from NCSU (1972) in which he worked on the behavior of Thelenomus sphingis, an egg parasite of Manducta sexta. He was raised around Pittsburg, PA and received his BS from Thiel College (1969). He and his wife, Irene, have two children: Abra and the newest addition, Caleb Christman, arrived on November 5, 1976.

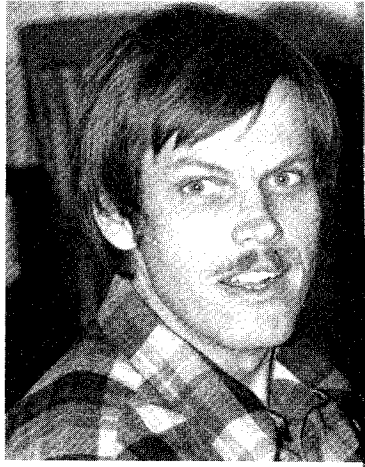
MAYO, Z B (Assistant, ASSOCIATE PROFESSOR 1972--) 1710 N. 62, Lincoln NE 68505. Z B comes to UNL from Texas where he received his BS from Texas Tech in 1967. He then went to Oklahoma State where he received his MS (1969) with his research on sorghums resistant to corn earworm and fall armyworm. For his PhD, also at OSU (1971), his research was on the biology and cytogenetics of greenbug biotypes. Z B Joined the UNL staff in 1972 with his research area the behavior and control of corn rootworms. He spends most of his time at Mead ("Mayo's Insect Clinic") but he also travels to Clay Center, North Platte, Scottsbluff and Concord in order to maintain research plots there. The only time during the summer he is seen in Lincoln is when he needs some essential supplies or late at night. During the winter he teaches the Introduction to Applied Entomology course. He and his wife have no children but Lois keeps busy teaching biology at Pius X High School in Lincoln.

McNEAL, Charles David Jr. (SCOUT SUPERVISOR 1976--) 201 S. Bare, North Platte, NE 69101. David is the Scout Supervisor for the Pilot Program in Feedlot Pest Management headquartered at North Platte. He received his BS from Arkansas and MS from Purdue and is currently a PhD candidate at Purdue. His wife Jennifer is a housewife and they have a son Robert (6).

PETERS, Leroy L. (ASSOCIATE PROFESSOR 1972--) 826 Maplewood, Hastings, NE 68901. Leroy is the District Extension Entomologist at the South Central Station at Clay Center. He handles all facets of extension entomology in south central Nebraska and does research with corn and sorghum insects. Leroy received his BS (1955) and MS (1956) from Kansas State University and his PhD (1971) from the University of Missouri-Columbia. He then joined NU in the new research-extension position at the South Central Station. "Wife - Barbara; one son, Clark - student at K-State; 1 son, Linsey, Hastings High; 1 daughter, Rebecca, Hastings Junior High."

RATCLIFFE, Brett C. (BS 1968; MS 1970; PhD 1975; ASSOCIATE CURATOR ENTOMOLOGY 1970--; ASSISTANT PROFESSOR 1976---: on leave 1976-78) INPA, Caixa Postal 478, 69.000 Manaus, Amazonas, Brazil. Brett started as a part-time curator of the Museum in 1968 and in 1970 oversaw the movement of the Collection to Nebraska Hall on City Campus and has been seen only occasionally in the Entomology Department since. Brett has been a vital part (funding) of the recent Department-Museum field trips. His taxonomic interests are with the Coleoptera, especially the Scarabaeidae, and he has collected in various parts of Central and South America for the past six summers. He evidently liked the tropics because he took a leave-of-absence to become "Curator of Insects with the Instituto Nacional de Pesquisas da Amazônia to conduct scarab research, establish an entomological systematics collection and teach." He writes that living expenses are high, their home had no screens or air conditioning and only recently had he acquired transportation. He and Linda have a son Fenn (4) and daughter Sarah (1). They accompanied him to Manaus along with their Dachshound.

NEW FACULTY SINCE 1968



Walter J. Gary



Thomas Holtzer



Z B Mayo



Leroy L. Peters



Brett C. Ratcliffe



John F. Witkowski

RIVERS, Ronnie L. (MEd 1969; RESEARCH ASSISTANT 1976--) 211 S. 29th Street, Lincoln, NE 68510. After spending 9 years teaching in New Guinea Ron decided to pursue a PhD in entomology in 1974. He assisted Z B Mayo, Chris Oseto, and Keith Pike on the EPA Soil Arthropods Project and upon the departure of Keith, Ron assumed research responsibility for that project. His thesis research deals with the biology of the white grub parasite, Tiphia berbereti Allen. He and Marlene have two children, Joel (10) and Julie (7). Ron is interested in photography, painting, fishing, hunting and maintains a New Guinea butterfly collection, especially the genera Ornithoptera and Delias.

WITKOWSKI, John F. (BS 1965; MS 1970; ASSISTANT PROFESSOR 1975--) 806 Lincoln, Wayne NE 68787. "Ski" received his PhD from Iowa State in 1975 and then joined NU in a new research-extension position at the Northeast Station at Concord. He spends half his time as District Specialist (Entomology) and the other half on research primarily with the European cornborer plus other insects of importance. He and his wife, Anne, have two children, Teresa Marie (2) and a Bicentennial baby, Sarah Ann, born July 11, 1976.

FACULTY

ANDERSEN, Lloyd W. (MS 1954; PhD 1971; Extension Entomologist, Lincoln 1955-59, 1967-71; Extension Potato Specialist, Scottsbluff, 1959-67; Assistant and ASSOCIATE PROFESSOR 1971--) 832 E. 35th Street, Scottsbluff, NE 69361. Lloyd has bounced back and forth between Lincoln and Scottsbluff and is currently wearing two hats, Associate Director of the Panhandle Station and Associate Director of Extension District I. Lloyd has apparently found his niche and finds administration "interesting and challenging." He says he still dabbles in Entomology. Lloyd and Helen have three children: twins Craig and Gail (18) and Tim (16). Lloyd can be found any Friday night wherever Scottsbluff High School is playing as he and Helen follow and watch Tim play football.

BALL, Harold J. (Assistant, Associate and PROFESSOR 1951--) 7220 Aylesworth Avenue, Lincoln, NE 68505. Hal has been on the staff at NU since 1951 and has helped smooth the way for several students in that time. He has had 5 PhD and 2 MS students since 1968 and is currently working with 1 PhD and 1 MS student. He is continuing studies of resistance of Diabrotica virgifera to various insecticides and is conducting general research in the area of photosensitivity of insects, especially as related to circadian rhythms in cockroaches. He teaches the introductory and advanced Insect Physiology courses. When time permits in the summer, Hal, his wife Ellen and daughter Pam (10), vacation at a cabin they built in Wisconsin and sail in a 16-ft. "Snipe" sailboat they built last winter. Hal also continues to pursue his interest in photography.

BELL, Jerold H.L. (Research Associate, ASSISTANT PROFESSOR 1956--) 1809 N. 60th, Lincoln, NE 68505. Jerry serves as District Director of USDA APHIS PPQ. As such he is in charge of all PPQ activities in Kansas and Nebraska. He states, "Still doing business at the same stand, but at a new location." (Jerry was accused of some ESP as he and his staff moved out of their office in Plant Industry Building the day preceding the PI fire. He is now officed in the New Federal Building in downtown Lincoln. -ed)

CAMPBELL, John B. (Entomologist USDA 1966-70; Assistant and ASSOCIATE PROFESSOR 1966--) 2015 Beverly Blvd., North Platte, NE 69101. Jack was with the USDA Livestock Insects Laboratory at Lincoln before joining NU in the new Veterinary Entomology position at North Platte in 1970. He is also District II Extension Entomology Specialist. His research is with cattle lice and grubs, stable flies, horn flies, and face flies. He just received a grant for a Pest Management Program in Feedlots. He and Jane have "4 children: John (18), a college (NU) freshman; Mike (16), a high school sophomore; Jean (11), 4th grade; and Cathy (7), 1st grade."

HAGEN, Arthur F. (ASSISTANT PROFESSOR 1957--) 3009 Avenue G, Scottsbluff, NE 69361. Art is the District Extension Entomologist stationed at the Panhandle Station. His research concerns the biology and control of insects of western Nebraska with current emphasis on Labops, western bean cutworm, and grasshoppers. "Married with 4 children, 2 of which have graduated from high school and a 3rd one will graduate the spring of 1977. Wife Marlene teaching school and maintaining the Hagen household."

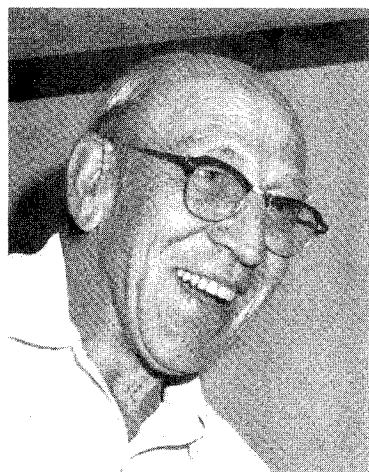
FACULTY



Lloyd W. Andersen



Harold J. Ball



Jerold H.L. Bell



John B. Campbell



Arthur Hagen

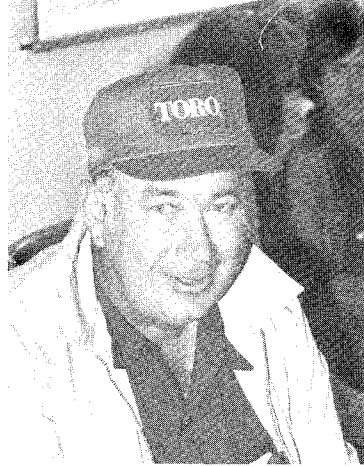


Thomas J. Helms

FACULTY



David L. Keith



Dean Kindler



George R. Manglitz



Kenneth P. Pruess



Robert E. Roselle



Robert Staples

HELMS, Thomas J. (Assistant, ASSOCIATE PROFESSOR 1967--; ASSISTANT DEAN 1973--) 3859 Dudley Street, Lincoln, NE 68503. Besides teaching in the Entomology Department Tom is also serving 70% of his time as Assistant Dean of the College of Agriculture. As such he coordinates the Ag College program in undergraduate advising and student counseling, and also helps students cut the "Red Tape." He teaches General Entomology every fall and Comparative Anatomy and Histology in the spring of alternate years as well as a General Ag Orientation course for freshman each fall. "Recently remarried. Wife's name is Carole Kay Reno" and Tom states, "we've had some difficulties with the fact she didn't take the Helms name, but they are interesting and fun!" Carole is Director of Alumni Relations for the UNL Alumni Association and a Nebraskan from Alliance. I'm still gardening, doing a bit of woodworking, some carving, and refurbishing Goodwill vintage 'antiques'. Sons Tim (17) and John (9), and daughter Jean (11), are growing too fast to keep up with them."

HILL, Roscoe E. (BS 1934; MS 1936; Assistant, Associate, and Professor 1940-76; Chairman 1950-66; PROFESSOR EMERITUS 1976--) 848 Carlos Drive, Lincoln, NE 68505. Dr. Hill retired effective July 1, 1976 after 36 1/2 years as a staff member and 44 1/2 years since first enrolling in NU as a student in entomology. Over the years Dr. Hill has worked with the taxonomy of Coelioxys, control of tube flea beetles and other potato insects, control of grasshoppers, ecology and host relations of flea beetles and insecticidal control of corn rootworms. Recently he has been mostly concerned with the biology and ecology of insects affecting corn, especially with corn rootworms and the European corn borer. Dr. Hill is "continuing to pursue my interest in the History of Nebraska Entomology. Am presently NC Branch-ESA Archivist and Historian (as well as) President of the Kansas Entomological Society. (He will preside at the annual meeting to be held in Lincoln April 23, 1977-ed) Wife Norene (Johnston) Hill (once the Department Secretary). Four sons all married and eight grandchildren."

KEITH, David L. (PhD 1971; EXTENSION ENTOMOLOGIST 1967--; Assistant, ASSOCIATE PROFESSOR 1971--) 3247 So. 40th, Lincoln, NE 68506. Dave does general work in extension entomology with emphasis on corn and sorghum pest management. He is director of the Clay County Pest Management Project. Dave and Brenda have "4 children: all daughters, Becky (15), Jennifer (11), Melissa (7), and Rachel (5). Wife also talked me into a female dog--Maggie, collie, age 2, unspayed, has potential." Under further information Dave says, "Nothing especially exciting, I guess. Just that Brenda, the kids and I are happy and healthy and enjoying our lives together in Lincoln. Come to think of it, that's pretty exciting." (With a house full of women it should be at least interesting, Dave. - ed)

KINDLER, S. Dean (PhD 1968, RESEARCH ENTOMOLOGIST USDA 1964--; Instructor, Assistant, ASSOCIATE PROFESSOR 1964--) 1511 Valley View Drive, Lincoln, NE 68505. Dean works at the Forage Insect Laboratory with major interest in host plant resistance of grain sorghum and grasses to insects (currently greenbugs and bluegrass billbug). Dean's family consists of wife, Beverly, step-son John Knape, a Senior at Northeast High and son Paul Kindler who is a sophomore at the University of Wisconsin majoring in Horticulture.

MANGLITZ, George R. (PhD 1962; RESEARCH ENTOMOLOGIST USDA 1958--: Research Associate, Instructor, Assistant, Associate, PROFESSOR-- (1958). 6715 Bethany Park Drive, Lincoln, NE 68505. George heads the USDA Forage Insect Laboratory and his "research has moved slowly away from sweetclover insects, including red clover insects for a brief time, and now is almost exclusively alfalfa insects. The alfalfa weevil presently occupies most of my research attention. My family is starting to grow smaller with the marriage of daughter Ruth in March 1975 and son Harry a freshman at Wayne State. The younger three (Paul 15, Mary 13, and Joel 10) will be with us awhile yet. Camping continues as one of our main family interests." This fall George taught his Insect Control by Host Plant Resistance course to an overflow class and is supervising one PhD student. (He keeps wondering when the student will finish up with his "second" thesis - this Newsletter.---ed).

PRUESS, Kenneth P. (Assistant, Associate and PROFESSOR 1957--)
1441 Urbana Lane, Lincoln, NE 68505. Even though Ken has been stationed in Lincoln since 1965 he still makes biweekly summer trips back to North Platte where he started with NU. His research currently deals with range and pasture insects with emphasis on leafhoppers in irrigated pastures. He teaches an Aquatic Entomology and two Economic Entomology classes. Ken can be seen bent over the Department's newly acquired computer terminal as he has fun writing programs for research and teaching. He is also giving a non-credit orientation seminar on programming to interested staff and students. Ken captains the famous Tumblebugs bowling team and still fishes and collects State tax stamps. He and Neva have a son Cameron and a daughter Carleen.

ROSELLE, Robert E. (EXTENSION ENTOMOLOGIST, PROFESSOR 1952--)
701 Eastridge, Lincoln, NE 68510. Bob continues to head the extension entomology program for NU and to keep one step ahead of EPA. Bob has been awarded the Superior Service Award by USDA, the Directors Award by the Midwest Chemical Association (1974), and in November 1976 received the Award of Merit from the UNL chapter of Gamma Sigma Delta. He and his wife, Peggy have three sons: Robert Jr. (an entomology graduate student at UNL), Brian, and Kevin. Peggy took a Steamer to South Africa this spring to visit her sister in Rhodesia. On the questionnaire under further information Bob put "not printable."

STAPLES, Robert (Assistant, Associate, and PROFESSOR 1950--)
1040 N. 65th Street, Lincoln, NE 68505. Bob is still working "with various details of the epidemiology of wheat streak mosaic and is also trying to cope with greenbugs. On the teaching side: trying to devise a more sensible and simpler method of teaching insect taxonomy (auto-tutorial-ed). All the kids are married. One grandson: Zachary D. Metcalf. I call him 'Bruno' because he reminds me of one." In June Bob was recognized by the Nebraska Grain Improvement Association for his research on wheat streak mosaic.

WALSTROM, Clifford J. (BS 1949; PART-TIME INSTRUCTOR 1959--) Rt. 2 Ceresco, NE 68017. Cliff teaches the very popular Beekeeping course during spring semester and is also the owner-operator, along with his son, of his commercial apiary. He is doing some experimental work in pollination and bee disease control as well as running a herd of 50 registered Angus. Cliff "left the position of State Entomologist after 23 years in 1972. Now enjoying a more leisurely life at home instead of running all over the state. Celebrated 25th wedding anniversary in 1975. Son Douglas J. married in October 1975."

CURRENT RESEARCH PROJECTS

Photosensitivity in Insects	Ball
Pest Management of the Greenbug and other Arthropods in Sorghum and Small Grains	Staples
Genetics and Ecology of the European Corn Borer	Witkowski
Range and Pasture Insects	Pruess
Injurious Insects Affecting Forage Legumes and Forage and Turf Grasses	Manglitz & Kindler
Insects Affecting Corn in Nebraska	Mayo, Ball & Holtzer
Injurious Insects Affecting Livestock in Nebraska	Campbell
Biology and Control of Crop Insects in South Central Nebraska	Peters
Biology and Control of Insects Injurious to Crops in Northeastern Nebraska	Witkowski
Biology and Control of Insects Pests of Western Nebraska	Hagen

SUPPORT PERSONNEL

BASEL, Frank H. (RESEARCH TECHNICIAN 1965--) Box 66, Ithaca, NE 68033. Frank is the research technician at the Mead Laboratory where he maintains the field lab facilities and prepares fields for planting of experimental plots. Frank and Tillie are home alone, as their children are all married and on their own.

BOXLER, David J. (RESEARCH TECHNICIAN 1975--) Rt. 4, North Platte, NE 69101. David is the research technician at North Platte assisting Jack Campbell with his work on livestock pests. He began a Master's program in Entomology this fall and will spend one semester a year at Lincoln in order to complete his degree. He is single.

BROWN, James F. (LABORATORY RESEARCH TECHNICIAN 1975--) 5000 Judson Street, Lincoln, NE 68504. After receiving a 2-year degree in Horticulture from the University of Nebraska School of Technician Agriculture at Curtis in May 1975, Jim now travels the state with Z B Mayo during the summer working on the corn rootworm project. He is single.

BRUCE, Terry C. (RESEARCH TECHNICIAN 1975--) 4236 Huntington, Lincoln, NE 68503. Terry has been the Sorghum Research Technician for about a year. Prior to that he worked part-time also for Dean Kindler. He conducts sorghum screening tests during the fall and winter. In the spring and summer he works on billbug studies and greenbug-sorghum field tests. Terry is also an undergraduate student in entomology. Single, Terry enjoys racing motorcycles.

DUKES, Terry (LABORATORY MECHANIC 1963--) 7129 Francis, Lincoln, NE 68507. Terry is a jack-of-all-trades around the department. In the Insectary Shop he maintains the departmental research equipment and designs and builds specialized equipment to aid the research of staff and students in the department. He and Kathleen have three daughters.

FUHRER, Marcia (SECRETARY 1975--) 3141 P Street, Lincoln, NE 68503. Marcia is a secretary in the departmental office doing general typing and answering the phone. In her "off hours" she works at K-Mart.

HUNT, Linda Lee (TECHNICIAN 1975--) 1226 5th Avenue, Scottsbluff, NE 69361. Linda is currently the General Entomology Technician at the Panhandle Station. She helps Art Hagen in rearing Western Bean Cutworms and by whipping the library into shape. She has one son, Robbie (3).

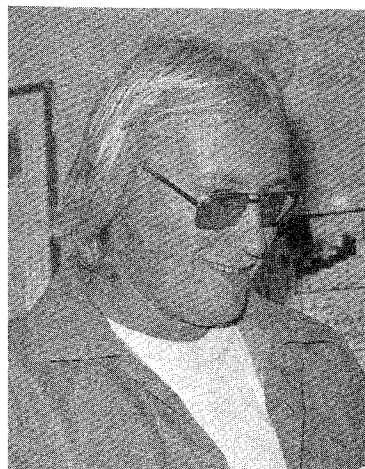
JEFFREY, Nina I. (SECRETARY 1960--) 2920 P Street, #1, Lincoln, NE 68503. Nina is the secretary at the Forage Insect Laboratory, USDA. "My Kitty keeps house when I'm not at home which is most of the time."
(Nina retired because of disability Feb. 4, 1977--ed)

MOATS, Rosemarie "Rosie" (SECRETARY 1976--) 2817 S. 14th Street, Lincoln NE 68502. Rosie is a permanent half-time clerk-typist at the Insectary. Previously she was with the Ag Finance & Personnel Office from December 1968 to September 1975. Rosie's husband, Gene, has worked for Lancaster County for 16 years. They have one son, Jay D. (10).

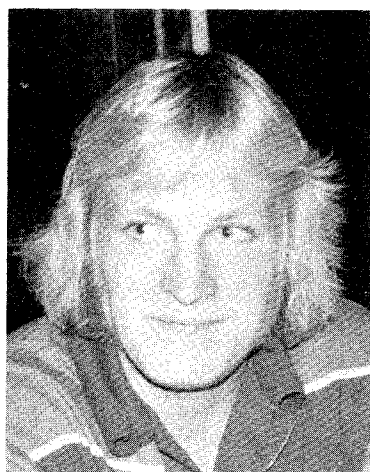
SUPPORT PERSONNEL



Frank J. Basel



James F. Brown



Terry Bruce



Terry Dukes



Marcia Fuhrer



Nina Jeffrey

SUPPORT PERSONNEL



Timothy P. Miller



Rosemarie Moats



Connie Policky



Jan Radenslaben



Henry Stevens



Paulina Su

POLICKY, Connie J. (SECRETARY 1975--) 3203 Orchard, Lincoln, NE 68503. Connie is the Extension secretary, and tries to keep track of where the Extension people are. Connie and Bud were married in 1975 and are the proud parents of a daughter, Amy Jo.

RADENSLABEN, Jan (SECRETARY 1972--) 3503 Apple, Lincoln, NE 68503. Jan has been involved in secretarial work on East Campus since 1970 having worked for Ag Engineering and as Extension Entomology Secretary before taking over the DEPARTMENTAL SECRETARY position upon the retirement of Sally Schock. She is active in the University of Nebraska Office Personnel Association having served as its President in 1975-76. In addition she enjoys volleyball, tennis, and is currently a member of the Tumblebugs bowling team. She is also researching her "family tree and discovering more branches than I bargained for." She is single.
(Jan became secretary to the Extension Director 7 Feb. 77 --ed)

STEVENS, Henry Jr. (AGRICULTURAL RESEARCH TECHNICIAN USDA 1958--) 5118 Dudley Street, Lincoln, NE 68504. Henry assists George Manglitz at the Forage Insect Laboratory in alfalfa insect research. He also sees that the lab and equipment are clean and in working order. In the evenings and on weekends Henry, with the assistance of his sons, runs a hauling service. He and Leona have five children: one daughter and four sons.

SU, Paulina Po-Lun (MS 1976, LABORATORY TECHNICIAN 1976--) 4300 Holdrege, A-101, Lincoln, NE 68503. Paulina was awarded her BS in Taiwan in 1972 and did her Master's under the supervision of Dr. Helms on the life cycle of the Microsporida, Nosema, in the western bean cutworm. In May 1975 she married Albert Lew (a student she knew in Taiwan and is now a graduate student under Dr. Ball). Paulina is now Laboratory Technician for Dr. Ball and helps with the corn rootworm insecticide bioassay's in the summer and cockroach circadian rhythm studies in the winter.

MILLER, Timothy P. (BS 1974, EXTENSION TECHNICIAN 1975--). 2200 West Q Street Apartment 6, Lincoln, NE 68528. Tim has been the Extension Technician since February 1975. He "conducts insect surveys, maintains the photographic slide files and insect collections, makes presentations to various 4-H and agribusiness groups in addition to doing insect identifications for public and private concerns and individuals." He is also working on his Master's research on wheat streak mosaic on oats with Dr. Staples as his advisor. Tim states, that he is "possibly the worst bowler in the department but possibly the dart and ping pong champion." He and Diana have a son Christopher (3) and a daughter Michelle (1 1/2).

BUELL, Mary (SECRETARY 1977--) 4915 Colfax Ave., Lincoln, NE 68504. Mary joins the department March 7, 1977 as the DEPARTMENTAL SECRETARY. She comes to us from the State Department of Revenue where she was in a Steno Pool. Her husband, Terry, works for the Lincoln Regional Center in security. They have two sons: Daniel (6) and Aaron (9). A sports minded family they fish, camp, and enjoy anything outdoors. She also bowls and plays volleyball in addition to her craft projects.

GRADUATE STUDENTS

BALLARD, James B. (Graduate Student 1976--) 2600 South 60th Apt. 22, Lincoln, NE 68506. Jim comes to us from Massachusetts via the US Air Force. Jim started his masters program in January 1976 with Dr. Pruess as his advisor. Jim's main interest is the biology of Formicidae and his thesis research deals with ants in irrigated corn fields. He and Mary have a son, Jeremy, born May 1975.

BREWER, Gary (BS 1974, Zoology; Graduate Student 1976--) 217 N. 25th, Lincoln, NE 68503. Gary joined the Department in September with Dr. Ball as his advisor. "My thesis concerns the effects of various plants purported to possess repellent factors on the feeding and ovipositional behavior of the imported cabbageworm, Pieris rapae L. Single, no change in the planning forseen."

CARPINO, Donald P. (Graduate Student 1975--) 4377 Selleck Quadrangle, Lincoln, NE 68588. Don is from Massachusetts and is working under the supervision of Z B Mayo on a survey of parasites of the European corn borer. Don received his BS in entomology from the University of Mass. in 1975. Don is single and one of his recent pursuits was his pilot's license.

KLOSTERMEYER, Lyle E. (Graduate Student 1973--; Teaching Assistant 1975-76) 1156 Idylwild Drive, Lincoln, NE 68503. Lyle is nearing completion of his doctoral research which is concerned with cross-mating studies with the eastern and western strains of the alfalfa weevil and the possible causes of sterility in certain of the crosses. During 1976-76 he was the departmental Teaching Assistant, teaching the three lab sections of Entomology 201 each semester. He received his BS from Washington State University and his MS from North Dakota State University. "Still single despite gentle hints that this marital status should change along with my education. I hope to add the PhD to the list of degrees in Entomology received by the Klostermeyer's from the University of Nebraska." (His father is Edward C. Klostermeyer)

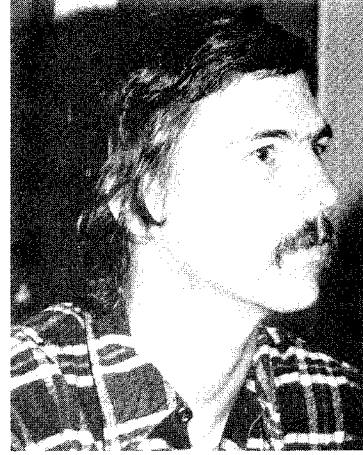
LAMP, William (BS 1972, Zoology; Graduate Student 1977--) 2955 Wendover, Lincoln, NE 68502. A native Nebraskan from Omaha, Bill just finished his MS (1976) at Ohio State University with his research on resource partitioning by two species of Mayflies. He arrived on campus for the start of spring semester 1977 and will be doing his work with Dr. Pruess, probably on modeling. His wife's name is Jo.

LEW, Albert C. (Graduate Student 1975--) 4300 Holdrege, Apt. A-101, Lincoln, NE 68503. Albert is doing his PhD under the supervision of Harold Ball on some of the sensory receptors in the western corn rootworm. Albert received his BS in Plant Pathology and Entomology from National Taiwan University, and his MS in Technology of Crop Protection from the University of Reading, United Kingdom. In May 1975 Albert married Paulina Su, another graduate student in the department.

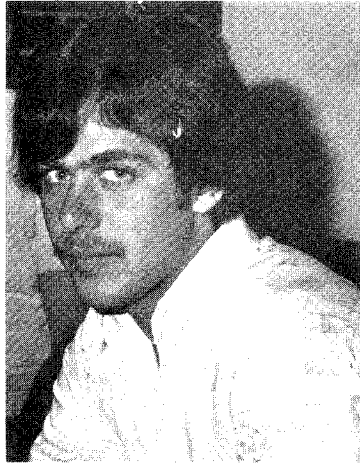
GRADUATE STUDENTS



James Ballard



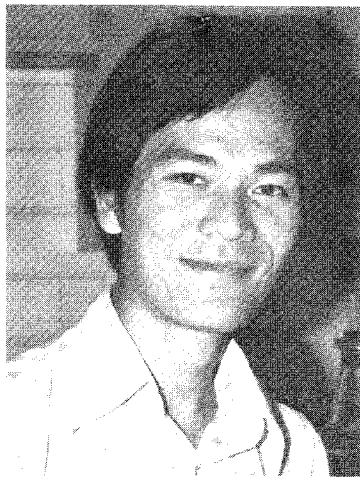
Gary Brewer



Don Carpino



Lyle E. Klostermeyer



Albert Lew

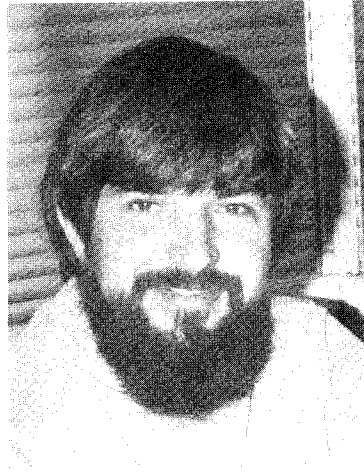


Bruce Monke

GRADUATE STUDENTS



Jones Mueke



James P. Newton



Rebecca Rasmussen



Robert M. Roselle



Jack Shugart



Ronnie Rivers

MONKE, Bruce J. (MS 1976; Graduate Student 1974--; Teaching Assistant 1976-77) 4145 Lenox, Lincoln, NE 68510. Bruce received a BA from Gustavus Adolphus in 1972. He has completed his MS which was an evaluation of recommendations for control of greenbugs on sorghum in the Nebraska Pilot Pest Management Project under the supervision of Dr. Keith. This past summer he was a technical advisor for a production crew with Earle Raun and the University of Mid-America, producing a series of TV programs for training of private pesticide applicators for certification. This year Bruce has the position of Teaching Assistant under Z B Mayo. He will be doing his PhD work under the supervision of Ken Pruess. His wife Becky is the Registrar at the Nebraska State Museum.

MUEKE, Jones M. (Graduate Student 1973-76; PhD 1976) Department of Entomology, University of Nairobi, P.O. Box 30197, Nairobi, Kenya. Jones received his BS and MS from Northern Michigan State and has also taught Swahili to Peace Corps Trainees in Michigan. Jones did his research under the supervision of G.R. Manglitz on the control of alfalfa insects using resistant varieties and insecticides. Jones returned to Kenya in November where he rejoined his family, wife Bratta and two sons who had preceded him home this past summer. We just recently received word that Jones has a position at the University of Nairobi.

NEWTON, James P. (Graduate Student 1976--) 2861 Washington, Lincoln, NE 68502. Jim joined the department this fall and will be working on his MS under the supervision of Z B Mayo evaluating the placement of eggs by the corn rootworm females in relation to types of irrigation. He received his BS in Biology from Wayne State in December 1975. He is single.

RASMUSSEN, Rebecca L. (BS 1976; Graduate Student 1977--) 1201 S. 22nd Apt. 1, Lincoln, NE 68502. Rebecca just finished her BS last fall. She will be doing her Master's under the supervision of Dr. Campbell at North Platte. Her research will be a study of the stable fly life history. Single, she states "have been known to eat male chauvanists for breakfast." (Male chauvanists are as bad as feminists, almost. --editorial committee)

ROSELLE, Robert M. Jr. (BS 1974, Business Administration; Graduate Student 1974--) 701 Eastridge Drive, Lincoln, NE 68510. After working two summers as a scout in the Pilot Pest Management Program, Robert joined the Department as a graduate student in the fall of 1974. His advisor is Dr. Keith and his research is an evaluation of corn rootworm prediction methods based on number of adult beetles per plant the preceeding August. Robert is the eldest son of our Extension Entomologist.

SHUGART, Jack I. (Graduate Student 1976--) 324 South 18th, Lincoln, NE 68508. Jack comes to us from Wyoming where he received his BS (1973) and MS (1975) from the University of Wyoming. He is doing his PhD under the supervision of Jack Campbell and spends his summers in North Platte doing research on face flies. His wife, Dee, is an Instructor in the Educational Psychology and Measurements Department at NU. They have a son, Todd (5).

UNDERGRADUATE STUDENTS

BUSKE, Marco (Senior) 217 No. 25th, Lincoln, NE 68503. Marco has an interest in the chemical aspects of entomology. Single, he is from Lisco, NE.

CHURCHILL, Richard (Junior) 3416 N. 65th, Lincoln, NE 68507. Dick works for an irrigation consulting firm in Lincoln. He is married with 2 children.

FISCHER, Mark H. (Senior) 501 W. Saunders, Apt. #4, Lincoln, NE 68521. Last year Mark helped Keith Pike and Ron Rivers compile the bibliographies on Phyllophaga and Cyclocephala and assisted in the lab work. This past summer Mark went on the field trip and was the star of the volleyball games as well as a proficient collector of Lepidoptera. Mark and Lisa are from Valentine.

GRAMKE, James D. (BS 1976) 710 Garfield, Lincoln, NE 68502. Jim graduated in December and is now job hunting. He has been involved with his father in Gramke Aerial Spraying in Tekamah, NE. Jim was a helicopter pilot in Vietnam. Jim and his wife, Kim, have a daughter, Maria, and a son, Adam.

HAMILTON, Gary (Junior) 410 Abel Hall, Lincoln, NE 68508. Gary has a dual major of Horticulture and Entomology. Gary is single and from Dorchester, NE 68343.

NIELSEN, Kim (Junior) 4919 Huntington, Lincoln, NE 68504. Kim worked part-time for Art Hagen (1971-73) and from August 1973-August 1976 was his full-time technician at the Panhandle Station in Scottsbluff. He is now working part-time with Dr. Kindler and Dr. Staples on the greenbug resistance screening in sorghum. He is single and from Bridgeport, NE

RONNENKAMP, Robert J. (BS 1976) 220 S. 18th, Lincoln, NE 68503. Bob graduated in December and is currently looking for a job. While going to school he worked part-time at the Forage Insect Laboratory and during the summer of 1975 was a scout for Earle Raun's Pest Management Consultant's, Inc.

SCHINDLER, Ricky (Senior) 4645 Dudley, Apt. 18, Lincoln, NE 68503. Ricky worked with Steve Koinzan in pest management and water management in northeast Nebraska last summer. Ricky expects to graduate in May with a general ag degree. His hometown is Clearwater, NE and he likes to hunt, fish, and race motorcycles. He took up flying last summer (no doubt influenced by Steve--ed). He is single.

SPOMER, Steve (Senior-Life Sciences) 1235 No. 50th, Lincoln, NE 68504. Steve is in the Entomology option of the Life Sciences curriculum. He was one of the participants in the Field trip last summer where he was an excellent volleyball player and collector of Lepidoptera. He has a large collection of Lepidoptera and last summer reared the Black Swallowtail as part of a special project. Another hobby is looking for old coins, etc., with a metal Detector. He is married.

VOLKMER, Doug (Senior) 1023 Schramm Hall, Lincoln, NE 68588. Doug has worked for a hybrid seed company and is interested in pest management.

WILMES, John "Mike" (Junior) 3601 Apple, Lincoln, NE 68503. Mike is from Nebraska City and is a member of Farmhouse Fraternity. His interest is in Pest Management and Pest Control. He is single.

WOOLSEY, George Jr. (Junior) 132 Burr Hall, 35th & Holdrege, Lincoln, NE 68583. George was one of the scouts for the Clay County Pest Management project. He is single and his hometown is Inland, NE. His father is Clay County Agent.

WANTED

JOB OPPORTUNITIES FOR NU GRADS

Please send job announcements and/or vacancies to:

Dr. E. A. Dickason, Chairman
Department of Entomology
University of Nebraska
Lincoln, NE 68583

Phone: 402-472-2123

ALUMNI

IN THIS SECTION INFORMATION IS CURRENT AS OF RECEIPT OF THE QUESTIONNAIRES IN SPRING/SUMMER 1976. SUMMARIES HAVE BEEN UPDATED ONLY WHEN ADDITIONAL INFORMATION WAS MADE KNOWN TO THE EDITOR.

AABY, Mary Jane. (Secretary 1975) 1409 S. 5th Bozeman, Montana. 59715. Mary Jane worked as a secretary in the departmental office for 10 months before trading the hassle of typing, etc. for the trials of teaching kindergarten in the Lincoln Public Schools. (We wonder if that is any more traumatic than the PI fire - as Mary Jane left 2 weeks after we moved back into PI Building. -ed) Her husband, Nils-Erik, finished his Doctorate in Business Administration and is now on staff at Montana State University. Mary Jane and Nils-Erik will probably be found on the ski slopes of Montana in their spare time.

ANDERSEN, William F. (MS 1962, Zoology & Physiology; PhD 1970, Zoology) 2417 Elephant Trail, St. Joseph, MO 64506. William is currently an Associate Professor of Biology at Missouri Western State College. In addition to teaching 4 courses (Concepts of Biology, Animal Physiology, Cellular Biology, Basic Nutrition) he advises Pre-med and Pre-dent students. He and his wife, Alice, have four children; Christine (13), Tom (11), Theresa (9), and Kathy (6).

BALDERSTON, Buele Gene, CPT USN (Retired) (BS 1952, Agriculture) 1436 SE53rd Ave., Portland OR 97215. Retired from the Navy after 21 1/2 years in the submarine branch (Commanding Officer of two nuclear attack submarines) Buele is now a student at Western Conservative Baptist Seminary studying for the Master of Divinity degree. Of his "four children; Karen, a recent graduate from the Univ. of Hawaii, Scott a senior at the University of Virginia who has been accepted for Medical School there in September; and two other children, Leslie Ann and Keith, who live at home, are in the 10th and 4th grades. The small, extant insect collection of mine has travelled the world and has been in numerous science projects as well as class-room show and tell."

BANKS, Kenneth S. (BS 1972, Agriculture) Rt. 2 Box 262-A, Kearney, NE 68847. Still single, Ken performs regulatory work with the Nebraska Dept. of Agriculture and the USDA, APHIS, Plant Protection and Quarantine programs.

BARE, Aline (Secretary 1954-67) 656 Mt. Vernon, Oshkosh, WI 54901. "Have enjoyed living in Wisconsin near my daughter and her family since September 1969, but am always ready to return to Nebraska when the opportunity arises to visit my son's family and other relatives and friends. (I) am still typing an occasional article or term paper to keep in practice."

BEARDMORE, Bruce W. (MS 1975) 508 Eisenhower Drive, Stoughton, WI 58589. Bruce completed his MS under the direction of Z B Mayo. He is now a Field Biologist with FMC Corporation where he is obtaining efficacy, phytotoxicity and residue data for registration of company products through EPA by way of University cooperators and private contractors. Cindy is Burce's wife.

BELAND, Gary L. (MS 1968; Instructor 1969-72; PhD 1972). 121 Lysbeth Dr., Leland, MS 38756. Gary is working on "host plant resistance studies with soybean insects. Attempting to incorporate multiple insect resistance into soybean varieties with emphasis on Heliothis spp. Soybean looper and Mexican bean beetle as a Research Entomologist at the Bioenvironmental Insect Control Laboratory, USDA, ARS, Stoneville, MS. Married - 18 month old son - Jason Christopher complete with southern accent."

BELTRAN, Antonio. (MS 1970; PhD 1972) Apartado 3908, San Jose, Costa Rica, C.A. Tony is field representative (Central America) for Rohm and Haas in the research and development of agricultural chemicals.

BERBERET, Richard C. (PhD 1971). 1308 N. Benjamin, Stillwater OK 74074. An Associate Professor at Oklahoma State University he teaches "Introductory Entomology and Principles of Economic Entomology and researches the life systems and control of insect pests of legumes in Oklahoma with emphasis on the alfalfa weevil, lesser cornstalk borer (in peanuts)". He and Patricia have two daughters Erin Colleen (3 1/2) and Shannon Jean (1 1/2).

BERGMAN, Paul W. (Extension Entomology 1960-65). 6427 Noble Drive, McLean, VA 22101. Paul is now Entomologist the the USDA Extension Service "in liaison work with land grant universities, State Cooperative Extension Service, Federal agencies, other state agencies and private sector in total - also liaison with international work." His wife, Beverly has her own secretarial service in addition to being a homemaker. Their daughter Brenda attends UNL and sons Casey and Ryan are at home. "Entomology as a profession is being strengthened with the emphasis in the area of self-employment. All supporting factions should work towards this effort."

BEROGAN, Terry L. (BS 1971, Soil Conservation; Extension Technician 1970-72). 302 W. 1st Street, Bottineau, North Dakota 58318. Terry is a soil scientist with the USDA, SCS working on the determination of various soils on the landscape and map the soils in these areas. He and his wife, Linda, and 4 children (Jennifer, Mathew, Janell, and Benjamin) are doing very well. They have just built a new house in Bottineau.

BRANDHORST, Carl T. (PhD 1961) 55 Pearl, Seward NE 68434. He retired in 1972 as Professor of Biology at Concordia Teachers College, Seward. He is currently working on gall insects and traveling in Europe, Hawaii, and the US. His two sons have received Doctorates from UNL. "We now have 30 earned degrees in our immediate family."

BRUNKEN, Edwin L. (BA 1950) 17200 14th Avenue North, Plymouth MN 55391. He is manager of Product Safety Systems, Grocery Products Division, The Pillsbury Company. His duties are to institute, monitor, and revise product safety controls to assure consumer protection and regulatory compliance. He and wife Lucille have a 17 year old son, Jeffrey.

BURKHOLDER, Wendell E. (MS 1956) 1726 Chadbourne Drive, Madison, WI 53705. Wendell is Head of the USDA Stored Product Insects Laboratory and also a Professor in the Entomology Department at the University of Wisconsin. He received his PhD from UW nearly 10 years ago. His research is concerned with the basic biology and behavior of stored product insects and development of new methods of control. "I would very much like to receive samples of diseased stored-product insects. If anyone has some, please let me know and I will send a mailing permit." The older children, Paul and Anne, are both at the University in Madison. Joseph and Stephen are in secondary school. "A recent hobby of mine involves the restoration of a very old Norwegian log cabin near Madison."

CALKINS, Carrol O. (MS 1964, Instructor 1961-64) Insect Attractants Laboratory, Gainesville, FL 32604. Carrol is a Research Entomologist with the USDA working on the "ecology of insect populations; insect behavior; and manipulation of behavior with physical and chemical stimulants, attractants, repellants, etc." He received his PhD in 1974 from South Dakota State University. He and his wife, Janice, have two daughters; Debra (13) and Lori (9).

CARLSON, Stanley D. (MS 1958). 414 Shepard Terr., Madison, WI 53705. Stanley is an Associate Professor at the University of Wisconsin working on the insect visual system using TEM, SEM, HVEM, and microspectrophotometer. He has completed a NIH Special Fellowship in Sweden and Yale University and was also at the University of Illinois before moving to Wisconsin in 1971. His wife, Agneta, "is working on her second masters degree--now in Counseling and Guidance. So far she hasn't charged for any of the advice she's given me." They have 4 sons; Eric, Kirk, Jon, and Anders.

CARTER, Cheryl L. (Kalnins). (Secretary 1969-1976). 2126 Ryons, Lincoln, NE 68502. Cheryl's 7 1/2 years as part-time secretary at the Insectary ended when, with an addition to the family, she became a full-time housewife. TeeJay, born June 13, 1976, joins a sister (8) who is now in the third grade. Cheryl remarried in January 1974 and her husband, Bobbie is a foreman at Hy-Gain Electronics. Cheryl keeps active as a Blue Bird Leader and with all her little craft projects.

CORNELIUS, Michael L. (BS 1970, Agriculture). 5115 So. 81st Street, Ralston, NE 68127. Mike is Command Entomologist with the US Air Force. He visits the 28 Strategic Air Command bases providing entomological consultant services. He is still single.

DANIELSON, Dennis M. (MS 1968) 2127 E. Memorial Drive, Janesville, WI 53545. Dennis is entomologist with Libby, McNeill & Libby dealing with processing crop pest protection for insects and diseases. His wife teaches home economics and they have two daughters; Theresa (a high school senior), Denise (8th grade), and a son Bob (6th grade).

DANIELSON, Stephen D. (BS 1974). Box 578, Imperial NE 69033. Steve says he "finished up my MS program at Oregon State University in July 1976 and began work with Agro-Serv in August. Glad to be back home in Nebraska." Steve is building a pest management program to fit into a total service for farmers in southwest Nebraska. He is holding farmer meetings and signing contracts this fall. He is still single.

DARLINGTON, Winthrop W. (BS 1939, MS 1941) 12 Harbord Drive, Bloomington, IL 61701. Winthrop is an Associate Professor of biology at the Illinois Wesleyan University. "I have been completely away from Entomology most of the time since leaving Nebraska. Just how far is indicated by the fact that I now have courses in Human and Environmental Biology, and in Geology." The two Darlington sons are out on their own and "the only dependant we have at home is Mr. Kaat, who is a native of Nebraska's sandhills." "As an environmentalist, I hope we finally have emerged from the age of chlorinated hydrocarbons and into one of integrated control."

DAWSON, Leo H. (MS 1965) Box 147, Kalispell MT 59901. Leo is a Fisheries Biologist with the US Forest Service in the Flathead National Forest where he is involved with habitat management. He and wife Lois have three children: Jeffrey, (graduating from NU 1977), Cheryl (graduating from high school 1976) and Laura (7th grade - Fall 1976).

DENNING, J. Allison (District Supervisor, Grasshopper Control, USDA 1938). 2020 W. Main, Jefferson City MO 65101. In January 1976 he retired from the Jefferson City Public School System. He and his wife, Helen, have a married daughter and three grandchildren. "My interest still is Entomology, grandchildren and fishing."

ECKHOFF, Dean E. (BS 1931) 1704 Flaten Avenue, Gering, NE 69341. Dean retired December 1974 from Livestock Inspector duties, USDA, APHIS Services. He continues to pick up blood samples to be sent to Lincoln for Brucellosis testing. During suitable weather he spends some time collecting Tiger Beetles (Cicindelidae). He guided Ronald L. Huber on a Cicindelid collecting trip in Eastern Nebraska in 1969 and he continues to collect specimens and data for interested cicindelophiles. "I hope to continue this hobby in spite of the adverse effect of sunshine on my skin."

EDMAN, John David. (MS 1961) 7 Woodlawn Road, Hadley MA 01035. He was Research Medical Entomologist and Assistant Director of the Florida Medical Laboratory until 1975 when he joined the University of Massachusetts as an Associate Professor. He teaches General Entomology, Veterinary Entomology, and Medical Entomology with his research on the biology and feeding behavior of Nematoceros Diptera. He has been a consultant for WHO in East Africa and on a Travel/Study Fellowship in England and as a Consultant with NIH. He and wife, Lil, have three children; Scott (High School Sophmore), Stacey (8th grade), and Sean (4 years). Lil "taught school for 3 years in Florida but has been sandbagging since the birth of Sean."

GATES, Robert L. (BS 1940; Field Supervisor Grasshopper Control 1944; PhD 1952, Chemistry, Botany) 143 Elizabeth St., Medina, NY 14103. Robert is "Research Director for the Agricultural Chemical Division of FMC Corporation. The thrust of the research is the discovery of new crop protection chemicals." His three children: Robert L. Jr, Susan, and Roger N. all have college degrees.

GATES, Doris B. (BS 1937; MS 1947; Staff 1943-45) Rt. 1 Box 25, Chadron NE 69337. Doris writes that she "taught at Chadron State College from 1955 until 1974 when I resigned to take the mail route (85 miles long with over 200 patrons). I still keep in touch with the college and help when I can. For example, I help with field trips for an ornithology class, and for an outdoor education class connected with the PE Dept. Just the other day I was asked to identify a flea from a gopher. I'm a little rusty in that subject. I write a weekly column--Nature Trails--for the local newspaper. In each I try to entertain a little while teaching something about current wildlife as birds, flowers and insects. It seems to be well received." (Doris was featured in an article "Mail Ma'am" in the Jan. 11, 1976 Magazine of the Midlands of the Omaha World Herald.--ed)

HAUKE, Harold A. (MS 1934) 602 S. Youngfield Ct., Lakewood Co. 80228. "Gladis and I have lived here since midyear 1967. A married daughter lives in suburban Dallas and our other daughter is presently teaching school in Saudi Arabia. Since retiring (from USDA) we have done a great deal of traveling in this and other countries in our VW camper. When at home we keep busy gathering natural items for Gladis' handcrafted items."

HEINRICHS, Delbert (BS 1955; Agriculture) Box 397, Henderson, NE 68371. Delbert is married and has two children.

HEINRICHS, Elvis A. (BS 1962, Agriculture; MS 1964) IRRI, Box 933, Manila, Philippines. After receiving his PhD (1967) from Kansas State, Elvis has been with the University of Tennessee in India and with the University of Wisconsin in Brazil. Since 1975 he has been with the International Rice Research Institute doing research on insect resistance and chemical control of rice pests. He and his wife Nancy have three children; Shawn(11), Kristen (7), and Wendy (6). "When in the area please stop by Los Banos to visit IRRI. Just let me know in advance and we can make arrangements to meet you at the airport and arrange for lodging."

HOPKINS, Mary H. (BS 1974, Agronomy; Graduate Student 1974-76). 4320 South 45th Street, Lincoln, NE 68516. Mary is in charge of Kjeldahl Laboratory in the NU Agronomy Department. She is now pursuing her MS in the Agronomy Department. She is married and has a 14-year-old son.

HOWE, Wayne L. (Head, Forage Insect Laboratory, USDA, 1957-61). 1401 Holiday Park Drive, Champaign, IL 61820. Wayne is an Entomologist with the Illinois Natural History Survey doing research on corn and curcubit insects. His chief interest at present involves attractants for the western corn rootworm adults. Wayne says that his children are all away from home. His wife, Marian is a Secretary at the U of I. Wayne also states, "I am strongly considering retiring within a year or two". (We hear that he has retired --ed).

HULETT, Lynne (Laboratory Assistant 1974-75) 1702 Manning, Apt. #1, Los Angeles, CA 90024. "I run the Los Angeles office of (Intertorg, Inc.) an international business firm (involved in) American-Russian trade liaisons. Single, free and easy."

JARVIS, James L. (Entomologist, Forage Insect Laboratory, USDA 1962-64) Plant Introduction Station, Ames, IA 50010. Still with the USDA, Jim is involved with evaluation of plant introductions for insect resistance--emphasis on corn, vegetables, and oil seeds. He is married and has 2 daughters.

JESS, Marvin L. (MS 1973) 1130 Vattier, Manhattan, KS 66502. Marv completed his MS with Dr. Kindler working with the Bluegrass Billbug. He is now working toward his PhD at Kansas State, doing research on resistance of ponderosa pines to the Nantucket pine tip moth.

JEPSON, Marilyn J. (BA 1971, Zoology; Laboratory Technician 1975-76) 2300 S. 62nd, Lincoln, NE 68506. Marilyn worked as a research technician for the Eppley Institute at UN Medical Center, Omaha, prior to joining the Entomology Department as a Lab Technician for Dr. Ball at the Insectary. Married in 1974, her husband Jon works for the Internal Revenue Service. Marilyn left the Department just prior to becoming a mother--baby girl Christine was born July 15, 1976.

KANTACK, Benjamin (Instructor 1958-62; PhD 1963) 1907 Derald Drive, Brookings, SD 57006. He is Extension Entomologist at South Dakota State University. "Ben and Frances still holding at seven - Mark a senior in Pharmacy at SDSU; Ramona, a sophomore in speech and human relations at Kansas University; Randy, a high school senior, an excellent distance runner in Cross Country and Track; Chris a high school junior lettered on the varsity football team."

KEECH, Charles Franklin (MS 1934) Rt. 5 Box 157, Lincoln, NE 68521. Charles retired in January 1976 from the US Geological Survey. He is doing consulting and "can be found in Rm 121A Nebraska Hall, UN, assisting in preparation of technical reports on Nebraska water resources." He and wife, Velma, have two children: Carl F., Lincoln; and Jeanette Morris, Kinsman, Ohio.

KELLER, Larry L. (BS 1972, Entomology & Agronomy). 1840 Dogwood, Gering, NE 69341. Larry is Assistant Manager of Wickes Agriculture. His wife's name is Beverly.

KLOSTERMEYER, Edward C. (BS 1940, Agriculture; MS 1942) NW 1020 Charlotte, Pullman WA 99163. Eddie is now Professor of Entomology at Washington State University. "After 28 years in research at the Irrigated Agriculture Research and Extension Center at Prosser I transferred to the Pullman Campus of WSU to engage in a teaching-research position, replacing Horace Telford, who retired. (Eddie was replaced at Prosser by Keith Pike, a UNL post-doc 1974-76). I find teaching an exciting, demanding, and time-consuming occupation. Having done no teaching since my days as laboratory instructor at the U of N I found lots to learn and re-learn. I got through the first semester and hope that the students profited from my efforts. My teaching will be in the field of economic entomology and ecology and my current research is on the domestication of a species of Osmia bee as an orchard pollinator. My son, Lyle, still unmarried, is a graduate student in entomology at U of N. My daughter provided a possible 3rd generation entomologist. Her son, now 3 years old, gets frequent lessons in entomology from both mother and grandfather." (another grandson born in June 1976-ed.)

KNULL, Mrs. Josef N. (Dorothy Johnson) (MS 1932) 330 E. Dunedin Road, Columbus, OH 43214. "My husband, Josef N. Knull, died April 24, 1975. We had continued our collecting trips to Arizona through 1974." Dorothy is collecting poetry with references to insects.

KOERWITZ, Fred L. (MS 1961) 2860 Maple Road, Columbus, NE 68601. Fred is Chairman of the Science and Health Cluster at Platte Technical Community College. His "duties include planning, programming, budgeting, and evaluation of the curricular activities of 18 faculty in the natural, physical, behavioral, and health sciences. Completed the D. Arts degree, 1972, University of Northern Colorado, Greeley." He and his wife, Marian, have two daughters: Karin (22) received her BS (El. Ed) from Kearney State in May and Jana (16) is a senior at Columbus High.

KOINZAN, Steven D. (BS 1971; MS 1974; Extension Technician 1972-75) POB 286, Elgin, NE 68636. Steve is now a Pest Management Specialist with the John P. Claassen Co. where he "supervises 10,000 acres of corn under pest management and the management of 25 pivot irrigated quarters in northeast Nebraska." He and his wife, Lois, have a son Heath (3).

KONSLER, Gerald R. (PhD 1975, Zoology and Entomology; Laboratory Research Technician 1974-75) Now Director of Health Sciences at the Des Moines Area Community College, Gerry administers the Health Programs. His wife, Rue, and daughters Kelley and Kim joined him in Ankey in June 1976. He writes, "very much enjoying my new position and reflect fondly of my passage through the University of Nebraska and all of my friends there. (I) plan to collect Iowa spiders beginning spring 1976."

KROGH, Arthur C. (BS 1941, Agriculture) 3406 Hill Street, Huntington Park, CA 90255. Arthur is retired from the USNR as a Lieutenant. He is an out-patient at the Wadsworth VA Hospital in West Los Angeles. He has been married to Julia Kleven Krogh for 38 years and they have no children. He is also a Life Member of the Los Angeles Scottish Rite 32°.

LaBERGE, Wallace E. (Associate Professor 1959-65) Illinois Natural History Survey, Urbana, IL 61801. Wally is a Senior Scientist with the Natural History Survey and a Professor with the University of Illinois. He is currently working on the "systematics of bees and ants, to include a revision of Andrena of the Western Hemisphere, revision of Anthidium of NA, revision of Xenoglossodes of NA, and the Apoidea of Illinois, etc. (He) taught taxonomy in the summer 1975 which included extensive field trips with 14 grad students and a TA - very stimulating as I have not been teaching since 1965. Spend vacations camping and canoeing with the family." He and wife, Betty, have three children; Dan (16), Leslie (14), Laura (11), all doing great in school.

LAIRD, Edward F. Jr. (MS 1951; Research Assistant, Plant Pathology 1951-53) 2101 Livingston Street, Riverside, CA 92506. Ed is now a Staff Research Associate at the University of California, Riverside where he is "assisting in research on navel orangeworm et al on walnuts and almonds." His wife, Norma, is employed and they have two sons: Greg, working, and Jeff, in Riverside City College. "Joe Pappas, Jack Lomax, Martin Muma and I got together for a 'rap' session last year, enjoyed ourselves almost as much as in the past at U. Nebraska."

LATHROP, Lloyd W. (BS 1954, Agriculture) 25319 Del Mundo, Carmel, CA 93921. Lloyd retired from the US Army as a Lieutenant Colonel in July 1975. He served in Vietnam (68-69), Hawaii (69-70), and Fort Ord, CA (72-75). He is now "enrolled in a 59 cr hr program in Equipment Technology at Hartnell College, Salinas, CA." He and his wife, Mary Ellen, have four sons: Kevin (19), Douglas (17), David (14), and Bruce (13). "Douglas is to attend the California Maritime Academy 1976." The Lathrops own a "Shields Class" racing sloop and are members of the Waikiki Yacht Club and the Monterey Peninsula Yacht Club (Secretary 1976).

LAWSON, Donald E. (BS 1951; MS 1955; PhD 1969; Instructor 1962-69) 12510 W. Marquette Dr. New Berlin, WI 53151. Don is a Quality Assurance Manager with Krause Milling Company where he is responsible for product quality, sanitation, and packaging research for 4 manufacturing facilities. He is also chairman of the Technical Committee, for the American Corn Millers Federation. He and his wife Lorraine, have 2 married sons with 2 grandchildren and also another son (5).

LIEDTKE, Stanley D. (BS 1948, Ag Engineering) 1930 Carter Road, Dubuque, IA 52001. He is supervisor of Engineering Materials and Standards with John Deere Dubuque Works of Deere & Co. He is "actively engaged in technical society work with SAE and the ISO (International Standards Organization), Metric Conversion Coordinator. Spent week in Helsinki Finland on ISO work. Son, Stan, graduated in Photography from U of Iowa, daughter Anne has MSc Chemistry from Kan. State. Still maintain active interest in Biological Science thru nature photo hobby, hiking & cross country skiing."

LOMAX, Jack W. (BS 1948, Agriculture; MS 1953, Agriculture; Extension Entomologist 1948-50) 5393 Pinehurst, Riverside, CA 92504. "After traveling for the University for 3 years and for various chemical companies another 18 years, I decided that I liked travel well enough to pursue it full time. Geri and I purchased Riverside Travel Service in 1969. Continuing ones education in the travel business is called a fringe benefit by many. And so it is with us also. We have been on every continent but one and hope to rectify that this year, as we intently pursue our education. It's deductable, too." Jack and Geri have two grown children, Jim and Judy and two grandchildren.

LUEDTKE, Robert J. (BS 1971) 816 No. 17th #60, Bozeman, MT 59715. Bob is a Research Associate at Montana State University as aquatic entomologist for Fisheries Bioassay Lab. He obtained an MS in Entomology from the University of Idaho in 1973. He and his wife, Carolyn, have a daughter, Jessica Lynn, born June 5, 1975. Bob is an avid fisherman and fly tier.

MARVIN, Phillip H. (Secretary, Bruner Entomology Club 1972-74) 1730 Skyline Drive, Lincoln, NE 68506. Phil is self-employed as a Crop Protection Consultant. He "investigates claims of damage from pesticides to animals, crops, and other vegetation. Insecticides sometimes are involved. Watch legislation re: pesticides and environmental protection on national and state levels." He is married with 5 children who "all left the nest, except the youngest, and he is about to do so."

McCOY, Clayton W. (MS 1963) PO Box 1088, Lake Alfred, FL 33850. He is an Associate Professor with the University of Florida. His "research (is) confined to the biology and integrated control of phytophagous mites on citrus with particular emphasis on the study of entomopathogenic fungi of mites." He and his wife Lynne Ellen have two children: Lisa (8) and Pat (5).

McGONEGAL, Earl R. (Entomology Research Technician 1967-74) 500 Hanover Street, Concord, MI 49237. Earl retired on March 31, 1974 after 15 years with the University of Nebraska. He is working only during the summers at a Golf course. Winters are spent ice fishing and loafing. With his wife Lucille he has two sons: one retired after 20 years in the Air Force, other is still in the Air Force (17 years). He has five grandchildren, the eldest is now entering the Air Force.

McKIE, Ronald L. (BS 1974, Zoology; Research Technician 1974-75; Graduate Student 1975-76) 2220 Orchard Street, Lincoln, NE 68503. Ron received his BS in June 1974 and then worked as Greenhouse Technician at the Insectary for a year. He is now working in Lincoln.

MEDLEY, Jerry G. (BS 1958, Ag Extension; USDA Livestocks Insects Laboratory 1962-65; MS 1964) Rt. 3 Box 720, Gulfport, MS 39501. Jerry is Assistant Laboratory Head with the USDA APHIS Southern Methods Laboratory. He is screening pesticides to obtain a replacement for Mirex bait used to control the Imported Fire Ant. He is married and has six sons and one daughter, all are home but Jason, the oldest, who is with the Air Force.

MICKEL, Clarence Eugene (BS 1917; Extension Entomologist 1917-20) 6601 Los Arboles Circle, Tucson, AZ 85704. Clarence has been a Visiting Scholar with the University of Arizona since 1962. He has no official duties at the University but is doing research on the Taxonomy of Mutillidae, started in 1918 at the University of Nebraska. He was the first Extension Entomologist in both Nebraska (1917-20) and Minnesota (1922-30). He served as Research Entomologist with the American Beet Sugar Co., Rocky Ford, CO (1920-22). After 38 years on the Department of Entomology Staff at the University of Minnesota he retired as Head of the Department in 1960. He was a John Simon Guggenheim Fellow (1930-31). He has done research on Mutillidae at the British Museum of Natural History, London; University of Berlin; and Museum Nationale d'Histoire Naturelle, Paris. He has three children (one deceased 1950), five grandchildren, and twelve great grandchildren.

MOWER, Keith E. (BS 1942, Agriculture) 116 Balsam Street, Ft. Morgan, CO 80701. Keith is now a Sales Engineer with Gifford Hill & Co., Inc. as an irrigation specialist. He is married and has two sons, Richard and Kent, and one granddaughter. Son, Kent, received an MS degree in Entomology from Colorado State University (1975) and is with the Division of Plant Industry & Research, Polasade, CO working with Peach pest control.

MUMA, Martin Hammond (Associate Extension Entomologist 1945-48; Associate Entomologist, Associate Professor, Associate Curator 1948-51) PO Box 2020 Silver City, NM 88061. Martin is retired and his post-retirement research projects include taxonomy, biology, and ecology of Solpugids and spiders; ecology of scorpions; biology of Uropygi. "I have averaged since retirement, three technical papers per year. Also assist acarologists with taxonomy and systematics of Phytoseiidae. Kay and I are alone again for the first time in 35 years of rearing children (Cherie #5 and Evie #6 are in college), and we are finding out that we still enjoy each other. Kay and I are buying a fishing-grocery store beside Lake Roberts in Grant Co., NM to operate. Hopefully it will offset what inflation has done to a retirement salary."

MUNSON, James Derril (Instructor 1966-71; PhD 1970) 19 Ground Pine Road, Wilton, CT 06897. Jim is product manager with Stauffer Chemical Company with marketing and development responsibility for the US and Canada in insecticides produced by Stauffer Chemical. He and his wife, Ethelene, have two daughters (12 and 9).

NELSON, Douglas D. (BS 1948) 92 Holleran Drive, Downingtown, PA 19335. Doug is Manager International of the Ag Chemical Division of FMC Corp. He manages the development and sales activities of the Ag Chem Division's international business. This includes everything except the US and Canada. He recently moved to PA from Middleport, NY. Philadelphia is the new home for the Chemical Group headquarters of FMC. He is married and has two daughters (one doing PhD in Art History at University of North Carolina, other in Law School at University of Florida) and a son (attends Dartmouth College).

NELSON, Robert Hale (BS 1929, MS 1930) 7309 Finn's Lane, Lanham, MD 20801. "In the afternoon sunshine of retirement, my duties are all volunteer. Mabel and I travel some and care for some 1000 azalea bushes. We are enjoying it. (They have four granddaughters). Last year I was editor and author in a small part of a book---Pyrethrum Flowers. It is supposed to be out in 1976." (Bob retired in 1968 as Executive Secretary of the Entomological Society of America having served since 1955. In 1971 he served as President of ESA.--ed).

NORTON, Maurice R. (BS 1954, Agriculture; DDS 1962 Dentistry) 206 Vine Street, Louisville, NE 68037. He is a practicing dentist. He and his wife, Marilyn have a daughter (17) and two boys (9 and 5).

NYHUS, Peter Alan (Graduate Student 1960) Rt. 3 Box 65, Prior Lake, MN 55372. Peter is now "salesperson" for Xerox Corporation. His wife Joanne and he have a son Andrew (10) and a daughter Amy (7).

PAPPAS, Joseph L. (BS 1948; MS 1950) 4646 Gardena Drive, Riverside, CA 92506. Joe is a Staff Research Associate with the University of California working on projects associated with the biology and control of armoured scale, Argentine ants, and European Brown Snail. "Son, Tom, is married with two children and lives in Lincoln, NE. One daughter away from home, another contemplating a June wedding and 2 teenage daughters still at home." Joe also writes that "planning a get-together of Nebr. alums at an Entomology Conference to held at the University of California, Riverside on March 24-25 (1976). Committed thus far are Jack Lomax, Ed Laird, Len Seaton and myself. Hope to get Dick Lyness here from Fresno and the Mummas to come over from New Mexico." (We haven't heard how this came out.--ed).

PETERSON, James L. (PhD 1972) 600 No. Essex Narbeth, PA 19072. Jim is the acting chairman of the Department of Limnology at the Academy of Natural Sciences of Philadelphia where he is "carrying on standard administrative duties for this basic and applied research institution. Also involved in a number of research programs." He is married with 2 children: Hans (7) and Erika (3). "Since leaving in 1972 - two years postdoc type work in Entomology and Limnology at the University of Wisconsin. Two years in Washington DC with the National Commission on Water Quality; a congressional study commission chaired by VP Rockefeller."

PHILIP, Cornelius B. (BS 1923; Honorary DSc 1952) 50 Chumasero Drive, San Francisco, CA 94132. Dr. Philip is now a Research Fellow with the California Academy of Sciences in San Francisco. After 40 years with the US Public Health Service he retired in 1970 as the Director of the Rocky Mountain Laboratory, Hamilton, Montana. "Though honorary staff, I still publish on Tabanidae, papers nos. 269-271 in press, and a section in recently issued 8th edition Bergey's Manual of Determinative Bacteriology. Present visual difficulties, complicate reading what I'm typing at arm's length."

PIKE, Keith S. (Research Associate 1974-76) Washington State University, Irrigated Agriculture Research and Extension Center, Box 30, Prosser, WA 99350. Keith received his MS and PhD from the University of Wyoming and then came to Nebraska to work with the Environmental Protection Agency project dealing with soil arthropods of corn. Keith worked primarily with white grubs. In addition he helped prepare bibliographies on Phyllophaga and Cyclocephala. He left in February 1976 to join the staff of Washington State University at the station in Prosser (replacing a Nebraska alumnus E.C. Klostermeyer who transferred to Pullman). Keith's work is with greenbugs on wheat. He and Louise have three children.

PREECE, George A. (BS 1950, Agriculture) 6400 Hiway 2 SE Rt. 8, Lincoln, NE 68506. George is President of Mid-State Pest Control, Inc. "I am semi-retired, having sold part of my business. As a registered sanitarian I was appointed to the Lancaster County City Board of Health and am presently serving as President. I also served on the Development Comm. for the Southeast Nebraska Health Systems Agency. I am still active in the Shrine where I served as Potentate in 1971. 4 daughters, 3 sons-in-law, 3 grandchildren, 1 wife."

QUATE, Lawrence W. (Assistant, Associate Professor 1951-58) 14755 High Valley Road, Poway CA 92064. "Independently employed in real estate investment & property management (Larry Quate, Realtor). Teach Real Estate classes at Palomar Community College, San Marcos, CA. Divorced, remarried, three children, Kathy (13), Kenneth (11), Brian (8).

RAI, Patte Shivarama (PhD 1970) V.C. Farm P.O. Mandya, Karnataka INDIA 571405. Patte is an Entomologist with the University of Agricultural Sciences where he is "working as Rice Entomologist in the All India Co-ordinated Rice Improvement Project. Duties include study of biology, ecology and control of major rice pests. Wife and one daughter aged 7 years."

RAUN, Earle S. (Chairman and Professor 1966-70; Associate Director Nebraska Cooperative Extension Service 1970-74) 3036 Prairie Road, Lincoln, NE 68506. Earle is the Entomologist Manager of Pest Management Consultants, Inc. a firm he started two years ago. This involves "1) Pest Management Consulting with Nebraska and Colorado Farmers 2) Field scale research contracts on corn pests, 3) Speaking engagements around the country on Pest Management." (Earle is also serving as a Consultant with the University of Mid-America in their production of a series of TV programs for training for certification of private pesticide applicators -ed) "Georgia and I still have youngest daughter, Patricia (17), at home. Nancy is a bookkeeper at Lincoln Aviation Institute. Michele is nursing in Iowa City. Flying light planes is still a hobby as well as useful in my business. Fishing and bridge are other enjoyable hobbies. Georgia is a 'Pink Lady' at the hospital and reads for tape recordings for 'books for the blind' one afternoon each week."

ROBERTS, Raymond (MS 1929; Instructor to Associate Professor 1924-43) 5012 Adenmoor Avenue, Lakewood, CA 90713. Raymond retired in 1968 and says "present duties are to keep out of the way. I have developed the disease of old age, Angina. There are three in our household, at present - my wife and her mother (97) and myself." They have two sons and one daughter living and seven grandchildren. Their oldest son died tragically in 1966. "I have had quite some time to kill since I was retired in 1968. I do not know if my activities have held up the Entomological profession. I am enclosing a few samples." (The samples were poems about insects and were enjoyed by the staff and students. Thank you, Raymond. -ed).

ROLOFSON, George Lawrence (BS 1961, MS 1964) 5119-A Lawndale Drive, Greensboro, NC 27405. George is Senior Toxicologist with CIBA-Geigy Corp. where he is "currently responsible for developing the safety data required by EPA for registration of pesticides. These include acute, subacute, and chronic toxicity studies on fish, wildlife, and mammals. Attended International Entomology Congress in Moscow (1968), Canberra (1972), and plan to attend Congress in DC in 1976. Still single."

SANDINE, Mick (BS 1970) 1448 18th Street, Gering, NE 69341. After completing his MS at the University of Idaho on the environmental impact of sedimented streams, Mick was a pesticide researcher in Florida for CIBA-Geigy from 1974-76. He is now an assistant county agent in Scotts Bluff County. His main duties are 4-H activities and urban agricultural problems. He and his wife are just getting settled in Gering.

SCHALK, James M. (Entomologist, USDA, Forage Insects Laboratory 1965-71; Instructor 1965-71; PhD 1970) USDA-ARS-Build 470, Beltsville, MD 20705. Jim left in 1971 for an assignment in Iran and is currently Research Entomologist with ARS working on "host plant resistance to insects - vegetables. In particular, Colorado potato beetle resistance in tomatoes." He and Anna have 4 children: Jim (13), Stanley (11), Elizabeth (9), and Sophia (7).

SCHOCK, Esther (Sally) (Secretary 1928-74) 1142 North 44th Street, Lincoln, NE 68503. Sally says that her present position is: "You name it - and that's it! in the Schock Household. Sally "retired in October 1974 as Secretary of Entomology Department. Haven't had time to look for a part-time job - yet. On call at two-three places for volunteer office work. That, together with all the duties at home, keeps me plenty busy. Besides Mel, Inki (black poodle), and Muff (giant Persian cat), I have five grandchildren that love to come to our home for wienie roasts, hamburgers and whatever I have to offer. They are all at the age where they have to bring their boy or girl firends along. Lots of fun. Really enjoying retirement. Am doing things I haven't had time to do the past umpteen years. We go to all the football games - here and out-of-town, and have taken several interesting trips. I typed the above while covering for a secretary in an office - didn't pay attention to where I was typing!! Wouldn't that jar you! (She didn't fill in the blanks -ed) If you don't like what I typed - you go ahead and say whatever you wish." (With that last statement you are leaving yourself open, Sally. -ed)

SCHONE, Sonie Marie (Part time Secretary 197 -74) Sonie is a graduate teaching assistant in the Department of Modern Languages at UNL, teaching two beginning courses. She is working towards a Masters Degree in French.

SCOTT, Donald R. (BS 1948, MS 1952) Research & Extension Center, Parma, ID 83660. Don is now an Associate Research Professor of Entomology with the University of Idaho. His research includes: "Inheritance of resistance of vegetable crops to the sugar-beet leafhopper; Management of insect pests in Idaho: Genus Lygus; The corn earworm on the wet corn seed crop; insecticidal seed treatments: efficacy and phytotoxicity." He says, "oldest son, Bob, is a journeyman electrician in Boise and is married with one daughter; George is a junior and Tom a Freshman at University of Idaho; and Mary is a Sophmore at Parman High. (Don has served as) Chairman of the Pacific Northewst Vegetable Insect Conference (1975); helped initiate Tumblebug award at above conference in 1972 - received Tumblebug award in 1976; am now 'Exaulted Dung Beetle'."

SEXSON, Gary D. (MS 1971) 5215 Nippersink Drive, Richmond, IL 60071. Gary is the Midwest Technical Representative for ICI, United States, Inc. where he is involved in research and development activities in Illinois, Wisconsin, Minnesota, Iowa, and Missouri, including establishment of University research as well as putting out plots and working with growers. He has two children: Gary Dean (7), 2nd grade, and Deana Lynn (4) and "will start school next year."

SKINNER, Jasper D. II (BA 1969; MS 1971; PhD 1974; Extension Technician 1969-70; Research Associate in Agronomy 1974-75). ICRISAT, I-II-256 Begumpet, Hyderabad City, 500016AP, India. Jasper is an Assistant Entomologist with ICRISAT working in Hyderabad, India on sorghum shoot fly attractants and stem borer pheromones. He and his wife, Ethel, have one daughter Cliti Eleta Nokomis (6). (Understand Jasper is back in Lincoln. -ed)

SOOTER, Clarence Andrew (Extension Entomologist, Assistant and Associate Professor 1946-49) 21 Lancaster Drive, Bella Vista, AK 72712. He retired in January 1976 from the USPHS as "Bird & Bug Watcher". He "moved to present location where built home. Hope to have final details on home completed soon so that can travel and devote time to ornithology, fishing, hunting and golfing and travel. Location pretty much central for children in Minnesota & California and relatives in Arkansas and Oklahoma."

SPACKMAN, Everett, W. (MS 1954) 1132 Curtis Street, Laramie, WY 82070. He is Extension Entomologist with the University of Wyoming working on all areas of extension entomology. "On July 1968 I resigned from the Wyoming Department of Agriculture as State Entomologist to accept the appointment as Extension Entomologist." He has four boys: Mike (24), Dan (23 and married), Lowell (18), and Curtis (14).

SPACKMAN, Lloyd R. (BS 1950) Genoa, NE 68460. Lloyd is a Sales Supervisor with International Minerals and Chemical Corp. dealing with fertilizer sales for the State of Nebraska. He has 3 sons: one - UN Grad, the other two attend UN.

STAETZ, Charles A. (MS 1972, PhD 1975) 1643 Walnut Drive, Woodstock, IL 60098. Chuck is an Entomologist with Velsicol Chemical Corp. He is involved with "screening insecticide candidates - lab & field; Maintaining insect cultures; beginning a small amount of work on insect growth regulators." He and his wife, Crystal, have a daughter Susan with another child due in July 1976.

SUTHERLAND, Douglas William Scott (Graduate Assistant 1955-56) 1422 Quinwood Street, Adelphi, MD 20783. He is an Entomologist with the US Environmental Protection Agency where he is involved with "preparation of Volume III of the EPA Compendium of Registered Pesticides, and EPA list of Insects and other organisms." He served as Chairman of the Local Transportation Committee, XV International Congress of Entomology; Chairman, Committee on Common Names of Insects, ESA; and Board of Directors of the Chesapeake Chapter ARPE. Wife Ann and he have 4 children: Laura (11), Danial (9), Karen (6), and Gail (4). "We enjoy folk dancing and caving. Camped throughout the Maritime Provinces last summer."

TARNOPOL, Joseph H. (MS 1969) Box 405, Doylestown, PA 18901. He is a Vector Control Specialist with the Bucks Co. Department of Health where he "directs all phases of a county vector control program - emphasizing rodent and mosquito program. Conduct complete education and public relations program throughout the county. Currently looking for a position with state or federal governments, or universities and research organizations in any aspect of entomology or related areas in instructional, educational, research, laboratory or taxonomic disciplines. (Any suggestions?) Single, record collector, like to travel."

TATE, H. Douglas (Associate Professor 1939-40; Professor and Chairman 1941-46) 1624 Scarborough Drive, Ft. Collins, CO 80521. Dr. Tate retired in 1970 as Manager of Ag Chemical Research and Development with Uniroyal. "1971-72, inclusive, on special assignment with Uniroyal covering Far East with headquarters in Hong Kong. Lived first 6 months of 1973 in Hawaii, then came back to US Mainland. After carefully considering many good places to live in retirement we - my wife Lorraine and I - chose Fort Collins. We're glad we did. It's a good place to live."

TOLLEFSON, Jon James (Research Assistant 1967-68) 4124 Tucson Ct., Ames, IA 50010. Jon "did not complete MS degree at UN due to offer of federal employment (draft notice). (Jon's wife, Carla, was Laboratory Technician (1967-68) for Dr. Ball - ed) Jon is now Assistant Professor at Iowa State University where he is "Research Leader of the Corn Insect Research Project. My research objectives concern the management of insect pests in corn. I teach courses in the areas of Economic Entomology and Host Plant Resistance. Carla and I have added 2 daughters to the family since leaving the Univ. of Nebr. Kirsten Anne was born 11 July 1970 and Karin Lee on 14 January 1975."

VALDER, Stephen M. BS 1963) PSC 4 Box 17442 APO San Francisco 96274. Stephen is a Major in the USAF in the Republic of the Phillipines serving as Command Medical Entomologist with the Pacific Air Forces. He "formulates and enforces PACAF Medical entomology, including vector surveillance pest control, environmental protection and international quarantine. Act as epidemiologist in vector-borne disease outbreaks among USAF personnel in Asia & the Pacific. Three children since 1968: Ken (7), Becca (5), Jim (3)."

VANCE, Arthur (BS 1976) Department of Entomology, University of Georgia, Athens, GA 30602. Art is now pursuing graduate studies in entomology at the University of Georgia. He is working with the lesser cornstalk borer under the supervision of Dr. John All.

VOSS, Carrol M. (BS 1941) PO Box 578, Gettysburg, PA 17325. He is President of AgRotors, Inc. He is also "working with EPA on federal flight manual for aerial applicators. Working with state of Pennsylvania on Pest control certification regulation." He has served as "Consultant for World Bank - Agriculture Aviation Mission to India (1970 & 1973); Consultant World Health Organization - Helicopter research in Black Fly control - Upper Volta Africa (Vector of River Blindness parasite) (1974). Four children - three married - youngest son junior in HS. Father & son hobby of underwater photography. Working with Univ. of Maine, summer of 1976, on u/w archeology and photography recovery of Revolutionary War Frigates in Penobscot Bay."

WALSTROM, Robert J. (BS 1947; MS 1949) 1409 First Street, Brookings, SD 57006. Bob is now Head of the Entomology-Zoology Department at South Dakota State University. He is 50% teaching and 50% research (alfalfa insects). "Son - Wade (29) - married, working on PhD in Electrical Engineering at Iowa State. Son - James (26) - married, Navigator US Air Force, stationed at Rapid City, South Dakota."

WEDBURG, John L. (BS 1966, Animal Science; PhD 1974) 206 McHenry, Urbana, IL 61801. John is Extension Entomologist with the University of Illinois where he is "develop(ing) and conduct(ing) educational programs on the control of insects attacking field crops (corn, soybeans, small grains, forages); supervise the alfalfa pest management program; extension programs concerning control of household insect pests; responsible for 4-H entomology program. Wife - Marilyn; 2 daughters - Kim (6), Jennifer (3)." ("Go Big Pink??" --Really now, John -ed)

WEEKMAN, Gerald T. (Assistant Entomologist to Associate Professor 1957-66). 909 Emory Lane, Raleigh, NC 27609. He is Extension Professor and Specialist-in-charge at North Carolina State University. He is "responsible for extension entomology programs in North Carolina, Pesticide Coordinator for School of Agriculture and Life Sciences, Consultant - Office of Pesticide Programs, Operations Division EPA. Wife Nancy and sons Thomas and James. Boys play youth football. Dad helps coach. Enjoyed my very brief visit to the Nebr. Campus in Spring of 75. It's great to see and visit former co-workers."

WEISE, Marla Benson (BS 1967, Laboratory Technician 1963-67) 1587 Forest, Des Plaines, IL 60018. "Married in October 1969. Husband currently employed as systems engineer with IBM. I am on a leave-of-absence and doing some teaching as a substitute (District 64, Park Ridge, IL). Our summer interests include camping and boating and traveling. Our most exciting adventure was a raft trip down the Colorado River. We are active members of a ski club and do some skiing locally. We take one trip to the Rockies each year for a week. I am actively involved in American Association of University Women and belong to their contemporary reading group. I am still enjoying my 'wifely' duties and sewing."

WHITE, Richard E. (Assistant Curator Summer 1963) 11005 Layton Street, Upper Marlboro, MD 20870. He is a Research Scientist with the USDA as a "beetle taxonomist. Currently working on a Field Guide to the Beetles for the Peterson series, Houghton Mifflin."

WILLIAMS, John H. (MS 1960) 1570 Presidential Drive, Columbus, OH 43212. "I am presently Technical Director for the State of Ohio Power Siting Commission which has jurisdiction over siting and construction of electric generating plants and high voltage transmission lines. My office is responsible for evaluation of utility applications for major facilities in the areas of technical, environmental, social, and economic impacts. This responsibility also entails preparation of court testimony and the preparation of the State's case on any issue which arises in the course of certifying applications. This is a far cry from entomology and I have not been professionally active as an entomologist since 1969. I spent nine years on the faculty at Ohio State before assuming my present job. I got married in 1974. My wife, Jennifer, after many years as a textbook editor with a major publishing house, decided to return to school for a graduate degree. She is presently completing her program in population studies and preparing for her exams this spring. I have enjoyed supporting Nebraska football in a town where Woody Hayes is considered God! My Nebraska bumper sticker has stimulated many comments. I still find time to add to my insect collection each year."

YAPP, Rockford G., Jr. (BS 1954, Agriculture) 406 Kari Court, Houston, TX 77024. Rocky is Manager, Solvents Business center with Shell Chemical Company where he is "responsible for the total operation of Shell Chemical Company's oxygenated and hydrocarbon solvents business. Prior to this assignment (November 1, 1975), I had a similar assignment for Shell in agricultural chemicals. Married to Sharon Horning Yapp, Nebraska, 1954. Three children: Ricky (18), David (15), Carolyn (12). Ricky presently intends to enter the University of Nebraska as a freshman September 1976."

ZOUCHA, Rick M. (BS 1973, Wildlife Biology; BS 1976, Entomology) 3418 R Street, Lincoln, NE 68503. Rick is co-owner of American Exterminating Company and Mid-State Pest Control. He serves as service technician, service manager and pest control operator in all aspects of structural pest control. "Hope to educate the public that all PCO's are not concerned about making the almighty buck but are interested in helping the public in all aspects." He is married and has 2 children (3 and 1).

We regret that we did not have current addresses for, or questionnaires were not received from, the following alumni:

Walter R. Akeson (BS 1959, MS 1961, Research Associate)
Marcel Anderson (Student)
Warren T. Atyeo (Prof. & Curator Museum 1958-67)
John Baker (Graduate Student 197 - 74)
David Becker (Student)
Keith Becker (BS 1971)
Pamela Beardsley (Sec. 1974)
Gary Bell (BS 1975)
Montana Bennett (BS 1974)
Lawrence Bewick (Associate Prof 1950-51)
Norman L. Braasch (BS 1950, MA 1955, PhD 1965)
Charles H. Brett (BS 1930, MS 1938)
Edward J. Bishop (MS 1973)
Elden Glen Burcham (BS 1948, MS 1951)
Merril D. Cates (PhD 1968)
M.F.B. Chaudhury (PhD 1971)
Richard V. Conin (Staff)
Gabriel Diaz (MS 1963)
Thomas R. Dean (BS 1968)
John Fardal (MS 1969)
Edson Fichter (BS 1935, MA 1937, PhD 1942)
Marilyn Gana (APHIS Sec.)
William S. Gibson (BS 1950)
Lewis T. Graham (Assist. Entomologist 1942-43)
Joe T. Gregory (BS 1959)
Eurgene W. Hamilton (BS 1949, MS 1952, Res. Assist., Entomologist 1951-57)
John F. Hermanussen (USDA ARS Technician)
Robert W. Helm (Exten. Entomologist 1950-52)
Ephriam Hixson (Dept. Chairman 1946-1950, Assoc. Dir. Res. Inst. 1949-54)
Oscar William Isakson, Jr. (MS 1963)
William Jansen (PhD 1970)
Mahesh D. Jha (PhD 1972)
Calvin Jones (USDA ARS Livestock Insects Lab 1956-72)
Ahmed Mohamed Kadoum (MS 1963, PhD. 1966, Instructor 1965-66)

Karl L. Koch (AB 1927, MA 1929)
Albert Kishaba (Assist. Prof 1960-63, USDA ARS Forage Insects Lab)
Oswald Kreick (Technician 1957-61)
Patricia L. Landers (MS 1970)
E. Maxton Laughlin (BS 1943)
Claude P. Lindekugel (BS 1967)
Kenneth Ludwig (MS 1973, Technician 1973-74)
Melvin E. McKnight MS 1958, Forage Insect Lab USDA 1957-59)
Lawrence Namerow (BS 1975)
Elray Nieman (MS 1969, 1971)
Kenneth R. Orwig (PhD 1967)
Christian Y. Oseto (MS 1970, PhD 1973)
Hikmet Ozbek (MS 1970)
Chong K. Park (MS 1966, PhD 1969)
Johnie Perdue (USDA Tech Livestock Insects Lab)
Paul C. Peterson (PhD 1969, Instructor 1967-68)
Donald Renlund (Student)
Jon J. Rhine (Instructor 1963-65, Extension Survey Ent. 1965-67)
David Ribble (PhD 1967)
Carl W. Schlueter (BS 1948)
Leonard E. Seaton (BS 1950, MS 1952)
Lyle F. Selko (BS 1935, MS 1936)
Donald Short (PhD 1971)
Robert G. Simpson (Extension Entomologist 1959-60)
Don Silhacek (BS 1958, MS 1961)
Glenn M. Stokes (MS 1962)
Eugene G. Thompson (Res. Assoc. 1959-60)
Mrs. Roberta (Kimble) Trumble (Sec. 1942)
Dewey Urbauer (MS 1971)
Jerry VandeBerg (MS 1965)
Dan Watson
Morgan C. Webb (PhD 1961)
Richard N. Wedderburn (PhD 1972)
Russel Whitmore (MS 1975)
Richard Kim Winfield (Student 1958)

PUBLICATIONS

1968

- Akeson, W.R., H.J. Gorz, F.A. Haskins, and G.R. Manglitz. 1968. A water-soluble factor in Melilotus officinalis which stimulates feeding by the adult sweetclover weevil. J. Econ. Entomol. 61(4):111-12.
- Akeson, W.R., F.A. Haskins, H. J. Gorz, and G.R. Manglitz. 1968. Water-soluble factors in Melilotus leaves which influence feeding by the sweetclover weevil. Crop Sci. 60:574-6.
- Anderson, L.W. 1968. Now wheat can fight grasshopper enemies. Nebr. Agr. Exp. Sta. Quarterly. 15(1):5-6.
- Allington, W.B., R. Staples, and G. Viehmeyer. 1968. Transmission of rose rosette virus by the Eriophyid mite, Phyllocoptes fructiphilus K. J. Econ. Entomol. 61(5):1137-40.
- Atyeo, W.T. and J. Gaud. 1968. Two feather mite genera (Analgoidae and Proctophyllodidae) from birds of the families Oxyruncidae and Pipridae Passeriformes, Tyranni). Bull, Univ. Neb. State Mus. 8(3):209-15.
- Ball, H.J. 1968. A five-year study of potential western corn rootworm resistance to Diazinon and Phorate in Nebraska. J. Econ. Entomol. 61(2):496-8.
- Calkins, C.O. & G.R. Manglitz. 1968. Seasonal changes in daily activity periods of the sweetclover weevil. J. Econ. Entomol. 61(2):391-4.
- Helms, T.J. 1968. Anatomy of the alimentary canal of Empoasca fabae. Ann. Entomol. Soc. Amer. 61(6):1604-6.
- Helms, T.J., E.S. Raun, G.R. Manglitz. 1968. Sandhills white grubs - a grass pest. Nebr. Agr. Exp. Sta. Quarterly. 15(3):13-14.
- Howe, E.C. & R.E. Roselle. 1968. Systemic insecticides can end cattle grub problems. Nebr. Agr. Exp. Sta. Quarterly. 15(3):22-23.
- Kindler, S.D., G.R. Manglitz and J.M. Schalk. 1968. Insecticides for control of insects attacking alfalfa seed in eastern Nebraska. J. Econ. Entomol. 61(6):1636-39.
- Kindler, S.D. and R. Staples. 1968. Lack of cytoplasmic inheritance of alfalfa resistance to the spotted alfalfa aphid. J. Econ. Entomol. 61(5):1455-56.
- Kishaba, A.N. & G.R. Manglitz. 1968. Substances from alfalfa biologically active against the spotted alfalfa aphid. USDA-ARS 33-126. 12pp.
- Manglitz, G.R. and H.J. Gorz. 1968. Inheritance of resistance in sweet-clover to the sweetclover aphid. J. Econ. Entomol. 61(1):90-3.

- Orwig, K.R. 1968. The genera and species of the feather mite subfamily except Trouessartra (Acarina:Proctophyllodidae). Univ. of Nebr. State Museum. 8(1):1-187.
- Peterson, P.C. and W.T. Atyeo. 1968. New genera related to the genus Brephosceles Hull, 1934 (Acarina:Proctophyllodidae). Bull. Univ. Neb. State Mus. 8(4):217-36.
- Pruess, K.P., G.L. Weekman and B.R. Somerhalder. 1968. Western corn rootworm egg distribution and adult emergence under two corn tillage systems. 1968. J. Econ. Entomol. 61(5):1424-27.
- Raun, E.S., R.E. Hill, D.L. Keith. 1968. Western bean cutworm - new threat to Nebraska corn. Nebr. Agr. Exp. Sta. Quarterly. 14(4):16-17.
- Rhine, R.J. and R. Staples. 1968. Effect of high-amylose field corn on larv growth and survival of five species of stored grain insects. J. Econ. Entomol. 61(1):280-2.
- Ribble, D.W. 1968. Revisions of two subgenera of Andrena:Micrandrena Ashmead and Derandrena, new subgenus (Hymenoptera:Apoidea). Bull. Univ. Nebr. State Museum. 8(5):237-93.
- Roselle, R., L.W. Andersen, A.F. Hagen, K.P. Pruess. 1968. Insects through the crystal ball. Nebr. Agr. Exp. Sta. Quarterly 14(4):18-21.
- Staples, R. 1968. Cross protection between a plant virus and potato psyllid yellows. J. Econ. Entomol. 61(5):1378-80.
- Staples, R., S.D. Kindler and B.H. Kantack. 1968. Control of the corn earworm (Heliothis zea Bodie) on sweet corn in eastern Nebraska. J. Econ. Entomol. 61(3):774-6.

1969

- Akeson, W.R., G.L. Beland, F.A. Haskins and H.J. Gorz. 1969. Influence of developmental stage of Melilotus infesta leaves on resistance to feeding by the sweetclover weevil. Crop Sci. 9:667-9.
- Akeson, W.R., G.L. Beland and G.R. Manglitz. 1969. Nitrate as a deterrent to feeding by the sweetclover weevil. J. Econ. Entomol. 62:1169-72.
- Anderson, L.W. 1969. Infrared spots trouble before you can see it. Nebr. Agr. Exp. Sta. Quarterly 16(2):4-6.
- Anderson, L.W., K.P. Pruess and A.F. Hagen. 1969. Pale western cutworm to strike again. Nebr. Agr. Exp. Sta. Quarterly 15(4):18-19.
- Ball, H.J. 1969. Diurnal rhythm of sensitivity to Diazinon in the western corn rootworm. J. Econ. Entomol. 62(5):1097-98.
- Ball, H.J. 1969. Corn rootworm watch pays off. Nebr. Agr. Exp. Sta. Quarterly. 16(1):12-13.
- Ball, H.J. 1969. Topical toxicity of insecticides to Diabrotica virgifera LeConte adults. J. Econ. Entomol. 62(5):1172-74.

- Berberet, R.C. and T.J. Helms. 1969. Two Eugregarine, Gregarina sp. and Actinocephalus sp. associated with Phyllophaga anxia as observed in histological sections. J. Insect Path. 14(3):395-401.
- Berberet, R.C. and P.L. Landers. 1969. Correlation of cellular activity in Weismann's ring with moulting cycles in larvae of Musca autumnalis. Ann. Entomol. Soc. Amer. 62(2):446-7.
- Calkins, C.O. 1969. Effect of temperature, light and date of collection on the feeding rate of the sweetclover weevil. J. Econ. Entomol. 62(1):169-171.
- Jones, C.M. 1969. Biology of the face fly: migration of larvae. J. Econ. Entomol. 62(1):255-6.
- Kadoun, A.M. 1969. Effect of radiofrequency electric field treatment on protein metabolism in yellow mealworm larvae. J. Econ. Entomol. 62(1):220-3.
- Kadoun, A.M. 1969. Electrophoretic studies of serum proteins obtained from radio-frequency-treated yellow mealworm larvae. J. Econ. Entomol. 62(3):745-6.
- Kantack, B.H. and R. Staples. 1969. The biology and ecology of Trogoderma glabrum (Herbst) in stored grains. Neb. Agr. Exp. Sta. Res. Bull. 323. 24pp.
- Keith, D.L., L.W. Anderson, R.E. Roselle and R. Staples. 1969. The greenbug - a new pest of Nebraska sorghums. Neb. Agr. Exp. Sta. Quarterly. 16(2):17-20.
- Kindler, S.D. and R. Staples. 1969. Behavior of the spotted alfalfa aphid on resistant and susceptible alfalfas. J. Econ. Entomol. 62(2):474-8.
- Lawson, D.E. and H.J. Ball. 1969. Effects of Metopa on gametogenesis and embryogenesis in the large milkweed bug, Oncopeltus fasciatus (Dallas). Neb. Agr. Exp. Sta. Res. Bull. 234. 83pp.
- Mulkern, G.B., K.P. Pruess, H. Knutson, A.F. Hagen, J.B. Campbell, J.D. Lambley. 1969. Food habits and preferences of grassland grasshoppers of the North Central Great Plains. N. Dak. Agr. Exp. Sta. Bull. 481. 32pp.
- Munson, J.D. and R.E. Roselle. 1969. Corn rootworms - 1968 research results and 1969 recommendations. Neb. Agr. Exp. Sta. Quarterly. 16:14-15.
- Munson, J.D., D.L. Keith, J.J. Tollefson and A.F. Hagen. 1969. Western bean cutworms on corn - biology and control. Neb. Agr. Exp. Sta. Quarterly. 16:6-9.
- Pruess, K.P. 1969. Food preferences as a factor in distribution and abundance of Phoetaliotes nebrascensis (Orthoptera:Acrididae). Ann. Entomol. Soc. Amer. 62(2):323-7.

- Ratcliffe, B.C. and R.J. Luedtke, 1969. A comparison of Silphids taken from covered and uncovered carrion (Coleoptera:Silphidae). Coleopt. Bull. 23(4):103-5.
- Schalk, J.M., S.D. Kindler and G.R. Manglitz. 1969. Temperature and the preference of the spotted alfalfa aphid for resistant and susceptible alfalfa plants. J. Econ. Entomol. 62(5):1000-03.
- Schalk, J.M. and G.R. Manglitz. 1969. Migration of an anholocyclic strain of the spotted alfalfa aphid into Nebraska. J. Econ. Entomol. 62:946-7
- Urbauer, D. 1969. Nebraska poisonous spiders. Neb. Agr. Exp. Sta. Quarterly 16(2): 13-14.

1970

- Akeson, W.R., F.A. Haskins, H.J. Gorz and G.R. Manglitz. 1970. Feeding response of the sweetclover weevil to various sugars and related compounds. J. Econ. Entomol. 63(4):1079-80.
- Anderson, L.W., K.P. Pruess and A.F. Hagen. 1970. Pale western cutworm - record infestation indicated. Neb. Agr. Exp. Sta. Quarterly. 16(4):12-13.
- Beland, G.L., W.R. Akeson and G.R. Manglitz. 1970. Influence of plant maturity and plant part on nitrate content of the sweetclover weevil-resistant species, Melilotus infesta. J. Econ. Entomol. 63(4):1037-39.
- Berberet, R.C. and T.J. Helms. 1970. Notes on the biology of Tiphia berbereti, (Hymenoptera: Tiphidae), a parasite of larval Phyllophaga anxia. Ann. Entomol. Soc. Amer. 63(2):471-73.
- Burnside, O.C., J.D. Furrer and R.E. Roselle. 1970. Pesticides - heroes or villians. Neb. Agr. Exp. Sta. Quarterly. 17(2):4-7.
- Campbell, J.B. 1970. Serological comparisons of geographically different populations of three rangeland grasshopper species. J. Kan. Entomol. Soc. 43(4):474-6.
- Hagen, A.F. 1970. An annotated list of grasshoppers (Orthoptera:Acrididae) from the eleven panhandle counties of Nebraska. Neb. Agr. Exp. Sta. Res. Bull. 238. 60pp.
- Jansen, W.P. and R. Staples. 1970. Effect of cowpeas and soybeans as source plants or test plants of cowpea mosaic virus on vector efficiency and the retention of infectivity of the bean leaf beetle and the spotted cucumber beetle. Plant Disease Reporter 54:1053-54.
- Jansen, W.P. and R. Staples. 1970. Transmission of cowpea mosaic virus by the Mexican bean beetle. J. Econ. Entomol. 63(5):1919-20.
- Kehr, W.R., R.L. Ogden, and S.D. Kindler. 1970. Diallel analyses of potato Leafhopper injury to alfalfa. Crop Sci. 10: 584-6.

- Kindler, S.D. and W.R. Kehr. 1970. Field tests of alfalfa selected for resistance to potato leafhopper in the greenhouse. *J. Econ. Entomol.* 63(5):1464-67.
- Kindler, S.D., W.R. Kehr, and R.L. Ogden. 1970. It pays to plant Dawson alfalfa. *Neb. Agr. Exp. Sta. Quarterly.* 17(2):14-16.
- Kindler, S.D. and R. Staples. 1970. Nutrients and the reaction of two alfalfa clones to the spotted alfalfa aphid. *J. Econ. Entomol.* 63(3):938-40.
- Kindler, S.D. and R. Staples. 1970. The influence of fluctuating and constant temperatures, photoperiod, and soil moisture on the resistance of alfalfa to the spotted alfalfa aphid. *J. Econ. Entomol.* 63(4):1198-1201.
- Manglitz, G.R. and J.M. Schalk. 1970. Occurrence and hosts of Aphelinus semiflavus Howard in Nebraska. (Hymenoptera:Eulophidae). *J. Kan. Entomol. Soc.* 43:309-14
- Munson, J.D. and T.J. Helms. 1970. Field evaluation of a nematode (DD-136) for control of corn rootworm larvae. *Proc. North Cent. Branch Entomol. Soc. Amer.* 25(2):97-9.
- Munson, J.D. and R.E. Hill. 1970. Insecticides applied at planting time for control of corn rootworm larvae in Nebraska. *J. Econ. Entomol.* 63(5):1614-17.
- Munson, J.D. and R.E. Roselle. 1970. Corn rootworms - 1969 research results, 1970 control recommendations. *Neb. Agr. Exp. Sta. Quarterly.* 16(4):10-11.
- Pruess, K.P. 1970. Food ingestion and utilization by two populations of a grasshopper Ageneotettix deorum. *J. Kan. Entomol. Soc.* 43(4):471-3.
- Pruess, Neva. 1970. Dragonfly migrations observed in Nebraska in 1969. *Neb. Bird Rev.* 38(2):_____ - _____.
- Ratcliffe, B.C. 1970. Collecting slime flux feeding Coleoptera in Japan. *Entomol. News* 81:255-6.
- Ratcliffe, B.C. 1970. Scarabs. *Univ. Neb. State Mus., Notes* 42:1-4.
- Schalk, J.M., G.R. Manglitz and H.J. Stevens, Jr. 1970. Sweetclover weevil control. *J. Econ. Entomol.* 63(4):1356-57.
- Short, D. E. 1970. Corn rootworm emergence sites in relation to the corn plant. *J. Econ. Entomol.* 63(3):1007.
- Short, D.E. and R.J. Luedtke. 1970. Larval migration of the western corn rootworm. *J. Econ. Entomol.* 63(1):325-6
- Staples, R., W.P. Jansen and L.W. Anderson. 1970. Biology and relationship of the leafhopper, Aceratagallia calcaris, to yellow vein disease of sugar beets. *J. Econ. Entomol.* 63(2):460-3.

1971

- Ball, H.J. 1971. Laboratory observations on the daily oviposition cycle in the western corn rootworm. *J. Econ. Entomol.* 64(5):1319-20.
- Ball, H.J. 1971. The receptor site for photic entrainment of circadian activity rhythms in the cockroach Periplaneta americana. *Ann. Entomol. Soc. Amer.* 64(5):1010-15.
- Campbell, J.B. and J.F. Hermanussen. 1971. Efficacy of insecticides and methods of insecticidal application for control of stable flies in Nebraska. *J. Econ. Entomol.* 64(5):1188-90.
- Hill, R.E. and D.L. Keith. 1971. Corn borers - population fluctuations and control. *Neb. Agr. Exp. Sta. Quarterly.* 18(1):16-20.
- Hill, R.E. and D.L. Keith. 1971. Controlling corn rootworm by killing the beetles. *Neb. Agr. Exp. Sta. Quarterly.* 18(2):7-8.
- Jansen, W.P. and R. Staples. 1971. Specificity of transmission of cowpea mosaic virus by species within the subfamily Galerucinae, family Chrysomelidae. *J. Econ. Entomol.* 64(2):365-7.
- Kehr, W.R. and G.R. Manglitz. 1971. The alfalfa weevil - a costly pest. *Neb. Agr. Exp. Sta. Quarterly.* 18(2):9-11.
- Kehr, W.R. and G.R. Manglitz. 1971. The evil weevil. *Agrichemical Age* 15: 8-10.
- Kindler, S.D., W.R. Kehr and R.L. Ogden. 1971. Influence of pea aphids and spotted alfalfa aphids on the stand, yield of dry matter, and chemical composition of resistant and susceptible varieties of alfalfa. *J. Econ. Entomol.* 64(3):653-7.
- Manglitz, G.R., H.J. Gorz and F.A. Haskins. 1971. Resistance to the sweetclover root borer as influenced by species and coumarin content. *ARS-ERD-USDA Special Rep. X-324.*
- Manglitz, G.R., H.J. Gorz and H.J. Stevens, Jr. 1971. Biology of the sweetclover rootborer. *J. Econ. Entomol.* 64(5):1154-58.
- Munson, J.D. 1971. Insecticide-Starter Fertilizer Mix controls rootworms - placement, kind of insecticide important. *Neb. Agr. Exp. Sta. Quarterly.* 18(3):26-27.
- Munson, J.D. and R.E. Roselle. 1971. Corn rootworm - 1970 research and 1971 control recommendations. *Neb. Agr. Exp. Sta. Quarterly.* 17(4):7-8.
- Oseto, C.Y. and T.J. Helms. 1971. Embryonic and postparturient reproductive system development in Schizaphis graminum (Homoptera):Aphididae). *Ann. Entomol. Soc. Amer.* 64(3):603-8.
- Park, C.K. and W.T. Atyeo. 1971. A generic revision of the Pterodectinae, a new subfamily of feather mites (Sarcoptiformes:Analogideae). *Bull. Univ. Neb. State Mus.* 9(3):39-88.

- Peterson, P.C. 1971. A revision of the feather mite genus Brephoscele (Proctophyllodidae:Aldoptinae). Bull. Univ. Neb. State Mus. 9(4):89-172.
- Pruess, K.P. and N.C. Pruess. 1971. Telescopic observation of the moon as a means for observing migration of the army cutworm, Chorizagrotis auxiliaris. Ecology 52(6):999-1007.
- Rai, P.S., H.J. Ball, S.O. Nelson and L.E. Stetson. 1971. Morphological changes in adult Tenebrio molitor (Coleoptera:Tenebrionidae) resulting from radiofrequency or heat treatment of larvae and pupae. Ann. Entomol. Soc. Amer. 64(5):1116-21.
- Raun, E.S. and J.B. Campbell. 1971. Fly control with aircraft. Neb. Agr. Exp. Sta. Quarterly. 17 (4):26-27.
- Schalk, J.M. 1971. Comparison of biology of Anholocyclic and holocyclic strains of the spotted alfalfa aphid in Nebraska. J. Econ. Entomol. 64(6):1549-50.
- Staples, R., L.W. Andersen and J.L. Weihing. 1971. Wheat streak mosaic. Neb. Agr. Exp. Sta. Quarterly. 17(4):4-7.
- Wolfe, C.W., W.L. Baxter and J.D. Munson. 1971. Effects of Parathion on young pheasants. Neb. Agr. Exp. Sta. Quarterly. 18(2):4-6.

1972

- App, B.A. and G.R. Manglitz. 1972. Insects and related pests. p. 527-554 in Alfalfa Science and Technology. Amer. Soc. Agron., Monogr. No. 15
- Ball, H.J. 1972. A system for recording activity of small insects. J. Econ. Entomol. 65(1):129-32.
- Ball, H.J. 1972. Photic entrainment of circadian activity rhythms by illumination in the cockroach Blaberus craniifer. J. Insect Physiol. 18:2449-55.
- Berberet, R.C. and T.J. Helms. 1972. Comparative anatomy and histology of selected systems in larval and adult Phyllophaga anxia (Coleoptera: Scarabaeidae). Ann. Entomol. Soc. Amer. 65(5):1026-53.
- Chaudhury, M.F.B. and H.J. Ball. 1972. A sex pheromone of the female face fly, Musca autumnalis and its role in sexual behavior. Ann. Entomol. Soc. Amer. 65(3):607-12.
- Manglitz, G.R. and H.J. Gorz. 1972. A review of insect resistance in the clovers (Trifolium spp.). Bull. Entomol. Soc. Amer. 18(4):176-8.
- Neiman, E.L. & G.R. Manglitz. 1972. The biology and ecology of the brome grass seed midge in Nebraska. Neb. Agr. Exp. Sta. Res. Bull. 525. 23pp.
- Oseto, C.Y. and T.J. Helms. 1972. Early embryology and histology of Schizaphis graminum (Homoptera (Homoptera):Aphididae). Ann. Entomol. Soc. Amer. 65(3):622-5.

- Rai, P.S., H.J. Ball, S.O. Nelson, and L.E. Stetson. 1972. Lethal effects of radiofrequency energy on eggs of Tenebrio molitor (Coleoptera: Tenebrionidae). *Ann. Entomol. Soc. Amer.* 65(4):807-10.
- Ratcliffe, B.C. 1972. The natural history of Necrodes surinamensis (Fabr.) (Coleoptera:Silphidae). *Trans. Amer. Entomol. Soc.* 98:359-410.
- Schalk, J.M. and G.R. Manglitz. 1972. Influence of light and temperature on the production of sexuales in Therioaphis maculata and T. riehi. *Environ. Entomol.* 1(2):209-13.
- Short, D.E. and R.E. Hill. 1972. Adult emergence, ovarian development and oviposition sequence of the western corn rootworm in Nebraska. *J. Econ. Entomol.* 65(3):685-9.
- Sorensen, E., C. Wilson, and G.R. Manglitz. 1972. Breeding for insect resistance. p. 371-390. in C.H. Hanson, ed. *Alfalfa Science and Technology*. Amer. Soc. Agron. Mongr. No. 15.
- Tarnopol, J.H. and H.J. Ball. 1972. A survey of some common midwestern plants for juvenile hormone activity. *J. Econ. Entomol.* 65(4):980-2.

1973

- Ball, H.J. 1973. Western corn rootworm: A ten year study of potential resistance to Diazinon and Phorate in Nebraska. *J. Econ. Entomol.* 66(5):1015-18.
- Ball, H.J. and M.F.B. Chaudhury. 1973. A sex attractant of the western corn rootworm. *J. Econ. Entomol.* 66(5):1051-53.
- Ball, H.J. and M.F.B. Chaudhury. 1973. Photic entrainment of circadian rhythms by illumination of implanted brain tissues in the cockroach Blaberus craniifer. *J. Insect Physiol.* 19:823-30.
- Beland, G.L., F.A. Haskins, G.R. Manglitz, and H.J. Gorz. 1973. Sweet-clover weevil: Adenosine as a feeding stimulant. *J. Econ. Entomol.* 66(5):1037-39.
- Bishop, E.J., T.J. Helms and K.A. Ludwig. 1973. Control of bagworms with Bacillus thuringiensis. *J. Econ. Entomol.* 66:675-6.
- Campbell, J.B. and J.E. Wright. 1973. Hormones for fly control. *Neb. Agr. Exp. Sta. Quarterly.* 20(2):23.
- Campbell, J.B., W. Woods, A.F. Hagen and E.C. Howe. 1973. Cattle grub insecticide efficacy and effects on weight gain performance on feeder calves in Nebraska. *J. Econ. Entomol.* 66(2):429-32.
- Chaudhury, M.F.B. and H.J. Ball. 1973. The effect of age, nutritional factors and gonadal development on the mating behavior of the face fly, Musca autumnalis. *J. Insect. Physiol.* 19:57-64.
- Hill, R.E., H.C. Chiang, A.J. Keaster, W.B. Showers, and G.L. Reed. 1973. Seasonal abundance of the European corn borer, Ostrinia nubilalis (Hbn.) within the north central United States. *Neb. Agr. Exp. Sta. Res. Bull.* 255. 82pp.

- Kindler, S.D., W.R. Kehr, R.L. Ogden and J.M. Schalk. 1973. Effect of potato leafhopper injury on yield and quality of resistant and susceptible alfalfa clones. *J. Econ. Entomol.* 66:1298-1302.
- Manglitz, G.R., J.M. Schalk, L.W. Andersen and K.P. Pruess. 1973. Army cutworm control on alfalfa in Nebraska. *J. Econ. Entomol.* 66(1):299.
- Neiman, E.L. and G.R. Manglitz. 1973. Bromegrass seed midge: Relationship of infestation and the length of palea of smooth bromegrass. *J. Econ. Entomol.* 66(6):1329-30.
- Pruess, K.P. 1973. Postage stamps showing bees and hives. *Bee World* 54(2):53-6.
- Urbauer, D. and K.P. Pruess. 1973. Drift of terrestrial arthropods in an irrigation canal following a wide-area application of ULV Malathion. *J. Econ. Entomol.* 66(6):1267-8.
- Wedderburn, R.N., J.D. Munson, and J.L. Wedberg. 1973. Field trials to control European corn borer with insecticides. *J. Econ. Entomol.* 66(1):253-254.
- Wright, J.E., J.B. Campbell and P. Hester. 1973. Hormones for control of livestock arthropods: Evaluation of two juvenile hormone analogues applied to breeding materials in small plot tests in Nebraska and Florida for control of the stable fly. *Environ. Entomol.* 2(1):69-72.

1974

- Campbell, J.B. and J.F. Hermanussen. 1974. Philonthus theveneti: Life history and predatory habits against stable flies, house flies and face flies under laboratory conditions. *Environ. Entomol.* 3:356-8.
- Campbell, J.B., R. Gene White, H. Stokely. 1974. Controlling grubs on cattle. *Nebr. Agr. Exp. Sta. Farm Ranch and Home Quart.* 21(2):11.
- Chaudhury, M.F.B. and H.J. Ball. 1974. The effect of age and the time of day on sex attraction and mating of the face fly, Musca autumnalis. *J. Insect Physiol.* 20:2079-85.
- Gary, W., D. Keith, A. Martin. 1974. Scientists and scouts help growers with Pest Management. *Nebr. Agr. Exp. Sta. Farm, Ranch, Home Quart.* 21(3):12-14.
- Gorz, H.J., G.R. Manglitz and F.A. Haskins. 1974. Resistance of red clover to the clover leaf weevil. *Proc. 17th Forage Insect Res. Conf.* P. 23.
- Hagen, A.F. 1974. Mexican bean beetle control with systemic insecticides on dry beans in western Nebraska. *J. Econ. Entomol.* 65:137.
- Hill, R.E. and Z B Mayo. 1974. Trap-corn to control corn rootworms. *J. Econ. Entomol.* 65(6):748-50.
- Keith, D.L. & W. Gary. 1974. Nebraska Pilot Pest Management project on insects and weeds in corn. *Proc. North Cent. Branch, Entomol. Soc. Amer.*, 29:46-8.

- Kindler, S.D. 1974. Sampling techniques for the eggs, larvae and adults of the bluegrass billbug in Kentucky bluegrass. Proc. North Cent. Branch, Entomol. Soc. Amer. 29:171-2.
- Kindler, S.D. and E.J. Kinbacher. 1974. Host range of bluegrass billbug. Proc. 17th Forage Insect Res. Conf. p. 25.
- Kindler, S.D. and P.T. Nordquist. 1974. Researchers are developing Sorghum that resists greenbugs. Nebr. Agr. Exp. Sta., Farm, Ranch, Home Quart. 21(2):8-9.
- Koinzan, S.D. and K.P. Pruess. 1974. Effects of a wide-area application of ULV Malathion on leafhoppers in alfalfa. J. Econ. Entomol. 68(2):267-8.
- Manglitz, G.R. 1974. The eastern and western strains of the alfalfa weevil in Nebraska. Proc. North Cent. Branch, Entomol. Soc. Amer. 29:168-9.
- Manglitz, R.R. and H.J. Gorz. 1974. Additional hosts of the yellow clover aphid complex. J. Econ. Entomol. 65:453-4.
- Manglitz, G.R., H.J. Gorz, and F.A. Haskins. 1974. Resistance in sweetclover to the sweetclover root borer. USDA. ARS-NC-18. 3 pp.
- Manglitz, G.R. and L.M. Russell. 1974. Cross matings between Therioaphis maculata (Buckton) and T. trifolii (Monell) (Hemiptera : Homoptera: Aphididae) and their implications in regard to the taxonomic status of the insects. Proc. Entomol. Soc. Wash. 76(3):290-6.
- Pruess, K.P. 1974. Modeling economic thresholds for green cloverworm on soybean. Proc. North Cent. Branch, Entomol. Soc. Amer. 29:69-74.
- Pruess, K.P. 1974. Tarnished and alfalfa plant bugs in alfalfa: Population suppression with ULV Malathion. J. Econ. Entomol. 67:525-8.
- Pruess, K.P., J.F. Witkowski and E.S. Raun. 1974. Population suppression of western corn rootworm by adult control with ULV Malathion. J. Econ. Entomol. 67:651-5.
- Rai, P.S., H.J. Ball, S.O. Nelson and L.E. Stetson. 1974. Cytopathological effects of radiofrequency electric fields on reproductive tissue of Tenebrio molitor. (Coleoptera:Tenebrionidae). Ann. Entomol. Soc. Amer. 67(4):687-90.
- Ratcliffe, B.C. 1974. New distribution records for eleven species of Phyllophaga (Coleoptera:Scarabaeidae). Entomol. News. 85(3):72-5.
- Woolsey, G. 1974. A county agent's views on pest management. Proc. North Cent. Branch, Entomol. Soc. Amer. 29:39-40.

1975

- Ball, H.J., C.A. Staetz and G.L. Rolofson. 1975. Negative phototactic activity used to determine larval toxicity of insecticides to Diabrotica virgifera. J. Econ. Entomol. 68:293-4.

- Bell, J.H. 1975. Keeping the gypsy moth out of Nebraska. Nebr. Agr. Exp. Sta. Farm, Ranch & Home Quarterly. 22(3):22-23.
- Fagerstrom, J.A. and B.C. Ratcliffe. 1975. Synopsis of recent burrowing insects as analogues of non-marine trace fossils. Annu. Meet. Geol. Soc. Amer. Abs. with Programs 7(7):1070-71.
- Gorz, H.J., G.R. Manglitz, and F.A. Haskins. 1975. Resistance of red clover to the clover leaf weevil. Crop Sci. 15:279-80.
- Hill, R.E. 1975. Mating, oviposition patterns, fecundity and longevity of the western corn rootworm. J. Econ. Entomol. 68(3):311-5.
- Keith, D.L., W.J. Gary, and A. Martin. 1975. Insecticide use patterns by pest management cooperators and non-cooperators in south central Nebraska. Proc. North Cent. Branch, Entomol. Soc. Amer. 30:65-7.
- Kindler, S.D. and E.J. Kinbacher. 1975. Differential reaction of Kentucky bluegrass cultivars to the bluegrass billbug Splenophorus pervilus Gyllenhal. Crop Sci. 15:873-4.
- Kindler, S.D. and J.M. Schalk. 1975. Frequency of alfalfa plants with combined resistance to the pea aphid and spotted alfalfa aphid in aphid-resistant cultivars. J. Econ. Entomol. 68:716-8.
- Ludwig, K.A. and R.E. Hill. 1975. Comparison of gut contents of adult western and northern corn rootworms in northeast Nebraska. Environ. Entomol. 4(3):435-8.
- Mayo, Z B 1975. A five-year comparison of insecticide applied to control larvae of western and northern corn rootworms. Nebr. Agr. Exp. Sta. Bull. 535. 15pp.
- Oseto, C.Y. and Z B Mayo. 1975. A new species of Calogyphus (Acarina: Acaridae) associated with Phyllophaga anxia (Coleoptera:Scarabaeidae). J. Kan. Entomol. Soc. 48:212-23.
- Rai, P.S., H.J. Ball, S.O. Nelson and L.E. Stetson. 1975. Effects of radiofrequency electrical treatment on the fecundity of Tenebrio molitor L. (Coleoptera:Tenebrionidae). Ann. Entomol. Soc. Amer. 68:524-5.
- Showers, W.B., H.C. Chiang, A.J. Keaster, R.E. Hill, G.L. Reed, A.N. Sparks, and G.J. Musick. 1975. Ecotypes of the European Corn Borer in North America. Environ. Entomol. 4(5):753-60.
- Wedberg, J.L., J.B. Campbell, and T.J. Helms. 1975. Bionomics of insects associated with corn in the Nebraska sandhills. Nebr. Agr. Exp. Sta. Res. Bull. 274. 30pp.

1976:

- Hagen, A.F. 1976. A fourteen-year summary of light trap catches of the western bean cutworm in Nebraska Loxagrotis albicosta (Smith) (Lepidoptera:Noctuidae). J. Kan. Entomol. Soc. 49:537-540.

- Hagen, A.F. 1976. Crested wheatgrass, L. hisperius control, 1975. Insecticide and Acaricide Tests. 1:102.
- Kofoed, K.D., W.M. Ross, H.L. Hackerott, T.L. Harvey, and S.D. Kindler. 1976. Evaluation of greenbug resistance in S₂ progenies of grain sorghum. Crop Sci. 16:265-7.
- Manglitz, G.R. 1976. Alfalfa weevil (Coleoptera:Curculionidae): Late season adults in a harvested and an unharvested field. J. Kan. Entomol. Soc. 49:527-530.
- Manglitz, G.R., H.J. Gorz, W.R. Akeson, and G.L. Beland. 1976. Interactions between insects and chemical components of sweetclover. J. Environ. Qual. 5(4):347-52.
- Mayo, Z B 1976. Aerial suppression of rootworm adults for larval control. Univ. Nebr. Dept. Entomol. Report No. 2. 12pp.
- Mayo, Z B 1976. Emergency post-planting applications of insecticides to control larvae of the western and northern corn rootworm in Nebraska. J. Econ. Entomol. 65:600-2.
- Mayo, Z B 1976. The corn rootworm situation in Nebraska (1971-1975). Univ. Nebr. Dept. Entomol. Report No. 1. 12pp.
- Mayo, Z B, L.L. Peters, J.B. Campbell. 1976. Evaluation of insecticides to control larvae of the corn rootworm in Nebraska; 1975. Insecticide and Acaricide Tests 1:82-3.
- Oseto, C.Y. and T.J. Helms. 1976. Anatomy of the adults of Loxagrotis albicosta. Univ. Nebr. Studies:New Series No. 52. Univ. Nebr. Press, Lincoln. 127pp.
- Pike, K.S., R.L. Rivers, C.Y. Oseto and Z B Mayo. 1976. A world bibliography of the genus Phyllophaga. Neb. Agr. Exp. Sta. Misc. Publ. 31. 21pp.
- Pike, K.S. and Z B Mayo. 1976. Wireworm control in field corn, Pierce Co., Nebraska 1975. Insecticide and Acaricide Tests. 1:85.
- Pike, K.S., R.L. Rivers, B.C. Ratcliffe, C.Y. Oseto, and Z B Mayo. 1976. A world bibliography of the genus Cyclocephala (Coleoptera: Scarabaeidae). Nebr. Agr. Exp. Sta. Misc. Publ. 32. 36pp.
- Peters, L.L. 1976. Alfalfa weevil and variegated cutworm control on alfalfa in Nebraska, 1975. Insecticides and Acaricide Tests. 1:80-1.
- Pruess, K.P. and R.W. Whitmore. 1976. A D-Vac calibration technique. J. Econ. Entomol. 69:51-2.
- Ratcliffe, B.C. 1976. A revision of the genus Strategus (Coleoptera: Scarabaeidae). Bull. Univ. Neb. State Mus. 10(3):93-204.
- Witkowski, J.F. 1976. Evaluation of five insecticides to control a natural infestation of first brood larvae of European Corn Borer in Northeast Nebraska, 1975. Insecticide and Acaricide Tests. 1:90-1.

THESES

1968

- Beland, Gary L. 1968. Effect of nitrate distribution in Melilotus infesta Guss. on resistance to the sweetclover weevil. MS Thesis. 58pp. Advisor: G. R. Manglitz
- Cates, Merrill D. 1968. Behavioral and physiological aspects of mating and oviposition by adult western corn rootworm, Diabrotica virgifera (LeConte). PhD Thesis. 91pp. Advisor: H. J. Ball
- Neiman, Elray L. 1968. The biology and ecology of a bromegrass seed midge, Stenodiplosis bromicola Marikovskiy and Agafonova. MS Thesis. 59pp. Advisor: G. R. Manglitz
- Peterson, Paul C. 1968. A revision of the feather mite genus Brephosceles (Proctophyllodidae:Alloptinae). PhD Thesis. 199pp. Advisor: R. E. Hill (W. T. Atyeo)

1969

- Fardal, John E. 1969. Combination control for European corn borer and corn rootworm in Eastern Nebraska. MS Thesis. 42pp. Advisor: R. E. Hill
- Lawson, Donald E. 1969. The effects of Metepa on gametogenesis and embryogenesis in the large milkweed bug, Oncopeltus fasciatus (Dallas). PhD Thesis. 115pp. Advisor: H. J. Ball
- Park, Chong K. 1969. The genera and species of feather mites related to the genus Pterodectes (Proctophyllodidae:Proctophyllodinae). PhD Thesis. 292pp. Advisor: R. E. Hill (W. T. Atyeo)
- Tarnopol, Joseph H. 1969. A survey of some common midwestern plants for juvenile hormone activity. MS Thesis. 34pp. Advisor: H. J. Ball

1970

- Beltran, Antonio. 1970. Integrated control: The effect of malathion on two species of alfalfa aphids and their predators. MS Thesis. 100pp. Advisor: K. P. Pruess
- Jansen, William P. 1970. Relationships between squash mosaic-like viruses and vectors in the subfamily Galerucinae (Coleoptera, Chrysomelidae). PhD Thesis. 74pp. Advisor: R. Staples
- Munson, James D. 1970. Insecticidal control of corn rootworm larvae in Nebraska. PhD Thesis. 90pp. Advisor: R. E. Hill
- Oseto, Christian Y. 1970. Embryonic and postparturient reproductive-system development in Schizaphis graminum (Rodani) (Homoptera:Aphididae). MS Thesis. 52pp. Advisor: T. J. Helms

- Rai, Patte Shivarama. 1970. An investigation of the morphological and reproductive changes by exposure of the yellow mealworm, Tenebrio molitor L., to radiofrequency energy. PhD Thesis. 178pp.
Advisor: H. J. Ball
- Ratcliffe, Brett C. 1970. The natural history of Necrodes surinamensis (Fabr.) (Coleoptera:Silphidae). MS Thesis. 61pp.
Advisor: K. P. Pruess
- Schalk, James M. 1970. Biological and environmental factors influencing the production of sexuales of Therioaphis maculata (Buckton) and T. riemmi (Borner). PhD Thesis. 71pp.
Advisor: G. R. Manglitz
- Short, Donald E. 1970. The relationship of oogenesis, ovarian development and oviposition to corn rootworm control. PhD Thesis. 73pp.
Advisor: R. E. Hill
- Witkowski, John F. 1970. The effect of a wide area, aerial application of ultra-low-volume (ULV) malathion on the western corn rootworm, Diabrotica virgifera (LeConte). MS Thesis. 19pp.
Advisor: K. P. Pruess
- 1971
- Andersen, Lloyd W. 1971. Control of wheat streak mosaic with chemicals in relation to the epidemiology of the disease. PhD Thesis. 101pp.
Advisor: R. Staples
- Beberet, Richard C. 1971. Comparative anatomy of selected systems in larval and adult Phyllophaga anxia (LeConte). PhD Thesis. 102pp.
Advisor: T. J. Helms
- Chaudhury, Muhammad F. B. 1971. The mating behavior of the face fly, Musca autumnalis DeGeer, with special reference to the role of the sex pheromone. PhD Thesis. 75pp. Advisor: H. J. Ball
- Keith, David L. 1971. Comparative biology, morphology, and ecology of the forage and grass loopers, Caenurgina erechtea (Cram.), and C. crassiuscula (Haw.) Lepidoptera). PhD Thesis. 123pp.
Advisor: K. P. Pruess
- Neiman, Elray L. 1971. The identification and characterization of pea aphid biotypes. PhD Thesis. 89pp. Advisor: K. P. Pruess
- Sexson, Gary D. 1971. Control of pine tip moth (Rhyacionia bushnellii) on Ponderosa Pine with systemic insecticides. MS Thesis. 67pp.
Advisor: R. E. Hill
- Skinner, Jasper D. II. 1971. The Holocene Donaciids of Milburn, Nebraska. (Coleoptera:Donaciidae). MS Thesis. 27pp.
Advisor: K. P. Pruess
- Urbauer, Dewey M. 1971. The effect of ULV malathion on spiders in alfalfa. MS Thesis. 26pp. Advisors: K.P. Pruess & E.S. Raun

1972

- Beland, Gary L. 1972. Biochemical nature of sweetclover plant factors influencing feeding preference of the sweetclover weevil. PhD Thesis. 73pp. Advisor: G. R. Manglitz
- Beltran, Antonio. 1972. Effect of photoperiod and temperature on sorghum uptake and greenbug ingestion of isotopically labeled nutrients and ^{14}C on Thimet. PhD Thesis. 146pp. Advisor: K. P. Pruess
- Jha, Mahesh D. 1972. Spermatogenesis in Diabrotica virgifera LeConte, D. longicornis (Say), and D. undecimpunctata howardi Barber (Coleoptera:Chrysomelidae). PhD Thesis. 62pp. Advisor: T. J. Helms
- Peterson, James L. 1972. Biology and drift of aquatic insects in seasonal irrigation waters and their susceptibility to ULV malathion. PhD Thesis. 69pp. Advisor: K. P. Pruess
- Staetz, Charles A. 1972. The effect of age, sex and photoperiod on western corn rootworm sensitivity to Diazinon, Thimet, and Bux^o. MS Thesis. 33pp. Advisor: H. J. Ball
- Wedderburn, Richard N. 1972. Western and northern corn rootworm populations and damage as influenced by cultural practices. PhD Thesis. 97pp. Advisor: K. P. Pruess

1973

- Bishop, Edward J. 1973. Drifting of honey bees, Apis mellifera (L.) (Hymenoptera:Apidae). MS Thesis. 37pp. Advisor: R. E. Hill
- Jess, Marvin L. 1973. A study of the host range of the bluegrass billbug, Sphenophorus parvulus Gyllenhal (Coleoptera:Curculionidae). MS Thesis. 33pp. Advisor: S. D. Kindler
- Ludwig, Kenneth A. 1973. Comparison of gut contents of adult Diabrotica virgifera LeConte and Diabrotica longicornis (Say) (Coleoptera:Chrysomeli). MS Thesis. 46pp. Advisor: R. E. Hill
- Oseto, Christian Y. 1973. Anatomy of the adult western bean cutworm, Loxagrotis albicosta (Smith) (Lepidoptera:Noctuidae). PhD Thesis. 228pp. Advisor: T. J. Helms

1974

- Koinzan, Steven D. 1974. Effects of a wide-area application of ULV malathion on leafhoppers in alfalfa. MS Thesis. 15pp. Advisor: K. P. Pruess
- Skinner, Jasper D. II. Trial and error learning by Musca domestica Linnaeus and Oncopeltus fasciatus (Dallas) in a Y-maze. PhD Thesis. 50pp. Advisor: K. P. Pruess

Wedberg, John L. 1974. Bionomics of insects associated with corn in the Nebraska sandhills. PhD Thesis. 78pp.

Advisors: J. B. Campbell &
T. J. Helms

1975

Beardmore, Bruce W. 1975. Evaluation of western corn rootworm, Diabrotica virgifera LeConte, adult control on an individual field basis as an alternative to the use of soil insecticides in eastern Nebraska. MS Thesis. 52pp.

Advisor: Z. B. Mayo

Ratcliffe, Brett C. 1975. A revision of the genus Strategus (Coleoptera: Scarabaeidae). PhD Thesis. 167pp. Advisor: K. P. Pruess

Staetz, Charles A. 1975. The response of Diabrotica virgifera (LeConte) to antennal stimulation by plant and D. virgifera extracts. PhD Thesis. 106pp.

Advisor: H. J. Ball

Whitmore, Russell. 1975. Seasonal population of leafhoppers and plant-hoppers in eight species of irrigated grasses. MS Thesis. 44pp.

Advisor: K. P. Pruess

1976

Monke, Bruce J. 1976. An evaluation of treatment recommendations for the greenbug, Schizaphis graminum, on susceptible grain sorghum in the Clay County, Nebraska Pest Management project. MS Thesis. 74pp.

Advisor: D. L. Keith

Mueke, Jones M. 1976. Alfalfa insect control with resistant varieties and insecticides. PhD Thesis. 96pp.

Su, Paulina Po-Lun. 1976. Life cycle of Nosema loxagrotidis sp. n. (Microsporida:Nosematidae) and its development in Loxagrotis albicosta (Smith) (Lepidoptera:Noctuidae). MS Thesis. 47pp.

Advisor: T. J. Helms

