

University of Nebraska - Lincoln  
**DigitalCommons@University of Nebraska - Lincoln**

---

Faculty Papers and Publications in Animal Science

Animal Science Department

---

2002

# Rapid communication: Mapping of the $Ca^{2+}$ ATPase of fast twitch 1 skeletal muscle sarcoplasmic reticulum (*ATP2A1*) gene to porcine chromosome 3

Daniel C. Ciobanu

University of Nebraska-Lincoln, [dciobanu2@unl.edu](mailto:dciobanu2@unl.edu)

Y. Ciobanu

Iowa State University

M. F. Rothschild

Iowa State University

Follow this and additional works at: <http://digitalcommons.unl.edu/animalscifacpub>

 Part of the [Genetics and Genomics Commons](#), and the [Meat Science Commons](#)

---

Ciobanu, Daniel C.; Ciobanu, Y.; and Rothschild, M. F., "Rapid communication: Mapping of the  $Ca^{2+}$  ATPase of fast twitch 1 skeletal muscle sarcoplasmic reticulum (*ATP2A1*) gene to porcine chromosome 3" (2002). *Faculty Papers and Publications in Animal Science*. 939. <http://digitalcommons.unl.edu/animalscifacpub/939>

This Article is brought to you for free and open access by the Animal Science Department at DigitalCommons@University of Nebraska - Lincoln. It has been accepted for inclusion in Faculty Papers and Publications in Animal Science by an authorized administrator of DigitalCommons@University of Nebraska - Lincoln.

## Rapid communication: Mapping of the $Ca^{2+}$ ATPase of fast twitch 1 skeletal muscle sarcoplasmic reticulum (ATP2A1) gene to porcine chromosome 3<sup>1</sup>

D. C. Ciobanu, Y. Zhang, and M. F. Rothschild<sup>2</sup>

Department of Animal Science, Iowa State University, Ames 50011

*Locus Name.*  $Ca^{2+}$  ATPase of fast twitch 1 skeletal muscle sarcoplasmic reticulum.

*Species.* *Sus scrofa*.

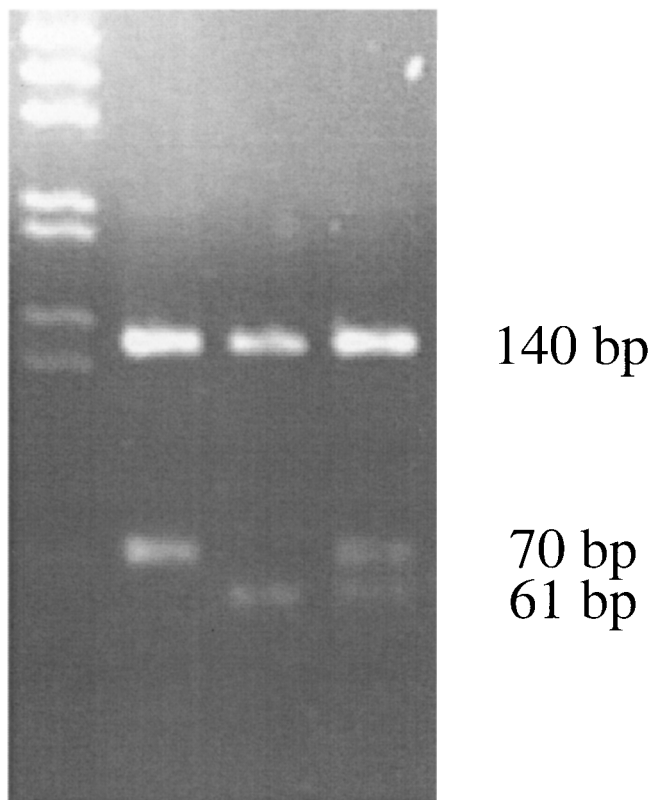
*Locus Symbol.* ATP2A1.

*Source of Primers.* Two sets of PCR primers were designed based on human ATP2A1 sequences (GenBank accession numbers U96773 and U96777) available in the GenBank database. Using pig genomic DNA as a template we used set A primers to amplify approximately 1,100 bp spanning exon 1 to exon 2 and set B primers to amplify 1,200 bp gene segment covering some of exon 8 through part of exon 9. These sequences were deposited in GenBank, accession number AY027797-AY027799.

*Primer Sequences.* Primers derived from the porcine sequences were as follows: Set A: forward, 5'-GTC TCA GCC AGC CAA TCC CT-3' and reverse, 5'-AAG GAA ATG CAT GCG GCC AG-3'; Set B: forward, 5'-GGG CAC CAA CAT TGC AGC C-3' and reverse, 5'-CTT GCA GAC AGA CAT CTG GTT-3'.

*Method of Detection.* The PCR was performed in 10- $\mu$ L reactions that included *Taq* DNA polymerase (Promega, Madison, WI), 1 $\times$  PCR buffer, 1.5 mM MgCl<sub>2</sub>, 200  $\mu$ M each dNTP, 3 pmol each primer, and 12.5 ng of genomic DNA. The PCR was carried out in a PTC-200 thermocycler (MJ Research, Watertown, MA). The cycling conditions included initial denaturation at 95°C for 4 min followed by 30 cycles at 95°C for 45 s, 60°C for 1 min, 72°C for 1.5 min, and final extension at 72°C for 12 min. For the PCR-RFLP we used the set B forward primer and following as reverse, 5'-GAT CGT TGA AGT GGC CGA TGT-3'. The PCR product generated by these primers was digested overnight with *DpnII* at 37°C. For the physical mapping the set A forward primer and the following pig specific reverse primer were used: 5'-CGT CTG GGT TTC TTC CTC TCT-3' in order to obtain a pig-specific amplicon only. All the PCR products were separated by agarose electrophoresis and visualized by ethidium bromide staining.

1/1 1/2 2/2



**Figure 1.** Agarose gel image showing the three different PCR-RFLP (*DpnII*) genotypes (9-bp fragment not seen).

*Description of Polymorphisms.* The PCR products from several individuals from each of the commercial lines of pigs (Landrace, Large White, Duroc, Hampshire, and Berkshire) were directly sequenced using dye terminators and an ABI 377 sequencer (Perkin Elmer, Foster City, CA). We initially found four single nucleotide polymorphisms (SNP) and one microsatellite polymorphism in the gene segment covering exon 8 to exon 9. One SNP, present in exon 8, was confirmed by enzyme digestion by PCR-RFLP. This polymorphism (C to T substitution at position 20 in AY027798) determines a restriction site for the enzyme *DpnII* and was found to segregate in three of the PiGMap families (Archibald et al., 1995). The fragment sizes generated by the *DpnII*

<sup>1</sup>This work was financially supported in part by PIC International Group and the Iowa Agric. and Home Econ. Exp. Stn., Ames, paper no. J-19246, project no. 3600, by Hatch Act and State of Iowa funds.

<sup>2</sup>Correspondence: E-mail: mfrothsc@iastate.edu.

Received August 13, 2001.

Accepted January 24, 2002.

©2002 American Society of Animal Science. All rights reserved.

**Table 1.** Genotype and allelic frequency for the porcine *ATP2A1* *DpnII* PCR-RFLP site

Commercial population	n	Number of animals with different genotypes			Allele 1 frequency
		1/1	1/2	2/2	
Large White	50	33	15	2	0.81
Landrace	50	8	17	25	0.33
Hampshire	50	36	13	1	0.85
Duroc	50	3	35	12	0.41
Berkshire	50	3	20	27	0.26

digestion were 70 bp (allele 1) and 61 bp and 9 bp (allele 2) as well as the 140-bp monomorphic fragment (Figure 1).

**Inheritance Pattern.** In three PiGMaP families the segregation of the *DpnII* polymorphism followed a Mendelian autosomal inheritance pattern.

**Allele Frequency.** Alleles and genotypes frequencies were estimated in several commercial pig populations and these are shown in Table 1.

**Chromosomal Location.** We used a pig/rodent somatic cell hybrid panel (**SCHP**) including 27 cell lines (Yerle et al., 1996) for physical mapping of the pig *ATP2A1* gene. The PCR results were submitted and analyzed as described on the Web site <http://www.toulouse.inra.fr/lgc/pig/hybrid.htm>. The results of the SCHP analysis revealed that the *ATP2A1* gene is located on pig chromosome 3p16–17. Linkage mapping was then performed using two-point linkage analysis, using the genotypes revealed by *DpnII* PCR-RFLP analysis of three PiGMaP families (Archibald et al., 1995) and employing the CRIMAP program (Green et al., 1990). The *ATP2A1* gene is significantly linked with several markers (the two-point recombination frequencies and LOD scores with values greater than 5.00 are given in parentheses): SW2527 (0.06, 8.30), SW833 (0.12, 7.87), S0151 (0.07, 6.91), SW72 (0.06, 6.88), S0032 (0.12, 5.72), and S0206 (0.06, 5.69). These results and multipoint linkage analysis show that the *ATP2A1* gene is most likely located between SW2527 and SW833, confirming the physical localization.

**Comments.** The *ATP2A1* gene encodes SERCA1, which is the fast-twitch skeletal muscle sarcoplasmic reticulum Ca<sup>2+</sup> ATPase. Recently, mutations in the *ATP2A1* gene were reported to be associated with Brody disease in humans (Odermatt et al., 2000).

The human *ATP2A1* gene maps to human chromosome 16p12.1. There is a conserved synteny between HSA16p and SSC3p as demonstrated by the bidirectional chromosome painting analysis (Goureau et al., 1996; <http://www.toulouse.inra.fr/lgc/pig/compare/SSCHTML/SSC3B.HTM>). The physical localization of the pig *ATP2A1* gene on SSC3p16–17 was confirmed also by linkage mapping, and these results are in accordance with the across-species studies and add another locus to this conserved segment of synteny.

#### Literature Cited

- Archibald, A. L., and C. S. Haley, et al. 1995. The PiGMaP consortium linkage map of the pig (*Sus scrofa*). *Mamm. Genome* 6:157–175.
- Goureau, A., M. Yerle, A. Schmitz, J. Riquet, D. Milan, P. Pinton, G. Frelat, and J. Gellin. 1996. Human and porcine correspondence of chromosome segments using bidirectional chromosome painting. *Genomics* 36:252–262.
- Green, P., K. Falls, and S. Crooks. 1990. Documentation for CRIMAP, version 2.4. Washington Univ. School of Medicine, St. Louis, MO.
- Odermatt, A., K. Barton, V. K. Khanna, J. Mathieu, D. Escolar, T. Kuntzer, G. Karpati, and D. H. MacLennan. 2000. The mutation of Pro<sup>789</sup> to Leu reduces the activity of the fast-twitch skeletal muscle sarco(endo)plasmic reticulum Ca<sup>2+</sup> ATPase (SERCA1) and is associated with Brody disease. *Hum. Genet.* 106:482–491.
- Yerle, M., G. Echard, A. Robic, A. Mairal, C. Dubut-Fontana, J. Riquet, P. Pinton, D. Milan, Y. Lahbib-Mansais, and J. Gellin. 1996. A somatic cell hybrid panel for pig regional gene mapping characterized by molecular cytogenetics. *Cytogenet. Cell Genet.* 73:194–202.

**Key Words:** Pigs, Polymorphism, Gene Mapping, Adenosinetriphosphatase