

University of Nebraska - Lincoln
DigitalCommons@University of Nebraska - Lincoln

Robert Powers Publications

Published Research - Department of Chemistry

2012

Sample Preparation of *Mycobacterium tuberculosis* Extracts for Nuclear Magnetic Resonance Metabolomic Studies

Denise Zinniel

University of Nebraska-Lincoln, dzinniel2@unl.edu

Robert J. Fenton

University of Nebraska - Lincoln, rfenton2@unl.edu

Steven M. Halouska

University of Nebraska-Lincoln, halouska@huskers.unl.edu

Robert Powers

University of Nebraska-Lincoln, rpowers3@unl.edu

Raul G. Barletta

University of Nebraska - Lincoln, rbarletta1@unl.edu

Follow this and additional works at: <http://digitalcommons.unl.edu/chemistrypowers>

Zinniel, Denise; Fenton, Robert J.; Halouska, Steven M.; Powers, Robert; and Barletta, Raul G., "Sample Preparation of *Mycobacterium tuberculosis* Extracts for Nuclear Magnetic Resonance Metabolomic Studies" (2012). *Robert Powers Publications*. 50.

<http://digitalcommons.unl.edu/chemistrypowers/50>

This Article is brought to you for free and open access by the Published Research - Department of Chemistry at DigitalCommons@University of Nebraska - Lincoln. It has been accepted for inclusion in Robert Powers Publications by an authorized administrator of DigitalCommons@University of Nebraska - Lincoln.

Video Article

Sample Preparation of *Mycobacterium tuberculosis* Extracts for Nuclear Magnetic Resonance Metabolomic Studies

Denise K. Zinniel¹, Robert J. Fenton¹, Steven Halouska², Robert Powers², Raul G. Barletta¹¹School of Veterinary Medicine and Biomedical Sciences, University of Nebraska-Lincoln²Department of Chemistry, University of Nebraska-LincolnCorrespondence to: Robert Powers at rpowers3@unl.edu, Raul G. Barletta at rbarletta@unl.eduURL: <http://www.jove.com/video/3673/>

DOI: 10.3791/3673

Keywords: Infection, Issue 67, *Mycobacterium tuberculosis*, NMR, Metabolomics, homogenizer, lysis, cell extracts, sample preparation

Date Published: 9/3/2012

Citation: Zinniel, D.K., Fenton, R.J., Halouska, S., Powers, R., Barletta, R.G. Sample Preparation of *Mycobacterium tuberculosis* Extracts for Nuclear Magnetic Resonance Metabolomic Studies. *J. Vis. Exp.* (67), e3673 10.3791/3673, DOI : 10.3791/3673 (2012).

Abstract

Mycobacterium tuberculosis is a major cause of mortality in human beings on a global scale. The emergence of both multi- (MDR) and extensively-(XDR) drug-resistant strains threatens to derail current disease control efforts. Thus, there is an urgent need to develop drugs and vaccines that are more effective than those currently available. The genome of *M. tuberculosis* has been known for more than 10 years, yet there are important gaps in our knowledge of gene function and essentiality. Many studies have since used gene expression analysis at both the transcriptomic and proteomic levels to determine the effects of drugs, oxidants, and growth conditions on the global patterns of gene expression. Ultimately, the final response of these changes is reflected in the metabolic composition of the bacterium including a few thousand small molecular weight chemicals. Comparing the metabolic profiles of wild type and mutant strains, either untreated or treated with a particular drug, can effectively allow target identification and may lead to the development of novel inhibitors with anti-tubercular activity. Likewise, the effects of two or more conditions on the metabolome can also be assessed. Nuclear magnetic resonance (NMR) is a powerful technology that is used to identify and quantify metabolic intermediates. In this protocol, procedures for the preparation of *M. tuberculosis* cell extracts for NMR metabolomic analysis are described. Cell cultures are grown under appropriate conditions and required Biosafety Level 3 containment,¹ harvested, and subjected to mechanical lysis while maintaining cold temperatures to maximize preservation of metabolites. Cell lysates are recovered, filtered sterilized, and stored at ultra-low temperatures. Aliquots from these cell extracts are plated on Middlebrook 7H9 agar for colony-forming units to verify absence of viable cells. Upon two months of incubation at 37 °C, if no viable colonies are observed, samples are removed from the containment facility for downstream processing. Extracts are lyophilized, resuspended in deuterated buffer and injected in the NMR instrument, capturing spectroscopic data that is then subjected to statistical analysis. The procedures described can be applied for both one-dimensional (1D) ¹H NMR and two-dimensional (2D) ¹H-¹³C NMR analyses. This methodology provides more reliable small molecular weight metabolite identification and more reliable and sensitive quantitative analyses of cell extract metabolic compositions than chromatographic methods. Variations of the procedure described following the cell lysis step can also be adapted for parallel proteomic analysis.

Video Link

The video component of this article can be found at <http://www.jove.com/video/3673/>

Protocol

1. Protocol Text

This protocol highlights the adaption of NMR methodology to *M. tuberculosis* (Class III agent). Therefore, Biosafety Level 3 (BSL3) practices need to be followed when conducting *M. tuberculosis* research in an annually certified laboratory. Exposure to laboratory-generated aerosols is the most important hazard encountered by personnel working with these microorganisms. The following procedures are conducted at our institution and variations may exist based on the Institutional Biosafety Committee's recommendations. Common personnel protective equipment will consist of a Tyvek suit, bouffant cap, booties, N95 respirator, eye protection, sleeves, and a double pair of nitrile gloves. Work involving *M. tuberculosis* cultures and/or manipulations with open *M. tuberculosis* containers is performed in the type A2 or B2 biological safety cabinet. Plastic-covered absorbent paper is placed on the working surface. All materials/supplies to be disposed or removed from the facility must be placed in two biohazard bags and decontaminated by autoclaving. Work surfaces and equipment utilized within the cabinet (FastPrep-24 lysis homogenizer, spectrophotometer, bucket with ice, etc.) must be disinfected after each work session with 1% AmphyI (tuberculocidal, bactericidal, fungicidal, and virucidal agent). *M. tuberculosis* cultures must be placed under double containment for transportation to larger equipment located outside of the biological safety cabinet such as freezers, incubators, centrifuges, and refrigerators. Centrifugation is conducted with enclosed safety cups and O-ring screw top tubes. For further analysis outside the BSL3 laboratory, cell-free extracts are filtered through a 0.2 µm filter or microorganisms heat killed at 95 °C for 15 min.² Samples are plated to verify the absence of colony-forming units prior to removal from containment.

1. Transfer 110 ml of Middlebrook 7H9 complete media containing polysorbate 80 (Tween 80 to prevent clumping) broth (MADC-TW) or a suitable medium to a 250 ml Erlenmeyer flask. Triplicate cultures are routinely grown per condition when using ^{13}C -metabolites, and ten identical cultures are grown for 1D ^1H NMR profiling. For two conditions (e.g., with and without addition of drug), double volume of culture per replicate can be grown and split into two identical cultures. All reagent and solution recipes are provided at the end of the protocol.
2. Inoculate broth with 0.150 ml of *M. tuberculosis* 50% glycerol stock (allow to thaw on ice). See Note 1 below.
3. Let the culture grow at 37 °C shaking at 100 rpm for approximately 6 days (OD_{600} 0.6-0.8). See Note 2 below.
4. If no antibiotics, alternative additions or other treatments are needed, the cultures are ready to be harvested. If treatments are used, continue directly to Step 5. Remove a 0.5 ml sample from each flask, transfer to a microcentrifuge tube and place at 4 °C for culture titration and quality control: contamination tests, phenotypic analysis, PCR tests. See Note 3 below. At this point, proceed to Step 6.
5. Remove flasks from shaker and perform the desired treatment (e.g., add drug or metabolite). Place flasks back in the shaker and incubate for an additional period (e.g., 6-18 hr). At the end of this time, take another 1.0 ml aliquot and determine OD_{600} . Remove a 0.5 ml sample from each flask, transfer to a microcentrifuge tube and place at 4 °C for culture titration and quality control.
6. Place cultures on ice for 5 min. After this step, leave cells on ice throughout the entire remaining protocol. Harvest cultures by centrifugation at 2,000 x g and 4 °C for 15 min in 50 ml tubes using a benchtop centrifuge. Each culture will require four tubes with 25 ml each (a total of 100 ml is required to obtain adequate signal-to-noise for 2D ^1H - ^{13}C NMR experiments, where only 50 ml per culture is required for 1D ^1H NMR experiments).
7. Wash each cell pellet two times with ice-cold ddH₂O (approximately 15 ml the first time and 10 ml the second time) by the centrifugation parameters described above. For the second wash, combine the 10 ml aliquots into the same tube before spinning. Resuspend the cell pellet in a final volume of 1.0 ml ddH₂O (need to adjust for cell pellet volume). If a single cell suspension free of clumping is desired at this step, cells can be briefly sonicated and/or passed through a 27-gauge needle three times. Alternatively, the cell pellet can be frozen at -80 °C and stored until further processing. In the latter case, frozen pellets are thawed on ice prior to resuspension. Resuspend the cell pellets in a final volume of 1.0 ml ddH₂O as stated above.
8. Transfer the 1.0 ml cell suspension to a 2.0 ml screw cap tube containing Lysing Matrix B (0.1 mm silica spheres). Place the FastPrep-24 lysis homogenizer inside the biosafety cabinet. Put the samples into the sample holder, securing the retention spoke plate on top of the tube. Process the samples for 60 sec in the homogenizer at a speed setting of 6 meters/sec.
9. Spin the samples in a microcentrifuge at 15,000 x g and 4 °C for 10 min to pellet cell debris and intact cells.
10. Remove supernatant and pass sample through a syringe filter (0.2 μm) into a sterile tube. Plate 0.1 ml of sample (or a representative fraction of the sample, as for example 10%) on MADC agar to verify that there are no viable cells. Investigators may also conduct more than one filtration step and/or verify the presence of viable cells in the extracts using live-dead staining procedures so as to prevent or identify any potential biosafety concerns. Freeze samples in an ethanol-dry ice bath to store at -80 °C until they are ready to be lyophilized and processed in an NMR facility.
11. After 2 months, check plates to verify the absence of colony forming units. If no CFU's are found, samples may be taken out of the BSL3 laboratory. Further analysis is carried out in a standard NMR facility, which normally serves multi-users and operates under no specific containment requirements.
12. Lyophilize the samples to dryness, then resuspend in 0.7 ml of NMR buffer and transfer to a microcentrifuge tube. Centrifuge for 3 min at 13,000 x g. Remove 0.6 ml and transfer to a 5 mm NMR tube. Alternatively, lyophilized samples could be mailed to an external facility as non-biohazardous regular samples.
13. NMR data is collected immediately. Despite all precautions, active enzymes may still be present and the sample is typically not stable for long periods of time. Changes in the NMR spectrum are noticeable when the samples are left out at room temperature or at 4 °C for more than 1 week. Also, NMR data collection is alternated between untreated and drug treated cultures, where samples are randomly selected from each category. This prevents unnecessary bias because a particular category had a longer delay before the NMR spectra were collected. A bias in the data would occur if the NMR spectra for all the untreated samples were collected first, and then followed by the drug treated samples. If the samples are unable to be immediately analyzed by NMR, the samples should be stored in 1 ml Eppendorf tubes at -80 °C.
14. After inserting the samples into a BACS-120 sample changer, instrument calibration, which involves a few routine steps such as lock, shim, tune, and optimization of the 90 ° pulse length, is required to maximize the quality of the results. A single sample is used to calibrate the 90 ° pulse length and tune the instrument for the remaining samples. Locking, shimming, and NMR data collection for every sample is automated using ICONNMR and gradshim.
15. A 1D ^1H NMR spectrum is collected using the Bruker zgesgp pulse sequence with water suppression using excitation sculpting. A total of 32k data points with a sweep width of 5482.5Hz, 128 scans, and 16 dummy scans are used. A 2D ^1H - ^{13}C HSQC spectrum is collected using the Bruker hsqcetgp pulse sequence. A total of 2048 data points with a sweep width of 5000.0 Hz is collected along the direct ^1H dimension, and 64 data points with a sweep width of 18864.9 Hz along the indirect ^{13}C dimension. The spectrum is collected with 128 scans and 16 dummy scans to obtain good signal to noise.

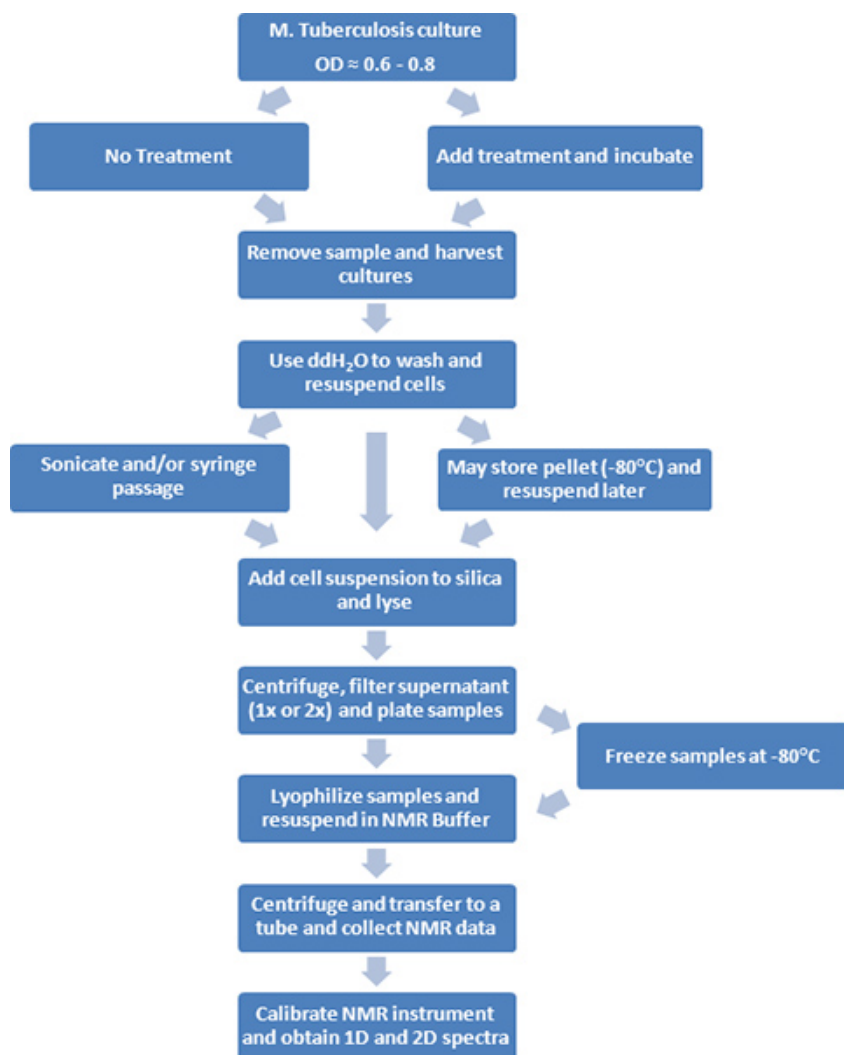


Figure 1. A flow diagram of the experimental procedures is depicted.

NMR buffer

Stock solution of 50 mM potassium phosphate buffer with 50 μM TMSP:

- 2.17 g K₂HPO₄ (potassium phosphate dibasic)
- 1.70 g KH₂PO₄ (potassium phosphate monobasic)
- 7.86 mg Sodium-3-Trimethylsilylpropionate (TMSP-2,2,3,3-D₄ (D,98%))
- Dissolve in 500 ml of "100%" D₂O
- The final solution should be at a pH 7.2 (uncorrected)

MADC-TW or MOADC-TW (1 L)

- 4.7 g Middlebrook 7H9 broth base
- 900 ml ddH₂O
- 2 ml glycerol
- Mix the components and autoclave for 25 min. Cool liquid to touch and add the following solutions:
- 100 ml ADC when preparing MADC or 100 ml OADC when preparing MOADC
- 2.5 ml 20% Tween 80 (alternatively, 1 ml of non-metabolizable 20% Tyloxapol)
- 10 ml 1% cycloheximide

ADC (1 L)

- 20 g D(+)-Glucose
- 50 g BSA Fraction V
- 8.5 g NaCl
- 800 ml ddH₂O

- Dissolve together, adjust volume to 1 L and sterilize with 0.2 μm filter. Store at 4 °C.

Alternatively, to prepare OADC (1L), add all components listed above plus 50 ml of 1% oleic acid (recipe below makes a 250 ml batch). Dissolve together, adjust volume to 1 L and sterilize with 0.2 μm filter. Bottle needs to be wrapped in aluminum foil and store at 4 °C.

- 2.5 g Oleic Acid
- 250 ml 0.2M NaOH
- Thaw oleic acid (solidifies upon refrigeration) by heating at 55 °C for 10 min and add to NaOH solution and heat with stirring for 60 min. Store in sterile glass bottles that are wrapped in aluminum foil. Seal bottles with parafilm and store at 4 °C.

If preferred, you can purchase commercial BD BBL Middlebrook ADC or OADC with catalase Enrichment.

1% Cycloheximide (100ml)

- 1 g cycloheximide
- 100 ml ddH₂O

Dissolve and sterilize with 0.2 μm filter. Store at 4 °C. Caution: cycloheximide is toxic so handle with extreme care.

20% (v/v) Tween 80 (100ml)

- 20 ml Tween 80
- 80 ml ddH₂O

Alternatively, weigh 20 g of Tween 80 (approximately 18.9 ml; density 1.06 g/ml), to prepare 20% w/v solution. Heat solution to 55 °C for 30 min to dissolve, and mix completely. Sterilize liquid with a 0.2 μm filter. Store the final solution at room temperature.

20% (v/v) Tyloxapol (100ml)

- 20 ml Tyloxapol
- 80 ml ddH₂O

Alternatively, weigh 20 g of Tyloxapol (approximately 18.2 ml; density 1.1 g/ml), to prepare 20% w/v solution. Heat solution to 55 °C for 30 min to dissolve, and mix completely. Sterilize liquid with a 0.2 μm filter. Store the final solution at room temperature.

Note 1: Glycerol stocks of *M. tuberculosis* are prepared using the following protocol.

Stocking of *M. tuberculosis*

- Grow *M. tuberculosis* in 50 ml MADC to saturation (OD₆₀₀ = 1.5 to 2.0) at 37 °C under shaking conditions (100 rpm). Depending on the strain, this will take 7-14 days.
- Spin samples at 2,000 x g at 4 °C for 15 min to pellet culture. Remove supernatant.
- Resuspend in 6 ml of sterile 50% glycerol.
- Aliquot 1.5 ml into 4 Corning cryogenic vials and label appropriately.
- Immediately flash freeze vials in ethanol/dry ice bath and store at -80 °C.

Note 2: Inoculating strain H37Rv (-80 °C stock up to 1.5 years old) into 70 ml of MADC media yields an OD₆₀₀ of about 0.6 after 5 days of growth at 37 °C under shaking conditions (100 rpm) in an Innova 40 Shaker.

Note 3: To test culture contamination, investigators could inoculate a culture aliquot onto standard rich medium and verify absence of growth after overnight incubation. Routinely, cultures are plated on MADC agar to observe colony morphology and examine by phase-contrast microscopy. If desired, cultures can be verified by PCR using IS6110 primers as described.³

2. Representative Results

A sample that is well prepared will yield an NMR spectrum similar to the one depicted in **Figure 2**. This spectrum is a representation of the *M. tuberculosis* wild type metabolic pool. The identified metabolites are directly or indirectly associated with the D-alanine pathway. Also, the magnitude of peak intensities is proportional to metabolite concentrations present in the cell extract. Therefore changes in peak intensities between untreated cultures, drug treatment, and mutant strains can indicate perturbations in metabolites and metabolic pathways. The *M. tuberculosis* 1D ¹H NMR spectra were collected on a Bruker Avance 500 MHz spectrometer equipped with a triple-resonance, Z-axis gradient cryoprobe. The spectrum contains ca. 400 peaks, from which it was possible to identify and quantify 40-50 metabolites, including amino acids, nucleotide precursors, and glycolytic and citric acid intermediates. A BACS-120 sample changer with Bruker Icon software was used to automate the NMR data collection. 1D ¹H NMR spectra were collected using excitation sculpting⁴ to efficiently remove the solvent and maintain a flat baseline, eliminating any need for baseline collection that may induce artifacts in subsequent principal component analysis (PCA) or orthogonal partial least squares discriminant analysis (OPLS-DA). A 1D ¹H NMR spectrum is collected at 25 °C with a spectrum width of 5482.5 Hz and 32K data points. A total of 16 dummy scans and 128 scans were used to obtain the spectrum. The ACD Labs 1D NMR processor software was used to semi-automatically process all the 1D ¹H NMR spectra. The spectra were Fourier transformed, phased, and referenced to the TMSP peak (0.0 ppm). The NMRpipe software package was used to individually process the 2D ¹H-¹³C NMR spectra and analyzed with NMRDraw. The Bruker FID data file was first converted to a file format recognizable by NMRpipe and then the spectrum was Fourier transformed, phase corrected, and zero filled. The observed NMR peaks in the 1D ¹H NMR spectrum and 2D ¹H-¹³C NMR spectrum are assigned to specific metabolites using

^1H and ^{13}C chemical shift tolerances of 0.05 and 0.50 ppm, respectively, and the Madison Metabolomics Consortium Database (MMCD),⁵ the BioMagResBank,⁶ and the Human Metabolome Database.⁷ Specifically, the 1D and 2D NMR spectra are manually peak-picked, where the peak list of NMR chemical shifts is then uploaded to the Human Metabolome Database. The metabolites identified by the Human Metabolome Database are assigned to the NMR spectrum based on both maximizing the number of matching NMR resonances and belonging to a metabolic network. Each compound or metabolite typically has multiple C-H pairs and correspondingly multiple NMR resonances. Thus, the more of these NMR resonances that are observed in the experimental NMR spectrum, the more likely the metabolite is present. Similarly, identifying multiple metabolites associate with the same pathway increases the likelihood of correct assignments. The presence of metabolites and metabolic pathways are verified with the Kyoto Encyclopedia of Genes and Genomes (KEGG)⁸ and the MetaCyc databases.⁹ *Mycobacterium smegmatis* is a useful model system for *M. tuberculosis* and other mycobacterial pathogens. As described elsewhere, samples of *M. smegmatis* could also be disrupted by sonication.¹⁰

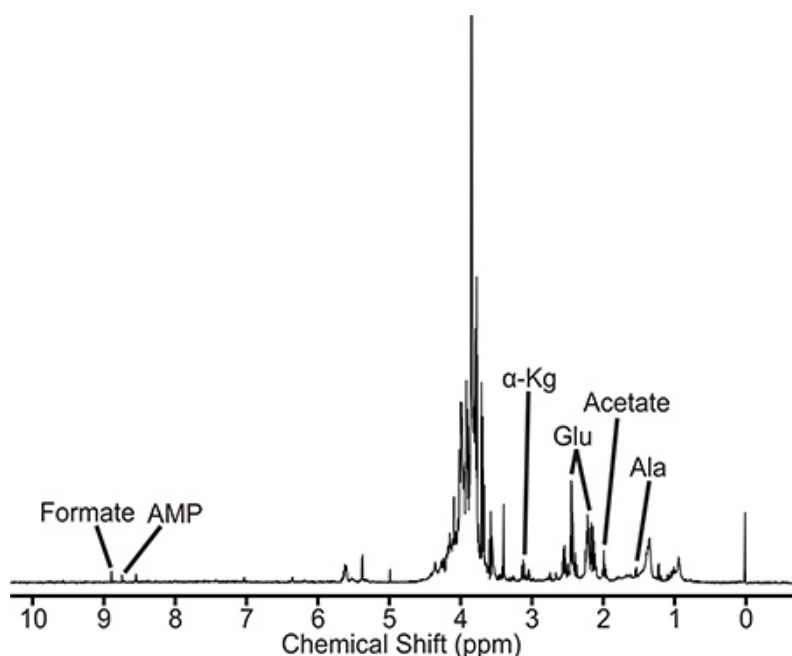


Figure 2. 1D ^1H NMR spectrum of *Mycobacterium tuberculosis* cell extract. NMR peaks associated with representative metabolites are labeled. Abbreviations are the following: AMP, adenosine mono phosphate; α -Kg, α -ketoglutarate; Glu, Glutamate; and Ala, alanine.

Discussion

A significant number of studies have analyzed the transcriptomic and proteomic profiles of *M. tuberculosis* under a variety of *in vitro* and *in vivo* conditions.¹¹⁻¹⁶ Ultimately, changes in gene expression and enzyme activity lead to variations in the concentrations of small molecular weight molecules. The complete description of these compounds constitutes the metabolome. Thus, the effects of drugs and varying growth conditions on metabolic pathways may be followed by metabolomic analysis.^{17,18} Few studies have taken advantage of this methodology to study metabolic pathways in *M. tuberculosis* (see below) and other mycobacteria, or to analyze metabolic changes in mice infected with *M. tuberculosis*.¹⁹

A potential pitfall of this methodology is that some microorganisms in the sample may not be completely lysed. If necessary, the lysis step can be repeated one or two more times. Lysis efficiency can be monitored by performing a standard protein assay (e.g., BioRad DC Protein Assay). To increase the sensitivity of detection for metabolites present at low concentrations, several identical samples (collected at Step 8) can be pooled, lyophilized, and resuspended in a lower volume.

Alternative sample preparation procedures for metabolomic studies in mycobacteria have been described. Examples include, cell disruption by sonication,^{10,20} bead beating,²⁰ and homogenization with Zirconia²¹ beads. Likewise, variations in extraction procedures have used acidified acetonitrile and/or other organic solvents.^{20,22-24} Metabolite identification has also been achieved by different analytical procedures, including gas-chromatography-mass spectrometry (GC-MS),²⁴ liquid chromatography-mass spectrometry (LC-MS),^{21,23} and reverse-phase high performance liquid chromatography (rp-HPLC).²⁵ A limited number of metabolites were also identified and quantified by direct enzymatic determinations.²⁶ Although the number of total metabolites expected in cytosolic extracts of mycobacteria remains unknown,²² it is noted that 1,692 metabolites were identified in *Bacillus subtilis* extracts by capillary electrophoresis and MS.²⁷

Important issues concerning analytical identification and quantification procedures have been reviewed by Metz *et al.*²⁸ Advantages of NMR technology include the ease of sample preparation and the non-destructive nature of the procedure. However, the databases of available spectra for compound identification, though ever expanding, are still insufficient for full metabolite identification. Methods of GC-MS and LC-MS may require more elaborate sample preparation procedures and have greater variability, making it difficult to compare results from different

laboratories. In addition, GC-MS requires metabolite derivatization with a consequential loss in material that leads to less accurate quantification. Methods to improve separations and eliminate ionization suppression in LC-MS promise to overcome some of these problems. Nonetheless, in our opinion, this drawback will still remain a significant issue in the near future. Moreover, NMR methodologies such as 2D HSQC, 2D J-resolved and STOCSY experiments are already resulting in increased efficiency and accuracy in metabolite identification.²⁹ Nevertheless, NMR and LC-MS procedures are complementary procedures and are likely to be integrated in a combined analysis of a systems metabolome.²⁸

The sample preparation procedures described here, with appropriate modifications of buffer systems and steps after the FastPrep-24 lysis, can be adapted to proteomic analysis, as described elsewhere.³⁰ Thus, tuberculosis researchers may analyze samples from wild type and mutant strains grown under a variety of conditions using procedures that encompass combined systems biology approaches.³¹ These technologies should prove indispensable to dissect the central metabolic routes of *M. tuberculosis*,³² the understanding of which may be necessary to elucidate the mechanisms of latency, and to develop better vaccines and antimycobacterial agents. This need is urgent, especially in the context of the control and treatment of MDR and XDR tuberculosis.^{33,34}

Disclosures

No conflicts of interest declared.

Acknowledgements

The authors would like to thank all members of the laboratories of Dr. Barletta and Dr. Powers for helpful comments while developing the protocol. We thank Wendy Austin for helpful discussions and proofreading of the manuscript. The work described in this manuscript was funded by seed pilot grants to each investigator listed above from the University of Nebraska-Lincoln Redox Biology Center (parent grant #NCRR 2P20RR 017675, D. Becker, P.I.). In addition, we thank Dr. Ofelia Chacon for providing funds from her R21 grant (1R21AI087561-01A1) for research supplies and Mr. Halouska's partial salary support to standardize NMR techniques included in this publication.

References

- Larsen, M.H., Biermann, K., Tandberg, S., Hsu, T., & Jacobs, W.R., Jr. Genetic Manipulation of *Mycobacterium tuberculosis*. *Curr. Protoc. Microbiol.* **Chapter 10**, Unit 10A 2 (2007).
- Larsen, M.H., Biermann, K., & Jacobs, W.R., Jr. Laboratory Maintenance of *Mycobacterium tuberculosis*. *Curr. Protoc. Microbiol.* **Chapter 10**, Unit 10A 1 (2007).
- Clarridge, J.E., 3rd, Shawar, R.M., Shinnick, T.M., & Plikaytis, B.B. Large-scale use of polymerase chain reaction for detection of *Mycobacterium tuberculosis* in a routine mycobacteriology laboratory. *J. Clin. Microbiol.* **31**, 2049-56 (1993).
- Nguyen, B.D., Meng, X., Donovan, K.J., & Shaka, A.J. SOGGY: solvent-optimized double gradient spectroscopy for water suppression. A comparison with some existing techniques. *J. Magn. Reson.* **184**, 263-74 (2007).
- Cui, Q., *et al.* Metabolite identification via the Madison Metabolomics Consortium Database. *Nat. Biotechnol.* **26**, 162-4 (2008).
- Ulrich, E.L., *et al.* BioMagResBank. *Nucleic Acids Res.* **36**, D402-8 (2008).
- Wishart, D.S., *et al.* HMDB: the Human Metabolome Database. *Nucleic Acids Res.* **35**, D521-6 (2007).
- Kanehisa, M., *et al.* KEGG for linking genomes to life and the environment. *Nucleic Acids Res.* **36**, D480-4 (2008).
- Karp, P.D., *et al.* Expansion of the BioCyc collection of pathway/genome databases to 160 genomes. *Nucleic Acids Res.* **33**, 6083-9 (2005).
- Halouska, S., *et al.* Use of NMR metabolomics to analyze the targets of D-cycloserine in mycobacteria: role of D-alanine racemase. *J. Proteome. Res.* **6**, 4608-14 (2007).
- Boshoff, H.I., *et al.* The transcriptional responses of *Mycobacterium tuberculosis* to inhibitors of metabolism: novel insights into drug mechanisms of action. *J. Biol. Chem.* **279**, 40174-84 (2004).
- Mehaffy, C., *et al.* Descriptive proteomic analysis shows protein variability between closely related clinical isolates of *Mycobacterium tuberculosis*. *Proteomics.* **10**, 1966-84 (2010).
- Schnappinger, D., *et al.* Transcriptional Adaptation of *Mycobacterium tuberculosis* within Macrophages: Insights into the Phagosomal Environment. *J. Exp. Med.* **198**, 693-704 (2003).
- Schnappinger, D., Schoolnik, G.K., & Ehrt, S. Expression profiling of host pathogen interactions: how *Mycobacterium tuberculosis* and the macrophage adapt to one another. *Microbes. Infect.* **8**, 1132-40 (2006).
- Shui, W., *et al.* Quantitative proteomic profiling of host-pathogen interactions: the macrophage response to *Mycobacterium tuberculosis* lipids. *J. Proteome. Res.* **8**, 282-9 (2009).
- Talaat, A.M., Lyons, R., Howard, S.T., & Johnston, S.A. The temporal expression profile of *Mycobacterium tuberculosis* infection in mice. *Proc. Natl. Acad. Sci. U.S.A.* **101**, 4602-7 (2004).
- Forgue, P., *et al.* NMR metabolic profiling of *Aspergillus nidulans* to monitor drug and protein activity. *J. Proteome Res.* **5**, 1916-23 (2006).
- Goodacre, R., Vaidyanathan, S., Dunn, W.B., Harrigan, G.G., & Kell, D.B. Metabolomics by numbers: acquiring and understanding global metabolite data. *Trends Biotechnol.* **22**, 245-52 (2004).
- Shin, J.H., *et al.* (1)H NMR-based Metabolomic Profiling in Mice Infected with *Mycobacterium tuberculosis*. *J. Proteome Res.* **10**, 2238-47 (2011).
- Jaki, B.U., Franzblau, S.G., Cho, S.H., & Pauli, G.F. Development of an extraction method for mycobacterial metabolome analysis. *J. Pharm. Biomed. Anal.* **41**, 196-200 (2006).
- de Carvalho, L.P., *et al.* Metabolomics of *Mycobacterium tuberculosis* reveals compartmentalized co-catabolism of carbon substrates. *Chem. Biol.* **17**, 1122-31 (2010).
- de Carvalho, L.P., *et al.* Activity-based metabolomic profiling of enzymatic function: identification of Rv1248c as a mycobacterial 2-hydroxy-3-oxoadipate synthase. *Chem. Biol.* **17**, 323-32 (2010).

23. Marrero, J., Rhee, K.Y., Schnappinger, D., Pethe, K., & Ehrt, S. Gluconeogenic carbon flow of tricarboxylic acid cycle intermediates is critical for *Mycobacterium tuberculosis* to establish and maintain infection. *Proc. Natl. Acad. Sci. U.S.A.* **107**, 9819-24 (2010).
24. Tang, Y.J., *et al.* Central metabolism in *Mycobacterium smegmatis* during the transition from O₂-rich to O₂-poor conditions as studied by isotopomer-assisted metabolite analysis. *Biotechnol. Lett.* **31**, 1233-40 (2009).
25. Kweon, O., *et al.* A polyomic approach to elucidate the fluoranthene-degradative pathway in *Mycobacterium vanbaalenii* PYR-1. *J. Bacteriol.* **189**, 4635-47 (2007).
26. Hasan, M.R., Rahman, M., Jaques, S., Purwantini, E., & Daniels, L. Glucose 6-phosphate accumulation in mycobacteria: implications for a novel F420-dependent anti-oxidant defense system. *J. Biol. Chem.* **285**, 19135-44 (2010).
27. Soga, T., *et al.* Quantitative metabolome analysis using capillary electrophoresis mass spectrometry. *J. Proteome Res.* **2**, 488-94 (2003).
28. Metz, T.O., *et al.* The future of liquid chromatography-mass spectrometry (LC-MS) in metabolic profiling and metabolomic studies for biomarker discovery. *Biomark Med.* **1**, 159-185 (2007).
29. Ludwig, C. & Viant, M.R. Two-dimensional J-resolved NMR spectroscopy: review of a key methodology in the metabolomics toolbox. *Phytochem. Anal.* **21**, 22-32 (2010).
30. Simpson, R.J. In *Proteins and Proteomics: A Laboratory Manual*. Inglis, J., ed., 425-595, Cold Spring Laboratory Press, (2003).
31. Beste, D.J. & McFadden, J. System-level strategies for studying the metabolism of *Mycobacterium tuberculosis*. *Mol. Biosyst.* **6**, 2363-72 (2010).
32. Rhee, K.Y., *et al.* Central carbon metabolism in *Mycobacterium tuberculosis*: an unexpected frontier. *Trends Microbiol.* (2011).
33. Who. World Health Organization. Anti-tuberculosis Drug Resistance in the World: Report No. 4. (2008).
34. Jassal, M. & Bishai, W.R. Extensively drug-resistant tuberculosis. *Lancet Infect Dis.* **9**, 19-30 (2009).