

University of Nebraska - Lincoln

DigitalCommons@University of Nebraska - Lincoln

US Fish & Wildlife Publications

US Fish & Wildlife Service

2008

2008 Annual Report: Migratory Bird Conservation Commission

Follow this and additional works at: <https://digitalcommons.unl.edu/usfwspubs>



Part of the [Aquaculture and Fisheries Commons](#)

"2008 Annual Report: Migratory Bird Conservation Commission" (2008). *US Fish & Wildlife Publications*. 26.

<https://digitalcommons.unl.edu/usfwspubs/26>

This Article is brought to you for free and open access by the US Fish & Wildlife Service at DigitalCommons@University of Nebraska - Lincoln. It has been accepted for inclusion in US Fish & Wildlife Publications by an authorized administrator of DigitalCommons@University of Nebraska - Lincoln.

2008 Annual Report

Migratory Bird

Conservation Commission





WOOD DUCK.

Migratory Bird Conservation Commission 2008 Annual Report

Table of Contents

The Service's Legacy of Conserving Migratory Waterfowl Habitat	1
The Migratory Bird Conservation Commission	3
The Migratory Bird Conservation Fund	4
MBCC Approvals for Fiscal Year 2008	5
MBCF Land Acquisitions for Fiscal Year 2008	6
National Wildlife Refuge System — New Area and Boundary Addition Approvals for Fiscal Year 2008	9
Notes on Tables One and Two	30
Map – National Migratory Bird Refuges	31
Table One – National Migratory Bird Areas	32
Map – Wetland Management Districts	42
Table Two – National Waterfowl Production Areas	43
North American Wetlands Conservation Fund Summary of MBCC Approvals for Fiscal Year 2008	49
Table Three – U.S. Wetlands Conservation Standard Grant Proposals MBCC Approvals for Fiscal Year 2008	50
Table Four – U.S. Wetlands Conservation Small Grant Proposals MBCC Approvals for Fiscal Year 2008	51
Table Five – Canadian Wetlands Conservation Proposals MBCC Approvals for Fiscal Year 2008	52
Table Six – Mexican Wetlands Conservation Proposals MBCC Approvals for Fiscal Year 2008	53
MBCC Membership Chart	54

The Service's Legacy of Conserving Migratory Waterfowl Habitat

The Federal Duck Stamp Program and Migratory Bird Conservation Program have helped secure key habitats to sustain migratory bird populations for decades. They protect wetlands, help dissipate storm runoff, purify water supplies, and store flood water. As we look forward to the future conservation of these critical resources, we can find inspiration in these programs' extraordinary history of success.

At the turn of the 20th century, overeager hunters and the commercial demand for meat and feathers had decimated waterfowl populations. At the same time, periodic droughts caused wetlands and other valuable waterfowl habitat to disappear. In the late 1920s, conservationists, hunters, and government officials worked together to create the Migratory Bird Conservation Act, which Congress passed in 1929. This landmark legislation authorized the Federal government to acquire and permanently protect wetlands for waterfowl. It also created the Migratory Bird Conservation Commission—composed of Federal and State officials—to consider and approve proposals for land acquisition.

Although the Act gave the government authority to create migratory bird refuges, it did not provide a permanent source of acquisition funding. This problem was addressed in the 1930s when President Franklin D. Roosevelt appointed Jay N. "Ding" Darling, a nationally known wildlife conservationist and political cartoonist, to serve as the Chief of the Bureau of Biological Survey. Darling was instrumental in the creation of a stamp, to be purchased by all waterfowl hunters, that would generate funds to pay for the acquisition of waterfowl habitat. In 1934, Congress passed the Migratory Bird Hunting and Conservation Stamp Act, which required all hunters older than 16 to purchase and possess a Federal Duck Stamp while hunting waterfowl. Revenues from Duck Stamp sales are now deposited in the Migratory Bird Conservation Fund. The fund also includes import duties collected on arms and ammunition, receipts from permits for rights-of-way across refuge lands, and any appropriations from the Wetlands Loan Act, which Congress authorized in 1961 as an advance of funds against future revenues from sale of Duck Stamps.

Since 1934, the Service has spent more than \$1 billion Migratory Bird Conservation Fund dollars to permanently protect more than five million acres of important waterfowl habitat—including nearly three million acres of waterfowl production areas in the U.S. Prairie Pothole Region. In 2008 alone, more than \$32 million in funds from the Migratory Bird Conservation Fund were used to purchase or lease nearly 10,000 acres of waterfowl habitat at migratory bird refuges and more than 29,000 acres in the Prairie Pothole Region.

Today as in the past, the Federal Duck Stamp Program and Migratory Bird Conservation Program depend on the support of people who understand and connect with our natural world—people who understand the importance of our wildlife resources and take action. What can you do? Buy a Federal Duck Stamp. Tell people how important Federal Duck Stamps are to ensuring healthy populations of all migratory birds and other wildlife. For more information, visit our Federal Duck Stamp Web site, www.fws.gov/duckstamps/, or our Division of Realty Web site, www.fws.gov/realty.



The Migratory Bird Conservation Commission

Section 2 of the Migratory Bird Conservation Act of February 18, 1929 (Act), established the Migratory Bird Conservation Commission.

Section 2, as amended. A Commission to be known as the Migratory Bird Conservation Commission, consisting of the Secretary of the Interior, as Chairman; the Administrator of the Environmental Protection Agency; the Secretary of Agriculture; two Members of the Senate, to be selected by the President of the Senate; and two Members of the House of Representatives, to be selected by the Speaker, is created and authorized to consider and pass upon any area of land, water, or land and water that may be recommended by the Secretary of the Interior for purchase or rental under this Act, and to fix the price or prices at which such area may be purchased or rented; and no purchase or rental shall be made of any such area until it has been duly approved for purchase or rental by said Commission. Any Member of the House of Representatives, who is a member of Congress, if reelected

to the succeeding Congress, may serve on the Commission notwithstanding the expiration of a Congress. Any vacancy on the Commission shall be filled in the same manner as the original appointment. The ranking officer of the branch or department of a State to which is committed the administration of its game laws, or his authorized representative, shall be a member ex officio of said Commission for the purpose of considering and voting on all questions relating to the acquisition, under said sections, of areas in his State. For purposes of said sections, the purchase or rental of any area of land, water, or land and water includes the purchase or rental of any interest in any such area of land, water, or land and water.

In 1989, the Commission acquired the additional responsibility of approving project funding under the North American Wetlands Conservation Act. This Act provides Federal funding to encourage partnerships to protect, enhance, restore, and manage wetlands and other habitats for migratory birds and other fish and wildlife. The North

American Wetlands Conservation Council, which was created by the legislation, submits project recommendations to the Commission for funding approval.

2008 Membership

Hon. Dirk Kempthorne
Secretary of the Interior; Chairman

Hon. Mike Johanns
Secretary of Agriculture

Hon. Stephen L. Johnson
Administrator; Environmental Protection Agency

Hon. Blanche Lincoln
Senator from Arkansas

Hon. Thad Cochran
Senator from Mississippi

Hon. John D. Dingell
Representative from Michigan

Hon. Wayne T. Gilchrest
Representative from Maryland

A. Eric Alvarez,
Secretary to the Commission
Telephone: (703) 358-1716

The Migratory Bird Conservation Fund

The Migratory Bird Hunting and Conservation Stamp Act of March 18, 1934 (Duck Stamp Act), as amended, created the Migratory Bird Conservation Fund (MBCF), to provide the Department of the Interior with monies to acquire migratory bird habitat. There are three major sources of funds deposited into the MBCF account. The most well-known source is the revenue received from the sale of Migratory Bird Hunting and Conservation Stamps, commonly known as Duck Stamps, as provided for under the Duck Stamp Act. The other two major sources include appropriations authorized by the Wetlands Loan Act of October 4, 1961, as amended, and import duties collected on arms and ammunition, as provided for under the Emergency Wetlands Resources Act of 1986.

The MBCF finances two Service land acquisition programs which are administered by the Division of Realty.

The first program acquires waterfowl habitat in major migratory bird conservation areas under the authority of the Migratory Bird Conservation Act of 1929. The second program acquires small natural wetlands, grasslands, and interests, known as Waterfowl Production Areas, under the authority of the Duck Stamp Act. Waterfowl Production Areas are located primarily in the Prairie Pothole Region of the upper Midwest of the United States.

A total of \$45,144,112 was available for obligation from the MBCF during fiscal year 2008. Obligations for all MBCF land acquisition functions during the fiscal year totaled \$44,094,649. This includes \$20,142,187 for the acquisition of land and interests in land totaling 24,888 acres at major migratory bird conservation areas, and \$22,423,736 for land and interests in land totaling 30,745 acres at Waterfowl Production Areas.



MBCC Approvals for Fiscal Year 2008

Area Approvals - New Areas

<i>Area</i>	<i>State</i>	<i>Approval Date</i>	<i>Acres</i>
Bayou Sauvage NWR	Louisiana	09/09/08	34,536
Tualatin River NWR - Wapato Lake Unit	Oregon	06/12/08	4,310
Waccamaw NWR	South Carolina	09/09/08	54,572
Total			93,418

Area Approvals – Boundary Additions

<i>Area</i>	<i>State</i>	<i>Approval Date</i>	<i>Acres</i>
Great Dismal Swamp NWR	North Carolina	06/12/08	342
Great Dismal Swamp NWR	Virginia	06/12/08	1,445
Lake Umbagog NWR	New Hampshire	06/12/08	434
Lake Umbagog NWR	Maine	06/12/08	2,911
Montezuma NWR	New York	09/09/08	220
San Bernard NWR	Texas	03/12/08	142
Silvio O. Conte NFWR - Mohawk River Division	New Hampshire	09/09/08	2,000
Silvio O. Conte NFWR - Pondicherry Division	New Hampshire	09/09/08	492
Trinity River NWR	Texas	09/09/08	924
Total			8,910

Price Approvals

<i>Area</i>	<i>State</i>	<i>Approval Date</i>	<i>Acres</i>
Bayou Sauvage NWR	Louisiana	09/09/08	2,027
Cache River NWR	Arkansas	09/09/08	24
Cape May NWR	New Jersey	03/12/08	280
Glacial Ridge NWR	Minnesota	06/12/08	18,118
Grasslands WMA	California	03/12/08	1,035
Great Dismal Swamp NWR	North Carolina	06/12/08	1,481
Lake Umbagog NWR	Maine	06/12/08	1,129
Mackay Island NWR	North Carolina	03/12/08	26
Montezuma NWR	New York	09/09/08	64
San Bernard NWR	Texas	03/12/08	142
Silvio O. Conte NFWR - Mohawk River Division	New Hampshire	09/09/08	108
Silvio O. Conte NFWR - Pondicherry Division	New Hampshire	09/09/08	105
Trinity River NWR	Texas	09/09/08	924
Tualatin River NWR - Wapato Lake Unit	Oregon	06/12/08	180
Tualatin River NWR - Wapato Lake Unit	Oregon	09/09/08	15
Waccamaw NWR	South Carolina	09/09/08	1,292
Total			26,950

Price Re-approvals

<i>Area</i>	<i>State</i>	<i>Approval Date</i>	<i>Acres</i>
Laccasine NWR	Louisiana	03/12/08	640
Total			640

Grand Total **129,918**

MBCF Land Acquisitions for Fiscal Year 2008

Land Contracted for Purchase, Permanent Easement, or Lease

Refuge Acquisition Program

Fee Title Acquisitions

<i>Area</i>	<i>State</i>	<i>Acres</i>	<i>Cost</i>
Assabet River NWR	Massachusetts	92	\$125,000
Bayou Savage NWR	Louisiana	2,072	\$1,112,500
Cache River NWR	Arkansas	1,140	\$1,499,500
Cape May NWR	New Jersey	70	\$904,000
Cat Island NWR	Louisiana	704	\$1,455,000
Glacial Ridge NWR	Minnesota	5,122	\$1,000,000
Lake Umbagog NWR	Maine	1,129	\$725,000
Lake Umbagog NWR	New Hampshire	216	\$165,000
Mackay Island NWR	North Carolina	22	\$219,300
North Central Valley WMA	California	427	\$756,000
Panther Swamp NWR	Mississippi	417	\$1,020,000
Rappahannock River Valley NWR	Virginia	178	\$731,000
Red Rock Lakes NWR	Montana	614	\$996,728
San Bernard NWR	Texas	143	\$296,200
Silvio O. Conte NFWR - Mill River Division	Massachusetts	33	\$44,000
Silvio O. Conte NFWR - Pondicherry Division	New Hampshire	102	\$175,000
Trinity River NWR	Texas	924	\$1,017,000
Tualatin River NWR - Wapato Lake Unit	Oregon	195	\$685,000
Wapanocca NWR	Arkansas	145	\$177,000
Total		13,745	\$13,103,228

Permanent Easement Acquisitions

<i>Area</i>	<i>State</i>	<i>Acres</i>	<i>Cost</i>
Grasslands WMA	California	1,035	\$2,827,000
Willow Creek - Lurline WMA	California	125	\$210,000
Total		1,160	\$3,037,000

Leases

<i>Area</i>	<i>State</i>	<i>Acres</i>	<i>Cost</i>
Cokeville Meadows NWR	Wyoming	787	\$4,114
Dahomey NWR	Mississippi	260	\$2,600
Halfbreed Lake NWR	Montana	640	\$1,512
Lacassine NWR	Louisiana	640	\$14,900
Lost Trail NWR	Montana	240	\$173
Ouray NWR	Utah	3,833	\$18,750
Panther Swamp NWR	Mississippi	640	\$16,320
Red Rock Lakes NWR	Montana	3,266	\$12,416
St. Catherine Creek NWR	Mississippi	502	\$12,553
Total		10,808	\$83,338

Refuge Acquisition Program Net Total		25,713	\$16,223,566
---	--	---------------	---------------------

Small Wetlands Acquisition Program: Waterfowl Production Areas

Permanent Easement Acquisitions

<i>State</i>	<i>Acres</i>	<i>Cost</i>
Minnesota	1,194	\$1,188,700
Montana	3,166	\$174,470
North Dakota	3,446	\$737,600
South Dakota	19,488	\$8,080,115
Total	27,294	\$10,180,885

Fee Title Acquisitions

<i>State</i>	<i>Acres</i>	<i>Cost</i>
Iowa	464	\$1,999,200
Minnesota	1,029	\$3,447,668
Montana	140	\$105,000
South Dakota	106	\$242,000
Wisconsin	152	\$823,000
Total	1,891	\$6,616,868

Leases

<i>State</i>	<i>Acres</i>	<i>Cost</i>
Montana	1,560	\$3,593
Total	1,560	\$3,593
Small Wetlands Acquisition Program Net Total	30,745	\$16,801,34
Grand Total	56,458	\$33,024,912

National Wildlife Refuge System

New Area and Boundary Addition Approvals

for Fiscal Year 2008

New Area Approvals

Bayou Savage National Wildlife Refuge

*St. Bernard and Orleans Parishes,
Louisiana*

Tualatin River National Wildlife Refuge

*Wapato Lake Unit
Washington and Yamhill Counties,
Oregon*

Waccamaw National Wildlife Refuge

*Georgetown, Marion, and Horry
Counties, South Carolina*

Boundary Addition Approvals

**Great Dismal Swamp National Wildlife
Refuge**

*Cities of Suffolk and Chesapeake,
Virginia, and Camden, Gates, and
Pasquotank Counties, North Carolina*

Lake Umbagog National Wildlife Refuge

*Coos County, New Hampshire, and
Oxford County, Maine*

Montezuma National Wildlife Refuge

Seneca County, New York

San Bernard National Wildlife Refuge

Brazoria County, Texas

**Silvio O. Conte National Fish and Wildlife
Refuge**

*Mohawk River Division
Coos County, New Hampshire*

**Silvio O. Conte National Fish and Wildlife
Refuge**

*Pondicherry Division
Coos County, New Hampshire*

Trinity River National Wildlife Refuge

Liberty County, Texas

National Wildlife Refuge System

New Area Boundary Approval

Bayou Sauvage National Wildlife Refuge *St. Bernard and Orleans Parishes, Louisiana*

On September 9, 2008, the Migratory Bird Conservation Commission (MBCC) approved the 34,536-acre Bayou Sauvage National Wildlife Refuge (NWR) boundary and granted price approval for the fee title acquisition of 2,027 acres.

Bayou Sauvage NWR is located between Lake Pontchartrain and Lake Borgne, within the city limits of New Orleans,

Louisiana. Over 60 percent of the refuge is freshwater emergent marsh and shrub/scrub forest enclosed by hurricane protection levees. The remaining unleveed portions of the refuge are estuarine tidal marshes and shallow water areas. Tens of thousands of ducks stop at the refuge during their winter migration. Gadwall, blue and green-winged teal, mallard, northern shoveler, northern pintail, wood duck, and scaup are most common. The wood duck, black-bellied whistling duck, and mottled duck species nest on the refuge.

The 2,027-acre tract approved for acquisition is known as Brazillier Island and is part of the last remaining land bridge between Lakes Pontchartrain and Borgne. The tract consists of 1,986 acres of brackish and fresh water marsh grass that supports high waterfowl numbers. With the acquisition of this tract, 72 percent of the refuge will have been acquired.

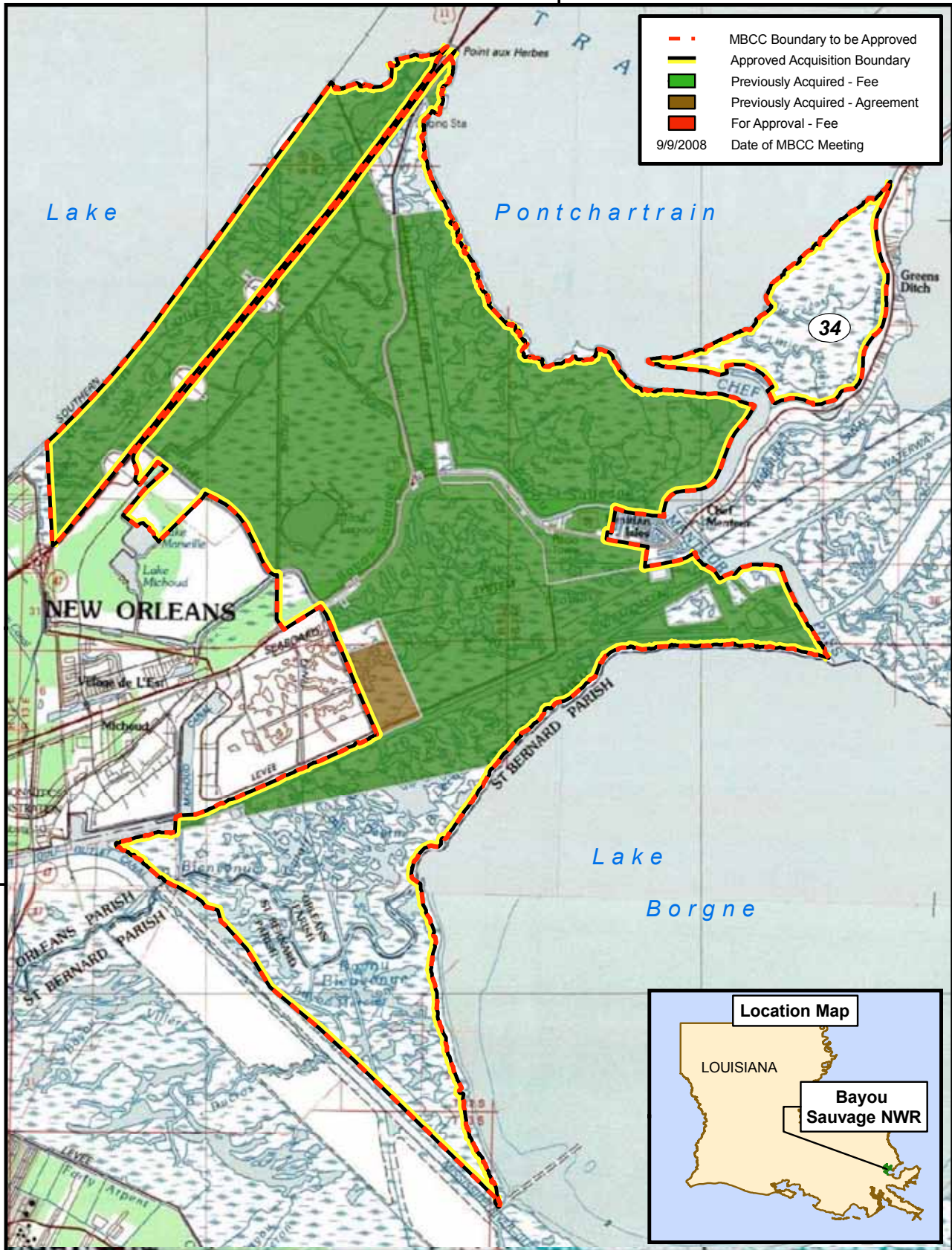


Bayou Sauvage National Wildlife Refuge

St. Bernard and Orleans Parishes, Louisiana

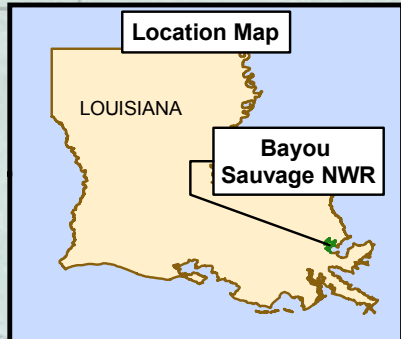
89°50'0"W

	MBCC Boundary to be Approved
	Approved Acquisition Boundary
	Previously Acquired - Fee
	Previously Acquired - Agreement
	For Approval - Fee
9/9/2008 Date of MBCC Meeting	

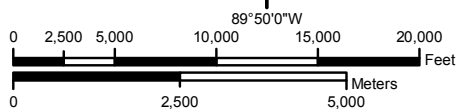


30°0'0"N

30°



Produced in the Division of Realty
 Atlanta, GA
 Land Status Current to: 8/6/2008
 Base Map Source: ArcGIS Online, 2008



1 inch equals 9,000 feet



National Wildlife Refuge System New Area Boundary Approval

Tualatin River National Wildlife Refuge

*Wapato Lake Unit
Washington and Yamhill Counties,
Oregon*

On June 12, 2008, the Migratory Bird Conservation Commission approved the 4,310-acre boundary of the Wapato Lake Unit of the Tualatin River National Wildlife Refuge, and granted price approval for the fee title acquisition of 180 acres, from three willing sellers.

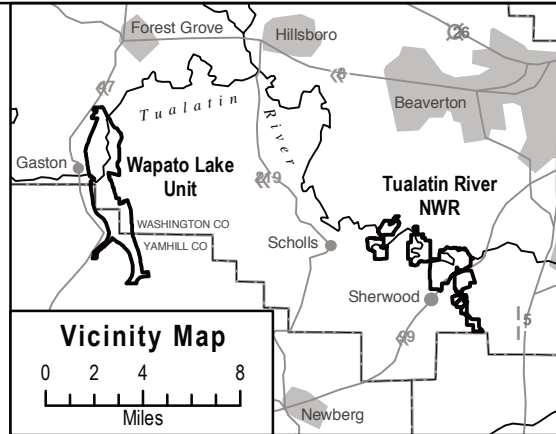
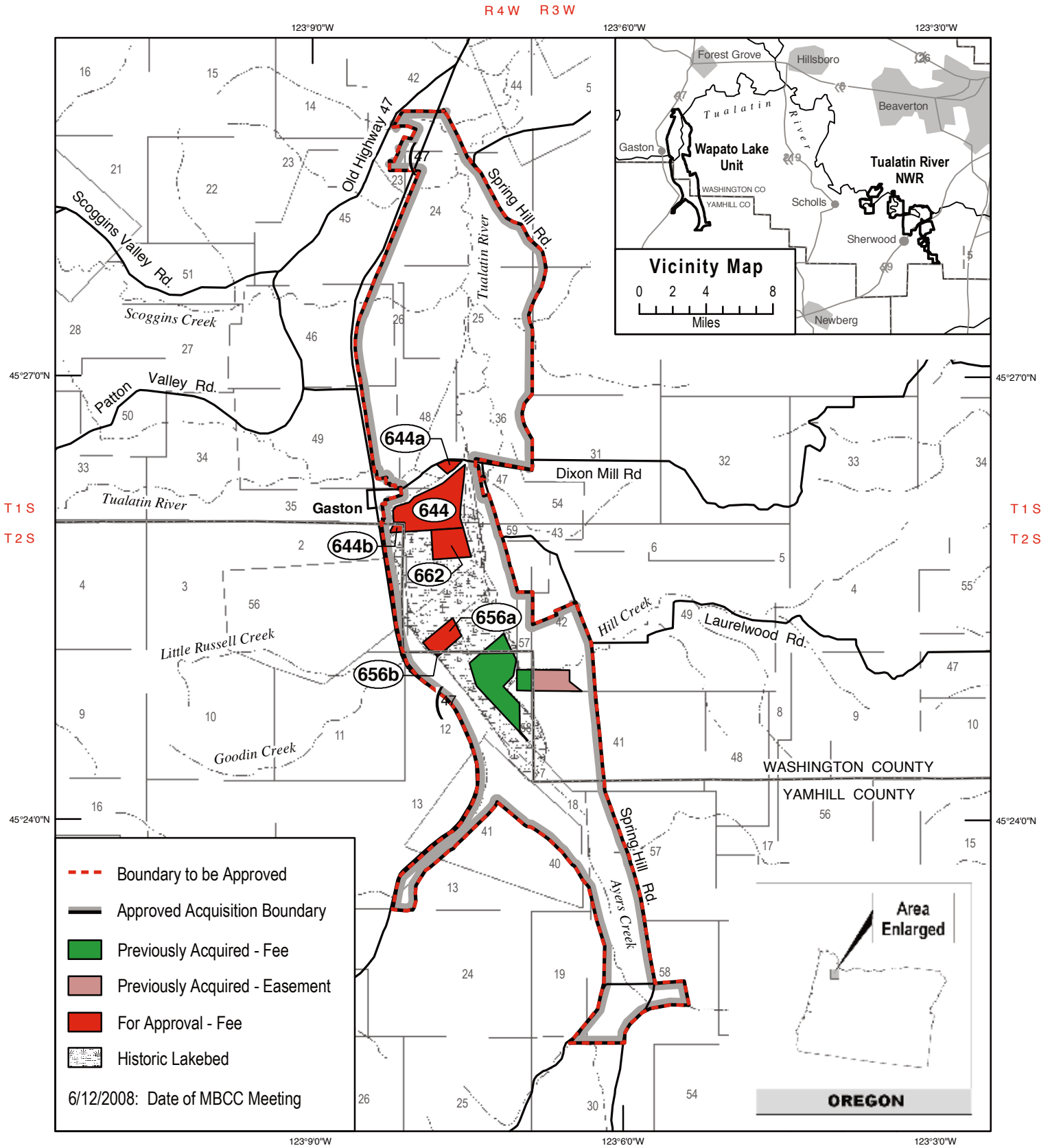
The Wapato Lake Unit is located in the northwest corner of the Willamette Valley of western Oregon, near the community of Gaston. It consists of imperiled Valley habitats including wetlands, meadow prairies, and a riverine complex of bottomland forest that support regionally and nationally important waterfowl species such as the tundra swan, mallard, northern pintail, canvasback, ring-necked duck, lesser scaup, and Canada goose, including dusky, lesser, Taverner, cackling, western, and Aleutian subspecies, and the Pacific white-fronted goose, which use the wetland complex.

The 180 acres approved for acquisition are located within the historic Wapato Lake lakebed. The rich, organic peat lakebed soils support a relic shrub wetland community fringed by Oregon ash and dense stands of wapato, an important food source for the tundra swan. The acquisition of these lands will protect and conserve the important wetland habitats that support a variety of waterfowl species in the Willamette Valley.



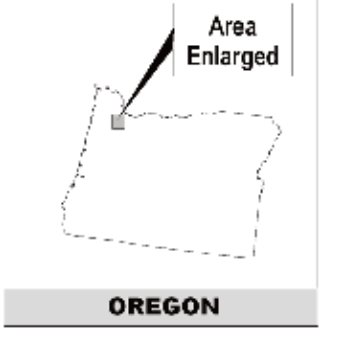
Tualatin River National Wildlife Refuge - Wapato Lake Unit

Washington and Yamhill Counties, Oregon

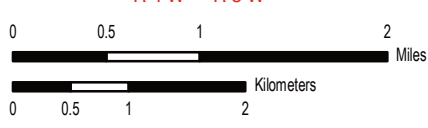


- Boundary to be Approved
- Approved Acquisition Boundary
- Previously Acquired - Fee
- Previously Acquired - Easement
- For Approval - Fee
- Historic Lakebed

6/12/2008: Date of MBCC Meeting



PRODUCED IN THE DIVISION OF REALTY & REFUGE INFORMATION
 PORTLAND, OREGON
 LAND STATUS CURRENT TO: 4/1/08
 MAP DATE: 4/15/08
 BASEMAP: ESRI DVD
 MERIDIAN: WILLAMETTE
 FILE: 08-071-1.MXD



National Wildlife Refuge System

New Area Boundary Approval

Waccamaw National Wildlife Refuge

Georgetown, Marion, and Horry Counties, South Carolina

On September 9, 2008, the Migratory Bird Conservation Commission approved the 54,572-acre Waccamaw National Wildlife Refuge (NWR) boundary, and granted price approval for the fee title acquisition of 1,292 acres.

Waccamaw NWR is located in the Winyah Bay drainage basin of the Great Pee Dee,

Little Pee Dee, and Waccamaw Rivers of South Carolina. The tidal freshwater wetlands are some of the most diverse freshwater wetlands found in North America and offer many important habitats for migratory birds, fish, and resident wildlife, and provide some of the most important waterfowl habitat in the southeast portion of the Atlantic Flyway. The American black duck, mallard, and northern pintail duck winter on the refuge, and the wood duck and hooded merganser nest on the refuge.

The 1,292-acre tract is located in Georgetown County in an area along the Big Pee Dee River that is one of the last areas in South Carolina to consistently winter the American black duck. It consists of alluvial bottomland hardwoods and a network of oxbow lakes, ephemeral creeks, and tidal lakes and sloughs, and provides excellent waterfowl wintering habitat for the American black duck, wood duck, and mallard.

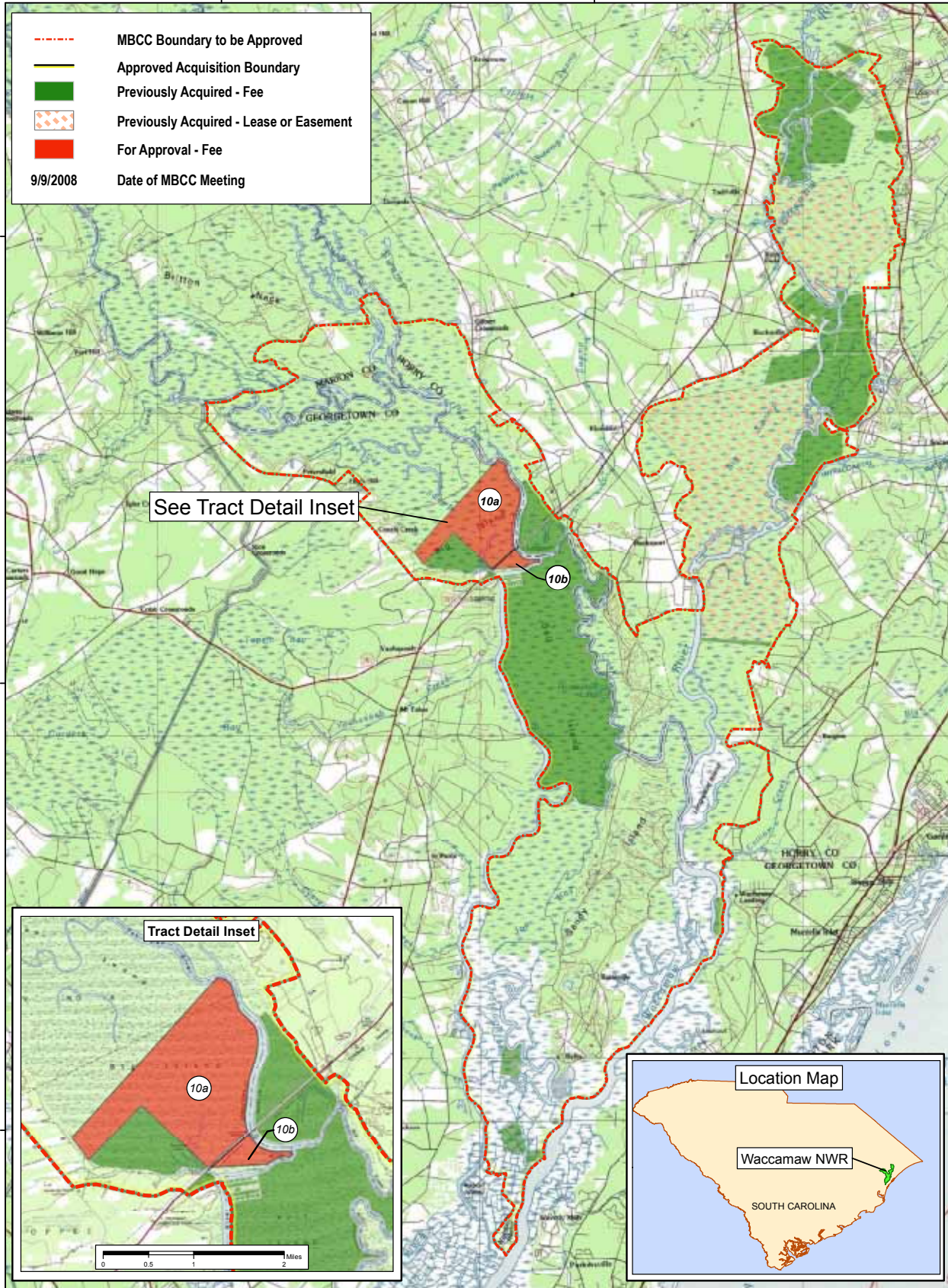


Waccamaw National Wildlife Refuge

Georgetown, Marion, and Horry Counties, South Carolina

79°15'0"W

79°7'30"W



33°45'0"N

33°45'0"N

33°37'30"N

33°37'30"N

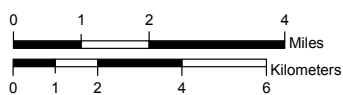
33°30'0"N

33°30'0"N

79°15'0"W

79°7'30"W

Produced in the Division of Realty
 Atlanta, GA
 Land Status Current to: 7/10/2008
 Base Map Source: ArcGIS Online, 2008



1 inch equals 7,000 feet



National Wildlife Refuge System Boundary Addition Approval

Great Dismal Swamp National Wildlife Refuge

Cities of Suffolk and Chesapeake, Virginia, and Camden, Gates, and Pasquotank Counties, North Carolina

On June 12, 2008, the Migratory Bird Conservation Commission granted boundary approval for 1,445 acres in Virginia and 342 acres in North Carolina at the Great Dismal Swamp National Wildlife Refuge (NWR). The Commission also granted price approval for the fee title acquisition of 1,481 acres in North Carolina.

Great Dismal Swamp NWR is located in the Mid-Atlantic coastal plain along the Virginia – North Carolina State line, southwest of Norfolk, Virginia. The refuge consists of large areas of forested wetlands and marsh areas that provide important nesting, feeding, and resting habitat for migratory waterfowl, including the American black duck, mallard, wood duck, and Canada goose, as well as neo-tropical land birds.

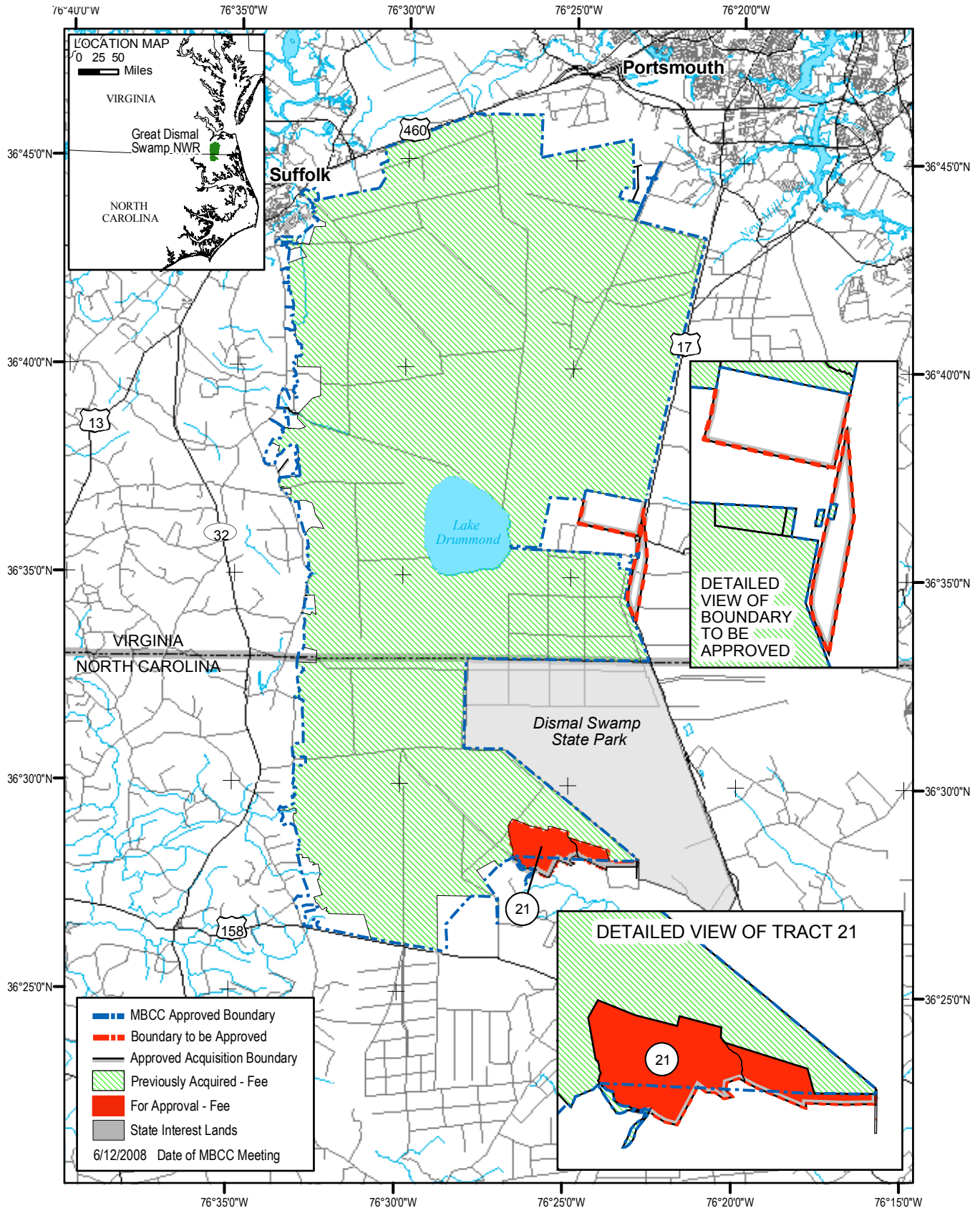
The 1,481-acre tract consists of native forested wetlands and remnant marsh.

Timber located on the property was harvested in phases from the mid 1990's through the early 2000's. The timber is currently in various stages of mixed forest re-growth, including lowlands that support tree species such as red maple, sweet gum, and cypress. The Service will protect and manage the native forested wetland communities and remnant marsh areas for waterfowl and neo-tropical land birds. Hunting and other public uses will also be permitted, as appropriate.



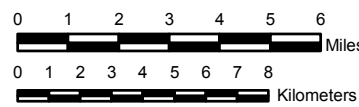
Great Dismal Swamp National Wildlife Refuge

Cities of Suffolk and Chesapeake, Virginia, and Camden, Gates, and Pasquotank Counties, North Carolina



- - - MBCC Approved Boundary
 - - - Boundary to be Approved
 - Approved Acquisition Boundary
 - Previously Acquired - Fee
 - For Approval - Fee
 - State Interest Lands
- 6/12/2008 Date of MBCC Meeting

Produced in the Division of Realty
 Hadley, MA
 Land Status Current to: 3/2005
 Base Map Sources: USGS DLG, ESRI Data
 Datum and Projection: UTM Zone 18, NAD 1983, Meters
 Map Compilation Date: 3/2008



National Wildlife Refuge System Boundary Addition Approval

Lake Umbagog National Wildlife Refuge *Coos County, New Hampshire, and Oxford County, Maine*

On June 12, 2008, the Migratory Bird Conservation Commission granted boundary approval for 434 acres in New Hampshire and 2,911 acres in Maine at the Lake Umbagog National Wildlife Refuge (NWR). The Commission also granted price approval for the fee title acquisition of 1,129 acres in Maine.

Lake Umbagog NWR is located on the northern New Hampshire/Maine border; 75 miles northwest of Portland, Maine, and 30 miles north of Berlin,

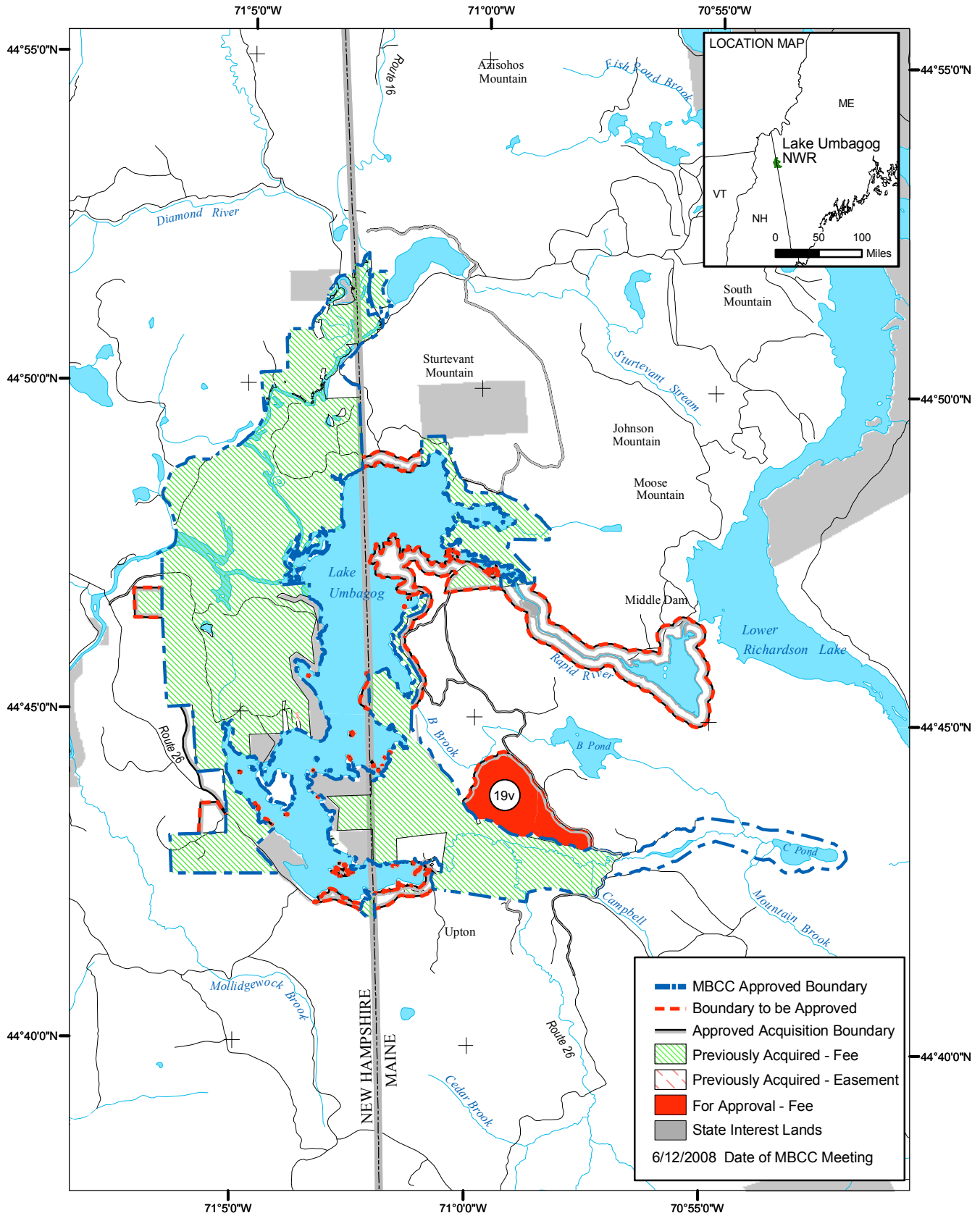
New Hampshire. The Lake Umbagog NWR project area includes one of the largest freshwater wetland complexes in New England. The lake and tributaries are bordered by extensive palustrine, lacustrine, and riverine wetlands recognized as some of the finest wildlife habitat in the States of New Hampshire and Maine. The refuge's forested wetlands provide breeding and nesting habitat for the American black duck, wood duck, common goldeneye, common and hooded merganser, ring-necked duck, blue- and green-winged teal, and mallard. The refuge also provides migration habitat for scaup, scoter, Canada goose, and other waterfowl species.

The 1,129-acre tract approved for acquisition includes a forested wetland complex and surrounding timberland adjacent to the Dead Cambridge River, including an area known as "Heywood Marsh." It consists of forested, shrub, and bog-like wetlands dominated by spruce, fir, and alder. Several beaver ponds with associated marsh and wet meadows, and adjacent cut-over forestland in various stages of re-growth, are also located on the tract. The Service plans to restore this tract, and protect the habitat for waterfowl and other migratory birds.



Lake Umbagog National Wildlife Refuge

Coos County, New Hampshire, and Oxford County, Maine



Produced in the Division of Realty
 Hadley, Massachusetts
 Land Status Current to: 2/2007
 Base Map Source: USGS DLG
 UTM Zone 19, NAD 1983, Meters
 Map Date: 3/2008



National Wildlife Refuge System Boundary Addition Approval

Montezuma National Wildlife Refuge *Seneca County, New York*

On September 9, 2008, the Migratory Bird Conservation Commission granted boundary approval for 220 acres at the Montezuma National Wildlife Refuge (NWR), and price approval for the fee title acquisition of 64 acres.

Montezuma NWR is located in north central New York, 35 miles west of

Syracuse. The refuge was established in 1938, for the protection of migratory waterfowl and other water birds. Through the years, the refuge has maintained and enhanced critical nesting, feeding, and resting habitat for waterfowl species including the American black duck, mallard, canvasback, lesser scaup, ring-necked duck, and Canada and snow goose.

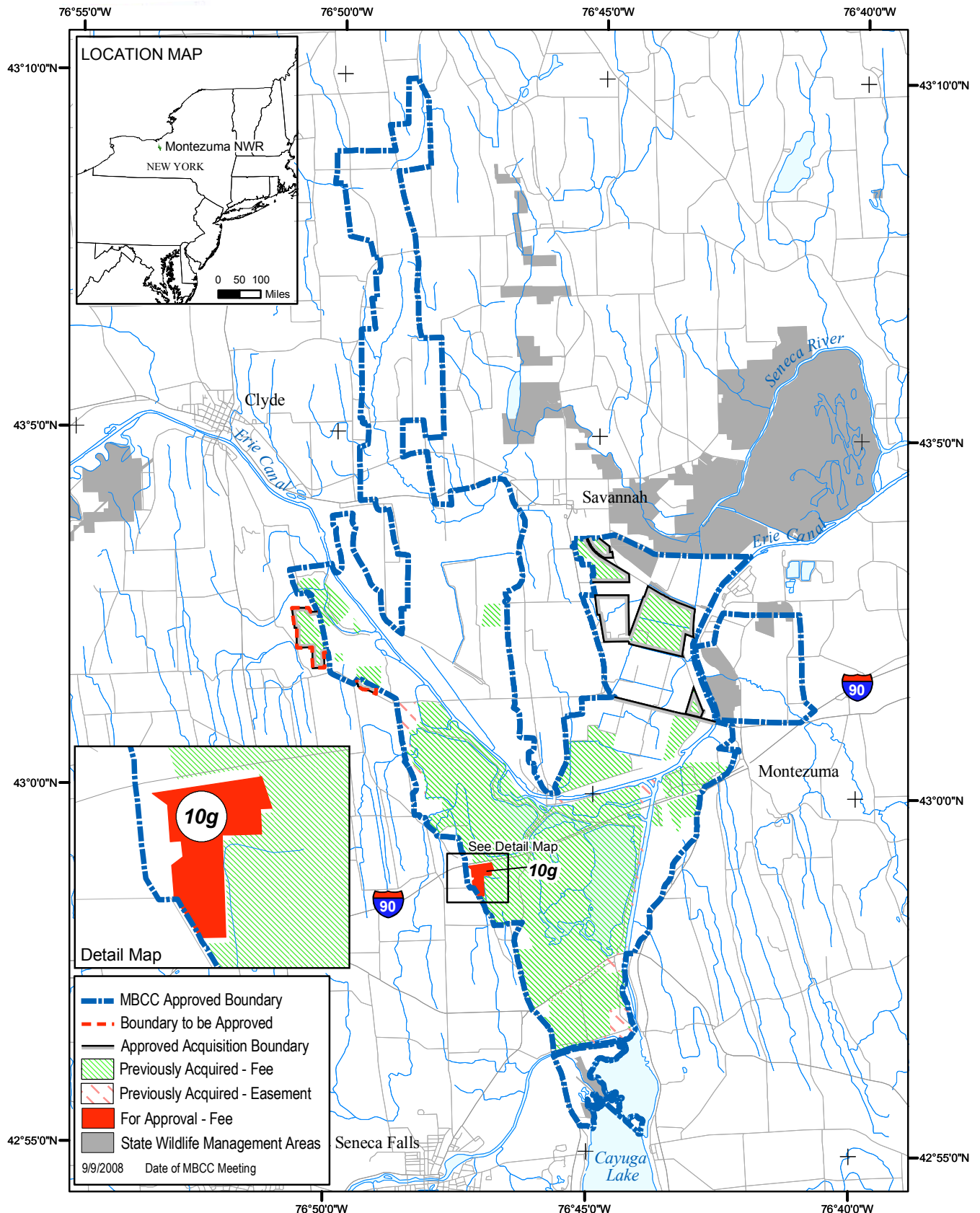
The 64-acre tract approved for acquisition abuts a flooded wetland that is part of

the refuge. The tract is comprised of wet grasses and sedges and some pasture and marginal agricultural land. The muckland soils of this area, when flooded, provide an excellent foundation for impoundments and moist soil units which create prime habitat for feeding and resting ducks and geese. The Service plans to re-connect and restore the tract to expand the wetland, creating a larger, more easily managed area for waterfowl.



Montezuma National Wildlife Refuge

Seneca County, New York



Produced in the Division of Realty
 Hadley, MA
 Land Status Current to: 5/2005
 Base Map Sources: USGS DLG, ESRI Data
 Datum and Projection: UTM Zone 18, NAD 1983, Meters
 Map Print Date: 7/2008



National Wildlife Refuge System Boundary Addition Approval

San Bernard National Wildlife Refuge

Brazoria County, Texas

On March 12, 2008, the Migratory Bird Conservation Commission granted boundary and price approval for the fee title acquisition of 142 acres at the Austin's Woods Unit of the San Bernard National Wildlife Refuge.

The Austin's Woods Unit is located 50 miles south of Houston, Texas. It consists

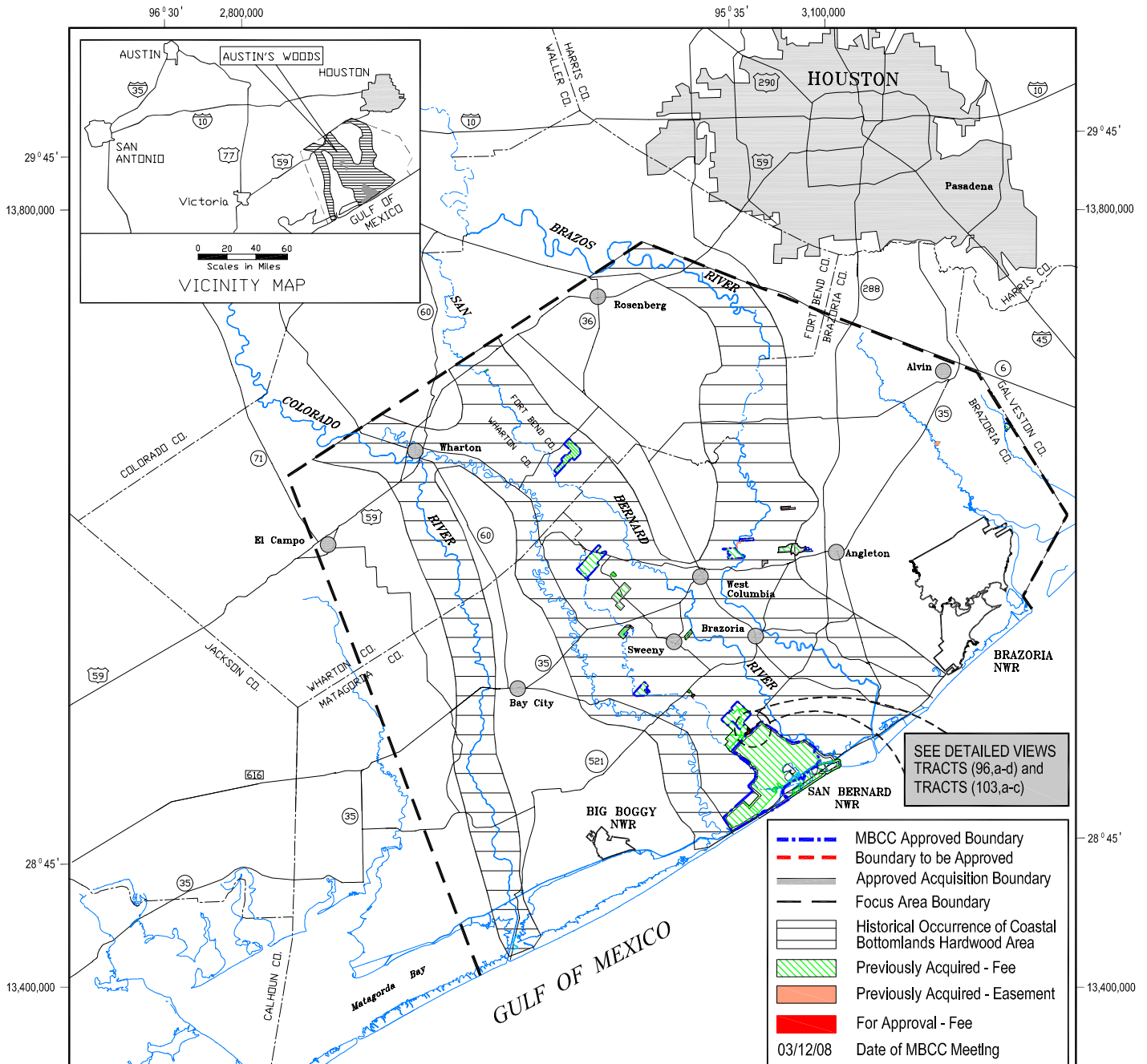
of a productive and valuable wetland complex providing habitat for migrating, wintering, and resident waterfowl, wading birds, neo-tropical migratory birds, and other wetland-dependent wildlife species. Thousands of waterfowl winter in the area, including mottled ducks, mallards, northern pintails, gadwalls, American wigeons, northern shovelers, blue- and green-winged teal, ruddy ducks, wood ducks, and fulvous and black-bellied whistling ducks.

The 142 acres approved for acquisition consist of forested wetlands, bottomland hardwood forest, and prairie grasslands. Cacklebur Slough, an important waterfowl and songbird area, is partially located in the acquisition area and provides important habitat for nesting and wintering waterfowl. The Service will manage the lands as waterfowl, wading bird, neo-tropical migrant, and other wildlife habitat.

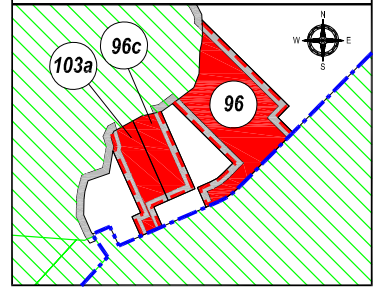


San Bernard National Wildlife Refuge - Austin's Woods Unit

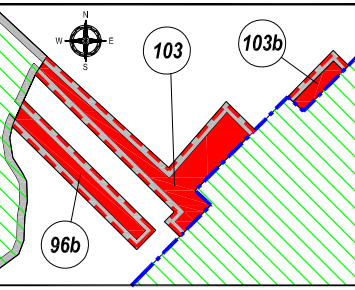
Brazoria, Fort Bend, Matagorda and Wharton Counties, Texas



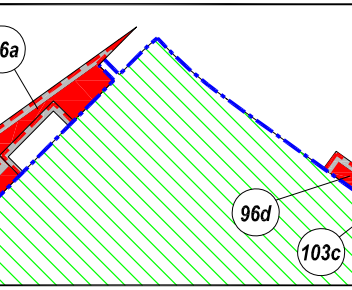
DETAILED VIEW OF TRACTS (96) (96c) (103a)



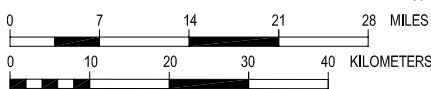
DETAILED VIEW OF TRACTS (96b) (103) (103b)



DETAILED VIEW OF TRACTS (96a) (96d) (103c)



Produced in the Division of Realty
 Albuquerque, NM
 Land Status Current to 02/08/2008
 Base Map: USGS DRGs and other official information
 Map Projection: NAD, 1983, TX State Plane, S-C Zone, U.S. Feet
 Map Date 02/08/2008



National Wildlife Refuge System Boundary Addition Approval

Silvio O. Conte National Fish and Wildlife Refuge

*Mohawk River Division
Coos County, New Hampshire*

On September 9, 2008, the Migratory Bird Conservation Commission granted boundary approval for the 2,000-acre Mohawk River Division of the Silvio O. Conte National Fish and Wildlife Refuge. The Commission also granted price approval for the fee title acquisition of 108 acres.

The Mohawk River Division (Division) is located east of the Town of Colebrook, south of State Highway 26, in the area known locally as Colebrook Hill Farms. The Service identified the Division as one of 65 Special Focus Areas important to migratory birds in the Connecticut River watershed. The Blueberry Swamp area is located in the Division and is comprised of a mosaic of forested wetlands, open agricultural fields, and both early successional and mature forests. This area is important for migrating and breeding waterfowl such as the American black

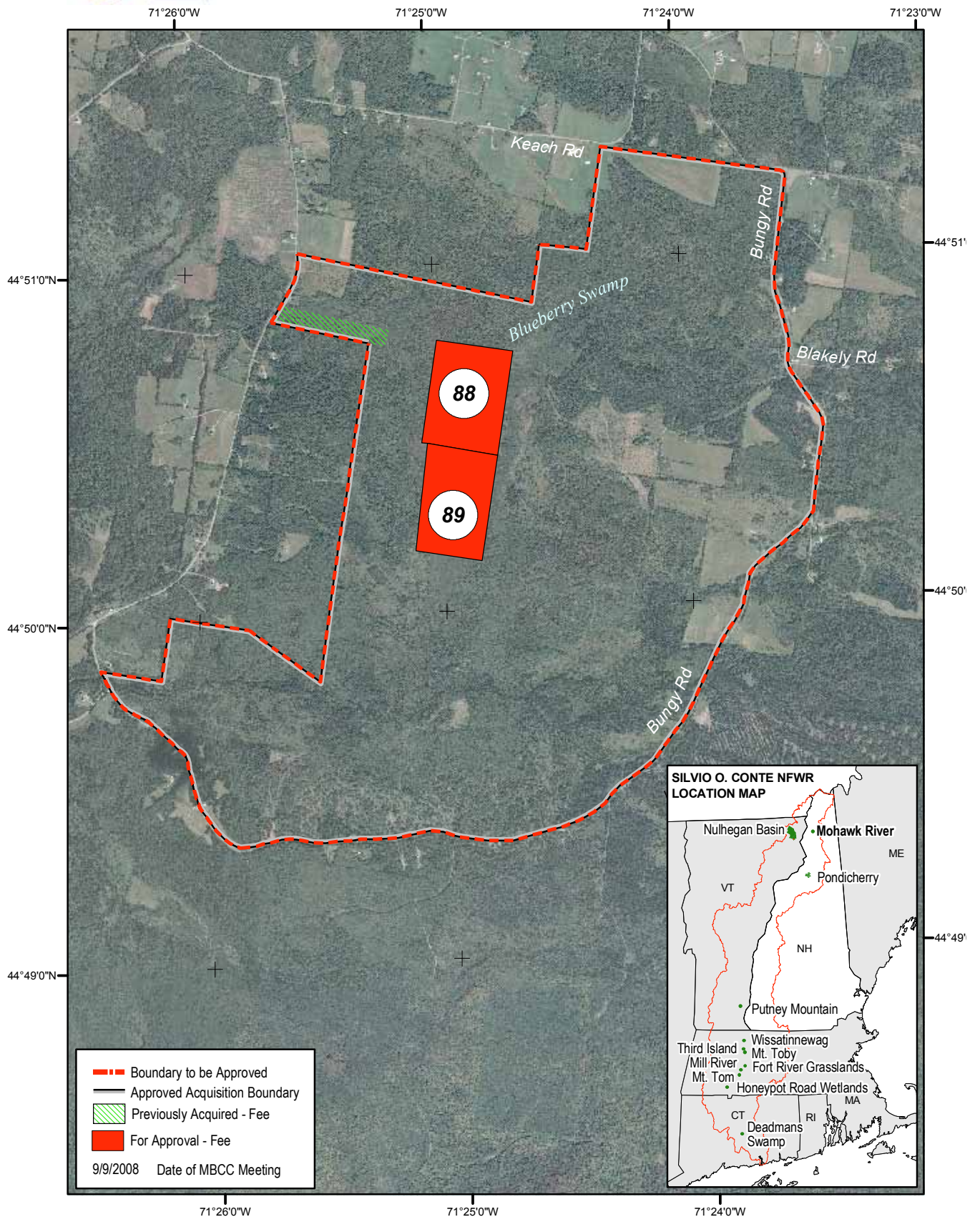
duck, and other migratory birds including the American woodcock, common snipe, wood thrush, blackburnian warbler, and black-throated blue warbler.

The 108 acres approved for acquisition are located in the heart of Blueberry Swamp and will be managed for the American black duck, American woodcock, and other migratory birds. The Service will offer compatible hunting, fishing, wildlife observation, photography, and environmental education and interpretation, as appropriate.

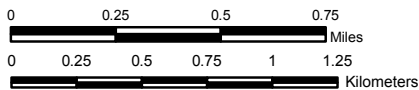


Silvio O. Conte National Fish and Wildlife Refuge - Mohawk River Division

Coos County, New Hampshire



Produced in the Division of Realty
 Hadley, MA
 Base Map Source: MassGIS DOQ
 Datum and Projection: UTM Zone 18, NAD 1983, Meters
 Map Print Date: 7/2008



National Wildlife Refuge System Boundary Addition Approval

Silvio O. Conte National Fish and Wildlife Refuge

*Pondicherry Division
Coos County, New Hampshire*

On September 9, 2008, the Migratory Bird Conservation Commission granted boundary approval for 492 acres at the Pondicherry Division of the Silvio O. Conte National Fish and Wildlife Refuge, and price approval for the fee title acquisition of 105 acres from The Nature Conservancy.

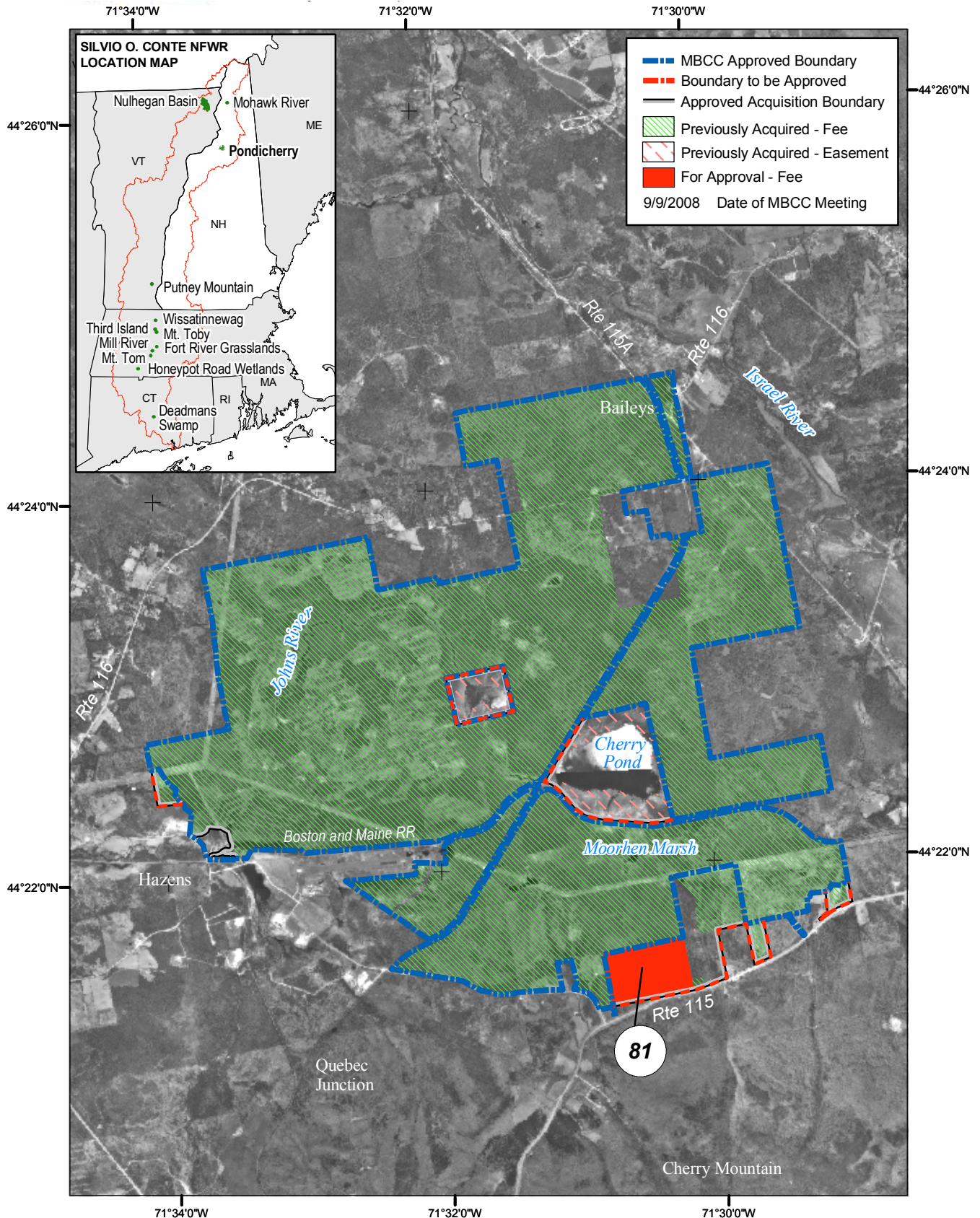
The Pondicherry Division (Division) is located 25 miles east of St. Johnsbury, Vermont. The Service also identified this Division as one of 65 Special Focus Areas important to migratory birds in the Connecticut River watershed. It is located in a basin that includes four ponds, the John's River; forested and emergent wetlands, bogs, spruce-fir forests, and northern mixed hardwood forest. This northern forest wetland complex provides habitat for the American black duck, wood duck, mallard, hooded merganser, blue-winged teal, and ring-necked duck.

The 105-acre tract consists primarily of forested wetlands and is located upland of Moorhen Marsh and Big Cherry Pond, north of State Route 115. The Service will manage the tract for the American black duck and other waterfowl species. The Service will also offer compatible hunting, fishing, wildlife observation, photography, and environmental education and interpretation, as appropriate.

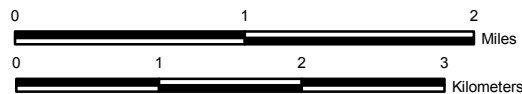


Silvio O. Conte National Fish and Wildlife Refuge - Pondicherry Division

Coos County, New Hampshire



Produced in the Division of Realty
 Hadley, Massachusetts
 Land Status Current to: 7/2006
 Base Map Source: NH GRANIT DOQ
 UTM Zone 18, NAD 1983, Meters
 Map Date: 7/2008



National Wildlife Refuge System Boundary Addition Approval

Trinity River National Wildlife Refuge

Liberty County, Texas

On September 9, 2008, the Migratory Bird Conservation Commission granted boundary and price approval for the fee title acquisition of 924 acres at the Trinity River National Wildlife Refuge (NWR).

Trinity River NWR is located 45 miles northeast of Houston in East Texas. The

refuge consists of remnant bottomland hardwood and associated wetland habitats that provide essential foraging and/or roosting habitat for the wood duck, mallard, gadwall, American wigeon, green- and blue-winged teal, and the lesser scaup.

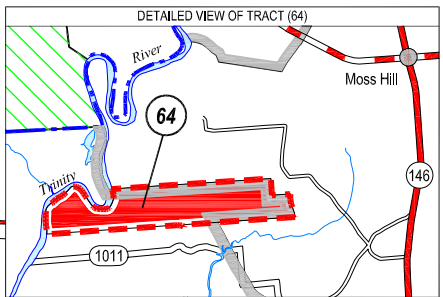
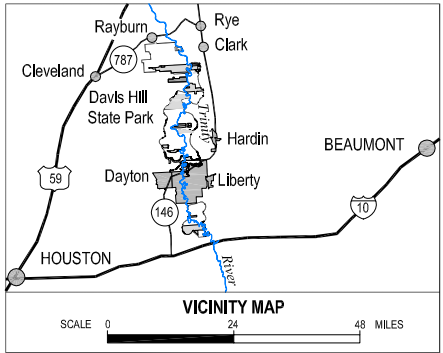
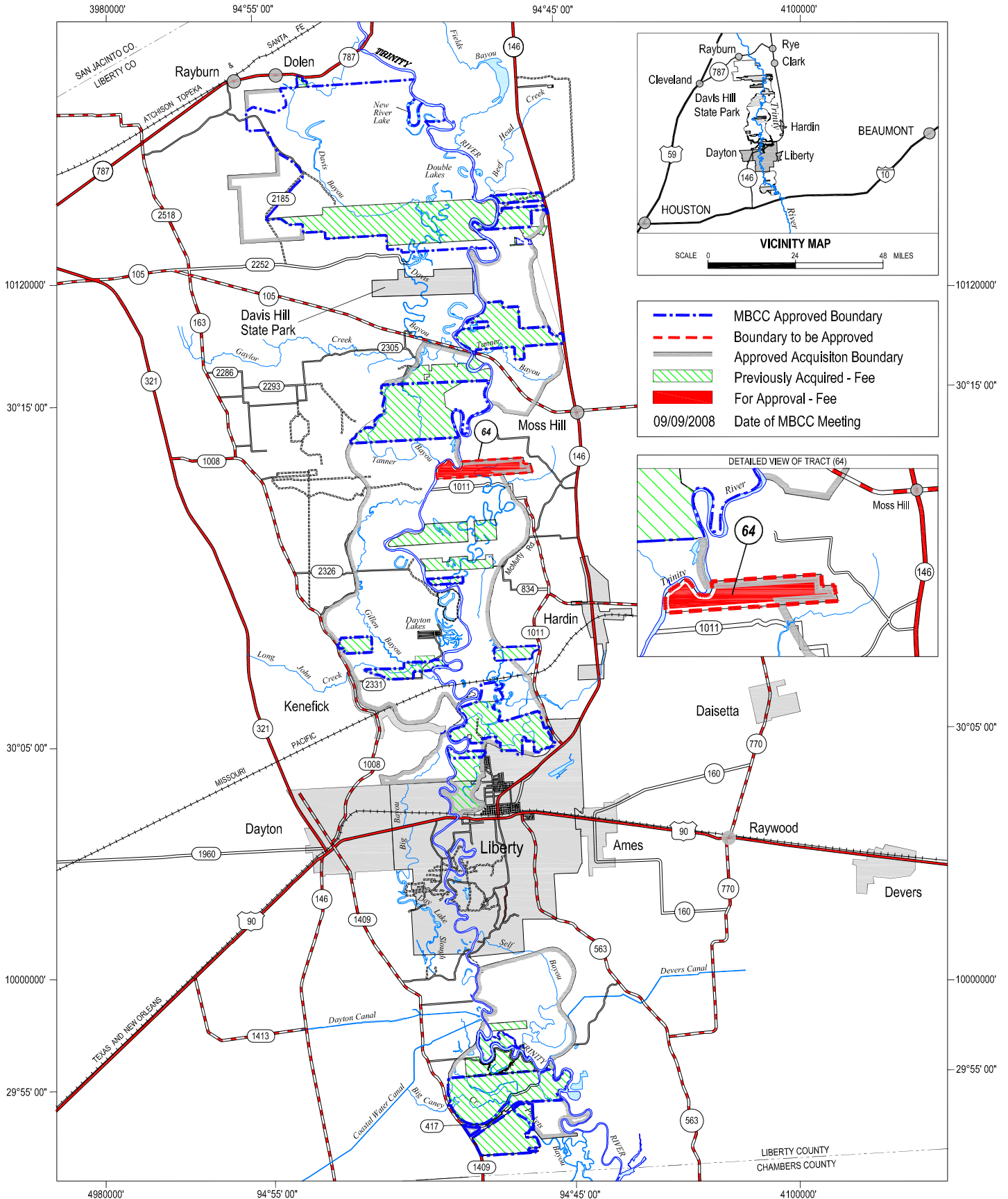
The 924-acre tract is located along the east bank of the Trinity River and consists of bottomland hardwood

forest. It contains permanently flooded bayous, sloughs, and seasonally flooded "bottoms." The Service will maintain and/or enhance the prime waterfowl habitat on this tract, and restore any degraded bottomland hardwood sites. The Service will also offer compatible hunting, fishing, wildlife observation, photography, and environmental education and interpretation, as appropriate.

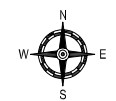
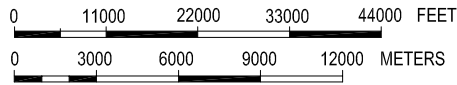


Trinity River National Wildlife Refuge

Liberty County, Texas



Produced in the Division of Realty
 Albuquerque, New Mexico
 Land Status Current to 07/09/2008
 Base Map: U.S.G.S. DRGs and other official information
 Map Projection: NAD, 1983, TX State Plane, C- Zone, U.S. Feet
 Map Date: 01/09/2008
 Revised: 07/31/2008



National Migratory Bird Refuge Areas and Waterfowl Production Areas

Notes on Tables One and Two

The information contained in this report includes those acquisitions and dispositions of land and interests therein that are purchased with Migratory Bird Conservation Fund monies or acquired under the authority of the Migratory Bird Conservation Act. It also includes other migratory bird areas such as those that are transferred to the Fish and Wildlife Service under the authority of Public Law 80-537 to carry out a migratory bird management program (these will appear on Table One).

In an ongoing effort to improve data quality, the figures in Tables One and Two may show minor changes from previous annual reports. Lands in which the Service previously acquired a less-than-fee interest (leases and easements) may be purchased in fee during the year, and

the number of easement or lease acres will show a decrease and the number of purchased acres will show an increase. The acreage appearing in the MBCC Approvals and MBCF Land Acquisitions sections of this report will not appear in Tables One or Two until after the tracts are acquired and the funds are expended. Also, a newly approved refuge will not appear on Table One until a tract is acquired.

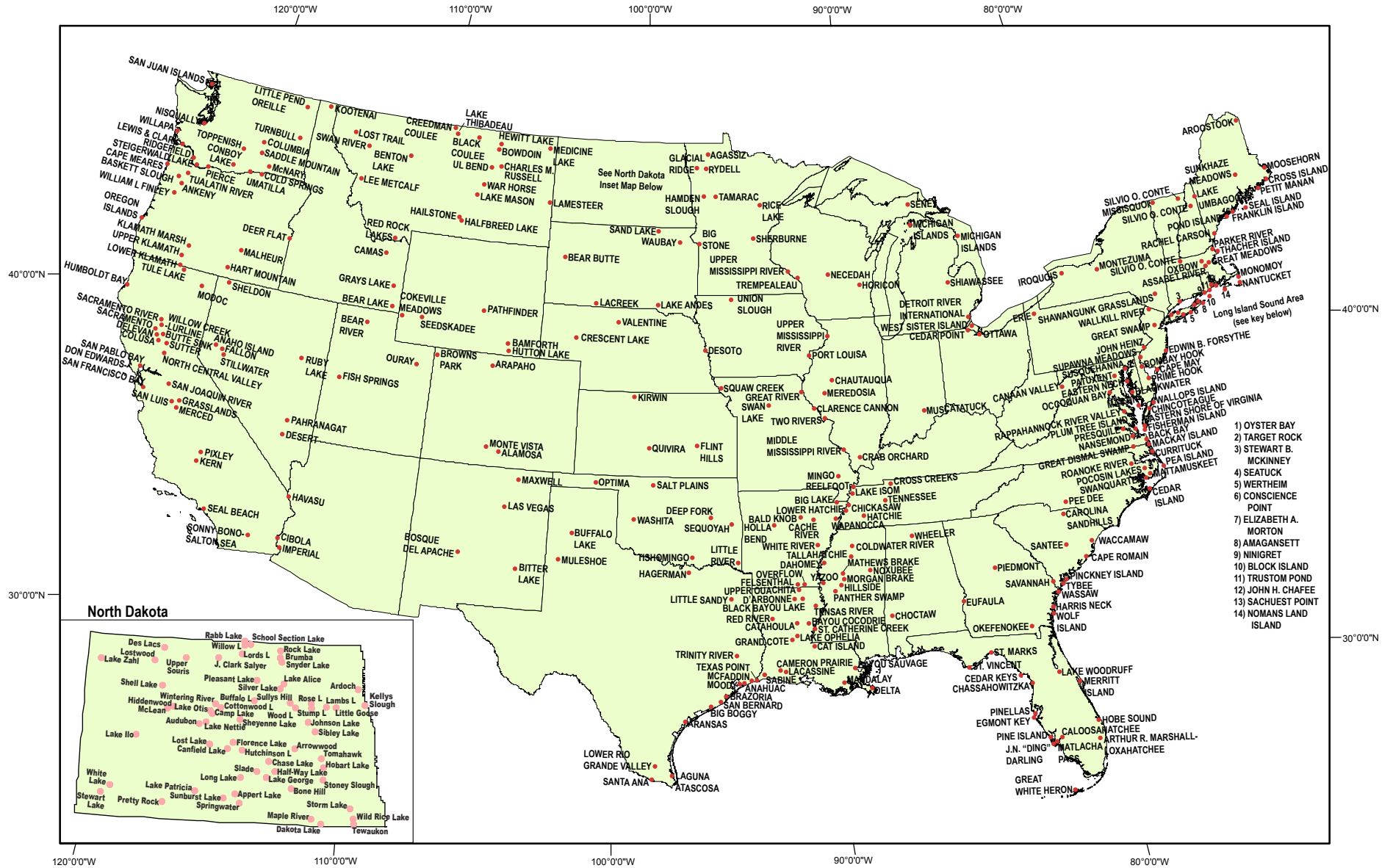
For information on all lands and interests under U.S. Fish and Wildlife Service control, refer to the Annual Report of Lands Under Control of the U.S. Fish and Wildlife Service. The Annual Report can be obtained from the U.S. Fish and Wildlife Service Division of Realty at <http://realty.fws.gov>, or by calling (703) 358-1713.



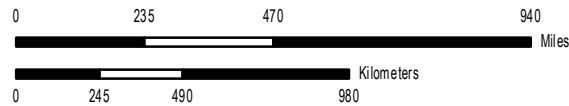


U.S. Fish & Wildlife Service National Migratory Bird Refuges

Migratory Bird Conservation Commission



PRODUCED IN THE DIVISION OF REALTY
WASHINGTON, D.C.
LAND STATUS CURRENT TO: 9/30/2008
MAP DATE: 11/26/2008
BASEMAP: ESRI
FILE: mbc c2008.ai



ANNUAL REPORT OF THE MIGRATORY BIRD CONSERVATION COMMISSION
MIGRATORY BIRD CONSERVATION FUND ACQUISITIONS
TABLE ONE
NATIONAL MIGRATORY BIRD AREAS IN THE CONTINUOUS UNITED STATES

STATE AND UNIT	FISCAL YEAR MBCF ACQUISITION				CUMULATIVE TOTALS AT END OF FISCAL YEAR						
	PURCHASED		EASEMENT OR LEASE		MBCF				ALL OTHER ACRES	TOTAL ACRES	
	ACRES	COST	ACRES	COST	ACRES	COST	ACRES	COST			
ALABAMA											
CHOCTAW	0.00	0.00	0.00	0.00	0.00	0.00	0.00	0.00	0.00	4,218.00	4,218.00
EUFAULA (1)	0.00	0.00	0.00	0.00	0.00	0.00	0.00	0.00	0.00	7,953.19	7,953.19
FSA INTEREST AL ** *	0.00	0.00	0.00	0.00	0.00	0.00	0.00	0.00	0.00	742.69	742.69
WHEELER	0.00	0.00	0.00	0.00	0.00	0.00	0.00	0.00	0.00	34,430.66	34,430.66
STATE TOTAL 3	0.00	0.00	0.00	0.00	0.00	0.00	0.00	0.00	0.00	47,344.54	47,344.54
ARIZONA											
CIBOLA (2)	0.00	0.00	0.00	0.00	0.00	0.00	0.00	0.00	0.00	13,199.34	13,199.34
HAVASU (2)	0.00	0.00	0.00	0.00	0.00	0.00	0.00	0.00	0.00	30,279.82	30,279.82
IMPERIAL (2)	0.00	0.00	0.00	0.00	0.00	0.00	0.00	0.00	0.00	17,809.76	17,809.76
STATE TOTAL 3	0.00	0.00	0.00	0.00	0.00	0.00	0.00	0.00	0.00	61,288.92	61,288.92
ARKANSAS											
BALD KNOB	0.00	0.00	0.00	0.00	4,748.40	3,427,000.00	0.00	0.00	0.00	10,273.95	15,022.35
BIG LAKE	0.00	0.00	0.00	0.00	562.91	31,854.69	0.25	3.00	0.00	10,472.94	11,036.10
CACHE RIVER	516.22	1,806,335.00	0.00	0.00	48,475.77	45,691,786.92	0.00	0.00	0.00	18,529.05	67,004.82
FELSENTHAL	0.00	0.00	0.00	0.00	0.00	0.00	0.00	0.00	0.00	64,902.14	64,902.14
FSA INTEREST AR ** *	0.00	0.00	0.00	0.00	0.00	0.00	0.00	0.00	0.00	3,458.67	3,458.67
HOLLA BEND	0.00	0.00	0.00	0.00	690.45	336,903.00	0.00	5,175.00	0.00	5,608.58	6,299.03
OVERFLOW	0.00	0.00	0.00	0.00	13,416.75	10,943,020.50	9.60	0.00	0.00	0.00	13,426.35
WAPANOCCA	145.08	177,000.00	0.00	0.00	5,629.25	1,528,416.00	0.00	0.00	0.00	0.00	5,629.25
WHITE RIVER	0.00	0.00	0.00	0.00	10,371.88	5,714,145.37	413.22	22.00	0.00	148,190.97	158,976.07
STATE TOTAL 8	661.30	1,983,335.00	0.00	0.00	83,895.41	67,673,126.48	423.07	5,200.00	0.00	261,436.30	345,754.78
CALIFORNIA											
BUTTE SINK	0.00	0.00	0.00	0.00	514.98	1,650,700.00	10,310.64	12,816,903.00	0.00	217.88	11,043.50
CIBOLA (3) *	0.00	0.00	0.00	0.00	0.00	0.00	0.00	0.00	0.00	5,245.33	5,245.33
COLUSA	0.00	0.00	0.00	0.00	2,384.74	107,313.30	0.00	0.00	0.00	1,655.24	4,039.98
DELEVAN	0.00	0.00	0.00	0.00	5,796.54	2,345,739.00	0.00	175,000.00	0.00	0.00	5,796.54
DON EDWARDS SAN FRAN. BAY	0.00	0.00	0.00	0.00	0.00	0.00	0.00	0.00	0.00	30,228.25	30,228.25
FSA INTEREST CA ** *	0.00	0.00	0.00	0.00	0.00	0.00	0.00	0.00	0.00	6,673.24	6,673.24
GRASSLANDS	0.00	0.00	1,184.00	3,060,000.00	6,442.28	9,158,896.00	71,655.02	37,277,459.00	0.00	12,098.97	90,196.27
HAVASU (3) *	0.00	0.00	0.00	0.00	0.00	0.00	0.00	0.00	0.00	7,235.34	7,235.34
HUMBOLDT BAY	0.00	0.00	0.00	0.00	2,717.60	5,254,410.00	0.00	0.00	0.00	662.18	3,379.78
IMPERIAL (3) *	0.00	0.00	0.00	0.00	0.00	0.00	0.00	0.00	0.00	8,198.19	8,198.19
KERN	0.00	0.00	0.00	0.00	10,543.86	579,912.00	0.00	0.00	0.00	705.31	11,249.17
LOWER KLAMATH (4)	0.00	0.00	0.00	0.00	4,530.53	3,390,123.00	0.00	0.00	0.00	39,764.02	44,294.55
MERCED	0.00	0.00	0.00	0.00	3,803.82	2,180,000.00	0.00	0.00	0.00	1.76	3,805.58
MODOC	0.00	0.00	0.00	0.00	5,359.58	1,077,634.19	0.00	0.00	0.00	1,661.65	7,021.23
NORTH CENTRAL VALLEY	0.00	0.00	107.20	220,000.00	645.60	1,845,531.00	9,075.82	14,027,556.00	0.00	7,239.72	16,961.14
PIXLEY	0.00	0.00	0.00	0.00	0.00	0.00	0.00	0.00	0.00	6,970.16	6,970.16
SACRAMENTO	0.00	0.00	0.00	0.00	10,775.61	150,498.00	0.00	0.00	0.00	43.39	10,819.00
SACRAMENTO RIVER	0.00	0.00	0.00	0.00	126.40	145,000.00	0.00	0.00	0.00	11,428.76	11,555.16
SAN JOAQUIN RIVER	0.00	0.00	0.00	0.00	1,239.18	7,030,819.00	0.00	0.00	0.00	8,855.44	10,094.62
SAN LUIS	0.00	0.00	0.00	0.00	7,422.41	2,171,055.00	703.00	2,284,000.00	0.00	10,337.00	18,462.41
SAN PABLO BAY	0.00	0.00	0.00	0.00	248.00	243,400.00	0.00	0.00	0.00	12,941.72	13,189.72
SEAL BEACH	0.00	0.00	0.00	0.00	0.00	0.00	0.00	0.00	0.00	910.71	910.71
SONNY BONO SALTON SEA	0.00	0.00	0.00	0.00	9,342.14	294,461.80	637.00	1,089.27	0.00	27,679.73	37,658.87
SUTTER	0.00	0.00	0.00	0.00	2,590.16	291,281.80	0.00	3,850.00	0.00	0.00	2,590.16
TULE LAKE	0.00	0.00	0.00	0.00	0.00	0.00	0.00	0.00	0.00	39,116.58	39,116.58
WILLOW CREEK-LURLINE	0.00	0.00	0.00	0.00	0.00	0.00	5,666.50	6,971,833.00	0.00	0.00	5,666.50
STATE TOTAL 22	0.00	0.00	1,291.20	3,280,000.00	74,483.43	37,916,774.09	98,047.98	73,557,690.27	0.00	239,870.57	412,401.98
COLORADO											
ALAMOSA	0.00	0.00	0.00	0.00	10,904.78	2,377,463.16	0.00	24,035.90	0.00	1,121.59	12,026.37
ARAPAHO	0.00	0.00	0.00	0.00	17,811.33	4,798,286.00	23.23	35,358.66	0.00	5,436.84	23,271.40
BROWNS PARK	0.00	0.00	0.00	0.00	5,275.63	614,976.00	1,305.42	68,118.76	0.00	6,874.25	13,455.30
FSA INTEREST CO ** *	0.00	0.00	0.00	0.00	0.00	0.00	0.00	0.00	0.00	1,206.64	1,206.64
MONTE VISTA	0.00	0.00	0.00	0.00	13,950.66	2,241,750.00	0.00	0.00	0.00	883.33	14,833.99
STATE TOTAL 4	0.00	0.00	0.00	0.00	47,942.40	10,032,475.16	1,328.65	127,513.32	0.00	15,522.65	64,793.70

ANNUAL REPORT OF THE MIGRATORY BIRD CONSERVATION COMMISSION
MIGRATORY BIRD CONSERVATION FUND ACQUISITIONS
TABLE ONE
NATIONAL MIGRATORY BIRD AREAS IN THE CONTINUOUS UNITED STATES

STATE AND UNIT	FISCAL YEAR MBCF ACQUISITION				CUMULATIVE TOTALS AT END OF FISCAL YEAR						
	PURCHASED		EASEMENT OR LEASE		MBCF				ALL OTHER ACRES	TOTAL ACRES	
	ACRES	COST	ACRES	COST	ACRES	COST	ACRES	COST			
CONNECTICUT											
STEWART B. MCKINNEY	0.00	0.00	0.00	0.00	327.04	2,263,560.00	34.20	0.00	590.24	951.48	
STATE TOTAL 1	0.00	0.00	0.00	0.00	327.04	2,263,560.00	34.20	0.00	590.24	951.48	
DELAWARE											
BOMBAY HOOK	0.00	0.00	0.00	0.00	15,204.42	1,544,738.56	74.06	75,001.00	779.28	16,057.76	
FSA INTEREST DE ** *	0.00	0.00	0.00	0.00	0.00	0.00	0.00	0.00	2.60	2.60	
PRIME HOOK	0.00	0.00	0.00	0.00	8,204.67	3,620,268.16	151.19	5,346.20	1,775.95	10,131.81	
STATE TOTAL 2	0.00	0.00	0.00	0.00	23,409.09	5,165,006.72	225.25	80,347.20	2,557.83	26,192.17	
FLORIDA											
ARTHUR R. MARSHALL	0.00	0.00	0.00	0.00	2,549.77	118,511.97	0.00	0.00	141,404.00	143,953.77	
CALOOSAHATCHEE	0.00	0.00	0.00	0.00	0.00	0.00	0.00	0.00	40.00	40.00	
CEDAR KEYS	0.00	0.00	0.00	0.00	0.00	0.00	0.00	0.00	891.15	891.15	
CHASSAHOWITZKA	0.00	0.00	0.00	0.00	22,556.82	267,529.26	0.00	0.00	8,286.09	30,842.91	
EGMONT KEY	0.00	0.00	0.00	0.00	0.00	0.00	0.00	0.00	328.30	328.30	
FSA INTEREST FL ** *	0.00	0.00	0.00	0.00	0.00	0.00	0.00	0.00	3,057.15	3,057.15	
GREAT WHITE HERON	0.00	0.00	0.00	0.00	1,326.54	906,195.00	0.00	0.00	116,394.09	117,720.63	
HOBE SOUND	0.00	0.00	0.00	0.00	0.00	0.00	0.00	0.00	1,035.18	1,035.18	
J. N. DING DARLING	0.00	0.00	0.00	0.00	541.98	372,370.00	0.00	0.00	5,864.81	6,406.79	
LAKE WOODRUFF	0.00	0.00	0.00	0.00	18,413.39	1,340,310.75	0.00	0.00	3,145.63	21,559.02	
MATLACHA PASS	0.00	0.00	0.00	0.00	0.00	0.00	0.00	0.00	538.25	538.25	
MERRITT ISLAND	0.00	0.00	0.00	0.00	0.00	0.00	0.00	0.00	139,190.80	139,190.80	
OKEFENOKEE (1)	0.00	0.00	0.00	0.00	0.00	0.00	0.00	0.00	3,724.48	3,724.48	
PINE ISLAND	0.00	0.00	0.00	0.00	0.00	0.00	0.00	0.00	602.24	602.24	
PINELLAS	0.00	0.00	0.00	0.00	0.00	0.00	0.00	0.00	394.35	394.35	
ST. MARKS	0.00	0.00	0.00	0.00	30,985.17	102,311.61	0.00	0.00	38,211.58	69,196.75	
ST. VINCENT	0.00	0.00	0.00	0.00	12,358.20	2,035,000.00	0.00	0.00	131.73	12,489.93	
STATE TOTAL 16	0.00	0.00	0.00	0.00	88,731.87	5,142,228.59	0.00	0.00	463,239.83	551,971.70	
GEORGIA											
EUFAULA (5) *	0.00	0.00	0.00	0.00	0.00	0.00	0.00	0.00	3,231.00	3,231.00	
FSA INTEREST GA ** *	0.00	0.00	0.00	0.00	0.00	0.00	0.00	0.00	4,940.33	4,940.33	
HARRIS NECK	0.00	0.00	0.00	0.00	0.00	0.00	0.00	0.00	2,822.68	2,822.68	
OKEFENOKEE (6) *	0.00	0.00	0.00	0.00	344,341.83	867,318.12	0.00	0.00	54,007.02	398,348.85	
PIEDMONT	0.00	0.00	0.00	0.00	473.97	44,000.00	0.00	0.00	34,493.01	34,966.98	
SAVANNAH (7)	0.00	0.00	0.00	0.00	8,027.84	1,705,352.40	0.00	0.00	6,135.64	14,163.48	
WASSAW	0.00	0.00	0.00	0.00	0.00	0.00	0.00	0.00	10,053.30	10,053.30	
WOLF ISLAND	0.00	0.00	0.00	0.00	4,587.82	120,813.52	0.00	0.00	538.00	5,125.82	
STATE TOTAL 5	0.00	0.00	0.00	0.00	357,431.46	2,737,484.04	0.00	0.00	116,220.98	473,652.44	
IDAHO											
BEAR LAKE	0.00	0.00	0.00	0.00	626.57	212,279.30	0.00	1.00	17,459.01	18,085.58	
CAMAS	0.00	0.00	0.00	0.00	10,438.46	202,700.84	0.00	0.00	139.88	10,578.34	
DEER FLAT (4)	0.00	0.00	0.00	0.00	242.89	26,415.50	0.00	0.00	10,304.68	10,547.57	
FSA INTEREST ID ** *	0.00	0.00	0.00	0.00	0.00	0.00	0.00	0.00	1,249.57	1,249.57	
GRAYS LAKE	0.00	0.00	0.00	0.00	4,069.78	1,843,000.00	32.49	4,518.30	16,022.81	20,125.08	
KOOTENAI	0.00	0.00	0.00	0.00	2,774.15	708,100.00	0.00	0.00	0.14	2,774.29	
STATE TOTAL 5	0.00	0.00	0.00	0.00	18,151.85	2,992,495.64	32.49	4,519.30	45,176.09	63,360.43	
ILLINOIS											
CHAUTAUQUA	0.00	0.00	0.00	0.00	44.54	2,525.38	34.99	0.00	6,401.03	6,480.56	
CRAB ORCHARD	0.00	0.00	0.00	0.00	651.07	0.00	0.00	0.00	43,258.35	43,909.42	
FSA INTEREST IL ** *	0.00	0.00	0.00	0.00	0.00	0.00	0.00	0.00	335.40	335.40	
GREAT RIVER (8)	0.00	0.00	0.00	0.00	1,559.87	353,202.72	0.00	0.00	5,550.76	7,110.63	
MEREDOSIA	0.00	0.00	0.00	0.00	0.00	0.00	0.00	0.00	3,400.80	3,400.80	
MIDDLE MISSISSIPPI RIVER (8)	0.00	0.00	0.00	0.00	0.00	0.00	0.00	0.00	5,919.20	5,919.20	
PORT LOUISA (19)	0.00	0.00	0.00	0.00	0.00	0.00	0.00	0.00	1,470.89	1,470.89	
TWO RIVERS (8)	0.00	0.00	0.00	0.00	796.17	346,943.75	0.00	0.00	7,237.03	8,033.20	
STATE TOTAL 7	0.00	0.00	0.00	0.00	3,051.65	702,671.85	34.99	0.00	73,573.46	76,660.10	

ANNUAL REPORT OF THE MIGRATORY BIRD CONSERVATION COMMISSION
MIGRATORY BIRD CONSERVATION FUND ACQUISITIONS
TABLE ONE
NATIONAL MIGRATORY BIRD AREAS IN THE CONTINUOUS UNITED STATES

STATE AND UNIT	FISCAL YEAR MBCF ACQUISITION				CUMULATIVE TOTALS AT END OF FISCAL YEAR						
	PURCHASED		EASEMENT OR LEASE		MBCF				ALL OTHER ACRES	TOTAL ACRES	
	ACRES	COST	ACRES	COST	ACRES	COST	ACRES	COST			
INDIANA											
FSA INTEREST IN MUSCATATUCK	** *	0.00	0.00	0.00	0.00	0.00	0.00	0.00	0.00	219.03	219.03
		0.00	0.00	0.00	0.00	7,713.53	3,582,837.72	0.00	0.00	88.69	7,802.22
STATE TOTAL	1	0.00	0.00	0.00	0.00	7,713.53	3,582,837.72	0.00	0.00	307.72	8,021.25
IOWA											
DESOTO	(10)	0.00	0.00	0.00	0.00	3,444.79	639,117.53	0.00	0.00	57.98	3,502.77
PORT LOUISA	(11) *	0.00	0.00	0.00	0.00	47.50	16,000.00	0.00	0.00	22,596.77	22,644.27
UNION SLOUGH		0.00	0.00	0.00	0.00	2,845.24	210,406.69	70.70	608.00	0.00	2,915.94
STATE TOTAL	2	0.00	0.00	0.00	0.00	6,337.53	865,524.22	70.70	608.00	22,654.75	29,062.98
KANSAS											
FLINT HILLS		0.00	0.00	0.00	0.00	0.00	0.00	0.00	0.00	18,463.36	18,463.36
FSA INTEREST KS	** *	0.00	0.00	0.00	0.00	0.00	0.00	0.00	0.00	116.50	116.50
KIRWIN		0.00	0.00	0.00	0.00	0.00	0.00	0.00	0.00	10,778.00	10,778.00
QUIVIRA		0.00	0.00	0.00	0.00	21,820.10	2,059,238.00	0.00	0.00	199.20	22,019.30
STATE TOTAL	3	0.00	0.00	0.00	0.00	21,820.10	2,059,238.00	0.00	0.00	29,557.06	51,377.16
KENTUCKY											
REELFOOT	(14)	0.00	0.00	0.00	0.00	2,039.64	418,450.15	0.00	0.00	0.00	2,039.64
STATE TOTAL	1	0.00	0.00	0.00	0.00	2,039.64	418,450.15	0.00	0.00	0.00	2,039.64
LOUISIANA											
BAYOU COCODRIE		0.00	0.00	0.00	0.00	5,222.20	3,697,578.00	0.00	0.00	9,496.31	14,718.51
BAYOU SAUVAGE		0.00	0.00	0.00	0.00	0.00	0.00	0.00	0.00	22,265.12	22,265.12
BLACK BAYOU LAKE		0.00	0.00	0.00	0.00	88.60	150,000.00	0.00	0.00	4,433.71	4,522.31
CAMERON PRAIRIE		0.00	0.00	0.00	0.00	9,621.30	5,090,650.00	0.00	0.00	14,926.73	24,548.03
CAT ISLAND		849.44	1,755,000.00	0.00	0.00	1,641.44	2,576,000.00	0.00	0.00	8,832.91	10,474.35
CATAHOULA		0.00	0.00	0.00	0.00	14,869.86	2,190,082.25	0.00	0.00	10,119.75	24,989.61
D'ARBONNE		0.00	0.00	0.00	0.00	0.00	0.00	0.00	0.00	17,419.63	17,419.63
DELTA		0.00	0.00	0.00	0.00	34,462.73	233,324.17	0.00	0.00	14,336.37	48,799.10
FSA INTEREST LA	** *	0.00	0.00	0.00	0.00	0.00	0.00	0.00	0.00	10,873.54	10,873.54
GRAND COTE		0.00	0.00	0.00	0.00	0.00	479,173.00	0.00	0.00	6,077.00	6,077.00
LACASSINE		0.00	0.00	0.00	29,800.00	9,886.29	999,156.43	640.00	241,700.00	23,839.97	34,366.26
LAKE OPHELIA		0.00	0.00	0.00	0.00	3,064.90	1,451,930.00	0.00	0.00	14,496.56	17,561.46
MANDALAY		0.00	0.00	0.00	0.00	0.00	0.00	0.00	0.00	4,619.00	4,619.00
RED RIVER		0.00	0.00	0.00	0.00	1,697.43	1,240,000.00	0.00	0.00	8,593.30	10,290.73
SABINE		0.00	0.00	0.00	0.00	566.66	14,000.51	0.00	0.00	125,223.42	125,790.08
TENSAS RIVER		0.00	0.00	0.00	0.00	1,507.78	1,220,227.00	0.00	0.00	73,113.93	74,621.71
UPPER OUACHITA		0.00	0.00	0.00	0.00	42,183.58	21,132,902.00	0.00	590,095.00	3,881.91	46,065.49
STATE TOTAL	16	849.44	1,755,000.00	0.00	29,800.00	124,812.77	40,475,023.36	640.00	831,795.00	372,549.16	498,001.93
MAINE											
AROOSTOOK		0.00	0.00	0.00	0.00	0.00	0.00	0.00	0.00	5,252.25	5,252.25
CROSS ISLAND		0.00	0.00	0.00	0.00	0.00	0.00	0.00	0.00	1,703.10	1,703.10
FRANKLIN ISLAND		0.00	0.00	0.00	0.00	0.00	0.00	0.00	0.00	11.94	11.94
FSA INTEREST ME	** *	0.00	0.00	0.00	0.00	0.00	0.00	0.00	0.00	622.08	622.08
LAKE UMBAGOG	(36) *	0.00	0.00	0.00	0.00	2,584.34	962,119.70	1.53	0.00	3,059.38	5,645.25
MOOSEHORN		0.00	0.00	0.00	0.00	19,638.52	2,023,308.59	144.00	0.00	9,150.14	28,932.66
PETIT MANAN		0.00	0.00	0.00	0.00	1,472.30	350,000.00	0.00	0.00	4,894.80	6,367.10
POND ISLAND		0.00	0.00	0.00	0.00	0.00	0.00	0.00	0.00	10.00	10.00
RACHEL CARSON		0.00	0.00	0.00	0.00	2,833.39	1,506,243.75	39.89	36,204.00	2,517.37	5,390.65
SEAL ISLAND		0.00	0.00	0.00	0.00	0.00	0.00	0.00	0.00	65.00	65.00
SUNKHAZE MEADOWS		0.00	0.00	0.00	0.00	1,170.00	250,500.00	0.00	0.00	10,265.71	11,435.71
STATE TOTAL	9	0.00	0.00	0.00	0.00	27,698.55	5,092,172.04	185.42	36,204.00	37,551.77	65,435.74
MARYLAND											
BLACKWATER		292.50	1,179,840.00	0.00	0.00	20,153.63	11,485,183.86	20.80	0.00	5,806.88	25,981.31
CHINCOTEAGUE	(16) *	0.00	0.00	0.00	0.00	417.81	13,780.42	0.00	0.00	0.00	417.81
EASTERN NECK		0.00	0.00	0.00	0.00	2,286.27	1,606,145.09	0.00	0.00	0.00	2,286.27
FSA INTEREST MD	** *	0.00	0.00	0.00	0.00	0.00	0.00	0.00	0.00	67.94	67.94
MARTIN	(16)	0.00	0.00	0.00	0.00	1,818.14	61,027.00	35.43	0.00	2,569.86	4,423.43

ANNUAL REPORT OF THE MIGRATORY BIRD CONSERVATION COMMISSION
MIGRATORY BIRD CONSERVATION FUND ACQUISITIONS
TABLE ONE
NATIONAL MIGRATORY BIRD AREAS IN THE CONTINUOUS UNITED STATES

STATE AND UNIT	FISCAL YEAR MBCF ACQUISITION				CUMULATIVE TOTALS AT END OF FISCAL YEAR						
	PURCHASED		EASEMENT OR LEASE		MBCF				ALL OTHER ACRES	TOTAL ACRES	
	ACRES	COST	ACRES	COST	ACRES	COST	ACRES	COST			
PATUXENT	0.00	0.00	0.00	0.00	431.93	7,667.57	0.00	0.00	12,409.00	12,840.93	
SUSQUEHANNA	0.00	0.00	0.00	0.00	0.00	0.00	0.00	0.00	3.79	3.79	
STATE TOTAL	5	292.50	1,179,840.00	0.00	0.00	25,107.78	13,173,803.94	56.23	0.00	20,857.47	46,021.48
MASSACHUSETTS											
ASSABET RIVER	91.68	125,273.00	0.00	0.00	91.68	125,273.00	0.00	0.00	2,229.20	2,320.88	
GREAT MEADOWS	0.00	0.00	0.00	0.00	2,911.04	2,209,918.90	0.00	0.00	938.77	3,849.81	
MONOMOY	0.00	0.00	0.00	0.00	7,435.46	18,339.00	0.00	0.00	168.54	7,604.00	
NANTUCKET	0.00	0.00	0.00	0.00	0.00	0.00	0.00	0.00	24.00	24.00	
NOMANS LAND ISLAND	0.00	0.00	0.00	0.00	0.00	0.00	0.00	0.00	628.00	628.00	
OXBOW	0.00	0.00	0.00	0.00	0.00	0.00	0.00	0.00	1,677.02	1,677.02	
PARKER RIVER	0.00	0.00	0.00	0.00	4,161.39	105,449.84	456.40	2,291.00	34.72	4,652.51	
SILVIO O. CONTE (41) *	230.38	371,361.00	0.00	0.00	230.38	371,361.00	0.00	0.00	322.23	552.61	
THACHER ISLAND	0.00	0.00	0.00	0.00	0.00	0.00	0.00	0.00	22.00	22.00	
STATE TOTAL	8	322.06	496,634.00	0.00	0.00	14,829.95	2,830,341.74	456.40	2,291.00	6,044.48	21,330.83
MICHIGAN											
DETROIT RIVER	0.00	0.00	0.00	0.00	283.95	1,749,068.00	0.00	0.00	4,978.05	5,262.00	
FSA INTEREST MI ** *	0.00	0.00	0.00	0.00	0.00	0.00	0.00	0.00	94.00	94.00	
MICHIGAN ISLANDS	0.00	0.00	0.00	0.00	0.00	0.00	0.00	0.00	600.39	600.39	
SENEY	0.00	0.00	0.00	0.00	44,201.80	127,726.66	0.00	0.00	51,043.01	95,244.81	
SHIAWASSEE	0.00	0.00	0.00	0.00	8,376.46	1,401,015.67	0.00	0.00	1,060.05	9,436.51	
STATE TOTAL	4	0.00	0.00	0.00	0.00	52,862.21	3,277,810.33	0.00	0.00	57,775.50	110,637.71
MINNESOTA											
AGASSIZ	0.00	0.00	0.00	0.00	700.11	40,226.04	0.00	0.00	60,800.82	61,500.93	
BIG STONE	0.00	0.00	0.00	0.00	0.00	0.00	0.00	0.00	11,585.42	11,585.42	
FSA INTEREST MN ** *	0.00	0.00	0.00	0.00	0.00	0.00	0.00	0.00	2,561.80	2,561.80	
GLACIAL RIDGE	0.00	0.00	0.00	0.00	0.00	0.00	0.00	0.00	2,801.64	2,801.64	
HAMDEN SLOUGH	0.00	0.00	0.00	0.00	3,136.45	1,832,872.00	73.40	0.00	0.00	3,209.85	
RICE LAKE	0.00	0.00	0.00	0.00	6,435.60	197,329.77	0.00	0.00	10,036.68	16,472.28	
RYDELL	0.00	0.00	0.00	0.00	0.00	0.00	0.00	0.00	2,070.00	2,070.00	
SHERBURNE	0.00	0.00	0.00	0.00	29,556.90	3,273,341.05	0.00	0.00	120.94	29,677.84	
TAMARAC	0.00	0.00	0.00	0.00	35,151.38	612,159.93	0.00	0.00	40.00	35,191.38	
STATE TOTAL	8	0.00	0.00	0.00	0.00	74,980.44	5,955,928.79	73.40	0.00	90,017.30	165,071.14
MISSISSIPPI											
COLDWATER RIVER	0.00	0.00	0.00	0.00	2,694.10	2,198,450.00	0.00	0.00	94.26	2,788.36	
DAHOMY	0.00	0.00	0.00	5,200.00	0.00	0.00	260.00	36,400.00	8,906.80	9,166.80	
FSA INTEREST MS ** *	0.00	0.00	0.00	0.00	0.00	0.00	0.00	0.00	18,668.23	18,668.23	
HILLSIDE	0.00	0.00	0.00	0.00	3,644.02	2,877,600.00	0.00	0.00	15,407.37	19,051.39	
MATHEWS BRAKE	0.00	0.00	0.00	0.00	2,406.07	1,691,446.00	0.00	0.00	8.64	2,414.71	
MORGAN BRAKE	0.00	0.00	0.00	0.00	7,241.28	4,517,482.20	0.00	0.00	131.83	7,373.11	
NOXUBEE	0.00	0.00	0.00	0.00	1,427.14	145,413.05	0.00	0.00	45,725.15	47,152.29	
PANTHER SWAMP	404.20	1,020,000.00	0.00	16,320.00	28,760.39	18,210,723.00	640.00	157,350.00	7,765.06	37,165.45	
ST. CATHERINE CREEK	0.00	0.00	0.00	12,552.50	24,429.29	12,925,167.00	502.10	89,896.02	0.00	24,931.39	
TALLAHATCHIE	0.00	0.00	0.00	0.00	2,324.14	1,361,000.00	0.00	0.00	2,070.00	4,394.14	
YAZOO	0.00	0.00	0.00	0.00	12,940.43	2,659,743.78	0.00	32,760.00	2.21	12,942.64	
STATE TOTAL	10	404.20	1,020,000.00	0.00	34,072.50	85,866.86	46,587,025.03	1,402.10	316,406.02	98,779.55	186,048.51
MISSOURI											
CLARENCE CANNON	0.00	0.00	0.00	0.00	3,736.04	1,163,649.25	0.00	0.00	14.44	3,750.48	
FSA INTEREST MO ** *	0.00	0.00	0.00	0.00	0.00	0.00	0.00	0.00	1,784.68	1,784.68	
GREAT RIVER (11) *	0.00	0.00	0.00	0.00	1,119.78	460,000.00	0.00	0.00	988.15	2,107.93	
MIDDLE MISSISSIPPI RIVER (11) *	0.00	0.00	0.00	0.00	0.00	0.00	0.00	0.00	1,704.17	1,704.17	
MINGO	0.00	0.00	0.00	0.00	21,535.95	298,615.82	11.86	27.00	113.24	21,661.05	
SQUAW CREEK	0.00	0.00	0.00	0.00	801.32	38,275.46	1.00	0.00	6,612.57	7,414.89	
SWAN LAKE	0.00	0.00	0.00	0.00	5,379.32	355,193.19	0.00	0.00	6,113.65	11,492.97	
TWO RIVERS (11) *	0.00	0.00	0.00	0.00	0.00	0.00	0.00	0.00	232.00	232.00	
STATE TOTAL	4	0.00	0.00	0.00	0.00	32,572.41	2,315,733.72	12.86	27.00	17,562.90	50,148.17

ANNUAL REPORT OF THE MIGRATORY BIRD CONSERVATION COMMISSION
MIGRATORY BIRD CONSERVATION FUND ACQUISITIONS
TABLE ONE
NATIONAL MIGRATORY BIRD AREAS IN THE CONTINUOUS UNITED STATES

STATE AND UNIT	FISCAL YEAR MBCF ACQUISITION				CUMULATIVE TOTALS AT END OF FISCAL YEAR						
	PURCHASED		EASEMENT OR LEASE		MBCF				ALL OTHER ACRES	TOTAL ACRES	
	ACRES	COST	ACRES	COST	ACRES	COST	ACRES	COST			
MONTANA											
BENTON LAKE	0.00	0.00	0.00	0.00	147.64	5,315.00	60.94	8,763.00	12,250.86	12,459.44	
BLACK COULEE	0.00	0.00	0.00	0.00	0.00	0.00	0.00	0.00	1,308.88	1,308.88	
BOWDOIN	0.00	0.00	0.00	0.00	0.00	0.00	0.00	0.00	15,551.97	15,551.97	
CHARLES M. RUSSELL	0.00	0.00	0.00	0.00	0.00	0.00	0.00	0.00	915,814.22	915,814.22	
CREEDMAN COULEE	0.00	0.00	0.00	0.00	0.00	0.00	0.00	0.00	2,728.00	2,728.00	
FSA INTEREST MT ** *	0.00	0.00	0.00	0.00	0.00	0.00	0.00	0.00	2,065.12	2,065.12	
HAILSTONE	0.00	0.00	0.00	0.00	0.00	0.00	0.00	0.00	920.00	920.00	
HALFBREED LAKE	0.00	0.00	0.00	1,512.00	3,279.02	291,000.00	640.00	27,402.20	399.22	4,318.24	
HEWITT LAKE	0.00	0.00	0.00	0.00	0.00	0.00	0.00	0.00	1,360.92	1,360.92	
LAKE MASON	0.00	0.00	0.00	0.00	4,100.45	0.00	0.00	0.00	12,714.07	16,814.52	
LAKE THIBADEAU	0.00	0.00	0.00	0.00	0.00	0.00	0.00	0.00	3,868.48	3,868.48	
LAMESTEER	0.00	0.00	0.00	0.00	0.00	0.00	0.00	0.00	800.00	800.00	
LEE METCALF	0.00	0.00	0.00	0.00	2,696.29	799,680.00	0.00	0.00	96.23	2,792.52	
LOST TRAIL	0.00	0.00	0.00	173.04	4,693.20	1,728,205.00	1,029.04	3,436.18	3,112.00	8,834.24	
MEDICINE LAKE	0.00	0.00	0.00	0.00	2,513.26	25,460.00	0.00	0.00	29,020.45	31,533.71	
RED ROCK LAKES	1,284.13	2,083,218.00	3,266.32	12,415.66	2,308.88	2,153,327.00	3,266.32	12,415.66	65,789.03	71,364.23	
SWAN RIVER	0.00	0.00	0.00	0.00	1,568.81	901,645.00	0.00	0.00	0.00	1,568.81	
UL BEND	0.00	0.00	0.00	0.00	9,688.19	577,280.00	0.00	0.00	46,361.37	56,049.56	
WAR HORSE	0.00	0.00	0.00	0.00	0.00	0.00	0.00	0.00	3,392.87	3,392.87	
STATE TOTAL 18	1,284.13	2,083,218.00	3,266.32	14,100.70	30,995.74	6,481,912.00	4,996.30	52,017.04	1,117,553.69	1,153,545.73	
NEBRASKA											
CRESCENT LAKE	0.00	0.00	0.00	0.00	3,710.00	31,048.00	31.49	3,189.00	42,253.86	45,995.35	
DESOTO (19) *	0.00	0.00	0.00	0.00	3,660.32	591,507.20	0.00	0.00	663.88	4,324.20	
FSA INTEREST NE ** *	0.00	0.00	0.00	0.00	0.00	0.00	0.00	0.00	2,472.92	2,472.92	
VALENTINE	0.00	0.00	0.00	0.00	6,158.34	62,747.00	0.00	0.00	66,939.75	73,098.09	
STATE TOTAL 2	0.00	0.00	0.00	0.00	13,528.66	685,302.20	31.49	3,189.00	112,330.41	125,890.56	
NEVADA											
ANAHO ISLAND	0.00	0.00	0.00	0.00	0.00	0.00	0.00	0.00	247.73	247.73	
DESERT	0.00	0.00	0.00	0.00	320.00	5,600.00	0.00	250.00	1,614,993.49	1,615,313.49	
FALLON	0.00	0.00	0.00	0.00	0.00	0.00	0.00	0.00	17,901.94	17,901.94	
PAHRANAGAT	0.00	0.00	0.00	0.00	3,915.60	500,000.00	0.75	0.00	1,466.39	5,382.74	
RUBY LAKE	0.00	0.00	0.00	0.00	29,945.73	208,437.25	0.00	0.00	9,980.37	39,926.10	
SHELDON (4)	0.00	0.00	0.00	0.00	23,143.67	2,002.00	0.00	0.00	549,732.48	572,876.15	
STILLWATER	0.00	0.00	0.00	0.00	0.00	0.00	0.00	0.00	87,591.61	87,591.61	
STATE TOTAL 7	0.00	0.00	0.00	0.00	57,325.00	716,039.25	0.75	250.00	2,281,914.01	2,339,239.76	
NEW HAMPSHIRE											
LAKE UMBAGOG (37)	216.00	165,000.00	0.00	0.00	6,769.49	3,110,246.58	0.00	1.00	7,539.41	14,308.90	
SILVIO O. CONTE (42) *	0.00	0.00	0.00	0.00	972.13	538,165.50	3.40	2,054.50	4,463.85	5,439.38	
STATE TOTAL 1	216.00	165,000.00	0.00	0.00	7,741.62	3,648,412.08	3.40	2,055.50	12,003.26	19,748.28	
NEW JERSEY											
CAPE MAY	0.00	0.00	0.00	0.00	4,413.00	5,015,420.00	130.85	0.00	6,952.92	11,496.77	
EDWIN B. FORSYTHE	0.00	0.00	0.00	0.00	38,853.47	16,254,275.77	814.86	1,150,117.20	7,398.23	47,066.56	
GREAT SWAMP	0.00	0.00	0.00	0.00	2,808.67	3,577,691.05	0.00	0.00	4,920.13	7,728.80	
SUPAWNA MEADOWS	0.00	0.00	0.00	0.00	2,484.60	968,744.00	42.23	0.00	488.92	3,015.75	
WALLKILL RIVER (39) *	0.00	0.00	0.00	0.00	1,341.46	2,878,912.50	0.00	0.00	3,675.89	5,017.35	
STATE TOTAL 4	0.00	0.00	0.00	0.00	49,901.20	28,695,043.32	987.94	1,150,117.20	23,436.09	74,325.23	
NEW MEXICO											
BITTER LAKE	0.00	0.00	0.00	0.00	10,753.66	52,304.00	0.00	0.00	13,854.98	24,608.64	
BOSQUE DEL APACHE	0.00	0.00	0.00	0.00	56,850.31	125,311.00	0.00	0.00	480.87	57,331.18	
LAS VEGAS	0.00	0.00	0.00	0.00	8,672.08	2,121,150.00	0.00	0.00	0.00	8,672.08	
MAXWELL	0.00	0.00	0.00	0.00	2,791.69	423,370.79	0.00	0.00	906.90	3,698.59	
STATE TOTAL 4	0.00	0.00	0.00	0.00	79,067.74	2,722,135.79	0.00	0.00	15,242.75	94,310.49	
NEW YORK											
AMAGANSETT	0.00	0.00	0.00	0.00	0.00	0.00	0.00	0.00	35.84	35.84	
CONSCIENCE POINT	0.00	0.00	0.00	0.00	0.00	0.00	0.00	0.00	60.40	60.40	

ANNUAL REPORT OF THE MIGRATORY BIRD CONSERVATION COMMISSION
MIGRATORY BIRD CONSERVATION FUND ACQUISITIONS
TABLE ONE
NATIONAL MIGRATORY BIRD AREAS IN THE CONTINUOUS UNITED STATES

STATE AND UNIT	FISCAL YEAR MBCF ACQUISITION				CUMULATIVE TOTALS AT END OF FISCAL YEAR					
	PURCHASED		EASEMENT OR LEASE		MBCF				ALL OTHER ACRES	TOTAL ACRES
	ACRES	COST	ACRES	COST	ACRES	COST	ACRES	COST		
ELIZABETH A. MORTON	0.00	0.00	0.00	0.00	0.00	0.00	0.00	0.00	187.19	187.19
FSA INTEREST NY ** *	0.00	0.00	0.00	0.00	0.00	0.00	0.00	0.00	2,714.10	2,714.10
IROQUOIS	0.00	0.00	0.00	0.00	10,751.49	1,279,615.46	6.32	0.00	70.25	10,828.06
MONTEZUMA	0.00	0.00	0.00	0.00	7,910.89	2,595,396.66	26.89	321.90	1,156.98	9,094.76
OYSTER BAY	0.00	0.00	0.00	0.00	0.00	0.00	0.00	0.00	3,204.08	3,204.08
SEATUCK	0.00	0.00	0.00	0.00	0.00	0.00	0.00	0.00	209.23	209.23
SHAWANGUNK GRASSLANDS	0.00	0.00	0.00	0.00	0.00	0.00	0.00	0.00	566.53	566.53
TARGET ROCK	0.00	0.00	0.00	0.00	0.00	0.00	0.00	0.00	80.09	80.09
WALLKILL RIVER (40)	0.00	0.00	0.00	0.00	0.00	0.00	0.00	0.00	147.09	147.09
WERTHEIM	0.00	0.00	0.00	0.00	188.70	193,217.80	0.00	0.00	2,485.09	2,673.79
STATE TOTAL 11	0.00	0.00	0.00	0.00	18,851.08	4,068,229.92	33.21	321.90	10,916.87	29,801.16
NORTH CAROLINA										
CEDAR ISLAND	0.00	0.00	0.00	0.00	12,498.77	389,171.21	0.00	0.00	1,997.55	14,496.32
CURRITUCK	0.00	0.00	0.00	0.00	3,763.79	8,689,434.00	225.76	120,000.00	4,324.09	8,313.64
FSA INTEREST NC ** *	0.00	0.00	0.00	0.00	0.00	0.00	0.00	0.00	6,621.05	6,621.05
GREAT DISMAL SWAMP (16)	0.00	0.00	0.00	0.00	1,297.90	1,112,180.00	0.00	0.00	24,811.80	26,109.70
MACKAY ISLAND (16)	22.09	219,300.00	0.00	0.00	6,370.24	1,172,606.95	0.00	0.00	1,015.56	7,385.80
MATTAMUSKEET	0.00	0.00	0.00	0.00	252.04	1,285.35	0.00	0.00	49,921.89	50,173.93
PEA ISLAND	0.00	0.00	0.00	0.00	5,787.97	40,401.86	0.00	0.00	46.23	5,834.20
PEE DEE	0.00	0.00	0.00	0.00	8,438.94	2,561,851.76	0.00	0.00	27.66	8,466.60
POCOSIN LAKES	0.00	0.00	0.00	0.00	12,350.35	1,682,157.99	0.00	0.00	97,756.29	110,106.64
ROANOKE RIVER	0.00	0.00	0.00	0.00	16,192.43	8,338,258.00	0.00	0.00	4,870.00	21,062.43
SWANQUARTER	0.00	0.00	0.00	0.00	15,492.76	60,920.93	0.00	0.00	918.33	16,411.09
STATE TOTAL 10	22.09	219,300.00	0.00	0.00	82,445.19	24,048,268.05	225.76	120,000.00	192,310.45	274,981.40
NORTH DAKOTA										
APPERT LAKE	0.00	0.00	0.00	0.00	0.00	0.00	0.00	0.00	907.75	907.75
ARDOCH	0.00	0.00	0.00	0.00	288.13	2,739.00	0.00	0.00	2,408.00	2,696.13
ARROWWOOD	0.00	0.00	0.00	0.00	2,097.51	46,906.58	0.00	0.00	13,845.35	15,942.86
AUDUBON	0.00	0.00	0.00	0.00	0.00	0.00	0.00	0.00	14,739.19	14,739.19
BONE HILL	0.00	0.00	0.00	0.00	0.00	0.00	0.00	0.00	640.00	640.00
BRUMBA	0.00	0.00	0.00	0.00	0.00	0.00	0.00	0.00	1,977.48	1,977.48
BUFFALO LAKE	0.00	0.00	0.00	0.00	0.00	0.00	0.00	0.00	1,563.72	1,563.72
CAMP LAKE	0.00	0.00	0.00	0.00	0.00	0.00	0.00	0.00	584.70	584.70
CANFIELD LAKE	0.00	0.00	0.00	0.00	3.10	100.00	0.00	0.00	310.13	313.23
CHASE LAKE	0.00	0.00	0.00	0.00	4,449.47	25,611.00	0.00	0.00	0.00	4,449.47
COTTONWOOD LAKE	0.00	0.00	0.00	0.00	0.00	0.00	0.00	0.00	1,013.47	1,013.47
DAKOTA LAKE	0.00	0.00	0.00	0.00	0.00	0.00	0.00	0.00	2,799.78	2,799.78
DES LACS	0.00	0.00	0.00	0.00	631.63	6,893.60	2.70	0.00	18,912.81	19,547.14
FLORENCE LAKE	0.00	0.00	0.00	0.00	1,468.40	31,485.00	0.00	0.00	419.80	1,888.20
FSA INTEREST ND ** *	0.00	0.00	0.00	0.00	0.00	0.00	0.00	0.00	6,936.40	6,936.40
HALF-WAY LAKE	0.00	0.00	0.00	0.00	0.00	0.00	160.00	0.00	0.00	160.00
HIDDENWOOD	0.00	0.00	0.00	0.00	0.00	0.00	568.35	0.00	0.00	568.35
HOBART LAKE	0.00	0.00	0.00	0.00	236.49	5,165.00	0.00	0.00	1,840.61	2,077.10
HUTCHINSON LAKE	0.00	0.00	0.00	0.00	0.00	0.00	0.00	0.00	478.90	478.90
J. CLARK SALYER	0.00	0.00	0.00	0.00	21,649.95	306,352.60	50.52	0.00	37,675.93	59,376.40
JOHNSON LAKE	0.00	0.00	0.00	0.00	0.00	0.00	0.00	0.00	2,007.91	2,007.91
KELLYS SLOUGH	0.00	0.00	0.00	0.00	0.00	0.00	0.00	0.00	1,269.50	1,269.50
LAKE ALICE	0.00	0.00	0.00	0.00	8,027.86	2,067,184.00	8.00	0.00	4,059.68	12,095.54
LAKE GEORGE	0.00	0.00	0.00	0.00	0.00	0.00	0.00	0.00	3,118.81	3,118.81
LAKE ILO	0.00	0.00	0.00	0.00	3,178.30	78,582.98	0.00	0.00	854.82	4,033.12
LAKE NETTIE	0.00	0.00	0.00	0.00	2,420.60	148,245.00	0.00	0.00	634.30	3,054.90
LAKE OTIS	0.00	0.00	0.00	0.00	0.00	0.00	0.00	0.00	320.00	320.00
LAKE PATRICIA	0.00	0.00	0.00	0.00	0.00	0.00	0.00	0.00	800.23	800.23
LAKE ZAHL	0.00	0.00	0.00	0.00	3,178.98	53,275.00	0.00	0.00	644.21	3,823.19
LAMBS LAKE	0.00	0.00	0.00	0.00	0.00	0.00	0.00	0.00	1,206.67	1,206.67
LITTLE GOOSE	0.00	0.00	0.00	0.00	0.00	0.00	0.00	0.00	288.41	288.41
LONG LAKE	0.00	0.00	0.00	0.00	12,578.82	77,180.00	217.35	10.00	9,702.33	22,498.50
LORDS LAKE	0.00	0.00	0.00	0.00	0.00	0.00	0.00	0.00	1,915.29	1,915.29

ANNUAL REPORT OF THE MIGRATORY BIRD CONSERVATION COMMISSION
MIGRATORY BIRD CONSERVATION FUND ACQUISITIONS
TABLE ONE
NATIONAL MIGRATORY BIRD AREAS IN THE CONTINUOUS UNITED STATES

STATE AND UNIT	FISCAL YEAR MBCF ACQUISITION				CUMULATIVE TOTALS AT END OF FISCAL YEAR					
	PURCHASED		EASEMENT OR LEASE		MBCF				ALL OTHER ACRES	TOTAL ACRES
	ACRES	COST	ACRES	COST	ACRES	COST	ACRES	COST		
LOST LAKE	0.00	0.00	0.00	0.00	0.00	0.00	0.00	0.00	960.21	960.21
LOSTWOOD	0.00	0.00	0.00	0.00	3,148.01	24,553.00	0.00	0.00	23,755.98	26,903.99
MAPLE RIVER	0.00	0.00	0.00	0.00	0.00	0.00	0.00	0.00	712.00	712.00
MCLEAN	0.00	0.00	0.00	0.00	344.00	12,516.00	0.00	0.00	416.00	760.00
PLEASANT LAKE	0.00	0.00	0.00	0.00	0.00	0.00	0.00	0.00	897.80	897.80
PRETTY ROCK	0.00	0.00	0.00	0.00	0.00	0.00	0.00	0.00	800.00	800.00
RABB LAKE	0.00	0.00	0.00	0.00	0.00	0.00	0.00	0.00	260.80	260.80
ROCK LAKE	0.00	0.00	0.00	0.00	0.00	0.00	0.00	0.00	5,665.96	5,665.96
ROSE LAKE	0.00	0.00	0.00	0.00	0.00	0.00	0.00	0.00	836.30	836.30
SCHOOL SECTION LAKE	0.00	0.00	0.00	0.00	0.00	0.00	0.00	0.00	297.30	297.30
SHELL LAKE	0.00	0.00	0.00	0.00	710.20	17,902.00	0.00	0.00	1,124.90	1,835.10
SHEYENNE LAKE	0.00	0.00	0.00	0.00	0.00	0.00	0.00	0.00	797.30	797.30
SIBLEY LAKE	0.00	0.00	0.00	0.00	0.00	0.00	0.00	0.00	1,077.40	1,077.40
SILVER LAKE	0.00	0.00	0.00	0.00	0.00	0.00	0.00	0.00	3,347.64	3,347.64
SLADE	0.00	0.00	0.00	0.00	0.00	0.00	0.00	0.00	3,000.20	3,000.20
SNYDER LAKE	0.00	0.00	0.00	0.00	0.00	0.00	0.00	0.00	1,550.18	1,550.18
SPRINGWATER	0.00	0.00	0.00	0.00	0.00	0.00	0.00	0.00	640.00	640.00
STEWART LAKE	0.00	0.00	0.00	0.00	0.00	0.00	0.00	0.00	2,230.40	2,230.40
STONEY SLOUGH	0.00	0.00	0.00	0.00	0.00	0.00	0.00	0.00	880.00	880.00
STORM LAKE	0.00	0.00	0.00	0.00	0.00	0.00	0.00	0.00	685.90	685.90
STUMP LAKE	0.00	0.00	0.00	0.00	0.00	0.00	0.00	0.00	27.39	27.39
SUNBURST LAKE	0.00	0.00	0.00	0.00	0.00	0.00	0.00	0.00	327.51	327.51
TEWAUKON	0.00	0.00	0.00	0.00	6,790.23	460,122.00	0.00	0.00	1,573.39	8,363.62
TOMAHAWK	0.00	0.00	0.00	0.00	0.00	0.00	0.00	0.00	440.00	440.00
UPPER SOURIS	0.00	0.00	0.00	0.00	2,939.17	41,220.00	3.76	0.00	29,359.32	32,302.25
WHITE LAKE	0.00	0.00	0.00	0.00	1,040.00	28,800.00	0.00	0.00	0.00	1,040.00
WILD RICE LAKE	0.00	0.00	0.00	0.00	0.00	0.00	0.00	0.00	778.80	778.80
WILLOW LAKE	0.00	0.00	0.00	0.00	0.00	0.00	0.00	0.00	2,620.38	2,620.38
WINTERING RIVER	0.00	0.00	0.00	0.00	0.00	0.00	0.00	0.00	239.26	239.26
WOOD LAKE	0.00	0.00	0.00	0.00	0.00	0.00	0.00	0.00	280.00	280.00
STATE TOTAL	62	0.00	0.00	0.00	75,180.85	3,434,832.76	1,010.68	10.00	219,458.50	295,650.03
OHIO										
CEDAR POINT	0.00	0.00	0.00	0.00	0.00	0.00	0.00	0.00	2,449.77	2,449.77
OTTAWA	0.00	0.00	0.00	0.00	5,172.11	2,572,893.55	590.80	2.00	800.24	6,563.15
WEST SISTER ISLAND	0.00	0.00	0.00	0.00	0.00	0.00	0.00	0.00	80.13	80.13
STATE TOTAL	3	0.00	0.00	0.00	5,172.11	2,572,893.55	590.80	2.00	3,330.14	9,093.05
OKLAHOMA										
DEEP FORK	0.00	0.00	0.00	0.00	1,571.50	421,000.00	0.00	0.00	7,564.68	9,136.18
LITTLE RIVER	0.00	0.00	0.00	0.00	12,262.16	9,881,540.94	0.00	0.00	1,397.88	13,660.04
OPTIMA	0.00	0.00	0.00	0.00	0.00	0.00	0.00	0.00	4,332.81	4,332.81
SALT PLAINS	0.00	0.00	0.00	0.00	1,117.39	50,837.00	0.00	0.00	31,079.92	32,197.31
SEQUOYAH	0.00	0.00	0.00	0.00	0.00	0.00	0.00	0.00	20,800.00	20,800.00
TISHOMINGO	0.00	0.00	0.00	0.00	0.00	0.00	0.00	0.00	16,464.18	16,464.18
WASHITA	0.00	0.00	0.00	0.00	0.00	0.00	0.00	1.00	8,075.37	8,075.37
STATE TOTAL	7	0.00	0.00	0.00	14,951.05	10,353,377.94	0.00	1.00	89,714.84	104,665.89
OREGON										
ANKENY	0.00	0.00	0.00	0.00	2,796.33	893,600.00	0.00	0.00	0.00	2,796.33
BASKETT SLOUGH	0.00	0.00	0.00	0.00	2,492.33	941,985.00	0.00	0.00	0.00	2,492.33
CAPE MEARES	0.00	0.00	0.00	0.00	0.00	0.00	0.00	0.00	138.51	138.51
COLD SPRINGS	0.00	0.00	0.00	0.00	386.88	2,760.00	0.00	0.00	2,729.95	3,116.83
DEER FLAT	(21) *	0.00	0.00	0.00	0.00	0.00	0.00	0.00	187.94	187.94
FSA INTEREST OR	** *	0.00	0.00	0.00	0.00	0.00	0.00	0.00	909.79	909.79
HART MOUNTAIN		0.00	0.00	0.00	54,837.26	216,114.58	0.00	0.00	215,206.32	270,043.58
KLAMATH MARSH		0.00	0.00	0.00	18,288.86	2,070,694.00	0.00	0.00	22,596.12	40,884.98
LEWIS AND CLARK		0.00	0.00	0.00	2,850.63	469,250.00	0.00	0.00	9,316.22	12,166.85
LOWER KLAMATH	(2) *	0.00	0.00	0.00	0.00	0.00	0.00	0.00	6,618.13	6,618.13
MALHEUR		0.00	0.00	0.00	47,953.58	2,461,939.35	0.00	0.00	139,173.36	187,126.94

ANNUAL REPORT OF THE MIGRATORY BIRD CONSERVATION COMMISSION
MIGRATORY BIRD CONSERVATION FUND ACQUISITIONS
TABLE ONE
NATIONAL MIGRATORY BIRD AREAS IN THE CONTINUOUS UNITED STATES

STATE AND UNIT	FISCAL YEAR MBCF ACQUISITION				CUMULATIVE TOTALS AT END OF FISCAL YEAR					
	PURCHASED		EASEMENT OR LEASE		MBCF				ALL OTHER ACRES	TOTAL ACRES
	ACRES	COST	ACRES	COST	ACRES	COST	ACRES	COST		
OREGON ISLANDS	0.00	0.00	0.00	0.00	0.00	0.00	0.00	0.00	1,081.61	1,081.61
SHELDON (15) *	0.00	0.00	0.00	0.00	627.48	4,079.00	0.00	0.00	0.00	627.48
TUALATIN RIVER	0.00	0.00	0.00	0.00	0.00	0.00	0.00	0.00	1,505.12	1,505.12
UMATILLA (26)	0.00	0.00	0.00	0.00	0.00	0.00	0.00	0.00	8,907.37	8,907.37
UPPER KLAMATH	0.00	0.00	0.00	0.00	4,146.10	123,476.00	0.00	0.00	13,047.30	17,193.40
WILLIAM L. FINLEY	0.00	0.00	0.00	0.00	5,697.06	2,600,006.00	8.94	6,797.00	0.00	5,706.00
STATE TOTAL 13	0.00	0.00	0.00	0.00	140,076.51	9,783,903.93	8.94	6,797.00	421,417.74	561,503.19
PENNSYLVANIA										
ERIE	0.00	0.00	0.00	0.00	7,953.56	911,480.12	9.25	0.00	837.42	8,800.23
JOHN HEINZ	0.00	0.00	0.00	0.00	80.33	20,966.00	0.00	0.00	912.84	993.17
STATE TOTAL 2	0.00	0.00	0.00	0.00	8,033.89	932,446.12	9.25	0.00	1,750.26	9,793.40
RHODE ISLAND										
BLOCK ISLAND	0.00	0.00	0.00	0.00	0.00	0.00	0.00	0.00	132.72	132.72
JOHN H. CHAFEE	0.00	0.00	0.00	0.00	0.00	0.00	0.00	0.00	449.72	449.72
NINIGRET	0.00	0.00	0.00	0.00	0.00	0.00	0.00	0.00	867.94	867.94
SACHUEST POINT	0.00	0.00	0.00	0.00	0.00	0.00	0.00	0.00	241.90	241.90
TRUSTOM POND	0.00	0.00	0.00	0.00	0.00	0.00	0.00	0.00	777.30	777.30
STATE TOTAL 5	0.00	0.00	0.00	0.00	0.00	0.00	0.00	0.00	2,469.58	2,469.58
SOUTH CAROLINA										
CAPE ROMAIN	0.00	0.00	0.00	0.00	22,237.29	17,218.18	0.00	0.00	44,049.89	66,287.18
CAROLINA SANDHILLS	0.00	0.00	0.00	0.00	580.20	38,352.75	0.00	0.00	44,992.05	45,572.25
FSA INTEREST SC ** *	0.00	0.00	0.00	0.00	0.00	0.00	0.00	0.00	1,430.04	1,430.04
PINCKNEY ISLAND	0.00	0.00	0.00	0.00	0.00	0.00	0.00	0.00	4,052.70	4,052.70
SANTEE	0.00	0.00	0.00	0.00	4,322.43	549,953.57	0.00	0.00	8,160.85	12,483.28
SAVANNAH (1) *	0.00	0.00	0.00	0.00	7,991.40	1,554,443.30	0.00	0.00	7,019.97	15,011.37
TYBEE	0.00	0.00	0.00	0.00	0.00	0.00	0.00	0.00	100.00	100.00
WACCAMAW	0.00	0.00	0.00	0.00	0.00	0.00	0.00	0.00	18,303.96	18,303.96
STATE TOTAL 6	0.00	0.00	0.00	0.00	35,131.32	2,159,967.80	0.00	0.00	128,109.46	163,240.78
SOUTH DAKOTA										
BEAR BUTTE	0.00	0.00	0.00	0.00	0.00	0.00	0.00	0.00	374.20	374.20
FSA INTEREST SD ** *	0.00	0.00	0.00	0.00	0.00	0.00	0.00	0.00	151.20	151.20
LACREEK	0.00	0.00	0.00	0.00	9,379.75	768,491.00	80.00	35,933.00	7,395.58	16,855.33
LAKE ANDES	0.00	0.00	0.00	0.00	617.64	92,322.00	0.00	0.00	5,021.79	5,639.43
SAND LAKE	0.00	0.00	0.00	0.00	3,917.39	90,622.00	0.00	0.00	17,902.80	21,820.19
WAUBAY	0.00	0.00	0.00	0.00	683.77	23,838.00	90.53	0.00	3,965.92	4,740.22
STATE TOTAL 5	0.00	0.00	0.00	0.00	14,598.55	975,273.00	170.53	35,933.00	34,811.49	49,580.57
TENNESSEE										
CHICKASAW	0.00	0.00	0.00	0.00	15,356.98	17,796,888.72	0.00	0.00	10,469.77	25,826.75
CROSS CREEKS	0.00	0.00	0.00	0.00	87.64	26,200.00	0.00	0.00	8,773.85	8,861.49
FSA INTEREST TN ** *	0.00	0.00	0.00	0.00	0.00	0.00	0.00	0.00	685.39	685.39
HATCHIE	0.00	0.00	0.00	0.00	11,220.73	1,862,329.25	0.00	0.00	335.37	11,556.10
LAKE ISOM	0.00	0.00	0.00	0.00	344.65	27,290.72	0.00	0.00	1,513.73	1,858.38
LOWER HATCHIE	0.00	0.00	0.00	0.00	8,493.58	11,163,126.00	0.00	0.00	3,776.12	12,269.70
REELFOOT (22) *	0.00	0.00	0.00	0.00	496.53	109,531.78	0.00	0.00	7,914.17	8,410.70
TENNESSEE	0.00	0.00	0.00	0.00	430.45	72,151.10	0.00	0.00	50,929.01	51,359.46
STATE TOTAL 6	0.00	0.00	0.00	0.00	36,430.56	31,057,517.57	0.00	0.00	84,397.41	120,827.97
TEXAS										
ANAHUAC	0.00	0.00	0.00	0.00	29,967.70	12,452,064.20	63.09	0.00	4,308.75	34,339.54
ARANSAS	0.00	0.00	0.00	0.00	49,235.68	1,833,531.80	0.00	0.00	65,421.37	114,657.05
BIG BOGGY	0.00	0.00	0.00	0.00	4,113.41	2,374,594.19	258.23	58,112.00	154.53	4,526.17
BRAZORIA	0.00	0.00	0.00	0.00	42,641.23	13,822,482.26	0.00	0.00	1,772.65	44,413.88
BUFFALO LAKE	0.00	0.00	0.00	0.00	0.00	0.00	0.00	0.00	7,664.16	7,664.16
FSA INTEREST TX ** *	0.00	0.00	0.00	0.00	0.00	0.00	0.00	0.00	2,776.21	2,776.21
HAGERMAN	0.00	0.00	0.00	0.00	0.00	0.00	0.00	0.00	11,319.84	11,319.84
LAGUNA ATASCOSA	0.00	0.00	0.00	0.00	77,311.68	12,475,079.19	0.00	0.00	11,089.06	88,400.74
LITTLE SANDY	0.00	0.00	0.00	0.00	0.00	0.00	3,802.00	0.00	0.00	3,802.00

ANNUAL REPORT OF THE MIGRATORY BIRD CONSERVATION COMMISSION
MIGRATORY BIRD CONSERVATION FUND ACQUISITIONS
TABLE ONE
NATIONAL MIGRATORY BIRD AREAS IN THE CONTINUOUS UNITED STATES

STATE AND UNIT	FISCAL YEAR MBCF ACQUISITION				CUMULATIVE TOTALS AT END OF FISCAL YEAR						
	PURCHASED		EASEMENT OR LEASE		MBCF				ALL OTHER ACRES	TOTAL ACRES	
	ACRES	COST	ACRES	COST	ACRES	COST	ACRES	COST			
LOWER RIO GRANDE VALLEY	0.00	0.00	0.00	0.00	0.00	0.00	0.00	0.00	90,640.87	90,640.87	
MCFADDIN	0.00	0.00	0.00	0.00	51,112.55	10,956,489.20	7,748.88	1,394,170.00	0.00	58,861.43	
MOODY	0.00	0.00	0.00	0.00	0.00	0.00	3,516.87	0.00	0.00	3,516.87	
MULESHOE	0.00	0.00	0.00	0.00	2,154.80	25,740.00	0.00	0.00	4,294.30	6,449.10	
SAN BERNARD	21.60	97,200.00	0.00	0.00	34,374.77	15,727,987.97	2.32	1.00	8,294.08	42,671.17	
SANTA ANA	0.00	0.00	0.00	0.00	1,980.50	23,766.00	0.00	0.00	107.00	2,087.50	
TEXAS POINT	0.00	0.00	0.00	0.00	8,952.02	1,719,000.00	0.00	0.00	0.00	8,952.02	
TRINITY RIVER	1,597.92	2,993,999.99	0.00	0.00	14,070.62	11,186,702.99	0.00	0.00	9,614.90	23,685.52	
STATE TOTAL	16	1,619.52	3,091,199.99	0.00	0.00	315,914.96	82,597,437.80	15,391.39	1,452,283.00	217,457.72	548,764.07
UTAH											
BEAR RIVER	0.00	0.00	0.00	0.00	25,940.01	3,579,119.47	46.64	740.00	48,009.76	73,996.41	
FISH SPRINGS	0.00	0.00	0.00	0.00	3,774.82	93,325.00	0.00	73.00	14,217.42	17,992.24	
FSA INTEREST UT ** *	0.00	0.00	0.00	0.00	0.00	0.00	0.00	0.00	442.52	442.52	
OURAY	0.00	0.00	0.00	18,750.00	5,014.98	461,084.25	3,844.68	414,653.15	3,116.90	11,976.56	
STATE TOTAL	3	0.00	0.00	18,750.00	34,729.81	4,133,528.72	3,891.32	415,466.15	65,786.60	104,407.73	
VERMONT											
FSA INTEREST VT ** *	0.00	0.00	0.00	0.00	0.00	0.00	0.00	0.00	71.00	71.00	
MISSISQUOI	159.41	250,000.00	0.00	0.00	6,309.45	580,804.27	15.20	1,330.00	437.24	6,761.89	
SILVIO O. CONTE (43)	0.00	0.00	0.00	0.00	17,189.21	4,337,574.00	0.00	0.00	9,461.80	26,651.01	
STATE TOTAL	2	159.41	250,000.00	0.00	0.00	23,498.66	4,918,378.27	15.20	1,330.00	9,970.04	33,483.90
VIRGINIA											
BACK BAY	0.00	0.00	0.00	0.00	7,470.72	5,160,662.00	11.37	0.00	1,636.05	9,118.14	
CHINCOTEAGUE (23)	0.00	0.00	0.00	0.00	9,462.92	635,403.91	50.10	0.00	4,101.66	13,614.68	
EASTERN SHORE OF VIRGINIA	0.00	0.00	0.00	0.00	522.50	1,844,370.00	0.00	0.00	893.22	1,415.72	
FISHERMAN ISLAND	0.00	0.00	0.00	0.00	825.00	1,600,000.00	0.00	0.00	1,071.30	1,896.30	
FSA INTEREST VA ** *	0.00	0.00	0.00	0.00	0.00	0.00	0.00	0.00	133.70	133.70	
GREAT DISMAL SWAMP (24) *	0.00	0.00	0.00	0.00	2,896.42	2,824,762.98	0.00	0.00	82,196.69	85,093.11	
MACKAY ISLAND (24) *	0.00	0.00	0.00	0.00	874.40	26,855.75	0.00	0.00	0.00	874.40	
MARTIN (23) *	0.00	0.00	0.00	0.00	0.00	0.00	0.00	0.00	145.62	145.62	
NANSEMOND	0.00	0.00	0.00	0.00	0.00	0.00	0.00	0.00	422.99	422.99	
OCCOQUAN BAY	0.00	0.00	0.00	0.00	0.00	0.00	0.00	0.00	642.07	642.07	
PLUM TREE ISLAND	0.00	0.00	0.00	0.00	0.00	0.00	0.00	0.00	3,501.68	3,501.68	
PRESQUILE	0.00	0.00	0.00	0.00	0.00	0.00	0.00	0.00	1,328.92	1,328.92	
RAPPAHANNOCK RIVER VALLEY	178.00	731,000.00	0.00	0.00	1,205.80	2,270,200.00	204.90	585,001.00	6,779.20	8,189.90	
WALLOPS ISLAND	0.00	0.00	0.00	0.00	0.00	0.00	0.00	0.00	373.00	373.00	
STATE TOTAL	10	178.00	731,000.00	0.00	0.00	23,257.76	14,362,254.64	266.37	585,001.00	103,226.10	126,750.23
WASHINGTON											
COLUMBIA	0.00	0.00	0.00	0.00	11,361.77	426,346.04	0.00	0.00	18,234.50	29,596.27	
CONBOY LAKE	0.00	0.00	0.00	0.00	5,964.96	2,289,100.00	718.29	400,000.00	386.45	7,069.70	
FSA INTEREST WA ** *	0.00	0.00	0.00	0.00	0.00	0.00	0.00	0.00	1,467.31	1,467.31	
LITTLE PEND OREILLE	0.00	0.00	0.00	0.00	4,216.65	27,414.00	0.00	0.00	38,376.92	42,593.57	
MCNARY	0.00	0.00	0.00	0.00	185.16	865.00	0.00	0.00	15,320.23	15,505.39	
NISQUALLY	0.00	0.00	0.00	0.00	2,494.24	3,861,990.17	0.55	3,000.00	1,812.84	4,307.63	
PIERCE	0.00	0.00	0.00	0.00	0.00	0.00	0.00	0.00	329.38	329.38	
RIDGEFIELD	0.00	0.00	0.00	0.00	4,670.16	4,033,600.00	1.74	21.00	545.80	5,217.70	
SADDLE MOUNTAIN	0.00	0.00	0.00	0.00	0.00	0.00	0.00	0.00	161,485.93	161,485.93	
SAN JUAN ISLANDS	0.00	0.00	0.00	0.00	0.00	0.00	0.00	0.00	448.53	448.53	
STEIGERWALD LAKE	0.00	0.00	0.00	0.00	50.00	500,000.00	0.00	0.00	996.02	1,046.02	
TOPPENISH	0.00	0.00	0.00	0.00	1,762.80	599,137.00	1.29	0.00	214.75	1,978.84	
TURNBULL	0.00	0.00	0.00	0.00	13,909.32	507,411.38	0.00	0.00	4,263.30	18,172.62	
UMATILLA (4) *	0.00	0.00	0.00	0.00	0.00	0.00	0.00	0.00	14,875.83	14,875.83	
WILLAPA	0.00	0.00	0.00	0.00	8,616.42	5,122,010.74	0.12	0.00	7,818.89	16,435.43	
STATE TOTAL	13	0.00	0.00	0.00	0.00	53,231.48	17,367,874.33	721.99	403,021.00	266,576.68	320,530.15
WEST VIRGINIA											
CANAAN VALLEY	0.00	0.00	0.00	0.00	629.11	1,804,885.00	0.00	0.00	15,303.80	15,932.91	
FSA INTEREST WV ** *	0.00	0.00	0.00	0.00	0.00	0.00	0.00	0.00	8.37	8.37	

ANNUAL REPORT OF THE MIGRATORY BIRD CONSERVATION COMMISSION
MIGRATORY BIRD CONSERVATION FUND ACQUISITIONS
TABLE ONE
NATIONAL MIGRATORY BIRD AREAS IN THE CONTINUOUS UNITED STATES

STATE AND UNIT	FISCAL YEAR MBCF ACQUISITION				CUMULATIVE TOTALS AT END OF FISCAL YEAR						
	PURCHASED		EASEMENT OR LEASE		MBCF				ALL OTHER ACRES	TOTAL ACRES	
	ACRES	COST	ACRES	COST	ACRES	COST	ACRES	COST			
STATE TOTAL	1	0.00	0.00	0.00	0.00	629.11	1,804,885.00	0.00	0.00	15,312.17	15,941.28
WISCONSIN											
FSA INTEREST WI ** *		0.00	0.00	0.00	0.00	0.00	0.00	0.00	0.00	920.00	920.00
HORICON		0.00	0.00	0.00	0.00	21,098.37	555,238.34	29.00	356.00	286.59	21,413.96
NECEDAH		0.00	0.00	0.00	0.00	244.92	3,194.26	0.00	0.00	43,450.94	43,695.86
TREMPEALEAU		0.00	0.00	0.00	0.00	593.89	0.00	0.00	0.00	5,604.94	6,198.83
STATE TOTAL	3	0.00	0.00	0.00	0.00	21,937.18	558,432.60	29.00	356.00	50,262.47	72,228.65
WYOMING											
BAMFORTH		0.00	0.00	0.00	0.00	964.80	6,368.00	0.00	0.00	201.23	1,166.03
COKEVILLE MEADOWS		0.00	0.00	0.00	4,113.79	4,738.89	2,101,412.61	320.00	27,910.44	4,200.43	9,259.32
FSA INTEREST WY ** *		0.00	0.00	0.00	0.00	0.00	0.00	0.00	0.00	3,287.75	3,287.75
HUTTON LAKE		0.00	0.00	0.00	0.00	1,815.49	7,944.00	0.00	0.00	152.85	1,968.34
PATHFINDER		0.00	0.00	0.00	0.00	0.00	0.00	0.00	0.00	16,806.90	16,806.90
SEEDSKADEE		0.00	0.00	0.00	0.00	0.00	0.00	0.00	0.00	27,230.22	27,230.22
STATE TOTAL	5	0.00	0.00	0.00	4,113.79	7,519.18	2,115,724.61	320.00	27,910.44	51,879.38	59,718.56
GRAND TOTAL	366	6,008.65	12,974,526.99	4,557.52	3,380,836.99	2,324,215.18	521,453,782.86	131,728.06	79,218,662.34	7,612,117.18	10,068,060.42

- (1) Also in Georgia
- (2) " " California
- (3) " " Arizona
- (4) " " Oregon
- (5) " " Alabama
- (6) " " Florida
- (7) " " South Carolina
- (8) " " Missouri
- (9) " " Iowa, Minnesota and Wisconsin
- (10) " " Nebraska
- (11) " " Illinois
- (12) " " Texas
- (13) " " Illinois, Minnesota and Wisconsin
- (14) " " Tennessee
- (15) " " Nevada
- (16) " " Virginia
- (17) " " New Mexico
- (18) " " Illinois, Iowa and Wisconsin
- (19) " " Iowa
- (20) " " South Dakota
- (21) " " Idaho
- (22) " " Kentucky
- (23) " " Maryland
- (24) " " North Carolina
- (25) " " Illinois, Iowa and Minnesota
- (26) " " Washington
- (27) " " Mississippi
- (28) " " Louisiana
- (34) " " West Virginia and Kentucky
- (35) " " Pennsylvania and Kentucky
- (36) " " New Hampshire
- (37) " " Maine
- (38) " " West Virginia and Pennsylvania
- (39) " " New York
- (40) " " New Jersey
- (41) " " Massachusetts and New Hampshire
- (42) " " Vermont and New Hampshire

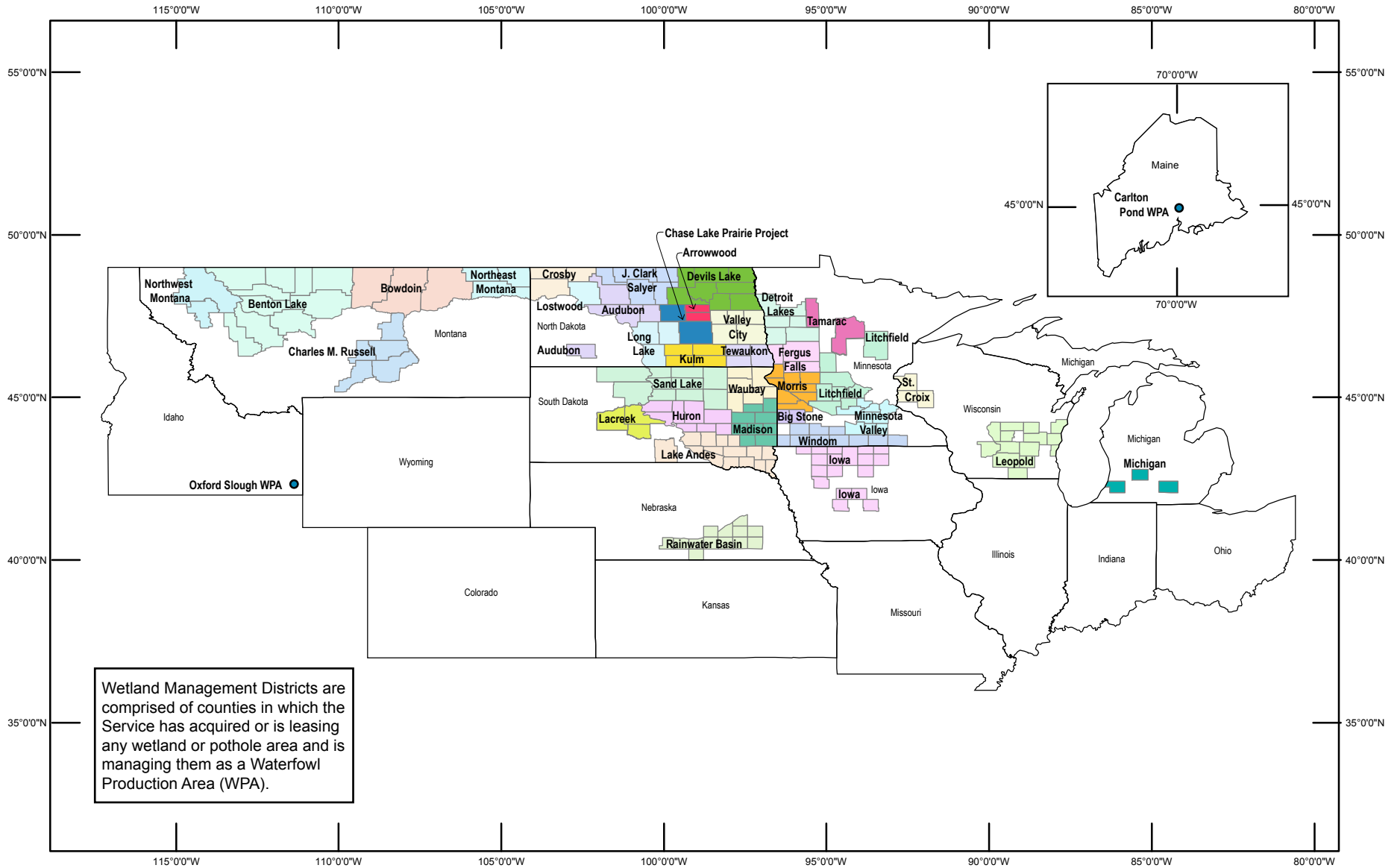
* - Counted in another State
 ** - Denotes interests transferred by the FSA
 FSA - Farm Service Agency (formerly Farmers Home Administration, Department of Agriculture)



Wetland Management Districts of the National Wildlife Refuge System

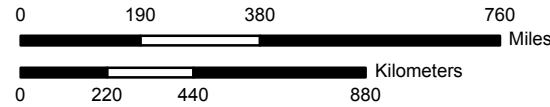
Waterfowl Production Area Counties

Idaho, Iowa, Maine, Michigan, Minnesota, Montana, Nebraska, North Dakota, South Dakota, Wisconsin



Wetland Management Districts are comprised of counties in which the Service has acquired or is leasing any wetland or pothole area and is managing them as a Waterfowl Production Area (WPA).

PRODUCED IN THE DIVISION OF REALTY
WASHINGTON, D.C.
LAND STATUS CURRENT TO: 9/30/2008
BASEMAP: ESRI
DATUM: WGS 1984
MAP NAME: WMDs2008



WGS 1984

ANNUAL REPORT OF THE MIGRATORY BIRD CONSERVATION COMMISSION
MIGRATORY BIRD CONSERVATION FUND ACQUISITIONS
TABLE TWO
NATIONAL WATERFOWL PRODUCTION AREAS

STATE AND UNIT	FISCAL YEAR MBCF ACQUISITION				CUMULATIVE TOTALS AT END OF FISCAL YEAR					
	PURCHASED		EASEMENT OR LEASE		MBCF				ALL OTHER ACRES	TOTAL ACRES
	ACRES	COST	ACRES	COST	ACRES	COST	ACRES	COST		
LAKE ANDES WMD										
AURORA *	0.00	0.00	1,824.97	936,175.00	4,716.08	622,316.00	38,105.05	6,226,545.00	495.90	43,317.03
BON HOMME *	0.00	0.00	0.00	0.00	1,174.17	323,624.90	159.00	4,305.00	93.73	1,426.90
BRULE	0.00	0.00	195.50	115,525.00	1,074.13	89,404.00	20,105.76	2,722,030.00	844.43	22,024.32
CHARLES MIX *	0.00	0.00	430.00	213,725.00	4,110.82	1,162,147.00	8,721.76	1,617,410.00	1,396.31	14,228.89
CLAY *	0.00	0.00	0.00	0.00	40.00	8,000.00	7.00	200.00	52.50	99.50
DAVISON *	0.00	0.00	340.94	225,525.00	229.92	24,540.00	519.94	239,890.00	175.10	924.96
DOUGLAS *	0.00	0.00	140.32	36,325.00	3,852.05	647,691.00	3,953.28	433,150.00	713.17	8,518.50
HANSON *	0.00	0.00	0.00	0.00	1,075.60	281,853.00	2,680.48	136,130.00	132.80	3,888.88
HUTCHINSON *	0.00	0.00	0.00	0.00	789.51	227,646.25	1,057.00	151,075.00	172.50	2,019.01
LINCOLN	0.00	0.00	0.00	0.00	177.22	39,925.00	300.50	112,645.00	0.00	477.72
TRIPP FSA **	0.00	0.00	0.00	0.00	0.00	0.00	0.00	0.00	5.90	5.90
TURNER *	0.00	0.00	0.00	0.00	850.09	430,044.90	353.00	106,090.00	126.90	1,329.99
UNION	0.00	0.00	0.00	0.00	96.02	22,331.00	0.00	0.00	0.00	96.02
YANKTON	0.00	0.00	0.00	0.00	294.63	128,562.00	123.00	5,375.00	365.60	783.23
WPA/COUNTY TOTAL 13	0.00	0.00	2,931.73	1,527,275.00	18,480.24	4,008,085.05	76,085.77	11,754,845.00	4,574.84	99,140.85
MADISON WMD										
BROOKINGS *	0.00	0.00	139.00	59,225.00	6,159.47	1,650,276.70	7,724.05	1,979,016.00	2,354.45	16,237.97
DEUEL *	0.00	0.00	481.55	232,700.00	3,208.87	481,522.00	26,328.15	2,901,950.00	1,958.89	31,495.91
HAMLIN *	0.00	0.00	0.00	0.00	3,375.89	943,938.00	6,020.24	1,006,305.00	323.90	9,720.03
KINGSBURY *	0.00	0.00	30.00	12,600.00	5,256.36	1,258,255.50	25,069.79	3,654,153.00	3,955.90	34,282.05
LAKE *	0.00	0.00	0.00	0.00	5,667.07	1,281,607.75	6,544.32	1,786,535.00	911.24	13,122.63
MCCOOK *	0.00	0.00	0.00	0.00	3,362.96	680,845.60	6,316.50	899,970.00	835.37	10,514.83
MINER *	0.00	0.00	0.00	0.00	1,545.87	153,695.00	24,122.94	5,736,065.00	1,299.80	26,968.61
MINNEHAHA *	106.40	242,000.00	0.00	0.00	4,606.03	1,342,286.00	1,640.96	351,295.00	10.00	6,256.99
MOODY *	0.00	0.00	0.00	0.00	2,903.78	927,478.85	1,959.02	645,930.00	705.89	5,568.69
WPA/COUNTY TOTAL 9	106.40	242,000.00	650.55	304,525.00	36,086.30	8,719,905.40	105,725.97	18,961,219.00	12,355.44	154,167.71
SAND LAKE WMD										
BROWN	0.00	0.00	26.00	16,975.00	4,094.93	819,223.80	50,753.78	6,833,225.00	1,444.49	56,293.20
CAMPBELL	0.00	0.00	1,861.35	283,850.00	1,919.71	185,541.00	24,522.23	1,928,630.00	395.00	26,836.94
CORSON FSA **	0.00	0.00	0.00	0.00	0.00	0.00	0.00	0.00	1,105.90	1,105.90
DEWEY FSA **	0.00	0.00	0.00	0.00	0.00	0.00	0.00	0.00	2,361.80	2,361.80
EDMUNDS *	0.00	0.00	5,024.75	2,284,725.00	8,965.76	1,717,201.00	128,928.82	12,623,085.00	1,790.05	139,684.63
FAULK *	0.00	0.00	1,627.24	678,840.00	2,566.88	480,995.00	135,931.12	10,580,965.00	2,965.49	141,463.49
MCPHERSON *	0.00	0.00	581.37	119,825.00	19,254.66	3,375,636.80	144,703.62	8,386,265.00	12,256.24	176,214.52
POTTER *	0.00	0.00	707.00	111,000.00	652.63	71,179.00	24,694.81	1,561,555.00	415.10	25,762.54
SPINK *	0.00	0.00	683.22	366,300.00	2,225.17	388,656.00	28,656.27	4,009,000.00	1,308.20	32,189.64
WALWORTH *	0.00	0.00	680.11	101,700.00	1,524.54	191,800.00	20,394.30	1,670,165.00	553.30	22,472.14
WPA/COUNTY TOTAL 8	0.00	0.00	11,191.04	3,963,215.00	41,204.28	7,230,256.60	558,584.95	47,592,890.00	24,595.57	624,384.80
WAUBAY WMD										
CLARK *	0.00	0.00	0.00	0.00	5,873.11	814,503.90	45,776.86	2,972,475.00	1,186.43	52,836.40
CODINGTON *	0.00	0.00	0.00	0.00	5,089.31	882,837.70	10,728.65	767,515.00	1,566.65	17,384.61
DAY	0.00	0.00	0.00	0.00	6,332.63	457,107.00	44,831.81	3,126,020.00	1,653.75	52,818.19
GRANT	0.00	0.00	0.00	0.00	5,362.99	1,005,000.00	20,760.42	2,042,860.00	10.00	26,133.41
MARSHALL *	0.00	0.00	0.00	0.00	10,098.51	1,923,929.00	57,418.35	4,251,231.00	966.90	68,483.76
ROBERTS *	0.00	0.00	0.00	0.00	5,032.73	625,710.80	50,158.30	3,165,250.00	2,594.11	57,785.14
WPA/COUNTY TOTAL 6	0.00	0.00	0.00	0.00	37,789.28	5,709,088.40	229,674.39	16,325,351.00	7,977.84	275,441.51
STATE TOTAL 44	105.65	242,000.00	19,441.96	8,080,115.00	146,732.98	28,213,892.49	1,182,632.46	122,990,259.00	79,029.57	408,395.01
WISCONSIN										
LEOPOLD WMD										
ADAMS	0.00	0.00	0.00	0.00	344.00	172,500.00	0.00	0.00	0.00	344.00
COLUMBIA	26.70	53,500.00	0.00	0.00	3,393.54	3,630,316.45	0.00	0.00	26.00	3,419.54
DANE	0.00	0.00	0.00	0.00	1,535.58	1,984,875.65	0.00	0.00	55.50	1,591.08
DODGE	81.82	273,000.00	0.00	0.00	698.98	1,057,371.16	0.43	1,000.00	109.81	809.22
FOND DU LAC	0.00	0.00	0.00	0.00	676.56	881,888.00	0.00	0.00	284.84	961.40
JEFFERSON	0.00	0.00	0.00	0.00	249.79	241,239.00	0.00	0.00	0.00	249.79
MANITOWOC	0.00	0.00	0.00	0.00	256.13	186,000.00	0.00	0.00	0.00	256.13
MARQUETTE	0.00	0.00	0.00	0.00	259.97	119,480.00	0.00	0.00	0.00	259.97
OZAUKEE	0.00	0.00	0.00	0.00	556.30	857,413.40	0.00	0.00	0.00	556.30

ANNUAL REPORT OF THE MIGRATORY BIRD CONSERVATION COMMISSION
MIGRATORY BIRD CONSERVATION FUND ACQUISITIONS
TABLE TWO
NATIONAL WATERFOWL PRODUCTION AREAS

STATE AND UNIT	FISCAL YEAR MBCF ACQUISITION				CUMULATIVE TOTALS AT END OF FISCAL YEAR						
	PURCHASED		EASEMENT OR LEASE		MBCF				ALL OTHER ACRES	TOTAL ACRES	
	ACRES	COST	ACRES	COST	PURCHASED		EASEMENT OR LEASE				
				ACRES	COST	ACRES	COST				
ROCK	0.00	0.00	0.00	0.00	349.32	302,358.71	0.00	0.00	0.00	349.32	
SAUK	0.00	0.00	0.00	0.00	0.00	0.00	0.00	0.00	210.88	210.88	
SHEBOYGAN	0.00	0.00	0.00	0.00	485.92	1,322,636.94	0.00	0.00	223.99	709.91	
WAUSHARA	0.00	0.00	0.00	0.00	232.30	243,000.00	0.00	6,000.00	0.00	232.30	
WINNEBAGO	0.00	0.00	0.00	0.00	1,870.13	1,348,651.00	0.00	0.00	249.24	2,119.37	
WPA/COUNTY TOTAL	14	108.52	326,500.00	0.00	0.00	10,908.52	12,347,730.31	0.43	7,000.00	1,160.26	12,069.21
ST. CROIX WMD											
DUNN	0.00	0.00	0.00	0.00	471.18	502,200.00	0.00	0.00	150.80	621.98	
POLK	0.00	0.00	0.00	0.00	845.09	417,424.00	0.00	0.00	199.98	1,045.07	
ST. CROIX	69.76	550,000.00	0.00	0.00	5,402.02	7,698,904.56	0.64	1,500.00	220.41	5,623.07	
WPA/COUNTY TOTAL	3	69.76	550,000.00	0.00	0.00	6,718.29	8,618,528.56	0.64	1,500.00	571.19	7,290.12
STATE TOTAL	17	178.28	876,500.00	0.00	0.00	17,626.81	20,966,258.87	1.07	8,500.00	1,731.45	19,359.33
GRAND TOTAL	206	1,707.39	5,938,200.00	27,515.92	10,392,027.76	681,647.57	215,340,013.91	2,238,302.86	199,278,242.71	451,492.59	3,371,443.02

* - These counties include interests transferred by the FSA

** - Denotes interests transferred by the FSA

FSA - Farm Service Agency (Formerly Farmers Home Administration, Department of Agriculture)

North American Wetlands Conservation Fund

Summary of MBCC Approvals for Fiscal Year 2008

The Migratory Bird Conservation Commission approved 76 wetland conservation project proposals for funding in Fiscal Year 2008 under the North American Wetlands Conservation Act. A total of \$77,806,969 from the North American Wetlands Conservation Fund

(Fund), together with \$216,000,976 in partner funds, are supporting 52 projects in the United States, 7 in Canada, and 17 in Mexico. The following tables provide summary and detailed project information.

Fiscal Year 2008

Projects Approved by the Migratory Bird Conservation Commission and Active Under the North American Wetlands Conservation Act

<i>Country</i>	<i>Number of Projects</i>	<i>Act Funds</i>	<i>Partner Funds</i>	<i>Acres Affected</i>
U.S.	52	\$47,739,107	\$169,001,048	369,387
Canada	7	\$26,507,179	\$41,501,737	96,192
Mexico	17	\$3,560,683	\$5,498,191	108,504
Total	76	\$77,806,969	\$216,000,976	574,083
U.S. Small Grants	62	\$4,176,438	\$28,895,544	29,068

In addition, the Commission approved 62 United States small grant proposals, totaling \$4,176,438 from the Fund, supported by \$28,895,544 in partner funds, affecting 29,068 acres.

United States Wetlands Conservation Standard Grant Proposal Approvals

Table Three

State	NAWCA Grant (\$)	Non-Fed Match	Non-Fed Non-Match	Federal Non-Match	Total Partners	Total Cost	Total Acres	MBCB Approval
CA	\$1,000,000	\$2,883,461	\$433,787	\$2,279,482	\$5,596,730	\$6,596,730	3,737	3/12/08
AR	\$909,138	\$2,110,144	\$0	\$66,000	\$2,176,144	\$3,085,282	13,372	3/12/08
MT	\$811,149	\$1,623,889	\$0	\$10,000	\$1,633,889	\$2,445,038	4,452	9/12/07
WA	\$618,000	\$1,594,500	\$290,000	\$696,000	\$2,580,500	\$3,198,500	2,112	9/12/07
NJ	\$991,000	\$2,134,000	\$2,800,000	\$2,141,000	\$7,075,000	\$8,066,000	727	3/12/08
ME	\$666,566	\$1,422,500	\$0	\$5,000	\$1,427,500	\$2,094,066	3,804	3/12/08
MT	\$1,000,000	\$2,000,000	\$0	\$1,788,600	\$3,788,600	\$4,788,600	12,149	3/12/08
ND	\$1,000,000	\$1,002,685	\$0	\$224,000	\$1,226,685	\$2,226,685	37,313	3/12/08
NC	\$1,000,000	\$3,612,000	\$0	\$500,000	\$4,112,000	\$5,112,000	739	9/12/07
TX	\$1,000,000	\$2,205,357	\$0	\$0	\$2,205,357	\$3,205,357	4,630	9/12/07
OR, WA	\$1,000,000	\$2,044,800	\$476,000	\$11,000	\$2,531,800	\$3,531,800	4,886	3/12/08
OK	\$700,000	\$1,407,482	\$0	\$191,920	\$1,599,402	\$2,299,402	3,000	9/12/07
CA	\$1,000,000	\$3,222,559	\$25,320	\$139,601	\$3,387,480	\$4,387,480	6,007	3/12/08
UT	\$465,000	\$932,178	\$0	\$58,492	\$990,670	\$1,455,670	14,796	9/12/07
LA	\$998,391	\$2,259,440	\$0	\$3,465	\$2,262,905	\$3,261,296	1,367	9/12/07
SD	\$1,000,000	\$1,018,250	\$0	\$68,160	\$1,086,410	\$2,086,410	3,031	9/12/07
CA	\$1,000,000	\$2,102,700	\$0	\$0	\$2,102,700	\$3,102,700	2,384	9/12/07
HI	\$1,000,000	\$2,057,026	\$4,183,500	\$4,417,982	\$10,658,508	\$11,658,508	246	3/12/08
KS	\$468,000	\$940,682	\$20,000	\$500	\$961,182	\$1,429,182	1,130	9/12/07
RI	\$783,333	\$4,557,000	\$570,000	\$0	\$5,127,000	\$5,910,333	1,457	3/12/08
LA	\$781,840	\$2,233,504	\$0	\$16,792	\$2,250,296	\$3,032,136	3,920	3/12/08
TN	\$1,000,000	\$2,726,350	\$0	\$0	\$2,726,350	\$3,726,350	3,560	3/12/08
SC	\$1,000,000	\$2,100,000	\$0	\$0	\$2,100,000	\$3,100,000	3,962	3/12/08
MN	\$1,000,000	\$2,567,671	\$0	\$5,000	\$2,572,671	\$3,572,671	3,081	9/12/07
ND	\$1,000,000	\$1,027,182	\$0	\$104,100	\$1,131,282	\$2,131,282	15,808	9/12/07
MT	\$1,000,000	\$1,333,512	\$19,998	\$261,177	\$1,614,687	\$2,614,687	23,734	9/12/07
LA	\$998,576	\$2,175,513	\$0	\$0	\$2,175,513	\$3,174,089	2,337	3/12/08
ND	\$385,000	\$391,954	\$0	\$141,375	\$533,329	\$918,329	20,899	9/12/07
NC	\$999,067	\$2,202,436	\$0	\$0	\$2,202,436	\$3,201,503	3,812	3/12/08
NC	\$1,000,000	\$3,918,850	\$0	\$0	\$3,918,850	\$4,918,850	2,269	3/12/08
FL	\$1,000,000	\$2,045,400	\$0	\$0	\$2,045,400	\$3,045,400	3,328	3/12/08
CO	\$1,000,000	\$2,045,145	\$462,240	\$0	\$2,507,385	\$3,507,385	5,144	3/12/08
CA	\$1,000,000	\$2,651,653	\$0	\$0	\$2,651,653	\$3,651,653	6,593	3/12/08
CA	\$1,000,000	\$2,369,866	\$2,216,800	\$2,600,000	\$7,186,666	\$8,186,666	11,090	9/12/07
ND	\$1,000,000	\$1,095,010	\$0	\$238,500	\$1,333,510	\$2,333,510	43,570	9/12/07
MN	\$835,503	\$1,671,007	\$0	\$1,240,145	\$2,911,152	\$3,746,655	5,104	9/12/07
NE, WY	\$1,000,000	\$2,326,747	\$0	\$67,030	\$2,393,777	\$3,393,777	7,803	9/12/07
CO, NE	\$1,000,000	\$2,404,781	\$0	\$976,624	\$3,381,405	\$4,381,405	7,010	3/12/08
MD	\$800,000	\$1,860,394	\$0	\$3,960	\$1,864,354	\$2,664,354	890	9/12/07
IA	\$1,000,000	\$2,015,975	\$0	\$4,653,700	\$6,669,675	\$7,669,675	3,436	9/12/07
CT, MA	\$1,000,000	\$3,283,793	\$2,364	\$142,000	\$3,428,157	\$4,428,157	1,126	3/12/08
NE	\$736,037	\$736,527	\$100,254	\$22,837	\$859,618	\$1,595,655	2,653	3/12/08
LA	\$1,000,000	\$4,850,000	\$0	\$0	\$4,850,000	\$5,850,000	750	3/12/08
WA	\$964,507	\$970,788	\$5,000	\$0	\$975,788	\$1,940,295	325	3/12/08
CA	\$1,000,000	\$9,722,000	\$0	\$0	\$9,722,000	\$10,722,000	4,064	3/12/08
WI	\$1,000,000	\$3,062,444	\$0	\$65,000	\$3,127,444	\$4,127,444	2,627	3/12/08
CA	\$1,000,000	\$2,315,844	\$172,000	\$188,340	\$2,676,184	\$3,676,184	1,865	3/12/08
MI	\$1,000,000	\$2,118,000	\$0	\$69,000	\$2,187,000	\$3,187,000	664	3/12/08
CO	\$828,000	\$1,676,306	\$8,310,000	\$25,860	\$10,012,166	\$10,840,166	49,236	3/12/08
NC	\$1,000,000	\$3,182,601	\$0	\$0	\$3,182,601	\$4,182,601	979	3/12/08
WI	\$1,000,000	\$6,368,564	\$0	\$2,227,209	\$8,595,773	\$9,595,773	4,553	3/12/08
CA	\$1,000,000	\$2,574,345	\$0	\$109,119	\$2,683,464	\$3,683,464	1,857	9/12/07
Total	\$47,739,107	\$123,154,815	\$20,087,263	\$25,758,970	\$169,001,048	\$216,740,155	369,387	

United States Wetlands Conservation Small Grant Proposal Approvals

Table Four

NAWCA Grant (\$)	Non-Fed Match	Non-Fed Non-Match	Federal Non-Match	Total Partners	Total Cost	Total Acres	MBCC Approval
\$75,000	\$276,750	\$0	\$0	\$276,750	\$351,750	55	6/13/07
\$75,000	\$100,000	\$0	\$0	\$100,000	\$175,000	1,715	6/12/08
\$75,000	\$75,000	\$1,500	\$0	\$76,500	\$151,500	67	6/12/08
\$38,936	\$38,936	\$0	\$15,000	\$53,936	\$92,872	200	6/13/07
\$75,000	\$425,000	\$0	\$0	\$425,000	\$500,000	96	6/13/07
\$75,000	\$273,065	\$0	\$0	\$273,065	\$348,065	144	6/12/08
\$75,000	\$90,000	\$62,000	\$0	\$152,000	\$227,000	91	6/12/08
\$75,000	\$97,406	\$0	\$0	\$97,406	\$172,406	80	6/12/08
\$75,000	\$96,125	\$0	\$25,000	\$121,125	\$196,125	351	6/12/08
\$20,000	\$21,500	\$0	\$5,000	\$26,500	\$46,500	76	6/12/08
\$75,000	\$440,750	\$0	\$0	\$440,750	\$515,750	295	6/13/07
\$75,000	\$957,500	\$0	\$0	\$957,500	\$1,032,500	75	6/13/07
\$75,000	\$547,600	\$0	\$145,000	\$692,600	\$767,600	181	6/13/07
\$70,000	\$125,000	\$0	\$0	\$125,000	\$195,000	3,880	6/13/07
\$75,000	\$175,000	\$0	\$0	\$175,000	\$250,000	48	6/13/07
\$75,000	\$450,000	\$0	\$25,000	\$475,000	\$550,000	148	6/13/07
\$30,764	\$51,885	\$0	\$0	\$51,885	\$82,649	42	6/12/08
\$75,000	\$76,000	\$0	\$0	\$76,000	\$151,000	2,407	6/12/08
\$75,000	\$80,281	\$0	\$0	\$80,281	\$155,281	2,054	6/12/08
\$75,000	\$150,000	\$0	\$0	\$150,000	\$225,000	87	6/13/07
\$75,000	\$154,000	\$850,000	\$0	\$1,004,000	\$1,079,000	115	6/13/07
\$75,000	\$494,364	\$0	\$0	\$494,364	\$569,364	253	6/13/07
\$75,000	\$150,000	\$775,000	\$0	\$925,000	\$1,000,000	203	6/12/08
\$5,000	\$6,120	\$10,119	\$0	\$16,239	\$21,239	320	6/12/08
\$57,100	\$72,455	\$0	\$4,600	\$77,055	\$134,155	132	6/12/08
\$75,000	\$207,262	\$0	\$30,000	\$237,262	\$312,262	982	6/12/08
\$25,000	\$27,500	\$0	\$0	\$27,500	\$52,500	18	6/13/07
\$75,000	\$527,463	\$4,362,500	\$0	\$4,889,963	\$4,964,963	37	6/13/07
\$67,100	\$67,500	\$0	\$0	\$67,500	\$134,600	370	6/13/07
\$75,000	\$1,263,817	\$0	\$0	\$1,263,817	\$1,338,817	232	6/13/07
\$75,000	\$87,500	\$0	\$0	\$87,500	\$162,500	600	6/12/08
\$75,000	\$384,000	\$213,000	\$865,000	\$1,462,000	\$1,537,000	4,289	6/13/07
\$75,000	\$75,750	\$0	\$0	\$75,750	\$150,750	38	6/12/08
\$30,000	\$152,703	\$1,280	\$14,427	\$168,410	\$198,410	1,042	6/12/08
\$75,000	\$75,000	\$0	\$30,000	\$105,000	\$180,000	269	6/12/08
\$75,000	\$75,000	\$0	\$4,200	\$79,200	\$154,200	638	6/13/07
\$75,000	\$98,920	\$3,600	\$6,100	\$108,620	\$183,620	67	6/13/07
\$75,000	\$316,255	\$0	\$5,000	\$321,255	\$396,255	72	6/13/07
\$75,000	\$336,995	\$0	\$5,000	\$341,995	\$416,995	78	6/13/07
\$39,791	\$41,561	\$0	\$5,000	\$46,561	\$86,351	36	6/12/08
\$55,660	\$60,751	\$0	\$0	\$60,751	\$116,411	138	6/13/07
\$75,000	\$78,075	\$0	\$16,050	\$94,125	\$169,125	457	6/12/08
\$75,000	\$83,500	\$0	\$0	\$83,500	\$158,500	70	6/13/07
\$52,000	\$62,188	\$0	\$17,000	\$79,188	\$131,188	757	6/12/08
\$66,550	\$66,550	\$0	\$0	\$66,550	\$133,100	311	6/12/08
\$56,500	\$56,500	\$85,465	\$0	\$141,965	\$198,465	160	6/13/07
\$75,000	\$75,000	\$0	\$0	\$75,000	\$150,000	62	6/13/07
\$75,000	\$740,378	\$0	\$157,122	\$897,500	\$972,500	284	6/13/07
\$75,000	\$164,070	\$0	\$3,000	\$167,070	\$242,070	76	6/13/07
\$75,000	\$495,000	\$0	\$0	\$495,000	\$570,000	1,279	6/13/07
\$75,000	\$244,400	\$197,014	\$0	\$441,414	\$516,414	91	6/13/07
\$75,000	\$77,200	\$0	\$10,000	\$87,200	\$162,200	345	6/13/07
\$75,000	\$3,029,000	\$0	\$0	\$3,029,000	\$3,104,000	455	6/13/07
\$75,000	\$375,000	\$1,725,000	\$0	\$2,100,000	\$2,175,000	16	6/12/08
\$74,800	\$365,500	\$0	\$0	\$365,500	\$440,300	413	6/13/07
\$70,000	\$273,950	\$285,800	\$0	\$559,750	\$629,750	147	6/12/08
\$75,000	\$150,000	\$0	\$200,000	\$350,000	\$425,000	492	6/13/07
\$74,250	\$347,518	\$0	\$0	\$347,518	\$421,768	785	6/12/08
\$50,000	\$1,600,000	\$0	\$50,000	\$1,650,000	\$1,700,000	26	6/12/08
\$70,000	\$70,000	\$0	\$0	\$70,000	\$140,000	350	6/13/07
\$75,000	\$75,000	\$0	\$61,200	\$136,200	\$211,200	449	6/13/07
\$72,987	\$73,025	\$900,000	\$0	\$973,025	\$1,046,012	22	6/12/08
\$4,176,438	\$17,724,567	\$21,901,005	\$1,698,699	\$28,895,544	\$33,071,982	29,072	

Canadian Wetlands Conservation Proposal Approvals

Table Five

NAWCA Grant (\$)	Non-Fed Match	Non-Fed Non-Match	Fed Non-Match	Total Partners	Total Cost	Total Acres	MBC Approval
\$14,444,421	\$14,444,421	\$10,207,258	\$140,000	\$24,791,679	\$39,236,100	74,004	6/12/08
\$680,400	\$680,400	\$400,000	\$0	\$1,080,400	\$1,760,800	555	9/12/07
\$1,947,707	\$1,947,707	\$1,115,000	\$0	\$3,062,707	\$5,010,414	1,335	6/12/08
\$2,811,051	\$2,811,051	\$1,077,500	\$0	\$3,888,551	\$6,699,602	3,040	6/12/08
\$1,156,700	\$1,156,700	\$607,000	\$0	\$1,763,700	\$2,920,400	1,570	9/12/07
\$500,000	\$500,000	\$503,400	\$0	\$1,003,400	\$1,503,400	1,300	6/12/08
\$4,966,900	\$4,966,900	\$944,400	\$0	\$5,911,300	\$10,878,200	14,388	9/12/07
\$26,507,179	\$26,507,179	\$14,854,558	\$140,000	\$41,501,737	\$68,008,916	96,192	

Mexican Wetlands Conservation Proposal Approvals

Table Six

NAWCA Grant (\$)	Non-Fed Match	Non-Fed Non-Match	Fed Non-Match	Total Partners	Total Cost	Total Acres	MBCC Approval
\$374,764	\$794,200	\$0	\$0	\$794,200	\$1,168,964	3,789	3/12/08
\$154,863	\$182,879	\$0	\$0	\$182,879	\$337,742	0	3/12/08
\$216,055	\$217,305	\$0	\$0	\$217,305	\$433,360	1,483	3/12/08
\$151,323	\$239,887	\$0	\$0	\$239,887	\$391,210	741	3/12/08
\$383,345	\$684,251	\$0	\$0	\$684,251	\$1,067,596	0	6/12/08
\$73,094	\$77,902	\$0	\$0	\$77,902	\$150,996	0	3/12/08
\$80,000	\$120,000	\$0	\$0	\$120,000	\$200,000	0	3/12/08
\$260,447	\$315,868	\$0	\$0	\$315,868	\$576,315	1,902	3/12/08
\$256,215	\$823,512	\$0	\$0	\$823,512	\$1,079,727	247	6/12/08
\$130,260	\$147,860	\$0	\$0	\$147,860	\$278,120	29,651	3/12/08
\$373,560	\$400,080	\$0	\$0	\$400,080	\$773,640	13,513	3/12/08
\$208,737	\$209,621	\$0	\$0	\$209,621	\$418,358	26,180	3/12/08
\$124,744	\$196,809	\$0	\$0	\$196,809	\$321,553	0	3/12/08
\$78,828	\$82,921	\$0	\$0	\$82,921	\$161,749	556	3/12/08
\$331,440	\$404,140	\$0	\$0	\$404,140	\$735,580	12,350	3/12/08
\$236,555	\$341,715	\$0	\$0	\$341,715	\$578,270	16,745	3/12/08
\$126,453	\$259,241	\$0	\$0	\$259,241	\$385,694	1,347	3/12/08
\$3,560,683	\$5,498,191	\$0	\$0	\$5,498,191	\$9,058,874	108,504	

Membership of the National Migratory Bird Commission

Fiscal Year	Secretary of the Interior ¹	Secretary of Agriculture ²	Secretary of Commerce ³	Secretary of Transportation ⁴	Administrator of Environmental Protection Agency ⁵	Members on Part of the Senate	Members on Part of the House	Secretary to the Commission		
1929	Roy L. Wilbur	Arthur M. Hyde	Robert P. Lamont			Harry B. Hawes	Peter Norbeck	Sam D. McReynolds	Ernest R. Ackerman	Rudolph Dieffenbach
1930	"	"	"			"	"	"	"	"
1931	"	"	"			"	"	"	"	"
1932	"	"	"			"	"	"	"	"
1933	Harold L. Ickes	Henry A. Wallace	Daniel C. Roper			Key Pittman	"	"	August H. Anderson	"
1934	"	"	"			"	"	"	Roy O. Woodruff	"
1935	"	"	"			"	"	"	Chester C. Bolton	"
1936	"	"	"			"	"	"	"	"
1937	"	"	"			"	Charles L. McNary	"	James Wolfenden	"
1938	"	"	"			"	"	"	"	"
1939	"	"	Harry L. Hopkins			"	"	"	"	"
1940	"	"	"			"	"	John J. Cochran	"	"
1941	"	Claude R. Wickard	Jessie H. Jones			George L. Radcliffe	"	"	"	"
1942	"	"	"			"	"	"	"	"
1943	"	"	"			"	"	"	"	"
1944	"	"	"			"	Vacant	"	Walter E. Brehm	"
1945	"	Clinton P. Anderson	Henry A. Wallace			"	C. Wayland Brooks	"	"	"
1946	Julius A. Krug	"	"			"	"	"	"	"
1947	"	Charles F. Brannon	W. Averell Harriman			A. Willis Robertson	"	Frank M. Karsten	"	"
1948	"	"	Charles W. Sawyer			"	"	"	"	Arthur A. Riemer
1949	"	"	"			"	Raymond E. Baldwin	"	"	"
1950	Oscar L. Chapman	"	"			"	Vacant	"	"	"
1951	"	"	"			"	John W. Bricker	"	"	"
1952	"	"	"			"	"	"	August H. Anderson	"
1953	Douglas McKay	Ezra Taft Benson	Sinclair Weeks			"	"	"	"	"
1954	"	"	"			"	"	"	"	"
1955	"	"	"			"	"	"	"	"
1956	Fred A. Seaton	"	"			"Thomas C. Hennings, Jr."	"	"	"	"
1957	"	"	"			"	"	"	"	Albert J. Rissman
1958	"	"	"			"	"	"	Leon H. Gavin	"
1959	"	"	"			"	Roman L. Hruska	"	"	"
1960	"	"	Lewis L. Strauss			"	"	"	"	"
1961	Stewart L. Udall	Orville L. Freeman	Frederick H. Meuller			Lee Metcalf	"	"	"	"
1962	"	"	Luther H. Hodges			"	"	"	"	"
1963	"	"	"			"	"	"	"	"
1964	"	"	"			"	"	"	George A. Gooding	"
1965	"	"	John T. Connor			"	"	"	Silvio O. Conte	F.G. Spoden Jr.
1966	"	"	"			"	"	"	"	"
1967	"	"	Alexander B. Trowbridge			"	"	"	"	"
1968	"	"	"			"	"	"	"	"
1969	Walter J. Hickel	Clifford M. Hardin	"	Alan S. Boyd		"	Henry L. Bellman	John D. Dingell	"	"
1970	"	"	"	John A. Volpe		"	"	"	"	"
1971	Roger C.B. Morton	"	"	"		Joseph D. Tydings	"	"	"	Walter R. McAllester
1972	"	Earl L. Butz	"	"		Lee Metcalf	"	"	"	"
1973	"	"	"	Claude S. Brinegar		"	"	"	"	"
1974	"	"	"	"		"	"	"	"	"
1975	Stanley Hathaway	"	"	William T. Coleman		Quentin N. Burdick	"	"	"	"
1976	Thomas S. Kleppe	"	"	"		"	"	"	"	"
1977	Cecil D. Andrus	Bob Bergland	"	Brook Adams		Floyd K. Haskell	"	"	"	"
1978	"	"	"	"		"	"	"	"	"
1979	"	"	"	Neil Goldschmidt		David H. Pryor	"	"	"	"
1980	"	"	"	"		"	"	"	"	"
1981	James G. Watt	James R. Block	"	Drew Lewis		"	Thad Cochran	"	"	"
1982	"	"	"	"		"	"	"	"	"
1983	"	"	"	Elizabeth H. Dole		"	"	"	"	"
1984	William P. Clark	"	"	"		"	"	"	"	"
1985	Donald Hodel	"	"	"		"	"	"	"	"
1986	"	Richard Lyng	"	"		"	"	"	"	William F. Hartwig
1987	"	"	"	"		"	"	"	"	"
1988	"	"	"	James Burnley IV		"	"	"	"	"
1989	Manuel Lujan Jr.	Clayton Yeutter	"	Samuel K. Skinner		"	"	"	"	"
1990	"	"	"	"	William K. Reilly	"	"	"	"	"
1991	"	Edward R. Madigan	"	"	"	"	"	"	Richard T. Schulze	"
1992	"	"	"	"	"	"	"	"	"	Geoffrey L. Haskett
1993	Bruce Babbitt	Mike Espy	"	"	Carol M. Browner	"	"	"	Curt Weldon	"
1994	"	"	"	"	"	"	"	"	"	"
1995	"	Daniel R. Glickman	"	"	"	"	"	"	"	Jeffrey M. Donahoe
1996	"	"	"	"	"	John B. Breaux	"	"	"	"
1997	"	"	"	"	"	"	"	"	"	"
1998	"	"	"	"	"	"	"	"	"	"
1999	"	"	"	"	"	"	"	"	"	"
2000	"	"	"	"	"	"	"	"	"	"
2001	Gale Norton	Ann M. Veneman	"	"	Christine Todd-Whitman	"	"	"	"	"
2002	"	"	"	"	"	"	"	"	"	"
2003	"	"	"	"	Michael O. Leavitt	"	"	"	"	A. Eric Alvarez
2004	"	"	"	"	"	"	"	"	"	"
2005	"	Mike Johanns	"	"	Stephen L. Johnson	Blanche L. Lincoln	"	"	"	"
2006	Dirk Kempthorne	"	"	"	"	"	"	"	"	"
2007	"	"	"	"	"	"	"	"	Wayne T. Gilcrest	"
2008	"	Edward Schafer	"	"	"	"	"	"	"	"

Footnotes: 1 - Chairman, 1940 to date; 2 - Chairman, 1929 to 1939; 3 - Member, 1929 to March 1, 1968; 4 - Member, March 2, 1968 to December 12, 1989; 5 - Member, December 13, 1989 to date



CANADA
GOOSE

