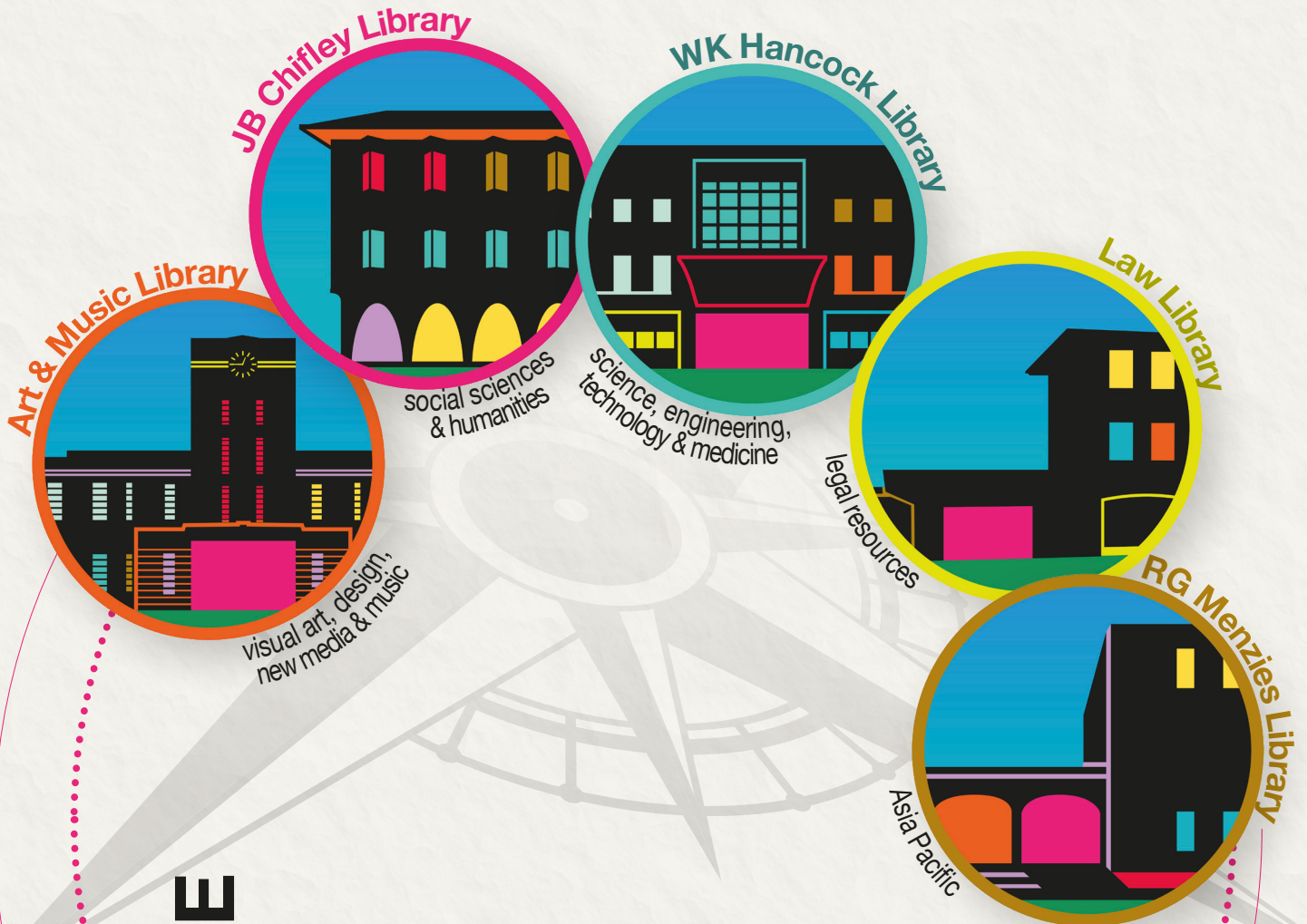


ANU Library

One Library, five specialised branches



GUIDE for NEW STUDENTS

➔ To access all ANU Library collections
& resources visit anulib.anu.edu.au



Tips for new students

The ANU Library offers a wealth of information including print, multimedia and online resources to assist with your studies

The JB Chifley and WK Hancock branches are open 24/7, and you can access online resources anytime from anywhere

Take an ANU Library tour

You don't need to navigate the ANU Library alone! Join a tour during the first few weeks of the semester and learn how to access the scholarly information you will need for your University work.

Tours are offered for all five specialised ANU Library branches, which include an overview of the ANU Library catalogue and electronic resources. Visit anulib.anu.edu.au/events

Branch opening hours

Opening hours for all ANU Library branches are available at main entries and by visiting anulib.anu.edu.au/opening-hours — 24/7 access is available at both the JB Chifley and WK Hancock branches.

Finding items

Search using the ANU Library catalogue or SuperSearch which provides a single search across ANU Library collections including journal and newspaper articles, books, reviews, dissertations and electronic resources such as websites and journals. Visit anulib.anu.edu.au/find-access

Library staff at the Information Desk in any branch are happy to assist with finding items, or you can email your query to library.info@anu.edu.au

Borrowing items

Users can find information on types of borrowing on the Library website — anulib.anu.edu.au/using-library/borrow

If the ANU Library does not have the item you need, students may request and borrow resources from other libraries. Visit anulib.anu.edu.au/using-library/request

Items requested from the ANU Library's off-site storage (ANU Print Repository) will be delivered within 24-hours to the JB Chifley Library reserve shelves.

Returning items

You can return items via the return chute at any ANU Library branch. Return chutes are marked for general or short loan returns. Don't forget to return them on time, as Library fines apply!

You can renew items you have on loan on the ANU Library website *My Library Record* page at anulib.anu.edu.au/my-library-record

Training

A range of workshops are offered to help with your research and studies — anulib.anu.edu.au/research-learn

The ANU Library has produced a range of subject and how to guides to assist with your studies, as well as a collection of past exam papers in a range of subject areas.

Need assistance?

If you need any assistance with using the ANU Library, don't hesitate to talk to your friendly librarians — they're here to help! For help locating archival materials to support your research, contact the ANU Archives at archives.anu.edu.au

For any IT related questions, JB Chifley Library also has the AskANU IT desk.

If you have a general question or are unsure about whom to ask, email your query to library.info@anu.edu.au

Survival guide for your ANU Library study sessions

ANU ID card

Make sure you have your ANU ID card on you at all times. You will need it for borrowing, printing and scanning, as well as to access the 24/7 spaces at JB Chifley and WK Hancock Libraries.

Computers

PCs, Mac computers and study spaces with power outlets, as well as printers, scanners and copiers are available for use in all ANU Library branches.

Find out in real time how many PCs are available in ANU Library spaces at anulib.anu.edu.au/pcs

Noise in the ANU Library

Please respect the noise rules of the space you are in — social, quiet and silent zones are marked within ANU Library spaces. Bring your headphones if you're planning on listening to music.

Book a group study room

If you're after a space to study on your own or for conversation and collaboration, the ANU Library has a range of group study rooms that can be booked at anulib.anu.edu.au/group-study-room

Food and drink in ANU Library spaces

Cooked food is only allowed in the WK Hancock Library and uncovered drinks are not allowed in any ANU Library spaces. No food or drink is allowed at the computers.

Cooked food odours may be unpleasant for Library users, while uncovered drinks can cause damage to materials and equipment.

Safety on campus

Download the official ANUOK app and visit services.anu.edu.au/campus-environment/safety-security for personal safety support services provided at ANU.

Your stuff

Unattended belongings left in ANU Library spaces may be removed without notice — it's inconsiderate to occupy desks with your things, and they might get stolen or go missing!

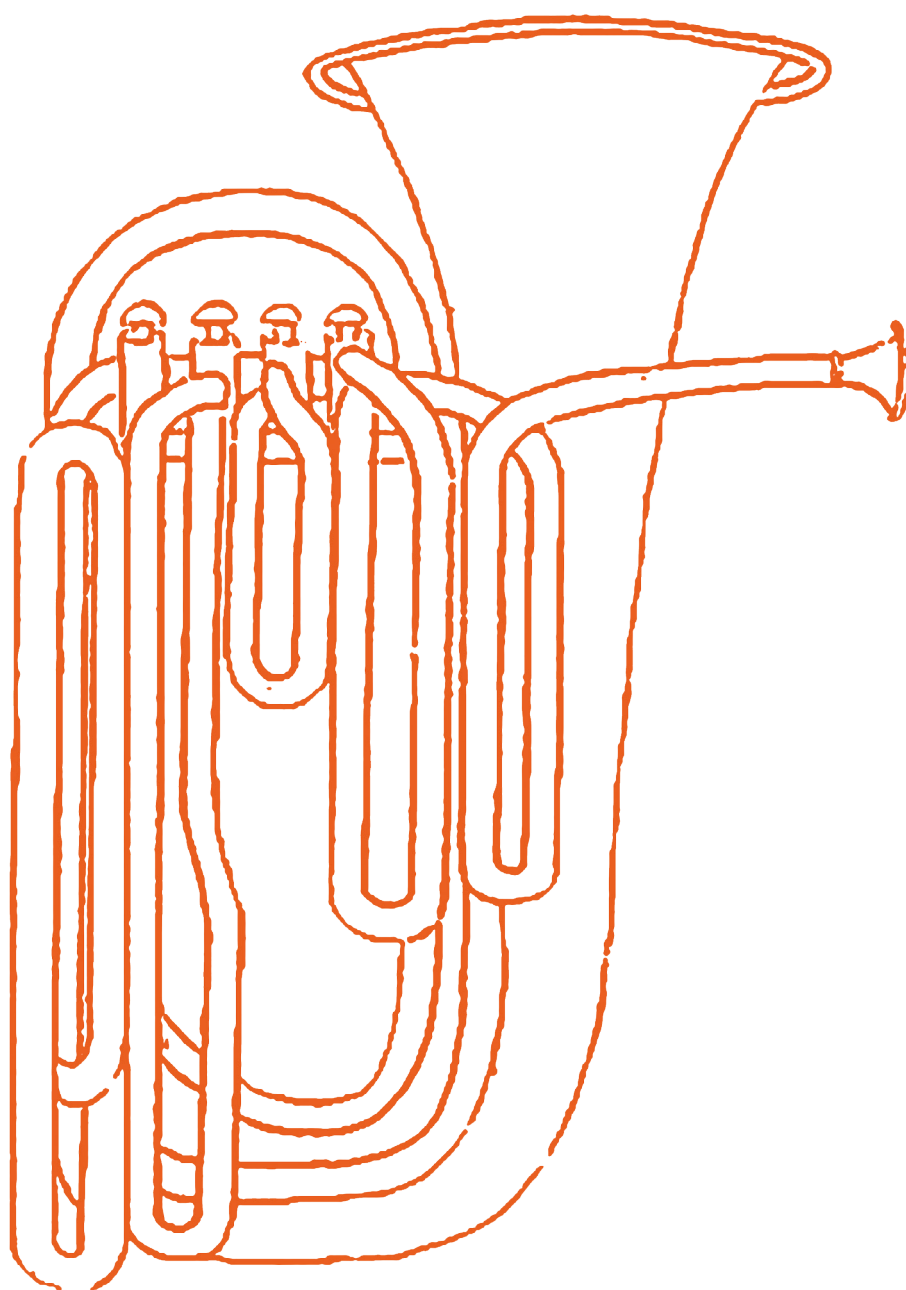


Art & Music Library

The Art & Music Library collection includes Visual Art, Design and New Media (such as exhibition catalogues and image databases) and Music (such as scores and performance materials, recordings and music streaming databases).

Colour a collection

Colour this page from *The instruments of the modern orchestra & early records of the precursors of the violin family: with over 500 illustrations and plates*, by Kathleen Schlesinger, which is found at the Art & Music Library.



JB Chifley Library



The JB Chifley Library collection includes anthropology, archaeology, art history, classics, commerce, economics, film, finance, gender studies, history, language and literature, linguistics, philosophy, political science, religion and sociology.

Colour a collection

Colour this page from *Shakespeare's Puck and his folkslore: illustrated from the superstitions of all nations, but more especially from the earliest religion and rites of the northern Europe and the Wends, Volume 1*, by William Bell, which is found at the JB Chifley Library.



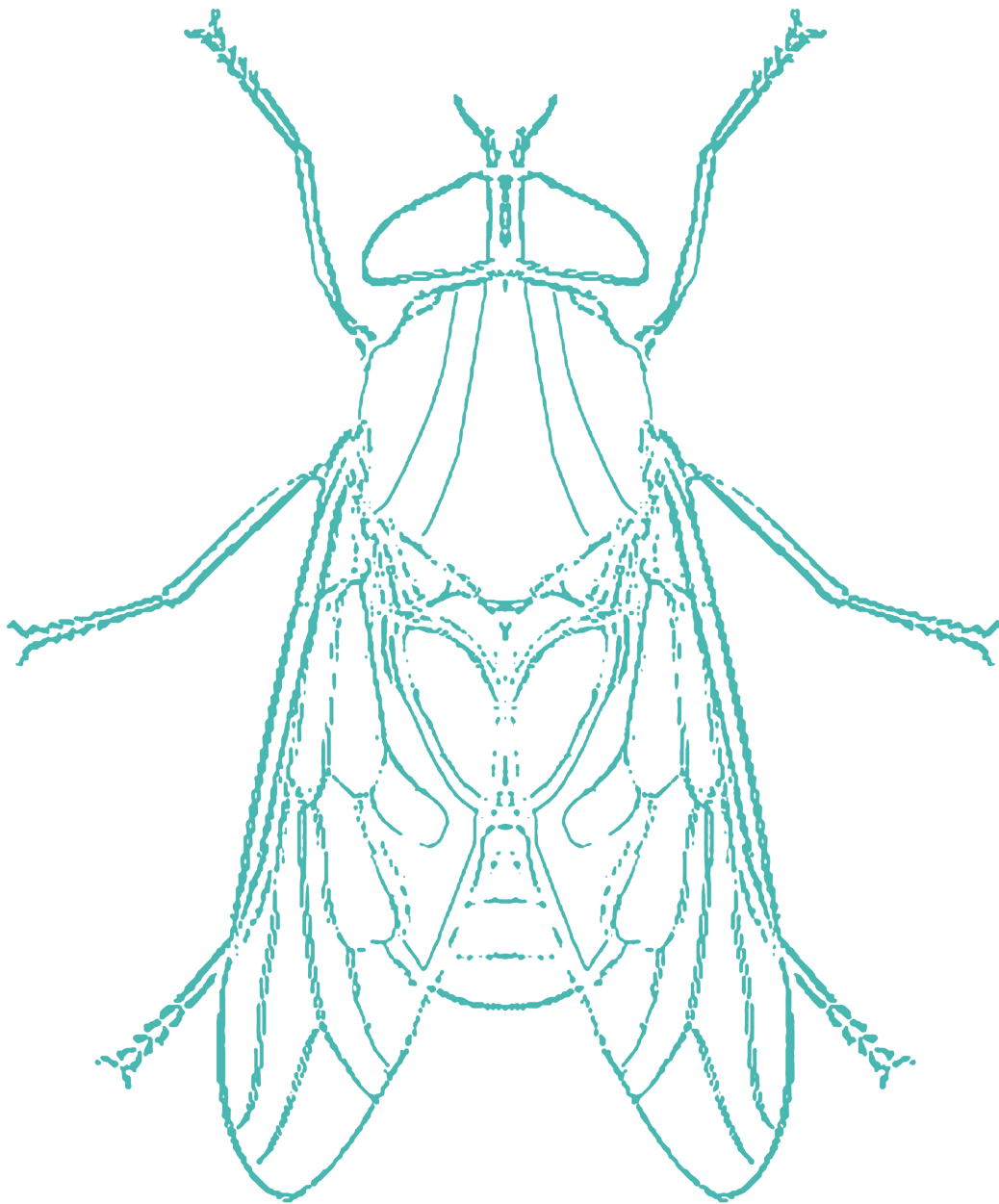


WK Hancock Library

The WK Hancock Library collection includes general science; history and philosophy of science; science policy; chemistry; mathematical and computing sciences; physics; psychology, biological and medical sciences; forestry, geography, geology, earth and environmental sciences; and engineering and technology.

Colour a collection

Colour this page from *Illustrations of British blood-sucking flies*, by Ernest Edward Austen, which is found at the WK Hancock Library.



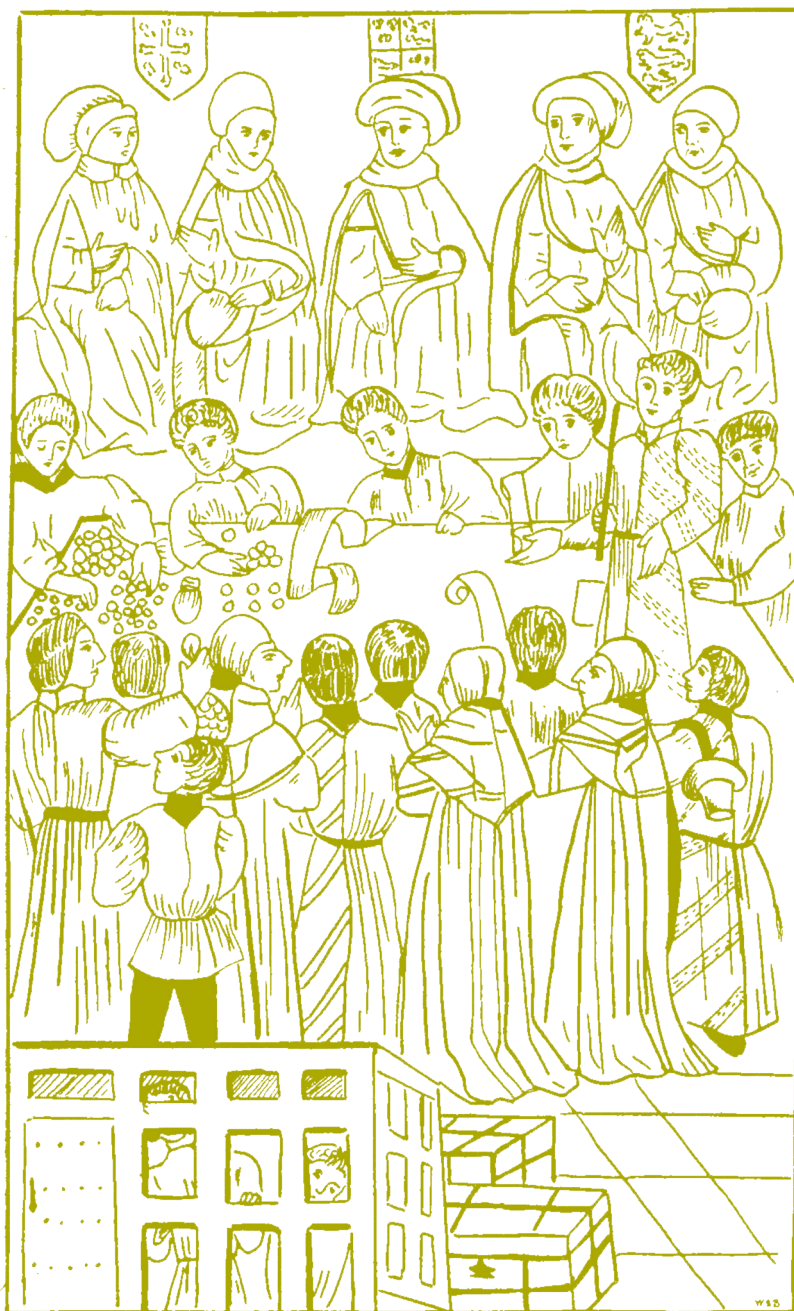
Law Library



The Law Library collection includes public and international law resources, including statutes and case law, plus a wide range of textbooks and journals and a law reform commission collection.

Colour a collection

Colour this page from *The king's peace; a historical sketch of the English law courts*, by F. A Inderwick, which is found at the Law Library.



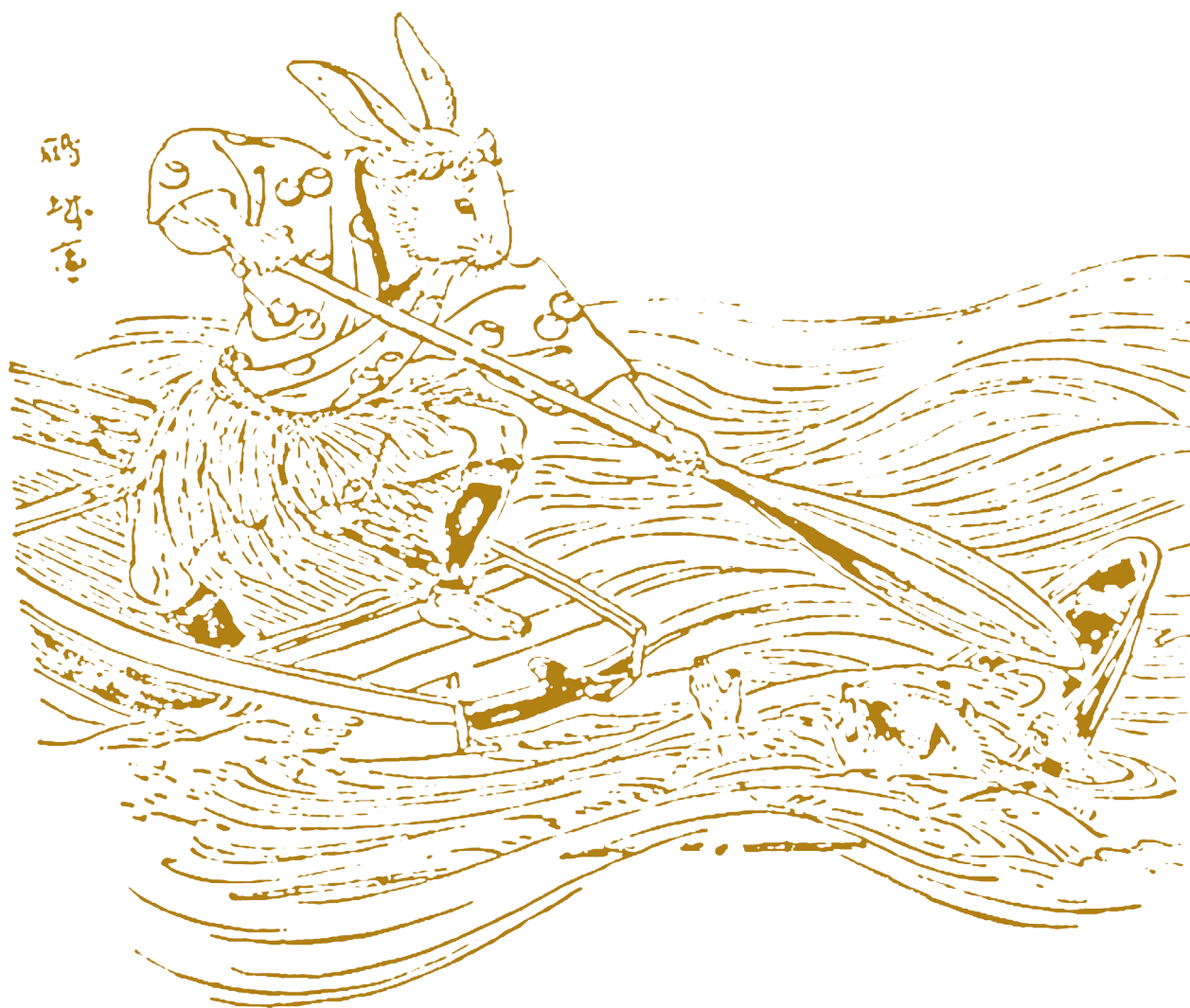


RG Menzies Library

The RG Menzies Library collection includes a range of materials to support Asia Pacific studies in the fields of history; anthropology; politics and international relations; literature and language; religion and philosophy; as well as rare books, manuscripts and special collections.

Colour a collection

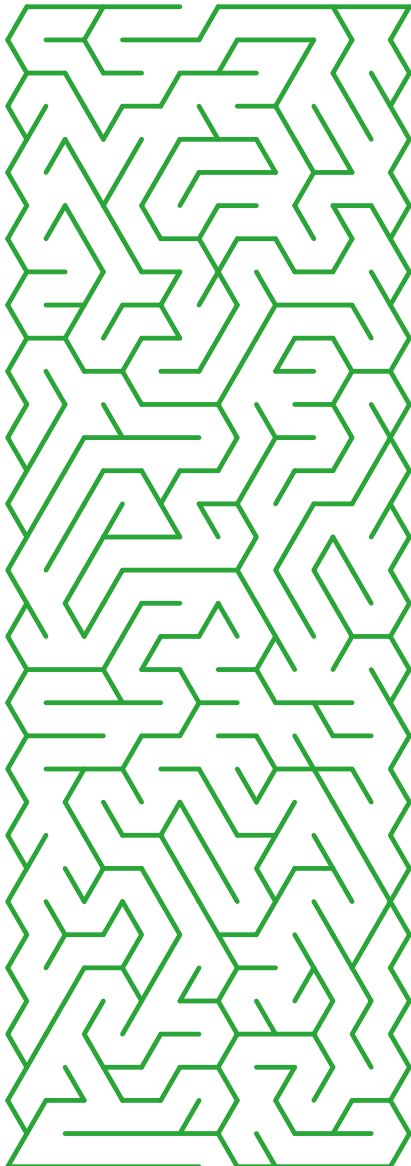
Colour this page from *The Japanese fairy-book*, by Yei Theodora Ozaki, which is found at the RG Menzies Library.



Know your sound zones!

Each ANU Library branch has designated sound zones — **silent**, **quiet** and **social**. The students below have to navigate a maze to find their ideal study spots, but it will be much easier for you to find your favourite zone in ANU Library branches!

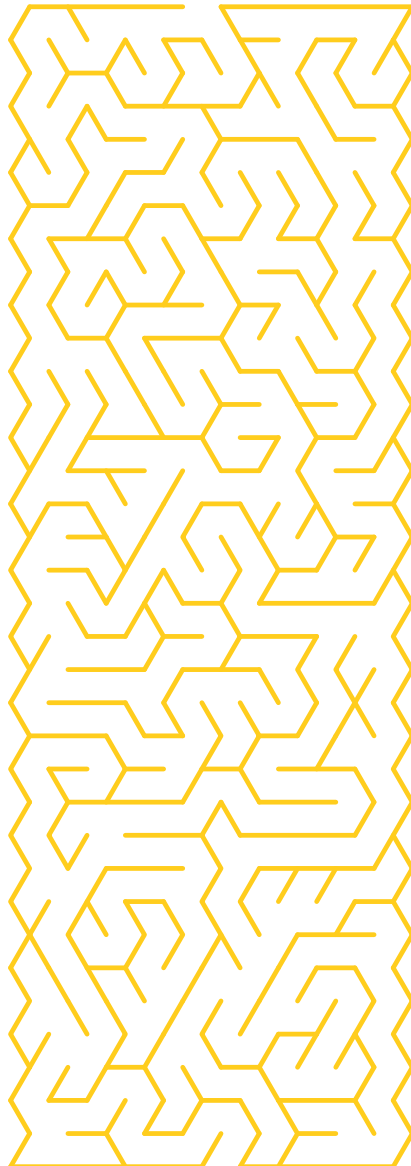
We like to collaborate and discuss things in a social atmosphere...



Copyright © 2018 JGB Service, <http://www.mazegenerator.net/>



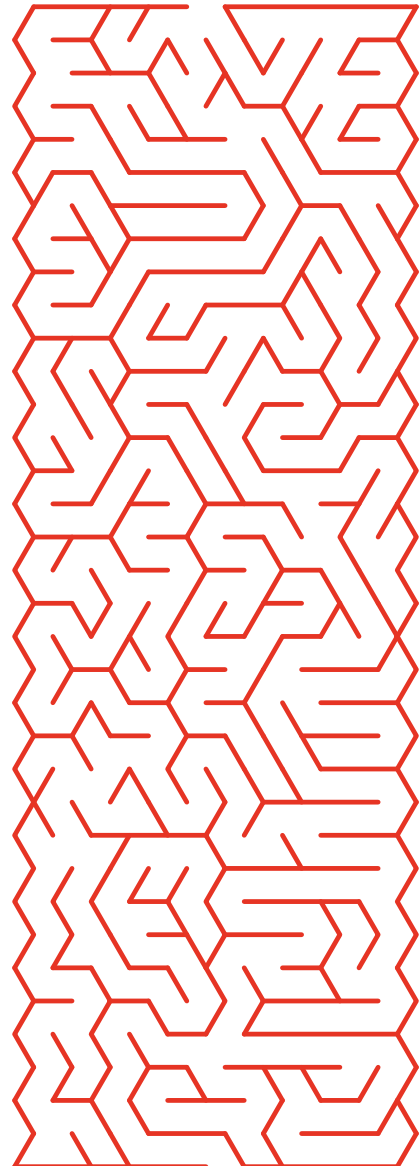
A little bit of noise is OK, but I really need a bit of peace to concentrate...



Copyright © 2018 JGB Service, <http://www.mazegenerator.net/>



I need total silence in order to study for an exam...



Copyright © 2018 JGB Service, <http://www.mazegenerator.net/>



Need a solution? Don't we all. You might want to take a look at the inside back cover...



Scholarly Information Services

Scholarly Information Services is made up of the ANU Library, ANU Archives, ANU Open Research and ANU Press. Together they provide services to fulfill the need for ANU to be an effective part of the scholarly communication system.

Crossword

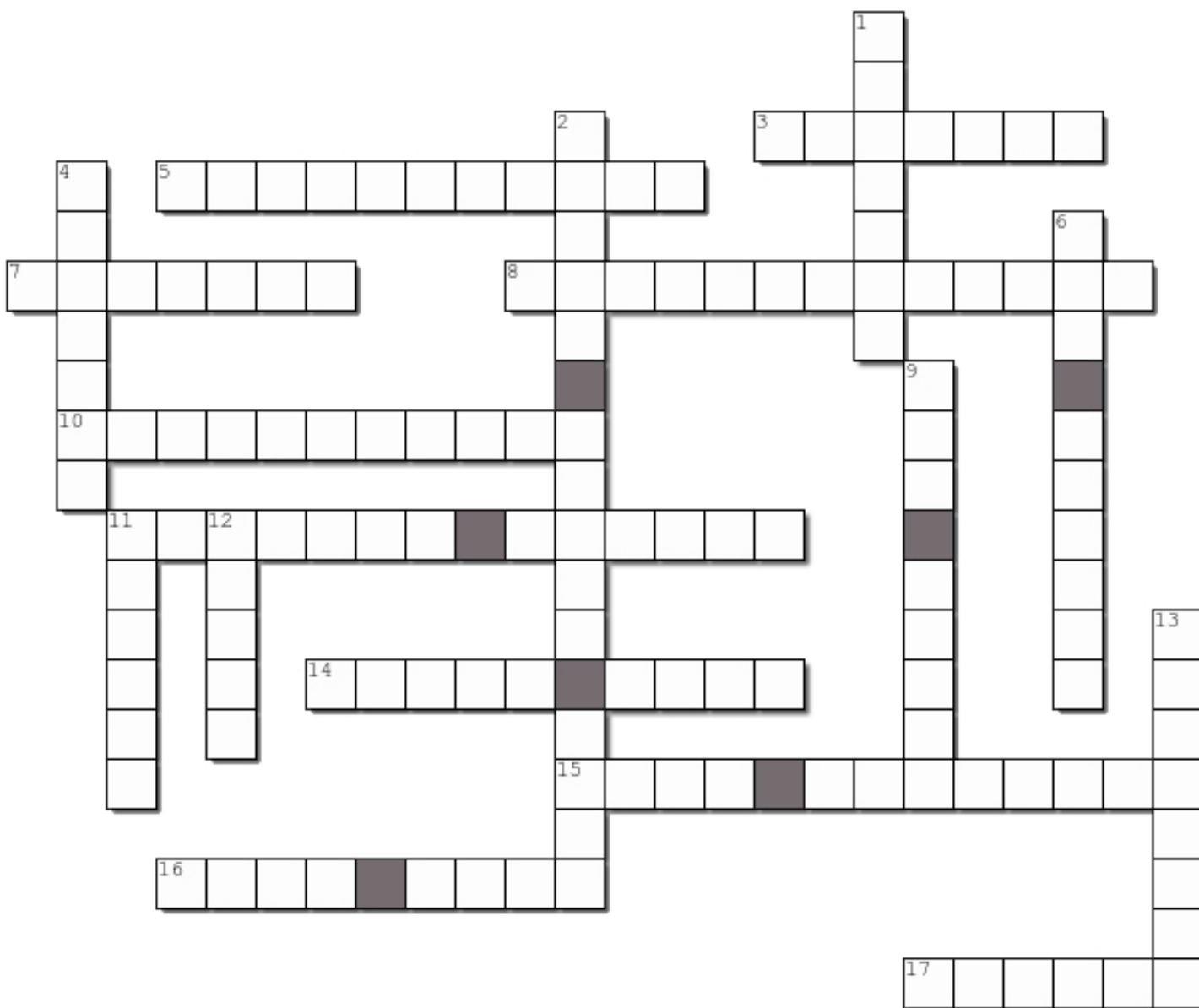
You can find all of the answers by searching the Library website anulib.anu.edu.au, the Archives website archives.anu.edu.au, the Open Research website openresearch.anu.edu.au and the ANU Press website press.anu.edu.au

Across

- 3 Specialist Asia Pacific Library branch
- 5 Provides a single search for resources across the entire ANU Library collection
- 7 Maximum number of ANU Library items an undergraduate can borrow
- 8 The Law Library collection includes statutes and case law from every Australian (and selected overseas) _____
- 10 A number of these are held each year to feature ANU Library and Archives collections
- 11 These guides offer specific resources for a broad range of disciplines
- 14 You can borrow these items for two hours
- 15 This ANU repository collects and maintains open access scholarly materials
- 16 These papers can help you study at the end of each semester
- 17 These works by ANU students starting from 1953 have been digitised

Down

- 1 You can catch the free shuttle to the National Library of Australia from outside this Library branch
- 2 Book one of these to study with your friends
- 4 The social sciences and humanities Library that is open 24/7
- 6 Recording studio located in the JB Chifley Library
- 9 The University's scholarly publishing unit
- 11 The Art & Music Library has a range of these practical music texts
- 12 This 'plus' service lets you borrow books from other university libraries
- 13 This ANU area collects and preserves historical records



Don't fret!!! Answers are on the inside back pages :)



Scholarly Information Services

Word search

Find these words from Scholarly Information Services areas

ANU Archives

The ANU Archives collects and preserves the University's own archives, Pacific and South East Asian Research Archives, the National AIDS Archive Collection and the Noel Butlin Archives Centre business and labour records. These records are available for all ANU students and researchers to use at archives.anu.edu.au

ANU Archives words

- > HOTELS
- > MAPS
- > NOEL BUTLIN
- > PACIFIC
- > PHOTOGRAPHS
- > TRADE UNIONS

ANU Press

ANU Press publishes open access peer-reviewed research publications on a broad range of topics including Asia and Pacific studies, Australian politics, humanities, arts, Indigenous studies and science. All works are available for free download at press.anu.edu.au or can be purchased through a Print-on-Demand service.

ANU Press words

- > BOOKS
- > DOWNLOAD
- > JOURNALS
- > PEER REVIEW
- > PUBLICATIONS
- > TEXTBOOKS

ANU Open Research

The ANU Open Research repository collects, maintains, preserves, promotes and disseminates ANU open access scholarly materials including journal articles; books and book chapters; conference papers, posters and presentations; theses; creative works; photographs and much more at openresearch.anu.edu.au

ANU Open Research words

- > CONTRIBUTE
- > COLLECTIONS
- > OPEN ACCESS
- > RESEARCH
- > REPOSITORY
- > SCHOLARLY

C L E T X L Z C T N N C X J Z
 S Z R Y X R N C Z O F T Q Y T
 T K W E P X J O E H Z S C L A
 L J O U R N A L S D Z S M R B
 R L H O I W B L C W N E G A N
 T C D Z B U A E Y O W C J L M
 U R W X T J W C I V S C E O D
 C V A L P H O T O G R A P H S
 N J I D U V A I S K E N F C G
 Y N T Q E C Q O P T S E B S R
 V R F D I U P N A Y E P T Y K
 Z V O L O A N S M J A O M Z K
 F L B T C W E I V E R R E E P
 Y U E I I Y N C O O C B M E O
 P L F F T S V L R N H N Y G Y
 O I P C D D O S O Q S G W O Z
 C T V M D O Y P V A H V F Y L
 J S K O O B T X E T D V O F C
 P R Z V Q C O N T R I B U T E
 D C H J A M S L E T O H H T U

Crossword answers...

*“When in doubt, go to the library”
— J.K. Rowling*

Across

- 3 Specialist Asia Pacific Library branch
<Menzies>
- 5 Provides a single search for resources across the entire ANU Library collection
<SuperSearch>
- 7 Maximum number of ANU Library items an undergraduate can borrow <fifteen>
- 8 The Law Library collection includes statutes and case law from every Australian
(and selected overseas) _____ <jurisdictions>
- 10 A number of these are held each year to feature ANU Library and Archives
collections <exhibitions>
- 11 These guides offer specific resources for a broad range of disciplines
<subject guides>
- 14 You can borrow these items for two hours <short loan>
- 15 This ANU repository collects and maintains open access scholarly materials
<Open Research>
- 16 These papers can help you study at the end of each semester <past exam>
- 17 These works by ANU students starting from 1953 have been digitised <theses>

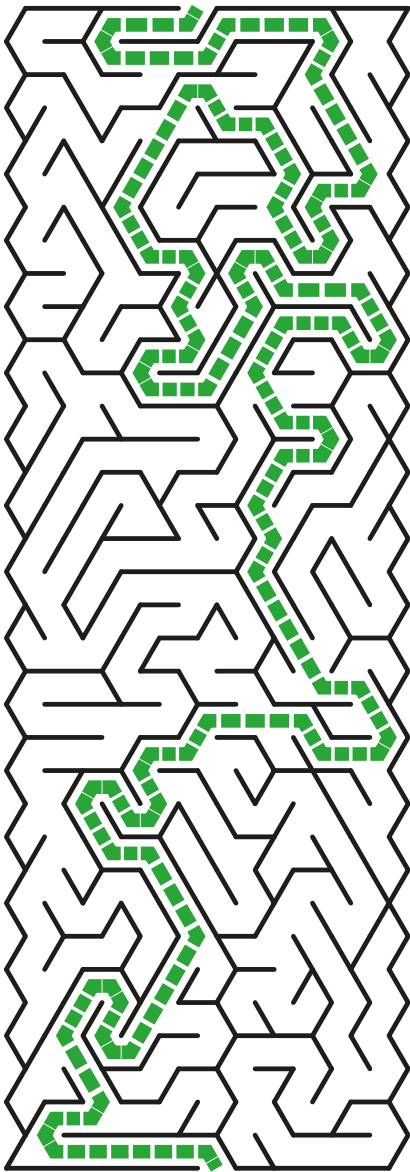
Down

- 1 You can catch the free shuttle to the National Library of Australia from outside this
Library branch <Hancock>
- 2 Book one of these to study with your friends <group study room>
- 4 The social sciences and humanities Library that is open 24/7 <Chifley>
- 6 Recording studio located in the JB Chifley Library <One Button>
- 9 The University’s scholarly publishing unit <ANU Press>
- 11 The Art & Music Library has a range of these practical music texts <scores>
- 12 This ‘plus’ service lets you borrow books from other university libraries <BONUS>
- 13 This ANU area collects and preserves historical records <Archives>

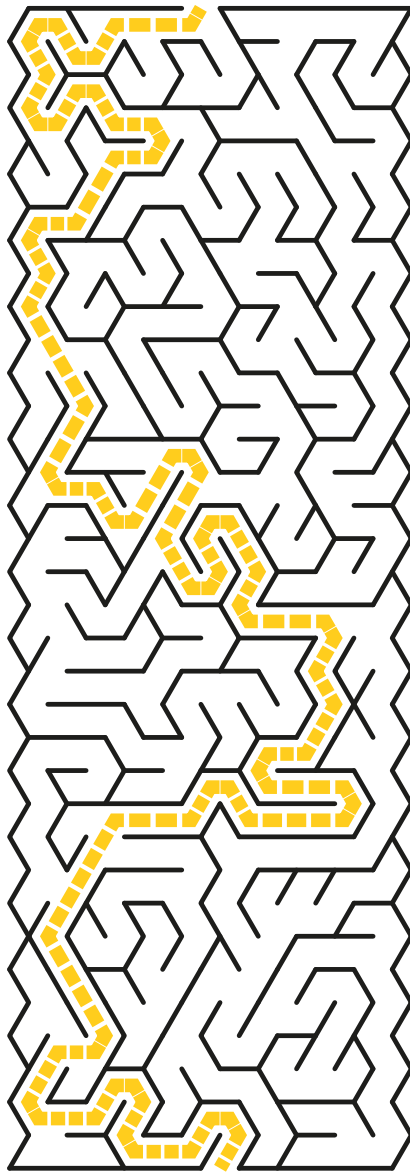
Maze answers...

*"The only thing that you absolutely have to know,
is the location of the library"*

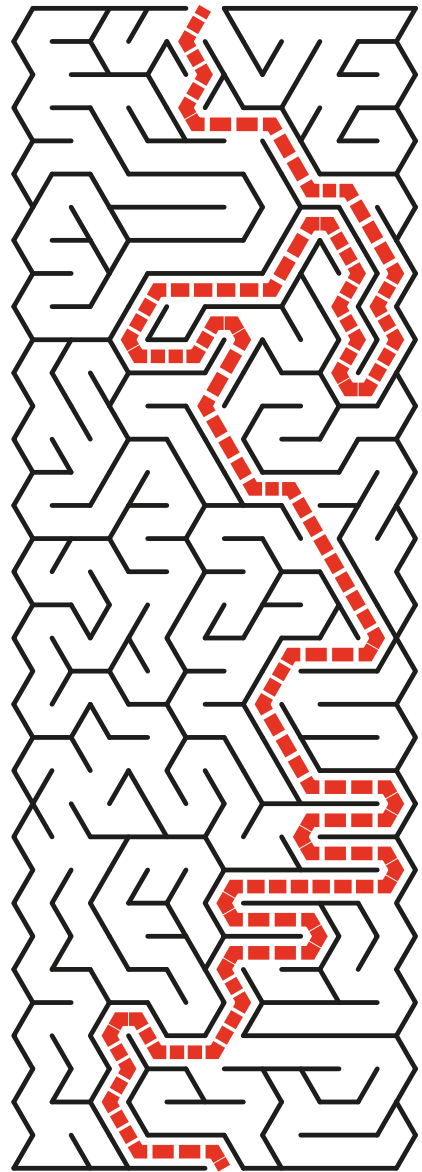
— Albert Einstein



Copyright © 2018 JGB Service, <http://www.mazegenerator.net/>



Copyright © 2018 JGB Service, <http://www.mazegenerator.net/>



Copyright © 2018 JGB Service, <http://www.mazegenerator.net/>



More info



For more information about ANU Library services, spaces and collections visit anulib.anu.edu.au



Stay connected

facebook.com/ANULibrary

twitter.com/ANULibrary

Extra info

archives.anu.edu.au

press.anu.edu.au

openresearch.anu.edu.au