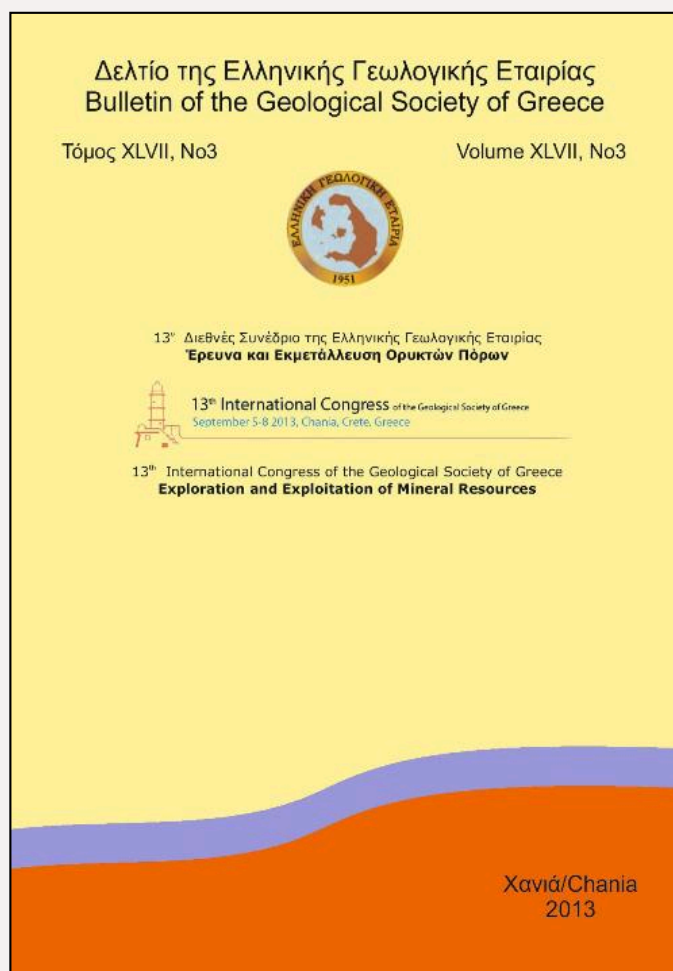


## Bulletin of the Geological Society of Greece

Vol. 47, 2013



### The value of geological data, information and knowledge in producing landslide susceptibility maps.

Tsangaratos P. National Technical University of Athens, School of Mining and Metallurgical Engineering, Department of Geological Studies

Koumantakis I. National Technical University of Athens, School of Mining and Metallurgical Engineering, Department of Geological Studies

<https://doi.org/10.12681/bgsg.10992>

Copyright © 2016 P. Tsangaratos, I. Koumantakis



#### To cite this article:

Tsangaratos, P., & Koumantakis, I. (2013). The value of geological data, information and knowledge in producing landslide susceptibility maps.. *Bulletin of the Geological Society of Greece*, 47(3), 1529-1538.  
doi:<https://doi.org/10.12681/bgsg.10992>

## THE VALUE OF GEOLOGICAL DATA, INFORMATION AND KNOWLEDGE IN PRODUCING LANDSLIDE SUSCEPTIBILITY MAPS

Tsangaratos P.<sup>1</sup> and Koumantakis I.<sup>1</sup>

<sup>1</sup>National Technical University of Athens, School of Mining and Metallurgical Engineering,  
Department of Geological Studies, ptsag@metal.ntua.gr, koumantakisioannis@gmail.com

### Abstract

*The paper attempts to illustrate the value of Geological data, information and knowledge in studies that investigate landslide phenomena and how this is reflected in the production of landslide susceptibility maps. In particular, the concepts of data, information, knowledge and wisdom are defined and also the process of converting data into information and information into knowledge. The presented study continues with a summary that introduces landslide phenomena and the available techniques and methods for identifying and classifying these natural phenomena. It describes the significance of landslide analysis and how this process is essential in order to orient intelligence decisions regarding strategies for regional and urban development. The susceptibility maps that are considered as the outcomes of the over mentioned process, reflects the Geological Knowledge that has been produced by involving expert knowledge and processing data.*

**Key words:** Landslide assessments, data processing, expert knowledge.

### Περίληψη

*Στο άρθρο αυτό επιχειρείται να δοθεί μια συνοπτική παρουσίαση της αξίας που έχει η διαχείριση της γεωλογικής πληροφορίας σε μελέτες διερεύνησης κατολισθητικών φαινομένων και του τρόπου με τον οποίο αυτή αποτυπώνεται σε χάρτες κατολισθητικής επιδεκτικότητας. Συγκεκριμένα, ορίζονται οι έννοιες, δεδομένα, πληροφορία, γνώση, και παρουσιάζεται η διαδικασία μετατροπής των δεδομένων σε πληροφορία και της πληροφορίας σε γνώση, ενώ επιχειρείται και μια συνοπτική περιγραφή των κατολισθητικών φαινομένων και των τεχνικών που διαχειρίζονται τα δεδομένα και τις προκύπτουσες πληροφορίες.*

**Λέξεις κλειδιά:** Κατολισθητικά φαινόμενα, διαχείριση δεδομένων, γνώση ειδικών.

### 1. The Concept of Data, Information, Knowledge and Wisdom

The concepts of data, information, knowledge and wisdom, which can be found in the process of Knowledge Discovery, are concepts mentioned in the research field of Information Science. Many definitions have been presented for these four concepts. The existence of different definitions is due to the different background of the researcher and their specific objectives that they analyze (Zins, 2007). One of the first reports on the hierarchical structure that these concepts follow and the potential link between them was made by Zeleny (1987) and Ackoff (1989) (Figure 1). According to Zeleny (1987) and Ackoff (1989), the data are non - organized or not - processed

events, associated with objects identified in the real world. They are considered as measurable values of variables and parameters that describe objects or events, characterized as "static" since, after being recorded, they do not change. To convert Data into Information requires a frame of reference and a conceptual model that allows their interpretation. Information is a set of Data that has undergone some form of processing and formatting. Unlike "static" data, information has meaning, purpose and relevance. Data are converted into Information mainly by following five (5) basic procedures (Davenport & Prusak, 1998):

- By placing them within a conceptual frame of reference, determined by the reason and the purpose for which the collection of data is done.
- By managing data in a more compact format, eliminating thus unnecessary details.
- By analyzing data, probabilistic or statistical data analysis.
- By categorizing or classifying data in specific classes or categories.
- By processing data.

Knowledge is referred as the Information that has undergone specific validation process. Knowledge is actually based on Information that has been organized, synthesized or summarized in order to increase understanding and awareness. Knowledge highlights the importance of Information and links Information with actionable conclusions (Benet & Benet, 2004). The usual questions about Data and Information are related to *who*, *what*, *where* and *when*, while questions referring to Knowledge are related mainly to the *how* and *why*.



**Figure 1 - Hierarchical structure of data, information, knowledge and wisdom.**

To reach the required wisdom reasoning is needed. Reasoning is the process by which we use existing knowledge in order to make inferences an integral component of the process that we call intelligence. It is the attempt to identify the consistency between two or more judgments, which are appreciated as the logical continuation of these judgments. It is the ability to recognize the truth and make sound judgments based on prior knowledge, experience and insight (Leibowitz, 2003). In particular, Knowledge is in a sense the familiarity which one acquires from an object or a phenomenon, the theoretical and practical understanding.

## **2. The Concept of Geological Data, Information and Knowledge**

In complete correspondence with the foregoing, the Geological Information is the result of processing the primary geomorphological and geotechnical data. Raw data, non - organized associated with the geological environment, geological phenomena, geological and physical processes. Specifically, they could express values of measurable physical and mechanical parameters corresponding to certain geological formations. The collection of primary raw geological data and geological information is undertaken through:

XLVII, No 3 - 1530

- Reviewing the literature, studying geological maps, reports and geotechnical studies, environmental studies, examination of aerial photographs and satellite images, etc.
- Mapping of geological structures, lithological formations, tectonic features and areas of risk.
- Explore through sampling techniques, and performing appropriate field and laboratory tests (to assess the physical and mechanical properties of rocks and soils).
- Geophysical exploration through which one can achieve rapid preliminary identification of subsurface conditions.

The Geological Information is reflected primarily on maps, analogue or digital, adopting characteristics and technical symbols in diagrams and tables. Geological and Geotechnical particular maps are the main means of communication and flow of geological information between different disciplines (van Westen, 2004). The use of Geological Information can solve practical and theoretical issues in geosciences. Issues related to slope stability studies, forecasting geological hazards (Rosenbaum & Culshaw, 2003, Koumantakis et al., 2005), estimation of hydrocarbon reserves or aquifers (Mukerj et al., 2001, Schon, 2004), assessment of the geotechnical behavior the rock mass and soil formations (Tzamos & Sofianos, 2006, 2007, Ilija et al. 2009), assessment of suitability for the construction of underground space for various uses (Benardos & Kaliampakos, 2006, Koumantakis et al., 2007), decision making related to the design of underground infrastructure (Panou & Sofianos, 2002a, 2002b) etc. According to Wood & Curtis (2004), in most cases, the Geological Information is provided as an advance element, a priori component, a key component of the "function" that solves any geo-environmental problems. The use of reliable Geological Information is the key to successful implementation of the solution that is proposed for a given problem. As the authors note, where Geological Information is detailed and accurate, then and only then you can provide rational decisions with respect to critical environmental issues. The importance of the Geological Information and Knowledge in the methods and practice of Engineering Geology can be summarized into three (3) "equations" that are considered the central point of the philosophy of Engineering Geology, as currently configured towards safety and economics in any geotechnical project (Rozos, 1989, Rozos & Tsiambaos, 1991):

- Geological and geotechnical properties of the geological materials + 'mass characteristics' = geotechnical properties of geological 'mass'.
- Geotechnical properties of geological 'mass' + Environmental (climate, etc.) conditions = determining the precise location of the structure.
- Determine the exact location of construction + induced changes in the geological environment of the construction work = final mechanical response.

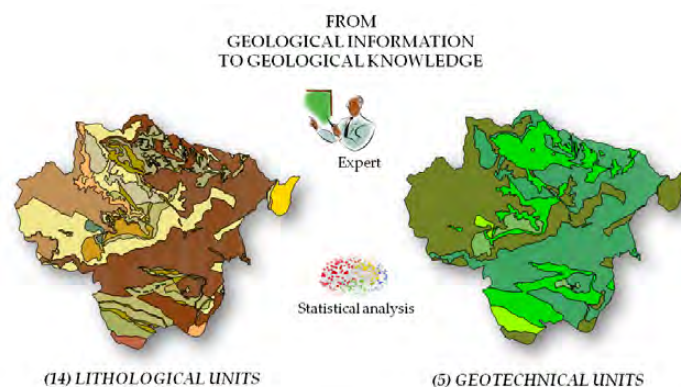
### **2.1. Transforming Geological Data into Geological Information and Knowledge**

According to Wood & Curtis (2004), the transition from Geological Data to Geological Information requires three (3) basic elements:

- Input data managed by experts and specialists.
- The incorporation of uncertainty in the generated Geological Information.
- The Geological Information to be expressed in quantitative terms, whereas when plotted in a qualitative manner it must be fully defined so that the associated uncertainty has been assessed in the final output.

When these three (3) elements are present the quality of information generated increases and the configured information becomes more relevant and meaningful. For the transition of Geological Information in Geological Knowledge it is required to manage the Geological Information within a specific theoretical and mathematical background, whose most important result is the correlation

of information to actionable conclusions. The quality of knowledge generated reflects the understanding of the mechanism that drives the behavior of the environment. Increased quality implies more confident estimation of the response of the environment. The predictive modelling and simulation is designed to capture the knowledge of quantitative and qualitative characteristics, the application of which involves the necessary special checks for verification and certification of Information. Such transformation is shown in figure 2, where the 14 lithological units identified in the field surveys have been classified into 5 geotechnical units with the help of expert knowledge and analysis of laboratory and field tests. This process provides valuable knowledge.



**Figure 2 – Converting Geological Information to Geological Knowledge.**

### 3. Managing Landslide Related Data

#### 3.1. Landslide Phenomena

Landslides are one of the most complex and chaotic natural phenomena. Landslides are considered as unexpected and in most cases unpredictable movement that usually occur on unstable surface layers, making them one of the most frequent natural hazards with significant consequences to human life and incalculable social - economic consequences. According to Hutchinson (1995), landslides are the result of evolution or progressive extreme events that occur on the surface of the earth and due to the action of geological, geomorphological, climatic processes and also the negative impact of human activities.

#### 3.2. Data Related to Landslide Phenomena

The process of identifying the causative factors and the related data is the basis of many methods of instability assessment. As for the nature of the data that one must investigate, they can be distinguished as dynamic (e.g. pore - water pressure), or passive (e.g. rock structure) and may also be considered in terms of the roles they perform in destabilising a slope (Crozier, 1986). In this sense, the factors from which data and information are collected could be recognised as pre-conditioning factors (e.g. slope steepness), preparatory factors (e.g. deforestation) and triggering factors (e.g. seismic shaking). The selection of the appropriate factors depends on the objective of the study and the complexity of the research area, the type of mass movement and the availability of existing data. It also depends by the analysis and method contacted. Morphological factors such as geometry (steepness, height, length, form, angle, and aspect) and basin / sub basin characteristics (order, magnitude, channel gradient) reflect the past and present geomorphological evolution of an area and provide fundamental data and information on landslide process. The acquisition of geological factors, such as rock composition, texture, structure, degree of weathering, fracture density / foliation attitude and stratigraphic settings is still not facilitated by the application of the GIS technologies but rely mainly on the traditional procedure of field

surveys and aerial photo – interpretation. These kinds of data are essential in any instability assessment. Table 1 gives a schematic overview of the main data layers that are required for a landslide susceptibility, hazard and risk assessment and also provides information about the importance of the data set for heuristic models, statistical models, physically-based models and probabilistic models (van Westen et al., 2008).

**Table 1 – Data layers related to landslide phenomena (van Westen et al., 2008).**

Data		Models			
Main type	Data layer	Heuristic	Statistical	Physical based	Probabilistic
<b>Landslide inventory</b>	Landslide inventory	Critical	High important	High important	High important
	Landslide activity	High important	Critical	Critical	Critical
	Landslide monitoring	Not relevant	Not relevant	High important	High important
<b>Environmental factors</b>	DEM	High important	Critical	Critical	Critical
	Slope geometry	High important	High important	High important	High important
	Slope hydrology	Not relevant	Not relevant	Critical	High important
	Lithology	High important	High important	High important	High important
	Geological structure	High important	High important	High important	High important
	Faults	High important	High important	Not relevant	Not relevant
	Soil type	Not relevant	Not relevant	Critical	High important
	Soil depth	Not relevant	Not relevant	Critical	High important
	Land use	High important	High important	High important	High important
<b>Triggering factors</b>	Rainfall	High important	High important	Critical	Critical
	Temperature/ evatranspiration	Not relevant	Not relevant	High important	Less important
	Earthquake data	-	-	-	Critical
	Ground acceleration	High important	High important	High important	Less important

### 3.3. Transforming Data Related to Landslide Phenomena into Information

The theoretical framework, through which one attempts to analyze the phenomenon of landslides, is formed by adopting some assumptions and specifications that summarize the knowledge of experts (Radbruch-Hall and Varnes, 1976, Varnes et al., 1984, Carrara et al., 1999, Hutchinson and Chandler, 1991, Hutchinson, 1995, Dikau et al., 1996, Turner and Schuster, 1996, Cruden and Varnes, 1996, Aleotti and Chowdhury, 1999, Guzzetti et al., 1999, Guzzetti et al., 2005):

- Landslide leave distinct mark on the surface of the earth, most of which can be identified, classified and mapped by field work or the analysis of stereoscopic aerial photographs.

- The morphological profile of a slope failure depends on the type and the rate of movement. In general, similar types of geological failures produce similar morphological profiles. By the presence of a geological failure, an expert can extract qualitative and quantitative information on the degree of activity, age and extent of geological failure.
- Slope failure does not occur randomly. It is the result of the interaction of natural processes that is a subject to mechanical and physical laws that can be determined empirically or statistically. The knowledge generated during the examination of the slope failures can be generalized.
- Slope failures of the past and present are evidence to predict future failures.

Therefore, the theoretical background and the mathematical model which are involved in the interpretation of the phenomenon of landslides are based on the following three (3) critical assumptions (Varnes et al., 1984, Hutchinson, 1995, Guzzetti et al., 1999, Chanon et al., 2006):

- Areas that in the past have a history on instability problems show great potential to failure.
- These areas, share common geotechnical characteristics.
- Similar conditions produce similar patterns of failures.

Within this conceptual frame of reference, data related to landslide phenomena could be analyzed, categorized or classified and transformed into valuable Information.

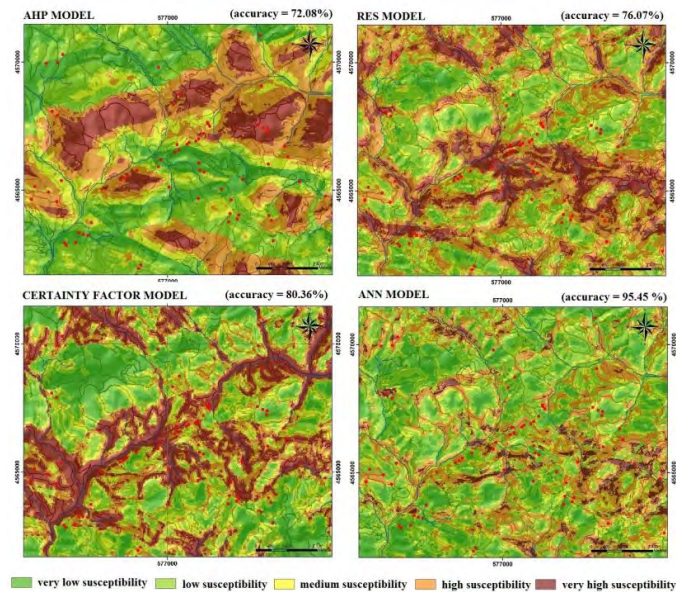
#### **3.4. Transforming Information to Knowledge by Applying Methods of Analysis**

Knowledge related to landslide phenomena is based on Information that has been organized, synthesized or summarized by applying specific methods of analyzes. These methods produce outputs of certain format that increase our understanding and awareness regarding with landslide phenomena. A variety of methods, qualitative or quantitative, direct or indirect are implement in order to rank slope – instability factors and assign different susceptibility and hazard levels to a region that is going to be analyzed (Carrara, 1989, van Westen et al., 2006). These methods embody expert-based analyses or complex mathematical-based systems. Particular, geomorphologic analyses and direct field mapping methods are considered qualitative methods since they don't provide numeric output with reference to landslide assessment. On the other hand, quantitative methods such as deterministic analyses, probabilistic approaches, statistical methods and data mining techniques, rely on mathematical models and produce numeric outputs that contain high value information (Glade et al., 2005, Tsangaratos et al., 2011).

Determining the spatial and temporal extent of landslide hazard requires to identifying areas which are, or could be, affected by a landslide and to assess the probability of such landslide occurrence within a specified period of time. To specify a precise time frame for the future occurrence of a landslide can be difficult. As a result, landslide hazard has often been represented by landslide susceptibility, where only the predisposing and preparatory landslide causes are described. Susceptibility zoning could be thought as a process that provides the spatial distribution and rating of the terrain units according to their propensity to produce landslides. It refers to the process that provides highly valued Knowledge that depends on the topography, geology, geotechnical properties, climate, vegetation and anthropogenic factors (Fell et al., 2008). The value of a landslide susceptibility map refers to its information and data content. The content of information depends mainly on the type of data shown, their quality and the extent to which the information is new and essential. According to Guzzetti et al. (2000), a landslide susceptibility map is valuable when the information and data shown are useful to the user and also when the map is both relevant and fully understood by the user. In more detail, reliable susceptibility maps could provide an explanation for the observed landslide spatial distribution pattern; provide in other words Knowledge of the instability state of the surroundings. In addition, by incorporating information on the instability factors that are known or supposed to control landslide spatial occurrence and



their underlying relationship, susceptibility maps are capable of predicting the location of landslides even in the areas where landslides were not recognized or mapped providing in a sense *Wisdom*.



**Figure 3 – Four different methods of analyzing landslide phenomena and producing highly valued Knowledge.**

The four models that are shown in Figure 3 produce different landslide susceptibility maps and provide different level of Knowledge. The examples refer to an area that exhibits instability problems located in the prefecture of Xanthi, Greece (Tsangaratos, 2012). The level of Knowledge is clearly associated with the performance, indicated by the accuracy index. The first two models, Analytic Hierarchy Process (AHP) and Rock Engineering System (RES) are methods that embody expert-based analyses. They perform well concerning the predictive accuracy and the associated level of Knowledge they provide is of medium to high level. The level of Knowledge is determined by the fact that there is often an overestimation of the influence that certain factors have on the landslide susceptibility index and also by the fact that the mechanism of landsliding may not be fully understood. The Certainty Factor (CF) model performs better and provides additional information and knowledge about the underlying relationship that the landslide related factors have. The Artificial Neural Network model (ANN mode) has a higher performance and although it does not provide any additional information about how or why this happens it provides valuable Knowledge of where it will happen.

Table 2 shows the calculated weight of coefficient of the factors used in the four models for the same research area. The weights represent the significance each factor has during the estimation of landslide susceptibility. It is obvious that all models identify the lithological feature as the most significant despite the different approach they require during the estimation of the susceptibility.

The expert-based method, AHP seems to overestimate the influence of the lithological factor. However, the RES method gives a lower value to the lithological factor and may be closer expressing the actual significance. If one evaluates the influence of the geological boundaries the overall influence of the geological features reaches the same level of significance (0.2932) as



estimated by the AHP method. The nature of the other two models allows a more objective way to estimate the weight coefficients and the estimated level of significance may be more accurate.

**Table 2 – Weight coefficient indicating the significance of each factor.**

Factors	AHP model	RES model	CF model	ANN model
Lithological units	0.3422	0.1466	0.3142	0.2876
Elevation	0.0585	0.0681	0.0865	0.0975
Slope inclination	0.1181	0.1361	0.0899	0.1124
Slope orientation	0.0252	0.1047	0.0978	0.1021
Fault characteristics	0.1700	0.1257	0.0760	0.0490
Hydrological characteristics	0.0921	0.1361	0.0888	0.1011
Geological Boundaries	0.0921	0.1466	0.0990	0.0980
Infrastructure network	0.1038	0.1361	0.1478	0.1523

#### 4. Discussion and Conclusion

To spatially identify landslide phenomena the process involves analyzes of a large set of interrelated data layers, often ill - known, unknown or in most cases unmappable. Landslide susceptibility is a function of the degree of the inherent stability of the slope as can be indicated by the factor-of-safety along with the presence of causative factors capable of reducing the excess strength and ultimately triggering movement. As illustrated in the present study, it is essential to produce landslide susceptibility maps, since they provide an explanation for the observed landslide spatial distribution pattern and the interrelationship between the factors that control instability. To extract Knowledge from any landslide susceptibility, hazard or risk assessment, it is necessary to develop a conceptual frame of reference that will enable the transformation of data, related to landslide phenomena, into information. A conceptual frame that is based on the belief that past and present provides evidence for the future, that failures do not occur randomly, that failures share common geotechnical characteristics and that similar conditions produce similar patterns of failures. The level of Knowledge that susceptibility maps provide is analogous to their usefulness and relevance and how well the explanation that they provide concerning the mechanism of instability is understood by the user. Each factor contributes to the overall susceptibility by a different level of significance, expressed with a weighted coefficient that is estimated through specific procedures according to different models. The provided Knowledge should be also accompanied by information of when a landslide will occur, and how large or destructive the mass movement is expected to be. This information is transformed from data that concern triggering factors and when analyzed produce landslide hazard and risk maps that provide a higher level of Knowledge. When landslide susceptibility maps predict successfully the location of landslides in areas where landslides were not yet recognized or mapped they provide in a sense Wisdom. In conclusion the landslide susceptibility maps provide to engineering geology experts a cost and time effective mean for tracing the most critical slope site with inherent instability potential. They may also serve as a valuable tool in decision-making, regarding the land use and development planning processes in landslide susceptibility areas.

#### 5. References

Ackoff R. 1989. From Data to Wisdom, *Journal of Applied Systems Analysis*, vol.16, 3–9.

- Aleotti P. and Chowdhury R. 1999. Landslide hazard assessment: Summary review and new perspectives, *Bulletin of Engineering Geology and the Environment*, 58(1), 21-44.
- Benardos A.G. and Kaliampakos D.C. 2006. Design of an Underground Hazardous waste repository in Greece, *Tunneling and Underground Space Technology*, vol.21, 185-196.
- Benet A. and Benet D. 2004. *Organizational survival in the new world*, Butterworth-Heinemann, US, 391 pp..
- Carrara A. 1989. Landslide hazard mapping by statistical methods: a “black-box” model approach, *Proceedings International Workshop on Natural Disasters in European-Mediterranean Countries*, Perugia, June 27-July 1, 1988, CNR-ESNSF, pp. 205–224.
- Carrara A., Guzzetti F., Cardinali M. and Reichenbach P. 1999. Use of GIS Technology in the Prediction and Monitoring of Landslide Hazard, *Natural Hazards*, vol. 20 (2-3), 117-135.
- Chacon J., Irigaray C., Fernandez T. and El Hamdouni R. 2006. Engineering geology maps: Landslides and geographical information systems, *Bulletin of Engineering Geology and the Environment*, 65(4), 341-411.
- Crozier M.J. 1986. *Landslides - Causes, Consequences and Environment*, Croom Helm, London, pp. 252.
- Cruden D.M. and Varnes D. J. 1996. Landslide types and processes, In: Turner A.K.; Shuster R.L. (eds) *Landslides: Investigation and Mitigation*, Transp Res Board, Spec Rep 247, 36–75.
- Davenport T.H. and Prusack L. 1998. *Working Knowledge: How Organizations Manage What They Know*. Boston: Harvard Business School Press, pp. 5.
- Dikau R., Brunsden D., Sshrott L. and Ibsen M. 1996. *Landslide Recognition. Identification, Movement and Causes*, Wiley & Sons, Chichester, pp. 274.
- Fell R., Corominas J., Bonnard C., Cascini L., Leroi E. and Savage W.Z. 2008. Guidelines for landslide susceptibility, hazard and risk zoning for land use planning, *Engineering Geology*, 102 (3-4), pp. 85-98.
- Glade T., Anderson M. and Crozier M.J. 2005. *Landslide Hazard and Risk*, John Wiley & Sons, Ltd., Chichester, England, pp.802.
- Guzzetti F., Carrarra A., Cardinali M. and Reichenbach P. 1999. Landslide hazard evaluation: a review of current techniques and their application in a multiscale study, Central Italy. *Geomorphology*, 31, pp. 181–216.
- Guzzetti F., Cardinali M., Reichenbach P. and Carrara A. 2000. Comparing landslide maps: A case study in the upper Tiber River Basin, central Italy, *Environmental Management*, 25/3, 247-363.
- Guzzetti F., Reichenbach P., Cardinali M., Galli, M. and Ardizzone F. 2005. Probabilistic landslide hazard assessment at the basin scale, *Geomorphology*, 72 (1-4), 272-299.
- Hutchinson J.N. and Chandler M. P. 1991. A preliminary landslide hazard zonation of the undercliff of the Isle of Wight, in *Slope stability engineering, development and applications. Proc. Int. Conf. On Slope stability*, Isle of Wight, 15-18 April (Ed. R. J. Chandler), Thomas Telford, 197-206.
- Hutchinson J.N. 1995. Keynote paper: Landslide hazard assessment, *Proceedings 6th International Symposium on Landslides*, Christchurch. Balkema, Rotterdam, 1805-1841.
- Ilija I., Rozos D., Perraki Th. and Tsangaratos P. 2009. Geotechnical and mineralogical properties of weak rocks from central Greece, *Cent. Eur. J. Geosci.*, 1(4), 431-442, DOI: 10.2478/v10085-009-0029-0.
- Koumantakis I., Rozos D., Markantonis K. and Tsagaratos P. 2005. Engineering geological conditions, related ground failures and proposed measures, along the part of Peloponnesian railway line, Greece, *Proceedings of Intern. Symposium Geoline 2005*, BRGM (Abstracts in Proc., papers in CD-ROM), Lyon France 2005.
- Koumantakis I., Rozos D. and Tsagaratos P. 2007. Underground space development in Attica County in relation with its geological structure, *11<sup>th</sup> ACUUS International Conference “Underground space: Expanding the Frontiers”*. V1, 221-229, Athens, Greece.
- Leibowitz J. 2003. *The Knowledge Management Handbook*, CRC Press LLC, pp. 328.

- Mukerj T., Jorstad A., Avseth P., Mavco G. and Granli J. R. 2001. Mapping lithofacies and pore-fluid probabilities in a North Sea reservoir: seismic inversions and statistical rock physics, *Geophysics*, vol. 66, 988-999.
- Panou K. and Sofianos A.I. 2002(a). A fuzzy multicriteria evaluation system for the assessment of tunnels vis a vis surface roads: theoretical aspects - Part I, *Tunnelling and Underground Space Technology*, 17, 195-207.
- Panou K. and Sofianos A.I. 2002(b). A fuzzy multicriteria evaluation system for the assessment of tunnels vis a vis surface roads: the WPMA case - part II, *Tunnelling and Underground Space Technology*, 17, 209-219.
- Radbruch-Hall D.H, Varnes D.J. and Savgé W.Z. 1976. Gravitational speeding of steep-sided ridges ("sacking") in Western United States, *Bull. Int. Assoc. Eng. Geol.*, 14 (1976), 23-35.
- Rosenbaum M. S. and Culshaw M. G. 2003. Communicating the risks arising from geohazards, *Journal of the Royal Statistical Society' Series A (Statistics in Society)*, 166, 261 -288.
- Rozos D. 1989. Engineering geological conditions in Achaia province. Geomechanical characteristics of the plio-pleistocene sediments (in Greek), *PhD Thesis*, Dept. of Geology, Univ. of Patras, 453pp.
- Rozos D. and Tsiambaos G. 1991. Field and laboratory engineering geological investigations and their importance for engineering purposes, *Special publications of the Geological Society of Greece*, (GSG) 2day Symposium for the 40 years of GSG, Athens, Greece.
- Schon J. H. 2004. Physical Properties of Rocks': Fundamentals' and Principles of Petrophysics, Pergamon Press. Handbook of Geophysical Exploration: Seismic Exploration Series, p. 18.
- Tsangaratos P., Iliá I. and Rozos D. 2011. Case Event System for landslide susceptibility analysis, *The Second World Landslide Forum Abstracts, WLF2 - 2011- 0389*, Rome, p. 10.
- Tsangaratos P. 2012. Research on the engineering geological behaviour of the geological formations by the use of information systems, *PhD Thesis*, School of Mining Engineering Geology, Department of Geological Section, NTUA, Athens, pp. 363.
- Tzamos A. and Sofianos A.I. 2007. A correlation of four rock mass classification systems through their fabric indices, *International Journal of Rock Mech. & Mining Sciences*, 44, 477-495.
- Turner A.K., and Schuster R. L. 1996. Landslides-Investigation and mitigation: National Research Council, *Transportation Research Board Special Report*, 247, National Academy Press, Washington, D.C., 673 p.
- Van Westen C.J. 2004. Geo-information tools for landslide risk assessment: an overview of recent developments, *In proceedings of the 9th International Symposium on Landslides*, London: Balkema, 36-59.
- Van Westen C.J., Asch T.W.J. and Soeters R. 2006. Landslide hazard and risk zonation-why is it still so difficult?, *Bull. Eng. Geol. Env.*, vol.65, 65-184.
- Van Westen C.J., Castellanos E. and Kuriakose S.L. 2008. Spatial data for landslide susceptibility, hazard, and vulnerability assessment: An overview, *Engineering Geology*, doi:10.1016/j.enggeo.2008.03.010.
- Varnes D.J. and IAEG Commission on Landslides and Other Mass-Movements, 1984. Landslide Hazard Zonation: A Review of Principles and Practice, UNESCO Press, Paris.
- Wood R. and Curtis A. 2004. Geological prior information and its applications to geoscientific problems, *Geological Society, London, Special Publications*, vol. 239, 1-14.
- Zeleny M. 1987. Management Support Systems: Towards Integrated Knowledge Management, *Human Systems Management*, 7 (1), 59-70.
- Zins C. 2007. Conceptual Approaches for Defining Data, Information, and Knowledge, *Journal of the American Society for Information Science and Technology*, 58 (4), 479-493.