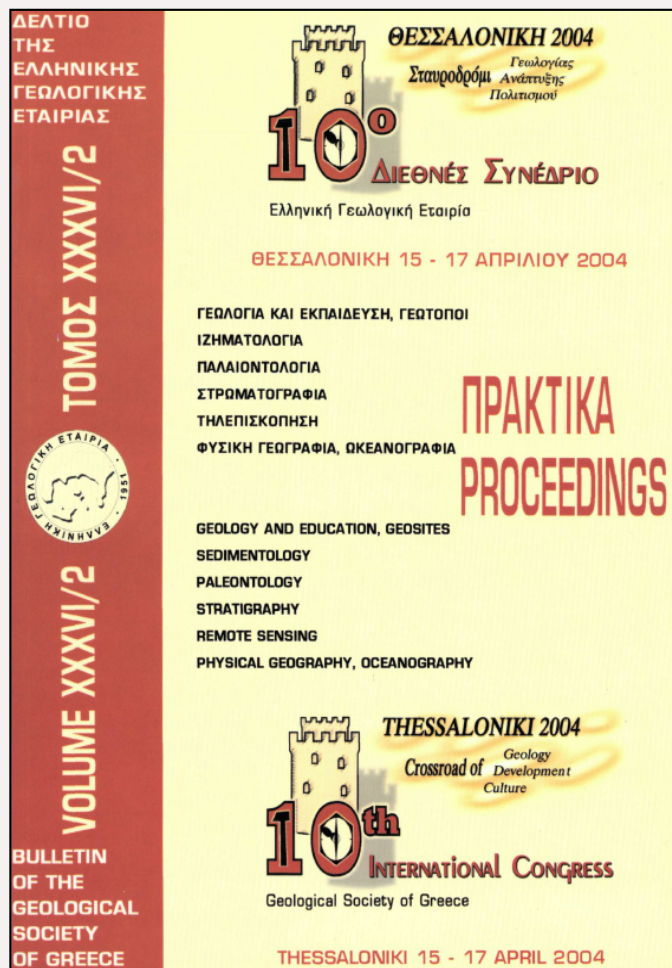


Bulletin of the Geological Society of Greece

Vol. 36, 2004



LOFTUSIA CF. ANATOLICA HORIZON IN UPPER MAASTRICHTIAN LIMESTONES OF THE EASTERN GREECE PLATFORM (MOUNT PTOON, BOEOTIA, GREECE): PALAEOBIOGEOGRAPHICAL REMARKS

Zambetakis - Lekkas A. National and Kapodistrian University of Athens, Faculty of Geology, Dep. of Historical Geology and Paleontology
 Kemeridou A. National and Kapodistrian University of Athens, Faculty of Geology, Dep. of Historical Geology and Paleontology

<https://doi.org/10.12681/bgsg.16818>

Copyright © 2018 A. Zambetakis - Lekkas, A.
 Kemeridou



To cite this article:

Zambetakis - Lekkas, A., & Kemeridou, A. (2018). LOFTUSIA CF. ANATOLICA HORIZON IN UPPER MAASTRICHTIAN LIMESTONES OF THE EASTERN GREECE PLATFORM (MOUNT PTOON, BOEOTIA, GREECE): PALAEOBIOGEOGRAPHICAL REMARKS. *Bulletin of the Geological Society of Greece*, 36(2), 792-799.
 doi:<https://doi.org/10.12681/bgsg.16818>



LOFTUSIA CF. ANATOLICA HORIZON IN UPPER MAASTRICHTIAN LIMESTONES OF THE EASTERN GREECE PLATFORM (MOUNT PTOON, BOEOTIA, GREECE): PALAEOBIOGEOGRAPHICAL REMARKS

Zambetakis – Lekkas A. and Kemeridou A.

National and Kapodistriean University of Athens, Faculty of Geology, Dep. of Historical Geology and Paleontology, Panepistmioupoli Zografou, 15784 Athens. E-mail: zambetaki@geol.uoa.gr

ABSTRACT

Researches on upper Cretaceous limestones from the Eastern Greece platform in the area between Kokkinon and Akrefnion (Boeotia, Greece) revealed the presence of a horizon rich in *Loftusia* cf. *anatolica* (foraminifer). In this horizon, of late Maastrichtian age, *L. cf. anatolica* is associated with debris of Rudists, *Orbitoides media*, *O. apiculata*, *O. gensacicus*, *Siderolites calcitrapoides*, *Omphalocyclus macroporus*, *Hellenocyclina beotica*, Miliolidae, Dasycladaceae and echinoderms. It is found in an undisturbed sequence of limestones, where both the underlying and the overlying horizons are of the same facies and contain debris of Rudists, *Hellenocyclina beotica*, *Orbitoides media*, *Siderolites calcitrapoides*, *Sulcoperculina* sp., Rotaliidae, Mélobesiées, *Nummofallotia* sp., echinoderms. *L. cf. anatolica* is confined in the above mentioned horizon and it is found neither in the underlying nor in the overlying beds. This facies reflects an outer shelf environment in front of the rudist reefs.

It is the first time that this species is reported in situ in Greece in an undisturbed stratigraphic sequence of upper Cretaceous limestones up to Paleocene flysch.

KEY WORDS: *Loftusia* cf. *anatolica*, Maastrichtian, paleobiogeography, Eastern Greece platform, Boeotia, Greece.

1 INTRODUCTION

Loftusia is a benthic foraminifer of Maastrichtian, known from outer platform facies of the Tethys Ocean. The genus is abundant in arabo-iranian platforms, rare in eastern Mediterranean and totally absent in western Mediterranean (Fig. 7).

In Greece it has so far been reported from two sites:

- On Kassidiaris mount (MK in Fig.7) as debris in bioclastic upper Cretaceous limestones of the internal zones (Ferrière, 1982),

- On mounts Valtou (Gavrovo zone, MV in Fig.7) in an occasionally bioclastic conglomerate which is limited by faults that prohibit us from observing its relation with the surrounding formations (Fleury *et al.*, 1990).

In the area of Boeotia, on mount Ptoon (Fig. 1), a horizon rich in *Loftusia* cf. *anatolica* has been found (MP in Fig. 7) in an undisturbed sequence of upper Cretaceous limestones up to Paleocene flysch of the Eastern Greece zone. This recovery is considered very important for the paleogeography of the Tethys Ocean during late Cretaceous.

2 STRATIGRAPHIC DESCRIPTION

This section was realized along the road that from Kokkinon (Boeotia) leads to Akraifnion. More specifically it begins at the point where the road "Megali Rachi" is being constructed, 2 km before Akraifnion (Fig. 1).



Fig. 1 Location of the study area.

From bottom to top we observed the following formations (Fig.2):

A: 20 m of gray, medium bedded to massive limestones, grainstone-rudstone with debris of Rudists (Fig.3a).

B: 3 m of light gray massive limestones, floatstone with *Orbitoides tissoti* (Fig.3b), *Orbitoides media*, *Lepidorbitoides* sp., *Siderolites calcitrapoides* (Fig.3b), *Sulcoperculina* sp. *Goupillaudina* sp., *Rotaliidae*, *Mélobesiées* and echinoderms. At the upper part only abundant shells of Rudists are observed.

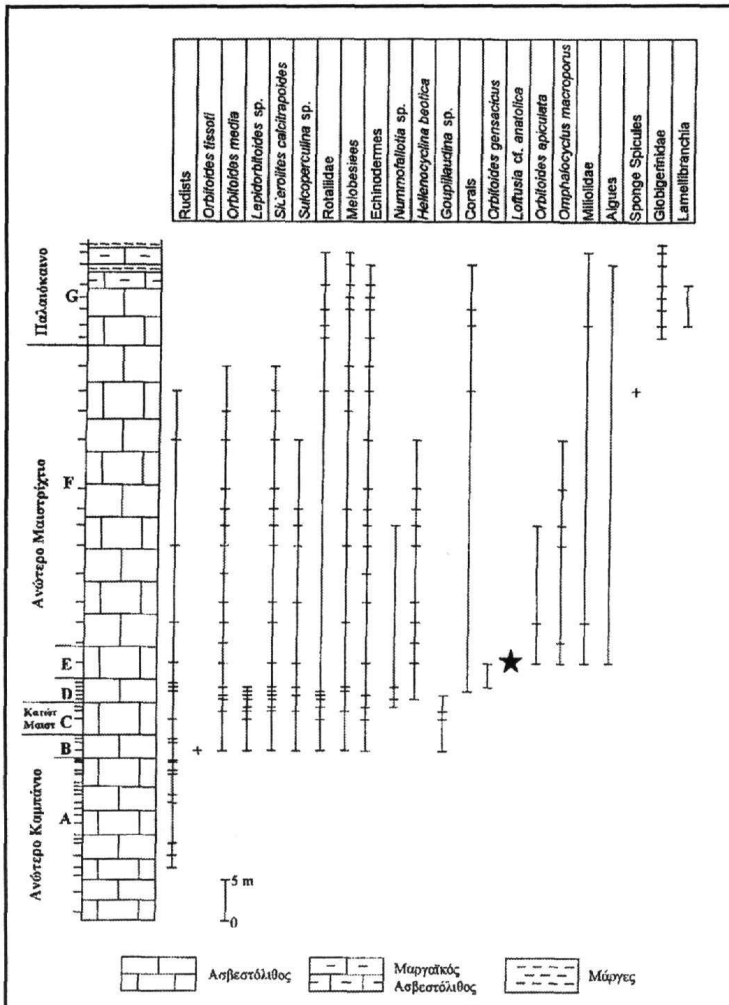


Fig. 2. Stratigraphic column.

C: 4 m of light gray massive limestones, packstone-grainstone, with debris of Rudists, *Orbitoides media*, *Lepidorbitoides* sp., *Siderolites calcitrapoides* (Fig.3c), *Sulcoperculina* sp., *Nummfalotia* sp., *Goupillaudina* sp., Rotaliidae, Mélobesiées and echinoderms.

D: 3 m of light gray massive limestones, packstone-floatstone to grainstone, with debris and shells of Rudists, *Hellenocyclus beotica*, *Orbitoides media*, *Orbitoides gensacicus* (Fig.3d), *Lepidorbitoides* sp., *Siderolites calcitrapoides*, *Sulcoperculina* sp., *Nummfalotia* sp. (Fig. 3d), *Goupillaudina* sp., Rotaliidae, Mélobesiées, echinoderms and corals.

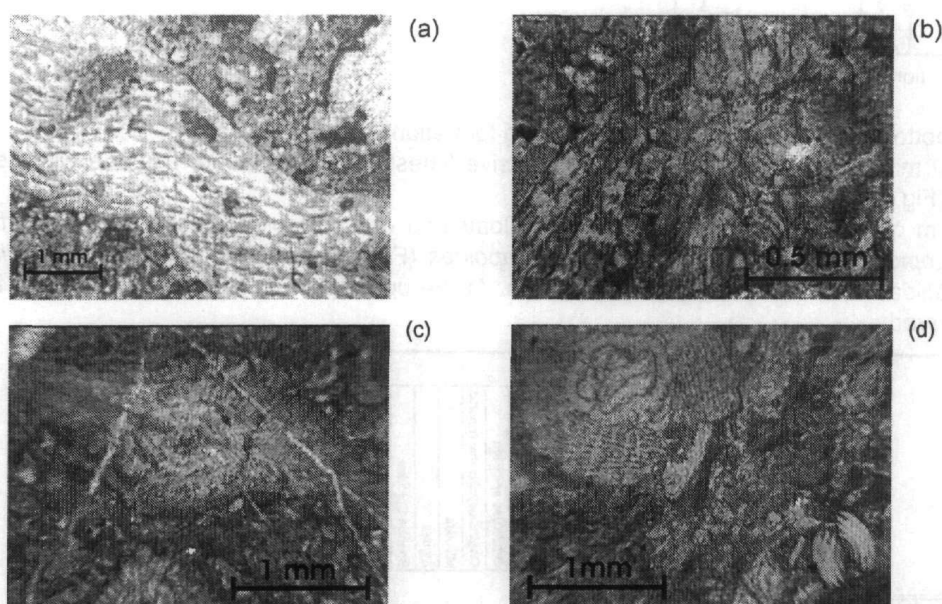


Fig. 3. (a) Rudist debris. (b) *Orbitoides tissoti*, *Siderolites calcitrapoides*. (c) *Siderolites calcitrapoides*. (d) *Orbitoides gensacicus*, *Nummfalotia* sp.

E: 4 m of light gray, thickly bedded limestones, floatstone, with debris of Rudists, *Loftusia* cf. *anatolica* (Fig. 4a, b), *Orbitoides media* (Fig. 4b), *Orbitoides apiculata* (Fig. 4b), *Orbitoides gensacicus*, *Siderolites calcitrapoides*, *Omphalocyclus macroporus* (Fig. 5a), *Hellenocyclus beotica*, *Sulcoperculina* sp., Miliolidae, echinoderms and algae.

F: 37 m of light gray, thickly bedded limestones, packstone-grainstone, with debris of Rudists, *Hellenocyclus beotica* (Fig. 5b), *Orbitoides media*, *Siderolites calcitrapoides*, *Orbitoides apiculata*, *Omphalocyclus macroporus*, *Sulcoperculina* sp., *Nummfalotia* sp., Mélobesiées, Rotaliidae, Miliolidae, echinoderms and corals.

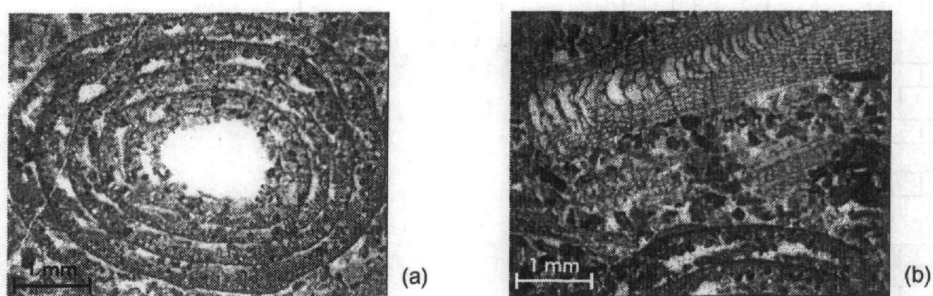


Fig. 4. (a) *Loftusia* cf. *anatolica*. (b) *Loftusia* cf. *anatolica*, *Orbitoides media*, *Orbitoides apiculata*, *Omphalocyclus macroporus*.

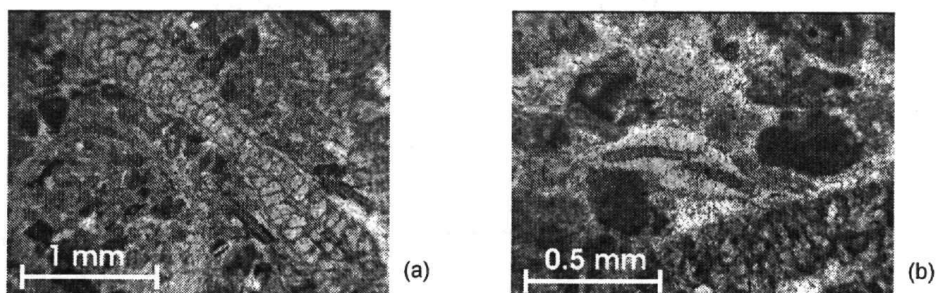


Fig.5. (a) *Omphalocyclus macroporus*, (b) *Hellenocyclina beotica*.

G: 13 m, of light gray, thickly bedded limestones, packstone-wackestone, with Globigerinidae (Fig. 6a), Rotaliidae, Mélobésiées (Fig. 6b), spicules and large shells of echinoderms (Fig. 6b), Miliolidae, corals, algae and debris of Lamellibranches. In the upper part, thin bedded marly limestones and marls are followed by flysch sedimentation.

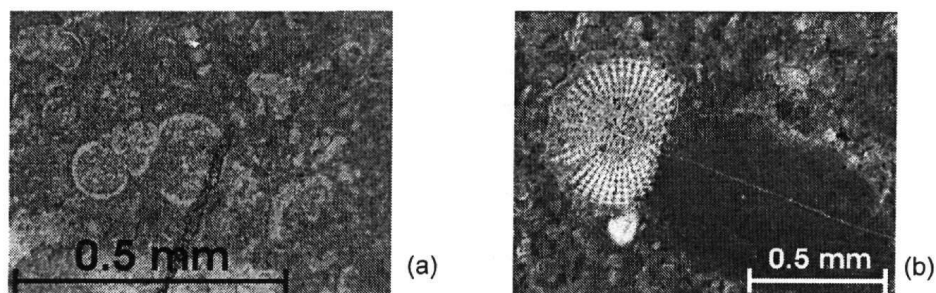


Fig. 6. (a) Globigerinidae, (b) Mélobésiées, spicule of echinoderm.

We observe that *Loftusia* appears in relative abundance in a thin horizon (approximately 4 m) of late Maastrichtian age (association with *Hellenocyclina beotica*) and it is found neither in the underlying nor in the overlying beds. That could explain the rarity of the references of the genus.

In the study area the facies that contain *Loftusia* reflect an environment in the outer platform. The vicinity to the rudist reefs is indicated by the abundant debris and entire shells of Rudists in the horizon that underlies the one with *Loftusia*. This environment is in agreement with what is reported in the international literature concerning the biotope of the genus *Loftusia*.

3 MICROPALAEONTOLOGICAL REMARKS

Order: Foraminiferida EICHWALD 1830

Suborder: Textulariina DELAGE & HEROUARD 1896

Superfamily: Loftusiacea BRADY 1884

Family: Loftusiidae BRADY 1884

Genus: *Loftusia* BRADY (in Carpenter & Brady 1870)

Type species: *Loftusia persica* BRADY (in Carpenter & Brady 1870)

Loftusia BRADY 1870 is a benthic planispiral foraminifera. It has a fusiform, ovoid, globose or nautiloid test. The wall of the spire is perforate, calcareous and alveolar with an arenaceous endoskeleton. It is tightly coiled with regular whorls whose thickness increases gradually from center to periphery. Primary, longitudinal, oblique septa divide the whorls into chambers with labyrinthic, endoskeletal structure. The last is composed of radially set pillars. Transverse secondary or partial septa may be formed from the fusion of pillars. Across the primary septa and arranged in transverse rows there are numerous apertures.

The determination of the species so far described is primarily based on size. Thus small, medium and large size species are distinguished (Brady, 1869 in Carpenter & Brady, 1870; Douvillé, 1904; Cox, 1937; Grubic, 1958; Meric 1965a, b, 1967, 1979; Al Omari & Sadek, 1976, El Asa'ad, 1989, Meric & Avsar, 1992).

Cox (1937) studied the *Loftusia* from Persia providing a historical review on the genus in detail. Furthermore based on measurements of their external dimensions e.g. maximum diameter, L/D ratio, he made up a table of the different species of the genus.

Loftusia anatolica MERIC 1965 was defined as a medium sized species with rounded poles. The measurements of the size and internal structures of *L. anatolica* and the other species of the genus as well as of our specimens are shown in Table 1. The specimens observed in our samples are megalospheric. The test is fusiform with alveolar structure and it has rounded poles.

Tab.1. Measurements on species of *Loftusia* (after Henson, 1948; Meric, 1965, 1979; Inan, 1988; El-Asa'ad, 1989). Measurements on specimens of *L. cf. anatolica* determined in Ptoon are included.

Species of <i>Loftusia</i>	N° of tours	Length (mm)	Diameter (mm)	Height of 1 st tour (mm)	Height of last tour (mm)	Diam. of embr. chamber (mm)	N° of septa of 1 st tour	N° of septa of last tour
<i>anatolica</i>	6-7	16.1-22 max-ave-min	4.7-6.1 Max-ave-min	0.2-0.4	0.3-0.4	0.9-1.4	8-11	8-22
<i>arabica</i>	10	58-33.9-16.5	6-3.9-2.1	-	-	-	-	-
<i>baykali</i>	2-3	2.3-4.2	1.6-2.4	0.3	0.2-0.3	0.4-0.8	6-7	9-10
<i>coxi</i>	3	max: 6.1 max-ave-min	Max: 3.3 max-ave-min	-	0.55	0.33-0.4	-	12-13
<i>elongata</i>	18	118-55.5-12	33-12.3-5.6	-	-	-	-	-
<i>ketini</i>								
(forme A)	1.5-2.5	1.8-5.3	1.4-2.5	0.35-0.39	0.31-0.39	0.5-1.0	4-5	9-10
(forme B)	8-10	23.9-41.8	5.2-10.7	0.43-0.78	0.43-0.67	-	4-5	23-25
<i>minor</i>								
(forme A)	6-7	2.75-7.5	2.30-4.32	0.14-0.2	0.16-0.38	-	-	-
(forme B)	2-2.5	1.5-1.7 max-ave-min	1.52-1.8 max-ave-min	~0.3	0.22-0.24	0.2-0.8	-	-
<i>morgani</i>	16	44.5-27-6	8-5.8-3	-	-	-	-	-
<i>L. cf. anatolica</i> in Ptoon	5-7	8.56	3.2-4.04	0.2 – 0.36	0.28-0.4	0.84-2		

Thus according to the measurements, our specimens are included in the group of medium-sized species of *Loftusia*. Based on previous data we conclude that the species with which our specimens present the greatest resemblance is *Loftusia anatolica* MERIC 1965. It is a species of medium size and it has been described only from megalospheric forms. The measurements in our specimens present small deviations from the typical *L. anatolica*, mainly in the total length, which was measured in only one specimen, and the diameter. Both were found smaller while the diameter of the embryonic chamber appears bigger. The observed deviations could not lead us to the identification of a new species due to lack of a sufficient number of specimens.

Al-Omari & Sadek (1976) investigated microscopically and statistically specimens of *Loftusia* from the Maastrichtian of Northern Iraq (Aqra Formation). They noticed that during this period the genus exhibited a gradual increase in size (length and diameter). Thus, they recognized an evolutionary line for the development of *Loftusia* considering the forms recorded from Cox (1937) as the early stages of the genus' development. In addition they recorded a tendency for tighter forms during the transition from Mid to Late Maastrichtian.

Meriç *et al.* (2001) studied the palaeogeographical distribution of the species of *Loftusia* on the Gondwanian and Laurasian platforms during the Maastrichtian based on the plate tectonic reconstructions of Sengör & Yilmaz (1981). The authors identified three main *Loftusia* groups according

to previous data on their dimensions: small, medium and large. Meriç *et al.* (2001) also noted that *Loftusiids* show dimorphism with most of the *Loftusia* species having been identified from either megalospheric (A) or microspheric (B) (only few) forms. Both (A) and (B) forms are seen in only a few species.

4 PALEOECOLOGICAL AND PALEOGEOGRAPHICAL REMARKS

The genus *Loftusia* is already known since the 19th century. It is abundant in arabo-iranian platforms, rare in eastern Mediterranean and totally absent in western Mediterranean (fig. 7). It is reported from:

-Iran: Brady, 1869 in Carpenter & Brady, 1870; Douvillé, 1904; Cox, 1937 (ZA); Bozorgnia, 1964 (ZA); Sampo, 1969 (ZA).

-Iraq: Henson, 1948, 1950 (IN); Al Omari & Sadek, 1976 (IN); Schroeder & Darmoian, 1977 (IN); Al Naqib, 1967 (IN).

-Oman: Kuhn, 1929; Philip & Platel, 1987; Babinot & Bourdillon de Grissac, 1989.

-Saudi Arabia: Powers, 1968 (AS).

-Dinarides: Milovanovich, 1935, 1938, Serbia; Grubic, 1958, 1962 Serbia; Drobne & Hottinger, 1971 (SO); Chorowicz, 1977 (PK); Radoicic, 1980.

-Apennines: Molinary & Tilia, 1976; Chiocchini *et al.*, 1976; Chiocchini & Mancinelli, 1977 (ML); Carbone & Sirna, 1981 (ML).

-Taurides and Pontides: Meric, 1965 (TO); Meric & Mojab, 1977; Poisson, 1977 (NL); Meric, 1991.

-Syria: Sadek, 1979 (SY) and

-Hellenides: Ferriere, 1982 (MK); Fleury *et al.*, 1990 (MV) and present paper (MP).

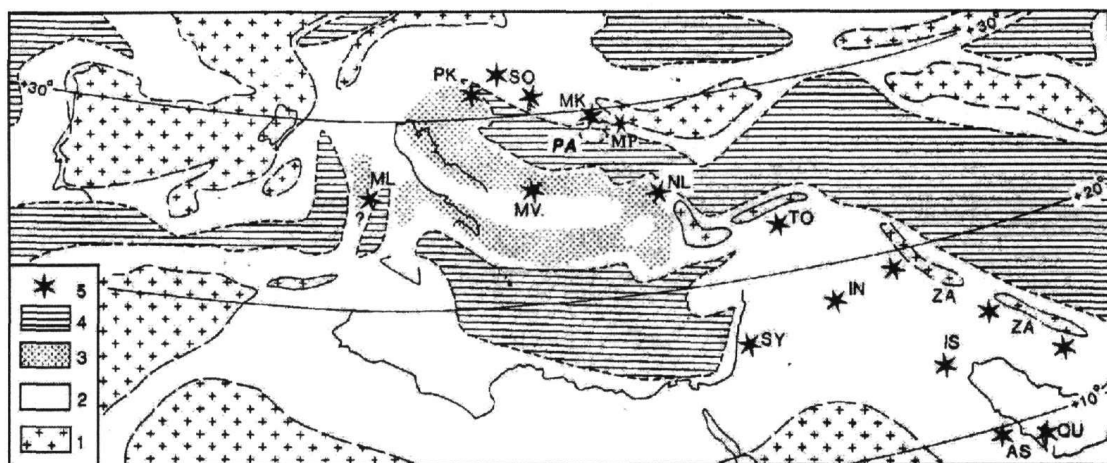


Fig. 7. Palinspastic distribution of the occurrences of the genus *Loftusia*. The pairs of letters correspond to the localities mentioned in the text (PA: Mount Parnassus, Greece) (from Fleury *et al.* 1990, modified).

1: land areas, 2: shelf and slope, 3: Adriatic-Aegean carbonate platforms, 4: deep water basins, 5: *Loftusia* occurrences.

In the majority of the sites, *Loftusia* is either transported (Chorowicz, 1977; Poisson, 1977; Ferriere, 1982) or the beds that enclose it are not in stratigraphic continuity with the underlying and the overlying formations. Thus:

On mounts Valtou (Gavrovo zone) (Fleury *et al.*, 1990) *Loftusia* is found in a conglomerate which comes in contact, by faults, with limestones probably of Cenomanian age, as well as with Paleocene breccias with Madrepores. The *Loftusia* shells are included in a grainstone-rudstone facies along with debris of Rudists, *Orbitoides* sp. (large size, up to 16 mm), *Lepidorbitoides* sp. and other

benthic foraminifers. The depositional environment at the margin of the platform, during Campanian-Maastrichtian is the contribution of this recovery on mounts Valtou.

Meric (1965a) found abundant specimens of *Loftusia* in eastern Turkey, among which he determined *L. anatolica* n.sp., in conglomeratic limestones of Maastrichtian age. The *Loftusia* shells usually constitute elements of the conglomerate therefore can be considered as transported. The Lutetian unconformably overlies the Maastrichtian beds.

Al Omari & Sadek (1976) studied the evolution of the *Loftusia* species in a Maastrichtian sequence in northern Iraq. Nevertheless they do not provide information concerning its stratigraphic relation with the surrounding formations.

Henson (1950) notes that in the Aqra formation in northern Iraq, the compact reefal rudistic limestones pass into shallow facies of the reefal margin with *Loftusia*, *Omphalocyclus*, *Orbitoides*.

In Boeotia, the *Loftusia* are found in a calcareous Upper Maastrichtian horizon in a stratigraphic sequence of upper Campanian up to Paleocene age. The *Loftusia* horizon overlies a horizon with abundant Rudist shells and is associated with *Orbitoides media*, *Orbitoides apiculata*, *Siderolites calcitrapoides*, *Omphalocyclus macroporus*, *Hellenocyclina beotica*, *Sulcoperculina* sp., Miliolidae and echinoderms. The same fossils, but without the *Loftusia*, are also found in the overlying horizon, along with abundant large shells of echinoderms. This facies reflects an outer shelf environment in front of the rudist reefs of the Maastrichtian.

5 CONCLUSIONS

Loftusia cf. *anatolica* horizon of late Maastrichtian age is for the first time found in Greece in a continuous undisturbed sequence of upper Cretaceous limestones up to Paleocene flysch in Eastern Greece platform in Boeotia. Associated with debris of Rudists, *Orbitoides media*, *O. apiculata*, *O. gensacicus*, *Siderolites calcitrapoides*, *Omphalocyclus macroporus*, *Hellenocyclina beotica*, Miliolidae, Dasycladaceae and echinoderms it reflects an outer shelf environment in front of rudist reef.

REFERENCES

- Al Naqib, K.M. 1967. Geology of the Arabian Peninsula, southwestern Iraq. *Geol. Surv. Prof. Paper* 560 G., U.S. Gov. Print. Off., Washington.
- Al Omari, F. and Sadek, A. 1976. *Loftusia* from northern Iraq. *Rev. Esp. Micropal.*, Madrid, 8, 1, pp. 57-67.
- Babinot, J.F. and Bourdillon-de-Grissac, C. 1989. Associations d' Ostracodes de l' Albien-Maastrichtien du Dhofar (Oman). Affinités paléobiogéographiques et implications géodynamiques. *Bull. Soc. Géol. Fr.*, Paris (8), V, 2, pp. 287-294.
- Bozorgnia, F. and Benafati, S. 1964. Microfacies and microorganisms of Paleozoic through Tertiary sediments of some parts of Iran. 16 pp., 108 pls (National Iranian Oil Company, Tehran).
- Carbone, F. and Sirna, G. 1981. Upper Cretaceous reef models from Rocca di Cave and adjacent areas in Latium, central Italy. In: TOOMEY D.F. Ed., European fossil reef models. *Soc. Econ. Paleontol. Mineral. spec. publ.*, Tulsa, 30, pp. 427-445.
- Carpenter W.B. and Brady, H.B. 1870. Description of Parkeria and Loftusia, two gigantic types of arenaceous foraminifera. *Roy. Soc. London, Phil. Trans., London, England*, vol. 159, p. 739-751.
- Chiocchini, M. and Mancinelli, A. 1977. Microbiostratigrafia del Mesozoico in facies di piattaforma carbonatica dei Monti Aurunci (Lazio meridionale). *Studi geol. Camerti*, Camerino, III, (1977), pp. 109-152.
- Chiocchini, M., Molinari, V. and Tilia, A. 1976. Aperçu sur la biostratigraphie des sédiments carbonatés de plate-forme du Latium centre-méridional (Italie). Première partie: Crétacé. *VII Colloque Africain de Micropaléontologie*, Ile-Ife, Nigeria, pp. 16-28.
- Chorowicz, J. 1977. Etude géologique des Dinarides le long de la structure transversale Split-Karlovac (Yougoslavie). *Soc. Géol. Nord Publ.*, Lille, 1,331 p., Thèse Sci., Paris, 1977.
- Cox, P. 1937. The genus *Loftusia* in southwestern Iran. *Eclogae Geologicae Helvetiae*, 30, 431-450.
- Douvillé, H. 1904. Les explorations de M de Morgan, en Perse. *Bulletin de la Société Géologique de France* 4, 539-553.
- Drobne, K. and Hottinger, L. 1971. Broeckinella und Saudia aus dem Nordwestlichen Teil Jugoslawiens. *Razprave Slov. akad. znam. umet.*, Ljubljana, class. 4, XIV, 7, pp. 215-238.
- El-Asa'ad, G.M. 1989. *Loftusia arabica* sp. nov. (Foraminiferida) from the Maastrichtian of central Saudi Arabia. *J. Micropaleontol.*, 8(1), p. 49-54.

- Ferrière, J. 1982. Paléogéographies et tectoniques superposées dans les Hellenides internes : les massifs de l'Othrys et du Pélion (Grèce continentale). *Soc. géol. Nord Publ.*, Lille, 8, 970 p., Thèse Sci., Lille, 1982.
- Fleury, J.J., Mavrikas, G. and Baudin, F. 1990. Paléobiogéographie du genre *Loftusia*, foraminifère du Crétacé terminal de la Téthys. *Bull. Soc. Géol. France*, (8), t. VI, n° 3, pp. 487-495.
- Grubic, A. 1958. O rodu *Loftusia* Brady (le genre *Loftusia* Brady). *Bulletin du Service de Géologie et Géophysique, République de Serbie* 16, 45-55.
- Grubic, A. 1962. *Loftusia morgani* Douvillé 1904 aus dem Cerevic-Bach (Fruska Gora, Yugoslavien). *University of Beograd, Transactions of the Mining and Geological Faculties*, pp. 41-50.
- Henson, F.R.S. 1948. Larger imperforate foraminifera of south-western Asia. Families Lituolidae, Orbitolinidae and Mendrosipinidae, British Museum (Natural History), London.
- Henson, F.R.S. 1950. Cretaceous and Tertiary reef formations and associated sediments in Middle East. *Am. Ass. Petrol. Geol. Bull.*, Tulsa, 34, 2, pp. 215-238.
- Inan, N. 1988. Sur la présence de *Smoutina cruysi* DROOGER dans le Maastrichtien supérieur de Sivas (Est de la Turquie). *Rev. de Paléob.*, vol. 7, n° 2, pp. 467-475, Genève.
- Kuhn, O. 1969. Beitrage zur Paläontologie und Stratigraphie von Oman (Ost-Arabien). *Annale Naturhistorische Museum Wien* 43, 13-33.
- Meriç, E. 1965a. Sur deux espèces de *Loftusia* et un nouveau genre, *Asterosomalina*. *Rev. Micropal.*, vol. 8, n° 1, pp. 45-52.
- Meriç, E. 1965b. Etude géologique et paléontologique de la région entre Kahta et Memrut dag. *Rev. Fac. Sci. Univ. Ist.*, série B, t. 30, n° 1-2, pp. 55-107, pl. 1-20.
- Meriç, E. 1967. Sur quelques Loftusiidae et Orbitoididae de la Turquie. *Rev. Fac. Sci. Univ. Ist.*, série B, t. 32, n° 1-2, pp. 1-58, pl. 1-36.
- Meriç, E. 1979. *Loftusia ketini* (Foraminifère) nouvelle espèce du Maestrichtian. *Revista Española de Micropaleontología* 11, pp. 509-516.
- Meriç, E. 1991. On the presence of *Loftusia anatolica* Meriç in the Maastrichtian sequence of Rava S. Maria (Monts Lepini, Latium Centrale-Meridionale, Italy). *Bulletin of the Technical University, Istanbul* 44, 97-102.
- Meriç, E., and Avşar, N. 1992. *Loftusia turcica* Meriç and Avşar n. sp. from the Maastrichtian of eastern Turkey (southeast Elazığ). *Micropaleontology* 38, pp. 303-309.
- Meriç, E., Ersoy S., and Görmüş M. 2001. Palaeogeographical distribution of the species of *Loftusia* (Foraminiferida) in the Tethyan Ocean during the Maastrichtian (Late Cretaceous). *Cretaceous Research*, 22, 353-364.
- Meriç, E. and Mojab, F. 1977. World-wide geographical distribution of the species of the foraminiferal genus *Loftusia*. *Istanbul Universitesi, Fen Fakültesi Dergisi, Seri B* 42, 143-155.
- Milovanovich, B. 1935. *Loftusia morgani* Douvillé du Maastrichtian de la Serbie Orientale. *Annals Géologiques de la Peninsule Balkanique, Beograd* 12, 246-252.
- Milovanovich, B. 1938. Sloveji sa Loftusia i problem postjanja marinskog eocena v Zapadnoj Srbije. *Vesnik Geologij Instituta, Beograd* 6, 121-134.
- Molinari, P.V. and Tilia, Z.A. 1976. Niveau à *Rhapydionina liburnica* (Stache) dans la succession Sénonienne des Montes Lepini (Latium Centre-Méridional). *VII Colloque African de Micropaléontologie, Ile-Ife, Nigeria, 16-28 Mars, 1976*.
- Philip, J. and Platel, J.P. 1987. Sur la présence du genre *Torreites* (rudiste de la Province Caraïbe) dans le Campanien du Dhofar (sud de l'Oman) : conséquences sur l'évolution paléobiogéographique du Pacifique et de l'océan Indien au Crétacé. *C. R. Acad. Sci.*, Paris, 304, II, 12, pp. 679-684.
- Poisson, A. 1977. Recherches géologiques dans les Taurides occidentales (Turquie), 795 p. Thèse Paris-Sud (Orsay).
- Powers, R.W. 1968. Lexique stratigraphique international, vol. III (Asie), fasc. 10b 1 : Arabie Saudite. CNRS, Paris.
- Radoicic, R. 1980. Micropaleontological aspect of Stira Limestone (Gucevo Region). GLAS CCCXVIII, *Acad. serbe Sciences et Arts. Class Sc. Nat. et math.*, Zagreb, 46, pp. 95-109.
- Sadek, A. 1979. The Campanian-Maastrichtian sediments in East Mediterranean and parts of North Africa. *VI Coll. geol. Aegean Region, Athènes, (1977)*, II, pp. 827-834.
- Sampo, M. 1969. Microfacies and microfossils of the Zagros area, southwestern Iran (from pre-Permian to Miocene), 207 pp. (International Sedimentary Petrographical Series, Leiden 12).
- Schroeder, R. and Darmonoian, S.A. 1977. *Gyroconulina columellifera* n.gen. n.sp., a complex ataxophragmiid Foraminifer from the Aqra Limestone (Maastrichtian) of northern Iraq. *Boll. Soc. Paleont. Ital.*, Bologne, 16, 1, pp. 117-123.
- Sengör, A. and Yilmaz, Y. 1981. Tethyan evolution of Turkey: a plate tectonic approach. *Tectonophysics*, vol. 75, p. 181-241.