

## SUPPLEMENTARY INFORMATION

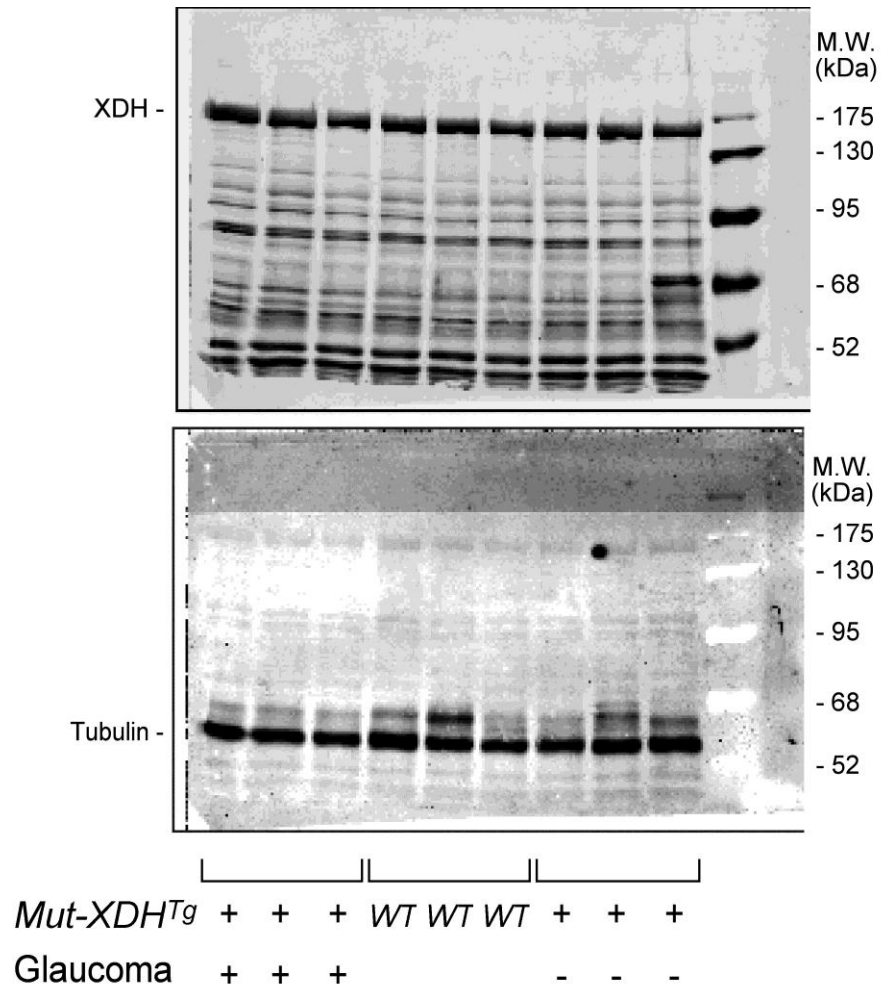
**Title:** Generation of a new mouse model of glaucoma characterized by reduced expression of the AP-2 $\beta$  and AP-2 $\delta$  proteins

Maria Monica Barzago<sup>1</sup>, Mami Kurosaki<sup>1</sup>, Maddalena Fratelli<sup>1</sup>, Marco Bolis<sup>1</sup>, Chiara Giudice<sup>2</sup>, Laura Nordio<sup>2</sup>, Elisa Cerri<sup>3</sup>, Luciano Domenici<sup>3,4</sup>, Mineko Terao<sup>1</sup> and Enrico Garattini<sup>1</sup>

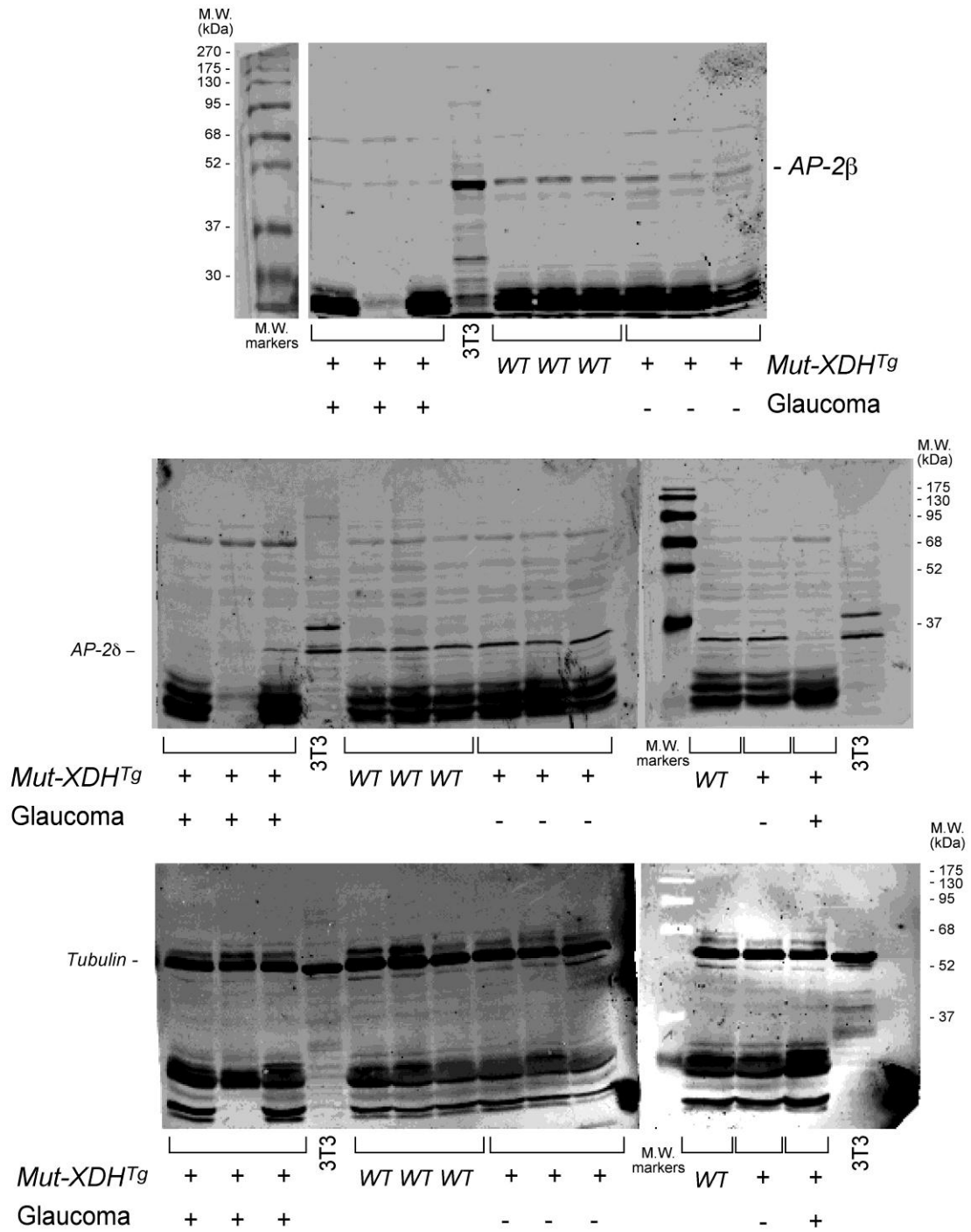
<sup>1</sup> Laboratory of Molecular Biology, IRCCS-Istituto di Ricerche Farmacologiche “Mario Negri”, via La Masa 19, 20156, Milano, Italy.

<sup>2</sup> DIVET, Faculty of Veterinary Medicine, University of Milan, Italy. Via Celoria 10, 20113 Milano, Italy

SUPPLEMENTARY FIGURES



**Fig. S1** Full-length blots/gels of Figure 4



**Fig. S2** Full-length blots/gels of Figure 6