



CrossMark

Pituitary adenoma and the chemokine network: a systemic view

Fabio Grizzi^{1*}, Elena Monica Borroni², Alessandro Vacchini², Dorina Qehajaj¹, Manuela Liguori¹, Sanja Stifter³, Maurizio Chiriva-Internati⁴ and Antonio Di Ieva^{5,6}

¹ Department of Inflammation and Immunology, Humanitas Clinical and Research Center, Milan, Italy, ² Department of Medical Biotechnologies and Translational Medicine, University of Milan, Milan, Italy, ³ Department of Pathology, University of Rijeka, Rijeka, Croatia, ⁴ Division of Hematology and Oncology, Texas Tech University Health Sciences Center, Lubbock, TX, USA, ⁵ Department of Neurosurgery, Australian School of Advanced Medicine, Macquarie University Hospital, Sydney, NSW, Australia, ⁶ Garvan Institute of Medical Research, Sydney, NSW, Australia

Keywords: pituitary gland, adenoma, chemokines, systems biology, hormones

OPEN ACCESS

Edited by:

Dominic M. Desiderio,
University of Tennessee Health
Science Center, USA

Reviewed by:

Tullio Florio,
Università degli Studi di Genova, Italy
Xianquan Zhan,
Central South University, China

*Correspondence:

Fabio Grizzi
fabio.grizzi@humanitasresearch.it

Specialty section:

This article was submitted to Pituitary
Endocrinology, a section of the journal
Frontiers in Endocrinology

Received: 03 July 2015

Accepted: 28 August 2015

Published: 11 September 2015

Citation:

Grizzi F, Borroni EM, Vacchini A,
Qehajaj D, Liguori M, Stifter S,
Chiriva-Internati M and Di Ieva A
(2015) Pituitary adenoma and the
chemokine network: a systemic view.
Front. Endocrinol. 6:141.
doi: 10.3389/fendo.2015.00141

Pituitary adenomas (PAs) are adeno-hypophysial neoplasms, representing ~10–15% of all intracranial tumors, which are found to occur in almost 20% of the general population (1, 2). Although recognized as benign lesions, 20–45% of PAs are invasive and some exhibit clinically aggressive behavior (1, 3). Advancements have allowed the pathological classification of PAs from a histochemical classification (i.e., acidophilic, basophilic, and chromophobic PAs) to an immunohistochemical-based one, which essentially recognizes PAs as lactotrophic, somatotrophic, corticotrophic, gonadotrophic, thyrotrophic, and null cell adenomas (4). Electron microscopy has identified additional subtypes, based on the appearance of specific morphology/arrangement of ubiquitous cytoplasmic constituents (5). It is now accepted that the hypothalamic–anterior pituitary axis integrates a set of stimulatory and inhibitory central and peripheral signals to synthesize and secrete hormones by highly differentiated cell types, namely somatotrophs, gonadotrophs, lactotrophs, thyrotrophs, and corticotrophs. Each of these cell types expresses unique G protein-coupled receptors (GPCRs), which are specific for hypothalamic releasing and inhibiting hormones. These peptides traverse the vascular system that connects the hypothalamus with the anterior pituitary gland and impinge upon the pituitary cells to regulate the synthesis and secretion of anterior pituitary hormones (6). It has been demonstrated that PAs arise from any of these cells as monoclonal neoplasms (7). The functional classification of PAs has also been facilitated by the measurement of circulating trophic and target hormone concentrations (6). Several hallmarks of PAs (i.e., benign nature, slow growth) point to a unique growth behavior distinct from that of other endocrine and non-endocrine malignancies (8). The general failure to proceed to true malignancy with demonstrable extra-cranial metastases remains an intriguing feature not completely investigated yet (8). Atypical and/or aggressive PAs can share some histological features with carcinomas, including atypical morphologic appearances, elevated mitotic index (i.e., Ki-67 labeling index >3%), or extensive nuclear staining for p53 (9). Nonetheless, the endocrine signs due to hormonal hypersecretion or pituitary deficit, pituitary abnormal growth, or invasion represent a greater clinical and therapeutic challenge (8). The subset of PAs with clinically aggressive behavior should be promptly identified, as patients with such tumors might require closer clinical, biochemical, and imaging surveillance or multimodal therapeutic treatments. Despite the paramount importance of identifying specific criteria for tumor aggressiveness, no clinical signs, biochemical biomarkers, or imaging techniques have been universally accepted and no reliable histological biomarker or classification system for characterizing pituitary aggressive neoplasms are available today (10). It has also been suggested that the histological features of “typical” and “atypical” PAs as defined by the World Health Organization (WHO) do not entirely correlate with clinical outcome. In particular, some typical PAs have an aggressive behavior while many atypical PAs lack an aggressive clinical dynamics (1, 7). Additionally, the lack of standardization of the terminology in the literature remains a source of confusion (i.e., the terms “aggressive” and “invasive” are often used synonymously).

Although the molecular pathogenesis of PAs is still unclear, it is now accepted that PAs onset is related to proto-oncogene mutations, overexpression of activating genes, or loss of tumor suppressor genes (11). The “initiating” events cause a proliferative “gain of function” in single pituitary cells, subsequently induced to clonal expansion by tumor-promoting molecules. Recently, several studies have shown the pivotal role of “epigenetic modifications” (11, 12), microRNA (miRNAs), and long non-coding RNAs (lncRNAs) in the pathogenesis of PAs (13–17). Other promoting factors, including hypothalamic hormones, locally produced growth factors (i.e., EGF, β FGF, NGF, and TGF), cytokines [interleukin (IL)-1, IL-2, and IL-6], and chemokines have been shown to influence pituitary tumor progression (18, 19).

Chemokines represent a category of inflammatory mediators with a prominent role in leukocyte migration and angiogenesis, exerted through the activation of dedicated seven-transmembrane domain receptors, known as GPCRs (20, 21). Beyond conventional chemokine receptors, which directly induce cell migration through Gi-mediated signaling events, a set of atypical chemokine receptors (ACKRs) with no Gi-mediated signaling activity and devoid of chemotactic activity have been described (22). Recent data indicate that ACKRs fulfill their biological functions by contributing to generate and maintain functional chemokine patterns in tissues by means of different biochemical properties, including removal, transport, or concentration of their cognate ligands (23). Deregulated expression of chemokines and their receptors is involved in the development of many human diseases, including autoimmune and chronic inflammatory diseases, immunodeficiency, and cancer (24). In the adult central nervous system (CNS), chemokines and their receptors are involved in developmental, physiological processes and nervous system disorders, including neuroinflammatory and neurodegenerative diseases, HIV-associated neuropathology, and brain tumors (25–27). In particular, the C–X–C chemokine receptor type 4 (CXCR4) and its ligand stromal cell-derived factor 1 [SDF1, also known as C–X–C motif chemokine 12 (CXCL12)] are expressed by neuronal, astroglial, and microglial cells in the adult brain and play a critical role in supporting cell growth and survival, and directing cell migration during embryonic brain development (28–31). Moreover, the CXCL12/CXCR4 axis has been found in malignant tumors, including meningiomas, gliomas, where it crucially affects tumor progression by controlling cancer cell survival, proliferation, and migration, and, indirectly, regulating angiogenesis and vasculogenesis or recruiting fibroblasts, endothelial, mesenchymal, and immune cells in tumor microenvironment (32, 33). Regulation of CXCL12 is unique in that it may control its own expression levels and fine tune its biological functions by means of its binding to the ACKR CXCR7/ACKR3 in addition to CXCR4, which has been reported to regulate angiogenesis in different human tumors through its own signaling activity (34). ACKR3 has been found simultaneously expressed with CXCL12 and CXCR4 in a cohort of brain metastases (35). Therefore, the CXCL12/CXCR4/ACKR3 pathway could be investigated to target tumor growth, invasion, and proliferation of metastatic cells. Additionally, it opens new perspectives in the development of specific therapeutic approaches that include chemokine-based drugs. Interestingly, the CXCR4 antagonist Plerixafor (also known as AMD3100) is already Food and Drugs Administration-approved

for stem cell mobilization in several tumors, including non-Hodgkin's lymphoma and multiple myeloma (36, 37) and its systemic administration has been reported to inhibit growth of intracranial glioblastoma and medulloblastoma xenografts by increasing apoptosis and decreasing the proliferation of tumor cells (38).

Recently, several chemokines (i.e., CXCL1, CXCL10, CXCL12) have been identified as novel regulators of the hypothalamic–hypophysial axis. However, only a few studies addressed their role in the regulation of normal and tumor pituitary cell functions. In particular,

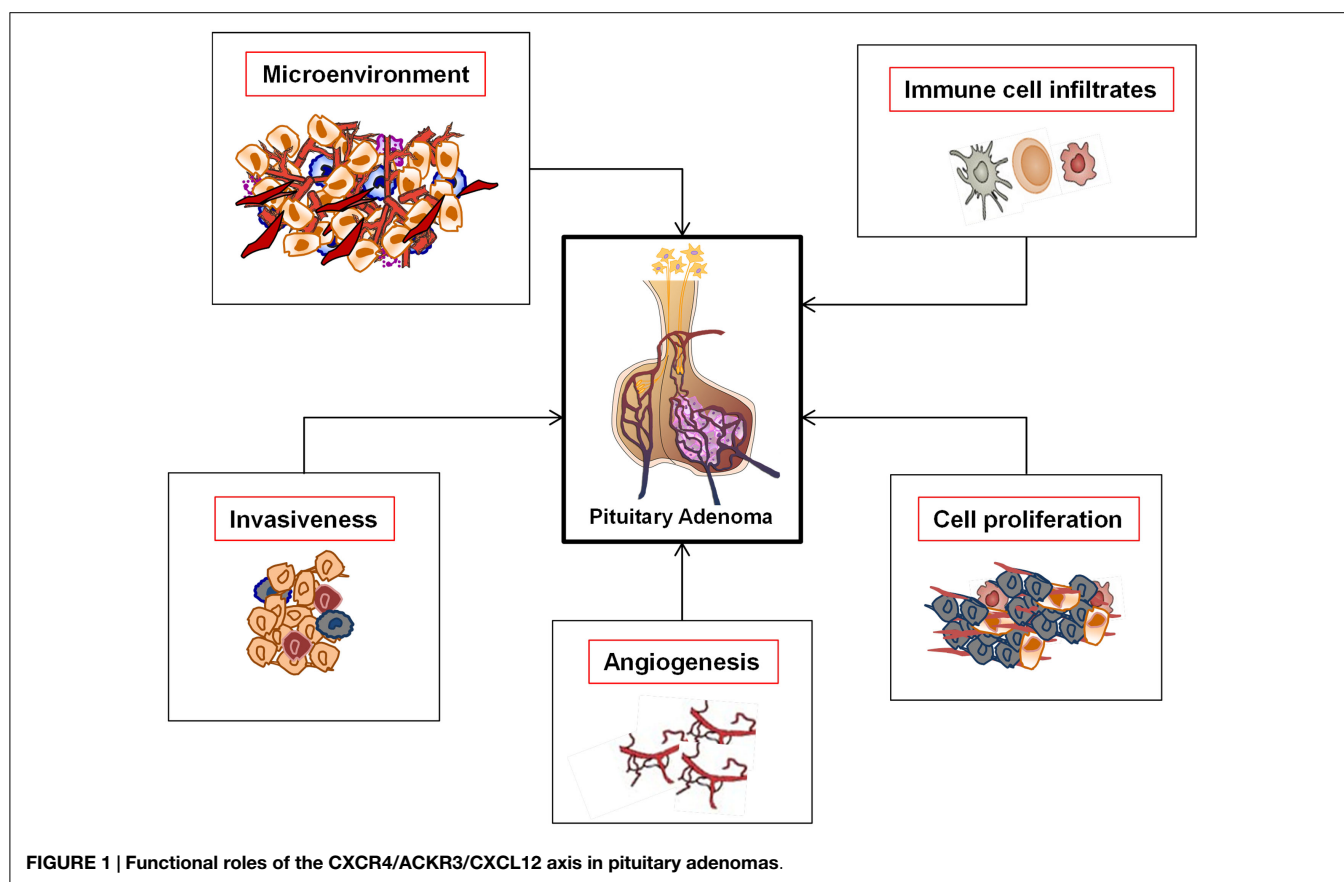
- (a) CXCL1 is indeed expressed in the posterior pituitary gland, in the paraventricular nucleus of the hypothalamus and the median eminence. In response to stressful stimuli, CXCL1 is released in the median eminence to reach its receptor CXCR2 expressed in pituitary cells and induce the release of PRL and GH along with the inhibition of LH and FSH secretion (39). CXCL1 was detected in a small percentage of human PAs and CXCR2 was identified in both human PAs without a tumor-specific phenotype and natural pituitary tissue (40).
- (b) The CXCL10 receptor CXCR3 has been reported to be expressed in corticotrophs, suggesting a possible autocrine/paracrine effect of CXCL10, released from FSH cells, on ACTH-producing cells (41).
- (c) Differently from rats (42), CXCR4 expression was confined to a subset of pituitary cells but not to a specific cell sub-population (i.e., GH-, PRL- or ACTH-secreting cells). The CXCR4 ligand CXCL12 has been identified mostly but not exclusively in ACTH-expressing pituitary cells (43, 44). It may be hypothesized that CXCR4/CXCL12 axis could be expressed in undifferentiated and/or progenitor cells and contribute to the paracrine regulation of pituitary hormone secretion. In this perspective, the possibility that pituitary CXCR4 should also be activated by the chemokine derived from the systemic circulation or from hypothalamic terminals cannot be excluded. Recently, several studies have revealed the expression of CXCL12 and/or CXCR4 in human pituitary tumors, suggesting that this chemokine may act as a promoting factor for adenoma development (43). Barbieri et al. have investigated the expression of both CXCL12 and CXCR4 in a cohort of 65 human PAs and 4 normal hypophyses and the potential autocrine–paracrine role of CXCL12 in pituitary cell proliferation (44). They provided the first evidence of CXCL12 and CXCR4 expression in normal and adenomatous human pituitary, and showed that overexpression of both ligand and receptor occurs in all the adenomatous cells compared with normal pituitary cells, thus suggesting their role in providing a gain-of-function to pituitary cells by affecting both cell proliferation and hormone secretion, thus contributing to PA development and/or progression. Differently from normal pituitary cells that do not co-express CXCL12 and CXCR4, concomitant expression of both ligand and receptor occurs in PAs, suggesting that autocrine stimulation of CXCR4 seems to represent a key characteristic of PAs. Xing et al. investigated the expression of CXCR4 and CXCL12 in 35 PAs (21 invasive and 14 non-invasive) patients who underwent surgical resection, and demonstrated that that

there was a positive correlation between the level of CXCR4 and CXCL12 and the progression stage of PAs, suggesting that CXCR4 and CXCL12 played a role in the regulation of PAs invasiveness (45). Further studies will be required to verify whether CXCL12 overexpression may cause PAs development or only provide a selective proliferation advantage favoring clonal expansion of cells in which tumor-promoting mechanisms are already activated. Moreover, the general lack of progression from PA to carcinoma and metastatic status suggests further studies to investigate the potential involvement of CXCL12/CXCR4 axis. Interestingly, ACKR3 was expressed by all the PAs, especially in GH and PRL secreting adenomas and it was observed that its expression was significantly higher in macro- than micro-adenomas (46).

It is known that the concomitant expression of ligand–receptor in the same tumor cells is one of the leading causes of clinical aggressive behavior in various cancer types. It is known that Raf/MEK/ERK and PI3K/Akt pathway deregulation is a common alteration responsible of tumor initiation and progression in melanoma (47). While the pathways are classically activated by growth factors, crosstalk and transactivation mechanisms with neuropeptide–cytokine–chemokines/GPCRs have been increasingly recognized. It has been shown that the overexpression or constitutive activation of receptors for growth factors, cytokines, and chemokines potentiates the activation of Ras/Raf/MEK/ERK pathway also in PA (48–50). Chemokines,

particularly CXCL12 signaling via CXCR4 and ACKR3, represent candidate mediators of the above-described intracellular pathways, determining proliferative, antiapoptotic, and angiogenic signals, thus possibly concurring to pituitary tumor development and aggressiveness. Therefore, the better characterization of CXCR4/ACKR3/CXCL12 axis in PAs (Figure 1) could pave the way for novel pharmacological approaches, especially for those adenoma subtypes (i.e., TSH and ACTH-secreting tumors, as well as NFPA) still waiting for efficacious therapeutic drugs. Other studies, however, highlighted that, when considering the complexity of regulatory pathways involved in pituitary cell survival and proliferation, it should be taken into account not only apoptosis but also the cellular “senescence.” Senescence is gaining biological significance also in PAs, whose typical benign nature could result from protective anti-proliferative mechanisms. PAs may be prone to activate senescence-associated pathways, maintaining their benign behavior and preventing malignant transformation. Furthermore, autophagy-related mechanisms in pituitary tumors are still under investigation (51, 52).

Cancer research has undergone radical changes over the last few years. The issue today is no longer the amount of molecular, cellular, and clinical information available, but the network interactions among the single components (53, 54). Systems biology is the latest in a series of strategies driven by technological advances that have provided us with a suite of “omics” (55). The “analytic” and the “systemic” approaches are more complementary than



opposed, yet neither one is reducible to the other. The analytic approach seeks to reduce a system to its elementary elements in order to study in detail and understand the types of interaction that exist between them. The “additive” laws of elementary properties do not apply in complex systems, i.e., PAs, composed of a large diversity of elements linked together by complex interactions. These systems must be approached by new methods such as those, which the systemic approach groups together. The purpose of the new methods is to consider a system as a “whole,” its complexity, and its own dynamics. In conclusion, although the role of chemokines in PA development has been poorly investigated,

the evaluation of CXCR4 and CXCL12 expression in invasive and non-invasive PAs has demonstrated that the percentage of CXCR4- and CXCL12 positive cells was significantly higher in invasive PAs. Therefore, the correlation of CXCR4 and CXCL12 expression levels and tumor invasiveness might be proposed as potential early diagnostic biomarkers (56). Scientific advances are revealing the complexity of pituitary development and its microenvironment, which is controlled by multiple transcription factors and signaling molecules. These results strengthen the idea that to target chemokine networks might represent a novel therapeutic approach for PAs.

References

- Di Ieva A, Rotondo F, Syro LV, Cusimano MD, Kovacs K. Aggressive pituitary adenomas – diagnosis and emerging treatments. *Nat Rev Endocrinol* (2014) **10**:423–35. doi:10.1038/nrendo.2014.64
- Aflorei ED, Korbonits M. Epidemiology and etiopathogenesis of pituitary adenomas. *J Neurooncol* (2014) **117**:379–94. doi:10.1007/s11060-013-1354-5
- Raverot G, Jouanneau E, Trouillas J. Management of endocrine disease: clinicopathological classification and molecular markers of pituitary tumours for personalized therapeutic strategies. *Eur J Endocrinol* (2014) **170**:R121–32. doi:10.1530/EJE-13-1031
- Trouillas J. In search of a prognostic classification of endocrine pituitary tumors. *Endocr Pathol* (2014) **25**:124–32. doi:10.1007/s12022-014-9322-y
- Kovacs K, Scheithauer BW, Horvath E, Lloyd RV. The World Health Organization classification of adenohypophysial neoplasms. A proposed five-tier scheme. *Cancer* (1996) **78**:502–10. doi:10.1002/(SICI)1097-0142(19960801)78:3<502::AID-CNCR18>3.0.CO;2-2
- Melmed S. Mechanisms for pituitary tumorigenesis: the plastic pituitary. *J Clin Invest* (2003) **112**:1603–18. doi:10.1172/JCI20401
- Melmed S. Pathogenesis of pituitary tumors. *Nat Rev Endocrinol* (2011) **7**:257–66. doi:10.1038/nrendo.2011.40
- Melmed S. Pituitary tumors. *Endocrinol Metab Clin North Am* (2015) **44**:1–9. doi:10.1016/j.ecl.2014.11.004
- Zemmoura I, Wierinckx A, Vasiljevic A, Jan M, Trouillas J, Francois P. Aggressive and malignant prolactin pituitary tumors: pathological diagnosis and patient management. *Pituitary* (2013) **16**:515–22. doi:10.1007/s11102-012-0448-y
- Syro LV, Rotondo F, Ramirez A, Di Ieva A, Sav MA, Restrepo LM, et al. Progress in the diagnosis and classification of pituitary adenomas. *Front Endocrinol* (2015) **6**:97. doi:10.3389/fendo.2015.00097
- Jiang X, Zhang X. The molecular pathogenesis of pituitary adenomas: an update. *Endocrinol Metab* (2013) **28**:245–54. doi:10.3803/EnM.2013.28.4.245
- Farrell WE. Epigenetic mechanisms of tumorigenesis. *Horm Metab Res* (2005) **37**:361–8. doi:10.1055/s-2005-870153
- Gadella MR, Kasuki L, Denes J, Trivellin G, Korbonits M. MicroRNAs: suggested role in pituitary adenoma pathogenesis. *J Endocrinol Invest* (2013) **36**:889–95. doi:10.1007/BF03346759
- Sivapragasam M, Rotondo F, Lloyd RV, Scheithauer BW, Cusimano M, Syro LV, et al. MicroRNAs in the human pituitary. *Endocr Pathol* (2011) **22**:134–43. doi:10.1007/s12022-011-9167-6
- Wei Z, Zhou C, Liu M, Yao Y, Sun J, Xiao J, et al. MicroRNA involvement in a metastatic non-functioning pituitary carcinoma. *Pituitary* (2015). doi:10.1007/s11102-015-0648-3
- Di Ieva A, Butz H, Niamah M, Rotondo F, De Rosa S, Sav A, et al. MicroRNAs as biomarkers in pituitary tumors. *Neurosurgery* (2014) **75**:181–9. doi:10.1227/NEU.0000000000000369 [discussion 188–9]
- Li XH, Wang EL, Zhou HM, Yoshimoto K, Qian ZR. MicroRNAs in human pituitary adenomas. *Int J Endocrinol* (2014) **2014**:435171. doi:10.1155/2014/435171
- Renner U, Paez-Pereda M, Arzt E, Stalla GK. Growth factors and cytokines: function and molecular regulation in pituitary adenomas. *Front Horm Res* (2004) **32**:96–109. doi:10.1159/000079039
- Yoshida D, Koketshu K, Nomura R, Teramoto A. The CXCR4 antagonist AMD3100 suppresses hypoxia-mediated growth hormone production in GH3 rat pituitary adenoma cells. *J Neurooncol* (2010) **100**:51–64. doi:10.1007/s11060-010-0152-6
- Charo IF, Ransohoff RM. The many roles of chemokines and chemokine receptors in inflammation. *N Engl J Med* (2006) **354**:610–21. doi:10.1056/NEJMra052723
- Bachelier F, Ben-Baruch A, Burkhardt AM, Combadiere C, Farber JM, Graham GJ, et al. International Union of Basic and Clinical Pharmacology. [corrected]. LXXXIX. Update on the extended family of chemokine receptors and introducing a new nomenclature for atypical chemokine receptors. *Pharmacol Rev* (2014) **66**:1–79. doi:10.1111/bph.12665
- Mantovani A, Locati M, Vecchi A, Sazzani S, Allavena P. Decoy receptors: a strategy to regulate inflammatory cytokines and chemokines. *Trends Immunol* (2001) **22**:328–36. doi:10.1016/S1471-4906(01)01941-X
- Mantovani A, Bonocchi R, Locati M. Tuning inflammation and immunity by chemokine sequestration: decoys and more. *Nat Rev Immunol* (2006) **6**:907–18. doi:10.1038/nri1964
- Viola A, Luster AD. Chemokines and their receptors: drug targets in immunity and inflammation. *Annu Rev Pharmacol Toxicol* (2008) **48**:171–97. doi:10.1146/annurev.pharmtox.48.121806.154841
- Williams JL, Holman DW, Klein RS. Chemokines in the balance: maintenance of homeostasis and protection at CNS barriers. *Front Cell Neurosci* (2014) **8**:154. doi:10.3389/fncel.2014.00154
- Cartier L, Hartley O, Dubois-Dauphin M, Krause KH. Chemokine receptors in the central nervous system: role in brain inflammation and neurodegenerative diseases. *Brain Res Brain Res Rev* (2005) **48**:16–42. doi:10.1016/j.brainresrev.2004.07.021
- Callewaere C, Banisadr G, Rostene W, Parsadaniantz SM. Chemokines and chemokine receptors in the brain: implication in neuroendocrine regulation. *J Mol Endocrinol* (2007) **38**:355–63. doi:10.1677/JME-06-0035
- Liu C, Cui G, Zhu M, Kang X, Guo H. Neuroinflammation in Alzheimer's disease: chemokines produced by astrocytes and chemokine receptors. *Int J Clin Exp Pathol* (2014) **7**:8342–55.
- Guyon A. CXCL12 chemokine and its receptors as major players in the interactions between immune and nervous systems. *Front Cell Neurosci* (2014) **8**:65. doi:10.3389/fncel.2014.00065
- Reaux-Le Goazigo A, Van Steenwinkel J, Rostene W, Melik Parsadaniantz S. Current status of chemokines in the adult CNS. *Prog Neurobiol* (2013) **104**:67–92. doi:10.1016/j.pneurobio.2013.02.001
- Zhu Y, Murakami F. Chemokine CXCL12 and its receptors in the developing central nervous system: emerging themes and future perspectives. *Dev Neurobiol* (2012) **72**:1349–62. doi:10.1002/dneu.22041
- Barbieri F, Bajetto A, Porcile C, Pattarozzi A, Massa A, Lunardi G, et al. CXC receptor and chemokine expression in human meningioma: SDF1/CXCR4 signaling activates ERK1/2 and stimulates meningioma cell proliferation. *Ann N Y Acad Sci* (2006) **1090**:332–43. doi:10.1196/annals.1378.037
- Bajetto A, Barbieri F, Pattarozzi A, Dorcaratto A, Porcile C, Ravetti JL, et al. CXCR4 and SDF1 expression in human meningiomas: a proliferative role in tumoral meningeothelial cells in vitro. *Neuro Oncol* (2007) **9**:3–11. doi:10.1215/15228517-2006-023
- Singh AK, Arya RK, Trivedi AK, Sanyal S, Baral R, Dormond O, et al. Chemokine receptor trio: CXCR3, CXCR4 and CXCR7 crosstalk via CXCL11 and CXCL12. *Cytokine Growth Factor Rev* (2013) **24**:41–9. doi:10.1016/j.cytogfr.2012.08.007

35. Salmaggi A, Maderna E, Calatozzolo C, Gaviani P, Canazza A, Milanese I, et al. CXCL12, CXCR4 and CXCR7 expression in brain metastases. *Cancer Biol Ther* (2009) **8**:1608–14. doi:10.4161/cbt.8.17.9202
36. Kessans MR, Gatesman ML, Kockler DR. Plerixafor: a peripheral blood stem cell mobilizer. *Pharmacotherapy* (2010) **30**:485–92. doi:10.1592/phco.30.5.485
37. Terasaki M, Sugita Y, Arakawa F, Okada Y, Ohshima K, Shigemori M. CXCL12/CXCR4 signaling in malignant brain tumors: a potential pharmacological therapeutic target. *Brain Tumor Pathol* (2011) **28**:89–97. doi:10.1007/s10014-010-0013-1
38. Rubin JB, Kung AL, Klein RS, Chan JA, Sun Y, Schmidt K, et al. A small-molecule antagonist of CXCR4 inhibits intracranial growth of primary brain tumors. *Proc Natl Acad Sci U S A* (2003) **100**:13513–8. doi:10.1073/pnas.2235846100
39. Sakamoto Y, Koike K, Kiyama H, Konishi K, Watanabe K, Osako Y, et al. Endotoxin activates a chemokinergic neuronal pathway in the hypothalamo-pituitary system. *Endocrinology* (1996) **137**:4503–6. doi:10.1210/en.137.10.4503
40. Tecimer T, Dlott J, Chuntharapai A, Martin AW, Peiper SC. Expression of the chemokine receptor CXCR2 in normal and neoplastic neuroendocrine cells. *Arch Pathol Lab Med* (2000) **124**:520–5.
41. Horiguchi K, Fujiwara K, Higuchi M, Yoshida S, Tsukada T, Ueharu H, et al. Expression of chemokine CXCL10 in dendritic-cell-like S100beta-positive cells in rat anterior pituitary gland. *Cell Tissue Res* (2014) **357**:757–65. doi:10.1007/s00441-014-1864-2
42. Lee Y, Kim JM, Lee EJ. Functional expression of CXCR4 in somatotrophs: CXCL12 activates GH gene, GH production and secretion, and cellular proliferation. *J Endocrinol* (2008) **199**:191–9. doi:10.1677/JOE-08-0250
43. Rostene W, Guyon A, Kular L, Godefroy D, Barbieri F, Bajetto A, et al. Chemokines and chemokine receptors: new actors in neuroendocrine regulations. *Front Neuroendocrinol* (2011) **32**:10–24. doi:10.1016/j.yfrne.2010.07.001
44. Barbieri F, Bajetto A, Stumm R, Pattarozzi A, Porcile C, Zona G, et al. Overexpression of stromal cell-derived factor 1 and its receptor CXCR4 induces autocrine/paracrine cell proliferation in human pituitary adenomas. *Clin Cancer Res* (2008) **14**:5022–32. doi:10.1158/1078-0432.CCR-07-4717
45. Xing B, Kong YG, Yao Y, Lian W, Wang RZ, Ren ZY. Study on the expression levels of CXCR4, CXCL12, CD44, and CD147 and their potential correlation with invasive behaviors of pituitary adenomas. *Biomed Environ Sci* (2013) **26**:592–8. doi:10.3967/0895-3988.2013.07.011
46. Yoshida D, Nomura R, Teramoto A. Signalling pathway mediated by CXCR7, an alternative chemokine receptor for stromal-cell derived factor-1alpha, in AtT20 mouse adrenocorticotrophic hormone-secreting pituitary adenoma cells. *J Neuroendocrinol* (2009) **21**:481–8. doi:10.1111/j.1365-2826.2009.01867.x
47. Meier F, Schitteck B, Busch S, Garbe C, Smalley K, Satyamoorthy K, et al. The RAS/RAF/MEK/ERK and PI3K/AKT signaling pathways present molecular targets for the effective treatment of advanced melanoma. *Front Biosci* (2005) **10**:2986–3001. doi:10.2741/1755
48. Dworakowska D, Wlodek E, Leontiou CA, Igreja S, Cakir M, Teng M, et al. Activation of RAF/MEK/ERK and PI3K/AKT/mTOR pathways in pituitary adenomas and their effects on downstream effectors. *Endocr Relat Cancer* (2009) **16**:1329–38. doi:10.1677/ERC-09-0101
49. Suojun Z, Feng W, Dongsheng G, Ting L. Targeting Raf/MEK/ERK pathway in pituitary adenomas. *Eur J Cancer* (2012) **48**:389–95. doi:10.1016/j.ejca.2011.11.002
50. Rubinfeld H, Shimon I. PI3K/Akt/mTOR and Raf/MEK/ERK signaling pathways perturbations in non-functioning pituitary adenomas. *Endocrine* (2012) **42**:285–91. doi:10.1007/s12020-012-9682-3
51. Weckman A, Rotondo F, Di Ieva A, Syro LV, Butz H, Cusimano MD, et al. Autophagy in endocrine tumors. *Endocr Relat Cancer* (2015) **22**:R205–18. doi:10.1530/ERC-15-0042
52. Weckman A, Di Ieva A, Rotondo F, Syro LV, Ortiz LD, Kovacs K, et al. Autophagy in the endocrine glands. *J Mol Endocrinol* (2014) **52**:R151–63. doi:10.1530/JME-13-0241
53. Grizzi F, Chiriva-Internati M. Cancer: looking for simplicity and finding complexity. *Cancer Cell Int* (2006) **6**:4. doi:10.1186/1475-2867-6-4
54. Grizzi F, Di Ieva A, Russo C, Frezza EE, Cobos E, Muzzio PC, et al. Cancer initiation and progression: an unsimplifiable complexity. *Theor Biol Med Model* (2006) **3**:37. doi:10.1186/1742-4682-3-37
55. Burgess DJ. Cancer genetics: omics analyses of tumour immunity. *Nat Rev Genet* (2015) **16**:130–1. doi:10.1038/nrg3904
56. Sayegh ET, Kaur G, Bloch O, Parsa AT. Systematic review of protein biomarkers of invasive behavior in glioblastoma. *Mol Neurobiol* (2014) **49**:1212–44. doi:10.1007/s12035-013-8593-5

Conflict of Interest Statement: The authors declare that the research was conducted in the absence of any commercial or financial relationships that could be construed as a potential conflict of interest.

Copyright © 2015 Grizzi, Borroni, Vacchini, Qehajaj, Liguori, Stifter, Chiriva-Internati and Di Ieva. This is an open-access article distributed under the terms of the Creative Commons Attribution License (CC BY). The use, distribution or reproduction in other forums is permitted, provided the original author(s) or licensor are credited and that the original publication in this journal is cited, in accordance with accepted academic practice. No use, distribution or reproduction is permitted which does not comply with these terms.