

RESEARCH ARTICLE

Estrogen Receptor β Agonists Differentially Affect the Growth of Human Melanoma Cell Lines

Monica Marzagalli¹, Lavinia Casati², Roberta M. Moretti¹, Marina Montagnani Marelli¹, Patrizia Limonta¹*

1 Department of Pharmacological and Biomolecular Sciences, Università degli Studi di Milano, Milano, Italy,

2 Department of Medical Biotechnologies and Translational Medicine, Università degli Studi di Milano, Milano, Italy

* patrizia.limonta@unimi.it


 OPEN ACCESS

Citation: Marzagalli M, Casati L, Moretti RM, Montagnani Marelli M, Limonta P (2015) Estrogen Receptor β Agonists Differentially Affect the Growth of Human Melanoma Cell Lines. PLoS ONE 10(7): e0134396. doi:10.1371/journal.pone.0134396

Editor: Alessandro Weisz, University of Salerno, Faculty of Medicine and Surgery, ITALY

Received: April 2, 2015

Accepted: July 8, 2015

Published: July 30, 2015

Copyright: © 2015 Marzagalli et al. This is an open access article distributed under the terms of the [Creative Commons Attribution License](https://creativecommons.org/licenses/by/4.0/), which permits unrestricted use, distribution, and reproduction in any medium, provided the original author and source are credited.

Data Availability Statement: All relevant data are within the paper.

Funding: Funding was provided by Fondazione Banca del Monte di Lombardia 2012, <http://www.fbml.it/> (P.L., L.C., R.M.M., M.M.M.); PRIN-MIUR 2010-20112010, NFE9L_004, <http://prin.miur.it/> (P.L., R.M.M., M.M.M.). The funders had no role in study design, data collection and analysis, decision to publish, or preparation of the manuscript.

Competing Interests: The authors have declared that no competing interests exist.

Abstract

Background

Cutaneous melanoma is an aggressive malignancy; its incidence is increasing worldwide and its prognosis remains poor. Clinical observations indicate that estrogen receptor β (ER β) is expressed in melanoma tissues and its expression decreases with tumor progression, suggesting its tumor suppressive function. These experiments were performed to investigate the effects of ER β activation on melanoma cell growth.

Methods and Results

Protein expression was analyzed by Western blot and immunofluorescence assays. Cell proliferation was assessed by counting the cells by hemocytometer. ER β transcriptional activity was evaluated by gene reporter assay. Global DNA methylation was analyzed by restriction enzyme assay and ER β isoforms were identified by qRT-PCR. We demonstrated that ER β is expressed in a panel of human melanoma cell lines (BLM, WM115, A375, WM1552). In BLM (NRAS-mutant) cells, ER β agonists significantly and specifically inhibited cell proliferation. ER β activation triggered its cytoplasmic-to-nuclear translocation and transcriptional activity. Moreover, the antiproliferative activity of ER β agonists was associated with an altered expression of G1-S transition-related proteins. In these cells, global DNA was found to be hypomethylated when compared to normal melanocytes; this DNA hypomethylation status was reverted by ER β activation. ER β agonists also decreased the proliferation of WM115 (BRAF V600D-mutant) cells, while they failed to reduce the growth of A375 and WM1552 (BRAF V600E-mutant) cells. Finally, we could observe that ER β isoforms are expressed at different levels in the various cell lines. Specific oncogenic mutations or differential expression of receptor isoforms might be responsible for the different responses of cell lines to ER β agonists.

Conclusions

Our results demonstrate that ER β is expressed in melanoma cell lines and that ER β agonists differentially regulate the proliferation of these cells. These data confirm the notion that melanoma is a heterogeneous tumor and that genetic profiling is mandatory for the development of effective personalized therapeutic approaches for melanoma patients.

Introduction

The incidence of cutaneous melanoma is increasing worldwide [1] and its prognosis is still poor [2]. Cytotoxic drugs, dacarbazine or temozolomide, were reported to be associated with serious side effects and with development of resistance. Interleukin-2 or interferon- α yielded limited response rates with no benefit on overall survival or progression-free survival [3]. Patients treated with either mutated BRAF or MEK inhibitors, despite initial excellent response rates, showed a rapid relapse [4]. The anti-CTLA-4 (cytotoxic T-lymphocyte antigen 4) monoclonal antibody ipilimumab, despite its effectiveness, has side effects that can be non-reversible (autoimmune responses, bowel perforation) [5]. Thus, the elucidation of the molecular mechanisms of melanoma growth and progression is urgently needed for the identification of novel targets of intervention for the prevention and therapy of this disease [6].

The association of estrogens with tumor development has been investigated for many years. Estrogens exert their effects through the binding to two estrogen receptor (ER) subtypes, ER α and ER β . These receptors are structurally similar, however they differ in the ligand binding domain and this confers them selectivity for different ligands [7]. After being activated by the binding of 17 β -estradiol (E₂) or of synthetic compounds these receptors exert their effects at the nuclear level through the binding to estrogen response elements on DNA to regulate the expression of specific target genes [7,8].

Both ER subtypes are expressed in different cells/tissues where they are involved in the control of specific physiological functions [9]. In addition, the activation of the two receptor subtypes elicits opposite effects on cancer growth and progression. ER α is associated with a proliferative activity while ER β exerts a significant antitumor effect, being considered a protein with tumor suppressive functions [7,10,11]. These observations indicate that the actions of estrogens on cancer growth might depend on the relative ER α /ER β ratio in a given tumor cell/tissue [12]. The expression of ER β was found to be reduced in several cancer cells [13,14]. Moreover, overexpression of ER β or its activation by means of agonistic ligands were reported to inhibit cell proliferation in different tumor cells, both classically related (breast, ovarian, and prostate cancer) [15–17] and unrelated (colon cancer, mesothelioma, cholangiocarcinoma, lymphoma) [18–21] to the reproductive system. Research is now focusing on the development and evaluation of selective ER β ligands that might increase the activity of this receptor in tumors [8]. The expression of the different variants of this receptor (ER β 1, corresponding to ER β , ER β 2 and ER β 5) and their specific role in tumor growth are also under investigation [22].

Increasing evidence suggests that ER β might play a fundamental role also in the development and progression of melanoma [23]. Population data have established that women have survival advantage over men [24,25]. Moreover, men were reported to express lower levels of ER β than women in both melanoma and healthy tissues [26]. More importantly, the expression levels of ER β inversely correlate with melanoma progression [26,27]. These observations strongly support an antitumor activity of ER β also in melanoma.

Alterations of DNA methylation, histone modifications, and modified expression of micro-RNAs are well-established epigenetic mechanisms of cell neoplastic transformation. In particular, melanoma cells present aberrant DNA methylation patterns with DNA hypermethylation at the level of CpG islands in the promoter of tumor suppressor genes (leading to their inactivation) and global DNA hypomethylation (contributing to genomic instability). Hypomethylation of specific genes was also shown, leading to the overexpression of normally silenced oncogenes [28,29]. Global DNA hypomethylation was reported to correlate with melanoma progression to the most aggressive phase and with less favourable clinical outcomes [28,30]. Epigenetic modifications and their reversibility by means of pharmacologic interventions might offer promising novel therapies for melanoma patients.

In this paper, we demonstrate that ER β (but not ER α) is expressed in a panel of human melanoma cell lines (BLM, WM115, A375, WM1552). In BLM (NRAS-mutant) cells, activation of this receptor, by means of agonistic ligands, induces its translocation into the nucleus and initiation of transcriptional activity, thereby significantly and specifically decreasing melanoma cell proliferation. This antitumor activity is accompanied by an altered expression of the proteins involved in the G1-S progression of the cell cycle, but not by triggering of the apoptosis pathway. Moreover, in these cells, ER β agonists increase global DNA methylation, reverting the observed DNA hypomethylation status of melanoma cells compared to normal melanocytes.

ER β agonists also exert a tumor suppressor activity in WM115 (BRAF V600D-mutant) cells, while they fail to reduce cell proliferation in A375 and WM1552 (BRAF V600E-mutant) cells. Moreover, ER β isoforms show different levels of expression in the various cell lines. The possible reasons for the differential effects of ER β agonists on the growth of the melanoma cells (oncogenic mutations, receptor isoform expression) are discussed.

Materials and Methods

Cell culture and reagents

The human BLM (NRAS-mutant, BRAF-wild type) melanoma cell line was provided by Dr. G. N. van Muijen (Department of Pathology, Radboud University Nijmegen Medical Center, Nijmegen, The Netherlands). This cell line is a subline of BRO melanoma cells isolated from lung metastases after subcutaneous inoculation of nude mice with BRO cells [31]. This cell line was previously utilized in the authors' laboratory to study the antitumor activity of gonadotropin-releasing hormone receptors in melanoma cells [32,33]. The human WM115 (BRAF V600D-mutant) and WM1552 (BRAF V600E-mutant) melanoma cell lines, kindly provided by Dr. R. Giavazzi (Department of Oncology, Mario Negri Institute for Pharmacological Research, Milano, Italy) were originally from Dr. M. Herlyn (Wistar Institute, Philadelphia, PA) [34,35]. The human IGR-39 (BRAF V600E-mutant) melanoma cell line, kindly provided by Dr. C.A. La Porta, was originally from Leibniz-Institut DSMZ-Deutsche Sammlung von Mikroorganismen und Zellkulturen GmbH (38124 Braunschweig, Germany). The human MCF-7 breast cancer, A375 (BRAF V600E-mutant) and embryonic kidney (HEK) 293 cells were from American Type Culture Collection (ATCC, Manassas, VA, USA). Primary human melanocytes were provided by Dr. F. Crovato (Regional Reference Centre for Human Epidermis *in vitro* Culture and Bank for Tissue Cryopreservation, Niguarda Hospital, Milano, Italy). Stocks of cells were stored frozen in liquid nitrogen and kept in culture for no more than 10–12 weeks.

MCF-7 and WM115 cells were routinely grown in RPMI-1640 medium supplemented with 10% FBS, glutamine (1 mmol/l) and antibiotics (100 IU/ml, penicillin G sodium and 100 μ g/ml streptomycin sulfate). BLM, A375, WM1552, IGR-39 and HEK293 cells were routinely

cultured in DMEM medium supplemented with 10% FBS, glutamine and antibiotics, as described above. Cells were cultured in humidified atmosphere of 5% CO₂/95% air at 37°C.

17 β -Estradiol was purchased from Sigma-Aldrich (Milano, Italy); the ER antagonist ICI 182,780 and the ER β agonist DPN (diarylpropionitrile) were from Tocris Biosciences (Bristol, UK). The selective ER β agonists KB1, KB2, and KB4 were kindly provided by Dr. S. Nilsson (Karo Bio AB, Novum, SE-141 57 Huddinge, Sweden). KB1 (also known as KB9520) was previously utilized in different studies as the specific ligand of ER β to investigate the antitumor activity of the receptor in cancer cells [14,20,21,36]. The selective activity of this class of compounds as ER β ligands was previously demonstrated [37]. The compounds can be obtained following contact with Karo Bio AB and after signing of a Material Transfer Agreement together with a detailed protocol of planned study. A fee covering the cost of compound synthesis will be charged.

ER β overexpression

The plasmid pCMV5-hERbeta, expressing human wild type ER β , was kindly provided by Dr. A. Maggi (Department of Pharmacological and Biomolecular Sciences, University of Milano, Milano, Italy). BLM cells were plated (8×10^4 cells/dish) in 6-well plates in DMEM complete medium. After 48 h, the medium was replaced with DMEM medium and the cells were transiently transfected using Lipofectamine 2000 (Invitrogen, Monza, Italy), according to the manufacturer's protocol. After 24–72 h of transfection the cells were lysed in RIPA buffer for protein extraction.

Western blot analysis

Cells were lysed in RIPA buffer (0.05 M Tris-HCl pH 7.7, 0.15 M NaCl, 0.8% SDS, 10 mM EDTA, 100 μ M NaVO₄, 50 mmol/L NaF, 0.3 mM PMSF, 5 mM iodoacetic acid) containing leupeptin (50 μ g/ml), aprotinin (5 μ l/ml) and pepstatin (50 μ g/ml). Protein concentration in lysates was determined using the BCA method. Protein extracts (20–30 μ g) were resuspended in Sample buffer (0.5 M Tris.HCl pH 6.8, 20% glycerol, 10% SDS, 0.2% 2 β -mercaptoethanol, 0.05% blue bromophenol) and heated at 95°C for 5 min. Following electrophoretic separation by 10% SDS-PAGE, proteins were transferred onto nitrocellulose membranes. Membranes were blocked in nonfat dry milk (7.5% for ER β and 5% for ER α) prior to incubation at 4°C overnight with the primary antibodies (1:1000): rabbit polyclonal antibody SC 8974 (clone H-150, Santa Cruz Biotechnology, Santa Cruz, CA) and mouse monoclonal antibody ab288 (clone 14C8, Abcam, Cambridge, MA) for ER β ; rat monoclonal antibody Ab-21 (clone H222, Thermo Scientific, Waltham, MA) for ER α . Detection was done using a horseradish-peroxidase-conjugated secondary antibody and enhanced chemiluminescence reagents (GE Healthcare, Life Sciences, Milano, Italy).

To investigate the effects of ER β activation on the expression of cell cycle/apoptosis-related proteins, BLM cells were plated (5×10^5 cells/dish) in 10-cm dishes, in standard culture conditions, for 48 h. Medium was then changed to phenol red free medium supplemented with 10% charcoal stripped FBS and treated with DPN (10^{-8} M) for 24, 48, or 72 h. Protein preparations were then processed for Western blotting, as described above, with the following primary antibodies: mouse monoclonal antibody against cyclin D1 (1:2000; clone DCS-6), mouse monoclonal antibody against cyclin D3 (1:1000; clone DCS22), rabbit monoclonal antibody against p21^{Waf1/Cip1} (1:1000; clone 12D1), rabbit monoclonal antibody against p27^{Kip1} (1:1000; clone D69C12), rabbit monoclonal antibody against CDK4 (1:1000; clone D9G3E), mouse monoclonal antibody against CDK6 (1:2000, clone DCS83), rabbit monoclonal antibody against caspase-3 (1:500, clone 8G10), and rabbit monoclonal antibody against cleaved caspase-3

(Asp175; 1:500, clone 5A1E). All these primary antibodies were from Cell Signaling Technology (Danvers, MA). Detection was done using a horseradish peroxidase-conjugated anti-mouse or a horseradish peroxidase-conjugated anti-rabbit secondary antibody (Santa Cruz Biotechnology), according to the primary antibody used, and enhanced chemiluminescence ECL-Prime reagents (GE Healthcare, Life Sciences). In each experiment, actin expression was evaluated as a loading control, using the goat polyclonal anti-human antibody (1:1000; I-19, sc-1616, Santa Cruz Biotechnology) as the primary antibody. Detection was done using a horseradish peroxidase-conjugated anti-goat secondary antibody (Santa Cruz Biotechnology) and enhanced chemiluminescence reagents, as described above. The experiments were repeated three times.

Cell proliferation assays

BLM melanoma cells were plated (15×10^3 cells/dish) in 6-cm dishes in DMEM complete medium. After 48 h, the medium was replaced with phenol red free medium supplemented with 10% charcoal stripped FBS. Cells were then treated as follows: i) DPN (10^{-9} , 5×10^{-9} , 10^{-8} , 5×10^{-8} , 10^{-7} M); E₂ (10^{-9} , 10^{-8} , 10^{-7} M); KB1, KB2, or KB4 (10^{-9} , 10^{-8} , 10^{-7} M); KB1 (10^{-9} , 5×10^{-9} , 10^{-8} , 5×10^{-8} , 10^{-7} M) every 48 h, for three times; ii) ICI 182,780 (10^{-6} M) for 1 h, followed by DPN, E₂, or K1 (10^{-8} M) every 48 h, for three times. Cells were then harvested and counted by hemocytometer.

Experiments were also performed on IGR-39 (expressing almost undetectable levels of ER β) and on A375, WM1552 and WM115 melanoma cells. IGR-39, A375 and WM1552 cells were treated with DPN (10^{-9} , 10^{-8} , 10^{-7} M); WM115 cells were treated with DPN, E₂ or KB1 (10^{-10} , 10^{-9} , 10^{-8} , 10^{-7} M) as described above. Each proliferation assay was repeated three-five times.

Immunofluorescence assay

BLM cells (2×10^4 cells) were seeded on 13-mm diameter coverslips in DMEM complete medium. After 48 h, the medium was replaced with phenol red free medium supplemented with 10% charcoal stripped FBS. Cells were then treated with either DPN or E₂ (10^{-8} M) for 24 h, fixed with 4% paraformaldehyde in 2% sucrose-PBS for 15 min and permeabilized with 0.2% PBS/Triton buffer (1 mM PBS, 300 mM sucrose, 50 mM NaCl, 3 mM MgCl₂, 0.5% Triton X-100) for 20 min at room temperature and stained with the primary rabbit anti-human ER β polyclonal antibody SC 8974 (1:50; clone H-150, Santa Cruz Biotechnology), followed by FITC-conjugated goat anti-rabbit secondary antibody Alexa Fluor 488 (1:2000; Molecular Probes Inc., Eugene, OR). Labeled cells were examined under a Zeiss Axiovert 200 microscope with a 63x/1.4 objective lens linked to a Coolsnap Es CCD camera (Roper Scientific-Crisel Instruments, Roma, Italy). The experiment was repeated three times.

ER β transcriptional activity assay

BLM cells, seeded in 24-well plates (5×10^4 cells/well) in phenol red free DMEM medium supplemented with 10% charcoal stripped FBS, were transfected using Lipofectamine 2000 (Life Technologies, Monza, Italy), according to the manufacturer's protocol [38]. The following constructs were cotransfected: pVERE-tk-Luc (1 μ g), the reporter plasmid encoding the firefly luciferase reporter gene under the control of the estrogen response element (ERE; kindly provided by Dr. A. Maggi, Department of Pharmacological and Biomolecular Sciences, University of Milano, Milano, Italy), to evaluate the transcriptional activity of ER β , and pCMV β (0.4 μ g), the reporter plasmid encoding the β -galactosidase (Clontech, Jesi, Italy), as the internal control plasmid. Efficiency of transfection was evaluated by fluorescent microscopy by transfecting the plasmid vector pCMV-pEGFP-N1 (Clontech).

ER β transcriptional activity was measured using the neolite system (PerkinElmer, Boston, MA), according to the manufacturer's protocols. Briefly, 6 h after transfection, BLM cells were treated with DPN (10^{-8} M), E $_2$ (10^{-8} M), or ethanol (controls) for 24 h. Cell medium was removed and 175 μ l of fresh medium were added to each well. Neolite luciferase reagent (175 μ l) was added to each sample and firefly luminescence was read after 10 min. At the end of this step, 100 μ l of the lysate were added in a microcentrifuge tube containing the assay buffer with ortho-Nitrophenyl- β -galactoside (ONPG). If β -galactosidase is present, it hydrolyzes the ONPG molecule into galactose and ortho-nitrophenol (yellow color). The samples were transferred into a 96-well plate and analyzed in an EnSpire Multimode Plate reader (PerkinElmer) at 420 nm. Data are expressed as the mean of the ratio (\pm SE) between luminescence of the experimental reporter (firefly luciferase activity) and that of the control reporter (β -galactosidase activity) and are the mean values from three replicates of three distinct experiments.

Methylation analysis of GC-rich regions

DNA from human melanocytes and BLM cells was extracted using Qiagen column methods (Qiagen, Milano, Italy) according to the manufacturer's protocol. DNA quality and concentration was evaluated by measuring the 260/280 nm optical ratio using Nanodrop 2000 (OD260/280).

Digestion of genomic DNA with restriction enzymes RsaI, MspI and HpaII (Euroclone, Pero, Milano, Italy) was performed, as previously described [39]. For each DNA sample, 2 restriction digests were performed: one with RsaI and MspI, and one with RsaI and HpaII. RsaI is methylation insensitive, while MspI and HpaII are sensitive to DNA methylation and are able to cut only unmethylated restriction sites. In general, MspI will not cut if the external cytosine is methylated, and HpaII will not cut if any of the two cytosines is methylated [39,40]. Global DNA digestion was performed o/n at 37°C. Restriction digests were performed with 1 μ g of DNA and 5 units of RsaI in Roche buffer L. After 1 h incubation at 37°C, 2.5 unit aliquots of MspI or HpaII were added, 2 h apart. Total incubation time was 18 h. The enzymes were inactivated by 10-min incubation at 65°C, and the digests were used for PCR using a single primer (5'-AACCCCTCACCCCTAACCCCGG-3') that arbitrarily binds within GC-rich regions of DNA. Samples were resolved on 1% agarose gel. The intensity of the band was determined using ImageLab (Chemidoc Imager, Bio-Rad, Segrate, Milano, Italy). Data are expressed as the MspI/RsaI or HpaII/RsaI ratios relative to the intensity of the bands.

To investigate the effects of ER β activation on the global DNA methylation profile of melanoma cells, BLM cells, seeded in 6-well plates (3×10^4 cell/well), in phenol red free DMEM medium supplemented with 10% charcoal stripped FBS, were treated with DPN (10^{-8} M), E $_2$ (10^{-8} M), or ethanol (controls) for 24 or 48 h. The analysis of DNA methylation profile was performed as described above. Each experiment was repeated three times.

ER β isoform expression by quantitative PCR

Total RNA from BLM, A375 and WM115 cells was isolated by RNeasy MINI kit (Qiagen) for the evaluation of the expression of ER β isoforms; RNA pellets were dissolved in sterile distilled water and their concentrations were assessed using Nanodrop 2000 (OD260/280). Specific set of primers for each ER β isoform were synthesized (Sigma-Aldrich) and utilized, as previously described by Collins and coworkers [41]. Real time-DNA amplification for ER β was performed in CFX96 Bio-Rad using 20 μ l of total volume. The efficiency of each set of primer was evaluated in preliminary experiment and it was found close to 100% for target genes and for the housekeeping gene glyceraldehyde-3-phosphate dehydrogenase (GAPDH). 600 ng of total

RNA were retrotranscribed using the IScript Supermix kit (Bio-Rad), according to the manufacturer's protocol. The reaction was carried out on 40 ng of total cDNA using SYBR chemistry (iTAQ Universal SYBR green supermix, Bio-Rad) according to the manufacturer's protocol. Real-time PCR was run according to the following protocol: an initial step of 30 sec at 95°C followed by 40 cycles of 5 sec at 95°C and 30 sec at 60°C. A dissociation stage with a melt curve analysis was also performed. Three replicates were performed for each experimental point and experiments were repeated three times. Gene expression was quantified using the comparative threshold-cycle (Ct) method considering that the targets and the reference genes have the same amplification efficiency (near to 100%) [42]. In each cell line, Δ Ct values (difference between target and reference gene Ct) for ER β 2 or ER β 5 were compared with ER β 1 Δ Ct value in the same cell line.

Statistical analysis

When appropriate, data were analyzed by Dunnet's or Bonferroni's test, after one-way analysis of variance. A *P* value <0.05 was considered statistically significant.

Results

Expression of ER β in human melanoma cell lines

The expression of ER β in human melanoma cell lines was analyzed by Western blot assay utilizing two primary antibodies: H-150 (Santa Cruz Biotechnology) and 14C8 (Abcam). First, in order to obtain an appropriate positive control, ER β was evaluated in BLM melanoma cells engineered to overexpress the receptor protein. Fig 1A shows that a protein band, corresponding to the molecular weight of 59 kDa, is expressed in BLM cells either in normal culture conditions (C) or in the presence of Lipofectamine (Lipo), at 24–72 h. More importantly, Fig 1A also shows that the expression levels of this protein band are sharply increased in BLM cells overexpressing the receptor (ER β) at 24 after transfection, and slightly decrease at 48 and 72 h. These data, obtained with the two different antibodies, confirm that the molecular weight of this receptor subtype corresponds to 59 kDa, as previously reported [43,44].

ER β expression was then analyzed, utilizing the two primary ER β antibodies (H-150 and 14C8) in a panel of human melanoma cell lines. Fig 1B shows that a specific band corresponding to the molecular weight of 59 kDa, is expressed in BLM (lane 3; confirming the data reported in Fig 1A), A375 (lane 4), WM115 (lane 5) and WM1552 (lane 7) human melanoma cells. Fig 1B also shows that in the human IGR-39 melanoma cell line (lane 6) the receptor is expressed at almost undetectable levels. The molecular weight of the protein band detected in the melanoma cell lines corresponds to that found in human MCF-7 breast cancer cells (positive control; lane 1). As expected, no band of this size could be detected in the HEK293 cells (negative control; lane 2), confirming previous observations [45]. It should be underlined that, when evaluated with the 14C8 primary antibody, the level of expression of the receptor in MCF-7 cells was found to be low, and this agrees with previous data in the literature [46,47]. On the other hand, in these cells the receptor seems to be expressed at higher levels when evaluated with the H-150 antibody. At present, the reason for this discrepancy is unclear; however, it might be due to a different degree of specificity of the two antibodies.

No band corresponding to ER α (67 kDa) could be detected in any of the melanoma cell lines analyzed (Fig 1C, lanes 2–6), confirming previous observations [48]; as expected, this estrogen receptor subtype was expressed at high levels in human MCF-7 breast cancer cells (positive control; Fig 1, lane 1). These data indicate that ER β , but not ER α , is the estrogen receptor subtype expressed in most human melanoma cells.

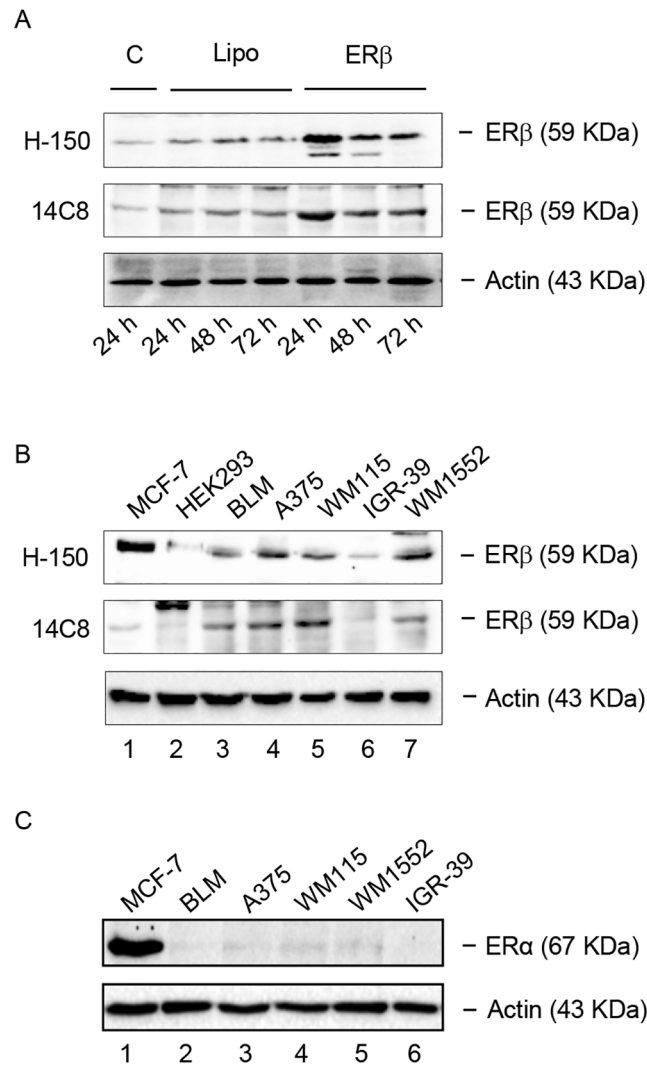


Fig 1. ERβ, but not ERα, is expressed in human melanoma cells. (A) As a positive control, the expression of ERβ was evaluated by Western blot analysis in human BLM melanoma cells engineered to overexpress the receptor subtype protein, utilizing two primary antibodies: H-150 (Santa Cruz) and 14C8 (Abcam). A band corresponding to the receptor protein (59 kDa) was detected in basal conditions, both in control (C) and in Lipofectamine (Lipo) treated BLM cells. As expected, the intensity of this band was found to be significantly increased after ERβ overexpression (24–72 h), with the highest level of expression at 24 h. (B) By Western blot analysis, utilizing the two primary antibodies H-150 and 14C8, ERβ was found to be expressed at high levels in human BLM, A375, WM115, WM1552 melanoma cell lines (lanes 3, 4, 5, 7), while the human IGR-39 melanoma cell line expressed the receptor at almost undetectable levels (lane 6). ERβ was also expressed in human MCF-7 breast cancer cells, utilized as a positive control (lane 1), but it was not expressed in the human HEK293, utilized as a negative control. (C) On the other hand, all the human melanoma cells lines tested (lanes 2–6) did not express the ERα receptor isoform, which was expressed only in the control cell line (MCF-7, lane 1). β-actin was utilized as a loading control. For each analysis, one representative of three different experiments, which gave similar results, is shown.

doi:10.1371/journal.pone.0134396.g001

ERβ agonists inhibit the proliferation of BLM melanoma cells

Experiments were first performed to investigate the effects of ERβ activation on the growth of BLM melanoma cells, expressing ERβ. The selective ERβ agonist DPN decreased BLM cell proliferation at the concentrations of 10^{-9} and 5×10^{-9} M, being significantly effective at the dose of

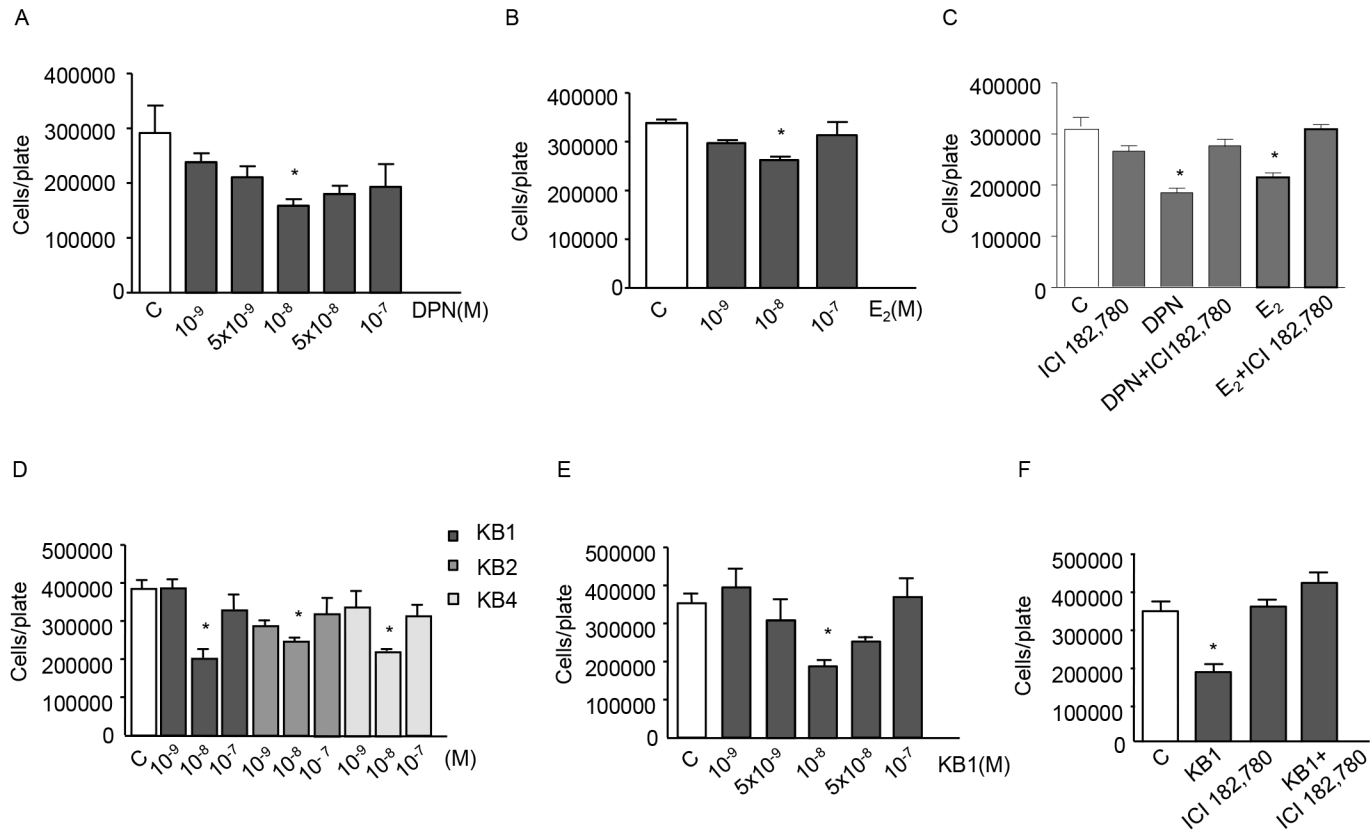


Fig 2. ERβ agonists significantly and specifically inhibit the proliferation of BLM melanoma cells. (A) BLM cells were treated with different doses of the classical ERβ agonist DPN every 48 h for three times. DPN significantly decreased cell proliferation at the dose of 10^{-8} M. (B) Similar results were obtained when the cells were treated with E_2 . (C) The antiproliferative effect of both ERβ ligands (10^{-8} M) was found to be specific since it was completely abrogated by cotreatment of the cells with the ER antagonist ICI 182,780 (10^{-6} M). (D) BLM cells were treated with KB1, KB2, or KB4 (10^{-9} , 10^{-8} , 10^{-7} M) every 48 h for three times. All three ERβ ligands significantly reduced cell proliferation at the dose of 10^{-8} M. (E) BLM cells were treated with KB1, at different doses (10^{-9} – 10^{-7} M). The ERβ agonists decreased cell growth, being significantly effective at the dose of 10^{-8} M. (F) The antiproliferative activity of KB1 (10^{-8} M) was found to be specific since it was completely abrogated by cotreatment of the cells with the ER antagonist ICI 182,780. Each experimental group consisted of six replicates and each experiment was repeated three-five times. Results are given as cell number/plate. Data represent mean values \pm SEM. * $P < 0.05$. C, controls.

doi:10.1371/journal.pone.0134396.g002

10^{-8} M (Fig 2A). This significant effect was followed by a decline at concentrations of 5×10^{-8} and 10^{-7} M. Accordingly, the natural estrogenic ligand E_2 exerted a significant antiproliferative effect on BLM cell proliferation at the concentration of 10^{-8} M (Fig 2B). The antiproliferative activity of both DPN and E_2 (10^{-8} M) was completely counteracted by cotreatment of the cells with the ER antagonist ICI 182,780 (10^{-6} M) (Fig 2C).

Experiments were also performed with different ERβ agonists (KB1, KB2, KB4). We found that all these compounds significantly inhibit BLM cell proliferation at the concentration of 10^{-8} M (Fig 2D); the dose-response curve obtained after treating the cells with different concentrations of KB1 was similar to that obtained with DPN (Fig 2E vs. Fig 2A). This effect was completely counteracted by the ER antagonist ICI 182,780 (10^{-6} M) (Fig 2F).

These data demonstrate that ERβ activation is associated with antiproliferative activity in BLM melanoma cells, with 10^{-8} M being the most effective dose, as previously reported for different tumor cells [14,18,20,21,49–51]. A curve of the dose-response effect of ERβ agonists on cancer cell proliferation, similar to that here shown, has been previously reported for

cholangiocarcinoma and mesothelioma cells [14,20]. On the basis of these results, the concentration of 10^{-8} M was selected for the subsequent studies.

Activation of ERβ induces its cytoplasmic-to-nuclear translocation and transcriptional activity in BLM cells

Experiments were performed to verify whether, in BLM melanoma cells, ERβ might function according to the classical model of estrogen action [11]. By immunofluorescence analysis, we could show that, in BLM cells, most of the ERβ staining was confined in the cytoplasm (Fig 3A); treatment of melanoma cells (24 h) with both DPN and E₂ (10^{-8} M) induced its nuclear translocation (Fig 3A). Then, we analyzed the effects of ERβ ligands on the transcriptional activity of the receptor in melanoma cells. Fig 3B shows that treatment of BLM cells with either

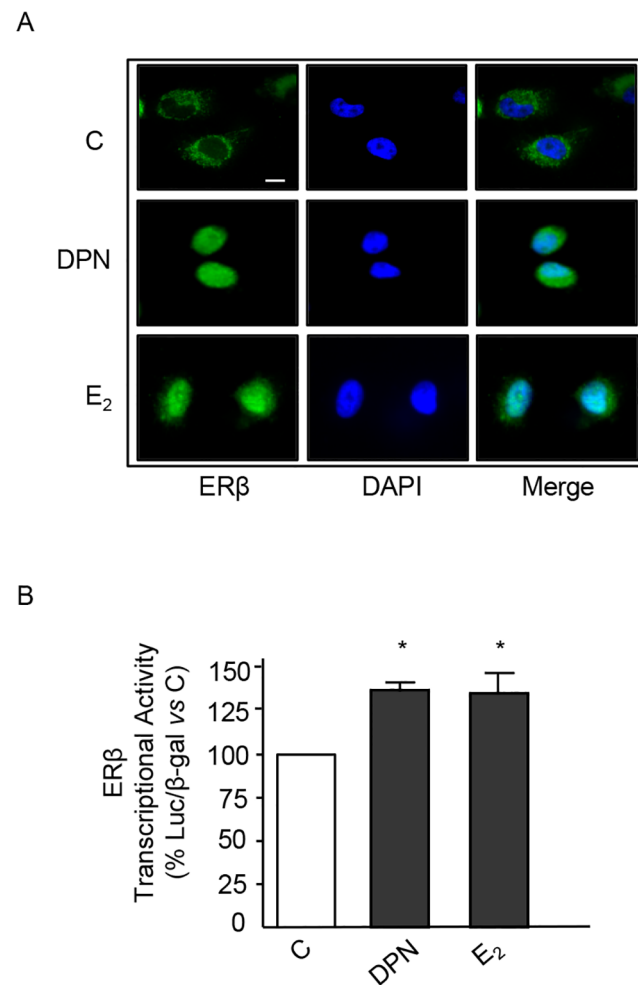


Fig 3. ERβ ligands trigger cytoplasmic-to-nuclear translocation of ERβ and induce its transcriptional activity in BLM melanoma cells. (A) Immunofluorescence assay of ERβ intracellular localization. In control BLM melanoma cells, ERβ is mainly localized at the cytoplasmic level. Treatment of the cells with either DPN or E₂ (10^{-8} M, for 24 h) induces ERβ translocation into the nucleus. A representative picture from three experiments done independently, which gave the same results, is reported. (B) The transcriptional activity of the ERβ protein in BLM cells was analyzed using the pVERE-tk-LUC plasmid (cotransfected with pCMVβ). The results were normalized for β-galactosidase activity. Treatment of the cells with either DPN or E₂ (10^{-8} M, for 24 h) significantly increased ERβ transcriptional activity. Each experimental group consisted of three replicates and each experiment was repeated three times. Data represent mean values ± SEM. **P*<0.05. C, controls.

doi:10.1371/journal.pone.0134396.g003

DPN or E₂ for 24 h significantly increased the transcriptional activation of the ERE-Luc reporter plasmid (normalized for β -galactosidase) indicating that, in BLM melanoma cells, ER β is associated with the classical transcriptional activity at the nuclear level.

ER β agonists affect the expression of cell cycle-related proteins in BLM cells

Estrogens have been shown to affect cancer cell growth through the regulation of proteins involved in cell cycle progression [52]. Experiments were performed to investigate whether ER β agonists might affect melanoma cell proliferation through alteration of the expression of cell cycle-related proteins. BLM cells were treated with the ER β agonist DPN (10⁻⁸ M) for different time intervals (24–72 h). By Western blot assay, we could demonstrate that treatment with DPN induced a significant reduction in the expression of G1 cyclins, such as cyclin D1 and D3 (at 72 h of treatment), and a significant increase in the expression of the CDK inhibitor p27 (at 48 h of treatment) (Fig 4A). On the other hand, the expression of the cyclin D partners CDK4 and CDK6 was not modified by the treatment; the CDK inhibitor p21 was found to be expressed at almost undetectable levels in BLM cells and its expression was not affected by DPN treatment (Fig 4A). Interestingly, DPN did not modify the expression of procaspase-3 as well as that of the cleaved (active) form of caspase-3 (Fig 4B). Taken together, these results indicate that ER β activation in melanoma cells decreases cell proliferation, through the modulation of the expression of proteins involved in the G1-S progression of the cell cycle, and that the apoptosis pathway is not involved in this activity.

ER β activation induces global DNA methylation reprogramming in BLM cells

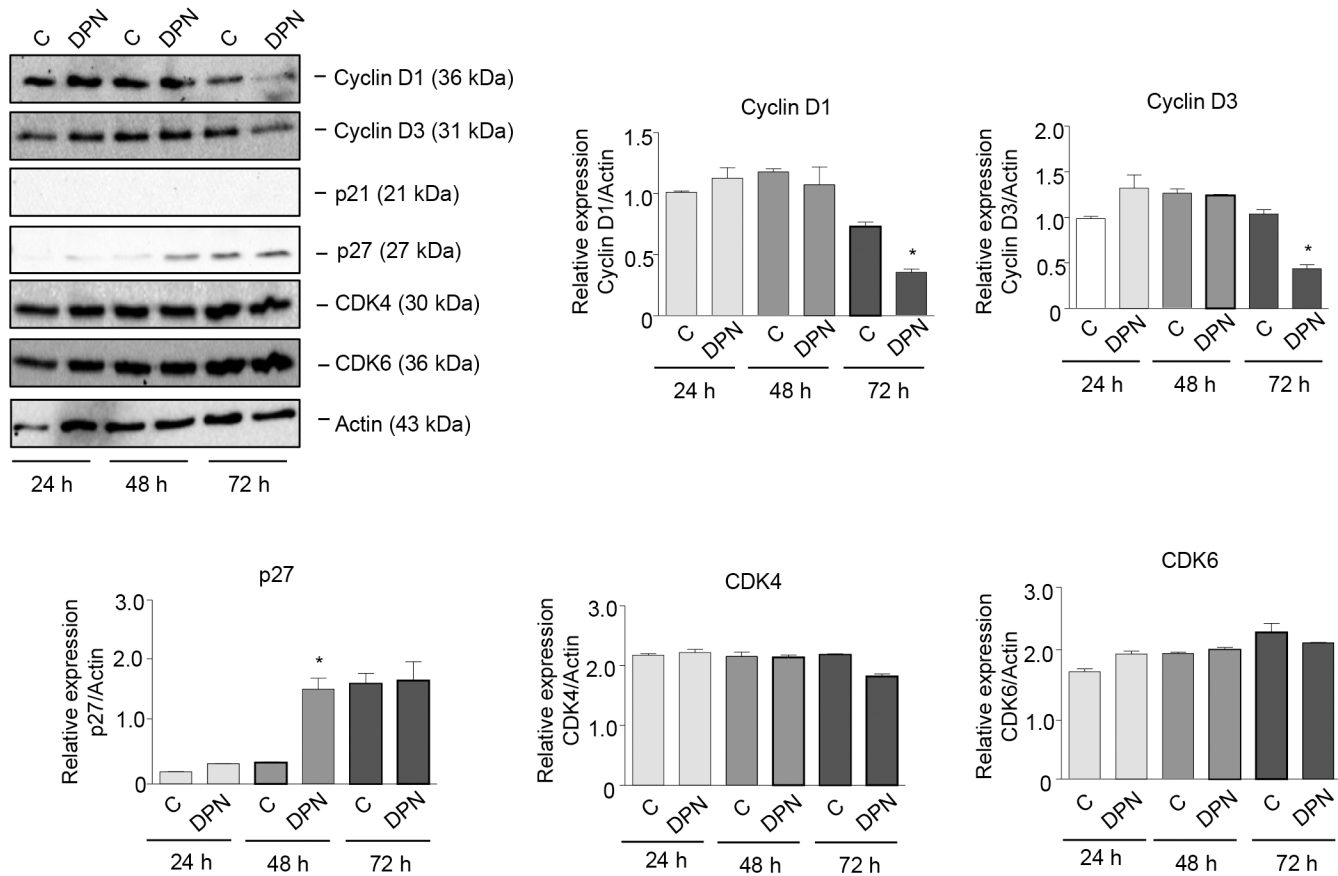
Experiments were first carried out to analyze the global DNA methylation status of human BLM melanoma cells when compared to that of human melanocytes. To this purpose, a restriction enzymatic assay, utilizing the two methylation sensitive restriction enzymes MspI and HpaII, was performed. These enzymes recognize the same tetranucleotide sequence (5'-CCGG-3') but display different sensitivity to DNA methylation. In particular, MspI does not cut when the external cytosine is methylated while HpaII does not cut when any of the two cytosines is methylated [39,40]. Fig 5A shows that BLM cells are globally hypomethylated when compared to human melanocytes (hMEL), when both MspI and HpaII restriction enzymes are utilized. These data confirm that melanoma cells are characterized by an aberrant global DNA hypomethylation, which is known to be associated with genome instability.

We then evaluated whether activation of ER β might affect the DNA methylation status of melanoma cells. BLM cells were treated with either DPN or E₂ (10⁻⁸ M) for 24 or 48 h; the DNA methylation status was analyzed as described above. Fig 5B shows that DPN significantly increased DNA methylation at 24 and 48 h of treatment, when the MspI restriction enzyme was utilized. On the other hand, E₂ significantly increased the methylation degree of CG-rich regions at 24 h of treatment, when both restriction enzymes were utilized. These data indicate that ER β activation reverts the DNA hypomethylation status in melanoma cells and suggest that different ER β ligands might increase the methylation of the different cytosines of the CG-rich regions (internal vs. external) in a specific way.

ER β agonists differentially affect the proliferation of melanoma cell lines

Based on the results obtained in BLM melanoma cells (expressing the ER β receptor subtype and harboring the NRAS mutation), further experiments were performed to assess the effects

A



B

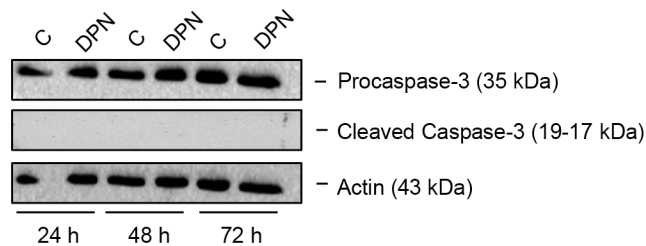


Fig 4. The specific ERβ ligand DPN affects the expression of cell cycle-related proteins in BLM melanoma cells. BLM cells were treated with DPN (10^{-8} M) for 24, 48, or 72 h. Western blot analysis was performed on whole cell extracts by using specific antibodies against cell cycle-related proteins, such as cyclin D1, cyclin D3, p21, p27, CDK4, CDK6 (A), procaspase-3 and cleaved caspase-3 (B). Actin expression was evaluated as a loading control. The treatment with DPN reduced the expression of cyclin D1 and cyclin D3 and increased that of p27, while the levels of cleaved (active) caspase-3 were not affected by the treatment. One representative of three different experiments, which gave similar results, is shown. A statistical evaluation has been performed on the densitometric analysis of the results obtained from the three Western blot experiments performed on cell cycle-related proteins (A).

doi:10.1371/journal.pone.0134396.g004

of ERβ activation on the proliferation of different melanoma cell lines, either lacking the expression of ERβ or expressing ERβ while harboring different oncogenic mutations (e.g., BRAF). Specifically, the effects of ERβ agonists were assessed on the proliferation of the following human melanoma cell lines: IGR-39 cells (expressing almost undetectable levels of ERβ),

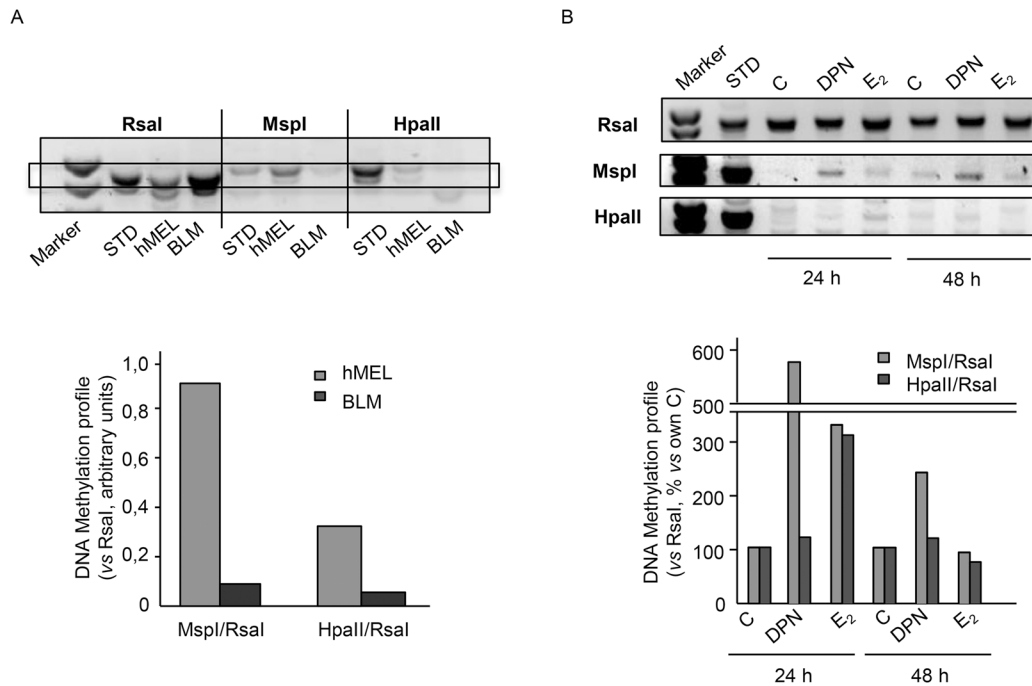


Fig 5. ERβ activation induces global DNA methylation reprogramming in BLM melanoma cells. (A) Preliminary experiments were carried out to analyze the global DNA methylation status of BLM cells when compared to that of human normal melanocytes (hMel). To this purpose, a restriction enzymatic assay was employed. For each DNA sample, two restriction digests were performed: one with RsaI and MspI, and one with RsaI and HpaII. RsaI is methylation insensitive, while MspI and HpaII are sensitive to DNA methylation and are able to cut only unmethylated restriction sites. The digests were then amplified by PCR. Data are expressed as the MspI/RsaI or HpaII/RsaI ratios relative to the intensity of the bands. BLM melanoma cells were found to be globally hypomethylated when compared to normal melanocytes, when both MspI and HpaII restriction enzymes were utilized. One representative of three different experiments, which gave similar results, is reported. (B) Experiments were performed to evaluate whether activation of ERβ might affect the global DNA hypomethylation status observed in melanoma cells. BLM cells were treated with either DPN or E₂ (10⁻⁸M) for 24 or 48 h; the DNA methylation status was then evaluated as described above. Both DPN (at 24 and 48 h) and E₂ (at 24 h) increased the DNA methylation profile of BLM cells, indicating that ERβ activation reverts the DNA hypomethylation status in melanoma cells. One representative of three different experiments, which gave similar results, is reported.

doi:10.1371/journal.pone.0134396.g005

A375 and WM1552 cells (expressing ERβ and harboring the BRAF V600E mutation), and WM115 cells (expressing ERβ and harboring the rare BRAF V600D mutation). IGR-39, A375 and WM1552 cells were treated with DPN (10⁻⁹–10⁻⁷ M) while WM115 cells were treated with DPN, E₂ and KB1 (10⁻¹⁰–10⁻⁷ M), as described for BLM cells. As expected, we found that DPN does not affect the proliferation of IGR-39 cells, lacking ERβ expression (Fig 6A). Unexpectedly, and interestingly, the ERβ agonist also failed to affect the growth of A375 and WM1552 melanoma cells, expressing the receptor subtype (Fig 6B and 6C). On the other hand, the proliferation of WM115 cells was reduced by the treatment with DPN, E₂ and KB1, with a dose-response curve similar to that observed in BLM cells (Fig 6D). Taken together, these results indicate that ERβ activation differentially affects the proliferation of melanoma cell lines. The reasons for these observations are still unclear; however, we might speculate that the efficacy of ERβ agonists in reducing melanoma growth might depend not only on the presence of the receptor but also on other particular features of each melanoma, such as the oncogenic mutation status (NRAS, BRAF) of the tumor.

Expression of ERβ isoforms in melanoma cell lines

So far, five alternatively spliced transcript variants of the ERβ gene have been described (ERβ1–5) in humans [53]. ERβ wild type, also referred to as ERβ1, is the main variant and ERβ2 and

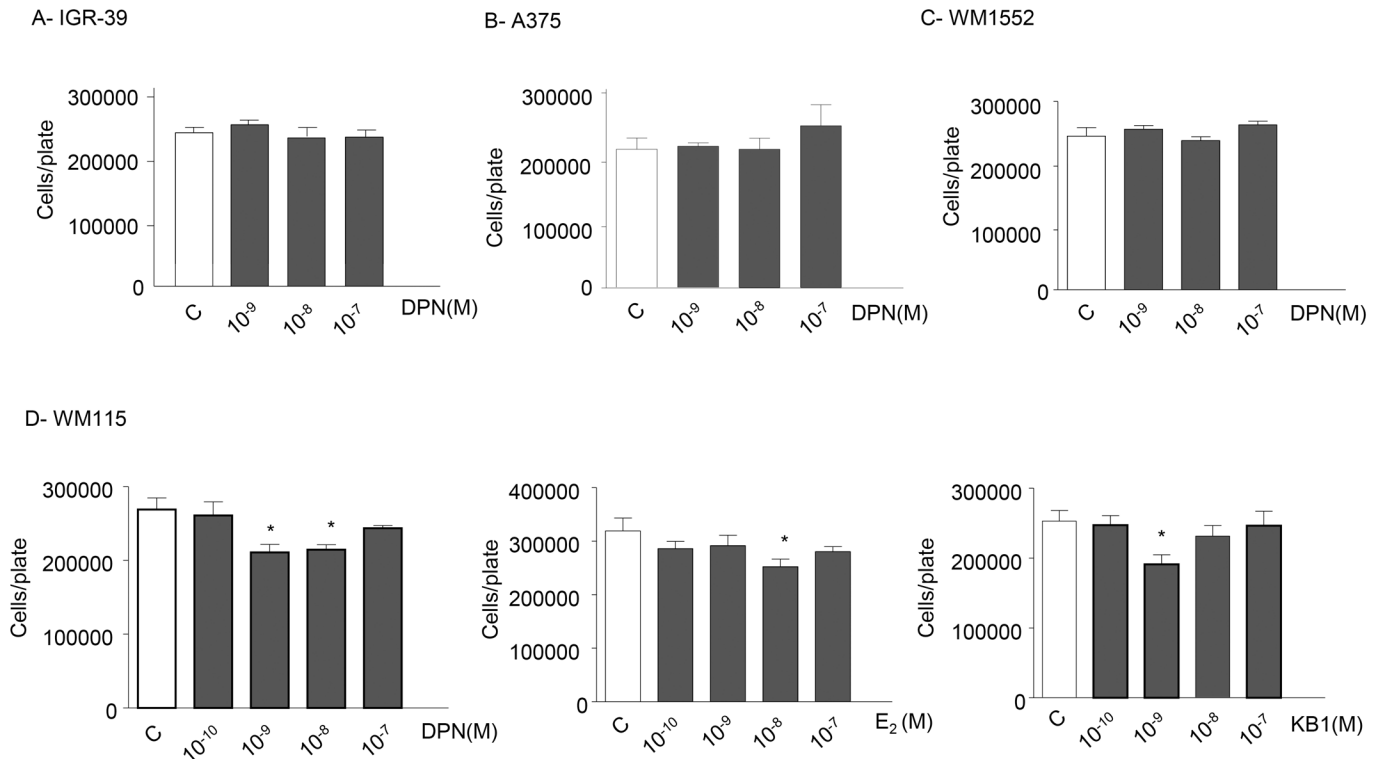


Fig 6. ERβ agonists differentially affect the proliferation of melanoma cell lines. (A) IGR-39, A375 and WM1552 melanoma cells were treated with DPN (10^{-9} – 10^{-7} M) every 48 h for three times. No effect on cell proliferation could be observed in any cell line tested. (B) WM115 cells were treated with DPN, E₂, or KB1 (10^{-10} – 10^{-7} M) every 48 h for three times. DPN was significantly effective in decreasing cell proliferation at the doses of 10^{-9} and 10^{-8} M. On the other hand, both E₂ and KB1 significantly reduced cell proliferation at the dose of 10^{-8} M. Each experimental group consisted of six replicates and each experiment was repeated three times. Results are given as cell number/plate. Data represent mean values ± SEM. * $P < 0.05$. C, controls.

doi:10.1371/journal.pone.0134396.g006

ERβ5 are the most studied splice variants [22]. The expression of these variants has been shown to be tissue-specific and to differentially modulate E₂ signaling [54].

As discussed above, the reasons for the differential effects of ERβ agonists on the proliferation of melanoma cell lines are still unclear. In addition to the proposed correlation with specific oncogenic mutations, these effects might also be related to the differential expression of ERβ isoforms in the various melanoma cell lines. Based on these observations, by quantitative RT-PCR we analyzed the expression of ERβ1, ERβ2, and ERβ5 in BLM, A375 and WM115 melanoma cell lines.

Fig 7 shows that the pattern of expression of the ERβ isoforms is similar in BLM and in WM115 cells, with ERβ1 and ERβ5 being expressed at similar levels and ERβ2 showing a higher level of expression. On the other hand, in A375 cells, both ERβ2 and 5 are expressed at higher levels than the ERβ1 isoform.

Discussion

Increasing evidence strongly suggests that ERβ plays a fundamental role in the development and progression of melanoma. In particular, the expression of ERβ was shown to inversely correlate with melanoma progression, being significantly lower in thick melanoma compared with thin melanoma tissues [23,26,27,55]. These observations point toward a potential role of ERβ as a protein associated with suppressive function in this tumor.

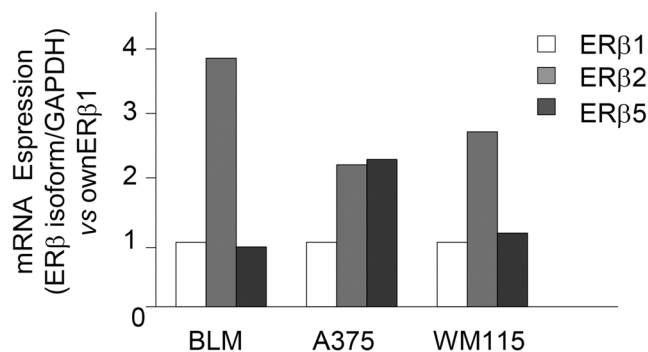


Fig 7. ER β isoforms (1, 2, and 5) are differentially expressed in melanoma cell lines. The relative expression of ER β 1, 2, and 5 isoforms was evaluated by quantitative RT-PCR, utilizing specific sets of primers. BLM and WM115 cells showed a similar expression of ER β 1 and 5, while expressing higher levels of ER β 2. On the other hand, a high expression of both ER β 2 and 5 isoforms (when compared to ER β 1) was observed in A375 cells. One representative of three different experiments, which gave similar results, is shown.

doi:10.1371/journal.pone.0134396.g007

In this study, we first investigated the expression of ER β in a panel of melanoma cell lines; we demonstrated that this estrogen receptor subtype (but not the ER α subtype) is expressed in most of these cell lines.

Then, we analyzed the effects and the possible mechanisms of action of ER β activation in BLM cells. We could demonstrate that activation of ER β , achieved by treating the cells with E₂ or ER β subtype-selective agonists (the classical ER β agonist, DPN, or more recently synthesized agonists, KB1, KB2, and KB4) significantly decreased BLM melanoma cell proliferation. This tumor cell inhibitory activity was found to be target protein specific since it was completely abrogated by cotreatment of the cells with the ER antagonist ICI 182,780.

In these experiments, the ER β agonists displayed bell-shaped responses with growth inhibition at low doses and opposite effect at high doses, as previously reported for cholangiocarcinoma and mesothelioma cells [14,20]. As underlined by Pinton and coworkers [14], this kind of response is not unusual for hormones. The term 'hormesis' has been widely used to describe a biphasic dose response phenomenon characterized by a low dose stressful stimulation and a high dose adaptive response that increases the resistance of the cell to evoked stress [56,57]. A possible explanation could be that cells may increase the production of cytoprotective and restorative proteins which can mediate their adaptive response to the stress induced by ER β agonists.

In BLM cells, activation of ER β induced its translocation from the cytoplasm into the nucleus and triggered its transcriptional activity. These data demonstrate that, in these melanoma cells expressing ER β , this receptor subtype exerts its repressive activity through the classical genomic action of steroid receptors at the nuclear level.

In this paper, we could also show that, in BLM melanoma cells, ER β agonists exert their antiproliferative activity through the modulation of cell cycle progressing factors (cyclin D1, cyclin D3, p27), without triggering the apoptosis pathway. These data suggest that ER β activation may inhibit melanoma growth by blocking the G1-S transition phase. Specifically, we could observe that the ER β agonist DPN significantly reduces cyclin D1 and cyclin D3 protein expression at 72 h of treatment, while increasing the expression of p27 at 48 h of treatment. Since ER β nuclear translocation and transcriptional activity occur 24 h after treatment of the cells with DPN, we hypothesize that these cell cycle-related proteins might not be directly regulated by ER β but, more likely, they might be the target of the activity of other direct ER β

downstream proteins. For instance, Wu and coworkers [58] have recently reported that, in bladder cancer cells, the ER β ligand resveratrol inhibits cell growth through decreased phosphorylation, nuclear translocation and transcription of STAT3, resulting in the downregulation of the expression of STAT3 downstream genes (cyclin D1, survivin, c-Myc and VEGF). Moreover, Nakamura and coworkers demonstrated that, in prostate cancer cells, activation of ER β induces cyclin D1 expression through increased expression of FOS and JUN; however, according to the data reported, the authors conclude that the interaction of ER β with the two transcription factors is not direct and likely involves early responsive genes which still need to be identified [59].

Taken together, our results obtained in BLM cells agree with the concept that the antitumor effect of ER β is associated with altered expression of proteins involved in the cell cycle progression [10,11]. In agreement with the data here reported, ER β agonists, as well as phytoestrogens (such as apigenin, resveratrol) have been shown to arrest breast cancer cell growth by causing a cell cycle arrest, through the regulation of cell cycle-related proteins, such as cyclin D1 and the CDK inhibitors p21 and p27 [60–62]; more recently, it has been reported that preferential ER β ligands reduce the expression of the antiapoptotic protein Bcl-2 to increase autophagy in hormone-resistant breast cancer cells [63]. In prostate cancer cells, ER β agonists inhibit the proliferation rate and the invasive behavior [64,65]. Moreover, ER β agonists impede prostate cancer epithelial-to-mesenchymal transition, by repressing VEGF-A expression [66]. ER β ligands were also shown to exert suppressive effects, through modulation of the expression of cell cycle progression proteins, on the growth of tumor cells classically unrelated to the reproductive system, such as colon [18], malignant pleural mesothelioma [14,19,36], lymphoma [21], glioma [67], and cholangiocarcinoma [20] cells. More recently, ER β agonists have been reported to prevent the development of UVB-induced nonmelanoma skin cancer in mice [68].

It is now well accepted that epigenetic mechanisms play a central role in tumor development. In particular, melanoma cells have been reported to present global DNA hypomethylation, contributing to the genomic instability of tumor cells, when compared to normal cells [28,30]. Thus, reversibility of these epigenetic modifications might represent an effective strategy of treatment for this aggressive form of cancer. In this study, we first confirmed that DNA is globally hypomethylated in human BLM melanoma cells when compared to normal human melanocytes. Then, we could show that treatment of BLM cells with both DPN and E₂ significantly increased global DNA methylation.

Taken together, our data demonstrate that, in BLM melanoma cells, ER β activation reduces cell growth, through the modulation of cell cycle related proteins, and that this antitumor activity is associated with the reversal of the global DNA hypomethylation status of these cancer cells.

In this paper, as expected, we could show that ER β agonists did not affect the proliferation of melanoma cells expressing almost undetectable levels of ER β (IGR-39).

On the other hand, surprisingly, we found that ER β agonists were also ineffective in reducing the proliferation of A375 and WM1552 melanoma cells, shown to express the estrogen receptor isoform. At present, the reason for these unexpected results is unclear. However, a possible explanation is that ER β agonists differentially affect the proliferation of various cell lines, expressing ER β , according to the cell line-specific oncogenic mutation status. Actually, NRAS and BRAF mutations are very frequently found in melanoma tumors; in particular, BLM cells are NRAS-mutant (a mutation present in about 30% of patients), while both A375 and WM1552 cells harbor the BRAF V600E mutation (the predominant BRAF mutation, occurring in about 50% of cases) [31,69,70]. In melanoma cells, NRAS mutations have been shown to be associated with increased activation of two main downstream signaling pathways: the PI3K/Akt and the MEK/ERK cascades [70,71]. On the other hand, in melanoma cells harboring

BRAF mutations, only the MEK/ERK pathway results to be overactivated. Interestingly, ER β agonists have been shown to exert their significant antitumor/proapoptotic effect through RAS inactivation and specific inhibition of its downstream PI3K/Akt pathway in different cancer cells [11,72,73]. Wang and coworkers [74] have recently reported that ER β expression inversely correlate with PTEN/PI3K/Akt pathway in triple-negative breast cancer. Moreover, in breast cancer cells, calycosin-induced ER β activation was associated with a decreased activity of the PI3K/Akt pathway, while the ERK1/2 cascade was not affected by the natural compound [72]. Based on our results as well as on these recently reported observations, we hypothesize that ER β agonists might effectively reduce the proliferation of melanoma cells harboring the NRAS mutation, through the specific inhibition of the activity of one of the two downstream signaling pathways: the PI3K/Akt cascade. On the other hand, ER β agonists will not reduce the growth of melanoma cells harboring the BRAF (V600E) mutation, which is associated with the overactivation of the MEK/ERK signaling pathway. Studies are ongoing in our laboratory to confirm this hypothesis.

Taken together, these data would suggest that, in melanoma patients harboring the NRAS mutation, ER β might represent a novel molecular target for personalized therapeutic strategies, based on ER β agonists, either alone or in combination with a specific inhibitor of the MEK pathway (*i.e.*, trametinib). Moreover, these results support the notion that not only the expression of ER β , but also the genetic analysis of the concurrent oncogenic mutations should be considered to predict the possible response of melanomas to ER β targeted therapeutic approaches.

In this paper we could also show that ER β agonists are able to decrease the proliferation of WM115 melanoma cells harboring the BRAF V600D mutation. However, no hypothesis can be suggested in this case, since this is considered a very rare BRAF mutation and very little is known about its associated intracellular signaling alterations; it has actually been reported that, in melanoma cells, BRAF mutations can be associated to different intracellular pathways, in addition to the MEK/ERK cascade [75]. Moreover, whether BRAF inhibitors might have the same effectiveness in patients with this rare BRAF mutation still has to be evaluated [76].

The differential effect of ER β agonists on the proliferation of the various melanoma cell lines here reported might also be associated with the relative expression of the ER β isoforms in each cell line. We found that BLM and WM115 cells show a similar pattern of expression of the isoforms with similar levels of ER β 1 and ER β 5, but higher expression of ER β 2. On the other hand, in A375 cells both ER β 2 and ER β 5 are expressed at higher levels than ER β 1. The possible correlation between the expression of the ER β isoforms and the differential effects of ER β agonists on melanoma cells is at present unclear. ER β isoforms have been shown to be co-expressed in various types of tumors, (including breast, ovarian, endometrial, prostate, colon and lung cancers); however, conflicting results have been so far reported on the potential collective effect of their co-existence [41,43,77–81]. In agreement with Hapangama and coworkers [82], we believe that the lack of commercially available specific antibodies for the different receptor isoforms represents a major obstacle in the investigation and clarification of their functions. Based on this observation, most of the functional data so far reported in the literature are only related to ER β (ER β 1), with little reference to the other alternatively spliced variants.

In conclusion, the data presented in this paper demonstrate that ER β subtype is expressed in a panel of human melanoma cell lines (BLM, WM115, A375, WM1552). In BLM cells, as well as in WM115 cells, activation of ER β is associated with a significant and specific antiproliferative effect. In particular, in BLM cells, this antitumor activity is associated with the modulation of the expression of G1-S cell cycle-related proteins and with the reprogramming of global DNA methylation. On the other hand, ER β agonists failed to affect the proliferation of A375 and WM1552 cell lines. This differential effect of ER β agonists on the growth of the different

melanoma cell lines might be related either to the specific oncogenic mutational status (NRAS, BRAF) or to the relative expression of receptor isoforms in each cell line.

These data confirm that melanoma is a very heterogeneous tumor and support the concept that genetic profiling is mandatory for the development of novel and effective personalized therapeutic strategies for melanoma patients.

Acknowledgments

The authors thank Dr. S. Nilsson (Karo Bio AB, Novum, SE-141 57 Huddinge, Sweden) for kindly providing KB1, KB2, and KB4 compounds.

Author Contributions

Conceived and designed the experiments: MM LC RMM MMM PL. Performed the experiments: MM LC RMM MMM. Analyzed the data: MM LC RMM MMM. Wrote the paper: PL.

References

1. Siegel R, Ma J, Zou Z, Jemal A. Cancer statistics, 2014. *CA Cancer J Clin.* 2014; 64: 9–29. doi: [10.3322/caac.21208](https://doi.org/10.3322/caac.21208) PMID: [24399786](https://pubmed.ncbi.nlm.nih.gov/24399786/)
2. DeSantis CE, Lin CC, Mariotto AB, Siegel RL, Stein KD, Kramer JL, et al. Cancer treatment and survivorship statistics, 2014. *CA Cancer J Clin.* 2014; 64: 252–271. doi: [10.3322/caac.21235](https://doi.org/10.3322/caac.21235) PMID: [24890451](https://pubmed.ncbi.nlm.nih.gov/24890451/)
3. Jilaveanu LB, Aziz SA, Kluger HM. Chemotherapy and biologic therapies for melanoma: do they work? *Clin Dermatol.* 2009; 27: 614–625. doi: [10.1016/j.clindermatol.2008.09.020](https://doi.org/10.1016/j.clindermatol.2008.09.020) PMID: [19880049](https://pubmed.ncbi.nlm.nih.gov/19880049/)
4. Pasquali S, Spillane A. Contemporary controversies and perspectives in the staging and treatment of patients with lymph node metastasis from melanoma, especially with regards positive sentinel lymph node biopsy. *Cancer Treat Rev.* 2014; 40: 893–899. doi: [10.1016/j.ctrv.2014.06.008](https://doi.org/10.1016/j.ctrv.2014.06.008) PMID: [25023758](https://pubmed.ncbi.nlm.nih.gov/25023758/)
5. Leung AM, Lee AF, Ozao-Choy J, Ramos RI, Hamid O, O'Day SJ, et al. Clinical benefit from ipilimumab therapy in melanoma patients may be associated with serum CTLA4 levels. *Front Oncol.* 2014; 4: 110. doi: [10.3389/fonc.2014.00110](https://doi.org/10.3389/fonc.2014.00110) PMID: [24904825](https://pubmed.ncbi.nlm.nih.gov/24904825/)
6. Voskoboinik M, Arkenau HT. Combination therapies for the treatment of advanced melanoma: a review of current evidence. *Biochem Res Int.* 2014; 2014: 307059. doi: [10.1155/2014/307059](https://doi.org/10.1155/2014/307059) PMID: [24693430](https://pubmed.ncbi.nlm.nih.gov/24693430/)
7. Nilsson S, Gustafsson J-Å. Estrogen receptors: therapies targeted to receptor subtypes. *Clin Pharmacol Ther.* 2011; 89: 44–55. doi: [10.1038/clpt.2010.226](https://doi.org/10.1038/clpt.2010.226) PMID: [21124311](https://pubmed.ncbi.nlm.nih.gov/21124311/)
8. Nilsson S, Koehler KF, Gustafsson J-Å. Development of subtype-selective oestrogen receptor-based therapeutics. *Nat Rev Drug Discov.* 2011; 10: 778–792. doi: [10.1038/nrd3551](https://doi.org/10.1038/nrd3551) PMID: [21921919](https://pubmed.ncbi.nlm.nih.gov/21921919/)
9. Dahlman-Wright K, Cavailles V, Fuqua SA, Jordan VC, Katzenellenbogen JA, Korach KS, et al. International Union of Pharmacology. LXIV. Estrogen receptors. *Pharmacol Rev.* 2006; 58: 773–781. PMID: [17132854](https://pubmed.ncbi.nlm.nih.gov/17132854/)
10. Thomas C, Gustafsson J-Å. The different roles of ER subtypes in cancer biology and therapy. *Nat Rev Cancer.* 2011; 11: 597–608. doi: [10.1038/nrc3093](https://doi.org/10.1038/nrc3093) PMID: [21779010](https://pubmed.ncbi.nlm.nih.gov/21779010/)
11. Dey P, Barros RP, Warner M, Ström A, Gustafsson J-Å. Insight into the mechanisms of action of estrogen receptor beta in the breast, prostate, colon, and CNS. *J Mol Endocrinol.* 2013; 51: T61–T74. doi: [10.1530/JME-13-0150](https://doi.org/10.1530/JME-13-0150) PMID: [24031087](https://pubmed.ncbi.nlm.nih.gov/24031087/)
12. Warner M, Gustafsson J-Å. The role of estrogen receptor beta (ERbeta) in malignant diseases—a new potential target for antiproliferative drugs in prevention and treatment of cancer. *Biochem Biophys Res Commun.* 2010; 396: 63–66. doi: [10.1016/j.bbrc.2010.02.144](https://doi.org/10.1016/j.bbrc.2010.02.144) PMID: [20494112](https://pubmed.ncbi.nlm.nih.gov/20494112/)
13. Yang GS, Wang Y, Wang P, Chen ZD. Expression of oestrogen receptor-alpha and oestrogen receptor-beta in prostate cancer. *Chin Med J (Engl).* 2007; 120: 1611–1615.
14. Pinton G, Manente AG, Daga A, Cilli M, Rinaldi M, Nilsson S, et al. Agonist activation of estrogen receptor beta (ERbeta) sensitizes malignant pleural mesothelioma cells to cisplatin cytotoxicity. *Mol Cancer.* 2014; 13: 227. doi: [10.1186/1476-4598-13-227](https://doi.org/10.1186/1476-4598-13-227) PMID: [25277603](https://pubmed.ncbi.nlm.nih.gov/25277603/)
15. Leung YK, Gao Y, Lau KM, Zhang X, Ho SM. ICI 182,780-regulated gene expression in DU145 prostate cancer cells is mediated by estrogen-receptor β /NF κ B crosstalk. *Neoplasia.* 2006; 8: 242–249. PMID: [16756716](https://pubmed.ncbi.nlm.nih.gov/16756716/)

16. McPherson SJ, Hussain S, Balanathan P, Hedwards SL, Niranjn B, Grant M, et al. Estrogen receptor-beta activated apoptosis in benign hyperplasia and cancer of the prostate is androgen independent and TNFalpha mediated. *Proc Natl Acad Sci U S A*. 2010; 107: 3123–3128. doi: [10.1073/pnas.0905524107](https://doi.org/10.1073/pnas.0905524107) PMID: [20133657](https://pubmed.ncbi.nlm.nih.gov/20133657/)
17. Leung YK, Lee MT, Lam HM, Tarapore P, Ho SM. Estrogen receptor-beta and breast cancer: translating biology into clinical practice. *Steroids*. 2012; 77: 727–737. doi: [10.1016/j.steroids.2012.03.008](https://doi.org/10.1016/j.steroids.2012.03.008) PMID: [22465878](https://pubmed.ncbi.nlm.nih.gov/22465878/)
18. Hartman J, Edvardsson K, Lindberg K, Zhao C, Williams C, Ström A, et al. Tumor repressive functions of estrogen receptor beta in SW480 colon cancer cells. *Cancer Res*. 2009; 69: 6100–6106. doi: [10.1158/0008-5472.CAN-09-0506](https://doi.org/10.1158/0008-5472.CAN-09-0506) PMID: [19602591](https://pubmed.ncbi.nlm.nih.gov/19602591/)
19. Pinton G, Thomas W, Bellini P, Manente AG, Favoni RE, Harvey BJ, et al. Estrogen receptor beta exerts tumor repressive functions in human malignant pleural mesothelioma via EGFR inactivation and affects response to gefitinib. *PLoS One*. 2010; 5: e14110. doi: [10.1371/journal.pone.0014110](https://doi.org/10.1371/journal.pone.0014110) PMID: [21124760](https://pubmed.ncbi.nlm.nih.gov/21124760/)
20. Marzioni M, Torrice A, Saccomanno S, Rychlicki C, Agostinelli L, Pierantonelli I, et al. An oestrogen receptor beta-selective agonist exerts anti-neoplastic effects in experimental intrahepatic cholangiocarcinoma. *Dig Liver Dis*. 2012; 44: 134–142. doi: [10.1016/j.dld.2011.06.014](https://doi.org/10.1016/j.dld.2011.06.014) PMID: [21782536](https://pubmed.ncbi.nlm.nih.gov/21782536/)
21. Yakimchuk K, Hasni MS, Guan J, Chao MP, Sander B, Okret S. Inhibition of lymphoma vascularization and dissemination by estrogen receptor beta agonists. *Blood*. 2014; 123: 2054–2061. doi: [10.1182/blood-2013-07-517292](https://doi.org/10.1182/blood-2013-07-517292) PMID: [24470591](https://pubmed.ncbi.nlm.nih.gov/24470591/)
22. Leung YK, Mak P, Hassan S, Ho SM. Estrogen receptor (ER)- β isoforms: a key to understanding ER- β signaling. *Proc Natl Acad Sci USA*. 2006; 103: 13162–13167. PMID: [16938840](https://pubmed.ncbi.nlm.nih.gov/16938840/)
23. Schmidt AN, Nanney LB, Boyd AS, King LE Jr., Ellis DL. Oestrogen receptor-beta expression in melanocytic lesions. *Exp Dermatol*. 2006; 15: 971–980. PMID: [17083364](https://pubmed.ncbi.nlm.nih.gov/17083364/)
24. Scoggins CR, Ross MI, Reintgen DS, Noyes RD, Goydos JS, Beitsch PD, et al. Gender-related differences in outcome for melanoma patients. *Ann Surg*. 2006; 243: 693–698; discussion 698–700. PMID: [16633005](https://pubmed.ncbi.nlm.nih.gov/16633005/)
25. Joosse A, de Vries E, Eckel R, Nijsten T, Eggermont AM, Holzel D, et al. Gender differences in melanoma survival: female patients have a decreased risk of metastasis. *J Invest Dermatol*. 2011; 131: 719–726. doi: [10.1038/jid.2010.354](https://doi.org/10.1038/jid.2010.354) PMID: [21150923](https://pubmed.ncbi.nlm.nih.gov/21150923/)
26. de Giorgi V, Gori A, Gandini S, Papi F, Grazzini M, Rossari S, et al. Oestrogen receptor beta and melanoma: a comparative study. *Br J Dermatol*. 2013; 168: 513–519. doi: [10.1111/bjd.12056](https://doi.org/10.1111/bjd.12056) PMID: [23013061](https://pubmed.ncbi.nlm.nih.gov/23013061/)
27. de Giorgi V, Gori A, Grazzini M, Rossari S, Scarfi F, Corciova S, et al. Estrogens, estrogen receptors and melanoma. *Expert Rev Anticancer Ther*. 2011; 11: 739–747. doi: [10.1586/era.11.42](https://doi.org/10.1586/era.11.42) PMID: [21554049](https://pubmed.ncbi.nlm.nih.gov/21554049/)
28. Ecsedi SI, Hernandez-Vargas H, Lima SC, Herceg Z, Adany R, Balazs M. Transposable hypomethylation is associated with metastatic capacity of primary melanomas. *Int J Clin Exp Pathol*. 2013; 6: 2943–2948. PMID: [24294382](https://pubmed.ncbi.nlm.nih.gov/24294382/)
29. Besaratinia A, Tommasi S. Epigenetics of human melanoma: promises and challenges. *J Mol Cell Biol*. 2014; 6: 356–367. doi: [10.1093/jmcb/mju027](https://doi.org/10.1093/jmcb/mju027) PMID: [24895357](https://pubmed.ncbi.nlm.nih.gov/24895357/)
30. Ecsedi S, Hernandez-Vargas H, Lima SC, Vizkeleti L, Toth R, Lazar V, et al. DNA methylation characteristics of primary melanomas with distinct biological behaviour. *PLoS One*. 2014; 9: e96612. doi: [10.1371/journal.pone.0096612](https://doi.org/10.1371/journal.pone.0096612) PMID: [24832207](https://pubmed.ncbi.nlm.nih.gov/24832207/)
31. Van Muijen GN, Cornelissen LM, Jansen CF, Figdor CG, Johnson JP, Brocker EB, et al. Antigen expression of metastasizing and non-metastasizing human melanoma cells xenografted into nude mice. *Clin Exp Metastasis*. 1991; 9: 259–272. PMID: [2060184](https://pubmed.ncbi.nlm.nih.gov/2060184/)
32. Moretti RM, Montagnani Marelli M, Van Groeninghen JC, Limonta P. Locally expressed LHRH receptors mediate the oncostatic and antimetastatic activity of LHRH agonists on melanoma cells. *J Clin Endocrinol Metab*. 2002; 87: 3791–3797. PMID: [12161512](https://pubmed.ncbi.nlm.nih.gov/12161512/)
33. Moretti RM, Mai S, Montagnani Marelli M, Bani MR, Ghilardi C, Giavazzi R, et al. Dual targeting of tumor and endothelial cells by gonadotropin-releasing hormone agonists to reduce melanoma angiogenesis. *Endocrinology*. 2010; 151: 4643–4653. doi: [10.1210/en.2010-0163](https://doi.org/10.1210/en.2010-0163) PMID: [20685877](https://pubmed.ncbi.nlm.nih.gov/20685877/)
34. Satyamoorthy K, DeJesus E, Linnenbach AJ, Kraj B, Kornreich DL, Rendle S, et al. Melanoma cell lines from different stages of progression and their biological and molecular analyses. *Melanoma Res*. 1997; 7 Suppl 2: S35–42. PMID: [9578415](https://pubmed.ncbi.nlm.nih.gov/9578415/)
35. Moschetta M, Pretto F, Berndt A, Galler K, Richter P, Bassi A, et al. Paclitaxel enhances therapeutic efficacy of the F8-IL2 immunocytokine to EDA-fibronectin-positive metastatic human melanoma xenografts. *Cancer Res*. 2012; 72: 1814–1824. doi: [10.1158/0008-5472.CAN-11-1919](https://doi.org/10.1158/0008-5472.CAN-11-1919) PMID: [22392081](https://pubmed.ncbi.nlm.nih.gov/22392081/)

36. Manente AG, Valenti D, Pinton G, Jithesh PV, Daga A, Rossi L, et al. Estrogen receptor beta activation impairs mitochondrial oxidative metabolism and affects malignant mesothelioma cell growth in vitro and in vivo. *Oncogenesis*. 2013; 2: e72. doi: [10.1038/oncsis.2013.32](https://doi.org/10.1038/oncsis.2013.32) PMID: [24061575](https://pubmed.ncbi.nlm.nih.gov/24061575/)
37. Barkhem T, Carlsson B, Nilsson Y, Enmark E, Gustafsson J-Å, Nilsson S. Differential response of estrogen receptor alpha and estrogen receptor beta to partial estrogen agonists/antagonists. *Mol Pharmacol*. 1998; 54: 105–112. PMID: [9658195](https://pubmed.ncbi.nlm.nih.gov/9658195/)
38. Martini PG, Delage-Mourroux R, Kraichely DM, Katzenellenbogen BS. Prothymosin alpha selectively enhances estrogen receptor transcriptional activity by interacting with a repressor of estrogen receptor activity. *Mol Cell Biol*. 2000; 20: 6224–6232. PMID: [10938099](https://pubmed.ncbi.nlm.nih.gov/10938099/)
39. Xie Y, Liu J, Benbrahim-Tallaa L, Ward JM, Logsdon D, Diwan BA, et al. Aberrant DNA methylation and gene expression in livers of newborn mice transplacentally exposed to a hepatocarcinogenic dose of inorganic arsenic. *Toxicology*. 2007; 236: 7–15. PMID: [17451858](https://pubmed.ncbi.nlm.nih.gov/17451858/)
40. Lewies A, Van Dyk E, Wentzel JF, Pretorius PJ. Using a medium-throughput comet assay to evaluate the global DNA methylation status of single cells. *Front Genet*. 2014; 5: 215. doi: [10.3389/fgene.2014.00215](https://doi.org/10.3389/fgene.2014.00215) PMID: [25071840](https://pubmed.ncbi.nlm.nih.gov/25071840/)
41. Collins F, MacPherson S, Brown P, Bombail V, Williams ARW, Anderson RA, et al. Expression of oestrogen receptors, ER α , ER β , and ER β variants, in endometrial cancers and evidence that prostaglandin F may play a role in regulating expression of ER α . *BMC Cancer*. 2009; 9: 330. doi: [10.1186/1471-2407-9-330](https://doi.org/10.1186/1471-2407-9-330) PMID: [19758455](https://pubmed.ncbi.nlm.nih.gov/19758455/)
42. Casati L, Celotti F, Negri-Cesi P, Sacchi MC, Castano P, Colciago A. Platelet derived growth factor (PDGF) contained in Platelet Rich Plasma (PRP) stimulates migration of osteoblasts by reorganizing actin cytoskeleton. *Cell Adh Migr*. 2014; 8: 595–602. doi: [10.4161/19336918.2014.972785](https://doi.org/10.4161/19336918.2014.972785) PMID: [25482626](https://pubmed.ncbi.nlm.nih.gov/25482626/)
43. Dey P, Jonsson P, Hartman J, Williams C, Ström A, Gustafsson J-Å. Estrogen receptors β 1 and β 2 have opposing roles in regulating proliferation and bone metastasis genes in the prostate cancer cell line PC3. *Mol Endocrinol*. 2012; 26:1991–2003. doi: [10.1210/me.2012.1227](https://doi.org/10.1210/me.2012.1227) PMID: [23028063](https://pubmed.ncbi.nlm.nih.gov/23028063/)
44. Dey P, Ström A, Gustafsson J-Å. Estrogen receptor β upregulates FOXO3a and causes induction of apoptosis through PUMA in prostate cancer. *Oncogene*. 2014; 33: 4213–4225. doi: [10.1038/onc.2013.384](https://doi.org/10.1038/onc.2013.384) PMID: [24077289](https://pubmed.ncbi.nlm.nih.gov/24077289/)
45. Zhao C, Putnik M, Gustafsson J-Å, Dahlman-Wright K. Microarray analysis of altered gene expression in ER β overexpressing HEK293 cells. *Endocrine*. 2009; 36: 224–232. doi: [10.1007/s12020-009-9233-8](https://doi.org/10.1007/s12020-009-9233-8) PMID: [19680825](https://pubmed.ncbi.nlm.nih.gov/19680825/)
46. Charn TH, Liu ET-B, Chang EC, Lee YK, Katzenellenbogen JA, Katzenellenbogen BS. Genome-wide dynamics of chromatin binding of estrogen receptors α and β : mutual restriction and competitive site selection. *Mol Endocrinol*. 2010; 24: 47–59. doi: [10.1210/me.2009-0252](https://doi.org/10.1210/me.2009-0252) PMID: [19897598](https://pubmed.ncbi.nlm.nih.gov/19897598/)
47. Rizza P, Barone I, Zito D, Giordano F, Lanzino M, De Amicis F, et al. Estrogen receptor beta as a novel target of androgen receptor action in breast cancer cell lines. *Breast Cancer Res*. 2014; 16: 21.
48. Zhou JH, Kim KB, Myers JN, Fox PS, Ning J, Bassett RL, et al. Immunohistochemical expression of hormone receptors in melanoma of pregnant women, non-pregnant women and men. *Am J Dermatopathol*. 2014; 36: 74–79. doi: [10.1097/DAD.0b013e3182914c64](https://doi.org/10.1097/DAD.0b013e3182914c64) PMID: [23812018](https://pubmed.ncbi.nlm.nih.gov/23812018/)
49. Paruthiyil S, Parmar H, Kerekatte V, Cunha GR, Firestone GL, Leitman DC. Estrogen receptor beta inhibits human breast cancer cell proliferation and tumor formation by causing a G2 cell cycle arrest. *Cancer Res*. 2004; 64: 423–428. PMID: [14729654](https://pubmed.ncbi.nlm.nih.gov/14729654/)
50. Ström A, Hartman J, Foster JS, Kietz S, Wimalasena J, Gustafsson J-Å. Estrogen receptor beta inhibits 17 β -estradiol-stimulated proliferation of the breast cancer cell line T47D. *Proc Natl Acad Sci U S A*. 2004; 101: 1566–1571. PMID: [14745018](https://pubmed.ncbi.nlm.nih.gov/14745018/)
51. Docquier A, Garcia A, Savatier J, Boulahtouf A, Bonnet S, Bellet V, et al. Negative regulation of estrogen signaling by ERbeta and RIP140 in ovarian cancer cells. *Mol Endocrinol*. 2013; 27: 1429–1441. doi: [10.1210/me.2012-1351](https://doi.org/10.1210/me.2012-1351) PMID: [23885094](https://pubmed.ncbi.nlm.nih.gov/23885094/)
52. Foster JS, Henley DC, Ahamed S, Wimalasena J. Estrogens and cell-cycle regulation in breast cancer. *Trends Endocrinol Metab*. 2001; 12: 320–327. PMID: [11504672](https://pubmed.ncbi.nlm.nih.gov/11504672/)
53. Moore JT, Mckee DD, Slentz-Kesler K, Moore LB, Jones SA, Horne EL, et al. Cloning and characterization of human estrogen receptor beta isoforms. *Biochem Biophys Res Commun*. 1998; 247: 75–78. PMID: [9636657](https://pubmed.ncbi.nlm.nih.gov/9636657/)
54. Ramsey TL, Risinger KE, Jernigan SC, Mattingly KA, Klinge CM. Estrogen receptor beta isoforms exhibit differences in ligand-activated transcriptional activity in an estrogen response element sequence-dependent manner. *Endocrinology*. 2004; 145: 149–160. PMID: [14500565](https://pubmed.ncbi.nlm.nih.gov/14500565/)
55. de Giorgi V, Mavilia C, Massi D, Gozzini A, Aragona P, Tanini A, et al. Estrogen receptor expression in cutaneous melanoma: a real-time reverse transcriptase-polymerase chain reaction and

- immunohistochemical study. *Arch Dermatol.* 2009; 145: 30–36. doi: [10.1001/archdermatol.2008.537](https://doi.org/10.1001/archdermatol.2008.537) PMID: [19153340](https://pubmed.ncbi.nlm.nih.gov/19153340/)
56. Calabrese EJ. Cancer biology and hormesis: human tumor cell lines commonly display hormetic (biphasic) dose response. *Crit Rev Toxicol* 2005; 35: 463–582. PMID: [16422392](https://pubmed.ncbi.nlm.nih.gov/16422392/)
 57. Calabrese EJ. Biphasic dose responses in biology, toxicology and medicine accounting for their generalizability and quantitative features. *Environ Pollut.* 2013; 182: 452–460. doi: [10.1016/j.envpol.2013.07.046](https://doi.org/10.1016/j.envpol.2013.07.046) PMID: [23992683](https://pubmed.ncbi.nlm.nih.gov/23992683/)
 58. Wu ML, Li H, Yu LJ, Chen XY, Kong QY, Song X, et al. Short-term resveratrol exposure causes in vitro and in vivo growth inhibition and apoptosis of bladder cancer cells. *PLoS One.* 2014; 9: e89806. doi: [10.1371/journal.pone.0089806](https://doi.org/10.1371/journal.pone.0089806) PMID: [24587049](https://pubmed.ncbi.nlm.nih.gov/24587049/)
 59. Nakamura Y, Felizola SJ, Kurotaki Y, Fujishima F, McNamara KM, Suzuki T, et al. Cyclin D1 (CCND1) expression is involved in estrogen receptor beta (ERbeta) in human prostate cancer. *Prostate.* 2013; 73: 590–595. doi: [10.1002/pros.22599](https://doi.org/10.1002/pros.22599) PMID: [23060014](https://pubmed.ncbi.nlm.nih.gov/23060014/)
 60. Nair HB, Kirma NB, Ganapathy M, Vadlamudi RK, Tekmal RR. Estrogen receptor-beta activation in combination with letrozole blocks the growth of breast cancer tumors resistant to letrozole therapy. *Steroids.* 2011; 76: 792–796. doi: [10.1016/j.steroids.2011.02.038](https://doi.org/10.1016/j.steroids.2011.02.038) PMID: [21477609](https://pubmed.ncbi.nlm.nih.gov/21477609/)
 61. Bilal I, Chowdhury A, Davidson J, Whitehead S. Phytoestrogens and prevention of breast cancer: The contentious debate. *World J Clin Oncol.* 2014; 5: 705–712. doi: [10.5306/wjco.v5.i4.705](https://doi.org/10.5306/wjco.v5.i4.705) PMID: [25302172](https://pubmed.ncbi.nlm.nih.gov/25302172/)
 62. Harrison ME, Power Coombs MR, Delaney LM, Hoskin DW. Exposure of breast cancer cells to a subcytotoxic dose of apigenin causes growth inhibition, oxidative stress, and hypophosphorylation of Akt. *Exp Mol Pathol.* 2014; 97: 211–217. doi: [10.1016/j.yexmp.2014.07.006](https://doi.org/10.1016/j.yexmp.2014.07.006) PMID: [25019465](https://pubmed.ncbi.nlm.nih.gov/25019465/)
 63. Ruddy SC, Lau R, Cabrita MA, McGregor C, McKay BC, Murphy LC, et al. Preferential estrogen receptor beta ligands reduce Bcl-2 expression in hormone-resistant breast cancer cells to increase autophagy. *Mol Cancer Ther.* 2014; 13: 1882–1893. doi: [10.1158/1535-7163.MCT-13-1066](https://doi.org/10.1158/1535-7163.MCT-13-1066) PMID: [24785256](https://pubmed.ncbi.nlm.nih.gov/24785256/)
 64. Dondi D, Piccolella M, Biserni A, Della Torre S, Ramachandran B, Locatelli A, et al. Estrogen receptor beta and the progression of prostate cancer: role of 5alpha-androstane-3beta,17beta-diol. *Endocr-Relat Cancer.* 2010; 17: 731–742. doi: [10.1677/ERC-10-0032](https://doi.org/10.1677/ERC-10-0032) PMID: [20562232](https://pubmed.ncbi.nlm.nih.gov/20562232/)
 65. Piccolella M, Crippa V, Messi E, Tetel MJ, Poletti A. Modulators of estrogen receptor inhibit proliferation and migration of prostate cancer cells. *Pharmacol Res.* 2014; 79: 13–20. doi: [10.1016/j.phrs.2013.10.002](https://doi.org/10.1016/j.phrs.2013.10.002) PMID: [24184124](https://pubmed.ncbi.nlm.nih.gov/24184124/)
 66. Mak P, Leav I, Pursell B, Bae D, Yang X, Taglienti CA, et al. ERbeta impedes prostate cancer EMT by destabilizing HIF-1alpha and inhibiting VEGF-mediated snail nuclear localization: implications for Gleason grading. *Cancer Cell.* 2010; 17: 319–332. doi: [10.1016/j.ccr.2010.02.030](https://doi.org/10.1016/j.ccr.2010.02.030) PMID: [20385358](https://pubmed.ncbi.nlm.nih.gov/20385358/)
 67. Sareddy GR, Nair BC, Gonugunta VK, Zhang QG, Brenner A, Brann DW, et al. Therapeutic significance of estrogen receptor beta agonists in gliomas. *Mol Cancer Ther.* 2012; 11: 1174–1182. doi: [10.1158/1535-7163.MCT-11-0960](https://doi.org/10.1158/1535-7163.MCT-11-0960) PMID: [22442308](https://pubmed.ncbi.nlm.nih.gov/22442308/)
 68. Chaudhary SC, Singh T, Talwelkar SS, Srivastava RK, Arumugam A, Weng Z, et al. Erb-041, an estrogen receptor-beta agonist, inhibits skin photocarcinogenesis in SKH-1 hairless mice by downregulating the WNT signaling pathway. *Cancer Prev Res (Phila).* 2014; 7: 186–198.
 69. Ekedahl H, Cirenajwis H, Harbst K, Carneiro A, Nielsen K, Olsson H, et al. The clinical significance of BRAF and NRAS mutations in a clinical-based metastatic melanoma cohort. *Br J Dermatol.* 2013; 169: 1049–1055.
 70. Lo JA, Fisher DE. The melanoma revolution: from UV carcinogenesis to a new era in therapeutics. *Science.* 2014; 346: 945–949. doi: [10.1126/science.1253735](https://doi.org/10.1126/science.1253735) PMID: [25414302](https://pubmed.ncbi.nlm.nih.gov/25414302/)
 71. Vujic I, Sanlorenzo M, Posch C, Esteve-Puig R, Yen AJ, Kwong A, et al. Metformin and trametinib have synergistic effects on cell viability and tumor growth in NRAS mutant cancer. *Oncotarget.* 2014; 6: 969–978.
 72. Chen J, Hou R, Zhang X, Ye Y, Wang Y, Tian J. Calycosin suppresses breast cancer cell growth via ER β -dependent regulation of IGF-1R, p38 MAPK and PI3K/Akt pathways. *PLoS One.* 2014; 9: e01245.
 73. Liu X, Wang L, Chen J, Ling Q, Wang H, Li S, et al. Estrogen receptor β agonist enhances temozolomide sensitivity of glioma cells by inhibiting PI3K/AKT/mTOR pathway. *Mol Med Rep.* 2015; 11: 1516–1522. doi: [10.3892/mmr.2014.2811](https://doi.org/10.3892/mmr.2014.2811) PMID: [25351348](https://pubmed.ncbi.nlm.nih.gov/25351348/)
 74. Wang J, Zhang C, Chen K, Tang H, Tang J, Song C, et al. ER β 1 inversely correlates with PTEN/PI3K/AKT pathway and predicts a favorable prognosis in triple-negative breast cancer. *Breast Cancer Res Treat.* 2015; doi: [10.1007/s10549-015-3467-3](https://doi.org/10.1007/s10549-015-3467-3)

75. Liu D, Liu X, Xing M. Activities of multiple cancer-related pathways are associated with *BRAF* mutation and predict the resistance to BRAF/MEK inhibitors in melanoma cells. *Cell Cycle*. 2014; 13: 208–219. doi: [10.4161/cc.26971](https://doi.org/10.4161/cc.26971) PMID: [24200969](https://pubmed.ncbi.nlm.nih.gov/24200969/)
76. Heinzerling L, Kühnapfel S, Meckbach D, Baiter M, Kaempgen E, Keikavoussi P, et al. Rare BRAF mutations in melanoma patients: implications for molecular testing in clinical practice. *Br J Cancer*. 2013; 108: 2164–2171. doi: [10.1038/bjc.2013.143](https://doi.org/10.1038/bjc.2013.143) PMID: [23579220](https://pubmed.ncbi.nlm.nih.gov/23579220/)
77. Campbell-Thompson M, Lynch IJ, Bhardwaj B. Expression of estrogen receptor (ER) subtypes and ER β isoforms in colon cancer. *Cancer Res*. 2001; 61: 632–640. PMID: [11212261](https://pubmed.ncbi.nlm.nih.gov/11212261/)
78. Leung YK, Lam HM, Wu S, Song D, Levin L, Cheng L, et al. Estrogen receptor β 2 and β 5 are associated with poor prognosis in prostate cancer, and promote cancer cell migration and invasion. *Endocr-Relat Cancer*. 2010; 17: 675–689. doi: [10.1677/ERC-09-0294](https://doi.org/10.1677/ERC-09-0294) PMID: [20501637](https://pubmed.ncbi.nlm.nih.gov/20501637/)
79. Leung YK, Lee MT, Lam HM, Tarapore P, Ho SM. Estrogen-receptor-beta and breast cancer: translating biology into clinical practice. *Steroids*. 2012; 77: 727–737. doi: [10.1016/j.steroids.2012.03.008](https://doi.org/10.1016/j.steroids.2012.03.008) PMID: [22465878](https://pubmed.ncbi.nlm.nih.gov/22465878/)
80. Liu Z, Liao Y, Tang H, Chen G. The expression of estrogen receptors β 2, 5 identifies and is associated with prognosis in non-small cell lung cancer. *Endocrine*. 2013; 44:517–524. doi: [10.1007/s12020-013-9916-z](https://doi.org/10.1007/s12020-013-9916-z) PMID: [23475473](https://pubmed.ncbi.nlm.nih.gov/23475473/)
81. Ciucci A, Zannoni GF, Travaglia D, Petrillo M, Scambia G, Gallo D. Prognostic significance of the estrogen receptor beta (ER β) isoforms ER β 1, ER β 2, and ER β 5 in advanced serous ovarian cancer. *Gynecol Oncol*. 2014; 132: 351–359. doi: [10.1016/j.ygyno.2013.12.027](https://doi.org/10.1016/j.ygyno.2013.12.027) PMID: [24378878](https://pubmed.ncbi.nlm.nih.gov/24378878/)
82. Hapangama DK, Kamal AM, Bulmer JN. Estrogen receptor β : the guardian of the endometrium. *Hum Reprod Update*. 2015; 21: 174–193. doi: [10.1093/humupd/dmu053](https://doi.org/10.1093/humupd/dmu053) PMID: [25305176](https://pubmed.ncbi.nlm.nih.gov/25305176/)