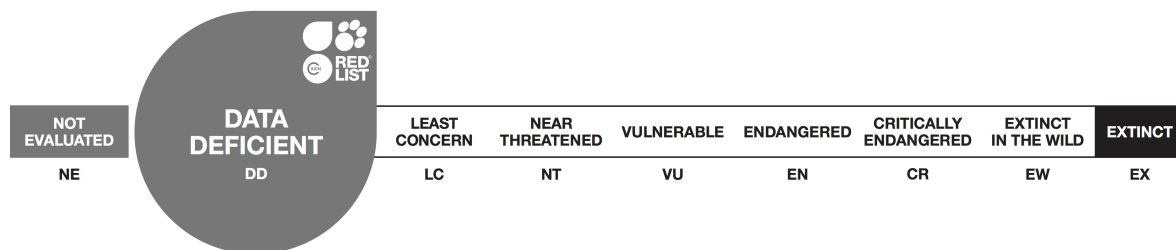


Juncus fernandez-carvajaliae

Assessment by: Romero Zarco, C., Carapeto, A., Pinto Cruz, C., García Murillo, P.G., Ríos Ruiz, S. & Fraga i Arquimbau, P.



View on www.iucnredlist.org

Citation: Romero Zarco, C., Carapeto, A., Pinto Cruz, C., García Murillo, P.G., Ríos Ruiz, S. & Fraga i Arquimbau, P. 2018. *Juncus fernandez-carvajaliae*. The IUCN Red List of Threatened Species 2018: e.T82123704A82123805. <http://dx.doi.org/10.2305/IUCN.UK.2018-1.RLTS.T82123704A82123805.en>

Copyright: © 2018 International Union for Conservation of Nature and Natural Resources

Reproduction of this publication for educational or other non-commercial purposes is authorized without prior written permission from the copyright holder provided the source is fully acknowledged.

Reproduction of this publication for resale, reposting or other commercial purposes is prohibited without prior written permission from the copyright holder. For further details see [Terms of Use](#).

The IUCN Red List of Threatened Species™ is produced and managed by the [IUCN Global Species Programme](#), the [IUCN Species Survival Commission \(SSC\)](#) and [The IUCN Red List Partnership](#). The IUCN Red List Partners are: [Arizona State University](#); [BirdLife International](#); [Botanic Gardens Conservation International](#); [Conservation International](#); [NatureServe](#); [Royal Botanic Gardens, Kew](#); [Sapienza University of Rome](#); [Texas A&M University](#); and [Zoological Society of London](#).

If you see any errors or have any questions or suggestions on what is shown in this document, please provide us with [feedback](#) so that we can correct or extend the information provided.

Taxonomy

Kingdom	Phylum	Class	Order	Family
Plantae	Tracheophyta	Liliopsida	Poales	Juncaceae

Taxon Name: *Juncus fernandez-carvajaliae* Romero Zarco & V. Arán

Taxonomic Source(s):

Romero-Zarco, C. and Arán, V.J. 2013. *Juncus fernandez-carvajaliae* sp. nov. (Juncaceae) from Castilla-La Mancha, central Spain. *Nordic Journal of Botany* 31: 190-193.

Taxonomic Notes:

A newly described annual species (Romero-Zarco and Arán 2013), it is akin to *Juncus tenageia* Ehrh. ex L. fil.

Assessment Information

Red List Category & Criteria: Data Deficient [ver 3.1](#)

Year Published: 2018

Date Assessed: August 2, 2015

Justification:

This species is endemic to central Spain, where it is currently only known from two sites in the Guadiana River basin located in the western half of Ciudad Real Province. Suitable habitat is frequent around both known sites, and the potential distribution area of this new species could be much larger. However, very little data are available at present regarding its population size, trends or threats and therefore it is assessed as Data Deficient; further research is required.

Geographic Range

Range Description:

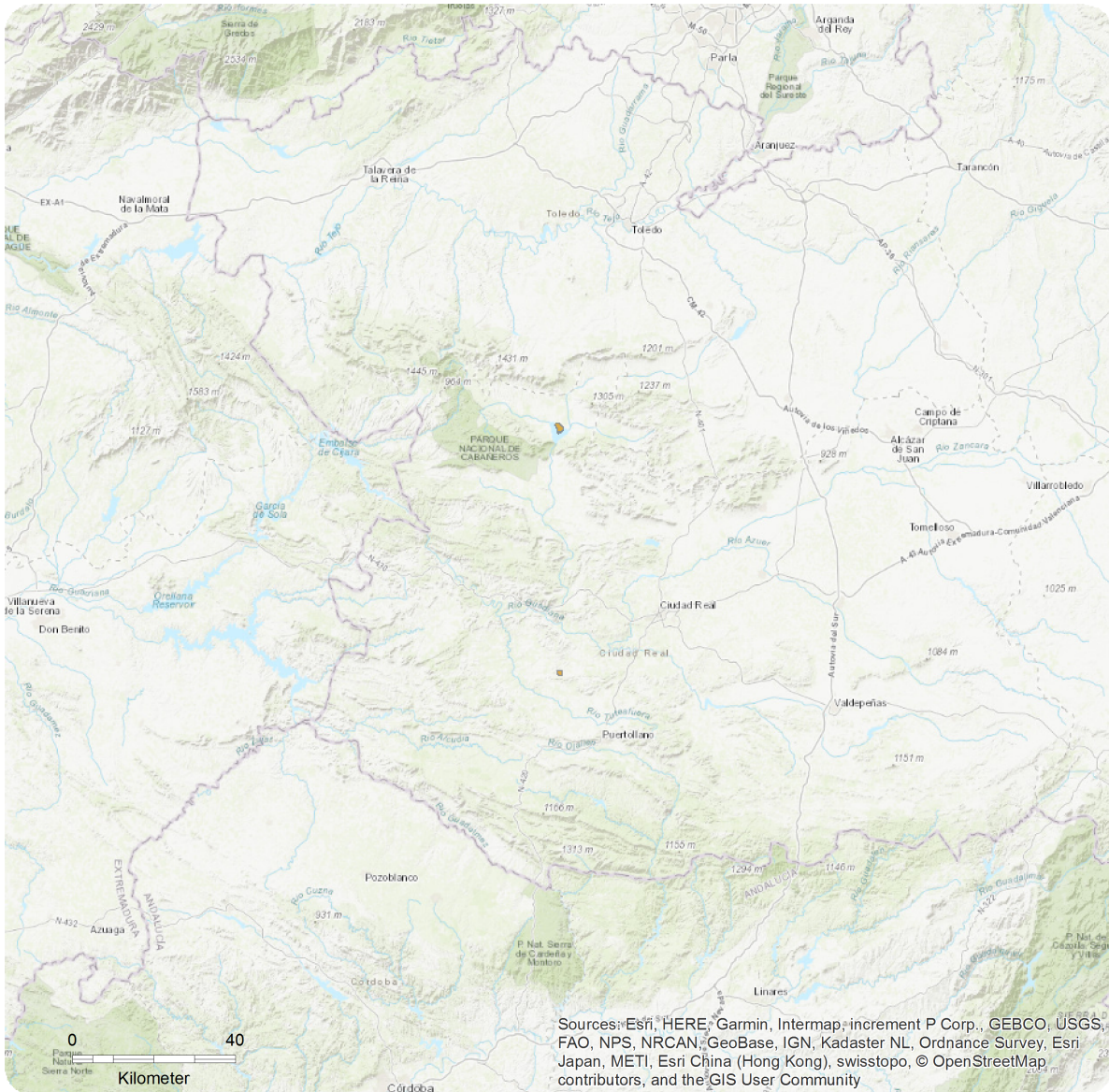
This species is endemic to central Spain, where the known distribution is restricted to two sites in the Guadiana River basin, in the western half of Ciudad Real Province. The holotype locality is situated in the Bullaque River basin, a right tributary of the Guadiana River in the NW of the province, in the Montes de Toledo region, where it has been found in pastures near a reservoir. A second site is located 63 km south of the former, in the basin of the Tirteafuera River, a left tributary of the same river, in the Campo de Calatrava area. Small endorheic places locally called navazos are frequent in both areas, and the potential distribution area of the new species could be much larger (Romero-Zarco and Arán 2013).

Country Occurrence:

Native: Spain (Spain (mainland))

Distribution Map

Juncus fernandez-carvajaliae

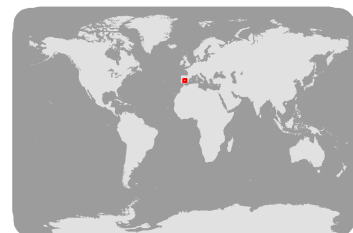


Range

Extant (resident)

Compiled by:

IUCN Mediterranean Red List



The boundaries and names shown and the designations used on this map do not imply any official endorsement, acceptance or opinion by IUCN.



Population

Annual weather conditions determine the consideration of this species as locally abundant (V. Arán pers. comm 2015). It is locally frequent (Romero-Zarco and Arán 2013).

Current Population Trend: Unknown

Habitat and Ecology (see Appendix for additional information)

This rush inhabits pastures on seasonally wet soils with siliceous substrate. It has been found together with others plants species such as *Juncus tenageia*, *J. minutulus*, *J. tingitanus*, *J. capitatus*, *J. pygmaeus*, *Centaurium maritimum*, *Ornithogalum concinnum*, *Scilla ramburei*, *Ranunculus pseudomillefoliatus* and *Cicendia filiformis* (Romero-Zarco and Arán 2013).

Systems: Terrestrial

Use and Trade

No information is available.

Threats

No information is available on threats to this species.

Conservation Actions (see Appendix for additional information)

The species is not present in protected areas (IUCN and UNEP-WCMC 2017). Additional research into threats, population and habitat trends, utilization and distribution is required for this species.

Credits

Assessor(s): Romero Zarco, C., Carapeto, A., Pinto Cruz, C., García Murillo, P.G., Ríos Ruiz, S. & Fraga i Arquimbau, P.

Reviewer(s): Allen, D.J. & García, N.

Contributor(s): Alcázar Montañez, E.

Facilitators(s) and Allen, D.J.

Compiler(s):

Bibliography

IUCN. 2018. The IUCN Red List of Threatened Species. Version 2018-1. Available at: www.iucnredlist.org. (Accessed: 28 June 2018).

IUCN and UNEP-WCMC. 2017. The World Database on Protected Areas (WDPA). www.protectedplanet.net. Cambridge, UK Available at: www.protectedplanet.net.

Protected Planet. 2017. Protected Planet: The World Database on Protected Areas (WDPA). Cambridge, UK Available at: www.protectedplanet.net. (Accessed: 2017).

Romero-Zarco, C. and Arán, V.J. 2013. *Juncus fernandez-carvajaliae* sp. nov. (Juncaceae) from Castilla-La Mancha, central Spain. *Nordic Journal of Botany* 31: 190-193.

Citation

Romero Zarco, C., Carapeto, A., Pinto Cruz, C., García Murillo, P.G., Ríos Ruiz, S. & Fraga i Arquimbau, P. 2018. *Juncus fernandez-carvajaliae*. The IUCN Red List of Threatened Species 2018: e.T82123704A82123805. <http://dx.doi.org/10.2305/IUCN.UK.2018-1.RLTS.T82123704A82123805.en>

Disclaimer

To make use of this information, please check the [Terms of Use](#).

External Resources

For [Images and External Links to Additional Information](#), please see the [Red List website](#).

Appendix

Habitats

(<http://www.iucnredlist.org/technical-documents/classification-schemes>)

Habitat	Season	Suitability	Major Importance?
14. Artificial/Terrestrial -> 14.2. Artificial/Terrestrial - Pastureland	Resident	Suitable	Yes

Conservation Actions in Place

(<http://www.iucnredlist.org/technical-documents/classification-schemes>)

Conservation Actions in Place
In-Place Land/Water Protection and Management
Occur in at least one PA: Unknown

Research Needed

(<http://www.iucnredlist.org/technical-documents/classification-schemes>)

Research Needed
1. Research -> 1.2. Population size, distribution & trends
1. Research -> 1.5. Threats
3. Monitoring -> 3.1. Population trends
3. Monitoring -> 3.4. Habitat trends

Additional Data Fields

Distribution
Lower elevation limit (m): 675
Upper elevation limit (m): 693
Habitats and Ecology
Continuing decline in area, extent and/or quality of habitat: Unknown

The IUCN Red List Partnership



The IUCN Red List of Threatened Species™ is produced and managed by the [IUCN Global Species Programme](#), the [IUCN Species Survival Commission \(SSC\)](#) and [The IUCN Red List Partnership](#).

The IUCN Red List Partners are: [Arizona State University](#); [BirdLife International](#); [Botanic Gardens Conservation International](#); [Conservation International](#); [NatureServe](#); [Royal Botanic Gardens, Kew](#); [Sapienza University of Rome](#); [Texas A&M University](#); and [Zoological Society of London](#).