



Swansea University  
Prifysgol Abertawe



## Cronfa - Swansea University Open Access Repository

---

This is an author produced version of a paper published in:

*Epigenetics*

Cronfa URL for this paper:

<http://cronfa.swan.ac.uk/Record/cronfa46218>

---

### **Paper:**

Uren Webster, T., Rodriguez Barreto, D., Martin, S., van Oosterhout, C., Orozco-terWengel, p., Cable, J., Hamilton, A., Garcia de Leaniz, C. & Consuegra, S. (in press). Contrasting effects of acute and chronic stress on the transcriptome, epigenome, and immune response of Atlantic salmon. *Epigenetics*

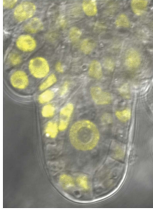
---

This item is brought to you by Swansea University. Any person downloading material is agreeing to abide by the terms of the repository licence. Copies of full text items may be used or reproduced in any format or medium, without prior permission for personal research or study, educational or non-commercial purposes only. The copyright for any work remains with the original author unless otherwise specified. The full-text must not be sold in any format or medium without the formal permission of the copyright holder.

Permission for multiple reproductions should be obtained from the original author.

Authors are personally responsible for adhering to copyright and publisher restrictions when uploading content to the repository.

<http://www.swansea.ac.uk/library/researchsupport/ris-support/>



## Contrasting effects of acute and chronic stress on the transcriptome, epigenome, and immune response of Atlantic salmon

Tamsyn M. Uren Webster, Deiene Rodriguez-Barreto, Samuel A.M. Martin, Cock Van Oosterhout, Pablo Orozco-terWengel, Joanne Cable, Alastair Hamilton, Carlos Garcia De Leaniz & Sofia Consuegra

To cite this article: Tamsyn M. Uren Webster, Deiene Rodriguez-Barreto, Samuel A.M. Martin, Cock Van Oosterhout, Pablo Orozco-terWengel, Joanne Cable, Alastair Hamilton, Carlos Garcia De Leaniz & Sofia Consuegra (2018): Contrasting effects of acute and chronic stress on the transcriptome, epigenome, and immune response of Atlantic salmon, *Epigenetics*, DOI: [10.1080/15592294.2018.1554520](https://doi.org/10.1080/15592294.2018.1554520)

To link to this article: <https://doi.org/10.1080/15592294.2018.1554520>



© 2018 The Author(s). Published by Informa UK Limited, trading as Taylor & Francis Group.



[View supplementary material](#)



Accepted author version posted online: 11 Dec 2018.  
Published online: 13 Dec 2018.



[Submit your article to this journal](#)



Article views: 18



[View Crossmark data](#)

## Contrasting effects of acute and chronic stress on the transcriptome, epigenome, and immune response of Atlantic salmon

Tamsyn M. Uren Webster <sup>a</sup>, Deiene Rodriguez-Barreto <sup>a</sup>, Samuel A.M. Martin<sup>b</sup>, Cock Van Oosterhout <sup>c</sup>, Pablo Orozco-terWengel <sup>d</sup>, Joanne Cable <sup>d</sup>, Alastair Hamilton<sup>e</sup>, Carlos Garcia De Leaniz <sup>a</sup>, and Sofia Consuegra <sup>a</sup>

<sup>a</sup>Centre for Sustainable Aquatic Research, College of Science, Swansea University, Swansea, UK; <sup>b</sup>School of Biological Sciences, University of Aberdeen, Aberdeen, UK; <sup>c</sup>School of Environmental Sciences, University of East Anglia, Norwich, UK; <sup>d</sup>School of Biosciences, Cardiff University, Cardiff, UK; <sup>e</sup>Landcatch Natural Selection Ltd, Stirling University Innovation Park, Stirling, UK

### ABSTRACT

Stress experienced during early life may have lasting effects on the immune system, with impacts on health and disease dependent on the nature and duration of the stressor. The epigenome is especially sensitive to environmental stimuli during early life and represents a potential mechanism through which stress may cause long-lasting health effects. However, the extent to which the epigenome responds differently to chronic vs acute stressors is unclear, especially for non-mammalian species. We examined the effects of acute stress (cold-shock during embryogenesis) and chronic stress (absence of tank enrichment during larval-stage) on global gene expression (using RNA-seq) and DNA methylation (using RRBS) in the gills of Atlantic salmon (*Salmo salar*) four months after hatching. Chronic stress induced pronounced transcriptional differences, while acute stress caused few lasting transcriptional effects. However, both acute and chronic stress caused lasting and contrasting changes in the methylome. Crucially, we found that acute stress enhanced transcriptional immune response to a pathogenic challenge (bacterial lipopolysaccharide, LPS), while chronic stress suppressed it. We identified stress-induced changes in promoter and gene-body methylation that were associated with altered expression for a small proportion of immune-related genes, and evidence of wider epigenetic regulation within signalling pathways involved in immune response. Our results suggest that stress can affect immuno-competence through epigenetic mechanisms, and highlight the markedly different effects of chronic larval and acute embryonic stress. This knowledge could be used to harness the stimulatory effects of acute stress on immunity, paving the way for improved stress and disease management through epigenetic conditioning.

### ARTICLE HISTORY

Received 6 July 2018  
Revised 20 November 2018  
Accepted 26 November 2018

### KEYWORDS

DNA methylation; RRBS; transcriptomics; rna-seq; aquaculture; stress; early life; immune response; pathogen


## Introduction

The stress response is a fundamental survival mechanism that provides a critical adaptive response to many environmental challenges, but may also compromise the immune system [1,2]. The precise impacts of environmental stress on immune function often depend on the timing, duration, magnitude, and nature of the stressor [3]. Chronic stressors, lasting for days or weeks, can dysregulate immune response by inducing long-term changes in energetic metabolism, persistent low level inflammation, and by suppressing the release of immune cells and cytokines [4]. In contrast, acute stressors, lasting for minutes to

hours, are less likely to impair immune function, and may even enhance immune response by stimulating the maturation, secretion and redistribution of immune cells and cytokines [5].

For vertebrates, early life stages may be particularly sensitive to environmental stress due to developmental plasticity during critical periods of differentiation and maturation of the nervous and immune systems [6]. In mammalian systems, it is well established that early-life stress can have long-lasting adverse effects on health and disease susceptibility. For example, maternal stress during pregnancy predisposes the offspring to developmental, immunological and behavioural

**CONTACT** Tamsyn M. Uren Webster  T.M.UrenWebster@Swansea.ac.uk  Centre for Sustainable Aquatic Research, College of Science, Swansea University, Swansea SA2 8PP, UK

 Supplemental data for this article can be accessed [here](#).

© 2018 The Author(s). Published by Informa UK Limited, trading as Taylor & Francis Group.

This is an Open Access article distributed under the terms of the Creative Commons Attribution License (<http://creativecommons.org/licenses/by/4.0/>), which permits unrestricted use, distribution, and reproduction in any medium, provided the original work is properly cited.

abnormalities throughout their life, and post-natal trauma is associated with an increased risk of depression, obesity, diabetes and cardiovascular disease [7,8]. However, exposure to mild stress during early life may have beneficial effects later in life, a phenomenon known as hormesis [9]. The molecular mechanisms underlying this effect are not fully understood, but hormesis can enhance immune function as part of a primed, more efficient response to future stressors [10], and could even be harnessed in a clinical setting to boost protective immunity [4].

Environmental stress can also induce changes in the epigenome, providing a mechanism by which stress can have long-term effects on transcriptional regulation and the phenotype throughout an individual's lifetime and, in some cases, on its progeny [6,7]. Epigenetic modifications following exposure to stress during early life are known to induce lasting transcriptional and structural changes in the mammalian brain [11–14]. On a gene-specific basis, promoter silencing activity, whereby DNA methylation in promoter regions negatively regulates gene transcription, has been demonstrated to mediate lasting effects of stress on physiology, behaviour and psychiatric disorders [13–15]. However, at the genome-wide level, the association between DNA methylation and gene expression is not straightforward. Complex interactions between different targets, cell types and layers of epigenetic regulation may facilitate wide, indirect effects of environmental stress [7,12]. Beyond these critical effects on brain and behaviour, stress may also be expected to have far-reaching effects on whole-organism physiology, including immunity, metabolism, nutrition and reproduction, but these remain largely unexplored [16].

Fish are subjected to high levels of stress in aquaculture systems due to confinement, handling and environmental mismatch, which can impair immuno-competence and increase disease susceptibility [17]. Improving stress and disease resistance is a critical priority for the sustainable growth of aquaculture, which needs to provide a reliable and safe source of food for a growing human population, improve animal welfare and reduce impacts on the environment [18]. Stress has well known effects on fish [e.g. 3, 19], but little is known about how stress experienced during early development

can affect health later in life, or what are the underlying molecular mechanisms of stress. During early life, many fish species undergo a critical period for survival that coincides with the transition from endogenous to exogenous feeding and with development of the immune system, when they are especially sensitive to stress [20,21]. Recent research also suggests that stress modifies the fish epigenome in a developmental-stage specific manner, with these early life stages displaying a heightened period of epigenetic sensitivity [22]. Therefore, we hypothesised that chronic stress experienced during early development would adversely affect immune function, while short-lived, mild stress could enhance immuno-competence, and that these effects might be mediated by epigenetic mechanisms. We compared the effects of acute stress (cold shock and air exposure during late embryogenesis) and chronic stress (lack of tank enrichment during larval stage) on the gill transcriptome and methylome of Atlantic salmon (*Salmo salar*) fry, and also examined transcriptional immune response to a model pathogenic challenge (bacterial lipopolysaccharide, LPS). We selected the gills as our target tissue because they represent an important route of entry for water-borne pathogens, play a critical role in immune defence against infection, and are also a known target of stress-response signalling [23–25].

## Results

### *Survival and growth*

Average time to hatching was 474 degree days (DD; i.e. 63 days post fertilisation at a temperature gradually increasing from 7 to 9.5 °C), with no differences between the control, acute stress or chronic stress groups. Overall hatching success was  $95.3 \pm 1.1\%$  and larval survival until 110 days post-hatch was  $89.1 \pm 1.1\%$ , with no significant difference between the groups (hatching success;  $F_{3,2} = 1.38$ ,  $P = 0.377$ , survival;  $F_{3,2} = 0.19$ ,  $P = 0.836$ ; Table S1). There was a significant effect of treatment on growth rate during pre- and early-feeding (748 and 1019 DD), whereby fish exposed to chronic stress initially lost weight while those in the control and acute stress groups did not, but this difference in size was no longer apparent at

later sampling points (492 DD:  $F_{3,114} = 0.37$ ,  $P = 0.718$ ; 748 DD:  $F_{3,114} = 15.82$ ,  $P = 0.025$ ; 1019 DD:  $F_{3,114} = 15.42$ ,  $P = 0.026$ ; 1323 DD:  $F_{3,114} = 1.63$ ,  $P = 0.330$ , 1532 DD:  $F_{3,114} = 4.78$ ,  $P = 0.117$ ; Table S1). There were no significant differences in fork length or condition factor between groups at the final sampling point (Length:  $F_{3,114} = 1.36$ ,  $P = 0.381$ ; K:  $F_{3,114} = 2.18$ ,  $P = 0.260$ ). There were no apparent differences in the timing of first feeding, activity levels or behaviour between treatment groups. Exposure to LPS for 24h caused no mortalities, or any apparent behavioural changes indicative of distress.

### Transcriptomic analysis

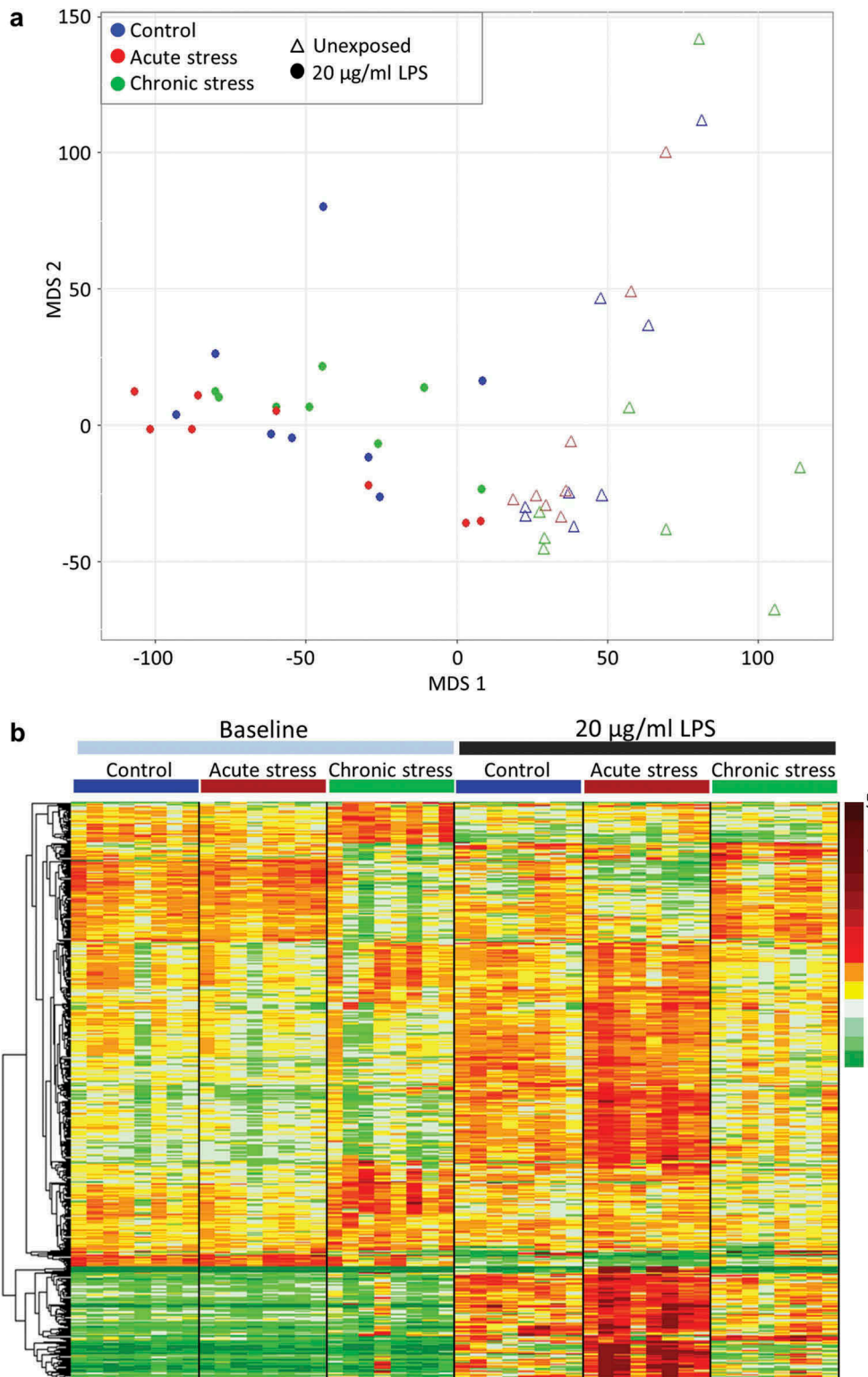
Transcriptomic data are available from the European Nucleotide Archive <https://www.ebi.ac.uk/ena> under the accession number PRJEB25636. After quality filtering, an average of 27.8 million paired end RNA-seq reads (91.8%) were retained per sample. Of these, a total of 94.5% were mapped to the Atlantic salmon genome, including 84.1% unique alignments (Table S2). Following transcript reconstruction and novel assembly, we obtained a total of 201,433 transcripts in 104,528 putative loci, and statistical expression analysis was performed for 78,229 putative expressed genes with nonzero read counts. These included 44,962 unique mRNA annotations, 14,445 predicted loci and 4,510 unique ncRNAs from the Atlantic salmon genome [26], together with 3,188 novel loci.

Expression analysis with DeSeq2 identified a total of 19 genes significantly differentially expressed (FDR <0.05) between the acute stress group and the control fish (Table S3). In the chronically-stressed group, there were 206 differentially expressed genes compared to the control group, the vast majority (190, 92.2%) of which were up-regulated, and a functional analysis of these genes revealed strong enrichment of ribosome structural constituents and translation, as well as muscle development, energy metabolism and bacterial defence response (Table S4; Figure S1).

LPS exposure had a very marked effect on gene transcription in the gills. MDS analysis based on the whole transcriptome clearly separated all LPS-exposed individuals from non-exposed fish (Figure 1(a)). The main effect of exposure to

20 µg/ml LPS in the (non-stressed) control group was characterised by 14,833 up-regulated and 10,636 down-regulated genes (FDR <0.05) (Figure S3). These included a large number of genes encoding proteins typically associated with inflammatory immune response including a large number of mucins; interleukins, interferons, TNF, chemokines and their regulatory factors and receptors; complement factors, immunoglobins and damage-inducible molecular chaperones. Fold changes for a selected list of these significantly differentially expressed genes with direct immune function is provided in the supporting information (Table S5). Overall functional analysis for the up-regulated genes revealed strong enrichment of GO terms related to cellular stress response (Figure S4). Enriched terms included those related to cell adhesion, cellular signal transduction, regulation of transcription, protein modification, response to LPS and response to cytokines (Biological Process), extracellular matrix (Cellular Component), and transcription factor activity, protein kinase/phosphatase activity, and binding of signalling molecules (Molecular Function). Enriched KEGG pathways included extracellular matrix-receptor interaction, as well as specific pathogen recognition pathways (NOD-like, RIG-like, TOLL-like receptor signalling). For down-regulated genes, enriched terms were related to general cell maintenance processes. These included terms related to DNA-replication and repair, redox reactions, cell cycle and translation (Biological Process), ribosome and mitochondria (Cellular Component), ribosome constituent, redox activity and metabolic enzyme activity (Molecular Function), and DNA replication, ribosome and metabolic pathways (KEGG pathway).

In addition to the main effect of LPS exposure identified in control fish (described above), we identified a significant interaction between stress and transcriptional response to pathogen challenge. Acute and chronic stress during early life altered the transcriptional response to LPS in contrasting ways (Figure 1(b)). A significant interaction between acute stress and LPS exposure was identified for 194 genes (FDR <0.05). The vast majority of these genes were significantly more responsive to LPS in acutely stressed fish than in the control group; 140 genes (72.2%) were up-



**Figure 1. The impact of early life stress on transcriptional response to LPS.** (a) Multidimensional scaling analysis illustrating the very significant effect of exposure to 20 µg/ml LPS on the entire gill transcriptome (78,229 putative loci) of fish from all stress treatment groups. (b) Heat map illustrating the expression of all genes for which a significant interaction between acute and/or chronic stress and LPS response was identified (516 genes), in all baseline and LPS-exposed fish. Data presented are read counts for each individual normalised by library size, and by mean expression for each gene. Hierarchical clustering was performed using an Euclidian distance metric.

regulated relative to the control group in response to LPS, while 41 genes (21.1%) were down-regulated relative to the control group in response to LPS. Only 9 (4.6%) genes that were significantly regulated by LPS in control fish were not significantly responsive in the acutely-stressed group, and 4 (2.1%) genes were regulated in the opposite direction. Functional analysis of the genes with enhanced responsiveness to LPS in acutely-stressed fish revealed further enrichment of processes identified for the main LPS response, together with pathways related to lipid metabolism and mucin production (Figure S5a). For chronically stressed fish, a total of 347 genes were expressed in a significantly different way following LPS exposure compared to the main effect of LPS exposure identified in non-stressed control fish. The majority of these genes (218, 62.8%) were not significantly regulated by LPS, or were significantly less responsive to LPS exposure relative to the control group (Figure 1(b)). Functional analysis of these less responsive genes revealed enrichment of a number of processes identified as part of the main LPS response (including cell adhesion, signal transduction, response to bacterium/lipopolysaccharide and p53 signalling), and amongst the more down-regulated genes there was a strong enrichment of ribosome and translation (Figure S5b). Only 28 (8.1%) and 57 (16.4%) genes, respectively, were up-regulated and down-regulated to a greater extent in chronically-stressed fish than in the control group, which is in stark contrast to the enhancive effect of acute stress on transcriptional response to LPS.

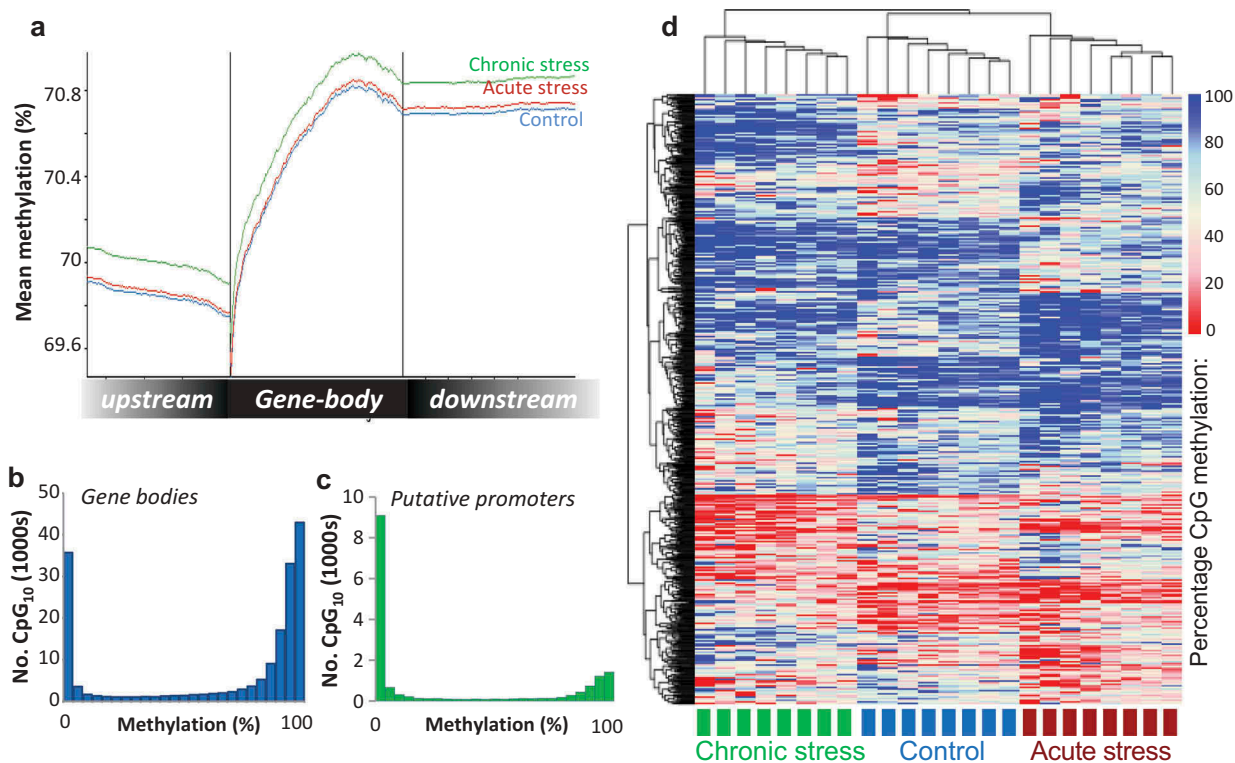
### Methylation analysis

Epigenetics data is available from the European Nucleotide Archive <https://www.ebi.ac.uk/ena> under the accession number PRJEB25637. After quality filtering, a total of 1534 million high quality single end RRBS reads, averaging 64 million/sample, were retained. A total of 90.6% of these were mapped to the reference genome, with a unique alignment rate of 43.5% (Table S6). Analysis of spike-in methylation controls revealed an overall bisulphite conversion efficiency of 99.7%, with 2.0% inappropriate conversion of methylated cytosines to thymines. In total, we

identified 21.3 million CpG sites in our libraries, but only 1.1 million were covered in all samples, representing 2.75% of total CpGs in the Atlantic salmon genome, which is a comparable percentage to that previously reported for RRBS experiments in zebrafish (5.3%; [27]) and rainbow trout (<1% [28]). Methylation analysis was conducted only using CpGs covered by at least 10 reads in all libraries (335,996 CpG sites).

The majority of the CpGs surveyed mapped to gene bodies (53%) or intergenic regions (45%), with 4% located in putative promoter regions. In terms of CpG context, 12% of CpGs were located in CpG islands, 17% in CpGshores, and 11% in CpGshelves. CpG methylation level dropped progressively in the region upstream of the TSS, then increased sharply within the gene body (Figure 2(a)). Genome-wide CpG methylation displayed a bimodal distribution, whereby the majority of CpGs within gene bodies (60.08%) were highly methylated (>80% methylation), while a large proportion (24.6%) were unmethylated or hypo-methylated (<20% methylation) (Figure 2(b)). Across the putative promoter regions, there was a greater proportion of hypo-methylated CpGs (64.1%) (Figure 2(c)). Genome-wide, the average methylation of all CpG sites was  $74.87\% \pm 0.38$  in the control group,  $74.04\% \pm 0.71$  in the acute stressed fish and  $74.94\% \pm 0.82$  in the chronically stressed group, with no significant difference among groups ( $F_{2,21} = 0.55$ ,  $P = 0.59$ ).

Compared to the control fish, a total of 1895 and 1952 differentially methylated CpG sites (DMCpGs) were identified using logistic regression ( $FDR < 0.05$ ,  $|\Delta M| \geq 20\%$ ) in the acute stress and chronic stress groups, respectively. The genomic distribution and context of the DMCpGs largely mirrored the wider methylome landscape, with half of the DMCpGs overlapping intragenic regions (52%). DMCpGs overlapped or neighbored (up to 2 Kb (upstream or downstream) of the TSS or transcription termination site (TTS) respectively) a total of 907 genes for the acute stress group, and 925 genes for the chronic stress group, including 242 common genes shared in both groups. For both stress groups, the most strongly enriched functional processes amongst these genes were related to cellular adhesion and cellular signalling pathways (Figure S6). These included terms related to cell adhesion, intracellular signal transduction, Rho protein signalling, calcium ion transport and



**Figure 2. Visualisation of the Atlantic salmon gill methylome.** (a) Average CpG methylation percentage in gene bodies and within the 1.5 Kb upstream and downstream of the transcription start (TSS) and termination sites (TTS) for each stress group. (b-c) Histograms of average methylation distribution within gene bodies and putative promoter regions. (d) Heat map illustrating percentage methylation for all differentially methylated CpGs identified in response to acute and/or chronic stress (logistic regression  $q < 0.01$  and  $|\Delta M| > 20\%$ , and t.test  $p < 0.01$ ) in all individuals at the baseline time-point, using unsupervised hierarchical clustering.

signalling and ion transport (Biological Process), plasma membrane, cell junction, myosin complex (Cellular Component) and ion channel and transported activity, GTPase and guanyl-nucleotide exchange activity (Molecular Function). A more stringent list of 1004 total DMCPGs were identified across both types of stress using both statistical methods (logistic regression and t-tests). Unsupervised hierarchical clustering of these DMCPGs revealed a distinctive methylation profile for both the acutely and chronically stressed groups with respect to the controls and to each other, although there was greater resemblance between the control and acute stress groups (Figure 2(d)).

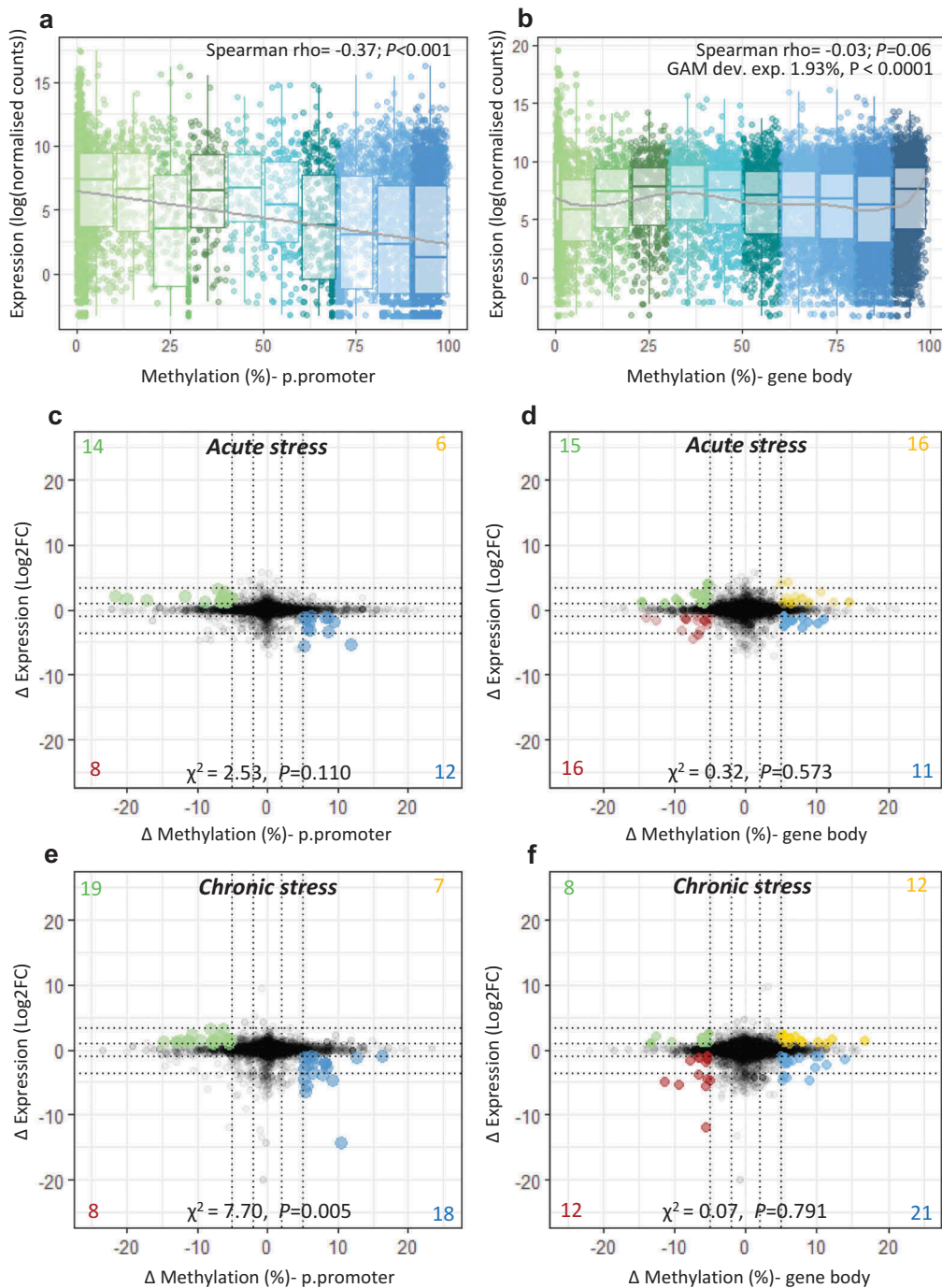
### Transcriptome-methylome integration

We examined the transcriptome wide association between gene expression and DNA methylation within putative promoter regions (p.promoters; windows from 1500 bp upstream to 1000 bp

downstream of the transcription start site (TSS)) and within gene bodies. There was a significant negative association between p.promoter mean methylation and gene expression (Spearman  $\rho = -0.37$ ;  $P < 0.001$ ; Figure 3(a)), but no linear association between gene body methylation and gene expression (Spearman  $\rho = -0.03$ ;  $P = 0.062$ ). There was some evidence of a heterogeneous relationship between gene body methylation and gene expression. GAM analysis indicated that a small, but significant, part of gene expression (deviance explained = 1.93%) was explained by the smooth component of gene body methylation ( $F_{edf} = 8.55$ ,  $ref.df = 8.94$ ,  $P < 0.0001$ , Figure 3(b)).

We then identified genes for which there was a notable effect of early life stress on both DNA methylation (p.promoters and gene bodies) and on gene expression ( $>2$  FC delta expression and  $>5\%$  methylation difference) at the baseline time-point (i.e. not exposed to LPS). For p.promoters, there was evidence of unequal distribution of genes between hyper-methylated/up-regulated, hypo-methylated





**Figure 3. Integration of transcriptome and methylome.** Scatterplot and boxplot displaying mean gene expression and mean DNA methylation for (a) putative promoters and (b) gene bodies in control fish ( $n = 8$ ), with lines representing a linear trend (A) and a smoothed GAM curve (B). (c-f) Starburst plots displaying the effect of stress on the transcriptome and the methylome. For each type of stress relative to the control group, change in gene expression (log2fold change) is plotted against change in DNA methylation ( $\Delta M$ ) for (c,e) *putative promoters* and (d,f) *gene bodies*. Highlighted dots denote genes with  $\Delta M > 5\%$  and  $|FC| > 2$ ; yellow = hyper-methylated/up-regulated, blue = hyper-methylated/down-regulated, green = hypo-methylated/up-regulated, red = hypo-methylated/down-regulated. A full list of highlighted genes is provided in Table S5-S6.

/up-regulated, hyper-methylated/down-regulated and hypo-methylated/down-regulated groups (Acute stress:  $\chi^2_1 = 2.53$ ,  $P = 0.110$ , Chronic stress:  $\chi^2_1 = 7.70$ ,  $P = 0.005$ ), with a greater number of

genes with an inverse relationship between delta methylation and delta expression (Figure 3(c,e) Table S7). Therefore, and given the overall negative relationship between methylation in p.promoter

regions and gene expression, we focused only on these genes with an inverse relationship. However, there was no evidence of a similar effect between delta gene body methylation and delta expression (Acute stress:  $\chi^2_1 = 0.32$ ,  $P = 0.573$ , Chronic stress:  $\chi^2_1 = 0.07$ ,  $P = 0.791$ ), therefore we included all genes above the threshold (Figure 3(d,f); Table S8). Combined functional analysis of these genes revealed enrichment of processes related to ion/calcium ion transport and signal transduction (Figure S7).

Finally, we examined the potential for stress-induced changes in baseline DNA methylation to contribute to the observed altered transcriptional response to LPS. We did not perform methylation analysis for the fish exposed to LPS, but we hypothesised that baseline promoter and/or gene body methylation status might influence the rapid transcriptional response induced by LPS exposure. Of the genes that showed a significant interaction between stress treatment and response to LPS, 28 (acute stress) and 57 (chronic stress) met the coverage criteria for targeted analysis of baseline p. promoter methylation (Figure S8). For acutely-stressed fish we identified three genes with hypo-methylation ( $|\Delta M| > 5\%$ ) and increased-expression in response to LPS treatment relative to the control group (*Irrn4cl*, *usp54a*, *st3gal1l3*), and for chronically-stressed fish we identified three genes with hyper-methylation and reduced expression (*yaf2*, *casp3a*, *ddx56*). For gene body methylation, 42 (acute stress) and 63 (chronic stress) genes met the criteria for targeted analysis. Of these in acutely stressed fish we identified three hypo-methylated genes with respect to the control group (*cer*, *chpf*, *ahnakl*), and in chronically stressed fish we identified two hypo-methylated genes with respect to the control group (*nocta* and E3 ubiquitin-protein ligase KEG-like).

## Discussion

Our study indicates that acute and chronic environmental stressors experienced during early development have distinct effects on the gill transcriptome, methylome and on immune function in Atlantic salmon fry. We found that while acute stress applied during late embryogenesis had limited long-term effects on the gill transcriptome, chronic stress experienced during the larval stage

was associated with lasting transcriptional changes. However, both acute and chronic stress caused lasting, and contrasting, changes in the gill methylome. Crucially, early-life stress altered transcriptional response to a model pathogen challenge in a stress-specific way, with acute stress enhancing the inflammatory immune response and chronic stress suppressing it. Our results also suggest that epigenetic changes may contribute to these modulatory effects of early life stress on immuno-competence. We identified a small proportion of genes for which an association could be made between stress-induced changes in promoter or gene body methylation and changes in expression, suggestive of a direct regulatory relationship. Furthermore, gene enrichment analysis revealed broader stress-induced epigenetic modifications within critical cellular signalling pathways involved in the immune response.

### **Lasting effects of stress on both the transcriptome and epigenome**

Acute stress during late embryogenesis caused a lasting significant difference in the expression of fewer than 20 genes in the gill of salmon fry four months later. Previous studies have reported pronounced changes in transcription occurring immediately after similar acute temperature challenges in fish embryos and in hatched fry [22,29]. However, given that the acute stress was applied four months earlier and that we observed no effects on survival and growth, the direct transcriptional response to acute, sub-lethal stress appears to be short-lived. This is consistent with what is known about physiological and transcriptional recovery following acute thermal shock and other stressors [29,30]. In contrast, over 200 genes were differentially expressed in response to the ongoing chronic stress and, functionally, these changes suggested an apparent up-regulation of active protein synthesis. Although immediate stress responses have often been associated with reduced protein synthesis in fish and mammals [22,31,32], cellular stress response is extremely complex and it is possible that these transcriptional changes represent a compensatory response to chronic stress. There was also evidence of up-regulation of energy metabolism, muscle

differentiation and insulin-like growth factor signalling, which may be associated with a compensatory increase in growth rate in this group after the observed initial weight loss.

With regards to the epigenome, both acute and chronic stress during early life induced significant changes in gill DNA methylation profiles compared to controls. It is clear that the two different stressors induced distinct and specific alterations in the methylation profile of individual CpGs. Chronic stress induced a greater epigenetic change relative to the controls, but acute stress also caused distinct and lasting effects on the methylome, even in the absence of lasting transcriptional effects. Stress has been shown to cause long-lasting alterations in methylation profiles throughout an individual's lifetime that appear to depend on the intensity and timing of the stressor [6,8,22]. However, to our knowledge no study has examined the contrasting effects of acute vs chronic stress on the fish transcriptome and epigenome. While the acute embryonic and chronic larval stress resulted in quite distinct methylation patterns of individual CpGs, functional analysis of the genes which contained or neighboured DMCPGs revealed enrichment of very similar cellular processes for both types of stress. A large number of terms related to cellular signalling pathways and their regulation were enriched for both stress groups, particularly glutamate, calcium and Rho-GTPase signalling. Epigenetic modification appears to explain the dysregulation of the neurotransmitter glutamate, commonly observed with stress-induced disorders in the mammalian brain [13]. Glutamate also has an important signalling role in peripheral tissues, including the fish gill [33] and it is possible that it might represent an important, wider target of epigenetic regulation. Cellular adhesion was also one of the most enriched terms in both stress groups, reflecting differential methylation of CpGs in a large number of genes encoding cadherins and protocadherins, as well as integrins, laminins and fibronectin. Cellular adhesion is critical for signal transduction as well as maintaining structure in multicellular tissues, and altered epigenetic regulation of these components has been reported for several autoimmune disorders and cancers [34]. This differential methylation of similar signalling pathways by both

acute and chronic early life stress suggests that intra- and inter-cellular signal transduction may be a common target of stress-induced epigenetic regulation, with the potential to influence an extremely diverse array of cellular processes. However, it seems likely that the precise location and nature of CpG methylation change, which was distinct between acute and chronic stress, accounts for the fine tuning of epigenetic regulation and the resultant specific effects on transcription.

### ***Stress-induced changes in immune response to a model pathogen exposure***

There was a very pronounced transcriptional effect of LPS in the gill in all exposed fish across treatment groups, characterising an extensive inflammatory response. Pro-inflammatory cytokines (TNF, IFN $\gamma$ , TGF $\beta$ , IL-1b), which are typical markers of LPS regulation [35], together with many other cytokines, their regulatory factors and receptors, were differentially expressed. Several pathogen-associated molecular pattern (PAMP) recognition signalling pathways (NOD-like receptor, RIG-I-like receptor and Toll-like receptor signalling) were also functionally enriched, although there is no known specific recognition receptor for LPS in fish [36]. Mucus provides a vital first line of pathogen defence [37], and a number of mucins (muc-2, 5, 7, 12, 17 and 19) were amongst the most up-regulated genes, together with other mucus components essential for immune response including antimicrobial factors (hepcidin, cathepsin, cathelicidin), lectins and complement factors. Transcriptional regulation and cellular signalling pathways were strongly enriched amongst genes up-regulated by LPS exposure, reflecting the diversity and complexity of the immune response. In particular, protein tyrosine kinases and phosphatases that are key regulators of signal transduction cascades [38] were extensively up-regulated. Furthermore, processes associated with the extracellular matrix (ECM), which provides cellular support and facilitates cellular signalling and adhesion [39–41], were strongly enriched. Remodelling of the ECM is stimulated by inflammatory cytokines and has a crucial role in inflammatory response, through immune cell recruitment, activation and proliferation [39]. A large number of

genes encoding structural components of the ECM, including many collagens, elastins, integrins, cadherins, laminins, thrombospondins and fibronectins, were up-regulated by LPS. We also found enrichment of protein transport and exocytosis, which are involved in secretion of these ECM components, and serine/threonine proteases and matrix metalloproteinases, which are important for their cleavage and activation [41]. In contrast, processes related to cell division (cell cycle, DNA replication and repair) as well as protein, lipid and energy metabolism, were most strongly enriched amongst down-regulated genes. It seems likely that compensatory suppression of these processes, which are critical for the normal maintenance of tissue function and order [42], facilitate the pronounced, acute immune response observed [43].

Transcriptional response to LPS exposure in the control group characterised a typical inflammatory immune response. We identified a significant interaction between stress and LPS response, for both the acute and chronic stressors. For fish exposed to acute cold shock during late embryogenesis, transcriptional response to LPS was of greater magnitude, but functionally similar to that of the control group. The vast majority of LPS-responsive genes identified in control fish were also differentially expressed in acutely stressed fish, and a considerable number of these were regulated to a significantly greater extent. Additional responsive genes included a number of other cytokines and their receptors, mucins and ECM components. Processes related to lipid biosynthesis were particularly over-represented amongst additional LPS-responsive genes in acutely stressed fish, including genes involved in *srebp1* signalling and sphingolipid metabolism, both of which are critical in mediating the membrane-dependent receptor based regulation of the innate immune response [44]. This suggests that acute stress during late embryogenesis enhanced subsequent immune response, while in contrast chronic stress appeared to depress the transcriptional response to LPS, as more than 200 genes were significantly less responsive to the pathogen challenge than in the control group. These included a number of the typical pro-inflammatory response markers and many genes involved in processes such as signal transduction and ECM reorganisation, which were identified as central to the main LPS

response in control fish. These results are consistent with previous reports of enhancing and suppressive effects of acute and chronic stress respectively on immuno-competence in mammals and fish [3,4,45,46]. While chronic stress is widely known to impair immune function, by altering the balance and activity of immune cells and cytokines, acute physiological stress can have an adaptive role, preparing organisms to deal with subsequent challenges [10]. It is thought that mild, acute stress can enhance both innate and adaptive immunity, by increasing the production and maturation of immune cells and cytokines, especially when applied during key periods of immune activation [3,4,46].

#### **An epigenetic basis for lasting stress effects?**

Epigenetic mechanisms are known to mediate lasting effects of early life stress on physiology, behaviour and disease outcomes in mammalian models on a gene-specific basis [6,8]. For example, reduced methylation in the promoter of the glucocorticoid receptor, *Nr3c1*, due to early life stress is known to cause an increase in its expression in the brain, with lasting physiological and behavioural effects [47]. However, interpreting genome-wide associative patterns between DNA methylation and gene-expression is challenging due to the complexity of the different layers of epigenetic regulation [12]. Evidence suggests that the relationship between DNA methylation and gene expression varies widely across the genome, and occurs on a gene-specific basis [48,49]. Here we found evidence of a significant, transcriptome-wide negative correlation between DNA methylation level in putative promoters and gene expression, which is consistent with previous reports in mammals and fish [50–52]. In contrast, there was no linear relationship between gene-body methylation and gene expression; however there was some evidence of a more complex, heterogeneous, relationship. This may be consistent with previous reports for mammals and plants, where non-monotonic relationships between gene methylation and expression have been reported [53–56]. However, transcriptome-wide, the relationship between gene expression and DNA methylation was very variable among individual genes.

Given the marked effects of both acute and chronic early life stress on the gill methylome, we hypothesised that stress-induced changes in DNA methylation of putative promoter regions and/or gene bodies could influence baseline transcription and also the rapid transcriptional response to a pathogenic challenge. We identified a small proportion of genes for which there was an association between stress-induced changes in baseline DNA methylation and transcription. These included 20 different lncRNAs, perhaps reflecting the complex and interactive nature of epigenetic modifications, since lncRNAs constitute an additional layer of epigenetic regulation at the transcriptional and post-transcriptional level [57]. There were also 12 genes which were similarly influenced by both types of stress, and overall functional analysis again revealed enrichment of ion transport and cellular signalling pathways. Similarly, we found evidence of stress-induced methylation differences (promoters or gene bodies) for a small proportion of the genes for which a significant interaction between stress and LPS response was identified. These included a number of genes involved in ubiquitination, which regulates a wide range of biological processes including the immune system, and transcriptional regulation.

Our results suggest that direct associations between promoter or gene body methylation and expression are likely to occur only on a gene-specific basis, for a limited number of genes. However, this small proportion of genes consistently appears to include components of key signalling and regulatory pathways, suggesting this may potentially influence a diverse array of cellular processes. We found limited evidence for stress-induced alterations in the methylome corresponding to direct observed alterations in transcriptional immune response to LPS. However, there was a functional overlap between gene pathways with stress-induced changes in methylation and those central to the inflammatory immune response to LPS, namely terms related to cellular adhesion/the ECM and signal transduction. This suggests that, potentially, less direct mechanisms of epigenetic regulation involving DNA methylation may play a wider role in mediating the long-lasting effects of both acute and chronic stress on the immune

response to pathogen challenge. These mechanisms, for example, may include DNA methylation in other features such as lncRNAs and far-distant enhancer regions, which have variable and context-specific regulatory effects on gene expression, as well as interactive effects between DNA methylation and other epigenetic modifications.

The contrasting effects of the acute and chronic stress observed might also reflect the fact that the stressors were of a different nature (cold/air exposure v. lack of tank enrichment), were applied at different stages of development (embryo v. larval), and gave differential opportunity for recovery after stress exposure. While we selected each stressor based on anticipated fish sensitivity, future studies could focus on assessing the relative importance of these factors, for example by comparing acute and chronic stress during both embryonic and larval stages. This would establish the most sensitive periods to acute and chronic stress, and allow direct mechanistic comparison between the two stressors. Furthermore, characterising the effects of acute and chronic stress on the brain-sympathetic-chromaffin cell axis and the brain-pituitary-interrenal axis, which facilitate stress response in fish, would provide critical mechanistic insight into how these stressors cause distinct and contrasting effects on the gill transcriptome, methylome and immune response. Furthermore, while our experimental design included multiple families in order to rule out family-specific effects, we did not assess the contribution of family-specific responses and genetic variation on our results. This may be an important avenue for future studies, given the increasing awareness on the importance of the relationship between epigenome and the genetic background [58,59].

## Conclusions

In summary, we found that acute stress applied during embryogenesis and chronic stress experienced during larval development induced contrasting effects on gill transcription and immune response in Atlantic salmon. Acute and chronic stress also induced considerable changes in the baseline methylome, including modulation of similar cellular signalling pathways suggesting that these may be common targets of stress-induced epigenetic regulation with the potential

for far-reaching effects on cellular processes. However, the specific patterns of methylation change at the individual CpG level were very different between acute and chronically stressed fish, suggesting that stressor types differ in fine level epigenetic regulation. As expected, we found that stress-induced changes in the methylome were only directly associated with transcriptional differences, and transcriptional responses to LPS, for a small proportion of genes. However, at the gene-pathway level, we present evidence for stress-induced differential methylation in the key signaling and regulatory networks involved in transcriptional response to a pathogen challenge. This suggests that stress may influence the immune response through wider, less direct, epigenetic mechanisms.

These results have important implications for health and disease management of farmed fish populations, which are commonly exposed to multiple stressors and infection challenges. They highlight the importance of considering the long-lasting effects of early life stress, even when no obvious effects on growth or body condition are apparent, and suggest that early-life stress has considerable effects on immuno-competence and disease susceptibility. Such knowledge could be used to harness the potentially stimulatory effects of acute stress on the immune system of Atlantic salmon and other commercially important fish. Our study provides the first evidence that direct and indirect epigenetic mechanisms may play a role in mediating the lasting effects of early-life stress on fish immune function.

## Materials and methods

### *Ethics statement*

All experiments were performed with the approval of the Swansea Animal Welfare and Ethical Review Body (AWERB; approval number IP-1415–6) and infection challenges were approved by Cardiff University Animal Ethics Committee and conducted under a UK Home Office License (PPL 302,876).

### *Stress experiments*

Atlantic salmon eggs were assigned at random to three experimental treatments: control, acute

environmental stress and chronic environmental stress, with two replicate groups of 500 eggs per treatment. For the duration of the experiment, fish were maintained in standard, recirculating hatchery conditions, with temperature gradually increasing from 9 °C to 11 °C and photoperiod adjusted from 10:14h to 14:10h light: dark over the duration of the study. To rule out potential family effects, eggs were obtained from 10 different families (1:1 crosses) and these were equally distributed to each experimental group.

The acute stress was applied during late embryogenesis, which is a critical phase for the development of the immune and nervous systems, and a period of enhanced sensitivity to stress [60,61]. We immersed embryos (360 DD) in iced water (0.2 °C) for five minutes and then exposed them to air (12 °C) for five minutes before returning them to normal water temperature (9 °C). We chose this stress based on previous work [22], which used a one minute iced water and one minute air exposure as part of repeated stress experiment to induce transcriptomic and epigenetic effects in Atlantic salmon, and based on our own preliminary trials in which we established that the longer (five minute) stress duration did not affect embryo survival or hatching success. The chronic stress commenced upon hatching (475 DD), when the cortisol-stress response, thought to mediate the inhibitory effects of chronic stress on the immune system [7], is present in salmonids [62]. Larvae were reared in fry troughs without the artificial hatching substrate (Astroturf) used in the control and acute stress groups for the duration of the experiment (four months). Artificial substrate is routinely used in salmon farming to mimic the natural substrate, and provides support and shelter to fish larvae. Salmonid larvae reared in bare troughs tend to show elevated cortisol levels, developmental abnormalities and impaired growth [63,64]. Full details on fish husbandry are given in the supporting information.

Daily mortalities of embryos, larvae and fry were recorded, and growth was monitored based on a subset of 20 euthanised individuals from each of the six replicate troughs at four time-points; 492, 748, 1019 and 1323 DD. At the final sampling point (1532 DD), mass and fork length of 20 fish from each tank were determined and used to

calculate Fulton's condition factor [65]. Power analysis based on our data indicates that we were able to detect a minimum difference of between 3% and 14% in body mass during the course of the experiment, based on 80% power. These values are within the range typically used for growth studies in aquaculture [66]. All gill arches from both sides of each fish were dissected out and stored in RNAlater (Sigma Aldrich, UK) at 4°C for 24 h followed by longer term storage at -20 °C for subsequent RNA/DNA extraction. At each of the five sampling points separately, the effects of stress treatment (control, acute, chronic) on fish mass, as well as condition factor at the final sampling point, were assessed using linear mixed effect models (lme function in nmle [67]) in R version 3.3.3 [68] using tank identity as a random factor to account for variation between replicate tanks.

### **Immuno-stimulation experiment**

To assess the effect of acute and chronic environmental stress on immune response, at 1532 DD we exposed salmon fry from each group to lipopolysaccharide (LPS), a pathogen-associated molecular pattern, mimicking a bacterial infection. Six fry from each replicate tank (12 per group) were exposed to 20 µg/ml LPS obtained from *Pseudomonas aeruginosa* (Sigma Aldrich, UK) for 24 h in 0.5 L tanks, each containing a static volume of aerated water. Exposure concentration and duration was selected based on previous studies [69–71] and a preliminary trial. Fish were visually monitored for any signs of behavioural change (i.e. gasping or reduced swimming activity) indicative of distress, during the course of the experiment by one person. After exposure, fry were euthanised, weighed and measured, and all gill arches were dissected out and stored in RNAlater.

### **Transcriptome and methylome sequencing**

Matched transcriptome and methylome analysis of the gill was performed at the final sampling point (1532 DD) for a total of eight fish in each of the two stress groups and the control group (24 fish in total, including four from each replicate tank). Transcriptome analysis was also performed on the gills of eight LPS-exposed fish from each of

the three experimental groups (24 fish; four per replicate tank). RNA and DNA were simultaneously extracted using the Qiagen AllPrep DNA/RNA Mini Kit, and all libraries were prepared using high quality RNA and DNA (full details given in supporting information). Transcriptomic analysis was conducted using RNA-seq; the 48 libraries were prepared using the Illumina TruSeq RNA preparation kit and sequenced on an Illumina NextSeq500 platform (76bp paired-end reads). Methylation analysis was performed using Reduced Representation Bisulfide Sequencing (RRBS); the 24 libraries were prepared using the Diagenode Premium RRBS Kit, and sequenced on Illumina NextSeq 500 (76 bp single-end reads).

### **Bioinformatics analysis**

Full details of bioinformatics analyses performed are provided in the supporting information. Briefly, for the transcriptomics analysis, following quality screening and filtering using Trimmomatic [72], high quality reads were then aligned to the Atlantic salmon genome (v GCF\_000233375.1\_ICISAG\_v2; [26,73]) using HISAT2 (v 2.1.0; [74]), followed by transcript reconstruction and assembly using StringTie (v1.3.3) [75] and extraction of non-normalised transcript read counts. Differentially expressed genes in response to stress and LPS exposure were identified using a multifactorial design in DeSeq2 [76], including the main effects of stress and LPS exposure, and their interaction, and accounting for potential variation between replicate tanks. Genes were considered significantly differentially expressed at FDR <0.05. Hierarchical clustering of all genes significantly regulated by LPS, and all genes for which a significant interaction between stress and LPS response was identified, was performed using an Euclidean distance metric and visualised using the Pheatmap package in R [77]. Functional enrichment analysis of differentially regulated genes was performed using DAVID (v 6.8; [78]), using zebrafish orthologs for improved functional annotation, and terms were considered significantly enriched with  $q < 0.05$  after multiple testing correction (Benjamini-Hochberg).

For the methylation analysis, initial read quality filtering was performed using TrimGalore [79] before high quality reads were aligned to the

Atlantic salmon reference genome and cytosine methylation calls extracted using Bismark v 0.17.0 [80]. Mapped data were then processed using SeqMonk [81], considering only methylation within CpG context, and only including CpGs with a minimum coverage of 10 reads in each of the 24 samples in the analysis. Differentially methylated CpGs (DMCpGs) were identified using logistic regression (FDR < 0.01 and > 20% minimal CpG methylation difference ( $|\Delta M|$ )). For each DMCpG, we identified the genomic location (gene body, promoter region ( $\leq 1500$  bp upstream of the transcription start site (TSS)), or intergenic region) and the context location (CpG island ( $\geq 200$  bp with GC %  $\geq 55\%$  and an observed-to-expected CpG ratio of  $\geq 65\%$ ), CpG shore (up to 2 kb of a CpG island), CpG shelf (up to 2 kb of a CpG shore)). For the DMCpGs that were within a gene, or within 2 kb (upstream or downstream) of the TSS or transcription termination site (TTS) respectively, we also performed gene function enrichment analysis as described above. To generate a more stringent list of DMCpGs for further cluster analysis between stress groups, we additionally ran t-tests for each paired comparison using a threshold of  $p < 0.01$ , to identify DMCpGs shared by both statistical methods.

### **Transcriptome-methylome integration**

To explore the relationship between the methylome and the transcriptome we performed targeted DNA methylation analysis for putative gene regulatory regions and for gene bodies, and in each case investigated the relationship between total methylation level and gene expression. For the analysis of gene bodies, we only used gene bodies containing  $\geq 5$  CpGs, each with  $\geq 10$  reads per CpG, in all 24 samples (10,017 genes covered out of 61,274 overall expressed genes; 16.3%). To increase the number of p.promoter regions included in the analysis, we used a lower threshold (regions containing  $\geq 3$  CpGs, each with  $\geq 5$  reads per CpG, in all 24 samples; 5,422 gene promoter regions covered; 8.8% expressed genes).

We performed a Spearman correlation between mean gene expression and mean DNA region-level methylation within p.promoters and, separately, within gene bodies, for all covered genes in the control group ( $n = 8$ ). Mean gene expression was

the average normalised read counts per gene, across all 8 fish in the control group, while mean DNA methylation was the average methylation level across the 8 replicates, in each case based on the average methylation percentage for that region. As there was no linear relationship between gene body methylation and gene expression, we additionally performed a generalized additive model (GAM) to investigate whether there was a non-linear relationship. GAM assumes that the smoothed component of the independent variable, rather than independent variable itself, predicts the dependent variable [82].

We also aimed to identify genes for which early life stress influenced both DNA methylation and gene transcription. For all expressed genes at the baseline time-point (i.e. not exposed to LPS), we plotted gene expression difference in each of the stress groups relative to the control group (delta expression) against the respective difference in gene body methylation and in p.promoter methylation (delta methylation). We identified genes with a marked effect of stress on both expression and methylation ( $>2$  fold delta expression and  $>5\%$  difference in methylation), based on previously described thresholds [e.g. 83, 84] and performed functional enrichment analysis as before. We also performed a Chi-square test incorporating Yates' correction to test distribution of hypo-methylated/up-regulated, hyper-methylated/up-regulated, hypo-methylated/down-regulated and hyper-methylated/down-regulated genes.

We investigated the possible role of stress-induced changes in DNA methylation in influencing transcriptional response to the immune challenge (LPS). Therefore, for all genes for which a significant interaction between stress and transcriptional response to LPS exposure was identified, we plotted delta expression following exposure to LPS relative to that in the control group against delta baseline methylation relative to the control group, and identified genes with a  $> 5\%$  difference in baseline methylation.

### **Acknowledgments**

We are grateful to Sam Fieldwick for assistance with sampling and Dr Angela Marchbank at the Cardiff Genomics Research Hub for facilitating the RRBS sequencing.



## Author's contributions

CGL, SC, TUW, SM, CvO and JC designed the study; AH provided materials for the experiment; TUW and DRB collected and analysed the data with assistance from SM, CvO and POW; TUW, DRB, CGL and SC wrote the manuscript. All authors contributed to the final version of the manuscript.

## Disclosure statement

No potential conflict of interest was reported by the authors.

## Funding

This work was funded by a BBSRC-NERC Aquaculture grant (BB/M026469/1) to CGL and by the Welsh Government and Higher Education Funding Council for Wales (HEFCW) through the Sêr Cymru National Research Network for Low Carbon Energy and Environment (NRN-LCEE) to SC.

## ORCID

Tamsyn M. Uren Webster  <http://orcid.org/0000-0002-0072-9745>

Deiene Rodriguez-Barreto  <http://orcid.org/0000-0003-2124-4488>

Cock Van Oosterhout  <http://orcid.org/0000-0002-5653-738X>

Pablo Orozco-terWengel  <http://orcid.org/0000-0002-7951-4148>

Joanne Cable  <http://orcid.org/0000-0002-8510-7055>

Carlos Garcia De Leaniz  <http://orcid.org/0000-0003-1650-2729>

Sofia Consuegra  <http://orcid.org/0000-0003-4403-2509>

## References

- Chrousos GP. Stress and disorders of the stress system. *Nat Rev Endocrinol.* 2009;5(7):374–382.
- Calcagni E, Elenkov I. Stress system activity, innate and T helper cytokines, and susceptibility to immune-related diseases. *Ann N Y Acad Sci.* 2006;1069:62–76.
- Tort L. Stress and immune modulation in fish. *Dev Comp Immunol.* 2011;35(12):1366–1375.
- Dhabhar FS. Effects of stress on immune function: the good, the bad, and the beautiful. *Immunol Res.* 2014;58(2):193–210.
- Dhabhar FS. Enhancing versus suppressive effects of stress on immune function: implications for immunoprotection and immunopathology. *Neuroimmunomodulation.* 2009;16(5):300–317.
- Cao-Lei L, de Rooij SR, King S, et al. Prenatal stress and epigenetics. *Neurosci Biobehav Rev.* 2017. <https://www.sciencedirect.com/science/article/pii/S0149763416307266>
- Silberman DM, Acosta GB, Zorrilla Zubilete MA. Long-term effects of early life stress exposure: role of epigenetic mechanisms. *Pharmacol Res.* 2016;109:64–73.
- Vaiserman AM. Epigenetic programming by early-life stress: evidence from human populations. *Dev Dyn.* 2015;244(3):254–265.
- Mattson MP, Calabrese EJ. Hormesis: a revolution in biology, toxicology and medicine. Berlin: Springer Science & Business Media; 2009.
- Monaghan P, Haussmann MF. The positive and negative consequences of stressors during early life. *Early Hum Dev.* 2015;91(11):643–647.
- Nasca C, Bigio B, Zelli D, et al. Mind the gap: glucocorticoids modulate hippocampal glutamate tone underlying individual differences in stress susceptibility. *Mol Psychiatry.* 2015;20(6):755–763.
- Hunter RG, Gagnidze K, McEwen BS, et al. Stress and the dynamic genome: steroids, epigenetics, and the transposome. *Proc Nat Acad Sci.* 2015;112(22):6828–6833.
- Nasca C, Zelli D, Bigio B, et al. Stress dynamically regulates behavior and glutamatergic gene expression in hippocampus by opening a window of epigenetic plasticity. *Proc Nat Acad Sci.* 2015;112(48):14960–14965.
- Cruceanu C, Matosin N, Binder EB. Interactions of early-life stress with the genome and epigenome: from prenatal stress to psychiatric disorders. *Curr Opin Behav Sci.* 2017;14:167–171.
- McGowan PO, Sasaki A, D'aleccio AC, et al. Epigenetic regulation of the glucocorticoid receptor in human brain associates with childhood abuse. *Nat Neurosci.* 2009;12(3):342–348.
- Papadopoulou A, Siamatras T, Delgado-Morales R, et al. Acute and chronic stress differentially regulate cyclin-dependent kinase 5 in mouse brain: implications to glucocorticoid actions and major depression. *Transl Psychiatry.* 2015;5:e578.
- Vindas MA, Madaro A, Fraser TWK, et al. Coping with a changing environment: the effects of early life stress. *R Soc Open Sci.* 2016;3(10):160382.
- Stentiford GD, Sritunyalucksana K, Flegel TW, et al. New paradigms to help solve the global aquaculture disease crisis. *PLoS Pathog.* 2017;13(2):e1006160.
- Schreck CB, Tort L, Farrell AP, et al. Biology of stress in fish. Vol. 35. Cambridge: Academic Press; 2016.
- Elliott J. The critical-period concept for juvenile survival and its relevance for population regulation in young sea trout, *Salmo trutta*. *J Fish Biol.* 1989;35(sA):91–98.
- Castro R, Jouneau L, Tacchi L, et al. Disparate developmental patterns of immune responses to bacterial and viral infections in fish. *Sci Rep.* 2015;5:15458.
- Moghadam HK, Johnsen H, Robinson N, et al. Impacts of early life stress on the methylome and transcriptome of Atlantic salmon. *Sci Rep.* 2017;7(1):5023.
- Khansari AR, Balasch JC, Reyes-López FE, et al. Stressing the inflammatory network: immuno-endocrine

- responses to allostatic load in fish. *Mar Sci Res Technol.* **2017**;1(2):856–862.
24. Gomez D, Sunyer JO, Salinas I. The mucosal immune system of fish: the evolution of tolerating commensals while fighting pathogens. *Fish Shellfish Immunol.* **2013**;35(6):1729–1739.
  25. Parra D, Reyes-Lopez FE, Tort L. Mucosal immunity and B cells in teleosts: effect of vaccination and stress. *Front Immunol.* **2015**;6(354):354.
  26. Lien S, Koop BF, Sandve SR, *et al.* The Atlantic salmon genome provides insights into rediploidization. *Nature.* **2016**;533:200–205.
  27. Chatterjee A, Ozaki Y, Stockwell PA, *et al.* Mapping the zebrafish brain methylome using reduced representation bisulfite sequencing. *Epigenetics.* **2013**;8(9):979–989.
  28. Baerwald MR, Meek MH, Stephens MR, *et al.* Migration-related phenotypic divergence is associated with epigenetic modifications in rainbow trout. *Mol Ecol.* **2016**;25(8):1785–1800.
  29. Donaldson M, Cooke S, Patterson D, *et al.* Cold shock and fish. *J Fish Biol.* **2008**;73(7):1491–1530.
  30. Ankley GT, Villeneuve DL. Temporal changes in biological responses and uncertainty in assessing risks of endocrine-disrupting chemicals: insights from intensive time-course studies with fish. *Toxicol Sci.* **2015**;144(2):259–275.
  31. Uren Webster TM, Santos EM. Global transcriptomic profiling demonstrates induction of oxidative stress and of compensatory cellular stress responses in brown trout exposed to glyphosate and roundup. *BMC Genomics.* **2015**;16:32–38.
  32. Patel J, McLeod LE, Vries RG, *et al.* Cellular stresses profoundly inhibit protein synthesis and modulate the states of phosphorylation of multiple translation factors. *Eur J Biochem.* **2002**;269(12):3076–3085.
  33. Sundin L, Turesson J, Taylor EW. Evidence for glutamatergic mechanisms in the vagal sensory pathway initiating cardiorespiratory reflexes in the shorthorn sculpin *Myoxocephalus scorpius*. *J Exp Biol.* **2003**;206(5):867–876.
  34. Zhang Z, Zhang R. Epigenetics in autoimmune diseases: pathogenesis and prospects for therapy. *Autoimmun Rev.* **2015**;14(10):854–863.
  35. Frost RA, Nystrom GJ, Lang CH. Lipopolysaccharide regulates proinflammatory cytokine expression in mouse myoblasts and skeletal muscle. *Am J Physiol Regul Integr Comp Physiol.* **2002**;283(3):R698–R709.
  36. Sepulcre MP, Alcaraz-Pérez F, López-Muñoz A, *et al.* Evolution of lipopolysaccharide (LPS) recognition and signaling: fish TLR4 does not recognize LPS and negatively regulates NF- $\kappa$ B activation. *J Immunol.* **2009**;182(4):1836–1845.
  37. Linden SK, Sutton P, Karlsson NG, *et al.* Mucins in the mucosal barrier to infection. *Mucosal Immunol.* **2008**;1:183–190.
  38. Lemmon MA, Schlessinger J. Cell signaling by receptor tyrosine kinases. *Cell.* **2010**;141(7):1117–1134.
  39. Sorokin L. The impact of the extracellular matrix on inflammation. *Nat Rev Immunol.* **2010**;10(10):712–723.
  40. Bonnans C, Chou J, Werb Z. Remodelling the extracellular matrix in development and disease. *Nat Rev Mol Cell Biol.* **2014**;15(12):786–801.
  41. Naba A, Clauser KR, Ding H, *et al.* The extracellular matrix: tools and insights for the “omics” era. *Matrix Biol.* **2016**;49(Supplement C):10–24.
  42. Ragkousi K, Gibson MC. Cell division and the maintenance of epithelial order. *J Cell Biol.* **2014**;207(2):181–188.
  43. Kan A, Hodgkin PD. Mechanisms of cell division as regulators of acute immune response. *Syst Synth Biol.* **2014**;8(3):215–221.
  44. Köberlin Marielle S, Snijder B, Heinz Leonhard X, *et al.* A conserved circular network of coregulated lipids modulates innate immune responses. *Cell.* **2015**;162(1):170–183.
  45. Smith BL, Schmeltzer SN, Packard BA, *et al.* Divergent effects of repeated restraint versus chronic variable stress on prefrontal cortical immune status after LPS injection. *Brain Behav Immun.* **2016**;57:263–270.
  46. Glaser R, Kiecolt-Glaser JK. Stress-induced immune dysfunction: implications for health. *Nat Rev Immunol.* **2005**;5(3):243–251.
  47. Turecki G, Meaney MJ. Effects of the social environment and stress on glucocorticoid receptor gene methylation: a systematic review. *Biol Psychiatry.* **2016**;79(2):87–96.
  48. Jones PA. Functions of DNA methylation: islands, start sites, gene bodies and beyond. *Nat Rev Genet.* **2012**;13(7):484–492.
  49. Hu Y, Huang K, An Q, *et al.* Simultaneous profiling of transcriptome and DNA methylome from a single cell. *Genome Biol.* **2016**;17(1):88–94.
  50. Wang H, Wang J, Ning C, *et al.* Genome-wide DNA methylation and transcriptome analyses reveal genes involved in immune responses of pig peripheral blood mononuclear cells to poly I:C. *Sci Rep.* **2017**;7(1):9709–9715.
  51. Zhong Z, Du K, Yu Q, *et al.* Divergent DNA methylation provides insights into the evolution of duplicate genes in zebrafish. *G3: Genes | Genomes | Genetics.* **2016**;6(11):3581–3591.
  52. Huang Y-Z, Sun -J-J, Zhang L-Z, *et al.* Genome-wide DNA methylation profiles and their relationships with mRNA and the microRNA transcriptome in bovine muscle tissue (*Bos taurine*). *Sci Rep.* **2014**;4:6546–6552.
  53. Lim YC, Li J, Ni Y, *et al.* A complex association between DNA methylation and gene expression in human placenta at first and third trimesters. *PLoS One.* **2017**;12(7):e0181155.
  54. Jjingo D, Conley AB, Yi SV, *et al.* On the presence and role of human gene-body DNA methylation. *Oncotarget.* **2012**;3(4):462–474.

55. Wang H, Beyene G, Zhai J, et al. CG gene body DNA methylation changes and evolution of duplicated genes in cassava. *Proc Nat Acad Sci*. 2015;112(44):13729–13734.
56. Zemach A, Kim MY, Silva P, et al. Local DNA hypomethylation activates genes in rice endosperm. *Proc Nat Acad Sci*. 2010;107(43):18729–18734.
57. Zhao Y, Sun H, Wang H. Long noncoding RNAs in DNA methylation: new players stepping into the old game. *Cell Biosci*. 2016;6:45.
58. Richards CL, Alonso C, Becker C, et al. Ecological plant epigenetics: evidence from model and non-model species, and the way forward. *Ecol Lett*. 2017;20(12):1576–1590.
59. Cheung WA, Shao X, Morin A, et al. Functional variation in allelic methylomes underscores a strong genetic contribution and reveals novel epigenetic alterations in the human epigenome. *Genome Biol*. 2017;18(1):50.
60. Uribe C, Folch H, Enriquez R, et al. Innate and adaptive immunity in teleost fish: a review. *Vet Med*. 2011;56(10):486–503.
61. Schreck CB, Tort L. 1 - The concept of stress in fish. In: Schreck CB, Tort L, Farrell AP, et al., editors. *Fish physiology*. Vol. 35. Cambridge: Academic Press; 2016. p. 1–34.
62. Barry TP, Malison JA, Held JA, et al. Ontogeny of the cortisol stress response in larval rainbow trout. *Gen Comp Endocrinol*. 1995;97(1):57–65.
63. Bates L, Boucher M, Shrimpton J. Effect of temperature and substrate on whole body cortisol and size of larval white sturgeon (*Acipenser transmontanus* Richardson, 1836). *J Appl Ichthyol*. 2014;30(6):1259–1263.
64. Hansen T. Artificial hatching substrate: effect on yolk absorption, mortality and growth during first feeding of sea trout (*Salmo trutta*). *Aquaculture*. 1985;46(4):275–285.
65. Froese R. Cube law, condition factor and weight-length relationships: history, meta-analysis and recommendations. *J Appl Ichthyol*. 2006;22(4):241–253.
66. Thorarensen H, Kubiriza GK, Imsland AK. Experimental design and statistical analyses of fish growth studies. *Aquaculture*. 2015;448:483–490.
67. nlme. Linear and nonlinear mixed effects models. Available from: <https://CRAN.R-project.org/package=nlme>.
68. R\_Core\_Team. R: A language and environment for statistical computing. Vienna, Austria.: R Foundation for Statistical Computing; 2014.
69. Sundaram AY, Consuegra S, Kiron V, et al. Positive selection pressure within teleost Toll-like receptors tlr21 and tlr22 subfamilies and their response to temperature stress and microbial components in zebrafish. *Mol Biol Rep*. 2012;39(9):8965–8975.
70. Osuna-Jimenez I, Williams TD, Prieto-Alamo MJ, et al. Immune- and stress-related transcriptomic responses of solea senegalensis stimulated with lipopolysaccharide and copper sulphate using heterologous cDNA microarrays. *Fish Shellfish Immunol*. 2009;26(5):699–706.
71. Seppola M, Mikkelsen H, Johansen A, et al. Ultrapure LPS induces inflammatory and antibacterial responses attenuated in vitro by exogenous sera in Atlantic cod and Atlantic salmon. *Fish Shellfish Immunol*. 2015;44(1):66–78.
72. Bolger AM, Lohse M, Usadel B. Trimmomatic: a flexible trimmer for illumina sequence data. *Bioinformatics*. 2014;30(15):2114–2120.
73. Davidson WS, Koop BF, Jones SJ, et al. Sequencing the genome of the Atlantic salmon (*Salmo salar*). *Genome Biol*. 2010;11(9):403–410.
74. Kim D, Langmead B, Salzberg SL. HISAT: a fast spliced aligner with low memory requirements. *Nat Methods*. 2015;12(4):357–360.
75. Pertea M, Pertea GM, Antonescu CM, et al. StringTie enables improved reconstruction of a transcriptome from RNA-seq reads. *Nat Biotechnol*. 2015;33(3):290–295.
76. Love MI, Huber W, Anders S. Moderated estimation of fold change and dispersion for RNA-seq data with DESeq2. *Genome Biol*. 2014;15(12):550–555.
77. Kolde R. Pretty heatmaps. 2015. (R package version 31–131).
78. Huang DW, Sherman BT, Lempicki RA. Systematic and integrative analysis of large gene lists using DAVID bioinformatics resources. *Nat Protoc*. 2008;4(1):44–57.
79. Kreger F. TrimGalore. A wrapper around cutadapt and FastQC to consistently apply adapter and quality trimming to FastQ files, with extra functionality for RRBS data. Available from: [https://www.bioinformaticsbabrahamacuk/projects/trim\\_galore/2016](https://www.bioinformaticsbabrahamacuk/projects/trim_galore/2016).
80. Krueger F, Andrews SR. Bismark: a flexible aligner and methylation caller for Bisulfite-Seq applications. *Bioinformatics*. 2011;27(11):1571–1572.
81. Andrews S. SeqMonk: A tool to visualise and analyse high throughput mapped sequence data. Available from: <https://www.bioinformaticsbabrahamacuk/projects/seqmonk/2007>.
82. Tao M, Xie P, Chen J, et al. Use of a generalized additive model to investigate key abiotic factors affecting microcystin cellular quotas in heavy bloom areas of lake taihu. *PLOS ONE*. 2012;7(2):e32020.
83. Muurinen M, Hannula-Jouppi K, Reinius LE, et al. Hypomethylation of HOXA4 promoter is common in Silver-Russell syndrome and growth restriction and associates with stature in healthy children. *Sci Rep*. 2017;7(1):15693–15699.
84. Lussier AA, Morin AM, MacIsaac JL, et al. DNA methylation as a predictor of fetal alcohol spectrum disorder. *Clin Epigenetics*. 2018;10(1):5–10.