

## Research Article

# Iterative Nearest Neighborhood Oversampling in Semisupervised Learning from Imbalanced Data

**Fengqi Li, Chuang Yu, Nanhai Yang, Feng Xia, Guangming Li, and Fatemeh Kaveh-Yazdy**

*School of Software, Dalian University of Technology, Dalian 116620, China*

Correspondence should be addressed to Feng Xia; [f.xia@ieee.org](mailto:f.xia@ieee.org)

Received 12 May 2013; Accepted 4 June 2013

Academic Editors: P. Melin and J. Pavón

Copyright © 2013 Fengqi Li et al. This is an open access article distributed under the Creative Commons Attribution License, which permits unrestricted use, distribution, and reproduction in any medium, provided the original work is properly cited.

Transductive graph-based semisupervised learning methods usually build an undirected graph utilizing both labeled and unlabeled samples as vertices. Those methods propagate label information of labeled samples to neighbors through their edges in order to get the predicted labels of unlabeled samples. Most popular semi-supervised learning approaches are sensitive to initial label distribution which happened in imbalanced labeled datasets. The class boundary will be severely skewed by the majority classes in an imbalanced classification. In this paper, we proposed a simple and effective approach to alleviate the unfavorable influence of imbalance problem by iteratively selecting a few unlabeled samples and adding them into the minority classes to form a balanced labeled dataset for the learning methods afterwards. The experiments on UCI datasets and MNIST handwritten digits dataset showed that the proposed approach outperforms other existing state-of-art methods.

## 1. Introduction

In recent years, the booming information technology leads to databases included a massive amount of data in different fields. Subsequently, the need for mining useful potential is inevitable. The target classes of most of these data records, called unlabeled records, are unknown, and the records with specified target classes are called labeled records. Only a small ration of records are labeled because it is very time consuming and labor intensive to obtain annotates (labels) by domain experts. In machine learning, semisupervised learning (SSL) methods [1] train a classifier by combining labeled and unlabeled samples together, which has attracted attentions due to their advantage of reducing the need for labeled samples and improving accuracy in comparison with most of supervised learning methods. However, although most existing methods have shown encouraging success in many applications, they assume that the distribution between classes in both labeled and unlabeled datasets is balanced, which may not satisfy the reality [2].

If the dataset only contains two classes, a binary classification, the class that has more samples is called the majority class, and the other one is called the minority class. Many popular SSL methods are sensitive to the initial labeled

dataset and are suffered from a severe skew of data to the majority classes. In many real-world applications such as text classification [3], credit card fraud detection [4], intrusion detection [5], and classification of protein databases [6], datasets are imbalanced and skewed.

The imbalance learning problem [7] puzzles many machine learning methods established on the assumption that every class has the same or approximate same quantity of samples in raw data. There are various methods proposed to deal with the imbalance classification problems. These methods can be classified into resampling [8], cost-sensitive learning [9], kernel-based learning [10], and active learning methods [11, 12].

Resampling methods include oversampling [13, 14] and undersampling [15] approaches, in which the class distribution is balanced by adding a few samples to the minority class or removing a few samples from the majority class, respectively.

Most existing studies on imbalanced classification focus on supervised imbalanced classification instances [8, 9, 13, 15], and there are few studies on semisupervised methods for imbalanced classification [4]. The bias caused by differing class balances can be systematically adjusted by reweighting [16, 17] or resampling [18].

Focused on the bad performance of SSL algorithm to the imbalanced learning problem, we propose a novel approach based on oversampling in consideration of the SSL's characteristic that there are abounds of unlabeled samples. Li et al. combined active learning with SSL methods that sample a few of most helpful modules for learning a prediction model in [11]. Based on above considerations, Iterative Nearest Neighborhood Oversampling (INNO) algorithm we propose in this paper tries to convert a few unlabeled samples to labeled samples for minority classes, consequently constructing a balanced or approximately balanced labeled dataset for standard graph-based SSL methods afterwards. Therefore, we aim to alleviate the unfavorable impact of typical classifiers in dealing with imbalanced dataset in SSL domain.

In this paper, we provide an effective and efficient heuristic method to eliminate the "injustice" brought by imbalanced labeled dataset. As the samples with a close affinity in a low-dimensional feature space will probably have the same label, we propose an iterative search approach to simply oversample a few unlabeled samples around known labeled samples in order to form a balanced labeled dataset. Extensive experiments on synthetic and real datasets confirm the effectiveness and efficiency of our proposed algorithms.

The remainder of this paper is organized as follows. In Section 2, we provide a brief review of existing studies of semisupervised learning and their applications on imbalanced problem. We give the motivation behind the proposed INNO in Section 3. In Section 4, we revisit some popular algorithms by giving a graph transduction regularization framework, and then we introduce our proposed algorithm INNO in details. The experimental results on some imbalanced dataset are presented in Section 5. Finally, we conclude the paper in Section 6.

## 2. Related Work

As SSL accomplishes an inspiring performance in combining a small scale of labeled samples and a large number of unlabeled samples effectively, it has been utilized in many real-world applications such as topic detection, multimedia information identification, and object recognition. For the past few years, graph-based SSL approaches have attracted increasing attention due to their good performance and ease of implementation. Graph-based SSL regards both labeled and unlabeled samples as vertices in a graph and builds edges between pairwise vertices, and the weight of edge represents the similarity between the corresponding vertices. Transductive graph-based SSL methods predict the label for unlabeled samples via graph partition or label propagation using a small portion of seed labels provided by initial labeled dataset [19]. Popular transductive algorithms include the Gaussian fields and harmonic function based method (GFHF) [20], the local and global consistency method (LGC) [21], and the graph transduction via alternating minimization (GTAM) [16]; popular inductive methods consist of transductive support vector machines (TSVM) and manifold regularization [22]. Recent researches on graph-based SSL include ensemble manifold regularization [23] and relevance feedback [24]. However, these graph-based SSL methods developed with

smoothness, clustering assumption, and manifold assumption [1] frequently perform a bad classification if provided an imbalanced dataset.

Wang et al. [16] proposed a node regularizer to balance the inequitable influence of labels from different classes, which can be regarded as a reweighting method. They developed an alternating minimization procedure to optimize the node regularizer and classification function, and they greedily searched the largest negative gradient of cost function to determine the label of an unlabeled sample during each minimization step until acquiring all predicted labels of unlabeled samples. Nevertheless, the time complexity of the algorithm is  $O(n^3)$ , and also it would be suffered from the error that occurred in classification progress, during iteration. Its modified algorithm LDST [17] revises the unilateral greedy search strategy into a bidirectional manner, which can drive wrong label correction in addition to eliminating imbalance problem.

Other graph-based SSL algorithms solve the imbalance problem mainly by resampling methods. Li et al. [2] proposed semisupervised learning with dynamic subspace generation algorithm based on undersampling to handle imbalanced classification. They constructed several subspace classifiers on the corresponding balanced subset by iteratively performing undersampling without duplication on the majority class to form a balanced subnet. However, the algorithm features high complexity in computational time.

## 3. Motivation

Transductive graph-based SSL methods propagate label information of labeled samples to their neighbors through edges to get the predicted labels of unlabeled samples. Once there is an imbalanced distribution of classes in labeled dataset, the class boundary will severely skew to the majority classes, which have a more possibility to influence the predicted labels of unlabeled samples. We draw the influence of imbalance classification result to three popular transductive GSSL methods on the two-moon toy dataset in Figure 1. The symbols " $\square$ " and " $\nabla$ " stand for classes "+1" and "-1," respectively, in raw data, and we use solid symbol to depict labeled data. Originally, class "+1" contains one labeled samples and class "-1" contains ten labeled data. In Figure 1, the impact of imbalance label distribution to aforementioned algorithms can be seen even on a well-separated dataset. The conventional transductive graph-based SSL algorithms, such as GFHF [20], LGC [21], and GTAM [16], fail to give the acceptable classification result.

Oversampling methods have been shown to be very successful in handling with imbalanced problem. However, Barua et al. [13] reported some cases of insufficiencies and inappropriateness in existing methods. They proposed MWMOTE that generated synthetic minority samples by using clustering approach to select samples according to data importance around a subnet of the minority class; however, it achieves to select minority samples around the class boundary under a large number of training sets. Plessis and Sugiyama [18] proposed a semisupervised learning method to estimate the class ratio for test dataset by combining train and

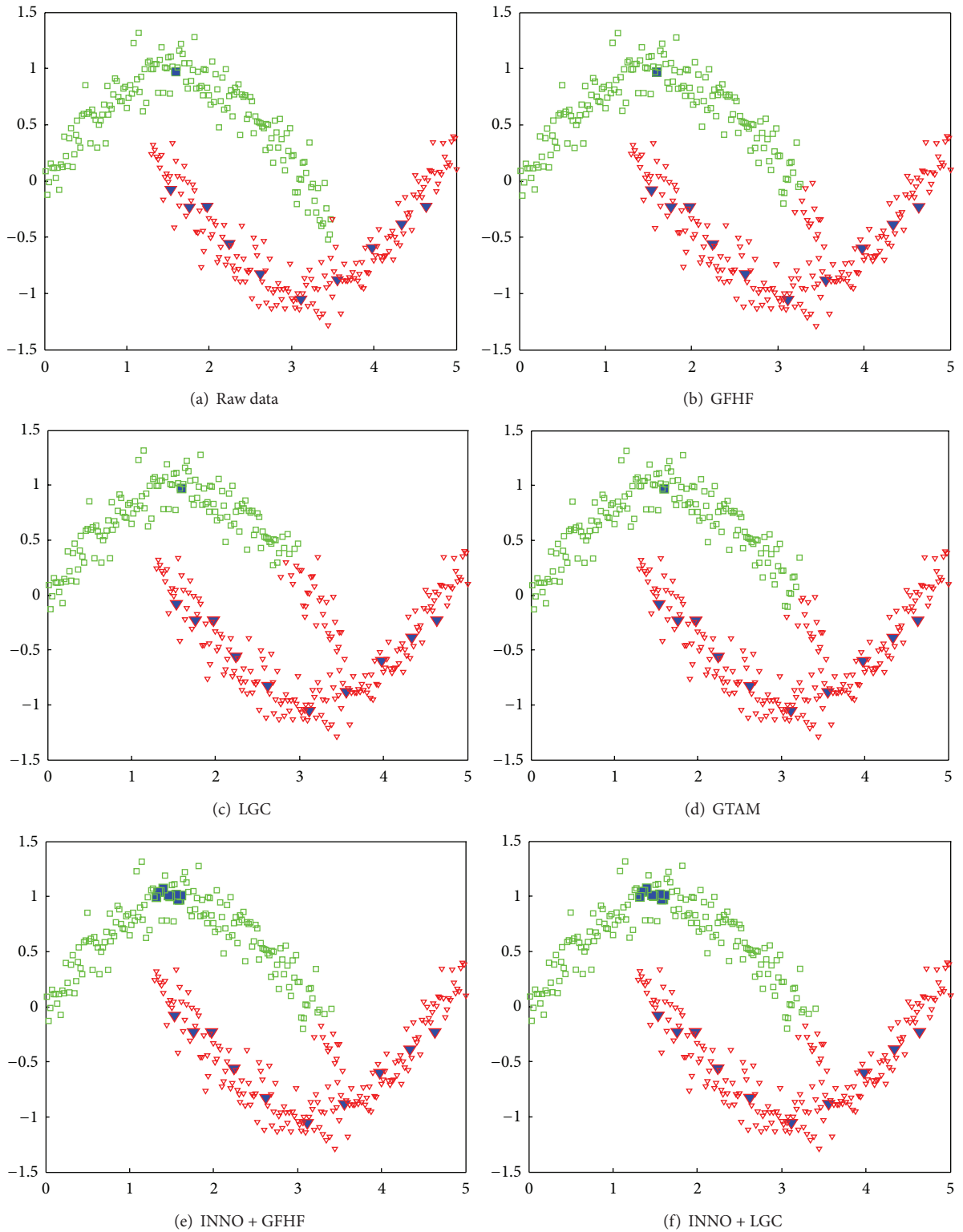


FIGURE 1: A demonstration of imbalanced label dataset affection to transductive GSSL methods on two-moon toy dataset.

test datasets in supervised learning. However, these methods are inapplicable in SSL scenario.

In order to handle with the imbalance problem of labeled dataset in SSL scenario, considering the problem of abundant

unlabeled samples in SSL domain, we proposed a simple and effective method, called Iterative Nearest Neighborhood Oversampling, to convert a few of unlabeled samples to labeled samples for minority class, which can construct

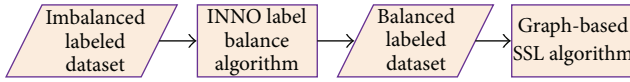


FIGURE 2: Workflow of graph-based SSL integrating with INNO.

a balanced labeled dataset for learning methods. We integrate the proposed algorithm with two popular transductive graph-based SSL methods to perform a robust classification to imbalanced problem, and the processing flow can be described as Figure 2.

## 4. Iterative Nearest Neighborhood Oversampling

**4.1. Graph-Based SSL Formulation.** Assume a raw dataset  $X = \{X_L \cup X_U\}$  contains  $n$  samples, where  $X_L = \{(x_1, y_1), (x_2, y_2), \dots, (x_l, y_l)\}$  is the labeled dataset with cardinality  $|X_L| = l$  and  $X_U = \{x_{l+1}, x_{l+2}, \dots, x_{l+u}\}$  is the unlabeled dataset with cardinality  $|X_U| = u$ , where  $l + u = n$  and typically  $l \ll u$ . Define the labels correlation to labeled dataset by  $Y_L = \{y_1, y_2, \dots, y_l\}$ , where  $y_i \in \{1, 2, \dots, c\}$  ( $i = 1, \dots, l$ ) and  $c$  is the count of different classes. The goal of SSL is to infer  $Y_U = \{y_{l+1}, y_{l+2}, \dots, y_{l+u}\}$  of unlabeled samples by combining  $X_L$  and  $X_U$ .

Graph-based SSL formulates an undirected graph  $G = \{X, E, W\}$  in which the vertex set is  $X = \{x_i \in R^d\}$  ( $i = 1, \dots, n$ ,  $d$  is the number of features) and the edge set between vertex is  $E = \{e_{ij}\}$ . The samples are treated as vertex, and the edges  $e_{ij}$  can be weighted by  $W_{ij} = k(x_i, x_j)$ , where  $k(x_i, x_j)$  could be a similarity measure such as Euclidean distance, RBF distance, or cosine distance; thus, the weight matrix can be represented as  $W = \{W_{ij}\}$ .

Define the graph Laplacian  $\Delta = D - W$  and the normalized graph Laplacian by  $L = D^{-1/2} \Delta D^{-1/2} = I - D^{-1/2} W D^{-1/2}$ , where  $D = \text{diag}\{D_{11}, D_{22}, \dots, D_{nn}\}$  is the node degree matrix with diagonal element  $D_{ii} = \sum_j W_{ij}$ . The binary label matrix  $Y = \{Y_{ij} \in B^{n \times c}\}$  is set as  $Y_{ij} = 1$  if  $x_i$  is labeled as class  $j$  and  $Y_{ij} = 0$  otherwise.

Most graph-based SSL methods perform label propagation procedure based on manifold assumption; that is, the labels are smooth on the graph. Therefore, they essentially estimate a classification function  $\{F : X \rightarrow R^{n \times c}\}$  constrained to give the true label for labeled samples and give smooth labels over the whole graph. Mathematically, graph-based SSL methods formulate a regularization framework by a cost function as follows:

$$Q\{F\} = Q_l(F) + Q_s(F), \quad (1)$$

where  $Q_l(F)$  is a loss function to penalize the deviation from the given labels and  $Q_s(F)$  is regarded as the smooth regularizer to prefer the label smoothness. The optimal  $F^* = \arg \min_{F \in \mathbb{F}} Q(F)$  can be calculated by minimization of the cost function  $Q\{F\}$ . Therefore, different graph-based SSL methods can be obtained by assigning different loss functions and regularizers to  $Q_l(F)$  and  $Q_s(F)$ .

**4.2. Methodology.** In real-world applications, labeled samples are always sampled according to normalization distribution. Labels of samples in some classes are easy to obtain, and in others they are not, even if they are of the same important level. To deal with the imbalance classification problem in semisupervised learning scenarios, we assume that there are lots of unlabeled samples around a labeled sample in a low-dimensional feature space. Therefore, we can select a few unlabeled samples for the minority class to form a balanced dataset. We describe our oversampling model as follows.

Consider the multiclass classification scenarios; let  $r = \{r_1, r_2, \dots, r_c\}$  denote the size set of labeled samples in labeled dataset, where  $r_j$  ( $j = 1, \dots, c$ ) is the number of labeled samples in class  $j$ . We use standard variance  $\text{var}(r)$  to represent the dispersion degree of the quantity of labeled samples in each class, and the imbalance ratio  $\text{var}(r)$  can be described as follows:

$$\text{var}(r) = \left( \frac{1}{c} \sum_{j=1}^c (r_j - \bar{r})^2 \right)^{1/2}, \quad (2)$$

where  $\bar{r} = (1/c)r_{\text{sum}}$ ,  $r_{\text{sum}} = \sum_{j=1}^c r_j$ .

We propose a novel approach to iteratively increase the labeled samples of the minority class, named Iterative Nearest Neighborhood Oversampling (INNO), in order to eliminate the adverse influence of imbalanced labeled dataset. During iteration, we obtain the class  $j$  containing the smallest number of labeled data and traverse  $k$  neighbors of each labeled samples in class  $j$  to select the most similar sample to all labeled samples of class  $j$  in the unlabeled dataset. The most similar sample can be defined as

$$x_{\max k} = \arg \max_{x_k \in X_u} k(x_k, x_j), \quad (3)$$

where  $x_j$  is the labeled samples in class  $j$ .

To avoid  $x_{\max k}$  deriving from classification boundary, we skip the samples which are connected to labeled samples of remainder classes. Then, we simply label the sample  $x_{\max k}$  with class  $j$ , remove it from unlabeled dataset  $X_U$ , and add it to the labeled dataset  $X_L$ . We formalize the INNO approach as Algorithm 1.

As labeled dataset is a very scarce scale compared with unlabeled samples set in the background of semisupervised learning, it is difficult to infer the class boundary by a small number of labeled data, caused by intrinsic sample selection bias or inevitable nonstationarity. Therefore, classic oversampling methods [9, 13] are not capable in this situation, because they need to judge the informative data close to class boundary, in order to synthetically generate new samples for the minority class. On the contrary, we try to skip the unlabeled samples close to class boundary to reduce the risk of introducing reckless mistakes in SSL scenarios. So, we simply set  $r_j = r_{\max}$  if the iteration finds that all the neighbors of labeled samples in class  $j$  have edges with labeled samples in other classes; that is, no more samples will be introduced for class  $j$ . Moreover, our method is capable of multiclass classification, though most sampling methods are used to diagnose between-class imbalance problem.

**Input:**  $k$ NN graph, affinity matrix  $W$ , stop parameter  $s$ , imbalanced labeled dataset  $X_L$  and unlabeled dataset  $X_U$ ;  
**Output:** balanced or approximate balanced labeled dataset.  
**Procedure:**  
 1 while  $\text{var}(r) > s$   
 2 Initialization  $r_j = \min_{j \in 1 \dots c} r$ ,  $\max = -\infty$ ,  $\max k = 0$ ;  
 3 for each labeled sample  $x_j$  in class  $j$   
 4 for each neighbors  $x_k$  of  $x_j$   
 5 skip the  $x_k$  if it is in  $X_L$  or  $x_k$  has edges between labeled samples in other class;  
 6 if  $W_{ij} > \max$ , then update  $\max$ ,  $\max k$   
 7 end for  
 8 end for  
 9 if  $\max k = 0$  // all the neighbors of labeled samples in class  $j$  have edges with labeled samples in other classes, then  $r_j = r_{\max}$ , continue;  
 10 label  $x_{\max k}$  with class  $j$ , remove it from  $X_U$ , add it to  $X_L$ ,  $r_j = r_j + 1$ ;  
 11 end while

ALGORITHM 1: Iterative Nearest Neighborhood Oversampling (INNO).

Here we consider a binary classification demonstration in Figure 3, where the stars and circles represent the samples of majority and minority classes, respectively, and the yellow points are unlabeled samples. The imbalance ratio of labeled dataset between classes “+1” and “-1” is  $r_{+1} : r_{-1} = 2 : 4$ . We employ a  $k$ -nearest neighbor ( $k$ NN) classifier on the graph (assuming  $k = 2$ ) and only consider the neighborhood connections in class “+1”. We set the stop parameter  $s = 0$ ; that is, the iteration will stop when all classes have the same quantity of samples. As we can see, samples A and B are the initial labeled samples in minority class “+1,” and then we show the process of INNO algorithm to balance the labeled dataset. The algorithm searches all neighbor unlabeled samples of A and B, finding the closest sample C which is not in labeled dataset and has no connections to labeled samples of class “-1”; therefore, label C with “+1” remove it from unlabeled dataset, and add it into labeled dataset. The algorithm continues to search the neighbors of A, B, and C to find the sample D, but the D is connected to labeled sample of class “-1”, so it skips D and E as well. Thereby it finds sample F which satisfies all search conditions. At this moment, a balanced labeled dataset is obtained, and the algorithm ends with  $s = 0$ .

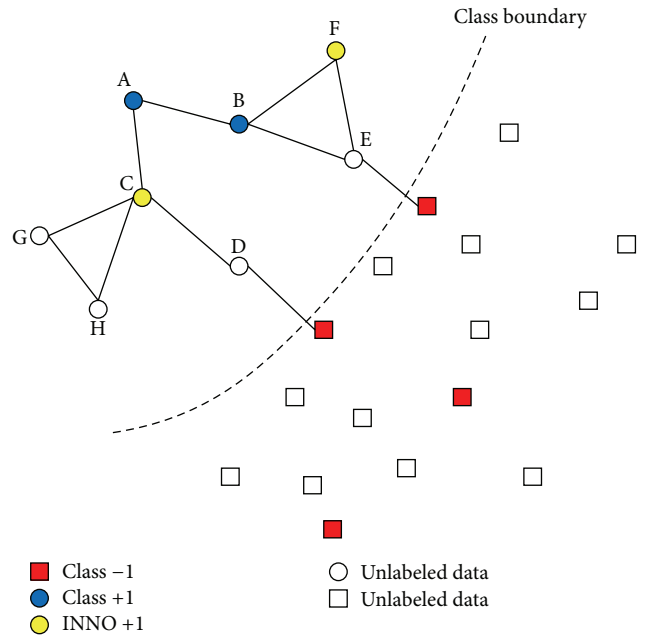


FIGURE 3: INNO algorithm illustration.

**4.3. Complexity Analysis.** Our method queries  $k$  neighbors for every labeled sample in each iteration. The time of query is  $(r_{\text{sum}} + r_{\text{sum}} \times k) \times k$ , and the time of iteration in the worst situation is  $r_{\text{max}} \times c - r_{\text{min}} \times (c - 1)$ , where  $r_{\text{max}}$  and  $r_{\text{min}}$  are the largest and smallest number of labels. The time complexity of the proposed algorithm is  $O(c \times r_{\text{max}} \times k^2 \times (r_{\text{max}}(r_{\text{max}} - 1)/2) \times k) = O(ck^3 r_{\text{max}}^3)$ . As the scale of labeled samples is small, the  $r_{\text{max}} < l \ll n$  inequality is held. Clearly, class numbers  $c$  and neighbor number  $k$  are very small, thus resulting in low computational complexity for our algorithm.

## 5. Experiments

There are many accuracy measures for evaluating the two-class classification problems, such as precision, recall,

geometric-mean ( $G$ -mean), and  $F$ -measure [24]. To evaluate the classifier performance, we calculate the accuracy by a confusion matrix as illustrated in Table 1.

According to Table 1, many performance measures can be derived and domain classes are regarded as positive and negative classes. One of the most common criteria is overall accuracy which is used for two-class classification problems in this paper.

It can be defined as

$$\text{accuracy} = \frac{TP + TN}{p + n}. \tag{4}$$

This measure provides a simple way of describing a classifier’s performance on a given dataset. Meanwhile, we



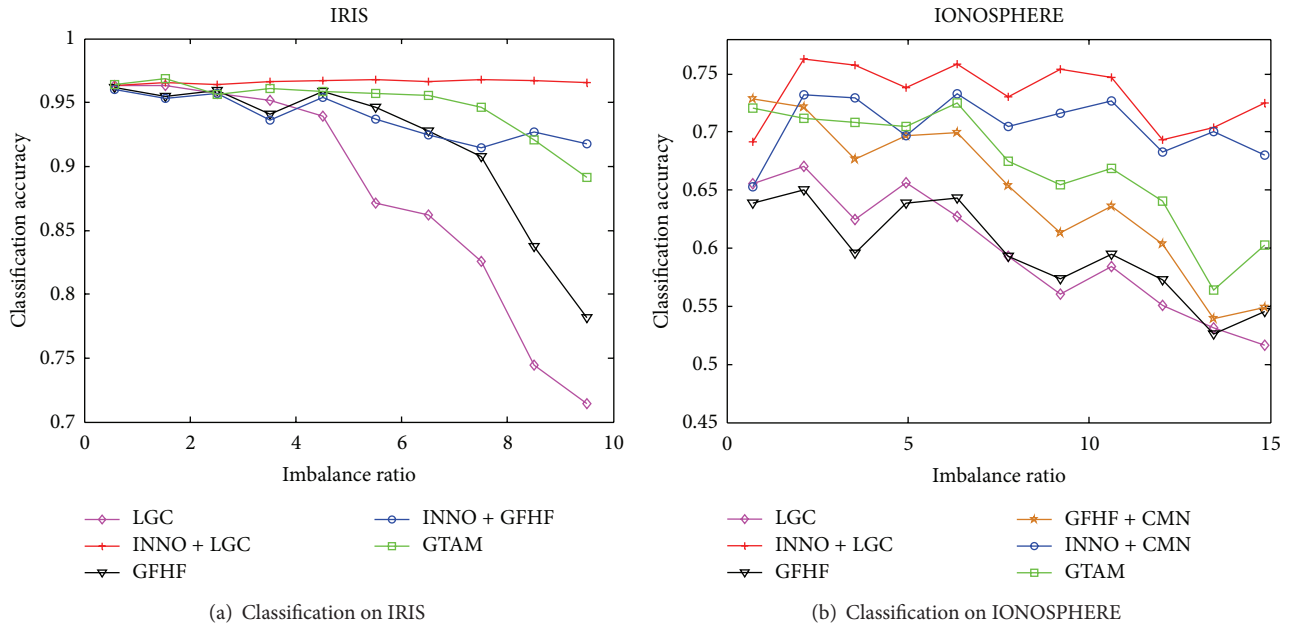


FIGURE 4: Influence of imbalanced ratio in labeled dataset to the classification accuracy.

TABLE 1: Confusion matrix.

	True class	
$Y$	TP (true positives)	FP (false positives)
$N$	FN (false negatives)	TN (true negatives)
Row sum	$p$	$n$

apply RBF kernel function  $W_{ij} = \exp(\sum_d |x_{id} - x_{jd}|^2 / \sigma^2)$  to calculate the similarity measure between samples and set parameter  $\alpha = 0.99$  in LGC [22] and  $\mu = 99$  in GTAM [15] during the experiments, and the results are the average results of 50 runs. All the experiments are run on a Dell Optiplex-380 PC with Intel Pentium dual-core processors 2.93 GHz and main memory of 3GB.

**5.1. UCI Datasets.** Firstly we evaluate the effectiveness of our proposed INNO algorithm combined with SSL methods on IRIS and Ionosphere datasets from UCI repository. Iris dataset consists of three different categories of flower, “setosa,” “versicolor,” and “virginica.” Each category contains 50 samples, and the feature dimension of a sample is 4. We fix the number of labeled samples in category “setosa” at 10 but range the number of labeled samples in category “versicolor” from 1 to 10 and also range the number of labeled samples in category “virginica” from 10 to 20. Stop parameter  $s$  is set to zero on this dataset; namely, the balance algorithm stops when the labeled dataset is completely balanced. Set  $\sigma = 0.26$  in RBF kernel function and the neighbors  $k = 5$  in  $k$ -NN. Figure 5(a) shows the classification result on IRIS.

IONOSPHERE dataset has 351 samples of “g” and “b” categories. Categories “g” and “b” contain 225 and 126, respectively, and each sample has 34 dimensions. We set the stop parameter  $s = 0$  in INNO algorithm. As the class

distribution in the original data set is not balanced, the label balance algorithm can stop at the right point where the imbalance ratio of labeled dataset is consistent with that of the original dataset. Zhu et al. proposed the CMN method in [20] to solve the negative influence to the classification result caused by imbalanced labeled dataset. We compared it with our algorithm in this paper. In this experiment, we set the size of labeled samples in category “g” to the range 12 to 21 and set the size of labeled samples in category “b” to 2–11. We set  $\sigma = 1$  in RBF kernel function and  $k = 10$  in  $k$ -NN. Figure 5(b) shows the classification accuracy on IONOSPHERE.

It can be seen in Figure 4(a) that all algorithms have high classification accuracy when each class has the same number of labeled data. As the imbalanced ratio increases between different classes in labeled dataset, classification accuracy drops gradually in GFHF, LGC, and GTAM algorithms around 70% when imbalance ratio is about 9, while the proposed INNO + GFHF and INNO + LGC algorithms remain stable, basically maintained at about 95%. Therefore, INNO algorithm shows a better robustness when dealing with imbalanced labeled dataset. We can get similar results from Figure 4(b), although GRF + CMN method can reduce the influence of imbalanced labeled dataset to classification results to some extent; it is under the assumption that the labeled dataset has the same distribution with the original data from the class definitely. Therefore, the classification accuracy drops when the class distribution in the original data is different from the class distribution in labeled dataset.

**5.2. Handwritten Digit Dataset.** In this section, we conduct two classification experiments on MNIST handwritten digit dataset. MNIST handwritten dataset has a training set of 60000 samples and a test set of 10000 samples, each sample has a pixel of  $28 \times 28$ , and each pixel is a grayscale range

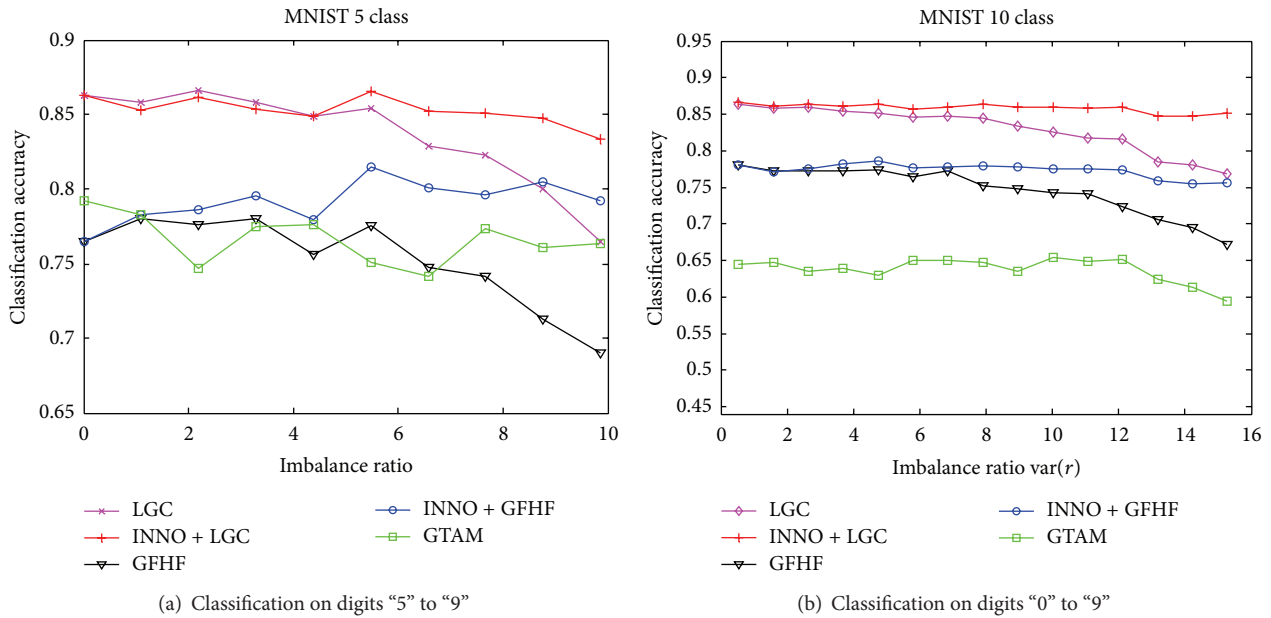


FIGURE 5: Influence of unbalanced labeled samples to the classification accuracy.

from 0 to 255. In these experiments, we combined the training and test sets together, and the pixel values of the image were used directly as features; that is, each sample has a feature number of 784. We randomly selected 200 samples of the numbers “0” to “9” from the entire data set, so the sample set has 2000 samples. We used the parameter  $\sigma = 380$  that Zhu et al. [20] set in MNIST and set the stop parameter  $s = 0$  in INNO. We selected digits “5” to “9” to conduct a 5-class experiment and digits “0” to “9” to conduct a 10-class experiment. Figure 5 shows that the classification accuracy of each algorithm curves as we continue increasing the imbalanced ratio of labeled dataset.

Figure 5 illustrates that the label balance algorithm is not necessary when the imbalanced ratio approximates to 0; therefore, LGC, INNO + LGC, GFHF, and INNO + GFHF algorithms have the same classification accuracy; namely, the algorithm we propose will not affect the accuracy of the original algorithm when the labeled dataset is balanced at the beginning. While the classification accuracy of GFHF, LGC, and GTAM is decreased significantly when the imbalance ratio increases gradually, INNO + GFHF and INNO + LGC raised in the figure show a stable performance. It also can be seen that the experiments on digits “5” to “9” and digits “0” to “9” show that the accuracy of GTAM algorithm decreases along with the class numbers increasing obviously, while others do not.

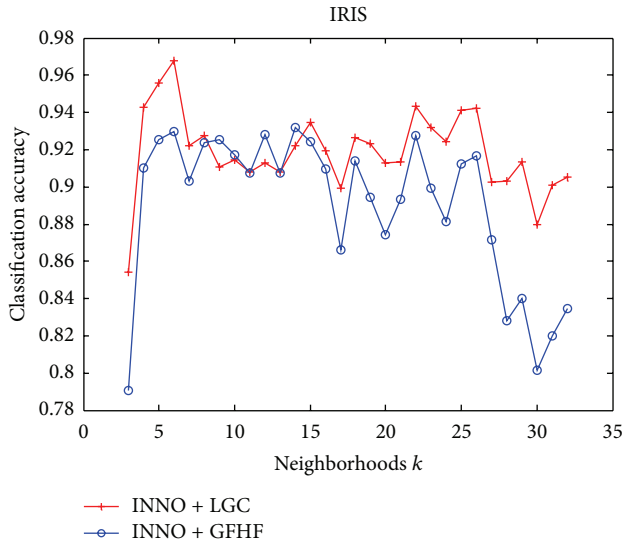
**5.3. Parameter Discussion.** Intuitively, the number of neighbors,  $k$ , will affect the result of INNO algorithm. To validate this conjecture, we perform an experiment on the UCI datasets. We fix the imbalanced ratio of labeled dataset at 10 : 1 : 20 with categories “setosa”, “versicolor,” and “virginica” on IRIS dataset, so  $\text{var}(r) = 9.50$ , and fix the imbalanced ratio of labeled dataset at 23 : 2 between classes “g” and “b”

on IONOSPHERE dataset, so  $\text{var}(r) = 14.85$ . Set the stop parameter  $s$  to zero; the classification accuracy trends are shown in Figure 6.

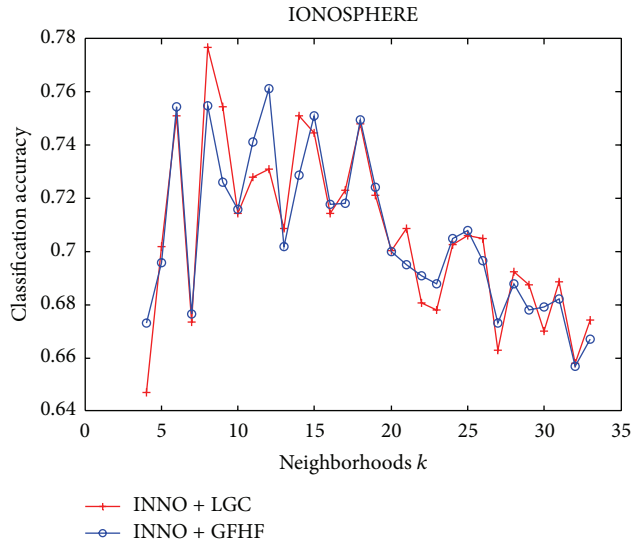
The classification accuracy is not high when  $k$  value is too small, so by increasing  $k$ , the classification accuracy increases drastically, and then the classification accuracy on IRIS fluctuates lenitively around 90%~95% when  $k$  remains in a certain region. However, if  $k$  continues to increase, the classification accuracy begins to drop severely down to 75%. It is because, when  $k$  is too large, the number of nearest neighbors is excessive, so INNO algorithm will find that all the neighbors are connected to other categories. Then INNO algorithm is unable to balance the labeled samples, resulting in lower classification accuracy.

Moreover, we consider the influence of stop parameter  $s$  to classification accuracy. We perform another experiment on IRIS and IONOSPHERE with  $k$  to 5 and 10, respectively and fix the imbalanced ratio like the above. We change the stop parameter  $s$  to observe the oscillation on classification accuracy in Figure 7. As we can see from Figure 7(a), it shows little improvement of the classification accuracy when the stop parameter and the original imbalanced ratio are nearly the same. At this point, INNO algorithm does not convert enough unlabeled samples into labeled data. The labeled dataset tends to become more and more balanced and the classification accuracy increases quickly and falls in a certain range, when the stop parameter is decreased.

Improved classification accuracy could be achieved by choosing smaller stop condition values. But the results are not as supposed and oscillate in a certain range, as shown in Figure 7(b). One possible reason is that the INNO algorithm skips the classification boundary of unlabeled samples at algorithm step 5 if all the neighbors of labeled samples in the minority class have edges with labeled samples in other

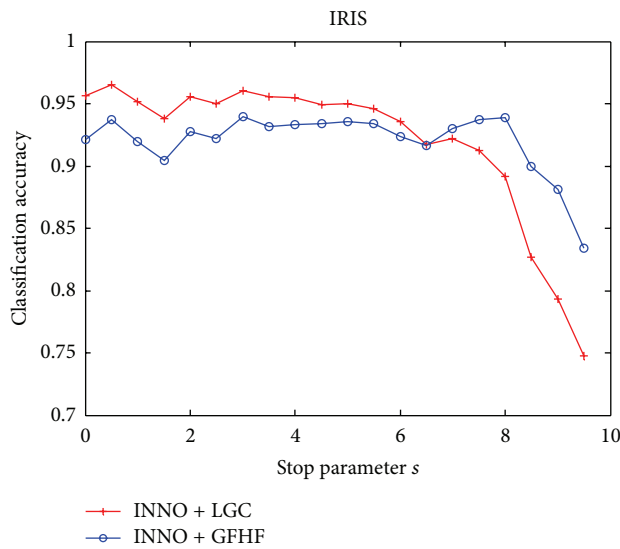


(a) Classification on IRIS

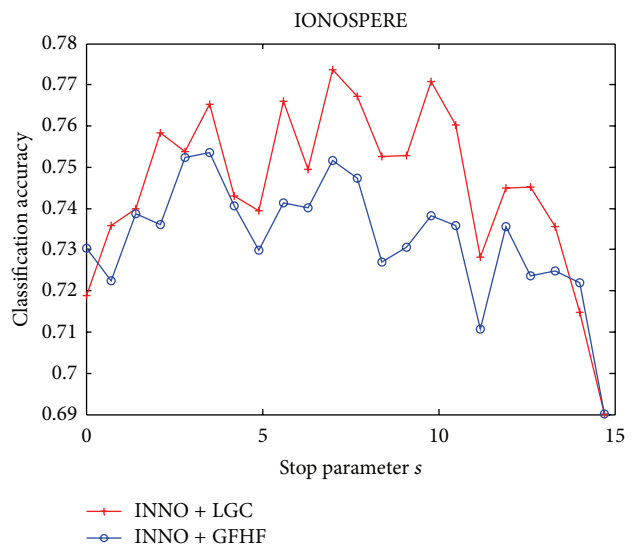


(b) Classification on IONOSPHERE

FIGURE 6: Influence of neighbors  $k$  to classification accuracy.



(a) IRIS



(b) IONOSPHERE

FIGURE 7: Influence of stop parameter  $s$  to classification accuracy.

classes. When the stop parameter becomes smaller, more unlabeled samples will be selected and the probability of the unlabeled samples close to classification boundary is higher. As the algorithm searched the neighbors of labeled samples in the minority class, the labeled number of the current class will be simply set to  $r_{max}$  at the algorithm step 9; therefore, it will not introduce new labeled samples in this class. Taking into account the randomness of labeled samples selected from raw data by algorithm, we cannot foresee the occurrence of such a situation [18]; namely, the imbalanced output may also occur even if the stop condition  $s$  is 0, so the classification accuracy ranges in a certain scope.

## 6. Conclusion

In classification scenarios, state-of-art semisupervised learning methods estimate a classification function on the assumption that there is a balanced distribution in labeled and unlabeled datasets. However, the class boundary will be severely skewed by the majority class in an imbalance between-class classification, which is proved by the experiments on UCI datasets and MNIST digit recognition.

As the bias caused by disproportionately imbalanced dataset adjusted by resampling or reweighting, we proposed the INNO algorithm to settle down this imbalance problem



simply and effectively, which eliminates the “injustice” brought by imbalanced labeled dataset to popular transductive graph-based SSL methods. Our method iteratively searches the neighbors of labeled samples in the minority class to seek out the nearest neighbor to all labeled samples of the minority class and try to skip the unlabeled samples close to the class boundary. Therefore, we can construct a balanced or approximately balanced labeled dataset for the learning methods. The experiments show a better classification result of SSL methods combined with INNO.

## References

- [1] O. Chapelle, B. Schölkopf, and A. Zien, Eds., *Semi-Supervised Learning*, MIT Press, Cambridge, Mass, USA, 2006.
- [2] S. Li, Z. Wang, G. Zhou, and S. Y. M. Lee, “Semi-supervised learning for imbalanced sentiment classification,” in *Proceedings of the 22nd International Joint Conference on Artificial Intelligence*, vol. 3, pp. 1826–1831, AAAI Press, Barcelona, Spain, 2011.
- [3] L. Zhuang and H. Dai, “Parameter estimation of one-class SVM on imbalance text classification,” *Advances in Artificial Intelligence*, vol. 4013, pp. 538–549, 2006.
- [4] C. Phua, V. Lee, K. Smith, and R. Gayler, “A comprehensive survey of data mining-based fraud detection research,” *Artificial Intelligence Review*, 2005.
- [5] R. Sommer and V. Paxson, “Outside the closed world: on using machine learning for network intrusion detection,” in *Proceedings of the 31st IEEE Symposium on Security and Privacy (SP '10)*, pp. 305–316, IEEE CS Press, May 2010.
- [6] P. Radivojac, N. V. Chawla, A. K. Dunker, and Z. Obradovic, “Classification and knowledge discovery in protein databases,” *Journal of Biomedical Informatics*, vol. 37, no. 4, pp. 224–239, 2004.
- [7] P. Chan and S. Stolfo, “Toward scalable learning with non-uniform class and cost distributions,” in *Proceedings of the International Conference on Knowledge Discovery and Data Mining*, pp. 164–168, 1998.
- [8] A. Estabrooks, T. Jo, and N. Japkowicz, “A multiple resampling method for learning from imbalanced data sets,” *Computational Intelligence*, vol. 20, no. 1, pp. 18–36, 2004.
- [9] K. M. Ting, “An instance-weighting method to induce cost-sensitive trees,” *IEEE Transactions on Knowledge and Data Engineering*, vol. 14, no. 3, pp. 659–665, 2002.
- [10] X. Hong, S. Chen, and C. J. Harris, “A kernel-based two-class classifier for imbalanced data sets,” *IEEE Transactions on Neural Networks*, vol. 18, no. 1, pp. 28–41, 2007.
- [11] M. Li, H. Zhang, R. Wu, and Z.-H. Zhou, “Sample-based software defect prediction with active and semi-supervised learning,” *Automated Software Engineering*, vol. 19, no. 2, pp. 201–230, 2012.
- [12] S. Ertekin, J. Huang, L. Bottou, and C. Lee Giles, “Learning on the border: active learning in imbalanced data classification,” in *Proceedings of the 16th ACM Conference on Information and Knowledge Management (CIKM '07)*, pp. 127–136, November 2007.
- [13] S. Barua, M. Isam, X. Yao, and K. Murase, “MWMOTE—majority weighted minority oversampling technique for imbalanced data set learning,” *IEEE Transactions on Knowledge and Data Engineering*, 2012.
- [14] N. V. Chawla, K. W. Bowyer, L. O. Hall, and W. P. Kegelmeyer, “SMOTE: synthetic minority over-sampling technique,” *Journal of Artificial Intelligence Research*, vol. 16, pp. 321–357, 2002.
- [15] X.-Y. Liu, J. Wu, and Z.-H. Zhou, “Exploratory under-sampling for class-imbalance learning,” in *Proceedings of the 6th International Conference on Data Mining (ICDM '06)*, pp. 965–969, December 2006.
- [16] J. Wang, T. Jebara, and S.-F. Chang, “Graph transduction via alternating minimization,” in *Proceedings of the 25th International Conference on Machine Learning*, pp. 1144–1151, July 2008.
- [17] J. Wang, Y.-G. Jiang, and S.-F. Chang, “Label diagnosis through self tuning for web image search,” in *Proceedings of the IEEE Computer Society Conference on Computer Vision and Pattern Recognition Workshops (CVPR '09)*, pp. 1390–1397, June 2009.
- [18] M. Plessis and M. Sugiyama, “Semi-supervised learning of class balance under class-prior change by distribution matching,” in *Proceedings of the International Conference on Machine Learning*, pp. 823–830, 2012.
- [19] W. Liu, J. Wang, and S.-F. Chang, “Robust and scalable graph-based semisupervised learning,” *Proceedings of the IEEE*, vol. 100, no. 9, pp. 2624–2638, 2012.
- [20] X. Zhu, Z. Ghahramani, and J. Lafferty, “Semi-supervised learning using Gaussian fields and harmonic functions,” in *Proceedings of the 20th International Conference on Machine Learning*, pp. 912–919, August 2003.
- [21] D. Zhou, O. Bousquet, T. N. Lal, J. Weston, and B. Schölkopf, “Learning with local and global consistency,” in *Advances in Neural Information Processing Systems*, vol. 16, pp. 321–328, MIT Press, Cambridge, Mass, USA, 2004.
- [22] M. Belkin, P. Niyogi, and V. Sindhwani, “Manifold regularization: a geometric framework for learning from labeled and unlabeled examples,” *Journal of Machine Learning Research*, vol. 7, pp. 2399–2434, 2006.
- [23] D. Tao, C. Xu, L. Yang, and X. S. Hua, “Ensemble manifold regularization,” *IEEE Transactions on Pattern Analysis and Machine Intelligence*, vol. 34, pp. 1227–1223, 2012.
- [24] Y. Yang, F. Nie, D. Xu, J. Luo, Y. Zhuang, and Y. Pan, “A multimedia retrieval framework based on semi-supervised ranking and relevance feedback,” *IEEE Transactions on Pattern Analysis and Machine Intelligence*, vol. 34, no. 4, pp. 723–742, 2012.



**Hindawi**

Submit your manuscripts at  
<http://www.hindawi.com>

