



The Texas Freedom Colonies Project Atlas & Study

Mapping the Unmapped Black Settlements of Texas

by Dr. Andrea Roberts
aroberts318@tamu.edu

The Texas Freedom Colonies Atlas (BETA)

Guidebook

www.thetexasfreedomcoloniesproject.com

August 2018





The Texas Freedom Colonies Atlas (BETA) Web Map Application Guidebook

This document provides a tutorial for users on the tools and features of the Texas Freedom Colonies Atlas (BETA) web map application.

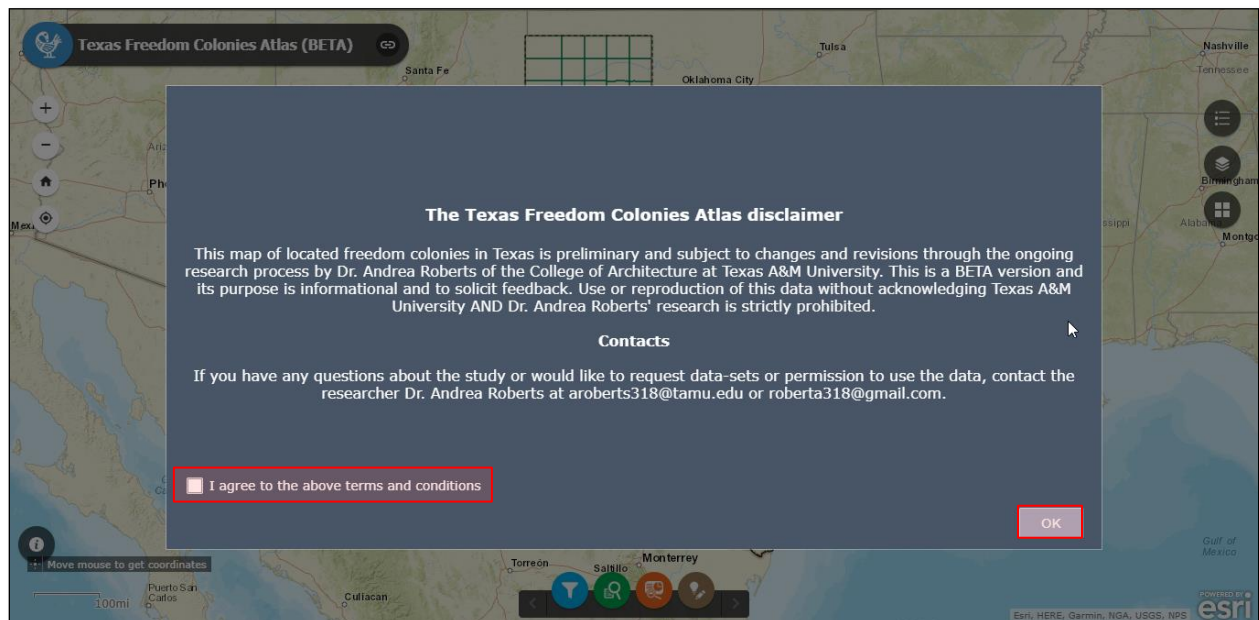
The Texas Freedom Colonies Atlas (BETA) web map application can be accessed through the Texas Freedom Colonies Project Atlas & Study web page at:

<https://spark.adobe.com/page/zOAH5v4Wcfzxx/>

or directly at:

<https://tamu.maps.arcgis.com/apps/webappviewer/index.html?id=e41ee7d3e5f84a19969ca05327586f67>

When you reach the Atlas web page, you will see the Texas Freedom Colonies Atlas disclaimer window. You have to agree to the terms and conditions and click the “OK” button to access the map.





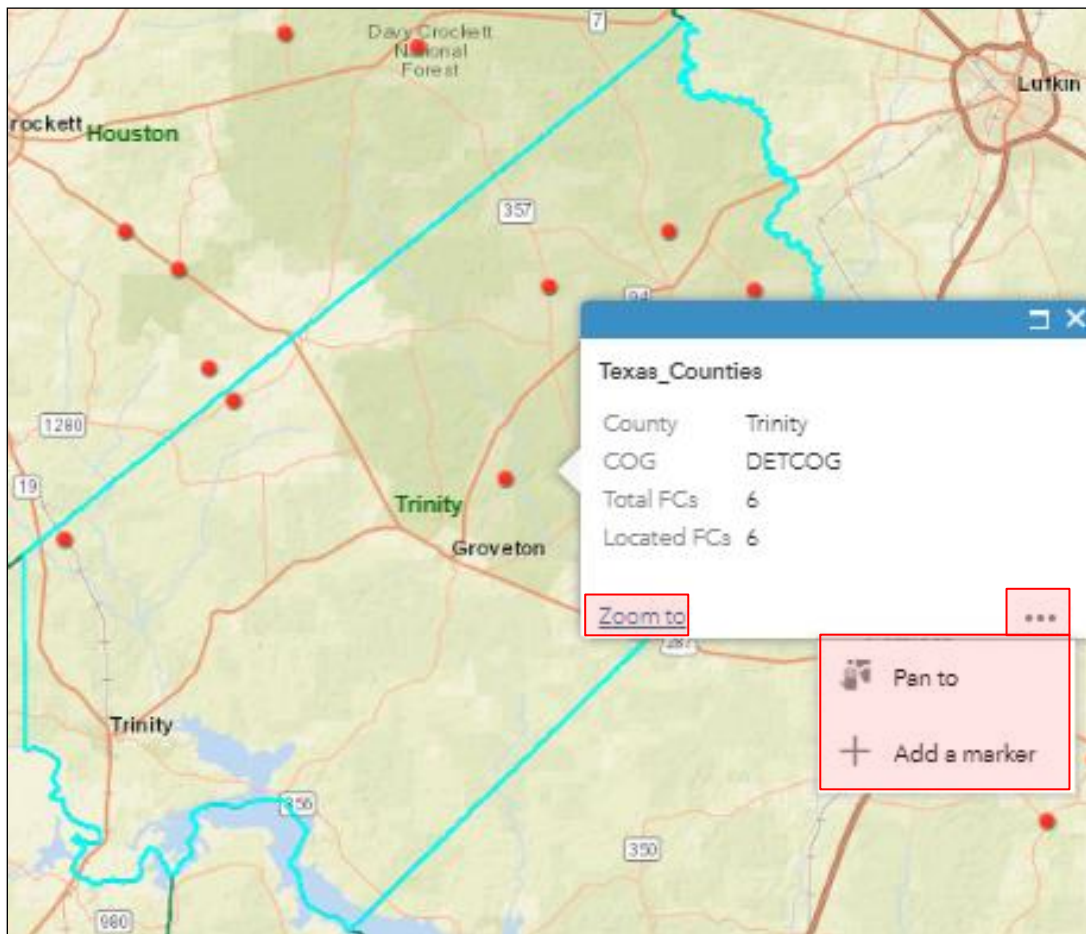
Pop-up Windows (County/Freedom Colony Profile)

You can click on a county or freedom colony to see its profile in a pop-up window. If you click on any county on the map, the county's boundary will be highlighted and a pop-up window will appear. The county profile indicates:

- County Name,
- Region (COG),
- Total number of freedom colonies on pre-study list, and
- Number of located freedom colonies as shown on the BETA map.

You can zoom to the selected county by clicking on the “Zoom to” link on the left bottom corner of the pop-up window.

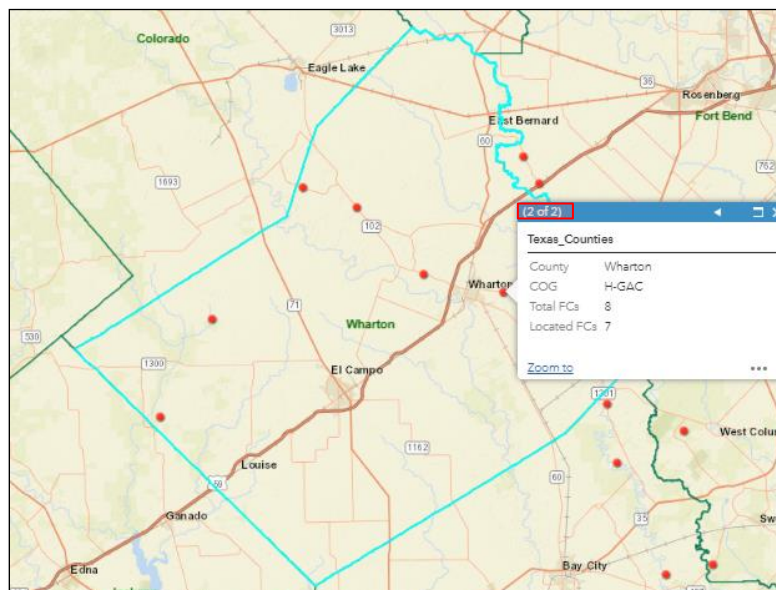
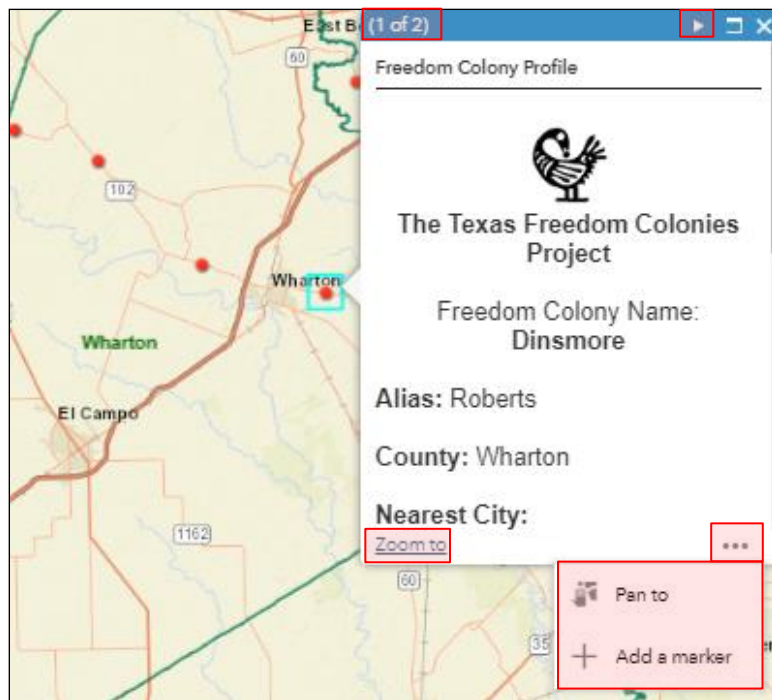
By clicking on the “...” button on the bottom right corner, you can pan the map back to your selected county in case you accidentally moved the map. You can also put a marker on a county so you can find it later. (These markers are temporarily shown on your map. They will not be added to the Texas Freedom Colonies Atlas database and cannot be seen by other users.)





You can get the pop-up window for each freedom colony by clicking on its point on the map. By clicking on a freedom colony, its point will be highlighted on the map, the pop-up window shows up, and you will have the same options as for counties to zoom to, pan to, or add a marker on a freedom colony.

When you click on a freedom colony on the map you may notice that the top ribbon of the pop-up window says (1 of 2). This means that you clicked on a point that contains two features. By clicking on the ► button on the top left, you can switch to the pop-up window for the second feature (2 of 2), which is the county.

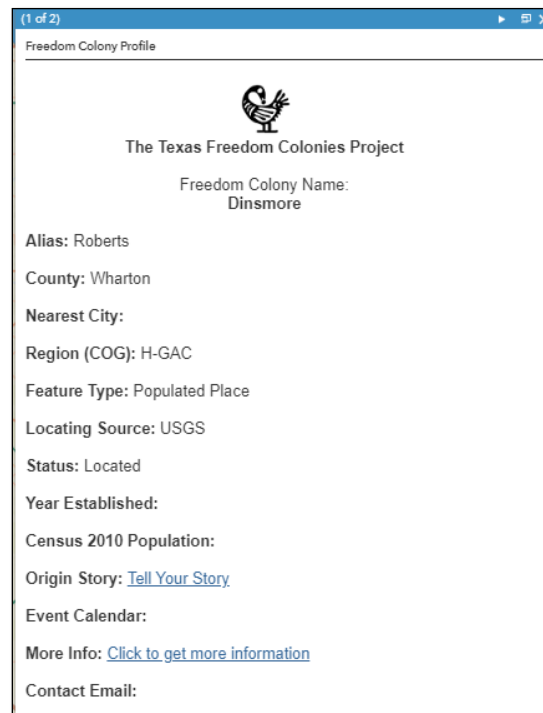




The freedom colony profile indicates:

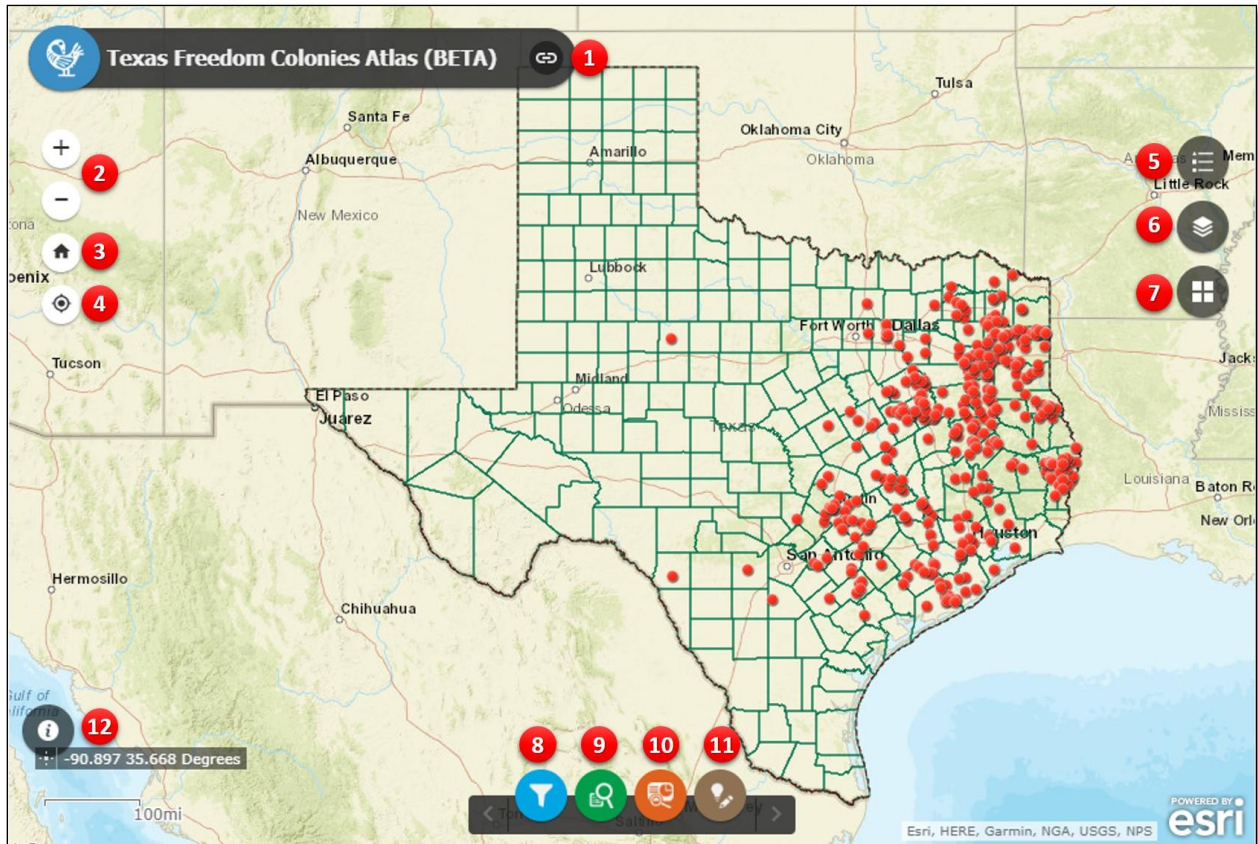
- **Freedom Colony Name:** Freedom colony's name
- **Alias:** Freedom colony's aliases and other names
- **Nearest City:** Nearest city to the freedom colony
- **Region (COG):** Council of Government in which the freedom colony is located
- **Feature Type:** Distinctive feature of the freedom colony (Populated place, Church, School, Cemetery, etc.)
- **Locating Source:** External databases that had records of that freedom colony (some freedom colonies have multiple sources listed in the locating source field)
- **Status:** Locating status for each of the freedom colonies (freedom colonies may have one of these four statuses: 1. Located, 2. Located-Relationship to African Americans Needs to be Verified, 3. Located-Inconclusive, 4. Not-Located)
- **Year Established:** Year in which the freedom colony was founded
- **Census 2010 Population:** Population of freedom colony as in Census 2010
- **Origin Story:** Links to the survey form through which you can share your story along with other information about the freedom colony (the results from the survey form will be later collected, verified, and added to the Texas Freedom Colonies Project database)
- **Event Calendar:** Links to an event calendar for the freedom colony
- **More Info:** Links to a web page with provides more information about the freedom colony
- **Contact Email:** Freedom colony representative's email if you want more information about the freedom colony.

The following is a snapshot of the pop-up window for a freedom colony.





Web Map Features and Tools



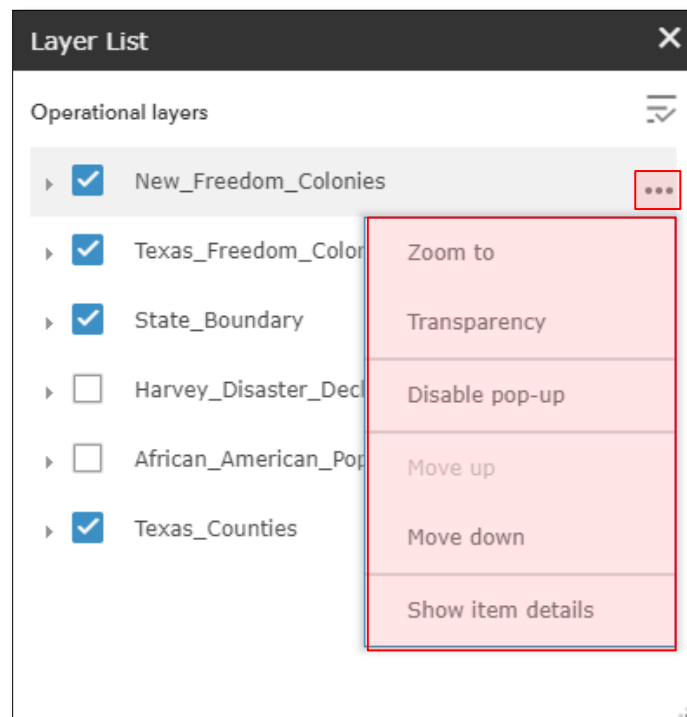
- 1 You can go back to the Texas Freedom Colonies Project Atlas & Study web page by clicking on this link.
- 2 You can zoom in/out using zoom slider buttons.
- 3 You can move the map center to your current location.
- 4 You can always go back to the home zoom extent by clicking on the home button.
- 5 You can turn the legend on or off.
- 6 You can turn on and off layers that you want from the layers list.
- 7 You can change the base map from the base maps' gallery.
- 8 You can filter freedom colonies by name or by county through using the filter tool.
- 9 You can search for a freedom colony by name or search all freedom colonies in a county.
- 10 You can create a profile report for a freedom colony or all freedom colonies in a county.
- 11 You can add a point on the map and add information in respective fields.
- 12 You can see a list of other external data sources by clicking on the “Data Sources” button.



- 5 When you turn on the legend you can see the symbols for all layers shown on the map.

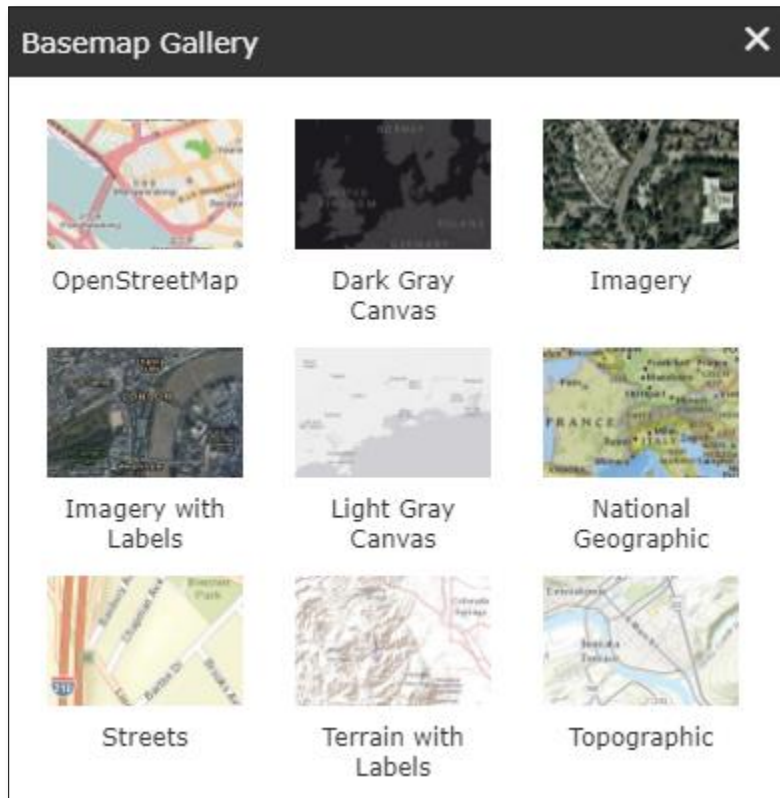


- 6 There are six layers shown on the map. You can turn the layers on or off from the layer list. By clicking on the “...” button next to each layer you have the option to zoom to the layer, set the transparency, enable/disable the pop-up window, move layer’s order, and see the layer’s details.

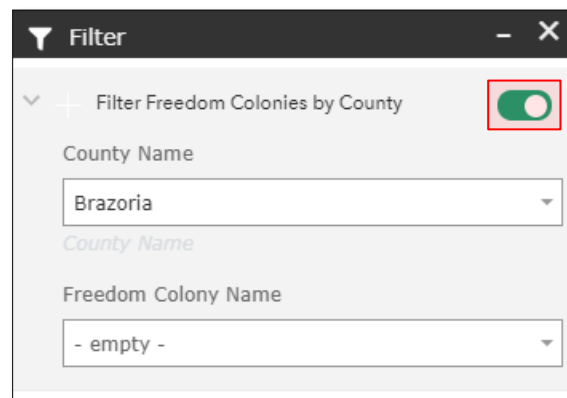
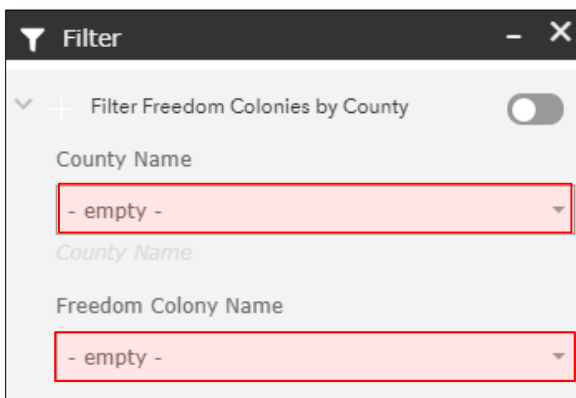




- 7 You can choose from nine maps available in basemap gallery.

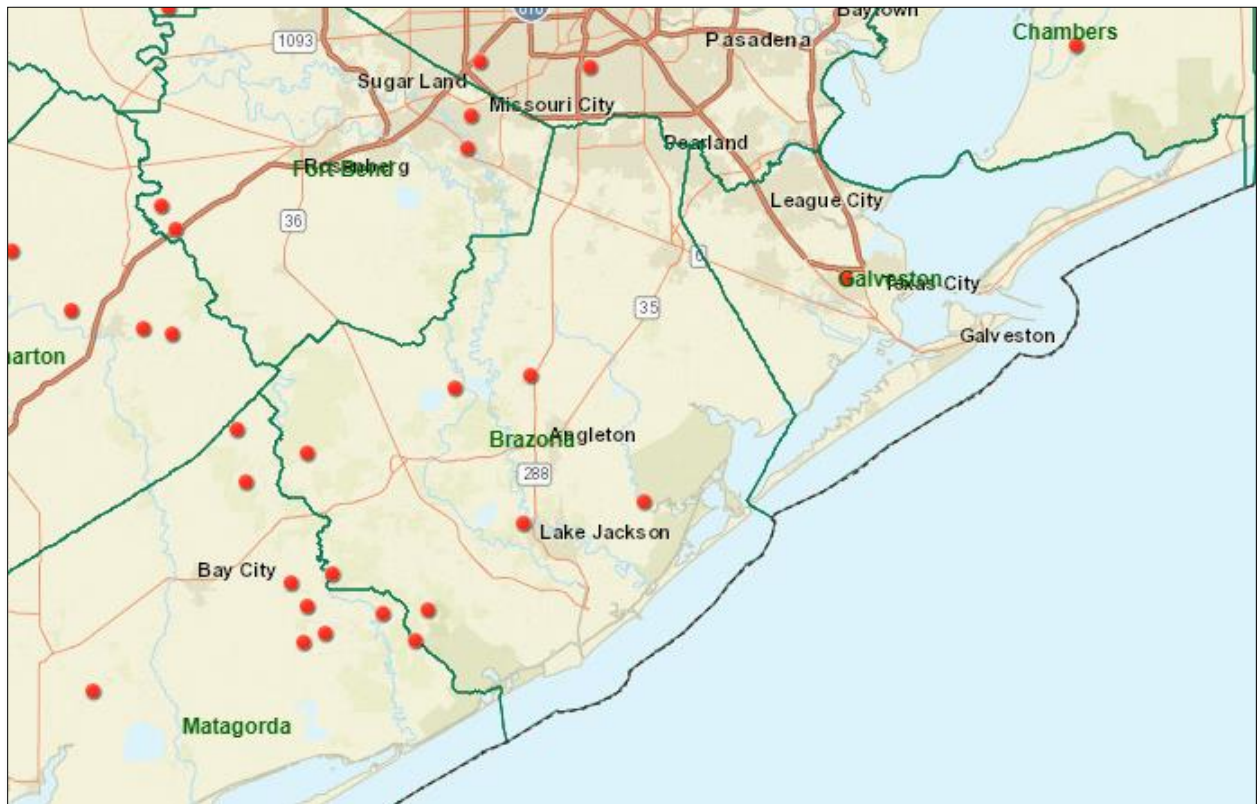


- 8 Filter tool enables you to filter the point layer shown on the map by freedom colony name or by county. You can choose a freedom colony or county from the drop-down list and turn the filter on. Turn off the filter button to remove the filter and have all points on the map.

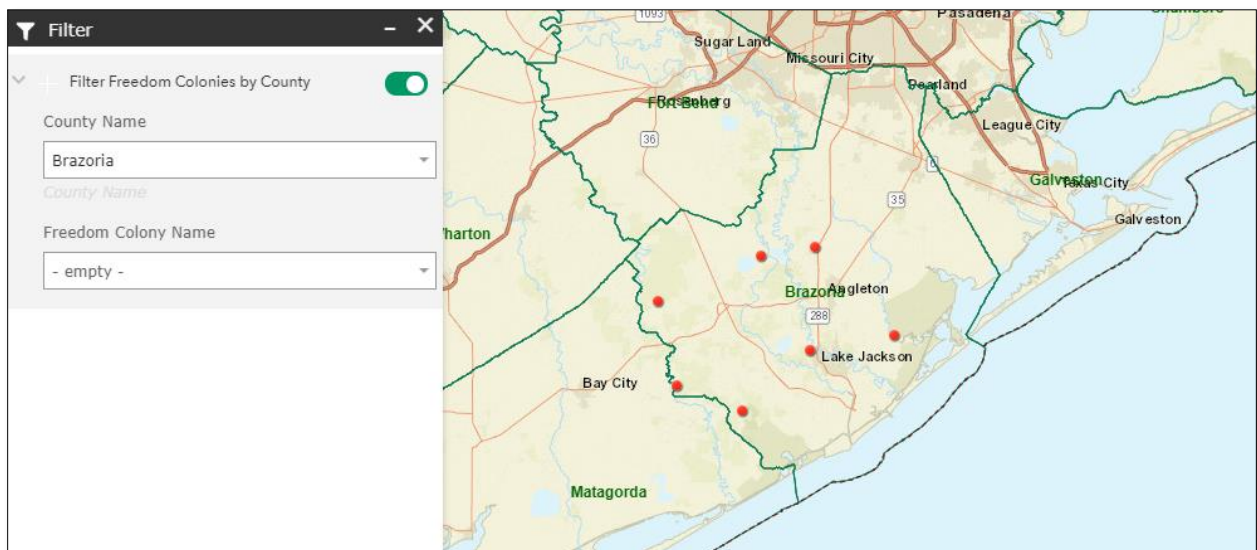




The following is a snapshot of the map without a filter that show all points on the map.

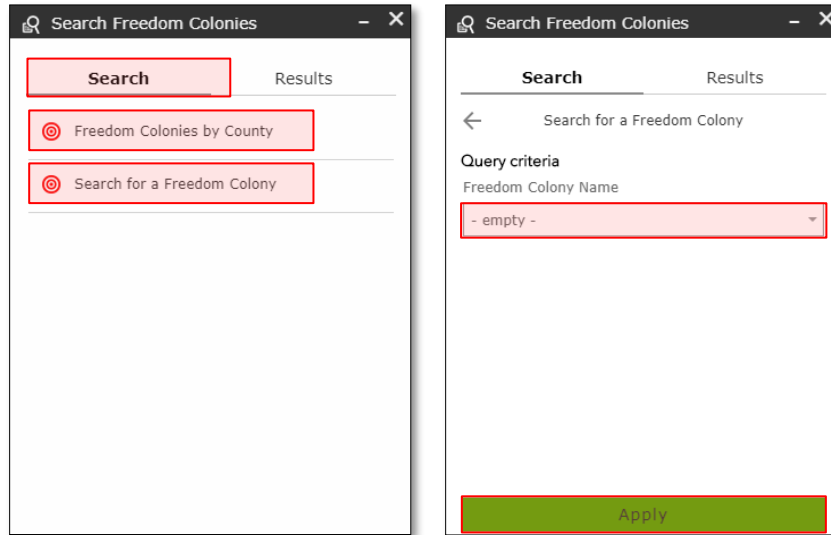


When you turn on the filter, only the points of your selected freedom colony/county will be shown on the map.





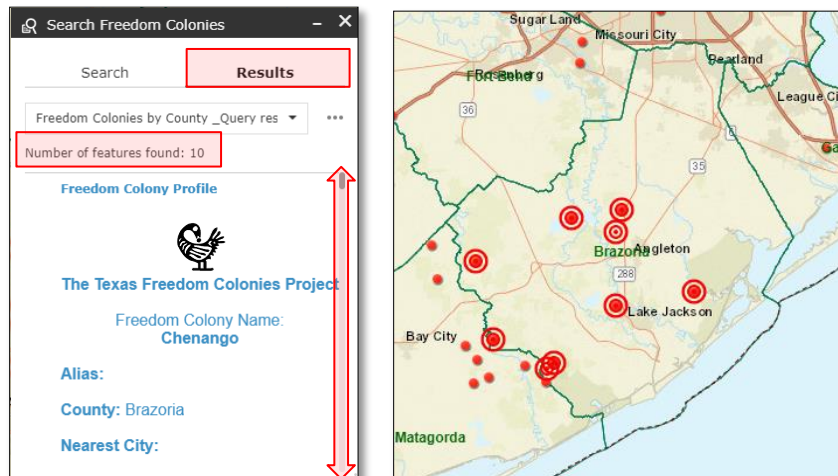
- Through the search tool you can search for a freedom colony or for all freedom colonies in a county. In the search tab, select whether you want to search for a freedom colony or for a county. On the next page, select your freedom colony or county from the drop-down list and click on the apply button.



In the results tab, you will see the freedom colony's profile or a list of freedom colonies in the county that you have searched for. If you searched for a county, you will see the number of freedom colonies in that county. You can scroll down the list to see the profile for each freedom colony.

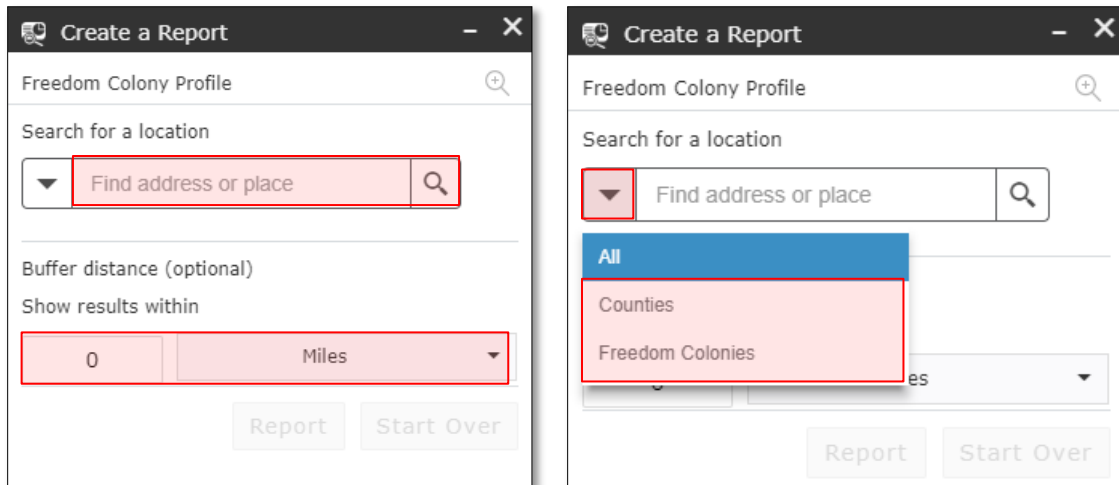
You will see that symbols for the points of freedom colonies will change on the map to reflect your search results. You have three type of points on the map:

- Freedom colonies that are not within search results.
- Freedom colonies within search results that have been located.
- Freedom colonies within search results that are whether inconclusive or their relationship to African-Americans need to be verified.

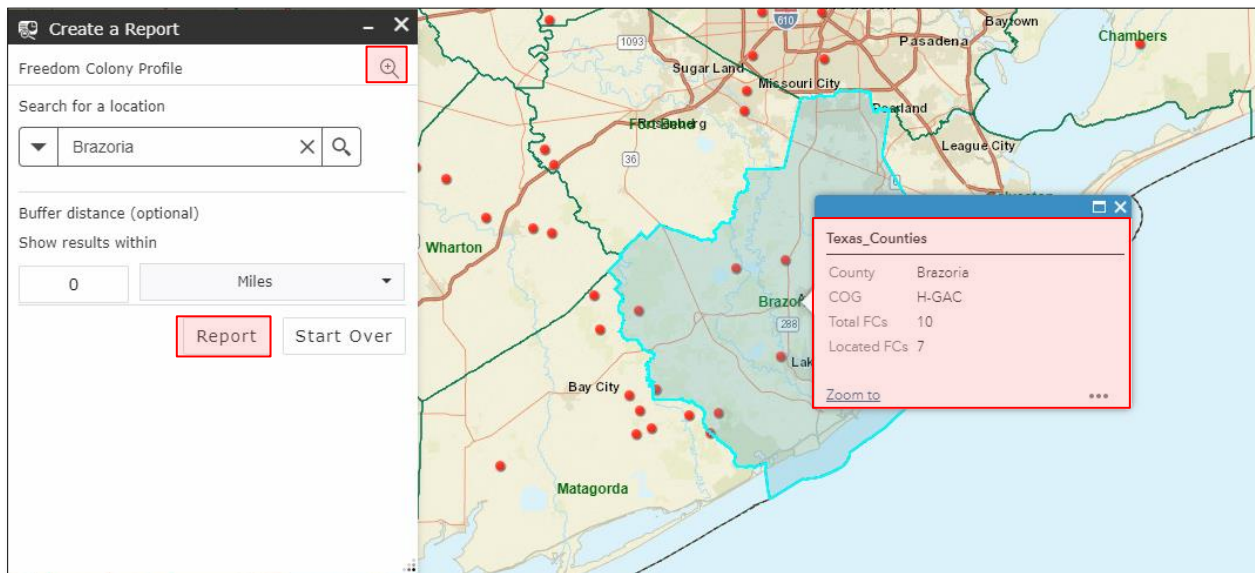




- 10 The “Create a Report” tool enables you to create and print a profile report for your selected freedom colony or county. First, you must search for a location. You can also apply a buffer distance around your searched location. You can choose to search for freedom colonies or counties.



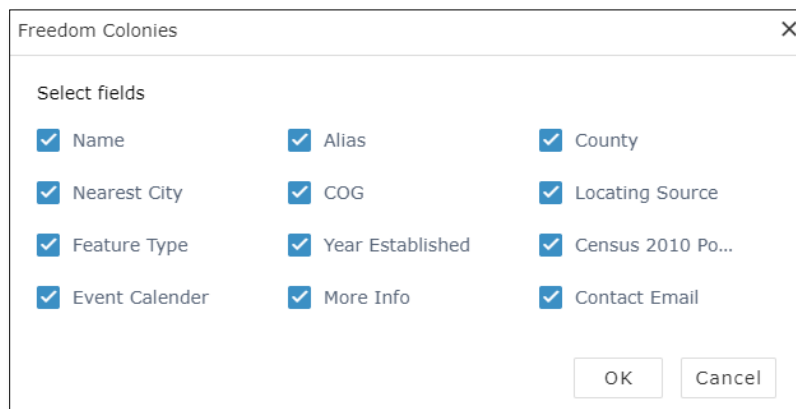
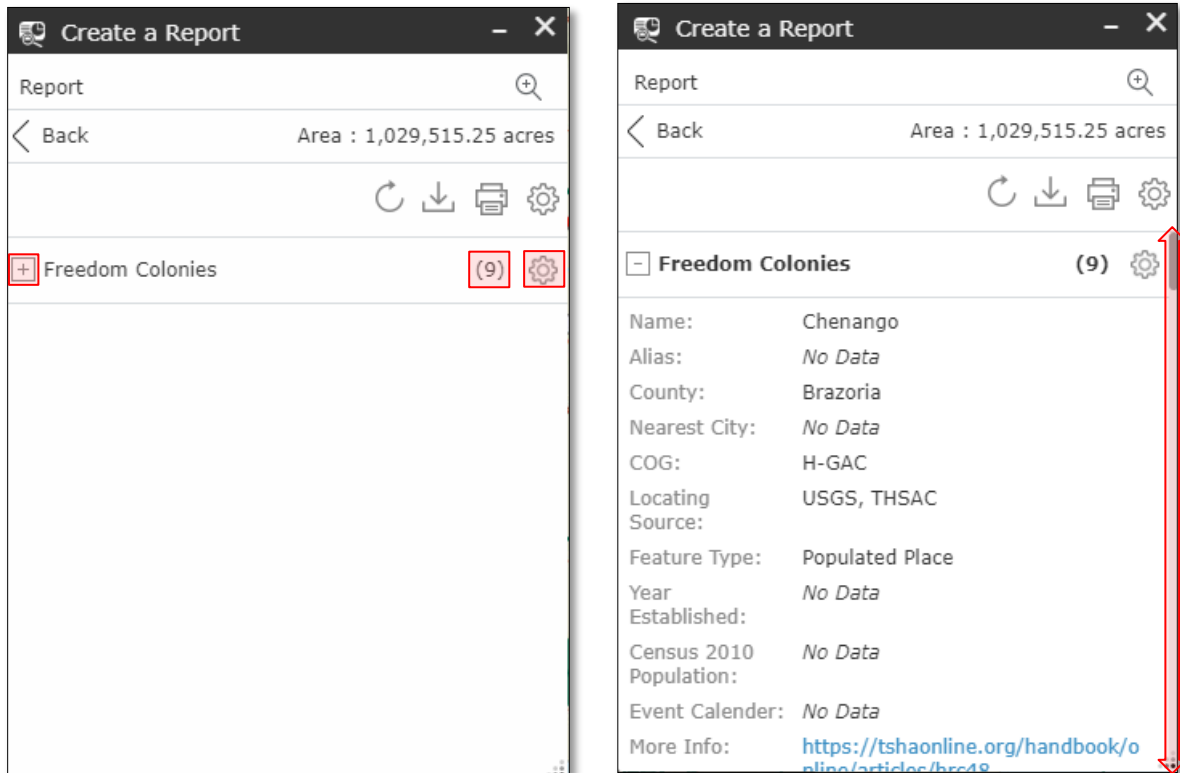
When you click on the “search” button, the map will be zoomed to the extent of the freedom colony or county that you have searched for. The freedom colony or county will be highlighted on the map and the pop-up window will be shown that provides you with the information about your searched freedom colony or county. To view or print the report you must click on the “Report” button. If you accidentally moved the map, you can move it back by clicking on the “Zoom to Location” button.





In the report page, you can see a summary of your selected location. If you looked up a county, you will see the number of freedom colonies in that county. By clicking on the “+” button you can see the information for all freedom colonies in that county. You can scroll down the list to see the profile for each freedom colony.

By clicking on the “Choose attributes to display” button you can select an attribute field that you want to include in your report for each freedom colony.





After you selected the attributes for your report, you can choose the unit for geometric analysis by clicking on the “Choose unit for analysis” button.

After defining all settings for your report, you may choose to download the report data in CSV format or print a PDF version of the report.

The screenshot shows a mobile application interface for creating a report. On the left, a 'Report' window displays details for 'Freedom Colonies' (9 items):

- Name: Chenango
- Alias: No Data
- County: Brazoria
- Nearest City: No Data
- COG: H-GAC
- Locating Source: USGS, THSAC
- Feature Type: Populated Place
- Year Established: No Data
- Census 2010 Population: No Data
- Event Calender: No Data
- More Info: <https://tshaonline.org/handbook/online/articles/hrc48>

On the right, three configuration panels are visible:

- Show results in :** A dropdown menu set to 'Miles / Acres' with a 'Close' button.
- Layout :** A dropdown menu set to 'Letter ANSI A Lan' with a 'Print' button. A note below reads: 'Note : The report title and comments can be edited in the report preview.'
- Select Format :** A dropdown menu set to 'CSV' with a 'Download' button.

If you choose to print the report, a new tab will open to show your report, including the map of your selected freedom colony or county, along with the attribute data that you have chosen in the report’s setting. Once the report has been generated, you can save it as a PDF by clicking on the “Print” button. A sample report is demonstrated on the next page.

The screenshot shows a printed report page titled 'Texas Freedom Colonies Project (Profile Report)'. At the top, it states: 'This report is designed to be printed on Letter ANSI A (8.5" X 11") Landscape Paper'. The report content includes:

- Area of Interest (AOI) Information**
- Area : 1,029,515.25 acres
- Jul 25 2018 0:37:47 Central Daylight Time
- A map showing the location of the area of interest within a regional context, including labels for counties like Brazoria, Harris, and Jefferson.

The page includes 'Print' and 'Close' buttons in the top right corner.



A sample report for Brazoria County.

7/25/2018



Texas Freedom Colonies Project (Profile Report)

Area of Interest (AOI) Information

Area : 1,029,515.25 acres

Jul 25 2018 0:37:47 Central Daylight Time



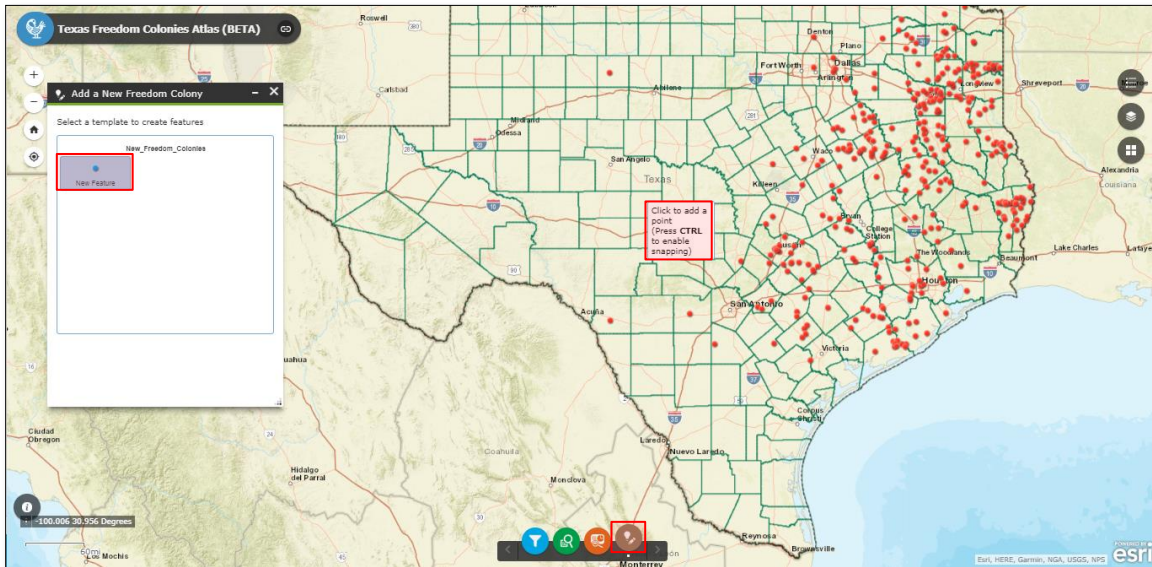
Freedom Colonies

#	Name	Alias	County	Nearest City	COG	Locating Source	Feature Type	Year Established
1	Chenango	No Data	Brazoria	No Data	H-GAC	USGS, THSAC	Populated Place	No Data
2	Cedar Grove	No Data	Brazoria	No Data	H-GAC	USGS, THSAC	Cemetery	No Data
3	Jerusalem	No Data	Brazoria	No Data	H-GAC	USGS, THSAC	School	No Data
4	Lake Jackson	No Data	Brazoria	No Data	H-GAC	CDP, NR, USGS	Populated Place	No Data
5	Anchor	No Data	Brazoria	No Data	H-GAC	USGS, THSAC	Populated Place	No Data
6	Mims	No Data	Brazoria	No Data	H-GAC	USGS, THSAC	Populated Place	No Data
7	Green Hill	No Data	Brazoria	No Data	H-GAC	USGS	Church	No Data
8	Linnville	No Data	Brazoria	No Data	H-GAC	USGS	Church	No Data
9	St. Paul	No Data	Brazoria	No Data	H-GAC	THSAC	No Data	No Data

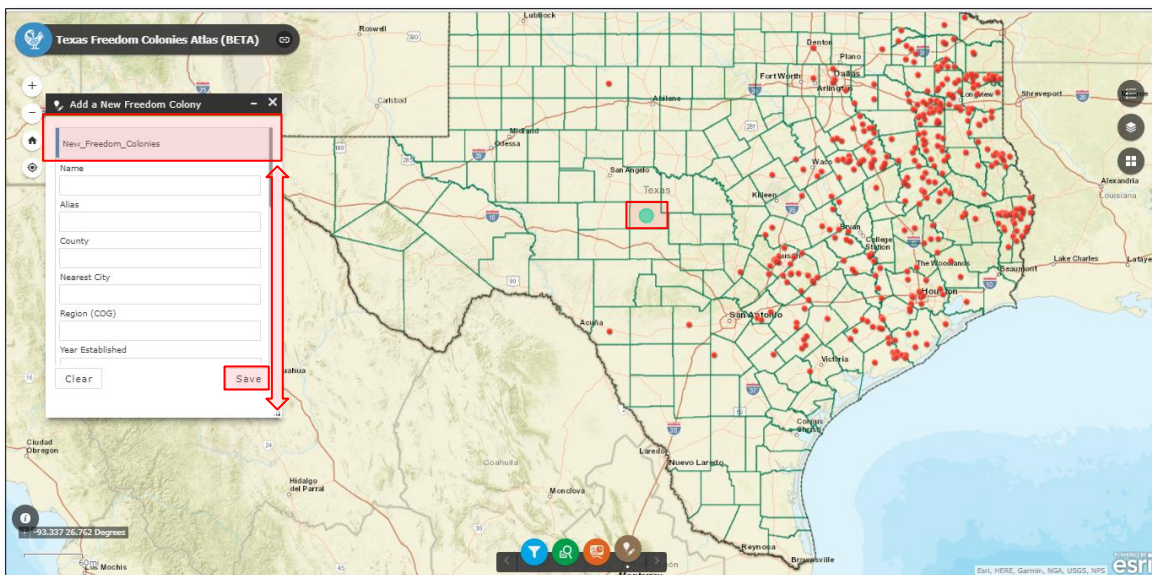


11 By clicking on the “Add a new Freedom Colony” button on the toolbar at the bottom of the page, a new window will pop up which enables you to add a point for a freedom colony that is not already on the map.

First, you should click on the “New Feature” button. Now you can click anywhere on the map to put a point.

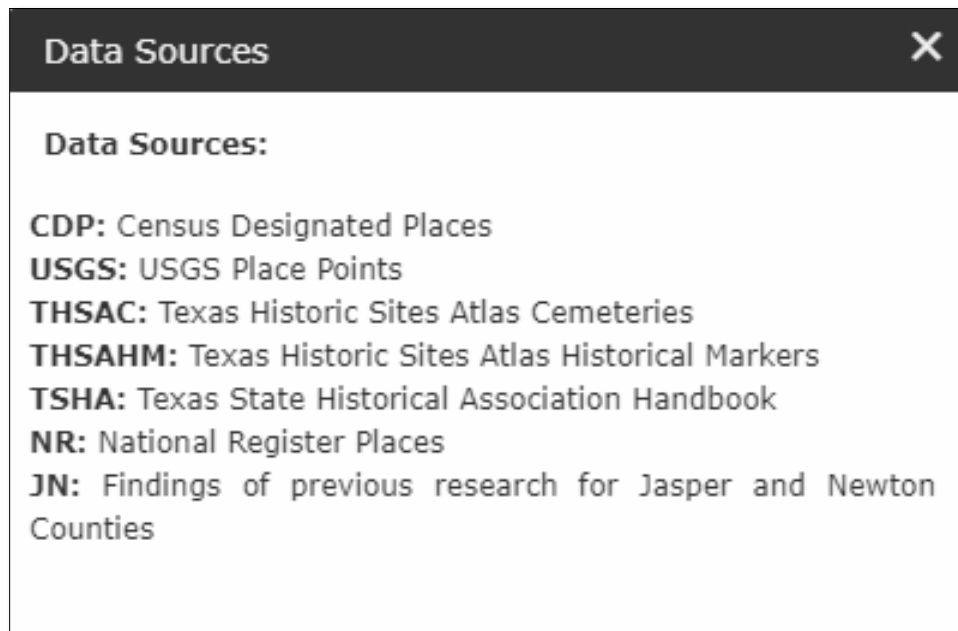


When you click on the map, a new point will be created and the attribute form will show up. Now you can fill in the form with the data and information about that freedom colony. Scroll down to see all the attribute fields. When you are done filling out the attribute form, click save to submit your freedom colony. The new freedom colony that you have submitted will appear as a point in blue color and will be seen by research team other users as well. New points will be verified by research team and will be added to the Texas Freedom Colonies Atlas after approval.





- 12 You can see a list of other external data sources by clicking on the “Data Sources” button.





*The Texas Freedom Colonies
Project Atlas & Study*

by Dr. Andrea Roberts

For more information visit project's website at:

www.thetexasfreedomcoloniesproject.com

If you have any questions you can contact researcher at:

aroberts318@tamu.edu

or contact research team at:

freedomcoloniesproject@gmail.com

