

Case Report

Marginal Zone Lymphoma Complicated by Protein Losing Enteropathy

Nadine Stanek,¹ Peter Bauerfeind,¹ Guido Herzog,¹ Henriette Heinrich,¹ Matthias Sauter,² Daniela Lenggenhager,³ Cäcilia Reiner,⁴ Markus G. Manz,⁵ Jeroen S. Goede,⁵ and Benjamin Misselwitz¹

¹Department of Gastroenterology and Hepatology, University Hospital Zurich, Zurich University, Zurich, Switzerland

²Department of Gastroenterology, Stadtspital Triemli Zurich and Zurich University, Zurich, Switzerland

³Department of Pathology and Molecular Pathology, University Hospital Zurich, Zurich University, Zurich, Switzerland

⁴Department of Radiology, University Hospital Zurich, Zurich University, Zurich, Switzerland

⁵Department of Hematology, University Hospital Zurich, Zurich University, Zurich, Switzerland

Correspondence should be addressed to Benjamin Misselwitz; benjamin.misselwitz@usz.ch

Received 4 August 2016; Accepted 13 October 2016

Academic Editor: Salah Aref

Copyright © 2016 Nadine Stanek et al. This is an open access article distributed under the Creative Commons Attribution License, which permits unrestricted use, distribution, and reproduction in any medium, provided the original work is properly cited.

Protein losing enteropathy (PLE) refers to excessive intestinal protein loss, resulting in hypoalbuminemia. Underlying pathologies include conditions leading to either reduced intestinal barrier or lymphatic congestion. We describe the case of a patient with long-lasting diffuse abdominal problems and PLE. Repetitive endoscopies were normal with only minimal lymphangiectasia in biopsies. Further evaluations revealed an indolent marginal zone lymphoma with minor bone marrow infiltration. Monotherapy with rituximab decreased bone marrow infiltration of the lymphoma but did not relieve PLE. Additional treatments with steroids, octreotide, a diet devoid of long-chain fatty-acids, and parenteral nutrition did not prevent further clinical deterioration with marked weight loss (23 kg), further reduction in albumin concentrations (nadir 8 g/L), and a pronounced drop in performance status. Finally, immunochemotherapy with rituximab and bendamustine resulted in hematological remission and remarkable clinical improvement. 18 months after therapy the patient remains free of gastrointestinal complaints and has regained his body weight with normal albumin levels. We demonstrate a case of PLE secondary to indolent marginal zone lymphoma. No intestinal pathologies were detected, contrasting a severe and almost lethal clinical course. Immunochemotherapy relieved lymphoma and PLE, suggesting that a high suspicion of lymphoma is warranted in otherwise unexplained cases of PLE.

1. Introduction

Protein losing enteropathy (PLE) comprises excessive loss of proteins into the gastrointestinal tract resulting in hypoproteinemia. A variety of conditions can result in intestinal leakage via two mechanisms [1]: (i) reduced intestinal barrier due to mucosal injury and (ii) lymphatic congestion and/or stasis resulting in increased lymphatic pressure.

Therefore, work-up of PLE includes testing for malignancy, celiac disease, inflammatory bowel-diseases, chronic infectious diseases, collagenous colitis, allergic gastroenteropathy, eosinophilic gastroenteritis, and amyloidosis [1–10]. Ménétrier's disease characterized by giant mucosal

folds in the stomach might be a common cause of PLE.

Lymphatic congestion or stasis can result in leakage of intestinal lymph into the lumen of intestinal organs. Diagnostic clues for increased lymphatic pressure include dilated lymphatic vessels (lymphangiectasia) on histological specimen. Intestinal lymphangiectasia has been described as a primary condition or as a complication of other diseases [11]. Secondary causes for increased lymphatic pressure include cardiac disease, portal hypertension, damage or injury of retroperitoneal lymph nodes, for instance, after surgery, chemotherapy or infectious or malignant conditions, or Turner's syndrome [12].

TABLE 1: Blood work at presentation in our unit.

	Value	Reference values
Hemoglobin (g/L)	163	134–170
White blood count (G/L)	9.2	3–9.6
Neutrophils	5.1	1.4–8
Monocytes	0.55	0.16–0.95
Eosinophils	0.35	0–0.7
Basophiles	0.05	0–0.15
Lymphocytes	3.3	1.5–4
Platelets (G/L)	332	143–400
Albumin (g/L)	18	40–49
Protein (g/L)	38	66–87
IgA (g/L)	0.4	0.7–4
IgG (g/L)	1.9	7–16
IgM (g/L)	0.7	0.4–2.3
Fibrinogen (g/L)	2.7	1.5–4
Transferrin ($\mu\text{mol/L}$)	13	25–50
Chromogranin A ($\mu\text{g/L}$)	1100	<85
Gastrin (ng/L)	345	13–115

We report the case of severe paraneoplastic PLE in a patient with marginal zone lymphoma but without gastrointestinal lesions. Immunochemotherapy resulted in remission of lymphoma and relief of all symptoms.

2. Case Presentation

A 47-year-old patient was referred to our outpatient clinic for evaluation of abdominal complaints since 15 years. The patient described postprandial nausea with diffuse abdominal pain and diarrhea hours after the meal. Five years ago the patient noted ankle edema and hypoalbuminemia was diagnosed.

The patient was a sportive nonsmoker. Medication included pantoprazole and vitamin supplements. Besides appendectomy the personal history was unremarkable. Physical examination revealed mild peripheral edema but no further findings.

Blood work was remarkable for hypoalbuminemia 18 g/L (norm 40–49 g/L) and mild iron deficiency. Liver and kidney function tests and a peripheral blood count were normal (Table 1). In 24 h stool measurements alpha-1 antitrypsin clearance was 432 mL/d (norm <24 mL/d), confirming protein losing enteropathy. Repetitive stool tests revealed normal calprotectin levels and no evidence for bacterial or parasitic infection. An HIV test was negative.

Chromogranin A and Gastrin were repeatedly elevated, most likely due to pantoprazole treatment and ^{68}Ga DOTATATE-PET-scan did not reveal a neuroendocrine tumor.

Repetitive upper and lower bowel endoscopy with biopsies were unremarkable without signs of Ménétrier's disease or lymphoma infiltration. Video capsule endoscopy and single-balloon enteroscopy revealed two small jejunal

ulcerous lesions with unremarkable histology. Minimal lymphangiectasia was found on biopsies of the small and large intestine (Figure 1). Extensive work-up of all biopsies did not show pathogens, intraepithelial lymphocytosis, deposition of a paraprotein, or amyloidosis. Neither in abdominal wall fat pad biopsies amyloid deposits were found. Common variable immunodeficiency has been excluded after adequate immunologic response to vaccination with diphtheria/tetanus and pneumococci.

Sprue was ruled out by serological testing, HLA analysis, and intestinal biopsies.

Echocardiogram was unremarkable.

Serum protein electrophoresis was without paraproteinemia. Immunofixation demonstrated the presence of a weak IgM-kappa band. IgM in the serum was not elevated (0.7 g/L) and free-kappa light chains were slightly elevated in the serum and the urine (19.5 mg/L, norm 3.3–19.4; urine: 29.4 mg/L, norm <7.1). Bone marrow examination was diagnostic for low-grade B cell non-Hodgkin lymphoma with minor infiltration (20%) with predominant expression of IgG- κ . Genetic work-up showed monoclonal IgH rearrangement and mutated *MYD88* with a normal karyotype. We diagnosed marginal zone lymphoma although lymphoplasmacytic lymphoma formally cannot be excluded [13]. FDG-PET-scan showed increased metabolic activity along several large intestinal loops but no additional extranodal or nodal manifestations were found on FDG-PET- or CT-scan. A lymphography was normal.

Increasing symptoms prompted steroid treatment. Neither 6 cycles of dexamethasone (40 mg i.v. during 4 out of 28 days) nor oral prednisone (7.5 mg daily for 6 months) or budesonide (9 mg per day for 1 year) resulted in lasting improvement. Due to progressive symptoms with increasing edema and reduced quality of life accompanied by persistent minor bone marrow infiltration therapy with rituximab (4 cycles of 375 mg/m² once weekly) was started. Even though this treatment temporarily improved diarrhea, patient deterioration and progressive weight loss of altogether 23 kg resulted in emergent inpatient admission (Figure 2).

The patient consumed a diet high in protein but low in long-chain fatty-acids but tolerated very little food. Feeding via a gastroduodenal tube resulted in worsening diarrhea and parenteral nutrition was started. A trial of octreotide (0.1 mg three times per day s.c. over 10 days) did not relieve symptoms. Progressive deterioration and hypotension prompted temporary treatment at an intensive-care unit.

A repeat bone marrow examination revealed minimal infiltration by the lymphoma, only detectable by flow cytometry. After exclusion of all alternative explanations for PLE, immunochemotherapy (rituximab 375 mg/m² every 4 weeks, bendamustine 90 mg/m² days 1 and 2 for a total of six months) was started. After one cycle, bone marrow examination showed complete response with improvement in performance, body weight, and edema.

20 months after completion of immunochemotherapy, lymphoma shows ongoing morphological, immunophenotypical, and molecular (*MYD88* PCR) remission. The patient

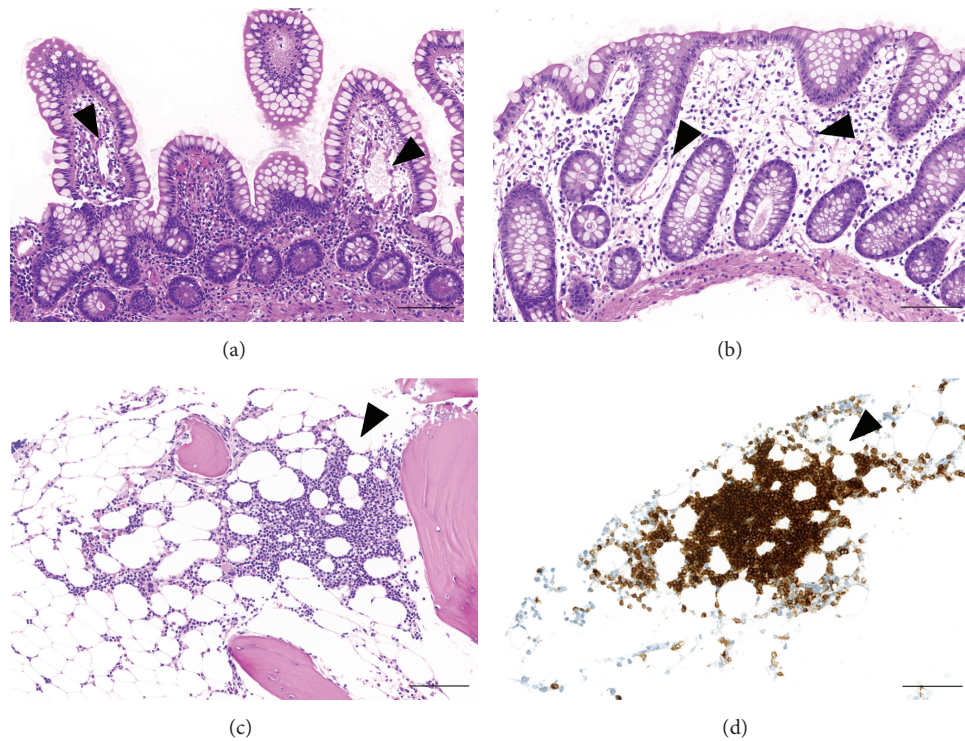


FIGURE 1: Small bowel (a) and large bowel (b) biopsy samples with minimal ectasia of lymphatic vessels (arrowheads) without other histopathologic findings (H&E). Bone marrow biopsy (c and d) with monotonous infiltrates of a low-grade non-Hodgkin lymphoma (c; H&E), highlighted by immunohistochemistry (d; B cell marker CD79a) (arrowheads). Scale bars = 100 μ m.

regained full performance status and body weight with normal serum albumin levels (Figure 2). The patient still notes occasional diarrhea which does not disturb daily activities. He provided written informed consent for publication of this case.

3. Discussion

We present the case of a patient with PLE secondary to marginal zone lymphoma. Protein losing enteropathy and intestinal malfunction resulted in pronounced clinical deterioration. Careful exclusion of virtually all alternative diagnosis and relief of PLE symptoms after treatment of lymphoma provide strong evidence of a causal relationship between marginal zone lymphoma and PLE in this patient.

Protein losing enteropathy was suspected due to the combination of low albumin and reduced serum levels of IgA, IgG, IgM, and transferrin combined with gastrointestinal symptoms. Proof of PLE was provided by determination of alpha-1 antitrypsin clearance which is excreted in the stool but not degraded [14, 15]. Normal values for alpha-1 antitrypsin clearance are 24 mL/day in patients without diarrhea and 56 mL/day in patients with diarrhea [16] and measurements in our patient were clearly above this level.

How B cell lymphoma caused PLE in our patient remains unclear but several potential mechanisms exist: (i) affection of intestinal lymph nodes resulting in lymphatic stasis, (ii) lymphatic hyperviscosity syndrome due to IgM paraprotein,

(iii) epithelial deposition of the paraprotein, (iv) direct infiltration of the mucosa by lymphoma cells, (v) aberrant activity of the paraprotein, and (vi) paraneoplastic effect mediated by cytokines or by immune response to lymphoma.

In our patient an extensive work-up excluded several of the mechanisms described above. Imaging of lymph nodes was normal and none of the biopsies revealed pronounced lymphangiectasia. Concentrations of the paraprotein were consistently extremely low and no hyperviscosity syndrome was present. Epithelial deposition and mucosal infiltration were excluded by endoscopy with multiple biopsies and immunohistochemistry was negative for IgM deposition. Congo red staining was negative for amyloidosis in the intestinal mucosa and in abdominal fat. There was little association between extent of bone marrow infiltration by the lymphoma and severity of the patient's symptoms.

PLE has been described as a rare complication of B cell neoplasms. The largest case series summarizes 25 current and historical cases with Waldenström's macroglobulinemia and variable concentrations of IgM paraprotein [17]. In most patients intestinal lymphangiectasia was apparent on intestinal biopsies and immunohistochemistry demonstrated IgM deposition in intestinal lymphatic vessels. The authors speculate that mucosal IgM production would lead to accumulation of the IgM paraprotein in the intestinal lymphatic system and subsequent stasis.

Case reports demonstrated PLE in the setting of a grade II follicular non-Hodgkin lymphoma with pronounced duodenal B cell follicles and retroperitoneal lymph nodes [18] as

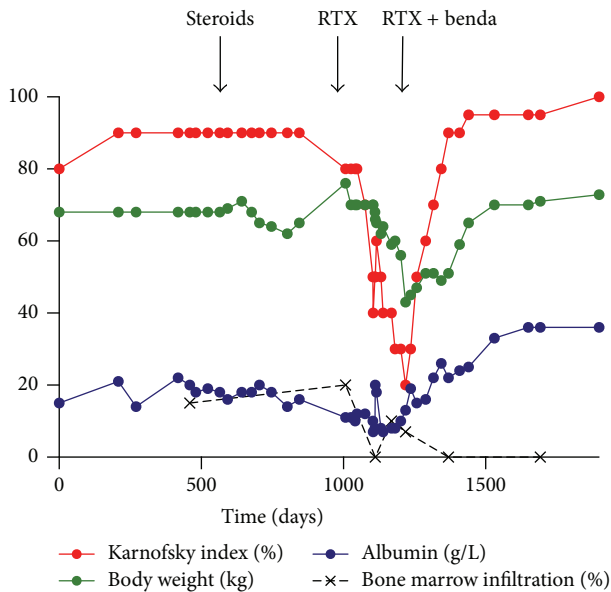


FIGURE 2: Evolution of representative disease markers. Courses of Karnofsky index, body weight, serum albumin, bone marrow infiltration, and timing of treatment are indicated. Please note different units of all markers (% for Karnofsky index and bone marrow infiltration, kg for body weight, and g/L for serum albumin). RTX: rituximab; benda: bendamustine.

well as a stage IVa non-Hodgkin lymphoma with retroperitoneal lymphadenopathy [19], respectively, with response to a treatment with rituximab CHOP. In another case of follicular lymphoma direct leakage of lymph from the duodenal bulb was observed [20].

Primary intestinal lymphangiectasia (PIL) is a rare condition [11] that can be complicated by the development of lymphoma [21, 22]. It remains unclear whether in these cases lymphangiectasia promotes lymphoma or an indolent lymphoma precedes lymphangiectasia. Reports of successful resolution of PIL-symptoms after lymphoma treatment [21] raise the possibility that some cases of PIL actually represent lymphoma associated PLE.

Treatment of PLE should focus on the underlying condition. Supportive treatment includes a low-fat, high-protein, medium triglyceride supplement diet [23] which has been ineffective in our patient. Octreotide has been used successfully in patients with primary intestinal lymphangiectasia [24], Ménétrier's disease [25], or amyloidosis [26] but did not affect symptoms in our patient. In our case even gastric or jejunal feeding and parenteral nutrition could not stop progressive deterioration. Finally, immunochemotherapy was started which resulted in a lasting remission of all symptoms.

Our case is remarkable for several reasons. (i) PLE was severe and almost lethal in our patient with an otherwise indolent lymphoma. (ii) Despite extensive investigations no macroscopic affection of the intestine was evident and intestinal lymphangiectasia was mild at best. Therefore, our case confirms that lymphoma can cause PLE without macroscopic lesions, without pronounced lymphangiectasia, and without

enlarged intestinal lymph nodes. To the best of our knowledge, in all cases with lymphoma and PLE at least one of these pathologies had been present. (iii) The bone marrow was the only site where lymphoma was detectable. The lymphoma mass was low, suggesting that PLE was caused by humoral factors secreted by lymphoma cells (e.g., interleukins) or an immune response. (iv) To the best of our knowledge no PLE secondary to marginal zone lymphoma has been described previously.

Our case report has several limitations. (i) No surgical specimen and no biopsies of intestinal lymph nodes are available and infiltration of deeper lymphatic vessels by B cells remain possible. (ii) Pathological assessment of intestinal lymphangiectasia has not been standardized and our pathological assessment might differ from assessments in other case reports or case series. (iii) Limited conclusions can be drawn from a single case.

In summary, we report the case of a patient with severe protein losing enteropathy due to marginal zone lymphoma which was successfully treated with immunochemotherapy. Hidden B cell lymphoma should be considered if no cause of PLE is apparent after work-up of a patient. Due to lack of detectable intestinal lesions during endoscopic investigations and with most imaging techniques a high level of suspicion for lymphoma is warranted in all cases of unexplained PLE after standard evaluations.

Competing Interests

There is no competing interests.

Authors' Contributions

Benjamin Misselwitz, Nadine Stanek, and Jeroen S. Goede are responsible for concept and drafting of manuscript; Benjamin Misselwitz, Nadine Stanek, and Daniela Lenggenhager are responsible for preparation of figures; all authors have contributed to critical review of manuscript for important content. All authors have seen and approved the final version of the manuscript.

References

- [1] M. J. A. M. Braamskamp, K. M. Dolman, and M. M. Tabbers, "Clinical practice. Protein-losing enteropathy in children," *European Journal of Pediatrics*, vol. 169, no. 10, pp. 1179–1185, 2010.
- [2] F. Furfaro, C. Bezzio, and G. Maconi, "Protein-losing enteropathy in inflammatory bowel diseases," *Minerva Gastroenterologica e Dietologica*, vol. 61, no. 4, pp. 261–265, 2015.
- [3] M. Ferrante, G. De Hertogh, F. Penninckx, and G. Van Assche, "Protein-losing enteropathy in Crohn's disease," *Clinical Gastroenterology and Hepatology*, vol. 3, no. 6, article A25, 2005.
- [4] E. C. Ebert and K. D. Hagspiel, "Gastrointestinal and hepatic manifestations of systemic lupus erythematosus," *Journal of Clinical Gastroenterology*, vol. 45, no. 5, pp. 436–441, 2011.
- [5] E. C. Ebert and M. Nagar, "Gastrointestinal manifestations of amyloidosis," *American Journal of Gastroenterology*, vol. 103, no. 3, pp. 776–787, 2008.

- [6] A. Rispo, M. Sica, L. Bucci et al., "Protein-losing enteropathy in sclerosing mesenteritis," *European Review for Medical and Pharmacological Sciences*, vol. 19, no. 3, pp. 477–480, 2015.
- [7] B. S. Ramakrishna, S. Venkataraman, and A. Mukhopadhyaya, "Tropical malabsorption," *Postgraduate Medical Journal*, vol. 82, no. 974, pp. 779–787, 2006.
- [8] J. Sakurai, J. Watari, T. Oshima, and H. Miwa, "Multiple gastric polypoid lesions with protein-losing enteropathy," *Internal Medicine*, vol. 50, no. 14, pp. 1497–1498, 2011.
- [9] W. El Hajj, G. Nakad, and A. Abou Rached, "Protein losing enteropathy secondary to strongyloidiasis: case report and review of the literature," *Case Reports in Gastrointestinal Medicine*, vol. 2016, Article ID 6831854, 6 pages, 2016.
- [10] C. Prussin, "Eosinophilic gastroenteritis and related eosinophilic disorders," *Gastroenterology Clinics of North America*, vol. 43, no. 2, pp. 317–327, 2014.
- [11] S. B. Ingle and C. R. Hinge, "Primary intestinal lymphangiectasia: minireview," *World Journal of Clinical Cases*, vol. 2, no. 10, pp. 528–533, 2014.
- [12] G. Atton, K. Gordon, G. Brice et al., "The lymphatic phenotype in Turner syndrome: an evaluation of nineteen patients and literature review," *European Journal of Human Genetics*, vol. 23, no. 12, pp. 1634–1639, 2015.
- [13] S. H. Swerdlow, I. Kuzu, A. Dogan et al., "The many faces of small B cell lymphomas with plasmacytic differentiation and the contribution of MYD88 testing," *Virchows Archiv*, vol. 468, no. 3, pp. 259–275, 2016.
- [14] J. J. Bernier, C. Florent, C. Desmazes, C. Aymes, and C. L'Hirondel, "Diagnosis of protein-losing enteropathy by gastrointestinal clearance of alpha-1-antitrypsin," *The Lancet*, vol. 2, no. 8093, pp. 763–764, 1978.
- [15] C. Florent, C. L'Hirondel, C. Desmazes, C. Aymes, and J. J. Bernier, "Intestinal clearance of α 1-antitrypsin. A sensitive method for the detection of protein-losing enteropathy," *Gastroenterology*, vol. 81, no. 4, pp. 777–780, 1981.
- [16] B. Strygler, M. J. Nicar, W. C. Santangelo, J. L. Porter, and J. S. Fordtran, "Alpha 1-antitrypsin excretion in stool in normal subjects and in patients with gastrointestinal disorders," *Gastroenterology*, vol. 99, no. 5, pp. 1380–1387, 1990.
- [17] K. W. Pratz, D. Dingli, T. C. Smyrk, and J. A. Lust, "Intestinal lymphangiectasia with protein-losing enteropathy in Waldenström macroglobulinemia," *Medicine*, vol. 86, no. 4, pp. 210–214, 2007.
- [18] M. Y. Yousuf, F. Imran, and A. Davis, "A rare association of B cell lymphoma and ectodermal dysplasia presenting with protein-losing enteropathy," *BMJ Case Reports*, 2009.
- [19] A. F. Cashen, D. C. Rubin, and N. L. Bartlett, "Protein losing enteropathy associated with follicular lymphoma of the small bowel," *American Journal of Clinical Oncology*, vol. 32, no. 2, pp. 222–223, 2009.
- [20] H. Kaneko, M. Yamashita, M. Ohshiro et al., "Protein-losing enteropathy in a case of nodal follicular lymphoma without a gastrointestinal mucosal lesion," *Internal Medicine*, vol. 47, no. 24, pp. 2171–2173, 2008.
- [21] D. Laharie, V. Degenne, H. Laharie et al., "Remission of protein-losing enteropathy after nodal lymphoma treatment in a patient with primary intestinal lymphangiectasia," *European Journal of Gastroenterology and Hepatology*, vol. 17, no. 12, pp. 1417–1419, 2005.
- [22] Y. Bouhnik, I. Etienney, J. Nemeth, T. Thevenot, A. Lavergne-Slove, and C. Matuchansky, "Very late onset small intestinal B cell lymphoma associated with primary intestinal lymphangiectasia and diffuse cutaneous warts," *Gut*, vol. 47, no. 2, pp. 296–300, 2000.
- [23] G. H. Jeffries, A. Chapman, and M. H. Sleisenger, "Low-fat diet in intestinal lymphangiectasia. Its effect on albumin metabolism," *The New England Journal of Medicine*, vol. 270, pp. 761–766, 1964.
- [24] A. B. Ballinger and M. J. G. Farthing, "Octreotide in the treatment of intestinal lymphangiectasia," *European Journal of Gastroenterology and Hepatology*, vol. 10, no. 8, pp. 699–702, 1998.
- [25] P. Yeaton and H. F. Frierson Jr., "Octreotide reduces enteral protein losses in Menetrier's disease," *American Journal of Gastroenterology*, vol. 88, no. 1, pp. 95–98, 1993.
- [26] J.-K. Shin, Y.-H. Jung, M.-N. Bae, I.-W. Baek, K.-J. Kim, and C.-S. Cho, "Successful treatment of protein-losing enteropathy due to AA amyloidosis with octreotide in a patient with rheumatoid arthritis," *Modern Rheumatology*, vol. 23, no. 2, pp. 406–411, 2013.




Hindawi

Submit your manuscripts at
<http://www.hindawi.com>

