



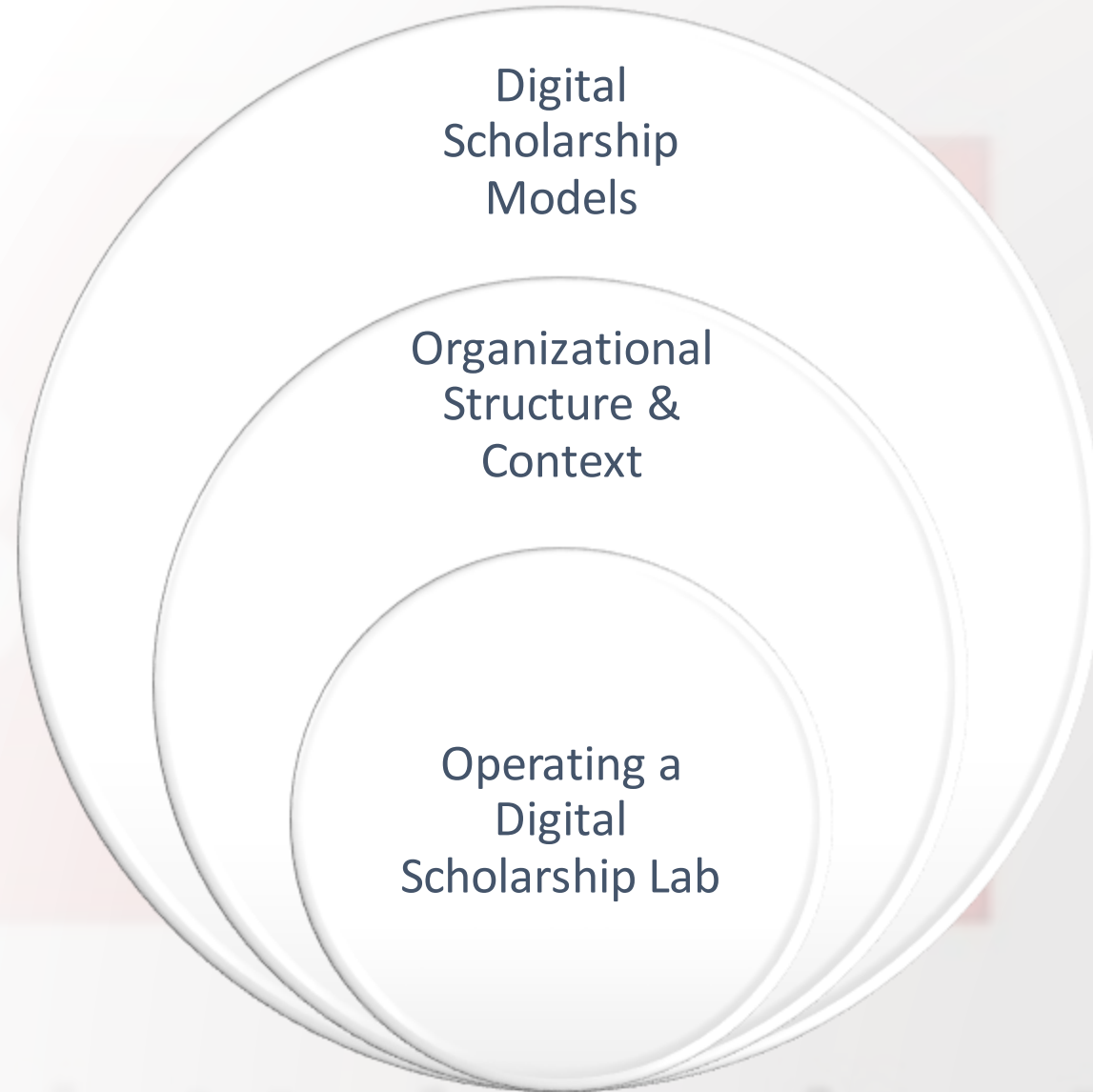
Brock University Library

Brock's New Digital Scholarship Lab: Partnering and Collaborating for Success

Mark Robertson
Nicole Nolan
Tim Ribaric

February 1, 2019

Presentation Overview



One attempt at defining digital scholarship...

"Digital Scholarship is a mode of work that is at its core collaborative, typically project-based, prone toward openness, dependent on technological infrastructure, and predisposed towards new or emerging research methods."

Moritz, C. et al. (2017) [De-centering and recentering digital scholarship: a manifesto](#). *Journal of New Librarianship*, 2(2).

But what's a digital scholarship lab/centre?

“Imagine an ideal environment at Brock that will support your research in a digital context (eg. using digital resources, tools, methods). What would this environment or facility be like? What would be happening there? What could you do there? What would draw you to come there?”

University

Brock University Library

Synthesis of focus group results

Tech infrastructure

- "Bedrock", "The Right Stuff"
- Computing, HPC, platforms, digital making

Expertise

- "Mike Holmes attitude"
- Consulting, partnering, connecting

Space

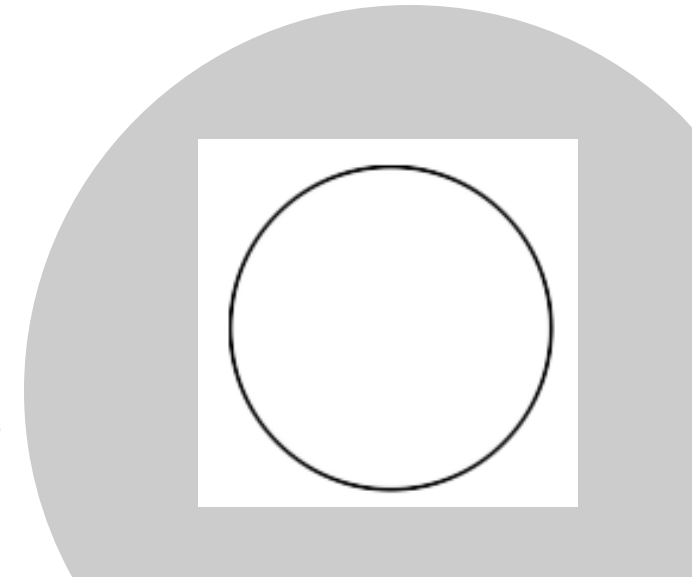
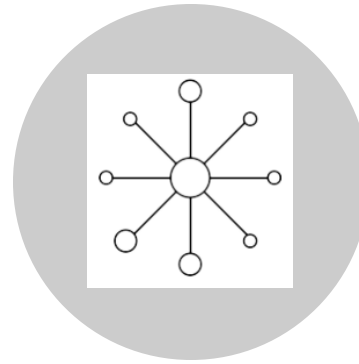
- "The Farm", "Kitchen Table", "Beehive"
- Modular, clusters, flexible, structured, collaborative

Programming

- "En-lightening"
- Sharing opportunities, workshops, conferences, demos, courses

Competing Paradigms

1. As Research Institute
 - Center for Digital Humanities (Brock)
2. As Centre
 - Center for Digital Scholarship (Brown)
3. As Distributed Practice
 - Hunt Library (NCSU)
4. As Collaboration
 - Sherman Centre (McMaster)



Images from: Anne, Kirk M., et al.
[Building Capacity for Digital Humanities](#) ECAR, 2017.

The Timeline

- Digital Scholarship Lab Proposal – Jan. 2015
- Development of Brock LINC Proposal - 2015/16
- Awarded SIF funding for Brock LINC – Nov. 2016
- Establishment of DSL Advisory Group – Fall 2016
- Brock LINC construction begins – April 2017
- Anticipated opening – March/April 2019



Organizational Structure & Context



||



DSL Branding



Brock University Library
Archives & Special Collections



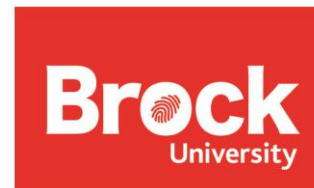
Brock University Library
Digital Scholarship Lab



Brock University Library



Brock University Library
Makerspace



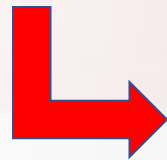
Brock University Library
Map, Data & GIS Library



Brock University Library
James A. Gibson Library

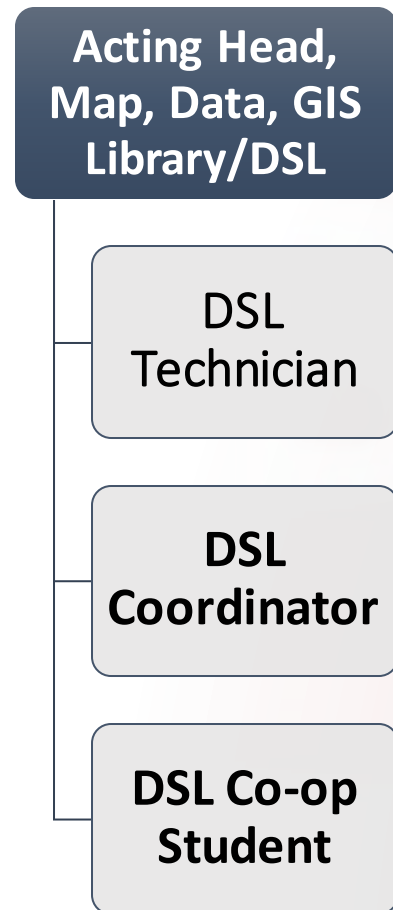
Brock University Library Departments

1. Collections
2. Archives and Special Collections
3. Library Systems
4. Liaison
5. Access Services
6. Map, Data, GIS Library



Digital Scholarship Lab

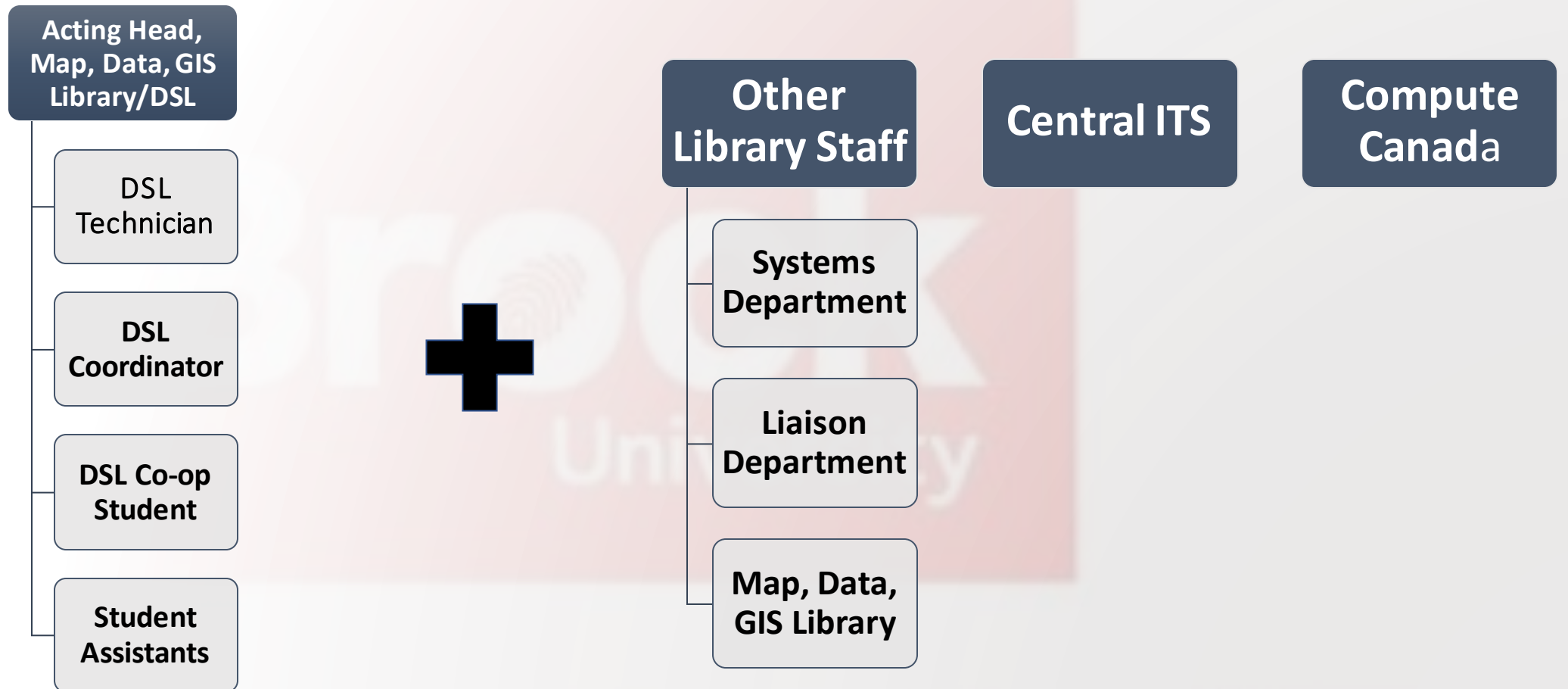
Who Reports to Who



rock
University

rock University Library

Service Point Staffing



Who are Other Library Staff?

Head, Library Systems

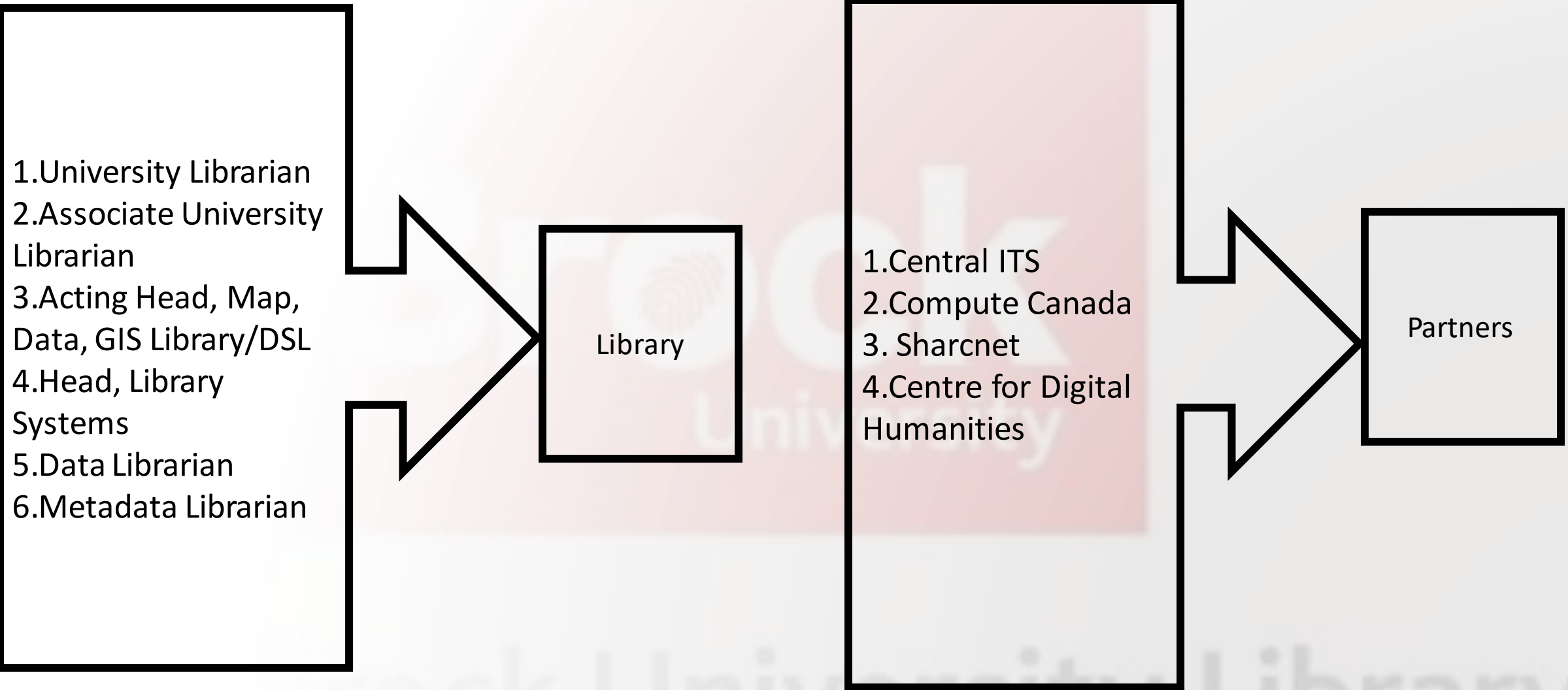
Data Librarian

Metadata Librarian

Geospatial/GIS Librarian

Geospatial Data Coordinator

DSL Advisory Committee:



Summary: Organizational Structure Collaboration!

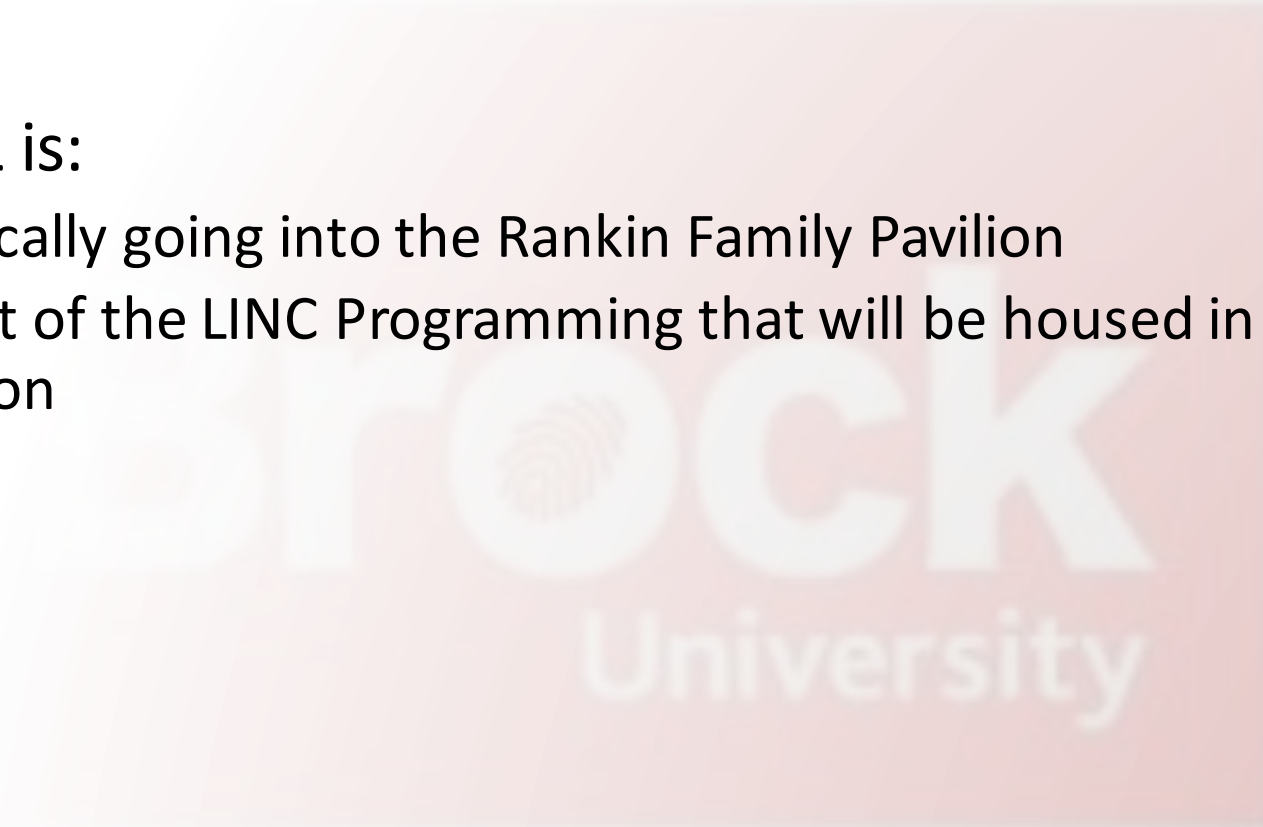
1. Acting Head Map, Data, GIS Library/DSL
2. DSL staff report through Acting Head
3. Staffing of the DSL space by:
 1. DSL Staff
 2. Library Staff
 3. Student Assistants
 4. Partners (Central ITS, Compute Canada)
4. Advisory Committee also has individuals from:
 1. Centre for Digital Humanities
 2. Sharcnet

Why so much Partnering & Collaboration?

1. Programming requires diverse expertise
2. Skills lie in many people on campus, both in and out of the library
3. To be a part of the overall Digital Scholarship conversation across campus
4. Programming:
 1. Data Use & Reuse
 2. Research Data Management
 3. Data Visualization
 4. GIS & Mapping
 5. High Performance Computing

More Collaboration: the Space

- The DSL is:
 - Physically going into the Rankin Family Pavilion
 - A part of the LINC Programming that will be housed in the Rankin Family Pavilion



Rock University Library

Rendering: Aerial View



Rendering: Front View



Rankin Family Building at Brock

1. LINC Programming:

1. Learning
2. Innovation
3. Networking
4. Collaboration

2. Multiple Brock Services points within this space – together make LINC Programming

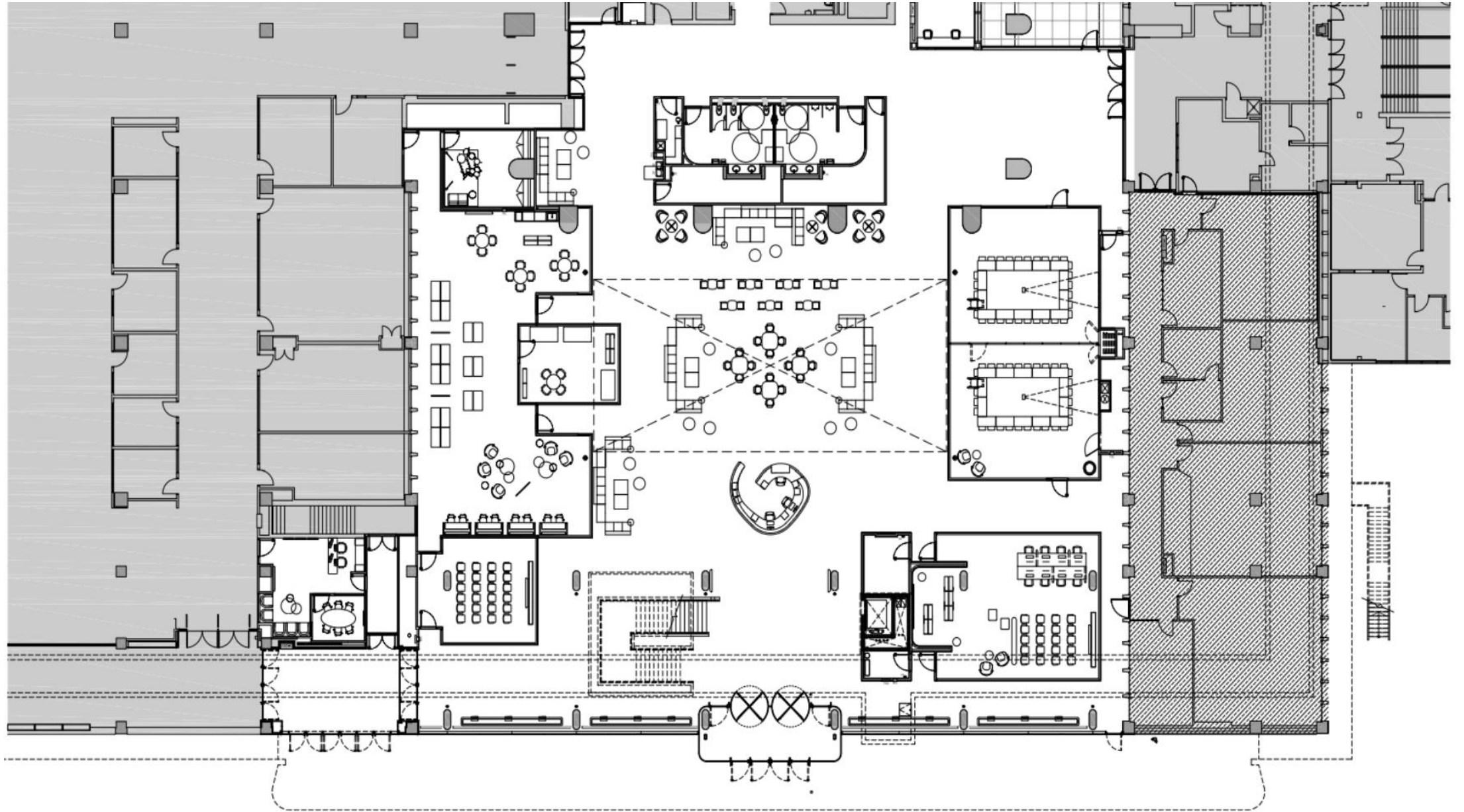
LINC Programming within the Rankin Family Building

1. Digital Scholarship Lab (Library)
2. Makerspace (Library)
3. Augmented Reality, Virtual Reality and Sensory Reality Consumer Laboratory, known as R3CL
4. Career Zone
5. Venture Development (Incubator)
6. Goodman MBA Consulting
7. CIMEE - Centre for Innovation, Management and Enterprise Education (Goodman)

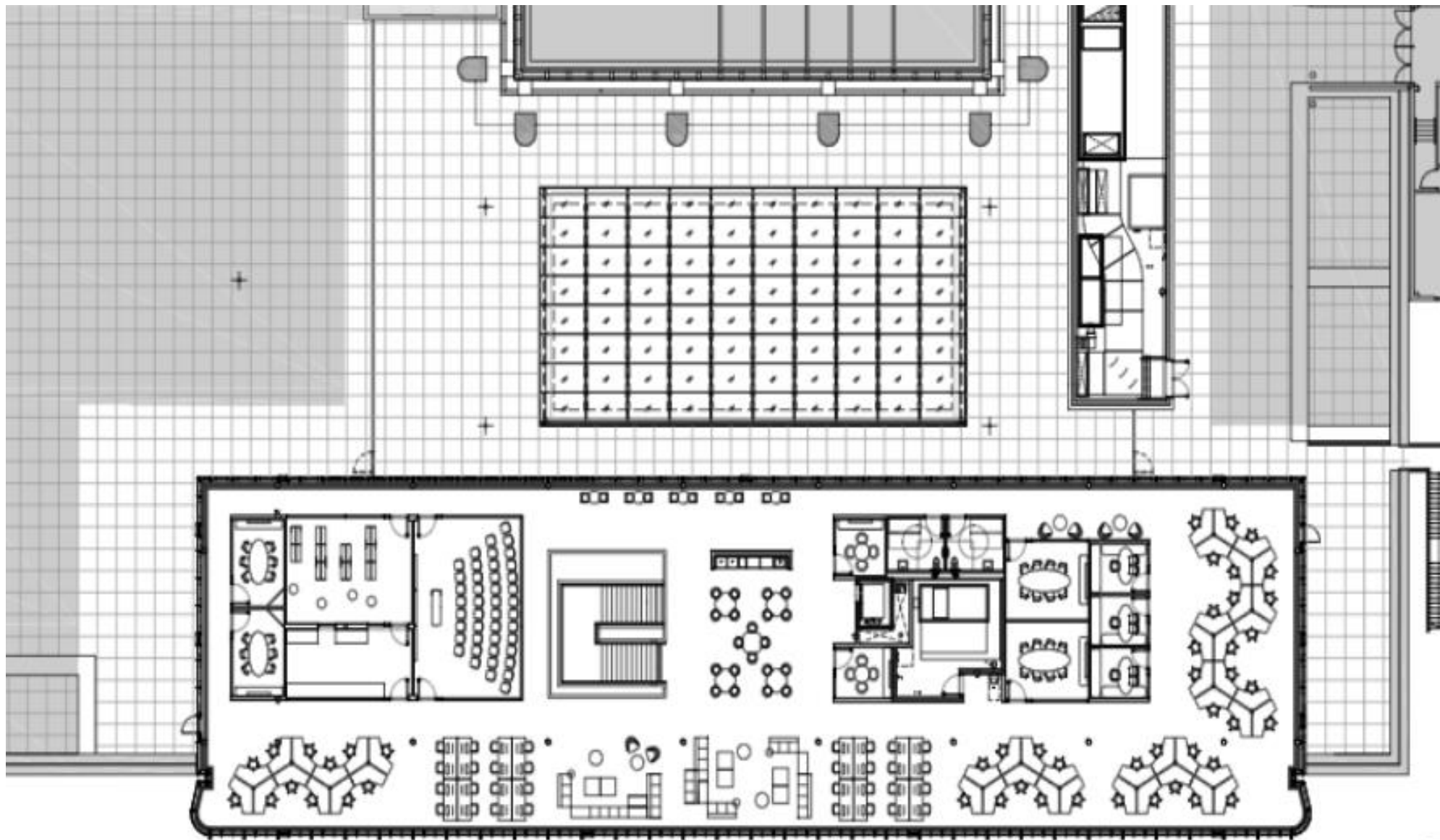
Collaborating on LINC Programming

1. LINC OG (LINC Operations Group) - reporting to the Vice-President, Research
2. Building a LINC Operational Plan
3. Considerations: LINC-related Certifications & Experiences
4. Discussions on: hours, room bookings, security, student experience, tracking, assessment

Rankin Family
Pavilion Main
Level



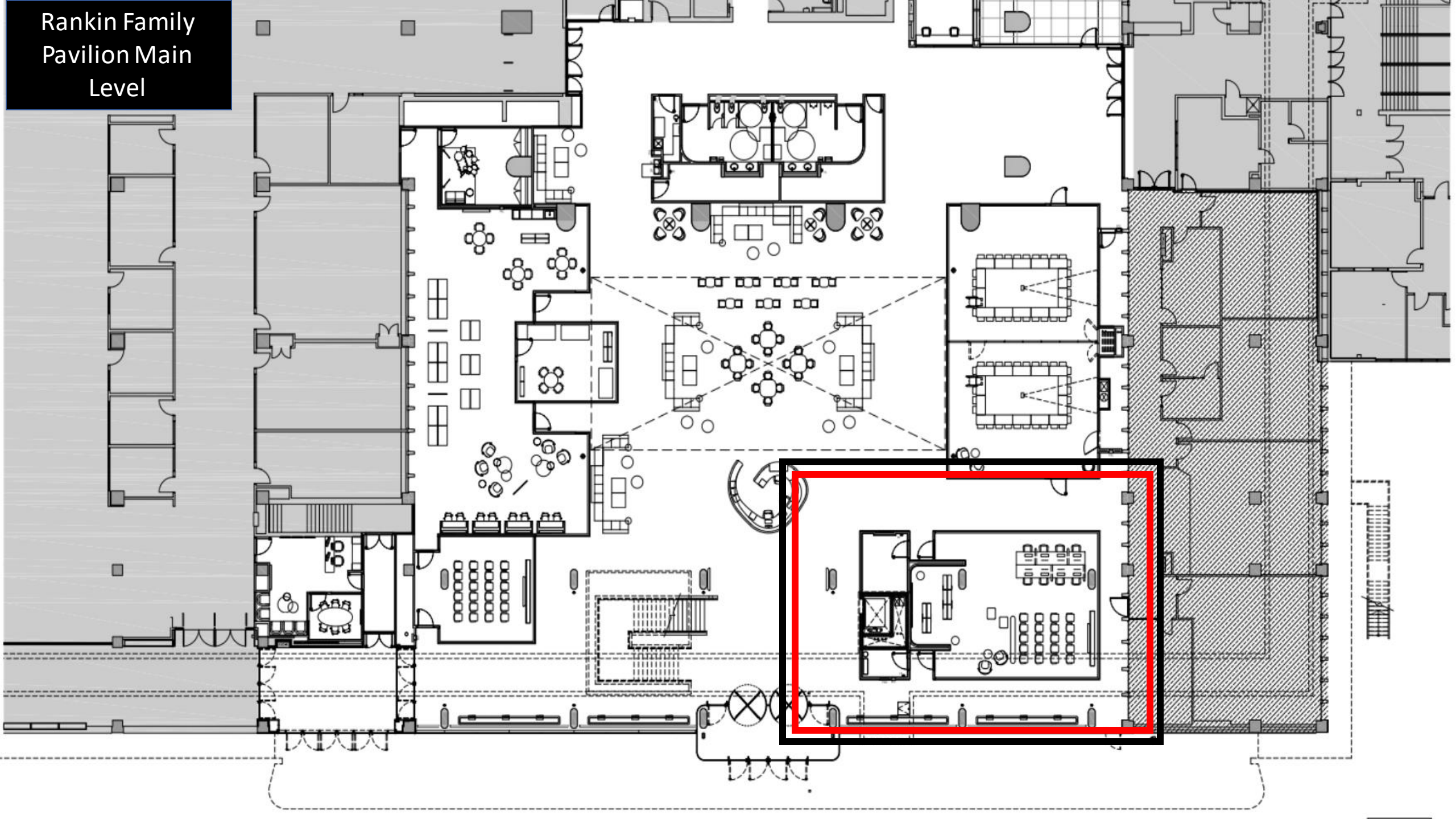
Rankin Family
Pavilion
Upper Level



Organizational Structure and Context: All about Collaborations and Partnering

1. DSL within the LINC on campus
2. Staffing the DSL
3. Supporting the DSL (Advisory Committee)
4. With the intention to be the campus hub for digital scholarship and research collaborations

Rankin Family Pavilion Main Level



Operating a Digital Scholarship Lab



How we do things

Tech infrastructure

- Jupyter
- Omeka
- GitHub

Expertise

- Drop in with local experts
- Consultations

Space

- 1100 SQ FT
- 8 Terminals
- Visualization wall

Programming

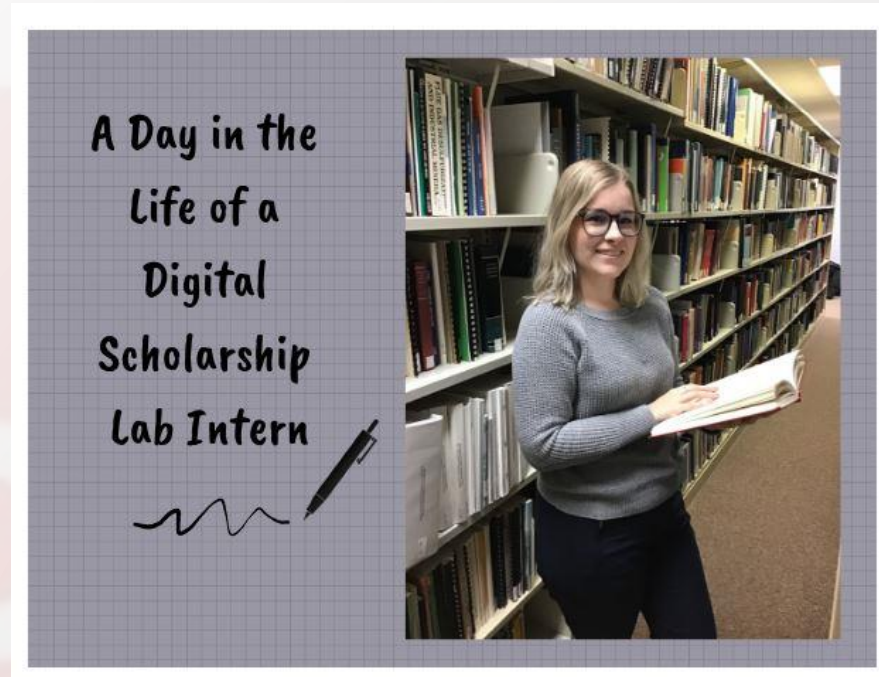
- Workshops
- Symposia
- Guest Speakers

What does this mean in the day to day?

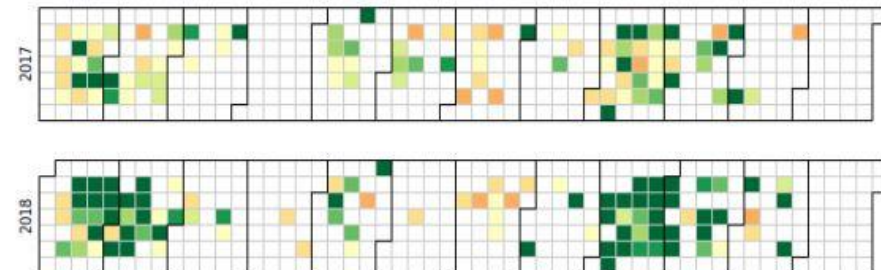
- We are in the business of cultivating ideas
- We can do interesting things in interesting ways
- Collaborations

Cultivating Ideas

- Workshops, workshops, workshops
- Use social media *a lot*



Students Attending Library Sessions



Interesting Things in Interesting Ways

- We are chronicling the opening of the space via a Podcast
- We are building large portions of our offerings with GitHub
- Flexibility of having everything as a Pilot project



Collaborations

- Door aren't even open yet...
- Reputation precedes us, projects have begun in earnest
- We treat it like improv: **Yes and** v. **No Thanks**



What's still to come

- Docker
 - Virtualized services specific to project work
 - On demand project support
- Jupyter
 - Computational Notebooks to teach everything under the sun
 - The vehicle of reproducible science
- Mini Cluster
 - Via Microsoft's HPC-Pack
 - Batch processing or true parallel computing

Thank you! Questions?

Stock University Library