

## ORIGINAL RESEARCH

# Internal comparison between deuterium oxide (D<sub>2</sub>O) and L-[ring-<sup>13</sup>C<sub>6</sub>] phenylalanine for acute measurement of muscle protein synthesis in humans

Daniel J. Wilkinson\*, Jessica Cegielski\*, Bethan E. Phillips, Catherine Boereboom, Jonathan N. Lund, Philip J. Atherton<sup>§</sup> & Kenneth Smith<sup>§</sup>

MRC-ARUK Centre of Excellence for Musculoskeletal Ageing Research, School of Medicine, University of Nottingham, Derby, UK

## Keywords

Deuterium oxide, metabolism, muscle protein synthesis, stable isotope tracers.

## Correspondence

Daniel J. Wilkinson, MRC-ARUK Centre of Excellence for Musculoskeletal Ageing Research, Clinical, Metabolic and Molecular Physiology, School of Medicine, University of Nottingham, Royal Derby Hospital Centre, Derby, DE22 3DT, UK.  
Tel: +44 1332 724850  
Fax: +44 1332 724727  
E-mail: [d.wilkinson@nottingham.ac.uk](mailto:d.wilkinson@nottingham.ac.uk)

## Funding Information

This study was funded by a Dunhill Medical Trust Research Grant (R264/1112) and a MRC Confidence in Concept award (CIC12019). D. J. Wilkinson is a MRC-ARUK centre funded postdoctoral research fellow. Equipment was funded by monies provided by MRC-ARUK centre funding to the Universities of Nottingham and Birmingham.

Received: 15 May 2015; Accepted: 25 May 2015

doi: 10.14814/phy2.12433

*Physiol Rep*, 3 (7), 2015, e12433, doi: 10.14814/phy2.12433

\*These authors contributed equally.

<sup>§</sup>Equal senior author.

## Introduction

Stable isotope tracers have been at the forefront of metabolic research since the successful isolation of the stable isotope deuterium by Harold Urey in 1931 (Urey et al. 1932). This combined with the rapid and dedicated development of these new techniques over subsequent

## Abstract

Stable isotope tracer methodologies are becoming increasingly widespread in metabolic research; yet a number of factors restrict their implementation, such as, i.v infusions, multiple cannulae, tissue samples, and significant cost. We recently validated the sensitivity of the orally administered stable isotope tracer deuterium oxide (D<sub>2</sub>O) for quantifying day-to-day changes in muscle protein synthesis (MPS). This method is less invasive, restrictive, and more cost-effective than traditional amino acid (AA) tracer techniques. In the present study, we hypothesized the sensitivity of our analytical techniques (GC-Pyrolysis-IRMS) would permit D<sub>2</sub>O-derived measurements of MPS over much shorter periods (i.e., hours) usually only possible using AA-tracer techniques. We recruited nine males (24 ± 3 year, BMI: 25 ± 3 kg·m<sup>-2</sup>) into an internally controlled comparison of D<sub>2</sub>O versus <sup>13</sup>C AA-tracers. The day before the acute study subjects consumed 400 mL D<sub>2</sub>O, and on the study day, received a primed (0.3 mg·kg<sup>-1</sup>) continuous (0.6 mg·kg·h<sup>-1</sup>) i.v infusion of L-[ring-<sup>13</sup>C<sub>6</sub>]-phenylalanine to quantify MPS under both: (1) basal [postabsorptive] and; (2) stimulated [postprandial] that is, consumption of 20 g EAA, conditions. Measures of MPS yielded indistinguishable technique differences with respect to EAA, <sup>13</sup>C: 0.065 ± 0.004 to 0.089 ± 0.006%·h<sup>-1</sup> (*P* < 0.05) and D<sub>2</sub>O: 0.050 ± 0.007 to 0.088 ± 0.008%·h<sup>-1</sup> (*P* < 0.05) with qualitatively similar increases. Our findings reveal that acute measurement of MPS, usually only possible using AA-tracers, are feasible over shorter periods with orally administered D<sub>2</sub>O when used in tandem with GC-Pyrolysis-IRMS. We conclude that this D<sub>2</sub>O approach provides a less invasive, cost-effective, and flexible means by which to quantify MPS acutely over several hours.

years by Urey, Schoenheimer, and Rittenberg, has provided us with an exquisite array of tools for understanding metabolic systems and substrate turnover (Schoenheimer and Rittenberg 1935, 1938; Rittenberg and Schoenheimer 1937; Rennie et al. 1982; Zhang et al. 1996, 2012; Wolfe and Chinkes 2005). Such isotopic methodologies have been key to our understanding of the regula-

tion of skeletal muscle mass in particular (Atherton and Smith 2012). With the diversity of muscle functions ranging from; the control of locomotion and physical function to acting as a fuel reservoir for other organs in times of stress/illness, maintenance of muscle mass is essential for ensuring metabolic health, in addition to maintaining independence and quality-of-life into older age.

Over recent decades, the study of human muscle protein turnover has been aided through the use of stable isotopically labeled amino acids (AA) with either heavy carbon (<sup>13</sup>C), hydrogen (<sup>2</sup>H) or nitrogen (<sup>15</sup>N) motifs. The incorporation of these labeled AA into muscle protein permits the calculation of a fractional synthetic rate (FSR) of muscle protein synthesis (MPS). Whilst monitoring of the rate of disappearance of the tracer from the arterial pool, and appearance of the tracer in the venous pool across a specified tissue provides rates of synthesis and breakdown respectively. However, these approaches have limitations. Application of these tracers often requires complex experimental set-up involving i.v. infusions, which necessitate venous (and arterial) cannulation, alongside multiple biopsies and are generally restricted to periods of up to 12 h. Such limitations make it difficult to apply these techniques to certain populations (frail elderly, critical care, CKD, young children and adolescents) and also restrict the acquisition of longer term, potentially more habitually relevant metabolic readouts.

We have recently demonstrated that by providing a single oral bolus of the tracer deuterium oxide (D<sub>2</sub>O), we were able to accurately measure MPS over a period of as little as 2 days both at rest and in response to exercise (Wilkinson *et al.* 2014). This method is far less invasive, requiring only a single tissue [muscle] biopsy, and has been used to measure MPS over periods between 1 or 2 days (Gasier *et al.* 2012; Wilkinson *et al.* 2014) to several weeks (Robinson *et al.* 2011). Due to the sensitivity of the methods we pioneered, that is, GC-pyrolysis-IRMS, we predicted we would be able to detect MPS differences over even shorter periods of several hours (~3–6 h), a time period generally only conducive to the use of traditional AA-tracers. If true, this would provide an alternative for the measurement of MPS without the need for invasive routes of tracer administration or multiple-blood and tissue sampling in a more cost-effective and less invasive manner. As such, the aim of this study was to internally compare our D<sub>2</sub>O tracer technique against traditional AA-tracer techniques using L-[ring-<sup>13</sup>C<sub>6</sub>] phenylalanine; we quantified MPS using both tracers under basal (postabsorptive) and stimulated (postprandial) conditions. A comparison between phenylalanine tracers and D<sub>2</sub>O for the measurement of acute MPS has been performed previously (Gasier *et al.* 2009), however, rats turnover approximately 10-fold faster than humans, addi-

tionally there were distinct differences between measurement periods employed (4 h and 24 h for D<sub>2</sub>O and 12 mins for Phenylalanine) and mode of tracer administration (phenylalanine was administered as a flooding dose rather than primed constant infusion). In the present study, we performed an internal comparison in humans between L-[ring-<sup>13</sup>C<sub>6</sub>] phenylalanine and D<sub>2</sub>O within the same individuals using the same design and measurement periods, in order to determine whether D<sub>2</sub>O could provide a robust alternative, and simpler, less burdensome approach for use in laboratories and populations where repeat invasive sampling and i.v. tracer administration may not be possible.

## Materials and Methods

### Subject characteristics and ethics

Nine healthy young males (24 ± 3 year, BMI: 25 ± 3 kg·m<sup>-2</sup>) were recruited. All subjects were screened by means of a medical questionnaire, physical examination, and resting ECG, with exclusions for metabolic, respiratory, and cardiovascular disorders or other symptoms of ill-health. Subjects had normal blood chemistry, were normotensive (BP < 140/90) and were not prescribed any medications; all subjects performed activities of daily living and recreation. All subjects gave their written, informed consent to participate after all procedures and risks were explained. This study was approved by The University of Nottingham Ethics Committee and complied with the Declaration of Helsinki.

### Study procedures

Subjects were asked to refrain from heavy exercise for 72 h before the start of the study. About 24 h prior to the start of the study, following provision of a basal saliva sample, each subject was provided with 400 mL D<sub>2</sub>O (70 Atom%, Sigma Aldrich, Poole, UK), which was consumed in four doses of 100 mL at 2 h intervals from 2 pm that afternoon (to avoid potential side effects associated with consumption of large doses of D<sub>2</sub>O, e.g., dizziness, nausea). The subjects were advised to consume their normal diet that evening and following an overnight fast (>10 h), subjects arrived to the laboratory at ~0830 h the following day and had an 18 g cannula inserted into the antecubital vein of one arm for tracer infusion and a retrograde 14 g cannula inserted to sample arterialized blood from the dorsal capillary bed of the opposite hand (using the 'hot hand' method; (Greenhaff *et al.* 2008)). A primed, continuous infusion (0.3 mg·kg<sup>-1</sup> prime, 0.6 mg·kg·h<sup>-1</sup> continuous infusion) of L-[ring-<sup>13</sup>C<sub>6</sub>]-phenylalanine (99 Atoms %, Cambridge Isotopes Limited, Cambridge, MA) was

**Table 1.** Composition of essential amino acid drink.

Essential amino acid	Mass added (g)	Percentage mass added (%)
Histidine	1.61	8.09
Isoleucine	2.31	11.60
Leucine	4.79	24.06
Lysine	4.09	20.54
Methionine	1.27	6.38
Phenylalanine	1.21	6.08
Threonine	1.51	7.58
Tryptophan	0.64	3.21
Valine	2.48	12.46

started (at  $t = -1$  h) and maintained until the end of the study (6 h). 1 h after the beginning of the infusion the first biopsy was collected (0 h) with a second biopsy collected 3 h later (3 h). This allowed us to gather “basal”, postabsorptive measurements (0–3 h), before subjects consumed 20 g of essential amino acids (EAA; see Table 1 for composition, with 6% of the phenylalanine provided as L-[ring-<sup>13</sup>C<sub>6</sub>]-phenylalanine to prevent dilution of the tracer) dissolved in 250 mL of water for measures of postprandial MPS from 3–6 h, with the third and final biopsy collected at 6 h. Muscle biopsies (~200 mg) were taken from *m. vastus lateralis* under sterile conditions using local anesthetic (1% lidocaine). A schematic of the protocol is shown in Fig. 1. In addition to blood and muscle, subjects provided saliva throughout (inclusive of a sample prior to oral administration of D<sub>2</sub>O) for the measurement of body water enrichment.

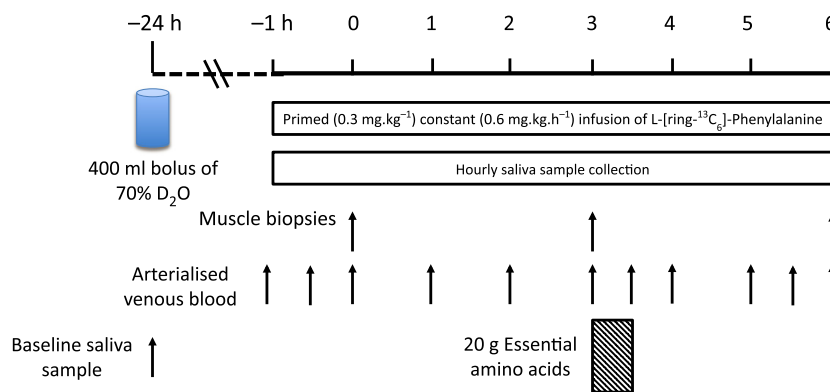
### Body water enrichment

Water was obtained from saliva samples prior to analysis. 100  $\mu$ L aliquots of saliva were placed in the cap of inverted auto-sampler vials; these were then placed on a heating block at 90°C for 4 h. Water distillate was col-

lected by rapidly cooling the vials on ice for 10 min, and was transferred to fresh vials for direct liquid injection into a high temperature conversion elemental analyzer (TC/EA; Thermo Scientific, Hemel Hempstead, UK) connected to an Isotope Ratio Mass Spectrometer (IRMS, Delta V Advantage; Thermo Scientific) as previously described Wilkinson *et al.* (2014).

### Isolation and derivatization of myofibrillar protein fractions

For isolation of myofibrillar fractions ~30–50 mg of muscle was used. The muscle was homogenized in ice-cold homogenization buffer (50 m·molL<sup>-1</sup> Tris-HCl (pH 7.4), 50 m·molL<sup>-1</sup> NaF, 10 m·molL<sup>-1</sup>  $\beta$ -Glycerophosphate disodium salt, 1 m·molL<sup>-1</sup> EDTA, 1 m·molL<sup>-1</sup> EGTA, 1 m·molL<sup>-1</sup> activated Na<sub>3</sub>VO<sub>4</sub> (all Sigma-Aldrich)) and a complete protease inhibitor cocktail tablet (Roche, West Sussex, UK) at 10  $\mu$ L· $\mu$ g<sup>-1</sup> of tissue. Homogenates were rotated for 10 min and the supernatant collected by centrifugation at 10,000  $\times$  *g* for 5 min at 4°C. The myofibrillar pellets were solubilized in 0.3 molL<sup>-1</sup> NaOH, separated from insoluble collagen by centrifugation and the myofibrillar protein precipitated with 1 molL<sup>-1</sup> perchloric acid (PCA). Protein-bound AA were released using acid hydrolysis by incubating in 0.1 molL<sup>-1</sup> HCl in Dowex H<sup>+</sup> resin slurry overnight at 110°C before being eluted from the resin with 2 molL<sup>-1</sup> NH<sub>4</sub>OH and evaporated to dryness. The AA were then derivatized as their *n*-methoxycarbonyl methyl esters (MCME) according to the protocol of Husek (Husek and Liebich 1994) with slight modifications. The dried samples were resuspended in 60  $\mu$ L of distilled water and 32  $\mu$ L of methanol, following a brief vortex, 10  $\mu$ L of pyridine and 8  $\mu$ L of methylchloroformate were added. Samples were vortexed for 30 sec and left to react at room temperature for 5 min. Newly formed MCME AA were then extracted into 100  $\mu$ L of chloro-

**Figure 1.** Schematic of D<sub>2</sub>O L-[ring-<sup>13</sup>C<sub>6</sub>]-Phenylalanine dual tracer comparison study protocol.

form; any remaining water was removed from the sample with addition of a molecular sieve. Incorporation of deuterium into protein-bound alanine was determined by gas chromatography-pyrolysis-isotope ratio mass spectrometry, and the incorporation of L-[ring-<sup>13</sup>C<sub>6</sub>] phenylalanine into myofibrillar protein by gas chromatography-combustion-isotope ratio mass spectrometry. Both analyses were performed using the same system (Delta V Advantage; Thermo Scientific) utilizing a GC isolink and four port switching-valve to permit switching between pyrolysis and combustion ovens.

### Plasma/intracellular phenylalanine labeling and plasma BCAA concentrations

For plasma AA concentration and enrichment measurements, proteins were precipitated with 100% ethanol following addition of 10 μL of norleucine internal standard (250 μg·mL<sup>-1</sup>) and the supernatant evaporated to dryness, reconstituted in 0.5 molL<sup>-1</sup> HCl and the lipid fraction removed using ethyl acetate extraction. The remaining aqueous phase was then evaporated to dryness. For intracellular enrichment, 200 μL of the sarcoplasmic fraction was deproteinized with 1 molL<sup>-1</sup> PCA, the supernatant was neutralized and purified on Dowex H<sup>+</sup> resin before being evaporated to dryness. Plasma and intracellular phenylalanine, and plasma leucine, isoleucine and valine were then converted to their tBDMS derivative and enrichment (APE) determined using gas chromatography-mass spectrometry (Trace 1300 - ISQ, GC-MS and Trace 1310 - TSQ, GC-MS/MS; Thermo Scientific) in single ion monitoring mode. Plasma BCAA concentrations were determined with reference to a standard curve.

### Calculation of fractional synthetic rate (FSR)

The FSR of myofibrillar proteins (MPS) using the D<sub>2</sub>O tracer was determined, using the precursor-product approach, from the incorporation of deuterium labeled alanine into protein, using the enrichment of body water (corrected for the mean number of deuterium moieties incorporated per alanine, 3.7, and the total number of hydrogen within the alanine derivative, 11) as the surrogate precursor labeling between subsequent biopsies. In brief, the standard equation is:

$$\text{FSR} (\% \cdot \text{h}^{-1}) = \frac{[(\delta_{\text{Ala}})]}{[(\delta_{\text{p}}) \times t]} \times 100$$

where,  $\delta_{\text{Ala}}$  = deuterium enrichment (in delta excess) of protein-bound alanine between subsequent biopsies,  $\delta_{\text{p}}$  = precursor enrichment (in delta excess) and  $t$ , time between biopsies.

Fractional synthetic rate (FSR) of myofibrillar proteins using the L-[ring-<sup>13</sup>C<sub>6</sub>]-phenylalanine tracer was calculated using the same standard precursor-product equation as above:

$$\text{FSR} (\% \cdot \text{h}^{-1}) = \frac{[(E_{\text{m}})]}{[(E_{\text{p}}) \times t]} \times 100$$

where  $E_{\text{m}}$  = the change in the protein bound L-[ring-<sup>13</sup>C<sub>6</sub>]-phenylalanine enrichment in atoms per excess (APE) between subsequent biopsies and  $E_{\text{p}}$  = the mean enrichment over the same time period ( $t$ ) of the precursor for protein synthesis (calculated from the mean of the two intracellular L-[ring-<sup>13</sup>C<sub>6</sub>]-phenylalanine enrichment (APE) over the defined measurement period).

### Statistical analyses

Descriptive statistics were produced for all data sets to check for normal distribution (accepted if  $P > 0.05$ ) using a Kolmogorov–Smirnov test. Differences within groups and between groups (feed × tracer) were detected by two-way ANOVA with a Sidak-Holm post hoc test using GraphPad Prism software (Version 5, La Jolla, San Diego CA). Limits of agreement between methods were performed using Bland–Altman plots, with correlations analyzed using Pearson's Product Moment coefficient. The alpha level of significance was set at  $P < 0.05$ . All data are presented as mean ± SEM.

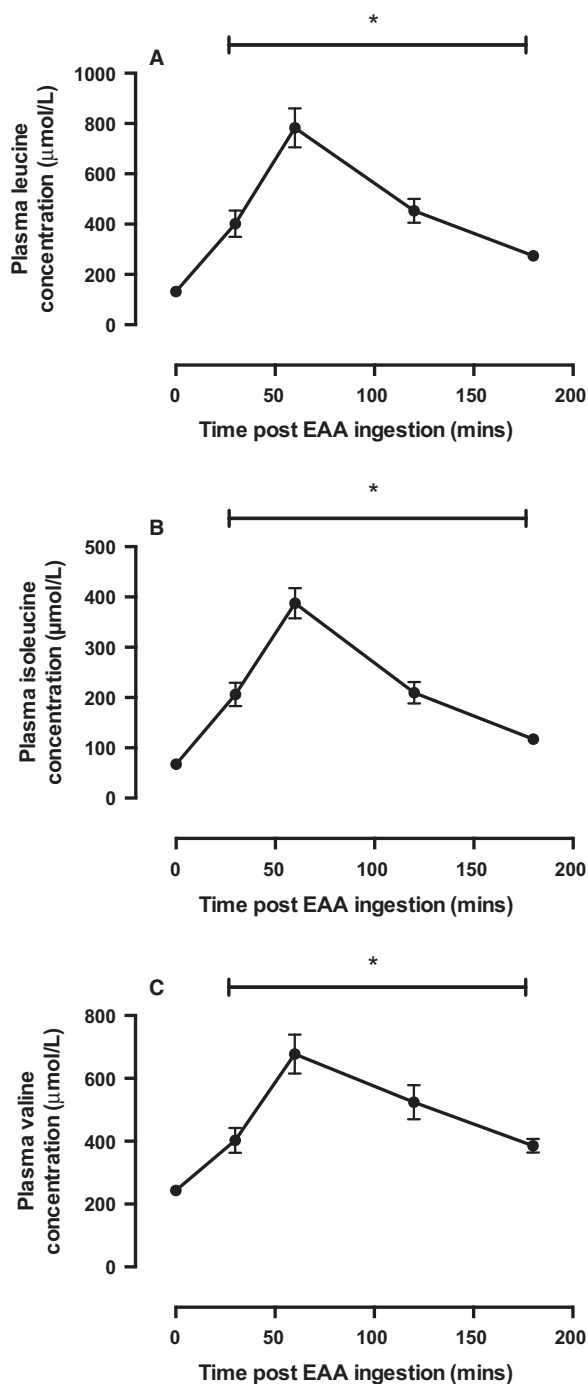
## Results

### Plasma AA concentrations

As would be expected, we observed significant increases in plasma AA concentrations following EAA consumption as represented by the concentrations of leucine, valine, and isoleucine ( $P < 0.01$ ; Fig. 2). Concentrations of AA peaked ~60 min following feeding and were significantly different from fasted at all postprandial time points during the study period.

### Body water, plasma, and intracellular phenylalanine enrichment

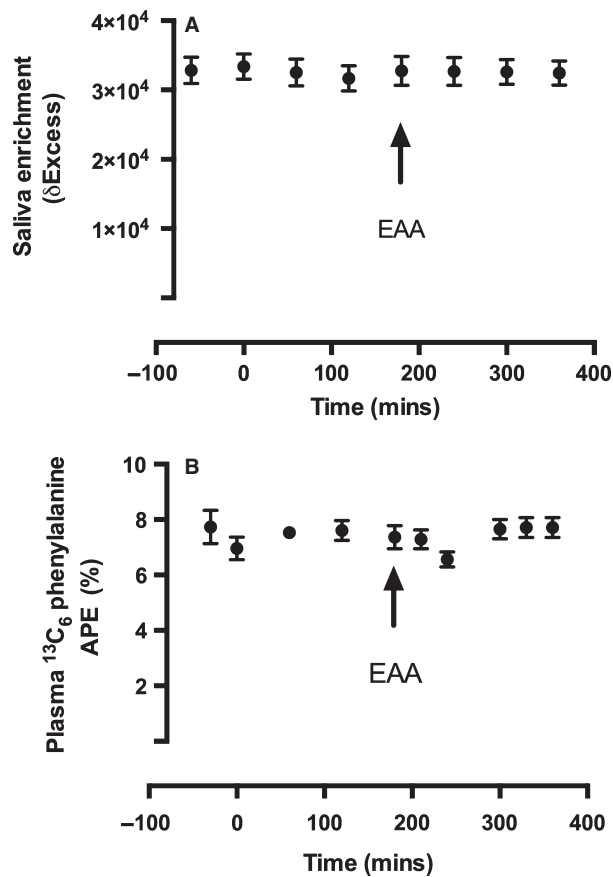
Body water enrichments were ~33,000 δ and due to the slow turnover rate of body water this level of enrichment maintained a pseudo-steady state throughout the acute study period (see Fig. 3). Plasma L-[ring-<sup>13</sup>C<sub>6</sub>] phenylalanine enrichment also maintained a steady state throughout the study period. Mean intracellular L-[ring-<sup>13</sup>C<sub>6</sub>] phenylalanine enrichment for the postabsorptive and postprandial periods were  $4.1 \pm 0.5$  and  $4.75 \pm 0.2$  APE respectively.



**Figure 2.** Plasma (A) Leucine (B) Isoleucine, and (C) Valine concentrations. \*Significantly different from fasted  $P < 0.05$ .

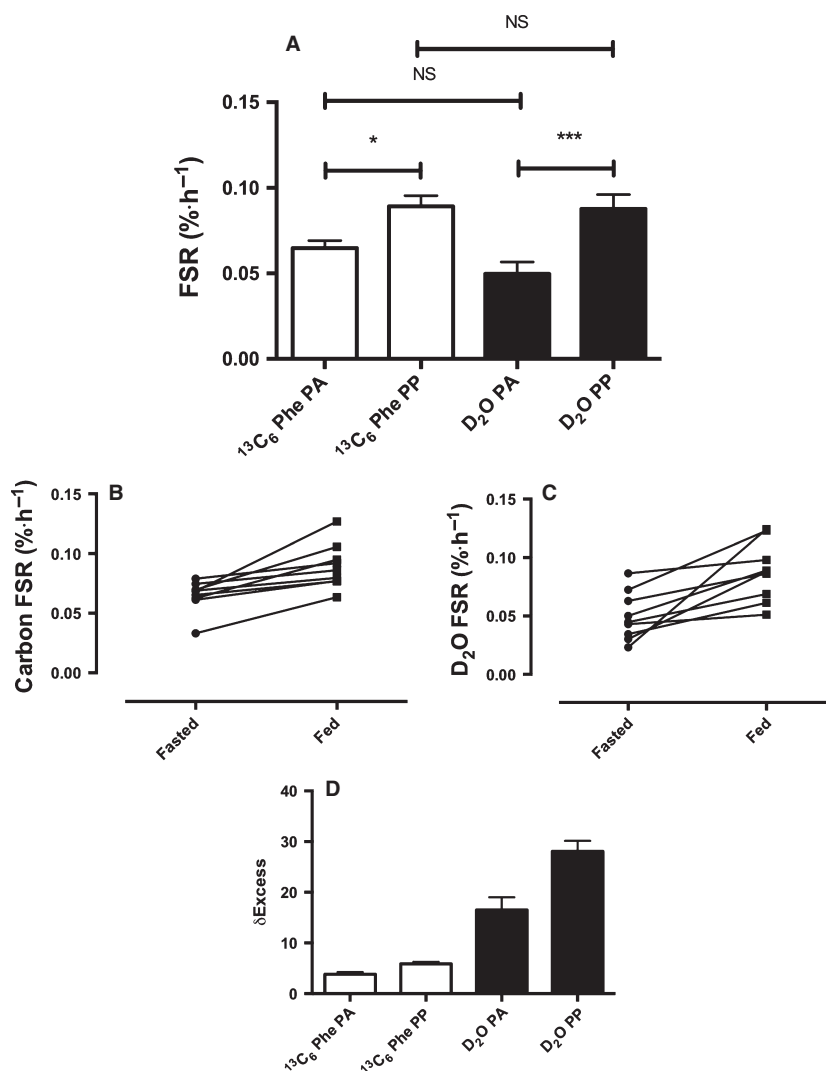
### Myofibrillar protein synthesis: comparison of D<sub>2</sub>O and L-[ring-<sup>13</sup>C<sub>6</sub>]-phenylalanine tracers

Postabsorptive rates of MPS were  $0.050 \pm 0.007$  and  $0.065 \pm 0.004\% \cdot h^{-1}$ , respectively, using the D<sub>2</sub>O and



**Figure 3.** (A) Saliva body water enrichment in delta excess notation and (B) plasma phenylalanine enrichment in APE.

L-[ring-<sup>13</sup>C<sub>6</sub>]-phenylalanine tracers (Fig. 4A). Following consumption of the EAA solution, rates of MPS increased to  $0.088 \pm 0.008$  and  $0.089 \pm 0.006\% \cdot h^{-1}$  respectively, this was significantly higher than postabsorptive rates for each tracer (Fig. 4A). Despite the qualitatively similar means-based data, if each subject is investigated individually and the two tracer techniques are directly compared quantitatively, the rates produced from the two techniques did not always yield the same differences (Fig. 4B and C). A Bland–Altman plot of the agreement between the two methods can be observed in Fig. 5A, with the calculated bias between the two methods 0.0083, suggesting that overall the two methods agree reasonably well, however, it can be observed from the plot that a small number of data points do not agree so well with one falling outside the 95% confidence intervals. Despite this, there was a significant correlation between FSR for the two methods; Pearson  $r = 0.438$ , one tailed  $P = 0.035$ , two tailed  $P = 0.069$  (Fig. 5B), as well as the delta FSR change from postabsorptive to postprandial (Fig. 5C).



**Figure 4.** (A) Comparison of mean postabsorptive (PA) and postprandial (PP) myofibrillar FSR as measured using D<sub>2</sub>O (black bars) and L-[ring-<sup>13</sup>C<sub>6</sub>]-phenylalanine (clear bars). \**P* < 0.05; \*\*\**P* < 0.001. (B) Individual carbon FSR values, and (C) Individual D<sub>2</sub>O FSR values. (D) Absolute  $\delta$  excess values for carbon and deuterium tracers.

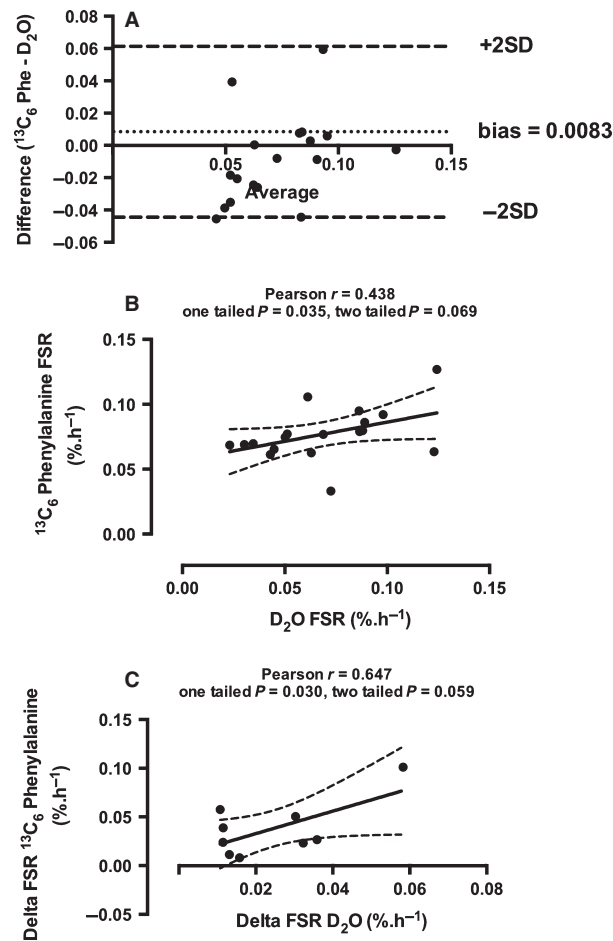
## Discussion

The requirement for complex clinical experimental set-up, alongside the need for invasive cannulation and biopsy techniques limits the application of acute AA-tracer techniques; especially within certain populations. Here, we show that it is possible to quantify MPS over several hours without the need for cannulation or the iv infusion of expensive AA-tracers. Using an oral dose of D<sub>2</sub>O, we demonstrate that with collection of saliva and muscle samples it is possible to accurately quantify MPS over as short a period as 3 h in the postabsorptive state, whilst also being able to detect significant increases in MPS in the postprandial state. Furthermore, this technique pro-

duced comparable mean rates to that obtained when using traditional L-[ring-<sup>13</sup>C<sub>6</sub>]-phenylalanine tracers in the same individuals (see Fig. 4A).

Despite being the first stable isotope tracer to be used by the pioneers of the technique Schonheimer and Rittenberg in the 1930s (Schonheimer and Rittenberg 1935, 1938; Rittenberg and Schonheimer 1937), D<sub>2</sub>O has been largely overlooked in favor of metabolite-specific stable or radio-labeled tracers until the last decade when its reintroduction has garnered great interest (Dufner and Previs 2003; Gasier *et al.* 2010; Robinson *et al.* 2011; Wilkinson *et al.* 2014). Indeed D<sub>2</sub>O is advantageous for a number of reasons including the possibility to quantify turnover of multiple substrate pools; indeed, our laboratory, as well





**Figure 5.** (A) Bland–Altman plot of comparison between the two tracer methods, (B) Correlation between FSR values produced using each tracer method, (C) Correlation between the change in FSR due to anabolic stimulus (EAA feed).

as others have shown its novel utility for measuring the turnover of protein (Robinson *et al.* 2011; Wilkinson *et al.* 2014), lipids (Strawford *et al.* 2004), DNA (Busch *et al.* 2008) and glucose (Katanik *et al.* 2003) amongst others. By taking advantage of the relatively slow turnover rate of the body water pool (half-life  $\sim 11$  days (MacDonald *et al.* 2013; Wilkinson *et al.* 2014)) this also permits long-term measurements that are not possible with other techniques. For example, in a recent study (Wilkinson *et al.* 2014) we demonstrated the potential D<sub>2</sub>O has to detect changes in MPS over 2–8 days when using our highly sensitive analytical techniques, further to this its utility for measuring MPS over longer periods has also been highlighted (Robinson *et al.* 2011; Miller *et al.* 2013), with additional studies providing validation of this technique for MPS and plasma protein turnover measures (Belloto *et al.* 2007; Gasier *et al.* 2009). In the present

study, we have taken this a step further. Herein, we show that in providing a single-dose of D<sub>2</sub>O, we are able to acutely quantify MPS over periods of  $\sim 3$  h—equivalent to what is possible with traditional AA-tracers (see Fig. 4A). Moreover, using our sensitive techniques we show that D<sub>2</sub>O-derived FSR values yield rates of MPS that are extremely well aligned to those using traditional AA-tracer techniques in this and past studies (Mitchell *et al.* 2014; Phillips *et al.* 2014), which for myofibrillar FSR range between 0.02 and 0.07%·h<sup>-1</sup> (Kumar *et al.* 2009; Smith *et al.* 2011). This engenders confidence we are accurately measuring quantitative readouts of MPS; indeed, previous studies using the D<sub>2</sub>O tracer technique from other groups have yielded absolute rates of MPS far out-with normal ranges (8–10%·day<sup>-1</sup>; equivalent to  $\sim 0.3$ – $0.4$ %·h<sup>-1</sup>; (Gasier *et al.* 2012; Lambert *et al.* 2015)), when measuring using far less sensitive equipment to that in the present study (GC-MS compared to GC-IRMS), therefore providing doubts as to robustness of this previous data.

Proof-of-concept that the application of these D<sub>2</sub>O tracers is feasible over shorter periods also requires examination of the capacity to distinguish changes in response to anabolic or for that matter, catabolic stimuli. To determine this, we elected to provide an oral bolus of EAA since these are known to be the nutritional components responsible for postprandial stimulation of tissue synthesis (in this case, MPS). We showed that the associated plasma aminoacidemia led to an expected increase in MPS using both tracers (statistically different from baseline in comparison to tracer-respective postabsorptive values), and also that there were no means-based differences between the tracers either under postabsorptive or postprandial conditions. Therefore, our results reveal that the techniques we applied are robust not only in the context of accurate quantitation of MPS but also in response to a well-defined anabolic stimuli. Collectively, these findings demonstrate the potential for D<sub>2</sub>O to replace AA-tracers from the perspective of: (1) studying vulnerable populations (frail elderly, adolescent, clinical populations etc.); (2) reducing study invasiveness; (3) reducing clinical inputs; and (4) reducing study costs.

Whilst there are obvious benefits to this technique, we would also like to acknowledge some potential limitations. Using means-based analysis, both the use of D<sub>2</sub>O and L-[ring-<sup>13</sup>C<sub>6</sub>]-phenylalanine techniques produce similar rates of MPS, with a similar increase in MPS with a 20 g EAA bolus ( $\sim +0.02$ – $0.03$ %·h<sup>-1</sup>; see Fig. 4A). Despite the same qualitative change, on an individual basis the two techniques did not quantitatively agree in all subjects in terms of absolute rates (see Fig. 4B and C). Despite these quantitative differences, Bland–Altman plots revealed a relatively low bias between the two methods of

0.0083, which suggests that overall there were minimal differences between the methods; furthermore there was a significant correlation between the two (Fig. 5B). A similar finding was also observed previously when D<sub>2</sub>O was compared with a phenylalanine tracer in a rat model (Gasier et al. 2009); here the authors explained that the quantitative difference may have been due to the differences in measurement periods and methodologies between the phenylalanine and D<sub>2</sub>O techniques (12 min and 4 h respectively), and the methodologies used for tracer administration. Furthermore, Belloto et al. (2007) compared D<sub>2</sub>O with radiolabeled leucine tracers for the measurement of plasma apoB100-VLDL protein turnover, highlighting overall qualitatively comparable rates of turnover using the two methods similar to the present findings. In the present study, we believe that the discrepancy in the absolute rates may be due to analytical precision. Measurement precision for analysis of hydrogen using Pyrolysis-IRMS is ~1–2 delta in our hands on the presently used equipment (Delta V Advantage, Thermo Scientific) whilst carbon measurement precision via Combustion-IRMS is ~10 times greater than hydrogen at between 0.1 and 0.3 delta. Therefore, with such small delta shifts over 3 h for hydrogen, the measurement accuracy of this technique may affect the quantitative accuracy of the calculated rates somewhat. To combat this, one could increase the dosage of D<sub>2</sub>O to an appropriate level so that this measurement error is reduced, although this could introduce greater risk of adverse reaction (nausea, dizziness) in the individuals being tested, however, this could be avoided with provision of small regular doses over several hours. It should also be noted that there is no definitive methodology for performing such tracer validation studies, as each approach studied here comes with its own set of limitations and assumptions associated with the tracer and the calculations, but given this it is reassuring that there is a strong level of agreement between the two approaches.

In conclusion, here we show that D<sub>2</sub>O can act as an effective alternative to traditional AA-tracers when measuring MPS acutely. It only requires oral dosing of D<sub>2</sub>O 24 h prior to the measurement period, regular saliva samples, and appropriately positioned biopsy sampling. This reduces the need for additional invasive sampling and significantly reduces overall study costs, and subject burden, permitting measurement of MPS in clinical situations or study populations where it previously was not possible.

## Acknowledgments

We are grateful for the technical support of M. Baker and A. Gates.

## Conflict of Interest

The authors declare no conflict of interest.

## References

- Atherton, P. J., and K. Smith. 2012. Muscle protein synthesis in response to nutrition and exercise. *J. Physiol.* 590:1049–1057.
- Belloto, E., F. Diraison, A. Basset, G. Allain, P. Abdallah, and M. Beylot. 2007. Determination of protein replacement rates by deuterated water: validation of underlying assumptions. *Am. J. Physiol. Endocrinol. Metab.* 292:E1340–E1347.
- Busch, R., I. M. Siah, T. A. Gee, and M. K. Hellerstein. 2008. Heavy water labeling of DNA for measurement of cell proliferation and recruitment during primary murine lymph node responses against model antigens. *J. Immunol. Methods* 337:24–34.
- Dufner, D., and S. F. Previs. 2003. Measuring in vivo metabolism using heavy water. *Curr. Opin. Clin. Nutr. Metab. Care* 6:511–517.
- Gasier, H. G., S. E. Riechman, M. P. Wiggs, S. F. Previs, and J. D. Fluckey. 2009. A comparison of 2H<sub>2</sub>O and phenylalanine flooding dose to investigate muscle protein synthesis with acute exercise in rats. *Am. J. Physiol. Endocrinol. Metab.* 297:E252–E259.
- Gasier, H. G., J. D. Fluckey, and S. F. Previs. 2010. The application of 2H<sub>2</sub>O to measure skeletal muscle protein synthesis. *Nutr. Metab.* 7:31.
- Gasier, H. G., J. D. Fluckey, S. F. Previs, M. P. Wiggs, and S. E. Riechman. 2012. Acute resistance exercise augments integrative myofibrillar protein synthesis. *Metabolism* 61:153–156.
- Greenhaff, P. L., L. G. Karagounis, N. Peirce, E. J. Simpson, M. Hazell, R. Layfield, et al. 2008. Disassociation between the effects of amino acids and insulin on signaling, ubiquitin ligases, and protein turnover in human muscle. *Am. J. Physiol. Endocrinol. Metab.* 295:E595–E604.
- Husek, P., and H. M. Liebich. 1994. Organic acid profiling by direct treatment of deproteinized plasma with ethyl chloroformate. *J. Chromatogr. B Biomed. Appl.* 656:37–43.
- Katanik, J., B. J. McCabe, D. Z. Brunengraber, V. Chandramouli, F. J. Nishiyama, V. E. Anderson, et al. 2003. Measuring gluconeogenesis using a low dose of 2H<sub>2</sub>O: advantage of isotope fractionation during gas chromatography. *Am. J. Physiol. Endocrinol. Metab.* 284: E1043–E1048.
- Kumar, V., P. Atherton, K. Smith, and M. J. Rennie. 2009. Human muscle protein synthesis and breakdown during and after exercise. *J. Appl. Physiol.* 106:2026–2039.
- Lambert, B. S., K. L. Shimkus, J. D. Fluckey, S. E. Riechman, N. P. Greene, J. M. Cardin, et al. 2015. Anabolic responses to acute and chronic resistance exercise are enhanced when combined with aquatic treadmill exercise. *Am. J. Physiol. Endocrinol. Metab.* 308:E192–E200.



- MacDonald, A. J., A. C. Small, C. A. Greig, H. Husi, J. A. Ross, N. A. Stephens, et al. 2013. A novel oral tracer procedure for measurement of habitual myofibrillar protein synthesis. *Rapid Commun. Mass Spectrom.* 27:1769–1777.
- Miller, B. F., M. M. Robinson, D. J. Reuland, J. C. Drake, F. F. Peelor, M. D. Bruss, et al. 2013. Calorie restriction does not increase short-term or long-term protein synthesis. *J. Gerontol. A Biol. Sci. Med. Sci.* 68:530–538.
- Mitchell, W. K., B. E. Phillips, J. P. Williams, D. Rankin, J. N. Lund, K. Smith, et al. 2014. A dose- rather than delivery profile-dependent mechanism regulates the “muscle-full” effect in response to oral essential amino acid intake in young men. *J. Nutr.* 145:207–214.
- Phillips, B. E., P. J. Atherton, K. Varadhan, D. J. Wilkinson, M. Limb, A. L. Selby, et al. 2014. Pharmacological enhancement of leg and muscle microvascular blood flow does not augment anabolic responses in skeletal muscle of young men under fed conditions. *Am. J. Physiol. Endocrinol. Metab.* 306:E168–E176.
- Rennie, M. J., R. H. Edwards, D. Halliday, D. E. Matthews, S. L. Wolman, and D. J. Millward. 1982. Muscle protein synthesis measured by stable isotope techniques in man: the effects of feeding and fasting. *Clin. Sci. (Lond.)* 63:519–523.
- Rittenberg, D., and R. Schoenheimer. 1937. Deuterium as an indicator in the study of intermediary metabolism: XI. Further studies on the biological uptake of deuterium into organic substances, with special reference to fat and cholesterol formation. *J. Biol. Chem.* 121:235–253.
- Robinson, M. M., S. M. Turner, M. K. Hellerstein, K. L. Hamilton, and B. F. Miller. 2011. Long-term synthesis rates of skeletal muscle DNA and protein are higher during aerobic training in older humans than in sedentary young subjects but are not altered by protein supplementation. *FASEB J.* 25:3240–3249.
- Schoenheimer, R., and D. Rittenberg. 1935. Deuterium as an indicator in the study of intermediary metabolism. *Science* 82:156–157.
- Schoenheimer, R., and D. Rittenberg. 1938. The application of isotopes to the study of intermediary metabolism. *Science* 87:221–226.
- Smith, G. I., B. W. Patterson, and B. Mittendorfer. 2011. Human muscle protein turnover—why is it so variable? *J. Appl. Physiol.* 110:480–491.
- Strawford, A., F. Antelo, M. Christiansen, and M. K. Hellerstein. 2004. Adipose tissue triglyceride turnover, de novo lipogenesis, and cell proliferation in humans measured with 2H<sub>2</sub>O. *Am. J. Physiol. Endocrinol. Metab.* 286:E577–E588.
- Urey, H. C., F. Brickwedde, and G. Murphy. 1932. A hydrogen isotope of mass 2. *Phys. Rev.* 39:164.
- Wilkinson, D. J., M. V. Franchi, M. S. Brook, M. V. Narici, J. P. Williams, W. K. Mitchell, et al. 2014. A validation of the application of D(2)O stable isotope tracer techniques for monitoring day-to-day changes in muscle protein subfraction synthesis in humans. *Am. J. Physiol. Endocrinol. Metab.* 306:E571–E579.
- Wolfe, R. R., and D. L. Chinkes. 2005. *Isotope tracers in metabolic research: principles and practice of kinetic analysis*, 2nd edn. John Wiley & Sons Inc, Hoboken, NJ.
- Zhang, X. J., D. L. Chinkes, Y. Sakurai, and R. R. Wolfe. 1996. An isotopic method for measurement of muscle protein fractional breakdown rate in vivo. *Am. J. Physiol.* 270:E759–E767.
- Zhang, X.-J., N. A. Rodriguez, L. Wang, D. Tuvdendorj, Z. Wu, A. Tan, et al. 2012. Measurement of precursor enrichment for calculating intramuscular triglyceride fractional synthetic rate. *J. Lipid Res.* 53:119–125.