

LONDON
SCHOOL of
HYGIENE
& TROPICAL
MEDICINE



Kosiborod, Mikhail; Gomes, Marilia B; Nicolucci, Antonio; Pocock, Stuart; Rathmann, Wolfgang; Shestakova, Marina V; Watada, Hiro-taka; Shimomura, Iichiro; Chen, Hungta; Cid-Ruzafa, Javier; Fenici, Peter; Hammar, Niklas; Surmont, Filip; Tang, Fengming; Khunti, Kamlesh; DISCOVER investigators, (2018) Vascular complications in patients with type 2 diabetes: prevalence and associated factors in 38 countries (the DISCOVER study program). *Cardiovascular diabetology*, 17 (1). p. 150. ISSN 1475-2840 DOI: <https://doi.org/10.1186/s12933-018-0787-8>

Downloaded from: <http://researchonline.lshtm.ac.uk/4651255/>

DOI: [10.1186/s12933-018-0787-8](https://doi.org/10.1186/s12933-018-0787-8)

Usage Guidelines

Please refer to usage guidelines at <http://researchonline.lshtm.ac.uk/policies.html> or alternatively contact researchonline@lshtm.ac.uk.


Available under license: <http://creativecommons.org/licenses/by/2.5/>

ORIGINAL INVESTIGATION

Open Access



Vascular complications in patients with type 2 diabetes: prevalence and associated factors in 38 countries (the DISCOVER study program)

Mikhail Kosiborod^{1,2*} , Marilia B. Gomes³, Antonio Nicolucci⁴, Stuart Pocock⁵, Wolfgang Rathmann⁶, Marina V. Shestakova⁷, Hirotaka Watada⁸, Iichiro Shimomura⁹, Hungta Chen¹⁰, Javier Cid-Ruzafa¹¹, Peter Fenici¹², Niklas Hammar^{13,14}, Filip Surmont¹⁵, Fengming Tang¹ and Kamlesh Khunti¹⁶, for The DISCOVER investigators

Abstract

Background: The global prevalence of type 2 diabetes-related complications is not well described. We assessed prevalence of vascular complications at baseline in DISCOVER (NCT02322762; NCT02226822), a global, prospective, observational study program of 15,992 patients with type 2 diabetes initiating second-line therapy, conducted across 38 countries.

Methods: Patients were recruited from primary and specialist healthcare settings. Data were collected using a standardized case report form. Prevalence estimates of microvascular and macrovascular complications at baseline were assessed overall and by country and region, and were standardized for age and sex. Modified Poisson regression was used to assess factors associated with the prevalence of complications.

Results: The median duration of type 2 diabetes was 4.1 years (interquartile range [IQR]: 1.9–7.9 years), and the median glycated hemoglobin (HbA_{1c}) level was 8.0% (IQR: 7.2–9.1%). The crude prevalences of microvascular and macrovascular complications were 18.8% and 12.7%, respectively. Common microvascular complications were peripheral neuropathy (7.7%), chronic kidney disease (5.0%), and albuminuria (4.3%). Common macrovascular complications were coronary artery disease (8.2%), heart failure (3.3%) and stroke (2.2%). The age- and sex-standardized prevalence of microvascular complications was 17.9% (95% confidence interval [CI] 17.3–18.6%), ranging from 14.2% in the Americas to 20.4% in Europe. The age- and sex-standardized prevalence of macrovascular complications was 9.2% (95% CI 8.7–9.7%), ranging from 4.1% in South-East Asia to 18.8% in Europe. Factors positively associated with vascular complications included age (per 10-year increment), male sex, diabetes duration (per 1-year increment), and history of hypoglycemia, with rate ratios (95% CIs) for microvascular complications of 1.14 (1.09–1.19), 1.30 (1.20–1.42), 1.03 (1.02–1.04) and 1.45 (1.25–1.69), respectively, and for macrovascular complications of 1.41 (1.34–1.48), 1.29 (1.16–1.45), 1.02 (1.01–1.02) and 1.24 (1.04–1.48), respectively. HbA_{1c} levels (per 1.0% increment) were positively associated with microvascular (1.05 [1.02–1.08]) but not macrovascular (1.00 [0.97–1.04]) complications.

*Correspondence: mkosiborod@saint-lukes.org

¹ Saint Luke's Mid America Heart Institute, 4401 Wornall Road, Kansas City, MO 64111, USA

Full list of author information is available at the end of the article



Conclusions: The global burden of microvascular and macrovascular complications is substantial in these patients with type 2 diabetes who are relatively early in the disease process. These findings highlight an opportunity for aggressive early risk factor modification, particularly in regions with a high prevalence of complications.

Trial registration ClinicalTrials.gov; NCT02322762. Registered 23 December 2014. <https://clinicaltrials.gov/ct2/show/NCT02322762>. ClinicalTrials.gov; NCT02226822. Registered 27 August 2014. <https://clinicaltrials.gov/ct2/show/NCT02226822>

Keywords: Type 2 diabetes, Vascular complications, Observational study

Background

Type 2 diabetes is associated with disabling and potentially life-threatening microvascular and macrovascular complications [1, 2]. As many as 80% of patients with type 2 diabetes develop cardiovascular complications, which account for approximately 65% of deaths in this group [3–5]. The contribution of microvascular complications to type 2 diabetes morbidity is also substantial [2, 6]. Large prospective studies have demonstrated that intensive glycemic control decreases the incidence and delays the progression of microvascular complications in patients with type 2 diabetes [7–12]. The benefits of intensive glycemic control in reducing the incidence of macrovascular complications are less clear; however, previous studies have demonstrated that better glycemic control may modestly reduce the long-term risk of some macrovascular events. Furthermore, recent cardiovascular outcome trials [13, 14] and a large observational study [15] have suggested that some glucose-lowering agents may substantially improve cardiovascular outcomes in patients with type 2 diabetes.

Previous estimates from observational studies of the prevalence of vascular complications in patients with type 2 diabetes vary greatly [16–21], and a lack of standardization in the assessment methods used renders them difficult to compare. Better understanding of the burden of vascular complications in patients with type 2 diabetes across the globe is of considerable importance, particularly in countries where no data are currently available, because this will provide critically important information for decisions on health policy, including strategies for complication prevention.

There is a paucity in particular regarding global, comparative data on baseline characteristics, treatment pathways and outcomes in patients with type 2 diabetes who are relatively early in the disease process at the time of initiating second-line glucose-lowering therapy. It is particularly important to obtain comparative data, given the plethora of second-line treatment options for patients with type 2 diabetes, compared with the first-line setting in which metformin monotherapy is well established and recommended by major treatment guidelines. To address this important knowledge gap, we initiated DISCOVER

(NCT02322762, NCT02226822), a 3-year, prospective, observational study program of patients with type 2 diabetes initiating second-line therapy, conducted in 38 countries across six continents [22, 23]. Here, we report the baseline data from DISCOVER to describe the prevalence of vascular complications in patients with type 2 diabetes across multiple countries and regions, using standardized methodology.

Methods

The methods for the DISCOVER study have been reported in detail elsewhere [22, 23] and are briefly summarized below.

Study design

The DISCOVER program is a noninterventional, 3-year, prospective observational study program conducted across 38 countries and comprising two similar studies: DISCOVER in 37 countries (NCT02322762) and J-DISCOVER in Japan (NCT02226822). The study protocol was approved by the appropriate clinical research ethics committees in each participating country and the relevant institutional review boards at each site. The protocol complies with the Declaration of Helsinki, the International Conference on Harmonisation of Good Clinical Practice, and the local regulations for clinical research.

Countries and regional definition

The countries included in the study were separated into regions according to World Health Organization classification [24]: Africa (Algeria and South Africa); the Americas (Argentina, Brazil, Canada, Colombia, Costa Rica, Mexico, and Panama); South-East Asia (India and Indonesia); Europe (Austria, Czech Republic, Denmark, France, Italy, Netherlands, Norway, Poland, Russia, Spain, Sweden, and Turkey); the Eastern Mediterranean region (Bahrain, Egypt, Jordan, Kuwait, Lebanon, Oman, Saudi Arabia, Tunisia, and United Arab Emirates); and the Western Pacific region (Australia, China, Japan, Malaysia, South Korea, and Taiwan).

Site and investigator selection

National coordinating investigators of participating countries provided information on the management of patients with type 2 diabetes in their country, including types of physicians (primary care practitioners, diabetologists, endocrinologists, cardiologists, and other specialists), types of practices (primary care centers and different types of hospital), locations of practices (urban or rural), and geographical distribution within each country. Information from the national coordinating investigators and data from literature searches were reviewed to establish a list of sites that would be as representative as possible of the management of patients with type 2 diabetes in each country. Sites were then invited to participate, and those that accepted were included in the study.

Patient enrollment

All inclusion and exclusion criteria are shown in Additional file 1: Table S1. Eligible patients with type 2 diabetes initiating a second-line glucose-lowering treatment (add-on or switching) after a first-line oral monotherapy or combination therapy were invited to participate in the study by their physician. Patients using an injectable agent (i.e. insulin or a glucagon-like peptide-1 receptor agonist) as first-line therapy were excluded because they may have had a more severe disease profile that would warrant a separate study. All participating patients provided signed informed consent.

Data collection

Baseline data were collected at initiation of second-line therapy. In most countries, the investigators collected data using a standardized electronic case report form, and data were transferred to a central database via a web-based data capture system. In the process of data cleaning and preparation for analyses, data were checked for internal consistency and outliers (impossible values) were identified. Variables recorded at baseline included: demographic and socioeconomic characteristics, physiological parameters (blood pressure, pulse rate, weight, height, body mass index [BMI] and waist circumference), change in glucose-lowering therapy and reason(s) for change, glycated hemoglobin (HbA_{1c}) level and other laboratory parameters (blood test and urine test results [22]), occurrence of major and minor hypoglycemic events, comorbidities (including microvascular and macrovascular complications), comedications, and patient-reported outcomes. Duration of diabetes was assessed as time since diagnosis. In line with the observational nature of the study, information with regard to glycemic control and other clinical variables was collected as measured

in routine clinical practice at each site, according to the local standard of care. Similarly, the study protocol did not mandate the screening for or adjudication of complication occurrence.

Vascular complications

Investigators collected information on patients' history of complications or related procedures from medical records. Patients who had experienced either micro- or macrovascular disease prior to their diabetes diagnosis were not excluded. Diagnosis and classification of complications relied on the judgment of investigators. The following vascular complications were assessed:

- microvascular: nephropathy (presence of chronic kidney disease and/or albuminuria), retinopathy (history of retinopathy or retinal laser photocoagulation), and neuropathy (autonomic neuropathy, peripheral neuropathy, and erectile dysfunction)
- macrovascular: coronary artery disease (history of coronary artery disease, angina, myocardial infarction, percutaneous coronary intervention, and coronary artery bypass grafting), cerebrovascular disease (stroke, transient ischemic attack, carotid artery stenting, and carotid endarterectomy), peripheral artery disease (history of peripheral artery disease including revascularization procedures, diabetic foot, and amputation), heart failure, and implantable cardioverter defibrillator use.

Statistical analysis

The minimum sample size was estimated to be 11,100 [22]. This sample size was based on the intention to have at least 200 patients comprising any given group or meeting any of the pre-specified endpoints to be analyzed, and an estimated attrition rate of 15% per year of follow-up, as described in detail elsewhere [22]. Descriptive data are presented as numbers (percentages), means (standard deviations [SD]), and medians (interquartile ranges [IQR]), as appropriate. The crude prevalence of microvascular and macrovascular complications is reported overall, and by country and region. In order to correct for geographical variations, regional and country-level prevalence estimates were also standardized for age and sex using a logistic regression model.

Factors associated with complications were assessed using a modified Poisson model with cluster-based sandwich variance estimator [25], to account for patient clustering within countries. The following variables were included in the model, based on a literature review and clinical judgment: age, sex, education level, smoking status, BMI, systolic blood pressure (SBP), HbA_{1c} , total

cholesterol, duration of diabetes, history of hypoglycemia (minor event in the previous month or major event in the previous year), and use of angiotensin-converting enzyme (ACE) inhibitors or angiotensin receptor blockers (ARBs), diuretics, β -blockers, statins, and acetylsalicylic acid (ASA). Data were reported in >90% of patients for all of these variables except HbA_{1c} (not reported in 20.1% of patients) and total cholesterol (not reported in 42.3% of patients). To account for unreported data, the multiple imputation method was used for missing values. A comparison of the characteristics of patients with reported data for all variables included in the modified Poisson model, and patients with unreported data for either HbA_{1c} or total cholesterol, is shown in Additional file 1: Table S2. The following sensitivity analyses were conducted: (1) an analysis including only patients with complete data; and (2) an analysis with additional variables for site specialty and patient-reported ethnicity (ethnicity and specialty information was not collected in Canada, and specialty was not collected in France; these two countries were thus excluded from this analysis). Rate ratios for the associations between complication prevalence and SBP, total cholesterol levels, and comedication use were not reported owing to reverse-causality (we hypothesized that patients with diabetes complications often have high SBP and cholesterol levels and receive comedications, rather than these factors causing vascular complications), although these factors were adjusted for in the model.

Imputation was carried out using IVEware (University of Michigan, MI, USA). All other statistical analyses were carried out using the SAS statistical software system (SAS Institute, Inc., Cary, NC, USA).

Results

Baseline patient characteristics

The overall population included 15,992 patients. Baseline characteristics are presented in Table 1. In total, 54.2% of patients were male; 49.7% were Asian, and 25.6% were Caucasian. The mean age was 57.2 years (SD, 12.0 years), ranging from 53.1 years in South-East Asia to 61.9 years in Europe. The median duration of diabetes was 4.1 years (IQR across countries: 1.9–7.9 years), varying across regions from 3.4 years in South-East Asia and the Western Pacific region to 5.7 years in Africa. The median HbA_{1c} level at baseline was 8.0% (IQR across countries: 7.2–9.1%) and varied across regions from 7.6% in the Western Pacific to 8.3% in South-East Asia and the Eastern Mediterranean region. The mean BMI was 29.1 kg/m² (SD, 5.9 kg/m²) and was lowest in the Western Pacific region (26.1 kg/m²) and highest in Europe (31.9 kg/m²).

The most common first-line therapy was metformin monotherapy, both overall (56.8%) and across all regions

(range 42.5–83.6%). The second most commonly prescribed first-line therapy was sulfonylurea monotherapy in the Americas (6.8%), dipeptidyl peptidase-4 inhibitor monotherapy in the Western Pacific region (25.0%), and combinations of metformin and a sulfonylurea in other regions (range 8.3–31.1%).

Prevalence of microvascular complications

The crude prevalence of microvascular complications was 18.8% overall; it was greatest in Europe (23.5%) and lowest in Africa (14.5%; Table 2). Crude country-level prevalence estimates are shown in Additional file 1: Table S3. The crude prevalence was 7.7% for peripheral neuropathy, 5.0% for chronic kidney disease, 4.3% for albuminuria, 3.9% for retinopathy, 2.7% for erectile dysfunction, 1.0% for autonomic neuropathy and 0.6% for retinal laser photocoagulation (Table 2). Peripheral neuropathy was the most prevalent microvascular disease diagnosis in all regions except the Western Pacific (the most prevalent microvascular disease in the Western Pacific was chronic kidney disease). After standardization for age and sex, the prevalence of microvascular complications was 17.9% (95% confidence interval [CI] 17.3–18.6%) overall; it remained highest in Europe (20.4% [95% CI 19.0–22.0%]) and was lowest in the Americas (14.2% [95% CI 12.7–16.0%]), ranging across countries from 2.0 to 40.9% (Fig. 1a). Within Europe, the age- and sex-standardized prevalence of microvascular complications was 37.3% in Russia and ranged from 4.8 to 23.0% in the other countries in the region. When excluding Russia from the analysis, the prevalence in Europe was 16.9%.

Prevalence of macrovascular complications

The crude prevalence of macrovascular complications was 12.7% overall and was greatest in Europe (26.7%) and lowest in South-East Asia (4.0%; Table 2). Crude country-level prevalence estimates are shown in Additional file 1: Table S3. The crude prevalence was 8.2% for coronary artery disease, 3.3% for heart failure, 2.2% for stroke, 1.2% for peripheral artery disease, 0.7% for transient ischemic attack, and 0.1% each for carotid artery stent, carotid endarterectomy, and defibrillator use (Table 2). After standardization for age and sex, the prevalence of macrovascular complications was 9.2% (95% CI 8.7–9.7%) overall; it remained greatest in Europe (18.8% [95% CI 17.4–20.3%]) and lowest in South-East Asia (4.1% [95% CI 3.5–4.9%]), ranging across countries from 3.2 to 41.6% (Fig. 1b). When excluding Russia from the analysis, the age- and sex-standardized prevalence of macrovascular complications in Europe was 13.7% and remained the highest across the regions.

The most prevalent macrovascular complication in all regions was coronary artery disease (2.7–18.1% across

Table 1 Patient demographics and baseline characteristics, overall and according to region

	Total (N = 15,992)	Africa (n = 812)	Americas (n = 2002)	South- East Asia (n = 3360)	Europe (n = 3479)	Eastern Mediterranean (n = 2182)	Western Pacific (n = 4157)
Proportion of overall population (%)	100.0	5.1	12.5	21.0	21.8	13.6	26.0
Sex, male, n (%)	8664 (54.2)	306 (37.7)	963 (48.1)	1852 (55.1)	1856 (53.4)	1278 (58.6)	2409 (58.0)
Age, years, mean (SD)	57.2 (12.0)	54.9 (11.2)	58.3 (11.8)	53.1 (11.3)	61.9 (10.9)	53.8 (10.8)	58.5 (12.6)
Self-reported ethnicity, n (%)							
Caucasian	3917 (25.6)	105 (12.9)	480 (29.4)	1 (0.0)	3020 (94.8)	165 (7.6)	146 (3.5)
Black	310 (2.0)	235 (29.0)	61 (3.7)	0 (0.0)	13 (0.4)	0 (0.0)	1 (0.0)
Mixed	213 (1.4)	91 (11.2)	115 (7.0)	0 (0.0)	4 (0.1)	0 (0.0)	3 (0.1)
Asian	7610 (49.7)	177 (21.8)	9 (0.6)	3339 (99.5)	20 (0.6)	72 (3.3)	3993 (96.1)
Hispanic	942 (6.2)	1 (0.1)	928 (56.8)	0 (0.0)	11 (0.3)	0 (0.0)	2 (0.0)
Arabic	2151 (14.0)	200 (24.7)	4 (0.2)	2 (0.1)	12 (0.4)	1933 (88.9)	0 (0.0)
Other	174 (1.1)	2 (0.2)	36 (2.2)	15 (0.4)	104 (3.3)	5 (0.2)	12 (0.3)
If Asian							
Chinese	1604 (21.1)	0 (0.0)	1 (11.1)	52 (1.6)	2 (10.5)	0 (0.0)	1549 (38.8)
South Asian	2602 (34.2)	60 (33.9)	2 (22.2)	2406 (72.1)	9 (47.4)	46 (63.9)	79 (2.0)
East Asian	433 (5.7)	22 (12.4)	1 (11.1)	48 (1.4)	5 (26.3)	16 (22.2)	341 (8.5)
Other Asian	2971 (39.0)	95 (53.7)	5 (55.6)	833 (24.9)	3 (15.8)	10 (13.9)	2025 (50.7)
Time in formal education, n (%)							
No formal education	471 (3.2)	57 (7.3)	50 (3.2)	26 (0.8)	78 (2.5)	158 (7.7)	102 (2.7)
Primary (1–6 years)	2295 (15.8)	183 (23.3)	442 (28.7)	343 (10.4)	588 (19.1)	360 (17.6)	379 (10.0)
Secondary (7–13 years)	7190 (49.4)	420 (53.5)	587 (38.1)	1431 (43.2)	1781 (58.0)	767 (37.5)	2204 (58.0)
Higher (> 13 years)	4599 (31.6)	125 (15.9)	463 (30.0)	1514 (45.7)	626 (20.4)	759 (37.1)	1112 (29.3)
Diabetes duration since diagnosis, years							
Mean (SD)	5.6 (5.3)	6.9 (5.7)	6.2 (6.1)	4.6 (4.1)	6.6 (5.4)	5.8 (5.1)	5.1 (5.4)
Median (IQR)	4.1 (1.9–7.9)	5.7 (2.9–9.3)	4.4 (1.9–8.7)	3.4 (2.0–6.1)	5.4 (2.7–9.1)	4.2 (2.1–8.0)	3.4 (1.0–7.6)
HbA _{1c} (%)							
Mean (SD)	8.3 (1.7)	8.6 (1.9)	8.5 (1.9)	8.6 (1.7)	8.1 (1.6)	8.7 (1.6)	8.1 (1.7)
Median (IQR)	8.0 (7.2–9.1)	8.0 (7.4–9.4)	8.0 (7.2–9.4)	8.3 (7.5–9.6)	7.8 (7.2–8.7)	8.3 (7.6–9.4)	7.6 (7.0–8.7)
BMI, kg/m ² , mean (SD)	29.1 (5.9)	30.6 (6.2)	30.6 (6.1)	27.3 (4.5)	31.9 (6.1)	31.1 (5.7)	26.1 (5.0)
Tobacco smoking, n (%)							
Nonsmoker	10,831 (69.4)	633 (78.9)	1299 (66.1)	3066 (91.7)	2001 (59.9)	1579 (74.0)	2253 (56.1)
Ex-smoker	2537 (16.3)	93 (11.6)	460 (23.4)	128 (3.8)	791 (23.7)	189 (8.9)	876 (21.8)
Current smoker	2232 (14.3)	76 (9.5)	205 (10.4)	151 (4.5)	546 (16.4)	366 (17.2)	888 (22.1)
SBP, mmHg, mean (SD)	132.3 (16.5)	134.2 (18.6)	131.2 (17.7)	128.8 (15.2)	136.4 (16.6)	133.3 (15.7)	131.6 (16.0)
DBP, mmHg, mean (SD)	79.9 (10.0)	80.1 (10.5)	80.6 (10.6)	79.9 (8.4)	81.1 (9.6)	79.8 (9.7)	78.6 (10.9)
TC, mg/dl, mean (SD)	187.0 (47.1)	179.1 (41.1)	182.1 (46.1)	179.8 (48.7)	190.6 (49.9)	189.6 (47.8)	189.6 (43.7)
History of hypoglycemia ^a , n (%)	700 (4.6)	50 (6.4)	60 (3.8)	96 (2.9)	141 (4.2)	155 (7.8)	198 (4.9)

Table 1 (continued)

	Total (N = 15,992)	Africa (n = 812)	Americas (n = 2002)	South- East Asia (n = 3360)	Europe (n = 3479)	Eastern Mediterranean (n = 2182)	Western Pacific (n = 4157)
Comedication, n (%)							
ACEi or ARB	5862 (36.7)	315 (38.8)	827 (41.3)	990 (29.5)	1785 (51.3)	715 (32.8)	1230 (29.6)
Diuretic	1867 (11.7)	223 (27.5)	250 (12.5)	203 (6.0)	780 (22.4)	197 (9.0)	214 (5.1)
β-blocker	2158 (13.5)	87 (10.7)	277 (13.8)	257 (7.6)	978 (28.1)	277 (12.7)	282 (6.8)
Statin	6710 (42.0)	360 (44.3)	826 (41.3)	1497 (44.6)	1534 (44.1)	997 (45.7)	1496 (36.0)
ASA	2562 (16.0)	214 (26.4)	374 (18.7)	278 (8.3)	776 (22.3)	485 (22.2)	435 (10.5)
First-line therapy, n (%)							
MET mono- therapy	9076 (56.8)	679 (83.6)	1545 (77.2)	1505 (44.8)	2517 (72.4)	1063 (48.7)	1767 (42.5)
SU monotherapy	1230 (7.7)	27 (3.3)	137 (6.8)	186 (5.5)	269 (7.7)	288 (13.2)	323 (7.8)
DPP-4i mono- therapy	1194 (7.5)	1 (0.1)	40 (2.0)	43 (1.3)	53 (1.5)	19 (0.9)	1038 (25.0)
Other mono- therapy	631 (3.9)	2 (0.2)	17 (0.8)	36 (1.1)	59 (1.7)	13 (0.6)	504 (12.1)
MET + SU	2300 (14.4)	73 (9.0)	135 (6.7)	1045 (31.1)	287 (8.3)	518 (23.8)	242 (5.8)
MET + DPP-4i	497 (3.1)	1 (0.1)	92 (4.6)	123 (3.7)	94 (2.7)	130 (6.0)	57 (1.4)
MET + other (dual therapy)	266 (1.7)	18 (2.2)	3 (0.1)	61 (1.8)	56 (1.6)	16 (0.7)	112 (2.7)
Other combina- tions	794 (5.0)	11 (1.4)	33 (1.6)	361 (10.7)	141 (4.1)	134 (6.1)	114 (2.7)

Percentages calculated for all patients with data available; unreported data are excluded

ACEi angiotensin-converting-enzyme inhibitor, ARB angiotensin receptor blocker, ASA acetylsalicylic acid, BMI body mass index, DBP diastolic blood pressure, DPP-4i dipeptidyl peptidase-4 inhibitor, HbA_{1c} glycated hemoglobin, IQR interquartile range, MET metformin, SBP systolic blood pressure, SD standard deviation, SU sulfonylurea, TC total cholesterol

^a Minor hypoglycemic event in the previous month or major hypoglycemic event in the previous year

regions; 8.2% overall), with myocardial infarction most reported in Africa, the Americas, and Europe (4.0–6.6%), and percutaneous coronary intervention most reported in South-East Asia, the Eastern Mediterranean region, and the Western Pacific (0.6–3.2%). The most frequently reported macrovascular complications, after coronary artery disease and its components, were heart failure in Africa, the Americas, and Europe (0.9–10.7%), and stroke in South-East Asia, the Eastern Mediterranean region, and the Western Pacific (0.6–3.6%).

Multivariable analysis

Similar factors were found to have a statistically significant positive association with the prevalence of both microvascular and macrovascular complications (Fig. 2). These included age (per 10-year increment; microvascular—rate ratio: 1.14 [95% CI 1.09–1.19]; macrovascular—rate ratio: 1.41 [95% CI 1.34–1.48]), male sex (1.30 [1.20–1.42] and 1.29 [1.16–1.45]), having a low level of education (0–6 years in formal education relative to > 13 years; 1.17 [1.05–1.30] and 1.19 [1.01–1.39]), duration of diabetes since diagnosis (per 1-year increment; 1.03 [1.02–1.04] and 1.02 [1.01–1.02]), and having a history of any hypoglycemic event (minor event in the previous month or major

event in the previous year; 1.45 [1.25–1.69 and 1.24 [1.04–1.48]). Increased mean baseline HbA_{1c} levels (per 1.0% increment) were positively associated with microvascular (rate ratio: 1.05 [95% CI 1.02–1.08]) but not macrovascular (rate ratio: 1.00 [95% CI 0.97–1.04]) complications. Being either a former or current smoker was positively associated with macrovascular complications (1.31 [1.20–1.40] and 1.24 [1.07–1.43]) relative to being a non-smoker.

Results from the sensitivity analyses including only patients with complete data (Additional file 1: Figure S1) and with additional variables for site specialty and patient-reported ethnicity (Additional file 1: Figure S2) were similar to those from the main analysis. Specialty and ethnicity were not associated with microvascular or macrovascular complications, with the exception of lower rates of macrovascular complications with self-reported black versus Caucasian ethnicity and higher rates of macrovascular complications with self-reported East Asian versus Caucasian ethnicity.

Discussion

This large, prospective study of close to 16,000 patients with type 2 diabetes initiating second-line glucose-lowering therapy is being conducted in 38 countries across

Table 2 Crude prevalence of microvascular or macrovascular diseases and related procedures at baseline, overall and according to region

	Total (N = 15,992)	Africa (n = 812)	Americas (n = 2002)	South-East Asia (n = 3360)	Europe (n = 3479)	Eastern Mediterranean (n = 2182)	Western Pacific (n = 4157)
Any microvascular disease, n (%)	3005 (18.8)	118 (14.5)	302 (15.1)	556 (16.5)	812 (23.5)	399 (18.3)	818 (19.7)
CKD	794 (5.0)	20 (2.5)	90 (4.5)	23 (0.7)	257 (7.4)	31 (1.4)	373 (9.0)
Albuminuria	605 (4.3)	21 (2.6)	40 (2.0)	188 (5.6)	195 (5.6)	91 (4.2)	70 (3.1)
Retinopathy	624 (3.9)	22 (2.7)	68 (3.4)	30 (0.9)	198 (5.7)	69 (3.2)	237 (5.7)
Retinal laser photocoagulation	98 (0.6)	4 (0.5)	17 (0.8)	1 (0.0)	14 (0.4)	9 (0.4)	53 (1.3)
Autonomic neuropathy	155 (1.0)	1 (0.1)	9 (0.4)	40 (1.2)	28 (0.8)	25 (1.1)	52 (1.3)
Peripheral neuropathy	1237 (7.7)	47 (5.8)	114 (5.7)	324 (9.6)	324 (9.4)	181 (8.3)	247 (5.9)
Erectile dysfunction	426 (2.7)	38 (4.7)	65 (3.2)	28 (0.8)	115 (3.3)	102 (4.7)	78 (1.9)
Any macrovascular disease, n (%)	2027 (12.7)	74 (9.1)	232 (11.6)	135 (4.0)	915 (26.7)	218 (10.0)	453 (10.9)
Heart failure	527 (3.3)	7 (0.9)	54 (2.7)	18 (0.5)	368 (10.7)	23 (1.1)	57 (1.4)
CAD	1310 (8.2)	59 (7.3)	151 (7.5)	91 (2.7)	622 (18.1)	172 (7.9)	215 (5.2)
Angina	473 (3.0)	19 (2.3)	53 (2.6)	10 (0.3)	262 (7.6)	40 (1.8)	89 (2.1)
Myocardial infarction	445 (2.8)	39 (4.8)	80 (4.0)	18 (0.5)	228 (6.6)	31 (1.4)	49 (1.2)
PCI	424 (2.7)	10 (1.2)	62 (3.1)	19 (0.6)	184 (5.4)	70 (3.2)	79 (1.9)
CABG	140 (0.9)	10 (1.2)	17 (0.8)	13 (0.4)	71 (2.1)	15 (0.7)	14 (0.3)
Stroke	352 (2.2)	4 (0.5)	35 (1.7)	20 (0.6)	114 (3.3)	29 (1.3)	150 (3.6)
Transient ischemic attack	107 (0.7)	3 (0.4)	14 (0.7)	1 (0.0)	36 (1.0)	17 (0.8)	36 (0.9)
Carotid artery stent	16 (0.1)	0 (0.0)	1 (0.0)	0 (0.0)	7 (0.2)	4 (0.2)	4 (0.1)
Carotid endarterectomy	16 (0.1)	0 (0.0)	0 (0.0)	0 (0.0)	12 (0.3)	1 (0.0)	3 (0.1)
PAD	197 (1.2)	4 (0.5)	15 (0.7)	2 (0.1)	108 (3.1)	10 (0.5)	58 (1.4)
Diabetic foot	87 (0.5)	4 (0.5)	20 (1.0)	15 (0.4)	32 (0.9)	7 (0.3)	9 (0.2)
Amputation	32 (0.2)	6 (0.7)	12 (0.6)	1 (0.0)	9 (0.3)	3 (0.1)	1 (0.0)
Defibrillator use	8 (0.1)	0 (0.0)	0 (0.0)	0 (0.0)	7 (0.2)	0 (0.0)	1 (0.0)

Percentages calculated for all patients with data available; unreported data are excluded

CABG coronary artery bypass grafting, CAD coronary artery disease, CKD chronic kidney disease, PAD peripheral artery disease, PCI percutaneous coronary intervention

six continents. The burden of both microvascular and macrovascular complications at second-line therapy initiation, assessed using a standardized methodology, was found to be substantial and varied markedly between regions and countries. This study is one of the first to offer a truly global view of the prevalence of vascular complications among patients with type 2 diabetes who are at relatively early stages of their disease. DISCOVER also includes many lower- and upper-middle-income countries, for which no data on the prevalence of diabetes complications were previously available.

When standardized for age and sex, the highest prevalence of microvascular and macrovascular complications was found in Europe, where patients also had the highest mean BMI and blood pressure, which are important cardiovascular risk factors [26]. These findings could also be explained by rates of screening for complications being

higher in Europe than in other regions, or by a greater proportion of patients seen in specialty settings. Across the European countries, Russia had the highest prevalence of microvascular and macrovascular complications. These observations are supported by Russian state diabetes registry data, which show a high prevalence of recorded vascular disease in patients with type 2 diabetes, including 18.6% for diabetic neuropathy and 13.0% for diabetic retinopathy [27]. When excluding Russia from our analysis, the prevalence in Europe of macrovascular complications, but not that of microvascular complications, remained the highest across all regions.

Our multivariable analysis of factors potentially associated with complication prevalence identified positive correlations between microvascular and macrovascular complications and age, male sex, low level of education, diabetes duration, and history of hypoglycemia. Other

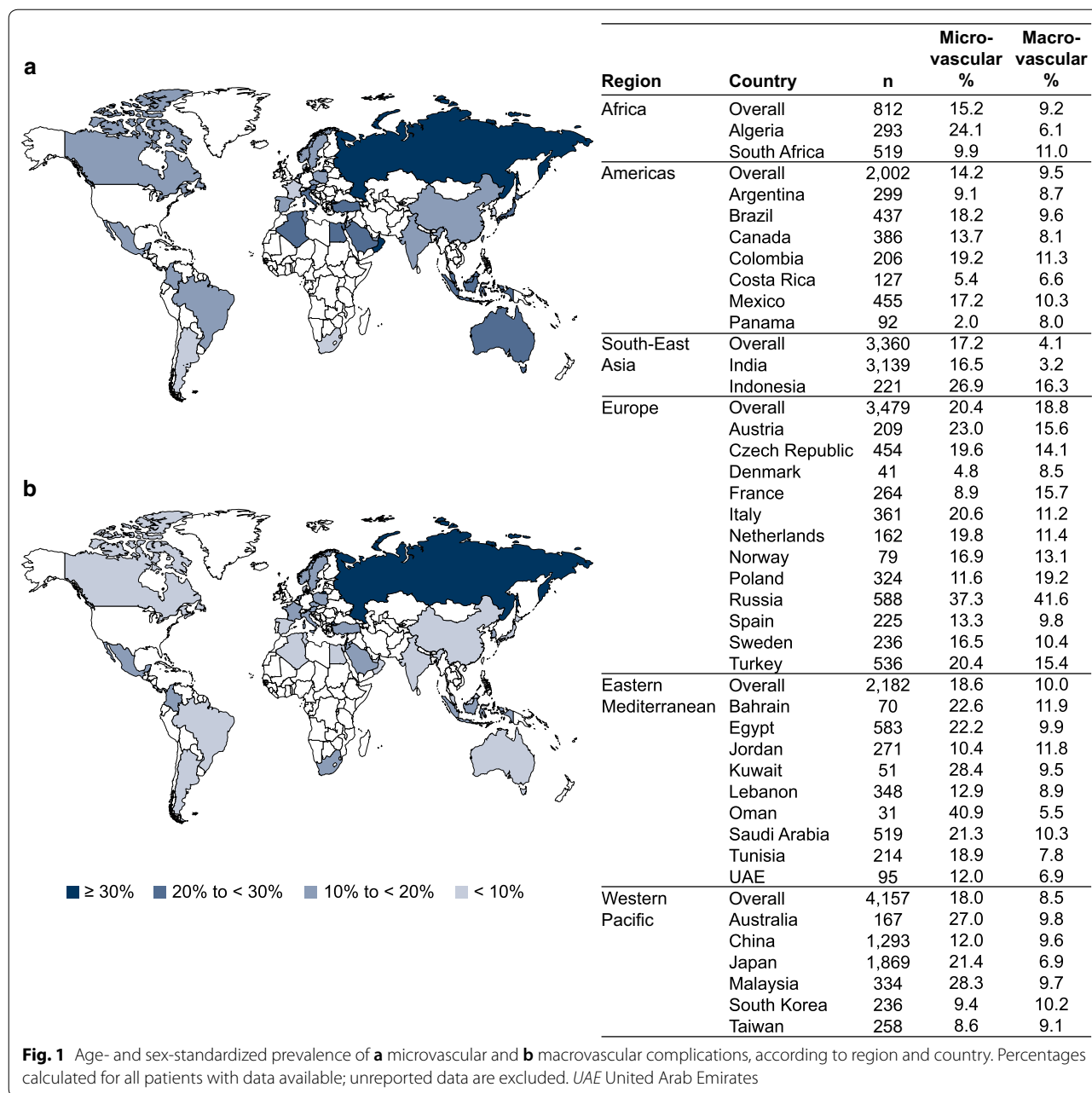
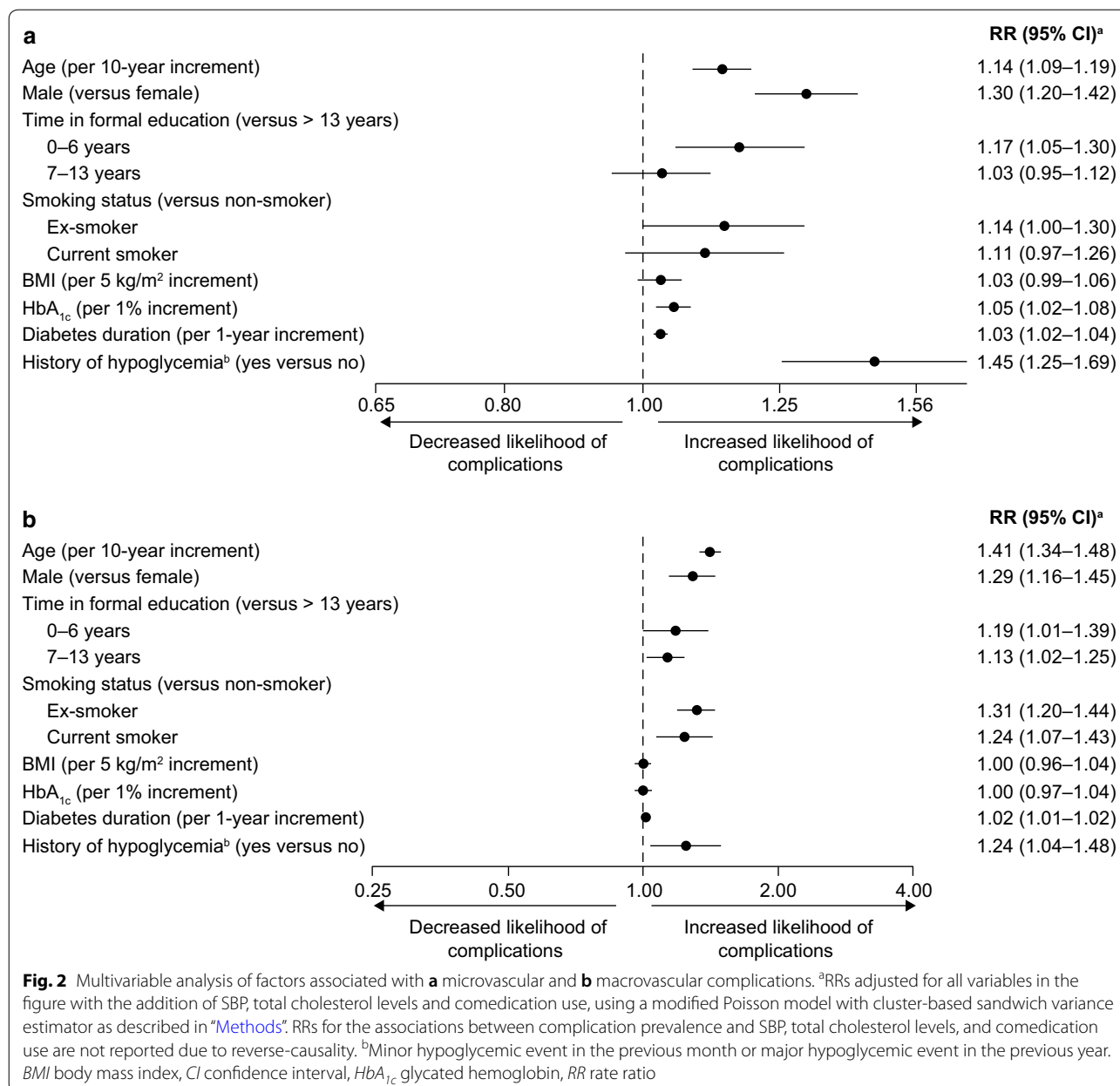


Fig. 1 Age- and sex-standardized prevalence of **a** microvascular and **b** macrovascular complications, according to region and country. Percentages calculated for all patients with data available; unreported data are excluded. UAE United Arab Emirates

research has shown that greater and more prolonged exposure to hyperglycemia, as would occur in patients with a long duration of uncontrolled type 2 diabetes, increases the risk of both microvascular and macrovascular complications [28]. Of note, a significant association was observed in the current analysis between HbA_{1c} level and microvascular, but not macrovascular, complications. This is consistent with previous findings that intensive glycemic control decreases the incidence of microvascular complications, with much less certainty in terms of its effects on macrovascular events [7–12, 29].

Large, international, observational studies that have reported the prevalence of vascular complications in patients with type 2 diabetes are rare. The A₁chieve study was a global, prospective, observational study of more than 66,000 patients with type 2 diabetes from 28 countries in Asia, Africa, Europe, and South America, and reported a prevalence of microvascular complications at baseline of 53.5%, and of macrovascular complications of 27.2% [21]. However, the patients included in that study were initiating insulin analogs, typically administered after failure to achieve target HbA_{1c} levels with other



glucose-lowering drugs. Consequently, the patients in A₁chieve had a much longer duration of diabetes than those in DISCOVER (mean 8.0 vs 5.6 years) and a higher mean baseline HbA_{1c} level (9.5% vs 8.4%).

The IMPROVE study, conducted in eight countries and involving more than 50,000 patients receiving insulin therapy, also reported a high prevalence of both microvascular and macrovascular complications (45.0% and 28.0%, respectively) [30]. Again, the mean duration of diabetes (6.9 years) and mean HbA_{1c} levels (9.4%) were higher in IMPROVE than in the DISCOVER study. The International Diabetes Management Practice Study (IDMPS) was

conducted in 18 developing countries across Asia, Eastern Europe, and Latin America. The prevalence estimates reported for microvascular and macrovascular complications were again high at 55.3% and 26.1%, respectively [31]. In this survey of a general population of patients with type 2 diabetes, the mean diabetes duration was 8.4 years, and 31% of patients were treated with insulin, either on its own or in combination with oral agents.

The differences in patient characteristics between A₁chieve, IMPROVE, IDMPS, and DISCOVER are likely to explain the differences in the observed rates of vascular complications. All three of the previous studies included

patients with longer-term disease than in DISCOVER. Our study is therefore the first global observational study of its kind, evaluating a population of patients with a much shorter disease duration.

Our findings highlight a key opportunity for improved monitoring of complications, and the importance of early and aggressive risk factor modification. This is in line with current practice guidelines; for example, the European Society of Cardiology guidelines for cardiovascular disease prevention consider patients with diabetes to be at very high cardiovascular risk, regardless of other risk factors, and therefore recommend statin treatment in addition to intensive blood pressure management for all patients [32]. The American Heart Association and American Diabetes Association similarly recommend intensive management of cardiovascular risk factors in patients with diabetes [33]. As outlined in the American Diabetes Association/European Association for the Study of Diabetes joint position statement, it is also important to consider classes of glucose-lowering medications with positive impacts on cardiovascular risk factors, especially in patients with established cardiovascular disease [34]. In a recent, large cohort study, patients with type 2 diabetes who had levels of HbA_{1c}, cholesterol, serum albumin and blood pressure all within target ranges, and who did not smoke, were at similar risk of myocardial infarction or stroke as age-, sex- and country-matched controls [35]. Risk scores can help clinicians identify patients with type 2 diabetes who are at low or high risk of vascular disease [36, 37].

The main strengths of the DISCOVER study include its prospective design, the large number of patients enrolled, and the participation of lower- and upper-middle-income countries where patients have rarely, or never, been studied previously. The use of a standardized electronic case report form is another key strength of the study, allowing valid comparisons of results within and across countries and regions worldwide. In addition, sites were selected in a way intended to ensure that the enrolled patient population is as diverse and representative as possible of the general population of patients with type 2 diabetes.

Our findings should, nevertheless, be interpreted in the context of several potential limitations. The ascertainment and diagnosis of diabetes-related vascular complications were based on the judgment of individual physicians, and we could not determine whether the complications occurred before or after the diagnosis of type 2 diabetes. In some countries, rural sites do not have any established infrastructure for data collection, and primary care practitioners may be insufficiently trained, or not permitted, to conduct observational research. In these countries, where rural sites and primary care settings are necessarily under-represented, the quality of healthcare is likely to be overestimated.

The observational nature of the DISCOVER study means that the study protocol does not mandate screening for complications, and that the presence and severity of complications are not adjudicated. The reported prevalence estimates may therefore be underestimates, because physicians may not be aware of complications in some patients. In many lower- and upper-middle-income countries participating in DISCOVER, fundus cameras used for retinopathy screening may be inaccessible to many patients, particularly in rural areas [38].

In the present analysis, we considered erectile dysfunction to be a microvascular complication, and diabetic foot to be a macrovascular complication. However, no assessment of the underlying pathophysiology of these conditions in individual patients was made. Finally, imputation was required during the multivariable analysis to account for some unreported data, in particular for HbA_{1c} and total cholesterol. This is consistent with the noninterventive nature of the DISCOVER study, whereby laboratory values and other clinical variables are measured according to standard clinical practice at each site. In several countries, measurement of biomarkers including HbA_{1c} and total cholesterol may not be covered by health insurance, and may therefore not be routinely measured for all patients.

Conclusions

The prevalence of microvascular and macrovascular complications in patients with type 2 diabetes at second-line therapy initiation, assessed using a standardized methodology, varied markedly across regions and countries worldwide, and highlighted significant opportunities for better risk factor modification and prevention. Across all regions, Europe had the highest prevalence of both microvascular complications and macrovascular complications, the former being driven by high rates in Russia. Over the coming years, the DISCOVER study program will add to our understanding by providing follow-up longitudinal data on the incidence of complications following initiation of second- and later-line therapies.

Additional file

Additional file 1: Table S1. Inclusion and exclusion criteria. DDP-4 dipeptidyl peptidase-4. ^a≥ 20 years in Japan. ^bIn Japan, only patients using an oral monotherapy as first-line treatment were included. **Table S2.** Comparisons between patients for whom either HbA_{1c} or total cholesterol data are unreported, and those with complete HbA_{1c} and total cholesterol data. ACEi angiotensin-converting-enzyme inhibitor, ARB angiotensin receptor blocker, ASA acetylsalicylic acid, BMI body mass index, HbA_{1c} glycated hemoglobin, SBP systolic blood pressure, SD standard deviation, TC total cholesterol. ^aPatients with reported data for all variables included in the hierarchical logistic model. ^bp values calculated for continuous variables using Student's *t*-test, and for categorical variables using the χ^2 or Fisher's exact test, as appropriate. ^cMinor hypoglycemic event in the previous month or major hypoglycemic event in the previous year.

Table S3. Number and proportion of patients with microvascular and macrovascular complications according to country (unadjusted). Percentages were calculated for all patients with data available; unreported data were excluded. UAE United Arab Emirates. **Figure S1.** Sensitivity analysis including only patients with complete data to assess factors associated with (A) microvascular and (B) macrovascular complications. ^aRRs adjusted for all variables in the figure with the addition of SBP, total cholesterol levels and comedication use, using a modified Poisson model with cluster-based sandwich variance estimator as described in "Methods". RRs for the associations between complication prevalence and SBP, total cholesterol levels, and comedication use are not reported due to reverse-causality. ^bMinor hypoglycemic event in the previous month or major hypoglycemic event in the previous year. *BMI* body mass index, *CI* confidence interval, *HbA_{1c}* glycated hemoglobin, *RR* rate ratio. **Figure S2.** Sensitivity analysis with additional variables for site specialty and patient-reported ethnicity to assess factors associated with (A) microvascular and (B) macrovascular complications. ^aRRs adjusted for all variables in the figure with the addition of SBP, total cholesterol levels and comedication use, using a modified Poisson model with cluster-based sandwich variance estimator as described in "Methods". RRs for the associations between complication prevalence and SBP, total cholesterol levels, and comedication use are not reported due to reverse-causality. ^bMinor hypoglycemic event in the previous month or major hypoglycemic event in the previous year. *BMI* body mass index, *CI* confidence interval, *HbA_{1c}* glycated hemoglobin, *RR* rate ratio.

Abbreviations

ACE: angiotensin-converting enzyme; ARB: angiotensin receptor blocker; ASA: acetylsalicylic acid; BMI: body mass index; DBP: diastolic blood pressure; DPP-4i: dipeptidyl peptidase-4 inhibitor; HbA_{1c}: glycated hemoglobin; IQR: interquartile range; MET: metformin; SBP: systolic blood pressure; SD: standard deviation; SU: sulfonyleurea; TC: total cholesterol.

Authors' contributions

All authors contributed to the development of the manuscript, and all authors approved the final version before submission. An AstraZeneca team reviewed the manuscript during its development and was allowed to make suggestions. However, the final content was determined by the authors. MK is the guarantor of this work. All authors read and approved the final manuscript.

Author details

¹ Saint Luke's Mid America Heart Institute, 4401 Wornall Road, Kansas City, MO 64111, USA. ² University of Missouri, Kansas City, 5100 Rockhill Rd, Kansas City, MO 64110, USA. ³ Rio de Janeiro State University, Av 28 de Setembro 77, Rio de Janeiro CEP20555-030, Brazil. ⁴ Center for Outcomes Research and Clinical Epidemiology, Via Tiziano Vecellio, 2, 65124 Pescara, Italy. ⁵ London School of Hygiene and Tropical Medicine, Keppel St, Bloomsbury, London WC1E 7HT, UK. ⁶ Institute for Biometrics and Epidemiology, German Diabetes Center, Auf'm Hennekamp 65, 40225 Düsseldorf, Germany. ⁷ Endocrinology Research Center, Moskvorech'ye Ulitsa, 1, Moscow 115478, Russian Federation. ⁸ Graduate School of Medicine, Juntendo University, 2-1-1 Hongo, Bunkyo-ku, Tokyo 113-8421, Japan. ⁹ Graduate School of Medicine, Osaka University, 2-2 Yamadaoka, Suita, Osaka 565-0871, Japan. ¹⁰ AstraZeneca, 950 Wind River Ln, Gaithersburg, MD 20878, USA. ¹¹ Evidera, Metro Building, 6th Floor, 1 Butterwick, London W6 8DL, UK. ¹² AstraZeneca, 132 Hills Rd, Cambridge CB2 1PG, UK. ¹³ AstraZeneca Gothenburg, Pepparedsleden 1, 431 50 Mölndal, Sweden. ¹⁴ Institute of Environmental Medicine, Karolinska Institutet, Solnavägen 1, 171 77 Solna, Sweden. ¹⁵ AstraZeneca, 600 Capability Green, Luton LU1 3LU, UK. ¹⁶ University of Leicester, University Rd, Leicester LE1 7RH, UK.

Acknowledgements

The authors would like to thank all investigators and patients participating in the DISCOVER study program. Medical writing support was provided by Stephen Sweet, Ph.D. and Stéphane Pintat, Ph.D. of Oxford PharmaGenesis, Oxford, UK, funded by AstraZeneca.

Competing interests

MK, MBG, AN, SP, WR, MVS, HW, IS, and KK are members of the DISCOVER Scientific Committee and received support from AstraZeneca to attend

DISCOVER planning and update meetings. HC, PF, NH, and FS are employees of AstraZeneca. JC-R is an employee of Evidera. In addition, MK has received honoraria from Amgen, AstraZeneca, Boehringer Ingelheim, GlaxoSmithKline, Glytec Systems, Intarcia, Janssen, Merck, Novo Nordisk, Novartis, Sanofi, and ZS Pharma; and research support from AstraZeneca and Boehringer Ingelheim; MBG has received honoraria from Merck-Serono; AN has received honoraria from AstraZeneca, Eli Lilly, Medtronic, and Novo Nordisk, and research support from AstraZeneca; Dexcom, Novo Nordisk, and Sanofi-Aventis; SP has received honoraria from AstraZeneca; WR has received honoraria from AstraZeneca and research support from Novo Nordisk; MVS has received honoraria from AstraZeneca, Boehringer Ingelheim, Eli Lilly, Merck Sharp & Dohme, Novo Nordisk, and Sanofi, and research support from Sanofi; HW has received honoraria from Astellas Pharma, AstraZeneca, Boehringer Ingelheim, Daiichi Sankyo, Dainippon Sumitomo Pharma, Eli Lilly, Kissei Pharma, Kowa, Kyowa Hakko Kirin, Merck Sharp & Dohme, Mitsubishi Tanabe Pharma, Novo Nordisk, Novartis, Ono Pharmaceutical, Sanofi, Sanwa Kagaku Kenkyusho, and Takeda, and research support from Abbott, Astellas Pharma, AstraZeneca, Bayer, Benefit One Health Care, Boehringer Ingelheim, Bristol-Myers Squibb, Daiichi Sankyo, Dainippon Sumitomo Pharma, Eli Lilly, Kissei Pharma, Kowa, Kyowa Hakko Kirin, Johnson & Johnson, Merck Sharp & Dohme, Mitsubishi Tanabe Pharma, Mochida Pharmaceutical, Nitto Boseki, Novartis, Novo Nordisk, Ono Pharmaceutical, Pfizer, Sanofi, Sanwa Kagaku Kenkyusho, Taisho Toyama Pharmaceutical, Takeda, and Terumo Corp; IS has received honoraria from Astellas Pharma, AstraZeneca, Boehringer Ingelheim, Kowa, Merck Sharp & Dohme, Mitsubishi Tanabe Pharma, Novo Nordisk, Ono Pharmaceutical, Sanwa Kagaku Kenkyusho, and Takeda Pharmaceutical, and research support from Astellas Pharma, AstraZeneca, Daiichi Sankyo, Eli Lilly, Japan Foundation for Applied Enzymology, Japan Science and Technology Agency, Kowa, Kyowa Hakko Kirin, Midori Health Management Center, Mitsubishi Tanabe Pharma, Novo Nordisk, Ono Pharmaceutical, Sanofi, Suzuken Memorial Foundation, and Takeda Pharmaceutical; FT has received research support from AstraZeneca; and KK has received honoraria from AstraZeneca, Boehringer Ingelheim, Eli Lilly, Janssen, Merck Sharp & Dohme, Novartis, Novo Nordisk, Roche, and Sanofi, and is additionally supported by the National Institute for Health Research Collaboration for Leadership in Applied Health Research and Care East Midlands.

Availability of data and materials

Data underlying the findings described in this manuscript may be obtained in accordance with AstraZeneca's data sharing policy described at <https://astrazenecagrouptrials.pharmacm.com/ST/Submission/Disclosure>.

Consent for publication

Not applicable.

Ethics approval and consent to participate

The study protocol was approved by the appropriate clinical research ethics committees in each participating country and the relevant institutional review boards at each site. The protocol complies with the Declaration of Helsinki, the International Conference on Harmonisation of Good Clinical Practice, and the local regulations for clinical research. All participating patients provided signed informed consent.

Funding

The DISCOVER study program is funded by AstraZeneca. DISCOVER is a non-interventional study, and no drugs are supplied or funded.

Publisher's Note

Springer Nature remains neutral with regard to jurisdictional claims in published maps and institutional affiliations.

Received: 30 July 2018 Accepted: 6 November 2018

Published online: 28 November 2018

References

1. American Diabetes Association. Standards of medical care in diabetes. *Diabetes Care*. 2017;40:S1–129.
2. Fowler MJ. Microvascular and macrovascular complications of diabetes. *Clin Diabetes*. 2011;3:116–22.
3. Buse JB, Ginsberg HN, Bakris GL, Clark NG, Costa F, Eckel R, et al. Primary prevention of cardiovascular diseases in people with diabetes mellitus: a scientific statement from the American heart association and the American diabetes association. *Circulation*. 2007;115:114–26.
4. Grundy SM, Benjamin EJ, Burke GL, Chait A, Eckel RH, Howard BV, et al. Diabetes and cardiovascular disease: a statement for healthcare professionals from the American Heart Association. *Circulation*. 1999;100:1134–46.
5. Kirkman MS, McCarren M, Shah J, Duckworth W, Abiraira C. The association between metabolic control and prevalent macrovascular disease in Type 2 diabetes: the VA Cooperative Study in diabetes. *J Diabetes Complicat*. 2006;20:75–80.
6. Mohammadi K, Woodward M, Marre M, Colagiuri S, Cooper M, Harrap S, et al. Comparative effects of microvascular and macrovascular disease on the risk of major outcomes in patients with type 2 diabetes. *Cardiovasc Diabetol*. 2017;16:95.
7. Patel A, MacMahon S, Chalmers J, Neal B, Billot L, Woodward M, et al. Intensive blood glucose control and vascular outcomes in patients with type 2 diabetes. *N Engl J Med*. 2008;358:2560–72.
8. Holman RR, Paul SK, Bethel MA, Matthews DR, Neil HA. 10-year follow-up of intensive glucose control in type 2 diabetes. *N Engl J Med*. 2008;359:1577–89.
9. King P, Peacock I, Donnelly R. The UK prospective diabetes study (UKPDS): clinical and therapeutic implications for type 2 diabetes. *Br J Clin Pharmacol*. 1999;48:643–8.
10. Ohkubo Y, Kishikawa H, Araki E, Miyata T, Isami S, Motoyoshi S, et al. Intensive insulin therapy prevents the progression of diabetic microvascular complications in Japanese patients with non-insulin-dependent diabetes mellitus: a randomized prospective 6-year study. *Diabetes Res Clin Pract*. 1995;28:103–17.
11. Stratton IM, Adler AI, Neil HA, Matthews DR, Manley SE, Cull CA, et al. Association of glycaemia with macrovascular and microvascular complications of type 2 diabetes (UKPDS 35): prospective observational study. *BMJ*. 2000;321:405–12.
12. Casanova F, Adingupu DD, Adams F, Gooding KM, Looker HC, Aizawa K, et al. The impact of cardiovascular co-morbidities and duration of diabetes on the association between microvascular function and glycaemic control. *Cardiovasc Diabetol*. 2017;16:114.
13. Zinman B, Wanner C, Lachin JM, Fitchett D, Bluhmki E, Hantel S, et al. Empagliflozin, cardiovascular outcomes, and mortality in type 2 diabetes. *N Engl J Med*. 2015;373:2117–28.
14. Marso SP, Daniels GH, Brown-Frandsen K, Kristensen P, Mann JF, Nauck MA, et al. Liraglutide and cardiovascular outcomes in type 2 diabetes. *N Engl J Med*. 2016;375:311–22.
15. Kosiborod M, Cavender MA, Fu AZ, Wilding JP, Khunti K, Holl RW, et al. Lower risk of heart failure and death in patients initiated on sodium-glucose cotransporter-2 inhibitors versus other glucose-lowering drugs: the CVD-REAL study (comparative effectiveness of cardiovascular outcomes in new users of sodium-glucose cotransporter-2 inhibitors). *Circulation*. 2017;136:249–59.
16. Yokoyama H, Oishi M, Takamura H, Yamasaki K, Shirabe SI, Uchida D, et al. Large-scale survey of rates of achieving targets for blood glucose, blood pressure, and lipids and prevalence of complications in type 2 diabetes (JDDM 40). *BMJ Open Diabetes Res Care*. 2016;4:e000294.
17. Norhammar A, Bodegard J, Nystrom T, Thuresson M, Eriksson JW, Nathanson D. Incidence, prevalence and mortality of type 2 diabetes requiring glucose-lowering treatment, and associated risks of cardiovascular complications: a nationwide study in Sweden, 2006–2013. *Diabetologia*. 2016;59:1692–701.
18. Agrawal RP, Ola V, Bishnoi P, Gothwal S, Sirohi P, Agrawal R. Prevalence of micro and macrovascular complications and their risk factors in type 2 diabetes mellitus. *J Assoc Physicians India*. 2014;62:504–8.
19. Alonso-Moran E, Orueta JF, Fraile Esteban JI, Arteagoitia Axpe JM, Marques Gonzalez ML, Toro Polanco N, et al. The prevalence of diabetes-related complications and multimorbidity in the population with type 2 diabetes mellitus in the Basque Country. *BMC Public Health*. 2014;14:1059.
20. Das AK, Seshiah V, Sahay BK, Kumar A, Asirvatham AJ, Balaji V, et al. Improving management practices and clinical outcomes in type 2 diabetes study: prevalence of complications in people with type 2 diabetes in India. *Indian J Endocrinol Metab*. 2012;16:S430–1.
21. Litwak L, Goh SY, Hussein Z, Malek R, Prusty V, Khamseh ME. Prevalence of diabetes complications in people with type 2 diabetes mellitus and its association with baseline characteristics in the multinational A,chieve study. *Diabetol Metab Syndr*. 2013;5:57.
22. Ji L, Bonnet F, Charbonnel B, Gomes MB, Kosiborod M, Khunti K, et al. Towards an improved global understanding of treatment and outcomes in people with type 2 diabetes: rationale and methods of the DISCOVER observational study program. *J Diabetes Complicat*. 2017;37:1188–96.
23. Katakami N, Mita T, Takahara M, Hashigami K, Kawashima M, Shimomura I, et al. Rationale and design for the J-DISCOVER study: DISCOVERing the treatment reality of type 2 diabetes in a real-world setting in Japan-A protocol. *Diabetes Ther*. 2018;9:165–75.
24. World Health Organization. World health statistics. 2016. http://www.who.int/gho/publications/world_health_statistics/en/. Accessed 25 Oct 2018.
25. Zou GY, Donner A. Extension of the modified Poisson regression model to prospective studies with correlated binary data. *Stat Methods Med Res*. 2013;22:661–70.
26. Masmiquel L, Leiter LA, Vidal J, Bain S, Petrie J, Franek E, et al. LEADER 5: prevalence and cardiometabolic impact of obesity in cardiovascular high-risk patients with type 2 diabetes mellitus: baseline global data from the LEADER trial. *Cardiovasc Diabetol*. 2016;15:29.
27. Dedov II, Shestakova MV, Vikulova OK. Epidemiology of diabetes mellitus in Russian Federation: clinical and statistical report according to the federal diabetes registry. *Diabetes Mellit*. 2017;20:13–41.
28. van Wijngaarden RPT, Overbeek JA, Heintjes EM, Schubert A, Diels J, Straatman H, et al. Relation between different measures of glycemic exposure and microvascular and macrovascular complications in patients with type 2 diabetes mellitus: an observational cohort study. *Diabetes Ther*. 2017;8:1097–109.
29. Bots SH, van der Graaf Y, Nathoe HM, de Borst GJ, Kappelle JL, Visseren FL, et al. The influence of baseline risk on the relation between HbA1c and risk for new cardiovascular events and mortality in patients with type 2 diabetes and symptomatic cardiovascular disease. *Cardiovasc Diabetol*. 2016;15:101.
30. Valensi P, Benroubi M, Borzi V, Gumprecht J, Kawamori R, Shaban J, et al. The IMPROVE study—a multinational, observational study in type 2 diabetes: baseline characteristics from eight national cohorts. *Int J Clin Pract*. 2008;62:1809–19.
31. Chan JC, Gagliardino JJ, Baik SH, Chantelot JM, Ferreira SR, Hancu N, et al. Multifaceted determinants for achieving glycemic control: the international diabetes management practice study (IDMPS). *Diabetes Care*. 2009;32:227–33.
32. Piepoli MF, Hoes AW, Agewall S, Albus C, Brotons C, Catapano AL, et al. 2016 European guidelines on cardiovascular disease prevention in clinical practice: the sixth joint task force of the European society of cardiology and other societies on cardiovascular disease prevention in clinical practice (constituted by representatives of 10 societies and by invited experts). Developed with the special contribution of the European Association for Cardiovascular Prevention & Rehabilitation (EACPR). *Eur Heart J*. 2016;37:2315–81.
33. Fox CS, Golden SH, Anderson C, Bray GA, Burke LE, de Boer IH, et al. Update on prevention of cardiovascular disease in adults with type 2 diabetes mellitus in light of recent evidence: a scientific statement from the American Heart Association and the American Diabetes Association. *Circulation*. 2015;132:691–718.
34. Inzucchi SE, Bergenstal RM, Buse JB, Diamant M, Ferrannini E, Nauck M, et al. Management of hyperglycemia in type 2 diabetes, 2015: a patient-centered approach: update to a position statement of the American Diabetes Association and the European Association for the Study of Diabetes. *Diabetes Care*. 2015;38:140–9.
35. Rawshani A, Rawshani A, Franzen S, Sattar N, Eliasson B, Svensson AM, et al. Risk factors, mortality, and cardiovascular outcomes in patients with type 2 diabetes. *N Engl J Med*. 2018;379:633–44.
36. van der Leeuw J, van Dieren S, Beulens JW, Boeing H, Spijkerman AM, van der Graaf Y, et al. The validation of cardiovascular risk scores for patients with type 2 diabetes mellitus. *Heart*. 2015;101:222–9.

37. Woodward M, Hirakawa Y, Kengne AP, Matthews DR, Zoungas S, Patel A, et al. Prediction of 10-year vascular risk in patients with diabetes: the AD-ON risk score. *Diabetes Obes Metab*. 2016;18:289–94.
38. Sommer A, Taylor HR, Ravilla TD, West S, Lietman TM, Keenan JD, et al. Challenges of ophthalmic care in the developing world. *JAMA Ophthalmol*. 2014;132:640–4.

Ready to submit your research? Choose BMC and benefit from:

- fast, convenient online submission
- thorough peer review by experienced researchers in your field
- rapid publication on acceptance
- support for research data, including large and complex data types
- gold Open Access which fosters wider collaboration and increased citations
- maximum visibility for your research: over 100M website views per year

At BMC, research is always in progress.

Learn more biomedcentral.com/submissions

