

Cite this: DOI: 10.1039/xxxxxxxxxx

Polymorphism of nanocrystalline TiO₂ prepared in a stagnation flame: Formation of TiO₂-II phase[†]

Manoel Y. Manuputty,^{a,b} Jochen A. H. Dreyer,^{a,b} Yuan Sheng^{b,c}, Eric J. Bringley,^a Maria L. Botero,^{b,d} Jethro Akroyd,^{a,b} and Markus Kraft^{*,a,b,c}

Received Date

Accepted Date

DOI: 10.1039/xxxxxxxxxx

www.rsc.org/journalname

A metastable “high-pressure” phase known as the α -PbO₂-type TiO₂ or TiO₂-II is prepared in a single-step synthesis using a laminar premixed stagnation flame. Three other TiO₂ polymorphs, namely anatase, rutile and TiO₂-B phases, can also be obtained by tuning the oxygen/fuel ratio. The TiO₂-II is observed as a mixture with rutile in oxygen-lean flame conditions. To the best of our knowledge, this is the first time this phase has been identified in flame-synthesised TiO₂. The formation of TiO₂-II in an atmospheric pressure flame cannot be explained thermodynamically and is hypothesised to be kinetically driven through the oxidation and solid-state transformation of a sub-oxide TiO_{2-x} intermediate. In this scenario, rutile is nucleated from the metastable TiO₂-II phase instead of directly from a molten/amorphous state. Mixtures containing three-phase heterojunction of anatase, rutile, and TiO₂-II nanoparticles as prepared here in slightly oxygen-lean flames might be important in photocatalysis due to enhanced electron-hole separation.

1 Introduction

Flame synthesis is widely used to manufacture functional metal oxide nanoparticles for applications including thermochemical analysis, chemical sensing, photocatalysis, and electrocatalysis^{1,2}. Advantages over other synthesis techniques are that the nanoparticles can be prepared through a one-step process^{3,4} and that the high temperature gradients inside the flame facilitate the formation of particles with unique properties⁵. One such material that is frequently encountered in the field of flame synthesis is titanium dioxide.

A key attraction of flame-made TiO₂ nanoparticles (TiO₂-NPs) is the ability to readily tune properties such as particle size, aggregate morphology, and phase composition by controlling the synthesis conditions. These structural properties in turn control the catalytic activity of the formed TiO₂-NPs^{6,7}. For example, the performance of TiO₂ photocatalysts can be greatly enhanced by making use of anatase/rutile heterojunctions when compared to

either pristine phase⁶. Both anatase and rutile have been shown to form in a flame synthesis^{8–10}. In certain conditions brookite has been observed although only in trace amounts¹¹. Recently, metastable phase TiO₂-B^{12,13} has also been identified to form during flame synthesis¹⁴. Various studies demonstrated that the phase composition of flame-made TiO₂-NPs can be controlled by changing the oxygen/fuel equivalence ratio^{10,14}, TiO₂ precursor loading^{8,10}, presence of an external electric field¹⁵ or laser irradiation¹⁶, and dopant concentration¹⁷.

Three important factors affecting the stability of various TiO₂ polymorphs have been identified, namely particle size, oxidising environment, and temperature. Zhang and Banfield¹⁸ demonstrated that for equally sized nanoparticles at 900–1000 K, anatase was the most stable phase for particles smaller than 11 nm, brookite for particles between sizes 11 and 35 nm, and rutile for particles larger than 35 nm. For particles with similar size, the anatase-rutile composition was shown to be highly sensitive to the oxidant/reductant equivalence ratio, with rutile preferred in oxygen-lean and anatase in oxygen-rich flame environments^{8,10}. It was suggested that the formation of oxygen vacancies plays an important role in the rutile stabilisation. Recently Liu *et al.*⁹ expanded the thermodynamic analysis of Zhang and Banfield¹⁸ to include surface oxygen adsorption/desorption, which showed good agreement with their experimental observations. This treatment, however, was only applicable to the anatase and rutile system at thermodynamic equilibrium. Other works have suggested that kinetically-driven processes should be considered in the TiO₂ phase transformation. For example, Mao *et al.*¹⁹ demonstrated a

^a Department of Chemical Engineering and Biotechnology, University of Cambridge, West Site, Philippa Fawcett Drive, Cambridge, CB3 0AS, United Kingdom. E-mail: mk306@cam.ac.uk

^b Cambridge Centre for Advanced Research and Education in Singapore (CARES), CREATE Tower, 1 Create Way, 138602, Singapore

^c School of Chemical and Biomedical Engineering, Nanyang Technological University, 62 Nanyang Drive, 637459, Singapore

^d Department of Mechanical Engineering, National University of Singapore, 9 Engineering Drive 1, 117575, Singapore

[†] Electronic Supplementary Information (ESI) available: (1) particle size and morphology, (2) FFT analysis of HRTEM images, and (3) XPS C 1s fitting. See DOI: 10.1039/b000000x/

sintering-induced anatase-to-brookite transformation in 2–3 nm particles using molecular dynamic simulations.

In addition to the structures mentioned above, crystalline TiO_2 can exist in other, lesser-studied, polymorphic forms such as TiO_2 -II (Columbite) and TiO_2 -H (Hollandite). TiO_2 -II, an orthorhombic high-pressure phase of TiO_2 isostructural with $\alpha\text{-PbO}_2$, is of particular interest in this work. Although pure TiO_2 -II is only thermodynamically stable at high pressure conditions, experiments and first-principles studies have shown that it can be retained at ambient pressure as a metastable phase²⁰. TiO_2 -II has been found in nature as a mixture with rutile in ultra-high pressure metamorphic minerals^{21,22}. Zhao *et al.*²³ suggested that small domains of TiO_2 -II could be stabilised at a three-phase anatase/ TiO_2 -II/rutile junction. They predicted that such a three-phase junction will lead to a synergistic effect in mixed-phase TiO_2 catalysts to enhance the electron-hole separation in photocatalysis. However, the role of TiO_2 -II as photocatalyst is still inconclusive as the properties are strongly dependent on the synthesis routes used^{24–26}.

Herein we demonstrate, for the first time, the formation of the TiO_2 -II phase at atmospheric pressure via stagnation flame synthesis in addition to the commonly observed phases anatase and rutile, as well as the previously reported metastable phase TiO_2 -B. The relative composition of these phases is strongly dependent on the oxygen/fuel ratio in the synthesis. The formation of metastable phases and their dependence on the oxidising environment give new insights into the phase formation and transformation mechanisms of TiO_2 -NPs in flames. The role of phase composition in the TiO_2 photocatalytic activity is discussed further by Wu *et al.*²⁷.

2 Methods

2.1 Sample synthesis

The TiO_2 nanoparticles (NPs) in this study were prepared with a premixed flame stabilised on a stagnation surface. A similar setup has been described in more detail elsewhere^{8,28}. Briefly, a mixture of ethylene, oxygen, and argon was issued from a central aerodynamic nozzle with a total volumetric flow rate of 28 slpm. The nozzle had an exit diameter of 1.4 cm, resulting in an exit velocity of 436 cm/s at 150°C. The nozzle shape induced a flat plug flow of premixed gas that impinged on a stagnation surface. Titanium tetraisopropoxide (TTIP, $\geq 97\%$, Sigma-Aldrich) was injected into the unburned gas mixture with a syringe pump at 8 ml/h. The gas line, precursor line, and burner surface were heated to 150°C to prevent TTIP condensation. During the experiment, the undoped flame was first stabilised for 15 minutes before TTIP was injected for 4 minutes. A shroud flow of 20 slpm N_2 gas was used to stabilise the jet flow.

Two types of stagnation surfaces were located 1 cm under the nozzle to stabilise the flame by flow stretch and to accommodate a substrate for collecting the TiO_2 sample. The first one was a rotating (300 rpm), circular stainless steel plate with its rotational axis located at 10 cm from the burner centerline (Fig. 1). Slots in the stagnation surface enabled the positioning of glass substrates while the plate rotation convectively cooled the substrate and the

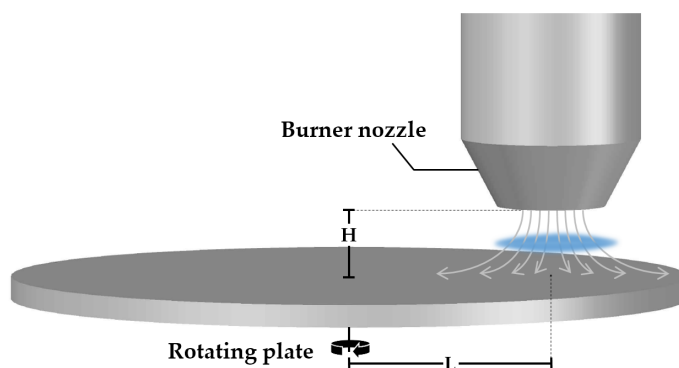


Fig. 1 Schematic of the stagnation flame stabilised on a rotating plate (not drawn to scale). A burner nozzle is fixed at $H = 1$ cm above the rotating plate and at $L = 10$ cm from the rotational axis.

deposited particles. In the second configuration, a water-cooled non-rotating plate was used as the stagnation surface. In both cases, a flat flame was stabilised at 3–3.5 mm above the stagnation plate depending on the flame equivalence ratio. The equivalence ratio, ϕ , defined as the ratio of O_2 required for the complete oxidation of introduced C_2H_4 divided by the actual amount of available O_2 , was varied as summarised in Table 1. After the 4 min of TiO_2 formation, the sample was carefully scraped off from the glass substrate and used as prepared for further analyses.

Table 1 Flame mixture composition and the calculated flame adiabatic temperatures.

ϕ	Mixture mole fractions			T_{ad} (K)
	C_2H_4	O_2	Ar	
0.35	0.035	0.300	0.665	2073
0.50	0.035	0.210	0.755	2141
0.70	0.040	0.172	0.788	2327
0.80	0.040	0.150	0.810	2336
0.90	0.045	0.150	0.805	2437
1.00	0.050	0.150	0.800	2500
1.10	0.054	0.147	0.799	2518
1.30	0.061	0.141	0.798	2454
1.50	0.075	0.150	0.775	2422
1.67	0.103	0.185	0.712	2542
2.00	0.130	0.195	0.675	2402
2.30	0.172	0.224	0.604	2340
2.50	0.209	0.251	0.540	2309

2.2 Materials characterisation

Powder X-ray diffraction (XRD) patterns were recorded with a D8 Advance diffractometer (Bruker) with $\text{Cu K}\alpha$ radiation (40 kV, 30 mA). The 2θ scan range was 20–90° with a step size of 0.02° and 3 s per step. Zero-background silicon sample holders were used with powder samples pressed to create a dense film.

X-ray photoelectron spectra (XPS) were recorded using Kratos AXIS Ultra photoelectron spectrometer (Kratos Analytical Ltd.) fitted with a monochromatic $\text{Al K}\alpha$ source (1486.71 eV, 5 mA, 15 kV). The photoelectrons were collected at an electron take-off

angle of 90°. The binding energy shift is corrected by setting the C–C binding energy to 284.8 eV.

Transmission electron microscopy (TEM) images and selected area electron diffraction (SAED) patterns were taken with a JEM-2100F FETEM (JEOL Ltd.) with 200 kV accelerating voltage. The TEM samples were prepared by applying a few drops of TiO₂ suspension in ethanol on TEM grids followed by air-drying.

2.3 Simulation

The XRD patterns were simulated with BRASS²⁹ using a simple isotropic size broadening model (Lorentzian) and experimental instrumental broadening parameters, assuming a zero background and 9 nm crystallite size. Instrumental broadening parameters were obtained experimentally with standard reference material 640e from NIST.

The undoped flames were simulated using kinetics^{®30} as one-dimensional stagnation flows coupled with detailed hydrocarbon chemistry described by the USC-Mech II model³¹. The flame standing location was estimated to be 3.5 mm from the stagnation surface. The stagnation surface temperature was taken as 420 K. A more detailed description of the simulation has been given elsewhere³². Constant-volume equilibrium simulations at 1 atm and 150°C were performed using kinetics[®] to estimate the flame adiabatic temperature (summarised in Table 1). It is noted that the flame adiabatic temperature is usually slightly higher than the actual flame temperature as there is convective heat loss to the colder stagnation plate.

3 Results and discussion

3.1 Particle morphology

The as-synthesised particles form agglomerates consisting of nearly spherical primary particles as highlighted in TEM images in Figs. 2(a), (d), and (g). Similar particle shapes and sizes were observed in previous studies^{8,28}. Given the small particle residence time in the flame, the agglomerates are likely formed during particle deposition and TEM sample preparation. The average primary particles diameter, \bar{d}_V , is approximately 9 nm (see supplementary materials, Fig. S1). No significant difference in \bar{d}_V is observed with varying equivalence ratio despite approximately 500 K maximum variation in the adiabatic flame temperature (Table 1). The insensitivity of particle size to maximum flame temperature could be explained by the reduced particle residence time in hotter flames due to an increased convective velocity. Simulated temperature profiles and particle residence times demonstrating the compensating effect are included as supplementary material (Fig. S2).

3.2 Qualitative phase identification

The TiO₂ phases that can be produced with the investigated flames were identified for three representative synthesis conditions of fuel lean ($\phi = 0.50$), stoichiometric ($\phi = 1.00$), and rich ($\phi = 1.67$). Figures 2(b), (e), and (h) show the XRD patterns for these conditions. For the purposes of qualitative comparison, simulated XRD patterns were produced with a simple isotropic size broadening model (Lorentzian) and experimental instrumental

broadening parameters, assuming a zero background and 9 nm crystallites based on the observed primary particle size (Fig. S1). A complete Rietveld refinement of the XRD patterns was not possible due to the complex mixtures of nano-sized crystals. It is suspected that the rapid sample quenching introduced additional peak broadening through micro strain (see below) and possibly some degree of anisotropy in the strain and size induced broadening. In the following discussion, prefixes A, R, B and II denote anatase, rutile, TiO₂-B and TiO₂-II crystal phases, respectively.

In the lean flame ($\phi = 0.50$, Fig. 2(b) and (c)), the major diffraction peaks can be ascribed to anatase (ICSD No. 92363), e.g., A(1 0 1) at 25.3° and A(2 0 0) at 48.1°. The presence of TiO₂-B (ICSD No. 41056) can be identified from the smaller peaks at $2\theta = 27\text{--}34^\circ$, i.e. B(0 0 2), B(1 1 1), B(3 1 0). The simulated XRD pattern with 100:30 intensity ratio of anatase to TiO₂-B correctly predicts all the main peaks observed in the experimental pattern. The simulated 2θ -dependent peak broadening due to crystal size is insufficient to reproduce the broad peaks observed at high angles, e.g., A(2 1 5) and A(2 2 4), suggesting additional peak broadening due to micro strain.

In the stoichiometric flame ($\phi = 1.00$, Fig. 2(e) and (f)), rutile (ICSD No. 16636) formed in addition to anatase, as is evident from the R(1 1 0), R(1 0 1), R(1 1 1), and R(2 1 1) reflections. The presence of a broad shoulder at $2\theta = 31^\circ$ potentially originates from a third phase, such as a small amount of TiO₂-B or TiO₂-II. The qualitative agreement observed between the experimental and simulated XRD patterns confirms that rutile and anatase are the main polymorphs formed in the stoichiometric flame (at approximately 2:1 intensity ratio).

In the rich flame ($\phi = 1.67$, Fig. 2(h) and (i)), a significant reflection at $2\theta = 31.5^\circ$ is observed which is consistent with a II(1 1 1) reflection of TiO₂-II polymorph (ICSD No. 158778). It is noted that the peak at 25.5° can either be ascribed to A(1 0 1) or II(1 1 0) but the lack of the A(2 0 0) reflection at 48° suggests that the latter is the case. In addition, rutile can be identified from the R(1 1 0) peak at 27.5°. Comparison between the simulated and measured XRD pattern indicates slightly broader experimental peaks at low 2θ , indicating that the measured crystals are smaller than the 9 nm assumed for the simulated XRD. The difference in peak broadening increases with 2θ , suggesting the presence of additional micro strain. Furthermore, it can be observed that some peaks such as II(1 1 2) at 44.5° and II(1 1 3) at 62.5° are significantly smaller and/or broader than expected, most likely due to anisotropy in the crystals. It is interesting to note that similar XRD patterns with strong anisotropy in size and strain-induced broadening were observed in rutile and TiO₂-II formed through high-energy milling experiments^{24,25}.

For all three flames, the selected area electron diffraction patterns (SAED) of agglomerated particles (Figs. 2(c), (f), and (i)) are consistent with the power XRD patterns. The presence of TiO₂ phase mixtures on an aggregate scale suggests intimately mixed crystals at particle level. For samples prepared in lean flames, the presence of diffraction spots with approximately 0.63 nm lattice spacing corresponding to B(0 0 1) reflection confirms the presence of TiO₂-B phase (Fig. 2(c)).

Figure 3 presents HRTEM images and the corresponding struc-

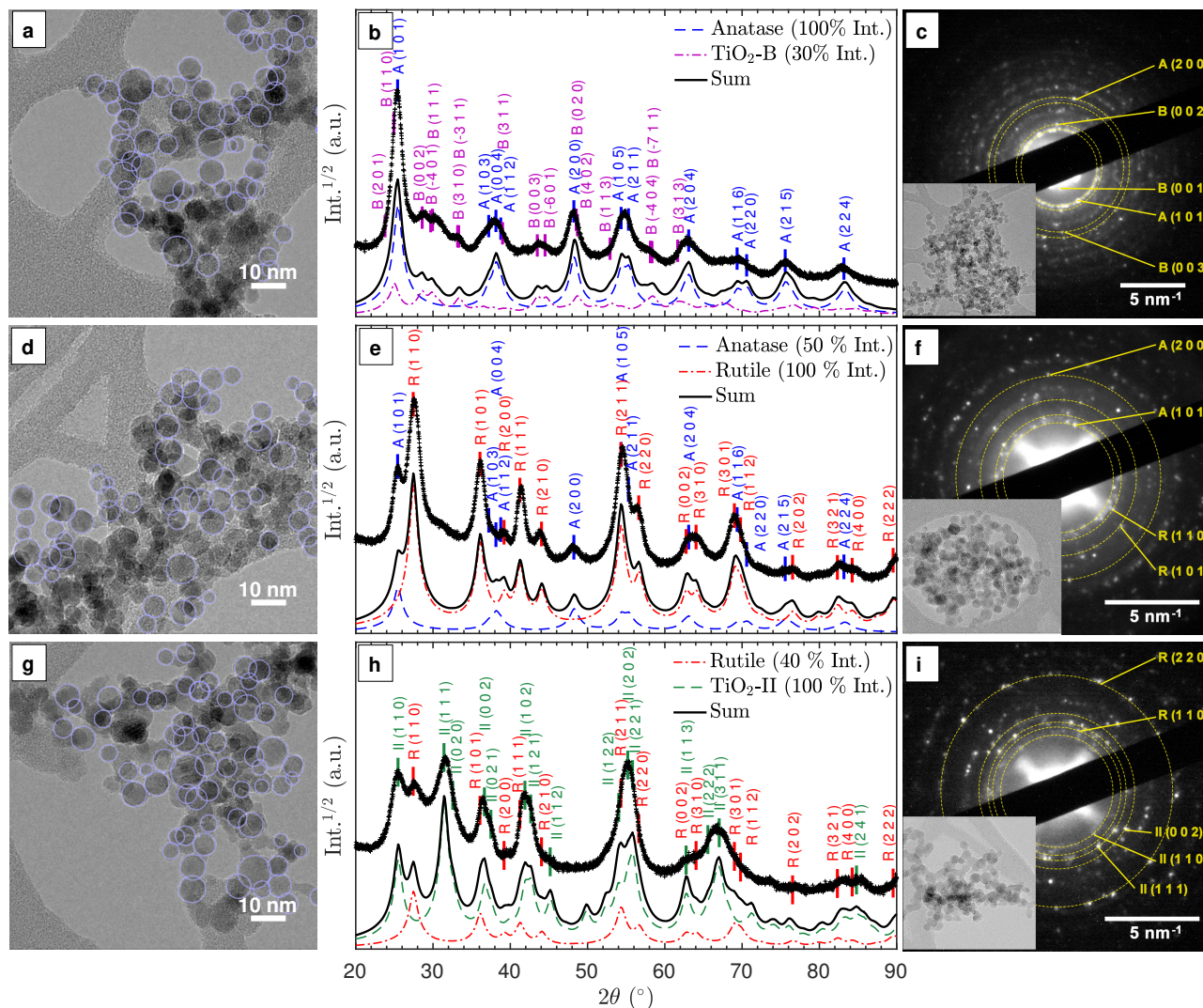


Fig. 2 Characterisation of particles prepared in fuel lean (**top row, a-c**), stoichiometric (**middle row, d-f**), and rich (**bottom row, g-i**) flame conditions. **Left column**: annotated TEM images showing spherical primary particles. **Middle column**: experimental (+) and simulated (lines, see text for details) XRD patterns for qualitative comparison. The locations of the main diffraction peaks for different TiO_2 polymorphs (ICSD catalogue) are annotated and marked with vertical ticks. **Right column**: Selected area electron diffraction (SAED) patterns with labels for the main diffraction spots and the corresponding TEM images as inset.

tural models which further confirm the presence of the anatase, rutile, $\text{TiO}_2\text{-B}$ and $\text{TiO}_2\text{-II}$ phases as discussed previously. The lattice spacings measured from the HRTEM images agree to those from the ICSD data to within 5% accuracy (a reasonable uncertainty expected from TEM³³). In particular, $\text{TiO}_2\text{-B}$ can be readily identified by the large spacing of $B(0\ 0\ 1)$ planes as shown in Fig. 3(b) ($d = 6.32\ \text{\AA}$, ref. $d_{B(0\ 0\ 1)} = 6.24\ \text{\AA}$). In Fig. 3(d), lattice planes corresponding to $\text{II}(1\ 1\ \bar{1})$ ($d = 2.86\ \text{\AA}$, ref. $d_{\text{II}(1\ 1\ \bar{1})} = 2.85\ \text{\AA}$) and $\text{II}(0\ 1\ 0)$ ($d = 5.63\ \text{\AA}$, ref. $d_{\text{II}(0\ 1\ 0)} = 5.50\ \text{\AA}$) are marked. The measured interplanar angle is 60.5° (ref. $\alpha_{\text{II}(1\ 1\ \bar{1})/(0\ 1\ 0)} = 58.8^\circ$).

While Fig. 3 indicates the presence of single crystal primary particles, other TEM images showed stacking faults and possibly even multiple crystals within single primary particles (see Fig. S3). These different crystal domains are especially evident in particles prepared in the fuel rich flame ($\phi = 1.67$), explaining

the anisotropy observed in the powder XRD patterns (Fig. 2(h)). Unfortunately, it was not possible to confidently determine the actual crystal phases, orientations and boundaries or their epitaxial relationships, if any, in a single primary particle.

3.3 Effects of flame equivalence ratio

Additional XRD patterns of samples prepared in fuel lean ($\phi = 0.35\text{--}1.00$) and rich ($\phi = 1.00\text{--}2.50$) flames were measured to elucidate the effect of fuel/oxygen equivalence ratio ϕ on the formed TiO_2 polymorphs (Fig. 4). In the range of $\phi = 0.35\text{--}0.90$, no substantial change is observed despite the significant variations in adiabatic flame temperatures of up to 400 K (Table 1). The particles are predominantly anatase with some amount of $\text{TiO}_2\text{-B}$ as discussed in Section 3.2. Using a rotating stagnation plate, very similar to the one used in this study, Memarzadeh *et al.*⁸ and Liu *et al.*⁹ observed only anatase in lean flames ($\phi = 0.45\text{--}0.9$)

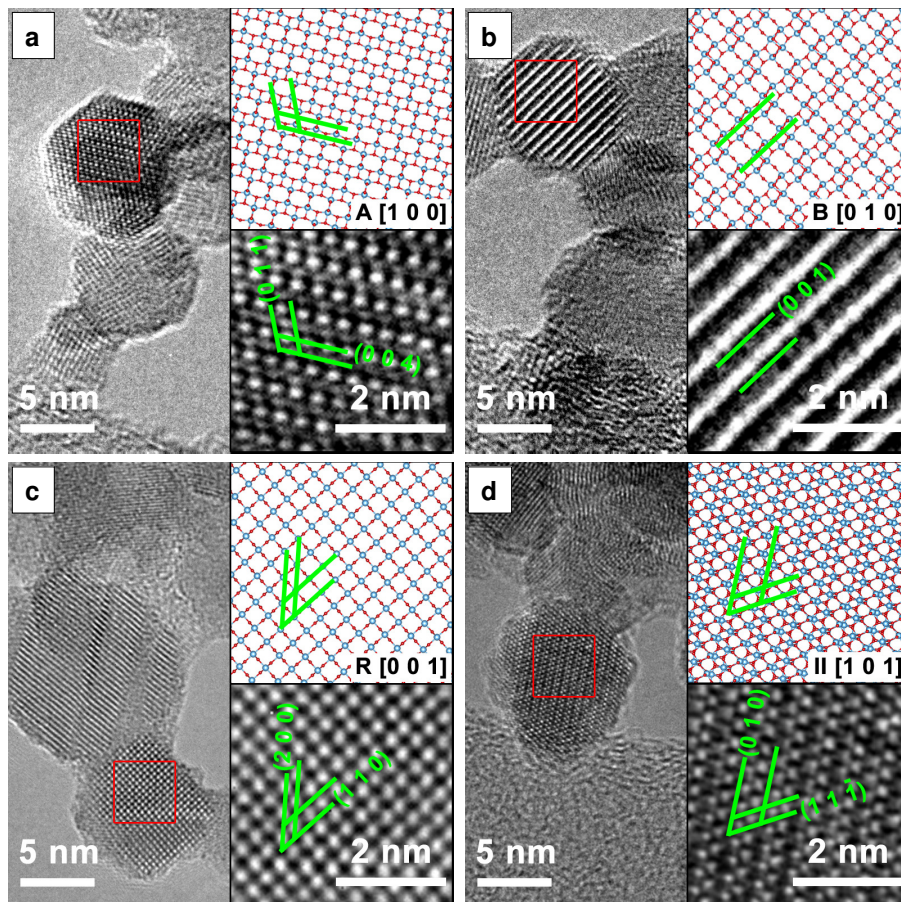


Fig. 3 HRTEM images of the four TiO_2 polymorphs identified at different flame equivalence ratios ϕ : (a) Anatase, $\phi = 0.50$, (b) $\text{TiO}_2\text{-B}$, $\phi = 0.50$, (c) Rutile, $\phi = 1.00$, (d) $\text{TiO}_2\text{-II}$, $\phi = 1.67$. The bottom inset is an enlarge view of the area in the red square. The top inset is a ball-and-stick representation of the particular polymorph with the same orientation as in the HRTEM image (Ti: blue, O: red). The relevant crystal planes are annotated in green.

with a small amount of rutile. McCormick *et al.*¹¹ reported the formation of anatase with minor amount of a metastable phase identified as brookite prepared in a $\phi = 0.36$ flame followed by annealing at 773 K. This discrepancy likely arises from varying stagnation surface temperature in these studies, leading to different quenching rates compared to this work. For example, Riad *et al.*¹⁴ recently reported, for the first time, the formation of the metastable $\text{TiO}_2\text{-B}$ phase (27% as mixture with anatase and amorphous phases) in samples prepared through flame spray pyrolysis (FSP) synthesis. In their study, $\text{TiO}_2\text{-B}$ was preferentially formed in oxygen rich conditions, consistent with the observations made in this work. As increasing oxygen content leads to shorter residence time in the FSP, it is suggested that the short residence time is responsible for the formation of $\text{TiO}_2\text{-B}$.

Near the stoichiometric point ($\phi = 0.90\text{--}1.00$), anatase and rutile are the two main phases observed. The rutile content increases with increasing equivalence ratio as is evident from the $R(1\ 1\ 0)$ peak at 27.5° . An anatase/rutile transition near the stoichiometric point was also observed by Liu *et al.*⁹. The strong sensitivity of the anatase/rutile ratio on the equivalence ratio is further in agreement with the study by Kho *et al.*¹⁰.

As the equivalence ratio is increased further ($\phi = 1.00\text{--}1.30$), the XRD results indicate that the anatase content decreases (i.e.

$A(2\ 0\ 0)$ peak at 48.1°) while $\text{TiO}_2\text{-II}$ is formed. It is noted that the XRD results obtained by Liu *et al.*⁹ at $\phi = 1.15$ and 1.33 also showed a peak at $2\theta = 31.5^\circ$ but it was attributed to the presence of impurity (Ti_3O_5). As discussed previously, it is suggested that this peak originates from the $\text{II}(1\ 1\ 1)$ reflection instead. It should also be noted that Liu *et al.*⁹ assigned the reflection at 25.3° to $A(1\ 0\ 1)$ but that it might also be caused by $\text{II}(1\ 1\ 0)$, which would explain the absence of the $A(2\ 0\ 0)$ reflection in their pattern. The higher intensity of the $2\theta = 31.5^\circ$ peak in the present study is likely caused by differences in the synthesis conditions such as the deposition time, actual gas flow rates, stagnation surface temperature, or burner nozzle diameter.

In the ϕ range of $1.50\text{--}1.67$, the two main phases identified are rutile and $\text{TiO}_2\text{-II}$ with significant amounts of the latter. The as-synthesised powders appeared slightly blue suggesting the presence of lattice oxygen deficiencies³⁴. To the best of our knowledge, our work is the first to report a substantial amount of $\text{TiO}_2\text{-II}$ prepared through flame synthesis. A detailed discussion on the possible formation routes is given below.

For the very fuel rich flame condition ($\phi = 2.00\text{--}2.50$), soot is formed together with TiO_2 causing the obtained powder to be coloured grey-black. Based on the XRD pattern (Fig. 4(b)), rutile and $\text{TiO}_2\text{-II}$ are still present but with higher content of rutile.

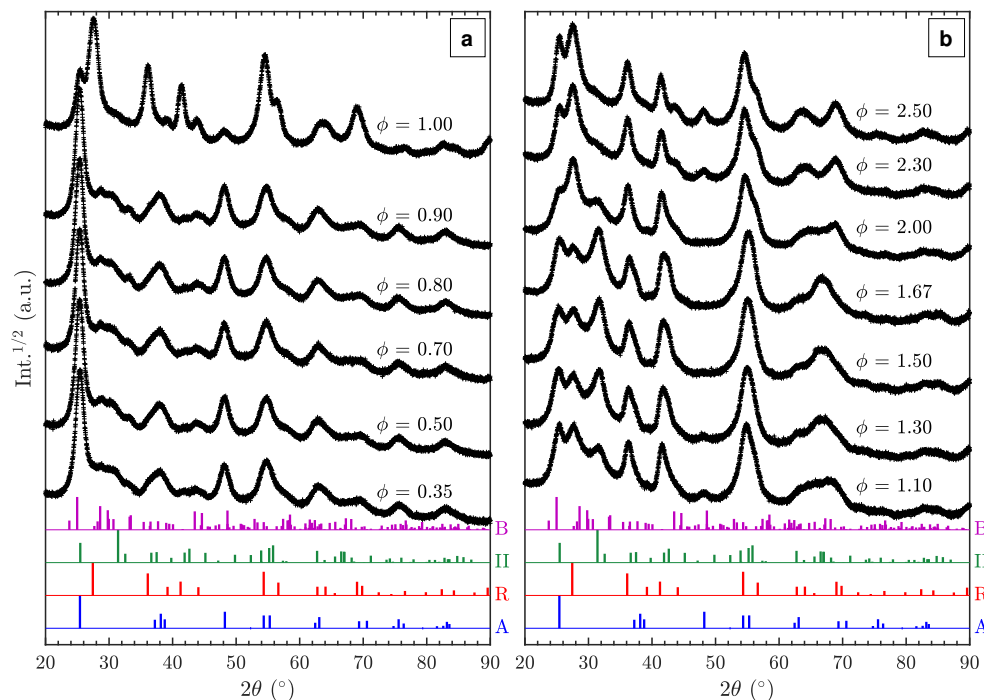


Fig. 4 Powder XRD patterns of particles prepared at varying flame mixture equivalence ratios, ϕ : (a) fuel-lean and (b) fuel-rich flames. Reference XRD patterns for different polymorphs from the ICSD catalogue are given at the bottom (A: Anatase, B: TiO₂-B, R: Rutile, II: TiO₂-II).

Additionally, anatase is formed as the equivalence ratio increases above 2.0 as evidenced by the A(2 0 0) peak at 48.1°.

The Ti 2p XPS spectra of samples from the lean, stoichiometric, and rich flames (Fig. 5(a)) show very similar binding energies and intensities for Ti⁴⁺ 2p_{3/2} and Ti⁴⁺ 2p_{1/2} peaks with a 2p_{3/2}-2p_{1/2} splitting value of 5.8 eV, consistent with reported values for TiO₂³⁵. No detectable Ti³⁺ presence is observed suggesting that the particle surface is completely oxidised regardless of the difference in the oxygen environment (positions of Ti³⁺ binding energies are marked for reference in Fig. 5(a))³⁶. The main O 1s peak around 530.1 eV can be assigned to bulk oxygen in TiO₂ (Fig. 5(b)). The smaller peaks at higher binding energies likely belong to surface oxygens, the acidic OH(s) and the basic TiOH, formed from H₂O chemisorption on the surface³⁷.

3.4 Formation of TiO₂-II polymorph

In the rich flames where TiO₂-II is formed ($\phi = 1.10$ – 2.00), the calculated adiabatic flame temperature is 2400–2500 K (Table 1). At this temperature, incipient particles in the flame are likely to be melt or liquid-like without any long range order³⁸ (melting point of bulk TiO₂ approx. 2100 K). The particles grow in size through surface growth and coalescence until they approach the stagnation surface where they are rapidly cooled and solidify (Fig. S2). The presence of both TiO₂-II and rutile in these samples most likely indicates that one of them formed first and that the other developed through a phase transformation. One possibility is the formation of solid rutile particles followed by a solid-state transformation to TiO₂-II. Another option would be the direct formation of TiO₂-II (or a pre-TiO₂-II intermediate phase) and a subsequent solid-state transformation to rutile. Both scenarios are

considered here and will be discussed below.

Numerous works have documented solid-state transformations of rutile, anatase, or brookite to TiO₂-II but this typically requires high-pressure conditions of up to 5-9 GPa^{39,40}. Such high pressure can be achieved through static pressing, shock wave, or high-energy milling experiments. As the TiO₂-II in the present study formed in an atmospheric pressure flame, a solid-state transformation of rutile to TiO₂-II is considered unlikely.

In order to elucidate the possibility if direct TiO₂-II formation with subsequent phase transformation to rutile, additional XRD patterns (Fig. 6) were recorded of samples collected for different durations on a water-cooled plate (instead of a rotating stagnation plate). Note that the surface temperature of the stationary plate is likely to be higher than of the rotating plate, thus the results are not directly comparable. Nevertheless, the change of phase composition with prolonged deposition time can give valuable information into the origin of the TiO₂ polymorphs. It can be observed in Fig. 6 that the rutile content increases with increasing deposition time and thus prolonged exposure to elevated temperatures. This suggests that TiO₂-II is formed first and that rutile originates from a solid-state phase transformation of the already deposited TiO₂-II particles. Furthermore, the solid-state transformation is consistent with the observed crystal domains within a single primary particle (Fig. S3) and the accompanied crystal anisotropy.

A comparison to other ambient pressure TiO₂-II synthesis routes might help explain the role of the oxygen/fuel equivalence ratio on the TiO₂-II formation and the possible involvement of a pre-TiO₂-II intermediates. Aarik⁴¹ used atomic layer deposition (ALD) to grow TiO₂-II solid films from a TiCl₄ gas-phase precursor

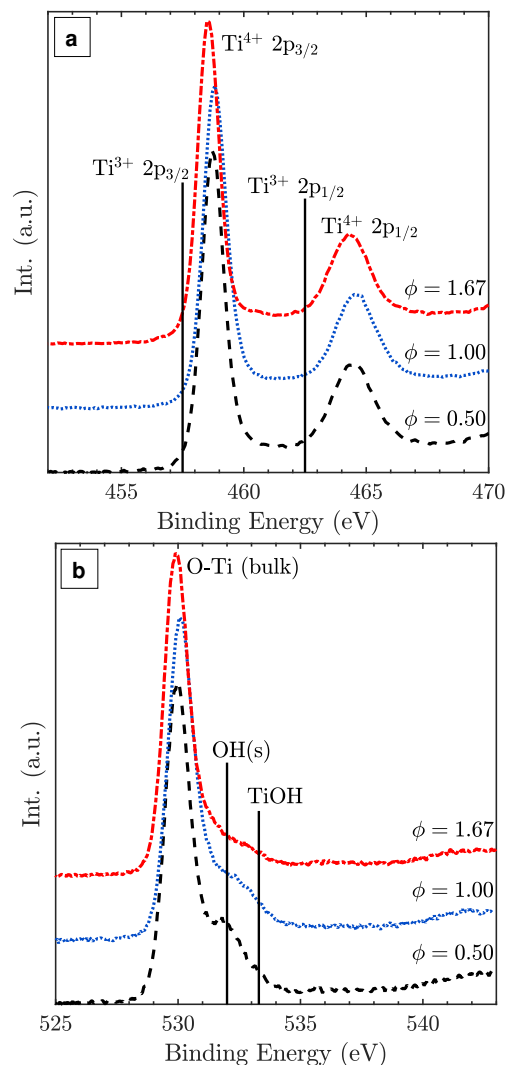


Fig. 5 Ti 2p (a) and O 1s (b) XPS spectra of TiO₂ particles synthesised at lean, stoichiometric, and rich flame conditions with normalised intensities.

sor and water as the sole oxygen source. It was observed that TiO₂-II grows with some preferred orientation in the pure crystalline phase or in a mixture with rutile at low water doses (i.e. oxygen lean environment)⁴², in agreement with our findings for fuel rich (i.e. oxygen lean) flames. A preferred growth orientation for TiO₂-II was also observed by Grey *et al.*⁴³ who reacted TiO₂ sub-oxide (with composition close to Ti₃O₅) with boiling sulphuric acid. They proposed that TiO₂-II was formed through a solid state transformation of an α -Ti₃O₅ due to a small long-range misfit between the atomic arrangements of α (1 1 0) and II(1 0 1) layers. Therefore, the results from Aarik *et al.*⁴² and Grey *et al.*⁴³ demonstrate the importance of a non-stoichiometric surface layer⁴² or solid state transformation from α -Ti₃O₅ sub-oxide in the formation of TiO₂-II crystals. Such sub-oxide species can potentially be formed in the gas phase through clustering of species such as Ti and TiO which have recently been identified as important products in the TTIP decomposition⁴⁴. Similarly, sub-oxide structures such as Ti₃O₅ and Ti₅O₇ have been reported

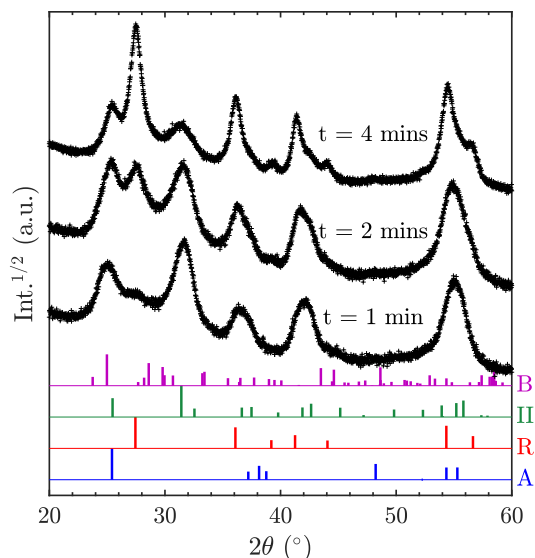


Fig. 6 Powder XRD patterns of particles prepared at equivalence ratio, ϕ , of 1.67 with non-rotating stagnation plate at varying deposition time, t . Reference XRD patterns for different polymorphs from the ICSD catalogue are given at the bottom (A: Anatase, B: TiO₂-B, R: Rutile, II: TiO₂-II).

to form during plasma synthesis of TiO₂ from TiC oxidation⁴⁵. Therefore, it is possible that during flame synthesis, sub-oxide species form directly from Ti and TiO clustering in the fuel rich flames. In the high temperature flame environment, these sub-oxide clusters would continue to grow in a liquid-like state and at the same time be oxidised to form stoichiometric TiO₂. With high cooling rates, it is possible that the sub-oxide clusters solidify prior complete oxidation. In this case, diffusion of lattice oxygen can occur to further oxidise the TiO₂ bulk, kinetically favouring the formation of TiO₂-II over rutile through a similar mechanism to that described by Grey *et al.*⁴³, i.e. solid-state transformation driven by the close structural match between (1 1 0) α -Ti₃O₅ and (1 0 1) TiO₂-II planes.

If sub-oxide species indeed solidified and later oxidised to TiO₂-II through the diffusion of lattice oxygen, some residue of Ti³⁺ could be expected. Such oxygen deficient titania was reported to be blue in colour³⁴, similar to the colour of the particles synthesised here with the fuel rich flames. Notably, the presence of some Ti³⁺ or oxygen vacancies in the particle core does not contradict the absence of a Ti³⁺ peak in the surface sensitive XPS spectra (Fig. 5). Rather, it is assumed that the particles have a completely oxidised surface as confirmed by XPS but some oxygen vacancies or Ti³⁺ exist in the core resulting in the blue coloration of the powder.

Surface modifications could also possibly explain the TiO₂-II formation as they can strongly affect the energetics of nanocrystals^{9,46}. For example, Barnard and Zapol⁴⁷ show that anatase-to-rutile phase transition size is significantly affected by surface passivation. The effect of surface hydration has been demonstrated for Y₂O₃ polymorphic stability where nano-sized particles with a metastable high-pressure polymorph have been prepared in ambient pressure^{48,49}. The XPS data in Fig. 5(b) suggests that there

are some qualitative differences in the shape and intensity of the surface oxygen peaks. However, the interpretation of these peaks is beyond the scope of the present work and will be investigated in future work.

Lastly, the decrease in the relative ratio of TiO₂-II to rutile and the onset of anatase formation in very rich flames ($\phi = 2.00 - 2.50$, Fig. 4(b)) is likely connected to the soot formation at these conditions. The formation of soot is evident from the gray-black coloration of the collected powder and is expected to decrease the flame temperature due to radiative heat loss and might further affect the gas-phase chemistry.

4 Conclusions

Four different TiO₂ polymorphs and their mixtures were prepared with a single synthesis step using a premixed laminar stagnation flame. Metastable phases TiO₂-B and TiO₂-II were identified from diffraction and microscopy analysis. The obtained crystal structure was controlled by varying the fuel/oxygen equivalence ratio, ϕ , where mixtures of anatase/TiO₂-B, anatase/rutile, and rutile/TiO₂-II were formed in fuel-lean, stoichiometric, and fuel-rich conditions, respectively.

Notably, this is the first time that TiO₂-II is reported to form in atmospheric pressure flames even though similar XRD patterns were observed in previous flame studies. The mechanism leading to the formation of rutile/TiO₂-II mixtures in fuel rich (i.e. oxygen lean) flames was elucidated based on the phase composition as function of collection time and previous reports of TiO₂-II formation. It is proposed that rutile is formed through a solid-state transformation of TiO₂-II. The TiO₂-II formation hereby likely involves some titania sub-oxide intermediate that is subsequently oxidised to stoichiometric TiO₂-II. The formation of and transformation between four different TiO₂ polymorphs cannot be explained by the current understanding of TiO₂ phase formation and transformation mechanism, and thus requires re-evaluation of the current working hypotheses.

Conflicts of interest

The authors declare no conflict of interest.

Acknowledgements

This project is supported by the National Research Foundation (NRF), Prime Minister's Office, Singapore under its Campus for Research Excellence and Technological Enterprise (CREATE) programme. The authors wish to thank Dr. Johannes Birkenstock for the helpful discussion on XRD. The authors also thank CMCL Innovations for generous financial support.

Notes and references

- 1 Y. Sheng, M. Kraft and R. Xu, *Curr. Opin. Chem. Eng.*, 2018, **20**, 39–49.
- 2 S. Li, Y. Ren, P. Biswas and S. D. Tse, *Prog. Energy Combust. Sci.*, 2016, **55**, 1–59.
- 3 R. Koirala, S. E. Pratsinis and A. Baiker, *Chem. Soc. Rev.*, 2016, **45**, 3053–3068.
- 4 J. A. H. Dreyer, P. Li, L. Zhang, G. K. Beh, R. Zhang, P. H. L. Sit and W. Y. Teoh, *Appl. Catal., B*, 2017, **219**, 715–726.
- 5 J. A. H. Dreyer, S. Pokhrel, J. Birkenstock, M. G. Hevia, M. Schowalter, A. Rosenauer, A. Urakawa, W. Y. Teoh and L. Mädler, *CrystEngComm*, 2016, **18**, 2046–2056.
- 6 Y. K. Kho, A. Iwase, W. Y. Teoh, L. Mädler, A. Kudo and R. Amal, *J. Phys. Chem. C*, 2010, **114**, 2821–2829.
- 7 F. Pellegrino, L. Pellutié, F. Sordello, C. Minero, E. Ortel, V.-D. Hodoroaba and V. Maurino, *Appl. Catal. B Environ.*, 2017, **216**, 80–87.
- 8 S. Memarzadeh, E. D. Tolmachoff, D. J. Phares and H. Wang, *Proc. Combust. Inst.*, 2011, **33**, 1917–1924.
- 9 C. Liu, J. Camacho and H. Wang, *ChemPhysChem*, 2018, **19**, 180–186.
- 10 Y. K. Kho, W. Y. Teoh, L. Mädler and R. Amal, *Chem. Eng. Sci.*, 2011, **66**, 2409–2416.
- 11 J. R. McCormick, B. Zhao, S. A. Rykov, H. Wang and J. G. Chen, *J. Phys. Chem. B*, 2004, **108**, 17398–17402.
- 12 J. F. Banfield, D. R. Veblen and D. J. Smith, *Am. Mineral.*, 1991, **76**, 343–353.
- 13 R. Marchand, L. Brohan and M. Tournoux, *Mater. Res. Bull.*, 1980, **15**, 1129–1133.
- 14 K. B. Riad, P. M. Wood-Adams and K. Wegner, *Mater. Res. Bull.*, 2018, **106**, 276–281.
- 15 M. Katzer, A. P. Weber and G. Kasper, *J. Aerosol Sci.*, 2001, **32**, 1045–1067.
- 16 D. Lee, S. Yang and M. Choi, *Appl. Phys. Lett.*, 2001, **79**, 2459–2461.
- 17 C. Li, L. Shi, D. Xie and H. Du, *J. Non. Cryst. Solids*, 2006, **352**, 4128–4135.
- 18 H. Zhang and J. F. Banfield, *J. Phys. Chem. B*, 2000, **104**, 3481–3487.
- 19 Q. Mao, Y. Ren, K. H. Luo and S. Li, *J. Phys. Chem. C*, 2015, **119**, 28631–28639.
- 20 Z. G. Mei, Y. Wang, S. L. Shang and Z. K. Liu, *Inorg. Chem.*, 2011, **50**, 6996–7003.
- 21 P. Shen, S.-L. Hwang, H.-T. Chu and T.-F. Yui, *Int. Geol. Rev.*, 2001, **43**, 366–378.
- 22 D. W. Meng, X. L. Wu, F. Sun, L. W. Huang, F. Liu, Y. J. Han, J. P. Zheng, X. Meng and R. Mason, *Micron*, 2008, **39**, 280–286.
- 23 W.-N. Zhao, S.-C. Zhu, Y.-F. Li and Z.-P. Liu, *Chem. Sci.*, 2015, **6**, 3483–3494.
- 24 S. Bégin-Colin, G. Le Caër, A. Mocellin and M. Zandona, *Philos. Mag. Lett.*, 1994, **69**, 1–7.
- 25 H. Dutta, P. Sahu, S. K. Pradhan and M. De, *Mater. Chem. Phys.*, 2003, **77**, 153–164.
- 26 H. Murata, Y. Kataoka, T. Kawamoto, I. Tanaka and T. Taniguchi, *Phys. Status Solidi - Rapid Res. Lett.*, 2014, **8**, 822–826.
- 27 S. Wu, W. Wang, W. Tu, S. Yin, Y. Sheng, M. Y. Manuputty, M. Kraft and R. Xu, *ACS Sustainable Chem. Eng.*, 2018, **Article ASAP**.
- 28 E. D. Tolmachoff, A. D. Abid, D. J. Phares, C. S. Campbell and H. Wang, *Proc. Combust. Inst.*, 2009, **32 II**, 1839–1845.

- 29 J. Birkenstock, R. X. Fischer and T. Messner, *Z. Krist. Suppl.*, 2006, **23**, 237–242.
- 30 CMCL Innovations, *kinetics*[®], 2016, <http://www.cmclinnovations.com/>.
- 31 H. Wang, X. You, A. V. Joshi, S. G. Davis, A. Laskin, F. Egolopoulos and C. K. Law, 2007, http://ignis.usc.edu/USC_Mech_II.htm, Accessed on 12 December 2015.
- 32 M. Y. Manuputty, J. Akroyd, S. Mosbach and M. Kraft, *Combust. Flame*, 2017, **178**, 135–147.
- 33 D. B. Williams and C. B. Carter, *Transmission Electron Microscopy*, Springer, 2009.
- 34 A. Teleki and S. E. Pratsinis, *Phys. Chem. Chem. Phys.*, 2009, **11**, 3742–3747.
- 35 M. C. Biesinger, L. W. M. Lau, A. R. Gerson and R. S. C. Smart, *Appl. Surf. Sci.*, 2010, **257**, 887–898.
- 36 A. F. Carley, P. R. Chalker, J. C. Riviere and M. W. Roberts, *J. Chem. Soc. Faraday Trans. 1 Phys. Chem. Condens. Phases*, 1987, **83**, 351–370.
- 37 T. K. Sham and M. S. Lazarus, *Chem. Phys. Lett.*, 1979, **68**, 426–432.
- 38 O. L. G. Alderman, L. B. Skinner, C. J. Benmore, A. Tamalonis and J. K. R. Weber, *Phys. Rev. B - Condens. Matter Mater. Phys.*, 2014, **90**, 1–13.
- 39 A. C. Withers, E. J. Essene and Y. Zhang, *Contrib. to Mineral. Petrol.*, 2003, **145**, 199–204.
- 40 K. Spektor, D. T. Tran, K. Leinenweber and U. Häussermann, *J. Solid State Chem.*, 2013, **206**, 209–216.
- 41 J. Aarik, *Philos. Mag. Lett.*, 1996, **73**, 115–119.
- 42 J. Aarik, A. Aidla, V. Sammelselg, H. Siimon and T. Uustare, *J. Cryst. Growth*, 1996, **169**, 496–502.
- 43 I. E. Grey, C. Li, I. C. Madsen and G. Braunshausen, *Mater. Res. Bull.*, 1988, **23**, 743–753.
- 44 K. S. Ershov, S. A. Kochubei, V. G. Kiselev and A. V. Baklanov, *J. Phys. Chem. A*, 2018, **124**, 1064–1070.
- 45 T. Ishigaki, Y.-L. Li and E. Kataoka, *J. Am. Ceram. Soc.*, 2003, **86**, 1456–1463.
- 46 A. S. Barnard and H. Xu, *ACS Nano*, 2008, **2**, 2237–2242.
- 47 A. S. Barnard and P. Zapol, *Phys. Rev. B - Condens. Matter Mater. Phys.*, 2004, **70**, 1–13.
- 48 P. Zhang, A. Navrotsky, B. Guo, I. Kennedy, A. N. Clark, C. Leshner and Q. Liu, *J. Phys. Chem. C*, 2008, **112**, 932–938.
- 49 J.-G. Li and T. Ishigaki, *J. Solid State Chem.*, 2012, **196**, 58–62.

Supplementary Material (SM) for:

Polymorphism of nanocrystalline TiO₂ prepared in a stagnation flame:
Formation of TiO₂-II phase

Manoel Y. Manuputty^{a,b}, Jochen A. H. Dreyer^{a,b}, Yuan Sheng^{b,c}, Eric J. Bringley^a, Maria L. Botero^{b,d},
Jethro Akroyd^{a,b}, Markus Kraft^{a,b,c,*}

^a*Department of Chemical Engineering and Biotechnology, University of Cambridge, West Site, Philippa Fawcett Drive,
Cambridge, CB3 0AS, United Kingdom*

^b*Cambridge Centre for Advanced Research and Education in Singapore (CARES), CREATE Tower, 1 Create Way, 138602,
Singapore*

^c*School of Chemical and Biomedical Engineering, Nanyang Technological University, 62 Nanyang Drive, 637459, Singapore*

^d*Department of Mechanical Engineering, National University of Singapore, 9 Engineering Drive 1, 117575, Singapore*

*Corresponding author

Email address: mk306@cam.ac.uk (Markus Kraft)

1. Particle size and morphology

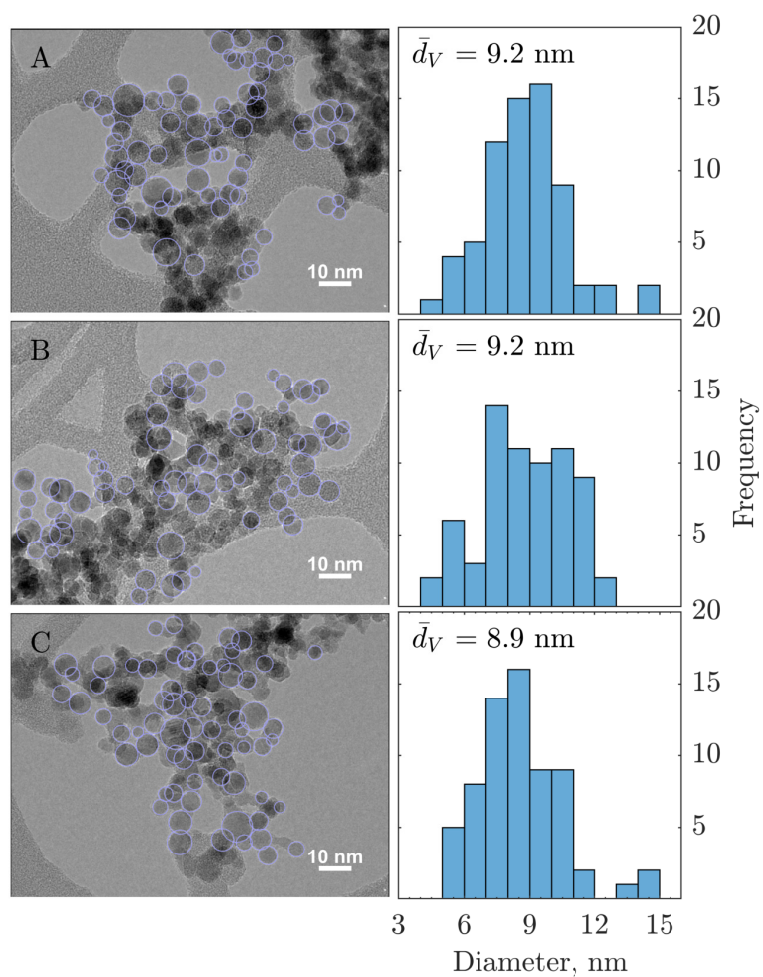
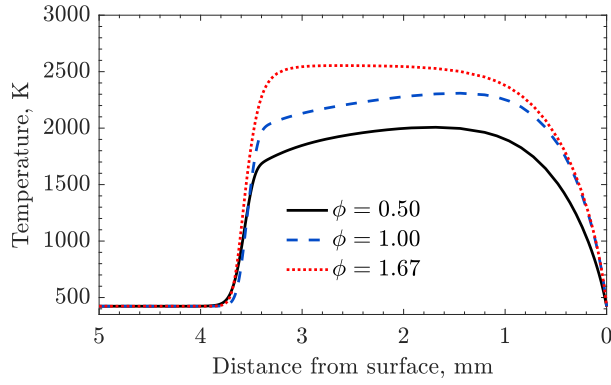
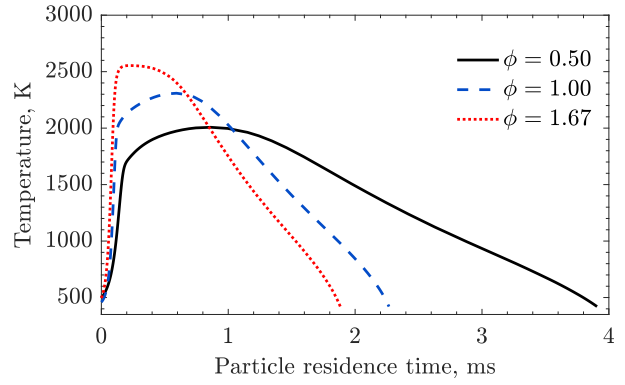


Figure S1: Annotated TEM images (left panel) of particles prepared in lean (A, $\phi = 0.50$), stoichiometric (B, $\phi = 1.00$), and rich (C, $\phi = 1.67$) flames. Particles size histograms (right panel) and the volume averaged particle size, \bar{d}_V , are from manual measurements of approximately 70 spherical primary particles on each TEM image; standard deviation, SD = 2.0 nm (A), 2.0 nm (B), 2.2 nm (C).

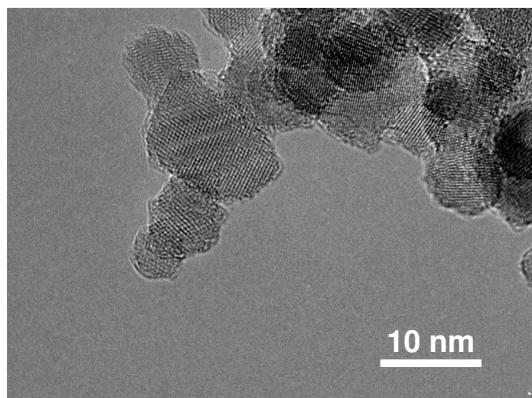


(a) Temperature profiles

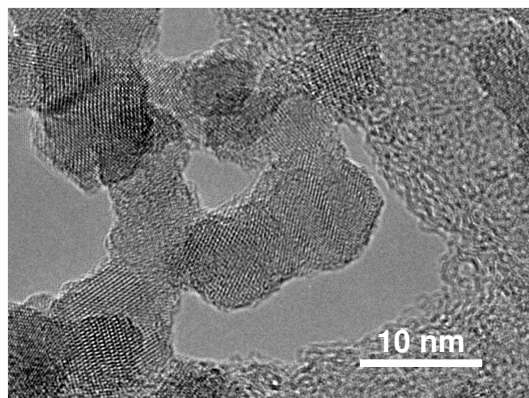


(b) Temperature-time profiles

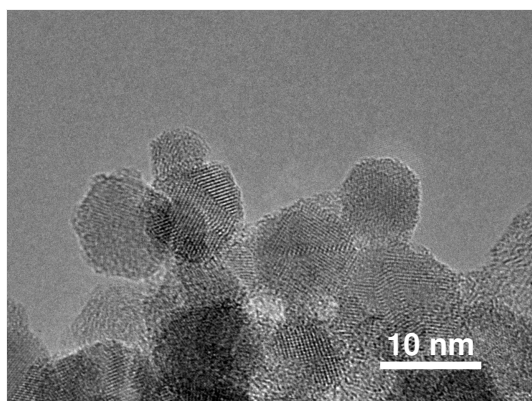
Figure S2: Simulated particle temperature and residence time profiles in undoped lean ($\phi = 0.50$), stoichiometric ($\phi = 1.00$), and rich ($\phi = 1.67$) flames. Particles are assumed to be formed at $T \approx 500$ K ($t_{\text{res}} = 0$). The residence time is calculated from convective and thermophoretic velocity experienced by particles. The profiles demonstrate that the particle residence time decreases as the flame temperature increases. This is expected as higher temperature leads to more gas expansion and subsequently higher convective velocity. This compensating effect explains the close particle sizes observed in Fig. S1



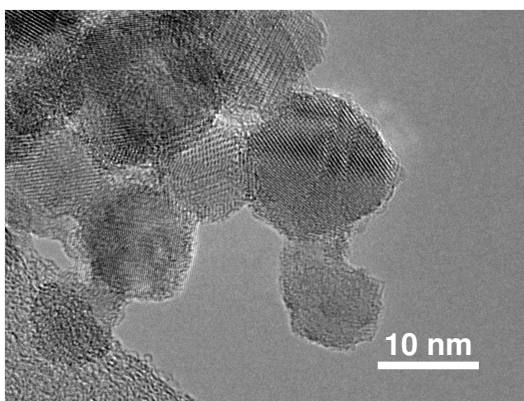
(a)



(b)



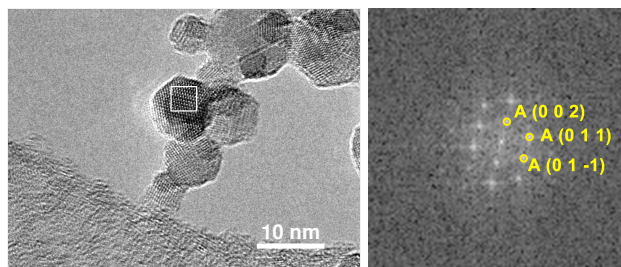
(c)



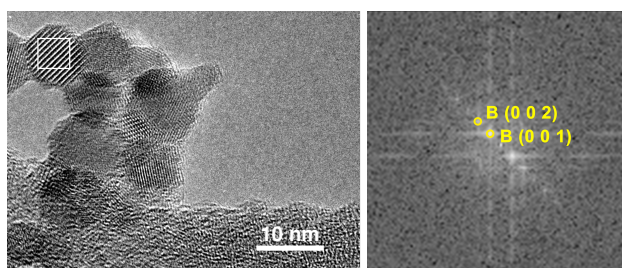
(d)

Figure S3: HRTEM images showing primary particles with possibly multiple crystal domains (not indexed) prepared in flames with equivalence ratio, ϕ , of 1.67 (a, b) and 1.00 (c, d).

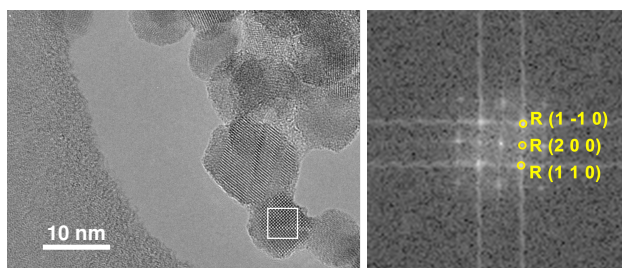
2. FFT analysis of HRTEM images



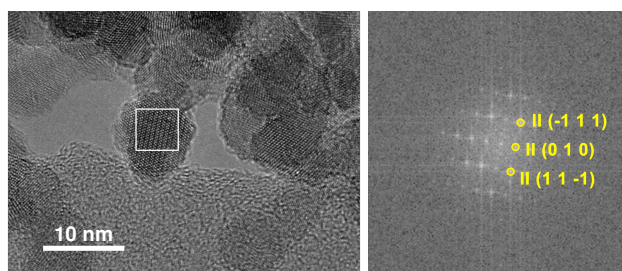
(a) Anatase ($\phi = 0.50$)



(b) TiO₂-B ($\phi = 0.50$)



(c) Rutile ($\phi = 1.00$)



(d) TiO₂-II ($\phi = 1.67$)

Figure S4: HRTEM images (left) and the corresponding annotated FFT spectra (right). The summary of FFT analysis is given in Table S2.

Table S1: Lattice spacing, d , and the interplanar angles (relative to the first plane), α , obtained from FFT analysis of HRTEM images shown in Fig. S4. The reference data are taken from ICSD catalogue (see text for details on catalogue number for each phase).

Image	Measured (FFT)		Reference (ICSD)		
	d , Å	Relative α , °	Lattice plane	d , Å	Relative α , °
S4(a)	3.67	0	A (0 1 $\bar{1}$)	3.50	0
	3.56	44.5	A (0 1 1)	3.50	43.6
	4.82	113.6	A (0 0 2)	4.72	111.8
S4(b)	6.32	0	B (0 0 1)	6.24	0
	3.15	0.4	B (0 0 2)	3.12	0
S4(c)	3.38	0	R (1 1 0)	3.25	0
	2.35	43.5	R (2 0 0)	2.30	45
	3.34	92.4	R (1 $\bar{1}$ 0)	3.25	90
S4(d)	2.86	0	II (1 1 $\bar{1}$)	2.85	0
	5.63	60.5	II (0 1 0)	5.50	58.8
	2.87	117.9	II ($\bar{1}$ 1 1)	2.85	117.7

3. XPS C 1s fitting

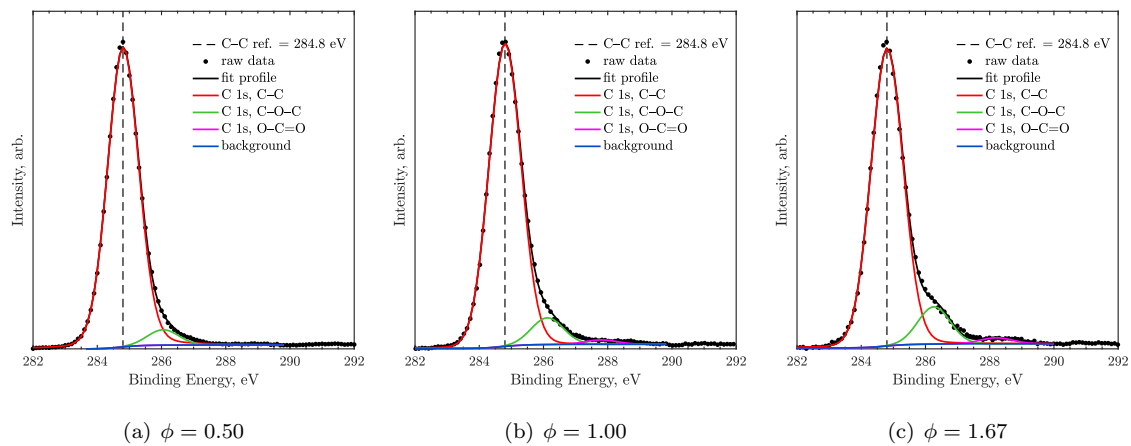


Figure S5: C 1s XPS spectra and fitted peaks of samples prepared in lean, stoichiometric, and rich flames.

Table S2: C-1s binding energies from XPS spectra deconvolution for internal calibration (C-C binding energy set at 284.8 eV). The spectra are fitted with constraints of 1) equal FWHM, and 2) 100% Gaussian shape for C-O-C and O-C=O peaks.

ϕ	Binding energy, eV			χ^2
	C-C	C-O-C	O-C=O	
0.50	284.8	286.1	-	3.65
1.00	284.8	286.1	287.8	5.29
1.67	284.8	286.3	288.2	4.81