

Engineering Conferences International ECI Digital Archives

Composites at Lake Louise (CALL 2015)

Proceedings

Fall 11-9-2015

Supramolecular peptide composite assemblies: Mimicking biological form and function in synthetic systems

Erik Spoerke

Sandia National Laboratories, edspoer@sandia.gov

Brad Jones

Sandia National Laboratories

Jill Wheeler

Sandia National Laboratories

Alina Martinez

Sandia National Laboratories

Christina Ting

Sandia National Laboratories

See next page for additional authors

Follow this and additional works at: http://dc.engconfintl.org/composites_all

 Part of the [Materials Science and Engineering Commons](#)

Recommended Citation

1. G.D. Bachand, et al., (2015) *Biotechnology and Bioengineering*. 112 (6) 1065-1073. 2. B.H. Jones, et al. (2015) *Soft Matter*. 11 3572-3580. 3. D. V. Gough, et al. (2014) *Langmuir*. 30 (30) 9201-9209

This Conference Proceeding is brought to you for free and open access by the Proceedings at ECI Digital Archives. It has been accepted for inclusion in Composites at Lake Louise (CALL 2015) by an authorized administrator of ECI Digital Archives. For more information, please contact franco@bepress.com.

Authors

Erik Spoerke, Brad Jones, Jill Wheeler, Alina Martinez, Christina Ting, and Mark Stevens

Supramolecular Peptide Composite Assemblies: Mimicking Biological Form and Function in Synthetic Systems

Erik D. Spoeke, Sandia National Laboratories
PO Box 5800 MS 1411, Albuquerque, NM USA
T: 1 (505) 284-1932, edspoer@sandia.gov

Brad Jones, Jill S. Wheeler, Alina Martinez, Christina Ting, and Mark Stevens
Sandia National Laboratories, Albuquerque, NM USA

Microtubules (MTs) are dynamic, multifunctional biomaterials that facilitate a range of complex biological process in cells ranging from regulation of cell morphology to separation of chromosomes during cell division to directing the intracellular transport of molecular cargo.¹ The remarkable precision, versatility, and dynamic nature of these non-equilibrium structures has motivated our desire to mimic their structure and function in synthetic materials. Here, I will identify a number of the key attributes responsible for MT form and function, and describe our efforts to merge computation and experiment to design, synthesize, and study a family of self-assembling peptides intended to mimic MTs.

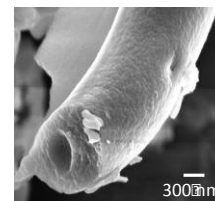
MTs are self-assembled biological filaments assembled from tightly bound heterodimers of α and β tubulin. These dimers assemble head-to-tail into protofilaments that associate laterally into closed sheets forming the characteristic tubular morphology of the MTs. These tubules are approximately 25 nm in diameter and can be many micrometers long, though the length of the MTs is subject to their dynamic assembly and disassembly within a cell (dynamic instability). Ultimately, both the initial assembly and dynamic instability of MTs are governed by complex electrostatic and hydrogen bonding interactions between tubulin heterodimers and other functional biomolecules within the cell. These interactions allow biology to effectively program MT form and function to meet the dynamic and evolving needs of a cell.

From a synthetic materials perspective, we aim to create simplified peptide or composite peptide molecules capable of similar programmable functional assembly that could similarly be used to facilitate dynamic or adaptable organization of nanomaterials. To guide the design and facilitate understanding of these peptide systems, we utilize a combination of density functional theory (DFT) and self-consistent field theory (SCFT) that can reveal simplified or distilled molecular characteristics needed in an artificial MT scheme. These computational studies have provided insight into the necessary molecular geometries, peptide compositions, and even targeted intermolecular interactions built into our MT-mimetic designs. In particular here, I will describe a collection of simulation-inspired peptides in which we demonstrate that molecular shape, electrostatic interactions, hydrogen bonding, and solvent interactions influence peptide self assembly into sheets, fibers, ribbons, vesicles and tubules (Figure 1).^{2,3} Moreover, we show that by creating hybrid or composite compositions containing multiple functionalities, it is possible to control molecular self-assembly through interactions with secondary molecules. For example, select bola-peptide compositions are shown to undergo unique self-assembly in collaboration with the surfactant sodium dodecylsulfate, creating a composite structure that is resistant to enzymatic degradation. In another example, molecules comprising self assembling peptides, such as diphenylalanine, and boronic acid form ribbon-structures whose reversible self-assembly is mediated by binding of polysaccharides to the boronic acids. Just as in the natural MT system, the self-assembly (and disassembly) in these hybrid systems is regulated by molecular shape, electrostatic and hydrogen bonding interactions, and the programmable response of these molecules to chemical stimuli.

Continued development of these hybrid, composite peptide systems is aimed at developing a new class of biomimetic molecular materials which mimic not only the form, but also the underlying function of some of Nature's most compelling supramolecular creations.



Figure 1. (Above) DFT-simulated wedge monomer capable of assembly into tubular morphology. (Right) SEM self-assembled tube formed from SCFT-inspired triblock polymer-peptide composite.



1. G.D. Bachand, *et al.*, (2015) *Biotechnology and Bioengineering*. **112** (6) 1065-1073.
2. B.H. Jones, *et al.* (2015) *Soft Matter*. **11** 3572-3580.
3. D. V. Gough, *et al.* (2014) *Langmuir*. **30** (30) 9201-9209.

Sandia National Laboratories is a multi program laboratory managed and operated by Sandia Corporation, a wholly owned subsidiary of Lockheed Martin Corporation, for the U.S. Department of Energy's National Nuclear Security Administration under contract DE-AC04-94AL85000.