

# UNIVERSITY OF BIRMINGHAM

Research at Birmingham

## Proteome-wide analysis of CD8+ T cell responses to EBV reveals differences between primary and persistent infection

Forrest, Calum; Hislop, Andrew; Rickinson, Alan; Zuo, Jianmin

DOI:

[10.1371/journal.ppat.1007110](https://doi.org/10.1371/journal.ppat.1007110)

License:

Creative Commons: Attribution (CC BY)

*Document Version*

Publisher's PDF, also known as Version of record

*Citation for published version (Harvard):*

Forrest, C, Hislop, AD, Rickinson, AB & Zuo, J 2018, 'Proteome-wide analysis of CD8+ T cell responses to EBV reveals differences between primary and persistent infection', PLoS pathogens, vol. 14, no. 9, e1007110.  
<https://doi.org/10.1371/journal.ppat.1007110>

[Link to publication on Research at Birmingham portal](#)

### General rights

Unless a licence is specified above, all rights (including copyright and moral rights) in this document are retained by the authors and/or the copyright holders. The express permission of the copyright holder must be obtained for any use of this material other than for purposes permitted by law.

- Users may freely distribute the URL that is used to identify this publication.
- Users may download and/or print one copy of the publication from the University of Birmingham research portal for the purpose of private study or non-commercial research.
- User may use extracts from the document in line with the concept of 'fair dealing' under the Copyright, Designs and Patents Act 1988 (?)
- Users may not further distribute the material nor use it for the purposes of commercial gain.

Where a licence is displayed above, please note the terms and conditions of the licence govern your use of this document.

When citing, please reference the published version.

### Take down policy

While the University of Birmingham exercises care and attention in making items available there are rare occasions when an item has been uploaded in error or has been deemed to be commercially or otherwise sensitive.

If you believe that this is the case for this document, please contact [UBIRA@lists.bham.ac.uk](mailto:UBIRA@lists.bham.ac.uk) providing details and we will remove access to the work immediately and investigate.

RESEARCH ARTICLE

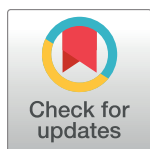
# Proteome-wide analysis of CD8+ T cell responses to EBV reveals differences between primary and persistent infection

Calum Forrest , Andrew D. Hislop <sup>†</sup>, Alan B. Rickinson, Jianmin Zuo <sup>\*</sup>

Institute for Immunology and Immunotherapy, College of Medical and Dental Sciences, University of Birmingham, Birmingham, United Kingdom

<sup>†</sup> Current address: Therapeutic Goods Administration, Woden, Australia

\* [j.zuo@bham.ac.uk](mailto:j.zuo@bham.ac.uk)



 OPEN ACCESS

**Citation:** Forrest C, Hislop AD, Rickinson AB, Zuo J (2018) Proteome-wide analysis of CD8+ T cell responses to EBV reveals differences between primary and persistent infection. *PLoS Pathog* 14(9): e1007110. <https://doi.org/10.1371/journal.ppat.1007110>

**Editor:** Christian Munz, University of Zurich, SWITZERLAND

**Received:** May 16, 2018

**Accepted:** August 27, 2018

**Published:** September 24, 2018

**Copyright:** © 2018 Forrest et al. This is an open access article distributed under the terms of the [Creative Commons Attribution License](https://creativecommons.org/licenses/by/4.0/), which permits unrestricted use, distribution, and reproduction in any medium, provided the original author and source are credited.

**Data Availability Statement:** All relevant data are within the paper and its Supporting Information files.

**Funding:** This research was supported by Medical Research Council UK (<https://mrc.ukri.org/>) Programme funding to Alan Rickinson and Paul Moss. (G.0.9.01755). The funders had no role in study design, data collection and analysis, decision to publish, or preparation of the manuscript.

**Competing interests:** The authors have declared that no competing interests exist.

## Abstract

Human herpesviruses are antigenically rich agents that induce strong CD8+T cell responses in primary infection yet persist for life, continually challenging T cell memory through recurrent lytic replication and potentially influencing the spectrum of antigen-specific responses. Here we describe the first lytic proteome-wide analysis of CD8+ T cell responses to a gamma1-herpesvirus, Epstein-Barr virus (EBV), and the first such proteome-wide analysis of primary versus memory CD8+ T cell responses to any human herpesvirus. Primary effector preparations were generated directly from activated CD8+ T cells in the blood of infectious mononucleosis (IM) patients by in vitro mitogenic expansion. For memory preparations, EBV-specific cells in the blood of long-term virus carriers were first re-stimulated in vitro by autologous dendritic cells loaded with a lysate of lytically-infected cells, then expanded as for IM cells. Preparations from 7 donors of each type were screened against each of 70 EBV lytic cycle proteins in combination with the donor's individual HLA class I alleles. Multiple reactivities against immediate early (IE), early (E) and late (L) lytic cycle proteins, including many hitherto unrecognised targets, were detected in both contexts. Interestingly however, the two donor cohorts showed a different balance between IE, E and L reactivities. Primary responses targeted IE and a small group of E proteins preferentially, seemingly in line with their better presentation on the infected cell surface before later-expressed viral evasins take full hold. By contrast, target choice equilibrates in virus carriage with responses to key IE and E antigens still present but with responses to a select subset of L proteins now often prominent. We infer that, for EBV at least, long-term virus carriage with its low level virus replication and lytic antigen release is associated with a re-shaping of the virus-specific response.

## Author summary

Herpesviruses are carried by most people as lifelong asymptomatic infections but become life-threatening in immunocompromised individuals. This reflects the crucial role of T cells, especially CD8+ killer T cells, in controlling these agents. EBV is arguably the most

pathogenic of the human herpesviruses, with primary infection producing a severe flu-like illness called infectious mononucleosis, and persistent infection being causally linked to a range of EBV-associated cancers. Identifying which viral proteins induce the strongest T cell responses is seen as crucial both to vaccine design and to the development of immune therapies for EBV-associated diseases. We report the first comprehensive analysis of CD8+ T cell responses to the full range of 70 EBV proteins expressed in the virus-replicative (lytic) cycle. We find that, in many people, responses tend to focus on the same small subset of these 70 proteins; the immediate early and particular early proteins are dominant targets in primary infection, but with virus persistence the choice broadens to include key late cycle antigens. This is the first complete picture of EBV-induced CD8+ T cell responses and the first indication for any human herpesvirus that chronic virus replication during long-term carriage can re-shape virus-specific T cell surveillance.

## Introduction

Human herpesviruses are ancient pathogens that have co-evolved with our species and its antecedents over millions of years, producing a finely balanced virus-host relationship in which both primary infection and subsequent life-long virus carriage are typically asymptomatic. By contrast, herpesvirus infections can be life-threatening in individuals with congenital or iatrogenic impairment of the T cell system, illustrating the central importance of cell-mediated immune responses in achieving an equable virus-host balance [1]. Our limited understanding of those responses reflects the antigenic complexity of these large DNA viruses with, depending on the agent, 60 to >150 proteins being expressed during the virus replicative (lytic) cycle. While all of these proteins are potentially immunogenic, they include viral evasins which partially shield infected cells from T cell (especially cytotoxic CD8+ T cell) recognition and whose effects upon the immunogenicity of lytic cycle proteins remain unclear [2]. Determining the range of responses that are induced and identifying those that best mediate host control are seen as key to the development both of prophylactic vaccines against primary infection and of immune therapies targeting chronic infection.

Concerted efforts towards a virus proteome-wide mapping of T cell targets have so far been made for herpes simplex (HSV, an alpha-herpesvirus) using a viral gene expression library [3] and human cytomegalovirus (HCMV, a beta-herpesvirus) using a synthetic peptide library [4]. In each case mapping revealed a range of CD8+ T cell targets straddling the immediate early (IE), early (E) and late (L) temporal phases of the virus lytic cycle, with little evidence that early-expressed evasins limited late protein immunogenicity. Note, however, that the above studies were focussed on responses seen in long-term virus carriage rather than during initial infection, reflecting the difficulty of identifying subclinical primary infections with these agents. As a result, the relationship between target antigen choice in primary versus memory responses, and by inference the possible influence of virus persistence on target choice, remains to be determined. Here we describe studies on Epstein-Barr virus (EBV), an oncogenic gamma1-herpesvirus, whose spectrum of lytic antigen-induced CD8+ T cell responses has never been rigorously analysed. Importantly with this virus, proteome-wide screening can be conducted both on long-term virus carriers and on individuals in whom primary infection is clinically manifest as infectious mononucleosis (IM).

Previous studies, largely based on IM patients, have shown that EBV is orally transmitted and replicates through lytic infections in the oropharynx, probably involving mucosal epithelium and some locally-infected B cells, leading to high levels of infectious virus being released

in the throat [5]. At the same time, the virus spreads within the generalised B cell system through a growth-transforming infection, transiently expressing a spectrum of 8–10 latent cycle antigens. Thereafter, antigen expression appears to be suppressed and the virus is then carried for life as a truly latent (i.e. antigen-null) infection in the recirculating B cell pool [6]. Occasionally individual cells within this pool will reactivate into lytic cycle, and some of those reactivations are thought to re-seed foci of oropharyngeal replication, thereby giving rise to the low levels of infectious virus intermittently detectable in the throat washings of virus carriers [7].

How such lytic and latent infections are perceived by the host T cell system has long been of interest to immunologists, prompted initially by the observation that IM blood contains large expansions of activated CD8+ T cells. Much of this acute primary response appears to be EBV-specific and predominantly focused on lytic antigen targets [8, 9]. Thus we have described examples of particular IM patients where a significant fraction (in extreme cases up to 50%) of the activated CD8+ T cell population is attributable to responses against 1–3 individual EBV peptide epitopes, with smaller responses to other epitopes also detectable [10, 11]. The immunodominant epitopes are usually but not exclusively derived from lytic rather than latent cycle proteins, and in the best studied examples on restriction elements such as HLA-A\*0201 and B\*0801 those responses mapped to IE or certain E proteins with little evidence of L-specific reactivities [9, 11, 12]. Having defined the relevant peptide epitopes, HLA-peptide tetramers allow one to follow the evolution of specific responses into memory over the ensuing weeks/month. Such studies show that, as the acute disease resolves, the responding cells lose activation markers and are culled in number but, at least in the short term, retain their hierarchy of representation within the circulating CD8+ T cell pool [13]. Moreover, when healthy virus carriers with the same HLA alleles were studied by tetramer staining or epitope peptide stimulation *ex vivo*, the same reactivities were observed often with a similar hierarchy of inter-epitope representation [14]. There were occasional examples where particular reactivities disappeared over time post-IM [13], but overall the results implied that the range of memory responses to EBV lytic cycle antigens and their hierarchy of immunodominance was essentially determined during primary infection.

However the above studies were limited in their scope, mapping responses through a narrow range of HLA alleles against just a subset of lytic cycle antigens, namely the two IE proteins, 11 of 32 E proteins and 10 of 36 L proteins [12]. Whether the apparent IE > E > L hierarchy of immunodominance among lytic cycle proteins as CD8+ T cell targets would withstand more complete analysis remained an open question. Interestingly two subsequent studies of CD8+ T cell memory, in macaques carrying the analogous rhesus gamma1-herpesvirus [15] and in healthy EBV carriers [15, 16], focussed on selected L antigen targets and detected occasional strong responses, though whether such responses were equally represented at the time of primary infection was unresolved. The present work, using a proteome-wide approach to study lytic antigen-induced CD8+ T cell responses, provides the first comprehensive survey of EBV antigen choice both in acute IM patients and in long-term carriers, and describes significant differences in that choice between the two phases of infection.

## Results

### EBV lytic gene expression library

To provide a lytic proteome-wide panel of target antigens, we cloned a complete library of the known EBV lytic genes in expression vectors linked to *his* tag (six histidine residues at C-terminus) or *GFP* sequence tags. [S1 Table](#) shows the list of lytic genes studied, their temporal phase within the lytic cycle, and the size and (where known) the function of the relevant

protein product. Overall the library encompassed 70 genes encoding 2 IE, 32 E and 36 L proteins. Note that two genes, BNLF2a and BNRF1, were expressed as N- and C-terminal-coding fragments, so that there were 72 constructs in all. In each case expression of the tagged protein was confirmed by immunoblotting (for *his*-tagged constructs) or by FACS analysis (for *GFP*-tagged constructs) of transiently transfected cells.

### T cell responses in IM patients

We used the above library to identify lytic antigen targets for the primary CD8+ T cell response to EBV in 7 acute IM patients who were serologically confirmed to be undergoing primary EBV infection. Table 1 shows the HLA-class I types of those 7 patients; collectively, they cover a range of 6 HLA-A alleles, 9 HLA-B alleles and 6 HLA-C alleles. Each of these alleles was individually cloned in expression vectors. Fig 1 illustrates the screening protocol used in the case of IM donors. The peripheral blood mononuclear cell (PBMC) population in IM is dominated by activated CD8+ T cells and, as in earlier work [12, 13], we directly expanded these activated cells by mitogen stimulation in IL2-conditioned medium. After 14 days CD4+ T cells were depleted, providing a polyclonal CD8+ effector population that could be used both for immediate testing and for cryostorage/re-testing. These effectors were screened on an EBV-negative antigen-presenting background, the MJS (Mel JuSol) melanoma-derived cell line [17], into which each of the 72 lytic gene constructs (and a GFP-tagged vector control) were individually introduced in combination with the donor's two HLA-A allele or HLA-B allele or HLA-C allele constructs. Positive T cell recognition of an individual EBV antigen restricted through an HLA-A or-B or-C allele was detected by IFN $\gamma$  release and capture on a multi-well ELISA plate.

Fig 2 shows results from the initial screening of one such acute patient, IM84. Targets are arranged vertically in blocs of IE, E and L proteins as in S1 Table and, for each target, the levels of response through HLA-A, B and C alleles are shown in different colours. Positive responses were identified as those where IFN $\gamma$  release was 1.7-fold or more over background (i.e. that

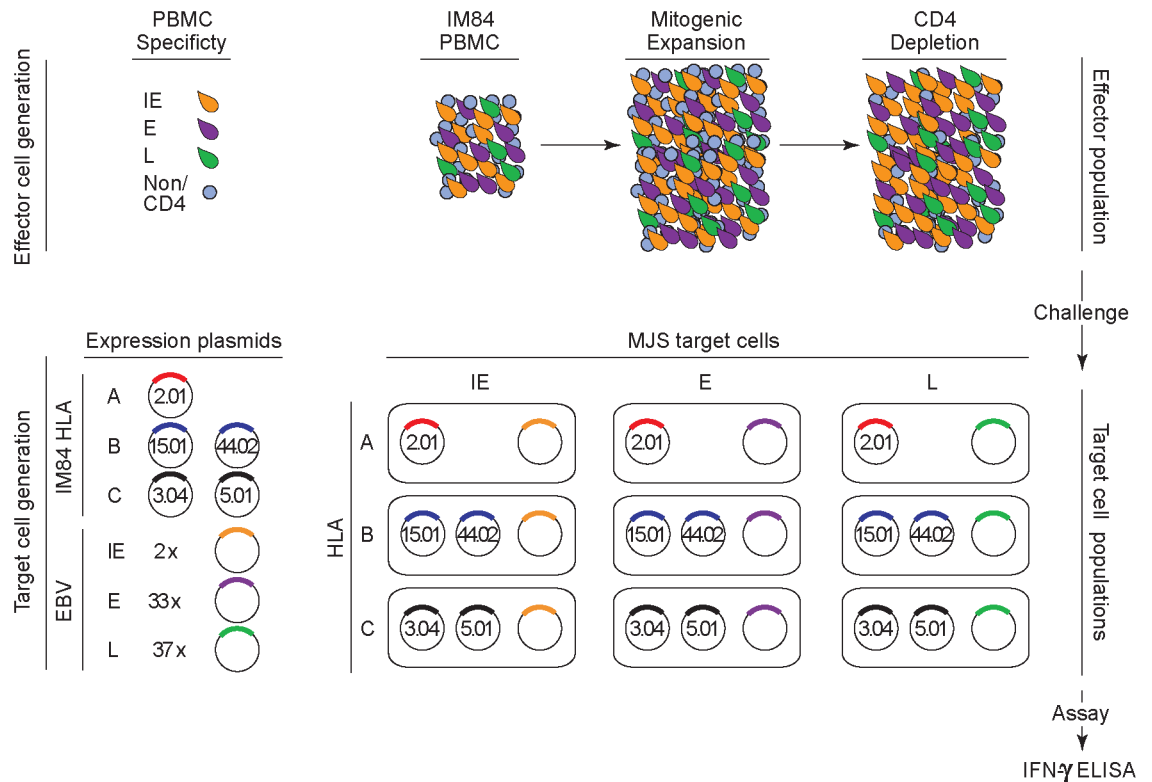
**Table 1. HLA-A, B, C type of IM and HC donors.**

ID	HLA-A alleles		HLA-B alleles		HLA-C alleles	
IM84	02.01	-	15.01	44.02	03.04	05.01
IM217	01.01	03.01	07.02	08.01	07.01	07.02
IM223	02.01	24.02	08.01	40.01	03.04	07.01
IM239	01.01	02.01	08.01	51.01	07.01	-
IM243	01.01	23.01	08.01	44.03	04.01	07.01
IM249	01.01	02.01	08.01	55.01	03.03	07.01
IM269*	03.01	11.01	15.01	35.01	03.03	04.01
HC1	02.01	11.01	35.01	44.02	04.01	05.01
HC2	03.01	11.01	15.01	35.01	03.03	04.01
HC3	01.01	11.01	07.02	35.01	04.01	07.02
HC4	01.01	02.01	39.01	40.01	03.01	12.01
HC5	02.01	24.02	39.01	-	06.02	07.02
HC6	01.01	02.01	44.02	57.03	05.01	07.01
HC7*	03.01	11.01	15.01	35.01	03.03	04.01

HLA nomenclature in accordance with the IPD-IMGT/HLA database. Absence of an allele in homozygous individuals is represented by a dash.

\* IM269\* was studied in acute IM and 4 years later as HC7\*; note that another donor, HC2, happened to have the same HLA type as IM269/HC7 but the two individuals were not familially related.

<https://doi.org/10.1371/journal.ppat.1007110.t001>

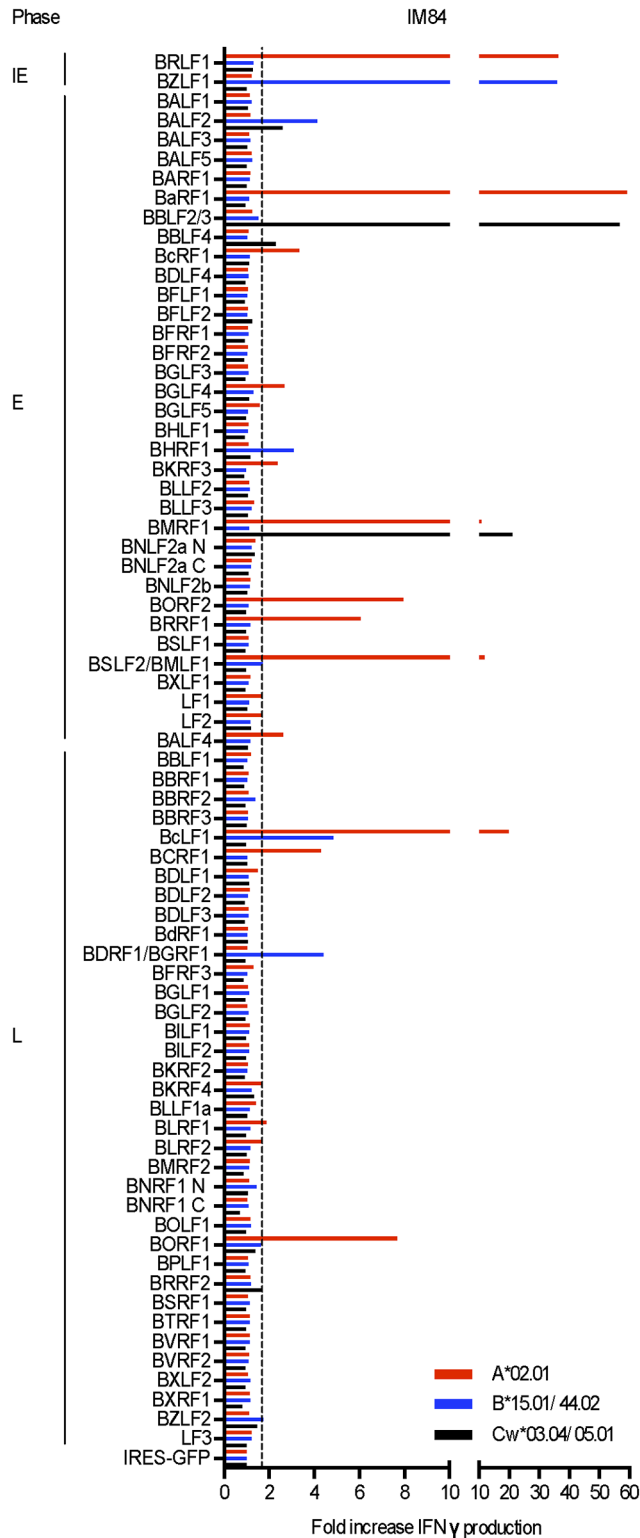


**Fig 1. Schematic of the experimental design for proteome-wide screening of the primary CD8+ T cell response to EBV lytic cycle antigens in IM patients.** The blood picture in acute IM is dominated by activated CD8+ T cells, the majority of which are EBV-specific and mostly directed against lytic cycle antigens; such cells are represented as activated lymphoblasts with IE (yellow), E (purple) or L (green) antigen specificity. Non-activated lymphocytes, including CD4+ T cells, are shown in blue. The activated cell population is preferentially expanded in vitro for two weeks in mitogen/IL2-containing medium, then depleted of any residual CD4+ T cells before testing as an effector population. Target cell populations, seeded in a multi-well format, are MJS cells transiently transfected with constructs expressing the IM donor's two HLA-A alleles, two HLA-B alleles or two HLA-C alleles in combination with one of the 2 IE, 33 E or 37 L lytic gene constructs (or with a control construct); note that IM84 (HLA-A\*0201, A\*0201, B\*1501, B\*4402, C\*0304, C\*0501) is used as an example in the diagram. HLA-A, B or C-restricted recognition of a particular lytic gene construct is detected by IFN $\gamma$  release as measured by ELISA.

<https://doi.org/10.1371/journal.ppat.1007110.g001>

seen against cells co-transfected with the relevant HLA alleles and the GFP control construct) both in the initial screen and in repeat assays. By these criteria, the IM 84 effector population contained detectable responses to 25 individual antigen/HLA-A, B or C combinations, with a target antigen range that included 2/2 IE proteins, 12/32 E proteins and 7/36 L proteins. Based on levels of IFN $\gamma$  release, the most prominent responses were seen against the two IE proteins (BZLF1, BRLF1), four E proteins (BaRF1, BBLF2/3, BMLF1, BMRF1) and one L protein (BcLF1). IM84 had been chosen for analysis because this was the one individual from our earlier studies from whom cryopreserved acute phase cells were still available. In that earlier work, based on T cell cloning and testing on a limited number of targets, only one reactivity (against BMRF1) had been detected in IM84 [12]. The sheer range of reactivities identified in the present work bears witness to the value of proteome-wide screening and emphasises the multiclonal nature of the virus-induced response.

Detailed results from the other 6 IM patients are presented in S1 Fig using the same format. The data again reveal the breadth of the primary response, with the number of distinct reactivities per individual patient being 15 (for IM217), 42 (for IM223), 5 (for IM239), 10 (for IM243),



**Fig 2. Results from proteome-wide screening of the primary CD8+ T cell response in IM 84 (HLA-A,B,C type as shown).** The EBV lytic cycle targets are aligned vertically in blocs of IE, E and L antigens and responses are shown as fold-increases in IFN $\gamma$  production over the IRES-GFP control vector background; the dotted line indicates the cut-off identifying a positive response. For each target antigen, HLA-A, B- and C-restricted responses are shown separately as red (HLA-A), blue (HLA-B) and black (HLA-C) lines. Note that, as conducted, these assays provide a conservative

estimate of the range of responses since each positively-recognised antigen/HLA-A, -B or -C combination is counted as a single response, ignoring the possibility that both HLA-A, -B or -C alleles may be mediating responses to the same antigen.

<https://doi.org/10.1371/journal.ppat.1007110.g002>

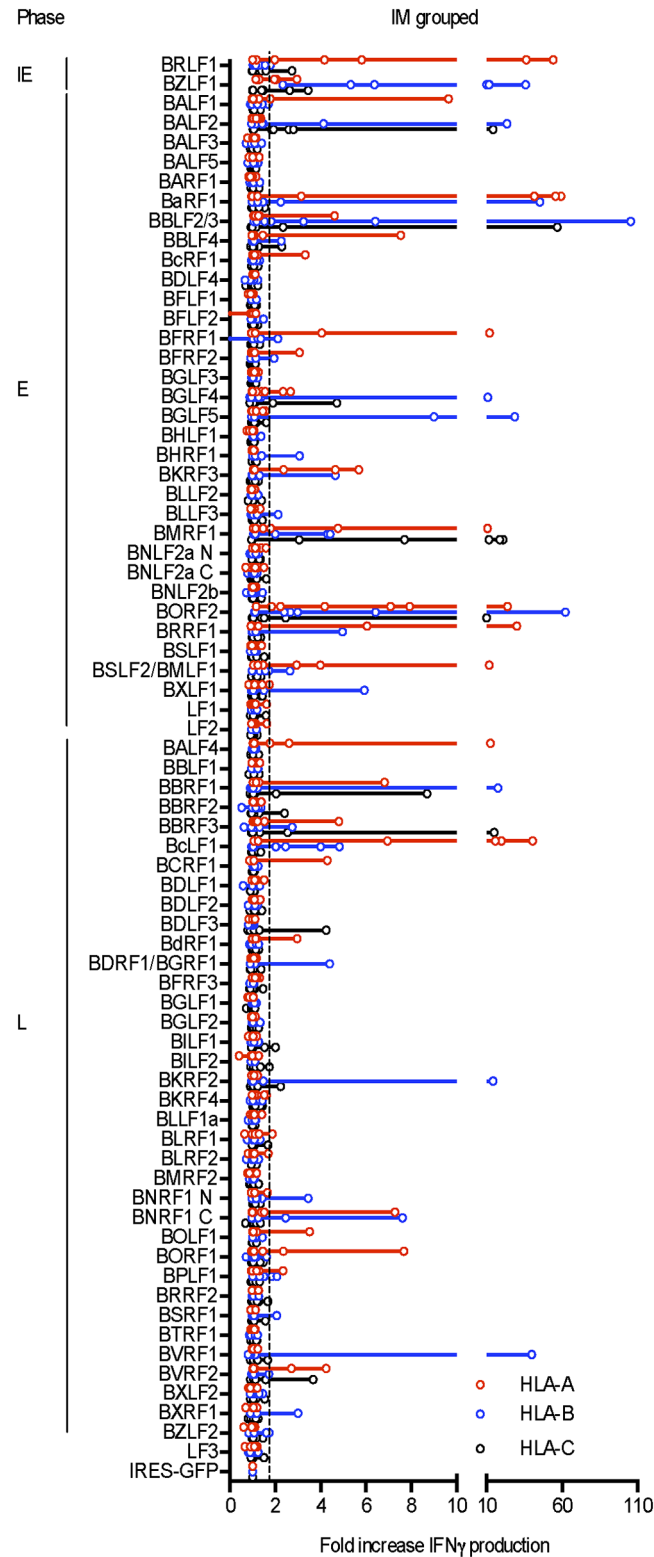
35 (for IM249) and 14 (for IM 269). Fig 3 combines these individual results and provides an overview of the data from all 7 IM patients; where more than one subject responds to the same antigen/HLA A, B or C combination, the individual responses are marked by circles on the relevant line. Based on the observed levels of IFN $\gamma$  release, primary responses appear principally focused on the IE transcriptional activators, BZLF1 and BRLF1. Additionally certain E antigens were targeted by several individuals including responses against the ribonucleotide reductase subunits BORF2 and BaRF1, the major ssDNA-binding protein BALF2, the primase factor BBLF2/3 and the transcriptional activator/DNA polymerase processivity factor BMRF1; most of the above represent newly identified E antigen targets. L antigen-specific responses were less common by comparison but were clearly present in 6 of the 7 patients studied. Most of these L antigen-specific responses were relatively weak and, on the occasions where they were stronger, the target antigen tended to be seen by just one individual patient; interestingly, the best example of an L antigen being well recognised in more than one case involved the major viral capsid protein BcLF1. Collectively, the 7 IM patients mounted 21 responses against the two IE proteins, 80 responses targeting 18 of the 32 E proteins, and 45 responses targeting 22 of the 36 L proteins. Overall, therefore, the proteome-wide screening of the primary CD8 + T cell response in IM revealed a much richer picture than that hitherto reported, with many new antigen-specific reactivities detected (see later S3 Table); however, the same phase-dependent hierarchy of immunodominance among lytic cycle proteins observed in previous more limited studies (IE > E > L) [12] was still apparent.

### T cell responses in healthy virus carriers

We then sought to use the same proteome-wide screening to analyse lytic antigen-specific CD8+ T cell memory in long-term virus carriers. This required a means of reactivating memory responses in vitro both efficiently and in a way that captured IE, E and L responses equally well. We reasoned that the conventional approach, stimulating PBMCs with the autologous EBV-transformed B lymphoblastoid cell line (LCL), had two disadvantages in that regard. Firstly, even in the most permissive LCLs, only a small fraction of cells enter lytic cycle; secondly, even where lytically-infected cells are present, EBV's array of immune evasins expressed as early or late phase proteins [18–24] increasingly retard the presentation of later-expressed antigens on the LCL cell surface. We therefore adopted an alternative protocol, adapted from studies in the HSV system [3], which avoids the phase-specific effects of evasins and renders all lytic cycle antigens potentially available for HLA I-mediated epitope display through cross-presentation in monocyte-derived dendritic cells.

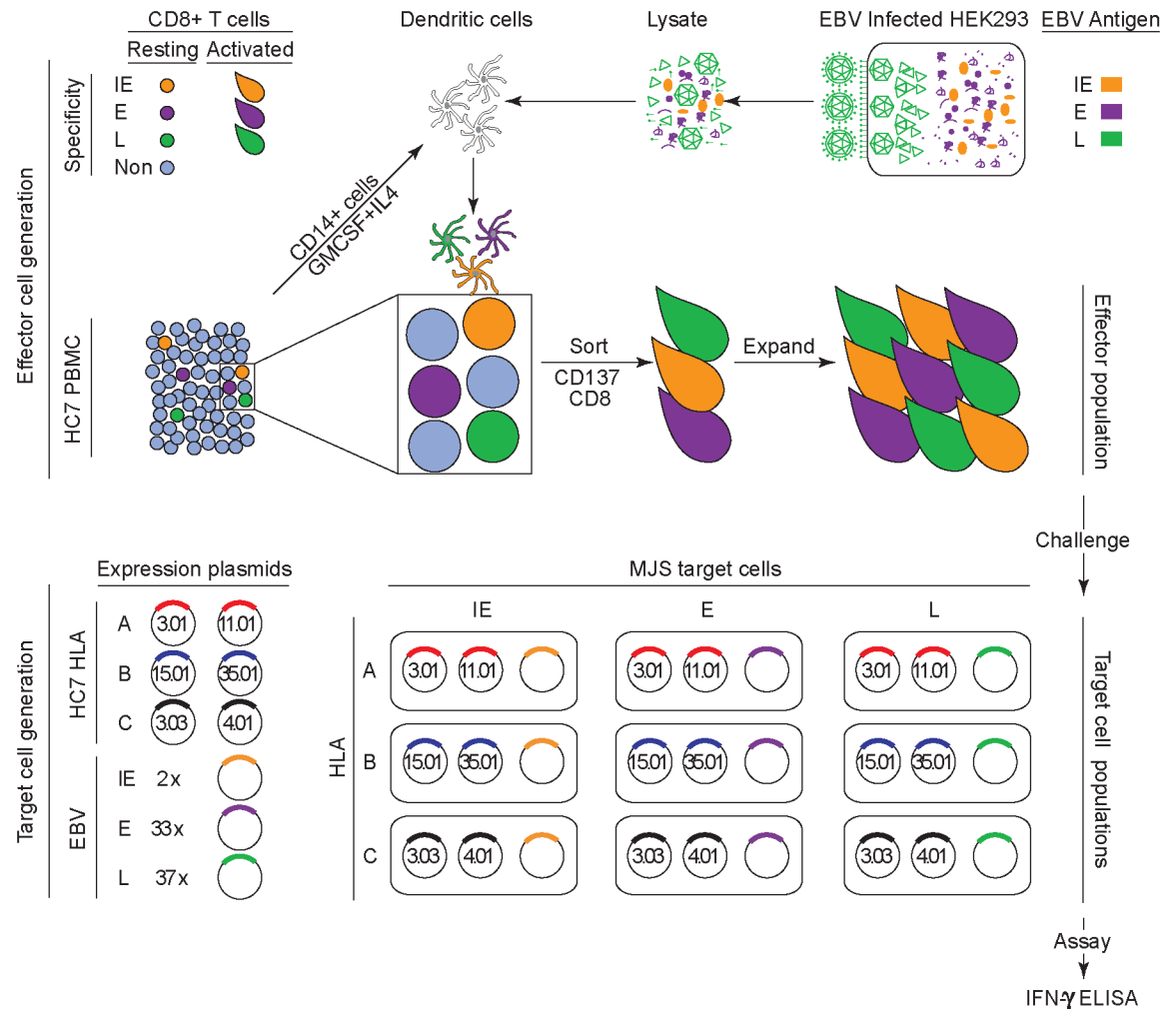
The experimental protocol is illustrated in Fig 4. From each healthy carrier studied, dendritic cells were prepared by IL4/GM-CSF-stimulation of CD14+ monocytes as described [3]. These cells were then exposed for 16–20 hrs to a lysate of the HEK293 epithelial cell line carrying the recombinant EBV strain B95.8 genome [25], made 48 hrs after triggering the latter's induction into lytic cycle, a time judged to be optimal to capture the full gamut of lytic cycle proteins [26]. The antigen-loaded dendritic cell preparation was then co-cultured with autologous lymphocytes and, as described [3], antigen-stimulated memory cells recognised through cell surface up-regulation of the CD137 activation marker. Co-cultures were harvested on day 3 and, following cell surface staining for all three markers, the CD3+, CD8+, CD137+ T cell





**Fig 3. Combined results from proteome-wide screening of the primary CD8+ T cell responses in all 7 IM patients studied.** Data are presented as in Fig 2, with individual IM patients' results identified as open circles on each line.

<https://doi.org/10.1371/journal.ppat.1007110.g003>

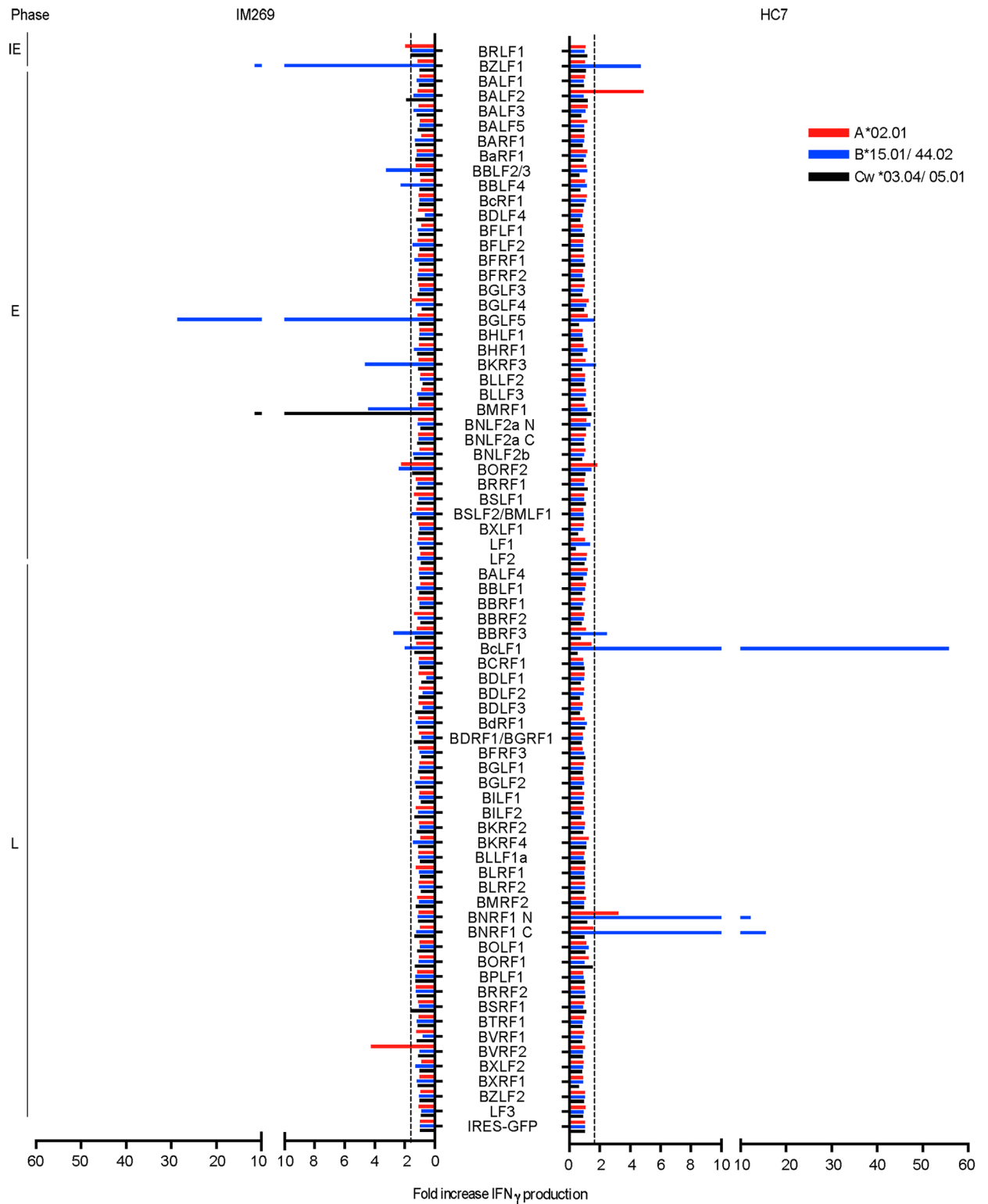


**Fig 4. Schematic of the experimental design for proteome-wide screening of the memory CD8+ T cell response to EBV lytic cycle antigens in healthy virus carriers.** EBV-specific CD8+ memory T cells in the blood of healthy carriers constitute a small fraction of the resting lymphocyte pool and require selective re-activation before expansion in vitro. To achieve this, dendritic cells are first prepared from the healthy carrier by GMCSF/IL4 treatment of CD14+ blood monocytes and then exposed to an IE, E and L antigen-containing lysate made from EBV lytically-infected HEK293 cells. Lysate-loaded dendritic cells displaying cross-presented lytic antigens are then co-cultured with PBMCs of the healthy carrier, leading to re-activation of the EBV lytic antigen-specific memory population. After 3 days, CD8+ T cells now expressing the CD137 activation marker are then selected by CD3+,CD8+,CD137+ fluorescent sorting. Thereafter the sorted cells are expanded in vitro for two weeks in mitogen/IL2-containing medium (as used for IM cell expansion) and tested as an effector population. Testing is carried out on transiently transfected MJS cells using the relevant HLA/lytic gene combinations as described in Fig 1; note that HC7 (HLA-A\*0301, A\*1101, B\*1501, B\*3501, C\*0303, C\*0401) is used as an example in the diagram.

<https://doi.org/10.1371/journal.ppat.1007110.g004>

fraction was sorted by FACS and then expanded for 2 weeks in mitogen/IL2-conditioned medium just as had been used to expand the IM effectors. The resultant effector population was then screened on the entire EBV lytic antigen panel using the same combinations of antigen/self HLA-A, B and C alleles and multi-well readout as in the IM work above.

As a first step, we took advantage of the fact that one of the IM patients studied (IM269) was available for sampling four years later, long after resolution of primary infection (HC7, post-IM269). Fig 5 presents the results of target antigen mapping at this time point alongside that from the original acute IM bleed. While the acute IM results had shown the typical focus



**Fig 5. Results from proteome-wide screening of the primary and memory CD8+ T cell responses in a single individual.** Donor IM 269 was screened in the acute phase of IM and, 4 years later, as donor HC7; the individual's HLA-A,B,C type is as shown. Data are presented as in Fig 2.

<https://doi.org/10.1371/journal.ppat.1007110.g005>

on IE and E targets, the overall picture 4 years later had a different emphasis. Several of the original reactivities (for example to the IE antigen BZLF1 and to the E antigens BGLF5, BKRF3 and BORF2) had been retained but were generally less prominent, while, as noted in earlier work [13], other E antigen responses had fallen below the level of detectability post-IM. By contrast, an initially weak response to the L antigen (BcLF1) had become the most prominent and had been joined by strong responses to another L antigen BNRF1.

In all we studied 7 healthy long-term virus carriers in this way. They are listed in Table 1 along with their HLA I types; collectively they cover a range of 5 HLA-A alleles, 7 HLA-B alleles and 8 HLA-C alleles, many of which were also present in the IM patient panel. Again, each of these alleles was individually cloned in expression vectors as above to allow definitive restriction of responses. Fig 6 shows the results from one such healthy carrier, HC1. The overall picture is broadly similar to that seen for HC7 above; in this case 15 responses to individual antigen/HLA-A, -B or -C combinations were detected and targets were distributed across the IE, E and L antigen spectrum. Thus prominent responses to the IE antigens BRLF1 and BZLF1 and to four E antigens (BaRF1, BMRF1, BORF2 and SM) were accompanied by equally prominent responses to four L antigens (BBRF3, BcLF1, BDLF1 and BNRF1). In the case of HC1, subsequent mapping of these responses to individual HLA alleles (as described later) identified five of the above IE or E antigen-specific responses where the major peptide epitope presented by these alleles was already known, namely the A\*0201-restricted epitopes YVL (from BRLF1), LLI (from BaRF1), TLD (from BMRF1), and GLC (from BSLF2/BMLF1) and the B\*3501-restricted epitope EPL (from BZLF1). This allowed us to conduct an internal control experiment, comparing antigen-specific responses detected in the above *in vitro*-expanded HC1 effectors with the relevant epitope-specific responses detectable by IFN $\gamma$ -based Elispot assay in donor HC1 PBMCs *ex vivo*. The results, recorded in S2 Table, show that the size order of the *ex vivo* peptide responses (EPL>LLI>YVL>GLC>TLD) had indeed been retained in the *in vitro*-expanded effectors (BZLF1>BaRF1>BRLF1>BSLF2/BMLF1>BMRF1). As additional comparators, the Elispot assays also included two known epitope peptides from antigens not recognised by *in vitro*-expanded HC1 effectors, the A\*0201-restricted epitope FLD (from BALF4) and the B\*3501-restricted epitope IPH (from BLLF3); accordingly, we found that HC1 had no detectable memory to these epitopes in the *ex vivo* assay. These findings suggest that overall the *in vitro* reactivation/expansion protocol gives a fair representation of the content of virus-specific memory.

Detailed results from proteome-wide screening of *in vitro*-expanded memory preparations from the other 5 healthy carriers are shown in Supplementary Fig 2, with the number of responses seen per donor against individual antigen/HLA-A, B or C allele combinations ranging from 19 (in HC2), 25 (in HC3), 9 (in HC4) and 16 (in HC6) down to just a single response reproducibly observed in HC5. In each case the overall distribution of target antigen choice looked different from that typically seen in IM. Fig 7 presents the combined results from all 7 healthy carriers, expressed using the same format as for the IM summary data shown earlier. This illustrates the distinct character of the memory response. While the two IE proteins and certain early proteins such as BALF2, BaRF1, BMRF1 and BORF2 remain frequently preferred targets, L antigen-specific reactivities are now prominent components of the memory response with particular target antigens, notably BBRF3, BcLF1, BDLF1 and BNRF1, often more prominent than IE and E targets. Collectively the healthy carriers mounted 8 responses against the 2 IE proteins, 37 responses targeting just 14 of the 32 E proteins, and 51 responses targeting 15 of the 36 L proteins. This distribution, with > 50% of detected healthy carrier responses against L antigen targets, is clearly different from that seen in IM where only 30% responses were so directed. The contrast is even more marked when one compares the relative prominence of the IE, E and L responses in the two situations. As shown in Fig 8, while individual responses

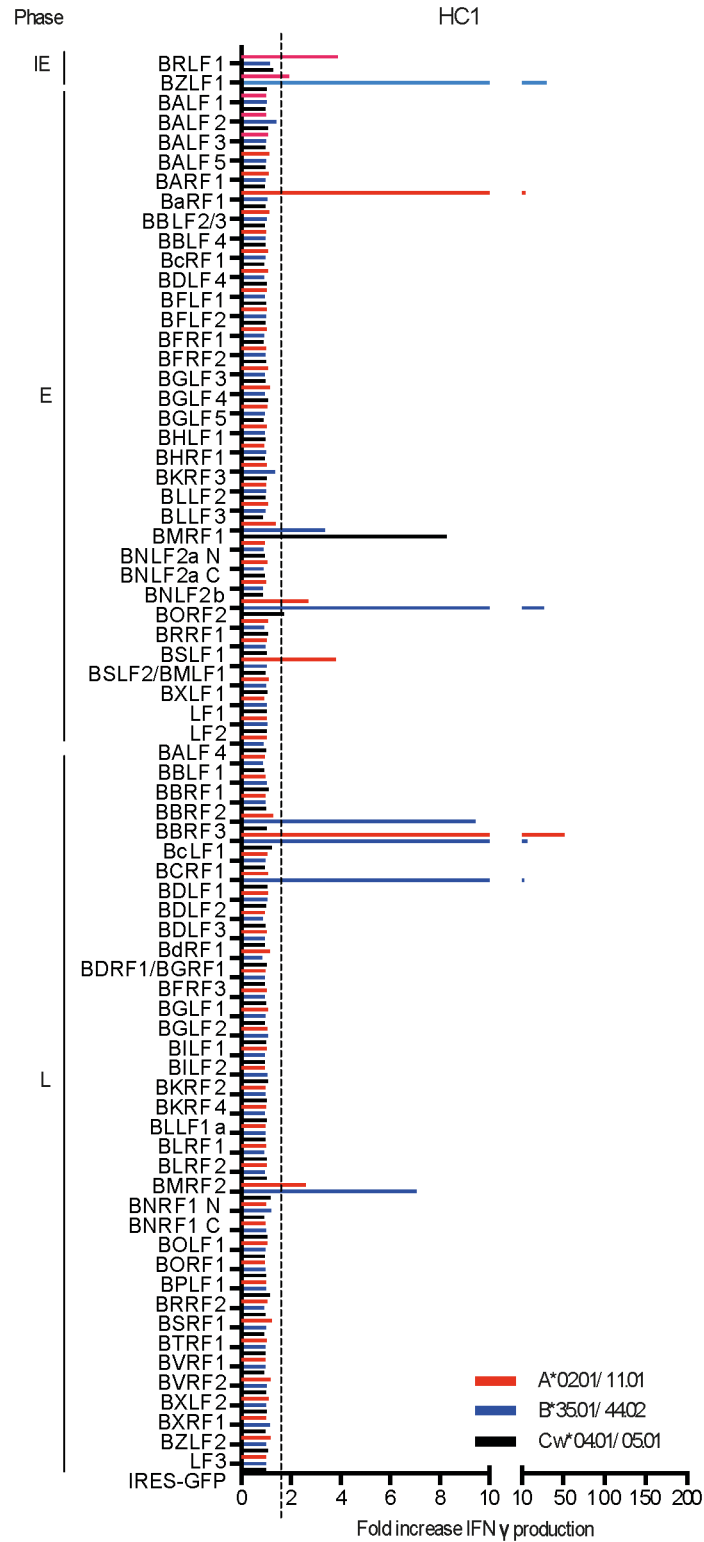


Fig 6. Results from proteome-wide screening of the memory CD8+ T cell response in HC1 (HLA-A,B,C type as shown). Data are presented as in Fig 2.

<https://doi.org/10.1371/journal.ppat.1007110.g006>

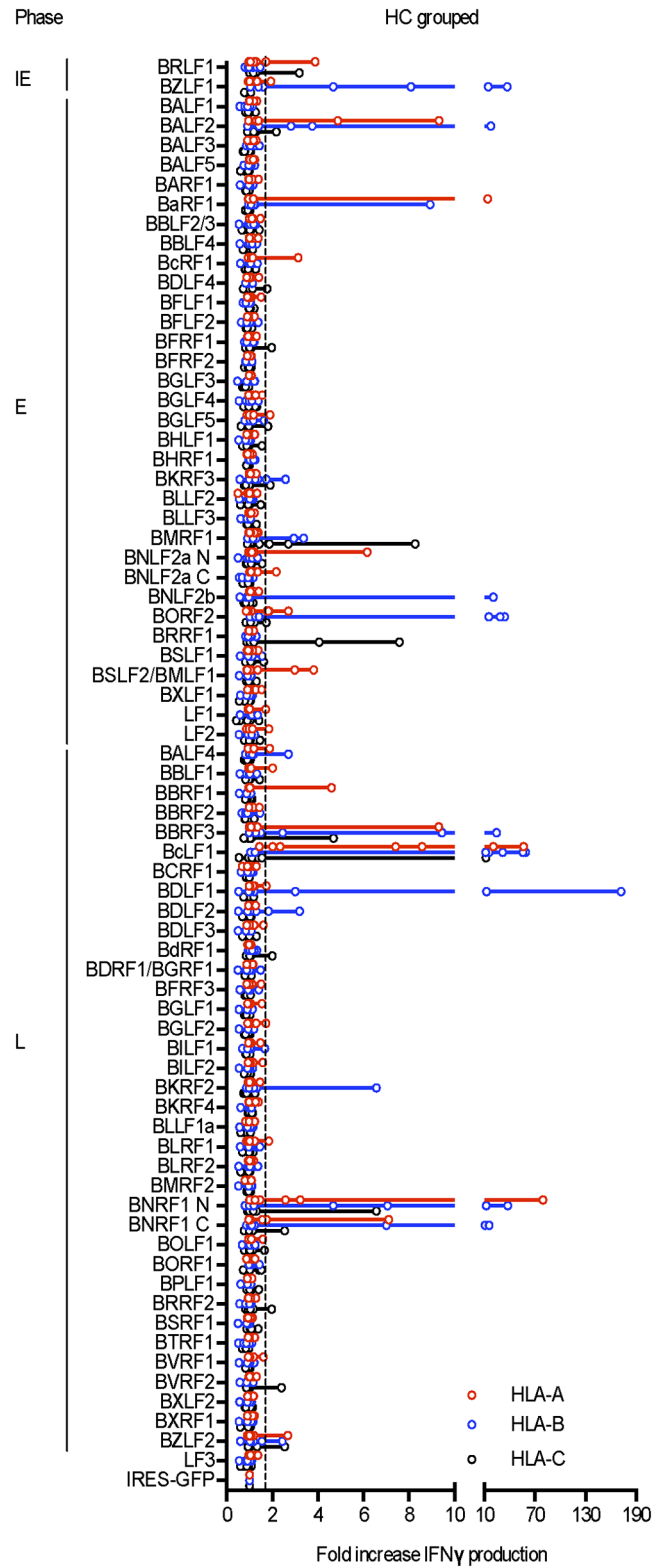
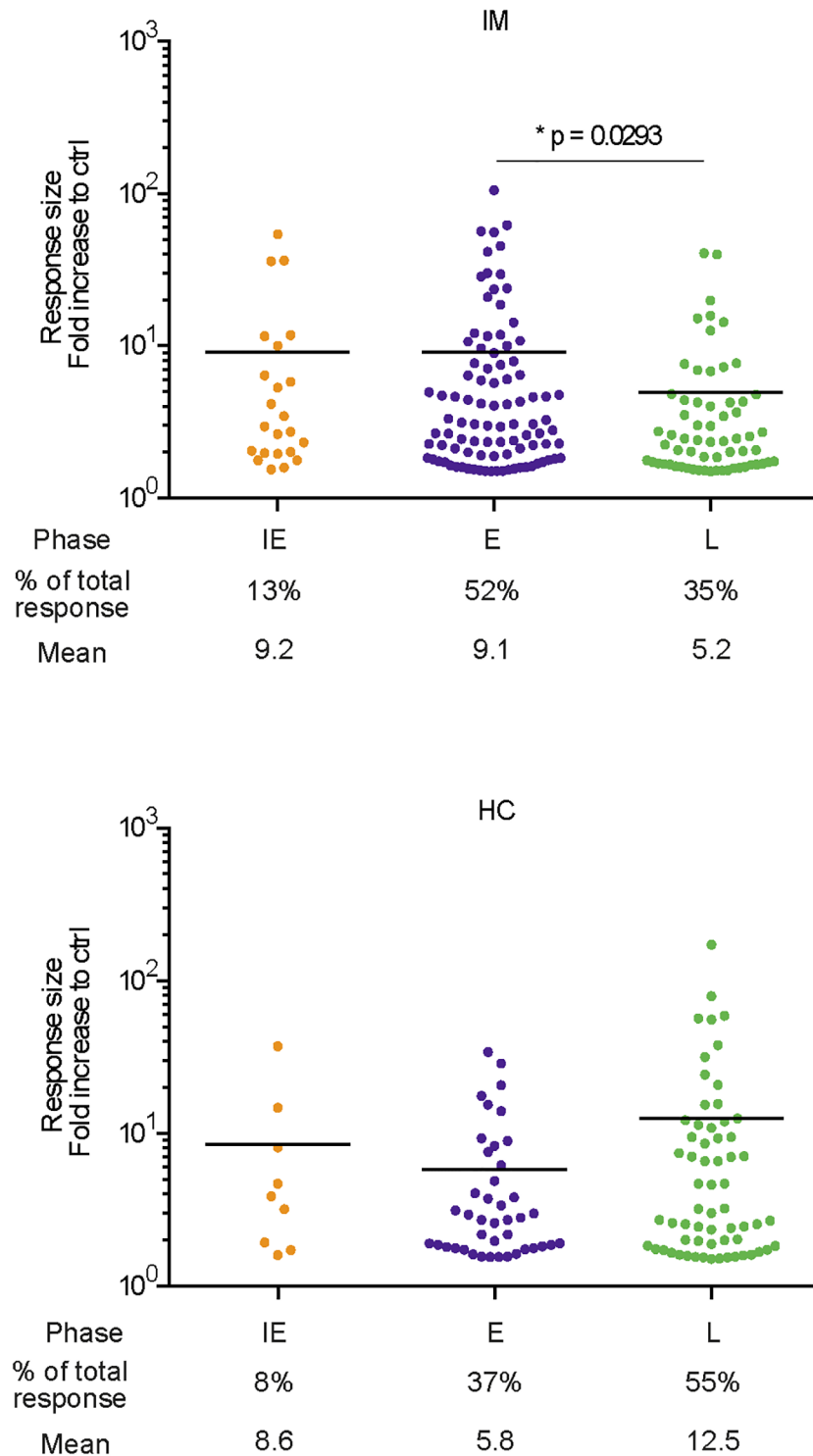


Fig 7. Combined results from proteome-wide screening of the memory CD8+ T cell responses in all 7 healthy carriers studied. Data are presented as in Fig 3, with individual results identified as open circles on each line.

<https://doi.org/10.1371/journal.ppat.1007110.g007>



**Fig 8. Comparison of individual response sizes to IE (orange), E (purple) and L (green) antigens detected in the 7 IM patients (top graph) and 7 HC donors (bottom graph).** Shown below the dot plots are the number of responses to IE, E and L antigens as a proportion of all responses, and the mean size of those responses; response size is defined as the fold-increase in IFN $\gamma$  production over the GFP control vector background. In IM patients, IE and E responses are on average larger than L responses (E is significantly larger than L,  $p = 0.0293$ ) and 52% responses are directed against E antigens; in HC, L responses are on average larger than IE and E responses and 55% responses are directed against L antigens.

<https://doi.org/10.1371/journal.ppat.1007110.g008>

to the different classes of target antigen occupy a wide range in both donor cohorts, IE and E-specific responses tend to be stronger in IM while L-antigen-specific responses tend to be the strongest in healthy carriers.

As a prelude to further analysis, [Fig 9](#) presents the individual IM patient and healthy carrier responses to the full spectrum of lytic cycle antigens in checkerboard format, with three vertical columns per individual distinguishing reactivities that are restricted through one of the donor's two HLA-A, -B or -C alleles. Positive responses are marked by shaded squares, with red squares identifying the strongest responses (>5-fold increase in IFN $\gamma$  release over background). With this as a reference point, we set out to address three further questions.

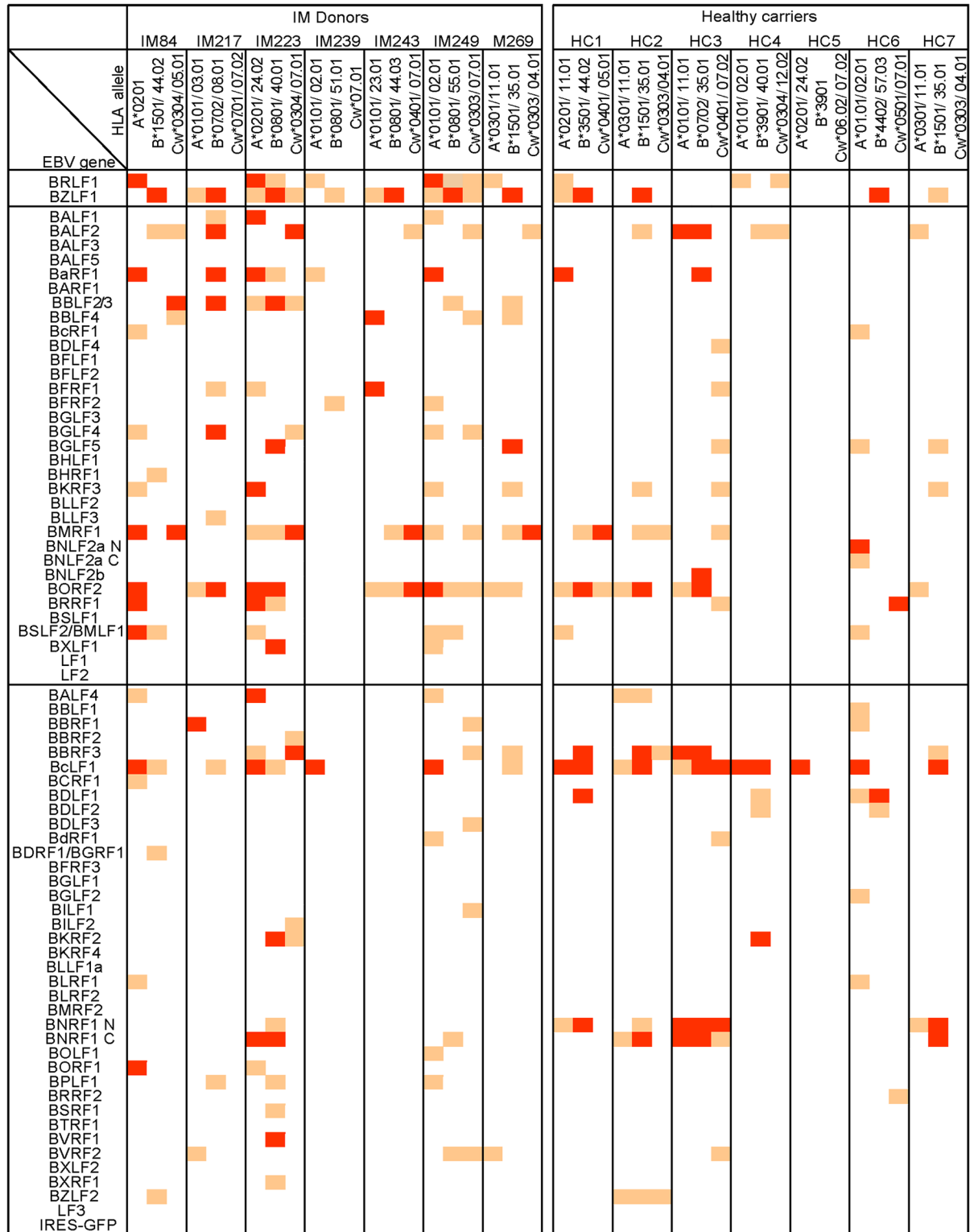
### Immunogenic EBV antigen/HLA allele combinations and prevalent responses

Focusing now only on those responses detected as positive in the proteome-wide screening assays, we conducted further experiments to identify the individual restricting allele in each case. For this purpose, effector cell preparations from all the above IM patients and healthy carriers were re-screened on EBV-negative COS7 cells [27] transiently transfected to express the target antigen of interest and one of the two candidate HLA alleles. This formally identified the antigen/HLA I restricting allele combinations against which responses were directed. [S3 Table](#) lists the antigens presented through the individual HLA-A, HLA-B and HLA-C alleles, and the donors (IM or HC) who made a relevant response. These include (i) 51 antigen-specific responses restricted through one of 6 HLA-A alleles that are common or relatively common in Caucasian populations, namely HLA-A\*0101, A\*0201, A\*0301, A\*1101, A\*2301 and A\*2402, (ii) 73 responses restricted through one of 9 HLA-B alleles, including common alleles such as HLA-B\*0702, B\*0801, B\*1501, B\*3501 and B\*4001, and (iii) 31 responses restricted through one of 7 HLA-C alleles. Based on existing records of known EBV-specific CD8+ T cell responses [8] (the Immune Epitope Database IEDB.org), a large majority of these antigen/HLA allele target combinations are novel. Among the most noteworthy are the 6 antigens found to elicit an HLA-A\*0101-restricted response, since these represent the first well documented examples of this common HLA allele mediating a response against any EBV antigen, lytic or latent. Likewise the number of HLA-C-restricted lytic cycle responses is unexpectedly high when compared to latent antigen responses which rarely if ever display HLA-C restriction.

We went on to ask whether the above data allowed one to identify antigen/HLA I combinations that induced "prevalent" responses, i.e. where a response to that combination was seen in the majority of individuals possessing that HLA I allele [28]. Such combinations are shaded in [S3 Table](#), alongside the number of relevant donors studied (ranging between 2 and 8 per allele). Prevalent responses were seen in the context of three HLA-A alleles (A\*0201, A\*1101, A\*2402), six B alleles (B\*0702, B\*0801, B\*1501, B\*3501, B\*4001, B\*4402) and three C alleles (C\*0303, C\*0304, C\*0401). Many of these responses are again novel. Interestingly, there were also several instances where prevalent responses on different HLA I backgrounds were directed against the same viral antigen. These target antigens were not drawn from one phase of the cycle, however, but straddled across the IE/E/L range. For example, BZLF1 (IE phase, transactivator) was a prevalent target on four alleles and a target on 11 alleles in total, BORF2 (E phase, ribonucleotide reductase large sub-unit) was a prevalent target on three alleles and a target on 11 alleles in total, and BcLF1 (L phase, major capsid protein) was a prevalent target on five alleles and a target on 9 alleles in total.

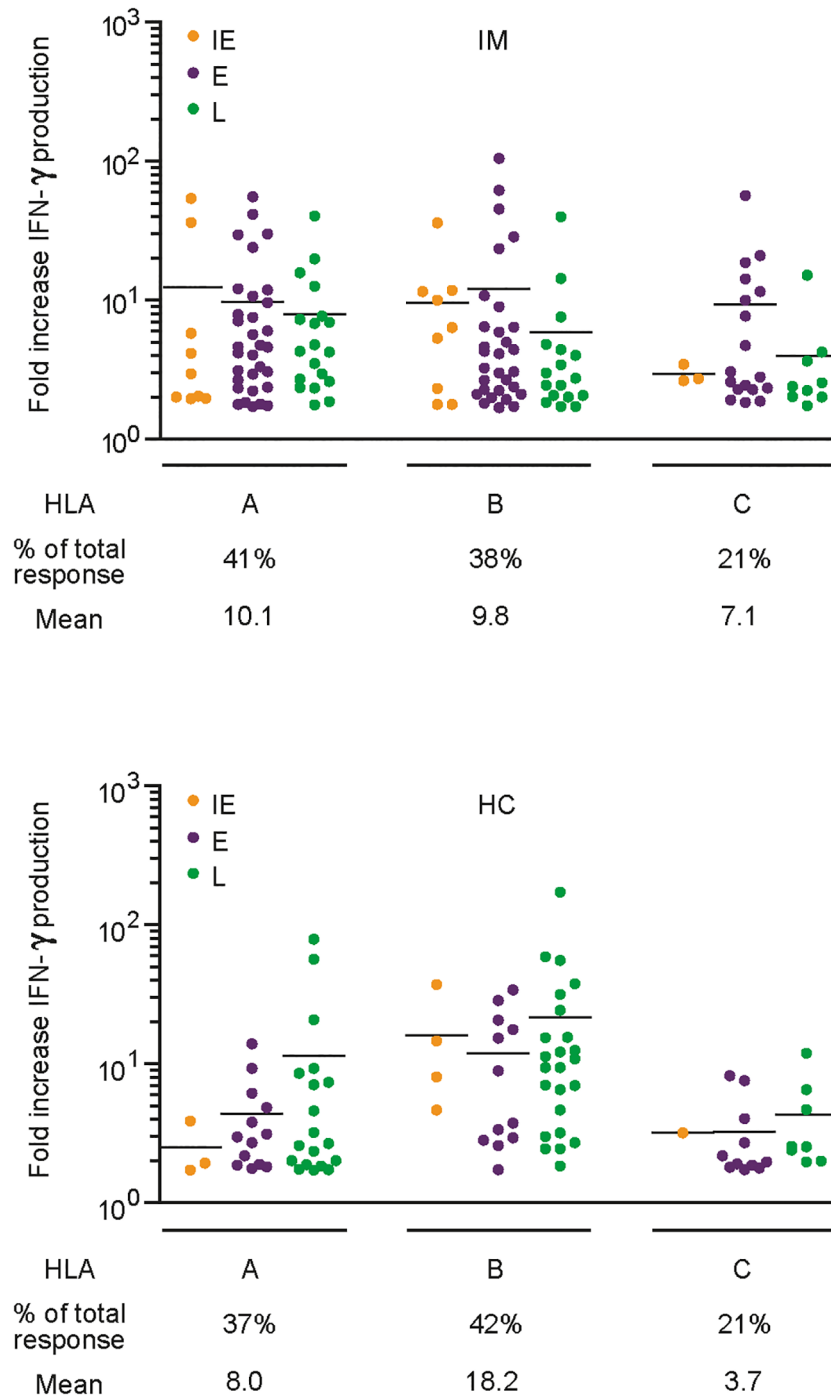
Identifying the HLA restricting alleles allowed us to determine the relative number of HLA-A- versus B- versus C-restricted responses seen in IM versus healthy carriers and also the relative strength of those responses in the two situations. The data are shown in [Fig 10](#).





**Fig 9. Summary of all individual responses detected in the 7 IM patients and 7 healthy carriers studied.** Lytic gene targets are arranged vertically in blocs of IE, E and L antigens as in Fig 2. Individual responses mapping to the donor's HLA-A, B or-C restricting alleles are identified as orange and red squares; red squares denote the stronger responses (IFN $\gamma$  release >5-fold greater than background).

<https://doi.org/10.1371/journal.ppat.1007110.g009>



**Fig 10. Comparison of individual response sizes restricted through HLA-A versus HLA-B versus HLA-C alleles in the 7 IM patients (top graph) and 7 HC (bottom graph).** Shown below the dot plots are the number of responses restricted through those alleles as a proportion of all responses, and the mean size of those responses. Colours indicate individual responses to IE (orange), E (purple) and L (green) antigens. In IM, HLA-A and B-restricted responses are more common than those restricted through HLA-C and have a slightly higher mean; by contrast in healthy carriers, HLA-B-restricted responses are the most common and are larger than both HLA-A- restricted and HLA-C-restricted responses.

<https://doi.org/10.1371/journal.ppat.1007110.g010>

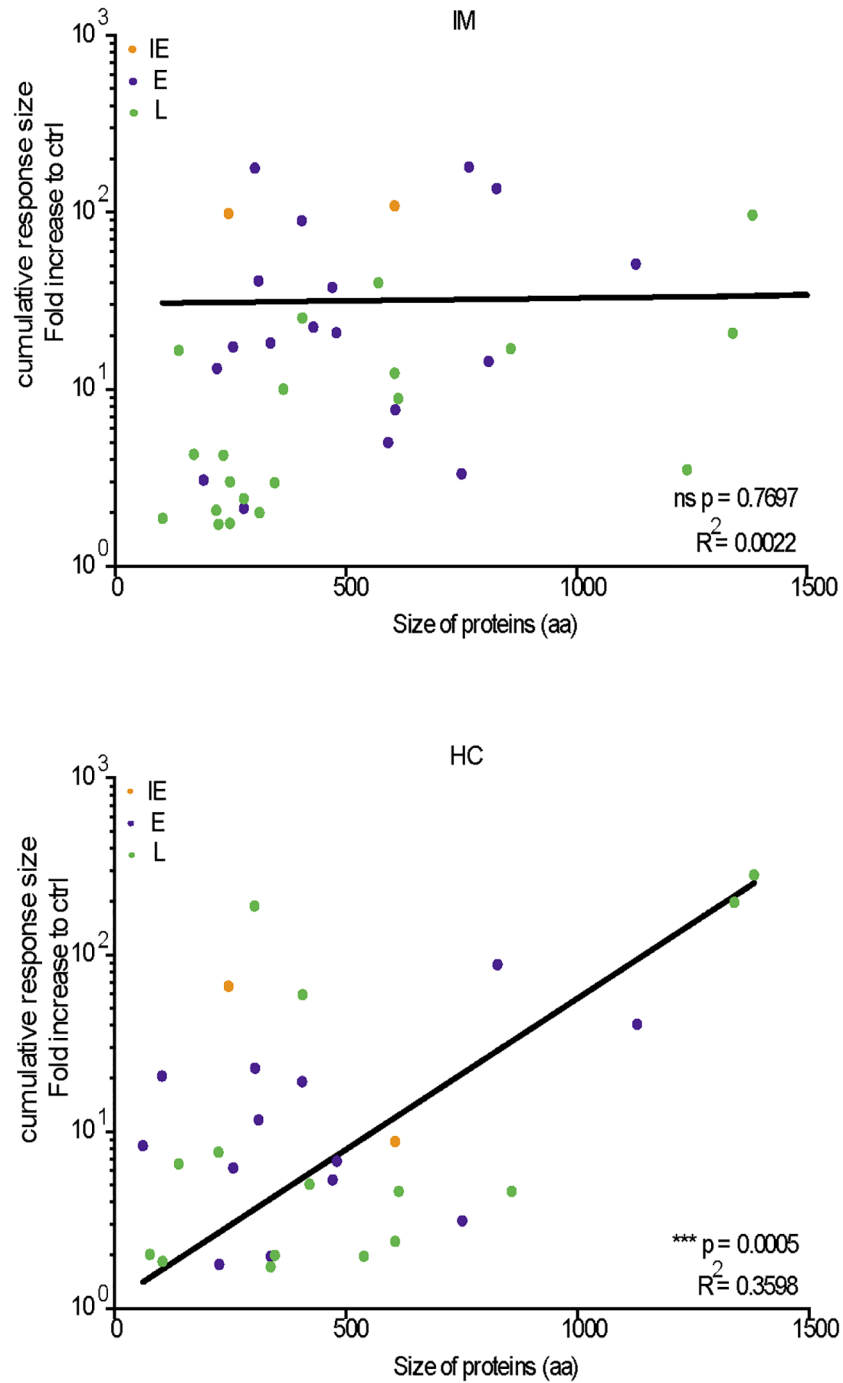
Compiling the results from all 7 IM patients, HLA-A- and HLA-B-restricted responses were both more common than those through HLA-C (60 and 56 versus 30 responses respectively) and on average slightly larger. By contrast, analysing the healthy carrier results in the same way, HLA-B-restricted responses were not only the most common (41 versus 35 HLA-A- and 20 HLA-C-restricted) but also gave significantly stronger responses than both their HLA-A- and C-counterparts (HLA-B versus A:  $P < 0.01$ , HLA-B versus C:  $P < 0.001$ . Kruskal-Wallis test with a Dunn's multiple comparison). Notably the greater contribution from HLA-B alleles in virus carriage was not just a consequence of the shift towards L antigen targets, since the same trend was seen comparing the HLA restriction of IM and carrier responses against the separate blocks of IE, E and L antigens.

### Antigen size in relation to response strength

As the above work has shown, CD8+ T cell responses to EBV are most often complex mixtures, with up to 42 distinct reactivities detectable in any one individual. The variety of HLA types among both IM patients and healthy carriers would be expected to diversify target choice across the range of lytic cycle proteins. However a subset of proteins appear to preferentially attract responses, based on the frequency with which they are detected as targets (orange shading) and especially as the most prominent targets (red shading) in Fig 9. Moreover the hierarchy of responses to individual proteins is different in IM versus healthy carriers. To provide a measure of antigenicity for each target detected, we summed all of the response sizes seen to that antigen in the IFN- $\gamma$  assays in IM patients and, separately, in healthy carriers. In each case we then plotted the cumulative size of the response against the size of the antigen (expressed as number of unique amino acid residues). We reasoned that, if all viral proteins were equally available for presentation to the CD8+ T cell repertoire in vivo, then one might anticipate that the larger proteins (i.e. proteins containing a greater number of unique peptides) would attract a correspondingly large proportion of overall responses. Interestingly, as shown in Fig 11, there was no obvious link between the two parameters when looking at the IM data, where strong responses against small-to-medium size IE and E antigens such as BZLF1, BaRF1, BMRF1 and BRLF1 were a major feature. In contrast response strength and antigen size were significantly correlated in healthy carrier responses, where the strongest cumulative responses were against large L antigens such as BcLF1 and BNRF1. Such a result is at least consistent with the idea that antigen display on cells inducing the primary response is not a fair reflection of the entire EBV lytic cycle proteome, whereas this bias is alleviated in the long-term carrier state.

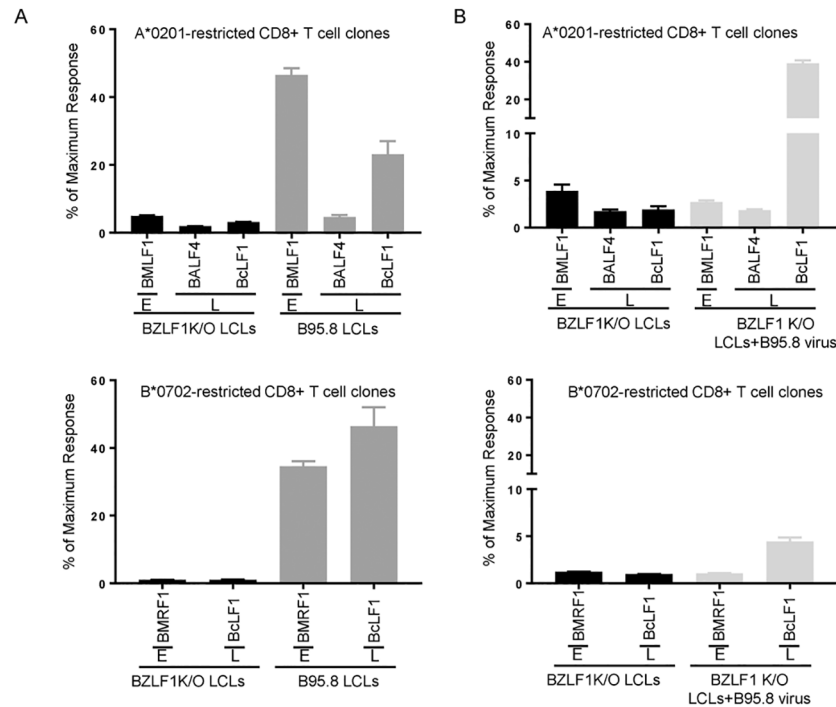
### Biological efficacy of the L antigen-specific response

The present identification of strong L antigen-specific responses prompted us to examine the potential biological relevance of these effectors. For this purpose, we asked whether such cells could recognise LCL cultures in which a fraction of cells are naturally in lytic cycle. Previous studies of this kind had used CD8+ T cell clones against defined epitopes in sub-dominant L antigens and had found generally poor LCL recognition [12], reflecting the impairment of antigen presentation by immune evasins in late lytically-infected cells [29]. To extend such studies to a strong L antigen, we first used limiting dilution of healthy carrier effector preparations to isolate BcLF1-specific CD8+ T cell clones restricted through HLA-A\*0201 or B\*0702, alleles mediating prevalent BcLF1 responses, and identified ALIDEFMSV (BcLF1 amino acids 1341–1349) and RPSKQRTFIVV (BcLF1 amino acids 109–119) as the principal A\*0201- and B\*0702-restricted epitopes respectively. These clones were then assayed alongside previously established clones specific for A\*0201- and B\*0702-restricted epitopes in other lytic antigens.



**Fig 11. Comparison of the cumulative size of IM patient and healthy carrier responses to individual target antigens in relation to antigen size.** For each group of donors, the response size shown for each antigen represents the sum of all individual response sizes to that antigen. Antigen size is shown as the number of amino acids in the primary sequence (allowing for any repeat sequences) as in S1 Table. Colour coding identifies IE (orange), E (purple) and L (green) antigens. Note that only those antigens that induced a detectable response are included in this analysis; for the purpose of presentation, we do not show the very small IM donor response to the large BPLF1 protein. Immunogenicity and antigen size were significantly correlated in healthy carrier responses ( $P = 0.0005$ ,  $R^2 = 0.3598$ ).

<https://doi.org/10.1371/journal.ppat.1007110.g011>



**Fig 12. In vitro assays of target cell recognition by BcLF1-specific CD8+ T cell clones.** Recognition of target LCLs by CD8+ T cell clones to HLA-A\*0201- and B\*0702-restricted epitopes in BcLF1 (ALI) compared to recognition by clones to other E or L phase lytic antigens. Recognition is expressed relative to that seen against the relevant epitope peptide-pulsed LCLs (optimal recognition). All results are shown as mean  $\pm$  SD from 3 separate experiments using 3 different target LCLs. (A) Effectors are: Top panel, HLA-A0201-restricted T cell clones against GLC (from early antigen BMLF1), FLD (from late antigen BALF4) and ALI (from late antigen BcLF1). Targets were either HLA-A0201-positive wild-type B95.8 LCLs (dark grey bars) or BZLF1 K/O LCLs (black bar). Bottom panel, HLA-B\*0702-restricted T cell clones against RPQ (from early antigen BMRF1) and RPS (from late antigen BcLF1). Targets were either HLA-B\*0702-positive wild-type B95.8 LCLs (dark grey bars) or BZLF1 K/O LCLs (black bar). (B). Effectors are as above. Targets are: Top panel: HLA-A\*0201-positive BZLF1 K/O LCLs either untreated (black bar) or pulsed overnight with EBV virions (light grey bar). Bottom panel: HLA-B\*0702-positive BZLF1 K/O LCLs either untreated (black bar) or pulsed overnight with EBV virions (light grey bar).

<https://doi.org/10.1371/journal.ppat.1007110.g012>

Fig 12A compiles data from three experiments testing each of the clones against three pairs of appropriately HLA-matched LCLs carrying either wild-type EBV (i.e. LCLs harbouring some cells in lytic cycle) or, as a negative control, BZLF1-knockout virus (i.e. LCLs devoid of lytically-infected cells) [30]. Recognition was assayed by IFN $\gamma$  release and expressed as a percentage of that seen against the same target cells optimally loaded with epitope peptide. On both restriction elements, the BcLF1-specific clones showed unexpectedly strong recognition of the wild-type (but not the BZLF1-knockout) LCL targets, at a level not dissimilar to that shown by E antigen-specific clones and (in the A\*0201-restricted assays) much stronger than that shown by a typical clone against a sub-dominant L antigen, BALF4.

Given these results, we wondered whether such strong BcLF1 recognition could all be ascribed to presentation of the endogenously expressed protein by late lytically-infected cells. Another possibility was that BcLF1, one of the most abundant proteins in virus particles, might be accessing the HLA I presentation pathway in latently-infected LCL cells through receptor-mediated uptake of virions released from the lytically-infected cell fraction. To investigate this, LCLs carrying BZLF1-knockout virus were either left unexposed or exposed overnight to a purified, uv-inactivated, EBV virion preparation, before testing as targets for the

same set of T cell clones. The results are shown in Fig 12B, again as data compiled from repeat assays on three target LCLs and expressed in the same way. We consistently observed sensitisation of the virus-loaded cells to BcLF1-specific recognition by both A\*0201- and B\*0702-restricted T cells (albeit weakly in the latter case), but not to recognition by clones specific for E antigens (not present in virions) nor to the less abundant virion-envelope protein BALF4. To our knowledge, this is the first clear evidence of cross-presentation via the HLA I pathway by LCL cells and may represent a special case involving an antigen which is abundant in the virus particle and is delivered to latently-infected cells via receptor-mediated endocytosis. Taken overall, these results show that one of the most dominant components of the L antigen-specific CD8+ T cell response, that against BcLF1, is well able to recognise semi-permissive B cell lesions and further suggest that such recognition may not be restricted to the lytically-infected cell fraction.

## Discussion

This paper reports the first comprehensive study of CD8+ T cell responses to EBV lytic cycle proteins and the first proteome-wide comparison of CD8+ T cell target choice in primary versus persistent infection for any human herpesvirus. We began by screening effectors from 7 acute IM patients on the full panel of 70 EBV lytic cycle proteins. This provided a much richer picture of the primary CD8+ T cell response than seen hitherto, with a mean of 21 and a range of 5–42 antigen-specific reactivities detected per patient. While there are no comparative data from primary infections with other human herpesviruses, such breadth is broadly in line with that seen in mice responding to murine cytomegalovirus (MCMV) and murine gamma2-herpesvirus (MHV68) challenge [31–33]. The new data reinforced certain aspects of earlier work on IM, in particular the high incidence and strength of responses against the two IE transcriptional activators, BZLF1 and BRLF1, and to a lesser extent against two E proteins, BALF2 and BMRF1, with roles in viral DNA replication [12]. However, the data also identified three prominent new E antigen targets, BBLF2-3, the primase factor, and BORF2 and BaRF1, large and small sub-units of the viral ribonucleotide reductase. While L-specific responses were frequently present in IM, they were generally weak. Only one L antigen, the major capsid protein BcLF1, came close to the dominant IE and E targets in terms of the frequency and size of responses, and this was mainly due to a response seen in the four HLA-A\*0201-positive patients.

Parallel work on healthy carriers, including one individual also studied in primary infection (IM269/HC7), showed a relative shift in the distribution of responses compared to IM with L antigen targets gaining greater emphasis. Responses to some of the strongest IE and E antigen targets were still frequently present. However the most prominent response in every healthy carrier tested was directed against an L antigen, most often against one of three virion structural proteins, the major capsid protein BcLF1, the major tegument protein BNRF1 and the envelope glycoprotein BBRF3 (gM). The concept that virus carriage brings an increasing emphasis on L antigen targets also chimes with published data from rhesus macaques carrying the EBV-related rhesus gamma-1 herpesvirus, rh-LCV, where memory cell responses were equally split between the 10 E and 8 L rh-LCV antigens tested, with a hint of greater L focus in older animals [15].

We considered the possibility that the above differences were artefacts of the different protocols used to generate primary and memory effectors, and/or by the process of *in vitro* expansion per se. However we do not believe this to be the case. Primary effector preparations were made by direct expansion of the activated CD8+ T cells that dominate the blood picture in IM, and earlier work using defined HLA/EBV peptide tetramers has shown that such *ex vivo*-

expanded IM effectors accurately reflect the *in vivo* response [12]. By contrast, the small population of EBV-specific memory cells in the blood of healthy carriers need to be selectively reactivated *in vitro* before expansion; not surprisingly, the only published attempt at direct memory cell expansion *ex vivo* revealed very few detectable EBV-specific reactivities despite screening on a wide target panel [34]. To avoid the bias inherent in using LCL cells to reactivate memory, we adapted an approach first developed for HSV [3] whereby monocyte-derived dendritic cells cross-present the whole spectrum of virus-coded lytic antigens to the CD8<sup>+</sup> memory T cell pool. We therefore induced latently-infected HEK293 cells into lytic cycle and made total cell extracts at a time when >50% cells had already entered late phase and which recent proteomic analysis suggests is optimal for the most complete representation of all lytic antigens [26]. While it is possible that some antigens were absent or under-represented in such extracts, the fact that memory responses were reactivated across a wide spectrum of IE, E and L antigens suggests that antigen representation is not a major problem. Indeed among the targets of these reactivated responses were antigens such as the immune evasin BNLF2a, which is only transiently detectable early in lytic cycle [19], and the portal and scaffold proteins BBRF1 and BDRF1, known to be the least abundant components of the capsid in virus particles [35] and reportedly present at very low concentrations in lytically-infected cells [26]. These considerations and the fact that, for IE and E antigens with already defined target epitopes, the relative strength of antigen-specific memory responses seen in expanded memory cell preparations broadly reflected that seen in *ex vivo* Elispot assays suggests that such preparations fairly represent the content of virus-specific memory.

In all but one case our IM and healthy carrier cohorts involved different individuals, but it seems unlikely that chance differences in HLA type between the two groups could account for the different patterns of responses. Of the 26 HLA I alleles covered by the present study, 16 alleles (5 HLA-A, 5 HLA-B and 6 HLA-C) are shared between the two donor groups; witness also the evidence from IM269/HC7 where a shift in target choice was seen over time in the same individual. Interestingly HLA-A and HLA-B-restricted responses were equally matched in both incidence and size in primary infection, whereas HLA-B-restricted responses appeared to make the greater contribution in memory. A predominance of HLA-B-restricted responses has been observed in HIV [36], measles [37] and mycobacterial [38] infections and was indeed suggested in an earlier study of virus carriers using EBV epitope peptides [39]; the effect has been linked to the greater heterogeneity of B alleles and to the ability of individual HLA-B proteins to accommodate a wider range of peptide sequences [40]. It is also worth noting that, in both phases of infection, around 20% lytic antigen-specific responses were HLA-C-restricted. This contrasts sharply with EBV latent antigen-specific responses where examples of HLA-C restriction are extremely rare [8, 41]; at least two influences may be at work here, firstly the possible involvement of different antigen presenting cells in the two situations, and secondly the fact that one of the viral evasins encoded in lytic cycle, BILF1, appears to impair HLA-A/B- but spare HLA-C-restricted presentation [42]. Assigning responses to individual HLA alleles defined >150 different lytic antigen/HLA target combinations, many of which are novel, and identified a subset of those that were frequently recognised in individuals with the relevant allele. One of the more interesting comparisons between individual alleles involved HLA-A\*0101 and A\*0201 because of their identification as high and low risk alleles respectively for the development of EBV-positive Hodgkin lymphoma [43–45], a disease potentially linked to impaired T cell surveillance [44, 46]. In that regard, previous studies have defined a small number of EBV latent and lytic epitopes restricted through A\*0201, whereas numerous studies have failed to reveal any EBV-specific responses restricted through A\*0101 [8, 47]. The present work extends this analysis significantly; HLA-A\*0201 was indeed the stronger restricting allele, but not overwhelming so. Overall A\*0201-restricted responses were detected against

20 different lytic cycle antigens among the A\*0201-positive donors studied (4 IM, 4 healthy carriers). By comparison, A\*0101 restricted responses were seen against 6 different antigens among a similar number of A\*0101-positive donors (4 IM, 3 healthy carriers); it may be significant that each of these novel A\*0101-restricted responses was relatively weak and, with one exception, only detected in IM.

With respect to the data from IM patients, our proteome-wide screening greatly strengthens the evidence for an IE > E > L hierarchy among lytic cycle antigens as targets of the EBV-induced primary response. Note that this hierarchy parallels the efficiency with which IE, E and L antigens are presented on the surface of lytically-infected cells because, as cells move through lytic cycle, endogenous antigen presentation is progressively impaired by virally-coded evasins [18–23, 29] and so epitopes derived from earlier expressed antigens are preferentially displayed. This parallel leads us to suggest that the primary response to EBV may be largely driven by direct contact between the CD8+ T cell repertoire and infected cells themselves. Thus the two IE proteins, BZLF1 and BRLF1, are dominant targets and together attract ~13% of all IM responses while accounting for only ~3% of the total lytic protein sequence space. A further 52% of all IM responses are directed against E proteins, although it must be stressed that E antigen choice is not evenly distributed. There are large differences between individual E proteins, with almost half of the responses being directed against just 5 dominant targets (BALF2, BMRF1, BBLF2-3, BORF2 and BaRF1). It may be that the timing of these particular proteins' expression renders them less protected by the early evasin BNLF2a and/or the early/late evasin BILF1. However this remains unclear because the precise chronology of antigen expression in early phase is poorly defined. Other factors, such as the rate of de novo antigen synthesis, may be at least as important and it is significant that BALF2, BMRF1, BORF2 and BaRF1 are among the most highly expressed E antigens in lytic cycle [26, 35].

Our parallel analysis of CD8+ T cell responses in healthy carriers revealed an increasing focus on L phase antigens. More than 50% of detectable memory responses were directed against L antigens compared to only 30% in IM. This shift leads us to speculate that, during years of virus carriage, recurrent entry of latently-infected B cells into lytic cycle provides a bolus of lytic antigens, including L antigens, that are cross-presented to CD8+ T cells and this switch in the main pathway of antigen presentation re-shapes the memory response. Again, however, there are large differences between the 36 L phase proteins, with three dominant targets (BcLF1, BNRF1 and BBRF3) attracting more than half of all L-specific responses. Note that of these, BcLF1, the major capsid protein and BNRF1, the major tegument protein, are both in the top 15 EBV proteins detected in lytically-infected cells by proteomic analysis [26] but, interestingly, are also the two most abundant proteins in the proteome of mature virus particles [35]; BBRF3, the gM glycoprotein is reportedly much less abundant but, as a glycosylated protein, may have been under-scored in these proteomic assays. It therefore seems possible that, as well as lytically-infected cells, virus particles themselves are important sources of exogenous antigens feeding the immune system. It is nevertheless striking that other abundant virion proteins such as the large tegument protein BPLF1 and the major envelope protein BLLF1 (gp350) [35] were rarely if ever seen as targets for CD8+ memory T cell responses in the present work or, for gp350, in earlier peptide screens [16, 48]. If the memory response is indeed re-shaped by cross-presentation, this implies that some virion proteins have differential access to the cross-priming pathway.

Importantly, the healthy carrier data move the overall picture of EBV-specific CD8+ T cell memory closer to that seen for HSV and CMV. Thus we detected responses to a mean of 14 different EBV lytic antigens per donor, compared to values of 8 and 17 in the HSV and CMV studies respectively [3, 4]. In total, healthy EBV carriers mounted responses against 30 of the 70 EBV lytic antigens tested, the corresponding values being 40/74 for HSV and 107/213 for



CMV antigens. Of the 30 EBV lytic antigens identified, the two IE proteins remained frequent targets, accounting for almost 10% of all memory responses; this degree of focus, some three-fold above expectation based on IE sequence space, is very similar to that seen with the CMV IE proteins, though the trend appears to be less marked with HSV. Apart from IE targets, detectable responses in the HSV and CMV studies were fairly evenly spread across early, early/late and true late antigens. However, particular antigens were again dominant; for example, among HSV early proteins the ribonucleotide reductase large subunit UL39 was a strong target [3], as was the large sub-unit BORF2 for EBV. Furthermore, among CMV and HSV late proteins some of the most frequently observed targets were abundant virion components [3, 4]; this is again in line with our own findings, although we noted interesting differences in detail. Thus the major capsid protein BcLF1 is the dominant L antigen for EBV-induced responses but its homologues in HSV (UL19) and CMV (UL86) are less frequently recognised. Conversely the most commonly recognised target in the CMV system is UL48, the large tegument protein, whereas its homologues in EBV (BPLF1) and HSV (UL36) seem to induce responses only rarely; for EBV the dominant tegument target is BNRF1, a protein unique to the gamma-herpesvirus subfamily which is delivered into cells by the virion and plays an important role in subverting cellular resistance to viral gene expression [49]. In the absence of corresponding data from other human herpesviruses, one does not know if these differences are sub-family-specific or unique to the individual agent.

Looking more broadly, the present paper brings our understanding of EBV lytic antigens as CD8+ T cell targets to the same level as that already established for latent antigens [8]. It shows that, while there are many lytic cycle proteins, they vary widely in immunogenicity and only a select few induce responses in a high proportion of people. Examples include BZLF1 (IE), BORF2 (E) and BcLF1 (L) that are seen by 11, 10 and 13, respectively, of our 14 study subjects. While such frequently targeted antigens are clearly of interest, a key question concerns the biological efficacy of the responses they induce. This is particularly true of the newly discovered L antigen-specific responses, which one might predict would be poor controllers of EBV infection because their natural target cells are protected from recognition by the virus-coded immune evasins. However our final experiments challenge this view. The results show strong recognition of wild-type LCLs by CD8+ T cells against the major capsid protein BcLF1 and further suggest that, within semi-permissive foci of B cell infection, a highly abundant virion protein such as BcLF1 can be delivered to latently-infected cells through receptor-mediated virus transfer in sufficient amounts to access the HLA I pathway of presentation. An ability to target both lytically- and latently-infected B cells in semi-permissive lesions greatly enhances the BcLF1 response's potential efficacy. The same can also be argued for responses to another frequently recognised L antigen, the major tegument protein BNRF1, though in this case the broadening of target recognition to include latently-infected cells does not require cross-presentation. Thus we recently found that BNRF1 was not just a late lytic protein but was also constitutively expressed at T cell-detectable levels in growth-transforming latent infection [16]. This adds to mounting evidence that aberrant lytic antigen expression [50, 51] and/or lytic cycle entry itself may be intimately involved in EBV-driven cell proliferation and disease pathogenesis [52]. That realisation has spurred interest in harnessing both latent and lytic antigen-specific T cells as effectors in two contexts: firstly in prophylactic vaccine design, where the aim is to contain the growth-transformed foci through which EBV colonises the general B cell system [39, 41], and secondly in targeting EBV-associated malignancies and the EBV-transformed lymphoproliferative disease lesions to which T cell-compromised patients are especially prone [53]. It is hoped that the present study will aid progress towards those goals.

## Materials and methods

### Ethics statement

The samples were from an already-existing study (Cellular immunity to herpesvirus infection: Studies with EBV & CMV). This study (14/WM/1254) was approved by West Midlands—Solihull Research Ethics Committee UK. All the samples were obtained following full written informed consent and were anonymized after collection.

### Donors

Patients in the acute phase on IM (within 7 days of the onset of symptoms) were identified on clinical grounds and diagnosis confirmed by high leukocyte counts and by IgM anti-virus capsid antigen (VCA) positivity. One patient also gave samples 4 years later, long after resolution of the illness. Other healthy carriers were individuals whom we knew from earlier serologic records had been infected with EBV for at least 5 years; none had a history of IM. Heparinised blood samples of 40–60ml were taken from both sets of donors. All donations were made in accordance with protocols approved by the West Midlands—Solihull Research Ethics Committee. For each donor, an aliquot of PBMCs was used to generate an EBV (B95.8 strain)-transformed LCL while the rest was used, either immediately or after cryostorage, as a starting population for the generation of effector preparations.

### HLA-expression constructs

DNA extracted from LCLs of donors was HLA-A,B,C-genotyped at the Anthony Nolan ([www.anthonynolan.org](http://www.anthonynolan.org)) using sequence-specific oligonucleotide PCR. For generating HLA expression constructs, RNA was extracted from the LCL, reverse-transcribed (SuperScript III) and the specific HLA allotype amplified using specific primers. A-tails were added to synthesized HLA cDNA using Taq polymerase (30mins at 72 °C) and subsequently cloned into pCDNA3.1-V5/HIS TOPO expression constructs (ThermoFisher). Sequenced alleles were aligned against HLA sequences from the international ImMunoGeneTics project ([www.imgt.org](http://www.imgt.org)).

### EBV gene-expression constructs

EBV lytic genes were PCR-amplified from purified bacmid DNA derived from the B95.8 EBV strain [25] and were cloned into pCDNA3.1 vectors with the addition of a 5' kozak sequence 'GCCACC . . .'. Note that we found it difficult to express two proteins, BNLF2a [54] and BNRF1, in full length form, and so their coding sequences were separated into two fragments and individually cloned into expression constructs (BNLF2a codons N-ter 1–41, C-ter 43–60; BNRF1 codons N ter: 1–763, C ter 744–1318). Two lytic gene constructs, BBLF2/3 and BDRF1/BGRF1, were generated by fusing individual PCR products. Two other lytic gene constructs, for BSLF2/BMLF1 and BPLF1, were kindly provided by Dr Shankar Swaminathan and Dr Maike Rensing respectively. A full list of the 70 lytic genes (as 72 constructs) is shown in [S1 Fig](#).

### Generation of EBV lytic cell lysate

HEK293 cells (obtained from American Type Culture Collection) stably transfected with B95.8 EBV strain as a bacmid [25] were maintained in standard culture medium (RPMI 1640 with 2mM L-glutamine (Sigma) containing 10% FCS, 500 IU/ml penicillin and 5000µg/ml streptomycin) supplemented with geneticin to maintain the EBV-bacmid. Lytic cycle entry was induced by transient transfection with the EBV-IE transactivator BZLF1. After 48 hours

the cells were harvested, re-suspended to  $4 \times 10^6$  cells/ml in RPMI-1640 followed by 5 freeze-thaw cycles in a dry ice-ethanol bath before being sonicated for 30s. Samples were clarified by centrifugation at 1600rpm for 5mins before being stored at  $-80^\circ\text{C}$ .

### Primary effector preparations

Cryopreserved IM donor PBMCs were thawed and re-suspended in standard culture supplemented with IL-2 as described previously [9]. The cells were then stimulated using gamma-irradiated and PHA-treated allogeneic PBMCs along with 30ng/ml anti-CD3 mAb (OKT3) and allowed to expand in culture for 2 weeks. The preparation was then depleted of CD4+ T cells (Dynabeads) and either used immediately or cryopreserved.

### Memory effector preparations

CD14+ monocytic cells were isolated from healthy carrier PBMCs using anti-CD14 coated beads (Miltenyi) and cultured for 4 days in standard culture medium containing 50ng/ml IL-4 and 50ng/ml GM-CSF (Peprotech) [55]. Remaining PBMCs were cryopreserved. The resultant immature monocyte-derived dendritic cells (moDCs) were harvested and re-suspended to  $4 \times 10^6$  cells/ml in standard culture media before exposure to the EBV lytic cell lysate at an equivalent cell ratio of 1:1. After 2 hours the mo-DC culture medium was supplemented with TLR-agonists RQR8-resiquimod (4 $\mu\text{g}/\text{ml}$ ) and Polyinosinic-polycytidylic acid potassium salt (Poly(I:C)) (20 $\mu\text{g}/\text{ml}$ ) as a maturation stimulus [56]. After 16–20 hrs the moDCs were harvested, washed and cultured with autologous lymphocytes cells at an effector: target ratio of 10:1. Specifically-activated cells were selected on the basis of CD137 upregulation as described in studies of HSV-specific T cell memory [3]. Note that we found CD137 upregulation to be optimal on day 3 of co-culture, longer than had been seen in the HSV system. This difference in timing probably reflects our use of cell-free extracts as an antigen source compared to the HSV study's use of uv-irradiated lytically-infected cells [3]; dendritic cell cross-presentation is reportedly quicker for antigens acquired via phagocytosis of dead/dying cells [57–59]. Activated CD3+ CD8+, CD137+ T cells were stained with Fixable Viability dye-eFluor 450 (ThermoFisher), anti-CD3-Allophycocyanin (APC), anti-CD8-APC-Cy7 and anti-CD137-PE (4-1BBL) (BD). Cells were sorted on a BD LSRFortessa X20, gating on live CD3+ lymphocytes and then CD8+CD137hi cells which were collected into tubes containing standard culture supplemented with IL-2. Sorted cells were centrifuged, re-suspended in 100 $\mu\text{l}$  standard culture supplemented with IL-2 and seeded into a 96 well U bottom plate. Using the same expansion conditions as with IM effectors, seeded cells were stimulated using irradiated and PHA-treated allogeneic PBMCs along with 30ng/ml anti-CD3 mAb (OKT3) and allowed to expand in culture for 2 weeks, then either used immediately or cryopreserved.

### Effector T cell screens

The target cells used in these were the EBV-negative cell lines MJS [17] (gifted from Prof. Wiertz, Utrecht University) for screening the full antigen panel, and COS7 [3] (obtained from American Type Culture Collection) for additional screening to restrict positive responses to a single HLA allele. Some 15,000 target cells were cultured per well in 96 well flat bottom culture plates. Duplicate wells were then transfected using Lipofectamine 2000 reagent (ThermoFisher) with 150ng/well of each individual EBV lytic gene construct plus 50ng of the donor's paired HLA-A, -B or -C alleles. After 24 hours cells, transfected cells were trypsinized and transferred to 96 well V bottom plates. The cells were washed 2x within their wells through centrifugation and re-suspended in 100 $\mu\text{l}$  standard culture medium. Effector cell preparations from individual IM donors or healthy carriers were thawed and re-suspended in standard

culture medium (without IL2) to a density of  $1 \times 10^6$  cells/ml. Those effectors were then seeded on top of transfected MJS targets at  $1 \times 10^5$  cells/well in 100  $\mu$ l. After a following 24 hours 50  $\mu$ l supernatant from each well was harvested and IFN $\gamma$  production assayed in an IFN $\gamma$ -capture ELISA. Significant responses were identified as those where IFN $\gamma$  production was 1.7-fold or more above the background control value (that seen for targets co-transfected with the relevant HLA alleles and the GFP construct); this cut-off was selected on the basis of preliminary experiments as best discriminating between weak but reproducible positive responses and negative responses. Where significant recognition was observed, the effectors were re-tested against the same EBV lytic gene construct expressed in COS7 cells alongside the relevant HLA-A, B or C alleles now tested as individual restricting elements, with positive recognition again defined as above. Note that, while COS7 is of simian origin, MJS is a human melanoma-derived cell line and expresses HLA-A\*0101, B\*0801 and C\*0701 endogenously; in the screening assays, however, antigen presentation through MJS's endogenous alleles was minimal and positive recognition required the presence of the exogenous HLA constructs.

### ELISPOT assays

PBMCs from HC1 were screened *ex vivo* for reactivity against defined HLA-restricted peptides from 7 EBV lytic proteins by IFN- $\gamma$  ELISPOT [16]. The peptide epitopes were YVLDHLIVV (BRLF1), EPLPQQLTAY (BZLF1), LLIEGIFFI (BaRF1), IPHHRPTIF (BLLF3), TLDYKPLSV (BMRF1), GLCTLVAML (BMLF1), and FLDKGTYYTL (BALF4) [8]. Note that, in the text, epitope peptides are referred to using their first three residues.

### Generation and testing of CD8+ T cell clones

To generate the BcLF1-specific clones, *in vitro*-expanded effector preparations from two healthy carriers were stimulated with COS7 cells ectopically expressing BcLF1 and either HLA-A\*0201 or B\*0702 overnight, and INF $\gamma$ -secreting T cells were enriched using IFN $\gamma$ -catch reagent (Miltenyi Biotec). Collected cells were then plated out using limiting dilution and clones tested against potential HLA-A\*0201 and B\*0702-restricted peptides within the BcLF1 sequence identified using the SYFPEITHI and IEDB programmes. Clone specific for two of the predicted epitopes, A\*0201/ALI and B\*0702 RPS, were detected and used in subsequent experiments alongside CD8+ T cell clones specific for epitopes from early antigens (BMLF1-GLC, BMRF1-RPQ) or late antigens (BALF4-FLD) established in earlier work [12]. For testing, firstly all clones were exposed to three pairs of wild-type (B95.8) and non-lytic (BZLF1 knockout) target LCLs from HLA-A\*0201 and/or HLA-B\*0702 positive donors. Secondly, the non-lytic target LCLs (three HLA-A\*0201-positive and three HLA-B\*0702 positive as above) were either left untreated or loaded with UV-irradiated EBV virions (Stratalinker 1800- 10x crosslink cycles (Stratagene)) at a dose of 100virus particles/cell [60] prior to assay. All assays were conducted using 50,000 LCL targets cultured with 5000 CD8+ T cell effectors of each epitope specificity and IFN $\gamma$  release assayed by ELISA. In addition, all experiments included target LCLs briefly loaded with 5  $\mu$ g/ml of the relevant peptide epitope to provide a value of optimal recognition by each CD8+ T cell clone.

### Statistical analyses

For univariate analyses, where data did not follow a normal distribution Mann-Whitney U test (for unpaired data) was used. Where data followed a normal distribution, it was analysed by two-tailed t-test. Where there were multiple independent variables, they were categorised and then analysed by Kruskal-Wallis test with a Dunn's multiple comparison. The correlation of

immunogenicity and antigen size was carried out using Linear Regression analysis. All analyses were performed with Prism version 6.0 (Graphpad software, San Diego, USA).

## Supporting information

**S1 Fig. Individual results from proteome-wide screening of the primary CD8+ T cell response in IM patients IM217, IM223, IM239, IM243, IM 249 and IM269.** Data are presented as in Fig 2.

(TIF)

**S2 Fig. Individual results from proteome-wide screening of the primary CD8+ T cell response in healthy carriers HC2, HC3, HC4, HC5, HC6 and HC7.** Data are presented as in Fig 2.

(TIF)

**S1 Table. EBV lytic cycle genes cloned into expression vectors.** The genes are arranged in IE, E and L categories and shown alongside the function (where known) and size (number of amino acid residues) of their protein products. \* BHLF1 and LF3 contain many repeat domains and their sizes have been reduced to reflect their unique amino acid content. \*\* Two genes, BNLF2a and BNRF1, were expressed as separate N-terminal and C-terminal fragments.

(TIF)

**S2 Table. Responses to defined HLA/epitopes in PBMCs *ex vivo* and responses to the corresponding HLA/antigen in *in vitro* expanded preparations.** PBMCs from HC1 were screened *ex vivo* for reactivity against defined HLA/peptides from 2 IE, 4 E and 1 L phase lytic antigens by IFN- $\gamma$  ELISPOT. Results are shown as the mean number of spot-forming cells (SFC) per million PMBCs from replicate wells after subtraction of baseline reactivity to DMSO. In parallel, recognition of the relevant HLA/antigen combinations by *in vitro* expanded effector preparations from HC1 are shown as fold-increases in IFN- $\gamma$  production over the GFP control vector background. Note that the smallest of the *in vitro*-expanded responses, against BMRF1, was reproducible but fell below the stringent 1.7-fold cut-off.

(TIF)

**S3 Table. Immunogenic EBV antigen/HLA allele combinations identified in this work.** Data are compiled for all the individual HLA-A, HLA-B and HLA-C alleles possessed by study donors. For each allele, the Table records the number of allele-positive donors, those antigens through which an allele-restricted response was observed, and the donors who made such a response. Shading identifies “prevalent” responses, i.e cases where more than half the donors with the relevant allele made a response to the specific allele/antigen combination.

(PDF)

## Acknowledgments

We thank Dr Claire Shannon-Lowe for assistance with culture and induction of HEK293 cells stably transfected with B95.8 EBV strain as a bacmid, and Drs Shankar Swaminathan and Maiké Rensing for the BSLF2/BMLF1 and BPLF1 gene constructs.

## Author Contributions

**Conceptualization:** Andrew D. Hislop, Alan B. Rickinson, Jianmin Zuo.

**Formal analysis:** Calum Forrest, Andrew D. Hislop, Jianmin Zuo.

**Funding acquisition:** Andrew D. Hislop, Alan B. Rickinson.

**Investigation:** Calum Forrest, Andrew D. Hislop, Jianmin Zuo.

**Methodology:** Calum Forrest, Andrew D. Hislop, Jianmin Zuo.

**Project administration:** Alan B. Rickinson.

**Resources:** Calum Forrest, Andrew D. Hislop, Alan B. Rickinson, Jianmin Zuo.

**Software:** Calum Forrest.

**Supervision:** Andrew D. Hislop, Alan B. Rickinson, Jianmin Zuo.

**Validation:** Calum Forrest.

**Writing – original draft:** Calum Forrest, Alan B. Rickinson, Jianmin Zuo.

**Writing – review & editing:** Calum Forrest, Andrew D. Hislop, Alan B. Rickinson, Jianmin Zuo.

## References

1. Fields BN, Knipe DM, Howley PM. *Fields virology*. 6th ed. Philadelphia: Wolters Kluwer Health/Lippincott Williams & Wilkins; 2013.
2. Arvin AM. *Human herpesviruses: biology, therapy, and immunoprophylaxis*. Cambridge; New York: Cambridge University Press; 2007.
3. Jing L, Haas J, Chong TM, Bruckner JJ, Dann GC, Dong L, et al. Cross-presentation and genome-wide screening reveal candidate T cells antigens for a herpes simplex virus type 1 vaccine. *The Journal of Clinical Investigation*. 2012; 122(2):654–73. <https://doi.org/10.1172/JCI60556> PMID: 22214845
4. Sylwester AW, Mitchell BL, Edgar JB, Taormina C, Pette C, Ruchti F, et al. Broadly targeted human cytomegalovirus-specific CD4+ and CD8+ T cells dominate the memory compartments of exposed subjects. *The Journal of Experimental Medicine*. 2005; 202(5):673–85. <https://doi.org/10.1084/jem.20050882> PMID: 16147978
5. Hutt-Fletcher LM. The Long and Complicated Relationship between Epstein-Barr Virus and Epithelial Cells. *Journal of Virology*. 2017; 91(1). <https://doi.org/10.1128/jvi.01677-16> PMID: 27795426
6. Thorley-Lawson DA. EBV Persistence-Introducing the Virus. *Current topics in microbiology and immunology*. 2015; 390(Pt 1):151–209. [https://doi.org/10.1007/978-3-319-22822-8\\_8](https://doi.org/10.1007/978-3-319-22822-8_8) PMID: 26424647
7. Hadinoto V, Shapiro M, Sun CC, Thorley-Lawson DA. The Dynamics of EBV Shedding Implicate a Central Role for Epithelial Cells in Amplifying Viral Output. *PLoS Pathogens*. 2009; 5(7):e1000496. <https://doi.org/10.1371/journal.ppat.1000496> PMID: 19578433
8. Taylor GS, Long HM, Brooks JM, Rickinson AB, Hislop AD. The Immunology of Epstein-Barr Virus Induced Disease. *Annual Review of Immunology*. 2015; 33(1):787–821. <https://doi.org/10.1146/annurev-immunol-032414-112326> PMID: 25706097.
9. Steven NM, Annels NE, Kumar A, Leese AM, Kurilla MG, Rickinson AB. Immediate Early and Early Lytic Cycle Proteins Are Frequent Targets of the Epstein-Barr Virus-induced Cytotoxic T Cell Response. *The Journal of Experimental Medicine*. 1997; 185(9):1605–18. PMID: 9151898
10. Callan MFC, Tan L, Annels N, Ogg GS, Wilson JD, O’Callaghan CA, et al. Direct Visualization of Antigen-specific CD8(+)T Cells during the Primary Immune Response to Epstein-Barr Virus In Vivo. *The Journal of Experimental Medicine*. 1998; 187(9):1395–402. PMID: 9565632
11. Hislop AD, Kuo M, Drake-Lee AB, Akbar AN, Bergler W, Hammerschmitt N, et al. Tonsillar homing of Epstein-Barr virus-specific CD8+ T cells and the virus-host balance. *Journal of Clinical Investigation*. 2005; 115(9):2546–55. <https://doi.org/10.1172/JCI24810> PMID: 16110323
12. Pudney VA, Leese AM, Rickinson AB, Hislop AD. CD8(+) immunodominance among Epstein-Barr virus lytic cycle antigens directly reflects the efficiency of antigen presentation in lytically infected cells. *The Journal of Experimental Medicine*. 2005; 201(3):349–60. <https://doi.org/10.1084/jem.20041542> PMID: 15684323
13. Hislop AD, Annels NE, Gudgeon NH, Leese AM, Rickinson AB. Epitope-specific Evolution of Human CD8(+) T Cell Responses from Primary to Persistent Phases of Epstein-Barr Virus Infection. *The Journal of Experimental Medicine*. 2002; 195(7):893–905. <https://doi.org/10.1084/jem.20011692> PMID: 11927633

14. Hislop AD, Gudgeon NH, Callan MFC, Fazou C, Hasegawa H, Salmon M, et al. EBV-Specific CD8+ T Cell Memory: Relationships Between Epitope Specificity, Cell Phenotype, and Immediate Effector Function. *The Journal of Immunology*. 2001; 167(4):2019–29. <https://doi.org/10.4049/jimmunol.167.4.2019> PMID: 11489984
15. Orlova N, Wang F, Fogg MH. Persistent Infection Drives the Development of CD8(+) T Cells Specific for Late Lytic Infection Antigens in Lymphocryptovirus-Infected Macaques and Epstein-Barr Virus-Infected Humans. *Journal of Virology*. 2011; 85(23):12821–4. <https://doi.org/10.1128/JVI.05742-11> PMID: 21917961
16. Abbott RJM, Quinn LL, Leese AM, Scholes HM, Pachnio A, Rickinson AB. CD8(+) T cell responses to lytic Epstein-Barr virus infection: late antigen specificities as subdominant components of the total response. *Journal of immunology (Baltimore, Md: 1950)*. 2013; 191(11):5398–409. <https://doi.org/10.4049/jimmunol.1301629> PMID: 24146041
17. Johnson JP, Demmer-Dieckmann M, Meo T, Hadam MR, Riethmüller G. Surface antigens of human melanoma cells defined by monoclonal antibodies. I. Biochemical characterization of two antigens found on cell lines and fresh tumors of diverse tissue origin. *European Journal of Immunology*. 1981; 11(10):825–31. <https://doi.org/10.1002/eji.1830111015> PMID: 6895502
18. Hislop AD, Rensing ME, van Leeuwen D, Pudney VA, Horst DI, Koppers-Lalic D, et al. A CD8(+) T cell immune evasion protein specific to Epstein-Barr virus and its close relatives in Old World primates. *The Journal of Experimental Medicine*. 2007; 204(8):1863–73. <https://doi.org/10.1084/jem.20070256> PMID: 17620360
19. Croft NP, Shannon-Lowe C, Bell AI, Horst D, Kremmer E, Rensing ME, et al. Stage-Specific Inhibition of MHC Class I Presentation by the Epstein-Barr Virus BNLF2a Protein during Virus Lytic Cycle. *PLoS Pathogens*. 2009; 5(6):e1000490. <https://doi.org/10.1371/journal.ppat.1000490> PMID: 19557156
20. Zuo J, Quinn LL, Tamblyn J, Thomas WA, Feederle R, Delecluse H-J, et al. The Epstein-Barr Virus-Encoded BILF1 Protein Modulates Immune Recognition of Endogenously Processed Antigen by Targeting Major Histocompatibility Complex Class I Molecules Trafficking on both the Exocytic and Endocytic Pathways. *Journal of Virology*. 2011; 85(4):1604–14. <https://doi.org/10.1128/JVI.01608-10> PMID: 21123379
21. Quinn LL, Zuo J, Abbott RJM, Shannon-Lowe C, Tierney RJ, Hislop AD, et al. Cooperation between Epstein-Barr Virus Immune Evasion Proteins Spreads Protection from CD8(+) T Cell Recognition across All Three Phases of the Lytic Cycle. *PLoS Pathogens*. 2014; 10(8):e1004322. <https://doi.org/10.1371/journal.ppat.1004322> PMID: 25144360
22. Quinn LL, Williams LR, White C, Forrest C, Zuo J, Rowe M. The Missing Link in Epstein-Barr Virus Immune Evasion: the BDLF3 Gene Induces Ubiquitination and Downregulation of Major Histocompatibility Complex Class I (MHC-I) and MHC-II. *Journal of Virology*. 2016; 90(1):356–67. <https://doi.org/10.1128/JVI.02183-15> PMID: 26468525
23. Gram AM, Oosenbrug T, Lindenbergh MFS, Bull C, Comvalius A, Dickson KJI, et al. The Epstein-Barr Virus Glycoprotein gp150 Forms an Immune-Evasive Glycan Shield at the Surface of Infected Cells. *PLoS Pathogens*. 2016; 12(4):e1005550. <https://doi.org/10.1371/journal.ppat.1005550> PMID: 27077376
24. Zuo J, Currin A, Griffin BD, Shannon-Lowe C, Thomas WA, Rensing ME, et al. The Epstein-Barr Virus G-Protein-Coupled Receptor Contributes to Immune Evasion by Targeting MHC Class I Molecules for Degradation. *PLoS Pathogens*. 2009; 5(1):e1000255. <https://doi.org/10.1371/journal.ppat.1000255> PMID: 19119421
25. Delecluse H-J, Hilsendegen T, Pich D, Zeidler R, Hammerschmidt W. Propagation and recovery of intact, infectious Epstein-Barr virus from prokaryotic to human cells. *Proceedings of the National Academy of Sciences of the United States of America*. 1998; 95(14):8245–50. PMID: 9653172
26. Ersing I, Nobre L, Wang LW, Soddy L, Ma Y, Paulo JA, et al. A Temporal Proteomic Map of Epstein-Barr Virus Lytic Replication in B Cells. *Cell Reports*. 2017; 19(7):1479–93. <https://doi.org/10.1016/j.celrep.2017.04.062> PMID: 28514666
27. Gluzman Y. SV40-transformed simian cells support the replication of early SV40 mutants. *Cell*. 1981; 23(1):175–82. [https://doi.org/10.1016/0092-8674\(81\)90282-8](https://doi.org/10.1016/0092-8674(81)90282-8). PMID: 6260373
28. Moutaftsi M, Tschärke DC, Vaughan K, Koelle DM, Stern L, Calvo-Calle M, et al. Uncovering the interplay between CD8, CD4 and antibody responses to complex pathogens. *Future Microbiology*. 2010; 5(2):221–39. <https://doi.org/10.2217/fmb.09.110> PMID: 20143946
29. Rensing ME, van Gent M, Gram AM, Hooykaas MJG, Piersma SJ, Wiertz EJHJ. Immune Evasion by Epstein-Barr Virus. *Epstein Barr Virus Volume 2: One Herpes Virus: Many Diseases*. Cham: Springer International Publishing; 2015. p. 355–81.
30. Feederle R, Kost M, Baumann M, Janz A, Drouet E, Hammerschmidt W, et al. The Epstein-Barr virus lytic program is controlled by the co-operative functions of two transactivators. *The EMBO Journal*. 2000; 19(12):3080–9. <https://doi.org/10.1093/emboj/19.12.3080> PMID: 10856251

31. Munks MW, Pinto AK, Doom CM, Hill AB. Viral Interference with Antigen Presentation Does Not Alter Acute or Chronic CD8 T Cell Immunodominance in Murine Cytomegalovirus Infection. *The Journal of Immunology*. 2007; 178(11):7235–41. <https://doi.org/10.4049/jimmunol.178.11.7235> PMID: 17513772
32. Munks MW, Gold MC, Zajac AL, Doom CM, Morello CS, Spector DH, et al. Genome-Wide Analysis Reveals a Highly Diverse CD8 T Cell Response to Murine Cytomegalovirus. *The Journal of Immunology*. 2006; 176(6):3760–6. <https://doi.org/10.4049/jimmunol.176.6.3760> PMID: 16517745
33. Gredmark-Russ S, Cheung EJ, Isaacson MK, Ploegh HL, Grotenbreg GM. The CD8 T-Cell Response against Murine Gammaherpesvirus 68 Is Directed toward a Broad Repertoire of Epitopes from both Early and Late Antigens. *Journal of Virology*. 2008; 82(24):12205–12. <https://doi.org/10.1128/JVI.01463-08> PMID: 18922872
34. Nierop GPv, Mautner J, Mitterreiter JG, Hintzen RQ, Verjans GM. Intrathecal CD8 T-cells of multiple sclerosis patients recognize lytic Epstein-Barr virus proteins. *Multiple Sclerosis Journal*. 2016; 22(3):279–91. <https://doi.org/10.1177/1352458515588581> PMID: 26041797.
35. Johannsen E, Luftig M, Chase MR, Weicksel S, Cahir-McFarland E, Illanes D, et al. Proteins of purified Epstein-Barr virus. *Proceedings of the National Academy of Sciences of the United States of America*. 2004; 101(46):16286–91. <https://doi.org/10.1073/pnas.0407320101> PMID: 15534216
36. Kiepiela P, Leslie AJ, Honeyborne I, Ramduth D, Thobakgale C, Chetty S, et al. Dominant influence of HLA-B in mediating the potential co-evolution of HIV and HLA. *Nature*. 2004; 432:769. <https://doi.org/10.1038/nature03113> PMID: 15592417
37. Schellens IM, Meiring HD, Hoof I, Spijkers SN, Poelen MCM, van Gaans-van den Brink JAM, et al. Measles Virus Epitope Presentation by HLA: Novel Insights into Epitope Selection, Dominance, and Microvariation. *Frontiers in Immunology*. 2015; 6(546). <https://doi.org/10.3389/fimmu.2015.00546> PMID: 26579122
38. Lewinsohn DA, Winata E, Swarbrick GM, Tanner KE, Cook MS, Null MD, et al. Immunodominant Tuberculosis CD8 Antigens Preferentially Restricted by HLA-B. *PLoS Pathogens*. 2007; 3(9):e127.
39. Bihl F, Frahm N, Di Giammarino L, Sidney J, John M, Yusim K, et al. Impact of HLA-B Alleles, Epitope Binding Affinity, Functional Avidity, and Viral Coinfection on the Immunodominance of Virus-Specific CTL Responses. *The Journal of Immunology*. 2006; 176(7):4094–101. <https://doi.org/10.4049/jimmunol.176.7.4094> PMID: 16547245
40. Schellens IMM, Hoof I, Meiring HD, Spijkers SNM, Poelen MCM, van Gaans-van den Brink JAM, et al. Comprehensive Analysis of the Naturally Processed Peptide Repertoire: Differences between HLA-A and B in the Immunopeptidome. *PLOS ONE*. 2015; 10(9):e0136417. <https://doi.org/10.1371/journal.pone.0136417> PMID: 26375851
41. Brooks JM, Long HM, Tierney RJ, Shannon-Lowe C, Leese AM, Fitzpatrick M, et al. Early T Cell Recognition of B Cells following Epstein-Barr Virus Infection: Identifying Potential Targets for Prophylactic Vaccination. *PLoS Pathogens*. 2016; 12(4):e1005549. <https://doi.org/10.1371/journal.ppat.1005549> PMID: 27096949
42. Griffin BD, Gram AM, Mulder A, Van Leeuwen D, Claas FHJ, Wang F, et al. Epstein-Barr virus BILF1 evolved to downregulate cell surface display of a wide range of HLA class I molecules through their cytoplasmic tail. *Journal of immunology (Baltimore, Md: 1950)*. 2013; 190(4):1672–84.
43. Niens M, Jarrett RF, Hepkema B, Nolte IM, Diepstra A, Platteel M, et al. HLA-A\*02 is associated with a reduced risk and HLA-A\*01 with an increased risk of developing EBV+ Hodgkin lymphoma. *Blood*. 2007; 110(9):3310–5. <https://doi.org/10.1182/blood-2007-05-086934> PMID: 17630352
44. Hjalgrim H, Rostgaard K, Johnson PCD, Lake A, Shield L, Little A-M, et al. HLA-A alleles and infectious mononucleosis suggest a critical role for cytotoxic T-cell response in EBV-related Hodgkin lymphoma. *Proceedings of the National Academy of Sciences*. 2010; 107(14):6400–5. <https://doi.org/10.1073/pnas.0915054107> PMID: 20308568
45. Huang X, Kushekhar K, Nolte I, Kooistra W, Visser L, Bouwman I, et al. HLA Associations in Classical Hodgkin Lymphoma: EBV Status Matters. *PLOS ONE*. 2012; 7(7):e39986. <https://doi.org/10.1371/journal.pone.0039986> PMID: 22808081
46. Jones K, Wockner L, Brennan RM, Keane C, Chattopadhyay PK, Roederer M, et al. The impact of HLA class I and EBV latency-II antigen-specific CD8+ T cells on the pathogenesis of EBV+ Hodgkin lymphoma. *Clinical & Experimental Immunology*. 2016; 183(2):206–20. <https://doi.org/10.1111/cei.12716> PMID: 26422112
47. Brennan RM, Burrows SR. A mechanism for the HLA-A\*01-associated risk for EBV+ Hodgkin lymphoma and infectious mononucleosis. *Blood*. 2008; 112(6):2589–90. <https://doi.org/10.1182/blood-2008-06-162883> PMID: 18779413
48. Woodberry T, Suscovich Todd J, Henry Leah M, Davis Jennifer K, Frahm N, Walker Bruce D, et al. Differential Targeting and Shifts in the Immunodominance of Epstein-Barr Virus-Specific CD8 and CD4 T



- Cell Responses during Acute and Persistent Infection. *The Journal of Infectious Diseases*. 2005; 192(9):1513–24. <https://doi.org/10.1086/491741> PMID: 16206065
49. Tsai K, Thikmyanova N, Wojcechowskyj JA, Delecluse H-J, Lieberman PM. EBV Tegument Protein BNRF1 Disrupts DAXX-ATRX to Activate Viral Early Gene Transcription. *PLoS Pathogens*. 2011; 7(11):e1002376. <https://doi.org/10.1371/journal.ppat.1002376> PMID: 22102817
  50. Tierney RJ, Shannon-Lowe CD, Fitzsimmons L, Bell AI, Rowe M. Unexpected patterns of Epstein-Barr virus transcription revealed by a High throughput PCR array for absolute quantification of viral mRNA. *Virology*. 2015; 474:117–30. <https://doi.org/10.1016/j.virol.2014.10.030>.
  51. Strong MJ, Laskow T, Nakhoul H, Blanchard E, Liu Y, Wang X, et al. Latent Expression of the Epstein-Barr Virus (EBV)-Encoded Major Histocompatibility Complex Class I TAP Inhibitor, BNLF2a, in EBV-Positive Gastric Carcinomas. *Journal of Virology*. 2015; 89(19):10110–4. <https://doi.org/10.1128/JVI.01110-15> PMID: 26178981
  52. Hong GK, Gulley ML, Feng W-H, Delecluse H-J, Holley-Guthrie E, Kenney SC. Epstein-Barr Virus Lytic Infection Contributes to Lymphoproliferative Disease in a SCID Mouse Model. *Journal of Virology*. 2005; 79(22):13993–4003. <https://doi.org/10.1128/JVI.79.22.13993-14003.2005> PMID: 16254335
  53. Bollard CM, Rooney CM, Heslop HE. T-cell therapy in the treatment of post-transplant lymphoproliferative disease. *Nature reviews Clinical oncology*. 2012; 9(9):510–9. <https://doi.org/10.1038/nrclinonc.2012.111> PMID: 22801669
  54. Horst D, Favalaro V, Vilardi F, van Leeuwen HC, Garstka MA, Hislop AD, et al. EBV Protein BNLF2a Exploits Host Tail-Anchored Protein Integration Machinery To Inhibit TAP. *The Journal of Immunology*. 2011; 186(6):3594–605. <https://doi.org/10.4049/jimmunol.1002656> PMID: 21296983
  55. Sallusto F, Lanzavecchia A. Efficient presentation of soluble antigen by cultured human dendritic cells is maintained by granulocyte/macrophage colony-stimulating factor plus interleukin 4 and downregulated by tumor necrosis factor alpha. *The Journal of Experimental Medicine*. 1994; 179(4):1109–18. <https://doi.org/10.1084/jem.179.4.1109> PMID: 8145033
  56. Napolitani G, Rinaldi A, Berton F, Sallusto F, Lanzavecchia A. Selected TLR agonist combinations synergistically trigger a T(H)1 polarizing program in dendritic cells. *Nature immunology*. 2005; 6(8):769–76. <https://doi.org/10.1038/ni1223> PMID: 15995707
  57. Chiang M-C, Tullett KM, Lee YS, Idris A, Ding Y, McDonald KJ, et al. Differential uptake and cross-presentation of soluble and necrotic cell antigen by human DC subsets. *European Journal of Immunology*. 2016; 46(2):329–39. <https://doi.org/10.1002/eji.201546023> PMID: 26542182
  58. Li M, Davey GM, Sutherland RM, Kurts C, Lew AM, Hirst C, et al. Cell-Associated Ovalbumin Is Cross-Presented Much More Efficiently than Soluble Ovalbumin In Vivo. *The Journal of Immunology*. 2001; 166(10):6099–103. <https://doi.org/10.4049/jimmunol.166.10.6099> PMID: 11342628
  59. Alloati A, Kotsias F, Magalhaes JG, Amigorena S. Dendritic cell maturation and cross-presentation: timing matters! *Immunological Reviews*. 2016; 272(1):97–108. <https://doi.org/10.1111/imr.12432> PMID: 27319345
  60. Adhikary D, Behrends U, Moosmann A, Witter K, Bornkamm GW, Mautner J. Control of Epstein-Barr virus infection in vitro by T helper cells specific for virion glycoproteins. *The Journal of Experimental Medicine*. 2006; 203(4):995–1006. <https://doi.org/10.1084/jem.20051287> PMID: 16549597