

# UNIVERSITY OF BIRMINGHAM

## Research at Birmingham

### Corrigendum

Li, Lili; Li, Chen; Mao, Haitao; Du, Zhenfang; Chan, Wai; Murray, Paul; Luo, Bing; Chan, Anthony Tc; Mok, Tony Sk; Chan, Francis Kl; Ambinder, Richard F; Tao, Qian

DOI:

[10.1038/srep34435](https://doi.org/10.1038/srep34435)

License:

Creative Commons: Attribution (CC BY)

*Document Version*

Publisher's PDF, also known as Version of record

*Citation for published version (Harvard):*

Li, L, Li, C, Mao, H, Du, Z, Chan, WY, Murray, P, Luo, B, Chan, AT, Mok, TS, Chan, FK, Ambinder, RF & Tao, Q 2016, 'Corrigendum: Epigenetic inactivation of the CpG demethylase TET1 as a DNA methylation feedback loop in human cancers', *Scientific Reports*, vol. 6, 34435. <https://doi.org/10.1038/srep34435>

[Link to publication on Research at Birmingham portal](#)

#### **Publisher Rights Statement:**

First published in *Scientific Reports* 6th October 2018  
<https://doi.org/10.1038/srep34435>

#### **General rights**

Unless a licence is specified above, all rights (including copyright and moral rights) in this document are retained by the authors and/or the copyright holders. The express permission of the copyright holder must be obtained for any use of this material other than for purposes permitted by law.

- Users may freely distribute the URL that is used to identify this publication.
- Users may download and/or print one copy of the publication from the University of Birmingham research portal for the purpose of private study or non-commercial research.
- User may use extracts from the document in line with the concept of 'fair dealing' under the Copyright, Designs and Patents Act 1988 (?)
- Users may not further distribute the material nor use it for the purposes of commercial gain.

Where a licence is displayed above, please note the terms and conditions of the licence govern your use of this document.

When citing, please reference the published version.

#### **Take down policy**

While the University of Birmingham exercises care and attention in making items available there are rare occasions when an item has been uploaded in error or has been deemed to be commercially or otherwise sensitive.

If you believe that this is the case for this document, please contact [UBIRA@lists.bham.ac.uk](mailto:UBIRA@lists.bham.ac.uk) providing details and we will remove access to the work immediately and investigate.

# SCIENTIFIC REPORTS

OPEN

## Corrigendum: Epigenetic inactivation of the CpG demethylase TET1 as a DNA methylation feedback loop in human cancers

Lili Li, Chen Li, Haitao Mao, Zhenfang Du, Wai Yee Chan, Paul Murray, Bing Luo, Anthony TC Chan, Tony SK Mok, Francis KL Chan, Richard F. Ambinder & Qian Tao

*Scientific Reports* 6:26591; doi: 10.1038/srep26591; published online 26 May 2016; updated on 06 October 2016

This Article contains errors in Figure 2D where the Hodgkin lymphoma ‘TET1-MSP’ methylated and unmethylated MSP bands are incorrect. The correct Figure 2D appears below as Figure 1.

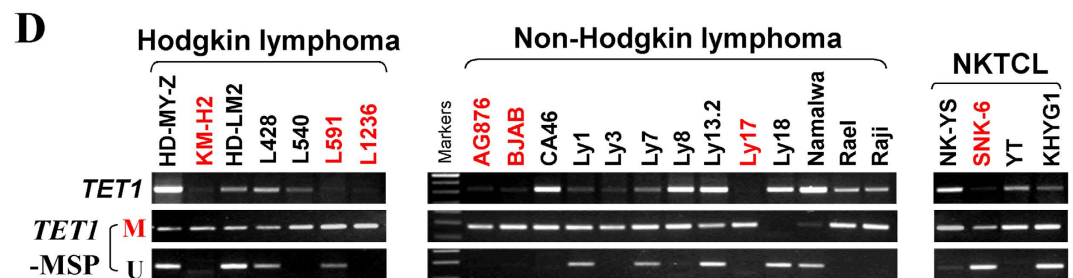



Figure 1.

 This work is licensed under a Creative Commons Attribution 4.0 International License. The images or other third party material in this article are included in the article's Creative Commons license, unless indicated otherwise in the credit line; if the material is not included under the Creative Commons license, users will need to obtain permission from the license holder to reproduce the material. To view a copy of this license, visit <http://creativecommons.org/licenses/by/4.0/>

© The Author(s) 2016