

# UNIVERSITY OF BIRMINGHAM

## Research at Birmingham

### Human intrahepatic tregs are functional, require IL-2 from effector cells for survival and are susceptible to fas ligand mediated apoptosis

Chen, Yung-Yi; Jeffery, Hannah; Hunter, Stuart; Bhogal, Ricky; Birtwistle, Jane; Kaur Braitch, Manjit; Roberts, Sheree; Ming, Mikaela; Hannah, Jack; Thomas, Clare; Adali, Gupse; Hubscher, Stefan; Syn, Wing-Kin; Afford, Simon; Lalor, Patricia; Adams, David; Oo, Ye Htun

DOI:

[10.1002/hep.28517](https://doi.org/10.1002/hep.28517)

License:

Creative Commons: Attribution (CC BY)

#### Document Version

Publisher's PDF, also known as Version of record

#### Citation for published version (Harvard):

Chen, Y-Y, Jeffery, HC, Hunter, S, Bhogal, R, Birtwistle, J, Kaur Braitch, M, Roberts, S, Ming, M, Hannah, J, Thomas, C, Adali, G, Hubscher, S, Syn, W-K, Afford, S, Lalor, PF, Adams, DH & Oo, YH 2016, 'Human intrahepatic tregs are functional, require IL-2 from effector cells for survival and are susceptible to fas ligand mediated apoptosis', *Hepatology*, vol. 64, no. 1, pp. 138–150. <https://doi.org/10.1002/hep.28517>

[Link to publication on Research at Birmingham portal](#)

#### General rights

Unless a licence is specified above, all rights (including copyright and moral rights) in this document are retained by the authors and/or the copyright holders. The express permission of the copyright holder must be obtained for any use of this material other than for purposes permitted by law.

- Users may freely distribute the URL that is used to identify this publication.
- Users may download and/or print one copy of the publication from the University of Birmingham research portal for the purpose of private study or non-commercial research.
- User may use extracts from the document in line with the concept of 'fair dealing' under the Copyright, Designs and Patents Act 1988 (?)
- Users may not further distribute the material nor use it for the purposes of commercial gain.

Where a licence is displayed above, please note the terms and conditions of the licence govern your use of this document.

When citing, please reference the published version.

#### Take down policy

While the University of Birmingham exercises care and attention in making items available there are rare occasions when an item has been uploaded in error or has been deemed to be commercially or otherwise sensitive.

If you believe that this is the case for this document, please contact [UBIRA@lists.bham.ac.uk](mailto:UBIRA@lists.bham.ac.uk) providing details and we will remove access to the work immediately and investigate.

Download date: 01. Feb. 2019

# Human Intrahepatic Regulatory T Cells Are Functional, Require IL-2 From Effector Cells for Survival, and Are Susceptible to Fas Ligand-Mediated Apoptosis

Yung-Yi Chen,<sup>1,2\*</sup> Hannah C. Jeffery,<sup>1,2\*</sup> Stuart Hunter,<sup>1</sup> Ricky Bhogal,<sup>1</sup> Jane Birtwistle,<sup>3</sup> Manjit Kaur Braitch,<sup>1</sup> Sheree Roberts,<sup>1</sup> Mikaela Ming,<sup>1</sup> Jack Hannah,<sup>1</sup> Clare Thomas,<sup>1</sup> Gupse Adali,<sup>1</sup> Stefan G. Hübscher,<sup>4</sup> Wing-Kin Syn,<sup>5,6</sup> Simon Afford,<sup>1,2</sup> Patricia F. Lalor,<sup>1,2</sup> David H. Adams,<sup>1,2</sup> and Ye H. Oo<sup>1,2</sup>

Regulatory T cells (T<sub>reg</sub>) suppress T effector cell proliferation and maintain immune homeostasis. Autoimmune liver diseases persist despite high frequencies of T<sub>reg</sub> in the liver, suggesting that the local hepatic microenvironment might affect T<sub>reg</sub> stability, survival, and function. We hypothesized that interactions between T<sub>reg</sub> and endothelial cells during recruitment and then with epithelial cells within the liver affect T<sub>reg</sub> stability, survival, and function. To model this, we explored the function of T<sub>reg</sub> after migration through human hepatic sinusoidal-endothelium (postendothelial migrated T<sub>reg</sub> [PEM T<sub>reg</sub>]) and the effect of subsequent interactions with cholangiocytes and local proinflammatory cytokines on survival and stability of T<sub>reg</sub>. Our findings suggest that the intrahepatic microenvironment is highly enriched with proinflammatory cytokines but deficient in the T<sub>reg</sub> survival cytokine interleukin (IL)-2. Migration through endothelium into a model mimicking the inflamed liver microenvironment did not affect T<sub>reg</sub> stability; however, functional capacity was reduced. Furthermore, the addition of exogenous IL-2 enhanced PEM T<sub>reg</sub> phosphorylated STAT5 signaling compared with PEMCD8. CD4 and CD8 T cells are the main source of IL-2 in the inflamed liver. Liver-infiltrating T<sub>reg</sub> reside close to bile ducts and coculture with cholangiocytes or their supernatants induced preferential apoptosis of T<sub>reg</sub> compared with CD8 effector cells. T<sub>reg</sub> from diseased livers expressed high levels of CD95, and their apoptosis was inhibited by IL-2 or blockade of CD95. **Conclusion:** Recruitment through endothelium does not impair T<sub>reg</sub> stability, but a proinflammatory microenvironment deficient in IL-2 leads to impaired function and increased susceptibility of T<sub>reg</sub> to epithelial cell-induced Fas-mediated apoptosis. These results provide a mechanism to explain T<sub>reg</sub> dysfunction in inflamed tissues and suggest that IL-2 supplementation, particularly if used in conjunction with T<sub>reg</sub> therapy, could restore immune homeostasis in inflammatory and autoimmune liver disease. (HEPATOLOGY 2016; 00:000–000)

**C**D4<sup>+</sup>CD25<sup>+</sup> CD127<sup>low</sup> FOXP3<sup>+</sup> regulatory T cells (T<sub>reg</sub>) maintain peripheral self-tolerance by suppressing T effector cell proliferation and function.<sup>(1,2)</sup> T<sub>reg</sub> depletion or dysfunction leads to autoimmunity in mice and IPEX syndrome in humans. T<sub>reg</sub> dysfunction or an imbalance between T<sub>reg</sub> and effector cells in tissue will determine the outcome of inflammation.<sup>(3,4)</sup>

*Abbreviations:* ANOVA, analysis of variance; BEC, biliary epithelial cell; ELISA, enzyme-linked immunosorbent assay; FASL, Fas ligand; IL, interleukin; HSEC, hepatic sinusoidal endothelial cell; IFN- $\gamma$ , interferon- $\gamma$ ; LIT<sub>reg</sub>, liver-infiltrating regulatory T cell; PEM T<sub>reg</sub>, postendothelial migrated T<sub>reg</sub>; SEM, standard error of the mean; Th 1, T helper 1; Th 17, T helper 17; TNF- $\alpha$ , tumor necrosis factor  $\alpha$ ; T<sub>reg</sub>, regulatory T cell.

Received May 7, 2015; accepted February 25, 2016.

Additional Supporting Information may be found at [onlinelibrary.wiley.com/doi/10.1002/hep.28517/supinfo](http://onlinelibrary.wiley.com/doi/10.1002/hep.28517/supinfo).

Ye Hoon Oo is funded by the Medical Research Council Intermediate Fellowship Programme (Clinician Scientist Award, G1002552) and also received support from the NIHR Birmingham Liver Biomedical Research Unit, Queen Elizabeth Hospital Birmingham Charity, and Bowel Disease Research Foundation.

\*These authors contributed equally to this work.

Copyright © 2016 The Authors. HEPATOLOGY published by Wiley Periodicals, Inc., on behalf of the American Association for the Study of Liver Diseases. This is an open access article under the terms of the [Creative Commons Attribution](http://creativecommons.org/licenses/by/4.0/) License, which permits use, distribution and reproduction in any medium, provided the original work is properly cited.

View this article online at [wileyonlinelibrary.com](http://wileyonlinelibrary.com).

DOI 10.1002/hep.28517

Potential conflict of interest: Nothing to report.

Intrahepatic  $T_{reg}$  increase in parallel with effector T cells during chronic hepatitis<sup>(5)</sup> demonstrates that the presence of  $T_{reg}$  in the liver does not prevent ongoing hepatic inflammation. Whether this is due to dysfunctional  $T_{reg}$  or overwhelming effector responses is not known.

Understanding the fate of  $T_{reg}$  in the inflamed liver is crucial, because  $T_{reg}$  recruited to the liver from blood via hepatic sinusoids<sup>(6)</sup> enter the hepatic microenvironment enriched with proinflammatory cytokines. The process of recruitment and/or exposure to this inflammatory microenvironment could affect  $T_{reg}$  stability, survival, and function. Recruitment through endothelium can affect the differentiation and activation of various leukocyte subsets, and  $T_{reg}$  can switch toward a T helper 1 (Th 1) or T helper 17 (Th 17) lineage in an inflammatory environment.<sup>(7,8)</sup> Furthermore, intrahepatic lymphocytes are removed by activation-induced cell death triggered by receptors such as CD95 (APO-1/Fas), leading to resolution of inflammation. Thus, differential susceptibility to apoptosis could affect the balance of  $T_{reg}$  and T effector cells at inflammatory sites.<sup>(9,10)</sup>  $T_{reg}$  are highly sensitive to CD95-mediated apoptosis,<sup>(11)</sup> and interleukin (IL)-2-dependent phosphorylation of STAT5 is crucial for their proliferation, differentiation, and survival.<sup>(12)</sup> We reported previously that many intrahepatic  $T_{reg}$  lack evidence of STAT5 phosphorylation, suggesting that the inflammatory liver microenvironment is hostile to  $T_{reg}$  survival and function.<sup>(13)</sup>

In the present study, we report that recruitment through endothelium into a model of the inflamed liver microenvironment reduces the suppressive capacity of  $T_{reg}$  and a lack of local IL-2 enhances their susceptibility to Fas-mediated apoptosis induced by epithelial cells. These findings support the therapeutic potential of IL-2 therapy to restore local  $T_{reg}$  function in inflammatory liver diseases.

## Materials and Methods

### TISSUES AND BLOOD

Venous blood was obtained from healthy volunteers or patients with hemochromatosis who were admitted to the Liver Unit at the Queen Elizabeth Hospital, Birmingham, UK<sup>(5)</sup> (Local Research Ethics Committee reference no. 04/Q2708/41) and liver tissues from patients undergoing liver transplantation for inflammatory liver diseases, including primary biliary cirrhosis, primary sclerosing cholangitis, alcoholic liver disease, and autoimmune hepatitis. Normal liver was obtained from donor liver tissue surplus to clinical requirements (Local Research Ethics Committee reference no. 06/Q2708/11, 98/CA5192).

### ISOLATION OF LIVER INFILTRATING LYMPHOCYTES, BILIARY EPITHELIAL CELLS, AND PRIMARY HUMAN HEPATIC SINUSOIDAL ENDOTHELIAL CELLS

Liver-infiltrating lymphocytes,<sup>(5)</sup> biliary epithelial cells (BECs),<sup>(14)</sup> and hepatic sinusoidal endothelial cells (HSECs)<sup>(15)</sup> were prepared and isolated from fresh liver tissue as described previously.<sup>(13)</sup>

### POSTENDOTHELIAL TRANSMIGRATED $T_{reg}$ AND $CD8^+$ T CELL FUNCTIONAL ASSAYS

HSECs were plated and grown on six-well collagen I precoated Transwell inserts (3  $\mu$ m; Greiner Bio-One) until confluent. Cells were then stimulated with 10 ng/mL interferon- $\gamma$  (IFN- $\gamma$ ) and 10 ng/mL tumor necrosis factor  $\alpha$  (TNF- $\alpha$ ) (both Peprotech) for 24 hours to mimic the inflamed environment. After washing, the lower chamber

#### ARTICLE INFORMATION:

From the <sup>1</sup>Centre for Liver Research and NIHR Birmingham Liver Biomedical Research Unit, University of Birmingham, Birmingham, United Kingdom; <sup>2</sup>Institute of Immunology and Immunotherapy, University of Birmingham, Birmingham, United Kingdom; <sup>3</sup>Clinical Immunology Department, University Hospital Birmingham NHS Foundation Trust, Birmingham, United Kingdom; <sup>4</sup>Department of Cellular Pathology, Queen Elizabeth Hospital Birmingham, United Kingdom; <sup>5</sup>The Institute of Hepatology, London, United Kingdom; <sup>6</sup>Division of Gastroenterology and Hepatology, The Medical University of South Carolina, Charleston, South Carolina, USA.

#### ADDRESS CORRESPONDENCE AND REPRINT REQUESTS TO:

Ye Htun Oo, M.B.B.S., M.R.C.P., Ph.D.  
Centre for Liver Research and NIHR Birmingham Liver Biomedical  
Research Unit  
University of Birmingham

Vincent Drive, Edgbaston, Birmingham, B15 2TT, UK  
E-mail: y.h.oo@bham.ac.uk  
Tel: +44-121-415-8700  
Fax: +44-121-415-8701

was filled with either Roswell Park Memorial Institute 1640 (RPMI-1640) medium (Gibco) supplemented with 0.05% bovine serum albumin or inflamed liver conditioned supernatant prepared by incubating 1 g of tissue in 4 mL serum-free RPMI 1640 for 24 hours. The supernatant was then centrifuged and filtered (0.22  $\mu\text{m}$ -pore). Freshly isolated  $T_{\text{reg}}$  or  $CD8^+$  T cells were then added to the upper chamber of the Transwell insert in 0.05% bovine serum albumin/RPMI-1640 and allowed to migrate across the endothelial cell monolayer into the lower chamber for 24 hours. The postendothelial transmigrated  $T_{\text{reg}}$  (PEM  $T_{\text{reg}}$ ) or postendothelial transmigrated  $CD8^+$  T (PEM CD8) cells were collected for experiments ( $T_{\text{reg}}$  suppression assay, biliary coculture assay, phosphorylated STAT5 assay, and  $T_{\text{reg}}$  plasticity assay).

## PEM $T_{\text{reg}}$ AND CD8 APOPTOSIS ASSAY

BECs were seeded into 24-well collagen I precoated plates, grown until confluent, and stimulated with 10 ng/mL IFN- $\gamma$  and 10 ng/mL TNF- $\alpha$  (Peprotech) for 24 hours. PEM  $T_{\text{reg}}$  or PEM CD8 cells were cocultured with these BECs or with BEC supernatant for 24 hours, and apoptosis was analyzed by way of flow cytometric staining using Annexin and 7AAD (BD Pharmingen).

## STATISTICAL ANALYSIS

Differences between treatments were evaluated by way of Student *t* test or one-way analysis of variance (ANOVA), followed by Bonferroni multiple comparison test using GraphPad Prism version 6.0 (GraphPad Software). *P* < 0.05 was considered statistically significant. Data are presented as the mean  $\pm$  standard error of the mean (SEM).

See the [Supporting Information](#) for details regarding immunohistochemistry, confocal microscopy, enzyme-linked immunosorbent assay (ELISA), flow cytometry, isolation of peripheral blood  $T_{\text{reg}}$  and CD8 and assays of  $T_{\text{reg}}$  function, plasticity, and response to IL-2.

## Results

### FRESHLY ISOLATED HUMAN LIVER INFILTRATING $T_{\text{reg}}$ ARE ACTIVATED, NONEXHAUSTED, MEMORY CELLS

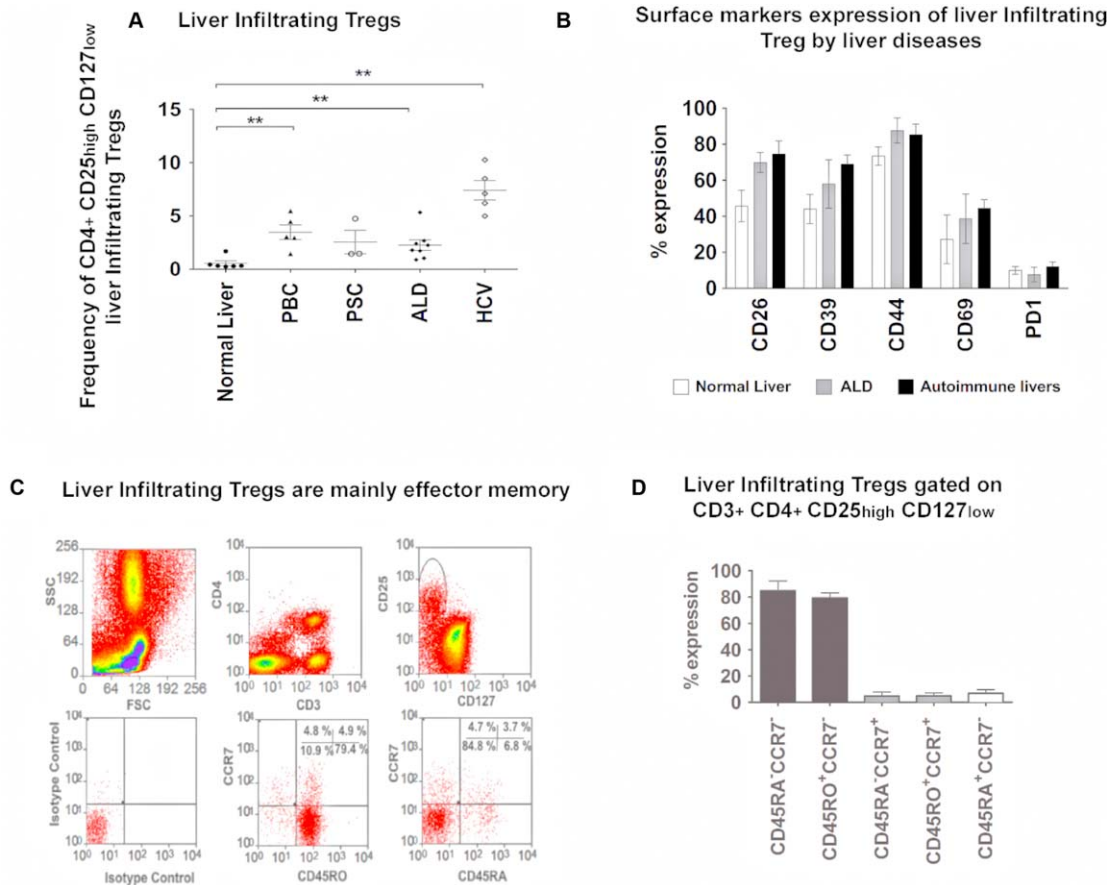
We compared the frequency and surface phenotype of liver-infiltrating  $CD4^+CD25^{\text{high}}CD127^{\text{low}}$   $T_{\text{reg}}$  (LIT $_{\text{reg}}$ )

in different inflammatory liver diseases with normal liver tissue (Fig. 1A,B) and with liver-infiltrating CD8 cells ([Supporting Fig. S1C](#)).  $T_{\text{reg}}$  isolated from normal and diseased livers differed in their expression of  $T_{\text{reg}}$ -associated functional surface receptors CD26, CD39, and CD69 (Fig. 1B). Very low expression of PD1 was observed on LIT $_{\text{reg}}$  in both normal and diseased patients ( $9 \pm 5\%$  versus  $9.5 \pm 2\%$ ) (Fig. 1B) but high levels of CD44 were observed on LIT $_{\text{reg}}$  ( $79 \pm 6\%$  versus  $87 \pm 5\%$ ) and liver-infiltrating CD8 cells ( $75 \pm 9\%$  versus  $90 \pm 4\%$ ) ([Supporting Fig. S1C](#)). LIT $_{\text{reg}}$  exhibited a memory phenotype:  $CD45RO^{\text{high}}CD45RA^{\text{low}}$  and  $CCR7^{\text{low}}$  ( $85 \pm 7\%$ ) and inflamed liver tissue contained small populations of central memory  $CD45RA^{\text{neg}}CCR7^{\text{pos}}$  ( $4.7 \pm 3\%$ ) and tissue resident memory  $CD45RA^{\text{pos}}CCR7^{\text{neg}}$  ( $7 \pm 3\%$ ) LIT $_{\text{reg}}$  (Fig. 1C,D).

### PROINFLAMMATORY CYTOKINES ARE ELEVATED IN THE INFLAMED LIVER ENVIRONMENT, BUT THIS DOES NOT ALTER INTRAHEPATIC $T_{\text{reg}}$ STABILITY

We explored the intrahepatic microenvironment by measuring proinflammatory cytokines in supernatants from inflamed human liver tissue. Diseased liver supernatants contained higher concentrations of IL-6 ( $8960 \pm 4257$  pg/mL), IL-8 ( $24,033 \pm 16,589$  pg/mL), IL-12 ( $61 \pm 30$  pg/mL), IFN- $\gamma$  ( $32 \pm 7$  pg/mL), and IL-1 $\beta$  ( $363 \pm 88$  pg/mL) compared with normal liver supernatants (Fig. 2A).

We then examined the stability of intrahepatic  $T_{\text{reg}}$  in the hepatic microenvironment by modeling recruitment and intrahepatic conditions in vitro. Blood  $T_{\text{reg}}$  that had transmigrated across TNF- $\alpha$  and IFN- $\gamma$ -stimulated HSECs had a phenotype similar to the LIT $_{\text{reg}}$  phenotype, allowing us to use them to model the inflamed liver in vitro (Fig. 2B). PEM  $T_{\text{reg}}$  were migrated across stimulated HSECs into either control media or supernatants from inflamed liver tissue cultures ([Supporting Fig. S5](#)) and secretion of IL-10, IL-17, and IFN- $\gamma$  by  $T_{\text{reg}}$  measured 24 hours postmigration (Fig. 2C) and expression of FOXP3, ROR, and Tbet analyzed up to 3 days (Fig. 2D, [Supporting Fig. S2](#)). A subset of LIT $_{\text{reg}}$  expressed CD161 (20%) or IL-6 receptor (27%). We did not detect AhR expression (Fig. 2E).



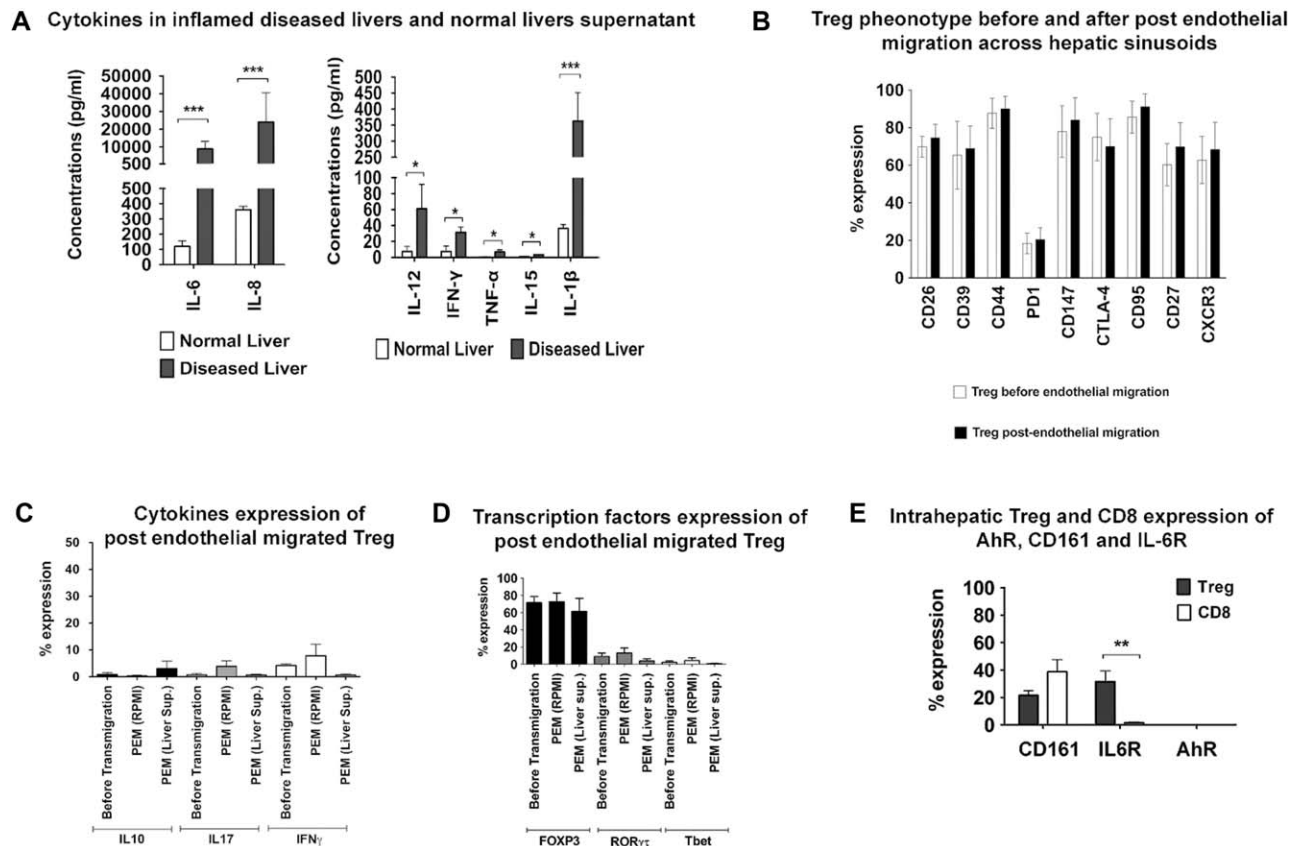
**FIG. 1.** Frequency and phenotype of intrahepatic T<sub>reg</sub> in inflamed human livers. Freshly isolated LIT<sub>reg</sub> from human explanted livers were phenotyped by flow cytometry. LIT<sub>reg</sub> were gated as CD4<sup>+</sup>CD25<sup>high</sup>CD127<sup>low</sup>. (A) Frequency of LIT<sub>reg</sub> in normal livers and different diseased livers. (B) Surface marker expressions of LIT<sub>reg</sub> from normal livers, alcoholic liver disease livers, and autoimmune disease livers (see Supporting Fig. S1C for surface marker expressions of LICD8 cells from different diseased livers). LIT<sub>reg</sub> (defined as CD3<sup>+</sup>CD4<sup>+</sup>CD127<sup>low</sup>CD25<sup>high</sup>) were screened for expression of surface markers, CD26, CD39, CD44, CD69, and PD1. Data are presented as the mean  $\pm$  SEM (n = 6; one-way ANOVA followed by Bonferroni multiple comparison test). \*\*P < 0.05. (C, D) Maturation status of LIT<sub>reg</sub>. Frequencies of CD45RA<sup>-</sup> memory (CD45RA<sup>-</sup>CCR7<sup>-</sup>), CD45RO<sup>+</sup> memory (CD45RO<sup>+</sup>CCR7<sup>-</sup>), central memory (CD45RA<sup>-</sup>CCR7<sup>+</sup>), and naïve (CD45RA<sup>+</sup>CCR7<sup>+</sup>) LIT<sub>reg</sub> populations were determined by way of flow cytometry. Representative dot plots (C) and summary data (D) of LIT<sub>reg</sub> maturation status are shown. Data are presented as the mean  $\pm$  SEM (n = 6).

## PEM T<sub>reg</sub> REMAIN FUNCTIONALLY SUPPRESSIVE

After migration across endothelium into inflamed tissue supernatants, T<sub>reg</sub> maintained their ability to suppress the proliferation of T effector cells (Fig. 3A, Supporting Fig. S5A). Freshly isolated T<sub>reg</sub> were functionally suppressive (T<sub>reg</sub>/T effector cell ratio = 1:8) before any cell contact (Fig. 3Ai) and after contact with endothelium (T<sub>reg</sub>/T effector cell ratio = 1:4) but before transmigration (Fig. 3Aii). After transmigration across TNF- $\alpha$  and IFN- $\gamma$ -stimulated HSECs into control media (Fig. 3Aiii), T<sub>reg</sub> had a reduced suppres-

sive capacity at a 1:2 ratio. This was reduced further after migration into inflamed liver supernatant with suppression only seen at a 1:1 cell ratio (Fig. 3Aiv).

LIT<sub>reg</sub> expressed cell surface receptors associated with suppressive function (Fig. 3B,C) including CTLA-4 and CD147,<sup>(16)</sup> whereas factors associated with cytolytic activity, granzyme-B, and perforin were expressed at higher levels on LICD8 T cells compared with LIT<sub>reg</sub> (53% versus 8% and 27% versus 8%). There were no significant differences in the expression of LAG-3 (21% versus 8%), CD137 (13% versus 4%), and TIM-3 (8% versus 4%) between LIT<sub>reg</sub> and LICD8 (Fig. 3B,C).



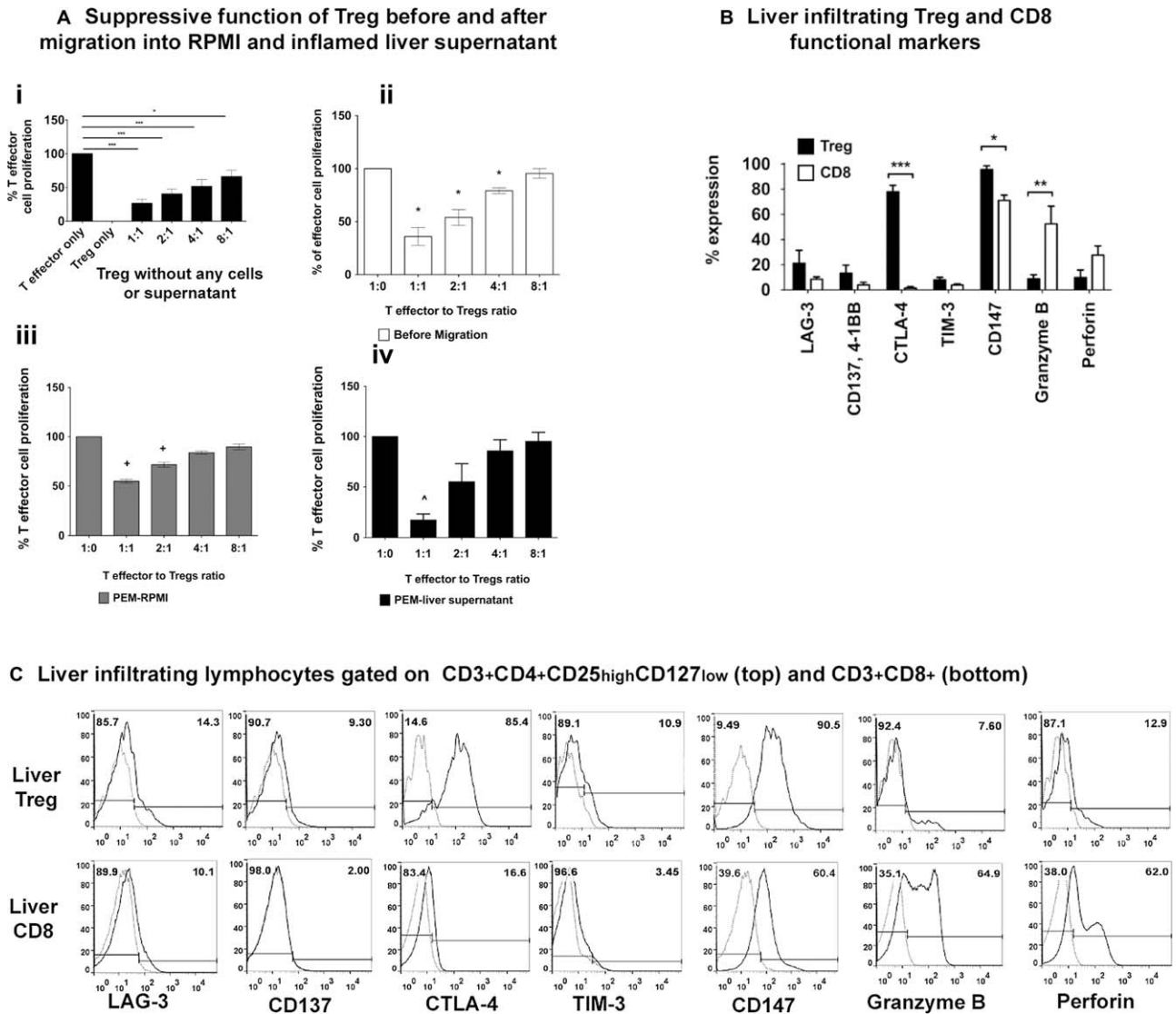
**FIG. 2.** Intrahepatic microenvironment is enriched with proinflammatory cytokines and PEM  $T_{reg}$  are not plastic to other T cell lineages. (A) Cytokine profiles of supernatants collected from normal and diseased livers. Tissue from normal or diseased liver was cultured for 24 hours in RPMI-1640 medium at 1 g/mL, and the concentrations of cytokines IL-6, IL-8, IL-12, IL-15, IFN- $\gamma$ , TNF- $\alpha$ , and IL-1 $\beta$  were measured using a Bio-Plex Pro bead-based multiplex kit. Data are presented as the mean  $\pm$  SEM ( $n = 6$ ; one-way ANOVA with Bonferroni multiple comparison test).  $*P < 0.05$ . (B-D)  $T_{reg}$  phenotype before and after migration across stimulated hepatic sinusoidal endothelium.  $T_{reg}$  freshly isolated from peripheral blood were transmigrated through monolayers of IFN- $\gamma$ - and TNF- $\alpha$ -stimulated hepatic sinusoidal endothelial cells into either RPMI-1640 medium (control) or liver supernatant and phenotyped by way of flow cytometry. Expression of markers including CD26, CD39, CD44, PD1, CD147, CTLA-4, CD95, CD27, and CXCR3 before and after transendothelial migration into RPMI-1640 medium are shown (B). Data are presented as the mean  $\pm$  SEM ( $n = 6$ ; one-way ANOVA followed by Bonferroni multiple comparison test).  $*P < 0.05$ . Expressions of cytokines including IL-10, IL-17, and IFN- $\gamma$  at 24 hours (C) and transcription factors FOXP3, ROR, and Tbet at 3 days (D) were measured before and after migration into RPMI-1640 medium or liver supernatant (see Supporting Fig. S2 for expression of transcription factors up to 3 days of culture in inflamed liver supernatants). Data are presented as the mean  $\pm$  SEM ( $n = 4$ ; one-way ANOVA).  $*P \leq 0.05$ . (E) Expression of CD161, IL-6 receptor, and intracellular AhR by LIT $_{reg}$  directly ex vivo was shown. Data are presented as the mean  $\pm$  SEM ( $n = 6$ ; one-way ANOVA followed by Bonferroni multiple comparison test).  $*P < 0.05$ ;  $**P < 0.01$ ;  $***P < 0.005$

## LIVER RESIDENT $T_{reg}$ AND CD8 RESIDE AROUND Fas LIGAND (FASL)-POSITIVE BILE DUCTS

FOXP3<sup>+</sup> LIT $_{reg}$  were detected throughout the hepatic parenchyma, fibrous septa, and sinusoids as well as close to bile ducts in portal tracts (Fig. 4A-C) in inflamed liver tissue. CD95 ligand (FASL/CD178) was detected on CK19<sup>+</sup> bile ducts in all inflammatory liver disease but not on normal liver tissue (Fig. 4D),<sup>(14)</sup> with no difference in expression between different liver diseases.

## CD95 EXPRESSION IS INCREASED ON LIVER INFILTRATING $T_{reg}$ AND MEDIATES CELL APOPTOSIS IN RESPONSE TO BEC FASL

$T_{reg}$  from diseased livers were more susceptible to apoptosis (Fig. 5A). LIT $_{reg}$  expressed CD154, OX40, CD40, CD95, and CD27 and high levels of CD95 in all diseased livers (Fig. 5B). Liver-infiltrating CD8 cells were expressed at lower levels (Fig. 5C) Freshly isolated

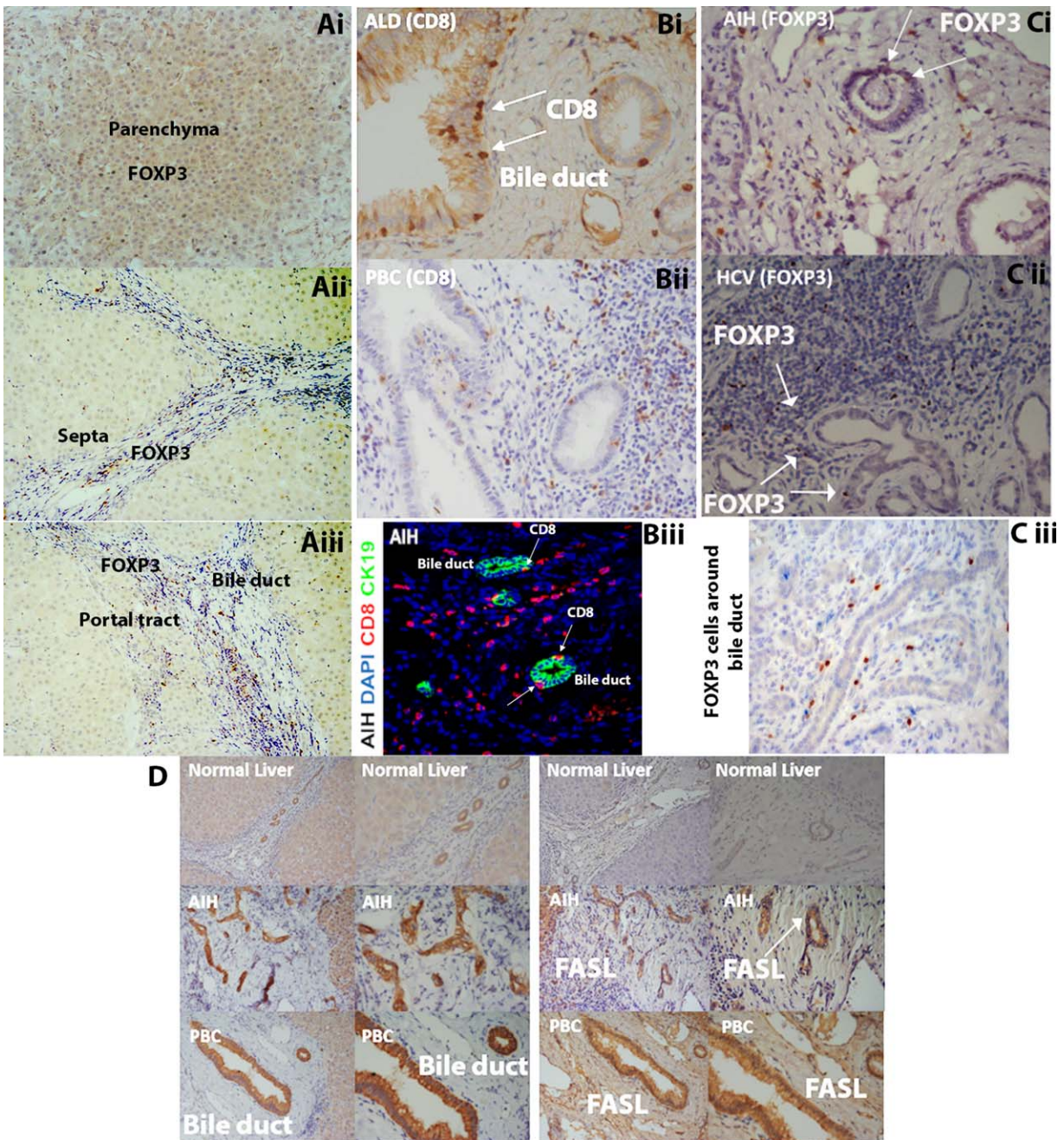


**FIG. 3.** Intrahepatic T<sub>reg</sub> remain functional and express T<sub>reg</sub> functional markers. (A) T<sub>reg</sub> representative of intrahepatic T<sub>reg</sub> phenotype were generated by transmigration of freshly isolated blood T<sub>reg</sub> across TNF- $\alpha$ - and IFN- $\gamma$ -stimulated human sinusoidal endothelium into RPMI-1640 control medium or inflamed liver supernatant for 24 hours. The suppressive function of T<sub>reg</sub> was analyzed by testing their ability to suppress the proliferation of CellTrace Violet prestained CD4 T effector cells using Miltenyi T<sub>reg</sub> suppression inspector. T<sub>reg</sub> populations compared included: (i) T<sub>reg</sub> directly isolated, without contact with any cells or supernatant; (ii) T<sub>reg</sub> in contact with endothelium but not transmigrated; (iii) PEM T<sub>reg</sub> migrated into control RPMI media; and (iv) PEM T<sub>reg</sub> migrated into liver supernatant. (B) Comparison of the expressions of T<sub>reg</sub> functional markers by freshly isolated human LIT<sub>reg</sub> and CD8 T cells. Data are presented as the mean  $\pm$  SEM (n = 5; one-way ANOVA followed by Bonferroni multiple comparison test). \*P < 0.05; \*\*P < 0.01; \*\*\*P < 0.005. (C) Representative flow cytometry overlays for each functional marker on LIT<sub>reg</sub> (CD3<sup>+</sup>CD4<sup>+</sup>CD25<sup>high</sup>CD127<sup>low</sup>) (top panel) and LICD8 (CD3<sup>+</sup>CD8<sup>+</sup>) (bottom panel).

T<sub>reg</sub> and CD8 cells were transmigrated across TNF- $\alpha$  and IFN- $\gamma$ -stimulated hepatic sinusoidal endothelium into either control media, stimulated BEC supernatant, or contact with BECs (Fig. 6, Supporting Fig. S5B). T<sub>reg</sub> underwent apoptosis in this model, whereas very few CD8 T cells did. T<sub>reg</sub> apoptosis in response to contact with BECs or exposure to BEC supernatant

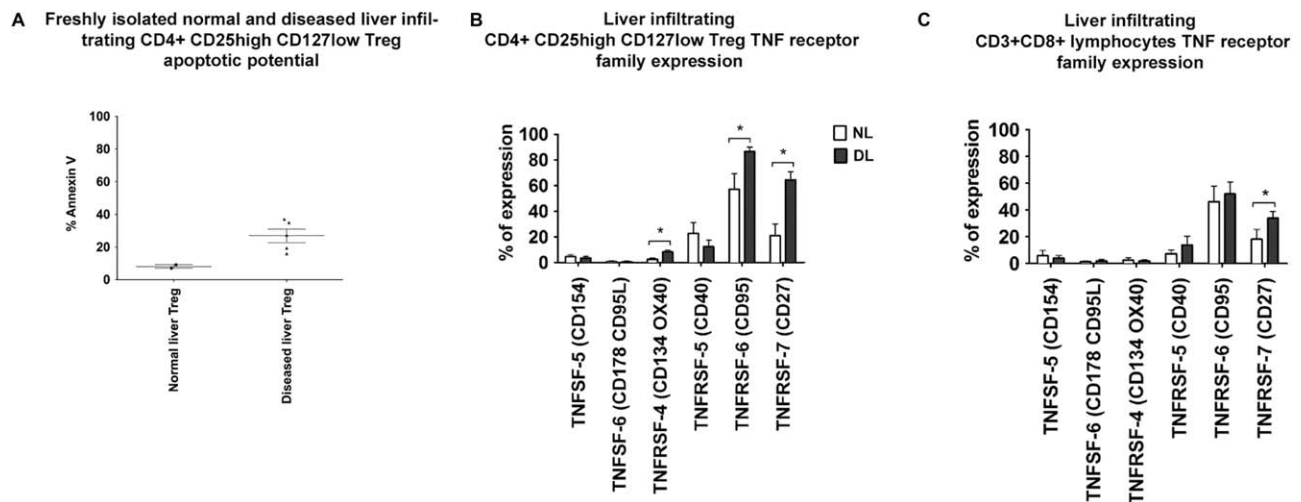
was prevented by blocking CD95 ligand or by the addition of IL-2 (Fig. 6). Apoptotic immune cells were present around the bile duct, and we observed FOXP3 T<sub>reg</sub> and caspase-3 dual-positive apoptotic cells in peribiliary regions in tissue slides (Fig. 6C).

We detected high expression of CD27 on LIT<sub>reg</sub> and CD70 the ligand for CD27 on liver-infiltrating dendritic



**FIG. 4.** Human diseased liver bile ducts expressing FASL and  $LIT_{reg}$  are present across liver lobules, with some residing in the peri-biliary region. Immunohistochemistry (A-D) and confocal fluorescence staining (Biii) of paraffin-embedded human liver sections for FOXP3, CD8, CK19 (biliary epithelial cell marker), and FASL are shown. (A) intrahepatic FOXP3<sup>+</sup> T<sub>reg</sub> are present across the parenchyma (i), septa (ii), and portal tract (iii). (B) LICD8<sup>+</sup> T cells reside close to bile ducts in the portal tracts in diseased human liver sections (Bi) alcoholic liver disease (ALD), (Bii) primary biliary cirrhosis (PBC), (Biii) Localization of CD8 cells on bile ducts in AIH liver tissue (red = CD8 [phycoerythrin]; green = bile ducts/CK19 [fluorescein isothiocyanate]; blue = nuclear stain [4',6-diamidino-2-phenylindole]). (C) Localization of FOXP3<sup>+</sup> cells around the bile duct in diseased livers (Ci) autoimmune hepatitis (AIH), (Cii) hepatitis C virus (HCV), (Ciii) non A non B seronegative hepatitis. (D) Expression of FASL (right panel) by human CK19-expressing bile ducts (left panel) in normal and diseased livers.





**FIG. 5.** Apoptotic potential and expression of the TNF receptor CD95 is increased on  $LIT_{reg}$  in diseased livers. (A) The apoptotic potential of  $LIT_{reg}$  in both normal and diseased livers was assessed by way of flow cytometry with Annexin 5 staining directly ex vivo. (B, C) Expression of TNF superfamily (TNFSF) and TNF receptor superfamily (TNFRSF) markers by  $LIT_{reg}$  ( $CD3^+CD4^+CD127^{low}CD25^{high}$ ) (B) and liver-infiltrating CD8 ( $CD3^+CD8^+$ ) (C) in normal livers (white bar = normal liver) and diseased livers (black bar = diseased liver). Data are presented as the mean  $\pm$  SEM ( $n = 6$ ; one-way ANOVA followed by Bonferroni multiple comparison test). \* $P < 0.05$ .

cells. However, recombinant CD70 had no effect on  $T_{reg}$  or CD8 T cell proliferation (Supporting Fig. S4).

## EFFECTOR T CELLS ARE THE MAIN SOURCE OF INTRAHEPATIC IL-2 AND $T_{reg}$ RESPOND BY PHOSPHORYLATION OF STAT5

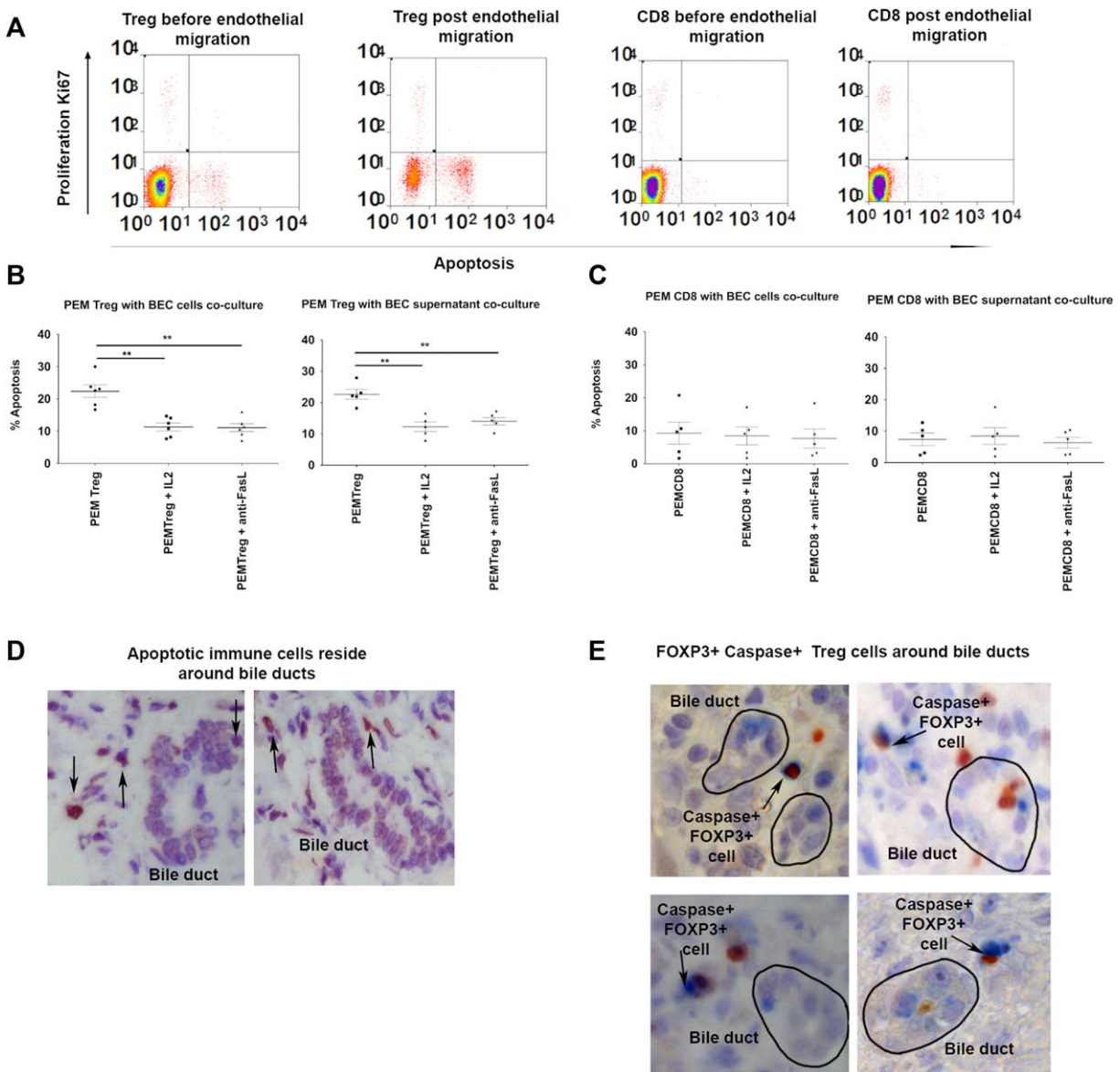
IL-2 was nearly undetectable in supernatants prepared from normal and chronic liver disease tissues (Fig. 7A). Secretion of IL-2 by human hepatocytes, HSECs, stromal cells, and biliary epithelial cells was minimal (Fig. 7B). IL-2 expression by liver-infiltrating activated CD4/CD8 cells was observed by way of flow cytometry (Fig. 7C) and secreted IL-2 was detected in the supernatant of liver-infiltrating CD4 and CD8 lymphocytes after stimulation with anti-CD3/CD28 beads, suggesting that effector lymphocytes are the main source of IL-2 in inflamed livers (Fig. 7D).

A high level of STAT5 phosphorylation was induced in 80%-90% of  $T_{reg}$ , both non-transmigrated and PEM  $T_{reg}$  (Fig. 8, Supporting Fig. S4), and was not affected by transmigration into the inflamed liver microenvironment (Fig. 8). Significantly fewer CD8 cells (27%-36%) responded compared with  $T_{reg}$  (Supporting Fig. S4), and the level of phosphorylated

STAT5 generated was also significantly greater in  $T_{reg}$  than in CD8 T cells (Fig. 8). Thus, IL-2-CD25 signaling and STAT5 phosphorylation remained intact in  $T_{reg}$  after transmigration into the inflamed hepatic microenvironment.

## Discussion

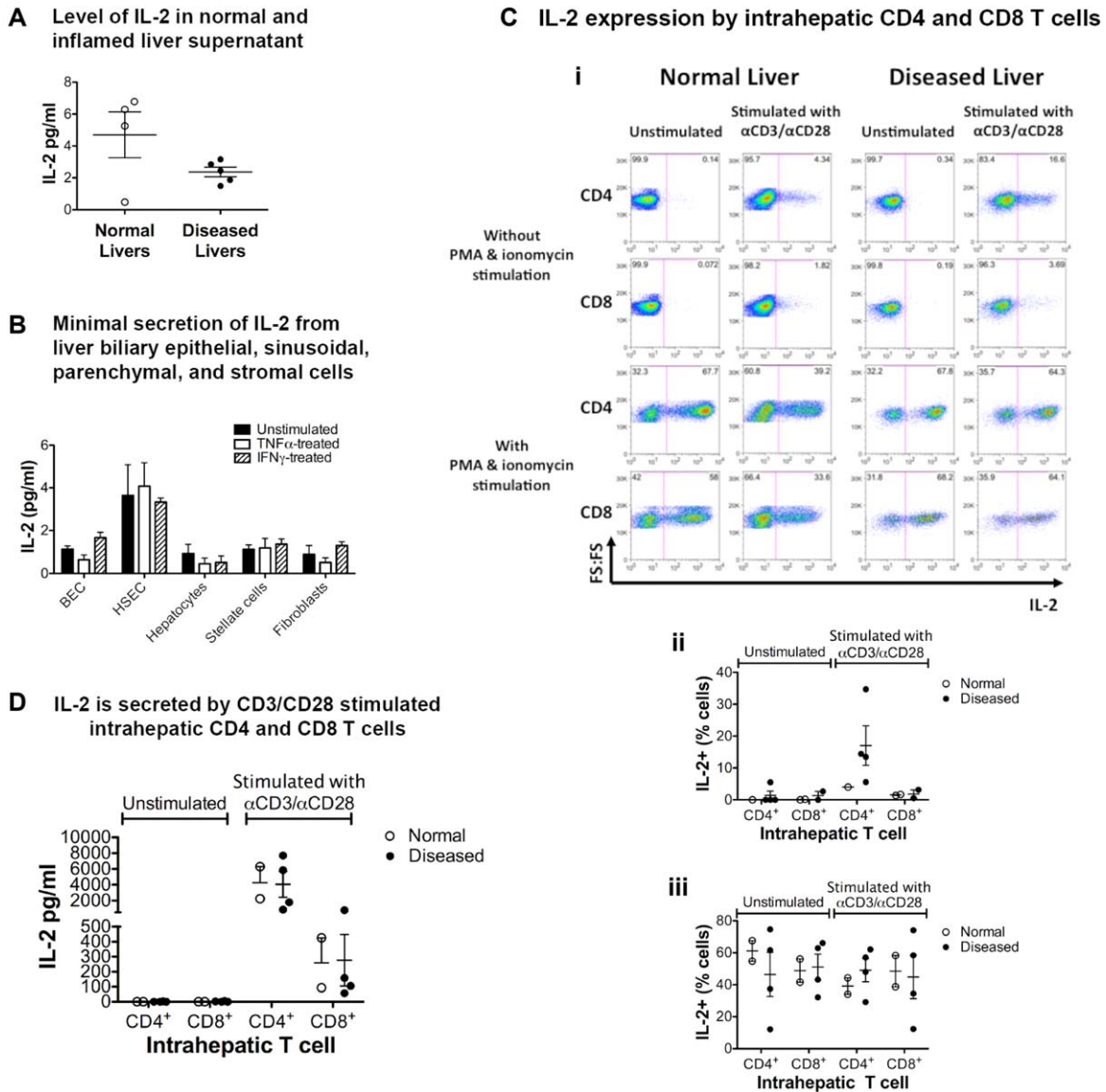
Functionally active  $T_{reg}$  are required to suppress effector cells and maintain immune homeostasis,<sup>(13)</sup> and the balance of  $T_{reg}$  and T effector cells will contribute to the outcome of liver inflammation.<sup>(17)</sup> Therapeutic modulation of tissue resident  $T_{reg}$  has potential for treating autoimmune liver diseases.<sup>(17,18)</sup>  $T_{reg}$  enter the liver from blood via hepatic sinusoids<sup>(5)</sup> before being localized within the liver in response to signals from the hepatic stromal compartment, hepatocytes, and cholangiocytes.<sup>(19)</sup> Once  $T_{reg}$  have migrated across the hepatic sinusoid, they are exposed to cytokines including IL-1 $\beta$ , IL-6, IL-8, IL-12, and IFN- $\gamma$  in the inflamed hepatic microenvironment (Fig. 2). This proinflammatory milieu has the potential to influence the stability and function of intrahepatic  $T_{reg}$ .<sup>(20)</sup> We observed that PEM  $T_{reg}$  that had migrated through activated endothelium into liver tissue supernatants showed no changes in FOXP3, RORc, or Tbet expression at 3 days, suggesting that  $T_{reg}$  differentiation is



**FIG. 6.** Apoptosis of PEM  $T_{reg}$  but not CD8 is FASL dependent and can be rescued by blocking FASL or by supplementing with IL-2.  $T_{reg}$  and CD8+ T cells were transmigrated across TNF- $\alpha$ - and IFN- $\gamma$ -stimulated human sinusoidal endothelium to obtain postendothelial migrated cells, which were then cocultured with BECs or BEC supernatant in the presence or absence of recombinant IL-2 or anti-FASL antibody. Apoptosis was analyzed using flow cytometry for Annexin V. (A) Representative dot plots of apoptosis for  $T_{reg}$  and CD8 before and after endothelial migration. (B, C) Apoptosis of PEM  $T_{reg}$  (B) and PEM CD8 cells (C) with either BECs or BEC supernatant in the presence or absence of IL-2 or anti-FASL (one-way ANOVA followed by Bonferroni multiple comparison tests).  $**P \leq 0.05$ . (D) Terminal deoxynucleotidyl transferase-mediated deoxyuridine triphosphate nick-end labeling revealed that apoptotic immune cells were present around bile ducts. (E) Dual staining of FOXP3 (brown) and caspase-3 (blue) in different diseased livers.

not affected by the liver milieu. In particular, the lack of ligand-activated transcription factor aryl hydrocarbon receptor and low levels of CD161, which are associated with Th 17 polarity, suggest few cells differentiate into Th 17 cells within the inflamed environment.<sup>(21-23)</sup>

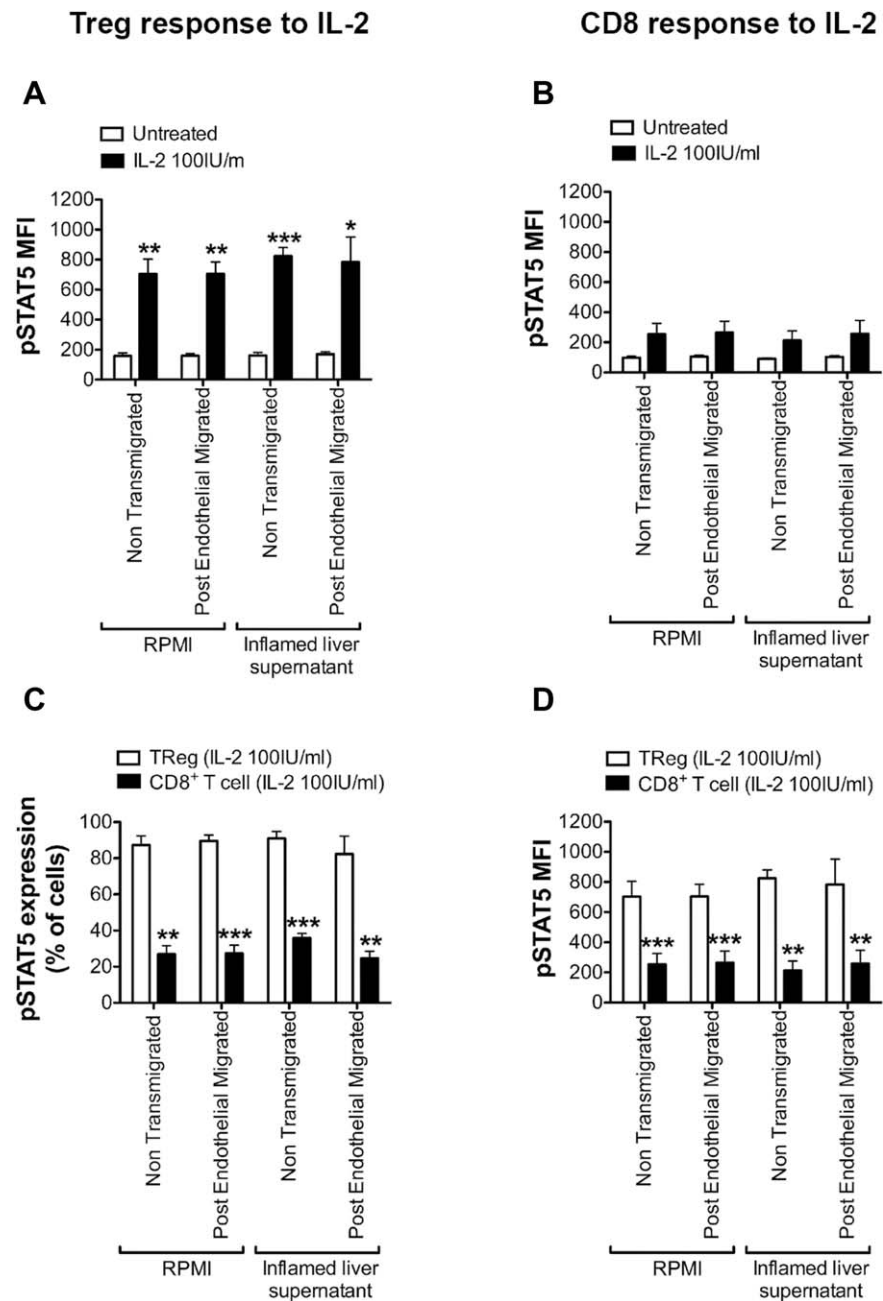
The frequency of LIT<sub>reg</sub> is increased across all liver diseases,<sup>(24)</sup> and these cells are not exhausted, with very low expression of PD-1 and high levels of CD69 and maintained functional properties<sup>(25,26)</sup> (Fig. 3Aiv). LIT<sub>reg</sub> exposed to a liver microenvironment maintain high levels of CD39, an ectonucleotidase used by  $T_{reg}$  to generate



**FIG. 7.** IL-2 is deficient in the liver microenvironment, and activated T lymphocytes are the source of IL-2. (A) IL-2 concentrations in normal and inflamed liver tissue supernatants are shown. Chronic diseased and normal liver tissues were diced and cultured for 24 hours in RPMI-1640 medium at 1 g/mL, and the concentration of IL-2 was measured by way of ELISA. (B) Minimal IL-2 synthesis by liver-resident cells under normal and inflamed conditions. Cultures of primary BECs, HSECs, hepatocytes, stellate cells, and fibroblasts from human livers were treated with the inflammatory cytokines TNF- $\alpha$  (10 ng/mL) and IFN- $\gamma$  (100 ng/mL) or left untreated, and the concentration of IL-2 in 24-hour supernatants was determined by way of Luminex. Data are presented as the mean  $\pm$  SEM (n = 3). (C, D) Intrahepatic CD4<sup>+</sup> and CD8<sup>+</sup> T cells express and secrete IL-2 upon T cell receptor activation. CD4<sup>+</sup> and CD8<sup>+</sup> T cells were isolated from normal and diseased human liver tissues by way of cell sorting and were cultured for 12 hours at 100 cells/mL with or without anti-CD3/anti-CD28 stimulation 4 cells/bead. (C) IL-2 expression was examined by way of flow cytometry. (Ci) Representative flow cytometry dot plots for IL-2 production by stimulated (CD3/CD28 beads) or unstimulated CD4 and CD8 T cells in the presence or absence of additional PMA and ionomycin stimulation. (Cii, Ciii) Summary frequencies for IL-2 expression without (Cii) and with (Ciii) additional PMA and ionomycin stimulation. (D) IL-2 secretion was examined by way of ELISA. PMA, phorbol 12-myristate 13-acetate.

immunosuppressive adenosine from extracellular nucleotides.<sup>(27)</sup> Low expression of CD39 has been reported in autoimmune liver disease, and our data suggest that the hepatic microenvironment cannot explain this finding.<sup>(28)</sup>

Similarly, LIT<sub>reg</sub> expressed high levels of CD44, which has been associated with FOXP3 expression and suppressive function.<sup>(29)</sup> After transendothelial migration into inflamed liver supernatant, T<sub>reg</sub> maintained IL-10



**FIG. 8.** STAT5 phosphorylation is functionally intact in response to supplemented IL-2 in postendothelial migrated  $T_{reg}$  in the liver microenvironment. STAT5 phosphorylation in pre-endothelial migrated and PEM  $T_{reg}$  and CD8 cells in response to IL-2 stimulation is shown. Peripheral blood mononuclear cells were transmigrated overnight across 24-hour TNF- $\alpha$ - and IFN- $\gamma$ -stimulated human sinusoidal endothelium into RPMI-1640 medium or inflamed liver supernatant. Postendothelial migrated cells and non-transmigrated cells were collected into separate fractions and were stimulated for 10 minutes with 0 or 100 IU/mL IL-2. (A, B) Phosphorylated STAT5 (pY694) expression by (A)  $CD4^{+}CD25^{+}CD127^{-}T_{reg}$  and (B) CD8 cells in the fractions was examined by way of flow cytometry in the absence of IL-2 stimulation (untreated) and after 10 minutes of treatment with 100 IU/mL IL-2. (C) Comparison of the percentages of  $T_{reg}$  and CD8 cells expressing phosphorylated STAT5 after treatment with IL-2. (D) Comparison of the median fluorescence intensity (MFI) of STAT5 phosphorylation in  $T_{reg}$  and CD8 cells after treatment with IL-2. Data are presented as the mean  $\pm$  SEM ( $n = 4$ ; paired  $t$  test). \* $P < 0.05$ , \*\* $P < 0.01$ , \*\*\* $P < 0.0001$ . Statistical tests compare cells from the same fraction (either untreated and IL-2 treated  $T_{reg}$  or CD8 cells (A and B) or IL-2 treated  $T_{reg}$  and CD8 cells (C and D)).

secretion and CD147 expression, a marker of activated and suppressive  $T_{reg}$ .<sup>(16)</sup> In addition, we also observed an enrichment of CTLA-4 expression in  $LIT_{reg}$ . CTLA-4 interacts with and removes CD80/CD86 from dendritic cells by way of transendocytosis, resulting in impaired costimulation via CD28 and is thus critical for  $T_{reg}$  function.<sup>(30)</sup> Overall,  $LIT_{reg}$  are equipped with key surface markers and intracellular cytokines required to execute their suppressive capacity.<sup>(31,32)</sup> These findings are

encouraging for proposed studies of adoptive  $T_{reg}$  therapy in autoimmune and inflammatory liver diseases because they suggest that therapeutic cells will remain functional and will not differentiate into effector cells in an inflammatory environment.<sup>(17)</sup>

We detected  $LIT_{reg}$  and LICD8 cells throughout the parenchyma and fibrous septa as well as around bile ducts in patients with liver disease. Biliary epithelial cells can secrete chemokines that localize

lymphocytes to portal tracts.<sup>(5,13,33,34)</sup> We recently reported that VCAM-1 on bile ducts supports effector T cells survival by binding to  $\alpha 4\beta 1$ ,<sup>(35)</sup> but apoptosis pathways affecting different lymphocyte subsets in the inflamed liver are poorly understood. BECs express FASL, which can induce T cell death by activating Fas. Thus, expression or secretion of FASL by BECs could contribute to intrahepatic T cell apoptosis.<sup>(36)</sup>

Circulating  $T_{reg}$  are highly susceptible to CD95-FASL-dependent apoptosis but not to TCR-mediated cell death in contrast to effector T cells.<sup>(11)</sup>  $T_{reg}$  in the tumor undergo CD95-dependent cell death as a consequence of FASL expression by tumor cells.<sup>(37)</sup> We have reported previously that BECs express FASL in inflammatory liver diseases,<sup>(14)</sup> but we have not explored the role of Fas in the differential fate of bile duct-associated  $T_{reg}$  and CD8 cells. In the present study, we demonstrate that PEM  $T_{reg}$  are more susceptible to CD95-FASL-mediated apoptosis either in contact with BECs or in response to BEC supernatant compared with PEM CD8 cells.  $T_{reg}$  could be rescued by blocking FASL on BECs or in the inflamed biliary supernatant. If apoptosis of  $T_{reg}$  affects only those in contact with bile ducts, and not those elsewhere in the liver, this may not have a substantial effect on the overall frequency of  $T_{reg}$  in the diseased liver. In addition, the total frequency of  $T_{reg}$  in the inflamed liver will depend on other factors, including the balance between recruitment, retention, proliferation, and exit of cells from the liver.

IL-2 is a crucial cytokine for  $T_{reg}$  survival that activates STAT5 phosphorylation in response to activation of the IL-2 receptor. IL-2 can selectively expand  $T_{reg}$  populations in vitro and in vivo.<sup>(38,39)</sup> We detected minimal IL-2 in both the normal and inflamed liver microenvironment, which might account in part for reduced  $T_{reg}$  functional capacity in the inflammatory tissue. The intrahepatic source of IL-2 is activated in CD4 and CD8 cells, which may be rapidly consumed by both effector and  $T_{reg}$  for their survival and proliferation.<sup>(40,41)</sup> Exogenous IL-2 restored levels of STAT5 phosphorylation and protected  $T_{reg}$  from Fas-mediated apoptosis but had no effect on CD8 T cells. Thus, the lack of IL-2 in the inflamed liver microenvironment may result in unopposed Fas-mediated  $T_{reg}$  apoptosis as well as contributing to defective intrahepatic LIT<sub>reg</sub> function. Because the requirement for IL-2 is much higher for CD8 cells, they may depend on different survival mechanisms. This is in agreement with a previous study on the effect of IL-2 on peripheral blood lymphocyte subsets.<sup>(42)</sup> This enhanced phosphorylation of STAT5 in  $T_{reg}$  compared with CD8 cells in response to IL-2 occurred in the presence and

absence of cytokine-enriched inflamed hepatic supernatant, suggesting that the differential effect of IL-2 on  $T_{reg}$  compared with effector cells is maintained in an inflammatory environment. This finding provides support for the therapeutic manipulation of LIT<sub>reg</sub> by treating these patients with IL-2 along with  $T_{reg}$  therapy in the future to maintain functional and surviving LIT<sub>reg</sub>.

In conclusion, we show for the first time that LIT<sub>reg</sub> are phenotypically stable within the inflamed hepatic environment and exhibit minimal plasticity. They remain functionally suppressive but are susceptible to apoptosis via the Fas pathway mediated by FASL on bile ducts, and this can be inhibited by exogenous IL-2. Therefore, IL-2 therapy may successfully restore intrahepatic  $T_{reg}$  numbers and function in liver disease.

## REFERENCES

- 1) Sakaguchi S, Sakaguchi N, Asano M, Itoh M, Toda M. Immunologic self-tolerance maintained by activated T cells expressing IL-2 receptor alpha-chains (CD25). Breakdown of a single mechanism of self-tolerance causes various autoimmune diseases. *J Immunol* 1995;155:1151-1164.
- 2) Putnam AL, Safinia N, Medvec A, Laszkowska M, Wray M, Mintz MA, et al. Clinical grade manufacturing of human alloantigen-reactive regulatory T cells for use in transplantation. *Am J Transplant* 2013;13:3010-3020.
- 3) Taubert R, Hardtke-Wolenski M, Noyan F, Wilms A, Baumann AK, Schlue J, et al. Intrahepatic regulatory T cells in autoimmune hepatitis are associated with treatment response and depleted with current therapies. *J Hepatol* 2014;61:1106-1114.
- 4) Unitt E, Rushbrook SM, Marshall A, Davies S, Gibbs P, Morris LS, Coleman N, et al. Compromised lymphocytes infiltrate hepatocellular carcinoma: the role of T-regulatory cells. *HEPATOLOGY* 2005;41:722-730.
- 5) Oo YH, Weston CJ, Lalor PF, Curbishley SM, Withers DR, Reynolds GM, et al. Distinct roles for CCR4 and CXCR3 in the recruitment and positioning of regulatory T cells in the inflamed human liver. *J Immunol* 2010;184:2886-2898.
- 6) Lalor PF, Adams DH. The liver: a model of organ-specific lymphocyte recruitment. *Expert Rev Mol Med* 2002;4:1-16.
- 7) Sakaguchi S, Vignali DA, Rudensky AY, Niec RE, Waldmann H. The plasticity and stability of regulatory T cells. *Nat Rev Immunol* 2013;13:461-467.
- 8) Ueno A, Jijon H, Chan R, Ford K, Hirota C, Kaplan GG, et al. Increased prevalence of circulating novel IL-17 secreting Foxp3 expressing CD4+ T cells and defective suppressive function of circulating Foxp3+ regulatory cells support plasticity between Th17 and regulatory T cells in inflammatory bowel disease patients. *Inflamm Bowel Dis* 2013;19:2522-2534.
- 9) Schulze-Osthoff K, Ferrari D, Los M, Wesselborg S, Peter ME. Apoptosis signaling by death receptors. *Eur J Biochem* 1998;254:439-459.
- 10) Nasta F, Laudisi F, Sambucci M, Rosado MM, Pioli C. Increased Foxp3+ regulatory T cells in poly(ADP-Ribose) polymerase-1 deficiency. *J Immunol* 2010;184:3470-3477.
- 11) Fritzsching B, Oberle N, Eberhardt N, Quick S, Haas J, Wildemann B, et al. In contrast to effector T cells, CD4+ CD25+FoxP3+ regulatory T cells are highly susceptible to

- CD95 ligand- but not to TCR-mediated cell death. *J Immunol* 2005;175:32-36.
- 12) Sakaguchi S. Naturally arising Foxp3-expressing CD25+CD4+ regulatory T cells in immunological tolerance to self and non-self. *Nat Immunol* 2005;6:345-352.
  - 13) Oo YH, Banz V, Kavanagh D, Liaskou E, Withers DR, Humphreys E, et al. CXCR3-dependent recruitment and CCR6-mediated positioning of Th-17 cells in the inflamed liver. *J Hepatol* 2012;57:1044-1051.
  - 14) Afford SC, Ahmed-Choudhury J, Randhawa S, Russell C, Youster J, Crosby HA, et al. CD40 activation-induced, Fas-dependent apoptosis and NF-kappaB/AP-1 signaling in human intrahepatic biliary epithelial cells. *FASEB J* 2001;15:2345-2354.
  - 15) **Bessede A, Gargaro M, Pallotta MT, Matino D, Servillo G, Brunacci C, et al.** Aryl hydrocarbon receptor control of a disease tolerance defence pathway. *Nature* 2014;511:184-190.
  - 16) Solstad T, Bains SJ, Landskron J, Aandahl EM, Thiede B, Tasken K, et al. CD147 (Basigin/Emmprin) identifies FoxP3+CD45RO+CTLA4+ -activated human regulatory T cells. *Blood* 2011;118:5141-5151.
  - 17) Oo YH, Sakaguchi S. Regulatory T-cell directed therapies in liver diseases. *J Hepatol* 2013;59:1127-1134.
  - 18) Bluestone JA, Buckner JH, Fitch M, Gitelman SE, Gupta S, Hellerstein MK, et al. Type 1 diabetes immunotherapy using polyclonal regulatory T cells. *Sci Transl Med* 2015;7:315ra189.
  - 19) Holt AP, Haughton EL, Lalor PF, Filer A, Buckley CD, Adams DH. Liver myofibroblasts regulate infiltration and positioning of lymphocytes in human liver. *Gastroenterology* 2009;136:705-714.
  - 20) **Wang T, Sun X, Zhao J, Zhang J, Zhu H, Li C, et al.** Regulatory T cells in rheumatoid arthritis showed increased plasticity toward Th17 but retained suppressive function in peripheral blood. *Ann Rheum Dis* 2014;74:1293-1301.
  - 21) Veldhoen M, Hirota K, Westendorf AM, Buer J, Dumoutier L, Renaud JC, et al. The aryl hydrocarbon receptor links TH17-cell-mediated autoimmunity to environmental toxins. *Nature* 2008;453:106-109.
  - 22) Fergusson JR, Smith KE, Fleming VM, Rajoriya N, Newell EW, Simmons R, et al. CD161 defines a transcriptional and functional phenotype across distinct human T cell lineages. *Cell Rep* 2014;9:1075-1088.
  - 23) Gao W, Thompson L, Zhou Q, Putheti P, Fahmy TM, Strom TB, et al. Treg versus Th17 lymphocyte lineages are cross-regulated by LIF versus IL-6. *Cell Cycle* 2009;8:1444-1450.
  - 24) **Sebode M, Peiseler M, Franke B, Schwinge D, Schoknecht T, Wortmann F, et al.** Reduced FOXP3(+) regulatory T cells in patients with primary sclerosing cholangitis are associated with IL2RA gene polymorphisms. *J Hepatol* 2014;60:1010-1016.
  - 25) Radstake TR, van Bon L, Broen J, Wenink M, Santegoets K, Deng Y, et al. Increased frequency and compromised function of T regulatory cells in systemic sclerosis (SSc) is related to a diminished CD69 and TGFbeta expression. *PLoS One* 2009;4:e5981.
  - 26) Lieberman SM, Kim JS, Corbo-Rodgers E, Kambayashi T, Maltzman JS, Behrens EM, et al. Site-specific accumulation of recently activated CD4+ Foxp3+ regulatory T cells following adoptive transfer. *Eur J Immunol* 2012;42:1429-1435.
  - 27) **Deaglio S, Dwyer KM, Gao W, Friedman D, Usheva A, Erat A, et al.** Adenosine generation catalyzed by CD39 and CD73 expressed on regulatory T cells mediates immune suppression. *J Exp Med* 2007;204:1257-1265.
  - 28) Grant CR, Liberal R, Holder BS, Cardone J, Ma Y, Robson SC, et al. Dysfunctional CD39(POS) regulatory T cells and aberrant control of T-helper type 17 cells in autoimmune hepatitis. *HEPATOLOGY* 2014;59:1007-1015.
  - 29) **Liu T, Soong L, Liu G, Konig R, Chopra AK.** CD44 expression positively correlates with Foxp3 expression and suppressive function of CD4+ Treg cells. *Biol Direct* 2009;4:40.
  - 30) Qureshi OS, Zheng Y, Nakamura K, Attridge K, Manzotti C, Schmidt EM, et al. Trans-endocytosis of CD80 and CD86: a molecular basis for the cell-extrinsic function of CTLA-4. *Science* 2011;332:600-603.
  - 31) **Grossman WJ, Verbsky JW, Barchet W, Colonna M, Atkinson JP, Ley TJ.** Human T regulatory cells can use the perforin pathway to cause autologous target cell death. *Immunity* 2004;21:589-601.
  - 32) **Gondek DC, Lu LF, Quezada SA, Sakaguchi S, Noelle RJ.** Cutting edge: contact-mediated suppression by CD4+CD25+ regulatory cells involves a granzyme B-dependent, perforin-independent mechanism. *J Immunol* 2005;174:1783-1786.
  - 33) Curbishley SM, Eksteen B, Gladue RP, Lalor P, Adams DH. CXCR3 Activation promotes lymphocyte transendothelial migration across human hepatic endothelium under fluid flow. *Am J Pathol* 2005;167:887-899.
  - 34) Heydtmann M, Lalor PF, Eksteen JA, Hubscher SG, Briskin M, Adams DH. CXC chemokine ligand 16 promotes integrin-mediated adhesion of liver-infiltrating lymphocytes to cholangiocytes and hepatocytes within the inflamed human liver. *J Immunol* 2005;174:1055-1062.
  - 35) Afford SC, Humphreys EH, Reid DT, Russell CL, Banz VM, Oo Y, et al. Vascular cell adhesion molecule 1 expression by biliary epithelium promotes persistence of inflammation by inhibiting effector T-cell apoptosis. *HEPATOLOGY* 2014;59:1932-1943.
  - 36) Weant AE, Michalek RD, Khan IU, Hollbrook BC, Willingham MC, Grayson JM. Apoptosis regulators Bim and Fas function concurrently to control autoimmunity and CD8+ T cell contraction. *Immunity* 2008;28:218-230.
  - 37) Weiss JM, Subleski JJ, Back T, Chen X, Watkins SK, Yagita H, et al. Regulatory T cells and myeloid-derived suppressor cells in the tumor microenvironment undergo Fas-dependent cell death during IL-2/alphaCD40 therapy. *J Immunol* 2014;192:5821-5829.
  - 38) Koreth J, Matsuoka K, Kim HT, McDonough SM, Bindra B, Alyea EP 3rd, et al. Interleukin-2 and regulatory T cells in graft-versus-host disease. *N Engl J Med* 2011;365:2055-2066.
  - 39) **Saadoun D, Rosenzweig M, Joly F, Six A, Carrat F, Thibault V, et al.** Regulatory T-cell responses to low-dose interleukin-2 in HCV-induced vasculitis. *N Engl J Med* 2011;365:2067-2077.
  - 40) Morikawa H, Sakaguchi S. Genetic and epigenetic basis of Treg cell development and function: from a FoxP3-centered view to an epigenome-defined view of natural Treg cells. *Immunol Rev* 2014;259:192-205.
  - 41) Boyman O, Sprent J. The role of interleukin-2 during homeostasis and activation of the immune system. *Nat Rev Immunol* 2012;12:180-190.
  - 42) Dupont G, Demaret J, Venet F, Malergue F, Malcus C, Poitevin-Later F, et al. Comparative dose-responses of recombinant human IL-2 and IL-7 on STAT5 phosphorylation in CD4+FOXP3- cells versus regulatory T cells: a whole blood perspective. *Cytokine* 2014;69:146-149.

Author names in bold denote shared co-first authorship.

## Supporting Information

Additional Supporting Information may be found at [onlinelibrary.wiley.com/doi/10.1002/hep.28517/supinfo](http://onlinelibrary.wiley.com/doi/10.1002/hep.28517/supinfo).