

UNIVERSITY OF BIRMINGHAM

Research at Birmingham

PiSZ alpha-1 antitrypsin deficiency (AATD)

Green, Clara; Vayalapa, Sushanth; Hampson, Judith; Mukherjee, Deyashini; Stockley, Robert; Turner, Alice

DOI:

[10.1136/thoraxjnl-2015-206906](https://doi.org/10.1136/thoraxjnl-2015-206906)

License:

None: All rights reserved

Document Version

Peer reviewed version

Citation for published version (Harvard):

Green, C, Vayalapa, S, Hampson, JA, Mukherjee, D, Stockley, RA & Turner, A 2015, 'PiSZ alpha-1 antitrypsin deficiency (AATD): pulmonary phenotype and prognosis relative to PiZZ AATD and PiMM COPD', *Thorax*, vol. 70, no. 10, pp. 939-945. <https://doi.org/10.1136/thoraxjnl-2015-206906>

[Link to publication on Research at Birmingham portal](#)

Publisher Rights Statement:

Eligibility for repository: Checked on 22/1/2016

General rights

Unless a licence is specified above, all rights (including copyright and moral rights) in this document are retained by the authors and/or the copyright holders. The express permission of the copyright holder must be obtained for any use of this material other than for purposes permitted by law.

- Users may freely distribute the URL that is used to identify this publication.
- Users may download and/or print one copy of the publication from the University of Birmingham research portal for the purpose of private study or non-commercial research.
- User may use extracts from the document in line with the concept of 'fair dealing' under the Copyright, Designs and Patents Act 1988 (?)
- Users may not further distribute the material nor use it for the purposes of commercial gain.

Where a licence is displayed above, please note the terms and conditions of the licence govern your use of this document.

When citing, please reference the published version.

Take down policy

While the University of Birmingham exercises care and attention in making items available there are rare occasions when an item has been uploaded in error or has been deemed to be commercially or otherwise sensitive.

If you believe that this is the case for this document, please contact UBIRA@lists.bham.ac.uk providing details and we will remove access to the work immediately and investigate.

Queries for Author



Journal: Thorax

Paper: thoraxjnl-2015-206906

Title: PiSZ alpha-1 antitrypsin deficiency (AATD): pulmonary phenotype and prognosis relative to PiZZ AATD and PiMM COPD

The proof of your manuscript appears on the following page(s).

It is the responsibility of the corresponding author to check against the original manuscript and approve or amend these proofs.

Please read the proofs carefully, checking for accuracy, verifying the reference order and checking figures and tables. When reviewing your page proof please keep in mind that a professional copyeditor edited your manuscript to comply with the style requirements of the journal.

This is not an opportunity to alter, amend or revise your paper; it is intended to be for correction purposes only. The journal reserves the right to charge for excessive author alterations or for changes requested after the proofing stage has concluded.

During the preparation of your manuscript for publication, the questions listed below have arisen (the query number can also be found in the gutter close to the text it refers to). Please attend to these matters and return the answers to these questions when you return your corrections.

Please note, we will not be able to proceed with your article if these queries have not been addressed.

A second proof is not normally provided.

Query Reference	Query
Q1	IMPORTANT: Corrections at this stage should be limited to those that are essential . Extensive corrections will delay the time to publication and may also have to be approved by the journal Editor.
Q2	Please note that alterations cannot be made after the article has published online.
Q3	Author SURNAMES (family names) have been highlighted - please check that these are correct.
Q4	Please check all names are spelt correctly, and check affiliation and correspondence details, including departments.
Q5	Please check that you have listed any funding you received, and given the grant number.
Q6	Please ensure that your trial registration number (if relevant for your article type) appears at the end of the abstract. If not, please provide and we will insert.
Q7	As per style requirement, for example, cancer patients etc. should be set as patients with cancer. Hence, please confirm if we can follow this style for patients with PiZZ, patients with PiSZ, patients with PiMM etc. throughout the article.
Q8	There is mixed usage of DLCO and DCLO. Please confirm the correct usage.
Q9	Please check the sentence 'However, a level of...' is incomplete.
Q10	Please provide the expansions for the following: [UZ, I, IHD].
Q11	Please provide significance of italics in table.

Author query sheet

If you are happy with the proof as it stands, please email to confirm this. Minor changes that do not require a copy of the proof can be sent by email (please be as specific as possible).

Email: **production.thorax@bmj.com**

If you have any changes that cannot be described easily in an email, please mark them clearly on the proof using the annotation tools and email this by reply to the eProof email.

We will keep a copy of any correspondence from you related to the author proof for six months. After six months, correspondence will be deleted.

Please respond within 48 hours

ORIGINAL ARTICLE

PiSZ alpha-1 antitrypsin deficiency (AATD): pulmonary phenotype and prognosis relative to PiZZ AATD and PiMM COPD

C E Green,¹ S Vayalapa,¹ J A Hampson,¹ D Mukherjee,² R A Stockley,¹ A M Turner^{1,3}

► Additional material is published online only. To view please visit the journal online (<http://dx.doi.org/10.1136/thoraxjnl-2015-206906>).

¹Centre for Translational Inflammation Research, University of Birmingham, Birmingham, UK
²Imperial College, London, UK
³Heart of England NHS Foundation Trust, Birmingham, UK

Correspondence to

Dr AM Turner, Centre for Translational Inflammation Research, University of Birmingham, Birmingham, B15 2WB, UK; a.m.wood@bham.ac.uk

Received 9 February 2015

Revised 9 June 2015

Accepted 15 June 2015

ABSTRACT

Introduction The PiSZ genotype results in less severe deficiency of alpha-1 antitrypsin (AAT) than PiZZ. Less is known about phenotypic and prognostic features.

Methods We studied 699 PiZZ, 126 PiSZ and 316 PiMM patients. All AAT deficiency (AATD) patients were augmentation naive. PiSZ were compared with PiZZ patients for clinical phenotype at baseline including CT findings, smoke exposure, progression of lung disease and survival. Similarly, PiSZ patients diagnosed as a result of investigation for possible lung disease (lung index cases) were compared with PiMM. Multivariable analytical techniques and matching (PiSZ to PiZZ) were employed to account for demographic differences.

Results Pack-years smoked and FEV1 exhibited a negative correlation in PiSZ and ZZ patients (both $r=-0.43$), with emphysema and COPD occurring more commonly in PiZZ patients at <20 pack-year exposure. In multivariable analyses, PiSZ patients were less likely to have emphysema ($p<0.01$) and had better survival than PiZZ ($p=0.017$), but lung function decline did not differ significantly. 42% of PiSZ patients had upper-zone-dominant emphysema on CT scan. Analyses of AAT level confirmed a critical threshold at 11 μM , particularly with regard to phenotypes classical of PiZZ AATD.

Significant baseline differences suggested that PiSZ had presented earlier to health services than PiMM. Once this was accounted for, risk of emphysema did not differ between PiSZ and PiMM although survival was lower in PiMM patients ($p<0.01$).

Conclusions PiSZ patients are less susceptible to cigarette smoke than PiZZ. The pattern of emphysema may be similar at diagnosis to usual COPD.

INTRODUCTION

Alpha-1 antitrypsin deficiency (AATD) results from several deficiency alleles, with severe deficiency occurring in Z allele homozygotes (PiZZ), or carriers of null alleles leading to absence of AAT¹ and is associated with early-onset emphysema.² The S allele leads to a milder deficiency, and there has been considerable debate about whether heterozygous PiSZ patients are at increased risk of lung disease, largely due to the confounding factor of acquisition bias in some prior work. A meta-analysis concluded that PiSZ patients exhibit a risk of COPD over three times that of a normal individual;³ however, this result was influenced by one study showing a large increase in risk.⁴

Key messages**What is the key question?**

- Are patients with the PiSZ genotype for alpha-1 antitrypsin deficiency (AATD) similar to classical PiZZ AATD or to usual COPD?

What is the bottom line?

- Many PiSZ patients look phenotypically similar to usual COPD at their first assessment; the interaction between their AAT level and smoke exposure appears critical in determining subsequent decline.

Why read on?

- Detailed phenotypic data, decline of lung function and mortality analyses are presented between PiSZ, PiZZ and PiMM, together with an exploration of threshold levels of smoke exposure in AATD and current knowledge pertinent to diagnosing and managing AATD.

Previous studies of PiSZ patients are summarised in online supplementary table 1.

Epidemiological studies suggest that there are >500 000 PiSZ individuals in Europe,⁵ who typically exhibit an AAT level less than half that of a normal (PiMM) person.⁶ An interaction between AAT and cigarette smoke exposure occurs in murine models, where emphysema develops more rapidly.⁷ This, together with the available epidemiology, suggests that PiSZ patients should have a lung disease risk lying between PiMM and PiZZ patients, given the same level of smoke exposure. Consistent with this, we have shown in a relatively small cohort ($n=63$), matched for smoking status, that PiSZ patients exhibit less severe lung disease than PiZZ.⁸ Even low levels of smoke exposure may be deleterious to lung function in PiZZ patients; however, an important threshold may occur at 20 pack-years, above which associations between FEV1 and pack-years are less apparent.⁹ Whether this differs in PiSZ patients is unknown, and little is known about their prognosis. We sought to confirm the pattern of lung disease exhibited by PiSZ patients, explore the relationship between cumulative smoke exposure, AAT level and severity of disease, and compare prognosis between PiSZ, PiZZ and PiMM patients.



To cite: Green CE, Vayalapa S, Hampson JA, et al. *Thorax* Published Online First: [please include Day Month Year] doi:10.1136/thoraxjnl-2015-206906

METHODS

Subjects

The UK AATD registry (ADAPT) was established in 1996 and has been described in detail elsewhere.¹⁰ Briefly, patients undergo annual lung physiology, biological sample collection and clinical assessment. At enrolment most patients have a chest CT scan; quantitative CT analysis was undertaken by density mask analysis of 5 mm CT scan slices; voxel indices (VI) at -910 (the proportion of lung voxels below -910 Hounsfield Units (HU)) and the ratio between the upper and lower zones calculated.¹¹ Lung function decline was determined on all patients with ≥ 3 years' follow-up; methods for calculation of decline have been described in our previous work.¹² All patients with PiSZ and PiZZ genotypes were selected. Those diagnosed due to investigation for symptoms/signs of lung disease were termed lung index cases.

PiMM patients with usual COPD comprised all patients in the West Midlands COPD cohort (WMCC; described in our previous published work¹³) and all patients from the Chronic Diseases Resource Centre (CDRC; a University of Birmingham COPD patient registry, identified from local clinics). The CDRC has superseded the WMCC and has assessment procedures similar to the UK AATD registry. Data on CT density and decline in lung function were not available for PiMM patients, as referring centres used a variety of CT protocols, and had either not been followed up for sufficient time or had insufficient lung function data to calculate decline.

Statistical analysis

All analyses were carried out in SPSS (SPSS V.20; IBM, USA). Univariable analyses compared PiSZ and PiZZ patients for demographics, smoking status, index status, occupational exposure (assessment methods described in our previous work¹²), comorbidities, lung function, CT densitometry (where available) survival and lung function decline. Analyses were performed using χ^2 tests for categorical variables and Mann-Whitney U tests for continuous variables, substratifying by index status, smoking status and presence of COPD for analyses pertaining to decline. Co-variables for logistic, linear and Cox regression analyses were selected if $p < 0.1$ in univariable analysis and no significant collinearity with another included variable. Prior literature on influences on mortality¹⁴ and decline^{12 15 16} in AATD were used to aid prioritisation of co-variables where necessary. All results from the multivariable analysis are reported as two-tailed; significance was taken at $p < 0.05$. Since there were demographic differences between PiSZ and PiZZ patients, for which subgroup analyses and statistical adjustment in regression analysis might be imperfect, an attempt at a matched analysis was also made (see online supplementary data). Within the whole AATD group, the relationship of AAT level to clinical phenotype and decline was conducted using similar techniques. Finally, univariable analyses were undertaken comparing lung index PiSZ and PiMM patients for demographics, smoking status, clinical phenotype and survival. Results guided logistic and linear regressions similar to the PiSZ versus PiZZ comparisons.

RESULTS

Comparison of PiSZ and PiZZ patients

Table 1 shows patients' characteristics and univariable analyses. PiZZ patients were more likely to be lung index cases and ex smokers, had higher rates of emphysema, bronchiectasis and chronic bronchitis, worse lung function (in all parameters), lower AAT levels and worse survival. Almost all (99.8%) PiZZ patients

and 11.3% PiSZ patients had $AAT < 11 \mu M$. CT scans were available on 37 non-index and 64 index PiSZ patients (index vs non-index characteristics; see online supplementary table 2). Smoking appeared to be a greater influence on clinical phenotype than PiSZ versus PiZZ genotype (smoke exposed vs never smokers' characteristics; see online supplementary table 3).

Direct correlation between FEV1% predicted and pack-years occurred up to a break point, which appeared similar to the published 20 pack-year threshold in PiZZ patients, though possibly higher in PiSZ (figure 1A, B). The proportion of emphysema and COPD cases occurring below 20 pack-years was greater in PiZZ patients (figure 1C, D). There was no difference in prevalence of common comorbidities (IHD, osteoporosis, anxiety, depression), age, pack-years smoked or occupational exposure risks (all $p > 0.2$). Multivariable logistic regressions, stratified for method of ascertainment of AATD, including smoke exposure and age as covariates, showed that emphysema was less common in lung index and family screened PiSZ patients (OR 0.15 and 0.03; $p = 0.003$ and < 0.001 , respectively), while rates of chronic bronchitis and bronchiectasis were similar between groups (all $p > 0.2$). In linear regressions stratified for method of ascertainment of AATD and adjusting for smoking status and age, lung index PiSZ patients had significantly better lung function compared with PiZZ (all parameters shown in table 1, $p < 0.05$), while non-index PiSZ patients were better in most parameters (residual volume and total lung capacity no difference, other parameters $p < 0.05$). Matched analyses were no different (see online supplementary results). Differences in emphysema between PiSZ and PiZZ patients were more marked in the lower zones (figure 2); 42.9% of PiSZ patients scanned had upper-zone-dominant emphysema compared with 14.1% of PiZZ (both $p < 0.01$).

Sufficient physiological data to calculate decline were available in 68 PiSZ and 514 PiZZ patients, with a mean of five measures per PiZZ and four per PiSZ patient. 22.5% of PiZZ patients had COPD with FEV1 $< 30\%$ predicted ($n = 116$), 33.5% had FEV1 30–50% ($n = 172$), 25% ($n = 129$) had COPD with FEV1 $> 50\%$ predicted and the remainder did not have COPD at the start of the decline calculation period ($n = 97$). In the PiSZ patients, these figures were 11.3%, 8.1%, 17.7%, 29% and 33.9% ($n = 8, 5, 12, 20$ and 23), respectively. Decline in FEV1 in some subgroups of interest is shown in table 2. Median decline was greatest when baseline FEV1 was 50–80% predicted (PiZZ -56.3 mL/year, PiSZ -65.3 mL/year, $p = 0.707$). There was no difference in annual decline of FEV1 or gas transfer (DLCO and KCO) %predicted when analysed as categories (figure 3) or continuous variables. Regression analyses stratified for smoking status, presence of COPD and index status, adjusting for baseline lung function and age did not influence this similarity (all $p > 0.18$ for smoking status, $p > 0.33$ for COPD, $p > 0.77$ for index status), nor did matching (see online supplementary results). Cox regression analyses, including age, smoking status, index status and baseline FEV1 as co-variables, showed significantly better survival in PiSZ patients (figure 4A).

We then explored the importance of AAT level with regard to susceptibility to smoke, subsequent development of lung disease and decline. When considered as a continuous variable, AAT level had no significant impact on logistic regressions seeking associations of emphysema, chronic bronchitis and bronchiectasis. However, a level of $\leq 11 \mu M$ associated with development of emphysema ($p < 0.001$), an UZ/LZVI suggestive of lower-zone-dominant disease ($p < 0.001$) and chronic bronchitis ($p < 0.001$). There was a strong trend toward interaction between AAT $\leq 11 \mu M$ and pack-years smoked with regard to risk of

Table 1 Clinical characteristics of patients

Feature	PiZZ n=699	PiSZ n=126	PiSZ lung index cases N=64	PiMM N=316	p Value	
					PiSZ vs PiZZ	PiSZ index vs PiMM
Male	404 (57.8)	71 (56.3)	38 (59.4)	182 (57.7)	0.717	0.810
Age	50.8 ((16.4)	53.5 ((20.0)	55.4 ((1.5)	68.4 ((13.6)	0.021	<0.001
Smoking status					<0.001	0.004
Ex smoker	510 (73.0)	56 (44.4)	37 (57.8)	192 (60.0)		
Never smoked	161 (23.0)	43 (34.1)	15 (23.4)	3 (0.9)		
Current smoker	28 (4.0)	27 (21.4)	12 (18.8)	121 (39.0)		
Pack-years smoked	13.5 ((23.5)	13.0 ((35.4)	26.2 ((3.0)	44.2 ((32.5)	0.402	<0.001
Reason for diagnosis			–	–	0.007	–
Lung disease	532 (76.2)	77 (61.0)				
Family screening	118 (16.9)	38 (30.5)				
Liver disease	11 (1.6)	1 (0.8)				
Other reason	38 (5.4)	10 (7.9)				
COPD	587 (84.0)	66 (52.4)	43 (67.2)	316 (100)	<0.001	<0.001
Emphysema	528 (75.5)	46 (36.5)	35 (54.7)	257 (81.3)	<0.001	<0.001
Chronic bronchitis	249 (35.6)	31 (24.6)	18 (28.1)	198 (62.8)	0.034	0.037
Bronchiectasis	189 (27.0)	22 (17.4)	11 (17.2)	96 (30.3)	0.041	<0.001
AAT level	4.0 ((2.1)	14.4 (4.4)	14.9 (3.7)	–	<0.001	–
FEV1 _{pp}	47.9(45.6)	94.5 (51.3)	76.5 (2.6)	46.4 (26.0)	<0.001	<0.001
FEV1/FVC (%)	38.2 (26.4)	67.5 (37.5)	55.0 (2.7)	43.3 (20.0)	<0.001	0.004
TLC _{pp}	115.3 (21.9)	107.4 (18.3)	109.2 (1.9)	103.0 (20.2)	<0.001	<0.001
RV _{pp}	119.3 (54.9)	96.9 (46.3)	107.9 (4.6)	119.8 (53.8)	<0.001	<0.001
DLC _{Opp}	69.74(36.0)	86.3 (34.2)	76.5 (3.1)	48.6 (23.9)	<0.001	<0.001
KCO _{pp}	64.3 (28.8)	89.0 (29.5)	78.1 (3.0)	59.0 (29.6)	<0.001	<0.001
Follow-up time (years)	10.4 (5.3)	7.0 (8.5)	7.8 (0.6)	3.2 (3.0)	0.021	<0.001
Deceased	172 (24.6)	10 (7.9)	7 (10.9)	91 (28.8)	<0.001	0.003

Data are shown as n (%) or median (IQR). In PiSZ index cases, data are shown as mean (SE) due to normal distribution. AAT, alpha-1 antitrypsin; DLCO, carbon monoxide diffusing capacity; KCO, carbon monoxide transfer coefficient; RV, residual volume; TLC, total lung capacity.

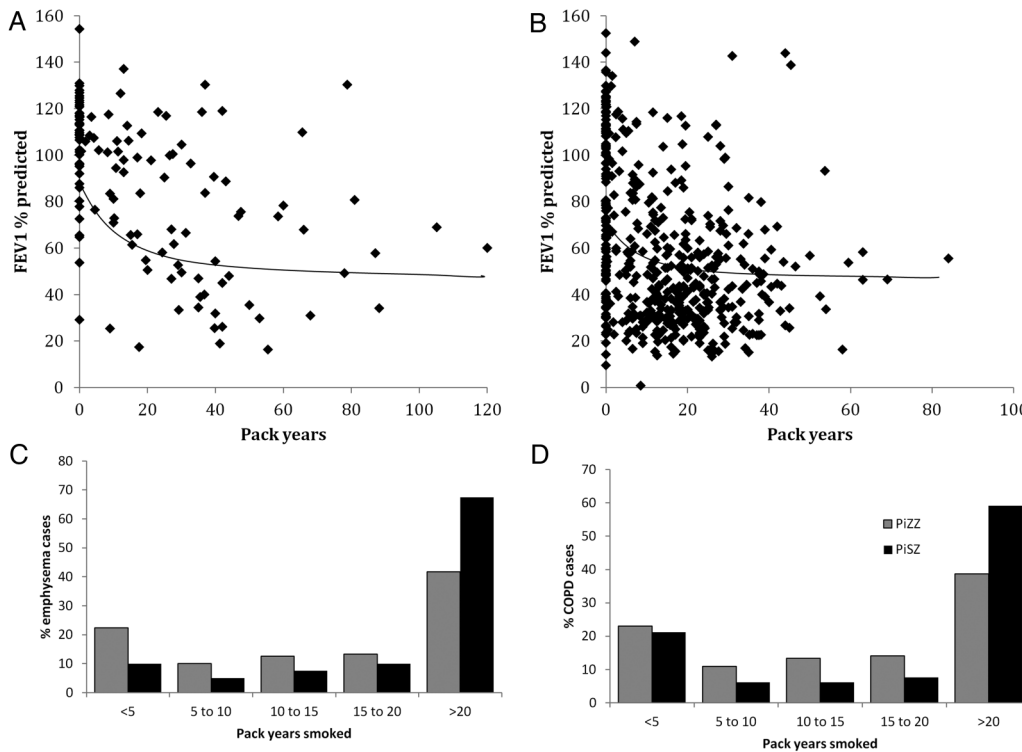


Figure 1 Relationship between pack-years smoked and lung function in alpha-1 antitrypsin deficiency. There was a linear relationship between baseline FEV1 and pack-years up to a threshold of 30 pack-years in PiSZ patients, which then disappeared (A; $r=-0.43$ at <30 , $r=-0.02$ at ≥ 30 pack-years). The relationship was similar in PiZZ patients, but with a lower pack-year threshold (B; $r=-0.43$ at <20 , $r=0.04$ at ≥ 20 pack-years). Illustrative smoothed regression lines are shown on the graphs. Both emphysema (C) and COPD (D) were more common at exposures <20 pack-years in PiZZ patients.

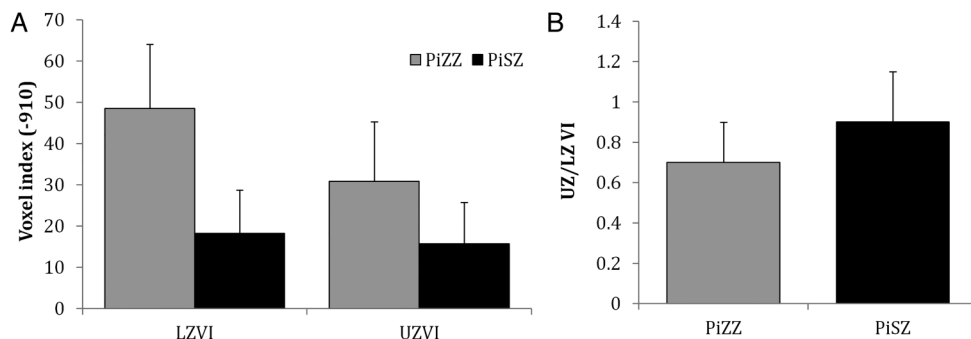


Figure 2 Characteristics of emphysema in alpha-1 antitrypsin deficiency patients. (A) CT density (VI-910) in upper and lower zones was worse in PiZZ with differences being marked in lower zone ($p < 0.01$) and marginal in upper zone. Voxel index (VI) at -910 is the proportion of lung voxels below -910 Hounsfield Units (HU). (B) UZ/LZVI: Lower values demonstrate predominance of basal emphysema in PiZZ ($p = 0.001$).

chronic bronchitis ($p = 0.09$), but not other phenotypes. Furthermore, interaction between AAT level and pack-years smoked was significant in a multivariable general linear model for FEV1 decline (one-tailed test $p = 0.026$), whereas AAT level alone and PiSZ*pack-years interaction were not (both one-tailed $p = 0.150$).

Comparison with usual COPD

The primary reason for inclusion of PiMM patients was to see whether their phenotype was similar to PiSZ, hence univariable analyses were restricted to PiSZ index cases, as this eliminated ascertainment differences. Logistic regressions adjusting for age, smoke exposure and baseline FEV1 (different in univariable analyses; table 1) demonstrated that PiSZ patients had a similar risk of emphysema ($p = 0.274$) and bronchiectasis ($p = 0.344$), but lower risk of chronic bronchitis (OR 0.36 (0.18–0.72); $p = 0.016$). Cox regression confirmed better survival in PiSZ patients (figure 4B).

DISCUSSION

We have confirmed that PiSZ patients have a lower risk of lung disease and are less susceptible to effects of cigarette smoke than PiZZ individuals, exhibiting a clinical phenotype, which is in many cases similar to usual PiMM COPD. Interpreting the prognostic data is more difficult due to issues of power and baseline differences between groups.

Pulmonary phenotype

This study is the largest to date on PiSZ AATD. In our earlier study, lung function and CT scan appearances concurred with those reported here; many PiSZ patients exhibited no emphysema, and many who did had upper-zone-dominant disease.⁸

This agrees with data from an earlier, small, British PiSZ cohort¹⁷ and with much of the past PiSZ literature. The expected number of UK PiSZ patients exceeds PiZZ,⁵ yet there are far fewer PiSZ known to the registry. This may reflect ascertainment bias since AAT testing possibly occurs more frequently in patients with COPD exhibiting classical AATD lung disease (ie, lower-zone-dominant emphysema). A missed diagnosis could have consequences since there is specific treatment for AATD lung disease in the form of AAT augmentation (available in the USA and many European countries, albeit not yet in the UK), which undiagnosed patients would not receive. Most international AATD guidelines specify that their scope is PiZZ patients or those with a circulating AAT level typical of PiZZ, and recommend the use of augmentation in the presence of emphysema and a specified level of FEV1.^{18–19} This would exclude almost 90% of our PiSZ patients on the basis of AAT level.⁶ The main effect of augmentation is on progression of emphysema, best measured by CT densitometry,²⁰ although effects on FEV1 decline have been reported in non-randomised studies.²¹ Progression of emphysema on augmentation varies according to lung zone,¹¹ hence augmentation might benefit PiSZ patients who exhibit lower-zone-dominant disease and low AAT levels (equivalent to PiZZ). Our data examining the threshold AAT level of $11 \mu\text{M}$ support this, although specific studies in PiSZ patients would be required to determine this with confidence.

We also confirmed that PiSZ patients are less susceptible to smoke. A direct relationship between FEV1 and smoke exposure occurred below 30 pack-years in PiSZ and 20 pack-years in PiZZ patients. The reasons for this are discussed elsewhere,⁹ one of which is a ‘floor effect’, in which lung function has dropped sufficiently by the threshold that in many patients either no further decline occurs or they die. A smaller amount of ‘resistant’ smokers is also seen, adding to the lack of correlation at higher smoke exposures. While the data for the specific threshold were weak, the proportion of PiSZ patients developing emphysema or COPD at exposures < 20 pack-years was also lower, supporting its existence. Moreover, the American NHLBI cohort reported the importance of smoking in disease development in PiSZ patients with AAT $< 11 \mu\text{M}$, alongside less lung function impairment than in PiZZ, thus supporting our data.²² A difference in the threshold at which smoke susceptibility occurs between PiSZ and ZZ patients is consistent with current understanding of AAT–neutrophil elastase (NE) interactions, whereby the area of obligate damage is exponentially related to AAT level, rising markedly at $< 11 \mu\text{M}$,²³ and therefore leading to a critical area of lung damage more quickly in PiZZ. Interestingly, among the PiSZ never smokers clinically significant

Table 2 FEV1 decline (mL/year) in PiSZ and PiZZ alpha-1 antitrypsin deficiency

Variable	PiZZ	PiSZ	p Value
Current smoker	–16.0 (–8.1 to –56.6)	–59.6 (–16.8 to –79.4)	0.287
Ex smoker	–37.0 (–10.0 to –76.1)	–41.8 (–26.6 to –88.5)	0.155
Never smoker	–41.6 (–3.4 to –77.7)	–33.6 (–11.9 to –66.9)	0.542
COPD	–38.2 (–9.2 to –76.1)	–52.3 (–24.4 to –94.3)	0.818
No COPD	–34.7 (–7.5 to –71.8)	–35.1 (–13.6 to –67.8)	0.120
Lung index case	–38.1 (–8.6 to –85.2)	–41.8 (–19.7 to –85.4)	0.278
Non-lung index case	–38.1 (–7.9 to –82.4)	–36.5 (–14.2 to –67.7)	0.879

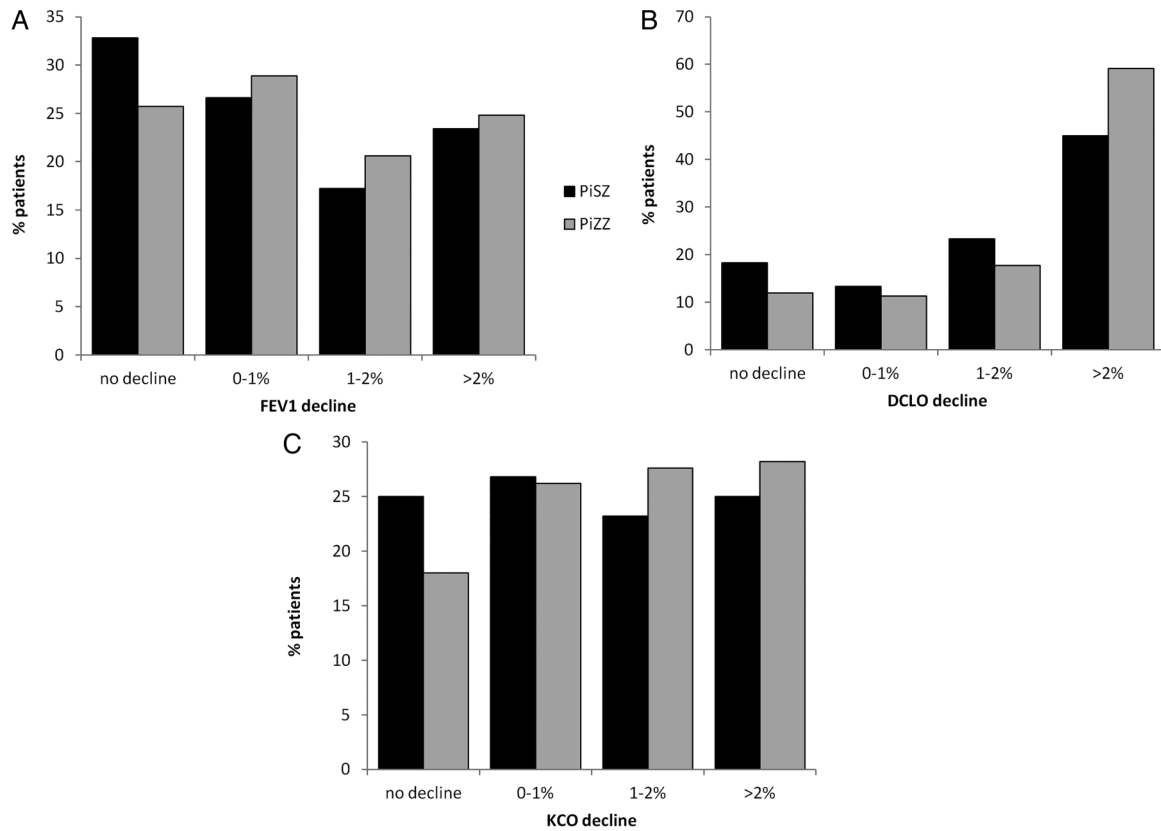


Figure 3 Decline in lung function in alpha-1 antitrypsin deficiency. The graphs show the proportion of patients with lung function that did not deteriorate, decreased by up to 1% of predicted (ie, fell from 50% predicted in year 1 to $\geq 49\%$ predicted in year 2), between 1% and 2% predicted and $>2\%$ predicted per year. (A) FEV1, (B) DLCO and (C) carbon monoxide transfer coefficient (KCO). There were no differences in the proportion of patients in each group (FEV1, $p=0.67$; DLCO, $p=0.22$; KCO= 0.60).

emphysema was uncommon, implying that in the absence of smoke it is not a risk factor—similar to PiMZ.²⁴

We then compared PiSZ and MM patients to test our hypothesis that there would be a degree of phenotypic overlap,

perhaps sufficient to make the two groups indistinguishable, thus accounting for missed diagnoses (relative to PiZZ). The potential impact of individuals with AATD diagnosed through family screening, who were not present in the usual COPD

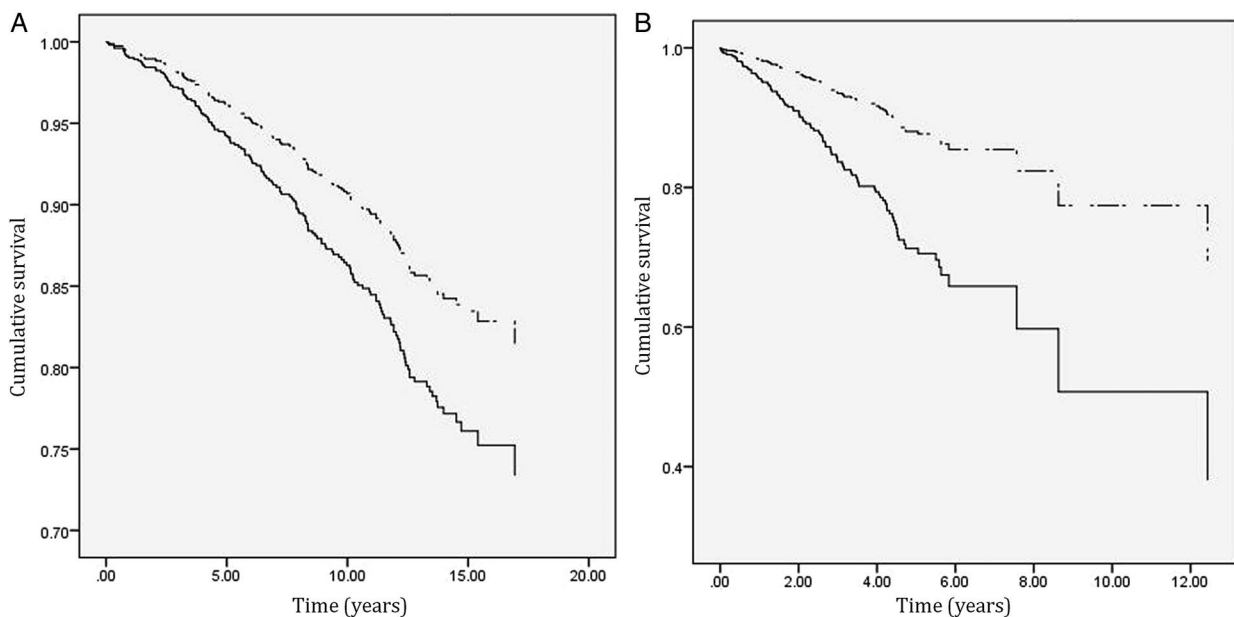


Figure 4 Cox regression demonstrating survival. (A) PiSZ (dashed line) versus PiZZ (solid line); analysis adjusted for baseline FEV1, age, index status and smoking. PiSZ patients had better survival ($p=0.017$; log rank). (B) Lung index PiSZ (dashed line) versus PiMM (solid line); analysis adjusted for baseline FEV1, age and pack-years smoked. PiSZ patients had better survival ($p<0.001$; log rank).

group, meant that statistical analyses compared lung index cases —risks of emphysema were similar, after adjustment for smoke exposure and age. This is consistent with PiSZ patients outside our cohorts being diagnosed less readily.

Prognosis

Our data implied that disease progression in PiSZ patients might be similar to PiZZ. This result was unexpected; PiSZ patients were generally better at baseline, which we have shown to relate to more rapid FEV1 decline,^{10 16} while PiZZ patients were worse, which we have shown to relate to more rapid gas transfer decline.^{10 16} We therefore expected differences to occur in raw decline values, which would be less apparent after adjustment for baseline lung function and smoke exposure. However, raw values were similar and remained so regardless of the method by which we attempted to control for baseline differences. This may be explicable if AAT level is more critical than PiSZ genotype; consistent with this our data implied that AAT level, rather than PiSZ genotype, interacted with smoke exposure in the lung function decline models. AAT level does vary among PiSZ patients, presumably due to modifying effects of other genes or environmental factors, which is one reason why current guidelines for treatment take this feature into account.

No prior PiSZ studies have reported FEV1 decline (see online supplementary table 1); however, there are data available on decline in PiZZ, where loss of FEV1 was generally 60–80 mL/year.^{15 25–28} This is somewhat higher than the median in our PiZZ patients. Notably, the largest prior PiZZ study²⁵ (see online supplementary table 4) exhibited both starting FEV1 (49% predicted) and FEV1 decline similar to many of our PiZZ patients (54 mL/year vs 56.3 mL/year in our FEV1 50–80% subgroup). Our lower median is explicable by cohort characteristics. There are two groups in whom FEV1 decline is known to be lower—those with FEV1 <30% predicted¹⁰ or with no emphysema on their CT, who comprise 22.5% and 26.3% of our AATD cohort, respectively. High rates of patients with FEV1 <30% account for the low decline seen in our PiZZ current smokers, whose minimum FEV1 was just 12%, thus had no lung function to lose. Furthermore, our method of determining decline may be more accurate compared with previous studies, which calculated decline from just two data points,²⁵ or over only 2 years in some patients.²⁸ Thus we feel our decline data are accurate and comparable to other published data, once our cohorts' characteristics are taken into account. However, we acknowledge that a survivor bias, and relatively small numbers, in the decline analyses may have limited power to detect true differences between PiSZ and ZZ patients. While we tried to adjust for baseline differences in lung function (eg, 11.3% of patients had FEV1 <30% predicted in the PiSZ decline group compared with 22.5% of the PiZZ), statistical adjustment could have been incapable of fully accounting for differences. To overcome this, we attempted matching (see online supplementary data), which again showed no difference in decline. However, high smoke exposures in some PiSZ made matching imperfect also. Further studies of decline in PiSZ patients are therefore indicated.

Despite apparently similar lung function decline, subsequent survival was better in PiSZ compared with PiZZ. There are several possible reasons for these apparently inconsistent results. First, declining lung function may not be a good predictor of survival; we have recently shown that declining CT densitometry may be a better measure.²⁹ Alternatively, it may be that neither statistical adjustments nor matching were capable of fully compensating for baseline differences, such that better survival reflects their higher

starting point. One factor unlikely to have influenced the result is comorbidity, which did not differ between PiSZ and ZZ patients. Survival was worse in usual COPD than PiSZ patients, probably due to higher comorbidity burden attendant on greater smoke exposure, although we had insufficient data to test this hypothesis. The proportion of patients surviving 5 years was about 70% in usual COPD and between 90% and 95% in both PiSZ and ZZ individuals (figure 4). Since our AATD cohort is a national centre, and many patients travel some distance to be seen, there may be a survivor bias, which could have inflated the difference seen between PiSZ and MM. If present, it would have affected PiSZ and ZZ patients equally, hence their comparative survival result is more robust.

Strengths and limitations

The main strengths of our study are the large number of AATD patients, depth of clinical phenotyping and length of follow-up. Ideally we would have compared emphysema zone and lung function decline between PiSZ and MM, as we did for PiSZ versus ZZ, but were limited by lack of data. However, its utility for clinical management would be small since optimal management of COPD should occur in both usual COPD and COPD due to PiSZ AATD. The main difference would emerge if augmentation were available, for which the more informative longitudinal PiSZ comparison is with PiZZ patients. Further work to clarify whether differences in neutrophil function occur between PiSZ and MM patients, as they do between PiZZ and MM,³⁰ whether NE activity differs^{31 32} between groups and the utility of augmentation in PiSZ patients may be valuable follow-up studies.

Acknowledgements The authors would like to thank all staff at the UK AATD registry, particularly Di Griffiths and Ross Edgar, for their help in data collection, and all staff at Queen Elizabeth and Heartlands Hospitals who helped with data collection for the WMCC and CDRC cohorts.

Contributors CEG, SV, DM and JAH collected data. CEG, SV and AMT analysed data. CEG and AMT drafted the manuscript. RAS and AMT reviewed the manuscript. AMT acts as guarantor.

Funding AMT has current funding from the Alpha 1 Foundation, Linde REAL fund, MRC and EPSRC. CG is funded by the West Midlands Chest Fund.

Competing interests The UK AATD registry has received unrestricted and/or investigator initiated project funds within the last five years from two manufacturers of AAT augmentation therapy: Grifols Biotherapeutics and CSL Behring.

Patient consent Obtained.

Ethics approval South Bham (AATD and WMCC), North West (CDRC).

Provenance and peer review Not commissioned; externally peer reviewed.

Data sharing statement There is a manuscript under submission to AATD survival data; we have referenced the published abstract of the data, but if the full manuscript is accepted we would like to be able to add the full paper so that readers may more easily access the results.

REFERENCES

- 1 Salahuddin P. Genetic variants of alpha1-antitrypsin. *Curr Protein Pept Sci* 2010;11:101–17.
- 2 Laurell CB, Eriksson S. The electrophoretic alpha 1 globulin pattern of serum in alpha 1 antitrypsin deficiency. *Scand J Clin Lab Invest* 1963;15:132–40.
- 3 Dahl M, Hersh CP, Ly NP, et al. The protease inhibitor Pi*S allele and COPD: a meta-analysis. *Eur Respir J* 2005;26:67–76.
- 4 Bartmann K, Fooke-Achterrath M, Koch G, et al. Heterozygosity in the Pi-system as a pathogenetic cofactor in chronic obstructive pulmonary disease (COPD). *Eur J Respir Dis* 1985;66:284–96.
- 5 Blanco I, de Serres FJ, Fernandez-Bustillo E, et al. Estimated numbers and prevalence of Pi*S and Pi*Z alleles of alpha1-antitrypsin deficiency in European countries. *Eur Respir J* 2006;27:77–84.
- 6 Ferrarotti I, Thun GA, Zorzetto M, et al. Serum levels and genotype distribution of alpha1-antitrypsin in the general population. *Thorax* 2012;67:669–74.

- 769 7 Takubo Y, Guerassimov A, Ghezzi H, *et al.* Alpha1-antitrypsin determines the
770 pattern of emphysema and function in tobacco smoke-exposed mice: parallels with
771 human disease. *Am J Respir Crit Care Med* 2002;166(12 Pt 1):1596–603. 833
- 772 8 Holme J, Stockley RA. CT scan appearance, densitometry, and health status in
773 protease inhibitor SZ alpha1-antitrypsin deficiency. *Chest* 2009;136:1284–90. 834
- 774 9 Castaldi PJ, DeMeo D, Kent DM, *et al.* Development of predictive models for airflow
775 obstruction in alpha 1 antitrypsin deficiency. *Am J Epidemiol* 2009;170:1005–13. 835
- 776 10 Pillai AP, Turner AM, Stockley RA. Relationship of the 2011 Global Initiative for
777 Chronic Obstructive Lung Disease strategy to clinically relevant outcomes in
778 individuals with alpha1-antitrypsin deficiency. *Ann Am Thorac Soc* 2014;11:859–64. 836
- 779 11 Parr DG, Sevenoaks M, Deng C, *et al.* Detection of emphysema progression in
780 alpha 1-antitrypsin deficiency using CT densitometry; methodological advances.
781 *Respir Res* 2008;9:21. 837
- 782 12 Wood AM, Harrison RM, Semple S, *et al.* Outdoor air pollution is associated with
783 rapid decline of lung function in alpha-1-antitrypsin deficiency. *Occup Environ Med*
784 2010;67:556–61. 838
- 785 13 Wood AM, de Pablo P, Buckley CD, *et al.* Smoke exposure as a determinant of
786 auto-antibody titre in AATD and COPD. *Eur Respir J* 2011;37:32–8. 839
- 787 14 Dawkins P, Wood A, Nightingale P, *et al.* Mortality in alpha-1-antitrypsin deficiency
788 in the United Kingdom. *Respir Med* 2009;103:1540–7. 840
- 789 15 Seersholm N, Kok-Jensen A, Dirksen A. Decline in FEV1 among patients with severe
790 hereditary alpha 1-antitrypsin deficiency type PiZ. *Am J Respir Crit Care Med*
791 1995;152(6 Pt 1):1922–5. 841
- 792 16 Dawkins PA, Dawkins CL, Wood AM, *et al.* Rate of progression of lung function
793 impairment in alpha1-antitrypsin deficiency. *Eur Respir J* 2009;33:1338–44. 842
- 794 17 Hutchison DC, Tobin MJ, Cook PJ. Alpha 1 antitrypsin deficiency: clinical and
795 physiological features in heterozygotes of Pi type SZ. A survey by the British
796 Thoracic Association. *Br J Dis Chest* 1983;77:28–34. 843
- 797 18 American Thoracic Society, European Respiratory Society. American Thoracic Society/
798 European Respiratory Society statement: standards for the diagnosis and
799 management of individuals with alpha-1 antitrypsin deficiency. *Am J Respir Crit*
800 *Care Med* 2003;168:818–900. 844
- 801 19 Marciniuk DD, Hernandez P, Balter M, *et al.* Alpha-1 antitrypsin deficiency targeted
802 testing and augmentation therapy: a Canadian Thoracic Society clinical practice
803 guideline. *Can Respir J* 2012;19:109–16. 845
- 804 20 Dirksen A, Piitulainen E, Parr DG, *et al.* Exploring the role of CT densitometry:
805 a randomised study of augmentation therapy in alpha1-antitrypsin deficiency. *Eur Respir J* 2009;33:1345–53. 846
- 806 21 Chapman KR, Stockley RA, Dawkins C, *et al.* Augmentation therapy for alpha1
807 antitrypsin deficiency: a meta-analysis. *COPD* 2009;6:177–84. 847
- 808 22 Turino GM, Barker AF, Brantly ML, *et al.* Clinical features of individuals with Pi*SZ
809 phenotype of alpha 1-antitrypsin deficiency. alpha 1-Antitrypsin Deficiency Registry
810 Study Group. *Am J Respir Crit Care Med* 1996;154(6 Pt 1):1718–25. 848
- 811 23 Campbell EJ, Campbell MA, Boukedes SS, *et al.* Quantum proteolysis by
812 neutrophils: implications for pulmonary emphysema in alpha 1-antitrypsin deficiency. *J Clin Invest* 1999;104:337–44. 849
- 813 24 Molloy K, Hersh CP, Morris VB, *et al.* Clarification of the risk of chronic obstructive
814 pulmonary disease in alpha1-antitrypsin deficiency PiMZ heterozygotes. *Am J Respir*
815 *Crit Care Med* 2014;189:419–27. 850
- 816 25 Survival and FEV1 decline in individuals with severe deficiency of alpha1-antitrypsin.
817 The Alpha-1-Antitrypsin Deficiency Registry Study Group. *Am J Respir Crit Care Med*
818 1998;158:49–59. 851
- 819 26 Hutchison DC, Cooper D. Alpha-1-antitrypsin deficiency: smoking, decline in lung
820 function and implications for therapeutic trials. *Respir Med* 2002;96:872–80. 852
- 821 27 Wu MC, Eriksson S. Lung function, smoking and survival in severe alpha
822 1-antitrypsin deficiency, PiZZ. *J Clin Epidemiol* 1988;41:1157–65. 853
- 823 28 Burdon JG, Brenton S, Hocking V, *et al.* Decline in FEV1 in patients with
824 PiZ alpha-1-antitrypsin deficiency: the Australian experience. *Respirology*
825 2002;7:51–5. 854
- 826 29 Green CE, Turner AM. Lung density decline predicts survival and quality of life outcomes
827 in patients with Alpha 1 antitrypsin deficiency. *Thorax* 2014;69(Suppl 2):A12. 855
- 828 30 Sapey E, Wood AM, Ahmad A, *et al.* Tumor necrosis factor-[alpha] rs361525
829 polymorphism is associated with increased local production and downstream
830 inflammation in chronic obstructive pulmonary disease. *Am J Respir Crit Care Med*
831 2010;182:192–9. 856
- 832 31 Carter RI, Mumford RA, Treonze KM, *et al.* The fibrinogen cleavage product
833 Aalpha-Val360, a specific marker of neutrophil elastase activity in vivo. *Thorax*
834 2011;66:686–91. 857
- 835 32 Carter RI, Ungurs MJ, Mumford RA, *et al.* Aalpha-Val360: a marker of neutrophil
836 elastase and COPD disease activity. *Eur Respir J* 2013;41:31–8. 858
- 837 839
- 838 840
- 839 841
- 840 842
- 841 843
- 842 844
- 843 845
- 844 846
- 845 847
- 846 848
- 847 849
- 848 850
- 849 851
- 850 852
- 851 853
- 852 854
- 853 855
- 854 856
- 855 857
- 856 858
- 857 859
- 858 860
- 859 861
- 860 862
- 861 863
- 862 864
- 863 865
- 864 866
- 865 867
- 866 868
- 867 869
- 868 870
- 869 871
- 870 872
- 871 873
- 872 874
- 873 875
- 874 876
- 875 877
- 876 878
- 877 879
- 878 880
- 879 881
- 880 882
- 881 883
- 882 884
- 883 885
- 884 886
- 885 887
- 886 888
- 887 889
- 888 890
- 889 891
- 890 892
- 891 893
- 892 894
- 893 895
- 894 896