

UNIVERSITY OF BIRMINGHAM

Research at Birmingham

Hypoxia lowers SLC30A8/ZnT8 expression and free cytosolic Zn²⁺ in pancreatic beta cells

Gerber, Philipp A; Bellomo, Elisa A; Hodson, David; Meur, Gargi; Solomou, Antonia; Mitchell, Ryan K; Hollinshead, Michael; Chimienti, Fabrice; Bosco, Domenico; Hughes, Stephen J; Johnson, Paul; Rutter, Guy A

DOI:

[10.1007/s00125-014-3266-0](https://doi.org/10.1007/s00125-014-3266-0)

License:

Creative Commons: Attribution (CC BY)

Document Version

Publisher's PDF, also known as Version of record

Citation for published version (Harvard):

Gerber, PA, Bellomo, EA, Hodson, DJ, Meur, G, Solomou, A, Mitchell, RK, Hollinshead, M, Chimienti, F, Bosco, D, Hughes, SJ, Johnson, PRV & Rutter, GA 2014, 'Hypoxia lowers SLC30A8/ZnT8 expression and free cytosolic Zn²⁺ in pancreatic beta cells', *Diabetologia*, vol. 57, no. 8, pp. 1635-44. <https://doi.org/10.1007/s00125-014-3266-0>

[Link to publication on Research at Birmingham portal](#)

Publisher Rights Statement:

Eligibility for repository: Checked on 09/12/2015

General rights

Unless a licence is specified above, all rights (including copyright and moral rights) in this document are retained by the authors and/or the copyright holders. The express permission of the copyright holder must be obtained for any use of this material other than for purposes permitted by law.

- Users may freely distribute the URL that is used to identify this publication.
- Users may download and/or print one copy of the publication from the University of Birmingham research portal for the purpose of private study or non-commercial research.
- User may use extracts from the document in line with the concept of 'fair dealing' under the Copyright, Designs and Patents Act 1988 (?)
- Users may not further distribute the material nor use it for the purposes of commercial gain.

Where a licence is displayed above, please note the terms and conditions of the licence govern your use of this document.

When citing, please reference the published version.

Take down policy

While the University of Birmingham exercises care and attention in making items available there are rare occasions when an item has been uploaded in error or has been deemed to be commercially or otherwise sensitive.

If you believe that this is the case for this document, please contact UBIRA@lists.bham.ac.uk providing details and we will remove access to the work immediately and investigate.

Hypoxia lowers *SLC30A8*/ZnT8 expression and free cytosolic Zn²⁺ in pancreatic beta cells

Philipp A. Gerber · Elisa A. Bellomo · David J. Hodson · Gargi Meur ·
Antonia Solomou · Ryan K. Mitchell · Michael Hollinshead · Fabrice Chimienti ·
Domenico Bosco · Stephen J. Hughes · Paul R. V. Johnson · Guy A. Rutter

Received: 13 January 2014 / Accepted: 23 April 2014 / Published online: 28 May 2014
© The Author(s) 2014. This article is published with open access at Springerlink.com

Abstract

Aims/hypothesis Hypoxic damage complicates islet isolation for transplantation and may contribute to beta cell failure in type 2 diabetes. Polymorphisms in the *SLC30A8* gene, encoding the secretory granule zinc transporter 8 (ZnT8), influence type 2 diabetes risk, conceivably by modulating cytosolic Zn²⁺ levels. We have therefore explored the role of ZnT8 and cytosolic Zn²⁺ in the response to hypoxia of pancreatic islet cells.

Methods Human, mouse or rat islets were isolated and exposed to varying O₂ tensions. Cytosolic free zinc was measured using the adenovirally expressed recombinant targeted zinc probe eCALWY4. Gene expression was measured using quantitative (q)RT-PCR, western (immuno-) blotting or immunocytochemistry. Beta cells were identified by insulin immunoreactivity.

Results Deprivation of O₂ (1% vs 5% or 21%) for 24 h lowered free cytosolic Zn²⁺ concentrations by ~40% ($p < 0.05$) and ~30% ($p < 0.05$) in mouse and human islet cells, respectively. Hypoxia similarly decreased *SLC30A8* mRNA expression in islets, and immunoreactivity in beta cells. Implicating lowered ZnT8 levels in the hypoxia-induced fall in cytosolic Zn²⁺, genetic ablation of *Slc30a8* from mouse islets lowered cytosolic Zn²⁺ by ~40% ($p < 0.05$) and decreased the induction of metallothionein (*Mt1*, *Mt2*) genes. Cell survival in the face of hypoxia was enhanced in small islets of older (>12 weeks) *Slc30a8* null mice vs controls, but not younger animals.

Conclusions/interpretation The response of pancreatic beta cells to hypoxia is characterised by decreased *SLC30A8* expression and lowered cytosolic Zn²⁺ concentrations. The

Electronic supplementary material The online version of this article (doi:10.1007/s00125-014-3266-0) contains peer-reviewed but unedited supplementary material, which is available to authorised users.

P. A. Gerber · E. A. Bellomo · D. J. Hodson · G. Meur ·
A. Solomou · R. K. Mitchell · G. A. Rutter (✉)
Section of Cell Biology, Division of Diabetes, Endocrinology and
Metabolism, Department of Medicine, Imperial College London,
London W12 ONN, UK
e-mail: g.rutter@imperial.ac.uk

P. A. Gerber
Division of Endocrinology, Diabetes and Clinical Nutrition,
University Hospital Zurich, Zurich, Switzerland

M. Hollinshead
Section of Microscopy, Department of Medicine,
Imperial College London, London, UK

F. Chimienti
Mellitech, Grenoble, France

D. Bosco
Cell Isolation and Transplantation Centre, Department of Surgery,
Geneva University Hospital, Geneva, Switzerland

S. J. Hughes · P. R. V. Johnson
Nuffield Department of Surgical Sciences, University of Oxford,
Oxford, UK

S. J. Hughes · P. R. V. Johnson
DRWF Human Islet Isolation Facility, Oxford Centre for Diabetes,
Endocrinology and Metabolism, Oxford, UK

S. J. Hughes · P. R. V. Johnson
Oxford NIHR Biomedical Research Centre, Oxford, UK

dependence on ZnT8 of hypoxia-induced changes in cell survival may contribute to the actions of *SLC30A8* variants on diabetes risk in humans.

Keywords Hypoxia · Metallothionein · Type 2 diabetes · Zinc · Zinc transporter

Abbreviations

DMOG	Dimethylxalylglycine
HIF	Hypoxia-inducible factor
KHB	Krebs Hepes-bicarbonate
MCT4	Solute carrier family 16 (monocarboxylic acid transporters), member 3
PI	Propidium iodide
TPEN	<i>N,N,N',N'</i> -tetrakis(2-pyridylmethyl) ethylenediamine
WT	Wild-type
ZIP	Zinc importer
ZnT8	Zinc transporter 8

Introduction

Pancreatic beta cells are highly dependent on oxidative metabolism for ATP synthesis, particularly at elevated glucose concentrations [1, 2]. Correspondingly, hypoxia has been shown to influence islet survival and function during transplantation [3, 4]. Moreover, as many as 25% of islets are exposed in vivo to low oxygenation [5], suggesting that hypoxia acts as a regulator of islet function under physiological conditions. Indeed, glucose-induced oxygen consumption creates intracellular hypoxia sufficient to activate hypoxia-inducible factors (HIFs) in rat beta cells [6], an effect that is increased in diabetic animals [7] and which may contribute to defective insulin secretion in some forms of type 2 diabetes.

Hypoxic stress induces genes such as metallothionein (*MTI/2*) as a defence against large changes in free metal ion concentration [8], which may affect the activity of anti-oxidative enzymes [9]. Whether genetic factors influence the susceptibility of pancreatic beta cells to hypoxia has not previously been explored. Suggesting this as a possibility, genome-wide association studies (GWAS) have revealed that a non-synonymous single nucleotide polymorphism (rs13266634) in the *SLC30A8* gene (encoding the secretory granule-resident zinc transporter 8 [ZnT8]) is associated with a ~20% increase in disease risk per allele [10–12]. *SLC30A8* expression is largely confined to pancreatic beta and alpha cells [13], and is required for the accumulation of zinc into the secretory granule, where it binds to insulin [14, 15]. Consequently, mice inactivated systemically for *Slc30a8* display profound changes in insulin crystal formation and secretory granule morphology [14, 15], consistent with the lower zinc-

transporting activity of the transporter isoform encoded by the risk allele [15]. Defective insulin secretion is seen in global *ZnT8*^{-/-} mice on some [15], but not all, backgrounds [14, 16, 17], and mice with selectively deleted beta cell *Slc30a8* display marked changes in insulin secretion and glucose tolerance [18]. Whether *Slc30a8* influences cytosolic, as well as granular, Zn²⁺ concentrations has not previously been examined because of the uncertain subcellular targeting of the probes used in earlier work [15].

Monitoring cytosolic Zn²⁺ with the molecularly targeted recombinant probe eCALWY4 [19], the present study aimed to explore the impact of hypoxia on Zn²⁺ homeostasis, and the expression of *SLC30A8*/ZnT8 and other zinc transporters and importers, in human and rodent beta cells.

Methods

Reagents RPMI and CMRL medium, ZnCl₂, *N,N,N',N'*-tetrakis(2-pyridylmethyl) ethylenediamine (TPEN), 2-mercaptopyridine *N*-oxide (pyrithione), poly-L-lysine and dimethylxalylglycine (DMOG) were from Sigma (Gillingham, UK), TRIzol reagent was from Applied Biosystems / Life Technologies (Paisley, UK).

Mouse and rat strains and maintenance Female CD1 mice and male Wistar rats were purchased from Harlan (Bicester, UK/Itingen, Switzerland). Global *ZnT8*^{-/-} mice [15] on a mixed SV129/C57BL/6 background and 129S7/SvEvBrd-*Mt1*^{tm1Bri}*Mt2*^{tm1Bri}/J mice (purchased from Jackson Laboratory, Bar Harbor, ME, USA) have previously been described [20]. Mice were killed at 10–12 weeks (–15 weeks for cell death analysis) of age by cervical dislocation as approved by the UK Home Office Animal Scientific Procedures Act, 1986 (PPL 70/7349), with ethics approvals.

Islet isolation, culture, infection and dissociation Human islets were isolated from six beating-heart donors (electronic supplementary material [ESM] Table 1) with appropriate local ethical permissions (Charing Cross Research Ethics Committee reference 07/H0711/114) in Oxford, UK [21] or in Geneva, Switzerland [22], and maintained in RPMI medium containing 5.5 mmol/l glucose and 10% (vol./vol.) FCS. Mouse and rat islets were prepared as in Ravier and Rutter [23]. Islets were dissociated by 10 min incubation in Hanks'-based enzyme-free cell dissociation buffer (Gibco, Invitrogen, Paisley, UK), plated onto 24 mm sterile coverslips treated with 0.1% poly-L-lysine and allowed to recover overnight in RPMI medium containing 11 mmol/l glucose.

Hypoxia exposure Pancreatic islets or beta cells were exposed to hypoxia (1% O₂, 5% CO₂, 94% N₂), normoxia (21% O₂,

5% CO₂, 74% N₂) or other oxygen concentrations using a tissue culture incubator with adjustable O₂ or a modular incubator chamber (Billups-Rothenberg, del Mar, CA, USA).

Imaging of free cytosolic Zn²⁺ concentrations Adenovirus expressing the recombinant Zn²⁺ probe eCALWY-4 was generated as previously described [24]. Virus was added to dissociated islet cells for 4 h. The medium was then changed, and cells were allowed to express the protein for 48 h. For imaging, cells were washed twice in Krebs HEPES-bicarbonate (KHB) buffer (140 mmol/l NaCl, 3.6 mmol/l KCl, 0.5 mmol/l NaH₂PO₄, 0.2 mmol/l MgSO₄, 1.5 mmol/l CaCl₂, 10 mmol/l HEPES [pH 7.4], 2 mmol/l NaHCO₃), 11 mmol/l glucose, pre-equilibrated with 74:21:5 N₂:O₂:CO₂ (normoxia) or 94:1:5 N₂:O₂:CO₂ (hypoxia). Zn²⁺ imaging was carried out as described previously [19], with perfusion of the infected beta cell with buffer subsequently supplemented with 50 μmol/l TPEN and then 5 μmol/l pyrithione/100 μmol/l ZnCl₂ (ZnPyr) (Fig. 1a, b). For hypoxia-treated cells, care was

taken to keep oxygen tension low during microscopy by perfusing cells with oxygen-depleted solutions.

RNA extraction and qRT-PCR Total RNA from ~50 islets was obtained using TRIzol reagent and reverse-transcribed into cDNA using a high-capacity cDNA reverse transcription kit (Applied Biosystems). cDNA (equivalent to 10–20 ng of RNA) was subject to qRT-PCR using Power SYBR Green master mix (Applied Biosystems/Life Technologies) in a 7500 fast real-time PCR system (Applied Biosystems/Life Technologies) and analysed by the comparative C_t method (primers are shown in ESM Table 2). The expression of target genes was normalised to the expression of cyclophilin A.

Protein extraction and western (immuno-) blotting analysis After exposure to normoxia or hypoxia for 24 h, ~200 islets were washed and lysed in ice-cold radioimmune precipitation assay buffer. Total protein extracts (30 μg) were resolved by SDS-PAGE (12% vol./vol. acrylamide) and transferred to PVDF membranes, followed by immunoblotting with rabbit anti-rodent ZnT8 antibody (1:200, Mellitech, Grenoble, France), and mouse monoclonal anti-tubulin (1:5,000, Sigma clone B-5-1-2) antibodies. Secondary horseradish peroxidase (HRP)-linked anti-rabbit antibodies (1:10,000, GE Healthcare, Little Chalfont, UK) were revealed by using ECL detection reagent (GE Healthcare).

Immunofluorescence Cells were fixed in 3.7% paraformaldehyde and permeabilised in 0.1% Triton X-100 before immunostaining with a polyclonal anti-swine insulin antibody (1:200, DakoCytomation, Ely, UK), anti-glucagon antibody (G2654, Sigma) and anti-rodent human/rodent ZnT8 antibody overnight at 4°C. Alexa-coupled secondary antibodies (Invitrogen) were used to reveal the primary antibody staining. Confocal imaging was performed as described elsewhere [15].

Overexpression experiments INS-1 (832/13) rat beta cells were plated onto 24 mm cover slips and transfected using Lipofectamine 2000 (Invitrogen) with 0.5 μg/well of plasmid encoding eCALWY-4 and 1 μg/well of a construct containing ZnT8 fused in-frame with mCherry (A. Pramatarova, McGill University, Montreal, Canada). At 48 h after transfection, cytosolic Zn²⁺ was imaged as above.

Dead:live cell assay Islets were incubated for 15 min in PBS containing 3 μmol/l calcein-AM (Life Technologies) and 2.5 μmol/l propidium iodide (PI; Sigma-Aldrich) before detection of absorbance/emission at 491/525 nm and 561/620 nm, respectively. The islet area occupied by dead cells (PI) was calculated and expressed as a unitary ratio vs that occupied by all (live and dead) cells (PI plus calcein) using ImageJ (<http://imagej.nih.gov/ij/>) [25].

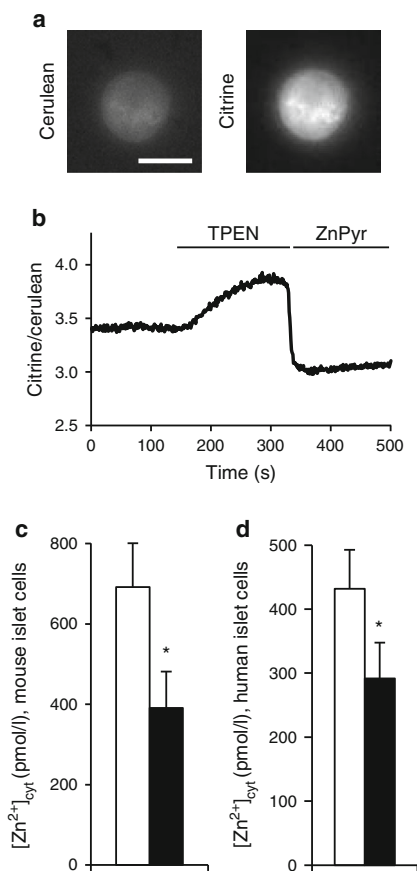


Fig. 1 Imaging the effect of hypoxia on $[Zn^{2+}]_{cyt}$ in dissociated islets. **(a)** $[Zn^{2+}]_{cyt}$ was measured in dissociated CD1 mouse islets as described in the Methods section. Scale bar, 10 μm. **(b)** A representative trace showing changes in citrine/cerulean fluorescence ratio; ZnPyr, 5 μmol/l pyrithione/100 μmol/l ZnCl₂. **(c, d)** Analysis of $[Zn^{2+}]_{cyt}$ in dissociated **(c)** CD1 mouse and **(d)** human islets exposed for 24 h to normoxia (white bars) or hypoxia (black bars). Bars represent mean ± SE. * $p < 0.05$

Transmission electron microscopy Isolated islets were fixed and analysed as previously described [26].

Insulin secretion and content Total and secreted insulin were measured after batch incubation of islets in KHB buffer as previously described [23].

Statistics Data are given as mean \pm SE or relative frequency. For comparison of continuous variables in two independent groups, Student's two-tailed *t* test was used. Bonferroni correction was applied for multiple comparisons. Multiple linear regression was used to assess the effect of different factors on islet cell death. A value of $p < 0.05$ was considered significant. Statistical analyses were performed using SPSS 18.0 software (SPSS, Chicago, IL, USA) and Excel 2010 software (Microsoft, Redmond, WA, USA).

Results

Exposure of pancreatic beta cells to hypoxia decreases cytosolic free Zn^{2+} concentrations and *Slc30a8/ZnT8* expression Given the previously described role of Zn^{2+} ions in the responses of other tissues to hypoxia and ischaemia [27], we first determined whether lowered oxygen tensions might affect cytosolic free Zn^{2+} concentrations ($[Zn^{2+}]_{cyt}$) in mouse or human islet cells by using eCALWY4. This recombinantly expressed probe is confined exclusively to the cytosolic compartment, and is expected chiefly to report changes in beta cells which predominate in the islet preparations used (>70% for rodent islets [28], ~60% in human islets [29]). A significant lowering in steady-state $[Zn^{2+}]_{cyt}$ of 30–40% in preparations from either species maintained under hypoxic conditions (Fig. 1c, d) was detected.

To determine whether changes in the expression of key regulators of intracellular Zn^{2+} homeostasis (zinc transporter [*Slc30/ZnT*] and zinc importer [*Slc39/ZIP*] [30] families) are involved in the hypoxia-induced changes in $[Zn^{2+}]_{cyt}$, their expression was measured in control or hypoxia-exposed islets. Whereas exposure to hypoxia for 24 h exerted no significant effect on the expression of members of the latter family in both mice and rats (ESM Fig. 1a, b), marked decreases were observed in levels of mRNA encoding *Slc30a8* in both mouse and human islets (Fig. 2a, b), as well as rat islets (ESM Fig. 1c). These changes were accompanied by the expected increase in the expression of the major islet metallothionein genes, *MT1* (also known as *MT1A*) (*Mt1*) and *MT2* (also known as *MT2A*) (*Mt2*) (Fig. 2b, c). Western blot analysis revealed a significant decrease in ZnT8 protein abundance during hypoxia exposure in mouse islets (Fig. 2d). Confirming that the above hypoxia-induced changes were unlikely to require the more severely hypoxic conditions that may exist in the islet core [3], or paracrine intra-islet signalling (e.g. by inflammatory signals

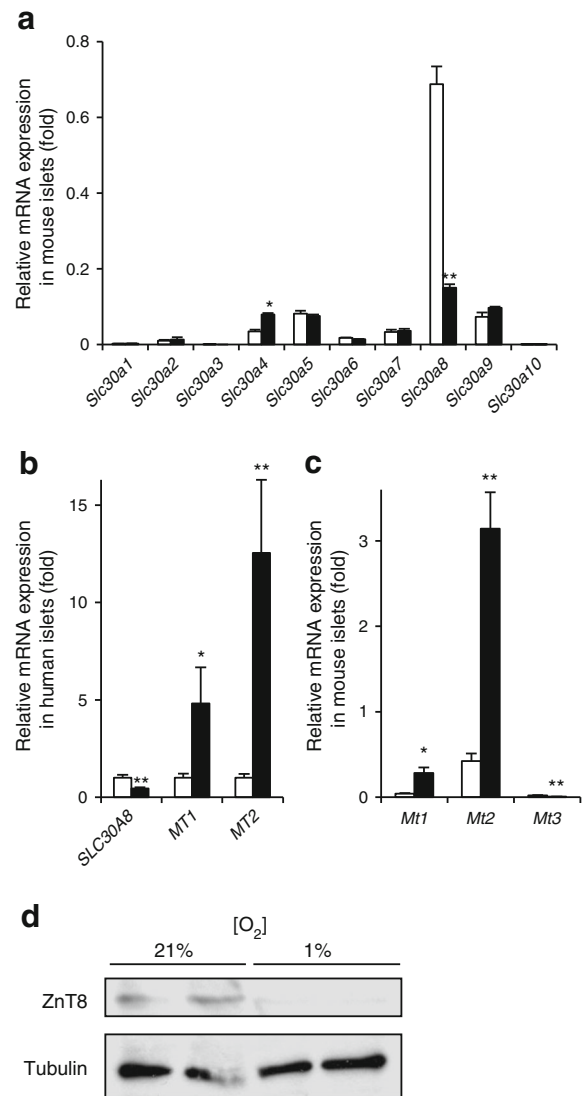


Fig. 2 The effect of hypoxia on the expression of genes implicated in Zn^{2+} homeostasis in pancreatic islets. **(a, c)** CD1 mouse and **(b)** human islets were incubated for 24 h at normoxia (white bars) or hypoxia (black bars). Expression of **(a)** *Slc30a1–10*, **(b)** *SLC30A8*, *MT1*, *MT2* and **(c)** *Mt1–Mt3* was determined (normalisation to the expression in normoxia **[b]**). Bars represent mean \pm SE. * $p < 0.05$ and ** $p < 0.01$. **(d)** Western blot analysis of CD1 mouse islets after incubation for 24 h at normoxia (21%) or hypoxia (1%)

[31], similar changes in the expression of *Slc30a8* and *Mt1/2* were apparent in dissociated mouse and human islet cells after exposure to hypoxia for 24 h (Fig. 3a, b). Correspondingly, a hypoxia-induced decrease in the expression of ZnT8 at the protein level was readily revealed by immunocytochemical analysis of individual insulin-positive mouse beta cells (Fig. 3c). To exclude hyperoxia-induced *Slc30a8* overexpression, we compared the effects of 1%, 5% and 21% oxygen concentrations. Exposure to 1%, but not 5%, ambient oxygen altered the expression of *Slc30a8* compared with 21% ambient oxygen (ESM Fig. 2a). The

hypoxia-induced changes in *Slc30a8* mRNA levels, as well as cytosolic free Zn^{2+} concentrations in mouse islets/islet cells, were largely reversible after 24 h of re-oxygenation (ESM Fig. 2b, c).

To exclude a decrease in cell viability as the chief reason for the reduced *Slc30a8*/ZnT8 expression, cell death was quantified 24 h after exposure to hypoxia. This analysis revealed a dead:live cell ratio of $12.4 \pm 1.9\%$ and $3.9 \pm 1.2\%$ in mouse and human islets, respectively, maintained under hypoxic conditions, compared with values of 0.7 ± 0.2 and $0.4 \pm 0.1\%$ in normoxia (ESM Fig. 3a, b). Correspondingly, hypoxia did not cause major changes in the morphology or ultrastructure of surviving islet cells as examined by electron microscopy (ESM Fig. 3c). As expected [32, 33], characterisation of hypoxic islets revealed reduced glucose-stimulated insulin secretion: insulin secretion ratio (release at high [16.7 mmol/l] glucose vs low [3.3 mmol/l] glucose) was only 4% of the ratio in normoxia (ESM Fig. 3d). Similarly, KCl-induced insulin secretion was also reduced in hypoxia (ESM Fig. 3d).

We sought next to determine whether the hypoxia-induced changes in the expression of *Slc30a8*/ZnT8 might reflect more global cellular dedifferentiation and/or alterations in the ratio of different islet cell types. Arguing against these possibilities, the expression of beta cell-enriched genes including insulin 1 (*Ins1*) and glucokinase (*Gck*) (also present in alpha cells) [34] did not change significantly during hypoxia and re-oxygenation treatment of mouse islets (Fig. 4a, b). By contrast, and as expected, large changes in the expression of the HIF1 α targets GLUT1 (*Slc2a1*) and solute carrier family 16 (monocarboxylic acid transporters), member 3 (MCT4) (*Slc16a3*) were observed (Fig. 4c, d). Similar to the expression of *Slc30a8* (Fig. 4e), expression of pancreatic duodenum homeobox-1 (*Pdx1*), a key transcription factor involved in

the regulation of insulin genes and of beta cell differentiation [35], was markedly decreased by hypoxia (Fig. 4f), and this change was not as rapidly reversed as those for the mainly HIF1 α -controlled genes (*Slc2a1* and *Slc16a3*) or the metallothioneins (*Mt1*, *Mt2*) (Fig. 4g, h).

To further explore a possible role for HIF1 α in controlling *Slc30a8*/ZnT8 expression, pancreatic islets were exposed to the HIF1 α -stabilising agent DMOG for 24 h. DMOG treatment did not significantly affect *Slc30a8* expression (ESM Fig. 4).

Regulation of *Slc30a8*/ZnT8 by hypoxia does not require changes in metallothionein gene expression The expression of *Slc30a8*/ZnT8 has previously been shown to be regulated by changes in intracellular free Zn^{2+} [36], which in turn are expected to be influenced by alterations in metallothionein expression. We therefore determined whether the regulation of *Slc30a8* expression by hypoxia might be diminished in islets from mice null for *Mt1* and *Mt2* [20]. Hypoxia still resulted in a marked decrease in *Slc30a8* expression in *Mt1*^{-/-}:*Mt2*^{-/-} mice, to a similar extent to that observed in wild-type (WT) mouse islets (Fig. 5a). Further supporting a metallothionein-independent effect of hypoxia on *Slc30a8* expression in CD1 mouse islets, *Slc30a8* mRNA levels tended to be decreased as early as 5 h after the initiation of hypoxia (significant decrease after 10 h) (Fig. 5b).

While *Slc30a8* expression was not affected by the loss of *Mt1* and *Mt2*, cell survival after exposure to hypoxia was markedly (~twofold) decreased in *Mt1*^{-/-}:*Mt2*^{-/-} islets compared with controls (Fig. 5c).

Hypoxia-induced metallothionein gene induction and cell death is modulated by ZnT8 To further explore the signalling pathway(s) involved in regulating metallothionein expression

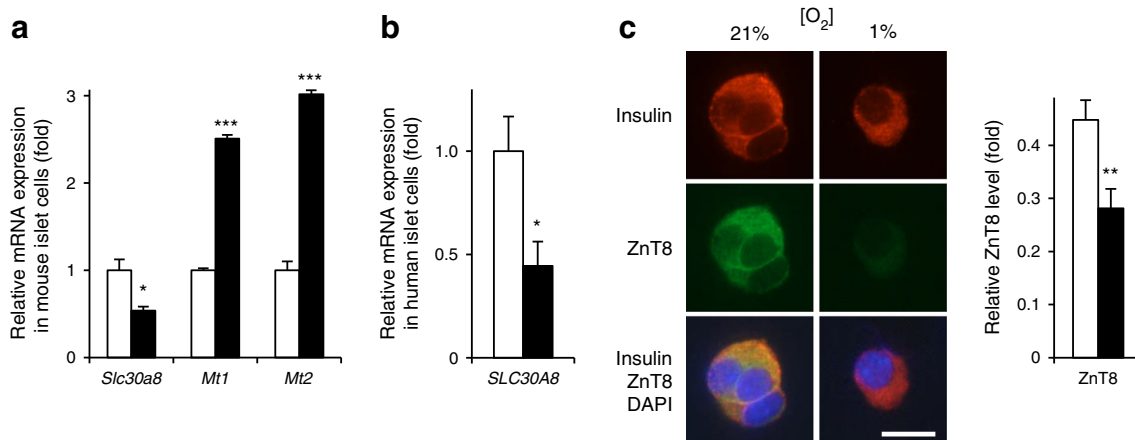


Fig. 3 The effect of hypoxia on the expression of the genes implicated in Zn^{2+} homeostasis in dissociated islets. **(a)** Dissociated CD1 mouse and **(b)** human islet cells were incubated for 24 h at normoxia (white bars) or hypoxia (black bars). qRT-PCR analysis of **(a)** *Slc30a8*, *Mt1*, *Mt2* and **(b)** *SLC30A8* was performed (normalisation to the expression in normoxia).

(c) Dispersed CD1 mouse islet cells were incubated for 24 h at normoxia (21%) or hypoxia (1%). Scale bar, 10 μ m. The level of ZnT8 was quantified by calculating the fluorescence ratio of ZnT8 vs insulin (white bar, 21%; black bar, 1%). Bars represent mean \pm SE. * $p < 0.05$, ** $p < 0.01$ and *** $p < 0.001$

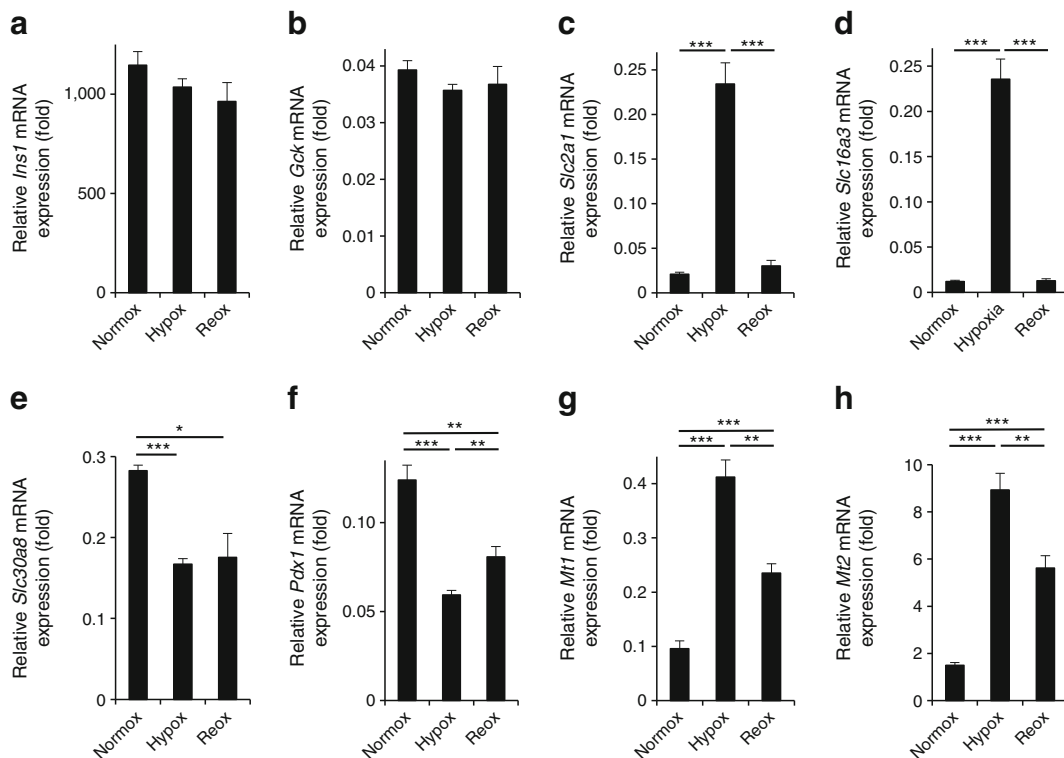


Fig. 4 The effect of hypoxia and re-oxygenation on the expression of genes implicated in beta cell differentiation and function as well as Zn^{2+} homeostasis. CD1 mouse islets were incubated at normoxia, at hypoxia for 24 h or hypoxia for 24 h followed by normoxia for 8 h. The qRT-PCR

analysis was performed for (a) *Ins1*, (b) *Gck*, (c) *Slc2a1*, (d) *Slc16a3*, (e) *Slc30a8*, (f) *Pdx1*, (g) *Mt1* and (h) *Mt2*. Hypox, hypoxia; normox, normoxia; and reox, re-oxygenated

and free cytosolic Zn^{2+} in response to hypoxia, we next asked whether inactivation of ZnT8 affected these responses. Induction of *Mt1* and *Mt2* by hypoxia was significantly impaired in *ZnT8^{-/-}* mouse islets, consistent with the lower $[Zn^{2+}]_{cyt}$ in the latter vs WT mouse islet cells (Fig. 6a, b). As expected, *Mt1*/*Mt2* expression was induced by exogenously added Zn^{2+} ions in hypoxia (Fig. 6c). Similar to the observations in hypoxia, $[Zn^{2+}]_{cyt}$ was lower in islet cells from mice lacking ZnT8 vs WT islets (Fig. 6d). This difference between WT and *ZnT8^{-/-}* islets was no longer observed in hypoxia (Fig. 6e). Conversely, overexpression of *Slc30a8* in the clonal INS1 (832/13) beta cell line increased $[Zn^{2+}]_{cyt}$ (Fig. 6f). $ZnCl_2$ was able to raise the expression of the most abundant metallothionein, *Mt2*, in hypoxic *ZnT8^{-/-}* mouse islets to levels similar to those of hypoxic WT islets (Fig. 6g). In addition to the regulation of metallothioneins, the expression of other genes important in the response of the beta cell to hypoxia was assessed (ESM Fig. 5). In contrast to metallothionein, there was a tendency for enhanced expression of these genes in *ZnT8^{-/-}* islets, reaching statistical significance for *Slc16a3* (MCT4) when compared in WT and *ZnT8^{-/-}* islets during hypoxia. Insulin content did not significantly differ between WT and *ZnT8^{-/-}* mouse islets in normoxia or hypoxia (ESM Fig. 6).

In contrast to *Mt1^{-/-}:Mt2^{-/-}* islets, cell survival was not affected in a large sample of *ZnT8^{-/-}* mouse islets (Fig. 6h)

exposed to hypoxia. Multiple linear regression revealed a significant effect of mouse age ($p=0.001$) and islet size ($p<0.001$), but not genotype, on islet cell survival. However, when assessed in a defined population of smaller islets ($<120 \mu\text{mol/l}$) from older mice (12–15 weeks), we observed a significant difference in islet cell survival with a survival advantage of *ZnT8^{-/-}* mouse islets after 24 h ($p<0.001$) or 48 h of hypoxia exposure ($p<0.01$) (Fig. 6i).

Discussion

We demonstrate here that hypoxia strongly, but reversibly, regulates the expression of *Slc30a8*/*ZnT8* in islets and beta cells from human and two rodent species. These findings thus extend the list of pathophysiological factors, currently including cytokines [31, 37] and fatty acids [36], which regulate the expression of this type 2 diabetes risk gene in islets. Hypoxia might therefore contribute to the downregulation of *Slc30a8* previously observed in human type 2 diabetes islets [38].

The present findings extend to the islet beta cell those of a recent report [39] showing that hypoxia lowers the expression of *Slc30a8*/*ZnT8* in the retinal pigment epithelium of the eye. The latter studies [39] provided evidence for control of *ZnT8* levels via HIF1 stabilisation. By contrast, in our hands, the

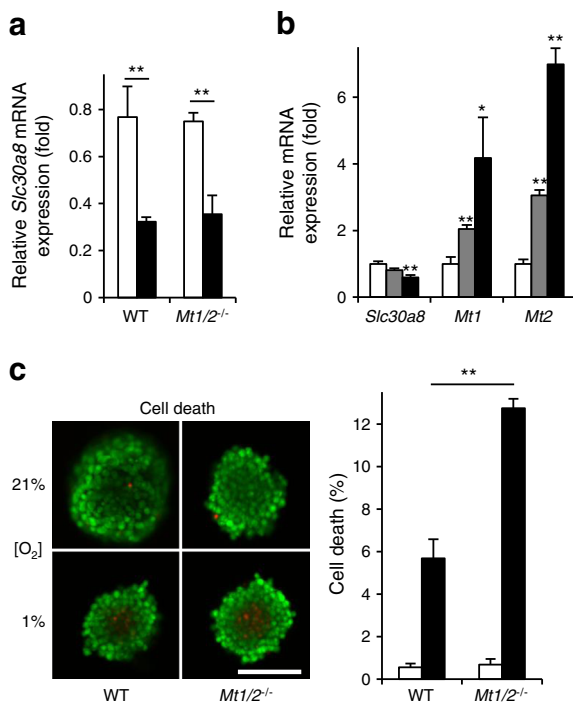


Fig. 5 The effect of hypoxia on the expression of *Slc30a8* and cell death in mouse pancreatic islets deficient for metallothioneins 1 and 2. Islets from WT 129S1/SvImJ and 129S7/SvEvBrd-*Mt1^{tm1Bn1}Mt2^{tm1Bn1}*/J mice were incubated for 24 h at normoxia (white bars) or hypoxia (black bars). **(a)** The qRT-PCR analysis of *Slc30a8* was performed. **(b)** CD1 mouse islets were incubated for 0 h (white bars), 5 h (grey bars) or 10 h (black bars) at hypoxia. qRT-PCR analysis of *Slc30a8*, *Mt1* and *Mt2* was performed (normalisation to the expression in normoxia). **(c)** The percentage of dead cells within intact islets after exposure for 24 h to normoxia (white bars, 21%) or hypoxia (black bars, 1% ambient oxygen). Scale bar, 100 μ m. Bars represent mean \pm SE. * $p < 0.05$ and ** $p < 0.01$. *Mt1/2^{-/-}*, 129S7/SvEvBrd-*Mt1^{tm1Bn1}Mt2^{tm1Bn1}*/J

HIF1 α -stabilising agent DMOG tended only slightly to reduce *ZnT8* mRNA levels. Instead, our results suggest that the effects of hypoxia on *Slc30a8*/*ZnT8* expression in pancreatic islets are more complex and may conceivably involve changes in the expression of *Pdx1*, recently shown to control *Slc30a8* expression in clonal beta cells [40].

Recently, Lefebvre and colleagues [36] reported that depletion of intracellular zinc reduced *Slc30a8* expression in human islets, confirming findings in INS-1E cells [41]. These earlier observations thus raise the possibility that the lowered cytosolic Zn^{2+} concentrations reported here during hypoxia may contribute to the lowering of *Slc30a8*/*ZnT8* expression. Arguing against this view, addition of extracellular Zn^{2+} (30 μ mol/l $ZnCl_2$) did not rescue the lowering of *Slc30a8* mRNA levels after hypoxia (ESM Fig. 7). Moreover, any direct or indirect (e.g. by alterations in cytosolic Zn^{2+}) effect of hypoxia-driven metallothionein gene induction also seems unlikely, as hypoxia-induced changes in *Slc30a8* mRNA levels were not different in *Mt1/Mt2^{-/-}* mice compared with control animals (Fig. 5a).

We propose instead a model by which hypoxia initially depresses *Slc30a8* transcription and/or mRNA stability by mechanisms which remain to be elucidated (as discussed below). This then leads to a lowering of cytosolic free Zn^{2+} , and a consequent drop in *Mt1/Mt2* expression. The above sequence of events is supported by the observation of reduced cytosolic Zn^{2+} in *ZnT8^{-/-}* mice compared with controls (Fig. 6d), and by an increased cytosolic Zn^{2+} concentration in clonal pancreatic beta cells when *Slc30a8* was overexpressed (Fig. 6f).

The observation that cytosolic free Zn^{2+} is lowered by ablating *Slc30a8*, a mediator of Zn^{2+} uptake into granules, may at first glance appear surprising. We would stress that the use here of a molecularly targeted cytosolic Zn^{2+} probe excludes uncertainties over the subcellular compartment in which Zn^{2+} concentrations are interrogated. So how might this apparent paradox be explained? First, our data suggest that *ZnT8* may, under normal circumstances, catalyse Zn^{2+} efflux from granules, in line with bidirectional transport by *ZnT5* [42]. Alternatively, gradual release of Zn^{2+} from granules by exocytosis may elevate the extracellular Zn^{2+} concentration in the medium surrounding WT, but not *ZnT8^{-/-}*, cells for which granule Zn^{2+} content is near zero (see Chimienti et al and Li et al [13, 43]). The released Zn^{2+} may then be recaptured, at least in part, and taken into the cytosol, by plasma-membrane-located Zn^{2+} -uptake systems (e.g. ZIP1, voltage-gated Ca^{2+} channels) [30]. However, we calculate that release of Zn^{2+} ions into the medium is likely to increase total external Zn^{2+} concentration to only a miniscule extent (<50 nmol/l) vs a total extracellular concentration of >6 μ mol/l [44], although local concentrations at the cell surface [14, 43] may be higher.

One of the effects of *ZnT8* inhibition and consequently lowered cytosolic Zn^{2+} levels was impaired metallothionein induction in response to hypoxia (Fig. 6a, b). However, this did not affect islet cell survival under the conditions examined, despite the fact that islets lacking metallothionein-1 and -2 exhibited a twofold higher frequency of beta cell death compared with control islets (Fig. 5c). The latter finding is consistent with earlier data showing that overexpression of metallothionein protects islets against hypoxia, leading to improved islet cell survival [45]. We assume, therefore, that residual levels of metallothionein (~50%) in *ZnT8^{-/-}* mouse islets are sufficient to prevent an increase in cell death.

Unexpectedly, in small islets from older mice, we observed a significantly lower rate of cell death in *ZnT8^{-/-}* compared with WT islets. This finding is in line with our previous report on glucose homeostasis in these mice, where a compromising effect of *ZnT8* deficiency disappeared with age [15], and suggests that, with ageing, a deleterious effect of *ZnT8* deficiency may revert to one of protection. On the other hand, the lack of a genotype effect in large islets may be due to the variance of oxygen concentration in these islets, where the

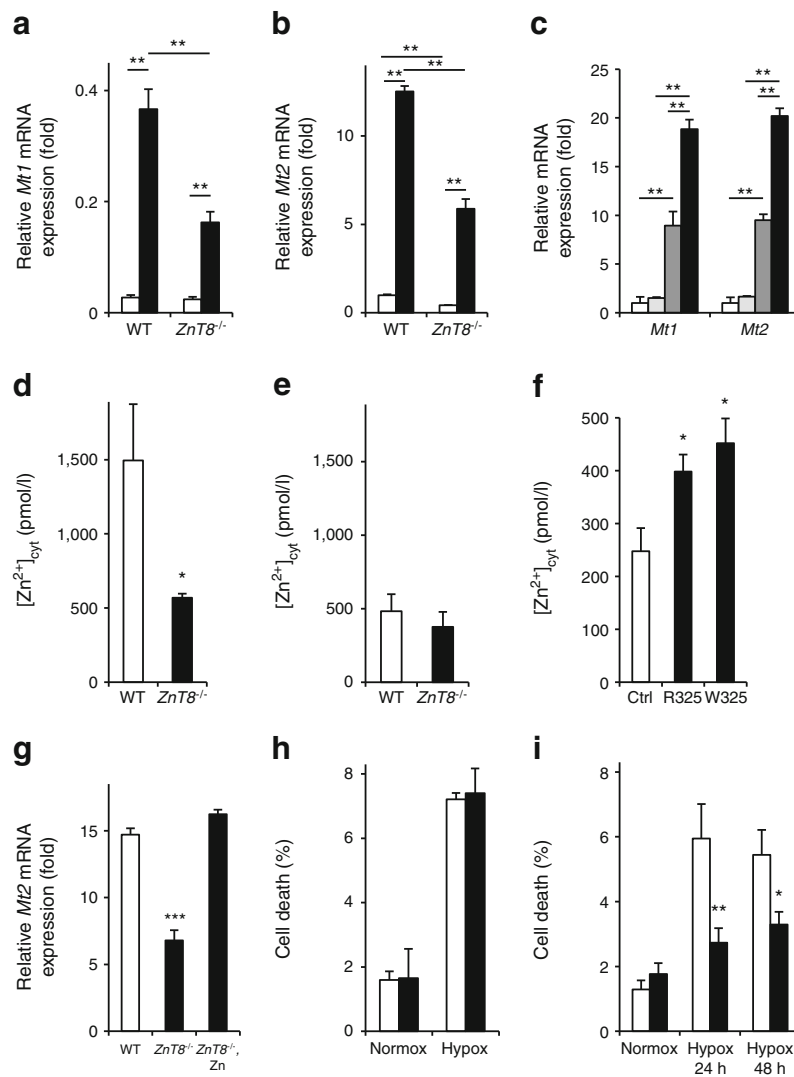


Fig. 6 The effect of deficiency for the zinc transporter ZnT8 on the expression of *Mt1* and *Mt2* and $[Zn^{2+}]_{cyt}$ as well as cell death rate in mouse pancreatic islets. Islets from *ZnT8*^{+/+} (WT) and *ZnT8*^{-/-} mice were incubated for 24 h at normoxia (white bars) or hypoxia (black bars). qRT-PCR analysis of (a) *Mt1* and (b) *Mt2* was performed. (c) CD1 mouse islets were incubated for 24 h at normoxia or hypoxia, with or without 30 μ mol/l extracellular ZnCl₂ (white bars, normoxia without ZnCl₂; grey bars, normoxia with ZnCl₂; dark grey bars, hypoxia without ZnCl₂; black bars, hypoxia with ZnCl₂); qRT-PCR analysis of *Mt1* and *Mt2* was performed. (d, e) $[Zn^{2+}]_{cyt}$ was measured in dissociated islets of *ZnT8*^{+/+} (WT) and *ZnT8*^{-/-} (knockout) mice after incubation for 24 h at (d) normoxia or (e) hypoxia. (f) Analysis of free $[Zn^{2+}]_{cyt}$ in INS-1(832/13)

cells expressing plasmid constructs encoding *ZnT8* carrying either the at-risk R325 or the protective W325 polymorphism, compared with control (Ctrl). (g) Islets from *ZnT8*^{+/+} (WT, white bars) and *ZnT8*^{-/-} mice (black bars) were incubated for 24 h at hypoxia, with or without 30 μ mol/l extracellular ZnCl₂ (Zn). qRT-PCR of *Mt2* was performed. (h, i) The proportion of dead cells in islets of *ZnT8*^{+/+} (white bars) and *ZnT8*^{-/-} mice (black bars) is depicted (h) after incubation of islets of all sizes for 24 h at normoxia or hypoxia in mice aged 10–15 weeks, and (i) for islets <120 μ m in older mice (>12 weeks). Bars represent mean \pm SE. **p*<0.05, ***p*<0.01 and ****p*<0.001. Hypox, hypoxia; normox, normoxia; Zn, extracellular ZnCl₂

core is relatively anoxic as a consequence of larger diffusion distance when exposed to hypoxia in vitro. Nonetheless, the expression of hypoxia-inducible genes (with the exception of *Mt1/Mt2*) tended to be enhanced in *ZnT8*^{-/-} mice, possibly reflecting regulation of HIF1 α by Zn²⁺ [46]. Importantly, the current results may provide an explanation for the recent finding that rare loss-of-function mutations in the *SLC30A8* gene in man are associated with protection against type 2 diabetes [47].

Reduced expression of ZnT8 in hypoxia may thus reflect an ‘adaptive’ response of beta cells to permit survival under a hypoxic/oxidative stress in a less differentiated state (as previously described after partial pancreatectomy-induced hyperglycaemia [48]). The mechanisms behind this observation remain to be elucidated, but may suggest that reduced zinc levels are beneficial in the situation of increased hypoxic stress. Indeed, it has previously been shown that high concentrations of Zn²⁺ are able to induce islet cell death in a dose-

dependent manner [49, 50]. A similar rate of cell death after 24 h and 48 h of hypoxia, as observed here, suggests that, once adapted to hypoxia, islets are better able to survive. Further studies will be required, however, to determine whether pharmacological modification of ZnT8 function may be beneficial in islet transplantation or type 2 diabetes mellitus.

Acknowledgements We thank L. Zhao and E. Oliver Perez (Imperial College London, London, UK) for assistance with the hypoxia experiments. We would also like to thank P. Chabosseau (Imperial College London, London, UK) for assistance with measurements of cytosolic Zn²⁺ and R. Zullig (University of Zurich, Zurich, Switzerland) for assistance with islet preparation.

Preliminary reports of these findings have previously been published in abstract form [51] and reported at the 49th EASD Annual Meeting in Barcelona in 2013.

Funding This study was supported by: Wellcome Trust Senior Investigator (WT098424AIA) and Royal Society Wolfson Research Merit Awards to GAR; grants from the MRC (Programme MR/J0003042/1), European Association of the Study of Diabetes (EFSO) and Diabetes UK (studentships to GAR and AS); a Diabetes UK R. D. Lawrence Research Fellowship (12/0004431) to DJH; and a University of Zurich Academic Career Development Award, a Swiss Life Jubilee Foundation Grant and a Swiss National Science Foundation Grant (SNF IZK0Z3_150520) to PAG. The work leading to this publication has received support from the Innovative Medicines Initiative Joint Undertaking under grant agreement number 155005 (IMIDIA), resources of which comprise financial contribution from the European Union's Seventh Framework Programme (FP7/2007-2013) and EFPIA companies' in kind contribution (GAR). The isolation of human islets in Geneva was supported by a Juvenile Diabetes Research Foundation (JDRF) award (31-2008-416) to DB. The isolation of human islets was supported by the Oxford NIHR Biomedical Research Centre and a Juvenile Diabetes Research Foundation (JDRF) award (31-2008-617) to PRVJ).

Duality of interest The authors declare that there is no duality of interest associated with this manuscript.

Contribution statement PAG and GAR designed the studies. PAG, EAB, DJH, GM, AS, RKM and MH performed all the procedures and analyses. DB, SJH and PRVJ provided human islets and analysed human islet data. FC provided anti-ZnT8 antibodies and analysed the ZnT8 expression data. GAR and PAG wrote the manuscript. All authors contributed to the discussion and revised the manuscript and all approved the final version. GAR is responsible for the integrity of the work as a whole.

Open Access This article is distributed under the terms of the Creative Commons Attribution License which permits any use, distribution, and reproduction in any medium, provided the original author(s) and the source are credited.

References

- Pullen TJ, Rutter GA (2013) When less is more: the forbidden fruits of gene repression in the adult beta-cell. *Diabetes Obes Metab* 15: 503–512
- Sekine N, Cirulli V, Regazzi R et al (1994) Low lactate dehydrogenase and high mitochondrial glycerol phosphate dehydrogenase in pancreatic beta-cells. Potential role in nutrient sensing. *J Biol Chem* 269:4895–4902
- Lau J, Henriksnas J, Svensson J, Carlsson PO (2009) Oxygenation of islets and its role in transplantation. *Curr Opin Organ Transplant* 14: 688–693
- Olsson R, Olerud J, Pettersson U, Carlsson PO (2011) Increased numbers of low-oxygenated pancreatic islets after intraportal islet transplantation. *Diabetes* 60:2350–2353
- Olsson R, Carlsson PO (2011) A low-oxygenated subpopulation of pancreatic islets constitutes a functional reserve of endocrine cells. *Diabetes* 60:2068–2075
- Bensellam M, Duvillie B, Rybachuk G et al (2012) Glucose-induced O(2) consumption activates hypoxia inducible factors 1 and 2 in rat insulin-secreting pancreatic beta-cells. *PLoS One* 7:e29807
- Sato Y, Endo H, Okuyama H et al (2011) Cellular hypoxia of pancreatic beta-cells due to high levels of oxygen consumption for insulin secretion in vitro. *J Biol Chem* 286:12524–12532
- Gunther V, Lindert U, Schaffner W (2012) The taste of heavy metals: gene regulation by MTF-1. *Biochim Biophys Acta* 1823:1416–1425
- Bosco MD, Mohanasundaram DM, Drogemuller CJ, Lang CJ, Zalewski PD, Coates PT (2010) Zinc and zinc transporter regulation in pancreatic islets and the potential role of zinc in islet transplantation. *Rev Diabet Stud* 7:263–274
- Boesgaard TW, Zilinskaite J, Vanttinen M et al (2008) The common SLC30A8 Arg325Trp variant is associated with reduced first-phase insulin release in 846 non-diabetic offspring of type 2 diabetes patients—the EUGENE2 study. *Diabetologia* 51:816–820
- Kirchhoff K, Machicao F, Haupt A et al (2008) Polymorphisms in the TCF7L2, CDKAL1 and SLC30A8 genes are associated with impaired proinsulin conversion. *Diabetologia* 51:597–601
- Sladek R, Rocheleau G, Rung J et al (2007) A genome-wide association study identifies novel risk loci for type 2 diabetes. *Nature* 445: 881–885
- Chimienti F, Favier A, Seve M (2005) ZnT-8, a pancreatic beta-cell-specific zinc transporter. *Biomaterials* 18:313–317
- Lemaire K, Ravier MA, Schraenen A et al (2009) Insulin crystallization depends on zinc transporter ZnT8 expression, but is not required for normal glucose homeostasis in mice. *Proc Natl Acad Sci U S A* 106:14872–14877
- Nicolson TJ, Bellomo EA, Wijesekara N et al (2009) Insulin storage and glucose homeostasis in mice null for the granule zinc transporter ZnT8 and studies of the type 2 diabetes-associated variants. *Diabetes* 58:2070–2083
- Pound LD, Sarkar SA, Ustione A et al (2012) The physiological effects of deleting the mouse slc30a8 gene encoding zinc transporter-8 are influenced by gender and genetic background. *PLoS One* 7: e40972
- Rutter GA (2010) Think zinc: new roles for zinc in the control of insulin secretion. *Islets* 2:1–2
- Wijesekara N, Dai FF, Hardy AB et al (2010) Beta cell specific ZnT8 deletion in mice causes marked defects in insulin processing, crystallisation and secretion. *Diabetologia* 53:1656–1668
- Vinkenborg JL, Nicolson TJ, Bellomo EA, Koay MS, Rutter GA, Merx M (2009) Genetically encoded FRET sensors to monitor intracellular Zn²⁺ homeostasis. *Nat Methods* 6:737–740
- Masters BA, Kelly EJ, Quairé CJ, Brinster RL, Palmiter RD (1994) Targeted disruption of metallothionein I and II genes increases sensitivity to cadmium. *Proc Natl Acad Sci U S A* 91: 584–588
- Cross SE, Hughes SJ, Partridge CJ, Clark A, Gray DW, Johnson PR (2008) Collagenase penetrates human pancreatic islets following standard intraductal administration. *Transplantation* 86:907–911
- Bosco D, Armanet M, Morel P et al (2010) Unique arrangement of alpha- and beta-cells in human islets of Langerhans. *Diabetes* 59: 1202–1210
- Ravier MA, Rutter GA (2005) Glucose or insulin, but not zinc ions, inhibit glucagon secretion from mouse pancreatic alpha-cells. *Diabetes* 54:1789–1797

24. Bellomo EA, Meur G, Rutter GA (2011) Glucose regulates free cytosolic Zn²⁺ concentration, Slc39 (ZnT8) and metallothionein gene expression in primary pancreatic islet beta-cells. *J Biol Chem* 286: 25778–25789
25. Klee P, Allagnat F, Pontes H et al (2011) Connexins protect mouse pancreatic beta cells against apoptosis. *J Clin Invest* 121: 4870–4879
26. da Silva Xavier G, Loder MK, McDonald A et al (2009) TCF7L2 regulates late events in insulin secretion from pancreatic islet beta-cells. *Diabetes* 58:894–905
27. Sensi SL, Jeng JM (2004) Rethinking the excitotoxic ionic milieu: the emerging role of Zn(2+) in ischemic neuronal injury. *Curr Mol Med* 4:87–111
28. Meur G, Qian Q, da Silva Xavier G et al (2011) Nucleo-cytosolic shuttling of FOXO1 directly regulates mouse INS2 but not INS1 gene expression in pancreatic beta cells (min6). *J Biol Chem* 286: 13647–13656
29. Cabrera O, Berman DM, Kenyon NS, Ricordi C, Berggren PO, Caicedo A (2006) The unique cytoarchitecture of human pancreatic islets has implications for islet cell function. *Proc Natl Acad Sci U S A* 103:2334–2339
30. Liuzzi JP, Cousins RJ (2004) Mammalian zinc transporters. *Annu Rev Nutr* 24:151–172
31. El MM, Billings LK, Raja MR et al (2010) Acute cytokine-mediated downregulation of the zinc transporter ZnT8 alters pancreatic beta-cell function. *J Endocrinol* 206:159–169
32. Dionne KE, Colton CK, Yarmush ML (1993) Effect of hypoxia on insulin secretion by isolated rat and canine islets of Langerhans. *Diabetes* 42:12–21
33. O'Sullivan ES, Johnson AS, Omer A et al (2010) Rat islet cell aggregates are superior to islets for transplantation in microcapsules. *Diabetologia* 53:937–945
34. Heimberg H, de Vos A, Moens K et al (1996) The glucose sensor protein glucokinase is expressed in glucagon-producing alpha-cells. *Proc Natl Acad Sci U S A* 93:7036–7041
35. Melloul D, Marshak S, Cerasi E (2002) Regulation of insulin gene transcription. *Diabetologia* 45:309–326
36. Lefebvre B, Vandewalle B, Balavoine AS et al (2012) Regulation and functional effects of ZNT8 in human pancreatic islets. *J Endocrinol* 214:225–232
37. Egefjord L, Jensen JL, Bang-Berthelsen CH et al (2009) Zinc transporter gene expression is regulated by pro-inflammatory cytokines: a potential role for zinc transporters in beta-cell apoptosis? *BMC Endocr Disord* 9:7
38. Marselli L, Thorne J, Dahiya S et al (2010) Gene expression profiles of Beta-cell enriched tissue obtained by laser capture microdissection from subjects with type 2 diabetes. *PLoS One* 5:e11499
39. Deniro M, Al-Mohanna FA (2012) Zinc transporter 8 (ZnT8) expression is reduced by ischemic insults: a potential therapeutic target to prevent ischemic retinopathy. *PLoS One* 7:e50360
40. Pound LD, Hang Y, Sarkar SA et al (2011) The pancreatic islet beta-cell-enriched transcription factor Pdx-1 regulates Slc30a8 gene transcription through an intronic enhancer. *Biochem J* 433:95–105
41. Smidt K, Jessen N, Petersen AB et al (2009) SLC30A3 responds to glucose- and zinc variations in beta-cells and is critical for insulin production and in vivo glucose-metabolism during beta-cell stress. *PLoS One* 4:e5684
42. Valentine RA, Jackson KA, Christie GR, Mathers JC, Taylor PM, Ford D (2007) ZnT5 variant B is a bidirectional zinc transporter and mediates zinc uptake in human intestinal Caco-2 cells. *J Biol Chem* 282:14389–14393
43. Li D, Chen S, Bellomo EA et al (2011) Imaging dynamic insulin release using a fluorescent zinc probe, ZIMIR. *Proc Natl Acad Sci U S A* 108:21063–21068
44. Vallee BL, Gibson JG (1948) The zinc content of normal human whole blood, plasma, leucocytes, and erythrocytes. *J Biol Chem* 176: 445–457
45. Li X, Chen H, Epstein PN (2004) Metallothionein protects islets from hypoxia and extends islet graft survival by scavenging most kinds of reactive oxygen species. *J Biol Chem* 279:765–771
46. Nardinocchi L, Pantisano V, Puca R et al (2010) Zinc downregulates HIF-1alpha and inhibits its activity in tumor cells in vitro and in vivo. *PLoS One* 5:e15048
47. Flannick J, Thorleifsson G, Beer NL et al (2014) Loss-of-function mutations in SLC30A8 protect against type 2 diabetes. *Nat Genet* 46: 357–363
48. Jonas JC, Sharma A, Hasenkamp W et al (1999) Chronic hyperglycemia triggers loss of pancreatic beta cell differentiation in an animal model of diabetes. *J Biol Chem* 274:14112–14121
49. Chang I, Cho N, Koh JY, Lee MS (2003) Pyruvate inhibits zinc-mediated pancreatic islet cell death and diabetes. *Diabetologia* 46: 1220–1227
50. Kim BJ, Kim YH, Kim S et al (2000) Zinc as a paracrine effector in pancreatic islet cell death. *Diabetes* 49:367–372
51. Gerber PA, Bellomo EA, Meur G et al (2013) Hypoxia alters the expression of the type 2 diabetes-associated Zn²⁺ transporter Slc30a8/ZnT8 and cytosolic Zn²⁺ levels in human and rodent islets. *Diabetologia* 56(Suppl 1):S16