

# UNIVERSITY OF BIRMINGHAM

Research at Birmingham

## The immunogenetics of primary biliary cirrhosis

Webb, Gwilym; Siminovitch, K A; Hirschfield, Gideon

DOI:

[10.1016/j.jaut.2015.07.004](https://doi.org/10.1016/j.jaut.2015.07.004)

License:

Creative Commons: Attribution (CC BY)

*Document Version*

Publisher's PDF, also known as Version of record

*Citation for published version (Harvard):*

Webb, G, Siminovitch, KA & Hirschfield, GM 2015, 'The immunogenetics of primary biliary cirrhosis: A comprehensive review', *Journal of Autoimmunity*, vol. 64, pp. 42–52. <https://doi.org/10.1016/j.jaut.2015.07.004>

[Link to publication on Research at Birmingham portal](#)

### General rights

Unless a licence is specified above, all rights (including copyright and moral rights) in this document are retained by the authors and/or the copyright holders. The express permission of the copyright holder must be obtained for any use of this material other than for purposes permitted by law.

- Users may freely distribute the URL that is used to identify this publication.
- Users may download and/or print one copy of the publication from the University of Birmingham research portal for the purpose of private study or non-commercial research.
- User may use extracts from the document in line with the concept of 'fair dealing' under the Copyright, Designs and Patents Act 1988 (?)
- Users may not further distribute the material nor use it for the purposes of commercial gain.

Where a licence is displayed above, please note the terms and conditions of the licence govern your use of this document.

When citing, please reference the published version.

### Take down policy

While the University of Birmingham exercises care and attention in making items available there are rare occasions when an item has been uploaded in error or has been deemed to be commercially or otherwise sensitive.

If you believe that this is the case for this document, please contact [UBIRA@lists.bham.ac.uk](mailto:UBIRA@lists.bham.ac.uk) providing details and we will remove access to the work immediately and investigate.



Contents lists available at ScienceDirect

Journal of Autoimmunity

journal homepage: [www.elsevier.com/locate/jautimm](http://www.elsevier.com/locate/jautimm)

## Review article

## The immunogenetics of primary biliary cirrhosis: A comprehensive review

G.J. Webb <sup>a,\*</sup>, K.A. Siminovitch <sup>b</sup>, G.M. Hirschfield <sup>a</sup><sup>a</sup> NIHR Birmingham Liver Biomedical Research Unit, University of Birmingham, Birmingham, UK<sup>b</sup> Mount Sinai Hospital, Lunenfeld-Tanenbaum Research Institute, Toronto General Research Institute, and Departments of Immunology and Molecular Genetics, University of Toronto, Toronto, Ontario, Canada

## ARTICLE INFO

## Article history:

Received 3 July 2015

Accepted 6 July 2015

Available online xxx

## Keywords:

Genome-wide association study

Immunochip

HLA

CD4+ T cell

Animal models

Regulatory T cell

## ABSTRACT

Primary biliary cirrhosis (PBC), a classic autoimmune liver disease, is characterised by a progressive T cell predominant lymphocytic cholangitis, and a serologic pattern of reactivity in the form of specific anti-mitochondrial antibodies (AMA). CD4+ T cells are particularly implicated by PBC's cytokine signature, the presence of CD4+ T cells specific to mitochondrial auto-antigens, the expression of MHC II on injured biliary epithelial cells, and PBC's coincidence with other similar T cell mediated autoimmune conditions. CD4+ T cells are also central to current animal models of PBC, and their transfer typically also transfers disease. The importance of genetic risk to developing PBC is evidenced by a much higher concordance rate in monozygotic than dizygotic twins, increased AMA rates in asymptomatic relatives, and disproportionate rates of disease in siblings of PBC patients, PBC family members and certain genetically defined populations. Recently, high-throughput genetic studies have greatly expanded our understanding of the gene variants underpinning risk for PBC development, so linking genetics and immunology. Here we summarize genetic association data that has emerged from large scale genome-wide association studies and discuss the evidence for the potential functional significance of the individual genes and pathways identified; we particularly highlight associations in the IL-12-STAT4-Th1 pathway. HLA associations and epigenetic effects are specifically considered and individual variants are linked to clinical phenotypes where data exist. We also consider why there is a gap between calculated genetic risk and clinical data: so-called missing heritability, and how immunogenetic observations are being translated to novel therapies. Ultimately whilst genetic risk factors will only account for a proportion of disease risk, ongoing efforts to refine associations and understand biologic links to disease pathways are hoped to drive more rational therapy for patients.

© 2015 Published by Elsevier Ltd.

## 1. Introduction

Primary biliary cirrhosis (PBC) is an idiopathic autoimmune chronic liver disease characterised by the progressive loss of small intrahepatic bile ducts with resultant cholestasis and progressive fibrosis [1]. One in 1000 women over the age of 40 liver have PBC [2], and there remains only one licensed therapy – ursodeoxycholic acid. Failure to respond to this treatment puts patients at risk of progressive ductopenia and fibrosis, which ultimately requires liver transplantation to avoid death from liver failure. Current disease models envisage an immune-driven biliary injury, resulting in

secondary cholestasis, and which arises on the background of combined genetic and environmental risks. Further mechanistic insights should illuminate better therapeutic options for patients. Herein we consider the immunogenetic basis for PBC and the potential for this new knowledge to translate into improved disease management.

## 1.1. PBC is a typical autoimmune disease with a T-cell signature

The phenotype of PBC is typical for autoimmune disease, characterized by strong female predisposition, with a high proportion (~53%) of patients having at least one coincident autoimmune condition [3,4] (Table 1), and most affected individuals manifesting detectable autoantibodies against the E2 component of the pyruvate dehydrogenase enzyme found on the inner mitochondrial

\* Corresponding author. Centre for Liver Research, Institute of Biomedical Research, Wolfson Drive, University of Birmingham, Birmingham, B15 2TT, UK.

E-mail address: [g.hirschfield@bham.ac.uk](mailto:g.hirschfield@bham.ac.uk) (G.M. Hirschfield).

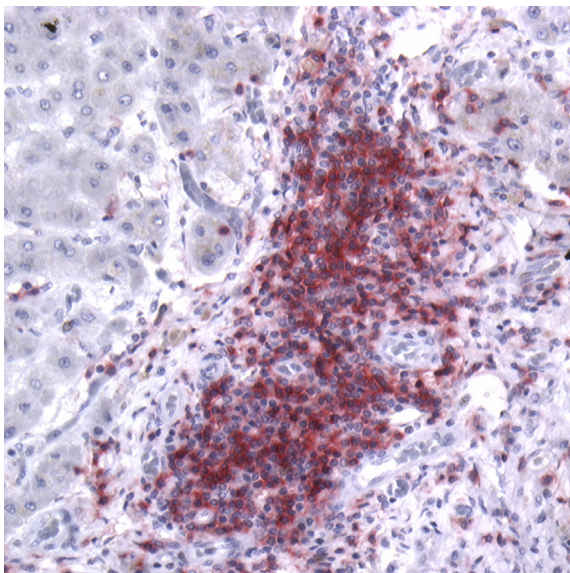
**Table 1**  
Coincidence of other autoimmune disease with PBC.

Probable or definite co-incident condition	Number (%); n = 160
Sjögren syndrome	40 (25)
Autoimmune thyroid disease	37 (23)
Rheumatoid arthritis	27 (17)
Scleroderma	12 (8)
Raynaud's phenomenon	38 (24)
Systemic lupus erythematosus	2 (1)
Autoimmune thrombocytopenic purpura	2 (1)
Pernicious anemia	6 (4)
All conditions	84 (53)

Adapted from Watt et al. [3].

membrane [5]. These 'anti-mitochondrial antibodies' (AMA) are both sensitive and specific for diagnosis and prediction of the disease and are usually present at high titer [6]. Other autoantibodies are also frequent among PBC patients, including antibodies with highly specific anti-nuclear antibody reactivity [1].

Pathologically, PBC is characterised by a progressive lymphocytic cholangitis centered on smaller intrahepatic bile ducts, often associated with the presence of granulomata in the liver. Autoantibodies against the components of mitochondria are densely localized to the apical surface of biliary epithelial cells (BEC) [7] and are associated with apoptosis [8]. A similar staining pattern may be seen on salivary epithelium in PBC patients with coincident sicca syndrome [9]. As is consistent with involvement of the adaptive immune system, the immune infiltrate is predominantly comprised of CD4+ T cells, with lesser increases in cytotoxic (CD8+) T cells [10] (Fig. 1). Numbers of CD4+ T cells are also increased in the hilar lymph nodes and the liver. Importantly, CD4+ [11] and CD8+ [12] T cells specific to mitochondrial auto-antigens have been demonstrated in the peripheral blood, livers and liver-draining lymph nodes of affected patients, while not detected in either healthy controls or patients with other liver diseases. Both MHC class I and II proteins are also expressed on BECs of PBC patients and thought to present antigen to cytotoxic CD8+ and helper CD4+ T cells, respectively [13–15].



**Fig. 1.** CD4+ T cells dominate the inflammatory infiltrate of PBC. Explanted PBC liver specimen stained with rabbit anti-CD4 (clone ab133616, Abcam, UK) and revealed with alkaline phosphatase red kit (Vector laboratories, UK); hematoxylin counterstain;  $\times 20$  magnification.

The cytokine signature associated with PBC is also indicative of immune system activation with a Th1/Th17 bias. Analysis of RNA expression in explanted PBC liver samples has consistently revealed skewing of the cytokine profile with reduced IL-10 (a predominantly Th2 cytokine) and increased interferon gamma (IFN $\gamma$ ; a Th1 cytokine) in comparison to chronic hepatitis C explants [16,17]. Levels of serum IL-18 – which acts to release IL-12 and activate the Th1 pathway – and IFN $\gamma$  are also elevated in PBC patients relative to levels detected in healthy controls and chronic viral hepatitis patients [18,19]. Immunohistochemical studies support these observations, with PBC liver samples showing strong staining for IFN $\gamma$  and IL12RB2 with a shift to increased IL-23 and Th-17 staining in later disease [20]. Ratios of circulating Th17:regulatory T cells (Treg) [21] as well as levels of serum IgM and numbers of IgM-producing plasma cells in the liver are also frequently increased in PBC patients [22].

### 1.2. Immunogenetic observations from animal models of autoimmune cholangitis

There is no animal model that completely reproduces the human PBC phenotype, a situation that may relate to limitations in deriving animal models and/or the highly complex combination of environmental and genetic factors and pathogenic pathways associated with biliary injury. Among the mouse strains now used as models for PBC are a number of strains with deficiencies in Treg. One example is the Scurfy mouse, in which a mutation in the master transcription factor of Treg, FOXP3, results in the complete absence of Treg. These mice manifest peri-biliary lymphocytic infiltrate, liver damage and AMA production on a background of multi-system autoimmunity [23]. Similar disease phenotypes arise in mice expressing a dominant negative TGF $\beta$ II under the control of the CD4 promoter [24] and in IL2R $\alpha^{-/-}$  mice, both of which have significant deficits in Treg function [25]. In one other murine model of PBC, a mutation that impairs function of the biliary epithelial cell and lymphocyte anion exchanger AE2 is associated with reductions in the numbers of Treg and variable periportal infiltrates with AMA [26].

Other murine models of PBC also highlight the importance of T cells in disease pathogenesis. Interruption of selected chromosomal regions on chromosomes 3 and 4 of the non-obese diabetic mouse, for example, yields mice that develop intra- and extrahepatic inflammation and dilation along with variable AMA for which biliary disease can be transferred by the mutant T cells or prevented by T cell depletion [27]. Similarly, CD4+ T cells from mice in which AMA production is triggered by immunization with the bacterium *Novosphingobium aromaticivorans*, can also transfer the disease phenotype to other mice [28].

A further insight from animal models is the complexity of the processes which lead to emergence of autoimmune disease. In one mouse model, for example, in which the xenobiotic 2-octynoic acid is used to induce production of anti-mitochondrial antibodies, development of the phenotype requires both the highly immunogenic complete Freund's adjuvant and an autoimmune-prone NOD.1101 background [29].

Manipulation of immunologic pathways has also been of help in refining the relative importance of different signaling cascades to PBC-like phenotypes. For example, deletion of IL-12p40 from IL2R $\alpha$ -deficient mice worsens cholangitis and fibrosis without evidence of shift to Th2 polarized responses that are thought to be associated with fibrosis [30]. Similarly, dominant negative TGF $\beta$  mice develop increased fibrosis with deletion of 12p35 [31], but, conversely, cholangitis in these mice is reduced by co-deficiency of IL-12p40 [32].

### 1.3. Clinical support for a strong genetic component to PBC

A significant etiologic role for genetic factors in PBC is supported by epidemiological evidence. PBC has the highest concordance in monozygotic twins of any autoimmune disease: 63% in one small series as compared to a risk in dizygotic twins close to the population level of <0.5% with no concordance between the 8 pairs studied [33]. Zygosity was carefully confirmed in each pair. Intriguingly, ages of presentation and presenting symptoms were similar among concordant twins and two of the discordant twins had other major autoimmune conditions.

The increased risk of other autoimmune conditions in PBC patients and their family members also points towards a genetic basis for disease that overlaps with the genetic factors underpinning other autoimmune diseases (Table 1). Risk for expressing AMA and for developing disease is also increased in first-degree relatives [34,35], and a disproportionate number of PBC patients have relatives with the disease at the point of diagnosis [2,36]. Sibling relative risk of the disease was calculated at 10.5 [37] in a UK series and 10.7 in the USA [38]. Numbers of individuals affected by PBC are also abnormally high in selected ethnically defined sub-populations [39,40] and in selected families within well-characterised comprehensive healthcare systems [35,41].

## 2. Immunogenetic observations in PBC

High throughput genetic studies have transformed our understanding of the genes conferring risk for autoimmune diseases including PBC. Such studies involve the comparison of large cohorts of individuals with and without the disease trait. Each group is genotyped for a very large number of individual single nucleotide variants (SNV) which are selected from those sufficiently prevalent in the general population to power subsequent statistical association analyses. In the case of genome wide association studies (GWAS), these traits are chosen from sequencing efforts to dissect the genome, while in more focused studies, such as the Immunochip analyses [42], a targeted selection of SNVs is used for the study. In the case of the Immunochip, for example, SNVs implicated in immune pathways and other autoimmune diseases as well as rarer SNVs are used to allow finer-resolution analysis of loci of interest.

The analyses of large scale GWAS-derived datasets enables identification of individual variants disproportionately associated with a disease or disease trait and, by extension, risk loci and candidate genes within or near such loci [43]. The power and lack of bias given the hypothesis-free nature of such studies has revolutionized the approach to disease gene discovery and enabled a move away from candidate gene studies and primary focus on either gene array technology or whole exome genome sequencing strategies.

A key confounder in GWAS is the potential for false positives because of the multiple comparisons inherent to the analysis. Thus, careful adjustments for such comparisons is mandatory as well as the replication of associations in separate validation cohorts. Further, GWAS-identified risk variants are, by definition, more frequent in the population than is the disease *per se* [44]. With these caveats in mind, PBC research has benefited from several high quality GWAS [45–48], meta-analyses of these datasets [49,50], and two more focused Immunochip studies [51,52]. The majority of these studies have focused on populations of Caucasian origin with two associations (*POU2AF1* and *TNFSF15*) unique to the Japanese population. In Caucasians many variants associated with PBC at or below genome-wide significance levels ( $p < 5 \times 10^{-8}$ ) have been identified and these are summarized in Fig. 1 and Table 2. This number will increase with larger, and higher resolution, studies.

Notably, there is a high degree of overlap between the known PBC risk variants and those associated with other autoimmune conditions.

## 3. The HLA gene variants associated with PBC

The HLA region, on the short arm of chromosome 6 contains many genes related to the adaptive immune response. Key amongst these are the HLA-A, HLA-B and HLA-C genes, which are associated with the production of MHC class I and the HLA-D genes, which are associated with MHC class II. Class I proteins are primarily involved with the presentation of shorter processed fragments of intracellular antigen to cytotoxic CD8+ T cells, while MHC class II proteins present extracellular antigen to CD4+ T helper cells. Variations in the large and highly polymorphic HLA locus on chromosome 6 have been long associated with PBC [53]. Initial studies linked the DRB\*08:01 allele group with disease risk, but the populations explored in these studies were relatively small [e.g. Ref. [54]].

More recently, analysis of a much larger sample of PBC in the Italian population confirmed an association of risk for PBC with the HLA-DR alleles B1\*08 and B1\*02 and an apparently protective effect of B1\*11 and B1\*13 [55]. These observations have been clarified by subsequent GWAS and Immunochip work, and a set of robust HLA associations now exists (Table 3), albeit primarily related to European Caucasian populations concerned and also the choice of variants examined on the Immunochip [42].

In terms of understanding PBC pathogenesis, it is possible that specific HLA variants either confer an overall predisposition to autoimmune disease or result in altered immune responses to specific environmental antigens. Although these possibilities require further investigation, recent exciting work has shown that T cells with the risk-conferring HLA DRB1\*08:01 genotype shown high-affinity responses to specific pyruvate dehydrogenase E2 subunit peptides, response that did not develop in the presence of the protective DRB1\*11:01 allele [56].

## 4. Non-HLA gene associations

### 4.1. T cell activation and the IL-12 pathway

Among the HLA genes associated with risk for PBC are a number of genes associated with CD4+ T cell activation, especially with IL-12-JAK-STAT4 signaling, a pathway promoting Th1 T cell polarisation (Summarized as Fig. 3). IL-12 is a heterodimeric molecule made up of the two subunits, p35 and p40, encoded by the *IL12A* and *IL12B* genes respectively. The latter protein also heterodimerizes with IL-23p19 to form IL-23, a key signaling component in the Th-17 pathway. The IL-12 receptor is also encoded by two genes, *IL12RB1*, which is constitutively expressed, and *IL12RB2* which is upregulated by interferon- $\gamma$  (IFN $\gamma$ ) to act as a positive feedback loop in antigenic stimulation. The tyrosine kinase 2 (TYK2) protein is key to both IL-12 and IL-23 receptor signaling. Variants in these genes are also associated with other autoimmune diseases and in systemic lupus erythematosus appear to influence IFN $\gamma$  production [57]. STAT4 deficient mice show impaired Th1 polarization and a defect in effector cytokine production that can block the development of autoimmune diabetes [58,59]. Another gene of interest is *TNFAIP3*, which encodes a zinc finger protein with the ability to modify ubiquitination states and inhibit the NF $\kappa$ B and STAT pathways as well as the functioning of some TNF receptors [60]. Deficiency confers excess TNF sensitivity in mice and early cachexia and death. The *SOC1* protein also implicated by genetics in PBC, has a regulatory effect on both NF $\kappa$ B and JAK-STAT pathways including STAT4 [61].



**Table 2**  
Risk loci associated with PBC identified by high-throughput genetic studies.

Locus	GWAS of PBC				Canadian/Italian/US iCHIP [51]			UK iCHIP [52]			Candidate gene(s)
	Study	SNV/RA	OR	p-value	Peak SNV/RA	OR	p-value	SNV/RA	OR	p-value	
1p36	[50]	rs3748816/C	1.33	3.15E-08	rs10910108/G	1.15	1.81E-03	rs10797431/A	1.15	1.44E-05	MMEL1
1p31	[45]	rs3790567/A	1.51	2.76E-11	rs72678531/C	1.68	2.66E-23	rs72678531/G	1.61	2.47E-38	IL12RB2
1q31	[47]	rs12134279/T	1.34	2.06E-14	rs1539414/A	1.26	3.46E-06	rs2488393/A	1.28	4.29E-12	DENND1B
2q12	[49]	rs12712133/A	1.14	5.19E-9							IL1R1, IL1RL2
2q32	[47]	rs10931468/A	1.5	2.35E-19	rs3024921/A	1.75	4.45E-11	rs3024921/A	1.62	2.59E-18	STAT4, STAT1
2q36	[49]	rs4973341/C	0.82	2.34E-10							CCL20
3p24	[47]	rs1372072/A	1.2	2.28E-08	rs1025818/G	1.2	3.53E-05	rs1025818/G	1.13	1.89E-04	PLCL2
3q13	[47]	rs2293370/G	1.35	2.53E-11	rs1131265/G	1.42	4.49E-09	rs2293370/G	1.39	6.84E-16	CD80
3q25	[45]	rs6441286/G	1.54	2.42E-14	rs9877910/T	1.47	1.02E-17	rs2366643/A	1.35	3.92E-22	IL12A
4p16	[49]	rs11724804/A	1.22	9.01E-12							DGKQ
4q24	[47]	rs7665090/G	1.26	4.06E-12	rs7665090/G	1.18	1.00E-04	rs7665090/C	1.26	8.48E-14	NFKB1
5p13	[47]	rs860413/A	1.3	1.02E-11	rs700172/A	1.27	1.63E-06	rs6871748/A	1.3	2.26E-13	IL7R
5q21	[49]	rs526231	0.87	1.14E-08							C5orf30
5q33	[49]	rs2546890	0.87	1.06E-10							IL12B
6p21	[45]	rs2856683/C	1.75	1.78E-19	rs7775055/C	3.71	1.11E-33	rs7774434/C	1.57	1.30E-48	HLA region
6q23.3	[49]	rs6933404	1.18	1.27E-10							TNFAIP3, OLIG3
7p14	[47]	rs6974491/A	1.25	4.44E-08	rs17259795/T	1.24	1.19E-05	rs73112661/G	1.22	1.69E-07	ELMO1
7q32	[50]	rs10488631/C	1.57	8.66E-13	rs10488631/C	1.56	2.52E-12	rs35188261/A	1.52	6.52E-22	IRF5
9p32	[48]	rs4979462/T	1.57	1.85E-14							
11q13	[47]	rs538147/G	1.23	2.06E-10	rs694739/A	1.18	2.85E-04	rs694739/A	1.18	1.96E-07	RPS6KA4
11q23	[47]	rs6421571/C	1.37	2.69E-12	rs7117261/C	1.46	3.18E-10	rs80065107/A	1.39	7.20E-16	CXCR5, DDX6
11q23	[48]	rs4938534/A	1.38	3.27E-08							POU2AF1
12p13	[47]	rs1800693/G	1.22	1.80E-09	rs1860545/T	1.2	5.27E-05	rs1800693/G	1.27	1.18E-14	TNFRSF1A,LTBR
12q24					rs11065979/A	1.2	2.87E-09				SH2B3
13q14					rs3862738/G	1.33	2.18E-08				TNFSF11
14q24	[47]	rs911263/T	1.29	1.76E-11	rs911263/A	1.25	3.43E-06	rs911263/T	1.26	9.95E-11	RAD51B
14q32	[47]	rs8017161/A	1.22	2.61E-13							TNFAIP2
16p13	[47]	rs12924729/G	1.29	2.95E-12	rs413024/T	1.31	2.29E-08	rs12708715/G	1.29	2.19E-13	SOCS1, CLEC16A
16q24	[47]	rs11117432/G	1.31	4.66E-11	rs35703946/G	1.27	6.10E-04	rs11117433/G	1.26	1.41E-09	IRF8
17q12	[50]	rs11557467/G	0.72	3.50E-13	rs907091/C	1.29	3.43E-09	rs17564829/G	1.26	6.05E-14	ORMDL3, IKZF3
17q21								rs17564829/G	1.25	2.15E-09	MAPT
19p12								rs34536443/G	1.91	1.23E-12	TYK2
19q13	[111]	rs3745516/A	1.46	7.97E-11							SPIB
22q13	[47]	rs968451/T	1.27	1.08E-09	rs715505/C	1.41	9.58E-12	rs2267407/A	1.29	1.29E-13	SYNGR1

Risk loci for PBC that have achieved genome-wide level of significance ( $p < 5 \times 10^{-8}$ ) in at least one study. GWAS, genome-wide association study; iCHIP, Illumina immunoarray association study; OR, odds ratio; RA, risk allele; SNV, single nucleotide variant.

Adapted from Mells and Hirschfeld [112].

#### 4.2. CD80

CD80 (also known as B7.1) is an inducible co-stimulatory molecule on antigen-presenting cells. CD80 and the constitutively expressed CD86, together B7, provide a signal to the T cell CD28 receptor which amplifies T-cell antigen receptor signaling. By contrast, another T cell receptor, CTLA4, acts as a higher affinity

competitor to CD28 to reduce T cell immune responses. Deficiency of CD80 results in a reduced plasma cell mediated humoral response to immunization [62].

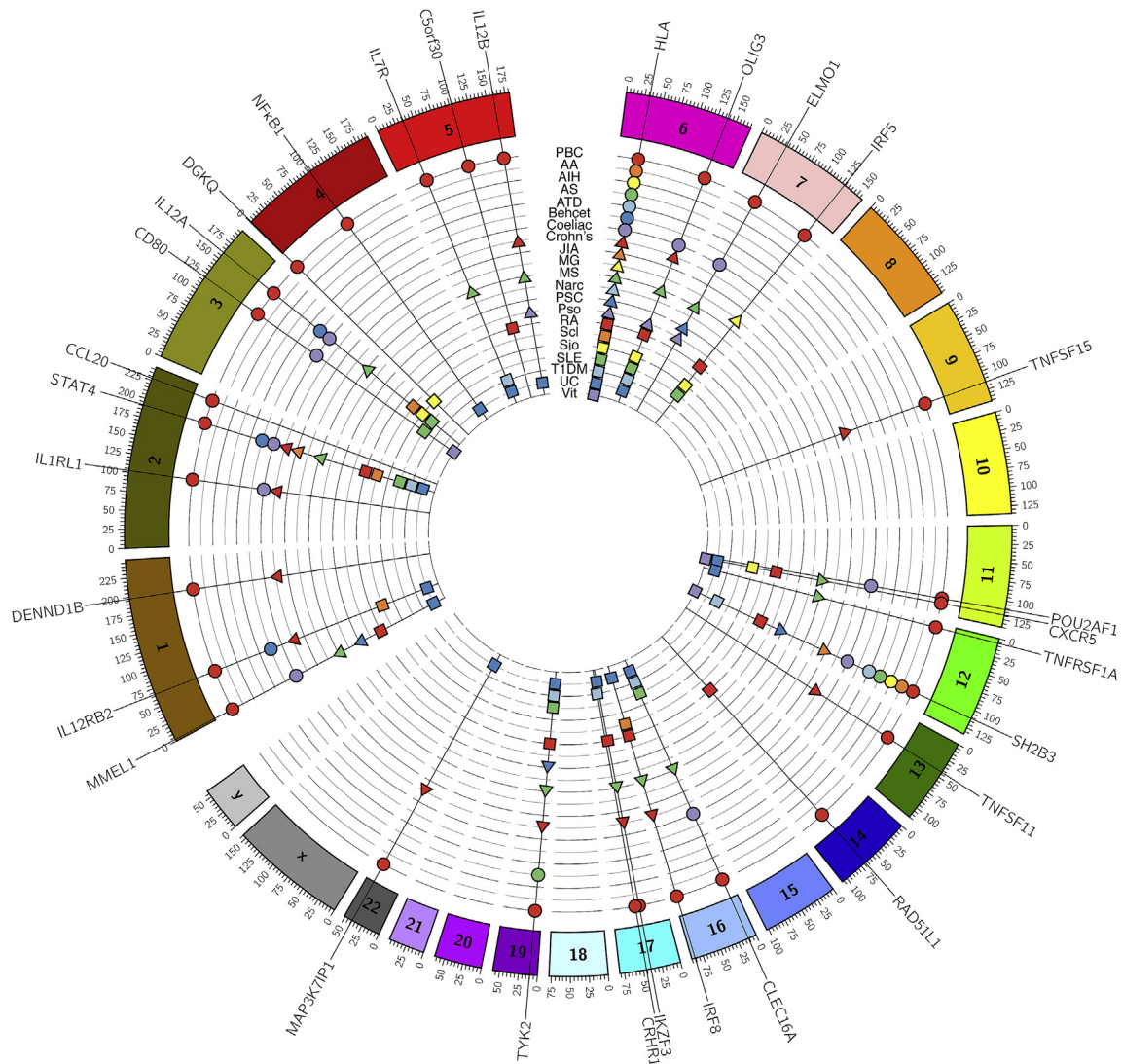
#### 4.3. IL7R $\alpha$ /CD127

IL-7 is necessary for both T and B lymphocyte development and

**Table 3**  
HLA associations in PBC.

Risk conferring		*
HLA-DQA1*04:01-HLA-DQB1*04:02-HLA-DRB1*08:01-HLA-B*39:05	[51,52]	*
HLA-DRB1*04:04-HLA-DQB1*03:02	[51,52]	*
HLA-DRB1*14-HLA-DPB1*03:01	[113]	*
HLA-DRB1*08:03-HLA-DQB1*06:01	[95,114]	Jap, Chin
HLA-DRB1*04:05-HLA-DQB1*04:01	[95]	Jap
<b>Protective</b>		
HLA-DQB1*06:02-HLA-DRB1*15:01-HLA-DQA1*01:02-HLA-B*07:02	[51,52]	*
HLA-DQB1*03:01-HLA-DRB1*11:01-HLA-DQA1*05:01-HLA-DRB1*11:04	[51,52,114]	*
HLA-DRB1*13:02-HLA-DQB1*06:04	[95]	Jap
HLA-DRB1*11:01-HLA-DQB1*03:01	[95]	Jap

\* Dense SNV analysis and subsequent conditional analysis of this HLA haplotype in the Italian cohort has suggested that risk-conferring/protective effects are predominantly due to variants in HLA-DRB1 with associated linkage disequilibrium [113]. Data from a relatively small study of Chinese support observations in that population, but require confirmation [114].



**Fig. 2.** PBC shares risk loci with multiple other autoimmune diseases. Circos plot [110] of gene variants associated with PBC and other selected autoimmune conditions in high-throughput genetics studies and their meta-analyses. Note that significant pleiotropy exists with some loci implicated in multiple conditions and variable HLA associations a universal feature. PBC = primary biliary cirrhosis; AA = alopecia areata; AIH = autoimmune hepatitis; AS = ankylosing spondylitis; ATD = autoimmune thyroid disease; JIA = juvenile idiopathic arthritis; MG = myasthenia gravis; MS = multiple sclerosis; Narc = narcolepsy; PSC = primary sclerosing cholangitis; Pso = psoriasis; RA = rheumatoid arthritis; Scl = scleroderma; Sjögren = Sjögren's syndrome; SLE = systemic lupus erythematosus; T1DM = type 1 diabetes mellitus; UC = ulcerative colitis; Vit = vitiligo. Only validated associations at  $p < 5 \times 10^{-8}$  are included; supporting citations available at request.

also for maintenance of T cell populations in the periphery. Mice deficient in IL-7R have markedly reduced thymic and splenic lymphoid cellularity [63]. IL-7R mutations represent one of a heterogeneous group of genetic lesions that cause Omenn syndrome, a condition characterized by reduced variation in the T cell repertoire with immune dysregulation, autoimmunity and a graft-versus host disease phenotype [64]. IL-7R is induced upon T cell positive selection and controls thymic CD8<sup>+</sup> lineage specification and peripheral naive T-cell homeostasis [23] while also having a role in myeloid cell differentiation [24]. IL7R expression is generally reduced in Treg cells compared to other T cells [65].

#### 4.4. Other T cell associated genes

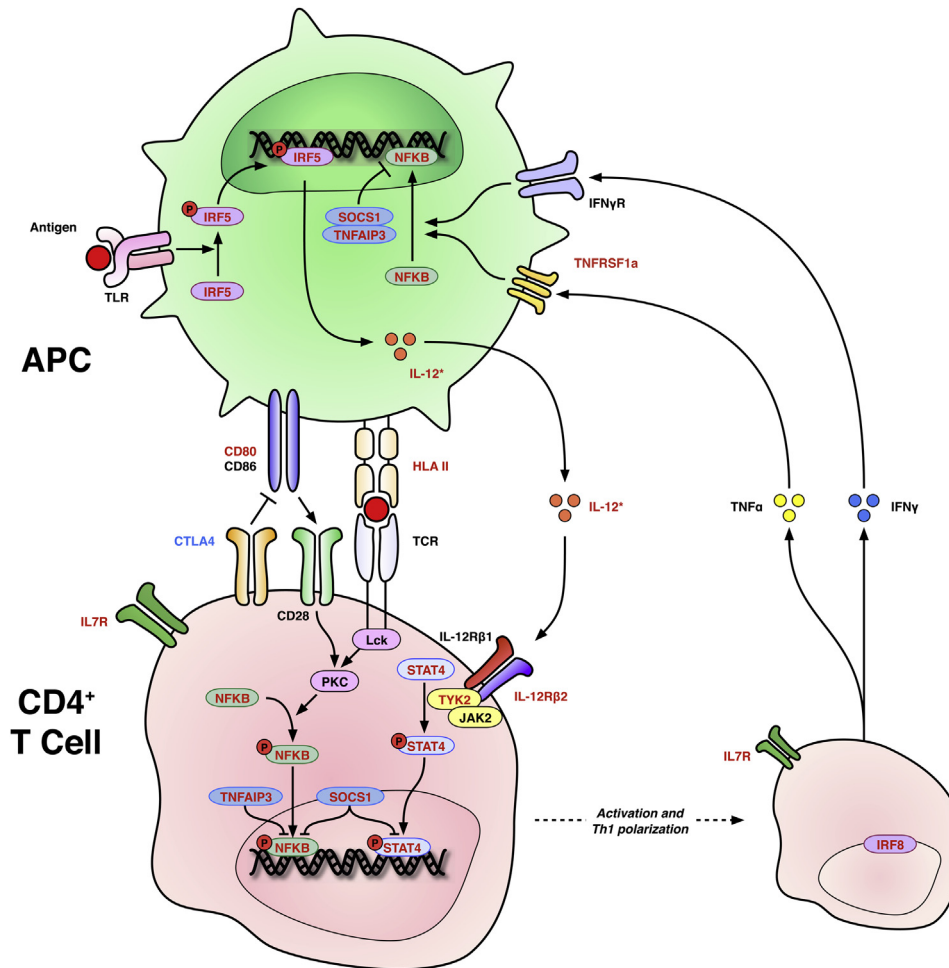
*IKZF3* encodes Ikaros family zinc finger protein 3, also known as Aiolos. The gene is one of a family of hematopoietic transcription factors and is involved in lymphocyte development and proliferation, especially in B cells [66]. A link to autoimmunity is implied by

the lupus-like syndrome that develops in *IKZF3* knock-out mice [67]. Subsequent work has also linked this protein to Th17 development through an interaction with the IL2 receptor, disruption of which underlies PBC in one mouse model of disease ([68]; see above).

*SH2B3* encodes a member of the SH2B adaptor proteins known as SH2B3 or Lnk, and maps to a widely shared autoimmune disease locus. Lnk is involved in multiple growth factor and cytokine signaling pathways, is a negative regulator of T cell activation, tumor necrosis factor and Janus kinase 2 and 3 (JAK2/3) signaling and is required for normal hematopoiesis. Mice deficient in *SH2B3* have greater levels of activated T cells and a tendency to autoimmunity [69].

#### 4.5. B cell development, signaling and migration

In addition to genes encoding proteins such as IL7R and IRFs, expressed in T as well as B cells, results of genetic studies have



**Fig. 3.** Schematic representation of CD4<sup>+</sup> T cell activation by antigen presenting cells and the IL-12/STAT4 pathway. Antigen activates APC through TLR, which in turn produce IL-12 after phosphorylation of IRF5. Antigen is presented to CD4<sup>+</sup> T cells by HLA II with co-stimulation via CD80 and 86 to CD28. There is competitive inhibition of this co-stimulation by CTLA4. IL-12 activates a cascade of signaling factors including NFkB and STAT4 to promote the production of Th1-type cytokines including TNF $\alpha$  and IFN $\gamma$ ; the transcription factor IRF8 is involved. IL7R supports lymphocyte development. There is positive feedback from Th1 cytokines to APCs. Red text denotes confirmed risk associations with PBC; blue text putative associations. Arrows denote positive effects; barred lines denote negative effects. APC = antigen-presenting cell; CD = cluster of differentiation; CTLA4 = Cytotoxic T lymphocyte antigen 4; HLA II = human leucocyte antigen class II; IFN- $\gamma$  = interferon- $\gamma$ ; IFN $\gamma$ R = interferon- $\gamma$  receptor; IL-12 = interleukin-12; IL-12R $\beta$ 1/2 and IL-12 receptor  $\beta$  subunits 1 and 2; IL7R = interleukin-7 receptor; IRF5 and IRF8 = interferon response factors 5 and 8; JAK2 = Janus kinase 2; Lck = lymphocyte-specific protein tyrosine kinase; NFkB = nuclear factor kappa-light-chain-enhancer of activated B cells; PKC = protein kinase C; SOCS1 = suppressor of cytokine signaling 1; STAT4 = signal transducer and activator of transcription 4; TCR = T-cell receptor; TLR = Toll-like receptor; TNFAIP3 = tumor necrosis factor alpha-induced protein 3; TNFRSF1a = Tumor necrosis factor receptor superfamily 1a; TNF $\alpha$  = tumour necrosis factor alpha; TYK2 = Tyrosine kinase 2. (For interpretation of the references to colour in this figure legend, the reader is referred to the web version of this article.)

identified a number of PBC risk loci containing genes that imply a role for B cells in PBC. CD80, for example, is key in the germinal center focused humoral response to immunization and the chemokine receptor, CXCR5, is involved in the migration of both T and B cells to sites of antibody production along gradients of CXCL13. CXCR5 is constitutively expressed on mature B cells and induced on T follicular helper cells in response to antigen [70] and its deficiency is associated with impaired germinal center responses.

*POU2AF1* also known as Oct binding factor 1 (OBF1), is a transcription factor involved in the transcription of a number of B cell specific proteins. Mice deficient for this protein have a reduced B cell repertoire, striking reductions in class-switched immunoglobulins and disordered germinal center formation [71].

#### 4.6. TNF ligands and receptors

TNFRSF1A encodes a member of the tumor necrosis factor family of receptors. It is predominantly expressed on antigen-

presenting cells and represents a major receptor for tumor necrosis factor alpha (TNF $\alpha$ ). Activation of this receptor can cause apoptosis through activation of NFkB and mutations leading to its constitutive activation are associated with periodic fever syndrome [72].

Loci containing two TNF receptor ligands have also been associated with risk for PBC. These proteins include TNFSF15 (or TNF-like ligand TL1A) which encodes a vascular endothelial growth inhibitor primarily expressed on endothelia with little expression in the liver (<http://proteinatlas.org>). Ligation with its cognate receptor DR3, which is chiefly expressed on lymphocytes, may induce apoptosis, but is also associated with costimulation, mucosal hyperplasia and autoimmune inflammation [73]. TNFSF11, or receptor activator of nuclear factor kappa-B ligand (RANKL) or TNF-related activation-induced cytokine (TRANCE) is also a TNFR ligand. This protein plays a major role in NFkB mediated control of osteoclast activity, but also has activity as a dendritic cell survival factor through the control of apoptosis. Deficiency results in impaired

lymphocyte differentiation [74].

#### 4.7. Other signaling molecules

The transcription factor NF $\kappa$ B plays important roles in both the innate and adaptive immune system [61,75], influencing both B and T cell activation downstream of the antigen receptors and its promoting inflammatory responses. NF $\kappa$ B1 encodes the p50 subunit of NF $\kappa$ B by way of a precursor p105 and NF $\kappa$ B-deficient mice show many immune defects including susceptibility to various bacteria and impaired induction of lymphocyte antibody responses and proliferation [76].

IRF5 and IRF8 encode two members of the interferon response factor family: a set of transcription factors central to the control of type 1 interferon production and response [77]. IRF5 is ubiquitously expressed, upregulated by type 1 interferons and is activated by Toll-like receptor ligation so as to promote downstream transcription of IL6, IL12 and TNF $\alpha$ . IRF8 is key to generating Th1 type responses and is induced by IFN $\gamma$ . Its deficiency in mice confers susceptibility to intracellular infection [78].

CCL20 is a chemoattractant for lymphocytes, and to a lesser degree, neutrophils and is strongly expressed in the liver [79]. In human alcoholic hepatitis, its expression has been linked to disease severity, and in mouse models of hepatitis, its silencing ameliorates inflammation and production of pro-fibrotic mediators [80]. CCR6 – the receptor for CCL20 – has been reported as being important for the positioning of pathogenic Th17 T cells in the inflamed liver, particularly in PBC liver, in which CCR6 concentrates around bile ducts [81].

#### 4.8. Other genes

A number of other variants within genes involved in key immunological pathways have been suggested by GWAS data, but not attained genome-wide significance. An example is *CTLA4* which encodes a protein expressed on T cells and which competes with CD28 for binding to CD80 and CD86, thus reducing pro-effector signaling through CD28 (Fig. 1) [82,83]. Also of interest, but not yet of proven significance, is *ICOSL*, the cognate ligand of inducible costimulator or ICOS (Fig. 2). ICOS is a member of the CD28 family that is minimally expressed on unactivated T cells, but is rapidly upregulated after stimulation through the T-cell receptor and CD28. Excessive ICOS expression is associated with multi-system autoimmunity [84].

It is likely that an increasing number of risk-affecting variants will be identified as the numbers of participants in genetic studies increases and additional meta-analyses are performed.

### 5. Epistasis, missing heritability and selection pressure

In the majority of instances the odds ratios for any individual risk variant associated with PBC are modest and close to or lower than 1.5 (Table 2). Calculations of the risk for disease conferred by all the known PBC susceptibility alleles together suggest these alleles account for only 5.3% of the heritable risk for this disease [85]. This low number may relate, at least in part to limitations to GWAS studies such as frequency of the studied variants and sample size [44]. It is also possible that shared environmental traits and gene-environmental interactions inflate perceived heritability or that the gap between calculated and observed heritability may be partially explained by epistasis. In epistatic interactions, the effects of one variant may be dependent on the presence and effects of one or more other variants. One example of such interactions in PBC, is the risk-conferring epistatic interaction between the 1p31 (IL12RB2) and 7q32 (IRF5) loci [51]. A potential risk-amplifying

interaction between CTLA4 and TNF $\alpha$  variants has also been reported [83].

### 6. Epigenetics

A necessary corollary to the discordance seen in some monozygotic twins is the influence of epigenetic factors. Several environmental factors have been proposed and these are well reviewed elsewhere [86]. Specific epigenetic observations may however partly explain a deficiency in our understanding of the genetic basis of PBC to date: the lack of an explanation for female predominance, including the lack of identified risk loci on the X chromosome. A major observation was that rates of X chromosome monosomy in peripheral leukocytes – i.e. the presence of a single X chromosome in a usually diploid cell – are higher in PBC patients than hepatitis C or healthy controls after correction for age, with which monosomy correlates [87]. Subsequent similar observations have been made in other autoimmune diseases and the observation that autoimmunity is significantly more common in patients with constitutive monosomy X: Turner's syndrome [88,89]. Intriguingly, there is also an increased rate of Y chromosome loss in men with PBC [90].

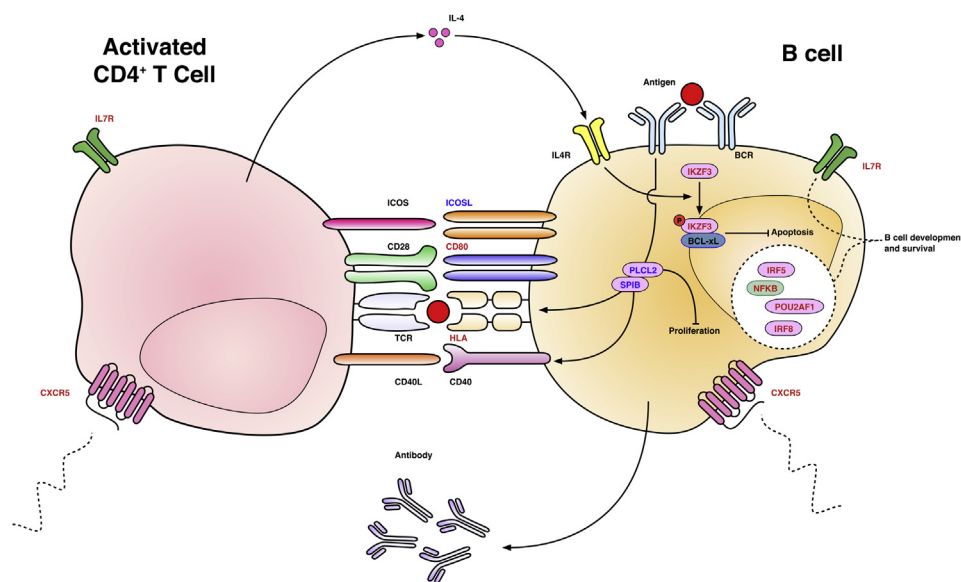
In healthy women, one X chromosome homologue is inactivated by heterochromatin packaging, DNA methylation, reduced histone acetylation and other mechanisms resulting in gene silencing. In PBC, it has been demonstrated that while X inactivation appears to be random, there is preferential loss in cells with X monosomy in contrast to that seen in health [91]. In related work, the methylation states of genes that escape modification in X chromosome inactivation to variable degrees were examined in monozygotic PBC twin pairs. In the small number of samples that were available to process, no significant differences in methylation status were observed. A further epigenetic observation of particular interest given the role of CD40-CD40L in T:B cell interactions (Fig. 4) is that there is reduced methylation of CD40L promoter regions amongst PBC patients compared with controls and that this correlates with serum IgM [92].

Two studies have reported microRNA expression in PBC. Building on their work describing the anion exchanger 2 (AE2) deficient mouse [26], one group have described upregulated microRNA-506 (miR-506) – which downregulates AE2 – in PBC BECs by in situ hybridization and also by BEC culture with anti-miR506 increasing AE2 activity [93]. A second group work from PBC and control explant liver samples demonstrated down-regulation of miR-122a and miR-26a with upregulation of miR-328 and miR-299-5p [94]. All of these microRNAs are implicated in key mechanisms in PBC pathogenesis including apoptosis and the response to oxidative stress and are therefore worthy of further investigation.

### 7. Relating immunogenetic observations to clinical phenotypes

As summarized above, multiple HLA haplotypes have been associated with risk for PBC and also with specific phenotypes. A study of Japanese patients, for example, has reported an association of the HLA DRB1\*04:05 and DRB1\*08:03, alleles with presence of anti-gp210 and anti-centromere antibodies, respectively, which are in turn associated with rapidly progressing disease and with concurrent systemic sclerosis and portal hypertension, respectively. Presence of the rs9277535 variant at the *HLA-DPB1* locus in PBC patients has also been associated with expression of anti-sp100 antibodies [50] and in Japanese PBC patients, the DRB1\*09:01-DQB1\*03:03 haplotype has been associated with increased tendency for progression to need for transplantation [95], an association not yet confirmed in European populations.





**Fig. 4.** Schematic representation of T-cell:B-cell interaction demonstrating genes with variants associated with PBC. Antigen binds B-cell receptor triggering multiple events including the suppression of apoptosis by BCL-xL in a mechanism involving the phosphorylation of IKZF3. B-cell receptor signaling is also partly mediated by the transcription factor SPIB and PLCL2; the former is involved with differentiation and the latter controls subsequent proliferation. B cells present antigen to T cells on MHC class II. Multiple co-stimulatory molecules promote both B cell activation and continued T cell activation: ICOS-ICOSL, CD28-CD80/CD86, CD40L-CD40. IL7R is involved in the development of both T and B cells. A number of other factors key to B cell development and survival are associated with PBC risk (IRF5, IRF8, NFKB and POU2AF1). CXCR5 guides both B and T cell positioning along CXCL13 chemokine gradients and facilitates migration to germinal centres. Red text denotes confirmed risk associations with PBC; blue text putative associations. Arrows denote positive effects; barred lines denote negative effects. BCR = B-cell receptor; IL-4 = interleukin-4; IL7R = Interleukin-7 receptor; ICOS(L) = inducible co-stimulator (ligand); PLCL2 = phospholipase C-like 2 protein; TCR = T-cell receptor; IRF5 & 8 = interferon regulatory factors 5 & 8; SPIB = Spi-B; NFKB = nuclear factor kappa-light-chain-enhancer of activated B cells; POU2AF1 = POU class 2 associating factor 1; IKZF3 = Ikaros family zinc finger protein 3; CXCR5 = chemokine (C-X-C motif) receptor 5.

### 7.1. Non-HLA associations

Development of biliary cirrhosis weeks after initiating IFN $\gamma$  therapy has been reported in one patient with IL-12 deficiency-related tuberculosis [96] and in a second patient with tuberculosis and autoantibodies to IFN $\gamma$ , unspecified non-specific cholangitis developed together with multi-system autoimmunity following IFN $\gamma$  treatment [97]. Unfortunately, the patients' autoantibody profiles or hepatic histology were not reported for these patients and while IL-12 deficiency in the first case may be relevant to the phenotypes, another and more likely possibility is that exogenous interferon induced the autoimmunity [98]. Variants at the *IL12A* locus do appear, however, to have some effect on the risk of PBC recurrence after transplantation, although the immunosuppression regime chosen is also relevant to this development [99].

As mentioned above, the association of CXCR5 variants with PBC risk points to the involvement of both B and T cells destined to migrate to germinal centers. Consistently, numbers of peripheral T-follicular helper (Tfh) cells have been reported in PBC as compared with control and autoimmune hepatitis subjects. Such elevations in Tfh were also correlated with lack of biochemical response to UDCA [100,101]. Of related interest is the observation that expression of the CXCR5 ligand, CXCL13, is upregulated in the spleens of PBC patients, but not in spleens of patients with chronic viral hepatitis [102].

A variety of variants have been associated with particular disease sub-phenotypes in PBC, but most of these have not been validated. In one study, for example, PBC susceptibility and progression was associated with specific variants in *TNF $\alpha$* , *CTLA4* and *AE2* genes [103], but these genes have been identified by subsequent GWAS or ImmunoChIP data.

In follow-up studies of GWAS datasets, associations of *STAT4* variation with ANA status and *CTLA4* variants with anti-centromere and gp210 have been identified in Japanese PBC patients [104] and

*TNFSF15* polymorphisms have been linked to functional changes in the gene product. Differences in mRNA and protein expression were also seen in both PBC and healthy subjects carrying this variant, although a link to outcome or phenotype remains unclear [105].

### 8. Translating immunogenetic observations to novel therapies

To date, a single proof-of-concept study has examined the effect of the anti-human IL-12 and IL-23 agent ustekinumab in PBC [106] and revealed no significant change in the primary outcome measure of serum alkaline phosphatase. By contrast, ustekinumab is efficacious in the T-cell mediated disease psoriasis, which also has an IL-12 signature, but IL-23 antagonism alone is also highly effective in that disease [107].

Building on genetic observations and those seen in murine studies [108], a trial of the CTLA4 fusion protein abatacept is now underway in PBC patients (NCT02078882). Inhibition of CD40-CD40L interactions is also being studied as a PBC treatment option, these proteins not being specifically highlighted by genetic association data, but represent key players in T cell:B cell interactions (Fig. 4; NCT02193360). As noted above, differences in CD40L promoter methylation are reported in PBC [92].

### 9. Conclusion

PBC is a complex classical autoimmune disease with a clear heritable component intertwined with strong environmental influences. There is also now very strong evidence linking PBC to numerous immune pathways, especially those centering on antigen-presentation to T cells.

PBC also remains a therapeutically challenging disease because our increased understanding of its immune basis has not yet

translated to marked improvements in patient care [109]. Variants in key immunologic pathways highlight genes involved primarily in the adaptive immune system including antigen-presenting cells, B cells and especially T cells. Of particular note are the genes related to the IL-12-STAT4 Th1-polarizing pathway. These data provide the framework for further animal work, prospective analysis of patient populations and, ultimately the discovery and/or application of novel or repurposed therapeutic agents. Select animal studies suggest that the gene targets identified may have hepato-protective as well as risk effects, but further work is necessary to connect genetic associations to clinical presentation and outcomes. The immunogenetic future lies in larger, finer resolution, high-throughput genetic studies coupled to careful assessment of patient characteristics and trials informed by biological studies.

## Acknowledgements

GW is a Medical Research Council Clinical Research Training Fellow. GH is a co-investigator for UK-PBC ([www.uk-pbc.com](http://www.uk-pbc.com)) supported by a Stratified Medicine Award from the UK Medical Research Council, and Principal Investigator for UK-PSC, a NIH Rare Disease Translational Collaboration.

The views expressed are those of the authors(s) and not necessarily those of the National Health System, the National Institute for Health Research, or the Department of Health.

## References

- G.M. Hirschfield, M.E. Gershwin, The immunobiology and pathophysiology of primary biliary cirrhosis, *Annu. Rev. Pathol. Mech. Dis.* 8 (1) (2013) 303–330.
- K. Boonstra, U. Beuers, C.Y. Ponsioen, Epidemiology of primary sclerosing cholangitis and primary biliary cirrhosis: A systematic review, *J. Hepatol.* 56 (5) (2012) 1181–1188.
- F.E. Watt, O.F.W. James, D.E.J. Jones, Patterns of autoimmunity in primary biliary cirrhosis patients and their families: a population-based cohort study, *QJM* 97 (7) (2004) 397–406.
- E.C. Somers, et al., Are individuals with an autoimmune disease at higher risk of a second autoimmune disorder? *Am. J. Epidemiol.* 169 (6) (2009) 749–755.
- M.E. Gershwin, et al., Identification and specificity of a cDNA encoding the 70 kd mitochondrial antigen recognized in primary biliary cirrhosis, *J. Immunol.* 138 (10) (1987) 3525–3531.
- D.P. Bogdanos, L. Komorowski, Disease-specific autoantibodies in primary biliary cirrhosis, *Clin. Chim. Acta* 412 (7–8) (2011) 502–512.
- C. Migliaccio, et al., Monoclonal antibodies to mitochondrial E2 components define autoepitopes in primary biliary cirrhosis, *J. Immunol. Baltim. Md.* 1950 161 (10) (1998) 5157–5163.
- S. Matsumura, et al., Contribution to antimicrobial antibody production: cleavage of pyruvate dehydrogenase complex-E2 by apoptosis-related proteases, *Hepatology* 35 (1) (2002) 14–22.
- K. Tsuneyama, et al., Human combinatorial autoantibodies and mouse monoclonal antibodies to PDC-E2 produce abnormal apical staining of salivary glands in patients with coexistent primary biliary cirrhosis and Sjogren's syndrome, *Hepatology* 20 (4 Pt 1) (1994) 893–898.
- E. Hashimoto, et al., Immunohistochemical characterization of hepatic lymphocytes in primary biliary cirrhosis in comparison with primary sclerosing cholangitis and autoimmune chronic active hepatitis, *Mayo Clin. Proc.* 68 (11) (1993) 1049–1055.
- S. Shimoda, et al., Identification and precursor frequency analysis of a common T cell epitope motif in mitochondrial autoantigens in primary biliary cirrhosis, *J. Clin. Invest.* 102 (10) (1998) 1831–1840.
- H. Kita, et al., Quantitative and functional analysis of PDC-E2-specific autoreactive cytotoxic T lymphocytes in primary biliary cirrhosis, *J. Clin. Invest.* 109 (9) (2002) 1231–1240.
- N. Baba, et al., Gene expression profiling in biliary epithelial cells of primary biliary cirrhosis using laser capture microdissection and cDNA microarray, *Transl. Res.* 148 (3) (2006) 103–113.
- J.J. Van den Oord, R. Sciort, V.J. Desmet, Expression of MHC products by normal and abnormal bile duct epithelium, *J. Hepatol.* 3 (3) (1986) 310–317.
- C. Barbatis, et al., Immunocytochemical analysis of HLA class II (DR) antigens in liver disease in man, *J. Clin. Pathol.* 40 (8) (1987) 879–884.
- T. Nagano, et al., Cytokine profile in the liver of primary biliary cirrhosis, *J. Clin. Immunol.* 19 (6) (1999) 422–427.
- K. Harada, et al., In situ nucleic acid hybridization of cytokines in primary biliary cirrhosis: predominance of the Th1 subset, *Hepatology* 25 (4) (1997) 791–796.
- M. Fracchia, et al., Serum interferon gamma in primary biliary cirrhosis: effect of ursodeoxycholic acid and prednisone therapy alone and in combination, *Eur. J. Gastroenterol. Hepatol.* 12 (4) (2000) 463–468.
- T. Yamano, et al., Serum interferon-gamma-inducing factor/IL-18 levels in primary biliary cirrhosis, *Clin. Exp. Immunol.* 122 (2) (2000) 227–231.
- C.-Y. Yang, et al., IL-12/Th1 and IL-23/Th17 biliary microenvironment in primary biliary cirrhosis: implications for therapy, *Hepatology* 59 (2014) 1944–1953.
- G. Rong, et al., Imbalance between T helper type 17 and T regulatory cells in patients with primary biliary cirrhosis: the serum cytokine profile and peripheral cell population, *Clin. Exp. Immunol.* 156 (2) (2009) 217–225.
- J.A. Daniels, et al., Immunostaining of plasma cells in primary biliary cirrhosis, *Am. J. Clin. Pathol.* 131 (2) (2009) 243–249.
- W. Zhang, et al., Deficiency in regulatory T cells results in development of antimicrobial antibodies and autoimmune cholangitis, *Hepatology* 49 (2) (2008) 545–552.
- S. Oertelt, et al., Anti-mitochondrial antibodies and primary biliary cirrhosis in TGF-beta receptor II dominant-negative mice, *J. Immunol. Baltim. Md.* 1950 177 (3) (2006) 1655–1660.
- K. Wakabayashi, et al., IL-2 receptor  $\alpha$ -/- mice and the development of primary biliary cirrhosis, *Hepatology* 44 (5) (2006) 1240–1249.
- J.T. Salas, et al., Ae2a,b-deficient mice develop antimicrobial antibodies and other features resembling primary biliary cirrhosis, *Gastroenterology* 134 (5) (2008) 1482–1493.
- J. Irie, et al., NOD.c3c4 congenic mice develop autoimmune biliary disease that serologically and pathogenetically models human primary biliary cirrhosis, *J. Exp. Med.* 203 (5) (2006) 1209–1219.
- J. Mattner, et al., Liver autoimmunity triggered by microbial activation of natural killer T cells, *Cell Host Microbe* 3 (5) (2008) 304–315.
- K. Wakabayashi, et al., Induction of autoimmune cholangitis in non-obese diabetic (NOD).1101 mice following a chemical xenobiotic immunization, *Clin. Exp. Immunol.* 155 (3) (2009) 577–586.
- Y. Yao, et al., Distinct from its canonical effects, deletion of IL-12p40 induces cholangitis and fibrosis in interleukin-2R $\alpha$ -/- mice, *J. Autoimmun.* 51 (c) (2014) 99–108.
- M. Tsuda, et al., Deletion of interleukin (IL)-12p35 induces liver fibrosis in dominant-negative TGFbeta receptor type II mice, *Hepatology* 57 (2) (2013) 806–816.
- K. Yoshida, et al., Deletion of interleukin-12p40 suppresses autoimmune cholangitis in dominant negative transforming growth factor beta receptor type II mice, *Hepatology* 50 (5) (2009) 1494–1500.
- C. Selmi, et al., Primary biliary cirrhosis in monozygotic and dizygotic twins: genetics, epigenetics, and environment, *YGASt* 127 (2) (2004) 485–492.
- K.N. Lazaridis, et al., Increased prevalence of antimicrobial antibodies in first-degree relatives of patients with primary biliary cirrhosis, *Hepatology* 46 (3) (2007) 785–792.
- A. Mantaka, et al., Primary biliary cirrhosis in a genetically homogeneous population: disease associations and familial occurrence rates, *BMC Gastroenterol.* 12 (1) (2012), 1–1.
- C. Selmi, et al., Genes and (auto)immunity in primary biliary cirrhosis, *Genes. Immun.* 6 (7) (2005) 543–556.
- D.E. Jones, et al., Familial primary biliary cirrhosis reassessed: a geographically-based population study, *J. Hepatol.* 30 (3) (1999) 402–407.
- M.E. Gershwin, et al., Risk factors and comorbidities in primary biliary cirrhosis: A controlled interview-based study of 1032 patients, *Hepatology* 42 (5) (2005) 1194–1202.
- L. Arbour, et al., Characteristics of primary biliary cirrhosis in British Columbia's first nations population, *Can. J. Gastroenterol.* 19 (5) (2005) 305–310.
- J. Delgado, et al., The epidemiology of primary biliary cirrhosis in southern Israel, *Israel Med. Assoc. J. IMAJ* 7 (11) (2005) 717–721.
- K. Tsuji, et al., Familial primary biliary cirrhosis in Hiroshima, *J. Autoimmun.* 13 (1) (1999) 171–178.
- M. Parkes, et al., Genetic insights into common pathways and complex relationships among immune-mediated diseases, *Nat. Rev. Genet.* 14 (9) (2013) 661–673.
- C.J. Lessard, et al., The genomics of autoimmune disease in the era of genome-wide association studies and beyond, *Autoimmun. Rev.* 11 (4) (2012) 267–275.
- T.A. Manolio, et al., Finding the missing heritability of complex diseases, *Nature* 461 (7265) (2009) 747–753.
- G.M. Hirschfield, et al., Primary biliary cirrhosis associated with HLA, IL12A, and IL12RB2 Variants, *N. Engl. J. Med.* 360 (24) (2009) 2544–2555.
- X. Liu, et al., Genome-wide meta-analyses identify three loci associated with primary biliary cirrhosis, *Nature Publishing Group* 42 (8) (2010) 658–660.
- G.F. Mells, et al., Genome-wide association study identifies 12 new susceptibility loci for primary biliary cirrhosis, *Nat. Genet.* 43 (4) (2011) 329–332.
- M. Nakamura, et al., Genome-wide association study identifies TNFSF15 and POU2AF1 as susceptibility loci for primary biliary cirrhosis in the Japanese population, *Am. J. Hum. Genet.* 91 (4) (2012) 721–728.
- H.J. Cordell, et al., International genome-wide meta-analysis in primary biliary cirrhosis discovers six new risk loci and highlights the role of JAK-STAT/IL12/IL27 signaling and cytokine-cytokine pathways in disease etiology, *Nat. Commun.* (2015) 1–13 (in press).
- G.M. Hirschfield, et al., Variants at IRF5-TNPO3, 17q12-21 and MMEL1 are

- associated with primary biliary cirrhosis, *Nature Publishing Group* 42 (8) (2010) 655–657.
- [51] B.D. Juran, et al., Immunochip analyses identify a novel risk locus for primary biliary cirrhosis at 13q14, multiple independent associations at four established risk loci and epistasis between 1p31 and 7q32 risk variants, *Hum. Mol. Genet.* 21 (23) (2012) 5209–5221.
- [52] J.Z. Liu, et al., Dense fine-mapping study identifies new susceptibility loci for primary biliary cirrhosis, *Nature Publishing Group* 44 (10) (2012) 1137–1141.
- [53] G. Ercilla, et al., Primary biliary cirrhosis associated with HLA-DRw3, *Tissue Antigens* 14 (5) (1979) 449–452.
- [54] M.P. Manns, et al., HLA DRw8 and complement C4 deficiency as risk factors in primary biliary cirrhosis, *Gastroenterology* 101 (5) (1991) 1367–1373.
- [55] P. Invernizzi, et al., Human leukocyte antigen polymorphisms in Italian primary biliary cirrhosis: a multicenter study of 664 patients and 1992 healthy controls, *Hepatology* 48 (6) (2008) 1906–1912.
- [56] I.T. Chow, et al., Differential binding of pyruvate dehydrogenase complex-E2 epitopes by DRB1\*08:01 and DRB1\*11:01 is predicted by their structural motifs and correlates with disease risk, *J. Immunol.* 190 (9) (2013) 4516–4524.
- [57] M. Ishizaki, et al., Involvement of tyrosine kinase-2 in both the IL-12/Th1 and IL-23/Th17 axes in vivo, *J. Immunol.* 187 (1) (2011) 181–189.
- [58] H.-C. Chang, et al., Impaired development of human Th1 cells in patients with deficient expression of STAT4, *Blood* 113 (23) (2009) 5887–5890.
- [59] Z. Yang, et al., Autoimmune diabetes is blocked in Stat4-deficient mice, *J. Autoimmun.* 22 (3) (2004) 191–200.
- [60] L. Vereecke, R. Beyaert, G. van Loo, The ubiquitin-editing enzyme A20 (TNFAIP3) is a central regulator of immunopathology, *Trends Immunol.* 30 (8) (2009) 383–391.
- [61] J. Strebovsky, et al., Suppressor of cytokine signaling 1 (SOCS1) limits NF- $\kappa$ B signaling by decreasing p65 stability within the cell nucleus, *FASEB J.* 25 (3) (2011) 863–874.
- [62] K.L. Good-Jacobson, et al., CD80 expression on B cells regulates murine T follicular helper development, germinal center B cell survival, and plasma cell generation, *J. Immunol.* 188 (9) (2012) 4217–4225.
- [63] J.J. Peschon, et al., Early lymphocyte expansion is severely impaired in interleukin 7 receptor-deficient mice, *J. Exp. Med.* 180 (5) (1994) 1955–1960.
- [64] A. Liston, A. Enders, O.M. Siggs, Unravelling the association of partial T-cell immunodeficiency and immune dysregulation, *Nat. Rev. Immunol.* 8 (7) (2008) 545–558.
- [65] W. Liu, CD127 expression inversely correlates with FoxP3 and suppressive function of human CD4+ T reg cells, *J. Exp. Med.* 203 (7) (2006) 1701–1711.
- [66] S. Ma, et al., Ikaros and Aiolos inhibit pre-B-cell proliferation by directly suppressing c-Myc expression, *Mol. Cell Biol.* 30 (17) (2010) 4149–4158.
- [67] J. Sun, et al., Lack of the transcriptional coactivator OBF-1 prevents the development of systemic lupus erythematosus-like phenotypes in Aiolos mutant mice, *J. Immunol.* 170 (4) (2003) 1699–1706.
- [68] F.J. Quintana, et al., Aiolos promotes TH17 differentiation by directly silencing IL2 expression, *Nat. Immunol.* 13 (8) (2012) 770–777.
- [69] H. Katayama, et al., Lnk prevents inflammatory CD8(+) T-cell proliferation and contributes to intestinal homeostasis, *Eur. J. Immunol.* 44 (6) (2014) 1622–1632.
- [70] N.M. Haynes, et al., Role of CXCR5 and CCR7 in follicular Th cell positioning and appearance of a programmed cell death gene-1-high germinal center-associated subpopulation, *J. Immunol.* 179 (8) (2007) 5099–5108.
- [71] D.B. Schubart, et al., B-cell-specific coactivator OBF-1/OCA-B/Bob1 required for immune response and germinal centre formation, *Nature* 383 (6600) (1996) 538–542.
- [72] T. Kumpfel, R. Hohlfield, Multiple sclerosis, TNFRSF1A, TRAPS and multiple sclerosis, *Nat. Rev. Neurol.* 5 (10) (2009) 528–529.
- [73] F. Meylan, A.C. Richard, R.M. Siegel, TL1A and DR3, a TNF family ligand-receptor pair that promotes lymphocyte costimulation, mucosal hyperplasia, and autoimmune inflammation, *Immunol. Rev.* 244 (1) (2011) 188–196.
- [74] E.A. Green, R.A. Flavell, TRANCE-RANK, a new signal pathway involved in lymphocyte development and T cell activation, *J. Exp. Med.* 189 (7) (1999) 1017–1020.
- [75] M.S. Hayden, S. Ghosh, NF- $\kappa$ B, the first quarter-century: remarkable progress and outstanding questions, *Genes Dev.* 26 (3) (2012) 203–234.
- [76] W.C. Sha, et al., Targeted disruption of the p50 subunit of NF- $\kappa$ B leads to multifocal defects in immune responses, *Cell* 80 (2) (1995) 321–330.
- [77] K. Honda, T. Taniguchi, IRFs: master regulators of signalling by Toll-like receptors and cytosolic pattern-recognition receptors, *Nat. Rev. Immunol.* 6 (9) (2006) 644–658.
- [78] K. Turcotte, et al., Icsbp1/IRF-8 is required for innate and adaptive immune responses against intracellular pathogens, *J. Immunol.* 179 (4) (2007) 2467–2476.
- [79] K. Hieshima, et al., Molecular cloning of a novel human CC chemokine liver and activation-regulated chemokine (LARC) expressed in liver. Chemotactic activity for lymphocytes and gene localization on chromosome 2, *J. Biol. Chem.* 272 (9) (1997) 5846–5853.
- [80] S. Affo, et al., CCL20 mediates lipopolysaccharide induced liver injury and is a potential driver of inflammation and fibrosis in alcoholic hepatitis, *Gut* 63 (11) (2014) 1782–1792.
- [81] Y.H. Oo, et al., CXCR3-dependent recruitment and CCR6-mediated positioning of Th-17 cells in the inflamed liver, *J. Hepatol.* 57 (5) (2012) 1044–1051.
- [82] K. Agarwal, et al., CTLA-4 gene polymorphism confers susceptibility to primary biliary cirrhosis, *J. Hepatol.* 32 (4) (2000) 538–541.
- [83] B.D. Juran, et al., Carriage of a tumor necrosis factor polymorphism amplifies the cytotoxic T-lymphocyte antigen 4 attributed risk of primary biliary cirrhosis: evidence for a gene-gene interaction, *Hepatology* 52 (1) (2010) 223–229.
- [84] T.R. Simpson, S.A. Quezada, J.P. Allison, Regulation of CD4 T cell activation and effector function by inducible costimulator (ICOS), *Curr. Opin. Immunol.* 22 (3) (2010) 326–332.
- [85] Tang, R., et al., The cumulative effects of known susceptibility variants to predict primary biliary cirrhosis risk. (2015) 1–6.
- [86] B.D. Juran, K.N. Lazaridis, Environmental factors in primary biliary cirrhosis, *Semin. Liver Dis.* 34 (3) (2014) 265–272.
- [87] P. Invernizzi, et al., Frequency of monosomy X in women with primary biliary cirrhosis, *Lancet* 363 (9408) (2004) 533–535.
- [88] P. Invernizzi, et al., X chromosome monosomy: a common mechanism for autoimmune diseases, *J. Immunol.* 175 (1) (2005) 575–578.
- [89] K.T. Jorgensen, et al., Autoimmune diseases in women with Turner's syndrome, *Arthritis Rheum.* 62 (3) (2010) 658–666.
- [90] A. Leo, et al., Y chromosome loss in male patients with primary biliary cirrhosis, *J. Autoimmun.* 41 (2013) 87–91.
- [91] M. Miozzo, et al., Preferential X chromosome loss but random inactivation characterize primary biliary cirrhosis, *Hepatology* 46 (2) (2007) 456–462.
- [92] A. Leo, et al., Immunoglobulin M levels inversely correlate with CD40 ligand promoter methylation in patients with primary biliary cirrhosis, *Hepatology* 55 (1) (2012) 153–160.
- [93] J.M. Banales, et al., Up-regulation of microRNA 506 leads to decreased Cl<sup>-</sup>/HCO<sub>3</sub><sup>-</sup> anion exchanger 2 expression in biliary epithelium of patients with primary biliary cirrhosis, *Hepatology* 56 (2) (2012) 687–697.
- [94] K.A. Padgett, et al., Primary biliary cirrhosis is associated with altered hepatic microRNA expression, *J. Autoimmun.* 32 (3–4) (2009) 246–253.
- [95] T. Umemura, et al., Human leukocyte antigen class II molecules confer both susceptibility and progression in Japanese patients with primary biliary cirrhosis, *Hepatology* 55 (2) (2012) 506–511.
- [96] A.S. Pulickal, et al., Biliary cirrhosis in a child with inherited interleukin-12 deficiency, *J. Trop. Pediatr.* 54 (4) (2008) 269–271.
- [97] R. Döffinger, et al., Autoantibodies to interferon-gamma in a patient with selective susceptibility to mycobacterial infection and organ-specific autoimmunity, *Clin. Infect. Dis. Off. Publ. Infect. Dis. Soc. Am.* 38 (1) (2004) e10–4.
- [98] F.L. Dumoulin, et al., Autoimmunity induced by interferon-alpha therapy for chronic viral hepatitis, *Biomed. Pharmacother.* 53 (5–6) (1999) 242–254.
- [99] M. Carbone, et al., Calcineurin inhibitors and the IL12A locus influence risk of recurrent primary biliary cirrhosis after liver transplantation, *Am. J. Transpl.* 13 (4) (2013) 1110–1111.
- [100] L. Wang, et al., CXCR5 +CD4 +T follicular helper cells participate in the pathogenesis of primary biliary cirrhosis, *Hepatology* 61 (2) (2015 Feb) 627–638, <http://dx.doi.org/10.1002/hep.27306>, Epub 2015 Jan 5.
- [101] G.J. Webb, G.M. Hirschfield, Follicles, germinal centers, and immune mechanisms in primary biliary cirrhosis, *Hepatology* 61 (2) (2015) 424–427.
- [102] K. Kikuchi, et al., Splenic lymph follicles generate immunoglobulin M-producing B cells in primary biliary cirrhosis, *Hepatology Res.* 44 (10) (2014 Oct) E253–E256, <http://dx.doi.org/10.1111/hepr.12231>.
- [103] R. Poupon, et al., Genetic factors of susceptibility and of severity in primary biliary cirrhosis, *J. Hepatol.* 49 (6) (2008) 1038–1045.
- [104] Y. Aiba, et al., Genetic polymorphisms in CTLA4 and SLC4A2 are differentially associated with the pathogenesis of primary biliary cirrhosis in Japanese patients, *J. Gastroenterol.* 46 (10) (2011) 1203–1212.
- [105] Y. Hitomi, et al., Human primary biliary cirrhosis-susceptible allele of rs4979462 enhances TNFSF15 expression by binding NF-1, *Hum Genet.* 134 (7) (2015 Jul) 737–747, <http://dx.doi.org/10.1007/s00439-015-1556-3>.
- [106] G.M. Hirschfield, et al., P367 phase 2 study evaluating the efficacy and safety of ustekinumab in patients with primary biliary cirrhosis WHO had an inadequate response to whom it may concern: ursodeoxycholic acid, *J. Hepatol.* 60 (1) (2014) S189–S190.
- [107] T. Kopp, et al., Clinical improvement in psoriasis with specific targeting of interleukin-23, *Nature* 521 (7551) (2015) 222–226.
- [108] A. Dhirapong, et al., Therapeutic effect of cytotoxic T lymphocyte antigen 4/immunoglobulin on a murine model of primary biliary cirrhosis, *Hepatology* 57 (2) (2013) 708–715.
- [109] J.K. Dyson, et al., Unmet clinical need in autoimmune liver diseases, *J. Hepatol.* 62 (1) (2014) 208–218.
- [110] M.I. Krzywinski, et al., Circo: an information aesthetic for comparative genomics, *Genome Res.* 19 (9) (2009 Sep) 1639–1645, <http://dx.doi.org/10.1101/gr.092759.109>.
- [111] X. Liu, et al., Genome-wide meta-analyses identify three loci associated with primary biliary cirrhosis, *Nature Publishing Group* 42 (8) (2010) 658–660, <http://dx.doi.org/10.1002/9780470015902.a0024406>.
- [112] G.F. Mells, G.M. Hirschfield, Genetics of primary biliary cirrhosis, *eLS* (2013).
- [113] P. Invernizzi, et al., Classical HLA-DRB1 and DPB1 alleles account for HLA associations with primary biliary cirrhosis 13 (6) (2012) 461–468.
- [114] D.T. Zhao, et al., Human leukocyte antigen alleles and haplotypes and their associations with antinuclear antibodies features in Chinese patients with primary biliary cirrhosis, *Liver Int.* 34 (2) (2014) 220–226.