



Hydrothermal origin of halogens at Home Plate, Gusev Crater

Mariek E. Schmidt,¹ Steven W. Ruff,² Timothy J. McCoy,¹ William H. Farrand,³ Jeffrey R. Johnson,⁴ Ralf Gellert,⁵ Douglas W. Ming,⁶ Richard V. Morris,⁶ Nathalie Cabrol,⁷ Kevin W. Lewis,⁸ and Christian Schroeder⁶

Received 25 October 2007; revised 22 February 2008; accepted 28 April 2008; published 19 June 2008.

[1] In the Inner Basin of the Columbia Hills, Gusev Crater is Home Plate, an 80 m platform of layered clastic rocks of the Barnhill class with microscopic and macroscopic textures, including a bomb sag, suggestive of a phreatomagmatic origin. We present data acquired by the Spirit Mars Exploration Rover by Alpha Particle X-Ray Spectrometer (APXS), Mössbauer Spectrometer, Miniature Thermal Emission Spectrometer (Mini-TES), and Panoramic Camera (Pancam) for the Barnhill class rocks and nearby vesicular Irvine class basalts. In major element concentrations (e.g., SiO₂, Al₂O₃, MgO, and FeO*), the two rock classes are similar, suggesting that they are derived from a similar magmatic source. The Barnhill class, however, has higher abundances of Cl, Br, Zn, and Ge with comparable SO₃ to the Irvine basalts. Nanophase ferric oxide (np ox) and volcanic glass were detected in the Barnhill class rocks by Mössbauer and Mini-TES, respectively, and imply greater alteration and cooling rates in the Barnhill than in the Irvine class rocks. The high volatile elements in the Barnhill class agree with volcanic textures that imply interaction with a briny groundwater during eruption and (or) by later alteration. Differences in composition between the Barnhill and Irvine classes allow the fingerprinting of a Na-Mg-Zn-Ge-Cl-Br (\pm Fe \pm Ca \pm CO₂) brine with low S. Nearby sulfate salt soils of fumarolic origin may reflect fractionation of an acidic S-rich vapor during boiling of a hydrothermal brine at depth. Persistent groundwater was likely present during and after the formation of Home Plate.

Citation: Schmidt, M. E., et al. (2008), Hydrothermal origin of halogens at Home Plate, Gusev Crater, *J. Geophys. Res.*, 113, E06S12, doi:10.1029/2007JE003027.

1. Introduction

[2] Since 2004, the twin Mars Exploration Rovers have sent back invaluable data that point toward the presence of past surface water along geologic transects on opposite sides of the planet. Until the investigation of the Inner Basin of the Columbia Hills began in late 2005, evidence for water found by the Spirit rover in Gusev Crater had been relatively minor compared to the laminated, jarosite and hematite-bearing sedimentary rocks found by the Opportunity rover in Meridiani Planum [Squyres *et al.*, 2004b]. Spirit was initially sent to Gusev Crater because the long canyon Ma'adim Vallis enters the crater from the south and

suggests that it was once inundated by a flood or lake [Cabrol *et al.*, 2003; Golombek *et al.*, 2003]. The rocks first examined by Spirit on the Gusev Plains were basalts [Squyres *et al.*, 2004a] with evidence for aqueous processes limited to partially filled vugs and veins and weathering rinds formed by low pH fluids at low water: rock ratios [Haskin *et al.*, 2005; Hurowitz *et al.*, 2006a].

[3] Spirit began to encounter older, pervasively to moderately altered, goethite-bearing clastic rocks that were affected by water and acid volatiles once it reached the Columbia Hills [Ming *et al.*, 2006; Morris *et al.*, 2006; Squyres *et al.*, 2006]. Evidence of water became even more compelling after Spirit descended into the Inner Basin of the Columbia Hills and volcanic rocks and soils began to hint at fossil hydrothermal system. In particular, Spirit came across hydrated sulfate salt Paso Robles class soils of likely fumarolic origin [Yen *et al.*, 2008] and recently discovered amorphous silica deposits that are either sinter or severely acid bleached hydrothermal deposits [Squyres *et al.*, 2008; D.W. Ming *et al.*, Geochemical properties of rocks and soils in Gusev Crater, Mars: Cumberland Ridge to Home Plate, manuscript in preparation, 2008].

[4] Home Plate, the most conspicuous geologic feature so far investigated in the Inner Basin has yielded strong evidence for past near-surface water. Home Plate is an 80 m diameter light-toned outcrop platform of laminated,

¹Department of Mineral Sciences, National Museum of Natural History, Smithsonian Institution, Washington, D. C., USA.

²School of Earth and Space Exploration, Arizona State University, Tempe, Arizona, USA.

³Space Science Institute, Boulder, Colorado, USA.

⁴U.S. Geological Survey, Flagstaff, Arizona, USA.

⁵Guelph-Waterloo Physics Institute, University of Guelph, Guelph, Ontario, Canada.

⁶NASA Johnson Space Center, Houston, Texas, USA.

⁷NASA Ames Research Center, Moffett Field, California, USA.

⁸Division of Geological and Planetary Sciences, California Institute of Technology, Pasadena, California, USA.

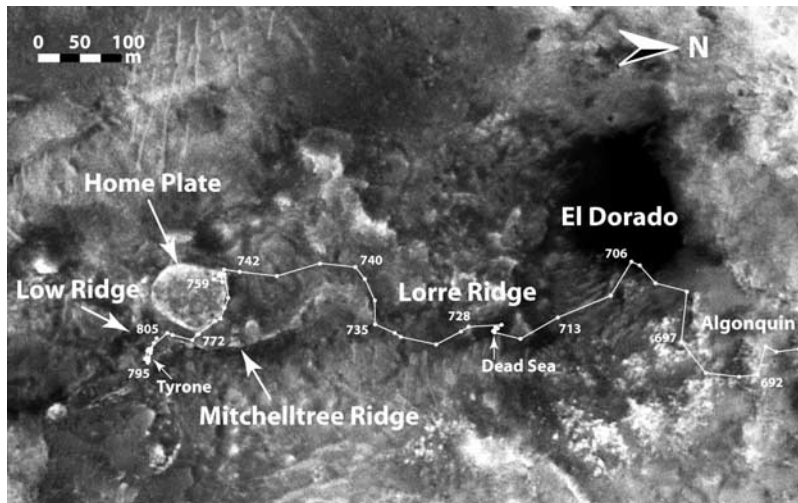


Figure 1. MOC image of the Inner Basin of the Columbia Hills with Spirit's traverse until sol (Martian day) 805 when Spirit reached its winter haven site on a north facing slope. Sol numbers are indicated.

massive, to cross-bedded strata, thought to be pyroclastic and likely hydromagmatic in origin [Squyres *et al.*, 2007]. The Barnhill class rocks that comprise Home Plate are compositionally nearly homogenous and similar to nearby Irvine class vesicular alkali-rich basalts. Concentrations of volatile elements that have strong affinity for aqueous solutions, including the halogens Cl and Br and siderophile metals Ge and Zn, are higher at Home Plate than nearby basalts.

[5] In this paper, we present the observations made by the Athena Payload [Squyres *et al.*, 2003] at the northwest corner of Home Plate and nearby basaltic rocks. The payload includes the Panoramic camera (Pancam) [Bell *et al.*, 2003], three engineering cameras [Squyres *et al.*, 2003], and the Miniature Thermal Emission Spectrometer (MiniTES) [Christensen *et al.*, 2003]. Instruments on the rover's arm, or instrument deployment device (IDD) include the Alpha Particle X-ray Spectrometer (APXS) [Rieder *et al.*, 2003], which analyzes major and some minor element concentrations in rocks and soils; the Mössbauer Spectrometer [Klingelhöfer *et al.*, 2003], which analyzes for Fe-bearing mineralogy; the Microscopic Imager camera (MI) [Herkenhoff *et al.*, 2003]; and the Rock Abrasion Tool (RAT) [Gorevan *et al.*, 2003], which brushes dust off of rock surfaces. We then infer the composition and character

of a Cl-rich hydrothermal brine and suggest that it was incorporated during fragmentation and (or) later alteration.

2. Geologic Traverse

[6] Spirit has analyzed dozens of diverse rocks and soils in Gusev Crater and the vicinity of Home Plate is particularly diverse and includes ultramafic and silica-rich deposits (R.E. Arvidson *et al.*, Spirit Mars rover mission to the Columbia Hills, Gusev Crater: Mission overview and selected results from the Cumberland Ridge to Home Plate, submitted to *Journal of Geophysical Research*, 2008). More commonly, however, Spirit has encountered basalts along its traverse. These basalts vary in texture, degree of alteration, and in alkali element concentrations [Squyres *et al.*, 2006; McSween *et al.*, 2004, 2006a, 2006b]. This paper focuses on the two main basaltic units in the Inner Basin: the Home Plate layered tephra deposits and vesicular basalts that cap surrounding ridges and make up a lag deposit on top of Home Plate.

[7] Images of Home Plate from orbit by the Mars Orbital Camera (MOC) and later by High Resolution Imaging Experiment (HiRISE) (Figure 1) revealed a light-toned subcircular structure. After entering the Inner Basin, Spirit drove south along the Lorre Ridge, which consists of

Figure 2. False color Pancam (L257) images of rock targets discussed in text. (a) The Dead_Sea site, where Arad_Samra, a white powdery soil, was unearthed by the rover's wheel, and Masada, a vesicular basalt next to Arad, was examined. An arrow indicates Masada. The field of view is approximately 80 cm. (b) Image of Barnhill, where Barnhill_Ace (massive upper section) and Barnhill_Fastball (coarse-grained layered section) were examined by IDD. Note arrow pointing to bomb sag, where layers were bent by the impact of the 3 cm projectile. (c) The Gibson Panorama mosaic of the 1–2 m tall northwest face of Home Plate that was imaged while Spirit analyzed the Barnhill targets. The rover took these images while at a 27° tilt, causing the apparent “U” shape of the mosaic. This section contains two main units, the lower, coarser-grained unit, which includes Barnhill at the lower part of section and an upper, laminated, cross-bedded unit. (d) The rock target Posey_Manager that was brushed by the RAT (dark blue circle; 4.5 cm diameter) and analyzed by the IDD. Posey is a float rock next to Barnhill that presumably fell from the upper, cross-bedded unit of Home Plate. (e) The rock target CoolPapaBell from the top surface of Home Plate. The target was analyzed at two brushed spots (4.5 cm diameter), CoolPapaBell_Crawford and CoolPapaBell_Stars.

basaltic scoria. Spirit approached Home Plate on sol 744, climbing on top of the northwest edge (Figure 1) before descending the structure and traversing clockwise to the east and southeast. The rover reached a north facing slope on Low Ridge on sol 805 where it rode out the Martian winter in order to remain energy positive. Once the solar energy became favorable again in the spring (sol 1055), Spirit examined a nearby vesicular basalt.

2.1. Vesicular Basalts of the Inner Basin

[8] Wind abraded vesicular basalt rocks, ranging from 20 cm to 1 m in diameter comprise a capping unit on surrounding ridges and a lag deposit on top of Home Plate (Figure 1). These basalts belong to the Irvine class, a group that is rich in alkali elements and contains pyroxene and magnetite (see later sections). Rubble piles of Irvine class basalts in the Inner Basin are geographically and compositionally restricted.

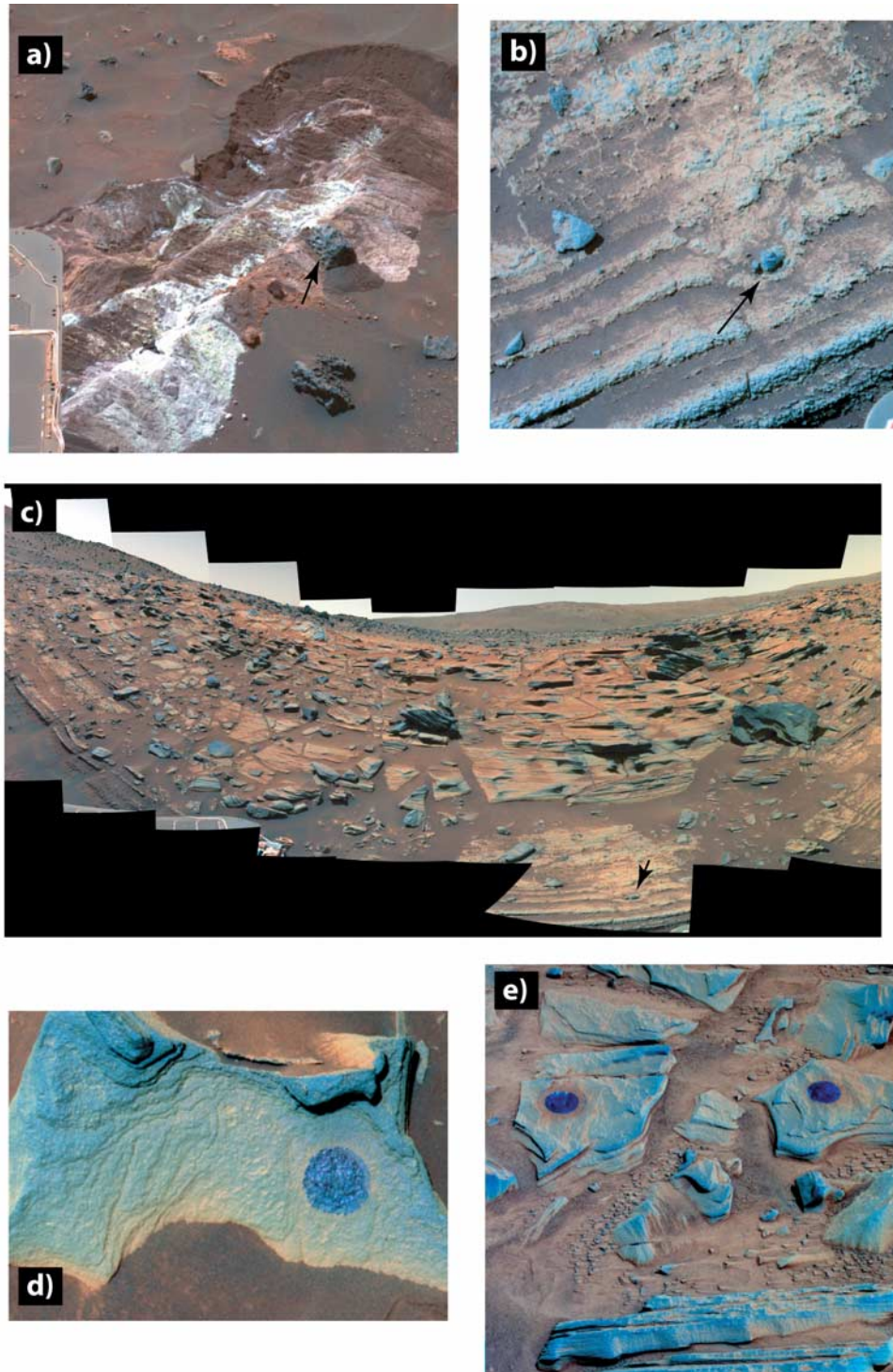


Figure 2

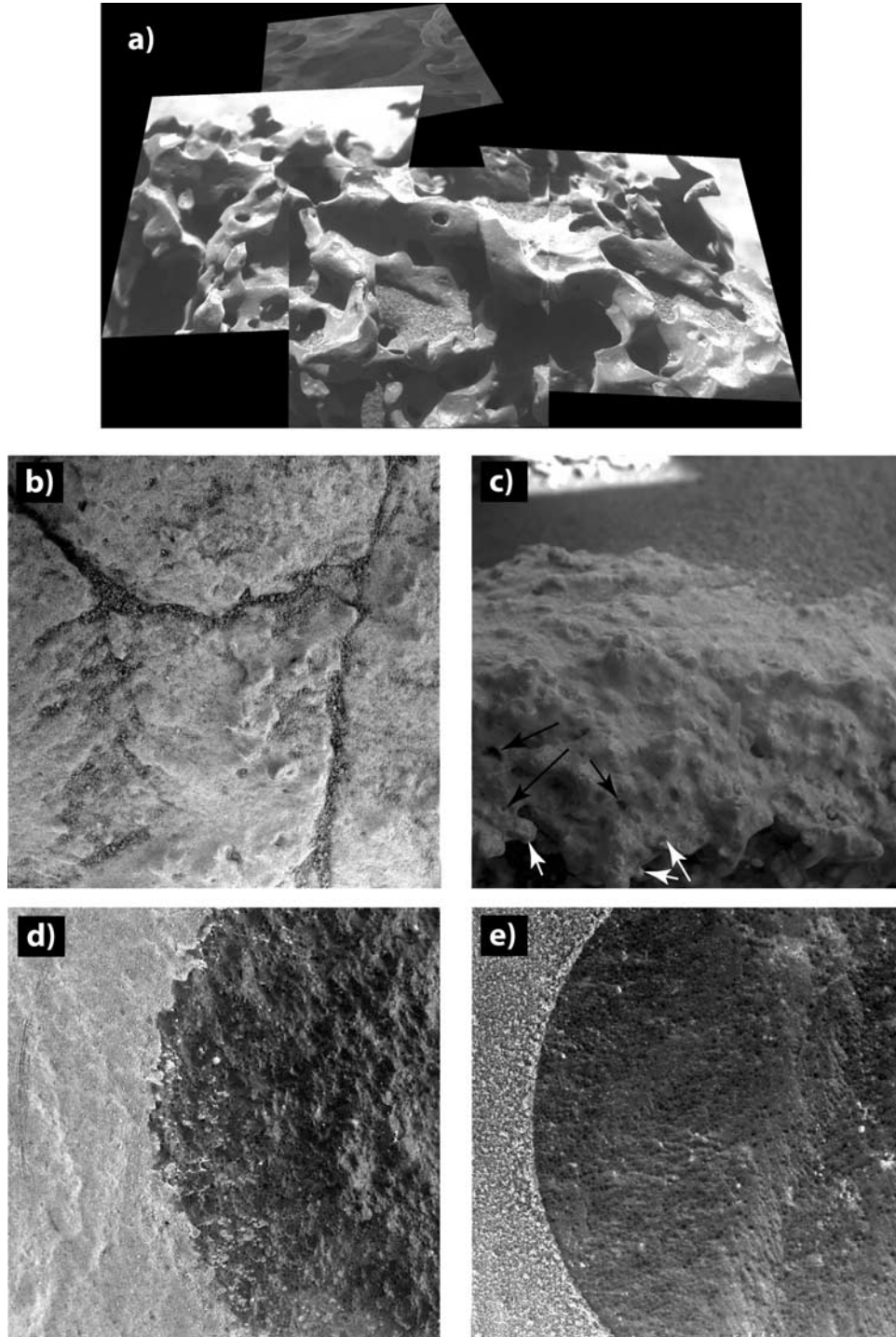


Figure 3. Microscopic Imager (MI) images of rock targets discussed in text. (a) Mosaic of the wind abraded vesicular basalt GongGong of the Irvine class. (b) The unbrushed rock target Barnhill_Ace that was examined by the IDD. Distorted square images in the mosaic are 31 mm. (c) The lower, layered target Barnhill_Fastball that is a geochemical outlier in major elements. Note round clasts (white arrows) that may be accretionary lapilli and holes (black arrows) that may be vesicles. (d) Posey_Manager brushed target. Round to irregular 0.08 to 0.6 mm dark grains supported by a lighter-toned matrix are visible in the brushed portion. (e) The CoolPapaBell_Crawford target whose flat surface was well brushed, revealing small (ranging from 0.2 to 0.9 mm) and more uniformly rounded grains than in the Posey target. Square images are 31 mm across. Square images (Figures 3b–3e) are 31 mm across.

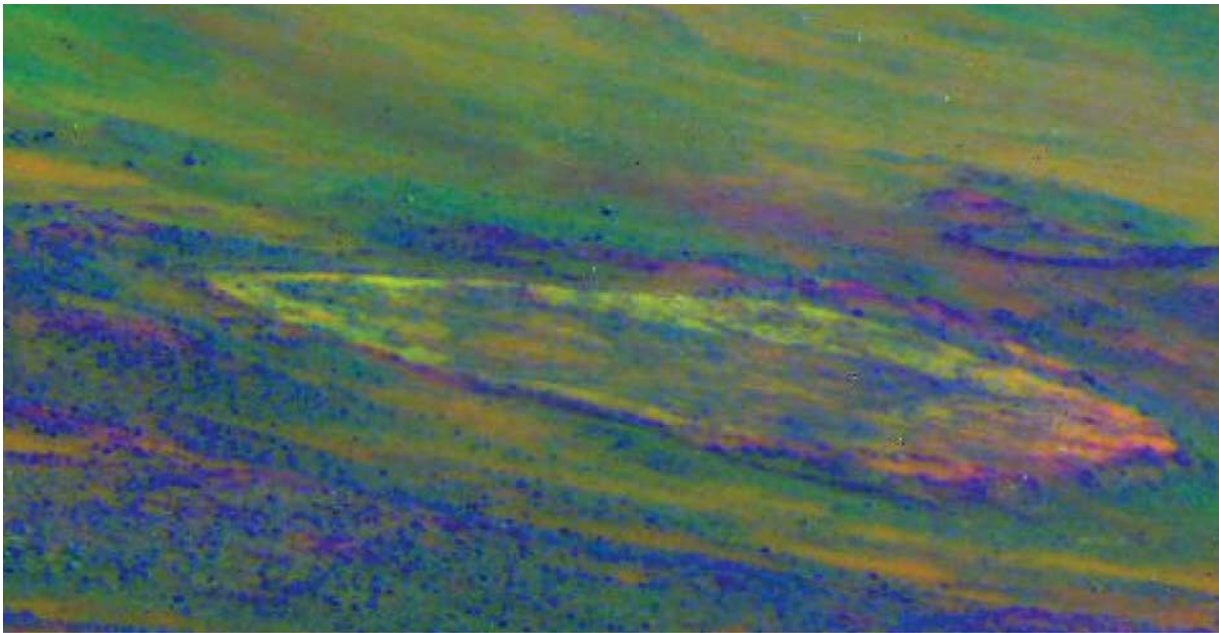


Figure 4. Pancam false-color representation of Home Plate acquired near the summit of Husband Hill on sol 595 (Pancam sequence P2282) demonstrating color differences around the rim of Home Plate that appear to be related to mineralogical differences [Farrand *et al.*, 2008]. Red indicates 432 to 754 nm spectral slope; green indicates 432 nm reflectance; and blue indicates 754 to 1009 nm spectral slope.

The high degree of vesicularity of these basalts suggests that they are nearly in place and close to their vent [Crumpler *et al.*, 2007]. It is unknown whether these vesicular basalts are broken up, jointed lava flows or pyroclastic scoria accumulations.

[9] Four Irvine class rocks have been examined by the IDD, including the massive Irvine on Husband Hill and the vesicular basalts Masada, GongGong (Figures 2a and 3a) and Esperanza in the Inner Basin (Figure 1). The RAT did not brush any Irvine class targets, but each analyzed spot was selected for minimal dust coverage and soil contamination. Microscopic images of wind-polished surfaces of Irvine reveal ~ 1 –5% light toned rectangular phenocrysts (likely plagioclase [McSween *et al.*, 2006b]) within a dark groundmass.

2.2. Home Plate

[10] From near the summit of Husband Hill, Home Plate was observed to have color differences around its rim from west to east (Figure 4) [Farrand *et al.*, 2008], a finding corroborated by later HiRISE orbital imaging. On closer examination, Home Plate was found to be a ~ 1 to 2 m tall, ~ 80 m diameter light-toned, subcircular platform of finely laminated, massive, and cross-bedded dark-toned strata covered by lighter-toned dust [Squyres *et al.*, 2007]. First approached at the northwest scarp, Spirit examined a ~ 2 m tall section of Barnhill outcrop that comprises two units: a lower, laminated, coarser-grained unit and an upper finer-grained cross-bedded unit (Figures 2b and 2c).

[11] The lower unit of Home Plate is ~ 40 cm thick and laminated with apparent coarse grains at its base and a single massive ~ 30 cm thick layer near the top. Texturally, the lower unit ranges from massive to knobby with sub-round protrusions (up to 2 mm) that are potential accretion-

ary lapilli. Layers are 1–2 cm thick alternate between coarse and fine grained (Figures 2b and 2c), suggesting pulses in activity during deposition. The most conspicuous feature of the lower unit at Barnhill is an apparent bomb sag (Figure 2b), where layers deformed from the impact of a ~ 3 cm clast. Small round holes (0.3 to 1.3 mm) within the clastic rock may be vesicles caused by excess vapor during deposition. Because cohesion of the underlying material is required for deformation to occur, bomb sags and vesicles occur in wet phreatovolcanic deposits on Earth [Fisher and Schmincke, 1984]. Spirit was not able to examine the lowermost portion of the lower unit at the Barnhill outcrop because it was not reachable by the IDD but did analyze 2 targets in the upper part of the lower unit, including centimeter thick layers and the massive layer (Figures 2b, 2c, 3b, and 3c). The RAT did not brush either Barnhill target. Posey is assumed to have fallen from between the Barnhill and CoolPapaBell rock targets.

[12] The upper unit of Home Plate consists of laminated, low- to high-angle (up to 30°) cross-bedded layers that dip 0 – 35° toward the center of the structure [Squyres *et al.*, 2007; K.W. Lewis *et al.*, Structure and stratigraphy of Home Plate from the Spirit Mars Exploration Rover, submitted to *Journal of Geophysical Research*, 2008]. Spirit examined two rocks from the upper unit: the float rock Posey (Figures 2d and 3d) and CoolPapaBell (Figures 2e and 3e) at the top of Home Plate. Posey was chosen for IDD analysis because its laminated, fine-grained texture is similar to the upper unit it is interpreted to have fallen from the upper northwest scarp. The RAT brush removed nearly all of the dust coatings on Posey and CoolPapaBell (Figures 3c and 3d). MI images of the upper unit revealed round to irregular <1 mm dark grains that are supported by a

Table 1. Elemental Compositions of North Home Plate and Nearby Basalts^a

	Irvine	Masada	Esperanza	Barnhill_Ace	Barnhill_Fastball	Posey_Manager	CoolPapa_Bell Stars	CoolPapa_Bell_Crawford
Location	Husband Hill	Dead_Sea	Low Ridge	Lower unit North Home Plate	Lower unit North Home Plate	Upper unit North Home Plate	Top of North Home Plate	Top of North Home Plate
Class Type	Irvine Unbrushed rock	Irvine Unbrushed vesicular rock	Irvine Unbrushed vesicular rock	Barnhill Unbrushed rock	Barnhill Unbrushed rock	Barnhill Brushed rock	Barnhill Brushed rock	Barnhill Brushed rock
Sol	600	726	1055	749	750	754	763	764
SiO ₂	47.0 (0.34)	46.5 (0.6)	47.9 (0.5)	45.2 (0.3)	45.3 (0.3)	45.4 (0.4)	46.0 (0.3)	46.6 (0.4)
TiO ₂	1.06 (0.06)	0.74 (0.10)	1.05 (0.08)	0.74 (0.06)	0.67 (0.06)	1.01 (0.06)	0.93 (0.06)	1.11 (0.07)
Al ₂ O ₃	8.29 (0.09)	9.52 (0.21)	8.40 (0.13)	8.91 (0.08)	7.85 (0.08)	9.31 (0.10)	9.30 (0.09)	9.98 (0.12)
FeO*	19.2 (0.08)	17.2 (0.16)	20.2 (0.15)	17.7 (0.06)	17.8 (0.07)	15.4 (0.09)	15.4 (0.09)	15.4 (0.09)
MnO	0.36 (0.01)	0.36 (0.03)	0.38 (0.01)	0.39 (0.01)	0.47 (0.01)	0.32 (0.01)	0.31 (0.01)	0.29 (0.01)
MgO	10.63 (0.12)	9.00 (0.24)	8.45 (0.13)	9.19 (0.09)	11.99 (0.11)	9.48 (0.10)	9.59 (0.09)	10.26 (0.12)
CaO	6.03 (0.04)	6.05 (0.11)	5.57 (0.06)	6.07 (0.04)	5.80 (0.04)	6.65 (0.04)	6.50 (0.04)	6.74 (0.05)
Na ₂ O	2.68 (0.26)	3.10 (0.42)	3.40 (0.25)	3.10 (0.17)	2.35 (0.17)	3.50 (3.25)	3.25 (0.18)	3.36 (0.21)
K ₂ O	0.68 (0.06)	0.53 (0.08)	0.52 (0.06)	0.32 (0.05)	0.23 (0.05)	0.42 (0.06)	0.21 (0.05)	0.32 (0.06)
P ₂ O ₅	0.97 (0.07)	0.90 (0.11)	0.91 (0.8)	0.87 (0.07)	0.79 (0.07)	1.37 (0.07)	1.12 (0.07)	1.27 (0.08)
Cr ₂ O ₃	0.20 (0.03)	0.35 (0.06)	0.20 (0.03)	0.45 (0.03)	0.49 (0.03)	0.32 (0.03)	0.39 (0.03)	0.34 (0.03)
SO ₃	2.37 (0.03)	5.00 (0.16)	2.36 (0.06)	5.67 (0.06)	4.63 (0.06)	4.81 (0.06)	3.75 (0.05)	2.91 (0.05)
Cl	0.45 (0.01)	0.57 (0.04)	0.47 (0.02)	1.31 (0.02)	1.57 (0.02)	1.94 (0.02)	1.74 (0.02)	1.35 (0.02)
Ni (ppm)	289 (37)	459 (100)	395 (54)	317 (35)	352 (0.39)	379 (35)	318 (37)	297 (40)
Zn (ppm)	230 (11)	317 (48)	368 (22)	400 (11)	415 (14)	407 (11)	422 (13)	314 (14)
Ge (ppm)	14 (6)	–	19 (12)	68 (6)	71 (8)	34 (5)	27 (7)	16 (8)
Br (ppm)	6 (13)	64 (27)	181 (23)	475 (17)	370 (18)	181 (15)	203 (16)	91 (15)

^aCompositions are presented as wt %, unless noted otherwise. Values in parentheses are 2σ errors. FeO* concentrations are total Fe as FeO. The valence state of S is unknown and is reported here as SO₃.

lighter-toned matrix (Figures 3c and 3d). The high degree of rounding of clasts and cross bedding in the upper unit suggests that the deposit may have been reworked by eolian processes [Squyres *et al.*, 2007; Lewis *et al.*, submitted manuscript, 2008].

2.3. Other Rocks and Soils

[13] For comparison, this paper also references other classes of rocks and soils that were examined by Spirit earlier in the mission. The Adirondack class basalts make up the plains surrounding the Columbia Hills [e.g., Squyres *et al.*, 2004a; McSween *et al.*, 2006a] and have been observed as float rocks throughout the Columbia Hills [Ruff *et al.*, 2006]. The highly altered, Cl-rich, clastic Clovis class was discovered at West Spur, a low hill west of Husband Hill [Gellert *et al.*, 2006; Ming *et al.*, 2006; Squyres *et al.*, 2006]. The Wishstone and Watchtower classes of Husband Hill are high Ti and P clastic rocks [e.g., Squyres *et al.*, 2006; Hurowitz *et al.*, 2006b; Ming *et al.*, manuscript in preparation, 2008]. The Algonquin class is a compositionally and texturally diverse group of olivine-rich clastic rounded boulders and outcrops that were found on the southeastern rib of Husband Hill known as Haskin Ridge [Mittlefehldt *et al.*, 2006; Ming *et al.*, manuscript in preparation, 2008].

[14] An important group of soils are the white to yellow Paso Robles sulfate soils (Figure 2a). These soils include Paso Robles found on the northwest flank of Husband Hill [Ming *et al.*, 2006; Yen *et al.*, 2008], and at Dead_Sea (Arad target, Figures 1 and 2a) and Tyrone [Yen *et al.*, 2008; Johnson *et al.*, 2007; A. Wang *et al.*, Distribution and origin of light-toned salty soils discovered by the Mars Exploration rover Spirit in Gusev Crater, manuscript in preparation, 2008] in the Inner Basin. At each of these locations, the

rover's wheel unearthed white to light yellow friable material beneath a surface layer of reddish brown soil. The distribution of these soils is unknown and may be extensive in the low areas of the Inner Basin.

3. Compositional and Mineralogical Characteristics

[15] The classification of the diverse rocks found in Gusev Crater is based on chemical compositions acquired

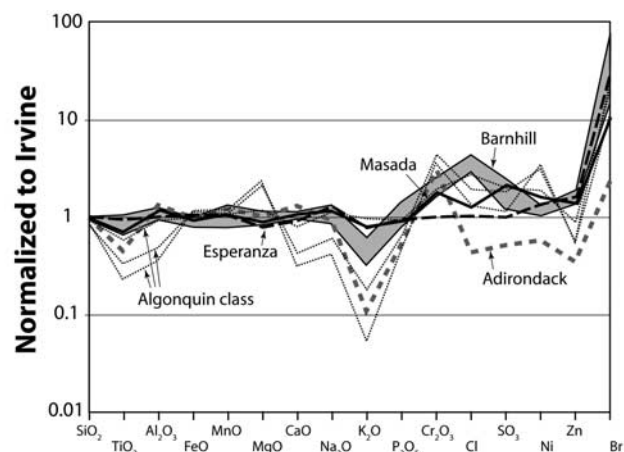


Figure 5. Element abundance diagram normalized to the rock Irvine for the Barnhill class and the rock targets Adirondack, Masada, Esperanza, and the brushed analyses for the Algonquin class rocks Seminole, Algonquin, and Comanche. Later discussions make use of Masada as a reference because it is most like the Barnhill class targets in nonmobile elements.

by APXS analysis. Classes are typically named for the first rock examined of that group [Squyres *et al.*, 2006; Ming *et al.*, manuscript in preparation, 2008]. The Barnhill and Irvine rocks are similar in major elements; both classes vary from 45 to 47 wt % SiO₂ and encompass narrow ranges in composition (Table 1 and Figures 5 and 6), suggesting derivation from a similar source. There are differences in volatile and minor elements between the Irvine and Barnhill rocks that warrant their classification into separate groups. Differences in texture and mineralogy also exist between the Irvine and Barnhill groups that attest to different emplacement, cooling, and alteration histories. We here summarize APXS, Mössbauer, and Mini-TES results for these rock classes and Pancam multispectral data for the Barnhill class.

3.1. Irvine Basalts

3.1.1. APXS Results

[16] The Irvine class represents a distinct unaltered basaltic magma type in the Columbia Hills. Relative to most terrestrial basalts, such as mid-ocean ridge basalts, Irvine basalts are rich in FeO* (15–20 wt %) and generally poor in Al₂O₃ (8–10 wt %). Irvine basalts have similar SiO₂ and MgO concentrations to the Adirondack basalts of the Gusev Plains [Squyres *et al.*, 2006; Gellert *et al.*, 2006] but range to higher concentrations of alkali elements than Adirondack class basalts (e.g., 2.7–3.8 versus 2.4–2.8 wt % Na₂O). Irvine basalts also have higher concentrations of some minor and trace elements than Adirondack basalts, including TiO₂, P₂O₅, Ni, and Zn.

[17] Compositional differences among the few Irvine basalts that were examined by APXS (Irvine, Masada, and Esperanza) can be accounted for by soil contamination and minor removal of Fe-bearing phases identified by Mössbauer. Among the Irvine class, analytical errors are greatest for the target Masada because tight time constraints limited the APXS observation of Masada to 30 min (Table 1). Masada has higher SO₃, Cr₂O₃, and Ni than Irvine (Table 1) suggesting some soil contamination, possibly trapped within its vesicles. Masada also has lower FeO* and TiO₂ concentrations (Figure 5 and Table 1) than the rock Irvine and this may have been caused by minor fractional crystallization of Timagnetite, a mineral commonly identified by Mössbauer in these rocks. Esperanza is distinct from other Irvine basalts by its higher SiO₂ and lower MgO (Table 1 and Figure 6a) than either Irvine or Masada and its composition is consistent with loss of 5–10% olivine by fractional crystallization or dissolution by chemical weathering. Esperanza also has significantly higher Br (181 ppm) than other Irvine basalts (Figures 6 and 7).

3.1.2. Mössbauer Spectrometer Results

[18] Irvine class basalts analyzed by Mössbauer spectrometer include Irvine, Esperanza, and GongGong (Table 2) (R.V. Morris *et al.*, Iron mineralogy and aqueous alteration from Husband Hill through Home Plate at Gusev Crater, Mars: Results from the Moessbauer instrument on the Spirit Mars Exploration Rover, submitted to *Journal of Geophysical Research*, 2008). The examination of Esperanza was a shortened 25-h integration. Although no APXS analysis was performed on the vesicular GongGong (Figure 3a), it is classified here as a member of the Irvine class because of its proximity to Masada and has Fe mineralogy is like that of Irvine. A significant amount of the Fe in Irvine basalts is held in magnetite and pyroxene (36–54% and 33–46%, respectively). Only 4–9% of the Fe in the Irvine class is in olivine and less than 10% of the Fe is contained in nanophase oxide and hematite.

3.1.3. Mini-TES Results

[19] Thermal infrared spectra from Mini-TES (~5–25 μm, ~2000–400 cm⁻¹) serve to establish the distribution and bulk mineralogy of the rocks and soils encountered along the rover's traverse. A transition from the olivine-dominant Algonquin class rocks of the lower Haskin Ridge to pyroxene-dominant Irvine class rocks was first observed on sol 723 at the north end of Lorre Ridge (Figure 1). The spectral characteristics of a vesicular float rock dubbed Ein Gedix clearly depart from the clastic Algonquin class rocks and strongly resemble those of the average Irvine class rocks first identified with Mini-TES on top of Husband Hill (Figure 8). A second example of Irvine-like spectral character was encountered some 200 m further south on sol 736 in a more massive rock dubbed Luo Zu (Figure 8) that is similar to texture to original Irvine target. These two rocks thus demonstrate that Irvine class rocks have similar mineralogy despite significant variations in texture.

[20] A total of 46 rocks with Irvine class spectral character have been encountered (Figure 9a), mostly along the eastern edge of Home Plate and Low Ridge to the south. Of these, only Esperanza has a full complement of measurements from all the Athena instruments. Masada and GongGong were not observed because they were well below the size of the Mini-TES field of view. Deconvolution of the Esperanza spectrum into constituent phases provides a much better fit (Figure 9b) than that obtained from the original Irvine class rocks [McSween *et al.*, 2006b] probably due to more favorable measurement conditions. Pyroxene is the dominant component at ~35% abundance with pigeonite at ~25% of the total (Table 3). A sulfate component approaching 20% abundance is required to achieve a good fit, similar to most of the rocks measured by Mini-TES

Figure 6. SiO₂ variation diagrams for main rock types discussed in text. Symbols correspond to target type as RAT abraded (R, black box), brushed (B, colored box), or unbrushed (U, no box). The outlier Barnhill_Fastball is indicated. The Irvine class rocks Irvine (Irv), Masada (Mas), and Esperanza are indicated to show variation among the unaltered basalt near equivalent to the Barnhill class. Fields enclose undisturbed Gusev soil analyses until sol 805 [Gellert *et al.*, 2004, 2006]. (a) MgO versus SiO₂ and (b) Al₂O₃ versus SiO₂ plots indicate linear variations among the Barnhill targets of increasing SiO₂, MgO, and Al₂O₃ that corresponds with stratigraphic height. Among the alkalis, Barnhill targets have similar N₂O to Irvine basalts as shown for (c) Na₂O versus SiO₂, but lower K₂O as shown for (d) K₂O versus SiO₂. (e) Plot of Cl versus SiO₂ demonstrates the high Cl in the Barnhill class relative to unaltered basalts and undisturbed soils.

throughout the Columbia Hills [Ruff *et al.*, 2006]. The significant proportion of sulfate is unsubstantiated by APXS and MB data sets and likely represents a surface coating on the unbrushed surface. A basaltic glass phase of ~15% and

plagioclase and olivine at ~10% each are required for a good fit. Among the 13 secondary silicate phases included in the deconvolution end-member set, ~10% saponite improved the fit and is an indication of minor alteration perhaps consistent with a coating.

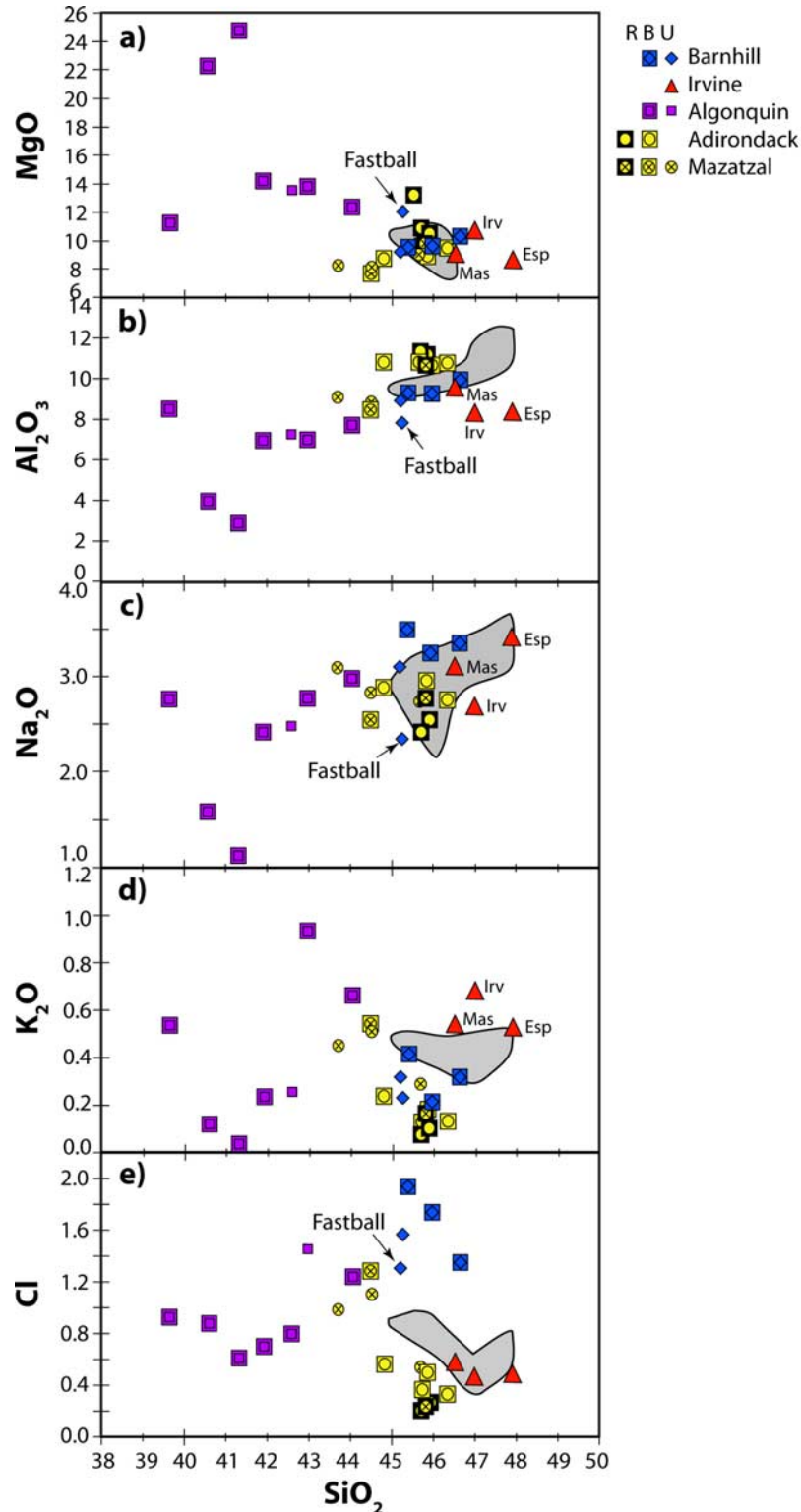


Figure 6

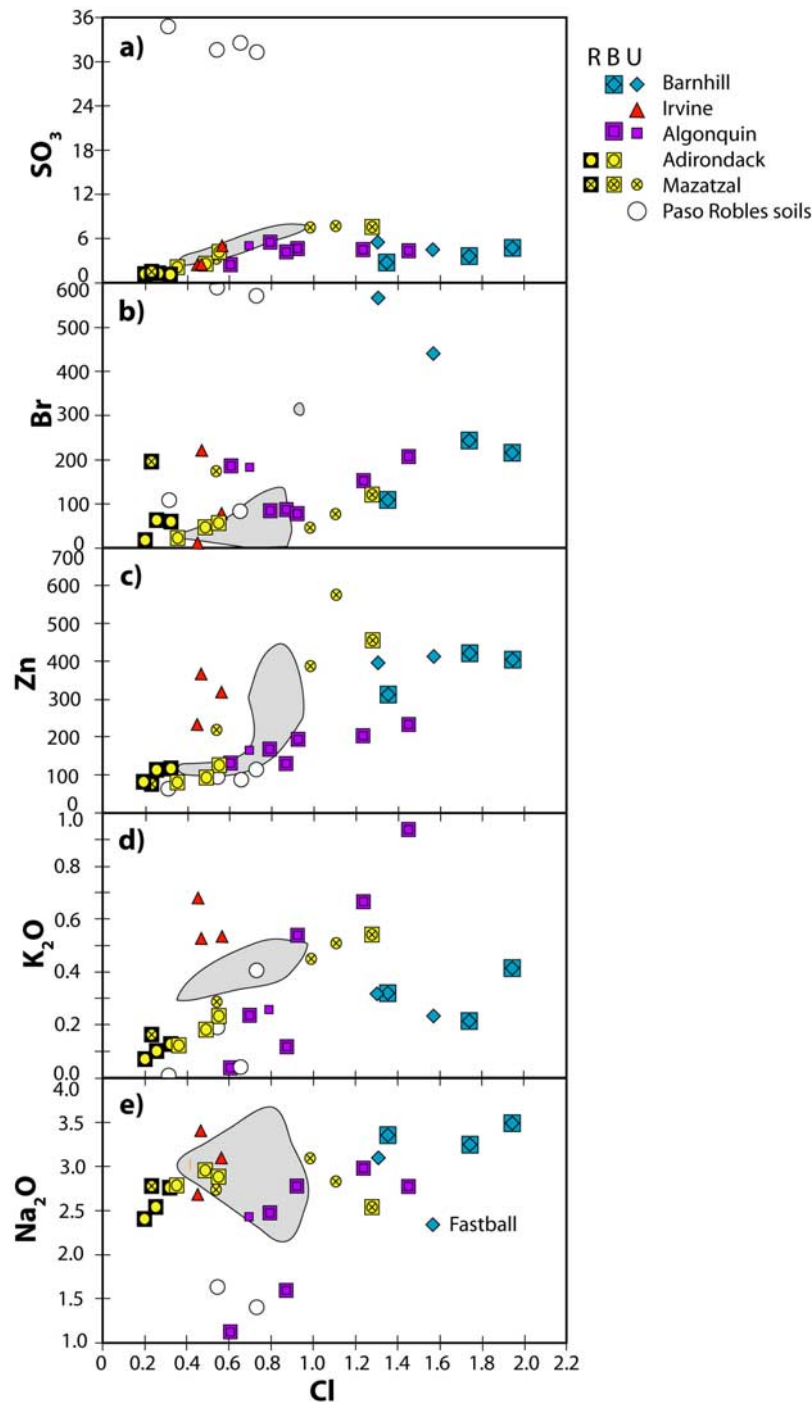


Figure 7. Cl variation diagrams for main rock types and they Paso Roble sulfate-rich soils. (a) SO_3 versus Cl reveals the high Cl character of the Barnhill class with comparable SO_3 to the relatively unaltered Irvine basalts, (b) Br versus Cl, (c) Zn versus Cl, (d) K_2O versus Cl, and (e) Na_2O versus Cl. Symbols correspond to target type as RAT abraded (R, black box), brushed (B, colored box), or unbrushed (U, no box). Fields enclose undisturbed soil analyses from Gusev Crater until sol 805 [Gellert *et al.*, 2004, 2006].

3.2. Barnhill Class of Home Plate

3.2.1. APXS Results: Major Elements

[21] Although Barnhill class rocks have higher concentrations of some volatile elements, they are basaltic and rich in Na_2O like Irvine class rocks (Figures 5, 6e, and 7). In an

Irvine-normalized element abundance diagram (Figure 5), concentrations of most nonvolatile elements (SiO_2 , Al_2O_3 , CaO , FeO^* , TiO_2) center at or near 1, excepting K_2O and Cr_2O_3 . An outlier among the Barnhill class is the stratigraphically lowest target Barnhill_Fastball, which has lower

Table 2. Mössbauer Areas for Component Subspectra, $\text{Fe}^{3+}/\text{Fe}_{\text{Total}}$, and Temperature Measurement Interval^a

	Irvine	GongGong	Esperanza	Barnhill_Ace	Posey_Manager	CoolPapaBell_Stars
Class	Irvine	Irvine	Irvine	Barnhill	Barnhill	Barnhill
Sol	602	737	1056	748	754	762
Ol %	9	6	4	18	17	17
Px %	46	33	45	22	23	23
npOx %	6	5	4	29	27	29
Mt %	36	54	45	24	31	28
Hm %	3	2	1	7	3	3
Sum %	100	100	100	100	100	100
$\text{Fe}^{3+}/\text{Fe}_{\text{Total}}$	0.35	0.45	0.40	0.53	0.53	0.52

^aSulfate, ilmenite, chromite, and garnet were not detected in the Mössbauer spectra for any of these rocks. A more complete summary of these data are presented by Morris et al. (submitted manuscript, 2008). Uncertainty in component subspectra area is $\pm 2\%$ absolute. Uncertainty in $\text{Fe}^{3+}/\text{Fe}_{\text{T}}$ is ± 0.03 .

Na_2O and Al_2O_3 and higher MgO and FeO^* (Figure 6). In spite of the small compositional range, systematic variations exist within the Barnhill class that correlate with stratigraphy. Within the < 2 m distance from Barnhill_Fastball to CoolPapaBell, SiO_2 , Al_2O_3 , CaO , and TiO_2 increase and FeO^* , Cr_2O_3 , and MnO form near-linear trends and decrease up section (Figures 6a and 6b). Excluding Fastball, the MgO also increases up section. These major elements are not easily affected by chemical weathering [Huirowitz et al., 2006a] and probably reflect a primary process, such as igneous fractional crystallization or mixing, perhaps analogous to ash flow tuffs erupted from a zoned magma chamber on Earth [Hildreth, 1981].

3.2.2. APXS Results: Volatile Elements

[22] Barnhill class layered rocks have higher concentrations of halogen (Cl and Br) and volatile siderophile (Ge and Zn) elements than Irvine class rocks (Table 1 and Figures 5 to 7) or any other unaltered basalts in Gusev Crater. Concentrations of Cl in the Barnhill class are 3–4 times greater than in Irvine (Table 1). The volatile metal germanium has only been detected in four distinct rock groups on Mars by the Spirit and Opportunity rovers, but Ge concentrations range from 16 to 71 ppm in the Barnhill class. Concentrations of Br are most variable among the Barnhill class and of the unbrushed targets, Br concentrations are among the highest so far observed in Gusev Crater. Variable concentrations of SO_3 (2.9 to 5.7 wt % SO_3 ; Table 1) in the Barnhill class are comparable to the Irvine class and other unaltered basalts in Gusev Crater (Figure 7a). The S-rich environment at the surface of Mars makes it likely that surface soil and (or) dust contamination caused the variable S in the Barnhill class.

[23] There are no apparent correlations between the Cl, Br, or Zn and other mobile elements, such as SO_3 , K_2O or Na_2O (Figure 7). There are also no apparent stratigraphic correlations in Zn, Ge, Cl, Br or alkali elements like those observed in major elements (Figure 6e), indicating that the process responsible for the stratigraphic variations in non-volatile elements is independent of volatile element enrichment at Home Plate.

3.2.3. Mössbauer Spectrometer Results

[24] In comparison to the Irvine class, the Barnhill class contains greater proportions of np ox (26–29%) and olivine (17–18%; Table 2) (Morris et al., submitted manuscript, 2008). Other Fe-bearing minerals include pyroxene, magnetite, and hematite. The larger fraction of Fe^{3+} -bearing phases in the Barnhill class relative to Irvine rocks yields a greater $\text{Fe}^{3+}/\text{Fe}_{\text{total}}$ than Irvine class basalts (0.52–0.53

versus 0.35–0.45) (Morris et al., submitted manuscript, 2008). CIPW norms (Table 4) using the $\text{Fe}^{3+}/\text{Fe}_{\text{total}}$ determinations by Mössbauer indicate that the Barnhill class and two Irvine class rocks, Masada and Esperanza are quartz normative. Modest proportions of olivine in the Barnhill class rocks (Table 2) suggest that they do not contain an equilibrium assemblage.

3.2.4. Visible and Near-Infrared Multispectral Properties

[25] Layered rocks at Home Plate examined during the initial survey displayed two different types of spectra (Figure 10). Undisturbed rocks with surfaces swept clean by the wind as well as the Posey RAT brush spot were characterized by a broad relative reflectance maximum peaking between 750 and 800 nm. These rocks display either reflectance absorption at ~ 950 or a flat to somewhat lower reflectance beyond $1 \mu\text{m}$. The CoolPapaBell (Stars and Crawford) RAT brush spots had a narrower relative reflectance maximum displaced to shorter wavelengths at ~ 675 –750 nm. The absorption feature that is most evident in the Stars and Crawford RAT brush spot spectra and the relative reflectance maximum at ~ 675 –750 nm is consis-

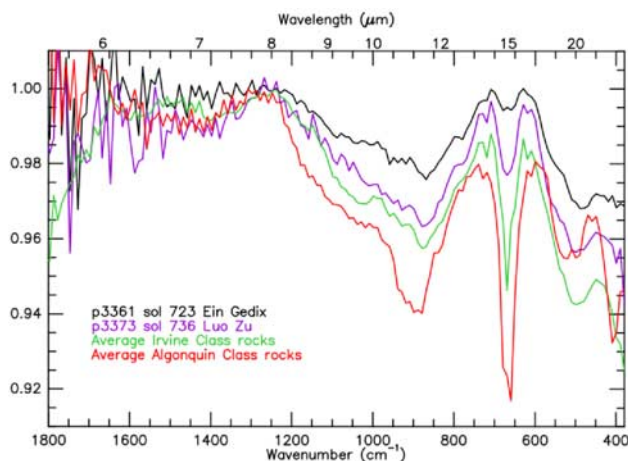


Figure 8. Mini-TES spectra of the first two examples of Irvine class rocks encountered en route to Home Plate. They are notably similar to the original Irvine class rocks found on top of Husband Hill and dissimilar to the Algonquin class rocks of lower Haskin Ridge. Note that the spectra at wave numbers > 1500 and 600 – 800 cm^{-1} are influenced by atmospheric absorption.

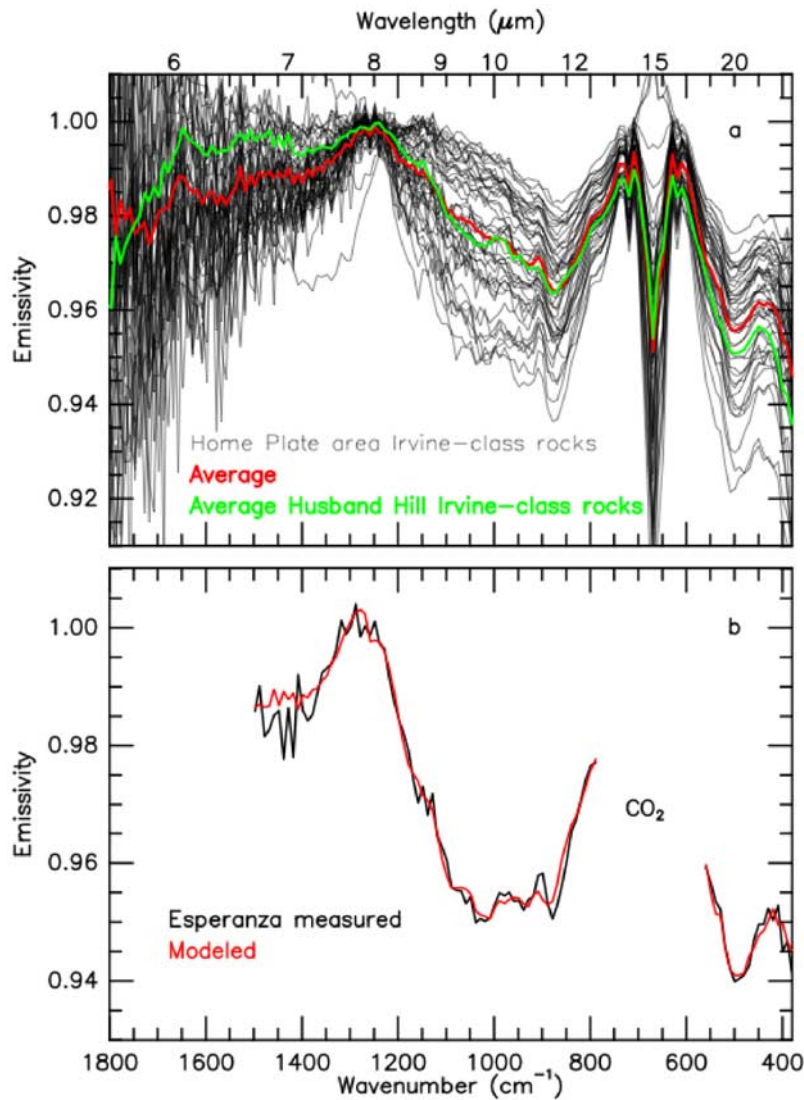


Figure 9. (a) Mini-TES spectra of 46 rocks encountered on or near Home Plate that on average, strongly resemble the original Irvine class rocks found on top of Husband Hill. (b) Esperanza was the subject of a full instrument campaign. Spectral deconvolution provides a good model fit with the component phases shown in Table 3.

tent with the presence of a low-Ca pyroxene. The suppression of reflectance in the 1009 nm band in the Posey spectrum could be caused by a higher fraction of opaque minerals and is supported by Mössbauer spectrometer results (section 3.2.3) (Morris et al., submitted manuscript, 2008), indicating marginally higher amounts of magnetite in Posey than in Stars (Table 2).

3.2.5. Mini-TES Results

[26] The layered rocks of Home Plate are spectrally distinct from the Irvine class rocks and all other rocks encountered previously. They most resemble the glassy rocks found on the West Spur of the Columbia Hills known as Clovis Class and Watchtower Class from the north flank of Husband Hill [Ruff et al., 2006; Squyres et al., 2006]. The coarsely bedded lower unit at the Barnhill outcrop was significantly contaminated with soil such that no exposures of outcrop large enough to fill the Mini-TES field of view were available. Two displaced outcrop pieces from the

Table 3. Mini-TES Spectral Deconvolution Results^a

	Percentage
<i>Irvine Class</i>	
Pyroxene (Pigeonite)	35 (25)
Sulfate	20
Basaltic glass	15
Plagioclase	10
Olivine	10
Secondary silicate	10
<i>Barnhill Class</i>	
Basaltic glass	40
Secondary silicate	25
Plagioclase	10
Olivine	10
Pyroxene	5
Sulfate	5

^aValues are rounded to the nearest 5%. Deconvolution routine is presented by Ruff et al. [2006] with a mirror dust correction by Smith et al. [2006].

Table 4. CIPW Norm Calculations for Irvine and Barnhill Class Rocks^a

	Irvine	Masada	Esperanza	Barnhill Ace	Posey	JamesCool PapaBell Stars
Fe ³⁺ /Fe _T	0.35	0.45	0.4	0.53	0.51	0.52
Quartz	0	2.42	2.39	3.56	0.81	1.74
Plagioclase	30.34	37.54	33.97	36.96	39.45	39.99
Orthoclase	4.02	3.31	3.07	2.01	2.6	1.95
Diopside	11.67	10.72	11.85	11.83	12.98	10.54
Hypersthene	36.15	28.14	28.91	24.67	24.43	26.19
Olivine	0.11	0	0	0	0	0
Ilmenite	2.01	1.48	1.99	1.48	2.03	2.17
Magnetite	10.83	13.09	13.02	16.02	13.4	13.28
Hematite	0	0	0	0	0	0
Apatite	2.11	2.18	2.11	2.13	3.06	3.06
Zircon	0.07	0.06	0.07	0.07	0.07	0.06
Chromite	0.43	0.78	0.43	1.02	0.74	0.75
Na ₂ SO ₄	0.53	0.53	0.53	0.53	0.53	0.53

^aIn normative wt %. CIPW norms were calculated with 0% Cl and 0.3% SO₃ as done by *McSween et al.* [2006a]. Norm technique was developed by Cross, Iddings, Pirsson, and Washington (CIPW [*Johannsen*, 1931]), but these norms were calculated using a spreadsheet provided by K. Hollocher (Calculation of a CIPW norm from a bulk chemical analysis, 2007, available at <http://www.union.edu/PUBLIC/GEODEPT/COURSES/petrology/norms.htm>).

Posey section dubbed Stearnes and Mackey and a third piece on top of Home Plate called Larry Brown were the most dust free, providing the best Mini-TES spectra of the thinly bedded section (Figure 12a). Brushed rock targets investigated by the other instruments typically provide poor results with Mini-TES because the brushed spots do not fill the Mini-TES field of view.

[27] Although previous deconvolution of the average of these spectra indicated a significant pigeonite component [*Squyres et al.*, 2007], a correction for dust on the Mini-TES pointing mirror [*Smith et al.*, 2006] was newly implemented, overturning this result. The new deconvolution (Figure 11b) shows that basaltic glass remains the dominant component at ~40% abundance, with plagioclase and olivine at ~10% each, but the pyroxene component drops to a range of 5–10%. Sulfates are required at ~5% abundance to achieve a good fit. Secondary silicates also are required at abundances of 20–25%.

3.3. Reconciling Mössbauer and Mini-TES Results

[28] Discrepancies between the mineralogy of the Irvine and Barnhill classes derived by Mössbauer and Mini-TES are a product of the sensitivities of the two instruments. For example, Mössbauer indicates significant magnetite and np ox in these rocks, while the Mini-TES suggests volcanic glass and in the Barnhill class, secondary silicates. Mössbauer is limited to examining Fe-bearing minerals and is capable of penetrating up to ~200 μm into the rock [*Klingelhöfer et al.*, 2003]. Mini-TES is a remote sensing tool that depends on a rock's thermal properties and consequently can only examine the outermost surface and is susceptible to atmospheric effects and dust contamination.

[29] Np ox comprises up to 29% of the Fe in the Barnhill class and only 4–6% of the Fe in the Irvine class (Table 2), but is not indicated by Mini-TES. Np ox may be spectrally equivalent to the volcanic glass (~40% in the Barnhill class versus 15% in Irvine) that is indicated by Mini-TES (Table 3), if the glass is rich in Fe³⁺ [*McSween et al.*, 2008]. It is unclear if the oxidized component seen by Mössbauer is actually the amorphous alteration product np ox, volcanic glass, or both. Although magnetite was indi-

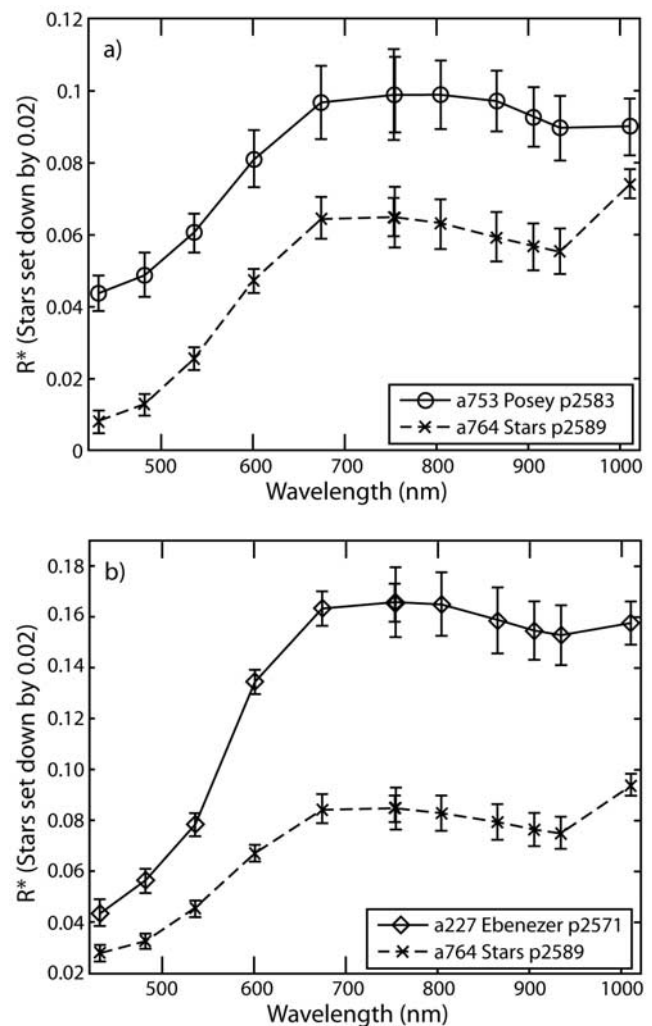


Figure 10. (a) VNIR multispectra graphs for the two end-members CoolPapaBell_Stars and Posey_Manager brushed spots. Suppression of reflectance in the 1009 nm band in the Posey spectrum is consistent with a higher fraction of opaque magnetite as is indicated by Mössbauer (Table 2). (b) VNIR multispectra graphs for CoolPapaBell_Stars and the Clovis class rock Ebenezer brushed spots.

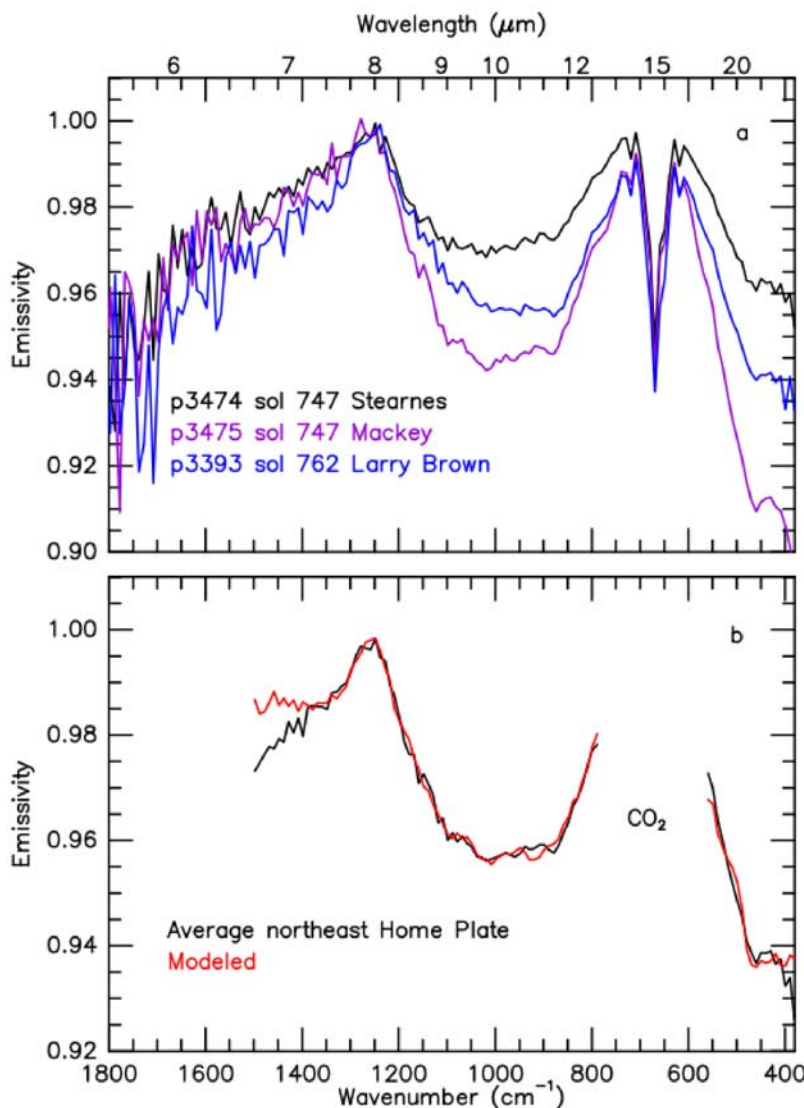


Figure 11. (a) Mini-TES spectra of the three best examples of layered rocks from the northeast outcrops of Home Plate (Barnhill class). (b) Spectral deconvolution of the average of the three spectra provides a good model fit with the component phases shown in Table 3.

cated by Mössbauer observations (Table 2) (Morris et al., submitted manuscript, 2008), its absence in the Mini-TES deconvolution results has been ascribed to the potential difficulty in identifying magnetite because portions of the spectra that are excluded from deconvolution coincide with important magnetite spectral features [Squyres et al., 2007].

4. Primary Composition of Home Plate

[30] The following discussion suggests that the Irvine class represents the unaltered, juvenile basaltic magma that fragmented and formed Home Plate. Compositionally, the Irvine and Barnhill classes are most like one another in nonvolatile major elements (Figure 5), including Al, Si, Ca, Ti, and Fe (Figure 6). Low-temperature chemical weathering at low water: rock ratios does not greatly affect the concentrations of these elements [Hurowitz et al., 2006a].

Nonvolatile major elements make up 88 to 93% of the Irvine and Barnhill rocks and consequently, their concentrations of these elements reflect a near primary composition. Both the Irvine and Barnhill classes contain primary igneous minerals, including high proportions of pyroxene and magnetite, as well as volcanic glass and have low proportions of plagioclase and olivine, according to the Mössbauer and Mini-TES. The igneous mineral assemblages identified by the instruments are corroborated by the CIPW norm calculations (Table 4), further linking the two rock classes.

[31] At terrestrial phreatomagmatic deposits, lava, scoria, air fall, and base surge deposits are commonly associated to one another, reflecting variable eruption dynamics (wet versus dry or explosive versus effusive) over the duration of an eruption or the lifespan of a volcano. Scoria producing Strombolian activity may either precede phreatomagmatism

as at the Pinacate volcanic field, Mexico [Gutmann, 2002] or occur intermittently during or follow phreatomagmatism such as at Zuni Salt Lake, where scoria interlayers with air fall and base surge deposits and two later scoria cones formed within the maar crater [Ennis *et al.*, 2007]. An increase in magma discharge rates over the course of an eruption may also favor dry Strombolian activity over phreatomagmatism as at Crater Hill, New Zealand [Houghton *et al.*, 1996].

[32] Subtle geochemical differences among major elements, such as slightly higher SiO₂ and lower MgO in the Irvine basalts suggest that, while related to one another, the Barnhill and Irvine class have experienced somewhat different igneous differentiation or chemical weathering histories. The three Irvine class basalts do not follow and lie well off apparent stratigraphic, nearly linear trends in the Barnhill class of increasing SiO₂, Al₂O₃, CaO, and TiO₂ and decreasing FeO* (Figures 6a and 6b). If two-component mixing was the process responsible for these linear trends in the Barnhill class, no Irvine class basalt target that has been analyzed so far can be a mixing end-member. We nevertheless use the Irvine class rock Masada as the best guess unaltered starting composition of the Barnhill class because they are most similar in major elements (Figure 4). Volatile elements were likely acquired after magma formation magma and fragmentation by some other process(es) because variations in most volatile elements are independent of variations in major elements (Figure 6).

[33] The Barnhill class is apparently more altered than the Irvine class, reflected in greater np ox contents (up to 29% of the Fe) and yielding a greater Fe³⁺/Fe_{Total} (Table 2). High Fe³⁺/Fe_{Total} and high proportions of np ox have been interpreted to indicate intense aqueous alteration of the Clovis class rocks [Ming *et al.*, 2006; Morris *et al.*, 2006] that were found on Husband Hill. But if basaltic glass is needed to fit the Mini-TES spectra for the Irvine and Barnhill classes (Table 3), the np ox seen by Mössbauer could be pristine or devitrified glass [McSween *et al.*, 2008]. Differences in the proportions of np ox or glass between the Barnhill and Irvine classes may reflect different degrees of devitrification or rates of cooling. Phreatomagmatic deposits quench rapidly during interaction with water and typically contain a greater proportion of volcanic glass than do basaltic scoria or lava.

[34] The eruption that produced Home Plate did not bring about the same alteration assemblages of Fe-bearing phases, such as smectite clay that are common in terrestrial base surges as indicated by visible and near-infrared (VNIR) reflectance [Farrand and Singer, 1992] and Mössbauer spectrometer. Secondary silicates were identified in the Barnhill class, but not in the Irvine class based on deconvolution of the Mini-TES spectra (Table 3). Ambient eruption conditions of the trigger fluid may have been too oxidizing for smectite to form. Also, the low-pressure atmospheric conditions on Mars may have caused water to rapidly evaporate instead of forming hydrated palagonitic minerals.

[35] Without the grinding capability of the RAT or microanalytical and isotopic analysis of returned samples, we are unable to undeniably confirm a relationship between the Irvine and Barnhill classes. Spatial, compositional, and mineralogical associations between the Home Plate and

the nearby vesicular basalts, however, do support a petrogenetic link.

5. Process of Halogen Enrichment at Home Plate

[36] Barnhill class rocks acquired their excess volatile elements by some process(es) that must explain the following observations: (1) the Barnhill and Irvine classes appear to share a common magmatic source. (2) Variations in volatile elements are independent of variations in major and alkali elements, including in SiO₂, Al₂O₃, MgO, CaO, TiO₂, Na₂O, and K₂O. (3) Cl and Br contents are high relative to unaltered rocks examined in Gusev Crater, while SO₃ concentrations are about the same. (4) the Barnhill class also has higher Cl than volatile-rich undisturbed Martian soils, which are elevated in both SO₃ and Cl and have nearly constant SO₃/Cl ratio (Figure 7a) [Haskin *et al.*, 2005; Yen *et al.*, 2005].

[37] Other Cl- and Br-rich rocks identified in Gusev Crater include a dark-toned, altered rind on the Adirondack class rock Mazatzal [Haskin *et al.*, 2005], a few of the Algonquin class rocks (up to 1.4 wt % Cl [Ming *et al.*, manuscript in preparation, 2008]), and the Clovis class (up to 2.6 wt % Cl [Gellert *et al.*, 2006; Ming *et al.*, 2006]). Although the Clovis class is similarly enriched in Cl and Br, they have lower concentrations of FeO*, Cr₂O₃, TiO₂, and MnO, higher MgO and Ni, and more variable in SiO₂ and Al₂O₃ concentrations [Ming *et al.*, 2006] than the Barnhill class. A similar source or process may have been responsible for the elevated Cl and Br in Clovis and Barnhill classes, but they were most likely derived from different primary basalt compositions.

[38] Halogen elements are highly soluble in aqueous fluids and are concentrated in almost any geologic brine, including evaporitic, cryogenic, hydrothermal, and primordial brines. The high degree of mobility of the halogens means that numerous processes can change their abundance. These include (1) igneous processes, such as fractional crystallization, partial melting, assimilation, and magma degassing, (2) salt coating and surface alteration, including as rock rinds, volcanic encrustation, and weathering, (3) fractional precipitation of evaporitic brine, and (4) hydrothermal brine addition or alteration.

5.1. Igneous Processes

[39] Because the grains that compose the Barnhill class are igneous, it is possible that primary igneous processes caused the high halogen concentrations. These include fractional crystallization, partial melting, crustal contamination, and fractional magma degassing.

[40] If fractional crystallization caused the enrichment in halogen elements at Home Plate, Br and Cl would be unfractionated as is observed in mid-ocean ridge basalts on Earth [Jambon *et al.*, 1995]. In the Barnhill class, however, Br/Cl varies by over a factor of 4. Also, halogens would correlate with other similarly incompatible elements, such as the alkali element K. Conversely, halogen and alkali-enriched, low-degree partial melts of the mantle would also have correlations between Cl and K. This is not observed in the Barnhill class rocks. Partial melting of a different, volatile-enriched mantle source region could also account for high halogen concentrations, such as at terres-

trial subduction zones [e.g., *Kent et al.*, 2002]. But we see this as unlikely because the Cl-poor Irvine class basalts appear to share a common magmatic source.

[41] The assimilation of volatile element-enriched country rock may also contribute halogens to a magma. The Irvine and Barnhill class rocks are more primitive (have a higher $Mg/(Mg+Fe)$) than Adirondack class basalts, which have been interpreted as near direct mantle melts in equilibrium with the Martian mantle at 1 GPa [*Monders et al.*, 2007]. This suggests that the Irvine and Barnhill classes are also near mantle melts and have not assimilated significant crustal melts.

[42] An oxidized magma that is under going open-system degassing will preferentially lose a S-rich vapor and evolve to lower S/Cl and S/Br ratios [*Scaillet et al.*, 1998; *Spilliaert et al.*, 2006]. If this were the cause of halogen enrichment in the Barnhill class, then Irvine class basalts would have similarly high Cl abundances and low S/Cl, but this is not the case (Table 1 and Figures 5 and 7).

5.2. Coating and Surface Alteration

[43] Unbrushed rock surfaces investigated by the twin rovers commonly contain greater concentrations of Cl, SO_3 , Ni, and Zn than brushed or RATted rock targets [*Gellert et al.*, 2006]. The cause of this has been interpreted to be acid fog alteration [*Banin et al.*, 1997] or low-temperature, low- a_{H_2O} chemical weathering [*Haskin et al.*, 2005; *Hurowitz et al.*, 2006a]. Concentrations of the highly soluble element Br at rock surfaces are variable in all geochemical classes investigated by the twin rovers [*Gellert et al.*, 2006; *Ming et al.*, 2006] and may imply that leaching of Br by ephemeral fluids occurs at the surface of rocks [*Haskin et al.*, 2005]. Ratios of Br/Cl vary by a factor of 4 in the Barnhill class and may reflect some mobile element leaching. This process is difficult to rule out entirely without the grinding capability of the RAT. If surface alteration and wicking of mobile elements processes were common on Mars, then the overall enrichment in Cl and Br in the Barnhill relative to Gusev soil, dust, and most other rock exteriors must be explained by some other process.

[44] Rinds have been identified on a few rocks in Gusev Crater, including the light-toned Adirondack class rock Mazatzal. Progressive abrasion of Mazatzal by the RAT removed a thin (1–2 mm), dark rind with higher Cl, Br, Zn, and K_2O than its basaltic interior [*Haskin et al.*, 2005] (Figure 6). Mazatzal ranges to higher Na/Cl and Br/Cl than the Barnhill class, has systematically lower Cl/ SO_3 , and is more like undisturbed soils analyses (Figure 6). The K_2O and Cl concentrations of the Mazatzal rind correlate very well ($R^2 = 0.99$; Figure 7d), suggesting the simple addition of K-Zn-Cl salt. Simple salt addition also appears to have also occurred in some Algonquin class, where a few targets have higher K_2O concentrations (up to 0.9 wt %), but have similar nonmobile major elements to other Algonquin rocks (Figure 7d) (*Ming et al.*, manuscript in preparation, 2008). For the high- K_2O Algonquin rocks, K_2O correlates well with Cl ($R^2 = 0.91$), as do Zn and Br, suggesting that addition of a simple K-Zn-Cl-Br salt can account for these variations. Without a functioning RAT, it is impossible to rule out a weathering rind on the Barnhill class rocks completely. But if there is a rind, it is not visible in MI images (Figures 3d and 3e) and is not like the simple salt

rind on Mazatzal. No simple correlation exists between Cl, Br, K, and Zn for the Barnhill class (Figure 7).

[45] One interesting model for the formation of salts and rinds on rock surfaces is by interaction with "acid fog" volcanic aerosols [*Banin et al.*, 1997]. Near constant SO_3/Cl in undisturbed soils and dust on Mars has been interpreted as the result of a well-mixed volcanic aerosol component in the "global dust" [*Banin et al.*, 1997; *Newsom et al.*, 1999]. This global dust has higher SO_3/Cl , K_2O/Cl and Na/Cl ratios than Barnhill class rocks (Figure 6e) and appears to have affected Mazatzal [*Haskin et al.*, 2005]. Although volcanic aerosols have likely contributed volatiles to other rocks in Gusev Crater, Home Plate has higher Cl concentrations than the global dust and was probably generated by some other process.

[46] The degassing of volatile elements from a magma or lava flow will encrust its surface vent with native sulfur, sulfates, halides, and amorphous silica. Under high-temperature and reducing conditions, halide salts will dominate the encrustation assemblage. As the magma cools, sulfates and native sulfur will precipitate [e.g., *Oskarsson*, 1981]. Because the SO_3 contents in Barnhill class rocks are comparable to nearby basalts and no rind was observed, we consider this an unlikely explanation for the high halogen concentrations.

5.3. Fractional Evaporation

[47] The evolution of an evaporating brine depends on the initial composition of the fluid. In a S- and Cl-dominated system controlled by basalt weathering, sulfate precipitation precedes the formation of acidic Cl-rich brine, evolving toward lower SO_3/Cl and higher Br/Cl [*Tosca et al.*, 2005; *Tosca and McLennan*, 2006]. In Martian nakhlite meteorites, for example, evaporation of fluids in fractures in cumulate olivine and in interstitial areas following the sequence of Ca-siderite, clay minerals, gypsum, anhydrite, and finally chloride salts [*Bridges and Grady*, 2000; *Bridges et al.*, 2001]. Fractional evaporation under these conditions requires abundant sulfate precipitation along with or prior to chloride salt formation [*Catling*, 1999; *Tosca and McLennan*, 2006]. Although sulfate salts have been found in the vicinity of Home Plate as the friable Arad and Tyrone soils, they have limited distribution and contain geochemical signatures of nearby rocks, indicating a local source and fumarolic origin [*Yen et al.*, 2008].

5.4. Hydrothermal Brine Addition or Alteration

[48] There are 3 possible models for the incorporation of a brine into the Barnhill class and each may have played a role: (1) brine assimilation while the basaltic magma rose through the crust, (2) brine addition during phreatomagmatic fragmentation, and (3) aqueous (hydrothermal) alteration. Our preferred model for Home Plate is brine addition during phreatomagmatic fragmentation that was later overprinted by hydrothermal alteration. This two-stage model is in agreement with rock textures and geochemical and spectral differences between the northwest and southeast sides of Home Plate (Figure 4). All three models, while difficult to differentiate without microanalytical or isotopic techniques require the presence of a persistent brine that was external to the volcanic system.

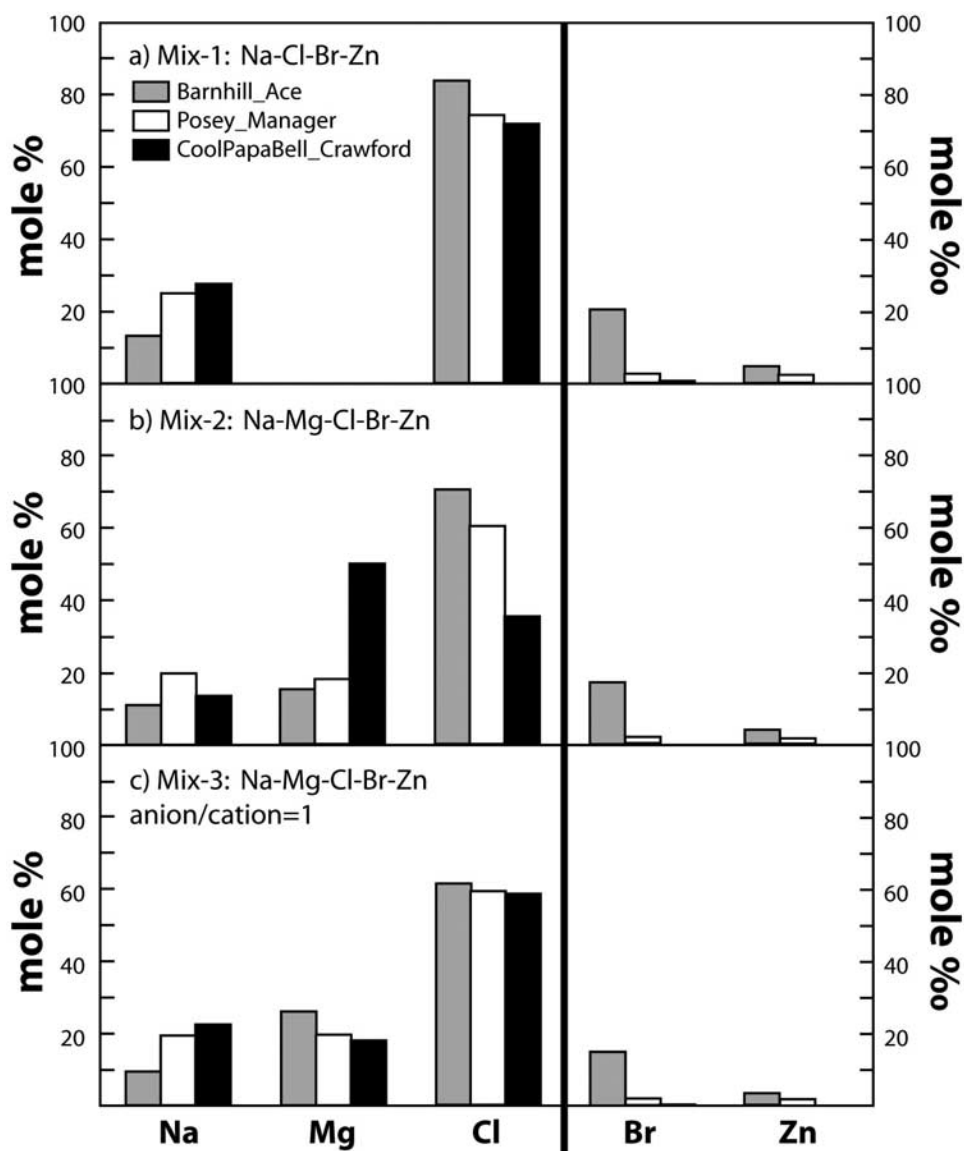


Figure 12. Bar graphs showing salt compositions deduced by two-component mix models (Table 5). Concentrations are shown in mol % for Na, Mg, and Cl and in mol % for Zn and Br. (a) Mix 1 used the ions Na, Cl, Br, and Zn. (b) Mix 2 used the ions Na, Mg, Cl, Br, and Zn. (c) Mix 3 is the same as mix 2, but the anion/cation charge ratio was set.

Table 5. Mix Model Salt Compositions^a

Rock	Na	Mg	Cl	Br	Zn	Anion/Cation	Mix Factor (%)
<i>Model 1</i>							
Barnhill_Ace	13.3	–	84.1	2.08	0.51	6.0	0.9
Posey_Manager	24.8	–	74.7	0.28	0.26	3.0	1.7
CoolPapaBell_Crawford	27.7	–	72.2	0.11	0	2.6	1.0
<i>Model 2</i>							
Barnhill_Ace	11.2	15.7	71.0	1.75	0.43	1.7	1.1
Posey_Manager	20.2	18.5	60.8	0.23	0.21	1.1	1.8
CoolPapaBell_Crawford	13.8	50.4	35.8	0.05	0	0.3	1.0
<i>Model 3</i>							
Barnhill_Ace	9.8	26.5	61.9	1.53	0.37	1	1.1
Posey_Manager	19.9	19.9	59.8	0.22	0.21	1	2.0
CoolPapaBell_Crawford	22.7	18.2	59.0	0.09	0	1	1.0

^aIn mol %. Mix models are (1) using only anions and cations that are significantly different in the Barnhill class from Masada, an Irvine class basalt; (2) including Mg; and (3) setting anion/cation = 1 and solving for mole % Mg in salt. In the final model, the calculated Mg may also include other 2⁺ cations such as Ca, or Fe²⁺. The anion/cation ratio = $([Cl] + [Br])/([Na] + 2[Mg] + 2[Zn])$. The mix factor is the percent salt added to the Masada.

5.4.1. Brine Assimilation

[49] The assimilation of fluid by a magma is very common in terrestrial oceanic basalts as they interact with deeply circulating seawater in the crust [e.g., *Michael and Schilling*, 1989]. Brine assimilation is possible on Mars because subsurface fluids are more stable than under low-pressure atmospheric conditions, but there is no evidence for brine assimilation for any other basalts in Gusev Crater.

5.4.2. Brine Addition During Fragmentation

[50] The trigger fluid for the phreatomagmatic eruption that formed Home Plate may have been a briny groundwater that was incorporated during rapid quenching and subsequent hydration of the volcanic glass. On Earth for example, marine tuff rings, such as Surtsey, Iceland [*Jakobsson and Moore*, 1986], have quenched, hydrated glasses with high Cl concentrations that were acquired from seawater. The initial concentrations of dissolved constituents in the trigger fluid control their concentrations in the volcanic deposit. The character of the fluid can thus be understood by investigating fluid mobile elements in the phreatomagmatic deposit.

5.4.3. Hydrothermal Alteration

[51] Abundant evidence has been found by Spirit for a hydrothermal system at or near Home Plate, such as fumarolic deposits [Yen et al., 200] and highly altered rocks southeast of Home Plate, including some that have high silica [*Squyres et al.*, 2008], high Zn (Ming et al., manuscript in preparation, 2008), or abundant hematite (Morris et al., submitted manuscript, 2008). Although the Barnhill rocks retain their initial igneous phenocryst assemblage, they contain more np ox than the Irvine class basalts. Some degree of hydrothermal alteration is therefore likely but appears to vary around the Home Plate structure as is suggested by differences in spectral slope from east to west across Home Plate (Figure 4) [*Farrand et al.*, 2008]. Hydrothermal alteration of Home Plate would have been caused by an infiltrating, Cl-Br-Zn-Ge hydrothermal brine that may have leached of K₂O. This brine did not appear to affect the nearby vesicular basalts. As alteration first occurs at void and grain boundaries [e.g., *Driefand and Schiffman*, 2004], contrasting permeability or reactivity between the massive basalt and the glass-rich clastic Barnhill may account for differences in degree of alteration.

[52] Enrichment of the volatile siderophile Ge at Home Plate further implicates a hydrothermal origin as Ge is often associated with Zn and Cl in hydrothermal ore deposits on Earth [*Bernstein*, 1985]. Ge has only been found at any notable abundance in a handful of rock classes by the twin rovers. These include the Zn- and Cl-rich rind on Mazatzal [*Haskin et al.*, 2005], the SiO₂-rich FuzzySmith on top of Home Plate [*Squyres et al.*, 2007], and Heat Shield Rock, an iron meteorite in Meridiani Planum [*Schroder et al.*, 2008]. In the Barnhill class, Ge concentrations range between 16 and 71 ppm (Table 1) (Ming et al., manuscript in preparation, 2008).

6. Composition of the Brine

[53] On Mars, subsurface fluids are expected to be loaded with dissolved solids because aquifer recharge rates are exceedingly low, residence times are very high, and water-rock interactions and magmatic heat and mass inputs are

likely to be significant [e.g., *Hoffman et al.*, 2000; *Knauth and Burt*, 2002]. If brine addition during fragmentation contributed volatile elements to Home Plate, the character of the brine can be fingerprinted by differences between the Barnhill class and their apparent unaltered equivalent, the Irvine basalts. A rough estimate of the composition of this groundwater fluid can be made by solving for the concentration of element *i* in the salt component of the brine (C_{salt}^i) in a simple two-component mix:

$$C_{salt}^i(X_{salt}) + C_{basalt}^i(1 - X_{salt}) = C_{Barnhill}^i, \quad (1)$$

where X_{salt} is the fraction of salt added, C_{basalt}^i is the concentration of element *i* in Masada, the Irvine class basalt that is most like the Barnhill class (Figure 5), and $C_{Barnhill}^i$ is the concentration of element *i* in the Barnhill targets Barnhill_Ace, Posey_Manager, and CoolPapaBell_Crawford (Table 1). Targets not included in this model are Barnhill_Fastball, an outlier in major elements (Figure 6), and CoolPapaBell_Stars, which is very similar to Crawford. This simple mix model is limited because it ignores some important components and processes and consequently, should be treated as a minimum estimate for composition of the brine. As stated previously, no correlations exist among Cl, Br, Zn, and K₂O, making the addition of a simple salt unlikely and may reflect overprinting by hydrothermal alteration. This simple two-component mix model also ignores surface dust and assumes perfect distribution of the aqueous phase ($D_{magma}^{vapor} = 1$).

[54] Three iterations of calculating a salt composition were performed and their results are presented in Table 5. In the first mix model (mix 1), only elements at concentrations in the Barnhill targets that are significantly different (greater than error; Table 1) from Masada were used. These include the anions Cl⁻ and Br⁻ and the cations Na⁺ and Zn²⁺. The cation K⁺ was not included because its concentrations are notably lower in the Barnhill class than in the Irvine class (Figure 5). The absence of K⁺ in the mix model does not exclude the mix hypothesis because K₂O may be related to the initial magma composition. Also, alkalis are easily leached by hydrothermal fluids or during palagonization [*Fisher and Schmincke*, 1984]. Because the resulting Cl-rich mix 1 salt (Figure 12 and Table 5) is not charge-balanced with an anion/cation ratio ($([Cl^-] + [Br^-]) / ([Na^+] + 2[Zn^{2+}])$ in mol %) of 2.6 to 6.0, the mix 2 model included an additional cation, Mg²⁺. Concentrations of MgO are significantly greater in two of the three modeled Barnhill targets and the element Mg is considered a mobile element on Mars [*King et al.*, 2004; *Bridges and Grady*, 2000; *Tosca et al.*, 2004] as it is liberated by the dissolution of olivine [*Burns*, 1993]. Among the Barnhill rocks, MgO correlates with major element variations (e.g., Al₂O₃, SiO₂, CaO, and TiO₂; Figures 5 and 7) that were probably caused by an independent igneous process, complicating the mix model. The anion/cation ratios in mix 2 salt are lower (0.3–1.7) than the mix 1 salt but are not charge balanced. We address this as well as the unrelated major element variations that may control MgO in the final mix 3 calculation by fixing the anion/cation ratio as 1 (Table 5); concentrations of Cl, Br, Na, and Zn were calculated with equation (1), but the Mg²⁺ concentration was calculated to fit the charge balance. The results in Table 5 are presented in mol % and so the mix

2 and mix 3 Mg^{2+} concentrations really may be any divalent cation, such as Fe^{2+} or Ca^{2+} .

[55] The three mix models found that the Barnhill class compositions can be made by combining a Masada-like basalt with 1–2% Mg-Na-Zn-Cl-Br salt (Figure 12). The mass of the salt is only a fraction of the brine, however. If the brine was incorporated into the Barnhill rocks during a phreatomagmatic eruption, the concentration of dissolved solids in the brine can be estimated by extrapolating the amount fluid necessary to form soft sediment deformation textures, such as the bomb sag and vesicles at Home Plate. If 15–20% water is needed, based on terrestrial estimates [Heiken, 1972], the brine that interacted with the Barnhill class consists of 10–13% dissolved solids.

6.1. Limits of the Simple Mix Model

[56] Our knowledge of the composition of the Barnhill brine is limited by what can be analyzed by APXS as well as the volatility of the dissolved constituents. Dissolved ions, such as F^- , NH_4^+ , hydrocarbons, or CO_2 , cannot be detected by APXS. In particular, dissolved carbon as HCO_3^- , CO_2 , or CO can make up a significant proportion of total dissolved solids in terrestrial hydrothermal brines, particularly if they interact with carbonate country rock (e.g., Yellowstone Mammoth hot spring [Fournier, 1989]). Carbonates have been identified in Martian meteorites, including nakhlites [Bridges and Grady, 2000] and ALH84001 [e.g., Golden et al., 2000], indicating that CO_3 -saturated fluids have been stable near the Martian surface. Terrestrial phreatomagmatic eruptions release dissolved CO_2 into the atmosphere because it strongly partitions into a vapor phase at low pressure, rather than precipitating a carbonate salt [Lowenstern, 2001]. If dissolved carbonate is present in the Barnhill brine, it could be as much as double our salinity estimate.

[57] In spite of the simplified nature of the two-component mix (basalt + brine) model, we can constrain the composition of the dissolved salts in the brine to Na-Mg-Zn-Cl-Br ($\pm\text{Fe}$, $\pm\text{Ca}$, $\pm\text{CO}_2$). Overprinting hydrothermal alteration likely did occur, but was minor because igneous minerals have not been affected. The presence of abundant magnetite and nanophase Fe oxide instead of the Fe^{2+} smectite, a common phase in terrestrial palagonite, suggests that the brine is fairly oxidized. On Earth, Cl-dominated hydrothermal systems on Earth are typically neutral to slightly acidic (e.g., Yellowstone [Fournier, 1989]). Ferric iron is relatively soluble under low pH conditions. That we do not see evidence for Fe in the Barnhill brine suggests that it formed at a near neutral pH [e.g., Hurowitz et al., 2006b].

6.2. Comparison With Other Planetary Brines

[58] The Na-Mg-Zn-Cl-Br ($\pm\text{Fe}$, $\pm\text{Ca}$, $\pm\text{CO}_2$) brine estimated for the Barnhill class has the lowest ratio of SO_3/Cl of Martian fluids that have been identified. The Barnhill brine is most similar to a Mg-Zn-S-Br-Cl brine modeled by a two-component mix with a relatively unaltered Watchtower class basalt that was followed by surface weathering to make the Wishstone class of Husband Hill [Hurowitz et al., 2006b]. Differences in the S content between the Wishstone and Barnhill brines may reflect either separate alteration or brine fractionation histories.

[59] Other fluids that have been identified on Mars have higher SO_3/Cl than in the Barnhill brine and include primary, undifferentiated fluids, such as the S-rich volcanic aerosols in the global dust [Banin et al., 1997; Newsom et al., 1999] and water-poor, primordial Mg-Na- SO_4 -Cl brines derived from the weathering of ultramafic rocks [King et al., 2004]. Also, the differentiated fluids that precipitated sulfates in Meridiani Planum have been estimated to have SO_3/Cl of about 30, resulting from the weathering of basalt by an influx of sulfuric acid [Tosca et al., 2004, 2005]. And finally, carbonate, sulfate, chloride, and clay minerals in the Martian nakhlite meteorites have been interpreted as the result of fractional precipitation of a Na-Mg-Fe-Ca- SO_4 -Cl- H_2O - HCO_3^- acidic brine [Bridges and Grady, 2000; Catling, 1999; Sawyer et al., 2000] that leached mobile constituents from the mesostasis and olivine at low water:rock ratios [Rost et al., 2006; Bridges and Grady, 2000].

[60] The salinity of the Barnhill brine (10–13% minimum estimate) is greater than that of terrestrial seawater ($\sim 3.5\%$) and dilute Na-Cl hot springs (e.g., 0.16–0.46% [White, 1967]), where recharge by fresh, meteoric water is high. Terrestrial hydrothermal fluids have salinities that are more comparable to the brine at Home Plate. These fluids range from less than that of seawater to about that of magmatic fluids, or $\sim 55\%$ [Nehlig, 1991]. The calculated salinity for the Barnhill brine is consistent with very low groundwater recharge rates and significant magmatic heat and mass inputs and high water:rock interactions.

7. Hydrothermal Activity in Gusev Crater

[61] Primary volcanic exhalents on Mars have an average SO_3/Cl ratio (~ 8) like the Martian global dust [Banin et al., 1997; Newsom et al., 1999; Haskin et al., 2005]. The proximity of the Cl-dominated fluid identified at Home Plate and the Paso Robles class sulfate soils (up to 35.1 wt % SO_3 ; Figure 7a), such as Dead_Sea and Tyrone (Figure 1) suggests that Cl and SO_3 have been fractionated from one another. Boiling of a hydrothermal fluid is a particularly effective way for an acidic S-rich vapor to partition from a more neutral Cl-rich brine [e.g., Fournier, 1989]. If this is the case, then groundwater must have persisted in the Columbia Hills over the evolution of a magma system.

[62] Volatiles exsolved from fluid saturated magmas partition into immiscible S-rich vapor and dense Cl-rich brine. In terrestrial geothermal systems, it is rare for pure, superheated volcanic gases to reach the surface. Instead, circulating groundwater obtains heat and volcanic gasses from a magma at depth. Excess heat causes the aquifer to boil, releasing an acid sulfate vapor that is loaded with volatile metals that form S complexes [Heinrich et al., 1999]. At the surface, this vapor escapes at fumarolic vents or acid sulfate springs. The brine that is left behind after vapor extraction is Cl-rich, typically has a neutral pH, and follows a different, often longer flow path. Cl-rich fluids are often discharged at springs at lower elevations than acid sulfate springs (such as at the Oregon Cascade Range [Ingebritsen et al., 1994]) or where permeability and recharge rates are great that deep brines can mix with the shallow groundwater (such as at Yellowstone [Fournier, 1989]). In Gusev Crater, acid sulfate vapors may have reached the surface as fumaroles or condensed as caustic pools that produced sulfates like those

that have been found at Tyrone, Dead Sea, and Paso Robles. The residual hydrothermal groundwater after vapor extraction is represented by the Na-Mg-Zn-Cl-Br (\pm Fe, \pm Ca, \pm CO₂) brine that has been identified at Home Plate and that incited phreatomagmatism and subsequent hydrothermal alteration.

[63] The ultimate origin of this Cl-rich brine is unknown, but it is probably not related to the degassing of the magma system that formed Home Plate or that directly contributed heat and volcanic gasses. Perfect degassing and accumulation from a magma with 1–5% H₂O with a volume approximately 3 to 15 times larger than the Home Plate structure is necessary for this to occur. If the Barnhill brine has entirely igneous origins, it must be related to a large, long-lived magma system. The fluid more likely came from an outside source, such as the Gusev flood event that carved the Ma'adim Vallis canyon. If the rocks at Home Plate formed in a cold, dry environment similar to the one today, it is likely that the water resided for some time as ground ice or porous salty slush in the near surface before it was melted by magmatism.

8. Conclusions

[64] The excess halogen and volatile siderophile elements found in the clastic Barnhill class rocks that make up Home Plate suggest a persistent aqueous and volcanic history in the Inner Basin in the Columbia Hills. The Na-Mg-Zn-Cl-Br (\pm Fe, \pm Ca, \pm CO₂) brine that interacted with Barnhill rocks by inciting phreatomagmatism and (or) by subsequent hydrothermal alteration has evolved to lower ratios of SO₃/Cl, likely through the extraction of an acid sulfate vapor during boiling of a geothermal system at depth. The investigation of the vicinity of Home Plate has yielded further evidence for a hydrothermal system, including acid sulfate fumarolic [Yen et al., 2008], amorphous silica [Squyres et al., 2008], high Zn, and hematite-rich deposits (Morris et al., submitted manuscript, 2008). The fluid system that the Spirit rover has discovered is completely unlike the sedimentary sulfate deposits found by Opportunity in Meridiani Planum and its geochemical character, distribution and habitability will continue to be assessed as Spirit carries on its traverse.

[65] **Acknowledgments.** Funding for Athena science team members was provided by NASA Mars Exploration Rover mission contracts through the Jet Propulsion Laboratory. We thank Scott McLennan and Allan Trieman for their careful reviews. Many thanks to the scientists and engineers who have made and continue to make Mars Rover science so successful.

References

- Arvidson, R. E., et al. (2006), Overview of the Spirit Mars Exploration Rover Mission to Gusev Crater: Landing site to Backstay Rock in the Columbia Hills, *J. Geophys. Res.*, *111*, E02S01, doi:10.1029/2005JE002499.
- Banin, A., F. X. Han, I. Kan, and A. Cicelsky (1997), Acidic volatiles and the Mars soil, *J. Geophys. Res.*, *102*, 13,341–13,356, doi:10.1029/97JE01160.
- Bell, J. F., III, et al. (2003), Mars Exploration Rover Athena Panoramic camera (Pancam) investigation, *J. Geophys. Res.*, *108*(E12), 8063, doi:10.1029/2003JE002070.
- Bernstein, L. R. (1985), Germanium geochemistry and mineralogy, *Geochim. Cosmochim. Acta*, *49*, 2409–2422, doi:10.1016/0016-7037(85)90241-8.
- Bridges, J. C., and M. M. Grady (2000), Evaporite mineral assemblages in the nakhlite (Martian) meteorites, *Earth Planet. Sci.*, *176*, 267–279, doi:10.1016/S0012-821X(00)00019-4.
- Bridges, J. C., D. C. Catling, J. M. Saxton, T. D. Swindle, I. C. Lyon, and M. M. Grady (2001), Alteration assemblages in Martian meteorites: Implications for near-surface processes, *Space Sci. Rev.*, *96*, 365–392, doi:10.1023/A:1011965826553.
- Burns, R. G. (1993), Rates and mechanisms of chemical weathering of ferromagnesian silicate minerals on Mars, *Geochim. Cosmochim. Acta*, *57*, 4555–4574.
- Cabrol, N. A., et al. (2003), Exploring Gusev Crater with Spirit: Review of sciences objectives and testable hypotheses, *J. Geophys. Res.*, *108*(E12), 8076, doi:10.1029/2002JE002026.
- Catling, D. C. (1999), A chemical model for evaporates on early Mars: Possible sedimentary tracers of the early climate and implications for exploration, *J. Geophys. Res.*, *104*, 16,453–16,469, doi:10.1029/1998JE001020.
- Christensen, P. R., et al. (2003), Miniature Thermal Emission Spectrometer for the Mars Exploration Rovers, *J. Geophys. Res.*, *108*(E12), 8064, doi:10.1029/2003JE002117.
- Crumpler, L. S., T. McCoy, M. Schmidt, and N. Cabrol (2007), Physical volcanology at Gusev Crater, Spirit rover, paper presented at Seventh International Conference on Mars, Lunar and Planetary Institute, Pasadena, Calif., 19–13 July.
- Driefand, A., and P. Schifffman (2004), Very low-temperature alteration of sideromelane in hyaloclastites and hyalotuffs from Kilauea and Mauna Kea volcanoes: Implications for mechanism of palagonite formation, *Clays Clay Miner.*, *52*, 622–634, doi:10.1346/CCMN.2004.0520508.
- Ennis, M. E., M. E. Schmidt, T. McCoy, W. Farrand, and N. Cabrol (2007), Hydrovolcano on Mars? A comparison of Home Plate, Gusev Crater and Zuni Salt Lake Maar, New Mexico, *Lunar Planet. Sci. Conf.*, XXXVIII, Abstract 1966.
- Farrand, W. H., and R. B. Singer (1992), Alteration of hydrovolcanic basaltic ash: Observations with visible and near-infrared spectrometry, *J. Geophys. Res.*, *97*, 17,393–17,408, doi:10.1029/92JB01075.
- Farrand, W. H., J. R. Johnson, M. Schmidt, and J. F. Bell III (2008), VNIR spectral differences on natural and brushed/wind-abraded surfaces on Home Plate, Gusev Crater, Mars: Spirit Pancam and HiRISE color observations, *Lunar Planet. Sci. Conf.*, XXXIV, Abstract 1774.
- Fisher, R. V., and H.-U. Schmincke (1984), *Pyroclastic Rocks*, Springer, New York.
- Fournier, R. O. (1989), Geochemistry and dynamics of the Yellowstone National Park hydrothermal system, *Annu. Rev. Earth Planet. Sci.*, *17*, 13–53, doi:10.1146/annurev.ea.17.050189.000305.
- Gellert, R., et al. (2004), Chemistry of rocks and soils in Gusev Crater from the Alpha Particle X-ray Spectrometer, *Science*, *305*, 829–832, doi:10.1126/science.1099913.
- Gellert, R., et al. (2006), Alpha Particle X-Ray Spectrometer (APXS): Results from Gusev Crater and calibration report, *J. Geophys. Res.*, *111*, E02S05, doi:10.1029/2005JE002555.
- Golden, D. C., D. W. Ming, C. S. Schwandt, R. V. Morris, V. Yang, and G. E. Lofgren (2000), An experimental study on kinetically-driven precipitation of calcium-magnesium-iron carbonates from solution: Implications for low-temperature formation of carbonates in Martian meteorite Allan Hills 84001, *Meteorit. Planet. Sci.*, *35*, 457–465.
- Golombek, M. P., et al. (2003), Selection of the Mars Exploration Rover landing sites, *J. Geophys. Res.*, *108*(E12), 8072, doi:10.1029/2003JE002074.
- Gorevan, S. P., et al. (2003), Rock Abrasion Tool: Mars Exploration Rover mission, *J. Geophys. Res.*, *108*(E12), 8068, doi:10.1029/2003JE002061.
- Gutmann, J. T. (2002), Strombolian and effusive activity as precursors to phreatomagmatism: Eruptive sequence at maars of the Pinacate volcanic field, Sonora, Mexico, *J. Volcanol. Geotherm. Res.*, *113*, 345–356, doi:10.1016/S0377-0273(01)00265-7.
- Haskin, L. A., et al. (2005), Water alteration of rocks and soils on Mars at the Spirit rover site in Gusev Crater, *Nature*, *436*, 66–69, doi:10.1038/nature03640.
- Heiken, G. (1972), Morphology and petrology of volcanic ashes, *Geol. Soc. Am. Bull.*, *83*, 1961–1988, doi:10.1130/0016-7606[1972]83[1961:MAPOVA]2.0.CO;2.
- Heinrich, C. A., D. Guenther, A. Audetat, T. Ulrich, and R. Frischknecht (1999), Metal fractionation between magmatic brine and vapor, determined by microanalysis of fluid inclusions, *Geology*, *27*, 755–758, doi:10.1130/0091-7613[1999]027<0755:MFBMBA>2.3.CO;2.
- Herkenhoff, K. E., et al. (2003), Athena Microscopic Imager investigation, *J. Geophys. Res.*, *108*(E12), 8065, doi:10.1029/2003JE002076.
- Hildreth, W. (1981), Gradients in silicic magma chambers: Implications for lithospheric magmatism, *J. Geophys. Res.*, *86*, 10,153–10,192, doi:10.1029/JB086iB11p10153.

- Hoffman, N., L. P. Knauth, S. Klonowski, D. Burt, R. S. Saunders, R. W. Zurek, P. T. Doran, and S. L. Forma (2000), Ideas about surface runoff features on Mars, *Science*, *290*, 711–714, doi:10.1126/science.290.5492.711c.
- Houghton, B. F., C. J. N. Wilson, M. D. Rosenburg, I. E. M. Smith, and R. J. Parker (1996), Mixed deposits of complex magmatic and phreatomagmatic volcanism: An example from Crater Hill, Auckland, New Zealand, *Bull. Volcanol.*, *58*, 59–66.
- Hurowitz, J. A., S. M. McLennan, N. J. Tosca, R. E. Arvidson, J. R. Michalski, D. W. Ming, C. Schröder, and S. W. Squyres (2006a), In situ and experimental evidence for acidic weathering of rocks and soils on Mars, *J. Geophys. Res.*, *111*, E02S19, doi:10.1029/2005JE002515.
- Hurowitz, J. A., S. M. McLennan, H. Y. McSween Jr., P. A. DeSouza Jr., and G. Klingelhöfer (2006b), Mixing relationships and the effects of secondary alteration in the Wishstone and Watchtower Classes of Husband Hill, Gusev Crater, Mars, *J. Geophys. Res.*, *111*, E12S14, doi:10.1029/2006JE002795.
- Ingebritsen, S. E., R. H. Mariner, and D. R. Sherrod (1994), Hydrothermal systems of the Cascade Range, north-central Oregon, *U. S. Geol. Soc. Prof. Pap.*, *1044-L*, 86 pp.
- Jakobsson, S. P., and J. G. Moore (1986), Hydrothermal minerals and alteration rates at Surtsey volcano, Iceland, *Geol. Soc. Am. Bull.*, *97*, 648–659.
- Jambon, A., B. Deruelle, G. Dreibus, and F. Pineau (1995), Chlorine and bromine abundance in MORB: The contrasting behavior of the Mid-Atlantic and East Pacific Rise and implications for chlorine geodynamic cycle, *Chem. Geol.*, *126*, 101–117, doi:10.1016/0009-2541(95)00112-4.
- Johannsen, A. (1931), *A Descriptive Petrography of the Igneous Rocks*, vol. 1, in *Introduction, Textures, Classification, and Glossary*, 267 pp., Univ. of Chicago Press, Chicago, Ill.
- Johnson, J. R., J. F. Bell, E. Cloutis, M. Staid, W. H. Farrand, T. McCoy, M. Rice, A. Wang, and A. Yen (2007), Mineralogic constraints on sulfur-rich soils from Pancam spectra at Gusev Crater, Mars, *Geophys. Res. Lett.*, *34*, L13202, doi:10.1029/2007GL029894.
- Kent, A. J. R., D. W. Peate, S. Newman, E. M. Stolper, and J. A. Pearce (2002), Chlorine in submarine glasses from the Lau Basin: Seawater contamination and constraints on the composition of slab-derived fluids, *Earth Planet. Sci. Lett.*, *202*, 361–377, doi:10.1016/S0012-821X(02)00786-0.
- King, P. L., D. T. Lescinsky, and H. W. Nesbitt (2004), The composition and evolution of primordial solutions on Mars, with application to other planetary bodies, *Geochim. Cosmochim. Acta*, *68*, 4993–5008, doi:10.1016/j.gca.2004.05.036.
- Klingelhöfer, G., et al. (2003), Athena MIMOS II Mössbauer spectrometer investigation, *J. Geophys. Res.*, *108*(E12), 8067, doi:10.1029/2003JE002138.
- Knauth, L. P., and D. M. Burt (2002), Eutectic brines on Mars: Origin and possible relation to young seepage features, *Icarus*, *158*, 267–271, doi:10.1006/icar.2002.6866.
- Lowenstern, J. B. (2001), Carbon dioxide in magma and implications for hydrothermal systems, *Miner. Deposita*, *36*, 490–502, doi:10.1007/s001260100185.
- McSween, H. Y., et al. (2004), Basaltic rocks analyzed by the Spirit Rover in Gusev Crater, *Science*, *305*, 842–845, doi:10.1126/science.3050842.
- McSween, H. Y., et al. (2006a), Characterization and petrologic interpretation of olivine-rich basalts at Gusev Crater, Mars, *J. Geophys. Res.*, *111*, E02S10, doi:10.1029/2005JE002477.
- McSween, H. Y., et al. (2006b), Alkaline volcanic rocks from the Columbia Hills, Gusev Crater, Mars, *J. Geophys. Res.*, *111*, E09S91, doi:10.1029/2006JE002698.
- McSween, H. Y., et al. (2008), Mineralogy of volcanic rocks in Gusev Crater, Mars: Reconciling Mössbauer, Alpha Particle X-Ray Spectrometer, and Miniature Thermal Emission Spectrometer spectra, *J. Geophys. Res.*, *113*, E06S04, doi:10.1029/2007JE002970.
- Michael, P. J., and J.-G. Schilling (1989), Chlorine in mid-ocean ridge magmas: Evidence for assimilation of seawater-influenced components, *Geochim. Cosmochim. Acta*, *53*, 3131–3143, doi:10.1016/0016-7037(89)90094-X.
- Ming, D. W., et al. (2006), Geochemical and mineralogical indicators for aqueous processes in the Columbia Hills of Gusev Crater, Mars, *J. Geophys. Res.*, *111*, E02S12, doi:10.1029/2005JE002560.
- Mittlefehldt, D. W., R. Gellert, T. McCoy, H. Y. McSween, and R. Li (2006), Possible Ni-rich mafic-ultramafic magmatic sequence in the Columbia Hills: Evidence from the Spirit Rover, *Lunar Planet. Sci.*, *XXXVII*, Abstract 1505.
- Monders, A. G., E. Medard, and T. L. Grove (2007), Phase equilibria investigations of the Adirondack class basalts from the Gusev plains, Gusev Crater, Mars, *Meteorit. Planet. Sci.*, *42*, 131–148.
- Morris, R. V., et al. (2006), Mössbauer mineralogy of rock, soil, and dust at Gusev Crater, Mars: Spirit's journey through weakly altered olivine basalt on the plains and pervasively altered basalt in the Columbia Hills, *J. Geophys. Res.*, *111*, E02S13, doi:10.1029/2005JE002584.
- Nehlig, P. (1991), Salinity of oceanic hydrothermal fluids: A fluid inclusion study, *Earth Planet. Sci. Lett.*, *102*, 310–325, doi:10.1016/0012-821X(91)90026-E.
- Newsom, H. E., J. J. Hagerty, and F. Goff (1999), Mixed hydrothermal fluids and the origin of the Martian soil, *J. Geophys. Res.*, *104*, 8717–8728.
- Oskarsson, N. (1981), The chemistry of Icelandic lava incrustations and the latest stages of degassing, *J. Volcanol. Geotherm. Res.*, *10*, 93–111, doi:10.1016/0377-0273(81)90057-3.
- Rieder, R., R. Gellert, J. Brückner, G. Klingelhöfer, G. Dreibus, A. Yen, and S. W. Squyres (2003), The new Athena Alpha Particle X-Ray Spectrometer for the Mars Exploration Rovers, *J. Geophys. Res.*, *108*(E12), 8066, doi:10.1029/2003JE002150.
- Rost, D., E. P. Vicenzi, and M. Fries (2006), A Host for lithium in MIL03346 and implications for aqueous alteration on Mars, *Lunar Planet. Sci. Conf.*, *XXXVII*, Abstract 2362.
- Ruff, S. W., P. R. Christensen, D. L. Blaney, W. H. Farrand, J. R. Johnson, J. R. Michalski, J. E. Moersch, S. P. Wright, and S. W. Squyres (2006), The rocks of Gusev Crater as viewed by the Mini-TES instrument, *J. Geophys. Res.*, *111*, E12S18, doi:10.1029/2006JE002747.
- Sawyer, D. J., M. D. McGehee, J. Canepa, and C. B. Moore (2000), Water soluble ions in Nakhla Martian meteorite, *Meteorit. Planet. Sci.*, *35*, 743–747.
- Scaillet, B., B. Clemente, B. W. Evans, and M. Pichavent (1998), Redox control of sulfur degassing in silicic magmas, *J. Geophys. Res.*, *103*, 23,937–23,949, doi:10.1029/98JB02301.
- Schroder, C. (2008), Meteorites on Mars observed with the Mars exploration rovers, *J. Geophys. Res.*, *113*, E06S22, doi:10.1029/2007JE002990.
- Smith, M. D., M. J. Wolff, N. Spanovich, A. Ghosh, D. Banfield, P. R. Christensen, G. A. Landis, and S. W. Squyres (2006), One Martian year of atmospheric observations using MER Mini-TES, *J. Geophys. Res.*, *111*, E12S13, doi:10.1029/2006JE002770.
- Spilliaert, N., N. Métrich, and P. Allard (2006), S-Cl-F degassing pattern of water-rich alkali basalt: Modelling and relationship with eruption styles on Mount Etna volcano, *Earth Planet. Sci. Lett.*, *248*, 772–786, doi:10.1016/j.epsl.2006.06.031.
- Squyres, S. W., et al. (2003), Athena Mars Rover Science Investigation, *J. Geophys. Res.*, *108*(E12), 8062, doi:10.1029/2003JE002121.
- Squyres, S. W., et al. (2004a), The Spirit Rover's Athena Science Investigation at Gusev Crater, Mars, *Science*, *305*, 794–799, doi:10.1126/science.3050794.
- Squyres, S. W., et al. (2004b), In Situ evidence for an ancient aqueous environment at Meridiani Planum, Mars, *Science*, *306*, 1709–1714, doi:10.1126/science.1104559.
- Squyres, S. W., et al. (2006), Rocks of the Columbia Hills, *J. Geophys. Res.*, *111*, E02S11, doi:10.1029/2005JE002562.
- Squyres, S. W., et al. (2007), Pyroclastic activity at Home Plate in Gusev Crater, Mars, *Science*, *316*, 738–742, doi:10.1126/science.1139045.
- Squyres, S. W., et al. (2008), Detection of silica-rich deposits on Mars, *Science*, *320*, 1063–1067, doi:10.1126/science.1155429.
- Tosca, N. J., and S. M. McLennan (2006), Chemical divides and evaporate assemblages on Mars, *Earth Planet. Sci. Lett.*, *241*, 21–31, doi:10.1016/j.epsl.2005.10.021.
- Tosca, N. J., S. M. McLennan, D. H. Lindsley, and M. A. A. Schoonen (2004), Acid-sulfate weathering of synthetic Martian basalt: The acid fog model revisited, *J. Geophys. Res.*, *109*, E05003, doi:10.1029/2003JE002218.
- Tosca, N. J., S. M. McLennan, B. C. Clark, J. P. Grotzinger, J. A. Hurowitz, A. H. Knoll, C. Schroder, and S. W. Squyres (2005), Geochemical modeling of evaporation processes on Mars: Insight from the sedimentary record at Meridiani Planum, *Earth Planet. Sci. Lett.*, *240*, 122–148, doi:10.1016/j.epsl.2005.09.042.
- White, D. E. (1967), Mercury and base-metal deposits with associated thermal and mineral waters, in *Geochemistry of Hydrothermal Ore Deposits*, edited by H. L. Barnes, pp. 575–631, Holt, Rinehart and Winston, New York.
- Yen, A. S., et al. (2005), An integrated view of the chemistry and mineralogy of Martian soils, *Nature*, *436*, 49–54, doi:10.1038/nature03637.
- Yen, A. S., et al. (2008), Hydrothermal processes at Gusev Crater: An evaluation of Paso Robles class soils, *J. Geophys. Res.*, *113*, E06S10, doi:10.1029/2007JE002978.

N. Cabrol, NASA Ames Research Center, MS 245-3, Moffett Field, CA 94035-1000, USA.

W. H. Farrand, Space Science Institute, 4750 Walnut Street, Suite 205, Boulder, CO 80301, USA.

R. Gellert, Department of Physics, University of Guelph, MacNaughton Building, Gordon Street, Guelph, ON N1G 2W1, Canada.

J. R. Johnson, Astrogeology Team, U.S. Geological Survey, 2255 N. Gemini Drive, Flagstaff, AZ 86001, USA.

K. W. Lewis, Division of Geological and Planetary Sciences, California Institute of Technology, MC 150-21, Pasadena, CA 91125, USA.

T. J. McCoy and M. E. Schmidt, Department of Mineral Sciences, National Museum of Natural History, Smithsonian Institution, 10th and Constitution Avenues, N.W., Washington, DC 20560-0119, USA. (schidtm@si.edu)

D. W. Ming, R. V. Morris, and C. Schroeder, NASA Johnson Space Center, Code KR, 2101 NASA Parkway, Houston, TX 77058-2906, USA.

S. W. Ruff, School of Earth and Space Exploration, Arizona State University, Tempe, AZ 85287-6305, USA.