

## Slurry Erosive Wear Behavior of Hot Extruded Al6061-Si<sub>3</sub>N<sub>4</sub> Composite

C.S. Ramesh<sup>1,a</sup>, Saleem Khan<sup>2,b</sup>, Zulfiqar Khan<sup>3,c</sup>, and K.S.Sridhar<sup>4,d</sup>

<sup>1</sup>Department of Mechanical Engineering, PES Institute of Technology, 100ft Ring Road, BSK III Stage, Bangalore-560 085. Karnataka, India & Visiting Professor, School of Design, Engineering and Computing, Bournemouth University, Dorset, UK.

<sup>2</sup>Department of Mechanical Engineering, GSS Institute of Technology, Kengeri Satellite Town, Bangalore-560 060, Karnataka, India & Research Scholar, JNTU, Hyderabad, India.

<sup>3</sup>School of Design, Engineering and Computing, Bournemouth University, Dorset, UK.

<sup>4</sup>Department of Mechanical Engineering, PES Institute of Technology, 100ft Ring Road, BSK III Stage, Bangalore-560 085. Karnataka, India

<sup>a</sup>csr\_gce@yahoo.co.in, <sup>b</sup>saleem97@rediffmail.com, <sup>c</sup>ZKhan@bournemouth.ac.uk,  
<sup>d</sup>sridhar\_ks@yahoo.com

**Keywords:** Slurry erosive wear, Hot Extrusion, SEM, Si<sub>3</sub>N<sub>4</sub>

**Abstract.** Silicon nitride possess excellent hot hardness and wear resistance coupled with very good corrosion resistance. Hence, in recent years, silicon nitride has been a serious contender as a reinforcement to develop light weight metal matrix composites for several technological applications. Al6061 is most popular matrix alloy as it possess excellent formability and in particular the quality of extrudates of Al6061 is quite high and are the most preferred in space and naval applications especially for support structures and torpedoes blades respectively. Improved corrosion and slurry erosion resistance on use of silicon nitride in nickel and aluminum alloy matrices have been reported by several researchers.

In the light of the above, this paper focuses on development of Al6061- 6wt% Si<sub>3</sub>N<sub>4</sub> by stir casting the most economical and popular route followed by hot extrusion. Hot extrusion was carried out using 200T hydraulic press at extrusion ratio of 1:10 at a temperature of 550<sup>0</sup>C. Slurry erosion tests were carried out using 3.5% NaCl solution containing silica sand particles of size 312 μm at different rotational speeds varying between 300 rpm and 1200 rpm. The sand concentration was varied from 10 g/l to 40 g/l. Under identical test conditions, hot extruded Al6061- 6wt% Si<sub>3</sub>N<sub>4</sub> composite do possess better slurry erosion resistance when compared with matrix alloy. The mechanism involved in the material removal process during slurry erosion process will also be discussed.

### Introduction

Due to improved physical, mechanical and tribological properties coupled with ease of formability and light weight, aluminium alloy based composites are finding wide applications in the field of aerospace, automobile, defense, marine etc. Among them, Al6061alloy based composites are more popular owing to its reasonable strength and ease of secondary processing such as extrusion and forging [1,2].

As regards the reinforcement in the matrix alloy, ceramics such as SiC, Al<sub>2</sub>O<sub>3</sub>, Si<sub>3</sub>N<sub>4</sub>, TiO<sub>2</sub>, ZrO<sub>2</sub>, have been quite popular. Many researchers have reported that the addition of Si<sub>3</sub>N<sub>4</sub> to aluminium matrix do enhance its mechanical properties [3-6]. However, with the mandatory requirement of secondary processing of light weight MMCs, especially for automotive parts, there is a dire need to optimize the selection of the ceramic reinforcement. Si<sub>3</sub>N<sub>4</sub> which possesses excellent hot hardness and tribological properties coupled with good strength at elevated temperature is currently the popular choice as a reinforcement in MMCs which needs secondary processing. Secondary processing in particular, hot extrusion of MMCs lead to several problems such as debonding due to large thermal mismatch between the reinforcement and the matrix alloy, inferior surface finish, interfacial reactions between the reinforcement and the matrix alloy and

lowering of the tool life of the die. Ramesh et.al have reported the elimination of interfacial reaction between SiC and aluminium alloy during hot extrusion by use of Ni-P coated SiC [7]. XIU Zi-Yang et.al have reported that extrusion has resulted in better homogeneity in the distribution of  $\text{Si}_3\text{N}_4$  particles in composite leading to decrease in island clusters which are characteristic features of as cast composites [8]. Smagorinski et.al have reported that composites formed by extrusion do exhibit good combination of mechanical and physical properties such as CTE, elastic modulus and limit of relaxation [9]. Ramesh et.al have reported that hot extruded composites possess higher microhardness and lower adhesive wear rates under all studied loads and sliding velocities when compared with cast composites [10].

Improvement in thermal conductivity in  $\text{Si}_3\text{N}_4/\text{Al}$  composites after annealing treatment has been reported by Yang Wen-Shu et.al [11]. Ramesh et.al have reported that hot extruded composites exhibit higher hardness and slurry erosive wear resistance when compared with as cast alloy and its composites [12]. Trzaska has reported that both Ni-P and composite of Ni-P/ $\text{Si}_3\text{N}_4$  layers have resulted in excellent corrosion resistance of aluminium substrate [13]. Ramesh et.al have reported the beneficial effect of  $\text{Si}_3\text{N}_4$  as regards the drastic improvement of slurry erosion resistance of light weight cast composites [14]. Krishnaveni et.al have observed improved corrosion resistance for Ni-B- $\text{Si}_3\text{N}_4$  composite coatings compared to its plain counterpart [15].

The above discussed research works highlights the importance of investigating aluminium alloy-silicon nitride composites. Meager information is available as regards the slurry erosive behavior of light weight hot extruded aluminum alloy-  $\text{Si}_3\text{N}_4$  composites. In the light of the above, this work focuses on use of Ni-P coated  $\text{Si}_3\text{N}_4$  particulates as a reinforcement to develop high quality light weight hot extruded MMCs and characterizing its slurry erosive wear behavior in marine environment.

## Experimental Details

**Materials.** Al6061 alloy was procured from Fenfee Metallurgicals, Bangalore, in the form of ingots and its chemical composition is reported in Table 1. The maximum constituent alloying elements present are Mg and Si. Silicon nitride of particle size ranging from 2 to 10  $\mu\text{m}$  has been chosen as reinforcement (Supplied by ACE Rasayan, Bangalore). Prior to dispersing of  $\text{Si}_3\text{N}_4$  in molten aluminum alloy, it has been surface treated with electroless nickel coating using a chemical bath whose constituent is reported in Table 2.

$\text{Si}_3\text{N}_4$  was subjected to immersion in toluene and propane bath followed by acetone wash. Further the surfaces of silicon nitride powder were activated using stannous chloride and hydrochloric acid solution which was followed by palladium sensitization of the surfaces. Completely dried Palladium activated  $\text{Si}_3\text{N}_4$  powders were allowed to activate with the electroless nickel bath to achieve Ni-P coating. The temperature and pH of the bath was maintained at  $85^\circ\text{C}$  and 4.5 respectively. A duration of 30 minutes was adopted for coating. The coated  $\text{Si}_3\text{N}_4$  powder was thoroughly cleaned with distilled water followed by heating in a oven to ensure its complete drying.

Table 1. Chemical Composition of Procured Al6061 Alloy

Si	Fe	Cu	Mn	Ni	Pb	Zn	Ti	Sn	Mg	Cr	Al
0.43	0.43	0.24	0.139	<0.05	0.024	0.006	0.022	0.001	0.802	0.184	Balance

Table 2. Bath composition used for electroless nickel coating

Sl. No.	Bath constituents	Quantity(g/l)
1	Nickel Chloride, hexahydrate $\text{NiCl}_2 \cdot 6\text{H}_2\text{O}$	30
2	Sodium Succinate, hexahydrate $\text{Na}_2\text{C}_4\text{H}_6\text{O}_4 \cdot 6\text{H}_2\text{O}$	10
3	Hypophosphite, monohydrate $\text{NaH}_2\text{PO}_2 \cdot \text{H}_2\text{O}$	20
4	Glycin $\text{H}_2\text{NCH}_2\text{COOH}$	10
5	Lead Nitrate $\text{Pb}(\text{NO}_3)_2$	0.02

**Casting.** Aluminum 6061 alloy ingots, 3Kg in quantity was melted using 6KW electrical resistance furnace. The melt was degassed by using commercially available chlorine based tablet (Hexachloroethane). The composite development set up is shown in Fig.1. The molten metal was agitated by use of ceramic coated mechanical stirrer rotating at a speed of 300rpm to create a vortex. Preheated Ni-P coated 6wt%  $\text{Si}_3\text{N}_4$  ( $600^\circ\text{C}$ , 1hr) was added slowly in to the vortex. The stirring duration was 10 min. The composite melt was then poured in to preheated metallic cylindrical moulds of diameter 80mm and height 110mm at a temperature of  $700^\circ\text{C}$ .



Fig.1 Electrical Resistance Furnace with Stirrer



Fig.2 Hydraulic Press

**Hot Extrusion.** The cast matrix alloy and the developed composites were machined to cylindrical billets of diameter 70 mm and height 100 mm. Graphite paste was applied to outside surfaces of the billets to minimize sticking of aluminum to the containers and the die. These billets were then heated in a furnace at a temperature of  $550^\circ\text{C}$  before inserting into a container and the extrusion die system which were preheated to  $450^\circ\text{C}$  using electrical heaters. The hydraulic press of capacity 200T used for extrusion is shown in Fig. 2. To minimize the friction at the interface of the die and billet, commercially available copper based lubricant was applied to the inner surfaces of the die and container.

The cast matrix alloy and its composites were hot extruded at a temperature of  $550^\circ\text{C}$  with an extrusion ratio of 1:10 using a 200T hydraulic press. The diameter of the extruded rod was 30 mm.

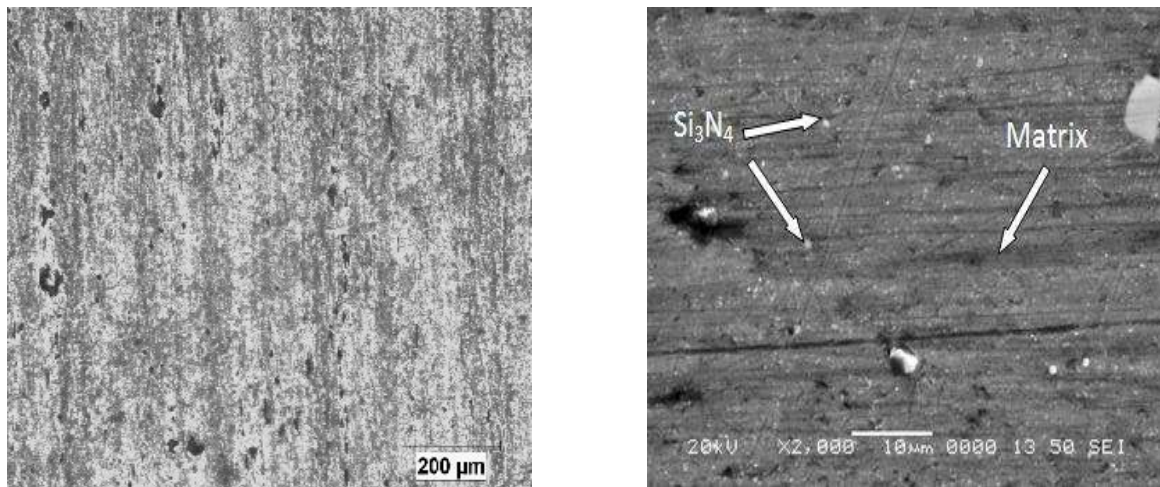
**Slurry Erosion Test.** Slurry erosion wear tests were conducted on polished and thoroughly cleaned rectangular samples of dimensions  $8 \times 8 \times 40$ mm. The samples were weighed before and after wear tests using an electronic balance of accuracy 0.1 mg. The details of this test setup are reported in our earlier works [2].

The slurry used was a mixture of silica sand and 3.5% of sodium chloride (NaCl) in distilled water. The sand concentration was varied from 10 to 40% in steps of 10% with its particle size maintained at  $312 \mu\text{m}$ . The rotational speed was varied from 300 to 1200 rpm in steps of 300 rpm. The total duration was 5 hrs for all the tests conducted. The worn surfaces were subjected to SEM studies to understand the mechanism of material removal.

## Results and Discussion

**Microstructural Studies.** Alignment of the reinforced  $\text{Si}_3\text{N}_4$  particles along the extrusion direction is observed as evidenced in Fig. 3(a). However, the extent of uniformity of distribution of  $\text{Si}_3\text{N}_4$  particles as observed at high magnification is very good. Further, there is a drastic reduction in the particle size after extrusion as shown in Fig. 3(b). This can be attributed mainly to the high state of compressive stresses during the extrusion process which leads to fragmentation of the  $\text{Si}_3\text{N}_4$  particles. The original particle size used was 2 to  $10 \mu\text{m}$ , while on extrusion majority of the  $\text{Si}_3\text{N}_4$

particles have disintegrated in to particle size less than 2 microns. Smaller the particle size with high degree of homogeneity in the distribution of the reinforcement within the metallic matrix alloy leads to improved mechanical properties coupled with excellent wear and corrosion resistance.



(a) Optical Micrograph

(b) SEM

Fig.3 Microstructure of Hot Extruded Al6061-6wt% Si<sub>3</sub>N<sub>4</sub>

### Slurry erosive wear results

**Effect of slurry concentration.** The effect of slurry concentration on erosive wear of hot extruded Al6061 and Al6061-6wt% Si<sub>3</sub>N<sub>4</sub> composite are shown in Fig.4.

It is observed that mass loss increases with increase in slurry concentration in both hot extruded Al6061 alloy and its composites. An increase of three folds in the mass loss of the matrix alloy when compared with the composite is being observed at 40% silica sand concentration. This superior slurry erosion wear resistance can be attributed to the excellent corrosion resistance of silicon nitride coupled with its high hardness. Further, it is reported that silicon nitride reacts with moisture and form thin siliceous film which is highly protective in reducing the mass loss of the composites [14]. Fig.5 shows SEM photographs of worn erosive wear surfaces of hot extruded Al6061-6wt% Si<sub>3</sub>N<sub>4</sub> composites for lowest and highest slurry concentration studied. It is observed that the extent of surface degradation of the composite is quite extensive at high slurry concentration. Severe damage to the matrix in the form of deep cracks and fragmentation of the reinforced silicon nitride have been observed at high slurry concentration which are indicative of larger material loss.

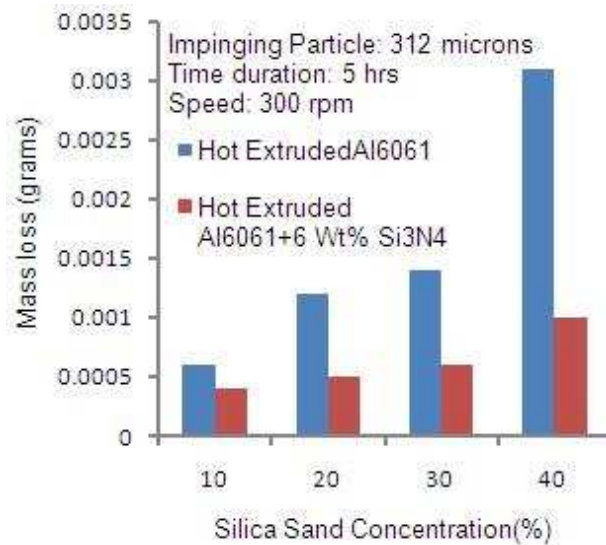
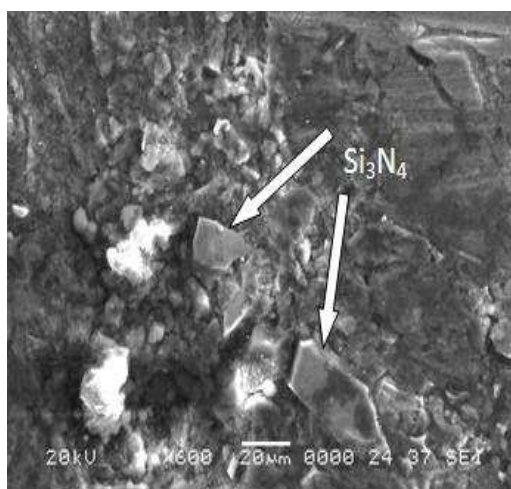


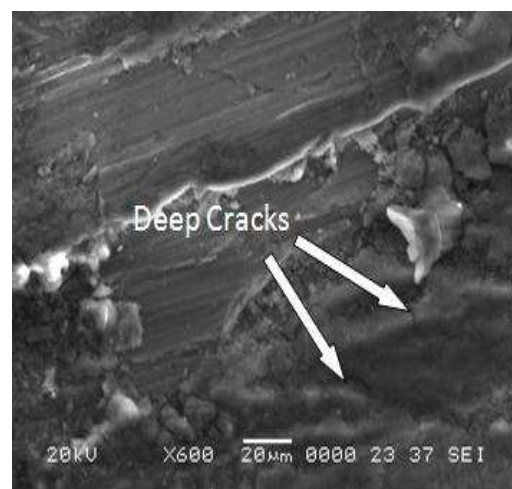
Fig.4 Variation of weight loss of hot extruded Al6061 and Al6061-6wt% Si<sub>3</sub>N<sub>4</sub> composites at different slurry concentration

**Effect of rotational speed.** The effect of rotational speed on erosive wear of hot extruded Al6061 and Al6061-6wt% Si<sub>3</sub>N<sub>4</sub> composite are shown in Fig.6.

It is observed that mass loss increases with increase in rotational speed for both hot extruded Al6061 alloy and its composites. An increase of 6.2% in the mass loss of the matrix alloy when compared with the composite is being observed at 1200 rpm. The increase in mass loss with increase in rotational speed can be attributed to the increased extent of plastic deformation due to increase in impact velocity. The extent of surface degradation of the composites at high slurry rotational speed of 1200 rpm is quite appreciable when compared at lower rotational speed of 300 rpm as shown in Fig. 7. Heavy grooving and fragmentation of the surfaces are observed at high speed, while extensive micro pits are the characteristics feature at low rotational speed leading to low material loss.



(a) 10% Slurry Concentration



(b) 40% Slurry Concentration

Fig.5 SEM photographs of worn erosive wear of hot extruded Al6061- 6wt% Si<sub>3</sub>N<sub>4</sub> composites at different slurry concentration

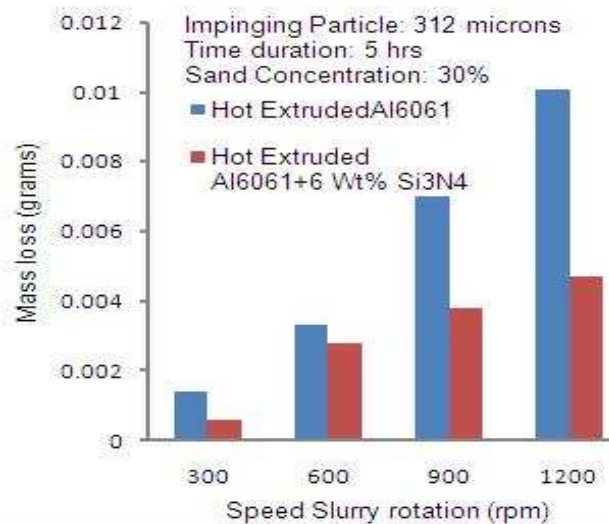
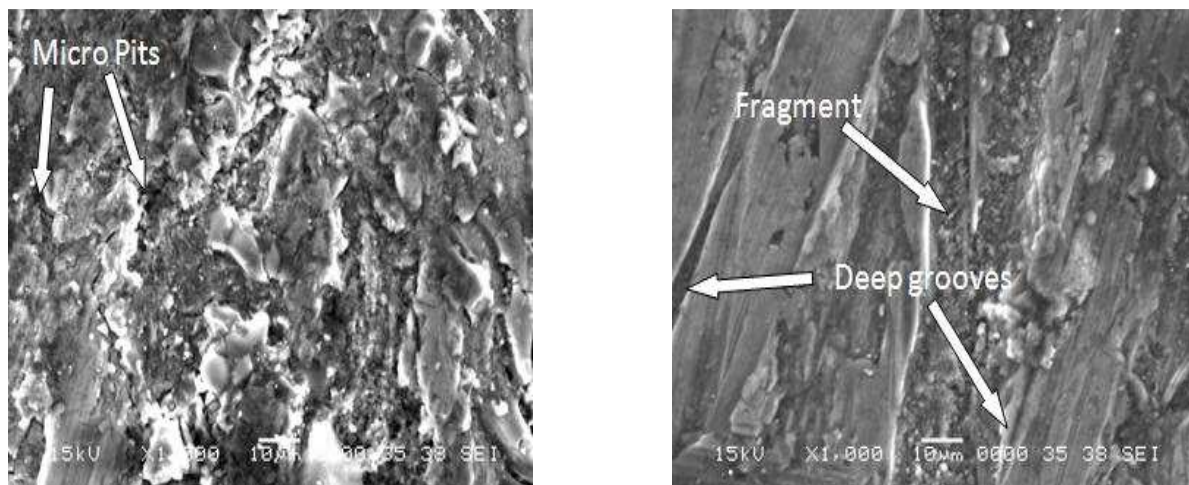


Fig.6 Variation of weight loss of hot extruded Al6061 and 6wt% Si<sub>3</sub>N<sub>4</sub> composites at different slurry rotational speed



(a) 300 rpm for 30% Slurry Concentration

(b) 1200 rpm for 30% Slurry Concentration

Fig.7. SEM photographs of worn erosive wear of hot extruded Al6061- 6wt% Si<sub>3</sub>N<sub>4</sub> composites at different rotational speed

## Conclusion

Hot extruded Al6061-6wt% Si<sub>3</sub>N<sub>4</sub> composites exhibit excellent slurry erosion wear resistance in 3.5% NaCl sand slurry.

**Acknowledgments:** The authors express their sincere thanks to Prof.D.Jawahar, CEO, PES Group of Institutions and Dr.K.N.B.Murthy, Principal & Director, PESIT, Bangalore for all the support and encouragement to carry out this work.

**References**

- [1] Halil Arik, Effect of mechanical alloying process on mechanical properties of  $\alpha$ - $\text{Si}_3\text{N}_4$  reinforced aluminum-based composite materials, *Materials & Design*, 29 (2008) 1856–1861.
- [2] C.S. Ramesh, R. Keshavamurthy, B.H. Channabasappa, S. Pramod, Influence of heat treatment on slurry erosive wear resistance of Al6061 alloy, *Material & Design*, 30 (2009) 3713–3722.
- [3] V. Amigo, J.L. Ortiz and M.D. Salvador, Microstructure and mechanical behavior of 6061Al reinforced with silicon nitride particles, processed by powder metallurgy, *Scripta mater.* 42 (2000) 383–388.
- [4] C.S. Ramesh, R. Keshavamurthy, B.H. Channabasappa, Abrar Ahmed, Microstructure and mechanical properties of Ni-P coated  $\text{Si}_3\text{N}_4$  reinforced Al6061 composites, *Materials Science and Engineering A* 502 (2009) 99-106.
- [5] H.C. Man, C.T. Kwok, T.M. Yue, Cavitation erosion and corrosion behavior of laser surface alloyed MMC of SiC and  $\text{Si}_3\text{N}_4$  on Al alloy AA6061, *Surface & Coatings Technol.* 132 (2000) 11-20.
- [6] H.U. Ruihua, Effect of  $\text{Si}_3\text{N}_4$  addition on the mechanical properties, microstructures and wear Resistance of Ti-6Al-4V Alloy, *J. Mater. Sci. Technol.* 23 (2007) 257-261.
- [7] C.S. Ramesh, R. Keshavamurthy, G.J. Naveen, Effect of extrusion ratio on wear behaviour of hot extruded Al6061– $\text{SiC}_p$  (Ni–P coated) composites, *Wear* 271 (2011) 1868-1877.
- [8] XIU Zi-yang, Effects of extrusion deformation on mechanical properties of sub-micron  $\text{Si}_3\text{N}_4$ /2024 composite, *Trans. Nonferrous Met. Soc. China* 19 (2009) 373-377.
- [9] M.E. Smagorinski, The Properties and microstructure of Al-based composites reinforced with ceramic particles, *Material Science and Engineering A*244 (1998) 86-90.
- [10] C.S. Ramesh, Mir Safiulla, Wear behavior of hot extruded Al6061 based composites, *Wear* 263 (2007) 629–635
- [11] Yang Wen-Shu, Microstructure and thermal conductivity of submicron  $\text{Si}_3\text{N}_4$  reinforced 2024Al composite, *Trans. Nonferrous Met. Soc. China* 19(2009) 378-381.
- [12] C.S. Ramesh, R. Keshavamurthy, Sand Slurry Erosive Wear Behavior of Hot Extruded Al6061-SiC Composites, *Journal of Minerals & Materials Characterization & Engineering*,10 (2011) 493-505.
- [13] M. Trzaska, Studies of the structure and properties of Ni-P and Ni-P/ $\text{Si}_3\text{N}_4$  surface layers deposited on aluminum by the electroless method, *Journal of Achievements in Materials and Manufacturing Engg.*, 43 (2010) 269-275.
- [14] C.S. Ramesh, R. Keshavamurthy, Slurry erosive wear behavior of Ni–P coated  $\text{Si}_3\text{N}_4$  reinforced Al6061 Composites, 32 (2011)1833-1843.
- [15] K.Krishnaveni, T.S.N.SankaraNarayanan, S.K.Seshadri, Corrosion resistance of electrodeposited Ni–B and Ni–B– $\text{Si}_3\text{N}_4$  composite coatings, *Journal of Alloys & Compounds*, 480 (2009) 765–770.