



Received: 6 February 2017 | Accepted: 22 November 2017

DOI: 10.1111/2041-210X.12963

REVIEWMethods in Ecology and Evolution 

Isotopic methods for non-destructive assessment of carbon dynamics in shrublands under long-term climate change manipulation

Louise C. Andresen¹  | Maria T. Domínguez² | Sabine Reinsch²  |
 Andrew R. Smith^{3,2} | Inger K. Schmidt⁴ | Per Ambus⁴ | Claus Beier⁵ |
 Pascal Boeckx⁶ | Roland Bol^{7,1} | Giovanbattista de Dato⁸ | Bridget A. Emmett² |
 Marc Estiarte^{9,10} | Mark H. Garnett¹¹ | György Kröel-Dulay¹² | Sharon L. Mason¹ |
 Cecilie S. Nielsen¹³ | Josep Peñuelas^{9,10} | Albert Tietema¹

¹Institute for Biodiversity and Ecosystem Dynamics (IBED), University of Amsterdam, Amsterdam, the Netherlands; ²Centre for Ecology and Hydrology, Bangor, UK; ³School of Environment, Natural Resources & Geography, Bangor University, Bangor, UK; ⁴Department of Geosciences and Natural Resource Management, University of Copenhagen, Copenhagen, Denmark; ⁵Centre for Catchments and Urban Water Research, Norwegian Institute for Water Research (NIVA); ⁶Isotope Bioscience Laboratory - ISOFYS, Ghent University, Ghent, Belgium; ⁷Institute of Bio- and Geosciences, IBG-3: Agrosphere, Forschungszentrum Jülich, Jülich, Germany; ⁸Department for Innovation in Biological, Agro-food and Forest systems, University of Tuscia, Viterbo, Italy; ⁹CSIC, Global Ecology Unit CREAM-CSIC-UAB, Cerdanyola del Vallès, Catalonia, Spain; ¹⁰CREAF, Cerdanyola del Vallès, Barcelona, Catalonia, Spain; ¹¹NERC Radiocarbon Facility, Scottish Enterprise Technology Park, East Kilbride, UK; ¹²Centre for Ecological Research, Institute of Ecology and Botany, Hungarian Academy of Sciences, Budapest, Hungary and ¹³Department of Forest Ecology and Management, Swedish University of Agricultural Sciences, Umeå, Sweden

Correspondence

Maria T. Domínguez
 Email: mdominguez23@us.es

Present addresses

Louise C. Andresen, Department of Earth Sciences, University of Gothenburg, Göteborg, Sweden

Maria T. Domínguez, Department of Crystallography, Mineralogy and Agricultural Chemistry, Edaphology Unit, University of Seville, Seville, Spain

Giovanbattista de Dato, Council for Agricultural Research and Economics (CREA) - Research Centre for Forestry and Wood, Arezzo, Italy

Funding information

European Commission, Grant/Award Number: FTP7-ICT-2008-1; VKR Foundation; Spanish Government, Grant/Award Number: CGL2016-79835-P; Catalan Government, Grant/Award Number: SGR2014- 274; European Research Council, Grant/Award Number: ERC-SyG-610028; Hungarian Scientific Research, Grant/Award Number: OTKA K112576; János Bolyai Research Scholarship of the Hungarian Academy of Sciences

Handling Editor: Robert Freckleton

Abstract

1. Long-term climate change experiments are extremely valuable for studying ecosystem responses to environmental change. Examination of the vegetation and the soil should be non-destructive to guarantee long-term research. In this paper, we review field methods using isotope techniques for assessing carbon dynamics in the plant–soil–air continuum, based on recent field experience and examples from a European climate change manipulation network.
2. Eight European semi-natural shrubland ecosystems were exposed to warming and drought manipulations. One field site was additionally exposed to elevated atmospheric CO₂. We discuss the isotope methods that were used across the network to evaluate carbon fluxes and ecosystem responses, including: (1) analysis of the naturally rare isotopes of carbon (¹³C and ¹⁴C) and nitrogen (¹⁵N); (2) use of in situ pulse labelling with ¹³CO₂, soil injections of ¹³C- and ¹⁵N-enriched substrates, or continuous labelling by free air carbon dioxide enrichment (FACE) and (3) manipulation of isotopic composition of soil substrates (¹⁴C) in laboratory-based studies.
3. The natural ¹⁴C signature of soil respiration gave insight into a possible long-term shift in the partitioning between the decomposition of young and old soil carbon sources. Contrastingly, the stable isotopes ¹³C and ¹⁵N were used for shorter-term processes, as the residence time in a certain compartment of the stable isotope label signal is limited. The use of labelled carbon-compounds to study carbon

mineralisation by soil micro-organisms enabled to determine the long-term effect of climate change on microbial carbon uptake kinetics and turnover.

4. Based on the experience with the experimental work, we provide recommendations for the application of the reviewed methods to study carbon fluxes in the plant–soil–air continuum in climate change experiments. ^{13}C -labelling techniques exert minimal physical disturbances, however, the dilution of the applied isotopic signal can be challenging. In addition, the contamination of the field site with excess ^{13}C or ^{14}C can be a problem for subsequent natural abundance (^{14}C and ^{13}C) or label studies. The use of slight changes in carbon and nitrogen natural abundance does not present problems related to potential dilution or contamination risks, but the usefulness depends on the fractionation rate of the studied processes.

KEYWORDS

^{14}C , bomb-C, drought, free air carbon dioxide enrichment, pulse-labelling, stable isotopes, warming

1 | INTRODUCTION

Global climate change scenarios predict that increased greenhouse gas (e.g. CO_2 , CH_4 and N_2O) concentrations in the atmosphere will alter the periodicity and magnitude of drought events and will increase mean global temperatures by approximately 0.2°C per decade (IPCC, 2013). For the European continent this will manifest as drier summers in the South and increased precipitation in the North (IPCC, 2013). Elucidating the consequences of such atmospheric changes for biogenic carbon fluxes is one of the main challenges for the scientific community. Some models have predicted a positive feedback to climate change, resulting from higher increases in respiratory fluxes from ecosystems (e.g. carbon release through soil respiration) than in net primary productivity, which would lead to further increases in atmospheric CO_2 (Denman et al., 2007; Friedlingstein et al., 2006). To assess the likelihood of this positive feedback, experimental studies that analyse the long-term adaptations of ecosystem carbon fluxes to climate change are critically needed. However, climate change experiments are often conducted at short or medium timescales due to funding constraints, or due to the limited life span of the experimental plots, as repeated removal of samples often leads to disturbances and experimental artefacts in the studied system. Hence, there is a necessity for the maintenance of long-term experiments using non-destructive methods.

Carbon fluxes through the plant–soil–air continuum play a central role in soil carbon cycling (Phillips, Fox, & Six, 2006; Zak, Pregitzer, King, & Holmes, 2000). Consequently, above-ground to below-ground fluxes might largely determine carbon emissions from ecosystems under the different climate change scenarios (Chapin et al., 2009). Stable carbon isotope studies can give important insights into carbon fluxes through the plant–soil–air continuum with the minimal disturbance to the system. The isotopic carbon composition of compartments in this continuum is a result of the different isotope fractionation processes along the pathway from CO_2 fixation by plants to

carbon allocation to soil (reviewed in Brüggemann et al., 2011). Thus, the analysis of the natural abundance of carbon isotopes in these compartments can give information about some processes related to photosynthesis and carbon losses through plant or soil respiration. In addition, in situ pulse labelling with the heavy stable carbon isotope (^{13}C) is a powerful tool to analyse short-term dynamics of carbon allocation to the soil with high resolution (Epron et al., 2012; Högberg et al., 2008; Reinsch & Ambus, 2013). The application of these isotopic methods can therefore provide unique information about above-ground-below-ground linkages and their alterations in response to climate changes.

In order to investigate long-term effects of climate change on shrubland ecosystems, an experimental network was established across Europe (the INCREASE network). Studying the response of shrublands to climate change is important, since they are representative ecosystems in Mediterranean and North European countries, where they play an important ecological role in preserving biodiversity (Wessel et al., 2004). In addition, land area covered by shrublands has dramatically decreased in temperate Europe during the past century, due to land use changes, increased pollution and eutrophication, and climate change (Fagúndez, 2013). In Mediterranean regions, however, shrublands have increased their extension due to land abandonment (Fagúndez, 2013).

Within the climate change network, common non-destructive methods were used across sites to ensure the comparison of treatment effects across different climatic regions. Evaluating the impact of climate change treatments on shrubland carbon dynamics was one of the main objectives of this experimental network, and thus a range of methodologies to quantify and trace distinct carbon pools and their fluxes have been applied since 1999. Priority was given to those techniques that minimise disturbances to vegetation and soil to guarantee long-term research.

Here, we review isotope methods that have been applied across this climate change experimental network to study ecosystem carbon

dynamics in the plant–soil–air continuum. In particular, we focus on methodologies that: (1) analyse the abundance of naturally rare isotopes of carbon (^{13}C and ^{14}C) and nitrogen (^{15}N) in the different ecosystem compartments, (2) trace experimentally-induced changes in the isotopic signatures to assess rhizodeposition utilisation by soil biota, and (3) manipulate and trace the isotopic composition of C-compounds to analyse C mineralisation by soil micro-organisms in laboratory studies. Along-side the methods, data from the field studies are presented as accompanying illustrative boxes, and practical recommendations for the applications of these methodologies at large-scale climate change experiments are outlined in Table 1.

2 | THE EXPERIMENTAL CLIMATE CHANGE NETWORK INCREASE

The experimental network for the study of climate change impacts on European shrublands (INCREASE, “An Integrated Network on Climate Research Activities on Shrubland Ecosystems”) was established in 1998. The network is comprised of eight shrublands situated across a natural temperature gradient of mean annual temperature from c. 8°C in the North to c. 16°C in the South, and a rainfall gradient ranging from 510 mm to 1,741 mm from East to West (Figure 1). These sites represent Continental, Atlantic and Mediterranean shrublands. At each site, whole-ecosystem warming and drought treatments were applied in triplicates of 20 m² plots, using automated retractable curtain constructions (see Beier et al., 2004; Mikkelsen et al., 2008 for a

full description). At one of the Danish sites (DK-BRA), a FACE treatment was installed, and combinations of the climate treatments were established and resulted in a plot size of 9 m². Climatic conditions at the plot level (air temperature, humidity, soil temperature and moisture) were recorded in half-hour or hourly intervals, and main carbon pools and fluxes have been periodically monitored, including above-ground plant biomass (Kröel-Dulay et al., 2015), litter production, soil respiration and net ecosystem carbon exchange (Beier et al., 2008; Lellei-Kovács et al., 2016).

3 | METHODOLOGIES USING NATURAL ABUNDANCE OF CARBON ISOTOPES

3.1 | Ecosystem processes reflected by stable isotope fractionation (^{13}C and ^{15}N)

The relative abundance of the rare and heavy stable isotopes of nitrogen (^{15}N) and carbon (^{13}C) compared to the most abundant stable isotope, ^{14}N and ^{12}C , respectively, is expressed as the delta (δ) notation (e.g. $\delta^{13}\text{C}$ and $\delta^{15}\text{N}$ in ‰), which is the deviation of the ^{13}C or ^{15}N abundance in the sample compared to a reference material (Brand & Coplen, 2014). Most natural processes (chemical, physical or enzymatically catalysed) discriminate against heavy isotopes (e.g. ^{13}C , ^{15}N , ^{18}O), which in open systems results in an isotopically depleted product with comparably smaller concentration of the heavy isotopes than its corresponding substrate (Fry, 2006). If the dominant process rate changes, or if the substrate is exhausted, then the δ value of the

TABLE 1 Suggestions and advice to consider when applying isotopic methods for the study of carbon fluxes in the plant-soil system

Method	Expenses (cost)	Advice (do's and don'ts)
Bomb-C (natural ^{14}C abundance)	High (AMS analysis); Equipment for CO_2 sampling is cheap (closed chambers, carbon-free pump, batteries, and molecular sieve system). An IRGA is also required	Avoid materials and labs with possible ^{14}C contamination. If soil CO_2 is to be analysed in the field, long incubation times are required to get sufficient CO_2 for AMS analysis (typically >1 ml). Think carefully about the soil depths to be analysed, and take the sample consistently. ^{14}C signatures might vary strongly along few cm in the soil. If bulk soil ^{14}C is to be analysed, try to remove the roots as much as possible, because of their contrasted ^{14}C signature
In situ $^{13}\text{C}\text{-CO}_2$ pulse-labelling	^{13}C - enriched compounds used for labelling and as standards are usually expensive; ^{13}C determination in specific compounds is expensive, although cheaper than AMS	Consider the target pools to be analysed and the potential dilution of the label by the unlabelled root system or soil carbon pool. If your study requires a high ^{13}C enrichment, mind the potential risk of contaminating the site. Avoid above ambient CO_2 concentrations in the chamber. If you need to monitor CO_2 during your pulse, remember that IRGAs are rather insensitive to $^{13}\text{CO}_2$
Natural abundance of isotopes (^{13}C and ^{15}N)	IRMS analysis is relatively cheap	Make sure the history of sampling site is known (previous labelling experiments?)
^{14}C -substrates mineralisation	Analysis of the trapped $^{14}\text{C}\text{-CO}_2$ is relatively cheap	High risk of contaminating laboratory equipment
^{13}C -injection in situ	Similar to $^{13}\text{C}\text{-CO}_2$ pulse-labelling	Contamination risk of ^{13}C leaching is present, but smaller to our judgement than from $^{13}\text{C}\text{-CO}_2$ experiments. Do not use areas dedicated to natural abundance work

product (such as the plant leaf) may significantly change, due to the underlying fractionation.

Decreases in soil water availability due to drought can alter the isotope signature of both carbon and nitrogen in the above-ground plant biomass. During drought stress, leaves reduce stomatal opening to preserve water. As this happens, the space that confines the air as an immediate source of CO₂ for photosynthesis (the sub-stomatal cavity) becomes a more closed system due to the restriction of the renewal of CO₂, and as a result a higher proportion of the heavy ¹³C in CO₂ is fixed by Rubisco (C3 plants; Tcherkez, Mahe, & Hodges, 2011). Hereby the discrimination against the heavy ¹³C isotope is decreased. As a consequence, in plants with a C3 photosynthetic pathway a ¹³C enrichment in the leaf occurs during drought stress (Cernusak et al., 2013). Indeed, the ¹³C enrichment at the leaf level is related to an increased intrinsic water use efficiency (WUEi), the ratio of assimilation to stomatal conductance (Farquhar & Richards, 1984). Changes in soil water availability may also alter the leaf nitrogen isotope signature by changing the nitrogen availability with soil depth, and thereby the ¹⁵N signature of the plant nitrogen source (Lloret, Peñuelas, & Ogaya, 2004). In general, an increase in the δ¹⁵N signature in the leaves indicates a progressive N saturation and/or N losses in the surrounding system because all major pathways of N loss (denitrification, ammonia volatilisation and nitrate leaching) cause δ¹⁵N enrichment of the remaining nitrogen (Peñuelas, Filella, Lloret, Piñol, & Siscart, 2000). Interpretation of changes in leaf δ¹⁵N, however, is not straightforward since leaf δ¹⁵N signatures might largely depend on mycorrhizal associations, and shifts in nitrogen sources between organic and inorganic

compounds under a drought or warming could influence the leaf δ¹⁵N as well (Andresen, Michelsen, Jonasson, Beier, & Ambus, 2009; Michelsen, Quarmby, Sleep, & Jonasson, 1998). For instance, the increase in plant δ¹⁵N values with aridity may also result from increasing reliance on recycled organic N sources as opposed to new inputs.

Across the INCREASE network the effects of warming and drought on plant ¹³C and ¹⁵N natural abundance was monitored over four years, starting two years after onset of the climate manipulation. Current year shoots or leaves were analysed for δ¹³C and δ¹⁵N immediately after each artificially prolonged drought. Plant material was dried at 70°C and ground to a fine powder before analysis of δ¹³C and δ¹⁵N using isotope ratio mass spectrometry (IRMS). We expected to find higher δ¹³C values: (1) in drought treated plants (compared to control plots) and, (2) in plants growing at drier locations across the precipitation gradient (for a given common plant species). Furthermore, we expected (3) the δ¹⁵N to change in response to drought, as the nitrogen source (depth) is changed (at one location, within-species). Some significant effects of the drought treatment were observed on plant tissue δ¹³C and δ¹⁵N (Box 1). Differences between years (effect of time) were more pronounced than the effect of the drought treatment for *Populus alba* δ¹³C (HU), *Erica multiflora* δ¹⁵N (SP) and *Globularium alypum* δ¹⁵N and δ¹³C (SP). Only *Calluna vulgaris* showed a significant response to the drought treatment for δ¹³C as hypothesised (Box 1a). For *C. vulgaris*, which was growing at several locations (UK-CL, NL and DK-MOLS), the δ¹³C was higher at drier locations, when compared along the precipitation gradient, and also higher in the drought treatment at the

Before you start	Data analysis hint	Time spent
<p>If you are not sure about potential ¹⁴C contamination in your laboratory, use another laboratory or make a swipe test</p> <p>Make previous trials to assess the incubation times required to get a sufficient CO₂ sample</p> <p>Go through the whole process of sample preparation with a trial sample</p>	<p>Discuss your results with the Radiocarbon facility staff</p>	<p>Processing time depends on the type of sample, although is usually low; determination by AMS may take several months depending on the facility</p>
<p>Test your chamber and tubing materials for adsorption/desorption effects, and ensure these are without carbon content (use PTFE (Teflon) tape, not gluing paper-based)</p> <p>Make a previous trial if possible and go through the whole process of sample preparation</p>	<p>Report the label addition per area: g ¹³C m⁻²</p>	<p>Pulse labelling experiments are usually short, but intensive (high sampling frequency immediately after the pulse)</p> <p>Experiments requiring root washing or microbial compound extraction are time consuming</p>
<p>Be aware that FACE can dilute the isotopic signal, most CO₂ enriched systems use ¹³C depleted sources, because this is cheaper</p>		<p>Sampling time and grinding / weighing of sample</p> <p>Analysis usually done at a dedicated natural abundance facility.</p>
<p>You need to work in a dedicated ¹⁴C laboratory safely away from the natural abundance facility</p>		<p>Continue sampling until decline in emission is level, this ensures better model fit</p>
<p>Labelling intended for soil microbial components is more intense from ¹³C liquid substrate <i>in-situ</i> injection than from ¹³C-CO₂ pulse labelling</p>		<p>Soil sampling is destructive, consider to have several parallel plots to harvest an undisturbed plot at each sampling event</p> <p>Sample handling from field work until the extraction takes a few days so plan only one sampling event per week if possible</p>

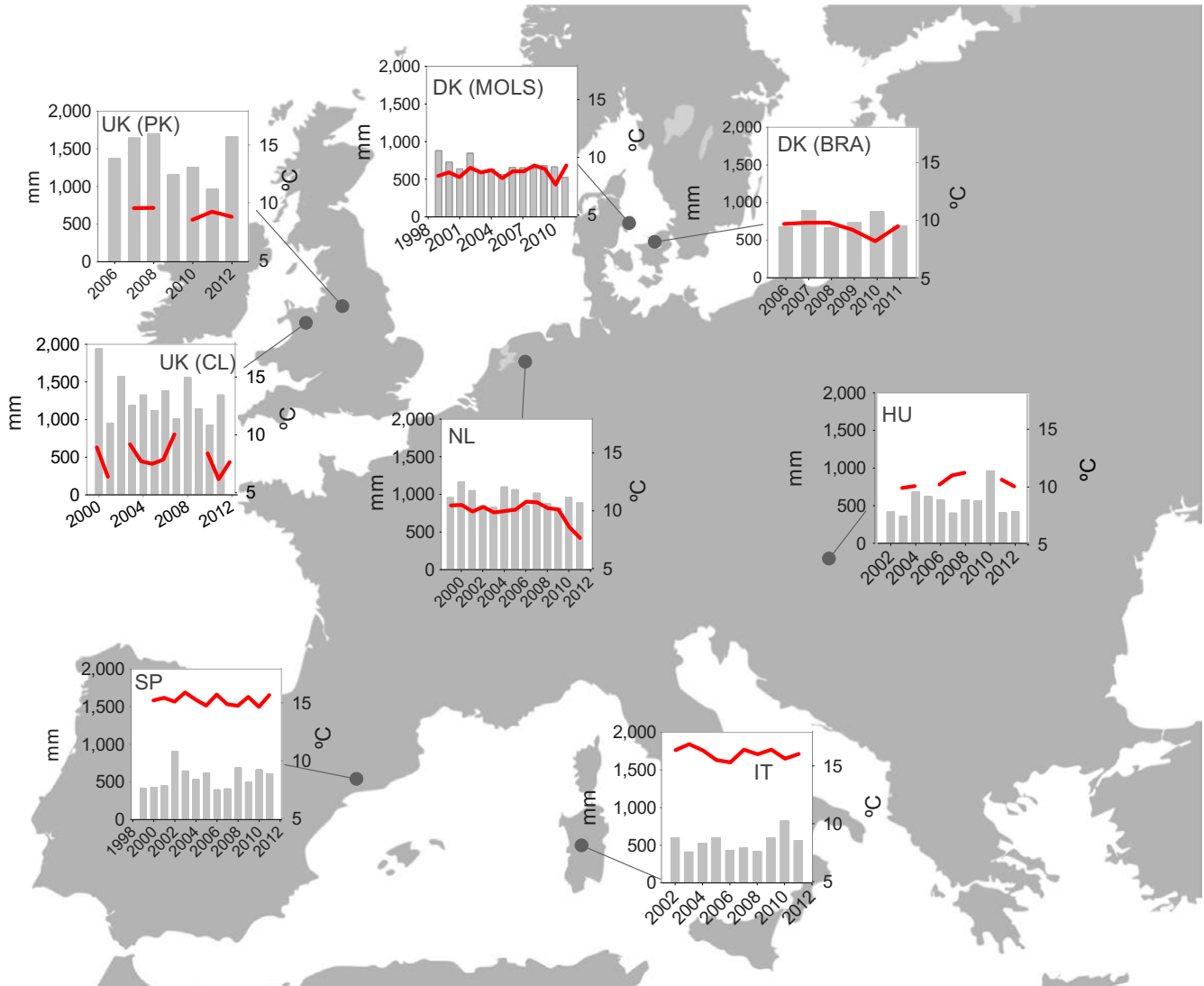


FIGURE 1 Map of the European INCREASE network, with the shrubland field sites and annual temperature (red line, right axis) and precipitation (bars, left axis) norm. Sites in Denmark: Mols (DK-MOLS) and Brandbjerg (DK-BRA); in United Kingdom: Clocaenog (UK-CL) and Peaknaze (UK-PK); in The Netherlands (NL): Oldebroek; in Spain (SP): Garraf; in Italy (IT): Porte Conte, and in Hungary (HU): Kiskunság

NL and UK-CL sites (Box 1b). Finally, we found no response of leaf $\delta^{15}\text{N}$ to drought or warming, however, *P. alba* had a much depleted $\delta^{15}\text{N}$ relative to the other species. We attribute these differences to species specific utilisation of different nitrogen sources (perhaps more dependent on nitrate at the HU site) or different mycorrhizal associations with higher rates of isotopic fractionation.

3.2 | Bomb- ^{14}C technique to assess sources of soil respiration

The natural radioactive ^{14}C abundance can be used to identify different sources of carbon in a mixed pool, for instance, in soil respiration. Radiocarbon signatures of more recent (i.e. <65–70 years) and older carbon sources are different as a result of the nuclear bomb tests in the atmosphere during the 1950/60s. These tests led to an increase in the ^{14}C content in the atmospheric CO_2 in the Northern hemisphere, which reached its maximum in 1963

(“bomb peak” doubling at c. 200% pMC). Ever since the subsequent atmospheric nuclear test moratorium, the “bomb- ^{14}C ” content has decreased due to the dilution with fossil fuel-derived CO_2 in the atmosphere and its incorporation in ocean and terrestrial carbon pools (Trumbore, 2009). Through its incorporation in plant biomass, the radiocarbon analysis of ecosystem fluxes found to contain bomb- ^{14}C provides singularly unique information which crucially and directly confirms the “recent” origin of any (decomposed) carbon substrate. Recently plant-assimilated carbon (autotrophic component of soil respiration) should have a similar radiocarbon signature as the current atmosphere, while the radiocarbon content of older carbon released through SOM mineralisation (heterotrophic component) reflects the year of fixation of that carbon, with the relative contribution of both sources of different ages being resolvable using a mixing model solution. Several studies have successfully achieved the separation of sources of C respiration across ecosystems using the “bomb- ^{14}C ”

method (Cisneros-Dozal, Trumbore, & Hanson, 2006; Schuur & Trumbore, 2006; Subke, Voke, Leronni, Garnett, & Ineson, 2011). In these studies, analysis of the ^{14}C - CO_2 signatures of roots and SOM was performed under controlled conditions and collated with analyses of field gas efflux (the mixed pool). Radiocarbon analysis of soil or ecosystem respiration has been used to evaluate the response of a range of ecosystems to different factors of climate change, such as increasing temperatures, decreasing rainfall or permafrost thaw (Borken, Savage, Davidson, & Trumbore, 2006; Muhr, Borken, & Matzner, 2009; Schuur et al., 2009). The method allows for a direct evaluation about possible differential effects of climate change factors on the fate of recent vs. older soil C moieties, a central question for climate change scientists. The applicability, sensitivity and accuracy of the method is obviously improved when more of the "bomb- ^{14}C " is detectable in the specific analysed C pool, e.g. containing relatively more C which laid down in living tissues and subsequent decomposition products in the 1950 to 1970s period.

We tested the effect of experimental warming and drought on the natural abundance of ^{14}C in respired soil CO_2 at early stages of the climate manipulations at the Peaknaze field site (UK-PK). Our hypothesis was that drought increased heterotrophic respiration more than warming in this seasonally waterlogged soil, due to a greater responsiveness of old soil carbon to drought relative to temperature as a driver (Domínguez, Holthof, Smith, Koller, & Emmett, 2017; Domínguez et al., 2015). Therefore, we expected the greatest ^{14}C -enrichment in the field-collected soil respiration samples from the drought plots. Soil efflux samples were collected in the late experimental drought period (September 2011), using a molecular sieve sampling system (Bol & Harkness, 1995; Hardie, Garnett, Fallick, Rowland, & Ostle, 2005) attached to closed dark respiration chambers placed on the soil overnight. CO_2 was subsequently recovered from the molecular sieve traps for ^{14}C analysis by Accelerator Mass Spectrometry (AMS; Box 2). Soil and root samples were collected to conduct separate incubations to obtain the ^{14}C -signatures of the heterotrophic and autotrophic respiration, respectively. These incubations were performed in leak-tight glass jars with a connection to the molecular sieve sampling system. The results revealed a high heterogeneity of the ^{14}C signature of the soil efflux with no significant effect of the warming treatment, and a trend towards the release of older carbon from the drought plots (although not statistically significant). By comparison with the known record of post-bomb atmospheric ^{14}C - CO_2 concentration (Box 2), the carbon being released from the plots was estimated to have been fixed between six and eight years earlier (M. Domínguez, unpublished).

4 | METHODS USING IN-SITU ^{13}C LABELLING TO STUDY RHIZODEPOSITION UTILISATION

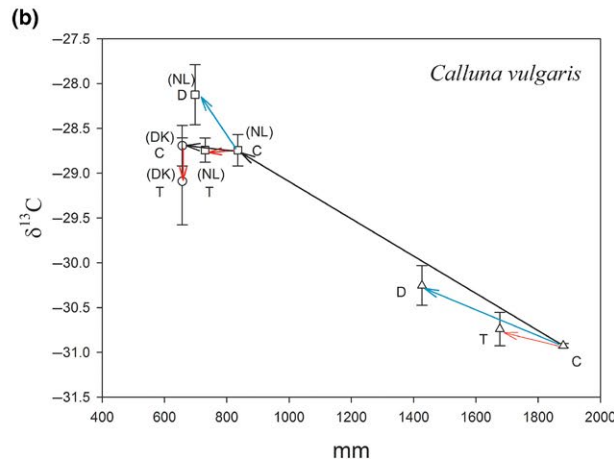
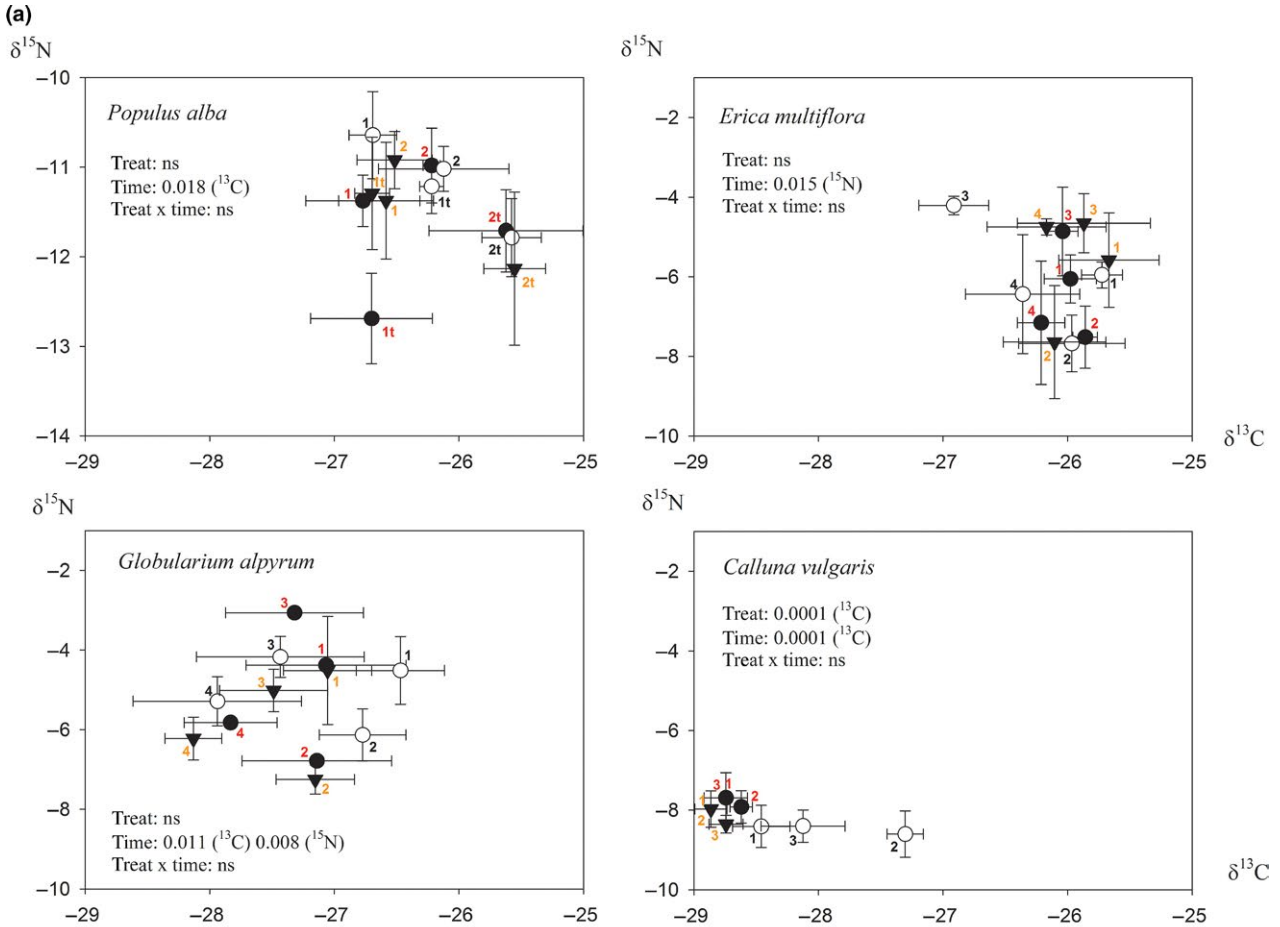
4.1 | ^{13}C - CO_2 pulse labelling

In situ pulse labelling with the stable carbon isotope (^{13}C) is a good method to address questions related to the time-lag between

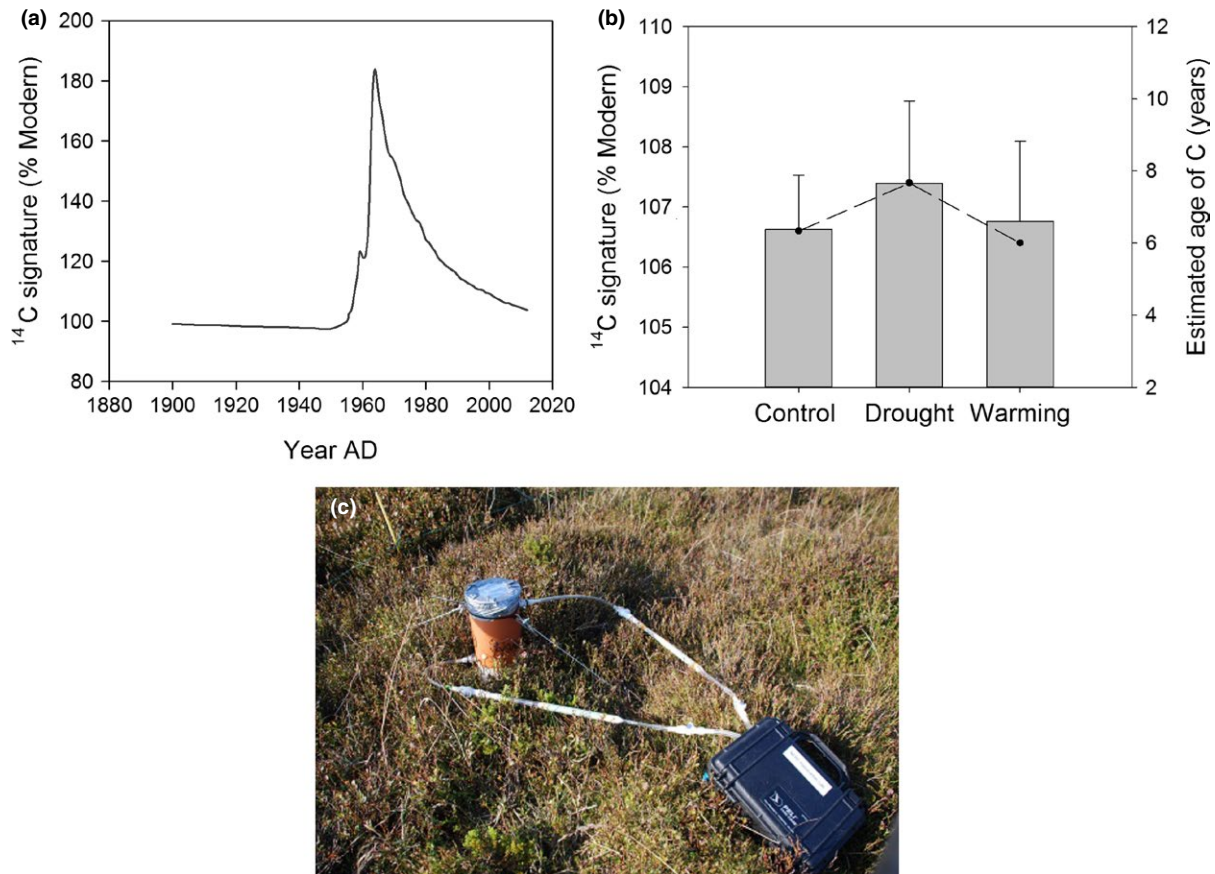
carbon assimilation and CO_2 release from soil (Kuzyakov & Gavrichkova, 2010). In ^{13}C - CO_2 pulse labelling experiments, ^{13}C enriched CO_2 is released in closed, intact plant-soil systems during daylight hours, typically for 1.5 to 6 hr, where it is assimilated by the photosynthetically active plant biomass. Plant and soil samples are taken from unlabelled and labelled systems at different time intervals, with a higher sampling frequency within the first 48 hr after the labelling. The allocation of ^{13}C to below-ground pools (roots, exudates, microbiota) is subsequently analysed, which allows the determination of the fraction of recently fixed carbon actively utilised by e.g. different microbial functional groups if analysis of ^{13}C in specific compounds such as PLFA or RNA is performed. Using ^{13}C - CO_2 pulse labelling, several authors demonstrated that the flux of recently photosynthesised carbon to soil microbes occurs very fast, often within a few hours of $^{13}\text{CO}_2$ uptake (Rangel-Castro et al., 2005; Treonis et al., 2004), with a maximum incorporation of ^{13}C into microbial RNA or biomass occurring within one to eight days after the pulse (Butler, Bottomley, Griffith, & Myrold, 2004; Ostle et al., 2003). These studies have also shown that this flux might be affected by a range of factors such as the seasonality of plant activity. Usually, more carbon is allocated below-ground towards the end of the growing season (Balasooriya et al., 2013; Högberg et al., 2010), under exposure to elevated atmospheric CO_2 concentrations (Jin & Evans, 2010; Reinsch & Ambus, 2013), under drought conditions (Fuchslueger, Bahn, Fritz, Hasibeder, & Richter, 2014) or in plants grown on fertile soils (Denef, Roobroeck, Manimel Wadu, Lootens, & Boeckx, 2009).

In the INCREASE network, several pulse-labelling experiments were conducted in combination with ^{13}C -PLFA analyses to study rhizodeposit utilisation by microbes. At the Cloacaenog site (UK-CL) we aimed to study the utilisation of rhizodeposits along a soil moisture gradient, by applying a ^{13}C - CO_2 pulse during the late growing-season (August 2011). Transparent domes of 50 cm diameter and 100 cm height, enclosing individual *C. vulgaris* plants, were used. Repeated pulses of ^{13}C - CO_2 (99 atom% ^{13}C = 99% ^{13}C + 1% ^{12}C) were applied over 8 hr (Box 3). The domes were sealed to a frame which was inserted into the ground at least ten days before the pulse, and had several sealed septa to collect gas samples to estimate the concentration of the ^{13}C -labelled CO_2 . Plant leaves and soil from the rooting zone were collected at different times after the labelling, using a higher sampling frequency during the first hours after the pulse. Soils were freeze-dried, sieved to ≤ 0.05 mm and PLFAs were extracted. Fatty acid methyl esters (FAMES) were analysed by gas chromatography combustion-isotope ratio mass spectrometry (GC-c-IRMS). The main challenge was the low recovery of ^{13}C label in the below-ground compartment, especially in individual FAMES. Despite the applied ^{13}C concentration of 99 atom%, the apparent low photosynthetic rates combined with the excessive dilution of the ^{13}C label in the large carbon pools of unlabelled woody branches and root- and microbial biomass resulted in an overall low level of ^{13}C enrichment in the FAMES (Box 3). Similar patterns have also been observed in other pulse labelling experiments (Griffiths et al., 2004).

BOX 1 Isotopic signal of plant leaf responses to precipitation. Stable isotopes ($\delta^{13}\text{C}$ and $\delta^{15}\text{N}$) in above-ground plant material collected across the network was analysed by isotopic ratio mass spectrometry (IRMS). (a) Leaves and twigs (t) from *P. alba* (HU), *E. multiflora* L. (SP), *G. alypum* L. (SP) and *C. vulgaris* (NL); filled circle ● is control, open circle ○ is drought treatment, ▼ is warming treatment. *p*-values indicate effects of treatment, year, and the interaction of these factors on ^{13}C or ^{15}N , analysed by two-way ANOVA; ns is non-significant effect. Number indicates year (2001 = 1, 2002 = 2, 2003 = 3 or 2004 = 4). Species (site) differences and annual differences are stronger than treatment effects. (b) $\delta^{13}\text{C}$ of *C. vulgaris* leaves vs. annual precipitation of the previous year



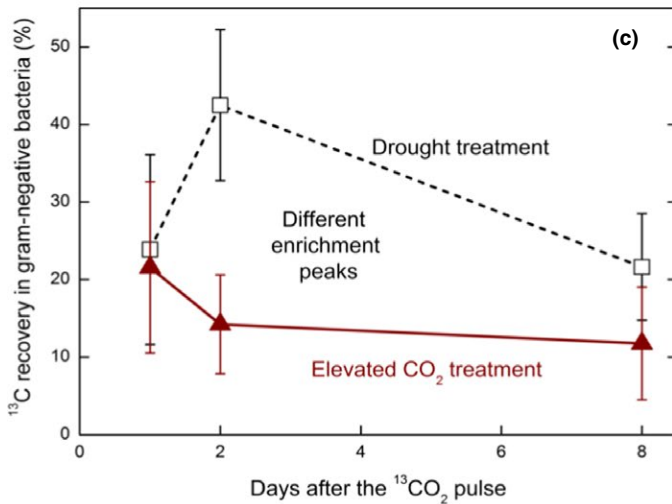
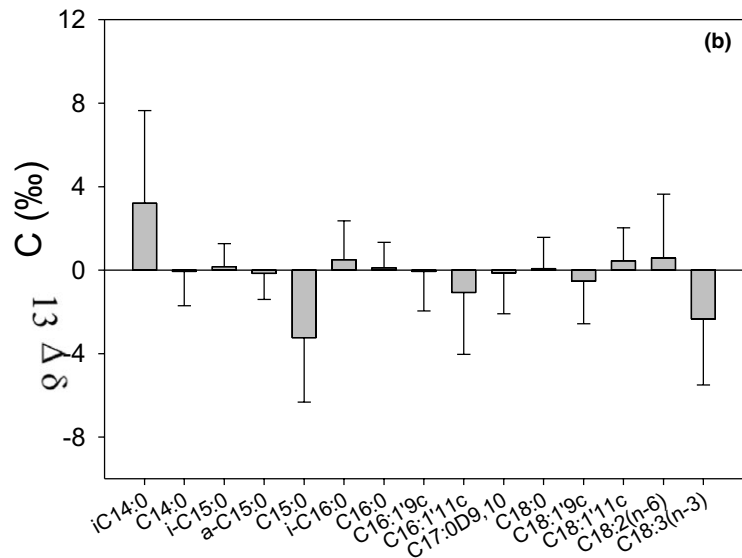
BOX 2 Impact of warming and drought on the ^{14}C signature of soil respiration. (a) Records of atmospheric ^{14}C over the 20th century. The unit for ^{14}C signature (% Modern) is a measurement of the deviation of the $^{14}\text{C}/^{12}\text{C}$ ratio of a sample from the “Modern” standard, which is defined as 95% of the radiocarbon concentration (in AD 1950) of a reference material (NBS Oxalic Acid I, SRM 4990B), adjusted to a $\delta^{13}\text{C}$ reference value of -19‰ . (b) At the UK-PK site, the ^{14}C signature of the soil efflux was measured (bars, left axis). ^{14}C values were highly heterogeneous (ranging from 105.49 to 110.13% Modern; values of $>100\%$ Modern suggest that a substantial component -and potentially all- of the carbon was trapped by photosynthesis during the post-bomb era, that is, since $\sim\text{AD } 1955$). There were no significant effects of the warming treatment, while there was a trend towards the release of older carbon in the drought plots. On average, the carbon being released from the plots had been fixed from the atmosphere between six and eight years earlier (line, right axis). (c) Detail of a closed static chamber used to collect CO_2 from the soil efflux



Three pulse-labelling events were conducted at the Brandbjerg site (DK-BRA) between 2010 and 2013 (Box 3). The Brandbjerg experiment consists of drought and warming manipulations in combination with ambient and elevated levels of CO_2 concentration. The developed experimental setup for pulse-labelling aimed (1) to be easily deployable in remote areas, (2) to distribute labelled $^{13}\text{C}\text{-CO}_2$ as many plots at the same time as possible to ensure similar and constant conditions for CO_2 uptake by the vegetation, and (3) to ensure constant CO_2 concentration available to the vegetation throughout the labelling period. Therefore, a mobile flow-through system suitable for continuous $^{13}\text{C}\text{-CO}_2$ delivery was developed (Box 3): A gas-tight vinyl balloon (c. 3 m diameter) was filled with CO_2 free synthetic air and mixed with $^{13}\text{C}\text{-CO}_2$ (50 or 99 atom%) that supplied the transparent

chambers enclosing the vegetation of interest with air over the duration of the experiments, ranging from 4 to 7.5 hr. Air was pumped continuously through gas tight tubing via electric diaphragm pumps (Reinsch & Ambus, 2013). The first experiment was conducted at the end of the growing season (October 2010), when we observed the highest allocation of carbon below-ground as measured by ^{13}C in soil respiration (Reinsch et al., 2014). The second experiment was conducted in the spring (May 2011) and showed a major allocation of carbon to above-ground structures under elevated atmospheric CO_2 concentration, but carbon allocation to below-ground structures was higher in drought plots than in untreated control plots. The allocation of recently-assimilated carbon under warming conditions was similar to that under ambient conditions. The last experiment,

BOX 3 Analysis of rhizodeposit utilisation by microbes using in-situ ^{13}C - CO_2 pulse-labelling experiments. (a) At the Clocaenog site (UK-CL) this technique was applied along a peat layer gradient. Repeated pulses of ^{13}C - CO_2 were applied during 8 hr to *C. vulgaris* using sealed transparent domes attached to a core inserted into the ground. (b) The incorporation of ^{13}C into soil microbial PLFAs was analysed. Despite a high applied dose of ^{13}C (99 atom%), the dilution of the tracer within the large pool of unlabelled root biomass was remarkable, and as a consequence most of the analysed PLFAs showed no ^{13}C enrichment. (c) ^{13}C recovery in Gram-negative bacteria after a ^{13}C - CO_2 pulse at the Brandbjerg site (DK-BRA). The enrichment pattern in PLFAs attributed to Gram-negative bacteria in soils exposed to drought and elevated CO_2 concentration (+120 ppm) for 8 years show different carbon utilisation patterns and magnitudes under imposed climatic conditions implying changed carbon cycle dynamics. (d) Flow-through pulse-labelling equipment showing the gas reservoir containing ^{13}C - CO_2 for up to 8 hr of labelling connected to transparent Plexiglas chambers via tubing



conducted in early season 2013 (June), was performed during a period with impeded photosynthetic activity and indicated that labelling performance is poor when vegetation is recovering from harsh winter conditions with bare frost or severe drought conditions (Box 3). Thus, it is important that the vegetation of interest displays green, photosynthetically active structures to facilitate CO₂ uptake and sufficient labelling of ecosystem carbon pools. From these labelling experiments we learned that climate change factors change the flow of carbon within the plant-soil-atmosphere continuum. Increased atmospheric CO₂ concentrations accelerate the carbon cycle as seen as labelled carbon through the bacterial community over time. In contrast, drought slowed down carbon transport dynamics with soil microbes showing the ¹³C label later in time (Reinsch et al., 2014).

Our studies illustrate the complexity of controlling *in situ* pulse-labelling experiments in ecosystems dominated by woody plants, which is even more challenging with ¹³C-CO₂ than with ¹⁴C-CO₂ because of their respective atmospheric backgrounds and detection limits (Epron et al., 2012). Ideally, ¹³C doses for *in situ* use should be carefully tested in trials, considering the nature of the studied vegetation and the compounds to be analysed. If for example, specific compounds of the soil microbial biomass are the main interest, then strong isotopic doses should be applied, and it is advisable to deploy the ¹³C pulse when plants naturally allocate carbon below-ground, for example, when preparing for winter. The ¹³C signal can be increased, using highly labelled ¹³C-CO₂ (99 atom %). However, the usage of a highly enriched CO₂ can potentially lead to blurry signals and has to be applied with caution (Watzinger, 2015). Furthermore, ¹³C-CO₂ concentration inside the labelling chamber should be as close as possible to ambient values, because unrealistic high CO₂ concentration will change plant CO₂ uptake. Repeated moderated ¹³C-CO₂ applications during longer exposure times might be more appropriate, but inside closed transparent chambers temperature and humidity may increase if the labelling period is prolonged, which also affects photosynthetic processes (Epron et al., 2012). Losses of ¹³C due to physical diffusion and adsorption/desorption into the chamber and tubing material should also be considered. In particular, the back-diffusion of the ¹³CO₂ from the soil to the atmosphere which entered the soil pores during the labelling might confound the interpretation of measured below-ground respiration (Selsted et al., 2011; Subke et al., 2009). However, when applied properly, the insights into terrestrial carbon allocation can be detailed and novel (Box 3).

4.2 | Free air carbon dioxide enrichment (FACE)-labelling

An alternative method for ¹³C labelling of vegetation and whole-ecosystems is to use ¹³C-depleted CO₂ in FACE experiments. The FACE technique has through decades been used within cropping systems (Kimball, 2016), grasslands (Hovenden, Newton, & Wills, 2014; Mueller et al., 2016; Reich, Hobbie, & Lee, 2014) and forests (Terrer, Vicca, Hungate, Phillips, & Prentice, 2016) experiments, with the primary goal of assessing potential carbon dynamics and enhancement of plant growth (Andresen et al., 2016). As a side effect, the change

in carbon isotopic composition of vegetation exposed to the FACE-treatment can be used to trace freshly assimilated carbon into soil microbial biomass, fauna and organic carbon pools. This approach was used at the Brandbjerg site (DK-BRA). The CO₂ used to elevate concentrations of atmospheric CO₂ to 510 ppm had δ¹³C values ranging from -3.0 to -36.7‰ throughout 8 years of experimental treatment, with an overall mean of -26.1‰. The source of the CO₂ supplied was brewery surplus CO₂ as a chemically obtained side product. The mixing of the added CO₂ via FACE with ambient CO₂ in the moving air mass resulted in a ¹³C depletion ranging from -6.7 to -15.6‰. On average, this equals a depletion of CO₂ in FACE plots of -4.8‰ relative to the atmospheric -8‰ average. Ecosystem carbon pools became depleted accordingly, and the FACE-¹³C depletion acted as a long-term persistent isotope labelling. As a result, soil fauna (Enchytraeids) sampled from each of the climate-treated plots was significantly depleted in δ¹³C by -0.5 to -2.0‰ in the CO₂ treatments (Andresen et al., 2011). This was due to translocated ¹³C substrate through the food web, starting with plant assimilation of ¹³C-depleted CO₂, followed by plant root exudation and microbial utilisation of the ¹³C-depleted substrate and eventual digestion of microbes by enchytraeids. Hereby the freshly supplied carbon source was recognised to be transferred in the natural setting, within a given timescale. Also microbial biomass and PLFAs had a different baseline of ¹³C content in ambient (not-treated) plots compared to CO₂ treated plots (Andresen et al., 2014). This was used for the calculation of ¹³C enrichments in each PLFA biomarker, also illustrating the pathway of newly assimilated carbon into microbial biomass.

A general drawback of the ¹³C-FACE label is again the contamination of the surroundings, as even short and small un-planned draft winds can carry the depleted label onto "ambient" plots, and these will most likely be "contaminated" with ¹³C (though not markedly exposed to high CO₂ concentrations) after some years of FACE activity. Therefore, one needs to collect reference material for the "natural abundance" level well away from the FACE experiment. Also, FACE-CO₂ can only be used as tracer if the isotopic composition of the FACE-CO₂ is considerably different than the isotopic composition of the atmospheric CO₂.

4.3 | In situ injection of ¹³C-enriched substrate solutions

As a much more localised approach, *in situ* injection of ¹³C- and ¹⁵N-enriched substrates directly below the soil surface can be used to assess the competition for the substrate between (1) plants and soil microbes, (2) microbial groups, and (3) the effects of the climate change treatments upon the competition for carbon or nitrogen substrates. Much research has focused on the sharing of nitrogen sources between plant and microbes (Kuzyakov & Xu, 2013), using *in situ* soil injections of ¹⁵N labelled inorganic nitrogen (ammonium and nitrate) or organic nitrogen (amino acids) (Sorensen, Michelsen, & Jonasson, 2008). Once amino acids with dual labelled compounds (¹⁵N and ¹³C) were available for experimental use, double-labelled substrate was used to explore, for example, plant uptake of intact amino acids

(Näsholm, Kielland, & Ganeteg, 2009; Rasmussen, Sauheitl, Eriksen, & Kuzyakov, 2010), and microbial utilisation of carbon substrates (Dungait et al., 2013; Rinnan & Baaath, 2009).

In a labelling experiment at the DK-BRA site, amino acid injections into the soil were conducted to analyse the impact of the climate treatments on the uptake of free amino acid nitrogen by plants and soil microbes. Dual-labelled glycine ($^{13}\text{C}_2\text{ }^{15}\text{N}$ -glycine: 99 atom% ^{13}C —of both carbon atoms—and 99 atom% ^{15}N) was added to $20 \times 20 \text{ cm}^2$ subplots (Andresen et al., 2009). Each sub-plot received 0.1 L of re-mineralised water labelled with 0.027 g glycine, corresponding to $687 \text{ mg glycine m}^{-2}$ (223 mg C m^{-2} or $0.016 \text{ mg glycine g}^{-1}$ dry weight soil). The label was injected into the soil just below the soil surface with a syringe moved among 16 evenly spaced points of a template, placed on top of the vegetation (Andresen et al., 2009). One day (c. 24 hr) after labelling with glycine, soil cores were sampled from the soil surface to 15 cm depth, for determining the relative uptake of the amino acid in plant roots (IRMS solid sample) and soil microbes. As in many other soil labelling experiments, the largest label recovery (measured by ^{15}N recovery since respiratory losses of ^{13}C remain unknown) was found in the total microbial biomass compared to total plant biomass (Kuzyakov & Xu, 2013). A subsample of fresh soil was extracted with re-mineralised water, and another set of subsamples was first vacuum-incubated with chloroform for 24 hr to release microbial carbon and nitrogen (Brookes, Landman, Pruden, & Jenkinson, 1985; Joergensen & Mueller, 1996), before extraction with re-mineralised water. A third subsample of soil was freeze-dried and later used for PLFA extractions. The ^{13}C enrichment in PLFA markers thus indicated the activity (vitality) of the specific microbial group (Watzinger, 2015). We found that bacteria opportunistically utilised the freshly added glycine substrate, that is, incorporated ^{13}C , whereas fungi showed only minor or no glycine derived ^{13}C -enrichment (Andresen et al., 2014). In comparison, ^{13}C traced into the microbial community via the ^{13}C - CO_2 pulse label at the same site (DK-BRA) also reached the bacterial community first. Bacteria showed high ^{13}C enrichment compared to fungal groups (Reinsch et al., 2014). This suggests that in situ injection of ^{13}C substrates might be a plausible alternative to mimic rhizodeposition effects. With the direct addition of ^{13}C label to the soil, a strong labelling of the microbial community was more easily achieved than with the indirect ^{13}C labelling of microbes via plant assimilated ^{13}C - CO_2 (Box 3).

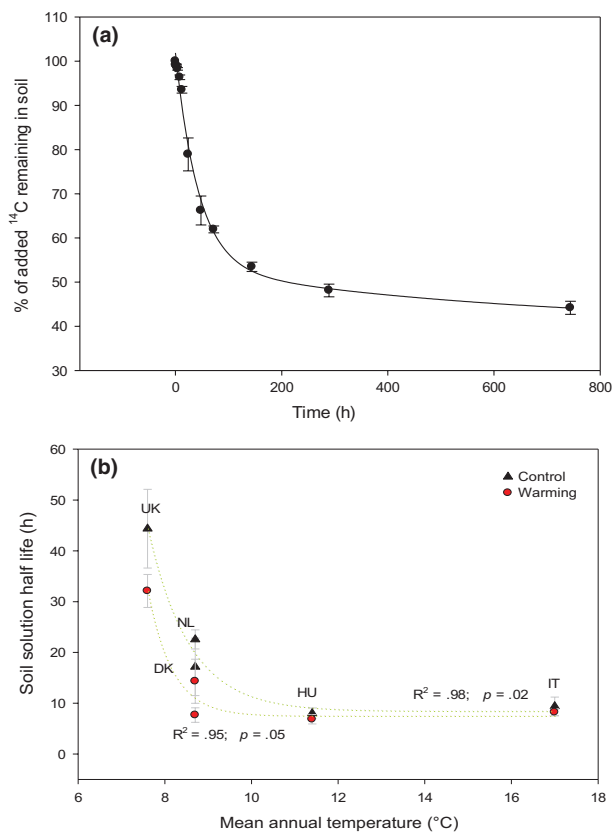
5 | USE OF LABELLED CARBON-COMPOUNDS TO ANALYSE CARBON MINERALISATION BY SOIL MICROORGANISMS

Since soil micro-organisms have an important role in controlling the availability of nutrients via mineralisation of SOM, our understanding of how microbial functioning in the ecosystem is altered by global change must be improved (Grayston, Vaughan, & Jones, 1997). Microbial catabolic diversity of a soil is directly related to the carbon decomposition function within a soil and potentially provides

a sensitive and ecologically relevant measure of the microbial community functional structure (Garland & Mills, 1991). Subsequently, multiple assays have been developed to generate community level physiological profiles (CLPP) that can act as fingerprints of microbial function. Three approaches for measuring CLPP in soils are reported in the literature: (1) Biolog (Garland & Mills, 1991); (2) a substrate-induced respiration (SIR) technique (Degens & Harris, 1997); and (3) MicroResp (Campbell, Chapman, Cameron, Davidson, & Potts, 2003). These methods are all based on quantifying CO_2 respired during the mineralisation of organic carbon compounds that vary in size, charge and structural complexity. The first approach, Biolog MicroPlateTM (Biolog), assesses the catabolic diversity of soil organisms using a microtitre plate by incubating a soil culture in the presence of nutrients and 95 different carbon substrates; respired CO_2 is used to reduce a tetrazolium violet salt, which results in a colour change that can be quantified colorimetrically (Garland & Mills, 1991). This approach, however, has been criticised for bias towards fast growing organisms that thrive in culture (Preston-Mafham, Boddy, & Randerson, 2002). In response to the criticism of the Biolog method, Degens and Harris (1997) developed a method based on SIR where individual substrates are added to intact soil and evolved CO_2 is sampled and quantified. Finally, Campbell et al. (2003) combined aspects of both methods (MicroRespTM) where the response to carbon substrate addition to soil is measured colorimetrically, using a cresol red indicator dye in a microtitre plate format.

Community level physiological profiling of soil samples collected from all treatments across the network was conducted to determine the catabolic utilisation profile, turnover and pool allocation of low molecular weight (LMW) carbon compounds, using a selection of ^{14}C -labelled substrates. This method enabled the attribution of respired CO_2 to specific metabolic processes that facilitates the quantification and qualification of microbial mineralisation kinetics of substrates varying in structural complexity and recalcitrance. The kinetics of microbial ^{14}C - CO_2 evolution can be described using a first order exponential decay model (Box 4). The number of terms used in the exponential decay model can be used to explain how microbial kinetics relates time, substrate complexity and carbon pool allocation to, for example, rapidly cycled labile soil solution carbon, microbial structural carbon and recalcitrant extracellular soil organic carbon (Boddy, Hill, Farrar, & Jones, 2007; Kuzyakov & Demin, 1998; Nguyen & Guckert, 2001). Attribution of modelled carbon pool sizes and turnover rates to biological function are not only time and substrate dependent. Therefore, soil physical, biological and chemical interactions may be miss-attributed to biological function. Indeed, current knowledge and techniques available might not be enough to examine the interaction between discrete carbon pools (Glanville, Hill, Schnepf, Oburger, & Jones, 2016). Using the half-life of ^{14}C labelled carbon in soil solution we were able to examine the environmental gradient of the warming treatment across the climate change network and identified that temperature becomes rate limiting for microbial uptake of carbon from the soil solution pool at $<10.5^\circ\text{C}$. We also showed that experimentally manipulated warming simply speeds up the catabolic utilisation of labile LMW carbon in a predictable pattern (Box 4).

BOX 4 Exponential decay kinetics for ^{14}C evolution during microbial ^{14}C substrate mineralisation. The catabolic utilisation profile, turnover and pool allocation of low molecular weight (LMW) carbon substrates was determined in soils collected across the experimental network. Sixteen ^{14}C labelled amino acids and sugars varying in structural complexity and recalcitrance were used in a multiple substrate induced respiration (SIR) assay on soil. Evolved CO_2 was collected using NaOH traps and absorbed $^{14}\text{CO}_2$ was measured with a scintillation counter. (a) For substrate mineralisation a double-term first order decay model with an asymptote fitted the data with an r^2 of .99. Using the coefficients from the fitted equation, estimated half-life of the substrate in the first phase (soil solution uptake) was 30 hr, and in the second slower phase (microbial turnover) 408 hr. Approximately, 40% of the substrate was immobilised in the soil, 48.3% respired during the first phase, and 13.2% respired during the slower second phase. (b) Half-life of the substrate in the soil solution vs. mean annual temperature, in control (triangle) and warming (circle) treatments, data points are $M \pm SE$ ($n = 3$). Warming treatment and relative warmer site, simply increases the catabolic utilisation of labile LMW-carbon until a threshold mean annual temperature of 11.5°C



6 | CONCLUSIONS AND RECOMMENDATIONS

Stable isotope studies provide insightful information about carbon (and nitrogen) fluxes through the plant-soil-atmosphere continuum with minimal disturbance to the system. The value of the different isotope techniques depends on the specific research questions.

The analysis of the natural abundance of the heavy isotopes is only useful when isotope signatures in the different carbon or nitrogen pools are clearly distinct as a result of important fractionation processes. In practice, the application of this technique is limited to the study of the effects of changing abiotic conditions on processes that operate over a relative broad period of time, for instance to study changes in plant water use efficiency or N sources in a drought experiment over the growing season or different years. In contrast, the radiocarbon analysis ("bomb-C" technique) of instantaneous fluxes (soil or ecosystem respiration) has been proved to be very useful to evaluate whether different factors of climate change provoke the release of older carbon sources through soil or ecosystem respiration, a central question in relation to the proposed positive feedback between climate change and SOM decomposition. However, the progressive dilution of the bomb-C signature of the atmosphere will limit the application of this technique in the upcoming decades.

If the analysis of climate change effects on the allocation of plant carbon below-ground and cycling through the microbial community is the main research interest, then ^{13}C labelling approaches are the most appropriated tools. Coupled with the analysis of ^{13}C in specific microbial compounds, this technique constituted a remarkable advance in the study of processes occurring at the rhizosphere level. A significant challenge of the application of this technique is the achievement of sufficient ^{13}C enrichment in microbial biomass where the pools of background carbon in the studied compartments are high and hence dilute the ^{13}C signal. As an alternative, direct injection of ^{13}C -enriched substrates into soil can be applied to mimic rhizodeposition and to achieve a higher ^{13}C signal in the microbial community. Fumigation with FACE- CO_2 can be used to achieve a longer-term labelling of soil microbes and fauna.

The application of these techniques, however, is not exempt from difficulties and disadvantages. To keep a high caution and avoid mistakes, our collective recommendations for applying the described methods are provided and addressed in Table 1.

For in situ pulse-labelling studies there are major seasonality constraints to the distribution of the label throughout the ecosystem compartments, that is, the seasonality of carbon allocation below-ground due to changing plant activity, or the plant health status which determines the amount of tracer entering the system. Importantly, field plots previously "contaminated" by highly enriched isotope labelling should be considered potentially inoperable for further scientific isotope studies using the natural abundance approach. However, plant and soil structures remain largely undisturbed. In outlook for setting up a large-scale climate manipulation, areas that have not been previously used for experimental

work with isotopes should consequently be selected. In particular, the “bomb-C” method is very sensitive to the contamination of soil or plant samples with ^{14}C -enriched material, and thus its application should be limited to sites and facilities where no ^{14}C -labelling work has been conducted. Additionally, it should be noted that any history of fertilisation might also alter the natural isotope abundance of ecosystem compartments (in particular ^{15}N signatures), potentially confounding experimental results. The surroundings of a FACE experiment can be also “contaminated” by draft winds carrying the depleted label onto ambient plots.

ACKNOWLEDGEMENTS

This paper is a WP3 and WP15 of the INCREASE EU-infrastructure. Financial support by the European Commission (FTP7-ICT-2008-1, Grant Agreement no. 227628) is gratefully acknowledged. L.C.A., I.K.S., P.A. and C.B. received support from the VKR Foundation through the CLIMAITE project. M.E. and J.P. acknowledge support from the Spanish Government grant CGL2016-79835-P, the Catalan Government grant SGR2014- 274, and the European Research Council grant ERC-SyG-610028 IMBALANCE-P. G.K.-D. was supported by the Hungarian Scientific Research Fund (OTKA K112576) and by the János Bolyai Research Scholarship of the Hungarian Academy of Sciences. The ClimMani (ESSEM COST Action ES1308, Climate Change Manipulation Experiments in Terrestrial) is acknowledged. Authors state that they do not have any conflicts of interest to declare.

AUTHORS' CONTRIBUTIONS

All authors contributed to the collection of the data included as illustration of the methodologies. L.C.A., M.T.D., S.R. and A.R.S. wrote the manuscript. All authors contributed critically to the drafts and gave final approval for publication.

DATA ACCESSIBILITY

Datasets associated with this article are available through Dryad Digital Repository <https://doi.org/10.5061/dryad.mc460> (Andresen et al., 2018).

ORCID

Louise C. Andresen  <http://orcid.org/0000-0002-4890-889X>

Sabine Reinsch  <http://orcid.org/0000-0003-4649-0677>

REFERENCES

- Andresen, L. C., Dominguez, M. T., Reinsch, S., Smith, A., Schmidt, I. K., Ambus, P., ... Tietema, A. (2018). Data from: Isotopic methods for non-destructive assessment of carbon dynamics in shrublands under long-term climate change manipulation. *Dryad Digital Repository*, <https://doi.org/10.5061/dryad.mc460>
- Andresen, L. C., Dungait, J. A. J., Bol, R., Selsted, M. B., Ambus, P., & Michelsen, A. (2014). Bacteria and fungi respond differently to multifactorial climate change in a temperate heathland, Traced with ^{13}C -Glycine and FACE CO_2 . *PLoS ONE*, 9, e85070. <https://doi.org/10.1371/journal.pone.0085070>
- Andresen, L. C., Konestabo, H. S., Maraldo, K., Holmstrup, M., Ambus, P., Beier, C., & Michelsen, A. (2011). Organic matter flow in the food web at a temperate heath under multifactorial climate change. *Rapid Communications in Mass Spectrometry*, 25, 1485–1496. <https://doi.org/10.1002/rcm.4907>
- Andresen, L. C., Michelsen, A., Jonasson, S., Beier, C., & Ambus, P. (2009). Glycine uptake in heath plants and soil microbes responds to elevated temperature, CO_2 and drought. *Acta Oecologica*, 313, 283–295.
- Andresen, L. C., Müller, C., de Dato, G., Dukes, J. S., Emmett, B. A., Estiarte, M., ... Bilton, M. C. (2016). Shifting impacts of climate change: Long-term patterns of plant response to elevated CO_2 , drought, and warming across ecosystems. *Advances in Ecological Research*, 55, 437–473. <https://doi.org/10.1016/bs.aecr.2016.07.001>
- Balasoorya, W., Huygens, D., Deneff, K., Roobroeck, D., Verhoest, N. C., & Boeckx, P. (2013). Temporal variation of rhizodeposit-C assimilating microbial communities in a natural wetland. *Biology and Fertility of Soils*, 49, 333–341. <https://doi.org/10.1007/s00374-012-0729-7>
- Beier, C., Emmett, B. A., Gundersen, P., Tietema, A., Peñuelas, J., Estiarte, M., ... Williams, D. (2004). Novel approaches to study climate change effects on terrestrial ecosystems in the field: Drought and passive nighttime warming. *Ecosystems*, 7, 583–597.
- Beier, C., Emmett, B. A., Peñuelas, J., Schmidt, I. K., Tietema, A., Estiarte, M., ... Gorissen, A. (2008). Carbon and nitrogen cycles in European ecosystems respond differently to global warming. *Science of the Total Environment*, 407, 692–697. <https://doi.org/10.1016/j.scitotenv.2008.10.001>
- Boddy, E., Hill, P. W., Farrar, J. F., & Jones, D. L. (2007). Fast turnover of low molecular weight components of the dissolved organic carbon pool of temperate grassland field soils. *Soil Biology and Biochemistry*, 39, 827–835. <https://doi.org/10.1016/j.soilbio.2006.09.030>
- Bol, R., & Harkness, D. D. (1995). The use of zeolite molecular sieves for trapping low concentrations of CO_2 from environmental atmospheres. *Radiocarbon*, 37, 643–647. <https://doi.org/10.1017/S0033822200031155>
- Borken, W., Savage, K., Davidson, E. A., & Trumbore, S. E. (2006). Effects of experimental drought on soil respiration and radiocarbon efflux from a temperate forest soil. *Global Change Biology*, 12, 177–193. <https://doi.org/10.1111/j.1365-2486.2005.001058.x>
- Brand, W. A., & Coplen, T. B. (2014). Stable isotope deltas: Tiny, yet robust signatures in nature. *Isotopes in Environmental and Health Studies*, 48, 393–409.
- Brookes, P. C., Landman, A., Pruden, G., & Jenkinson, D. S. (1985). Chloroform fumigation and the release of soil nitrogen: A rapid direct extraction method to measure microbial biomass nitrogen in soil. *Soil Biology and Biochemistry*, 17, 837–842. [https://doi.org/10.1016/0038-0717\(85\)90144-0](https://doi.org/10.1016/0038-0717(85)90144-0)
- Brüggemann, N., Gessler, A., Kayler, Z., Keel, S. G., Badeck, F., Barthel, M., ... Bahn, M. (2011). Carbon allocation and carbon isotope fluxes in the plant-soil-atmosphere continuum: A review. *Biogeosciences*, 8, 3457–3489. <https://doi.org/10.5194/bg-8-3457-2011>
- Butler, J. L., Bottomley, P. J., Griffith, S. M., & Myrold, D. D. (2004). Distribution and turnover of recently fixed photosynthate in ryegrass rhizospheres. *Soil Biology and Biochemistry*, 36, 371–382. <https://doi.org/10.1016/j.soilbio.2003.10.011>
- Campbell, C. D., Chapman, S. J., Cameron, C. D., Davidson, M. S., & Potts, J. M. (2003). A rapid microtitre plate method to measure carbon dioxide evolved from carbon substrate amendments so as to determine the physiological profiles of soil microbial communities by using whole soil. *Applied and Environmental Microbiology*, 69, 3593–3599. <https://doi.org/10.1128/AEM.69.6.3593-3599.2003>
- Cernusak, L. A., Ubierna, N., Winter, K., Holtum, J. A. M., Marshall, J. D., & Farquhar, G. D. (2013). Environmental and physiological determinants of carbon isotope discrimination in terrestrial plants. *New Phytologist*, 200, 950–965. <https://doi.org/10.1111/nph.12423>

- Chapin, F. S., McFarland, J., David McGuire, A., Euskirchen, E. S., Ruess, R. W., & Kielland, K. (2009). The changing global carbon cycle: Linking plant-soil carbon dynamics to global consequences. *Journal of Ecology*, 97, 840–850.
- Cisneros-Dozal, L. M., Trumbore, S., & Hanson, P. J. (2006). Partitioning sources of soil-respired CO₂ and their seasonal variation using a unique radiocarbon tracer. *Global Change Biology*, 12, 194–204. <https://doi.org/10.1111/j.1365-2486.2005.001061.x>
- Degens, B. P., & Harris, J. A. (1997). Development of a physiological approach to measuring the catabolic diversity of soil microbial communities. *Soil Biology and Biochemistry*, 29, 1309–1320. [https://doi.org/10.1016/S0038-0717\(97\)00076-X](https://doi.org/10.1016/S0038-0717(97)00076-X)
- Denef, K., Roobroeck, D., Manimel Wadu, M. C. W., Lootens, P., & Boeckx, P. (2009). Microbial community composition and rhizodeposit-carbon assimilation in differently managed temperate grassland soils. *Soil Biology and Biochemistry*, 41, 144–153. <https://doi.org/10.1016/j.soilbio.2008.10.008>
- Denman, K. L., Brasseur, G., Chidthaisong, A., Ciais, P., Cox, P. M., Dickinson, R. E., ... Zhang, X. (2007). Couplings between changes in the climate system and biogeochemistry. In S. Solomon, D. Qin, M. Manning, M. Z. Chen, M. Marquis, K. B. Averyt, ... H. L. Miller (Eds.), *Climate change 2007: The physical science basis. Contribution of Working Group I to the Fourth Assessment Report of the Intergovernmental Panel on Climate Change* (pp. 500–587). Cambridge, UK: Cambridge University Press.
- Domínguez, M. T., Holthof, E., Smith, A. R., Koller, E., & Emmett, B. A. (2017). Contrasting response of summer soil respiration and enzyme activities to long-term warming and drought in a wet shrubland (NE Wales, UK). *Applied Soil Ecology*, 110, 151–155. <https://doi.org/10.1016/j.apsoil.2016.11.003>
- Domínguez, M. T., Sowerby, A., Smith, A., Robinson, D., Van Baarsel, S., Mills, R. E., ... Emmett, B. A. (2015). Sustained impact of drought on wet shrublands mediated by soil physical changes. *Biogeochemistry*, 122, 151–163. <https://doi.org/10.1007/s10533-014-0059-y>
- Dungait, J. A. J., Kemmitt, S. J., Michallon, L., Guo, S., Wen, Q., Brookes, P. C., & Evershed, R. P. (2013). The variable response of soil microorganisms to trace concentrations of low molecular weight organic substrates of increasing complexity. *Soil Biology & Biochemistry*, 64, 57–64. <https://doi.org/10.1016/j.soilbio.2013.03.036>
- Epron, D., Bahn, M., Derrien, D., Lattanzi, F. A., Pumpanen, J., Gessler, A., ... Buchmann, N. (2012). Pulse-labelling trees to study carbon allocation dynamics: A review of methods, current knowledge and future prospects. *Tree Physiology*, 32, 776–798. <https://doi.org/10.1093/treephys/tps057>
- Fagúndez, J. (2013). Heathlands confronting global change: Drivers of biodiversity loss from past to future scenarios. *Annals of Botany*, 111, 151–172. <https://doi.org/10.1093/aob/mcs257>
- Farquhar, G. D., & Richards, R. A. (1984). Isotopic composition of plant carbon correlates with water-use efficiency of wheat genotypes. *Australian Journal of Plant Physiology*, 11, 539–552. <https://doi.org/10.1071/PP9840539>
- Friedlingstein, P., Cox, P., Betts, R., Bopp, L., von Bloh, W., Brovkin, V., ... Zeng, N. (2006). Climate-carbon cycle feedback analysis: Results from the C4MIP model intercomparison. *Journal of Climate*, 19, 3337–3353. <https://doi.org/10.1175/JCLI3800.1>
- Fry, B. (2006). *Stable isotope ecology*. New York, NY: Springer. <https://doi.org/10.1007/0-387-33745-8>
- Fuchslueger, L., Bahn, M., Fritz, K., Hasibeder, R., & Richter, A. (2014). Experimental drought reduces the transfer of recently fixed plant carbon to soil microbes and alters the bacterial community composition in a mountain meadow. *New Phytologist*, 201, 916–927. <https://doi.org/10.1111/nph.12569>
- Garland, J. L., & Mills, A. L. (1991). Classification and characterisation of heterotrophic microbial communities on the basis of patterns of community-level sole-carbon-source utilisation. *Applied and Environmental Microbiology*, 57, 2351–2359.
- Glanville, H. C., Hill, P. W., Schnepf, A., Oburger, E., & Jones, D. L. (2016). Combined use of empirical data and mathematical modelling to better estimate the microbial turnover of isotopically labelled carbon substrates in soil. *Soil Biology and Biochemistry*, 94, 154–168. <https://doi.org/10.1016/j.soilbio.2015.11.016>
- Grayston, S. J., Vaughan, D., & Jones, D. (1997). Rhizosphere carbon flow in trees, in comparison with annual plants: The importance of root exudation and its impact on microbial activity and nutrient availability. *Applied Soil Ecology*, 5, 29–56. [https://doi.org/10.1016/S0929-1393\(96\)00126-6](https://doi.org/10.1016/S0929-1393(96)00126-6)
- Griffiths, R. I., Manefield, M., Ostle, N., McNamara, N., O'Donnell, A. G., Bailey, M. J., & Whiteley, A. S. (2004). ¹³C₂ pulse labelling of plants in tandem with stable isotope probing: Methodological considerations for examining microbial function in the rhizosphere. *Journal of Microbiological Methods*, 58, 119–129. <https://doi.org/10.1016/j.mimet.2004.03.011>
- Hardie, S. M. L., Garnett, M. H., Fallick, A. E., Rowland, A. P., & Ostle, N. J. (2005). Carbon dioxide capture using a zeolite molecular sieve sampling system for isotopic studies (¹³C and ¹⁴C) of respiration. *Radiocarbon*, 47, 441–451. <https://doi.org/10.1017/S0033822200035220>
- Högberg, M. N., Briones, M. J. I., Keel, S. G., Metcalfe, D. B., Campbell, C., Midwood, A. J., ... Högberg, P. (2010). Quantification of effects of season and nitrogen supply on tree below-ground carbon transfer to ectomycorrhizal fungi and other soil organisms in a boreal pine forest. *New Phytologist*, 187, 485–493. <https://doi.org/10.1111/j.1469-8137.2010.03274.x>
- Högberg, P., Högberg, M. N., Göttlicher, S. G., Betson, N. R., Keel, S. G., Metcalfe, D. B., ... Näsholm, T. (2008). High temporal resolution tracing of photosynthate carbon from the tree canopy to forest soil microorganisms. *New Phytologist*, 177, 220–228.
- Hovenden, M. J., Newton, P. C. D., & Wills, K. E. (2014). Seasonal not annual rainfall determines grassland biomass response to carbon dioxide. *Nature*, 511, 583–586. <https://doi.org/10.1038/nature13281>
- IPCC Intergovernmental Panel on Climate Change. (2013). Working group I contribution to the IPCC fifth assessment report (AR5), Climate Change 2013: The Physical Science Basis.
- Jin, V. L., & Evans, R. D. E. (2010). Microbial ¹³C utilisation patterns via stable isotope probing of phospholipid biomarkers in Mojave Desert soils exposed to ambient and elevated atmospheric CO₂. *Global Change Biology*, 16, 2334–2344. <https://doi.org/10.1111/j.1365-2486.2010.02207.x>
- Joergensen, R. G., & Mueller, T. (1996). The fumigation-extraction method to estimate soil microbial biomass: Calibration of the ken value. *Soil Biology and Biochemistry*, 28, 33–37. [https://doi.org/10.1016/0038-0717\(95\)00101-8](https://doi.org/10.1016/0038-0717(95)00101-8)
- Kimball, B. A. (2016). Crop responses to elevated CO₂ and interactions with H₂O, N, and temperature. *Current Opinion in Plant Biology*, 31, 36–43. <https://doi.org/10.1016/j.pbi.2016.03.006>
- Kröel-Dulay, G., Ransijn, J., Schmidt, I. K., Beier, C., De Angelis, P., de Dato, G., ... Peñuelas, J. (2015). Increased sensitivity to climate change in disturbed ecosystems. *Nature Communications*, 6, 6682. <https://doi.org/10.1038/ncomms7682>
- Kuzyakov, Y., & Demin, V. (1998). CO₂ efflux by rapid decomposition of low molecular organic substances in soils. *Sciences of Soils*, 3, 11–22. <https://doi.org/10.1007/s10112-998-0002-2>
- Kuzyakov, Y., & Gavrichkova, O. (2010). Time lag between photosynthesis and carbon dioxide efflux from soil: A review of mechanisms and controls. *Global Change Biology*, 16, 3386–3406. <https://doi.org/10.1111/j.1365-2486.2010.02179.x>
- Kuzyakov, Y., & Xu, X. (2013). Competition between roots and microorganisms for nitrogen: Mechanisms and ecological relevance. *New Phytologist*, 198, 656–669. <https://doi.org/10.1111/nph.12235>
- Lellei-Kovács, E., Botta-Dukat, Z., de Dato, G., Estiarte, M., Guidolotti, G., Kopittke, G. R., ... Schmidt, I. K. (2016). Temperature dependence of

- soil respiration modulated by thresholds in soil water availability across European shrubland ecosystems. *Ecosystems*, 19, 1460–1477. <https://doi.org/10.1007/s10021-016-0016-9>
- Lloret, F., Peñuelas, J., & Ogaya, R. (2004). Establishment of co-existing Mediterranean tree species under a varying soil moisture regime. *Journal of Vegetation Science*, 15, 237–244. <https://doi.org/10.1111/j.1654-1103.2004.tb02258.x>
- Michelsen, A., Quarmby, C., Sleep, D., & Jonasson, S. (1998). Vascular plant N-15 natural abundance in heath and forest tundra ecosystems is closely correlated with presence and type of mycorrhizal fungi in roots. *Oecologia*, 115, 406–418. <https://doi.org/10.1007/s004420050535>
- Mikkelsen, T. N., Beier, C., Jonasson, S., Holmstrup, M., Schmidt, I. K., Ambus, P., ... Sverdrup, H. (2008). Experimental design of multifactor climate change experiments with elevated CO₂, warming and drought: The CLIMATE project. *Functional Ecology*, 22, 185–195.
- Mueller, K. E., Blumenthal, D. M., Pendall, E., Carrillo, Y., Dijkstra, F. A., Williams, D. G., ... Morgan, J. A. (2016). Impacts of warming and elevated CO₂ on a semi-arid grassland are non-additive, shift with precipitation, and reverse over time. *Ecology Letters*, 19, 956–966. <https://doi.org/10.1111/ele.12634>
- Muhr, J. A. N., Borken, W., & Matzner, E. (2009). Effects of soil frost on soil respiration and its radiocarbon signature in a Norway spruce forest soil. *Global Change Biology*, 15, 782–793. <https://doi.org/10.1111/j.1365-2486.2008.01695.x>
- Näsholm, T., Kielland, K., & Ganeteg, U. (2009). Uptake of organic nitrogen by plants. *The New Phytologist*, 182, 31–48. <https://doi.org/10.1111/j.1469-8137.2008.02751.x>
- Nguyen, C., & Guckert, A. (2001). Short-term utilisation of ¹⁴C-[U]glucose by soil microorganisms in relation to carbon availability. *Soil Biology and Biochemistry*, 33, 53–60. [https://doi.org/10.1016/S0038-0717\(00\)00114-0](https://doi.org/10.1016/S0038-0717(00)00114-0)
- Ostle, N., Whiteley, A. S., Bailey, M. J., Sleep, D., Ineson, P., & Manefield, M. (2003). Active microbial RNA turnover in a grassland soil estimated using a ¹³CO₂ spike. *Soil Biology and Biochemistry*, 35, 877–885. [https://doi.org/10.1016/S0038-0717\(03\)00117-2](https://doi.org/10.1016/S0038-0717(03)00117-2)
- Peñuelas, J., Filella, I., Lloret, F., Piñol, J., & Siscart, D. (2000). Effects of a severe drought on water and nitrogen use by *Quercus ilex* and *Phillyrea latifolia*. *Biologia Plantarum*, 43, 47–53. <https://doi.org/10.1023/A:1026546828466>
- Phillips, D. A., Fox, T. C., & Six, J. (2006). Root exudation (net efflux of amino acids) may increase rhizodeposition under elevated CO₂. *Global Change Biology*, 12, 561–567. <https://doi.org/10.1111/j.1365-2486.2006.01100.x>
- Preston-Mafham, J., Boddy, L., & Randerson, P. F. (2002). Analysis of microbial community functional diversity using sole-carbon source utilisation profiles—a critique. *FEMS Microbiology Ecology*, 42, 1–14.
- Rangel-Castro, J. I., Killham, K., Ostle, N., Nicol, G. W., Anderson, I. C., Scrimgeour, C. M., ... Prosser, J. I. (2005). Stable isotope probing analysis of the influence of liming on root exudate utilisation by soil microorganisms. *Environmental Microbiology*, 7, 828–838. <https://doi.org/10.1111/j.1462-2920.2005.00756.x>
- Rasmussen, J., Sauheitl, L., Eriksen, J., & Kuzyakov, Y. (2010). Plant uptake of dual-labeled organic N biased by inorganic C uptake: Results of a triple labeling study. *Soil Biology & Biochemistry*, 42, 524–527. <https://doi.org/10.1016/j.soilbio.2009.11.032>
- Reich, P. B., Hobbie, S. E., & Lee, T. D. (2014). Plant growth enhancement by elevated CO₂ eliminated by joint water and nitrogen limitation. *Nature Geoscience*, 7, 920–924. <https://doi.org/10.1038/ngeo2284>
- Reinsch, S., & Ambus, P. (2013). In situ ¹³CO₂ pulse-labeling in a temperate heathland development of a mobile multi-plot field setup. *Rapid Communications in Mass Spectrometry*, 27, 1417–1428. <https://doi.org/10.1002/rcm.6584>
- Reinsch, S., Michelsen, A., Sárossy, Z., Egsgaard, H., Schmidt, I. K., Jakobsen, I., & Ambus, P. (2014). Short-term utilisation of carbon by the soil microbial community under future climatic conditions in a temperate heathland. *Soil Biology and Biochemistry*, 68, 9–19. <https://doi.org/10.1016/j.soilbio.2013.09.014>
- Rinnan, R., & Baaath, E. (2009). Differential utilization of carbon substrates by bacteria and fungi in tundra soil. *Applied and Environmental Microbiology*, 75, 3611–3620. <https://doi.org/10.1128/AEM.02865-08>
- Schuur, E. A., & Trumbore, S. E. (2006). Partitioning sources of soil respiration in boreal black spruce forest using radiocarbon. *Global Change Biology*, 12, 165–176. <https://doi.org/10.1111/j.1365-2486.2005.01066.x>
- Schuur, E. A. G., Vogel, J. G., Crummer, K. G., Lee, H., Sickman, J. O., & Osterkamp, T. E. (2009). The effect of permafrost thaw on old carbon release and net carbon exchange from tundra. *Nature*, 459, 556–559. <https://doi.org/10.1038/nature08031>
- Selsted, M. B., Ambus, P., Michelsen, A., van der Linden, L., Larsen, K. S., Pilegaard, K., ... Beier, C. (2011). Measurement of carbon dioxide fluxes in a free-air carbon dioxide enrichment experiment using the closed flux chamber technique. *Atmospheric Environment*, 45, 208–214. <https://doi.org/10.1016/j.atmosenv.2010.09.022>
- Sorensen, P. L., Michelsen, A., & Jonasson, S. (2008). Nitrogen uptake during one year in subarctic plant functional groups and in microbes after long-term warming and fertilization. *Ecosystems*, 11, 1223–1233. <https://doi.org/10.1007/s10021-008-9204-6>
- Subke, J. A., Vallack, H. M., Tord, M., Keel, S. G., Metcalfe, D. B., Högborg, P., & Ineson, P. (2009). Short-term dynamics of abiotic and biotic soil ¹³CO₂ effluxes after in situ ¹³CO₂ pulse-labelling of a boreal pine forest. *New Phytologist*, 183, 349–357. <https://doi.org/10.1111/j.1469-8137.2009.02883.x>
- Subke, J. A., Voke, N. R., Leronni, V., Garnett, M. H., & Ineson, P. (2011). Dynamics and pathways of autotrophic and heterotrophic soil CO₂ efflux revealed by forest girdling. *Journal of Ecology*, 99, 186–193. <https://doi.org/10.1111/j.1365-2745.2010.01740.x>
- Tcherkez, G., Mahe, A., & Hodges, M. (2011). ¹²C/¹³C fractionations in plant primary metabolism. *Trends in Plant Science*, 16, 499–506.
- Terrer, C., Vicca, S., Hungate, B. A., Phillips, R. P., & Prentice, I. C. (2016). Mycorrhizal association as a primary control of the CO₂ fertilization effect. *Science*, 353, 72–74. <https://doi.org/10.1126/science.aaf4610>
- Treonis, A. M., Ostle, N. J., Stott, A. W., Primrose, R., Grayston, S. J., & Ineson, P. (2004). Identification of groups of metabolically-active rhizosphere microorganisms by stable isotope probing of PLFAs. *Soil Biology and Biochemistry*, 36, 533–537. <https://doi.org/10.1016/j.soilbio.2003.10.015>
- Trumbore, S. E. (2009). Radiocarbon and soil carbon dynamics. *Annual Reviews on Earth Planetary Sciences*, 37, 47–66. <https://doi.org/10.1146/annurev.earth.36.031207.124300>
- Watzinger, A. (2015). Microbial phospholipid biomarkers and stable isotope methods help reveal soil functions. *Soil Biology and Biochemistry*, 86, 98–107. <https://doi.org/10.1016/j.soilbio.2015.03.019>
- Wessel, W. W., Tietema, A., Beier, C., Emmett, B. A., Peñuelas, J., & Riis-Nielsen, T. (2004). A qualitative ecosystem assessment for different shrublands in western Europe under impact of climate change. *Ecosystems*, 7, 662–671. <https://doi.org/10.1007/s10021-004-0219-3>
- Zak, D. R., Pregitzer, K. S., King, J. S., & Holmes, W. E. (2000). Elevated atmospheric CO₂, fine roots and the response of soil micro-organisms: A review and hypothesis. *New Phytologist*, 147, 201–222. <https://doi.org/10.1046/j.1469-8137.2000.00687.x>

How to cite this article: Andresen LC, Domínguez MT, Reinsch S, et al. Isotopic methods for non-destructive assessment of carbon dynamics in shrublands under long-term climate change manipulation. *Methods Ecol Evol*. 2018;9:866–880. <https://doi.org/10.1111/2041-210X.12963>