

Holocene Land Cover and Population Dynamics in Southern France

Journal:	<i>The Holocene</i>
Manuscript ID	HOL-18-0137.R1
Manuscript Type:	Paper
Date Submitted by the Author:	04-Jan-2019
Complete List of Authors:	Berger, Jean-François; UMR 5600, CNRS Shennan, Stephen; UCL, Institute of Archaeology Woodbridge, Jessie; University of Plymouth, Geography Palmisano, Alessio; University College London (UCL), Institute of Archaeology; Mazier, Florence; Toulouse-Le Mirail University, GEODE UMR 5602 Nuninger, Laure; Université Franche-Comte, Laboratoire Chrono-Environnement Guillon, Sebastien; Independent researcher Doyen, Elise; UMR 6249 Laboratoire Chrono-Environnement, University of Franche-Comté BEGEOT, Carole; UMR 6249 Laboratoire Chrono-Environnement, University of Franche-Comté Andrieu-Ponel, Valérie; Institut Méditerranéen de Biodiversité et d'Écologie Marine et Continentale (IMBE) Azuara, Julien; Museum National d'Histoire Naturelle, Homme, Nature et Sociétés Bevan, Andrew; University College London (UCL), Institute of Archaeology Fyfe, Ralph; University of Plymouth, Roberts, C. Neil; University of Plymouth, Geography
Keywords:	Holocene, Southern France, radiocarbon summed probability distribution, population proxy, pollen, land cover, human impact, population dynamics, site count, aoristic weights
Abstract:	This paper describes long-term changes in human population and vegetation cover in southern France, using summed radiocarbon probability distributions and site count data as population proxies and information from fossil pollen cores as a proxy for past land cover. Southern France is particularly well-suited to this type of study as a result of previous programmes of intensive survey work and excavation in advance of large-scale construction. These make it possible to calibrate the larger scale occupation patterns in the light of the visibility issues created by the burial of archaeological sites beneath alluvial sediments. For purposes of analysis the region was divided into three biogeographical zones, going from the Mediterranean coast to the middle Rhône valley. All the different population proxies in a given zone show broadly similar patterns of fluctuation, though with varying levels of

1
2
3
4
5
6
7
8
9
10
11
12
13
14
15
16
17
18
19
20
21
22
23
24
25
26
27
28
29
30
31
32
33
34
35
36
37
38
39
40
41
42
43
44
45
46
47
48
49
50
51
52
53
54
55
56
57
58
59
60

	<p>resolution. The long-term patterns in the different zones all show significant differences from the overall regional pattern but this is especially the case for the non-mediterranean middle Rhône area. Cluster analysis of pollen samples has been carried out to identify the main regional land cover types through the Holocene, which are increasingly dominated by open types over time. A variety of other pollen indicators show evidence of increasing human impact through time. Measures of human impact correlate strongly with the population proxies. A series of thresholds are identified in the population-human impact trajectory that are related to other changes in the cultural sequence. The lack of independent climate data for the region means that its impact cannot currently be assessed with confidence. However, for the later periods it is clear that the incorporation of southern France into larger regional systems played a major role in accounting for changes in land cover and settlement.</p>



A Introduction

In the Mediterranean region, separating the impact of human activity from climate remains a challenging task (Roberts et al., 2011), but all the more important because over recent millennia Mediterranean environments have become very vulnerable to the emergence of new risks (Van der Leeuw et al. 2005, Leveau 2007). Identifying the rhythms, intensity and scales of the processes involved is essential for understanding the causes of change in any socio-environmental system and their impacts. In order to do so it is necessary to adopt a broad scale of spatial and temporal analysis focusing on key factors including demography, subsistence techniques, vegetation and soil erosion. This paper addresses long-term trends in population and land cover in southern France, one of the main settlement areas in the western Mediterranean.

Table I about here

In this region, the impacts of the first Neolithisation in the early to mid 8th millennium BP (see table I for cultural chronology) are still largely considered local and negligible (Richard 2004). A first threshold is envisaged in the Middle Neolithic, a millennium later, with the establishment of settlement networks extending from the plains to the mountains (Beeching 1991), the first pastoral systems associated with the widespread use of cave-sheepfolds (Brochier et al. 1999) and the development of true oak parklands (Delhon et al., 2008). From the Late Neolithic (5000-4500 Cal yr BP), the spread of sclerophyllous taxa and loss of forest cover could result mainly from anthropogenic impacts on vegetation (Vernet and Thiébault 1987, Pons et Quezel 1998), although a climatic explanation of the same phenomena has also been offered (Jalut et al., 2000, 2009). The end of the Iron Age and the Roman (Gallia Narbonensis) and Medieval periods see major human modification of environments and landscapes.

Central to analysing the causal links and processes behind these developments is the reconstruction of human population dynamics at different scales – Mediterranean France as a whole and its different

1
2
3 biogeographic sub-regions – in order to compare the results with independent data on land cover. A
4 long-established approach to modelling population dynamics in a diachronic perspective is to use the
5 counts of archaeological sites dated to established typo-chronological phases, but for much if not most
6 of Holocene prehistory these phases are not short enough to provide a useful degree of chronological
7 resolution and the methods implicitly assume that changes occur only at phase boundaries. In recent
8 years, as the number of radiocarbon dates available has increased, it has been shown that summed
9 radiocarbon date probabilities (SPD) provide a useful additional proxy for fluctuations in human
10 population levels, at a much higher level of resolution for most of prehistory and without having to be
11 concerned with the impact of artificial typo-chronological phase boundaries (Shennan et al. 2013,
12 Timpson et al. 2014). However, it has also been demonstrated that at some point in the 1st millennium
13 BCE, depending on the region, this proxy loses its usefulness as researchers switch to increasing use
14 of typo-chronological dating (which is now much more fine-grained than earlier, e.g. Palmisano et al.
15 2017).

16
17
18 Southern France provides an exceptionally good case-study region for documenting long-term
19 population trends. Large numbers of radiocarbon dates are available and regional reports provide a
20 strong set of site count data (see Supplemental material 1 for a full list of sources) for quantitative
21 comparison. Moreover, these regional data can also be compared with the results of previous micro-
22 regional studies that have made southern France one of the best-documented regions of the
23 Mediterranean for quantitative archaeological analysis (Archeomedes and Archaedyn surveys, Van
24 der Leeuw et al. 2003, Favory et al. 1999, Gandini et al. 2012). It is also one in which taphonomic
25 processes have been extensively documented by numerous rescue archaeology operations over 30
26 years in the Middle Rhône Valley (MRV; for example, the Mediterranean TGV express train line,
27 pipelines, urban expansion projects), which can be used to estimate the number of sites invisible on
28 the surface (Verhagen and Berger 2001, Berger 2011, 2015), though there are no large diachronic
29 quantitative syntheses at the scale of southern France that go back beyond the last three millennia (see
30 below).

1
2
3 Southern France also possesses a large number of pollen records for reconstructing past land-cover.
4
5 Although several reviews have tried to decipher the causes of long-term Mediterranean vegetation
6
7 change, there is still no clear understanding of the respective role of past human activities and climate
8
9 in vegetation change (de Beaulieu et al 2005, Jalut et al 2000, 2009, Azuara et al. 2015, 2018). This is
10
11 partly due i) to the chronology (age-depth models), which is still a limiting factor when comparing
12
13 several pollen records, ii) to the definition of similarities and differences in vegetation patterns when
14
15 exploring multiple pollen records, and iii) to the difficulties of relating them to independent climatic
16
17 and population proxies. Recently, pollen sequences and their chronologies from the European Pollen
18
19 Database have been reviewed and corrected (Fyfe et al. 2009) in order to compare those sequences.
20
21 New use of cluster analysis has also offered useful results for exploring past vegetation change (Fyfe
22
23 et al. 2018, Woodbridge et al. in press).
24
25

26
27
28 The aim of this paper is to remedy the lack of synthetic quantitative synthetic land-cover and
29
30 population studies and to test how far regional vegetation changes and ecological transformations
31
32 within southern France can be explained by archaeologically-derived records of demographic change
33
34 (10000-500 BP), while evaluating the validity of the regional archaeological data through comparison
35
36 with the results of the previous micro-regional studies. Regional trends in vegetation through the
37
38 Holocene are derived from synthesis of multiple pollen sequences.
39
40
41
42

43 **A The study area**

44
45
46

47 The area of southern France examined here, the “French Mediterranean South”, covers nearly
48
49 100,000 km² and is located at the north-western edge of the Mediterranean morpho- and bioclimatic
50
51 system (latitude 42.5° to 46° N., Fig. 1), just south of a zone characterised by mid-European and
52
53 Alpine climatic influences. As a basis for our spatial and chronological analysis of the archaeological
54
55 and pollen records we have divided it into three homogeneous biogeographical zones (BGZ), which
56
57 correspond to a topographic, climatic and latitudinal gradient along the Rhône corridor and its
58
59 tributaries as far as its confluence with the River Saône in Lyon, and in the western part along the
60

1
2
3 main river basins that run from the southern Massif Central and eastern Pyrenees. They are the coastal
4 and hinterland eu/meso-mediterranean lowlands (BGZ I); the supra-mediterranean uplands (BGZ II);
5 and the middle Rhône valley and low Dauphiné (BGZ III (Fig. 1).
6
7
8
9

10
11 **Fig 1 about here**
12
13

14
15 BGZ I covers the southern coastal band from Nice to Perpignan and its hinterland up to 500/600m in
16 altitude (almost 40,000 km²). The regional climate is characterized by a strong summer drought close
17 to the coast and in lowland Provence, which weakens as you move northwards up the Rhône Valley or
18 into the mountainous foothills (BGZ II and III). Seasonal rainfall maxima are in the autumn, with a
19 rainy season from September to April and little summer rainfall. The intensity of the rains and the
20 irregularity of precipitation from one year to the next result in rivers with strongly contrasted regimes.
21 High river flows occur during September and October and again in spring in the river Rhône, as the
22 snow melts in the Alps.
23
24
25
26
27
28
29
30
31
32
33
34

35 BGZ II corresponds to the supra-mediterranean to mountain-mediterranean zones, which follow a
36 continuous calcareous pre-alpine zone (c.47,000 km²) associated with karstic relief in the eastern part
37 of the study area, from 500 to 2000m in altitude. These areas have many caves and rockshelters
38 conducive to pre- and proto-historic settlement. They are also favourable to the concentration of
39 fortified sites on the edges of plateaus or on barred spurs. In the western part of the region
40 (Languedoc), the BGZ II band is much narrower because the transition from the high plateaux of the
41 southern part of the Massif Central takes place very abruptly. Further south this band is associated
42 with the foothills of the eastern Pyrenees. This zone is defined quite well to the north by the area
43 where olive cultivation becomes impossible because of the cold, and often by the disappearance of the
44 summer rainfall lull.
45
46
47
48
49
50
51
52
53
54
55
56
57

58 BGZ III corresponds to the middle basin of the Rhône (c. 13,000 km²), between its exit from the
59 southern Jura and the northern Alps where the Guiers and Ain rivers converge, and its confluence
60

1
2
3 with the basins of the Western calcareous pre-Alps (Vercors, Diois), where the Rhône is joined by the
4 Isère and the Drôme rivers (Fig.1). In this zone of climatic convergence (Mediterranean, oceanic and
5 alpine), the alluvial plains, Quaternary terraces and moraines, and many lakes and marshes resulting
6 from glacial morphogenesis, predominate in the vast molassic sedimentary triangle of the low
7 Dauphiné, forming an extensive detrital tertiary fan. This zone presents landscapes of hills, plateaus
8 and active or dead alluvial valleys, the altitude of which does not exceed 600m.
9
10
11
12
13
14
15
16
17

18 From a hydrographic point of view, these three BGZs are crossed by the river Rhône, the backbone of
19 the study area. This axis has had a strong structural effect on settlement and interaction throughout
20 history, encouraging penetrations of people from the Mediterranean coast and north-south cultural
21 exchanges with Central Europe.
22
23
24
25
26
27
28
29

30 **A Methodology and materials**

31 **B Archaeological data and demographic indicators**

32 *C The southern France region dataset*

33
34
35
36
37
38
39
40
41
42
43 Archaeological datasets from southern France (sites and radiocarbon dates) have been collected as
44 exhaustively as possible, either from extant online databases or manually input from print and
45 electronic publications, in order to create two georeferenced databases, one for radiocarbon dates and
46 one for archaeological sites (see Supplemental material 1 for a full list of sources). These are taken as
47 the basis for demographic proxies that characterise major relative population trends at a regional
48 scale.
49
50
51
52
53
54
55
56
57

58 A total of 3,507 uncalibrated radiocarbon dates from 1056 sites have been collected for southern
59 France. All of these radiocarbon dates are from archaeological contexts, with the majority being
60

1
2
3 samples of bone, charcoal and wood. Radiocarbon dates exhibiting poorly understood reservoir
4 effects such as marine samples from shells have been removed (and are not part of the above total).
5
6 A potential bias from the oversampling of specific sites or site-phases for radiocarbon was reduced by
7
8 aggregating uncalibrated radiocarbon dates from the same site that are within 100 years of each other
9
10 and dividing by the number of dates that fall in this 'bin' (Timpson *et al.* 2014). As a result our 3,507
11
12 radiocarbon dates have been grouped into 2490 bins. The probabilities from each calibrated date are
13
14 combined to produce a summed probability distribution (SPD). Unnormalised dates were used prior
15
16 to summation and calibrated via IntCal13 curve in order to avoid narrow artificial peaks in SPDs due
17
18 to the effect of steepening portions of the radiocarbon calibration curve when normalized calibrated
19
20 dates are used (Reimer *et al.* 2013; see previous applications in Palmisano *et al.* 2017; Bevan *et al.*
21
22 2017). A logistic null model, corresponding to the assumption that population would have gradually
23
24 increased until a carrying capacity was reached, was fitted to the observed SPD in order to produce a
25
26 95% critical envelope (composed of 1,000 random SPDs) and statistically tested to establish whether
27
28 the observed pattern significantly departs from this model (see Timpson *et al.* 2014, 555-556; Bevan
29
30 *et al.* 2017; and for the specific implementation Crema and Bevan 2018: 'modelTest'). Radiocarbon
31
32 SPDs were also created for each of the three biogeographic zones described above and permutation
33
34 tests (Crema *et al.* 2016, Roberts *et al.* 2018) carried out to establish whether they were significantly
35
36 different from the overall regional pattern. These data were also used to create a cave/rock shelter use
37
38 index, representing the proportion of site-phases at a given time made up of these site types. This
39
40 provides a basis for discussing the intensity of use of karstic environments.
41
42
43
44
45
46

47
48 Archaeological site data have been collected via a comprehensive review, standardisation, and
49
50 synthesis of settlement data from 45 reports (based on the *Bilan Scientifique Regional*) of
51
52 archaeological investigations (excavations and surveys) carried out in the regions of Languedoc-
53
54 Roussillon, Provence-Alpes-Côte d'Azur, and Rhône-Alpes. In this project we collected data from the
55
56 reports published between 2001 and 2015 (see Supplementary material 1 for a full list of references).
57
58 The *fiches de synthèse* of the Archéologie du TGV Méditerranée have been added (Collectif 2002a-c)
59
60 for the Tricastin and Valdain areas (see below). Although this approach does not provide a complete

1
2
3 census of all archaeological settlements in southeastern France, at this scale it provides a reliable sub-
4 sample of the entire population both in terms of chronological and spatial coverage. Settlement data
5 were recorded as geo-referenced points per cultural period, which have been defined in terms of
6
7 calendar dates, though the chronological information given in the bilans is often fairly imprecise. By
8
9 recording both the stated cultural period and approximate estimated start and end dates in calendar
10
11 years, we have sought nevertheless to provide maximum comparative potential across archaeological
12
13 sites. One major caveat is that the estimated site surface area per cultural period was not consistently
14
15 available and therefore not recorded for all the sites stored in the two databases used here. As a
16
17 consequence, in this paper we use raw site counts, and derivatives of these, as a proxy for population.
18
19 A total of 2,944 archaeological sites were divided into 4,974 occupation phases (most sites were
20
21 occupied in multiple periods). The main socio-cultural entities of southern France discussed in this
22
23 paper are given in table I, incorporating ranges of uncertainty between archaeological cultures or from
24
25 one subregion to another.
26
27
28
29
30
31

32
33 Site counts have been calculated for each of a series of 200-year time slices, starting at 10,000 Cal Yr
34
35 BP. Since cultural periods vary in their length according to the dating precision of archaeological
36
37 artefacts, and the earlier ones tend to be longer, we have used aoristic analysis to deal with the
38
39 temporal uncertainty of occupation periods and generated aoristic weights (AW; for a more detailed
40
41 explanation of the methodology see Crema *et al.* 2010, 1118-1121; Crema 2012, 446-448; Palmisano
42
43 *et al.* 2017, 63-65). In addition, to mitigate the discrepancy between wide typo-chronological ranges
44
45 and shorter likely site durations, we applied Monte Carlo methods to generate randomised start dates
46
47 (RSD) of occupation phases for sites with low-resolution information, assuming a mean occupation
48
49 length of 200 years within any given cultural period (cf. Crema 2012, 450-451; Palmisano *et al.* 2017,
50
51 63-64). The resulting probabilistic distributions of site frequencies through time, based on the aoristic
52
53 sums and Monte Carlo simulations, help to refine the raw site frequency data.
54
55
56
57

58 *C Micro-regional studies*

59
60

1
2
3 In addition to the radiocarbon and site-count data collected for the region as a whole, this paper also
4 makes use of further micro-regional datasets collected by earlier projects within the region. These data
5 provide a basis for calibrating and evaluating the broader regional patterns.
6
7
8
9

10
11 The “Tricastin-Valdain” micro-regional zone (TVZ) at the interface between BGZ I and II (fig. 1:
12 TVZ settlement survey zone), is probably the best archaeologically-documented area from the
13 Neolithic to Medieval period in Southern France. Over the past 30 years, a number of archaeological
14 surveys have been carried out here, based on field-walking projects that began in the 1980s and
15 increased in the 1990s under the combined action of CNRS (ATP “First farmers”, GDR 954),
16 Ministry of Culture (H 11 Tricastin), and European (“Archaeomedes”, van der Leeuw et al. 2001)
17 projects. In addition, a programme of mechanical trenching was carried out as part of the
18 Mediterranean TGV (the high-speed railway) rescue archaeological project along a 120-km strip on
19 the left bank of the Rhône (INRAP, Gutherz and Odier 2001), as well as a 50-km strip in the Valdain
20 basin in advance of a pipeline (Berger 2015; fig 1: TVZ zone). This dataset provides a basis for
21 evaluating the taphonomic impact of hydrogeomorphological processes on the initial relative
22 population estimates derived from the radiocarbon and site data described above because it is derived
23 from a dataset randomly created during the excavation of linear mechanical trenches across the
24 superficial deposits of the different landscape units.
25
26
27
28
29
30
31
32
33
34
35
36
37
38
39
40
41
42

43 For later periods (800 BCE-1600 CE) it is also possible to compare results from the overall dataset
44 with those obtained by the Archaeomedes (1992-1996) and Archaeodyn (2005-2011) projects, which
45 provide a micro-regional database based primarily on systematic field-walking survey from three
46 areas, that again began in the 1980s – 1990s (PCR “Land Use in Narbonnaise during Roman times”
47 and GDR 954, see Favory et al. 2012) : eastern Languedoc, Ardèche-Tricastin and Etang de Berre &
48 Chaînon de Ia Nerthe (see fig 1: Archaeomedes Archaeodyn survey areas). Only settlement remains
49 were taken into account but, in addition to settlement-count, settlement-area information, based on the
50 surface distribution of sherds and building material, was also available from these surveys, which
51 therefore offer important additional information that other datasets do not. Furthermore, advanced
52
53
54
55
56
57
58
59
60

1
2
3 analysis and classification of the settlements based on various criteria, allow discussion in more detail
4
5 of population inferences for the last millennium BCE (Archaeomedes 1998, Van der Leeuw et al.
6
7 2003, Nuninger et al. 2012) and the factors affecting them, such as the increasing impact of
8
9 Mediterranean trade. Typo-chronological information provides a 100 year chronological resolution.
10
11 These datasets, from areas between 100 and 1200 km² contain 27 to 1061 settlement entities with 133
12
13 to 3121 occupations for these later periods.
14
15
16
17

18 **B Pollen**

21 *C Modern and fossil pollen datasets*

22
23
24
25
26 Within a Mediterranean-wide synthesis, pollen count data from the European modern (Davis et al.,
27
28 2013) and fossil pollen databases (EPD version: Oct. 2017; Leydet, 2007-2017) were combined with
29
30 additional fossil records provided by a network of data contributors (e.g. Andrieu-Ponel et al., 2000 a
31
32 & b) to compile a dataset spanning the whole Mediterranean. Descriptions of the methodological
33
34 approaches developed and applied to these pollen datasets are provided in Woodbridge et al. (2018, in
35
36 press) and Fyfe et al. (2018) along with detailed information on the pollen taxonomic harmonisation
37
38 applied to allow comparisons between records. Pollen sequences with reliable chronologies (Giesecke
39
40 et al., 2013) were selected for analysis and new sediment core chronologies were constructed for
41
42 additional records using the 'bacon' R package (Blaauw & Christen, 2011). The pollen count data
43
44 from each record were summed into 200-year time windows and analyses were applied to the entire
45
46 Mediterranean region (1798 modern and 252 fossil records amounting to 6554 fossil sample time
47
48 windows and modern surface samples) in order to identify key vegetation types. Analyses for a sub-
49
50 set of 48 fossil records and 87 modern pollen sites are presented in this paper for southern France (see
51
52 table II), which is split into the three biogeographic zones described above (coastal Mediterranean: 13
53
54 fossil and 13 modern sites, supra-Mediterranean: 20 fossil and 68 modern sites, and middle Rhône: 12
55
56 fossil and 6 modern sites).
57
58
59
60

Table II about here*C Data analysis*

An unsupervised data-driven approach was applied to the entire Mediterranean pollen dataset to assign pollen samples, amalgamated into 200 year time windows, to vegetation cluster groups based on the similarity of their taxa assemblages, using Ward's hierarchical agglomerative clustering method (Ward, 1963) within the 'rioja' R package (Juggins, 2015) (see Woodbridge et al., (in press) and Fyfe et al. (2018) for a detailed description of the cluster analysis approach developed). A phytosociological classification approach (Perez et al. 2015) was used to identify the frequent and abundant pollen taxa within each cluster group based on their median and interquartile range (IQR). Interpretive name descriptors were given to each vegetation cluster using phytosociological classification tables together with comparisons with other classification systems, land cover types defined by Corine remotely-sensed land cover maps (European Environment Agency, 2016) and the results of previous studies (see Woodbridge et al., in press). Pollen indicator groups were also used to summarise key changes in the datasets. This included calculating the average arboreal pollen sum (%AP) ; a sum of tree crop indicators OJC (*Olea*, *Juglans*, *Castanea*) (Mercuri et al., 2013a) (also combined with *Vitis*, OJCV) ; calculation of an anthropogenic pollen index (API: *Artemisia*, *Centaurea*, Cichorioideae and *Plantago*, cereals, *Urtica* and *Trifolium* type) (Mercuri et al., 2013b); a sum of pastoral indicators (Asteroideae, Cichorioideae, *Cirsium*-type, *Galium*-type, Ranunculaceae and *Potentilla*-type pollen) (adapted from Mazier et al., 2006); and a sum of Regional Human Activity Pollen Indicators, RHAPI (*Secale*, *Cerealia* undiff., Chenopodiaceae, *Artemisia*, *Urtica dioica*, *Plantago lanceolata*, *Plantago media/major*, *Rumex* spp., *Rumex obtusifolius* type and *Rumex acetosa/acetosella*) (Mazier et al. 2006, 2009). Vegetation cluster group changes were calculated as an average for all sites in the southern France case study region and each sub-region and plotted stratigraphically.

For the specific purpose of comparison with the pollen, the demographic proxies (SPD of radiocarbon dates, raw count, aoristic sum, and randomised start date) were further binned into 200-year time slices

1
2
3 to match the time windows used in the analysis of pollen sequences. A Spearman's Rank correlation
4 matrix was calculated between the values of the human impact pollen indicators and the values of the
5 archaeological demographic proxies in each time slice for the period 10,000 to 600 Cal yr BP. The
6 rank correlations between the SPD of radiocarbon dates and all other proxies have been calculated for a
7 shorter time span, between 10000 and 2400 Cal Yr BP, because after this time the radiocarbon dates
8 lose their value as a demographic proxy, as discussed above.
9
10
11
12
13
14
15
16
17

18 **A Results**

21 **B Demographic trends from archaeological data**

24 *C The « Tricastin-Valdain » test dataset (TVZ)*

25
26
27
28
29
30 As described above, this intensively investigated area crossing BGZ I and II provides a basis for
31 assessing the broader regional results. Fig. 2 shows the different archaeological indicators on the same
32 temporal axis (SPD, buried sites and caves-rock shelters, raw count as site density per 50 years up to
33 the Iron Age 2 phase). The SPD data have been excluded from this analysis after 2400 Cal Yr BP,
34 when the raw site count (RC) data become the more reliable indicator of human population variation.
35 A first increase is detectable around 8700 Cal Yr BP. A second sharper increase is identified c. 7450
36 Cal Yr BP, with two distinct maxima towards 7000-6700 and 6350-6200 Cal Yr BP. This period
37 corresponds to the Early and Middle Neolithic (EMNT). A well-marked decrease is clearly identified
38 in the SPD curves of surface and buried sites centred on 6600-6500 Cal Yr BP (fig. 2a, EMNT) and a
39 second, less sharp, around 6000-5900 Cal Yr BP. A third increase is detectable jointly by the SPD and
40 the RC analysis from 5900 Cal Yr BP with a double maximum around 5750 and 5500/5400. A
41 decrease in the number of sites characterizes the end of this period. A fourth increase towards 5050
42 Cal Yr BP is seen clearly in the SPD curves of both surface and buried sites, indicating a shift into the
43 floodplains. The fifth increase is particularly marked and common to all settlement markers from
44 4500 Cal Yr BP. The set of curves then fluctuates regularly up to 3300 Cal Yr BP, with maxima
45
46
47
48
49
50
51
52
53
54
55
56
57
58
59
60

1
2
3 (4100-3950 and 3700-3600 Cal Yr BP) and minima centred on 3800 then 3500-3400 Cal Yr BP, the
4
5 latter a major decline marked by all indicators. The seventh increase corresponds to the entire Late
6
7 Bronze Age (LBA, 3300-2700 Cal Yr BP) and shows a strong correlation between all archaeological
8
9 markers. The very large number of buried sites in the floodplain suggests that surface sites under-
10
11 represent the number of sites for this period. Furthermore, the density of sites per 50 year period in
12
13 this phase is at least twice as high as in the late Neolithic, a pattern broadly matched by the buried
14
15 site SPD, suggesting that the surface site SPD peak in this period is exaggerated compared to the
16
17 LBA. The beginning of the Iron Age (2700-2600 Cal Yr BP) corresponds to a short, very marked fall,
18
19 which all the settlement markers record simultaneously. The end of the Iron I and the beginning of the
20
21 Iron II period show a new increase in the density of human settlement, concentrated in the hills,
22
23 plateaux and floodplains. The number of sites identified is then lower than during the LBA, but the
24
25 size of the hilltop sites (*oppida*) increases significantly, which our data do not take into account. From
26
27 the Iron Age II, the raw count data is the only variable used to describe the Tricastin-Valdain
28
29 settlement dynamic. A maximum centred on the high Roman Empire (150 sites) is followed by a slow
30
31 decline until the 5th century CE (50 sites) and then a further abrupt decline until the 7th century CE
32
33 (12 sites); a second maximum is centred on the High Middle Ages (12th-13th centuries CE; between
34
35 80-90 sites), with growth starting in the 10th century.
36
37
38
39
40

41 **Fig 2 about here**
42
43
44

45 The representativeness of the radiocarbon pattern can be assessed by means of a permutation test to
46
47 see if the SPDs for surface and buried sites in the TVZ deviate from the 95% critical interval
48
49 generated by permuting subsets of all the TVZ dates (fig 2b-c). The difference is not significant
50
51 ($p=0.153$) though it is clear that c.3300-2700 Cal Yr BP the buried site line is at the very top of the
52
53 95% interval (and conversely for the surface sites) and would indeed be significantly different if a
54
55 larger sample of buried site dates maintained the same pattern, because the 95% interval would be
56
57 narrower. However, it seems that both surface and buried sites describe similar demographic trends
58
59 throughout the Holocene.
60

C The three biogeographic zones

Fig 3 shows a logistic model fitted to the SPD data from southern France as a whole. The pattern is significantly different from that described by this logistic model, with positive departures between 10,000 and 8,500, 5000 and 4000 and between 1500 and 1000 Cal Yr BP, corresponding to periods when population was higher than expected, while there are shorter-lived negative departures indicating population declines, at c. 5500, 3500, 3000 and 2500 Cal Yr BP. Despite the overall consistency of shape in each of the regional time series, permutation tests (Fig 4a-c) also demonstrate that all three regions differ significantly from the overall pattern, implying certain localised dynamics at least until the 1st millennium BCE. BGZ I is the closest, with a positive departure between 5000 and 4000 Cal Yr BP. BGZ III, however, is almost completely different from the overall picture, being significantly lower until 4000 BP and significantly higher from 3500 Cal Yr BP. BGZ II shows a major negative departure in the later part of the period but by this time the radiocarbon data no longer give a valid picture of the trends. Fig 5 shows the radiocarbon and site-derived proxies (raw count, aoristic weight, randomised start date) together (the values of each proxy have been normalised on a scale between 0 and 1 in order to make them comparable) and it is apparent that from c. 2300 Cal Yr BP the site-derived proxies show an order of magnitude increase on what has gone before, which is not matched in the SPD, reflecting the much greater use of typo-chronological dating and increasing settlement density in the late Iron Age and Roman period.

Fig 3 about here

It is possible to obtain a general impression of the representativeness of the radiocarbon pattern for BGZ I and II by comparing it with the SPD for the Tricastin-Valdain area (the hatched area on the map, fig 1), by means of a permutation test, as above, though it is important to note that the TVZ covers only a relatively small part of the two zones and thus cannot be regarded as truly representative of the area as a whole. Nevertheless, with this caveat in mind, it can be seen that the TVZ curve generally falls within

1
2
3 the critical envelope for the combined zones (fig 4d). Discounting the difference in the last part of the
4 sequence when radiocarbon is no longer the preferred dating method, the only area of marked
5 difference occurs around 3000 Cal Yr BP, when it appears that Late Bronze Age sites are under-
6 represented, presumably because more of them occur in floodplains, as we saw in the TVZ, and are less
7 likely to be recovered in normal archaeological investigations.
8
9
10
11
12
13
14
15

16 **Fig 4 about here**

17
18
19
20 From the Early Holocene at ~10000 Cal Yr BP there is a steady increase of population until 7400 Cal
21 Yr BP, which corresponds to the first real threshold in the site-count data (fig 5). The SPD shows a first
22 increase in density in the karstic area (caves/rockshelters) and in the open-air sites around 7400 in BGZ
23 II and 7200 Cal Yr BP in BGZ I, in correlation with the RC curve which really turns upwards at 7600
24 Cal Yr BP. Comparison of the cave-rock shelter SPD with the 95% MC envelope for SE France as a
25 whole (fig 4e) shows that karst habitat predominates over open-air occupation from 10,000 to 6,300 Cal
26 Yr BP, though it is possible that this also reflects better preservation and discovery probabilities in
27 caves over this period. A second threshold appears to be crossed at 6300 Cal Yr BP (Early Chassean) in
28 the open air sites in the three zones, correlated in BGZ I with the karst habitat. During the Late
29 Chassean (5900-5600 Cal Yr BP), use of the karst habitat is greatly reduced, while the open-air
30 occupation of BGZ II and III increases significantly. At the beginning of the late Neolithic, the open-air
31 settlement (SPD) remains stable in BGZ I between 5600 and 5350 Cal Yr BP, before increasing
32 strongly from 5300 BP, while in BGZ II and III it records a simultaneous decline in open air sites and
33 caves/rock shelter (5600-5300 BP) at the Mid-Late Neolithic transition.
34
35
36
37
38
39
40
41
42
43
44
45
46
47
48
49
50

51 **Fig 5 about here**

52
53
54
55
56 Throughout the second part of the LN and the EBA, the SPD curves of the BGZ I and II show the
57 same trend in open air sites, with a regular increase in density marked by a first jump at 4850 Cal Yr
58 BP, followed by an absolute maximum of synchronous density between 4450-4250 Cal Yr BP (fig 5a
59
60

1
2
3 and b). The high SPD in BGZ I from 5300 to 3900 Cal Yr BP may be exaggerated by research bias.
4
5 Nevertheless, the RC value is also very high in BGZ I and II in this period, which therefore represents
6
7 a true demographic maximum compared to the Early and Middle Neolithic (Fig.5). However, as noted
8
9 above, the results from the TVZ suggest that it is exaggerated in comparison with the Late Bronze
10
11 Age (3300-2700 Cal Yr BP). BGZ III, the Middle Rhone valley, which has similar taphonomic
12
13 conditions to the TVZ, shows a similar SPD pattern, without a marked LN peak and above the overall
14
15 95% confidence interval from 3400 to 2700 Cal Yr BP (fig 4c and 5c). It appears that growth of
16
17 settlement networks in the Late Bronze Age mainly occurs in the floodplains. The site-count curves of
18
19 the three regions, especially BGZ II and III confirm the higher density of the Late Bronze Age
20
21 population compared to the Late Neolithic, with a maximum centred on 2700 BP but they do not
22
23 reflect the brief decline at the Bronze-Iron Age transition (2700 Cal Yr BP), identified only on the
24
25 three SPD curves.
26
27
28
29
30

31 **Fig 6 about here**

32
33
34 From c. 2200 Cal Yr BP all the site-derived proxies rise very steeply to a new peak corresponding to
35
36 the early Roman period before declining almost as steeply to a trough c. 1200 Cal Yr BP (Fig. 5).
37
38 They then rise again to a peak at c.800-700 Cal Yr BP in BGZ III, not seen in BGZ I and II, where the
39
40 later peak and decline are probably an artefact of the record. Fig 6a shows the number of occupations
41
42 per period calculated as a percentage of the total number of occupations for the timespan from 2750 to
43
44 350 Cal Yr BP, for the eastern Languedoc survey micro-region, comparing the Archaeomedes-
45
46 Archaeodyn data with our data pattern for the micro-region (see Fig. 1 for the location and spatial
47
48 extent of the archaeological survey). The two patterns are very similar but our data tend to over-
49
50 represent the earlier periods and under-represent the early Roman and medieval periods. Both
51
52 databases show the same minimum between 1400 and 1200 Cal Yr BP. However, if we compare the
53
54 fluctuations in the cumulative area occupied calculated for the micro-region (Archaeomedes-
55
56 Archaeodyn project), as opposed to the number of occupations, we can see that they are much less
57
58 marked (fig 6b), so the count figures are telling us about site dispersal and nucleation as well as about
59
60

1
2
3 overall density. Similar patterns are seen in the Ardèche-Tricastin and Etang de Berre micro-region
4
5 survey areas when the Archaeomedes II and our datasets are compared (not shown), although the
6
7 number of settlements in the latter dataset for these two micro areas is very small.
8
9

10 11 **B Human impact on vegetation dynamics in Southern France**

12 13 14 15 16 *C Pollen results*

17
18
19
20 The cluster analysis results indicate that during the early Holocene (since 11000 Cal Yr BP in the
21
22 datasets presented here) the landscape of southern France was dominated by pine woods/forest
23
24 (clusters 4.0 and 5.1) and mesic forest (cluster 8.4) (Fig. 7a). These clusters declined from around
25
26 8000 Cal Yr BP and were replaced by fir forest (cluster 7.0), coniferous forest (cluster 8.2), and
27
28 deciduous oak woods (cluster 6.1), which initially increased from around 10000 Cal Yr BP. This was
29
30 then followed by a gradual increase in 7.0 and 8.2, which, with the exception of cluster 6.1, peak
31
32 around 6000 Cal Yr BP, followed by a gradual decline and replacement by beech woods (cluster 8.3)
33
34 and alder woods (cluster 8.1) until 1500 Cal Yr BP. A more recent increase in deciduous oak parkland
35
36 (cluster 6.2), pasture/wetland (cluster 3.0), and to a lesser extent, steppe parkland (1.3) and
37
38 sclerophyllous parkland (1.1) is also evident, and in the modern landscape pine forest (cluster 4.0) and
39
40 pine woods (cluster 5.1) increase in abundance.
41
42
43
44

45 **Fig 7 about here**

46
47
48
49 When split into the three biogeographic zones regional dissimilarities are evident with regard to the
50
51 dominant vegetation types and their trajectories of change. The coastal Mediterranean area (BGZ I;
52
53 [fig 7b](#)) shows greater abundance of deciduous oak woods (cluster 6.1), the first appearance of
54
55 deciduous oak parkland (cluster 6.2) (from 7000 Cal Yr BP) and pasture/wetland (cluster 3.0) from
56
57 9500 BP, well before the beginning of the Neolithic. Fir forest (cluster 7.0) is not represented in this
58
59 region and conifer forest (8.2) and beech woods (8.3) are barely represented ([Fig. 7b](#)). The supra-
60

1
2
3 mediterranean region (BGZ II; [fig 8a](#)) shows the same patterns of vegetation change as the combined
4 record for southern France, which is not surprising as there are a greater number of pollen sites in this
5 region resulting in BGZ II having a greater overall influence on the patterns observed with fir forest
6 (cluster 7.0) well represented throughout the mid-Holocene and less mesic forest (cluster 8.4) in the
7 early Holocene ([Fig. 7e](#)). BGZ III (middle Rhône valley; [fig 8b](#)) is the most distinctive region, with
8 less diversity in vegetation cluster groups overall ([Fig. 7d](#)). This may be reflective of the vegetation
9 structure of this region, but is also the result of the ~~fewer~~smaller number of pollen sites in BGZ III,
10 which means there is less overall diversity captured by the datasets. The early Holocene is dominated
11 by mesic forest (8.4), which declines around 7000 Cal Yr BP and is replaced by fir forest (7.0), then
12 alder woods (8.1) and beech woods (8.3) from 4500 BP. Finally, it is replaced by deciduous oak
13 parkland (6.2) from 2000 Cal Yr BP and pasture/wetland (3.0) since 1400 Cal Yr BP. Pine steppe
14 (cluster 5.2), deciduous oak parkland (6.2) and coniferous forest (cluster 8.2) are abundant in the
15 modern landscape.

Fig 8 about here

16
17
18
19
20
21
22
23
24
25
26
27
28
29
30
31
32
33
34
35
36
37 Each vegetation cluster is distinctive but the same pollen taxa can be found in multiple clusters, within
38 different distinct assemblages. As an additional useful assessment of major changes in the vegetation
39 patterns over time, indicator groups have been calculated using pollen percentage data for each region
40 ([fig 89](#)). Some of these represent pollen groups associated with human land use, such as pastoral
41 indicators, which increased from around 2500 Cal Yr BP for all regions combined. The anthropogenic
42 pollen index (API) steadily increases from 5500 Cal Yr BP with a marked rise around 2000 BP. The
43 OJC index also increases after 2500 Cal Yr BP, which may indicate increasing human impacts since
44 this time. The AP% (arboreal pollen %) declines steadily from 4500 Cal Yr BP with a more marked
45 decrease from 2500 Cal Yr BP. The increasing OJC index during this time illustrates the changing
46 composition of arboreal pollen. When split into separate regions ([fig 9b](#)) similar patterns are shown in
47 the Mediterranean coastal area (BGZ I) to the record for all regions combined, although they are
48 slightly more noisy, which results from the smaller number of sites in the sub-regions. The supra-

1
2
3 Mediterranean region (BGZ II) shows similar overall patterns although the API and pastoral
4 indicators indicate an earlier peak around Cal Yr 8000 BP, and then steadily increase from around
5 4000 Cal Yr BP. The OJC index increases from 2500 Cal Yr BP with a recent decline in the last 400
6
7 years in both the supra-Mediterranean and middle Rhône regions (BGZ II and III) whereas OJC
8
9 remains high until the modern period in the coastal Mediterranean region (BGZ I).
10
11
12
13
14
15

16 **[Fig 9 about here](#)**
17
18
19

20 **B Correlation between inferred population and pollen-based indices**

21
22
23

24 Tables III-VI show the Spearman's correlation between the pollen-based indices of human impact and
25 the demographic proxies for southeastern France as a whole and for each of the biogeographic zones
26 (see fig 9 for a visual comparison). The correlations with the radiocarbon record only cover the period
27
28 up to 2400 Cal Yr BP because after that date it is no longer a satisfactory demographic proxy. All the
29
30 different demographic proxies are highly correlated with one another and also have generally high
31
32 negative correlations with the AP values. The different human impact proxies are all quite strongly
33
34 positively correlated with one another, again as one would expect. For southern France as a whole the
35
36 highest correlations with the demographic proxies are shown by the OJC and RHAPI values. This also
37
38 true for BGZ I, with RHAPI higher than OJC. In BGZ III there are equally high correlations between
39
40 the demographic proxies and OJC and RHAPI, though the former is less obvious visually (fig 89b).
41
42
43 BGZ II, however, is different. Here the correlations between RHAPI and the population proxies are
44
45 weak, and in two of the four cases not significant. The correlations with OJC remain high, especially
46
47 for the transformed site count data (aoristic weights and random start dates), which cover the whole of
48
49 the chronological range, suggesting that for this zone the tree crops are especially important.
50
51
52
53
54
55

56 **Tables III-VI about here**
57
58
59

60 **B Palaeoclimate**

1
2
3
4
5 Ideally, the long-term record of human demography in south-eastern France could be compared
6 against the record of regional climate variations as an alternative potential driver of land cover
7 change. However, this is made more difficult because of a lack of palaeoclimate data within the
8 region. There are reconstructions of climate from pollen evidence in Mediterranean France (e.g. Jalut
9 et al., 2009; Guiot and Kaniewski 2015; Azuara et al., 2015; Peyron et al., 2017) and also from
10 fluvial environments (Bravard et al. 1997), but these data cannot then be used to establish the
11 consequences for land cover without circular reasoning. For this reason, southern France is the only
12 case study region in this special issue for which a hydro-climate reconstruction has not been possible
13 (see Finné et al., this volume). Instead, we make a brief summary here of the available climate records
14 in south-eastern France and adjacent regions, other than from palynology and fluvial geomorphology.
15
16
17
18
19
20
21
22
23
24
25
26
27

28 The Grotte de Clamouse, west of Montpellier and lying at 75 m a.s.l., has a speleothem stable isotope
29 record spanning the whole Holocene (McDermott et al., 1999). $\delta^{18}\text{O}$ shows a narrow range of isotopic
30 variation between -4.5 and -5.5 ‰ during the last 11,000 years, with minimum values between 4000
31 and 1600 Cal yr BP. $\delta^{13}\text{C}$ displays a much larger range (-7.5 to -11 ‰) over this time, with
32 progressive isotopic depletion prior to ~2000 Cal yr BP, followed by a reversal of this trend in the last
33 two millennia. The authors inferred that for $\delta^{18}\text{O}$, temperature rather than precipitation was the main
34 climatic control, while for $\delta^{13}\text{C}$ changes in vegetation and soil carbon must have been key controls. In
35 the Alpes de Haute Provence, Lac Petit has been studied for pollen, diatoms and geochemistry
36 (Cartier et al., 2015). This small lake near to the upper tree line shows an important regime shift at
37 ~4000 Cal yr BP, which the authors inferred was triggered by the 4.2 ka BP abrupt climate event.
38 The 4.2 ka climate event is also clearly evident in the speleothem stable isotope record from Renella
39 cave in northwest Italy (Drysdale et al., 2006). In the western French pre-Alps and extreme southern
40 Jura (BGZIII), transgressive lake levels around 3500 and 2750 Cal yr BP (Cerin-Bourget) favoured
41 the abandonment of lake-dwelling sites during the Middle Bronze Age and at the end of the Late
42 Bronze Age (Magny et al. 2009), simultaneously with increasing soil erosion, flood frequency and
43 torrential river activity showing increased connectivity with the upper basins (Arnaud et al. 2005;
44
45
46
47
48
49
50
51
52
53
54
55
56
57
58
59
60

1
2
3 Simmoneau et al. 2013; Berger 2015). The lake-level data of Cerin indicate high water levels at
4 8200/8000, 7500/7200, 6500/6000, 5600/4800, 4200, 3900 and 2700/2200 Cal. BP (Magny et al.
5
6 2011). The Paladru lake shore records transgressive phases around 2600/2500 and 1600 Cal. BP, and
7
8 3 important regressive phases around 3000-2800, 1500-1200 and 1050-900 AD during the Medieval
9
10 Climate Anomaly (Brochier et al. 2007). Other climate reconstructions for south-eastern France have
11
12 relied on more distant correlations, for example, with the North Atlantic Bond cycles (e.g. Azuara et
13
14 al., 2015). However, by definition this assumes that climate in this region was controlled primarily by
15
16 Atlantic-sourced precipitation, rather than southern moisture sources linked to western Mediterranean
17
18 sea-surface temperatures (SSTs), such as *Cévenol* storms. Alkenone-based SSTs from shallow marine
19
20 core KSGC-31 in the Gulf of Lions show a decline of $\sim 3^{\circ}\text{C}$ between 5500 and 1500 Cal yr BP, with a
21
22 partial reversal in the last millennium (fig 9a; Jalali et al., 2016). Analysis of n-alkanes in the same
23
24 core show an increase in chain lengths during the course of the Holocene, which has been interpreted
25
26 as indicating an increasing moisture deficit in the River Rhône catchment (fig 9a; Jalali et al., 2017).
27
28 This would have been linked to drier climatic conditions and/or changes in vegetation cover and
29
30 evapo-transpiration, with notable shifts to drier conditions at 5000 and at 3000 Cal yr BP. This
31
32 appears rather similar to the hydro-climatic trend found in southern and eastern parts of the
33
34 Mediterranean (Finné et al., this volume). In summary, apart from the short-lived dry period at around
35
36 4200 Cal yr BP, current palaeoclimate data from south-eastern France do not show clear, replicated
37
38 trends that would allow a direct, *within-region* comparison with pollen-based land cover in the same
39
40 way as for archaeologically-inferred population.
41
42
43
44
45
46
47

48 **A Discussion: Socio-Environmental trajectories from the Early to the Late Holocene**

49
50
51 The reading of the various demographic proxy curves identifies a tendency from 7500 Cal Yr BP for
52
53 consistent increase in the number of sites and archaeological ^{14}C dates (at least until 4400 BP), before
54
55 a long intermediate depression. Globally, despite differences in the size of the archaeological
56
57 population, we observe a clear synchronism between demographic trends in the three sub-regions of
58
59 southern France, including the TVZ dataset between 10,000 and 500 Cal Yr BP. The correlation
60

1
2
3 appears even more robust from 2200 to 1000 BP. In the following paragraphs we present a socio-
4 environmental reading of the data in terms of successive thresholds from the beginning of
5 Neolithisation (threshold 1: 7400 Cal Yr BP) until the medieval period (threshold 7: 1000 Cal Yr BP)
6
7 (fig 89).
8
9

10
11
12
13 The thresholds generally correspond to a significant increase in the various population indicators.
14 They can appear suddenly (for example 1, 2 or 6) or represent the starting point of a lasting trend
15 towards a growth in the number of occupations which can culminate 1 or 2 centuries after, especially
16 after periods of partial withdrawal or reorganization. Their appearance is much more visible in the
17 SPD until the end of the Neolithic. In most cases these thresholds correspond to rapid changes in at
18 least one of the main agropastoral indicators, to a decline in tree cover or/and to the development of a
19 cluster associated with a characteristic landscape management. In the Late Holocene, thresholds 6 and
20 7 show a much clearer correlation with more anthropogenic reactive landscapes. Short periods of
21 occupation depression are identified between these successive thresholds. They can be very short (a
22 century) or more long-lasting, as in the Bronze Age or early medieval period (fig.2 and 89). They
23 correspond to fast and significant decreases of the raw count and its derivatives, synchronous or not
24 with the SPD.
25
26
27
28
29
30
31
32
33
34
35
36
37
38
39
40

41 **B Threshold 1: 7400 Cal Yr BP**

42
43
44
45 The main growth thresholds are found in each of the 3 biogeographic units (Fig. 89), from the plains
46 to the foothills of the Mediterranean mountains, around 7500/7400 BP (Early Neolithic Cardial).
47 Simultaneous impacts on vegetation are not observed before 7000 Cal Yr BP in BGZ 1 (API, RHAPI)
48 which corresponds to the full agropastoral development of the Epicardial (with the complete Neolithic
49 toolkit) and the appearance of the first real villages from Languedoc to the Middle Rhone Valley
50 (Guilaine, Manen 2005, Perrin et al. 2014, Berger 2015). BGZ I clearly records this first agropastoral
51 impact from 7250 Cal Yr BP with two main peaks of API-RHAPI, associated with a slow decrease of
52 the AP sum (fig 89). The supramediterranean zone (BGZ II) does not see any particular anthropic
53
54
55
56
57
58
59
60

1
2
3 impact, whereas a sharp recession of the forest cover (AP sum) in the MRV (BGZ III), centred on
4
5 7500 Cal Yr BP, curiously does not appear associated with any anthropogenic markers. This signal
6
7 could then be associated with the abrupt climatic change that peaks between 7600-7300 Cal Yr BP in
8
9 the region (Berger et al., 2016) and whose effects on the central-European vegetation are proven
10
11 (Davis et al. 2003).
12
13

14 15 **B Threshold 2: 6500/6300 Cal Yr BP**

16
17
18
19
20 This increase in settlement density corresponds to the Chassean period, with two SPD peaks in BGZ
21
22 II-III and the TVZ dataset corresponding respectively to its early (6300 Cal Yr BP) and late
23
24 (5800/5700 Cal Yr BP) phases (fig 89). In Languedoc and in the MRV, the density of sites and the
25
26 presence of vast open-air sites on Quaternary terraces show the dynamism of this period.
27
28 Archaeological, zoological, botanical and geoarchaeological data illustrate a rather pastoral culture
29
30 (Beeching et al. 2000, Bréhard et al. 2010); caves are mainly used as stabling areas for ovicaprid
31
32 herds (Brochier et al. 1999, Thiébaud 2005, Argant et al., 1991). Between 6500-6300 Cal Yr BP, the
33
34 first forest clearings are identified in BGZ I and II (AP sum) with an increase in RHAPI, and again
35
36 around 5800 Cal Yr BP in BGZ I. At the southern regional scale, steppe parklands and
37
38 pasture/wetland areas appear. These regional vegetation tendencies confirm the Chassean system of
39
40 landscape management, associated with a dehesa-like landscape, which permitted a sustainable use of
41
42 the resources for nearly a millennium (Delhon et al. 2008).
43
44
45
46

47 *C The post-Middle Neolithic occupation depression : 5550/5400-5300 Cal Yr BP*

48
49
50
51 The low number of known sites at the final Chassean-Late Neolithic transition 1 (5550-5300 Cal Yr
52
53 BP), seen in the RSD and SPD curves of BGZ II-III, supports past interpretations of a regional
54
55 demographic decline during a period that is still poorly defined culturally (Beeching 2002, Lemerrier
56
57 2007). Few pollen indicators reflect this possible cultural withdrawal in the three BGZs, but all
58
59
60

1
2
3 anthropic markers are low and deciduous oak woods seem to recover after a decline during the
4
5 Chassean period. The API and RHAPI are at their minimum (fig. 89).
6
7
8
9

10 **B Threshold 3: 5300 Cal Yr BP**

11
12
13 This corresponds to the first abrupt settlement increase of the Late Neolithic (5300 Cal Yr BP), seen
14
15 in all demographic markers in BGZ I and II, and with a slight delay in the TVZ dataset (fig 2; 5050
16
17 Cal Yr BP). It is associated with the growth of the Ferrières, Fraischamp and Couronnien groups from
18
19 3300/3200 BCE in the Provencal, Languedoc and Rhône domains. It is not seen in BGZ III, whose
20
21 dynamics at this time are related to those of the more central-European regions. In BGZ I, API, OJC
22
23 and *Olea* increase from 5300 BP. In BGZ II, most anthropic indicators increase simultaneously from
24
25 5250 BP (OJC, API, RHAPI) and in BGZ III despite a sharp and significant fall in AP sum, centred
26
27 on 5500 BP, the anthropic indices are restricted (fig. 89).
28
29
30
31
32

33 **B Threshold 4: 4850 Cal Yr BP**

34
35
36 This continues the increase from threshold 3 showing an impressive maximum of sites (RC) and ¹⁴C
37
38 dates (SPD). Languedoc, the Gulf of Lions coastline and Provence (BGZ I) form a hot spot of human
39
40 settlement during the 5th millennium BP indicating probable population growth in geographic sectors
41
42 little occupied until then (limestone scrubland, mountain) (Carozza et al. 2005, Loison et al. 2008,
43
44 Lemerrier 2007). The most significant evidence is the increase in large enclosed settlements in plains
45
46 and coastal areas during the Late Neolithic II (4750 Cal Yr BP) and III (until 4250/4150 Cal Yr BP).
47
48 The onset of this human pressure on the landscape corresponds to a period of consolidation (4450–
49
50 4250 Cal Yr BP), an important segmentation of space, and the development of specialisation
51
52 strategies, e.g. in copper metallurgy (Carozza et al. 2005, 2015). Concentrated phases of occupation in
53
54 the hilly areas involve repeated impacts on vegetation (perceived in AP sum, OJC, OJCV, API, and
55
56 RHAPI of the three BGZs). The deciduous oak forest cluster culminates towards 4500-4300 BP and
57
58
59
60

1
2
3 confirms the human forcing in the hilly areas and the influence of pastoralism. At the same time, there
4 is a rapid decline of subalpine fir stands in favour of alder and beech woods.
5
6
7
8

9 *C The post-Neolithic multi-century occupation depression : 4300/4000-3300/3200 Cal Yr BP*
10
11
12

13 The abrupt reversal of the AW, RSD and especially the RC curve just after 4400/4300 Cal Yr BP in
14 BGZ I and II is impressive, with a two-thirds decrease in RC site density (fig 5); it is seen slightly
15 later in the SPD. The TVZ data illustrate at the same time (around 4250 Cal Yr BP) the abandonment
16 of the sites of the local Bell Beaker culture and an archaeological hiatus of about a century until the
17 emergence of the Early Bronze Age (EBA) around 4150 Cal Yr BP (Berger et al. 2007, Carozza et al.
18 2015). Here the SPD and buried sites curves confirm the simultaneity of the phenomenon (fig. 2).
19
20
21
22
23
24
25

26 This regional trend reversal may be linked to the 4.2 ka BP abrupt climate change detected in the
27 lakes and fluvial archives at the regional scale (Magny et al. 2011, Arnaud et al. 2007, Berger 2015).
28 The SPD and RC/RSD indicators reveal that the abandonment does not continue beyond 4100-4000
29 Cal Yr BP in the three BGZs nor in the TVZ, where a reoccupation of the floodplains is associated
30 with villages and groups of storage pits on excavated sites (Berger et al. 2007). Compared with the
31 Bell Beaker/Fontbouisse maximum, the number of EBA 1 settlements is low. This period is
32 considered as a reorganisation phase around 4100–3850 Cal Yr BP (Carozza et al. 2015, Vital et al.
33 2012). The attraction of intermediate areas (Auvergne medium-elevation mountains), and of high
34 mountains (Pyrenees, northern and southern Alps) causes a reorganisation of settlement around
35 pastoral and hunting activities (Marguet et al. 2008; Walsh et al. 2006) or mining (Bailly-Maitre et al.
36 2008). This regional reorganisation could have had an impact on the soil and vegetation cover in
37 partially abandoned low alluvial plains and northern Mediterranean coastal areas.
38
39
40
41
42
43
44
45
46
47
48
49
50
51
52
53

54 All the data signal a long slow decrease of demographic indicators until shortly after 3500 Cal Yr BP,
55 when the trend reverses, to peak during the LBA around 3200/3000 Cal Yr BP (SPD curve) and a
56 little later around 2900/2700 Cal Yr BP (RC and AW curves). This long post-Neolithic quasi-
57 millennial demographic depression has been discussed in the MRV, where more detailed information
58
59
60

1
2
3 reveals a succession of drops in human impact with rhythms of 1 to 2 centuries, with a maximum
4 decrease during the Middle Bronze Age (fig. 2, Berger et al. 2007). The occupation of karstic
5 caves/rockshelters then increases in the Northern Alps (Marguet et al. 2008), in the canyons of the
6 Rhône (Donzère, Drôme), Ardèche, Cèze and Gard rivers (Vital 1990, Berger *et al.* 2000). Its imprint
7 is not very visible in the synthetic pollen diagrams (slight recovery of deciduous oak and coniferous
8 wood and especially beech woods in BGZ III, and corresponds to a synchronous drop in
9 anthropogenic indicators in BGZ II between 4000-3700 Cal Yr BP). Locally, strong reforestation
10 has been repeatedly identified between the EBA 2 and the beginning of the Late Bronze Age (LBA;
11 3900-3300 Cal Yr BP) (Berger et al. 2000, 2007, Pétrequin and Weller 2007, Richard and Gauthier
12 2007, Martin and Magnin 2002, Delhon and Thiébault 2008).

B Threshold 5: 3300 Cal Yr BP

13
14
15
16
17
18
19
20
21
22
23
24
25
26
27
28
29
30
31 This demographic pressure rises from 3300, but culminates during the Bronze Final IIB phase (3100-
32 3000 Cal Yr BP) (fig 5), associated with the concentration of large villages of several hectares in the
33 MRV floodplains (Billaud 1999) and a significant increase in occupied surface areas, even compared
34 to BFIIB, whose absolute number of sites is nevertheless higher (Berger 2015). The distribution of
35 Bronze Final IIB sites in all the landscape units of the MRV, associated with the presence of groups
36 of storage pits, shows the degree of human pressure on soils at this time (Berger et al., 2007). From
37 the north of BGZ III to the coastal Mediterranean (BGZ I) the BFIIB and BFIIB periods are
38 associated with increased settlement density (Treffort 2005, , Lachenal 2012). This period does not
39 record a real vegetation change before 3000 Cal Yr BP where at the regional scale cluster C1, C4 and
40 C7 indicators appear and the API and RHAPI increase (figs 7-and-9-8). Cluster 8 (pasture/wetland)
41 increases from 3200 Cal Yr BP and the AP sum decreases from 3000 Cal Yr BP. In BGZ I, the main
42 impact is centred on 3000-2700 Cal Yr BP (peak of API-RHAPI, followed by peaks of *Olea*, OJC,
43 and OJCV), as in BGZ II, with a clear decrease in the AP sum.

1
2
3 Archaeobotanical macroremains testify to the existence of fairly permanent and intensive agriculture
4 at this time (Bouby 2010). In BGZ III, the agropastoral impact is identified earlier, from 3400/3300
5 Cal Yr BP (API, RPI, OJC, AP sum (fig 89), in good agreement with the demographic data and with
6
7
8
9 the settlement and economic dynamics to the north (Franche-Comté), which indicate a restart of the
10
11 anthropic pressure at the end of the middle Bronze Age (Pétrequin and Weller 2007).
12
13
14

15 16 **B Threshold 6: 2200 Cal Yr BP**

17
18
19
20 The most important peak in occupation density begins around 2150 Cal Yr BP, and culminates 1950-
21
22 1850 Cal Yr BP (fig 89) (Van der Leeuw et al. 2003, 2005, Favory et Fiches 1994, Archaeomedes
23
24 1998). The site densities decrease from the 2nd century CE and continue slowly downwards until a
25
26 brief respite in this trend in the c. 1700-1500 Cal Yr BP well identified by the AW curve in BGZ I and
27
28 II, in the TVZ, and by a new dynamism in Languedoc's agrarian habitat (fig. 6). Decline continues
29
30 more abruptly from 1500 Cal Yr BP to reach a minimum settlement density c. 1100 Cal Yr BP). As
31
32 noted above, comparison with the results for the period 2750-4350 Cal Yr BP from the Archaeomedes
33
34 and Archaedyn micro-regional survey areas within BGZ I shows that they match well while tending to
35
36 over-estimate the earlier periods and underestimate the Roman peak.
37
38
39
40

41 The work carried out as part of the Archaeomedes project showed that variations in the number of
42
43 sites (fig 6a) were strongly linked to changes in land use patterns. For the period from 2750 to 350 Cal
44
45 Yr BP, the cumulative area occupied by the sites (fig 6b) shows a much more regular demographic
46
47 growth trend. The peak effects, around 2500 BP (identified in the microregional curve) but especially
48
49 between 1950 and 1850 BP are linked to an explosion in the number of small dwellings and
50
51 outbuildings that were later abandoned, reflecting a restructuring of the settlement system at a time
52
53 when population was growing slowly (Brun and Congès 1996, Archaeomedes 1998, Van der Leeuw
54
55 et al. 2003, 2005, Schneider et al. 2007, , Raynaud 2003, Favory et al. 2011). This widespread
56
57 phenomenon (Bertoncello et al. 2012) is closely related to the region's incorporation into the Roman
58
59 Empire, which had a profound impact on settlement patterns and landscapes resulting from the
60

1
2
3 unprecedented economic development of Mediterranean exchanges. This involved new forms of
4 production including commercial agriculture, as well as new consumption patterns (Archaeomedes
5 1998, Garcia and Isoardi 2010, Durand & Leveau 2004.), not simply population increase.
6
7
8
9

10
11 Human impact is evident in the simultaneous development of a majority of anthropic pollen clusters
12 (figs. 7-~~and 89~~) from 2250-2200 Cal Yr BP, which appear mostly continuously from this time
13 onwards (sclerophyllous parkland, steppe parkland, pasture/wetland, deciduous oak parklands, *Olea*,
14 OJC, OJCV, API and RHAPI). Then we observe the rapid decrease of deciduous oak woods (around
15 1500 Cal Yr BP), an abrupt clearing of the alder woods (centred on 2000 Cal Yr BP) related to the
16 exploitation of gallery forests and wetlands, and the disappearance of fir woods (figs. 7-8). The spread
17 of hydraulic systems then ensures the drainage of a large part of the Rhône wetlands, allowing the
18 expansion of cultivated land and the intensification of crops and fodder (Berger 2015, Bernigaud et
19 al., 2014). These signatures reveal, at the scale of the large Roman province of *Gallia Narbonensis*, a
20 commercial agricultural exploitation (vineyards and orchards) which affects all the bioclimatic zones
21 up to the mid-mountains and results in an unprecedented scale of human land use (Berger and Bravard
22 2012, Leveau 1998). Quantitative sediment budget studies (Notebaert and Berger 2014) document a
23 major peak in sedimentation (see Walsh et al. this volume).
24
25
26
27
28
29
30
31
32
33
34
35
36
37
38
39
40

41 C The Early medieval settlement depression : 1300-1200 Cal Yr BP

42
43
44

45 The second rupture observed occurs c. 1300-1200 Cal Yr BP after a slow spatial reorganization of the
46 settlement system from 1600 Cal Yr BP, from a floodplain distribution to a concentration on hills and
47 plateaus in the MRV and BGZ III (Berger et al. 2007). This depression is well recorded in all regions
48 (BGZ I to III, TVZ; fig. 2 and 5) by the AW, RSD and the RC curves. However, it is important to
49 remember that these records only have a 200 year resolution. The SPD curves suggest a much shorter-
50 lived dip of around a century, in keeping with the arguments of Schneider et al. (2007) that the early
51 Medieval period was a dynamic one, with the exception of a century of abandonment from c.1300-
52 1200 BP. This likely population decline associated with regional population restructuring, albeit
53
54
55
56
57
58
59
60

1
2
3 probably short-lived, is reflected in pollen records, mainly in BGZ I and III, where API, RHAPI and
4 LPI indicators strongly decrease while AP sum clearly marks a reforestation phase in BGZ I (fig.
5 89b), lasting a century in the pollen record from Palavas, for example (Azuara et al. 2015). The
6 dynamics of pollen assemblages are clearly different in BGZ II, where the AP sum continue to
7 decrease, associated with a clear maximum in API and RHAPI indicators. A reorganization of the
8 settlements during the early Medieval period towards the plateaus and hills and the middle mountain
9 could explain these signatures (Schneider 2004, 2007, Argant and Cubizolles 2005, Doyen et al. 2013,
10 Berger 2015).

B Threshold 7 : 1000 Cal Yr BP and later

11
12
13 From the 10th century, i.e. shortly before 1000 Cal Yr BP, there was a new momentum marked by an
14 increase in the number of sites. In the BGZ III region, the growth in the number of sites is relatively
15 short since it falls shortly after 1000 BP, around the 12th century CE. In the other two regions, this
16 decline is not visible, although it is well recorded in the Archaeomedes micro-regional curves for the
17 most coastal areas (Favory et al. 1999). Only the curves of the micro-regions north of BGZI or at the
18 BGZII interface show the same signal with continuous growth. Despite a much smaller number of
19 sites at this time than around 1950-1850 BP, micro-regional studies demonstrate that the overall area
20 occupied by the sites is comparatively almost at the same level (Favory et al. 1999). In Languedoc,
21 the typological analysis of the sites also shows for this period, a replacement of the small and medium
22 size occupations by larger and potentially more long-lasting ones. Therefore, as the trajectory for the
23 cumulative occupied area shows (fig 6b), the observed decrease in the number of sites compared to
24 previous periods, especially antiquity, is not a sign of a demographic decline. In fact, it marks the
25 affirmation of the medieval hierarchy and networks underpinned by a much more regular territorial
26 meshwork (Archaeomedes 1998).

27
28
29 During this period and for BGZ1, the local pastoral indicators and the anthropological index (API) are
30 at their highest level while the OJC index increases strongly. This signal is perfectly consistent with

1
2
3 the idea of a settlement reorganisation and the consolidation of the agrarian exploitation around
4 certain places that are more regularly dispersed (Fovet 2004. As observed by Durand and Leveau
5 (2004), 'The growth in farming in the 8th - 9th C, resting on a demographic increase combined with
6 intensive land clearance episodes, owes much to the preceding centuries: the change resides more in
7 the intensification than in the introduction of new features.'

13 14 15 16 **A Conclusion**

17
18
19
20 This paper has traced the various trajectories of population and vegetation change in Mediterranean
21 southern France over the course of the Holocene by comparing and contrasting a range of different
22 proxies. Earlier microregional survey and excavation projects have made it possible to assess and
23 confirm the relative representativeness of the radiocarbon SPD and site-count data for the region as a
24 whole and generally support the broader regional patterns (though it has not been possible to include
25 site-size data). The results indicate a pattern of population fluctuations, revealed in greater detail in
26 the SPD proxy but also evident in the site-count data for the TVZ dataset, for which it was possible to
27 create and apply finer typo-chronological subdivisions.

28
29
30
31
32
33
34
35
36
37
38
39 There is a strong correlation between the population proxies and the various land cover indicators of
40 human impact. This includes the SPD proxy, even though the correlations for this are based only on
41 the period up to 2400 Cal Yr BP, but the values are generally lower than for the transformed site
42 count-data (AW and RSD), confirming the greater human impact in the later periods that is clearly
43 seen in fig. 89.

44
45
46
47
48
49
50
51 In contrast to many other Mediterranean regions, data on climate fluctuations independent of the land-
52 cover proxies presented in this paper are currently lacking for southern France. Consequently, at
53 present we are not in a position to assess climatic impacts on the changing vegetation patterns or on
54 the size of the human population through an effect on the agricultural resources that sustained them,
55 from evidence available within the study region. On the other hand, it is clear that at least from 2500

1
2
3 Cal Yr BP we cannot explain patterns of population and land cover in purely local terms. They result
4
5 from the incorporation of southern France into much larger Mediterranean-wide trade systems and the
6
7 restructuring of the landscape that this involved.
8
9

10 11 **A Acknowledgements**

12
13
14
15
16 This work is the result of a workshop held in Mallorca in September 2017 under the umbrella of the
17
18 Leverhulme Trust funded project “*Changing the Face of the Mediterranean: Land Cover and*
19
20 *Population Since the Advent of Farming*” (Grant Ref. RPG-2015-031), a Plymouth-UCL
21
22 collaboration. Pollen data were extracted from the European Pollen Database (EPD;
23
24 <http://www.europeanpollendatabase.net/>) and amalgamated from the work of data contributors. The
25
26 EPD community is gratefully acknowledged and gratitude is given to Michelle Leydet (the EPD
27
28 manager), and many data contributors who have made a valuable contribution to this research. We
29
30 also thank A. Beeching, J.L. Brochier and F.Ferber for their communication of unpublished
31
32 radiocarbon series from the Chassean period- [and C.Baudouin for her pollen database of the Rhone](#)
33
34 [delta](#). Finally, we are grateful to Joan Estrany and the University of the Balearic Islands for hosting
35
36 the Mallorca workshop.
37
38
39
40

41 **References**

- 42
43 Andrieu-Ponel V., Ponel P., Bruneton H., Leveau P., 2000a. Palaeoenvironments and cultural
44 landscape of the last 2000 years reconstructed from pollen and coleopteran records in the lower Rhône
45 valley, southern France. *The Holocene* 10, 341-355
46
47 Andrieu-Ponel V., Ponel P., Jull A.J.T., Beaulieu J.L. (de), Bruneton H., Leveau P., 2000b. Towards
48 the reconstruction of the Holocene vegetation history of Lower Provence: two new pollen profiles
49 from Marais des Baux. *Vegetation History and Archaeobotany* 9, 71-85
50
51 Archaeomedes 1998. *The Archaeomedes project: Understanding the natural and anthropogenic*
52 *causes of land degradation and desertification in the Mediterranean basin*, European Commission.
53
54 Argant J., Heinz C., Brochier J. L. , 1991. Pollens, charbons de bois et sédiments: l’action humaine et
55 la végétation, le cas de la grotte d’Antonnaire (Montmaur-en-Diois, Drôme). *Revue d’Archéométrie*
56 15, 29-40.
57
58 Argant, J. and Cubizolles, H., 2005. L’évolution holocène de la végétation des Monts de la Madeleine,
59 du Forez, du Livradois et du Pilat (Massif Central oriental, France): l'apport d'une nouvelle série
60

1
2
3 d'analyses palynologiques. *Quaternaire. Revue de l'Association française pour l'étude du Quaternaire*
4 16, 119-142.

5
6 Arnaud, F., Revel-Rolland, M., Chapron, E., Desmet, M., Tribovillard, N., 2005. 7200 years of Rhône
7 river flooding activity recorded in Lake Le Bourget: A high resolution sediment record of NW Alps
8 hydrology. *Holocene* 15, 420-428.

9
10 Arnaud F., Wessels M., Chapron, E., Revel-Rolland, M., and Desmet, M., 2008. Signaux terrigènes
11 dans les grands lacs subalpins: un marqueur régional à haute résolution des conditions
12 paléohydrologiques?. In : Magny, Desmet, Mocchi. *GDR JURALP, Nov 2007, Aix-en-Provence,*
13 *France. Collection EDYTEM - Cahiers de Paléoenvironnement* 6, 77-88.

14
15 Azuara J., Combourieu-Nebout N., Lebreton V., Mazier F., Müller S.D. and Dezileau L., 2015. Late
16 Holocene vegetation changes in relation with climate fluctuations and human activity in Languedoc
17 (southern France). *Climate of the Past*, 11, 1769-1784.

18
19 Azuara J, Lebreton V, Peyron O, Mazier F, Combourieu-Nebout N. 2018. The Holocene history of
20 low altitude Mediterranean *Fagus sylvatica* forests in southern France. *Journal of Vegetation Science*
21 29, 438–449.

22
23 Bailly-Maitre, M. C. and Gonon, T., 2008. *L'exploitation de la chalcoppyrite à l'âge du Bronze dans le*
24 *massif des Rousses en Oisans (Isère): premiers éléments.* Editions du CTHS.

25
26 Beeching, A., 1991. Sépultures, territoire et société dans le Chasséen méridional. L'exemple du bassin
27 rhodanien. In: *Identité du Chasséen, Actes du Colloque international de Nemours, 1989.* Mémoires du
28 Musée de Préhistoire d'Ile-de-France 4, 327–341.

29
30 Beeching A., Berger, J.F., Brochier, J.L., Ferber, F., Helmer, D., and Maamar, H. S., 2000.
31 Chasséens: agriculteurs ou éleveurs, sédentaires ou nomades? Quels types de milieux, d'économies et
32 de sociétés? *Sociétés et espaces, Archives d'écologie préhistorique*, 59-76.

33
34 Beeching, A., 2002. La fin du Chasséen et le Néolithique final dans le bassin du Rhône moyen. In:
35 Ferrari A. and Visentini P., Editors, *Il declino del mondo neolitico. Ricerche in Italia centro-*
36 *settentrionale fra aspetti peninsulari, occidentali e nord-alpini, Atti del Convegno di Pordenone, 5-7*
37 *Aprile 2001.* Pordenone: Museo delle Scienze, 67-83.

38
39 Berger, J. F., 2011. Hydrological and post-depositional impacts on the distribution of Holocene
40 archaeological sites: The case of the Holocene middle Rhône River basin, France. *Geomorphology*
41 129, 167-182.

42
43 Berger, J.F., 2015. Approche socio-environnementale du Néolithique à l'Anthropocène: quelques
44 études intégrées de la vallée du Rhône aux milieux nord Méditerranéens. *Habilitation à Diriger des*
45 *Recherches, Spécialité: Géographie physique, Université Lyon, 2*

46
47 Berger, J.F., Magnin, F., Thiébaud, S. and Vital, J., 2000. Emprise et déprise culturelle à l'Age du
48 Bronze: l'exemple du Bassin Valdainais (Drôme) et de la moyenne vallée du Rhône. *Bulletin de la*
49 *Société préhistorique française* 97, 95-119.

50
51 Berger, J.F., Brochier, J.L., Vital, J., Delhon, C. and Thiebault, S., 2007. Nouveau regard sur la
52 dynamique des paysages et l'occupation humaine à l'Âge du Bronze en moyenne vallée du Rhône.
53 *Environnements et cultures à l'Âge du Bronze en Europe occidentale, Éditions du CTHS (Documents*
54 *préhistoriques* 21), 259-284.

- 1
2
3 Berger, J.F., Nuninger, L. and Van Der Leeuw, S., 2007. Modeling the role of resilience in socio-
4 environmental co-evolution: The middle Rhone valley between 1000 BC and AD 1000. In: Kolher T
5 and Van der Leeuw S. E. (eds), *Modeling Socioecological Systems*. SAR Press, 41-59.
6
7 Berger, J.F., Bravard, J.P., 2012. Le développement économique romain face aux crises
8 environnementales. Le cas de la Gaule Narbonnaise. In Berger, J.F., editor, *Colloque international :*
9 *« Des climats et des Hommes: glaciologie, climatologie, archéologie, histoire »*, Paris, Cité de la
10 Science, 17-19 nov. 2009, éditions la Découverte, 269-289.
11
12 Berger, J.F., Delhon, C., Magnin, F., Bonté, S., Peyric, D., Thiébault, S., Guilbert, R., and Beeching,
13 A., 2016. A fluvial record of the mid-Holocene rapid climatic changes in the middle Rhone valley
14 (Espeluche-Lalo, France) and of their impact on Late Mesolithic and Early Neolithic societies.
15 *Quaternary Science Reviews* 136, 66-84
16
17
18
19 Bernigaud, N., Berger, J.F., Bouby, L., Delhon, C. and Latour-Argant, C., 2014. Ancient canals in the
20 valley of Bourgoin-La Verpillière (France, Isère): morphological and geoarchaeological studies of
21 irrigation systems from the Iron Age to the Early Middle Ages (8th century bc–6th century ad). *Water*
22 *History* 6, 73-93.
23
24 Bertoncello, F., Fovet, E., Gandini, C., Trément, F., & Nuninger, L. (2012). Spatio-temporal
25 dynamics of settlement patterns in central and southern Gaul from 800 BC to 800 AD: models for
26 long-term interregional comparison. In *Settlement Patterns, Production and Trades from the Neolithic*
27 *to the Middle Ages. ARCHAEDYN, Seven Millennia of Territorial Dynamics, Final Conference,*
28 *Dijon, 23-25 June 2008.*,. Archaeopress, 51-64
29
30
31 Bevan, A., Colledge, S., Fuller, D., Fyfe, R., Shennan, S. and Stevens, C., 2017. Holocene
32 fluctuations in human population demonstrate repeated links to food production and climate.
33 *Proceedings of the National Academy of Sciences*, 114, E10524-E10531
34
35 Billaud, Y., 1999. Laprade, Lamotte-du-Rhône (Vaucluse): un habitat de plaine à architecture de terre
36 au Bronze final 2b. *Bulletin de la Société préhistorique française* 96, 607-621
37
38 Blaauw, M. and Christen, J.A., 2011. Flexible paleoclimate age-depth models using an autoregressive
39 gamma process. *Bayesian analysis* 6, 457-474
40
41 Bouby L (2010) *Agriculture dans le bassin du Rhône du Bronze final à l'Antiquité: agrobiodiversité,*
42 *économie, cultures* (Doctoral dissertation, Paris, EHESS).
43
44 Bravard JP, Vérot-Bourrelly A., Franc O & Arlaud C (1997). Paléodynamique du site fluvial de Lyon
45 depuis le Tardiglaciaire. *Documents d'archéologie en Rhône-Alpes* 15, 177-201
46
47 Bravard, J.P., 2003. Dynamiques à long terme des systèmes écologiques ou de l'Eden impossible à la
48 gestion de la variabilité. In Lévêque C., and van der Leeuw, S., editors(éds), *Quelles natures voulons-*
49 *nous*, Elsevier, 133-139.
50
51
52 Bréhard, S., Beeching, A. and Vigne, J.D., 2010. Shepherds, cowherds and site function on middle
53 Neolithic sites of the Rhône valley: an archaeozoological approach to the organization of territories
54 and societies. *Journal of Anthropological Archaeology* 29, 179-188
55
56 Brochier, J.L., Beeching, A., Sidi Maamar, H. and Vital, J., 1999. Les grottes bergeries des Préalpes et
57 le pastoralisme alpin, durant la fin de la Préhistoire. *Circulations et identités culturelles alpines à la*
58 *fin de la préhistoire*, Centre d'Archéologie préhistorique de Valence, Travaux du Centre
59 d'Archéologie préhistorique de Valence no 2, 77-114
60

1
2
3
4 Brochier J.L., Borel J.L., & Druart J.C. 2007. Les variations paléoenvironnementales de 1000 avant à
5 1000 après JC et la question des «optima» climatiques de l'Antiquité tardive et du Moyen Âge sur le
6 piémont des Alpes du nord à Colletière, lac de Paladru, France. *Quaternaire. Revue de l'Association*
7 *française pour l'étude du Quaternaire* 18, 253-270
8

9 Brun, J.-P., and Conges, G., 1996. Une crise agraire en Provence au troisième siècle ? In Fiches, J.L.,
10 editor, *Le III^e siècle en Gaule narbonnaise*, APDCA, 233-276.
11

12 Buttigieg PL, Ramette A (2014) A Guide to Statistical Analysis in Microbial Ecology: a community-
13 focused, living review of multivariate data analyses. *FEMS Microbiology Ecology* 90, 543–550
14

15 Carozza, L., Georjon, C., and Vignau, A., 2005. *La Fin du Néolithique et les debuts de la métallurgie*
16 *en Languedoc central. Les habitats de la colline du Puech Haut à Paulhan, Hérault*, Archives
17 d'écologie préhistorique,
18

19
20
21 Carozza, L. and Georjon, C., 2006. La fin du Néolithique et les débuts de la métallurgie en Languedoc
22 oriental. contrôle social du territoire et pratiques économiques entre 3200 et 2400 av. J.-C. dans la
23 moyenne vallée de l'Hérault. *Revue archéologique de l'Est* 25, 215-237
24

25 Carozza, L., Rostan, P., Bourgarit, D., Mille, B., Coquinot, Y., Burens-Carozza, A. and Artigas, N.E.,
26 2010. Un site métallurgique du Bronze ancien dans le vallon du Longet à Molines-en-Queyras
27 (Hautes-Alpes). In *Archéologie de la Montagne Européenne, 2008*, Errance, 203-230
28

29 Carozza, L., Berger, J.F., Burens-Carozza, A. and Marcigny, C., 2015. Society and environment in
30 Southern France from the 3rd millennium BC to the beginning of the 2nd millennium BC: 2200 BC a
31 tipping point? In H. Meller editor, *2200BC - A climatic breakdown as a cause for the collapse of the*
32 *old world?* Tagungen des Landesmuseum für vorgeschichte, Halle, 12, 333-362.
33

34 Cartier, R., Brisset, E., Paillès, C., Guiter, F., Sylvestre, F., Ruaudel, F., Anthony, E.J. and Miramont,
35 C., 2015. 5000 years of lacustrine ecosystem changes from Lake Petit (Southern Alps, 2200 m asl):
36 Regime shift and resilience of algal communities. *The Holocene* 25, 1231-1245.
37

38
39 Collectif 2002a. *Archéologie du TGV Méditerranée. Fiches de synthèse. Tome 1. La Préhistoire*
40 (Monographies d'Archéologie Méditerranéenne (MAM) 8), Association pour la Recherche
41 Archéologique en Languedoc Oriental.
42

43 Collectif 2002b. *Archéologie du TGV Méditerranée. Fiches de synthèse. Tome 2. La Protohistoire*
44 (Monographies d'Archéologie Méditerranéenne (MAM), 9), Association pour la Recherche
45 Archéologique en Languedoc Oriental.
46

47 Collectif 2002c. *Archéologie du TGV Méditerranée. Fiches de synthèse. Tome 3. Antiquité, moyen-*
48 *âge, époque moderne* (Monographies d'Archéologie Méditerranéenne (MAM), 10), Association pour
49 la Recherche Archéologique en Languedoc Oriental.
50

51 Crema, E.R., 2012. Modelling temporal uncertainty in archaeological analysis. *Journal of*
52 *Archaeological Method and Theory* 19, 440-461.
53

54 Crema, E.R., and Bevan, A., 2018. rcarbon v1.1.2 : Methods for calibrating and analysing radiocarbon
55 dates URL: <https://CRAN.R-project.org/package=rcarbon>
56

57 Crema, E. R., Bevan, A., and Lake, M., 2010. A probabilistic framework for assessing spatio-
58 temporal point patterns in the archaeological record. *Journal of Archaeological Science* 37, 1118–
59 1130.
60

1
2
3 Crema, E.R., Habu, J., Kobayashi, K. and Madella, M., 2016. Summed Probability Distribution of 14
4 C Dates Suggests Regional Divergences in the Population Dynamics of the Jomon Period in Eastern
5 Japan. *PloS ONE* 11, e0154809.

6
7 Davis, B.A.S., Brewer, S., Stevenson, A.C., Guiot, J., and Data Contributors 2003. The temperature
8 of Europe during the Holocene reconstructed from pollen data. *Quaternary Science Reviews* 22,
9 1701–1716

10
11 Davis, B.A., Zanon, M., Collins, P., Mauri, A., Bakker, J., Barboni, D., Barthelmes, A., Beaudouin,
12 C., Bjune, A.E., Bozilova, E. and Bradshaw, R.H., 2013. The European modern pollen database
13 (EMPD) project. *Vegetation History and Archaeobotany* 22, 521-530.

14
15
16 de Beaulieu, J.L., Miras, Y., Andrieu-Ponel, V., and Guiter, F., 2005. Vegetation dynamics in north-
17 western Mediterranean regions: Instability of the Mediterranean bioclimate. *Plant Biosystems* 139,
18 114 – 126

19
20
21 Delhon, C. and Thiebault, S., 2008. An approach to Holocene vegetation history in the middle Rhone
22 valley (France): anthracological data from the «TGV-Méditerranée» excavations. In: Fiorentino, G.
23 and Magri, D., editors, *Charcoal from the past, Cultural and palaeoenvironmental implications.*
24 *Proceedings of the Third International Meeting of Anthracology, Cavallino– Lecce (Italy), June*
25 *28th– July 1st 2004.* Archaeopress, 63-73.

26
27
28 Delhon C., Thiébault S., and Berger, J. F., 2009. La gestion de l'environnement et du paysage au
29 Moyen Néolithique dans le sud de la France: des preuves de systèmes agro-sylvo-pastoraux dans la
30 vallée du Rhône moyen. *Quaternaire international* 200, 50-65.

31
32 Denaire A, Doppler T, Nicod PY & Van Willigen S (2011) Espaces culturels, frontières et interactions
33 au 5ème millénaire entre la plaine du Rhin supérieur et les rivages de la Méditerranée. *Annuaire*
34 *d'archéologie suisse* 94, 21-59.

35
36 Doyen, É., Vannière, B., Berger, J.F., Arnaud, F., Tachikawa, K. and Bard, E., 2013. Land-use
37 changes and environmental dynamics in the upper Rhone valley since Neolithic times inferred from
38 sediments in Lac Moras. *The Holocene* 23, 961-973.

39
40 [Doyen É., Bégeot, C., Simonneau, A., Millet, L., Chapron, E., Arnaud, F., Vannière, B. 2016. Land](#)
41 [use development and environmental responses since the Neolithic around Lake Paladru in the French](#)
42 [Pre-alps. *Journal of Archaeological Science: Reports* 7, 48-59.](#)

43
44
45 Drysdale, R., Zanchetta, G., Hellstrom, J., Maas, R., Fallick, A., Pickett, M., Cartwright, I. and Piccini,
46 L., 2006. Late Holocene drought responsible for the collapse of Old World civilizations is recorded in
47 an Italian cave flowstone. *Geology* 34, 101-104.

48
49 Durand, A., Leveau, P., 2004. Farming in Mediterranean France and rural settlement in the Late
50 Roman and Early Medieval periods: the contribution from archaeology and environmental sciences in
51 the last twenty years. In M. Barcelo and F. Sigaut editors, *The Making of Feudal Agricultures*, Brill,
52 177-253.

53
54 Favory F., and Fiches, J. L., 1994. *Les Campagnes de la France méditerranéenne dans l'Antiquité et*
55 *le haut Moyen Âge: études microrégionales.* Editions de la Maison des sciences de l'homme.

56
57 Favory, F., Girardot, J. J., Nuninger, L., & Tourneux, F. P. (1999). ARCHAEOMEDES II: une étude
58 de la dynamique de l'habitat rural en France méridionale, dans la longue durée (800 av. J.-C.-1600 ap.
59 J.-C.). *AGER* 9, 15-35.

- 1
2
3 Favory, F., Nuninger, L., & Sanders, L. (2012). Integration of geographical and spatial archeological
4 concepts for the study of settlement systems. *Espace géographique (English Edition)*, 41, 272-287.
5
- 6 Favory, F., Ouriachi, M.J., Nuninger, L., 2011. The transformation of rural structures in Southern
7 Gaul between the first century BC and the first century AD. The case of eastern Languedoc (France).
8 In Moosbauer, G., Wiegels, R., *Fines imperii - imperium sine fine ? Römische Okkupations- und*
9 *Grenzpolitik im frühen Prinzipat*, VML, 157-184
10
- 11 Fovet, E. (2004, October). Dynamique spatiale du peuplement et analyse des ressources agro-
12 pastorales dans le bassin de Combas et le vallon de l'Aigalade (Gard, France), du Bronze final au bas
13 Moyen Age. In *Temps et espaces de l'Homme en société, analyses et modèles spatiaux en*
14 *archéologie*, éditions APDCA, 499-503.
15
- 16 Fyfe, RM, de Beaulieu, J-L, Binney, H, Bradshaw, RHW, Brewer, S, Le Flao, A, Finsinger, W,
17 Gaillard, M-J, Giesecke, T, Gil-Romera, G, Grimm, EC, Huntley, B, Kunes, P, Kuhl, N, Leydet, M,
18 Lotter, AF, Tarasov, PE and Tonkov, S (2009) The European Pollen Database: past efforts and current
19 activities. *Vegetation History and Archaeobotany* 18, 417-424
20
- 21 Fyfe, R.M., Woodbridge, J. and Roberts, C.N., 2018. Trajectories of change in Mediterranean
22 Holocene vegetation through classification of pollen data. *Vegetation History and Archaeobotany*, 27,
23 351-364.
24
- 25 Gandini, C., Favory, F., & Nuninger, L. (2012). *Settlement Patterns, Production and Trades from the*
26 *Neolithic to the Middle Ages*, Archaeopress.
27
- 28 Isoardi, D., and Garcia, D., 2010. Variations démographiques et capacités de production des céréales
29 dans le Midi Gaulois: l'impact de Marseille grecque. In Tréziny, H., editor, *Greco et indigènes de la*
30 *Catalogne à la mer noire*, Bibliothèque d'archéologie méditerranéenne et africaine (3), 403-424.
31
- 32 Gaucher, G., 2011. *Evolution de l'occupation du sol et de l'environnement fluvial en haute vallée du*
33 *Rhône (Ain, Isère), du Néolithique à l'époque moderne* (Doctoral dissertation, Université Nice Sophia
34 Antipolis).
35
- 36 Giesecke, T., Davis, B.A.S., Brewer, S., et al. 2013. Towards mapping the late Quaternary vegetation
37 change of Europe. *Vegetation History and Archaeobotany* 23, 75-86.
38
- 39 Guilaine, J., and Manen, C., 2005. From Mesolithic to early Neolithic in the western Mediterranean.
40 In Whittle, A., & Cummings, V., editors, *Going over: The Mesolithic-Neolithic Transition in the*
41 *North-West Europe*, Oxford University Press, 21-51.
42
- 43 Guiot, J. and Kaniewski, D., 2015. The Mediterranean Basin and Southern Europe in a warmer world:
44 what can we learn from the past? *Frontiers in Earth Science* 3, 28.
45
- 46 Gutherz, X. and Jallot, L., 1999. Approche géoculturelle des pays fontbuxiens. In : Vaquer J., editor,
47 *Le Néolithique du Nord-Ouest méditerranéen, Actes du XXIVe Congrès Préhistorique de France,*
48 *colloque 2, Carcassonne, 1994*, Éditions Société Préhistorique Française, 161-174.
49
- 50 Gutherz, X., and Odier, T., 2001. L'archéologie du TGV-Méditerranée: retour sur une expérience. *Les*
51 *Nouvelles de l'Archéologie* 86, 4, 17-21.
52
- 53 Jalali, B., Sicre, M.A., Bassetti, M.A., and Kallel, N., 2016. Holocene climate variability in the North-
54 Western Mediterranean Sea (Gulf of Lions). *Climate of the past* 12, 91-101.
55
- 56
57
58
59
60

Jalali, B., Sicre, M.-A., Kallel, N., Azuara, J., Combourieu-Nebout, N., Bassetti, M.-A., Klein, V., 2017. High-resolution Holocene climate and hydrological variability from two major Mediterranean deltas (Nile and Rhone). The Holocene 27(8): 1158-1168

Jalut, G., Amat, A.E., Bonnet, L., Gauquelin, T. and Fontugne, M., 2000. Holocene climatic changes in the Western Mediterranean, from south-east France to south-east Spain. *Palaeogeography, Palaeoclimatology, Palaeoecology* 160, 255-290.

Jalut, G., Dedoubat, J.J., Fontugne, M. and Otto, T., 2009. Holocene circum-Mediterranean vegetation changes: climate forcing and human impact. *Quaternary international* 200, 4-18.

Juggins, S. (2015) 'Rioja': Analysis of Quaternary Science Data, R package version (0.9-9). (<http://cran.r-project.org/package=rioja>).

Lachenal, T., 2012. *L'age du bronze en Provence: productions ceramiques et dynamiques culturelles* Doctoral dissertation, Atelier national de reproduction des thèses.

Lemercier O (2007) La fin du Néolithique dans le sud-est de la France. Concepts techniques, culturels et chronologiques de 1954 à 2004. *Un siècle de construction du discours scientifique en Préhistoire, Actes du XXVIe Congrès Préhistorique de France, Avignon 1*, 484-500.

Lemercier, O., Furestier, R., Gadbois-Langevin, R. and Paulsson, B.S., 2014. Chronologie et périodisation des campaniformes en France méditerranéenne. In: Sénépart, I., Leandri, F., Cauliez, J., Perrin, T., and Thirault, E., editors, *Chronologie de la Préhistoire récente dans le Sud de la France. Acquis 1992-2012. Actualité de la recherche. Actes des 10e Rencontres Méridionales de Préhistoire Récente, Porticcio, 18 au 20 octobre 2012*, Archives d'Ecologie Préhistorique, 175-195 .

Leveau, P., 1998. Echelles d'anthropisation et archéologie des campagnes de Gaule du Sud à l'époque romaine. *Méditerranée* 90(4), 17-26.

Leveau, P., 2007. Archéologie et géoarchéologie d'une période historique dans les Alpes: les paradigmes épistémologiques de la romanisation. *Géomorphologie: relief, processus, environnement*. 13, 85-98.

Loison, G., Gandelin, M., Vergély, H., Gleize, Y., Tchérémissinoff, Y., Haurillon, R., Marsac, R., Remicourt, M., Torchy, L., Vinolas, F. and Sénépart, I., 2011. Dynamiques d'occupation des sols à la Préhistoire récente dans la basse vallée de l'Hérault: les apports de l'A75, tronçon Pézenas-Béziers. *Marges, frontières et transgressions: actualité de la recherche, actes des 8es Rencontres méridionales de Préhistoire récente (Marseille, 7-8 nov 2008)*, Archives d'écologie préhistorique, 317-344.

Magny M, Peyron O, Gauthier E, Roueche Y, Bordon A, Billaud Y, ... & Vannièrè B (2009) Quantitative reconstruction of climatic variations during the Bronze and early Iron ages based on pollen and lake-level data in the NW Alps, France. *Quaternary International*, 200, 102-110.

Magny, M., Bossuet, G., Ruffaldi, P., Leroux, A. and Mouthon, J., 2011. Orbital imprint on Holocene palaeohydrological variations in west-central Europe as reflected by lake-level changes at Cerin (Jura Mountains, eastern France). *Journal of Quaternary Science* 26, 171-177.

Marguet, A., Bintz, P., Nicod, P.Y., Picavet, R., Rey, P.J. and Thirault, E., 2008. Eléments pour une histoire du peuplement nord-alpin français entre 10000 et 2700 BP. In *GDR JURALP Collection EDYTEM-Cahiers de Paléoenvironnement* 6, 225-252.

Martin, S. and Magnin, F., 2002. Caractérisation des perturbations anthropiques dans la séquence holocène de l'Ubac (Goult, Vaucluse), à partir de la malacofaune. *Annales littéraires-université de*

1
2
3 *Besançon*, Dialogues d'histoire ancienne, 730: 205-212.

4
5 Mazier, F., Galop, D., Brun, C. and Buttler, A., 2006. Modern pollen assemblages from
6 grazed vegetation in the western Pyrenees, France: a numerical tool for more precise reconstruction of
7 past cultural landscapes. *The Holocene* 16, 91-103.

8
9 Mazier F, Galop D, Gaillard, MJ et al. (2009) Multidisciplinary approach to reconstructing local
10 pastoral activities: an example from the Pyrenean Mountains (Pays Basque). *The Holocene* 19, 171-
11 188.

12
13 McDermott, F., Frisia, S., Huang, Y., Longinelli, A., Spiro, B., Heaton, T.H., Hawkesworth, C.J.,
14 Borsato, A., Keppens, E., Fairchild, I.J. and van der Borg, K., 1999. Holocene climate variability in
15 Europe: evidence from $\delta^{18}\text{O}$, textural and extension-rate variations in three speleothems. *Quaternary*
16 *Science Reviews* 18, 1021-1038.

17
18
19 Mercuri, A.M., Bandini Mazzanti, M., Florenzano, A., Montecchi, M.C. & Rattighieri, E., 2013a.
20 Olea, Juglans and Castanea: the OJC group as pollen evidence of the development of human-induced
21 environments in the Italian peninsula. *Quaternary International* 303, 24-42.

22
23 Mercuri, A.M., Mazzanti, M., Florenzano, A., Montecchi, M.C., Rattighieri, E. & Torri, P., 2013b.
24 Anthropogenic pollen indicators (API) from archaeological sites as local evidence of human-induced
25 environments in the Italian peninsula. *Annali Di Botanica* 3, 143-153.

26
27 Notebaert, B. and Berger, J.F., 2014. Quantifying the anthropogenic forcing on soil erosion during the
28 Iron Age and Roman Period in southeastern France. *Anthropocene* 8, 59-69.

29
30 Notebaert, B., Berger, J.F. and Brochier, J.L., 2014. Characterization and quantification of Holocene
31 colluvial and alluvial sediments in the Valdaine Region (southern France). *The Holocene* 24, 1320-
32 1335.

33
34 Nuninger L., Verhagen, P., Tourneux, F.P., Bertoncello, F., and Jeneson, K., 2012: Contextes spatiaux
35 et transformation du système de peuplement: approche comparative et prédictive. In Bertoncello, F.,
36 and Braemer, F., editors, *Variabilités environnementales, mutations sociales. Nature, intensités,*
37 *échelles et temporalités des changements*, APDCA, 139-54.

38
39 Oksanen, J., Guillaume Blanchet, F., Friendly, M., et al. (2016). 'Vegan': Community Ecology
40 Package. R package version 2.4-1.

41
42 Palmisano, A., Bevan, A. and Shennan, S., 2017. Comparing archaeological proxies for long-term
43 population patterns: An example from central Italy. *Journal of Archaeological Science* 87, 59-72.

44
45 Perez, M., Fyfe, R. M., Charman, D. J., & Gehrels, R. 2015. Later Holocene vegetation history of the
46 Isles of Scilly, UK: Coastal influence and human land use in a small island context. *Journal of*
47 *Quaternary Science* 30, 764-778.

48
49 Perrin, T., Manen, C., Séjalon, P. and Bellot-Gurlet, L., 2014. *Le Néolithique ancien de la plaine de*
50 *Nîmes (Gard, France)*. Archives d'écologie préhistorique.

51
52 Pétrequin, P., and Weller, O., 2007. XVe siècle av. J.-C.: la reprise de la croissance démographique
53 dans le Jura. In : Richard, H., Magny, M., and Mordant, C., editors, *Emprises, déprises et rythmes*
54 *agricoles à l'Age du Bronze. Actes du Colloque CTHS Besançon 2004. Documents préhistoriques du*
55 *CTHS*, 21, 197-210.

56
57 Peyron O., Combourieu-Nebout N., Brayshaw D., Goring S., Andrieu-Ponel V., Desprat S., Fletcher
58 W., Gambin B., Loakim C., Joannin S., Kotthoff U., Kouli K., Montade V., Pross J., Sadori L.,
59
60

- 1
2
3 Magny M., 2017. The climate of the Mediterranean basin during the Holocene from terrestrial and
4 marine pollen data: A model/data comparison. *Climate of the Past* 13, 249–265.
5
- 6 Pons, A. and Quézel, P., 1998. A propos de la mise en place du climat méditerranéen. *Comptes*
7 *Rendus de l'Académie des Sciences-Series IIA-Earth and Planetary Science* 327, 755-760.
8
- 9 Raynaud C., 2003. Les systèmes agraires antiques: quelle approche archéologique? In Lepetz, S., and
10 Matherne, V., , 2003. *Cultivateurs, éleveurs et artisans dans les campagnes de Gaule romaine. Revue*
11 *archéologique de Picardie*, n°1-2, 281-298.
12
- 13 Reimer, P.J., Bard, E., Bayliss, A., Beck, J.W., Blackwell, P. G., Bronk-Ramsey, C., et al., 2013.
14 IntCal13 and Marine13 radiocarbon age calibration curves 0–50,000 Years cal BP. *Radiocarbon* 55,
15 1869–1887.
16
- 17 Richard, H. and Gauthier, E., 2007. Bilan des données polliniques concernant l'âge du Bronze dans le
18 Jura et le nord des Alpes. *Environnements et cultures à l'Âge du Bronze en Europe occidentale, Paris,*
19 *Éditions. du CTHS (Documents préhistoriques), 21, 71-88.*
20
- 21 Richard, H., 2004. *Néolithisation précoce: premières traces d'anthropisation du couvert végétal à*
22 *partir des données polliniques*, Presses Universitaires de Franche-Comté.
23
- 24 Roberts, N., Brayshaw, D., Kuzucuoğlu, C., Perez, R. and Sadori, L. (2011) The mid-Holocene
25 climatic transition in the Mediterranean: causes and consequences. *The Holocene* 21, 3-13.
26
- 27 Roberts, N., Woodbridge, J., Bevan, A., Palmisano, A., Shennan, S., and Asouti, E., 2018. Human
28 responses and non-responses to climatic variations during the last glacial-interglacial transition in the
29 eastern Mediterranean. *Quaternary Science Reviews* 184, 47-67.
30
- 31 Schneider, L., 2004. Entre Antiquité et haut Moyen Age: tradition et renouveau de l'habitat de hauteur
32 dans la Gaule du sud-est. In *Paul-Albert Février de l'Antiquité au Moyen Age, Actes du colloque de*
33 *Fréjus, 7 et 8 avril 2001*, Publications de l'Université de Provence, 173-200.
34
- 35 Schneider, L., Fauduet, I., and Odenhardt-Donvez, I., 2007. Structures du peuplement et formes de
36 l'habitat dans les campagnes du sud-est de la France de l'Antiquité au Moyen Âge (IVE-VIIIes.): essai
37 de synthèse. *Gallia*, 64, 11–56
38
- 39 Shennan, S., Downey, S.S., Timpson, A., Edinborough, K., Colledge, S., Kerig, T., Manning, K.,
40 Thomas, M.G., 2013. Regional population collapse followed initial agriculture booms in mid-Holocene
41 Europe. *Nature Communications* 4, 2486
42
- 43 Thiébaud, S., 2005. L'apport du fourrage d'arbre dans l'élevage depuis le Néolithique.
44 *Anthropozoologica*, 40, 95-108.
45
- 46 Timpson, A., Colledge, S., Crema, E., Edinborough, K., Kerig, T., Manning, K., Thomas, M.G. and
47 Shennan, S., 2014. Reconstructing regional population fluctuations in the European Neolithic using
48 radiocarbon dates: a new case-study using an improved method. *Journal of Archaeological Science*
49 52, 549-557
50
- 51 Treffort, J.M., 2005. La fréquentation des cavités naturelles du Jura méridional au Bronze final: état
52 de la question, nouvelles données et perspectives. *Bulletin de la Société préhistorique française* 102,
53 401-416.
54
- 55 van der Leeuw, S.E., et al, 2001. Vulnerability' and the integrated study of socio – natural
56 phenomena, IHDP Update , 2/01, April 2001, .6-7
57
58
59
60

1
2
3 van der Leeuw, S.E., Favory, F., Fiches, J.L. and Audouze, F., 2003. *Archéologie et systèmes socio-*
4 *environnementaux: études multiscalaires sur la vallée du Rhône dans le programme Archaeomedes* ,
5 CNRS.

6
7 van der Leeuw, S.E. and Archaeomedes Research Team, 2005. Climate, hydrology, land use, and
8 environmental degradation in the lower Rhone Valley during the Roman period. *Comptes Rendus*
9 *Geoscience*, 337, 9-27.

10
11 Verhagen, P., and Berger, J. F., 2001. Predictive modelling of buried archaeological sites in the
12 Tricastin-Valdaine Region (Middle Rhone Valley, France). In: Stancic, Z. and Veljanovic, T., editors,
13 *CAA 2000: Computing archaeology for understanding the past*”, *Joint CAA/UISPP Commission IV*
14 *conference*, BAR International Series, 219-231.

15
16 Vernet, J.L. and Thiebault, S., 1987. An approach to northwestern Mediterranean recent prehistoric
17 vegetation and ecologic implications. *Journal of Biogeography*, 14, 117-127.

18
19 Vital, J., 1990. *Protohistoire du défilé de Donzère: l'âge du bronze dans la Baume des Anges*
20 *(Drôme)*. Editions de la Maison des Sciences de l'homme.

21
22 Vital, J., 2012. Repères chronométriques, typologiques et géographiques pour la céramique du Bronze
23 final du Rhône aux Alpes. *Documents d'archéologie méridionale. Protohistoire du Sud de la France*
24 35, 53-84.

25
26 Walsh, K., Richer, S. and de Beaulieu, J.L., 2006. Attitudes to altitude: changing meanings and
27 perceptions within a 'marginal' Alpine landscape—the integration of palaeoecological and
28 archaeological data in a high-altitude landscape in the French Alps. *World Archaeology* 38, 436-454.

29
30 Walsh et al. this volume

31
32 Ward, J.H. (1963) Hierarchical grouping to optimize an objective function. *Journal of the American*
33 *Statistical Association* 58, 236-244.

34
35 Weninger, B., Clare, L., Jöris, O., Jung, R. and Edinborough, K., 2015. Quantum theory of
36 radiocarbon calibration. *World Archaeology* 47, 543-566.

37
38 Williams, A.N., 2012. The use of summed radiocarbon probability distributions in archaeology: a
39 review of methods. *Journal of Archaeological Science* 39, 578-589.

40
41 Woodbridge J., Roberts, N. & Fyfe, R. (in press) Pan-Mediterranean Holocene vegetation
42 and land-cover dynamics from synthesised pollen data. *Journal of Biogeography*.

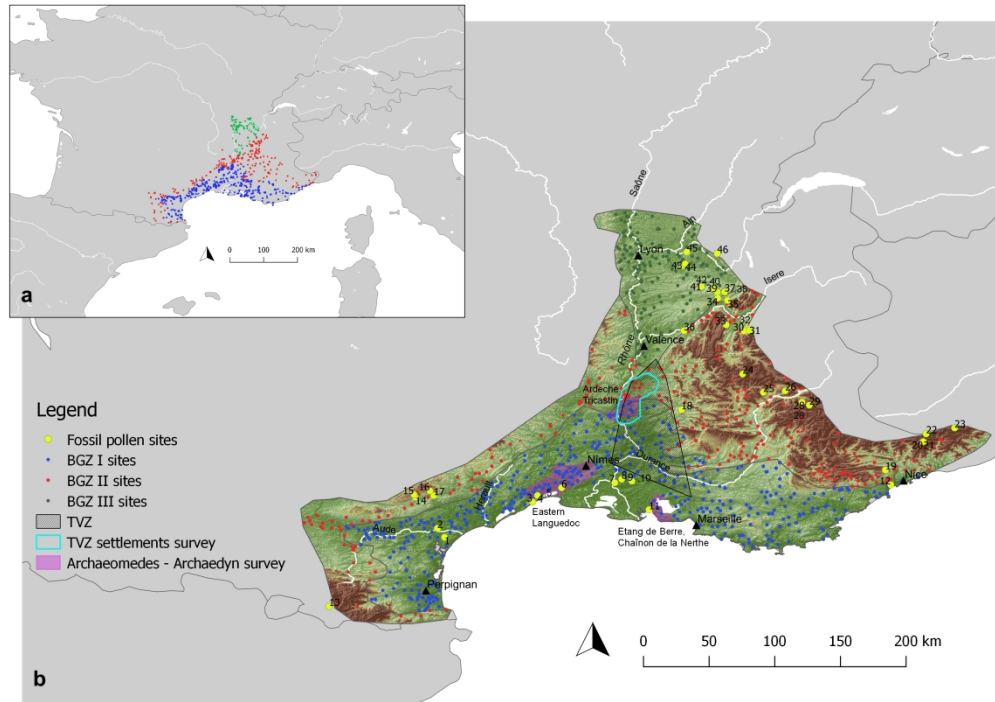


Fig 1 Map of the southern France study area showing the location of the pollen samples (numbers correspond to those in table 2) and the archaeological sites. The boundaries of the Tricastin-Valdain settlement survey area (TVZ), the broader TVZ area that includes radiocarbon dates from recent rescue excavations and the three Archaeomedes II - Archaeodyn survey areas are also shown: Eastern Languedoc: Archaeomedes II - Archaeodyn, 1996-2012, archaeological data: C. Raynaud, F. Favory, L. Nuninger, M.-J. Ouriachi, E. Fovet; Ardèche & Tricastin: Archaeomedes II 1996-1998, archaeological data: J. Goury, C. Jung; Etang de Berre & Chalon de la Nerthe: Archaeomedes II 1996-1998, archaeological data: F. Trément, F. Gâteau.

293x206mm (299 x 299 DPI)

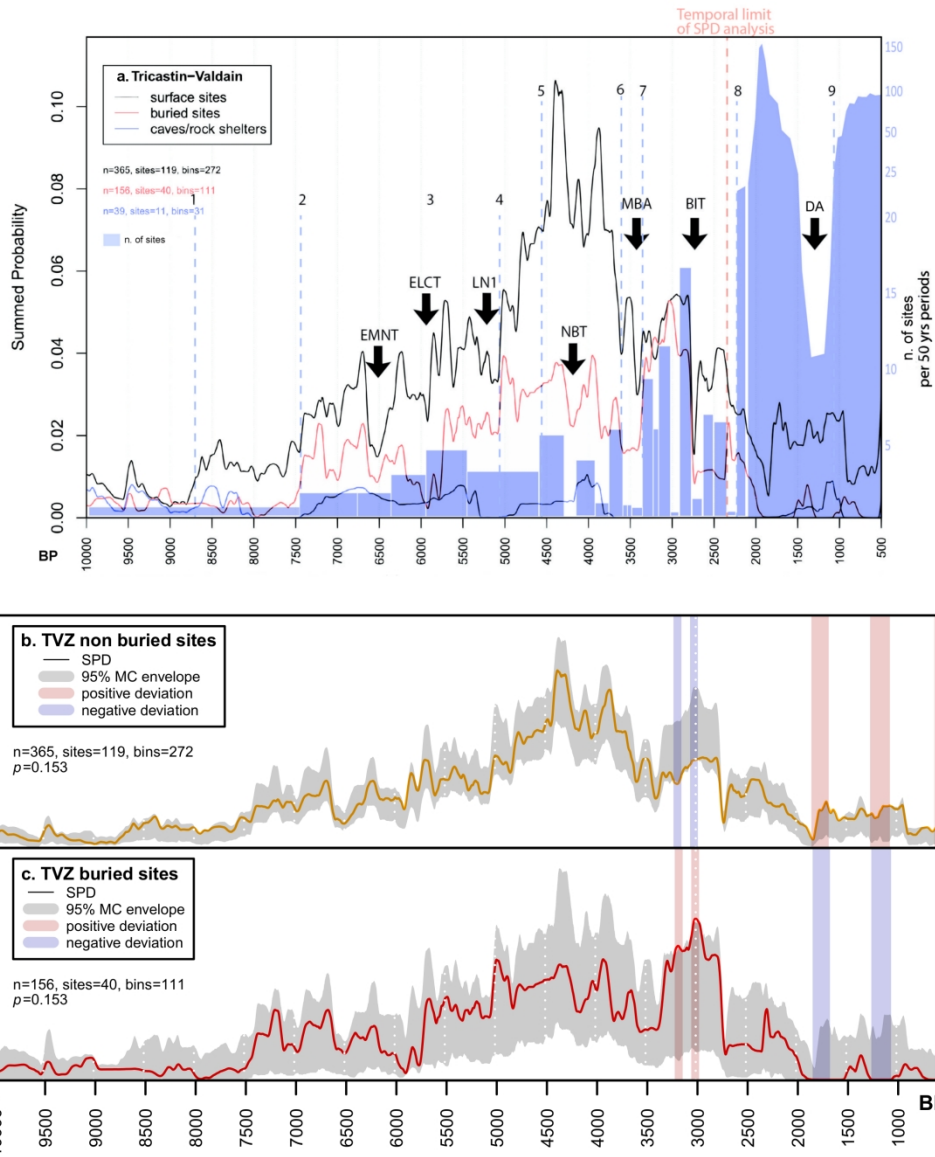


Fig 2a) Summed radiocarbon probabilities and site count data for the Tricastin-Valdain area. Dashed lines correspond to significant thresholds. EMNT: Early-Middle Neolithic Transition, ELC : Early-Late Chassean transition, LNT: Late Neolithic 1 period, NBT : Neolithic-Bronze transition, MBA : Middle Bronze Age period, BIT : Bronze-First Iron Age Transition (8th c. BC), DA: Dark Age period. The bar chart represents the raw count of all archaeological sites divided by half-centuries to standardise the number of sites for the longest cultural phases (2/4 centuries), except for the historical periods where the continuity of occupation is proven at the 50 year scale; 2b) SPD of unnormalised calibrated radiocarbon dates from non-buried sites from the TVZ compared with a 95% Monte Carlo critical envelope for all TVZ sites produced via permutation of subset dates; 2c) SPD of buried sites from the TVZ compared with the same critical envelope.

208x245mm (300 x 300 DPI)

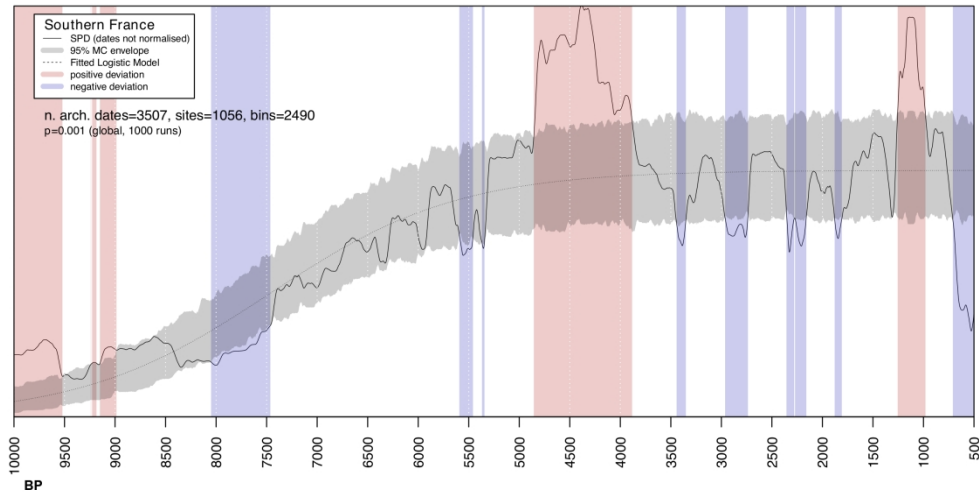


Fig 3 Summed probability distribution of unnormalised calibrated radiocarbon dates from the southern France region as a whole vs. a fitted logistic null model (95% confidence grey envelope). Pink and blue shed bands indicate chronological ranges within which the observed SPD deviates positively and negatively respectively from the null model.

254x127mm (300 x 300 DPI)

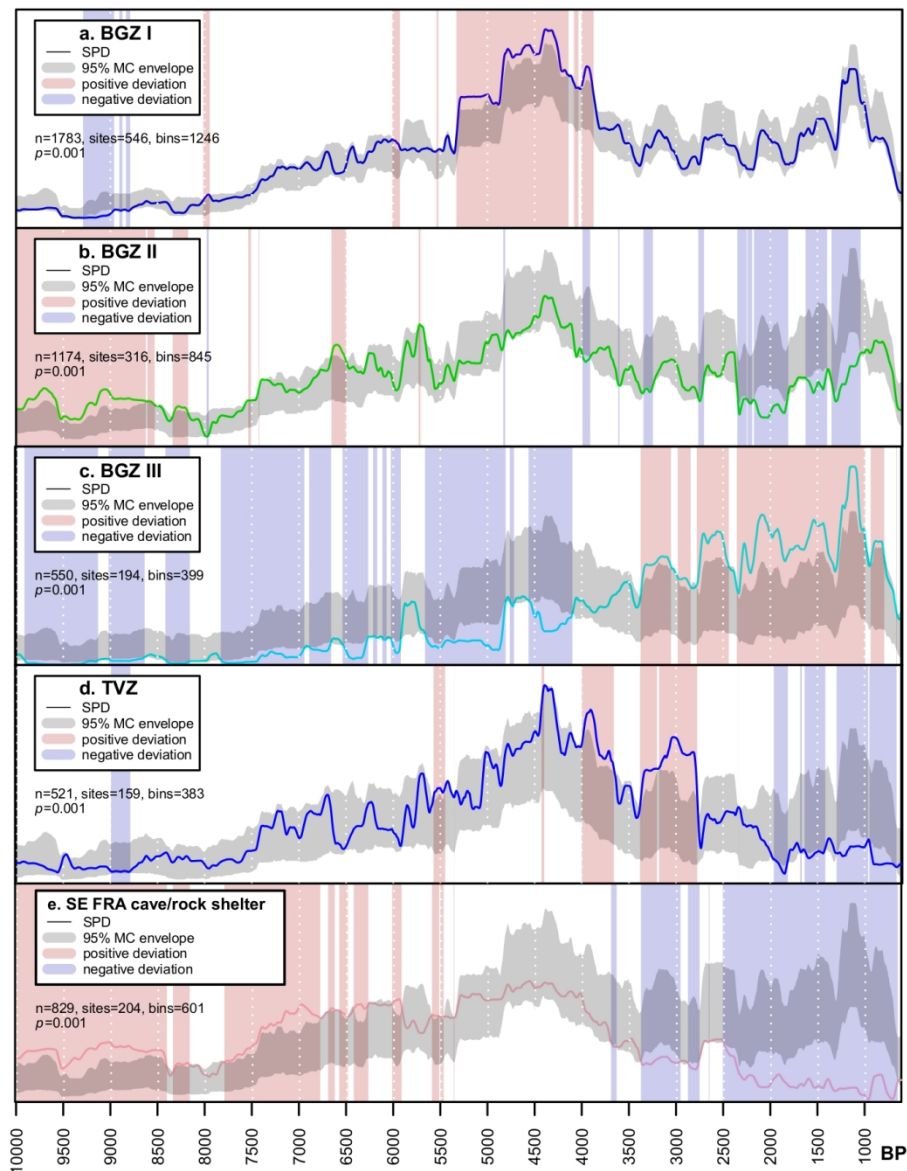


Fig 4 Summed probabilities of subsets of unnormalised calibrated radiocarbon dates compared with relevant 95% Monte Carlo critical envelopes produced via permutation of subset dates; a) BGZ I; b) BGZ II; c) BGZ III, all against the overall southern France pattern ; d) The TVZ against BGZ I and II e) Cave and rockshelter sites against overall southern France.

120x153mm (300 x 300 DPI)

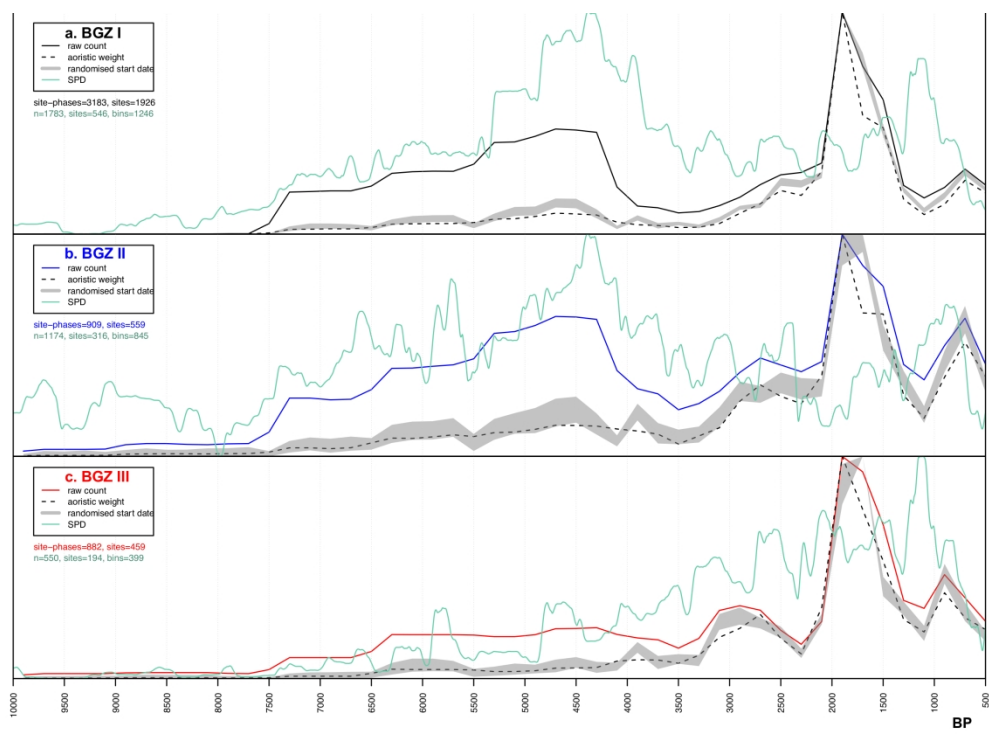


Fig 5 All demographic proxies; a) BGZ I; b) BGZ II; c) BGZ III. Normalised value on a scale between 0 and 1.

236x170mm (300 x 300 DPI)

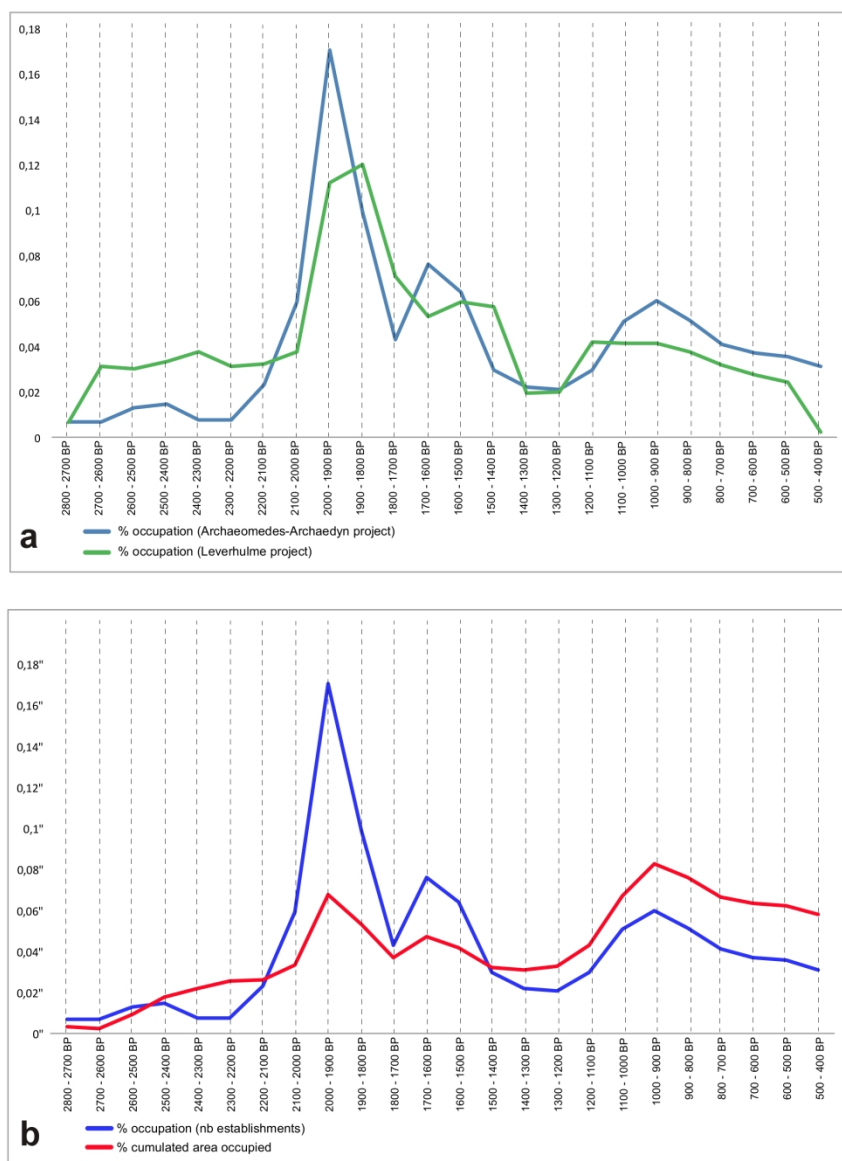
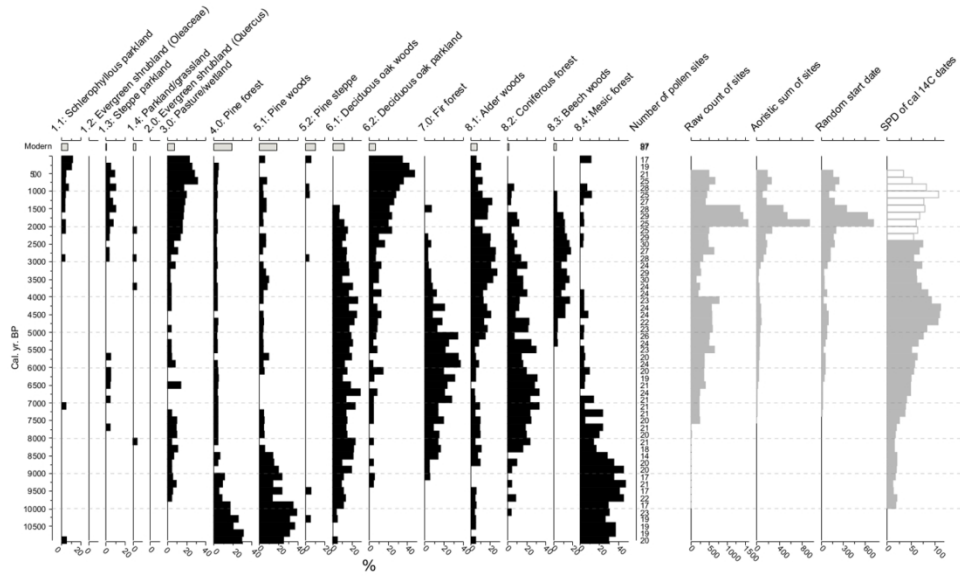


Fig 6a) Site count data for the Eastern Languedoc intensive survey area, comparing the percentage of occupations in each 100 year phase from the Archaeomedes-Archaedyn surveys with the percentage from the same area in the Leverhulme project database; 6b) Site count data for the Eastern Languedoc intensive survey area, comparing the percentage of occupations in each 100 year phase with the percentage of the total area occupied. All data from the Archaeomedes-Archaedyn surveys.

177x235mm (300 x 300 DPI)

a) Southern France sub-regions combined



b) BGZ I

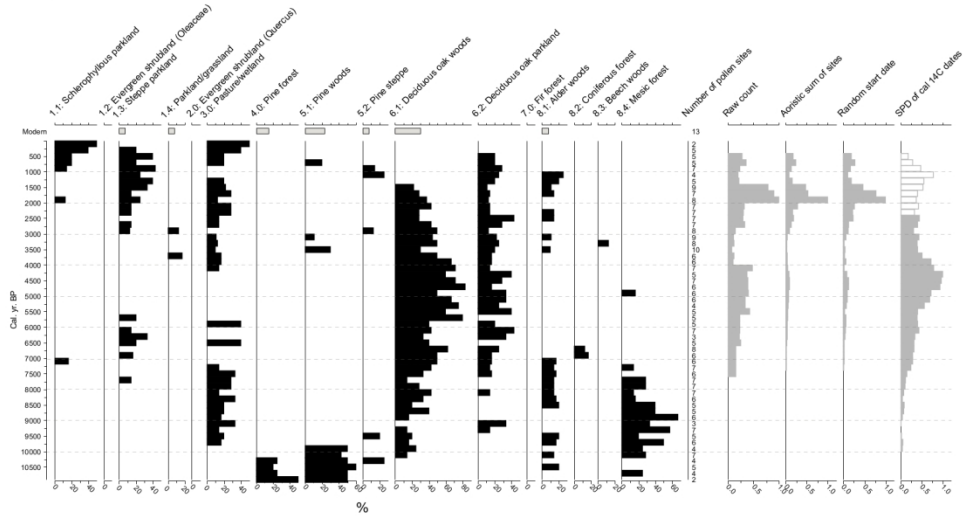
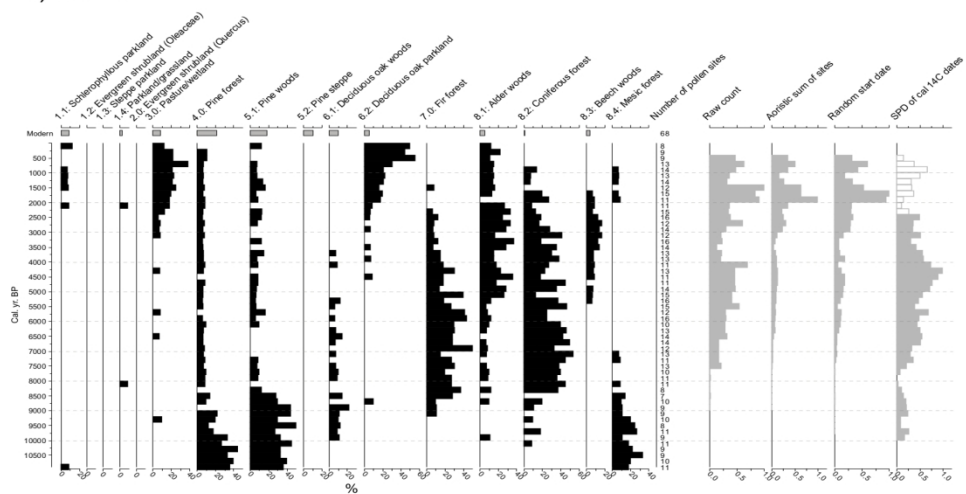


Fig 7 Pollen-inferred vegetation cluster groups and demographic proxies; a) Southern France all regions combined b) BGZ I. Time windows for later periods where the SPD is no longer a reliable proxy are shown in white.

150x183mm (300 x 300 DPI)

1
2
3
4
5
6
7
8
9
10
11
12
13
14
15
16
17
18
19
20
21
22
23
24
25
26
27
28
29
30
31
32
33
34
35
36
37
38
39
40
41
42
43
44
45
46
47
48
49
50
51
52
53
54
55
56
57
58
59
60

a) BGZ II



b) BGZ III

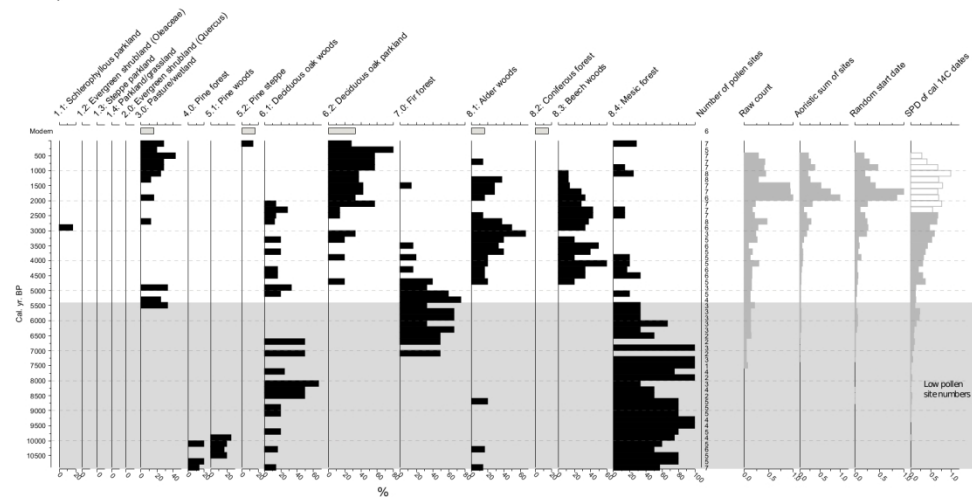
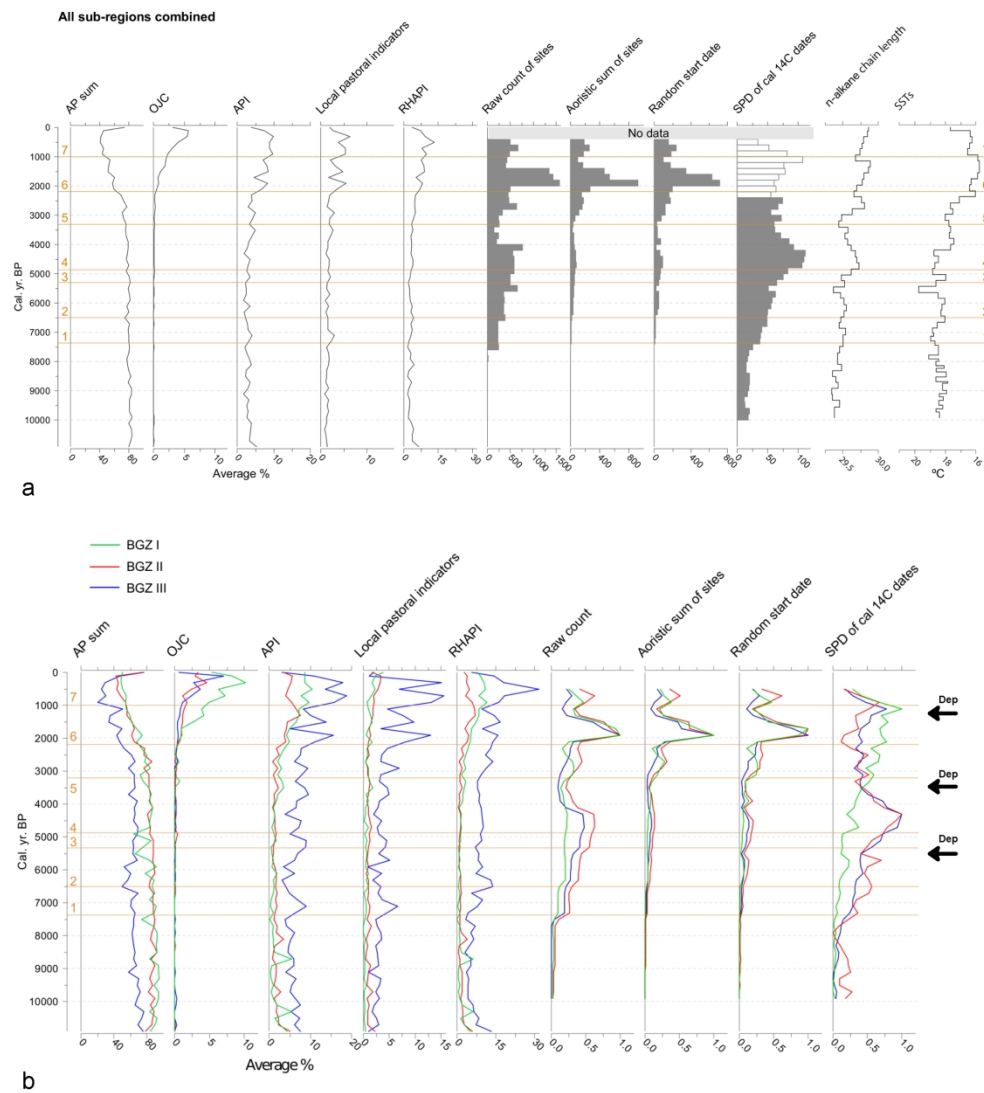


Fig 8 Pollen-inferred vegetation cluster groups and demographic proxies; a) BGZ II; b) BGZ III. Time windows for later periods where the SPD is no longer a reliable proxy are shown in white.

160x173mm (300 x 300 DPI)



42 Fig 9 a) Pollen indicator groups, two climate records from shallow marine core KSGC-31 in the Gulf of Lions
 43 (data from Jalali et al. 2016, 2017), and demographic proxies showing thresholds and depression phases
 44 mentioned in the text for Southern France all regions combined; b) Pollen indicator groups and demographic
 45 proxies showing thresholds and depression phases mentioned in the text for the three sub-regions. Time
 46 windows for later periods where the SPD is no longer a reliable proxy are shown in white.

47 209x234mm (300 x 300 DPI)

Table I. Cultural chronology of southern France in the Holocene.

Period	Absolute dates
Sauveterian Mesolithic	9700 – 6700/6600 BCE 11650 – 8650/8550 BP
Castelnovian Mesolithic	6700/6600 – 5600/5500 BCE 8650/8550 – 7550/7450 BP
Early Neolithic - Impressa	5900/5800 – 5600 BCE 7850/7750 – 7550 BP
Early Neolithic – Cardial/ Epicardial	5600/5500 – 4800 BCE 7550/7450 – 6750 BP
Early to Middle Neolithic transition	4800-4600 BCE 6750 – 6550 BP
Middle Neolithic–Prechassean (Fagien/St Uze)	4600 – 4400 BCE 6550 – 6350 BP
Middle Neolithic–Early Chassean	4400 - 4000 BCE 6350 – 5950 BP
Middle Neolithic–Late/ Tardi Chassean	4000 – 3600/3400 BCE 5590 – 3550/3350 BP
Late Neolithic I- St Ponien/Ferrières/Couronnien/Verasienl	3500/3400 – 3100/2900 BCE 5450/5350 – 5050/4850 BP
Late Neolithic II-Verazien II/Fontbousse/Rhône-Ouvèze	3000/2900 – 2500/2400 BCE 4950/4850 – 4450/4350 BP
Late Neolithic III-Rhodano-Provencal Bell Beaker	2500 – 2200/2150 BCE 4450 – 4150/4100 BP
Early Bronze Age I/ ceramics with barbed decor	2150 – 1900 BCE 4100 – 3850 BP
Early Bronze Age II	1900 – 1700 BCE 3850 – 3650 BP
Early Bronze Age III	1700 – 1600/1550 BCE 3650 – 3550/3500 BP
Middle Bronze Age I	1600/1550 – 1450 BCE 3550/3500 – 3400 BP
Middle Bronze Age II-III	1450 - 1350 BCE 3400 – 3300 BP
Late Bronze Age I	1350 – 1200 BCE 3300 – 3150 BP
Late Bronze Age IIa	1200 – 1150 BCE 3150 – 3100 BP
Late Bronze Age IIb	1150 – 1050/1025 BCE 3100 – 3000/2975 BP
Late Bronze Age IIIa	1050/1025 – 900 BCE 3000/2975 – 2850 BP
Late Bronze Age IIIb	900 – 800/750 BCE 2850 – 2750/2700 BP
Iron Age I	750-500 BCE 2700 – 2450 BP
Iron Age II- Early la Tène	500 – 300 BCE 2450 – 2250 BP
Iron Age II- Middle la Tène	300 – 200 BCE 2250 – 2150 BP
Iron Age II – Late La Tène	200 – 121 BCE 2150 – 2071 BP
Roman – High Empire	121 BCE – 300 CE 2071 – 1650 BP
Roman – Low Empire	300 CE – 458/493 CE 1650– 1492/1457 BP
Early Middle Age	493 – 900 CE 1457 – 1050 BP
Central Middle Age	900 – 1300 CE 1050 – 650 BP
Upper Middle Age	1300-1492 CE 650 – 458 BP

Cultural transitions are presented with variations corresponding to inter-regional differences: after Beeching A (2001), Denaire et al. (2011), Guilaine J & Manen C (2005), Guthertz X et Jallot L (1999), Lachenal T (2012), Lemerrier (2004), Vital J (2005, 2012).

Table II Southern France: fossil pollen sites.

Code	Site name	Latitude	Longitude	Sub-region	Elevation	Contributor	Site information	Citation
BAUXTC1	Marais de Baux1	43.69778	4.780278	1	0	Andrieu-Ponel	endoreic depression	Andrieu-Ponel et al. (2000) Vegetation History and Archaeobotany: 9, 71.
BAUXTC2	Marais de Baux2	43.69778	4.780278	1	0	Andrieu-Ponel	endoreic depression	Andrieu-Ponel et al. (2000) Vegetation History and Archaeobotany: 9, 71.
CAGNES	Cagnes	43.3934	7.091	1	0	Guillon	coast	Guillon S. (2014) Dynamique de la végétation alluviale côtière dans le Sud-Est de la France, PHD thesis, Univ. of Nice, 389p
CALADE1	La Calade	43.71583	4.686944	1	4	Andrieu-Ponel	marsh	Andrieu-Ponel et al. (2000) Holocene: 10, 341-355.
DESPOINT	Despoint	43.636901	4.137408	1	2	Guillon-Berger	Delta of Vidourle river, agricultural area	Blanchemanche et al., Unpublished intermediary report of ARMILIT ANR, 2006, 1p
EMBOU	Embouchac	43.566389	3.916667	1	1	EPD	lagoon, delta of Lez river	Puertas (1999) Bulletin de la Société préhistorique française, tome: 96, 15-20.
ETANG	Le Grand Etang de Suze-La-Rousse	44.35	5.233333	1	92	EPD	field with corn	Argant (1990) Documents du Laboratoire de Géologie de Lyon: 3, 1-199.
FOSES4	Marais de Fos	43.436667	4.936667	1	1	EPD	peat bog	Vella & Provansal (2000) Marine Geology: 170, 27-39.
MONTADY	Etang de Montady	43.1853	3.0654	1	20	Guillon-Berger	endoreic depression?	Guillon S. (2007) L'étang de Montady (Hérault), une séquence lacustro-palustre témoin de l'histoire environnementale et agraire languedocienne. Discussion autour de la transition Subboréal/ Subatlantique, In : Autour de l'étang de Montady. Espace, environnement et mise en valeur du milieu humide en Languedoc, des <i>oppida</i> à nos jours (J.L. Abbé dir). Unpublished PCR report, 43-47
OUVEIL2	Etang d'Ouveillan	43.266667	3	1	6	EPD	agricultural, cultivated area	Sanchez-Goñi (1995) in: Guilaine (ed.) Temps et espace dans le bassin de l'Aude du Néolithique à l'Age du Fer, CNRS, 265-275.

PB06	Palavas	43.50778	3.870833	1	-1	Azura	lagoon	Azura (2015) <i>Clim. Past</i> , 11, 1769-1784.
PITON	Piton	43.68333333	4.62361111	1	5	Baudouin	alluvial delta	Arnaud-Fassetta et al. (2005) <i>Zeitschrift für Geomorphologie</i> : 49, 455-484.
STSAU	Saint Sauveur	43.566389	3.916667	1	1	EPD	lagoon	Puertas (1997) Evolution de la végétation depuis le Dryas récent dans la plaine littorale de Montpellier (Hérault, France) à partir de l'analyse pollinique. Dynamique naturelle et anthropisation du milieu. Ph.D. Dissertation, Université de Franche-Comté, Besançon, France.
BAISSESC	Baïssescure	43.55	2.8	2	1000	EPD	big bog	de Beaulieu (1974) <i>Bulletin de la Société Languedocienne de Géographie</i> : 8, 347-358.
BIOT	Biot	43.8	7.1	2	863	EPD	valley	Nicol-Pichard & Dubard (1998) <i>Vegetation History and Archaeobotany</i> : 7, 11-15.
CORREO	Correo	44.508333	5.983056	2	1090	EPD	peat gutter	Nakagawa (1998) Pollen studies in the central meridional French Alps: Lateglacial and Holocene vegetation history. Ph.D. Dissertation of Biology and Ecology, University of Marseille III, 1-211.
GATIMORT	Tourbière de Gatimort	43.575278	2.785556	2	970	EPD	ombrotrophic peat	Pulido (2006) Anthropogenic impact on the postglacial vegetation dynamics in South Massif Central, France. Thesis of Palaeoecology. University of Marseille III, 1-308.
LANDE	Tourbière de la Lande	43.566667	2.966667	2	1040	EPD	peat	Pulido (2006) Anthropogenic impact on the postglacial vegetation dynamics in South Massif Central, France. Thesis of Palaeoecology. University of Marseille III, 1-308.
LAU1	Lac du Lauzon	44.675278	5.793333	2	1980	EPD	lake	Argant & Argant (2000) <i>Géologie Alpine</i> : 31, 61-71.
LLONG1	Lac Long Inférieur	44.057778	7.45	2	2114	EPD	lake with marginal fen	de Beaulieu (1977) Contribution pollenanalytique à l'histoire tardiglaciaire et Holocène de la végétation des Alpes méridionales françaises. Ph.D. Dissertation. Université d'Aix-Marseille, Marseille, France.
LUITEL	Col Luitel	45.088333	5.849722	2	1250	EPD	lake of the pass of Luitel	Wegmüller (1977) <i>Pollenanalytische Untersuchungen zur spät- und postglazialen Vegetationsgeschichte der französischen Alpen (Dauphiné)</i> . Verlag Paul Haupt Bern, 1-185.
MONTSEC2	Tourbière de Mont Sec	45.068889	5.806667	2	1130	EPD	peat bog	Nakagawa (1998) Pollen studies in the central meridional French Alps: Lateglacial and Holocene vegetation history. Ph.D. Dissertation of Biology and Ecology, University of Marseille III, 1-211.

MOUTON2	Lac Mouton	44.057778	7.444722	2	2175	EPD	lake	de Beaulieu (1977) Contribution pollenanalytique à l'histoire tardiglaciaire et Holocène de la végétation des Alpes méridionales françaises. Ph.D. Dissertation. Université d'Aix-Marseille, Marseille, France.
PELL79C2	Pelléautier	44.522222	6.183333	2	975	EPD	nowadays a lake due to a dam	de Beaulieu (1977) Contribution pollenanalytique à l'histoire tardiglaciaire et Holocène de la végétation des Alpes méridionales françaises. Ph.D. Dissertation. Université d'Aix-Marseille, Marseille, France.
PEUIL	Peuil Peat Bog	45.125	5.643611	2	970	EPD	peat bog	Nakagawa (1998) Pollen studies in the central meridional French Alps: Lateglacial and Holocene vegetation history. PhD. Dissertation of Biology and Ecology, University of Marseille III, 1-211.
PEYROUTA	Tourbière de la Peyroutarié	43.609444	2.931389	2	1054	EPD	peat	Pulido (2006) Anthropogenic impact on the postglacial vegetation dynamics in South Massif Central, France. Thesis of Palaeoecology. University of Marseille III, 1-308.
PRAVER	Lac de Praver	45.073611	5.856389	2	1170	EPD	oligotrophic lake with peat bog	Nakagawa (1998) Pollen studies in the central meridional French Alps: Lateglacial and Holocene vegetation history. PhD. Dissertation of Biology and Ecology, University of Marseille III, 1-211.
RAC20	Lake Racou	42.554167	2.008333	2	2000	EPD	mire	Guiter et al. (2005) Veget. Hist. Archaeobot: 14, 99-118.
RATZ81	Saint Julien de Ratz	45.348333	5.655278	2	673	EPD	lake	Clerc (1988) Recherches pollenanalytiques sur la paléo-écologie Tardiglaciaire et Holocène du Bas-Dauphiné. Ph.D. Dissertation. Université St. Jérôme, Marseille, France.
SABBION1	Sabbion	44.13	7.473333	2	2216	EPD	Peat ?	de Beaulieu, Jacques-Louis (2010): Pollen profile SABBION1, Sabbion, France. <i>European Pollen Database (EPD)</i> , PANGAEA, https://doi.org/10.1594/PANGAEA.739772
SJSL972	Lac Saint Léger	44.42	6.336389	2	1308	EPD	bog on the shore of the lake	de Beaulieu (1977) Contribution pollenanalytique à l'histoire tardiglaciaire et Holocène de la végétation des Alpes méridionales françaises. Ph.D. Dissertation. Université d'Aix-Marseille, Marseille, France.
SJSLS	Lac Saint Léger	44.42	6.336389	2	1308	EPD	bog on the shore of the lake	Digerfeldt et al. (1997) Palaeogeography, Palaeoclimatology, Palaeoecology: 136, 231-258.
VALPROV2	Vallon de Provence	44.391111	6.404167	2	2075	EPD	low marsh with	de Beaulieu (1977) Contribution pollenanalytique à l'histoire tardiglaciaire et Holocène de la végétation des Alpes

							Cyperaceae	méridionales françaises. Ph.D. Dissertation. Université d'Aix-Marseille, Marseille, France.
AMBY86	Hières sur Amby	45.790833	5.283333	3	227	EPD	agricultural area	Clerc (1988) Recherches pollenanalytiques sur la paléo-écologie Tardiglaciaire et Holocène du Bas-Dauphiné. Ph.D. Dissertation. Université St. Jérôme, Marseille, France.
CERINTB3	Lac Cerin	45.777222	5.561944	3	781	EPD	peat bog with little lake	Bossuet et al. (1996) Bulletin de la Société géologique de France: 167, 483-493.
CHIRENS1	Tourbière de Chirens	45.423333	5.561667	3	460	EPD	bog	Eicher et al. (1981) Quaternary Research: 15, 160-170.
CZE1	Marais de Charauze	45.368333	5.566944	3	375	EPD	marsh	Argant, Jaqueline (2010): Pollen profile CZE1, Marais de Charauze, France. <i>European Pollen Database (EPD)</i> , PANGAEA, https://doi.org/10.1594/PANGAEA.738766
HILAIRE2	Saint Hilaire du Rosier	45.070833	5.256667	3	190	EPD	marsh	de Beaulieu et al. (1982) Report and Proceedings of the Workshop held in Brussels: 108-113.
LEMPS83	Le Grand Lemps	45.473333	5.416667	3	680	EPD	woods	Clerc (1988) Recherches pollenanalytiques sur la paléo-écologie Tardiglaciaire et Holocène du Bas-Dauphiné. Ph.D. Dissertation. Université St. Jérôme, Marseille, France.
LEMPS86	Le Grand Lemps	45.473333	5.416667	3	680	EPD	woods	Clerc (1988) Recherches pollenanalytiques sur la paléo-écologie Tardiglaciaire et Holocène du Bas-Dauphiné. Ph.D. Dissertation. Université St. Jérôme, Marseille, France.
LORAS84	Loras	45.666389	5.243333	3	416	EPD	lake	Clerc, Jeanine (2010): Pollen profile LORAS84, Loras, France. <i>European Pollen Database (EPD)</i> , PANGAEA, https://doi.org/10.1594/PANGAEA.739484
MORAS	Moras	45.68194444	5.26833333	3	304	Doyen	lake	Doyen et al. (2013) Holocene: 23, 961-973.
PALADRU	Paladru	45.45	5.53333333	3	492	Begeot	lake	Doyen et al. (2016) Journal of Archaeological Science: Reports 7, 48-59.
SIXTE79	Saint Sixte	45.425833	5.628611	3	720	EPD	lake	Clerc (1988) Recherches pollenanalytiques sur la paléo-écologie Tardiglaciaire et Holocène du Bas-Dauphiné. Ph.D. Dissertation. Université St. Jérôme, Marseille, France.
SIXTE85	Saint Sixte	45.425833	5.628611	3	720	EPD	lake	Clerc (1988) Recherches pollenanalytiques sur la paléo-écologie Tardiglaciaire et Holocène du Bas-Dauphiné. Ph.D. Dissertation. Université St. Jérôme, Marseille, France.

1
2
3
4
5
6
7
8
9
10
11
12
13
14
15
16
17
18
19
20
21
22
23
24
25
26
27
28
29
30
31
32
33
34
35
36
37
38
39
40
41
42
43
44
45
46

For Peer Review

Table III. Matrix of Spearman's Rank Correlation Coefficients (R-values) between the pollen indicator groups and the demographic proxies for the period 10,000-600 Cal Yr BP (to 2400 Cal Yr BP for ^{14}C SPD) in Southern France.

	AP sum	OJC	API	Local Pastoral	RHAPI	Sites count	Aoristic sum	Random	^{14}C SPD
AP sum	1								
OJC	-0.76	1							
API	-0.78	0.62	1						
Local Pastoral	-0.68	0.55	0.86	1					
RHAPI	-0.92	0.72	0.79	0.65	1				
Sites count	-0.56	0.71	0.29	0.33	0.56	1			
Aoristic sum	-0.77	0.86	0.58	0.56	0.78	0.88	1		
Random	-0.78	0.84	0.63	0.61	0.81	0.81	0.98	1	
^{14}C SPD	-0.45	0.74	0.14	0.20	0.47	0.82	0.91	0.87	1

Statistically significant values in bold ($p < 0.05$).

Table IV. Matrix of Spearman's Rank Correlation Coefficients (R-values) between the pollen indicator groups and the demographic proxies for the period 10,000-600 Cal Yr BP (to 2400 Cal Yr BP for ¹⁴C SPD) in BGZ I.

	AP sum	OJC	API	Local Pastoral	RHAPI	Sites count	Aoristic sum	Random	¹⁴ C SPD
AP sum	1								
OJC	-0.44	1							
API	-0.43	0.56	1						
Local Pastoral	-0.53	0.43	0.86	1					
RHAPI	-0.67	0.56	0.55	0.54	1				
Sites count	-0.4	0.46	0.35	0.31	0.72	1			
Aoristic sum	-0.57	0.67	0.58	0.54	0.88	0.86	1		
Random	-0.56	0.65	0.6	0.58	0.86	0.8	0.98	1	
¹⁴ C SPD	-0.08	0.49	0.35	0.16	0.70	0.82	0.88	0.86	1

Statistically significant values in bold ($p < 0.05$).

Table V. Matrix of Spearman's Rank Correlation Coefficients (R-values) between the pollen indicator groups and the demographic proxies for the period 10,000-600 Cal Yr BP (to 2400 Cal Yr BP for ¹⁴C SPD) in BGZ II.

	AP sum	OJC	API	Local Pastoral	RHAPI	Sites count	Aoristic sum	Random	¹⁴ C SPD
AP sum	1								
OJC	-0.69	1							
API	-0.63	0.49	1						
Local Pastoral	-0.5	0.43	0.64	1					
RHAPI	-0.7	0.43	0.84	0.42	1				
Sites count	-0.48	0.68	0.16	0.36	0.1	1			
Aoristic sum	-0.69	0.81	0.35	0.42	0.3	0.9	1		
Random	-0.69	0.82	0.4	0.4	0.32	0.84	0.98	1	
¹⁴ C SPD	-0.35	0.60	-0.23	0.26	-0.30	0.79	0.81	0.78	1

Statistically significant values in bold ($p < 0.05$).

Table VI. Matrix of Spearman's Rank Correlation Coefficients (R-values) between the pollen indicator groups and the demographic proxies for the period 10,000-600 Cal Yr BP (to 2400 Cal Yr BP for ¹⁴C SPD) in BGZ III.

	AP sum	OJC	API	Local Pastoral	RHAPI	Sites count	Aoristic sum	Random	¹⁴ C SPD
AP sum	1								
OJC	-0.71	1							
API	-0.67	0.72	1						
Local Pastoral	-0.66	0.58	0.6	1					
RHAPI	-0.68	0.75	0.94	0.6	1				
Sites count	-0.79	0.82	0.67	0.65	0.67	1			
Aoristic sum	-0.79	0.82	0.75	0.72	0.76	0.95	1		
Random	-0.76	0.8	0.77	0.73	0.78	0.9	0.98	1	0
¹⁴ C SPD	-0.65	0.60	0.56	0.62	0.60	0.87	0.95	0.94	1

Statistically significant values in bold ($p < 0.05$).

Supplemental material 1

Radiocarbon dates

Radiocarbon dates from archaeological sites were compiled from existing online databases and electronic and print. A total of 3,507 uncalibrated radiocarbon dates from 1,056 sites have been collected. Below the sources from which the radiocarbon dates have been collected.

Databases/Datasets

BANADORA. Banque Nationale de Données Radiocarbone pour l'Europe et le Proche Orient, Centre de Datation par le Radiocarbone, CNRS Lyon:

<http://www.arar.mom.fr/banadora/>

CalPal - The Cologne Radiocarbon Calibration & Palaeoclimate Research Package.

Developed by Weninger, B., Jöris, O., and Danzeglocke, U: <http://monrepos-rgzm.de/forschung/ausstattung.html#calpal>

EUROEVOL. Manning, K; Timpson, A; Colledge, S; Crema, E; Shennan, S; (2015) The Cultural Evolution of Neolithic Europe. EUROEVOL Dataset:

<http://discovery.ucl.ac.uk/1469811/>

IRPA/KIK. Royal Institute for Cultural Heritage web based Radiocarbon database. Van Strydonck, M. and De Roock, E., 2011. Royal Institute for Cultural Heritage web-based radiocarbon database. *Radiocarbon*, 53(2), pp.367-370.

<http://c14.kikirpa.be/>

ORAU. Oxford Radiocarbon Accelerator Unit online database:

<https://c14.arch.ox.ac.uk/databases.html>

RADON. Martin Hinz, Martin Furholt, Johannes Müller, Dirk Raetzl-Fabian, Christoph Rinne, Karl-Göran Sjögren, Hans-Peter Wotzka, RADON - Radiocarbon dates online 2012. Central European database of ¹⁴C dates for the Neolithic and Early Bronze Age. www.jungsteinsite.de, 2012, 1-4: <http://radon.ufg.uni-kiel.de/>

The ¹⁴CARHU (RadioCARBON dates of Helsinki University):

<https://www.oasisnorth.org/carhu.html>

References

Agnès Caraglio, 2010. Entre Provence et Catalogne : approche comparative des dynamiques d'implantation des habitats à la fin du III^e millénaire avant notre ère. *Archéologie et Préhistoire*. <https://dumas.ccsd.cnrs.fr/dumas-00554854>

Ambert, P., 2003. Défense et illustration du Néolithique récent du Languedoc central, plus particulièrement de celui de la région Saint-Pons-Lodève. *Bulletin de la Société préhistorique française*, pp.357-374.

1
2
3 Angelin A., Picavet, R., Fernandes, P., 2014. Du Mésolithique au Néolithique ancien
4 en montagne. Étude lithique de deux stations alpines de « chasseurs » du Vercors :
5 Gerland et La Mare (Isère). In: I. Sénépart, F. Léandri, J. Cauliez, T. Perrin et É.
6 Thirault (Eds.), *Chronologie de la Préhistoire récente dans le Sud de la France.*
7 *Acquis 1992-2012. Actualité de la recherche, Actes des 10e Rencontres méridionales*
8 *de Préhistoire récente (Porticcio, 18-20 octobre 2012)*, Toulouse: Éd. Archives
9 d'Écologie Préhistorique, pp. 491-509.

10
11
12 Bérato, J., Borréani, M. and Laurier, F., 1994. Un habitat de l'Age du Fer sur les
13 pentes du Mont-Aurélien (Pourrières, Var). *Documents d'archéologie méridionale,*
14 *17(1)*, pp.267-280.

15
16
17 Bertran, P., Nourissat, S., Best, C. and Franc, O., 1998. Rôle des processus naturels
18 dans la constitution du site épipaléolithique et néolithique de la Duchère à Vaise
19 (Rhône)/Epipaleolithic, Mesolithic and Neolithic occupations of the site of La
20 Duchère at Vaise (Rhône): the role of natural processes in the formation of the site.
21 *Paléo*, 10(1), pp.211-232.

22
23
24 Billard, C., Bourhis, J.R., Desfossés, Y., Evin, J., Huault, M.F., Lefèbvre, D. and
25 Paulet-Locard, M.A., 1991. I. L'habitat des Florentins à Val-de-Reuil (Eure). *Gallia*
26 *préhistoire* 33(1), pp.140-171.

27
28
29 Binder, D. and Maggi, R., 2001. Le Néolithique ancien de l'arc liguro-provençal.
30 *Bulletin de la Société préhistorique française* 98(3), pp.411-422.

31
32
33 Bintz, P. and Evin, J., 2002. Événements bio-climatiques et peuplements du
34 Tardiglaciaire au début de l'Holocène dans les Alpes du nord Françaises [Bio-climatic
35 events and human settlements from the Lateglacial to the Holocene in the French
36 Northern Alps]. *Quaternaire*, 13(3), pp.279-287.

37
38
39 Bleu, S., « La Côte-Saint-André », *ADLFI. Archéologie de la France - Informations*
40 [En ligne], Rhône-Alpes, mis en ligne le 01 mars 2009, consulté le 15 juin 2018.
41 URL : <http://journals.openedition.org/adlfi/3448>

42
43
44 Borel, J.L., Brochier, J.L. and Druart, J.C., 1996. Séquences climatiques et
45 occupations du sol du VIIIe au XIe siècle dans le terroir de Collettière. Actes des
46 congrès de la Société d'archéologie médiévale, 5(1), pp.191-196.

47
48
49 Borréani, M., Chabal, L., Mathieu, L., Michel, J.M., Pasqualini, M. and Lippmann-
50 Provansal, M., 1992. Peuplement et histoire de l'environnement sur les îles d'Hyères
51 (Var). *Documents d'archéologie méridionale*, 15(1), pp.391-416.

52
53
54 Bouby, L., 2000. Production et consommation végétales au Bronze final dans les sites
55 littoraux languedociens. *Bulletin de la Société préhistorique française*, pp.583-594.

56
57
58 Capuzzo, G., Boaretto, E. and Barceló, J.A., 2014. EUBAR: A Database of 14 C
59 Measurements for the European Bronze Age. A Bayesian Analysis of 14 C-Dated
60 Archaeological Contexts from Northern Italy and Southern France. *Radiocarbon*
56(2), pp.851-869.

1
2
3 Carvalho, A.F., 2007. A neolitização do Portugal meridional: os exemplos do maciço
4 calcário estremenho e do Algarve ocidental. Unpublished PhD thesis, Universidade
5 do Algarve.
6

7
8 Cauliez, J., Blaise, E., Cade, C., Desse, J., Desse-Berset, N., Durrenmath, G.,
9 Gilabert, C., Martin, S. and Vella, C., 2006. Paysage et implantations du Néolithique
10 final à l'âge du Bronze ancien au Collet-Redon (Martigues–Bouches-du-Rhône). In
11 *6èmes Rencontres méridionales de Préhistoire récente* (Vol. 11, pp. 125-139).
12 Préhistoire du Sud-Ouest.
13

14
15 Cazes, J.P., 2010. Note sur un type de céramique glaçurée des Xe-XIe siècles en
16 Languedoc. *Archéologie du Midi médiéval*, 28(1), pp.103-113.
17

18
19 Colin, M.G., Schneider, L., Vidal, L. and Schwaller, M., 2007. Roujan-Medilium
20 (?) de l'Antiquité au Moyen Âge. De la fouille du quartier des sanctuaires à
21 l'identification d'une nouvelle agglomération de la cité de Béziers. *Revue*
22 *archéologique de Narbonnaise* 40(1), pp.117-183.
23

24
25 Cregut-Bonnoure, E., & Paccard, M. (1997). La faune à Saïga Tatarica de Chinchon I
26 (Saumanes, Vaucluse)[The Saïga Tatarica fauna from Chinchon J (Saumanes,
27 Vaucluse)]. *Quaternaire*, 8(4), 391-407.
28

29
30 Dedet, B., and Gauthey, J., « Lamelouze – Peyraube », *ADLFI. Archéologie de la*
31 *France - Informations* [En ligne], Languedoc-Roussillon, mis en ligne le 01 mars
32 2004, consulté le 04 juin 2018. URL : <http://journals.openedition.org/adlfi/11734>
33

34
35 Delibrias, G., Evin, J., and Thommeret, Y., 1982. Sommaire des datations ¹⁴C
36 concernant la préhistoire en France II -Dates parues de 1974 à 1982 Chapitre VI :
37 NÉOLITHIQUE : de environ 7000 BP à environ 4000. *Bulletin de la Société*
38 *préhistorique française* 79(6), 175-192.
39

40
41 Demolon, P., « Douai – Rue des Potiers », *ADLFI. Archéologie de la France -*
42 *Informations* [En ligne], Nord-Pas-de-Calais, mis en ligne le 01 mars 1997, consulté
43 le 15 juin 2018. URL : <http://journals.openedition.org/adlfi/10133>
44

45
46 Derbier, J., Rochet, Q., Bonaventure, B., Charbouillot, S., Collomb, C., Collombet, J.
47 and Poirot, A., 2014. *Chaponost, Place Maréchal Foch-Place du 8 mai 1945*
48 (Doctoral dissertation, Archeodunum).
49

50
51 Escallon, G., Furestier, R., Lachenal, T., Convertini, F. and Forest, V., 2008. Le parc
52 Georges Besse II: un site du Bronze ancien épicanpaniforme à Nîmes (Gard).
53 *Bulletin de la Société préhistorique française*, pp.517-537.
54

55
56 Fahlke, J.M., 2009. Der Austausch der terrestrischen Säugetierfauna an der
57 Pleistozän/Holozän-Grenze in Mitteleuropa. Universitäts-und Landesbibliothek Bonn,
58 Bonn, Germany.
59

60
61 Gaillard, A., Kacki, S., Puig, C., Bénézet, J. and Corrochano, A., 2010. Premiers
62 résultats concernant le site des Jardins de Saint-Benoît (Saint-Laurent-de-la-
63 Cabrerisse, Aude), pôle religieux et funéraire des Corbières. *Archéologie du Midi*
64 *médiéval*, 28(1), pp. 209-218.

1
2
3 Gailledrat, E., Poupet, P., and Jallet, F. « Mailhac – Le Traversant », *ADLFI*.
4 *Archéologie de la France - Informations* [En ligne], Languedoc-Roussillon, mis en
5 ligne le 01 mars 2004, consulté le 04 juin 2018. URL:
6 <http://journals.openedition.org/adlfi/12025>
7

8
9 Gardes, P., 1995. Proto-urbanisme et mutation sociale dans la vallée de l'Èbre à la
10 charnière de l'Âge du Bronze et de l'Âge du Fer: quelques réflexions générales.
11 *Mélanges de la Casa de Velázquez*, 31(1), pp.7-30.
12

13 Gascó, J., 2014. Dater par le radiocarbone les âges du Bronze et du Fer : exemples
14 méridionaux. In: I. Sénépart, F. Leandri, J. Cauliez, T. Perrin and Éric Thiraul (Eds.),
15 *Chronologie de la Préhistoire récente dans le Sud de la France. Acquis 1992-2012.*
16 *Actualité de la recherche. Actes des 10e Rencontres Méridionales de Préhistoire*
17 *Récente, Porticcio*, 18 au 20 octobre 2012. Toulouse: Archives d'Écologie
18 Préhistorique, 257-274.
19

20
21 Georjon, C., Forest, V. and Raux, A., 1999. Le site de La Roquette à Tresques (Gard)
22 et le Néolithique final du bassin bas rhodanien. *Gallia préhistoire* 41(1), pp.253-297.
23

24 Girdland-Flink, L., 2013. *Investigating patterns of animal domestication using*
25 *ancient DNA* (Doctoral dissertation, Durham University).
26

27
28 Guilbert, R., 2003. Les systèmes de débitage de trois sites sauveterriens dans le Sud-
29 Est de la France. *Bulletin de la Société préhistorique française*, pp.463-478.
30

31 Hesnard, A., 1994. Une nouvelle fouille du port de Marseille, place Jules-Verne.
32 *Comptes rendus des séances de l'Académie des Inscriptions et Belles-Lettres*, 138(1),
33 pp.195-217.
34

35 Isoardi, D., Mocci, F., and Walsh, K. « Un rempart à agger dans le sud de la France ?
36 L'oppidum du Castellar (Cadenet, Vaucluse) », *Documents d'archéologie*
37 *méridionale* [En ligne], 32 | 2009, mis en ligne le 15 septembre 2013, consulté le 04
38 juin 2018. URL: <http://journals.openedition.org/dam/1916>
39

40
41 Jallot, L., 2014. Le site de la colline Saint-Michel (Montpellier, Languedoc): la
42 question de la transition Néolithique final 2-3. In: I. Sénépart, F. Leandri, J. Cauliez,
43 T. Perrin and Éric Thiraul (Eds.), *Chronologie de la Préhistoire récente dans le Sud*
44 *de la France. Acquis 1992-2012. Actualité de la recherche. Actes des 10e Rencontres*
45 *Méridionales de Préhistoire Récente, Porticcio*, 18 au 20 octobre 2012. Toulouse:
46 Archives d'Écologie Préhistorique, 87-136.
47

48
49 Jouneau, D. 2014. L'habitat médiéval d'Arassieux (Colombier-Saugnieu, Rhône).
50 Rapport Final d'Opération (Archeodunum).
51

52 Lachenal, T., 2014. Chronologie de l'âge du Bronze en Provence. In: I. Sénépart, F.
53 Leandri, J. Cauliez, T. Perrin and Éric Thiraul (Eds.), *Chronologie de la Préhistoire*
54 *récente dans le Sud de la France. Acquis 1992-2012. Actualité de la recherche. Actes*
55 *des 10e Rencontres Méridionales de Préhistoire Récente, Porticcio*, 18 au 20 octobre
56 2012. Toulouse: Archives d'Écologie Préhistorique, 197-220.
57
58
59
60

1
2
3 Lemercier, O., Furestier, R., Gadbois-Langevin, R. and Paulsson, B.S., 2014.
4 Chronologie et périodisation des campaniformes en France méditerranéenne. In: I.
5 Sénépart, F. Leandri, J. Cauliez, T. Perrin and Éric Thiraul (Eds.), *Chronologie de la*
6 *Préhistoire récente dans le Sud de la France. Acquis 1992-2012. Actualité de la*
7 *recherche. Actes des 10e Rencontres Méridionales de Préhistoire Récente, Porticcio,*
8 *18 au 20 octobre 2012.* Toulouse: Archives d'Écologie Préhistorique, 175-196.

9
10
11 Livache, M. and Brochier, J.É., 2003. L'évolution des industries pléni et
12 tardiglaciaires en~ roGence et dans le bassin bas-rhodanien, lignées et convergences.
13 In RSP (Vol. 53, pp. 37-55).

14
15
16 Luzi, C., and Courtin, J., 2001. La céramique des niveaux préchasséens de la Baume
17 Fontbrégoua (Salernes, Var). *Bulletin de la Société préhistorique française* 98(3), pp.
18 471-484.

19
20 Manen, C., Vigne, J.D., Loirat, D. and Bouby, L., 2001. L'Aspre del Paradis à
21 Corneilla-del-Vercol (Pyrénées-Orientales): contribution à l'étude du Néolithique
22 ancien et final roussillonnais. *Bulletin de la Société préhistorique française* 98(3), pp.
23 505-528.

24
25
26 Manen, C. and Sabatier, P., 2003. Chronique radiocarbone de la néolithisation en
27 Méditerranée nord-occidentale. *Bulletin de la Société préhistorique française* 100(3),
28 pp. 479-504.

29
30 Maufras, O. and Ratsimba, A., 2011. La céramique médiévale du Mas de Vignoles
31 XV à Nîmes (Gard): contribution à la caractérisation des VIIIe-Xe siècles nîmois.
32 *Archéologie du Midi médiéval*, 29(1), pp.57-93.

33
34
35 Michel, J. and Sendra, B., 2014. Les sépultures chasséennes en contexte d'habitat de
36 plein air du site de Saint-Antoine II à Saint-Aunès (Hérault). In: I. Sénépart, F.
37 Leandri, J. Cauliez, T. Perrin and Éric Thiraul (Eds.), *Chronologie de la Préhistoire*
38 *récente dans le Sud de la France. Acquis 1992-2012. Actualité de la recherche. Actes*
39 *des 10e Rencontres Méridionales de Préhistoire Récente, Porticcio, 18 au 20 octobre*
40 *2012.* Toulouse: Archives d'Écologie Préhistorique, 549-568.

41
42
43 Florence Mocci, Bérengère Perez et Vincent Dumas, « Puyloubier – Richeaume
44 XIII », *ADLFI. Archéologie de la France - Informations* [En ligne], Provence-Alpes-
45 Côte d'Azur, mis en ligne le 01 mars 2007, consulté le 15 juin 2018. URL :
46 <http://journals.openedition.org/adlfi/6488>

47
48
49 Morhange, C., Hesnard, A., Laborel, J. and Prone, A., 1995. Déplacement des lignes
50 de rivage et mobilité du plan d'eau sur la rive nord du Lacydon de Marseille.
51 *Méditerranée* 82(3), pp.71-76.

52
53 Moreau, C. et al. 2013. Savasse. A7 – Protection de la ressource en eau – Section 1.
54 Rapport d'opération d'archéologie préventive (Archeodunum)

55
56 Moreau, C. et al. 2013. Simiane-Collongue - Bouches-du-Rhône (13). Avenue
57 Général de Gaulle - Roussillon. Rapport d'opération d'archéologie préventive
58 (Dossier 10409.2012-347, Archeodunum)

1
2
3 Moreau, C., Linton, J. and Affolter, J., 2014. Continuités et variations entre le
4 Néolithique final et le Bronze ancien en moyenne vallée du Rhône. L'apport de
5 l'occupation structurée et stratifiée de Savasse (Drôme). In: I. Sénépart, F. Leandri, J.
6 Cauliez, T. Perrin and Éric Thiraul (Eds.), *Chronologie de la Préhistoire récente*
7 *dans le Sud de la France. Acquis 1992-2012. Actualité de la recherche. Actes des 10e*
8 *Rencontres Méridionales de Préhistoire Récente, Porticcio, 18 au 20 octobre 2012.*
9 Toulouse: Archives d'Écologie Préhistorique, 159-174.

10
11
12 Motte, S., Blaizot, F., Bonnet, C., Cécillon, C., Orengo, L., Plantevin, C. and
13 Vaireaux, F., 2009. *Contribution à la topographie antique de Lugdunum: la porte*
14 *monumentale et l'espace funéraire du site de la montée de la Butte* (No. Tome 58, pp.
15 325-380). Société archéologique de l'Est.

16
17
18 Oberlin, C. and Evin, J., 1996. Utilisation des datations radiocarbone pour la période
19 médiévale: quelques exemples.[The use of radiocarbon dating for the medieval
20 period: some examples]. *Supplément à la Revue archéologique du centre de la France*
21 *11(1)*, pp.243-250.

22
23
24 Onoratini, G., Mafart, B., Joris, C. and Baroni, I., 1997. Les occupations humaines de
25 la grotte de l'Adaouste (Jouques, Bouches-du-Rhône)[The human occupations of
26 Adaouste cave (Jouques, Bouches-du-Rhône)]. *Quaternaire*, 8(2), pp.175-187.

27
28 Paulsson, B.S., 2017. Time and stone: the emergence and development of megaliths
29 and megalithic societies in Europe. Oxford: Archaeopress.

30
31 Perrin, T., 2014. Méthodes pour l'appréhension raisonnée d'une série de dates
32 radiocarbone: de l'histogramme cumulatif à la modélisation bayésienne. In: I.
33 Sénépart, F. Leandri, J. Cauliez, T. Perrin and Éric Thiraul (Eds.), *Chronologie de la*
34 *Préhistoire récente dans le Sud de la France. Acquis 1992-2012. Actualité de la*
35 *recherche. Actes des 10e Rencontres Méridionales de Préhistoire Récente, Porticcio,*
36 *18 au 20 octobre 2012.* Toulouse: Archives d'Écologie Préhistorique, 11-22.

37
38
39 Perrin, T., Marchand, G., Allard, P., Binder, D., Collina, C., Puchol, O.G. and
40 Valdeyron, N., 2009. Le second Mésolithique d'Europe occidentale: origines et
41 gradient chronologique (The late Mesolithic of Western Europe: origins and
42 chronological stages). In *Annales de la Fondation Fyssen* (Vol. 24, pp. 160-176).

43
44
45 Pion, G., 1997. L'abri de la Fru à Saint-Christophe-la-Grotte (Savoie): l'Azilien ancien
46 du début de l'Alleröd. *Bulletin de la Société préhistorique française*, pp.319-326.

47
48
49 Provansal, M., 1991. Variations verticales du trait de côte en Provence depuis 5 000
50 ans. Quelques données nouvelles. *Méditerranée*, 74(4), pp.15-22.

51
52
53 Provansal, M., Bertonecello, F. and Gili, G., 2006. Dynamiques morpho-sédimentaires
54 et peuplement sur le Rocher de Roquebrune-sur-Argens (Var). *ArcheoSciences.*
55 *Revue d'archéométrie*, (30), pp.173-180.

56
57
58 Puertas, O., 1998. Perception palynologique de la gestion du paysage autour de la cité
59 protohistorique de Lattara (Lattes, France). *Revue d'archéométrie*, 22(1), pp.23-27.

60
61 Remicourt, M., Andrieu-Ponel, V., Audibert, C., Baradat, A., Battentier, J., Blaise, E.,
62 Bonnardin, S., Caverne, J.B., Fernandes, P., Furestier, R. and Girard, B., 2014. Les

1
2
3 occupations pré-et protohistoriques du Clos de Roque à Saint-Maximin-la-Sainte-
4 Baume dans le Var. In: I. Sénépart, F. Leandri, J. Cauliez, T. Perrin and Éric Thiraul
5 (Eds.), *Chronologie de la Préhistoire récente dans le Sud de la France. Acquis 1992-*
6 *2012. Actualité de la recherche. Actes des 10e Rencontres Méridionales de*
7 *Préhistoire Récente, Porticcio, 18 au 20 octobre 2012.* Toulouse: Archives
8 d'Écologie Préhistorique, 523-548.
9

10
11 Thiébault, S., 1991. Approche de l'environnement vegetal préhistorique pendant la fin
12 du Tardiglaciaire et l'Holocène entre Alpes et Jura par l'analyse anthracologique.
13 *Quaternaire*, 2(1), pp.49-58.
14

15
16 Thiercelin-Ferber, F., 2012. Route d'Espeluche Aménagement et extension du stade
17 Beaulieu. *Inrap Rhône-Alpes/Auvergne*.
18

19
20 Van Willigen, S., 2004. Aspects culturels de la néolithisation en Méditerranée
21 occidentale: le Cardial et l'Épicardial. *Bulletin de la Société préhistorique française*,
22 pp.463-495.
23

24
25 Vaquer, J. and Ruas, M.P., 2009. La grotte de l'Abeurador Félines-Minervois
26 (Hérault): occupations humaines et environnement du Tardiglaciaire à l'Holocène. *De*
27 *Méditerranée et d'ailleurs...*, *Mélanges offerts à Jean Guilaine. Archives d'Ecologie*
28 *Préhistorique, Toulouse*, pp.761-792.
29

30
31 Vaquer, J., Jedikian, G., Carrère, I. and Marival, P., 2003. La Salle, Carcassonne
32 (Aude). Un habitat de plein air du groupe de Bize. *Bulletin de la Société préhistorique*
33 *française*, pp.323-351.
34

35
36 Vella, C. and Bourcier, M., 1998. Stades ultimes de la montée holocène du niveau
37 marin et subsidence tectonique dans le golfe de Fos (Provence, France)/Last stages of
38 Holocene sea-level rise and tectonic subsidence in the Gulf of Fos (Provence, France).
39 *Géomorphologie: relief, processus, environnement* 4(2), pp.141-154.
40

41
42 Vella, C., Provansal, M., Long, L. and Bourcier, M., 2000. Contexte
43 géomorphologique de trois ports antiques provençaux: Fos, Les Laurons, Olbia.
44 *Méditerranée* 94(1), pp.39-46.
45

46
47 Veyrac, A. and Pène, J.M., 1994. L'Augusteum de la fontaine de Nîmes: etude
48 archéologique du bassin de la source et de la canalisation souterraine ouest. *Revue*
49 *archéologique de Narbonnaise* 27(1), pp. 121-163.
50

51
52 Vital, J., 1999. Identification du Bronze moyen-récent en Provence et en Méditerranée
53 nord-occidentale. *Documents d'Archéologie méridionale*, 22(22), pp.7-115.
54

55
56 Vital, J., 2008. La séquence Néolithique final-Bronze ancien dans l'axe rhodanien:
57 enseignements chronométriques et perspectives culturelles. *Bulletin de la Société*
58 *préhistorique française*, pp.539-554.
59

60
Vital, J., Brochier, J.L., Durand, J., Prost, D., Reynier, P. and Rimbault, S., 1999.
Roynac le Serre 1 (Drôme): une nouvelle séquence holocène en Valdaine et ses
occupations des Âges des métaux. *Bulletin de la Société préhistorique française*,
pp.225-240.

1
2
3 Vital, J., Bouby, L., Jallet, F. and Rey, P.J., 2007. Un autre regard sur le gisement du
4 boulevard périphérique nord de Lyon (Rhône) au Néolithique et à l'âge du Bronze.
5 Gallia préhistoire, 49(1), pp.1-126.
6

7
8 van Willigen, S., D'Anna, A., Renault, S. and Sargiano, J.P., 2011. Le Sud-Est de la
9 France entre 4400 et 3400 avant notre ère. Sériation céramique et outillage lithique.
10 *Préhistoires méditerranéennes*, (2).
11

12 van Willigen, S., Brochier, J.É., Renault, S. and Sargiano, J.P., 2014. Chronologie
13 relative et chronologie absolue du Néolithique moyen dans le sud-est de la France:
14 l'apport de l'analyse des données et de la modélisation chronologique bayésienne. In:
15 I. Sénépart, F. Leandri, J. Cauliez, T. Perrin and Éric Thiraul (Eds.), *Chronologie de*
16 *la Préhistoire récente dans le Sud de la France. Acquis 1992-2012. Actualité de la*
17 *recherche. Actes des 10e Rencontres Méridionales de Préhistoire Récente, Porticcio,*
18 *18 au 20 octobre 2012.* Toulouse: Archives d'Écologie Préhistorique, 63-74.
19
20
21
22
23
24
25
26
27
28
29
30
31
32
33
34
35
36
37
38
39
40
41
42
43
44
45
46
47
48
49
50
51
52
53
54
55
56
57
58
59
60

Archaeological settlement data

Archaeological settlement data sites were compiled from the series of archaeological reports Bilan Scientifique Regional published by the Direction Régional des Affaires Culturelles (DRAC). A total of 2,944 archaeological sites and 4,974 occupation phases have been collected from 45 reports published between 2001 and 2015. Below the sources from which the archaeological sites have been collected in the regions of Languedoc-Roussillon, Provence-Alpes-Côte d'Azur, and Rhône-Alpes.

Online sources

DRAC Provence-Alpes-Côte d'Azur (PACA):

<http://www.culture.gouv.fr/Regions/Drac-Paca/Ressources/Archeologie/Bilans-scientifiques-regionaux>

DRAC Auvergne-Rhône Alpes: <http://www.culture.gouv.fr/Regions/Drac-Auvergne-Rhone-Alpes/Publications/Archeologie-bilan-scientifique-en-Rhone-Alpes>

DRAC Languedoc-Roussillon: <http://www.culture.gouv.fr/Regions/Drac-Occitanie/Ressources-documentaires/Publications/Bilan-scientifique-regional-BSR>