

## **Friedel oscillations in graphene sublattice asymmetry in doping**

**Lawlor, J. A.; Power, Stephen; Ferreira, M.S.**

*Published in:*  
Physical Review B (Condensed Matter and Materials Physics)

*Link to article, DOI:*  
[10.1103/PhysRevB.88.205416](https://doi.org/10.1103/PhysRevB.88.205416)

*Publication date:*  
2013

*Document Version*  
Publisher's PDF, also known as Version of record

[Link back to DTU Orbit](#)

*Citation (APA):*  
Lawlor, J. A., Power, S. R., & Ferreira, M. S. (2013). Friedel oscillations in graphene: sublattice asymmetry in doping. *Physical Review B (Condensed Matter and Materials Physics)*, 88(20), 205416. DOI: 10.1103/PhysRevB.88.205416

## **DTU Library** Technical Information Center of Denmark

---

### **General rights**

Copyright and moral rights for the publications made accessible in the public portal are retained by the authors and/or other copyright owners and it is a condition of accessing publications that users recognise and abide by the legal requirements associated with these rights.

- Users may download and print one copy of any publication from the public portal for the purpose of private study or research.
- You may not further distribute the material or use it for any profit-making activity or commercial gain
- You may freely distribute the URL identifying the publication in the public portal

If you believe that this document breaches copyright please contact us providing details, and we will remove access to the work immediately and investigate your claim.

**Friedel oscillations in graphene: Sublattice asymmetry in doping**J. A. Lawlor,<sup>1</sup> S. R. Power,<sup>2,\*</sup> and M. S. Ferreira<sup>1,3</sup><sup>1</sup>*School of Physics, Trinity College Dublin, Dublin 2, Ireland*<sup>2</sup>*Center for Nanostructured Graphene (CNG), DTU Nanotech, Department of Micro- and Nanotechnology, Technical University of Denmark, DK-2800 Kongens Lyngby, Denmark*<sup>3</sup>*CRANN, Trinity College Dublin, Dublin 2, Ireland*

(Received 13 September 2013; published 13 November 2013)

Symmetry breaking perturbations in an electronically conducting medium are known to produce Friedel oscillations in various physical quantities of an otherwise pristine material. Here we show in a mathematically transparent fashion that Friedel oscillations in graphene have a strong sublattice asymmetry. As a result, the presence of impurities and/or defects may impact the distinct graphene sublattices very differently. Furthermore, such an asymmetry can be used to explain the recent observations that nitrogen atoms and dimers are not randomly distributed in graphene but prefer to occupy one of its two distinct sublattices. We argue that this feature is not exclusive of nitrogen and that it can be seen with other substitutional dopants.

DOI: [10.1103/PhysRevB.88.205416](https://doi.org/10.1103/PhysRevB.88.205416)

PACS number(s): 81.05.ue, 71.55.-i, 73.22.Pr, 61.50.Ah

**I. INTRODUCTION**

Nanoscale characterization techniques are fundamentally based on the changes experienced by otherwise pristine materials in the presence of symmetry-breaking impurities and defects. Such symmetry breaking, for example in a Fermi gas, induces perturbations in the electronic environment of the gas through the scattering of its electrons.<sup>1</sup> These changes in the electronic scattering manifest as spatial oscillations called Friedel oscillations (FOs). They are present in quantities like the local density of states ( $\rho$ ) and the carrier density ( $n$ ), which radiate away from the location of the symmetry-breaking perturbation and decay with the distance from the perturbation  $D$ . The decay rate is linked directly to the dimensionality of the system and to some extent the resolution of the measurement. Much attention has been focused recently on such symmetry breaking in graphene,<sup>2-9</sup> a hexagonal lattice of  $sp^2$  hybridized carbon with a wide range of unique properties.<sup>10</sup> Figure 1 shows a schematic of the lattice with several different kinds of impurities, where atomic sites in the two interconnected triangular sublattices composing graphene are represented by black and white symbols. In graphene, the vanishing of the density of states at the Dirac point affects the decay rate of the change in carrier density ( $\Delta n$ ) from  $D^{-2}$ , expected in a 2D system, to a faster  $D^{-3}$  rate for ungated/undoped graphene, and the oscillations disappear due to their commensurability with the lattice spacing.<sup>2,4,8</sup>

Previous studies examining the analytical behavior of  $\Delta n$  FOs in graphene have generally relied on a linearization of the electronic band structure near the Dirac points and the introduction of a momentum cutoff.<sup>2-4,8</sup> In the current paper, we present an alternative framework which removes these assumptions and matches numerical results exactly in the long-distance limit and over large energy ranges, paving the way for applications to other electronic quantities and graphenelike materials. The methodology we use is similar to that used to describe the Ruderman-Kittel-Kasuya-Yosida (RKKY) interaction in graphene,<sup>11,12</sup> a coupling effect between magnetic impurities which has been studied extensively and, like FOs, is another manifestation of symmetry breaking, making this work a natural extension of those techniques.

This methodology is applied to a range of commonly investigated impurity configurations, namely single and double substitutional impurities, unrelaxed vacancies, and realistic instances of the more commonly found top- and bridge-adsorbed atoms. The analytical expressions derived for the fluctuations in electron density for these impurities are corroborated with numerical calculations to confirm the predicted behavior. We note how important features of the FO are dictated by the bipartite nature of the graphene lattice and furthermore, that different behaviors are observed for adsorbed impurities connecting symmetrically or asymmetrically to the two sublattices in graphene. The framework is extended to consider similar oscillations which occur in the formation energy of two impurities introduced into the graphene lattice in close proximity to each other. Such FOs in formation energy are consistent with recent experimental findings of sublattice-asymmetric doping of nitrogen substitutional impurities in graphene.<sup>13,14</sup> The ability to dope one sublattice of graphene preferentially opens many possibilities, such as the opening of a band gap<sup>15</sup> and spin-polarized electron transport,<sup>16</sup> and it is very interesting that such behavior may be the manifestation of the strong sublattice dependence seen in FOs in graphene.

The paper is organized as follows. Section II introduces the relevant mathematical methods required, in particular the Green functions for graphene and the perturbations associated with different impurity configurations. Section III details the analytic approximations for the FOs in  $\Delta n$  for the range of impurity type shown in Fig. 1 and compares their predictions to fully numerical calculations. As an application of our methodology, Sec. IV investigates the appearance of sublattice asymmetry in nitrogen-doped graphene and presents a simple tight-binding model for the long-range sublattice ordering witnessed in recent experiments.

**II. METHODS****A. Green functions**

We begin by outlining the Green functions (GFs) methods which play a central role in our approach as the Friedel oscillations in electron density and local density of states,

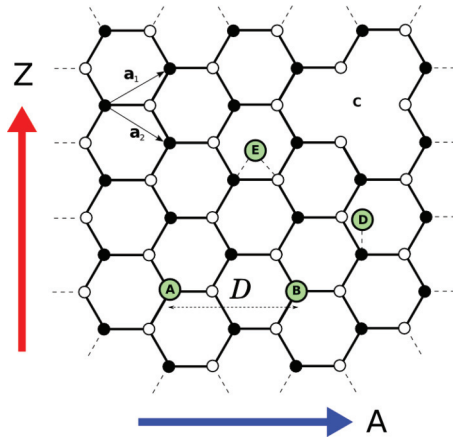


FIG. 1. (Color online) Schematic of a graphene lattice with impurity bonding types, shown with the lattice vectors  $\mathbf{a}_1$  and  $\mathbf{a}_2$ . Graphene can be thought of as two interpenetrating triangular sublattices, black ( $\bullet$ ) and white ( $\circ$ ). Nearest neighbor atoms are separated by a distance of  $a = 1.42 \text{ \AA}$ . Shown are two substitutional impurities (A and B) separated by distance  $D = 1$ , equivalent to  $3a$ , in the armchair direction, and also examples of an unrelaxed vacancy (C), a top-adsorbed adatom (D) and a bridge-adsorbed adatom (E).

$\Delta\rho$  and  $\Delta n$ , respectively, are directly obtainable using them. The retarded single-body GF,  $\mathcal{G}_{ij}$ , between two cells  $i$  and  $j$  in the pristine lattice is calculated through diagonalization of the nearest-neighbor tight-binding Hamiltonian using Bloch's theorem and can be expressed as an integral over the Brillouin zone<sup>11</sup>

$$\mathcal{G}_{ij}(E, \mathbf{r}) = \iint_{B.Z.} \frac{d\mathbf{k}^2}{2\pi^2} \frac{e^{i\mathbf{k}\cdot\mathbf{r}}}{E^2 - t^2|f(\mathbf{k})|^2} \begin{bmatrix} E & tf(\mathbf{k}) \\ tf^*(\mathbf{k}) & E \end{bmatrix}, \quad (1)$$

where the energy  $E$  includes an infinitesimal positive imaginary part,  $t = -2.7 \text{ eV}$  is the pristine graphene lattice hopping integral,  $\mathbf{r} = m\mathbf{a}_1 + n\mathbf{a}_2$  (where  $m, n \in \mathbb{Z}$ ) is the spatial separation of the unit cells  $i$  and  $j$  containing the relevant sites which is expressed in terms of the lattice vectors  $\mathbf{a}_1$  and  $\mathbf{a}_2$  shown in Fig. 1 and the variable  $f(\mathbf{k}) = 1 + e^{-i\mathbf{k}\cdot\mathbf{a}_1} + e^{-i\mathbf{k}\cdot\mathbf{a}_2}$ . In our analytic work, we principally examine armchair direction separations, defined by  $m = n$  and work in distance units of  $\frac{m+n}{2}$ . The matrix form of Eq. (1) captures the intersublattice nature of the GF calculation between the two sites in the graphene unit cell, such that

$$\mathcal{G}_{ij}(E, \mathbf{r}) = \begin{bmatrix} g_{ij}^{\bullet\bullet}(E, \mathbf{r}) & g_{ij}^{\bullet\circ}(E, \mathbf{r}) \\ g_{ij}^{\circ\bullet}(E, \mathbf{r}) & g_{ij}^{\circ\circ}(E, \mathbf{r}) \end{bmatrix},$$

where  $g_{ij}^{s_1, s_2}$  is the pristine lattice GF from the  $s_1$  sublattice site in cell  $i$  to the  $s_2$  sublattice site in cell  $j$ . For conciseness we will omit the sublattice indices from hereon and use  $g_{ij}$  to denote the pristine lattice GF between two sites on the same sublattice sites unless specified otherwise.

To aid numerical calculation one of the two integrals in Eq. (1) can be solved analytically, and in some cases it is possible to approximate the second integral using the stationary phase approximation (SPA).<sup>11</sup> These methods take advantage of the highly oscillatory nature of the integrand for large  $\mathbf{r}$  and to approximate the integral at values near the

stationary points of the phase, ignoring the highly oscillating parts which mostly cancel each other. The advantage of the SPA is that it is applicable across the entire energy band, with no intrinsic momentum or energy cutoffs, although maximum achievable experimental gating (through ion gels) is limited to  $E_F \sim 0.5|t|$  currently.<sup>17</sup> Applying the SPA assumption to  $g_{ij}$  gives us a sum of terms in the form

$$g_{ij} = \frac{\mathcal{A}(E)e^{iQ(E)D}}{\sqrt{D}}, \quad (2)$$

where the coefficients  $\mathcal{A}(E)$  are dependent on the sublattice configuration of sites  $i$  and  $j$  and the direction between them. For two sites on the same sublattice separated in the armchair direction we find

$$\mathcal{A}(E) = -\sqrt{\frac{2i}{\pi}} \frac{\sqrt{E}}{\sqrt{(E^2 + 3t^2)\sqrt{t^2 - E^2}}}, \quad (3)$$

valid for  $|E| < |t|$  where  $D = \frac{m+n}{2}$  is the separation between the sites  $i$  and  $j$  and  $Q(E)$  is associated with the Fermi wave vector in the armchair direction. This approximation works best for separations beyond a few lattice spacings in the armchair and zigzag directions as other directions are not always analytically solvable.<sup>11</sup> For an armchair separation of  $D = 5$  the agreement between analytic and numerical calculations of  $g_{ij}$  is excellent, with less than 1% deviation over 95% of the energy spectrum.

To calculate the fluctuations in properties of a system when an impurity is introduced, we will usually require the difference between the GFs describing the pristine ( $\hat{g}$ ) and perturbed ( $\hat{G}$ ) systems. This can be expressed, using the Dyson equation,<sup>18</sup> as

$$\Delta\hat{G} = \hat{G} - \hat{g} = (\hat{I} - \hat{g}\hat{V})^{-1}\hat{g} - \hat{g}, \quad (4)$$

where  $\hat{V}$  describes the potential applied to the pristine system to introduce the impurity. By finding suitable descriptions and parametrizations for different impurities in the graphene lattice we can find directly the change in the corresponding perturbed lattice GF  $\Delta\hat{G}$  and also how the  $\rho$  and  $n$  are altered from the pristine system. Exact parametrization, however, is not that important when considering the qualitative features of the phenomena we investigate here. More precise parametrization can be found, for example, by comparison to DFT calculations.<sup>19</sup>

## B. Impurities

In this section we present the types of impurities that will be considered and the respective perturbative potentials used to describe them. Substitutional impurities in graphene, shown schematically by A and B in Fig. 1, occur when single carbon atoms are replaced with dopant atoms such as nitrogen. The simplest way to model them is by introducing a perturbation  $\hat{V}^{\text{Subs}}$  (Table I) which alters the onsite energy of the site in question by a quantity  $\lambda$ . The onsite energy of the carbon sites neighboring the impurity and their overlap integrals with the impurity site are presumed to be unchanged in this simple model. However they can be easily incorporated, as can additional orbitals beyond our single orbital approximation for the impurities, if a more accurate parametrization is required. Testing this assumption by inducing an additional small change

TABLE I. Perturbation operators ( $\hat{V}$ ) and the corresponding fluctuation in the system GF at a general lattice site  $i$  ( $\Delta G_{ii}$ ). Our notation follows the rule that  $a$  corresponds to an adsorbate atom site and the numerical indices specify the location of impurities, e.g., 0 for a substitutional impurity and 1 or 2 for the carbon host sites of adsorbates.

	Substitutional	Vacancy	Top	Bridge
$\hat{V}$	$\lambda 0\rangle\langle 0 $	$\lim_{\lambda \rightarrow \infty} \lambda 0\rangle\langle 0 $	$ 1\rangle\tau\langle a  + \text{c.c.}$	$ 1\rangle\tau\langle a  +  2\rangle\tau\langle a  + \text{c.c.}$
$\Delta G_{ii}$	$\frac{g_{i0}^2 \lambda}{1 - g_{00} \lambda}$	$\sim \frac{g_{i0}^2}{-g_{00}}$	$\frac{g_{i1}^2  \tau ^2 g_{aa}}{1 - g_{aa} g_{11}  \tau ^2}$	$\frac{(g_{i1} + g_{i2})^2 g_{aa} \tau^2}{1 - (g_{11} + g_{12} + g_{21} + g_{22}) g_{aa} \tau^2}$

of the onsite energies of neighboring sites, or the hoppings between the impurity and these neighbors, reveals that the behavior is unchanged except for minor variations of  $\Delta n$  on sites very close to the central impurity. The presence of a substitutional impurity at site 0 induces a fluctuation of the diagonal matrix element GF, for example  $\Delta G_{ii}$  at site  $i$ , which can be found through applying  $\hat{V}^{\text{Subs.}}$  to Eq. (4), the result of which is shown in Table I.

Vacancy defects, formed by the removal of a carbon atom from the graphene lattice [Fig. 1(C)], can be considered as a phantom substitutional atom in the limit where the onsite energy  $\lambda \rightarrow \infty$ . In a physical context this is effectively excluding the state to the electrons in the lattice. Experimentally, vacancies can be induced by ion bombardment.<sup>20</sup> An approximation of the corresponding  $\Delta G_{ii}^{\text{Subs.}}$ , using the limit  $\lambda \rightarrow \infty$ , is shown in Table I. Alternatively this can be modeled by removing the hopping between the site and the nearest neighbors.

Adsorbates, which bind to atoms in the graphene lattice, are characterized by an atom with onsite energy  $\epsilon_a$  which is initially disconnected from the graphene sheet with an onsite GF  $g_{aa} = 1/(E - \epsilon_a)$ . A top-adsorbed adatom [Fig. 1(D)] is connected to the lattice by the perturbation  $\hat{V}^{\text{Top}}$  in Table I which connects the adatom and site 1 in the graphene lattice, where  $\tau$  is the overlap integral between the adatom and the host lattice site. Similarly, a bridge-adsorbed adatom [Fig. 1(E)] is attached to two carbon host sites in the lattice through an extra term in  $\hat{V}$ . The onsite GF fluctuations  $\Delta G_{ii}^{\text{Top}}$  and  $\Delta G_{ii}^{\text{Bridge}}$  are again shown in Table I.

### C. Charge density perturbations

The effect of a general perturbation  $\hat{V}$  on the charge density on site  $i$  ( $\Delta n_i$ ) is calculated through an integration of the change in LDOS,  $\Delta \rho_i$ ,

$$\Delta n_i = \int_{-\infty}^{\infty} dE f(E) \Delta \rho_i, \quad (5)$$

where  $f(E)$  is the Fermi function and  $\Delta \rho_i = -\frac{2}{\pi} \text{Im} \Delta G_{ii}$  relates the change in local density of states to the perturbed diagonal GF  $\Delta G_{ii}$ . Physically,  $n_i$  is the number of states below the Fermi energy ( $E_F$ ) that are filled by electrons on site  $i$ , where  $\rho_i$  describes the energy distribution of these states at the site. When calculating  $\Delta n$  numerically the integral is evaluated along the imaginary energy axis to avoid discontinuities along the real axis. This transformation is done through forming a contour in the upper half plane, which contains no poles, and evaluating the contour integral via Cauchy's theorem.

### D. Changes in total system energy

Green functions methods can also be used to quantify other phenomena associated with the lattice, for example the change in the total system energy due to the bonding of impurities follows from a sum rule and is given explicitly by the Lloyd formula<sup>21</sup>

$$\Delta E = \frac{2}{\pi} \text{Im} \int_{-\infty}^{\infty} dE f(E) \ln \det(\hat{I} - \hat{g} \hat{V}). \quad (6)$$

This quantity is directly related to  $\hat{V}$  and is useful for finding energetically favorable impurity positions and can be used to investigate the dispersion and clustering of impurities.<sup>22,23</sup> For multiple impurities the expression will contain interference terms which result in changes from the single impurity case and can reveal favored configurations in the lattice.

## III. FRIEDEL OSCILLATIONS IN CHARGE DENSITY AND LDOS

### A. Weak substitutional impurities

To begin, we consider the charge density variations  $\Delta n$  at all lattice sites surrounding a substitutional impurity of strength  $\lambda = |\tau|$ , situated on a site in the black sublattice. A numerical evaluation using Eq. (5) and  $\Delta G_{ii}^{\text{Subs.}}$  from Table I yields the contour plots in Figs. 2(a) and 2(b), where we see FOs in the charge density radiating away from the central impurity on both sublattices with a wavelength determined by  $E_F$ . There is clear sublattice asymmetry in  $\Delta n$  between the black (a) and white (b) sublattices with  $\Delta n$  swapping signs between the sites in the same unit cell. This signature is important when considering multiple impurities, which we will discuss in Secs. III B and IV. It is possible to approximate  $\Delta \rho$  and  $\Delta n$  along the armchair direction [dashed line in Fig. 2(a)] by applying the SPA approach and the Born approximation, which is valid for weak scatterers of strength  $\lambda \lesssim |\tau|$ , to  $\Delta G_{ii}^{\text{Subs.}}$ , resulting in

$$\Delta \rho_i \approx \frac{-2}{\pi} \text{Im} g_{i0}^2 \quad (7)$$

$$\Delta n_i^{\text{Subs.}} \approx -\lambda \frac{2}{\pi} \text{Im} \int_{-\infty}^{\infty} dE f(E) g_{i0}^2, \quad (8)$$

where  $g_{i0}^2$  can then be expressed using Eq. (2) as  $\frac{A^2 e^{2iQ(E)D}}{D}$  and we can solve the integral via contour integration in the upper half of the complex energy plane, the poles in the integrand being given by the Matsubara frequencies. Taking the limit of zero temperature gives the sum

$$\Delta n_i^{\text{Subs.}} \sim \lambda \frac{2}{\pi} \text{Im} \sum_{\ell=0}^{\infty} \frac{\gamma_{\ell}(E)}{D^{\ell+2}} e^{2iQ^{(0)}D}. \quad (9)$$



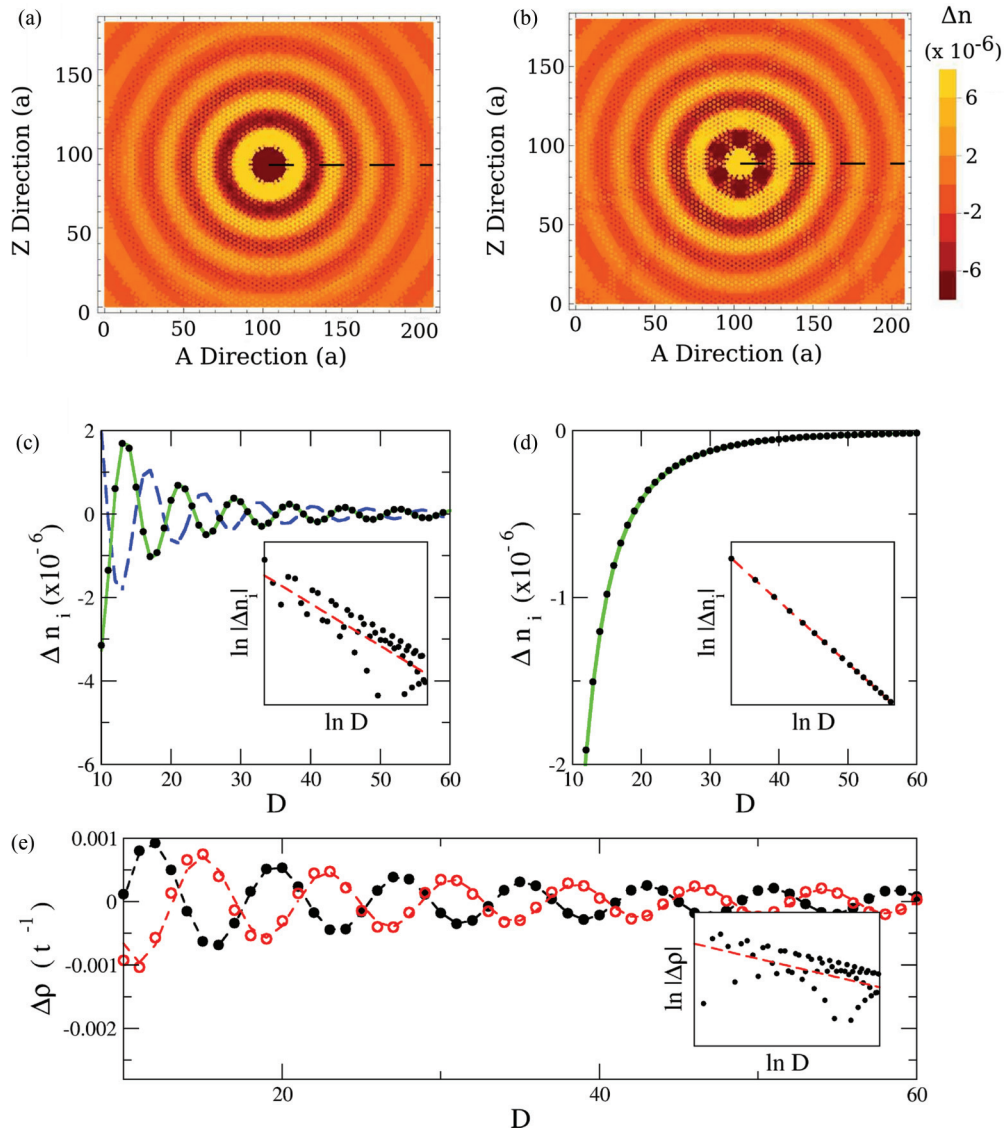


FIG. 2. (Color online) The FO introduced by a substitutional impurity of strength  $\lambda = 0.1|t|$ . Numerical contour plots of FOs in  $\Delta n$  on the black (a) and white (b) sublattices at  $E_F = 0.2|t|$  with the impurity located at the center, calculated using Eq. (5). Plot (c) shows a cross section of numerical (black circles) and SPA (green line) calculations of  $\Delta n$  on the black sublattice, and the numerical (blue dashed line) calculation for the white sublattice illustrating the sign change of  $\Delta n$ , along the dashed line shown in panel (a) for  $E_F = 0.2|t|$ . The inset shows a log-log plot of the black sublattice data with a regression line (red, dashed) corresponding to a decay of  $D^{-2}$ . (d) shows  $\Delta n$  at the same locations when  $E_F = 0$  where we see an absence of oscillations and a quicker decay, shown by the  $D^{-3}$  regression line in the inset. Panel (e) is a cross section of  $\Delta\rho_i$  for the same impurity and locations, with numerical results for the black (white) sublattice given by the black, solid (red, hollow) symbols. Analytic SPA results are given by the corresponding dashed lines, and the inset shows a log-log plot of the data with a red dashed line corresponding to a decay of  $D^{-1}$ .

The sum coefficients  $\gamma_\ell(E)$  are related to the SPA coefficients and defined as

$$\gamma_\ell(E) = \frac{(-1)^\ell \mathcal{B}^{(\ell)}}{(2Q^{(1)})^{\ell+1}}, \quad (10)$$

where  $\mathcal{B} = \mathcal{A}^2$  and  $X^{(\ell)}$  denotes the  $\ell^{\text{th}}$  derivative of the function  $X$  with respect to energy.  $\mathcal{B}^{(\ell)}$ ,  $Q^{(0)}$ , and  $Q^{(1)}$  are evaluated at the Fermi energy  $E_F$ . The first order term of  $\Delta n$  thus decays as  $D^{-2}$  with an oscillation period determined by  $Q^0$ , and thus  $k_F$  [Fig. 2(c)]. At the Dirac point we find that  $Q^0 \rightarrow \pi$  in the phase factor which causes the sign-changing oscillations to become commensurate with the lattice spacing

and seemingly disappear for all terms. Additionally, the energy dependent term  $B^0 \rightarrow 0$  and so the leading term of the series  $\gamma_0 = 0$ . Taking the next leading term of the series in Eq. (9) ( $\ell = 1$ ) gives  $\Delta n_i$  decaying as  $D^{-3}$ , and a comparison between the SPA approximation and the numerical result is shown in Fig. 2(d). We also note that  $\Delta\rho$  decays as  $D^{-1}$  as shown in Fig. 2(e) away from the Dirac point, which can be inferred directly from Eq. (7). The sublattice asymmetry is quite clear in both the cross section of  $\Delta n$  [panel (c)] and  $\Delta\rho$  [panel (d)] in Fig. 2. In both cases the sign of the fluctuation is opposite for neighboring sites on opposite sublattices. Oscillations in  $\Delta\rho$  can be seen directly through scanning

tunnel microscopy. The opposing sign of the oscillations is a signature of FOs in  $\Delta\rho$ ,  $\Delta n$ ,  $\Delta E$  and also of the RKKY interaction.<sup>12</sup> These results agree with previous work,<sup>2,4</sup> but due to our approximation method requiring large  $D$  we are limited to the long-range behavior in the ranges of 5+ unit cells and so miss short wavelength features which are present in the region immediately surrounding an impurity, which have been investigated in more depth by Bacsı and Virosztek.<sup>2,3</sup> In addition to what is shown in Fig. 2 we found excellent agreement between numerical and analytic calculations for all energy and sublattice configurations.

### B. Multiple weak substitutional impurities

When considering two or more substitutional impurities we can extend the matrix  $\hat{V}^{\text{Subs.}}$  (Table I) to include additional sites by addition of extra perturbations at the corresponding locations, for example for two identical impurities at arbitrary sites  $A$  and  $B$  we have  $\hat{V} = \lambda|A\rangle\langle A| + \lambda|B\rangle\langle B|$ . Figure 3(a) shows a contour plot of  $\Delta n$  on the black sublattice for two such impurities spaced by  $D = 80$  in the armchair direction, where the SPA can be used to approximate  $\Delta n$  along the dashed line. Generally, if  $\lambda \lesssim |t|$  then we find through Eq. (5) and the Born Approximation that to first order  $\Delta n$  has the form

$$\Delta n_i^{\text{Mult.}} \approx -\frac{2}{\pi} \text{Im} \int dE f(E) (\Delta_A + \Delta_B + \Delta_{AB}), \quad (11)$$

where

$$\Delta_A = g_{iA} \lambda g_{Ai},$$

and

$$\Delta_B = g_{iB} \lambda g_{Bi},$$

$$\Delta_{AB} = 2g_{iA}g_{AB}g_{Bi} - g_{iA}g_{BB}g_{Ai} - g_{iB}g_{AA}g_{Bi}.$$

$\Delta_A$  and  $\Delta_B$  arise from the effects of the individual isolated impurities and the extra term  $\Delta_{AB}$  describes the interference effect. The approach for the single impurity can be adapted and applied to all three terms, where the integration of  $\Delta_A$  and  $\Delta_B$  will be identical to the single impurity case and the interference term  $\Delta_{AB}$  can be approximated well if  $A$  and  $B$  are at least a few unit cells apart. Clearly  $\Delta_{AB}$  is dependent on  $\lambda^2$ , but also on the separation of  $A$  and  $B$ . Thus this term decays rapidly when the scatterers are weak and/or separated by several unit cells. Consider a cross section of the charge density fluctuations indicated by the black dashed line in Fig. 3(a). Applying the SPA derived in the previous section we can match the interference pattern seen, as shown in Fig. 3(b), achieving an excellent match between analytic and numerical methods. By breaking apart the SPA terms we find that the dominant contribution is from the isolated impurities [given by  $\Delta_A$  (black curve) and  $\Delta_B$  (red curve) in Fig. 3(c)] with a very small contribution from the interference term  $\Delta_{AB}$  regardless of chosen energy [Fig. 3(d)]. If  $A$  and  $B$  are arranged to be on opposite sublattices, as shown in Fig. 3(e), a clear change in  $\Delta n$  can be seen compared to the same sublattice case in Fig. 3(a). By switching  $B$  to the white sublattice we have induced an inversion in the  $\Delta_B$  contribution to  $\Delta n$  resulting in a more complex interference pattern.

Whilst the SPA works well when  $D$  is suitably large and  $\lambda$  small, the simple approximation breaks down when

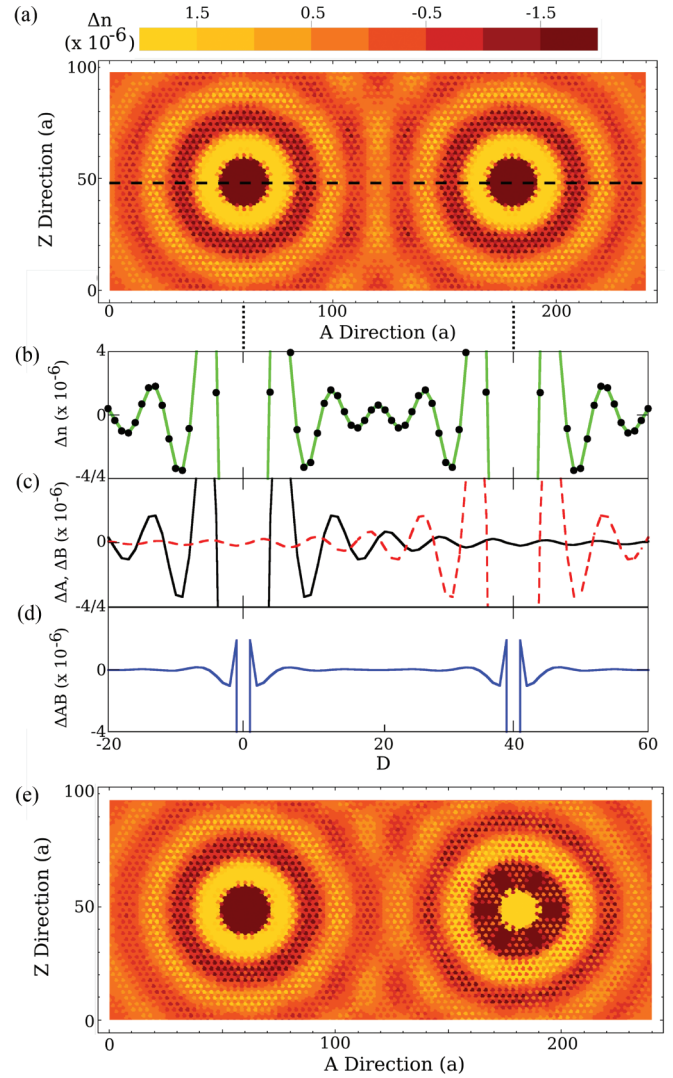


FIG. 3. (Color online) (a) Numerical simulation of  $\Delta n$  FOs on the black sublattice for two weak scatterers  $\lambda = 0.1|t|$  separated by 40 unit cells in the armchair direction at  $E_F = 0.2|t|$ . As the chosen Fermi energy lies in the linear dispersion regime, the interference pattern that arises is similar to that seen in classical waves. (b) Cross section of  $\Delta n$  along the dashed line in the top contour plot of analytic (green) and numerical (black symbols) calculations. (c) and (d) Contributions to  $\Delta n$  from the terms  $\Delta_A$  (black),  $\Delta_B$  (red, dashed), and  $\Delta_{AB}$  (blue) per Eq. (11). (e) As (a) but with the impurities in a black (left) and white (right) configuration.

the impurities are moved to within a couple of unit cells as the contribution of the interference terms becomes more important, especially for impurities on opposite sublattices. In addition to the interference term  $\Delta_{AB}$ , the region of significant overlap between the  $\Delta_A$  and  $\Delta_B$  increases and the FO patterns observed become more complex. In Fig. 4 we examine the numerical contour plot on the black sublattices of  $\Delta n$  for two such configurations, namely two substitutional atoms of the type considered in Fig. 2 which are either next-nearest neighbors residing on the same sublattice (left panel) or nearest neighbors on opposite sublattices (right panel). These configurations are shown schematically in the insets. For the first case, we note the strongly sublattice dependent behavior

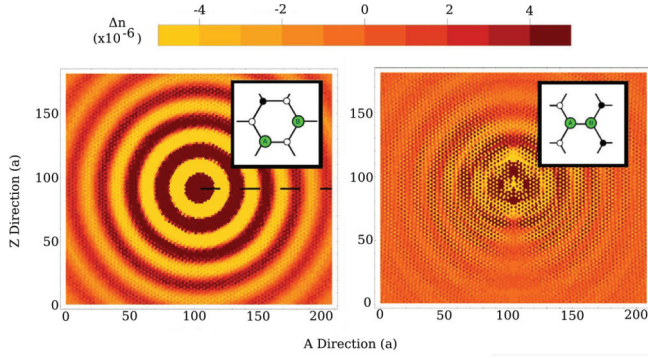


FIG. 4. (Color online) Black sublattice plots for quasi-nearest-neighbor impurities (left) and impurities sharing the same unit cell (right) as demonstrated in the insets for  $\lambda = |t|$  and  $E_F = 0.2|t|$ . The pairwise interaction and opposite sign of each impurity’s individual contribution leads to a complex  $\Delta n$  pattern in the second case.

noted in Sec. III A is still present, whereas in the nearest-neighbor impurity case it has been mostly washed out due to a superposition of the features observed in panels (a) and (b) of Fig. 2. The strikingly different interference patterns present clear signatures for the two cases, and this general qualitative difference in FOs may make impurity configurations easier to distinguish. The importance of this cross sublattice effect is apparent when considering FOs in other quantities, and will be discussed later in the context of energetically favorable doping configurations for multiple nitrogen substitutional impurities in graphene.

### C. Vacancies and strong scatterers

Taking the limit  $\lambda \rightarrow \infty$  for a substitutional impurity, as shown in Table I, corresponds to placing a vacancy in the

lattice and yields

$$\Delta n_i^{\text{vac.}} \approx \frac{-2}{\pi} \text{Im} \int_{-\infty}^{\infty} dE \frac{f(E)g_{i0}^2}{-g_{ii}}. \quad (12)$$

We note that the change in charge density on the impurity site, given by  $g_{i0} = g_{00}$  in Eq. (12), becomes  $\Delta n_0 = -1$  which corresponds to a complete depletion of electrons on this site. The pristine onsite  $g_{ii}$  can be approximated very well for energies in the linear regime as<sup>24</sup>

$$g_{ii} \approx \frac{2}{\sqrt{3}\pi t^2} E \ln \frac{|E|}{3t} - i \frac{|E|}{\sqrt{3}t^2}, \quad (13)$$

and this approximation works at energies up to approximately  $E_F \sim |t|/2$ . Equation (12) can be solved in a similar fashion to that of the single substitutional impurity by observing that  $g_{ii}$  is a function of energy only and absorbing it into the usual  $\gamma_\ell$  term in Eqs. (9) and (10), then following through with the usual derivation. There is no pole in the upper half plane for this integrand, so the evaluation method remains unchanged from the weak impurity case.

Vacancies can be calculated numerically by either inducing a very large  $\lambda$  value on a site, or by disconnecting the site from its neighbors. A comparison of this numerical calculation and the SPA approximation of  $\Delta n_i^{\text{vacancy}}$  (Table I) on sites within the same sublattice as the impurity is shown for a finite  $E_F$  in Fig. 5(a), and excellent agreement is seen between the two. The general features are similar to those noted for weaker impurities, namely sign-changing oscillations and a  $D^{-2}$  decay.

Interestingly, when we set  $E_F = 0$  we find a complete absence of FOs with  $\Delta n = 0$  at all sites, corresponding to no change in  $n$  from the pristine state. This behavior is noted whether we examine sites on the same or on the opposite sublattice to the impurity, and is in stark contrast to the case

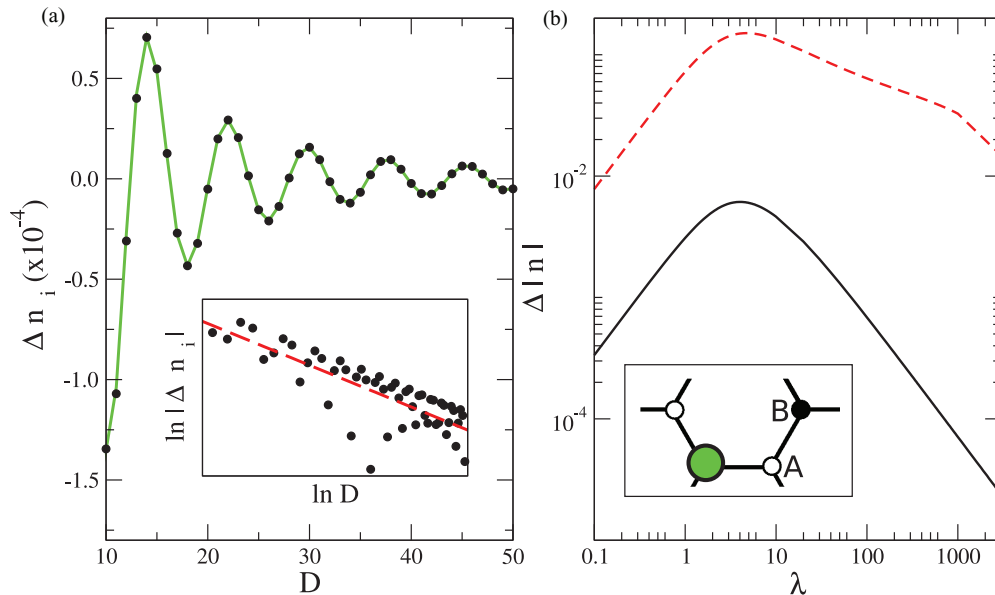


FIG. 5. (Color online) (a) Cross section of FOs in  $\Delta n$  at  $E_F = 0.2|t|$  on the black sublattice in the armchair direction due to a vacancy at site 0 for both numerical (black) and analytic (green) calculations with a logarithmic plot inset showing  $D^{-2}$  decay indicated by the red dashed line. (b) Log-log plot of  $|\Delta n_1|$  vs  $\lambda$  at  $E_F = 0$  on A (black line) and B (red line) sites shown in the inset schematic. For  $\lambda \gg 1$  and  $\lambda \ll 1$ , the amplitude of  $\Delta n_1$  becomes very small with a maximum amplitude at  $\lambda \approx 5t$ , with a positive sign on B and a negative sign on A.



of weaker scatterers where a nonoscillatory  $D^{-3}$  behavior was noted. To try to understand this unusual behavior, we examine the imaginary-axis integral that we need to solve to find  $\Delta n$ , which is of the form

$$\Delta n_i^{\text{Vac.}} \sim \text{Re} \int_{\eta}^{\infty} dx \frac{g_{i0}^2(E_F + ix)}{g_{00}(E_F + ix)}. \quad (14)$$

We will see that it is the behavior of the individual GFs along the imaginary axis which determines the presence or absence of the carrier density oscillations. At  $E_F = 0$  both  $g_{00}$  and  $g_{i0}$ , if  $i$  is on the black sublattice, become entirely imaginary along the integration range. Similarly if  $i$  is on the white sublattice,  $g_{i0}$  is entirely real, ensuring that on both sublattices the integrand becomes entirely imaginary over the integration range and  $\Delta n$  vanishes since it depends on the real part of the integrand only.

In the limit of large values of  $\lambda$  the perturbations described by Eq. (14) will vanish. In Fig. 5(b), we examine the charge density fluctuations on the site nearest the impurity on both the same (black curve, A) and opposite (red, dashed curve, B) sublattice as  $\lambda$  is increased at  $E_F = 0$ . These sites will have the largest change in carrier density due to their proximity to the impurity. We note that  $\lambda \approx 4t$  ( $\lambda \approx 10t$ ) causes the largest amplitude in  $\Delta n$  on the black (white) sublattice, with the amplitude of  $\Delta n$  decreasing as  $\lambda$  increases further. It should be emphasized that this disappearance of  $\Delta n$  in the  $\lambda \rightarrow \infty$  limit occurs only at  $E_F = 0$ , whereas other energies will show the familiar  $D^{-2}$  oscillatory pattern.

It is straightforward to evaluate  $\Delta\rho_i$  from the  $\Delta G_{ii}^{\text{Vacancy}}$  approximation in Table I, where there is a clear asymmetry between the black and white sublattices at the Dirac point, as  $g_{i0}^{\bullet} \rightarrow 0$  (with  $\bullet$  being the minority sublattice—a vacancy removes a carbon atom from the sublattice) and  $g_{i0}^{\circ} \rightarrow +i\infty$  ( $\circ$  is the majority sublattice as it has more carbon atoms). This results in a zero density of states at  $E_F = 0$ , similar to undoped graphene, on the minority sublattice and leads to divergencies in  $\Delta\rho$  on the majority sublattice, which correspond to the widely predicted midgap resonance states seen in many previous works.<sup>25–27</sup> The bound state above the main band is also removed to infinity and can be disregarded.

The LDOS peak at the Dirac point on majority sublattice sites, and the absence of one on minority sublattice sites, is connected to the phenomenon of vanishing  $\Delta n$  in the vacancy case studied earlier. The introduction of a vacancy deforms the LDOS at each site, but the number of states on all other lattice sites is conserved such that  $\frac{-2}{\pi} \text{Im} \int_{-\infty}^{\infty} dE\rho = 2$ . Electron-hole symmetry is preserved for a resonance at exactly  $E = 0$  and thus the LDOS remains symmetric around about the Dirac point for sites on either sublattice. The carrier density, being simply the integral of the LDOS up to  $E_F = 0$ , is thus unaffected by the vacancy and hence  $\Delta n = 0$  for all other lattice sites.

#### D. Adsorbates

An analytic expression for  $\Delta n_i^{\text{Top}}$ , the FO induced by a top-adsorbed impurity [as shown in Fig. 1(d)], can be found using similar methods to that of a single substitutional atom, since  $\Delta G_{ii}^{\text{Top}}$  in Table I is analytic in the upper half plane and there are no additional poles other than those at the Matsubara

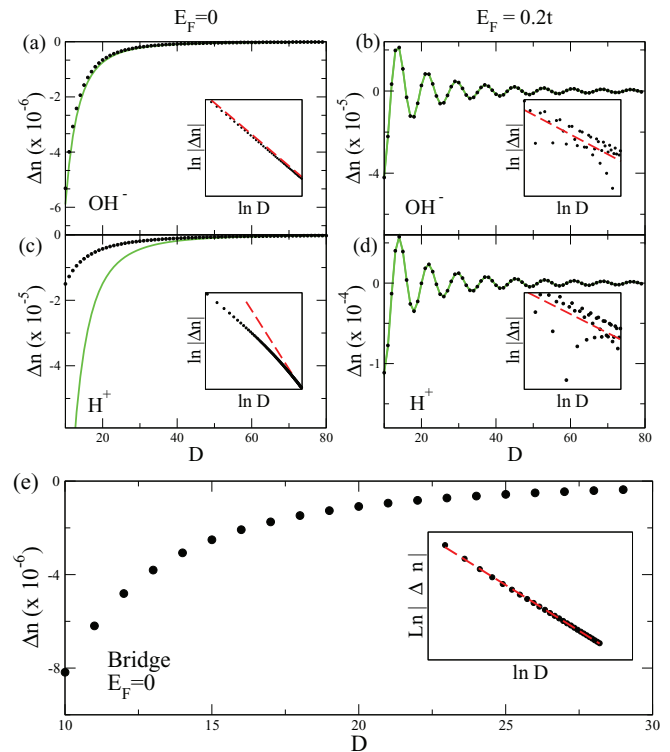


FIG. 6. (Color online) FOs in  $\Delta n$  due to top adsorbed  $OH^-$  (top row) and  $H^+$  (middle row) and to bridge-adsorbed carbon (bottom panel). The top two cases show both  $E_F = 0$  (left panels) and  $E_F = 0.2|t|$  (right panels). Numerical data (black) is compared with the analytic expression (green), with corresponding log-log plots as insets. The red lines in the insets correspond to  $D^{-2}$  fits for both  $E_F = 0.2|t|$  plots [panels (b) and (d)] and  $D^{-3}$  for the other cases. In panel (c), we note that due to the parametrization of the  $H^+$ , the SPA is a poor match to the numerics at  $E_F = 0$  away from the asymptotic limit. The charge density perturbations for a bridge-adsorbed carbon adatom, shown here as a numerical calculation (black) in the bottom panel, do not vanish at the Dirac point, unlike a top adsorbed carbon, due to cross sublattice interferences.

frequencies. However, an approximation of  $g_{11}$  as in Eq. (13) is required as this GF is beyond the scope of the SPA. This approximation restricts our results to the linear regime.

We consider two realistic cases of hydroxyl ( $OH^-$ ) and hydrogen ( $H^+$ ) adsorbates, using the parameters  $\epsilon_{OH^-} = -2.9|t|$ ,  $\tau_{OH^-} = 2.3|t|$  for hydroxyl<sup>28</sup> and  $\epsilon_{H^+} = -t/16$ ,  $\tau_{H^+} = 2t$  for hydrogen.<sup>29</sup> The results for these impurities for  $E_F = 0$  and  $E_F = 0.2|t|$  cases are presented in Fig. 6. We note an excellent match between the numerical (black circles) and analytic (green lines) approaches for all cases with the exception of hydrogen at  $E_F = 0$ . The parametrization of hydrogen leads to divergencies at  $E_F = 0$  which requires us to look much further away to see agreement (approx. 100 unit cells). The proximity of the hydrogen onsite term to the Dirac point produces a resonance condition at  $E_F = 0$ , and we see a clear change in the decay rate in the region close to the adsorbate in Fig. 6(c), with an eventual  $D^{-3}$  rate far from the defect. This has been studied recently by Mkhitarian and Mishchenko.<sup>30</sup> In the case of  $E_F \neq 0$  a decay rate of  $D^{-2}$  is found for both adsorbates, with  $D^{-3}$  at the Dirac point, with proviso, matching the behavior of a substitutional impurity



which could be expected due to the possibility of modeling the effect of the adatom through a self-energy term replicating a substitutional atom.<sup>18</sup>

We note that altering the onsite energy to  $\epsilon_a = E_F = 0$  forces a resonance condition and confirms previous findings where the adatom behavior can be similar to that of a vacancy<sup>29</sup> and the  $\Delta n$  FOs disappear completely, which we may expect, for example, in the case of a top adsorbed carbon. However, carbon prefers a bridge adsorbed configuration<sup>31</sup> and due to this bonding type the interference effects from the two host sites, which are on opposite sublattices, lead to finite charge density perturbations at the Dirac point. The presence of FOs in  $\Delta n$  for a bridge adsorbed carbon at  $E_F = 0$  can be seen by considering an arbitrary site  $i$  and the corresponding  $\Delta G_{ii}^{\text{Bridge}}$  (Table I). In Sec. III C we noted that, when considering imaginary axis integration of off-diagonal GFs at  $E_F = 0$ , that  $g_{ab}$  is either entirely real (for opposite sublattice propagators) or entirely imaginary (for same sublattice propagators). However from the form of  $\Delta G_{ii}^{\text{Bridge}}$  it is clear that there will exist both real and imaginary terms in the integrand for  $\Delta n_i$ , which was not the case for top-adsorbed or vacancy impurities. This cross sublattice interference is key to the nonvanishing  $\Delta n$  FOs for all bridge adsorbed atoms, regardless of parametrization, and in Fig. 6(e) we show a numerical plot of the familiar  $D^{-3}$  decay in  $\Delta n$  at the Dirac point. The usual  $D^{-2}$  oscillations are recovered with doping.

#### IV. SUBLATTICE ASYMMETRY IN NITROGEN DOPED GRAPHENE

Recent experimental works involving substitutional nitrogen dopants in graphene have reported a distinct sublattice asymmetry in their distribution, where the impurities are discovered to preferentially occupy one of the two sublattices, instead of being randomly distributed between them. This effect is noted at both long and short ranges<sup>13</sup> and is corroborated with DFT results.<sup>14</sup> A distinct and controllable sublattice asymmetry in doped graphene presents many interesting possibilities, among them the possibility of inducing a band gap by controlling the dopant concentration, an important step in the development of graphene-based field-effect transistors.<sup>15</sup> As remarked in the introduction, Green functions methods can be extended beyond FOs in  $\Delta n$  and  $\Delta \rho$  to include other quantities such as the change in total system energy ( $\Delta E$ ), due to a perturbation  $\hat{V}$ , using Eq. (6). The calculation of  $\Delta E$  allows the investigation of favorable impurity configurations, and we will now apply this method to study substitutional nitrogen impurities in graphene within a simple tight-binding model where the nitrogen impurities are characterized<sup>19</sup> by  $\lambda_N = -10$  eV.

##### A. Total energy change

We will first consider the interaction between two identical substitutional impurities at sites A and B with onsite energies  $\lambda$ , as in the multiple scattering case discussed previously, so that the determinant in Eq. (6) becomes  $\det(\hat{I} - \hat{g}\hat{V}) = (1 - g_{AA}\lambda)(1 - g_{BB}\lambda) - g_{AB}^2\lambda^2$ . It is possible then to identify two separate contributions to  $\Delta E$ . The first one is associated with

the individual impurities and is independent of the separation of A and B. Using  $g_{AA} = g_{BB}$ , we find

$$\Delta E_1^S = \frac{2}{\pi} \text{Im} \int dE f(E) \ln(1 - g_{AA}\lambda), \quad (15)$$

where the superscript  $S$  refers to the substitutional impurities. The second contribution is an interaction term dependent on their separation through the off-diagonal GF  $g_{AB}$ ,

$$\Delta E_{AB}^S = \frac{2}{\pi} \text{Im} \int dE f(E) \ln \left( 1 - \frac{g_{AB}^2\lambda^2}{(1 - g_{AA}\lambda)^2} \right), \quad (16)$$

such that  $\Delta E = 2\Delta E_1^S + \Delta E_{AB}^S$ . It is easy to see that  $\Delta E_1^S$  is both separation and configuration independent and takes a constant value.

To investigate the favorability of different configurations we define the dimensionless configuration energy function (CEF) for substitutional impurities

$$\beta^S(E_F) = \frac{\Delta E_{AB}}{|2\Delta E_1|}. \quad (17)$$

This quantity describes the change in energy of the system due to the interference between the two impurities, relative to the total energy change in the system for two noninteracting (infinitely separated) impurities. Positive values of the CEF correspond to less favorable configurations whereas negative values correspond to favorable configurations which decrease the total energy of the system. By calculating the CEF for different impurity configurations we can establish which are energetically favorable and thus more likely to be realized in experiment. A map of  $\beta^S(E_F = 0)$  values for a large number of different configurations is shown in Fig. 7(a). One impurity is fixed at the red circle corresponding to a site on the black sublattice.  $\beta^S$  is then calculated with the second impurity located at each of the sites on the map, with the shading of the triangle surrounding each site corresponding to the  $\beta^S$  value for that configuration. We note that, with the exception of nearest-neighbor site impurities, a general trend is seen where the second impurity prefers to locate on the same sublattice as the initial impurity. This trend gives rise to the checkerboardlike pattern seen in Fig. 7(a) where the same sublattice (black) sites are surrounded by darker triangles, corresponding to lower energy configurations, than the opposite sublattice (white) sites. It is also clearly visible in Fig. 7(b) where we plot  $\beta^S(E_F = 0)$  for the two sublattices separately for armchair direction separations. We also note here that the magnitude of  $\beta^S$  decays as  $D^{-3}$ . This is the same rate noted for FOs in  $\Delta n$  for substitutional impurities and is easily explained by examining  $g_{AB}$  and hence distance dependence of Eq. (16) to first order in  $\lambda$ , which results in a similar equation to Eq. (8) for FOs in  $\Delta n$ . Indeed, the same plot for  $E_F \neq 0$  in Fig. 7(c) reveals an oscillatory behavior and  $D^{-2}$  decay rate, again matching the  $\Delta n$  behavior. Thus the FOs both in  $\Delta n$  for a single substitutional impurity and in  $\beta^S$  for a pair of impurities display the same distance dependent behavior due to the similar dependence on off-diagonal Green functions that appears in both quantities. An important point to note is the discrepancy for the nearest neighbor impurity cases which Fig. 7(a) shows to be most favorable. In this case the

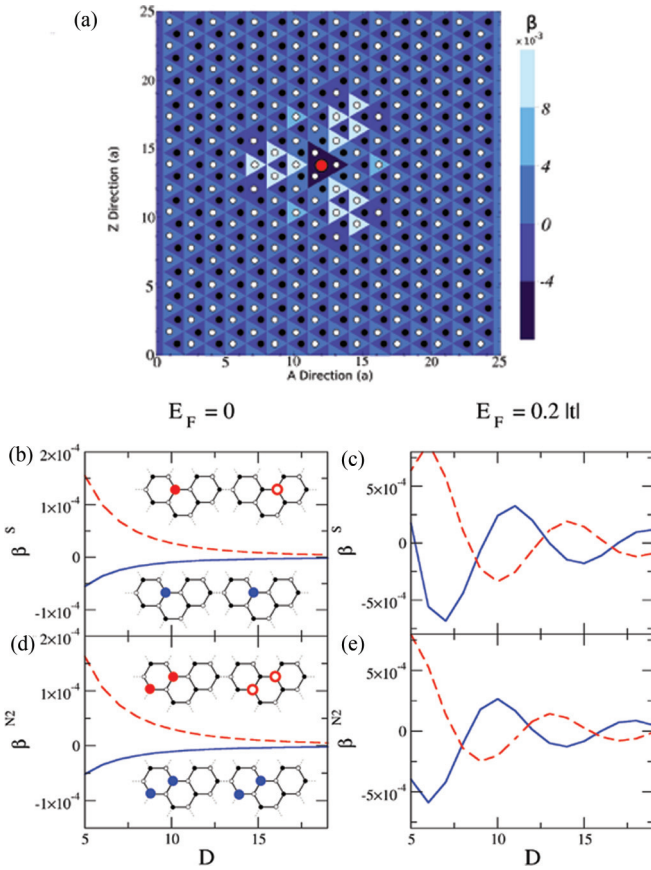


FIG. 7. (Color online) (a) A substitutional nitrogen is moved around a central fixed nitrogen (red) and  $\beta^S$  is plotted for each configuration at  $E_F = 0$ . (b) Cross-section of plot (a) along the A-direction with the fixed impurity at  $D = 0$ , the black (white) sublattice sites are indicated by the blue (red dashed) line showing the  $D^{-3}$  decay profile and the inset schematics show the configuration in both cases. (c) is a similar plot to (b) but with a Fermi Energy of  $E_F = 0.2|t|$ , where we see the presence of Friedel Oscillations and a decay of  $D^{-2}$ . For two pairs of impurities we plot  $\beta^{N_2}$  as a function of  $D$  in plot (d) for  $E_F = 0$  and plot (e) for  $E_F = 0.2|t|$  showing the same features as for the case of two isolated impurities.

asymptotic behavior extracted from our analytic expressions is evidently not yet valid. However we should also expect that our parametrization approach is not adequate to describe such impurities, as it treats the nitrogen impurities separately and neglects, for example, the additional overlap matrix elements required for two neighboring nitrogen impurities.

Furthermore, we note that by utilizing an alternative parametrization for the nitrogen impurity,<sup>19</sup>  $\lambda = -4$  eV, the inconsistent local behavior is removed and same sublattice configurations are more favorable everywhere. This confirms the sensitivity of results for local sites to the impurity parametrization. Another point to note is that the introduction of nitrogen impurities into graphene increases the total number of electrons in the system and leads to a shift in the Fermi energy. Thus for higher concentrations of nitrogen, the range for which same-sublattice doping is preferred is reduced due to the presence of the  $\beta_S$  oscillations in Fig. 7(c). However, the strength of the preference within this range may be

increased by the slower rate of decay predicted for doped graphene.

### B. Impurity segregation

Recent experimental observations, corroborated by DFT calculations, seem to suggest that two nitrogen impurities in close proximity to each other prefer to occupy sites on the same sublattice in a quasineighboring configuration<sup>13,14</sup> as shown in Fig. 4 (left, inset), hereon referred to as  $N_2^{\bullet\bullet}$  configuration. This configuration is preferred over the nearest-neighbor configuration  $N_2^{\circ}$  seen in Fig. 4 (right, inset) which was calculated as being the most favorable configuration in the simple model above. Despite the limitations of the simple model for small separations, we note that the experimentally observed configuration fits the general trend of small separation, same sublattice configurations being the most favorable that the asymptotic behavior of our model suggests.

The real advantage to our FO-based approach to studying such systems becomes clear when we consider multiple  $N_2^{\bullet\bullet}$  type impurities. Experimental evidence suggests that not only do pairs of nitrogen impurities prefer the  $N_2^{\bullet\bullet}$  to the  $N_2^{\circ}$  configuration, but that a pair of  $N_2^{\bullet\bullet}$ -like impurities prefer to locate on the same sublattice. In other words, that two  $N_2^{\bullet\bullet}$  or two  $N_2^{\circ}$  impurities are formed in preference to one of each. This behavior leads to domains in nitrogen-doped graphene with a large sublattice asymmetric doping. Such behavior has been predicted to lead to interesting and useful transport properties.<sup>15</sup> Numerical investigation of such systems using DFT calculations is limited to small separations which makes it difficult to explore the behavior which emerges in more highly-doped larger scale systems. By extending the model discussed for single substitutional N dopants in the previous section, we can use the Lloyd model to investigate these types of systems. In this setup, the individual impurities are now  $N_2^{\bullet\bullet}$  or  $N_2^{\circ}$  defects, shown as insets in Fig. 7(d). We consider a  $N_2^{\bullet\bullet}$ -type impurity at location A and introduce a second  $N_2^{\bullet\bullet}$  or  $N_2^{\circ}$  impurity a distance  $D$  away at site B. We calculate the CEF for such a configuration analogously to Eq. (17),

$$\beta^{N_2}(E_F, D) = \frac{\Delta E_{AB}^{N_2}}{|2\Delta E_1^{N_2}|}, \quad (18)$$

where now  $\Delta E_1^{N_2}$  is the total change in energy in introducing a single  $N_2^{\bullet\bullet}$  or  $N_2^{\circ}$  impurity. This quantity is plotted for the case when the second impurity is also a  $N_2^{\bullet\bullet}$  (blue curve) and when it is a  $N_2^{\circ}$  (red dashed curve) in Fig. 7(d). We note that, similar to the substitutional impurity case, same sublattice impurity configurations are preferential.

To benchmark our calculations, it is worth comparing our  $\Delta E_{AB}^{N_2}$  results to the DFT calculation performed in Lv *et al.*<sup>32</sup> for a single value of separation. In this work, calculations were performed for both two  $N_2^{\bullet\bullet}$ -type impurities and for a configuration with one  $N_2^{\bullet\bullet}$  and one  $N_2^{\circ}$ . In both cases the impurity pairs had a separation of approximately  $D = 7$ . An energy difference of 14 meV is reported using the DFT calculation<sup>32</sup> compared to 2.3 meV for the tight-binding model. In both cases the double  $N_2^{\bullet\bullet}$  configuration was energetically favorable. The numerical discrepancy between the results is to be expected due to the overly simple parametrization of the  $N_2^{\bullet\bullet}$  impurity employed in the tight-binding model. However, the qualitative

results for this model are not strongly affected by the local impurity parametrization, indicating also that the long-range sublattice ordered doping behavior may not be unique to nitrogen. We emphasize that the same-sublattice configuration preference is noted for all separations in our model, explaining the long-ranged ordering seen in experiment.<sup>13,14</sup>

In a similar manner to that discussed for substitutional impurities, a finite concentration of  $N_2^{\bullet\bullet}$  impurities shifts the Fermi energy away from the Dirac point and introduces oscillations in  $\beta^{N^2}(D)$ . These oscillations, seen in Fig. 7(e), produce regions away from the initial  $N_2^{\bullet\bullet}$  impurity where a  $N_2^{\circ\circ}$  is more favorable than a second  $N_2^{\bullet\bullet}$  impurity. However, small increases in  $E_F$  would preserve the same sublattice preference in local regions. This suggests that larger scaled N-doped systems may have alternating domains where each of the sublattices is dominant, and this prediction is consistent with experimental observations.<sup>14</sup> An extension of the model discussed here to include a more accurate parametrization of the individual  $N_2^{\bullet\bullet}$  impurities would provide a transparent and computationally efficient method to explore the formation and size of such domains, and to determine their dependence on the concentration of N dopants and the resultant Fermi energy shift.

## V. CONCLUSIONS

In this work we have derived analytic approximations for change in carrier density ( $\Delta n$ ) and local density of states ( $\Delta\rho$ ) in the high symmetry directions in graphene by employing a stationary phase approximation of the lattice Green functions. We obtain excellent agreement with numerical calculations for single and double substitutional atoms, vacancies, top adsorbed, and bridge adsorbed impurities in the long-range limit, finding  $\Delta n$  decays with distance ( $D$ ) as  $D^{-2}$  for all impurities for  $E_F \neq 0$ . At the Dirac point, due to the disappearing density of states, we find the Friedel oscillations in  $\Delta n$  away from substitutional, top and bridge adsorbed

impurities decay with as  $D^{-3}$ , but that in the case of vacancies and a resonant top adsorbed carbon  $\Delta n$  is unchanged from the pristine case on all lattice sites due to the symmetry of electron and hole states in the LDOS profile around the Dirac point. In the case of top adsorbed carbon, which is less energetically favored than the more naturally occurring bridge adsorbed carbon, the cross sublattice interference present in the bonding arrangement ensures  $\Delta n$  does not vanish.

Furthermore by expressing the total change in system energy due to the introduction of impurities through the lattice Green functions we investigated how a sublattice asymmetry of both single and pairs of nitrogen dopants in graphene arises. We demonstrate that the dopant configuration energy is minimized where they share the same sublattice, a result which agrees with recent experiments<sup>13-15</sup> where such a distinct sublattice preference was found.

As well as appearing in the carrier density, formation energy and LDOS, as shown in this work, similar oscillations can appear in the spin polarization of atomic sites due to the presence of a magnetic impurity<sup>12,33</sup> and is analogous to some features seen in the RKKY. Our method can be further extended by applying it to strained graphene, as has been done with the SPA approach to the RKKY,<sup>34</sup> and the behavior of FOs in such a system has been studied theoretically only very recently<sup>5</sup> where a change in decay behavior and sublattice asymmetry of the FOs due to the merging of the two inequivalent Dirac points in the Brillouin zone caused by inducing strain was found.

## ACKNOWLEDGMENTS

Authors J.L. and M.F. acknowledge financial support from the Programme for Research in Third Level Institutions (PRTLII). The Center for Nanostructured Graphene (CNG) is sponsored by the Danish National Research Foundation, Project No. DNRF58.

\*spow@nanotech.dtu.dk

<sup>1</sup>J. Friedel, *Adv. Phys.* **3**, 446 (1954).

<sup>2</sup>A. Bacsı and A. Viroztek, *Phys. Rev. B* **82**, 193405 (2010).

<sup>3</sup>A. Viroztek and A. Bacsı, *J Supercond. Nov. Magn.* **25**, 691 (2012).

<sup>4</sup>V. V. Cheianov and V. I. Fal'ko, *Phys. Rev. Lett.* **97**, 226801 (2006).

<sup>5</sup>C. Dutreix, L. Bilteanu, A. Jagannathan, and C. Bena, *Phys. Rev. B* **87**, 245413 (2013).

<sup>6</sup>Y. Tao and G. Bergmann, *Eur. Phys. J. B* **85**, 1 (2012).

<sup>7</sup>D. V. Khveshchenko, *Phys. Rev. B* **75**, 241406 (2007).

<sup>8</sup>G. Gomez-Santos and T. Stauber, *Phys. Rev. Lett.* **106**, 045504 (2011).

<sup>9</sup>V. V. Cheianov, *Eur. Phys. J.: Spec. Top.* **148**, 55 (2007).

<sup>10</sup>K. S. Novoselov, A. K. Geim, S. V. Morozov, D. Jiang, Y. Zhang, S. V. Dubonos, I. V. Grigorieva, and A. A. Firsov, *Science* **306**, 666 (2004).

<sup>11</sup>S. R. Power and M. S. Ferreira, *Phys. Rev. B* **83**, 155432 (2011).

<sup>12</sup>S. R. Power and M. S. Ferreira, *Crystals* **3**, 49 (2013).

<sup>13</sup>L. Zhao, R. He, K. T. Rim, T. Schiros, K. S. Kim, H. Zhou, C. Gutierrez, S. P. Chockalingam, C. J. Arguello, L. Plov,

D. Nordlund, M. S. Hybertsen, D. R. Reichman, T. F. Heinz, P. Kim, A. Pinczuk, G. W. Flynn, and A. N. Pasupathy, *Science* **333**, 999 (2011).

<sup>14</sup>R. Lv, Q. Li, A. R. Botello-Méndez, T. Hayashi, B. Wang, A. Berkdemir, Q. Hao, A. L. Elías, R. Cruz-Silva, H. R. Gutiérrez, Y. A. Kim, H. Muramatsu, J. Zhu, M. Endo, H. Terrones, J.-C. Charlier, M. Pan, and M. Terrones, *Sci. Rep.* **2**, 586 (2012).

<sup>15</sup>A. Lherbier, A. R. Botello-Mendez, and J.-C. Charlier, *Nano Lett.* **13**, 1446 (2013).

<sup>16</sup>H. Park, A. Wadehra, J. W. Wilkins, and A. H. Castro Neto, *Phys. Rev. B* **87**, 085441 (2013).

<sup>17</sup>M. Craciun, S. Russo, M. Yamamoto, and S. Tarucha, *Nano Today* **6**, 42 (2011).

<sup>18</sup>E. Economou, *Green's Functions in Quantum Physics*, 3rd ed. (Springer, Berlin, 2006).

<sup>19</sup>P. Lambin, H. Amara, F. Ducastelle, and L. Henrard, *Phys. Rev. B* **86**, 045448 (2012).

<sup>20</sup>F. Banhart, J. Kotakoski, and A. V. Krasheninnikov, *ACS Nano* **5**, 26 (2011).

<sup>21</sup>P. Lloyd, *Proc. Phys. Soc.* **90**, 207 (1967).

- <sup>22</sup>S. R. Power, V. M. de Menezes, S. B. Fagan, and M. S. Ferreira, *Phys. Rev. B* **80**, 235424 (2009).
- <sup>23</sup>J. d'Albuquerque e Castro, A. C. de Castro Barbosa, and M. V. Tovar Costa, *Phys. Rev. B* **70**, 165415 (2004).
- <sup>24</sup>M. Katsnelson, *Graphene: Carbon in Two Dimensions*, 1st ed. (Cambridge University Press, Cambridge, 2011).
- <sup>25</sup>T. O. Wehling, A. V. Balatsky, M. I. Katsnelson, A. I. Lichtenstein, K. Scharnberg, and R. Wiesendanger, *Phys. Rev. B* **75**, 125425 (2007).
- <sup>26</sup>B. R. K. Nanda, M. Sherafati, Z. S. Popovi, and S. Satpathy, *New J. Phys.* **14**, 083004 (2012).
- <sup>27</sup>M. Sherafati and S. Satpathy, *Phys. Status Solidi B* **248**, 2056 (2011).
- <sup>28</sup>J. P. Robinson, H. Schomerus, L. Oroszlány, and V. I. Fal'ko, *Phys. Rev. Lett.* **101**, 196803 (2008).
- <sup>29</sup>T. O. Wehling, S. Yuan, A. I. Lichtenstein, A. K. Geim, and M. I. Katsnelson, *Phys. Rev. Lett.* **105**, 056802 (2010).
- <sup>30</sup>V. V. Mkhitarian and E. G. Mishchenko, *Phys. Rev. B* **86**, 115442 (2012).
- <sup>31</sup>C. Ataca, E. Aktürk, H. Şahin, and S. Ciraci, *J. Appl. Phys.* **109**, 013704 (2011).
- <sup>32</sup>See Lv *et al.* (Ref. 14), Supplementary Material, Sec. 6.
- <sup>33</sup>B. Wunsch, T. Stauber, F. Sols, and F. Guinea, *New J. Phys.* **8**, 318 (2006).
- <sup>34</sup>S. R. Power, P. D. Gorman, J. M. Duffy, and M. S. Ferreira, *Phys. Rev. B* **86**, 195423 (2012).