

Toppan Best-set Premedia Limited	
Journal Code: ZOJ	Proofreader: Mony
Article No: ZOJ12081	Delivery date: 20 Sep 2013
Page Extent: 12	

AUTHOR QUERY FORM

Dear Author,

During the preparation of your manuscript for publication, the questions listed below have arisen. Please attend to these matters and return this form with your proof.

Many thanks for your assistance.

Query References	Query	Remarks
1	AUTHOR: Krystufek <i>et al.</i> 2012 has been changed to Kryštufek <i>et al.</i> , 2012 so that this citation matches the Reference List. Please confirm that this is correct.	
2	AUTHOR: Korobchenko & Zagorodnyuk 2009 has been changed to Korobchenko & Zagorodnyuk, 2009 so that this citation matches the Reference List. Please confirm that this is correct.	
3	AUTHOR: Fig 1 – please confirm you mean Figure 1 in this article and not fig. 1 of IUCN, 2012?	
4	AUTHOR: Resetnik, 1938 has been changed to Reshetnik, 1938 so that this citation matches the Reference List. Please confirm that this is correct.	
5	AUTHOR: Fig. 2 – correct figure?	
6	AUTHOR: Pavlinov & Rossolimo, 1998 has not been included in the Reference List, please supply full publication details.	
7	AUTHOR: Gromov & Erbaeva 1995 has been changed to Gromov & Erbaeva, 1995 so that this citation matches the Reference List. Please confirm that this is correct.	
8	AUTHOR: The PCR product with AmpliTaq generated 3' overhangs and was ligated into pGEM Easy vector (Promega) and transformed into JM109-competent cells (supplied with pGEM Easy Vector Systems II). Edited text ok?	
9	AUTHOR: 5x – 5x?	
10	AUTHOR: The presence of five phylogenetic groups was supported by all of the analytical methods tested: maximum-likelihood (Fig. 3), maximum-parsimony, and neighbour-joining analyses (not shown here). Edited text ok?	
11	AUTHOR: The phylogenetic reconstruction based on the alignment of 4507 bp and representing six mitochondrial genes resulted in congruent topologies with maximum-likelihood, maximum-parsimony, and neighbour-joining methods. Edited text ok?	
12	AUTHOR: (Murariu & Torcea, 1984: 249, fig. 1A) Please confirm correct citation, and fig in the article cited, not Fig. 1 of this article.	
13	AUTHOR: (Murariu & Torcea, 1984: 249, fig. 1B) – ok?	
14	AUTHOR: The colonization of the Balkan Peninsula by <i>Nannospalax</i> from Asia Minor took place at a later date (Hadid <i>et al.</i> , 2012), and was possibly responsible for the push of <i>Spalax</i> from the lowlands to less hospitable regions in the peninsula, where they today survive in small and scatered populations. Edited text ok?	
15	AUTHOR: Korobchenko & Zagorodnyuk 2009 has been changed to Korobchenko & Zagorodnyuk, 2009 so that this citation matches the Reference List. Please confirm that this is correct.	

Query References	Query	Remarks
16	AUTHOR: Footnote has been moved to the text. Please confirm that this is OK.	
17	AUTHOR: Resetnik, 1938 has been changed to Reshetnik, 1938 so that this citation matches the Reference List. Please confirm that this is correct.	
18	AUTHOR: As a consequence, similar to the suggestion of Chişamera <i>et al.</i> (2013) for the inclusion of <i>S. graecus s.s.</i> in annexes II and IV of the EU Habitats Directive, we believe it is extremely important that the experts of the International Union for Conservation of Nature (IUCN) Species Survival Commission, Small Mammal Specialist Group, re-evaluate the status of <i>S. antiquus</i> and <i>S. isticus</i> , and possibly also bring their conservation status to the attention of decision-makers at the EU level. Edited text ok?	
19	AUTHOR: Altschul, Gish, Miller, Myers, Lipman, 1990 has not been cited in the text. Please indicate where it should be cited; or delete from the Reference List.	
20	AUTHOR: Please supply the volume number and page range for Reference Chişamera, Bužan, Sahlean, Murariu, Zupan, Krystufek 2013.	
21	AUTHOR: Please check this website address and confirm that it is correct. (Please note that it is the responsibility of the author(s) to ensure that all URLs given in this article are correct and useable.)	
22	AUTHOR: Please supply the volume number and page range for Reference Kryštufek, Ivanitskaya, Arslan, Arslan, Buzan 2012.	
23	AUTHOR: Nehring, 1897 has not been cited in the text. Please indicate where it should be cited; or delete from the Reference List.	
24	AUTHOR: The following figures are assumed to be colour on the web only: Figures 2. If you wish these to be printed in colour, please complete and submit a colour work agreement form (unless you have already done so). The form can be downloaded here: http://www.blackwellpublishing.com/pdf/SN_Sub2000_F_CoW.pdf	
25	AUTHOR: Please check table layout, particularly the table head.	
26	AUTHOR: Please check table layout, particularly the table head.	

Old views and new insights: taxonomic revision of the Bukovina blind mole rat, *Spalax graecus* (Rodentia: Spalacinae)

ATTILA NÉMETH¹, ZALÁN G. HOMONNAY¹, VIRÁG KRÍZSIK², MÁTÉ CSORBA³, TOMÁŠ PAVLÍČEK⁴, ZSOLT HEGYELI⁵, YARIN HADID⁴, SZILÁRD SUGÁR⁵, JÁNOS FARKAS¹ and GÁBOR CSORBA^{2*}

¹*Eötvös Loránd University, Budapest, Hungary*

²*Hungarian Natural History Museum, Budapest, Hungary*

³*Szent István University, Gödöllő, Hungary*

⁴*Institute of Evolution, University of Haifa, Haifa, Israel*

⁵*Milvus Group' Bird and Nature Protection Association, Tîrgu Mureş, Romania*

Received 29 May 2013; revised 7 August 2013; accepted for publication 9 August 2013

As a result of their rather uniform external appearance and gross cranial morphology, the systematics of blind mole rats has been hotly debated over the last century; however, the separation of the large-bodied and small-bodied blind mole rats at the genus level (*Spalax* and *Nannospalax*, respectively), suggested earlier on morphological grounds, is strongly supported by recent molecular biological evidence. The species of *Spalax* have so far been distinguished from each other by cranial traits only, especially the outline of sutures of the cranium, and the shape and relative size of the nasal and parietal bones. Based on mitochondrial DNA sequences (with the widest taxonomic and geographic coverage so far) and detailed anatomical comparisons of museum specimens, we herewith provide a revision of the taxonomic and phylogenetic status of the westernmost representative of the genus, *Spalax graecus* s.l. We clarify that *antiquus* and *isticus* – presently regarded as synonyms of *graecus* – are well-defined species, and they together form a separate clade within *Spalax*. The robustness of our conclusions is supported by the combined evidence of morphology, multilocus phylogeny, species distribution, and taxon history (species congruence with past tectonic and climate events).

© 2013 The Linnean Society of London, *Zoological Journal of the Linnean Society*, 2013

doi: 10.1111/zoj.12081

ADDITIONAL KEYWORDS: *antiquus* – cytochrome *b* – *isticus* – *mezosegiensis* – molecular phylogeny – morphology – Spalacinae.

INTRODUCTION

The Eurasian blind mole rats (subfamily Spalacinae) are adapted exclusively to underground life (Méhely, 1909; Topachevskii, 1969; Savić & Nevo, 1990). Species of the group can be found in the Balkan Peninsula, in steppe grasslands in Central and Eastern Europe, in the Middle East (Asia Minor and the coastline of the Levant), and in a narrow coastal strip in north-east Africa (Musser & Carleton, 2005).

Because of their rather uniform external appearance and gross cranial morphology, the systematics of blind mole rats has been hotly debated over the last century. The first comprehensive work, a milestone in blind mole rat systematics, was published by Méhely (1909) who, based on his study of subtle differences in cranial and dental structures, recognized one genus with three subgenera and eight species, with 14 additional subspecies. His opinion was later regarded as overly 'splitting', whereas at the other extreme Ellerman & Morrison-Scott (1951) accepted only three species in one genus. It is worth noting that these

*Corresponding author. E-mail: csorba@nhmus.hu

latter authors conducted no detailed comparisons of the taxa they synonymized. The next baseline work in Spalacinae systematics was published by the outstanding Ukrainian morphotaxonomist, Topachevskii (1969), who, after studying hundreds of specimens, basically came to the same conclusions as Méhely (1909) as regards the genus-group systematics. However, his concept of a basic taxonomic divide between 'small' and 'large' blind mole rats, although supported by craniodental differences, was not always followed in the literature published in English (e.g. Savić & Nevo, 1990; Nevo, Ivanitskaya & Beiles, 2001; Musser & Carleton, 2005), but traditionally was accepted in the Russian mammalogical works (e.g. Resetnik, 1941; Gromov *et al.*, 1963; Pavlinov & Rossolimo, 1987). Nevertheless, as cytogenetic (Lyapunova, Vorontsov & Martynova, 1971) and molecular genetic (Hadid *et al.*, 2012) works provided further support of deep taxonomic divergences within the subfamily, and support of the presence of two genera (*Spalax* and *Nannospalax*), this old-established classification scheme has finally been accepted in the most recent publications (Németh *et al.*, 2009; Arslan, Akan & Zima, 2011, Kryštufek *et al.*, 2012, Chişamera *et al.*, 2013).

Whereas the exclusively subterranean lifestyle of blind mole rats defines the phenotype, and effectively narrows the range of anatomical variations, meticu-

lous morphological studies can reveal sound osteological and dental characters with taxonomic meaning, and the applicability of such traits in the taxonomy of the large-bodied blind mole rats has been widely accepted. The species of the genus *Spalax* have so far been distinguished from each other by cranial traits only, especially the outline of sutures of the cranium, and the shape and relative size of the nasal and parietal bones (Méhely, 1909; Topachevskii, 1969; Korobchenko & Zagarodnyuk, 2009). According to presently accepted views, six species distributed from Romania to Kazakhstan in the western part of the Eurasian steppe zone are recognized (IUCN, 2012; Fig. 1), namely *Spalax arenarius* Reshetnik, 1938; *Spalax giganteus* Nehring, 1898; *Spalax graecus* Nehring, 1898; *Spalax microphthalmus* Gldenstaedt, 1770; *Spalax uralensis* Tiflov and Usov, 1939, and *Spalax zemni* (Erxleben, 1777) (Musser & Carleton, 2005).

The currently known localities of *S. graecus* (Fig. 2), the westernmost representative of the genus, can be found in three areas separated by the Carpathians (Zagorodnyuk & Coroiu, 2008; see map in Chişamera *et al.*, 2013). These isolated populations can be assigned to described taxa, the nomenclatural history of which is summarized by Chişamera *et al.* (2013). Accordingly, the nominotypical form *graecus* *graecus* Nehring, 1898 occurs in Ukrainian and

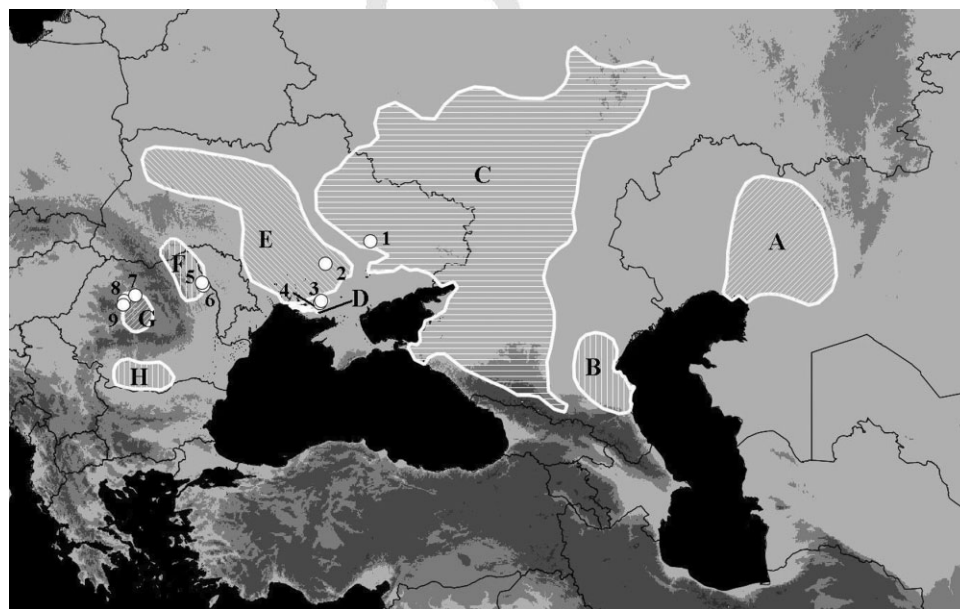


Figure 1. Distribution of *Spalax* species (capitals) and the geographic origin of the investigated tissue samples (numerals). Distribution areas are based on the International Union for Conservation of Nature (IUCN) Red List maps, Chişamera *et al.* (2013), and our own data. A, *Spalax uralensis*; B, *Spalax giganteus*; C, *Spalax microphthalmus*; D, *Spalax arenarius*; E, *Spalax zemni*; F, *Spalax graecus* s.s.; G, *Spalax antiquus*; H, *Spalax isticus*. 1, Novomoszkovsz; 2, Krivij Rig; 3, Kherson Province; 4, Tzurupinsk District; 5, David Valley, Iasi; 6, Dealul lui Dumnezeu; 7, Budeşti; 8, Aiton; 9, Sânduleşti.



Colour online. B&W in print

Figure 2. Live specimen of *Spalax graecus* from David Valley, Iasi, Romania (photo: G. Csorba).

Romanian Bukovina, *isticus* Méhely, 1909 is known from Oltenia and Muntenia, Romania, and two forms, *antiquus* Méhely, 1909 and *mezosegiensis* Szunyoghy, 1937, were described from Transylvania, Romania. The last three names mentioned are generally regarded as synonyms of *graecus*, although their taxonomic status is usually not discussed (Pavlinov & Rossolimo, 1987, 1998; Gromov & Erbaeva, 1995; Pavlinov, Yakhontov & Agadjanian, 1995; Musser & Carleton, 2005). Interestingly, Topachevskii (1969) recognized *isticus* as a valid subspecies of *graecus*, and Murariu & Torcea (1984) found it specifically distinct from other species recorded from Romania. However, these conclusions were questioned because they were based on the small sample size of the specimens studied (Musser & Carleton, 2005).

Apart from the morphological approaches, only two papers deal with the phylogenetic relationships of *graecus* (and *Spalax* species in general) based on molecular methods. In their consensus tree (based on five mitochondrial sequences), Hadid *et al.* (2012) showed that within the *Spalax* lineage the Bukovinian and Transylvanian samples formed two separate clades. The average difference separating these two clades is similar to the genetic difference found between two well-established species, *arenarius* and *zemni*. Chişamera *et al.* (2013) examined the phylogenetic relationship of *graecus graecus* with the three species (each regarded as superspecies by, for example: Musser & Carleton, 2005; Németh *et al.*, 2009) of *Nannospalax*, and regarding the relationship of the two genera arrived at the same conclusion as Hadid *et al.* (2012). Nevertheless, because of the lack of available material from other populations of *S. graecus* – although their investigation was regarded as a crucial issue – Chişamera *et al.* (2013) had to restrict their study to the nominotypical form.

The aim of the present paper is to fill this gap in our knowledge, and based on mitochondrial DNA (mtDNA) sequences of *Spalax* species (with the widest taxonomic and geographic coverage so far) and detailed anatomical comparisons of museum specimens – including the types of *mezosegiensis* and *isticus* and historical topotype material of *antiquus* – to provide a revision of the taxonomic and phylogenetic status of *S. graecus* and its subspecies.

MATERIAL AND METHODS

SAMPLES

The museum specimens investigated are held in the following collections: ‘Grigore Antipa’ National Museum of Natural History, Romania (GAM); Hungarian Geological and Geophysical Institute, Hungary (MÁFI); Hungarian Natural History Museum, Hungary (HNHM); Department of Evolutional and Genetical Systematics of Schmalhausen Institute of Zoology, Ukrainian Academy of Sciences, Ukraine (SIZUAS); Székely National Museum, Romania (SZNM); Palaeontological Museum, Ukrainian Academy of Sciences, Ukraine (PMUAS); Zoological Museum of Moscow State University, Russia (ZMMU); and Zoological Museum, Ukrainian Academy of Sciences, Ukraine (ZMUAS).

The specimens used in the morphological comparisons were as follows:

Spalax arenarius Ukraine: ZMUAS ($N = 1$, paralectotype), HNHM ($N = 2$)

Spalax giganteus Russia: ZMUAS ($N = 10$), GAM ($N = 1$), HNHM ($N = 1$)

Spalax graecus antiquus Romania: SZNM ($N = 2$), MÁFI ($N = 1$), HNHM ($N = 3$)

Spalax graecus graecus Ukraine: SIZUAS ($N = 1$), ZMUAS ($N = 13$), Romania: HNHM ($N = 1$)

Spalax graecus isticus Romania: HNHM ($N = 2$, lectotype and paralectotype)

Spalax graecus mezosegiensis Romania: HNHM ($N = 3$, lectotype and paralectotypes)

Spalax microphthalmus Ukraine: SIZUAS ($N = 4$), ZMUAS ($N = 27$), HNHM ($N = 3$) Russia: HNHM ($N = 4$)

Spalax uralensis Kazakhstan: ZMMU ($N = 3$), HNHM ($N = 1$)

Spalax zemni Ukraine: ZMUAS ($N = 2$), PMUAS ($N = 10$), HNHM ($N = 4$)

Live animals (Table 1) captured for genetic sampling were handled in the field in accordance with guidelines approved by the American Society of Mammalogists (Gannon, Sikes & the Animal Care and Use Committee of the American Society of Mammalogists, 2007). The animals were caught by breaking open the tunnel system and capturing the animal trying to mend the

Table 1. Blind mole rat taxa, origin of tissue samples, and GenBank accession numbers of all sequences used in the phylogenetic reconstructions

Taxon	Locality	Voucher no.	Accession numbers						
			<i>NADH1</i>	<i>12S RNA</i>	<i>16S RNA</i>	tRNA-Val	tRNA-Leu	cytochrome <i>b</i>	
<i>arenarius</i>	Kherson, Ukraine	23215	HQ652218	HQ652149	HQ652193	HQ652325	HQ652281	KF021254	
<i>arenarius</i>	Tzurupinsk, Ukraine	23216	HQ652218	HQ652149	HQ652193	HQ652325	HQ652281	KF021255	
<i>arenarius</i>	Kherson, Ukraine	23217	-	-	-	-	-	KF021262	
<i>gracius</i> s.s.	David Valley, Romania	23202	HQ652219	HQ652150	HQ652194	HQ652326	HQ652282	KF021251	
<i>gracius</i> s.s.	David Valley, Romania	23204	-	-	-	-	-	KF021252	
<i>gracius</i> s.s.	Dealul lui Dumnezeu, Romania	23206	-	-	-	-	-	KF021253	
<i>antiquus</i>	Aiton, Romania	23003	HQ652214	HQ652147	HQ652191	HQ652323	HQ652279	KF021256	
<i>antiquus</i>	Sândulești, Romania	23189	-	-	-	-	-	KF021257	
<i>antiquus</i>	Budești, Romania	23532	-	-	-	-	-	KF021263	
<i>microphthalmus</i>	Novomoszkovsz, Ukraine	23221	HQ652220	HQ652127	HQ652172	HQ652305	HQ652260	KF021258	
<i>microphthalmus</i>	Novomoszkovsz, Ukraine	23222	HQ652220	HQ652127	HQ652172	HQ652305	HQ652260	KF021259	
<i>zemni</i>	Krivij Rig, Ukraine	23219	HQ652219	HQ652150	HQ652194	HQ652326	HQ652282	KF021260	
<i>zemni</i>	Krivij Rig, Ukraine	23220	HQ652219	HQ652150	HQ652194	HQ652326	HQ652282	KF021261	
<i>Nannospalax judaei</i>	Anza, Israel	-	HQ652226	HQ652133	HQ652177	HQ652310	HQ652265	JN571135	
<i>Acomys cahirinus</i>	-	-	HQ652223	HQ652130	HQ652063	HQ652285	HQ652251	AJ012017	

Vouchers are stored in the Hungarian Natural History Museum). (HNHM).

damage (Németh *et al.*, 2007). After biopsy of hindfoot skin matrix (applying topical and systemic anaesthesia and 70% alcohol disinfection) for DNA analysis, individuals were released at the site of capture straight into their own tunnel. Tissue samples were kept in 96% ethanol and stored at -20 °C. The museum specimens of *giganteus*, *isticus*, and *uralensis* yielded no useable genetic material.

CYTOCHROME *B* SEQUENCE ANALYSIS

Total DNA was extracted from recently collected tissue samples (Table 1) using DNeasy Blood and Tissue Kit (Qiagen) according to the standardized extraction protocol. The sequences of cytochrome *b* were amplified with polymerase chain reaction (PCR) using F-muarso (5'-ATGACATGAAAAATCATYGTGG T-3') and R-muarso (5'-GAAATATCATTCKGGTTT AATRTG-3') primers (Pfinder, Holzgang & Frey, 2004). The polymerase chain reaction was performed in a final reaction volume of 25 µL containing 30 ng template DNA, 1 µM of each oligonucleotide primer, 1.5 µM of MgCl₂, 0.16 µM of deoxynucleoside triphosphates (dNTPs), and 0.5 U of AmpliTaq DNA polymerase (Applied Biosystems). PCR amplification was conducted in a DNA Engine Dyad (MJ Research) machine: 94 °C for 2 min, followed by 45 cycles of 94 °C for 45 s, 48 °C for 15 s (ramp speed: 1°C s⁻¹), 60 °C for 1 s (ramp speed: 0.5°C s⁻¹), and 72 °C for 2 min (ramp speed: 1°C s⁻¹), with a final extension step of 72 °C for 7 min. The PCR product was checked on 1.6% agarose gel stained with ethidium bromide and cleaned with High Pure PCR Product Purification Kit (Roche). The PCR product with AmpliTaq generated 3' overhangs and was ligated into pGEM Easy vector (Promega) and transformed into JM109-competent cells (supplied with pGEM Easy Vector Systems II). The positive white colonies were used for colony PCR with the T7 and SP6 promoter primer sites of the pGEM Easy vector. The positivity of the products was checked on 1.6% agarose and then cleaned with the Pure PCR Product Purification Kit (Roche). To minimize the risk of nucleotide substitutions during the PCR and sequencing reaction, sequences of three clones from each sample were determined. The sequencing reaction was accomplished in GeneAmp PCR System 9700 according to the thermal profile of 94 °C for 4 min followed by 25 cycles of 94 °C for 30 s, 50 °C for 15 s, and 60 °C for 4 min. The sequencing reaction was carried out in 10 µL of 80 ng template DNA, 2 µL of BigDye v3.1 Terminator, 2 µL of 5x buffer, and 2 µL of T7 and SP6 primer (5 µM). We used the BigDye XTerminator Purification Kit for cleaning. Sequences for both directions were obtained by using the AB3130 Genetic Analyser.

PHYLOGENETIC RECONSTRUCTION

Phylogenetic and molecular evolutionary analyses were constructed using MEGA 5 (Tamura *et al.*, 2011). For a combined sequence data set (4482–4486 bp in total), besides the cytochrome *b* data a further five mitochondrial sequences (*NADH1*, *12S* rRNA, *16S* rRNA, tRNA-Leu (UUR), tRNA-Val) investigated by Hadid *et al.* (2012) were downloaded from GenBank. Both cytochrome *b* sequences and the combined sequence data set were used for evolutionary divergence estimation using Kimura's two-parameter model of evolution (Kimura, 1980). A phylogenetic dendrogram was constructed by using the maximum-likelihood method. To confirm tree topology, neighbour-joining (Saitou & Nei, 1987) and maximum-parsimony analyses were also carried out. Bootstrap analysis was based on 10 000 resamplings (Felsenstein, 1985). Sequences of *Acomys cahirinus* (spiny mouse) and *Nannospalax judaei* were used as out-groups.

RESULTS

MOLECULAR PHYLOGENY BASED ON CYTOCHROME *B*

Forward and reverse sequence alignments, for each individual, and multiple sequence alignments were made using Vector NTI Advance 9.0 sequence analysis software (InforMax; Invitrogen). All sequences were checked for the presence of the stop codon

with the Open Reading Frame Finder tool of NCBI. Sequences generated in the present study are deposited in GenBank under accession numbers KF021251–KF021263 (Table 1).

Phylogenetic reconstruction based on an 844-bp alignment of cytochrome *b* sequences of *Spalax* samples resulted in the separation of five discrete phylogenetic groups. The presence of five phylogenetic groups was supported by all of the analytical methods tested: maximum-likelihood (Fig. 3), maximum-parsimony, and neighbour-joining analyses (not shown here). The well-supported separation of these five groups could be seen in the matrix of the estimated evolutionary divergence (Table 2). Within-group genetic divergences calculated by Kimura's two-parameter model ranged between 0.00 and 0.60%, whereas values among groups varied between 5.23 and 12.76%. Four out of the five groups are considered as different species (*arenarius*, *graecus*, *microphthalmus*, and *zemni*; Musser & Carleton, 2005). Evolutionary divergence values within the fifth group containing the Transylvanian samples (representing three populations) ranged from 0.12 to 0.36%, which corresponds to the range of the intraspecies values of the other four species. Samples of the recognized fifth group formed a distinct sister group of *graecus s.s.* (Fig. 3), and evolutionary divergence among samples within these two groups were estimated between 6.25 and 6.65% (Table 2).

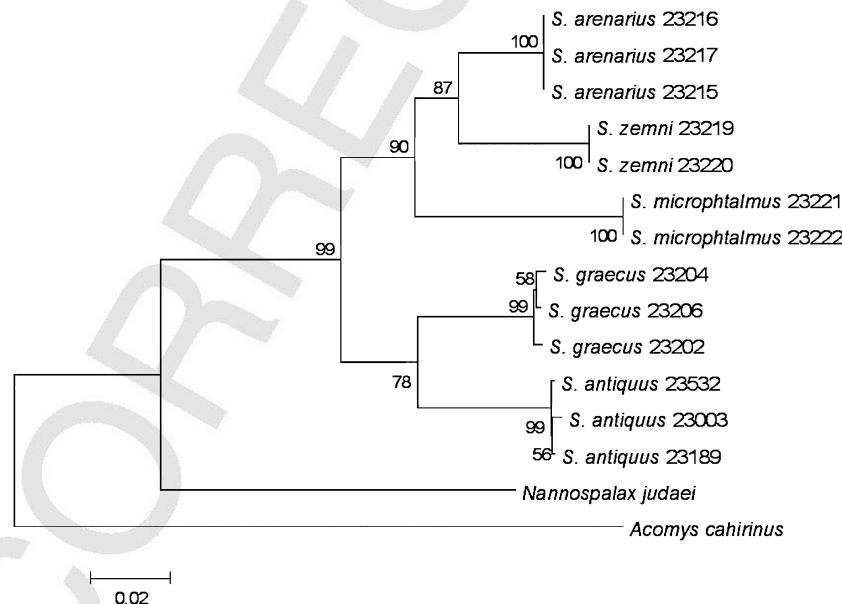


Figure 3. Maximum-likelihood tree reconstructed from an 844-bp alignment of cytochrome *b* sequences of *Spalax* species. *Acomys cahirinus* and *Nannospalax judaei* were used as out-groups. The percentage of trees in which the associated taxa clustered together (after 10 000 replications) is shown next to the branches. The bar represents the number of substitutions per site.

Table 2. Estimates of evolutionary divergence between *Spalax* species based on 844 positions of cytochrome *b* sequences

	<i>graecus</i> 23202	<i>graecus</i> 23204	<i>graecus</i> 23206	<i>arenarius</i> 23215	<i>arenarius</i> 23216	<i>arenarius</i> 23217	<i>antiquus</i> 23532	<i>antiquus</i> 23003	<i>antiquus</i> 23189	<i>microphthalmus</i> 23221	<i>microphthalmus</i> 23222	<i>zemni</i> 23219	<i>zemni</i> 23220	<i>Nannospalax</i> <i>judaei</i>	<i>Acomys</i> <i>cahirinus</i>
<i>graecus</i> 23202															
<i>graecus</i> 23204	0.60														
<i>graecus</i> 23206	0.24	0.36													
<i>arenarius</i> 23215	9.46	9.05	9.18												
<i>arenarius</i> 23216	9.32	9.19	9.04	0.12											
<i>arenarius</i> 23217	9.46	9.05	9.18	0.00	10.73										
<i>antiquus</i> 23532	6.26	6.52	6.26	10.73	10.59	10.73									
<i>antiquus</i> 23003	6.25	6.51	6.25	10.72	10.58	10.72	0.36								
<i>antiquus</i> 23189	6.39	6.65	6.39	10.59	10.44	10.59	0.12	0.24							
<i>microphthalmus</i> 23221	12.01	12.02	12.30	7.99	8.13	7.99	12.76	12.75	12.61						
<i>microphthalmus</i> 23222	11.86	12.16	12.15	8.13	7.99	8.13	12.61	12.60	12.46	0.12					
<i>zemni</i> 23219	10.72	10.87	10.72	5.36	5.23	5.36	11.31	11.59	11.45	9.67	9.53				
<i>zemni</i> 23220	10.72	10.87	10.72	5.36	5.23	5.36	11.31	11.59	11.45	9.67	9.53	0.00			
<i>Nannospalax judaei</i>	18.70	18.84	18.54	18.60	18.44	18.60	16.81	16.96	16.66	20.15	19.99	18.93	18.93		
<i>Acomys cahirinus</i>	27.53	27.54	27.72	27.51	27.51	27.51	25.85	26.40	26.04	26.62	26.62	27.70	27.70	26.02	

Values were calculated using Kimura's two-parameter model and are given as percentages.

MOLECULAR PHYLOGENY BASED ON COMBINED DATA SET OF SIX MTDNA SEQUENCES

The phylogenetic reconstruction based on the alignment of 4507 bp and representing six mitochondrial genes resulted in congruent topologies with maximum-likelihood, maximum-parsimony, and neighbour-joining methods. Therefore, only the maximum-likelihood tree is discussed here (Fig. 4). Similar to the results of the cytochrome *b* analysis (Fig. 3), the evolutionary divergence value estimated based on the data set of the six mitochondrial sequences confirmed the distinction of five different groups of samples (Table 3). Interspecific divergence values among these samples varied between 3.57 and 8.65%, whereas intraspecific values were two orders lower: 0.02–0.04%. The divergence between the samples 23202 and 23003 (*graecus s.s.* and *antiquus*, respectively; see Table 1) was estimated as 4.98%, which confirms the divergence of the Transylvanian samples at the species level.

MORPHOLOGICAL COMPARISONS

The anatomical nomenclature used (Figs 5, 6) follows that of Méhely (1909) and Topachevskii (1969); the characters are applicable to fully grown adult specimens.

The definition of the graecus group

The clade on both the cytochrome *b* and the consensus trees comprising *graecus s.s.* and Transylvanian *antiquus*, is strongly supported by all analytical methods. This monophyletic clade is designated here-with as the *graecus* group, which can be separated morphologically from all the remaining *Spalax* species by the following unique cranial traits: (1) the length of the nasal bone equals or exceeds the total length of the frontal and parietal bones measured alongside the main axis of the skull (Fig. 7A, B) (versus nasal length relatively shorter in all other species, Fig. 7D); and (2) sella externa of the mandible always situated higher than sella interna. Beside *graecus s.s.* and *antiquus*, the type material of *mezosegiensis* and *isticus* (Fig. 7C) also show these distinguishing morphological features, therefore the *graecus* group is extended for these named forms as well.

Comparison between antiquus and graecus s.s.

The taxon *antiquus* differs markedly from *graecus s.s.* in the following characters: (1) anterior width of the nasal bone is more than twice the posterior width (versus anterior width exceeds less than twice the posterior width); (2) the nasal bones shorter posteriorly than the premaxillae (the nasale always extends posteriorly beyond the premaxillae in *graecus s.s.*)

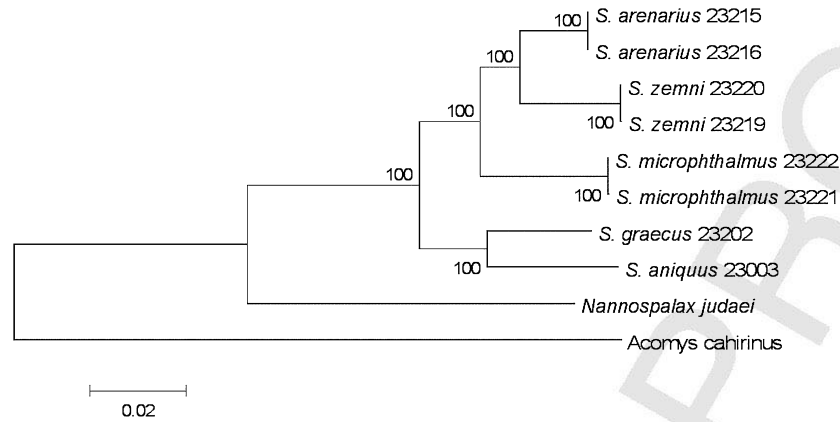


Figure 4. Maximum-likelihood tree reconstructed from a 4507-bp alignment of six mitochondrial sequences of *Spalax* species [cytochrome *b*, *NADH1*, *12S* rRNA, *16S* rRNA, tRNA-Leu (UUR), tRNA-Val]. *Acomys cahirinus* and *Nannospalax judaei* were used as out-groups. The percentage of trees in which the associated taxa clustered together (after 10 000 replications) is shown next to the branches. The bar represents the number of substitutions per site.

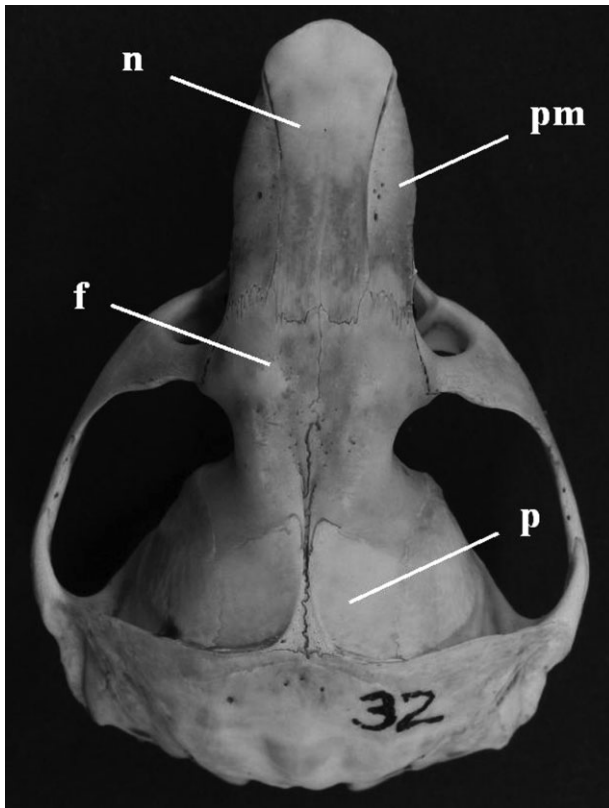


Figure 5. Dorsal view of skull of *Spalax graecus* s.s. (topotype from Chernovcy, Ukraine, ZMUAS 32). Abbreviations: f, frontal bone; p, parietal bone; pm, premaxilla; n, nasal bone.

(Fig. 7A, B, respectively); and (3) on the mandible the bottom of the incisura corono-alveolaris (the groove between the coronoid and alveolar processes) is domed (whereas this structure is flat in *graecus* s.s.).

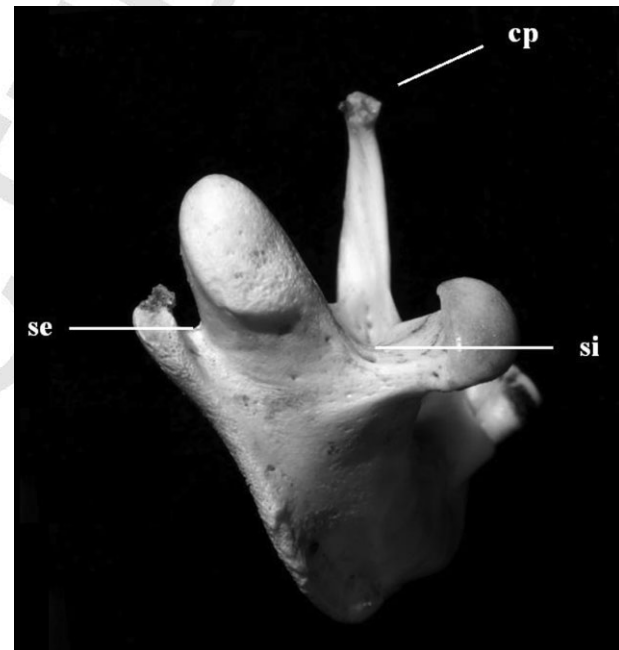


Figure 6. Caudal view of left mandible of *Spalax antiquus* (Leorint, Romania, HNHM 23530). The plane is determined by the axis of the coronoid process. Abbreviations: cp, coronoid process; se, sella externa; si = sella interna.

Comparison between antiquus and mezosegiensis
 When describing the subspecies *graecus mezosegiensis*, Szunyoghy (1937) only had three recent skulls (all in fragmented condition) and used just a single subfossil skull specimen of *antiquus* for comparisons. He acknowledged that ‘the separation [of *mezosegiensis*] from *graecus antiquus* is quite difficult’ (translated from Hungarian), and that the characters

Table 3. Estimates of evolutionary divergence between *Spalax* species based on 4507 positions of six mitochondrial sequences [cytochrome *b*, *NADH1*, *12S* rRNA, 16S rRNA, tRNA-Leu (UUR), tRNA-Val]

	<i>Acomys cahirinus</i>	<i>graecus</i> 23202	<i>aniquus</i> 23003	<i>arenarius</i> 23215	<i>arenarius</i> 23216	<i>microphthalmus</i> 23222	<i>microphthalmus</i> 23221	<i>zemni</i> 23220	<i>zemni</i> 23219	<i>Nannospalax judaei</i>
<i>Acomys cahirinus</i>	24.39									
<i>graecus</i> 23202	24.15	4.98								
<i>antiquus</i> 23003	24.00	7.20	8.09							
<i>arenarius</i> 23215	24.00	7.18	8.06	0.02						
<i>arenarius</i> 23216	24.35	7.50	8.32	5.04	5.01					
<i>microphthalmus</i> 23222	24.38	7.56	8.37	5.04	5.06	0.04				
<i>microphthalmus</i> 23221	24.79	7.81	8.62	3.59	3.57	5.70	5.75			
<i>zemni</i> 23220	24.82	7.84	8.65	3.61	3.59	5.72	5.72	0.02		
<i>zemni</i> 23219	23.31	14.36	13.80	13.78	13.75	14.36	14.42	14.23	14.26	
<i>Nannospalax judaei</i>										

Values were calculated using Kimura's two-parameter model and are given as percentages.

thought to be diagnostic might prove to be individual differences. These characters include the parallel edges at the proximal part of the nasal bones, the wider upper zygomatic process of the maxilla, the relatively more elongated nasal bones, the shape of the frontonasal suture, slight differences in the shape of mandibular processes, and the occlusal pattern of the lower molars in the subadult specimen. After critical examination of these traits in the larger series of Transylvanian *Spalax* specimens (nine individuals, including subfossil and recent materials), we have come to the conclusion that none of these mentioned features can serve as distinguishing characters between the two forms, but indeed represent individual or age-related variations. As a consequence, because of the lack of differentiating features *mezosegiensis* is regarded herewith as the junior subjective synonym of *antiquus*.

Comparison of isticus with antiquus and graecus

The original description of *isticus* was based on three specimens from three different locations in Oltenia and Muntenia (Méhely, 1909). These were the only known exemplars of the taxon until Murariu & Torcea (1984) reported three further individuals collected in an unspecified locality from the Oltenia region. The authors provided no registration numbers for the material, but stated that it is 'deposited in the scientific collection of the "Grigore Antipa" Natural History Museum of Bucharest' (Murariu & Torcea, 1984: 248). Although the specimens, subsequently shared between the collections of GAM and the Muzeul Olteniei, Craiova, cannot be traced and are now regarded as lost (D. Murariu, pers. comm. 2010), a drawing of one of the skulls (Murariu & Torcea, 1984: 249, fig. 1A) and a generalized description of the material is given in the paper, and can be used for comparisons. Murariu & Torcea (1984) compared their newly acquired specimens with '*microphthalmus*' (without any reference to a collection or inventory number) from southern Moldavia. Certainly, '*microphthalmus*' does not occur in that area (its western distributional limit is the Dnieper River) but the drawing (Murariu & Torcea, 1984: 249, fig. 1B) depicting this specimen clearly shows the typical characteristics of the rostral part of *graecus* s.s. The features described of the GAM *isticus* material compare favourably with those of the type series. Based on the descriptions and direct investigations (altogether six individuals), *isticus* could be separated from the other species of the *graecus* group by the following characters: (1) the rostrum is narrowed above, the width at the foramen infraorbitale is less than the basal rostral width measured at the lower zygomatic process of the maxilla (whereas the rostrum is wider, foramen



Figure 7. Dorsal view of skulls showing the rostral structure of (A) *Spalax antiquus* (from Leorint, Romania, HNHM 23530), (B) *Spalax graecus s.s.* (topotype from Chernovcy, Ukraine, ZMUAS 11214), (C) *Spalax isticus* (paralectotype from Horezu Poenari, Romania, HNHM 2522.4), and (D) *Spalax zemni* (from Krivij Rig, Ukraine, HNHM 2009.37.9.). Not to scale.

infraorbitale width equals the basal rostral width in *antiquus* and *graecus s.s.*); (2) the anterior width of the nasal bone exceeds less than twice the posterior width (versus anterior width more than twice of posterior width in *antiquus*); (3) the nasal bones shorter posteriorly than the premaxillae (in sharp contrast with *graecus s.s.* where the nasale always extends posteriorly beyond the premaxillae) (Fig. 7B, C); and (4) the bottom of the incisura corono-alveolaris is domed (flat in *graecus s.s.*).

DISCUSSION

The phylogenetic separation of the large-bodied and small-bodied blind mole rats at the genus-group

level (*Spalax* and *Nannospalax*), as suggested earlier on morphological grounds (Méhely, 1909; Ognev, 1947; Topachevskii, 1969), and strongly supported by the recent molecular biological evidence (Hadid *et al.*, 2012; Chişamera *et al.*, 2013), is further corroborated by the results of the present investigation. Based on the fossil records (Nevo & Bar-El, 1976; Catzefflis *et al.*, 1989), the separation of *Spalax* and *Nannospalax* happened during the dry late Miocene (8.24–7.10 Mya), and could be attributed to the establishment of a marine barrier between Asia Minor and the Balkan Peninsula during the Tortonian (11.6–7.2 Mya; Popov *et al.*, 2006; Akkiraz *et al.*, 2011). The colonization of the Balkan Peninsula by *Nannospalax* from Asia Minor took place at a later date (Hadid

et al., 2012), and was possibly responsible for the push of *Spalax* from the lowlands to less hospitable regions in the peninsula, where they today survive in small and scattered populations.

The topology of both the cytochrome *b* and the consensus trees shows deep bifurcation within the *Spalax* lineage: one clade includes two taxa of the *graecus* group (as defined above), whereas *arenarius*, *microphthalmus*, and *zemni* constitute the second clade. Based on phenetic markers, Méhely (1909) and Resetnik (1941) also hypothesized a similar branching within the large-bodied blind mole rats. According to molecular dating, this event occurred 3.5–1.8 Mya (average 2.7 Mya), which corresponds to periods of strong climate change caused by changes in the orbital eccentricity (Hadid *et al.*, 2012).

Based on the 844-bp long partial sequences of the cytochrome *b* gene, interspecific divergence within *Spalax* was found to range between 5.23 and 12.76% (estimated using Kimura's two-parameter model). The sequence divergence between *antiquus* and *graecus* *s.s.* ranged between 6.25 and 6.65%, which is much higher than the estimated 2.7% average sequence divergence between sister species among Rodentia (Bradley & Baker, 2001). As the average degree of sequence divergence between *antiquus* populations, calculated with Kimura's two-parameter model, was 0.3%, we concluded that the sequence analyses confirm the taxonomic identity of the three populations. The high level of congruence found between cytochrome *b* tree and the tree constructed on the basis of six mitochondrial sequences (4507 bp in total) strongly supports the specific distinctiveness of *antiquus* from *graecus* *s.s.* The estimated divergence time of these clades (*c.* 1 Mya, range 0.81–1.9 Mya) coincides with the uplift of the Eastern Carpathians (Hadid *et al.*, 2012), which effectively separated the two taxa and halted gene flow between them. As a consequence, taking into consideration the genetic and morphological evidence, *antiquus* is regarded herewith as a separate species within the *graecus* group of *Spalax*.

The analysis of craniodental traits (Méhely, 1909; Murariu & Torcea, 1984; and direct comparisons of the lectotype and paralectotype specimens with large series of all accepted *Spalax* species) undoubtedly shows that *isticus* belongs to the *graecus* group. Although our attempts to extract useable genetic material from the type specimens have failed, cranial features readily distinguish *isticus* from the closely related *antiquus* and *graecus*, expressing the same magnitude of anatomical differences as observed between other species of the same genus (Méhely, 1909; Topachevskii, 1969; Korobchenko & Zagorodnyuk, 2009). The known occurrences of *isticus*

also imply long-term genetic isolation. Therefore, in accordance with Méhely's opinion and the findings of Csorba (2010), we regard this taxon as a separate species.

Based on the discussion above, the following recent species of *Spalax* (type localities in parenthesis), with their (proposed) English names, are accepted herewith:

Spalax antiquus Méhely, 1909 (Transylvanian Plain, Romania) – Méhely's blind mole rat [The geographically reasonable epithet 'Transylvanian' is already in use to name the *Nannospalax (leucodon) transylvanicus* blind mole rat species. The suggested name is in recognition of Méhely's baseline work on Spalacinae systematics.];

Spalax arenarius Reshetnik, 1938 (Golaya Pristan, Ukraine) – sandy blind mole rat;

Spalax giganteus Nehring, 1898 (Makhuch-Kala, Russia) – giant blind mole rat;

Spalax graecus Nehring, 1898 (Chernovcy, Ukraine) – Bukovina blind mole rat;

Spalax isticus Méhely, 1909 (Bârza, Romania) – Oltenia blind mole rat;

Spalax microphthalmus Gldenstaedt, 1770 (Novokhoper steppe, Russia) – greater blind mole rat;

Spalax uralensis Tiflov and Usov, 1939 (Chingerlaur region, Kazakhstan) – Kazakhstan blind mole rat;

Spalax zemni (Erxleben, 1777) (Ternopolsk region, Ukraine) – Podolsk blind mole rat.

These taxonomic and systematic results clarified that both *S. antiquus* and *S. isticus* are poorly known endemic mammal species of Europe, recorded only from the territory of Romania. They have restricted and fragmented ranges, and in spite of recent research efforts *S. isticus* has not been recorded in the last 30 years (Németh *et al.*, 2011). As a consequence, similar to the suggestion of Chişamera *et al.* (2013) for the inclusion of *S. graecus* *s.s.* in annexes II and IV of the EU Habitats Directive, we believe it is extremely important that the experts of the International Union for Conservation of Nature (IUCN) Species Survival Commission, Small Mammal Specialist Group, re-evaluate the status of *S. antiquus* and *S. isticus*, and possibly also bring their conservation status to the attention of decision-makers at the EU level.

ACKNOWLEDGEMENTS

We thank Dumitru Murariu (GAM), László Kordos (MÁFI), Kócs Irén (SZNM), and Sergei Kruskop (ZMMU) for providing access to the specimens under their care. Our special thanks go to the late Ágnes Major for her tireless work and advice in genetic investigations until the very last moments of her life.

András Demeter carefully checked the text for linguistic correctness, and Edvárd Mizsei kindly helped us with the distribution map. In the Ukraine, field and laboratory work were supported by the Ukrainian and Hungarian Academies of Sciences within the frame of the bilateral scientific agreement, whereas in Romania the blind mole rat research programme was organized as a priority declared by the Hungarian–Romanian Joint Committee on the Environment of the Intergovernmental Environmental Cooperation Agreement. The project was partially financed by the Hungarian Ministry of Rural Development, and supported in various ways by the Hungarian Natural History Museum. G.C. is especially grateful to Masaharu Motokawa of the Kyoto University Museum for providing ideal working conditions while staying there under a visiting professorship programme.

REFERENCES

- Akkiraz MS, Akgün F, Utescher T, Bruch AA, Mosbrugger V. 2011.** Precipitation gradients during the Miocene in Western and Central Turkey as quantified from pollen data. *Palaeogeography, Palaeoclimatology, Palaeoecology* **304**: 276–290.
- Altschul SF, Gish W, Miller W, Myers EW, Lipman DJ. 1990.** Basic local alignment search tool. *Journal of Molecular Biology* **215**: 403–410.
- Arslan A, Akan S, Zima J. 2011.** Variation in C-heterochromatin and NOR distribution among chromosomal races of mole rats (Spalacidae) from Central Anatolia, Turkey. *Mammalian Biology* **76**: 28–35.
- Bradley RD, Baker RJ. 2001.** A test of the genetic species concept: cytochrome-b sequences and mammals. *Journal of Mammalogy* **82**: 960–973.
- Catzeffis F, Nevo E, Ahlquist JE, Sibley CG. 1989.** Relationships of the chromosomal species in the Eurasian mole rats of the *Spalax ehrenbergi* group as determined by DNA–DNA hybridization, and an estimate of the spalacid–murid divergence time. *Journal of Molecular Evolution* **29**: 223–232.
- Chişamera G, Bužan EV, Sahlean T, Murariu D, Zupan S, Krystufek B. 2013.** Bukovina blind mole rat *Spalax graecus* revisited: phylogenetics, morphology, taxonomy, habitat associations and conservation. *Mammal Review* **43**: 1–11. doi: 10.1111/mam.12001.
- Csorba M. 2010.** The taxonomy of Carpathian Basin blind mole rats and consequences on their conservation. Unpublished BSc Thesis, Szent István University, Gödöllő, 51 pp. (in Hungarian).
- Ellerman JR, Morrison-Scott TCS. 1951.** *Checklist of Palearctic and Indian mammals 1758 to 1946*. London: British Museum (Natural History).
- Erxleben JCP. 1777.** *Systema regni animalis*. Göttingen (in Latin).
- Felsenstein J. 1985.** Confidence limits on phylogenies: an approach using the bootstrap. *Evolution* **39**: 783–789.
- Gannon WL, Sikes RS, the Animal Care and Use Committee of the American Society of Mammalogists. 2007.** Guidelines of the American Society of Mammalogists for the use of wild mammals in research. *Journal of Mammalogy* **88**: 809–823.
- Gromov IM, Erbaeva MA. 1995.** *Mlekopitayushchie fauny Rossii i sopredel'nykh territoriy. Zaitseobraznye i gryzuny [The mammals of Russia and adjacent territories (Lagomorphs and rodents)]*. St. Petersburg: Zoological Institute of the Russian Academy of Sciences (in Russian).
- Gromov IM, Gureev AA, Novikov GA, Sokolov II, Strelkov PP, Chapskii K. 1963.** Mammalian Fauna of the USSR. Key to the Fauna of the USSR. Zoological Institute USSR, Izd. AN SSSR: 639 pp. (in Russian).
- Güldenstaedt A. 1770.** *Spalax*, novum glirium genus. *Novi Commentarii Academiae Petropolitanae* **14**: 409–440.
- Hadid Y, Németh A, Snir S, Pavlíček T, Csorba G, Kázmér M, Major Á, Mezhzherin S, Rusin M, Coşkun Y, Nevo E. 2012.** Is evolution of blind mole rats determined by climate oscillations? *PLoS ONE* **7**: e30043. doi:10.1371/journal.pone.0030043.
- IUCN. 2012.** IUCN red list of threatened species. Version 2012.2. Available at: <http://www.iucnredlist.org> Downloaded on 18 March 2013.
- Kimura M. 1980.** A simple method for estimating evolutionary rate of base substitutions through comparative studies of nucleotide sequences. *Journal of Molecular Evolution* **16**: 111–120.
- Korobchenko M, Zagarodnyuk I. 2009.** Taxonomy and levels of differentiation in mole-rats (Spalacidae) of the fauna of Ukraine and adjacent countries. *Scientific Bulletin of the Uzhgorod University (Ser. Biol.)* **26**: 13–26.
- Kryštufek B, Ivanitskaya E, Arslan A, Arslan E, Buzan EV. 2012.** Evolutionary history of mole rats (genus *Nannospalax*) inferred from mitochondrial cytochrome b sequence. *Biological Journal of the Linnean Society* **95**: 1–11. doi: 10.1111/j.1095-8312.2011.01795.x.
- Lyapunova EA, Vorontsov NN, Martynova L. 1971.** Cytological differentiation of burrowing mammals in the Palaearctic. In: Kratochvíl J, Obrtel R, eds. *Symposium Theriologicum II*. Prague: Academia, 203–215.
- Méhely L. 1909.** *Species generis Spalax. A földi kutyák fajai származás- és rendszertani tekintetben*. [Species of the genus *Spalax*] Magyar Tudományos Akadémia. (in Hungarian).
- Murariu D, Torcea Şt. 1984.** The occurrence of the species *Spalax isticus* Méhely 1909 (Rodentia, Spalacidae) in the Romanian Plain. *Travaux du Muséum d'histoire naturelle 'Gr. Antipa'* **26**: 245–249.
- Musser G, Carleton M. 2005.** Superfamily Muroidea. In: Wilson DE, Reeder DM, eds. *Mammal species of the world: a taxonomic and geographic reference*, 3rd edn. Baltimore, MD: The Johns Hopkins University Press, 894–1531.

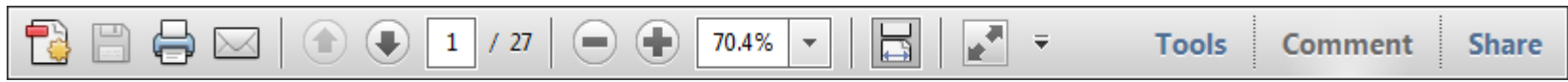
- ~~Nehring A. 1897. Mehrere neue Spalax-Arten. *Sitzungsberichte der Gesellschaft naturforschender Freunde zu Berlin* **10**: 151–183 (in German).~~
- Nehring A. 1898.** Über *Spalax graecus* n.sp. *Zoologische Anzeiger* **21**: 228–230.
- Németh A, Csorba G, Krnács G, Hegyeli Z, Sugár S, Vajda Z, Stojnic N, Delic JL, Kryštufek B. 2011.** Recent extinction of two European mammals? The probable extinction of two mole-rat taxa. In: *Abstract volume 6th European Congress of Mammalogy* Paris, France, p. 102.
- Németh A, Czabán D, Csorba G, Farkas J. 2007.** Egy fokozottan védett emlős, a nyugati földikutya (*Spalax leucodon*) csapdázásának lehetőségei. [Evaluating the methods for live-trapping of the Hungarian lesser blind mole rat (*Spalax leucodon*)]. *Természetvédelmi Közlemények* **13**: 417–421 (in Hungarian with English abstract).
- Németh A, Révay T, Hegyeli Z, Farkas J, Czabán D, Rózsás A, Csorba G. 2009.** Chromosomal forms and risk assessment of *Nannospalax* (superspecies *leucodon*) (Mammalia: Rodentia) in the Carpathian Basin. *Folia Zoologica* **58**: 349–361.
- Nevo E, Bar-El H. 1976.** Hybridization and speciation in fossorial mole rats. *Evolution* **30**: 831–840.
- Nevo E, Ivanitskaya E, Beiles A. 2001.** *Adaptive radiation of blind subterranean mole rats: naming and revisiting the four sibling species of the Spalax ehrenbergi superspecies in Israel: Spalax galili (2n = 52), S. golani (2n = 54), S. carmeli (2n = 58) and S. judaei (2n = 60).* Leiden: Backhuys Publishers.
- Ognev SI. 1947.** *Mammals of the USSR and adjacent countries. Rodents.* Vol. 5. Moskva-Leningrad: Akademia Nauk SSSR (in Russian).
- Pavlinov IJa, Rossolimo OL. 1987.** *Systematics of the mammals of the USSR.* Moscow: Nauka (in Russian).
- Pavlinov IJa, Yakhontov JL, Agadjanian AK. 1995.** *Mammals of Eurasia: systematical and geographical reference (3 parts). Pt. 1. Rodentia.* Archives of the Zoological Museum of Moscow State University. 32. Moscow: Moscow University Press (in Russian).
- Pfunder M, Holzgang O, Frey JE. 2004.** Development of microarray-based diagnostics of voles and shrews for use in biodiversity monitoring studies, and evaluation of mitochondrial cytochrome oxidase I vs. cytochrome *b* as genetic markers. *Molecular Ecology* **13**: 1277–1286.
- Popov SV, Shcherba IG, Ilyina LB, Nevesskaya LA, Paramonova NP, Khondkarian SO, Magyar I. 2006.** Late Miocene to Pliocene palaeogeography of the Paratethys and its relation to the Mediterranean. *Palaeogeography, Palaeoclimatology, Palaeoecology* **238**: 91–106.
- Resetnik EG. 1941.** Materiali do vivchennja sistematiki geografichnovo poshirenija ta ekologiji slipakiv (Spalacidae) v URSS. [Systematics and geographic distribution of mole rats (Spalacidae) in Ukraine SSR.]. *Zbirnyk Prats' of the Zoological Museum of An Ursr* **24**: 23–95 (in Russian).
- Reshetnik EG. 1938.** Systematica and geographic distribution of mole rats – Spalacidae – in Ukraine SSR. *Reports of the Zoological Museum, Kiev* **23**: 3–21 (in Russian).
- Saitou N, Nei M. 1987.** The neighbor-joining method: a new method for reconstructing phylogenetic trees. *Molecular Biology and Evolution* **4**: 406–425.
- Savić I, Nevo E. 1990.** The Spalacidae: evolutionary history, speciation, and population biology. In: Nevo E, Reig AO, eds. *Evolution of subterranean mammals at the organismal and molecular levels.* New York: Alan R. Liss, 129–153.
- Szunyoghy J. 1937.** Egy új *Spalax* Erdélyből. [A new *Spalax* from Transylvania]. *Allattani Közlemények* **34**: 185–191 (in Hungarian with German abstract).
- Tamura K, Peterson D, Peterson N, Stecher G, Nei M, Kumar S. 2011.** MEGA5: molecular evolutionary genetics analysis using maximum likelihood, evolutionary distance, and maximum parsimony methods. *Molecular Biology and Evolution* **28**: 2731–2739.
- Tiflov VE, Usov YA. 1939.** Study of some rodents and their ectoparasites in Western Kazakhstan Region. *Vestnik mikrobiologi, epidemiologi i parazitologii* **17**: 141–143 (in Russian).
- Topachevskii VA. 1969.** *Fauna of the USSR: mammals. mole rats, spalacidae.* Washington, DC: Smithsonian Institution and the National Science Foundation.
- Zagorodnyuk I, Coroiu I. 2008.** *Spalax graecus.* In: IUCN 2012. *IUCN Red List of Threatened Species. Version 2012.2.* <<http://www.iucnredlist.org>>. Downloaded on 21 March 2013.

USING e-ANNOTATION TOOLS FOR ELECTRONIC PROOF CORRECTION

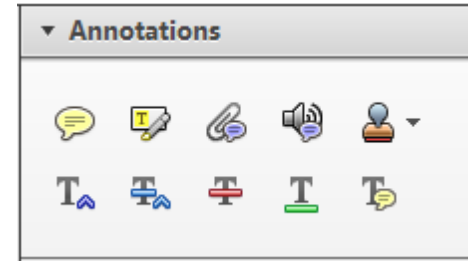
Required software to e-Annotate PDFs: Adobe Acrobat Professional or Adobe Reader (version 8.0 or above). (Note that this document uses screenshots from Adobe Reader X)

The latest version of Acrobat Reader can be downloaded for free at: <http://get.adobe.com/reader/>

Once you have Acrobat Reader open on your computer, click on the [Comment](#) tab at the right of the toolbar:



This will open up a panel down the right side of the document. The majority of tools you will use for annotating your proof will be in the [Annotations](#) section, pictured opposite. We've picked out some of these tools below:



1. Replace (Ins) Tool – for replacing text.

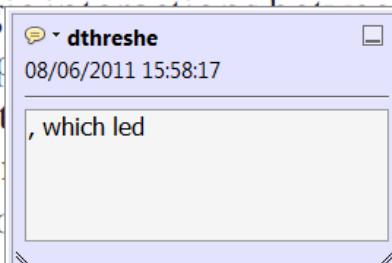


Strikes a line through text and opens up a text box where replacement text can be entered.

How to use it

- Highlight a word or sentence.
- Click on the [Replace \(Ins\)](#) icon in the Annotations section.
- Type the replacement text into the blue box that appears.

standard framework for the analysis of microeconomics. Nevertheless, it also led to the emergence of a new paradigm of strategic behaviour. The number of competitors in the industry is that the structure of the industry is a key component of the main components of the industry. At the micro level, are exogenous variables important works on entry by Shiraz (M henceforth) we open the 'black b



2. Strikethrough (Del) Tool – for deleting text.



Strikes a red line through text that is to be deleted.

How to use it

- Highlight a word or sentence.
- Click on the [Strikethrough \(Del\)](#) icon in the Annotations section.

there is no room for extra profits and the number of competitors are zero and the number of (net) values are not determined by Blanchard and ~~Kiyotaki~~ (1987), perfect competition in general equilibrium. The effects of aggregate demand and supply in the classical framework assuming monopoly are an exogenous number of firms

3. Add note to text Tool – for highlighting a section to be changed to bold or italic.



Highlights text in yellow and opens up a text box where comments can be entered.

How to use it

- Highlight the relevant section of text.
- Click on the [Add note to text](#) icon in the Annotations section.
- Type instruction on what should be changed regarding the text into the yellow box that appears.

dynamic responses of mark ups consistent with the **VAR** evidence

sation... y Ma... and... on n... to a... on... stent also with the demand-



4. Add sticky note Tool – for making notes at specific points in the text.

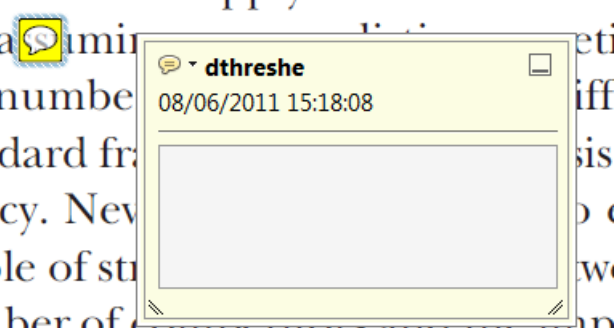


Marks a point in the proof where a comment needs to be highlighted.

How to use it

- Click on the [Add sticky note](#) icon in the Annotations section.
- Click at the point in the proof where the comment should be inserted.
- Type the comment into the yellow box that appears.

and supply shocks. Most of the... a... number... dard fr... cy. Nev... ole of st... ber of competitors and the imp... is that the structure of the secto



USING e-ANNOTATION TOOLS FOR ELECTRONIC PROOF CORRECTION

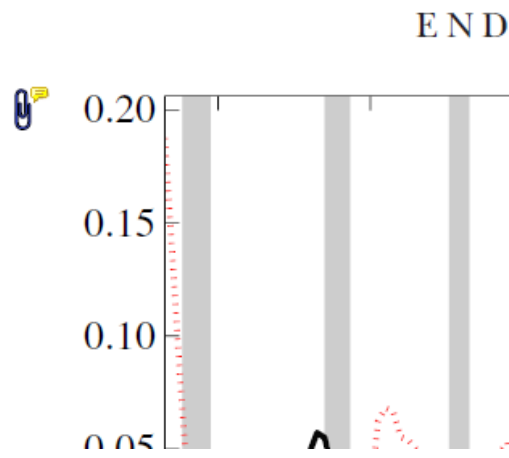
5. Attach File Tool – for inserting large amounts of text or replacement figures.



Inserts an icon linking to the attached file in the appropriate place in the text.

How to use it

- Click on the [Attach File](#) icon in the Annotations section.
- Click on the proof to where you'd like the attached file to be linked.
- Select the file to be attached from your computer or network.
- Select the colour and type of icon that will appear in the proof. Click OK.



6. Add stamp Tool – for approving a proof if no corrections are required.



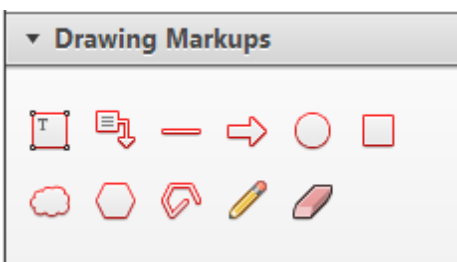
Inserts a selected stamp onto an appropriate place in the proof.

How to use it

- Click on the [Add stamp](#) icon in the Annotations section.
- Select the stamp you want to use. (The [Approved](#) stamp is usually available directly in the menu that appears).
- Click on the proof where you'd like the stamp to appear. (Where a proof is to be approved as it is, this would normally be on the first page).

of the business cycle, starting with the
 on perfect competition, constant ret
 production. In this environment goods
 extra profits and the market for marke
 he market for goods is determined by the model. The New-Key
 otaki (1987), has introduced produc
 general equilibrium models with nomin
 and... Most of this literature

APPROVED

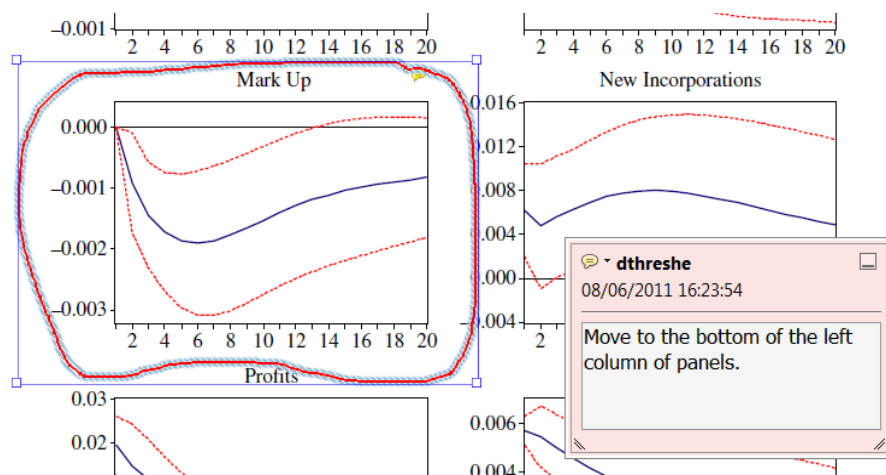


7. Drawing Markups Tools – for drawing shapes, lines and freeform annotations on proofs and commenting on these marks.

Allows shapes, lines and freeform annotations to be drawn on proofs and for comment to be made on these marks..

How to use it

- Click on one of the shapes in the [Drawing Markups](#) section.
- Click on the proof at the relevant point and draw the selected shape with the cursor.
- To add a comment to the drawn shape, move the cursor over the shape until an arrowhead appears.
- Double click on the shape and type any text in the red box that appears.



For further information on how to annotate proofs, click on the [Help](#) menu to reveal a list of further options:

