

ORIGINAL ARTICLE

DISC1–ATF4 transcriptional repression complex: dual regulation of the cAMP–PDE4 cascade by DISC1

T Soda^{1,2,3,4}, C Frank^{1,2,3}, K Ishizuka⁵, A Baccarella¹, Y-U Park⁶, Z Flood^{1,2,3}, SK Park⁶, A Sawa⁵ and L-H Tsai^{1,2,3}

Disrupted-In-Schizophrenia 1 (*DISC1*), a risk factor for major mental illnesses, has been studied extensively in the context of neurodevelopment. However, the role of *DISC1* in neuronal signaling, particularly in conjunction with intracellular cascades that occur in response to dopamine, a neurotransmitter implicated in numerous psychiatric disorders, remains elusive. Previous data suggest that *DISC1* interacts with numerous proteins that impact neuronal function, including activating transcription factor 4 (*ATF4*). In this study, we identify a novel *DISC1* and *ATF4* binding region in the genomic locus of *phosphodiesterase 4D* (*PDE4D*), a gene implicated in psychiatric disorders. We found that the loss of function of either *DISC1* or *ATF4* increases *PDE4D9* transcription, and that the association of *DISC1* with the *PDE4D9* locus requires *ATF4*. We also show that *PDE4D9* is increased by D1-type dopamine receptor dopaminergic stimulation. We demonstrate that the mechanism for this increase is due to *DISC1* dissociation from the *PDE4D* locus in mouse brain. We further characterize the interaction of *DISC1* with *ATF4* to show that it is regulated via protein kinase A-mediated phosphorylation of *DISC1* serine-58. Our results suggest that the release of *DISC1*-mediated transcriptional repression of *PDE4D9* acts as feedback inhibition to regulate dopaminergic signaling. Furthermore, as *DISC1* loss-of-function leads to a specific increase in *PDE4D9*, *PDE4D9* itself may represent an attractive target for therapeutic approaches in psychiatric disorders.

Molecular Psychiatry (2013) **18**, 898–908; doi:10.1038/mp.2013.38; published online 16 April 2013

Keywords: *DISC1*; *ATF4*; *PDE4D*; dopamine; PKA

INTRODUCTION

After the initial report on Disrupted-In-Schizophrenia 1 (*DISC1*) in a large Scottish pedigree,¹ the significance of this gene has been extensively studied in human genetics and neurobiology.^{2,3} Although the involvement of this gene in any specific psychiatric illness categorized by current diagnostic manuals has been debated,⁴ *DISC1* mediates many aspects of neurodevelopment and cellular signaling relevant to neuropsychiatric disorders.

Studies utilizing various mouse models have implicated *DISC1* as an important regulator of brain development with roles in neurogenesis,^{5,6} progenitor proliferation^{5,7} and changes in dendritic arborization, migration as well as the integration of cortical and hippocampal neurons.^{8–13} These functions may be mediated by protein–protein interactions between *DISC1* and its binding partners, which include *NDEL1*,^{14,15} *GSK3β*,⁵ *BBS1/4*,^{12,16} *Girdin*^{13,17} and *Kalirin-7*.¹⁸ Accordingly, animal models with genetic manipulation of *DISC1* display behavioral deficits, including deficits in prepulse inhibition, latent inhibition, spatial and working memory, sociability and increased immobile time in the forced swim test.¹⁹ Furthermore, Niwa *et al.*²⁰ reported that transient deficits in neurodevelopment due to *DISC1* deficits lead to adult behavioral changes after adolescent brain maturation.

In addition to important roles of *DISC1* in neurodevelopment, *DISC1* has a crucial function in neuronal signaling. Millar and co-workers^{21–25} reported intriguing evidence that *DISC1* binds

with several isoforms of a cyclic adenosine monophosphate (cAMP)-specific, rolipram-sensitive family of phosphodiesterases, referred to as *phosphodiesterase 4D* (*PDE4s*), and that it regulates the enzymatic activity of these proteins via direct protein–protein interaction. There are four *PDE4* genes that constitute this family of phosphodiesterases. Each of these four genes encodes an isoform, and each isoform has a number of variants, each distinguished by their unique N-terminal regions. These N-terminal regions confer unique functional roles to each *PDE4* variant by targeting interaction to specific protein complexes to influence local cAMP levels in spatially constrained signaling processes.^{26,27} *PDE4s* break down cAMP, thereby terminating classical $G\alpha_s$ -protein-coupled receptor signaling ($G\alpha_s$ Sig), a well-studied pathway downstream of the neurotransmitter dopamine, which is heavily implicated in psychiatric disorders. Amphetamine administration, which increases dopamine levels, is used as a pharmacological model for schizophrenia in model animals. First-generation antipsychotics are known to target the dopamine D2 receptor, which is known to antagonize $G\alpha_s$ Sig. Mice with *PDE4D* loss-of-function exhibit an antidepressive phenotype, that is, decreased immobility time in the forced swim test^{28–30} and increased neurogenesis,³⁰ phenotypes opposite to those observed in *DISC1* mutant mice.^{31,32} *PDE4* inhibition also enhances dopaminergic signaling downstream of dopamine D1 receptor,³³ which potentially explains the observation that *DISC1* mutant mice have an altered response to methamphetamine.³⁴

¹Department of Brain and Cognitive Sciences, Picower Institute for Learning and Memory, Massachusetts Institute of Technology, Cambridge, MA, USA; ²Howard Hughes Medical Institute, Cambridge, MA, USA; ³Stanley Center for Psychiatric Research, Broad Institute, Cambridge, MA, USA; ⁴Daniel Tosteson Medical Education Center, Boston, MA, USA; ⁵Department of Psychiatry and Behavioral Sciences, Johns Hopkins University School of Medicine, Baltimore, MD, USA and ⁶Division of Molecular and Life Science, Department of Life Science, Biotechnology Research Center, Pohang University of Science and Technology, Pohang, Korea. Correspondence: Dr L-H Tsai, Howard Hughes Medical Institute, 77 Massachusetts Avenue, Room 46-4235, Cambridge, MA 02139, USA.

E-mail: lhtsai@mit.edu

Received 20 August 2012; revised 12 January 2013; accepted 31 January 2013; published online 16 April 2013

The involvement of DISC1 in gene transcription was initially suggested by its association with activating transcription factors 4 and 5 (ATF4 and ATF5), basic-region-leucine zipper domain-containing transcription factors of the CREB/ATF family.³⁵ This finding has been substantiated by further mechanistic studies showing that DISC1 represses ATF4-mediated gene transcription.^{36,37} ATF4 (also known as CREB2) regulates many biological processes, from hematopoiesis and osteoblast differentiation to neuronal progenitor proliferation, synaptic plasticity, learning and memory, and behavior.³⁸ Of particular interest is the regulation of ATF4 by dopamine stimulation. Specifically, ATF4 levels increase in response to dopaminergic stimulation.³⁹ However, very little is known about the effects of DISC1 dysfunction on the transcriptional targets of ATF4 in the brain.

In this study, we investigated the role of ATF4 and DISC1 in transcriptional repression and how this functional interaction impacts dopaminergic signaling. We find that ATF4 and DISC1 act together in a transcriptional repressor complex to regulate specifically the transcription of *PDE4D9*, 1 of 11 known *PDE4D* variants.⁴⁰ *PDE4D9* is a long variant of *PDE4D* that is phosphorylated and regulated by protein kinase A (PKA) and MAPKAPK2,^{40,41} for further details refer to Lynex *et al.*⁴² We further demonstrate that this repressor activity is decreased by dopamine via $G\alpha_s$ signaling, which activates PKA and promotes the phosphorylation of DISC1 at S58. Our findings illustrate that the DISC1–ATF4 interaction regulates a transcriptional feedback loop that responds to, and modulates, dopaminergic neurotransmission and provide mechanistic insights into how the perturbation of this complex may lead to aberrant signaling that may manifest as symptomatology associated with various psychiatric illnesses.

MATERIALS AND METHODS

Mice

C57/Bl6J (C57) mice were obtained from The Jackson Laboratory (Bar Harbor, ME, USA). Pregnant Swiss-Webster (SW) mice were obtained from Taconic (Hudson, NY, USA) after confirming that the colony did not contain the 25 bp deletion within DISC1 found in some SW lines.⁴³ ATF4 mice have been described previously.⁴⁴ All mice were kept in a reverse-light cycle and food and water was provided *ad libitum*. All procedures were performed in accordance with the CAC of MIT.

Generation of antibodies and plasmids

A table of antibodies and plasmids used in this study that have been previously described is provided as Supplementary Material Tables 1 and 2.

Polyclonal antibodies were raised against a peptide identical to the unique region of *PDE4D9* (*PDE4D9unq*), amino-acid sequence (MSIIMKPRSRSTSSLRTEAVC) and the N-terminal 220 amino acids of DISC1 as described previously.⁴⁴ Sera obtained (Covance, Princeton, NJ, USA) were then subjected to affinity column purification to obtain purified antibodies (Thermo Scientific Pierce, Rockford, IL, USA).

The 6-His-DISC1 N-terminal construct was generated by cloning the N-terminal portion of mouse DISC1, amino acids 1–220, into the pET-32b⁺ vector. Generation of GFP-mDISC1 and 3 × FLAG-mDISC1 has been described previously.⁵ Briefly, the full-length human DISC1 transcript was isolated from cDNA, and then subcloned into the pEGFP-C1 vector (Clontech, Takara, Mountain View, CA, USA). Glutathione S-transferase (GST)-ATF4 has been described previously.⁴⁴ Mutations of DISC1 were introduced by polymerase chain reaction (PCR)-based mutagenesis.⁴⁵ 3 × Myc *PDE4D1*, 2, 3, 4, 5, 6, 7, 8, 9, 10, and 11 cDNA were generated by PCR amplification from a mouse brain cDNA library generated from whole-brain RNA extraction and cDNA synthesis, as described below, using 5′ primers flanked by a Kozak (GCCACCATG) sequence and 3′ primers flanked by a *XhoI* restriction site. *PDE4D* primer sequences were adapted from sequences used in a previous study⁴⁶ to account for mouse sequences. The 3 × Myc *PDE4D2*–11 cDNAs were cloned into the *EcoRV* and *XhoI* sites of a pcDNA(3.1)⁺ vector modified to add three Myc tags at the C-terminal end.

Production of pLentilox3.7 ATF4 shRNA

ATF4 and DISC1 short hairpin RNA (shRNA) were cloned into the pLentilox 3.7 vector (Addgene, Cambridge, MA, USA; plasmid 11795) as described previously.⁵ Briefly, complementary 5′ phosphorylated oligonucleotides encoding anti-ATF4, DISC1 and *PDE4D9* shRNA (sequences provided in Supplementary Material Table 4) were annealed, digested with *XhoI* and ligated into the pLentilox 3.7 vector that had been digested with *HpaI* and *XhoI*. Proper insertion and orientation of the sequence downstream of the U6 promoter was confirmed using the sequencing primer 5′-CAGTGCA GGGGAAAGAATAGTAGAC-3′. To create DISC1 shRNA and scr-shRNA mCherry, the GFP cDNA sequence contained within pLentilox3.7 was excised and replaced with the mCherry cDNA sequence, obtained by amplification using pCS2⁺-mCherry (Addgene; plasmid 31165).

Chromatin immunoprecipitation

Chromatin immunoprecipitations (ChIPs) were carried out from hippocampal or cortical tissue from adult (12-week-old) C57/B6J, or ATF4^{+/+}, ATF4^{+/-} and ATF4^{-/-} mice in a C57/B6J background, homogenized by loose dounce, according to the manufacturer's protocol for the EZ-MagnaChIP kit (Millipore, Temecula, CA, USA). A measure of 1 μl of eluted purified DNA was used for each analysis condition.

Amphetamine treatment

Animals were injected intraperitoneally with 0.35 mg kg⁻¹ D-amphetamine sulfate (Tocris Bioscience, Bristol, UK) resuspended in 0.9% saline at 70 ng μl⁻¹, or with saline, and then placed in a novel cage for 2 or 4 h for observation.

Primary neuronal cultures

Dorsal hippocampal cultures were prepared from embryonic E15–16 SW mice as described previously.⁴⁷ Experiments were performed on 10–17 days *in vitro* (DIV) primary cultures. Dissociated rat cortical cultures were prepared as described previously.¹⁸

Production and titration of virus

Lentiviral particles were made as described previously.⁵ Briefly, pMD.2G and pCMVdeltaR8.2 (Addgene; plasmids 12259 and 12263) and pLentilox3.7 constructs described previously were transfected into 90% confluent HEK-293T cells at a ratio of 18:6:5 μg per 10 cm dish. The media were replaced 4 h after transfection and they were collected 48 and 72 h after transfection. Viral supernatant was filtered through a 0.45-μm cellular acetate vacuum filter (Corning Incorporated, Corning, NY, USA; product 431155), and concentrated by ultracentrifugation at 25 000g for 90 min. Viral pellets were resuspended in Dulbecco's phosphate-buffered saline + 0.1% glucose and stored at –80 °C.

Viral titers were determined on HEK-293T cells plated at 2 × 10⁵ cells per well in six-well plates, and serial dilutions of 1:200, 1:2000 and 1:20 000 were used to determine viral titer. After 48 h of viral supernatant application, percentage of infected cells were determined by determining the percentage of fluorescent cells/total no. of cells by visual inspection. Four fields of view were counted per well, and three wells were inspected per dilution. Stereotactic injection into the dentate gyrus was performed with viral titer 2 × 10⁹ transducing units per ml.

mRNA isolation and analysis

RNA was isolated using the RNeasy plus mini kit (Qiagen, Valencia, CA, USA). Briefly, the RLT plus buffer, supplemented with 10 μl ml⁻¹ β-mercaptoethanol, was added to cells or isolated brain tissue, and the lysate was homogenized using a 28 G needle and syringe before proceeding according to the manufacturer's protocol. RNA integrity was evaluated by spectroscopic analysis using the Nanodrop 2000 (Thermo Scientific).

cDNA synthesis, semiquantitative PCR and quantitative PCR

Equivalent amounts of RNA (0.8–1.2 μg) were used for cDNA synthesis using First-strand cDNA synthesis kit (Invitrogen, Carlsbad, CA, USA) according to the manufacturer's instructions. Semiquantitative PCR was conducted using the primers described at optimized annealing temperatures using the Quickload 2 × PCR Mastermix (New England Biolabs, Ipswich, MA, USA). Reactions were terminated at 25 cycles for glycerol-aldehyde 3-phosphate dehydrogenase, and multiple cycles were used for

other primers. The cycle with the biggest difference between conditions was used for data analysis; this was typically between 25 and 32 cycles.

Quantitative PCR was conducted using the primers described at optimized annealing temperatures. Briefly, 1 μ l cDNA was used for each reaction together with the SsoFast Evagreen Supermix (Bio-Rad, Hercules, CA, USA) according to the manufacturer's directions. The quantitative PCR optical reaction was conducted in a T100 thermal cycler fitted with a CFX96 Touch real-time PCR system (Bio-Rad). All experiments were conducted with triplicate samples for each cDNA sample per primer pair. All experimental primer sets, as well as loading controls, were loaded onto the same 96-well plate and normalization was conducted within each plate before statistical analysis. Determination of relative *PDE4D9* levels was conducted using previously optimized primers.^{46,48,49}

Luciferase activity assay

CAD or N2A cells were plated at a density of 2.5×10^5 cells per ml in 24-well plates one day before transfection with a plasmid expressing Renilla luciferase under the control of a human thymidine kinase 1 promoter (pRL-TK; Promega, Madison, WI, USA), and Firefly luciferase within the pgl3 backbone under the control of numerous promoters and enhancers, as described below, at a ratio of 1:10. For assays comparing ATF4 and DISC1 knockdown, cells were also transduced 2 h after transfection, with lentivirus (multiplicity of infection = 5) -expressing shRNA driven by a mouse U6 promoter. Assays were conducted 2 days after transfection/viral transduction using the dual-luciferase reporter assay kit (Promega) and luminescence was detected using the Spectramax-L luminescence microplate reader (Molecular Devices, Sunnyvale, CA, USA), and analyzed as described previously.⁷

Immunoblot analysis

Unless otherwise indicated, at the end of the indicated treatments, cells were lysed in RIPA buffer (50 mM Tris, pH 8.0, 150 mM NaCl, 1% NP40, 0.5% sodium deoxycholate, 0.1% sodium dodecyl sulfate (SDS)) containing protease and phosphatase inhibitors, and boiled after dilution in SDS sample buffer (2% SDS, 0.6 M dithiothreitol, 62.5 mM Tris (pH 6.8), 10% glycerol, 0.0025% bromophenol blue). Equal amounts of proteins were subjected to SDS-polyacrylamide gel electrophoresis and western blot analysis using the indicated antibodies at the concentrations included in Supplementary Table 3. For protein extraction from whole tissue, the forebrain or hippocampus was dissected and dounce homogenized in RIPA buffer. Lysates were spun at 13 000 r.p.m. for 15 min, after which supernatants were removed and analyzed for protein concentration (Bio-Rad Protein Assay, Hercules, CA, USA). SDS buffer was added to equal amounts of protein and immunoblot analysis was performed using 25–200 μ g of protein per well using the 1.5 mm gel thickness Mini-Protein Tetra (Bio-Rad).

Co-immunoprecipitation

HEK293T or HeLa cells were transfected with various constructs using Lipofectamine 2000 (Invitrogen). At 24 h after transfection, cells were lysed with IP buffer (0.4% Triton X-100, 200 mM NaCl, 50 mM Tris 7.5), RIPA buffer or hypotonic buffer (0.2% NP40, 5% glycerol, 0.5 mM MgCl₂, 50 mM NaCl, 50 mM Tris 7.5) containing protease and phosphatase inhibitors. Equal amounts of lysates were incubated with antibody-conjugated beads (Sigma, Santa Cruz Biotechnology, Dallas, TX, USA) in IP buffer overnight at 4 °C, and then washed three times in IP buffer.

Immunoprecipitations were performed using equal amounts of protein and by rocking the lysates with the 1 μ g of the indicated antibodies in IP buffer overnight at 4 °C, or by incubation with the indicated antibodies overnight at 4 °C, followed by incubation with Protein A and Protein G agarose beads for 1 h, and then washed three times in IP buffer, RIPA buffer or hypotonic buffer before eluting in SDS buffer.

In vitro kinase-IP assay of GST-ATF4 and GFP-mDISC1

GST-ATF4⁴⁴ protein (0.5 μ g) was re-suspended in 250 μ l PKA kinase reaction buffer (New England Biolabs) supplemented with 200 μ M ATP. HEK293T cells were transfected with GFP-mDISC1T1⁵ and lysed 24 h after transfection in IP buffer (0.4% Triton X-100, 200 mM NaCl, 50 mM Tris (pH 7.5)) with phosphatase and protease inhibitors. Following centrifugation to remove cellular debris, GFP-DISC1mT1 was isolated by affinity purification using 50 μ g of mouse (B2) anti-GFP-agarose beads (Santa Cruz Biotechnology, Santa Cruz, CA, USA) for 1 h at room temperature. The

beads were washed four times with IP buffer, and then two times with PBS; for the last wash, the beads were re-suspended in 5 ml PBS with protease inhibitor, and 1.2 ml of the resuspended PBS beads was aliquoted into each of four Eppendorf tubes. The PBS was removed from the GFP-agarose beads and 50 μ l of the GST-ATF4 in PKA kinase buffer (50 mM Tris-HCl, 10 mM MgCl₂, 200 μ M ATP (pH 7.5)) was added to each reaction condition. In all, 2500 U of PKA, 2500 U of calf intestinal alkaline phosphatase or 0.5 μ g bovine serum albumin was added into the reaction mixture and allowed to incubate at room temperature for 7 min before washing five times with IP buffer. For the GFP-only input, the beads were washed following the addition of bovine serum albumin in PKA kinase reaction buffer without GST-ATF4. Input (2%) is shown for GST-ATF4.

Immunocytochemistry of primary neurons and HeLa cells

Immunolabeling of primary neurons and HeLa cells was performed as described previously.^{12,36} When used, okadaic acid (0.5 μ M; EMD Millipore, Billerica, MA, USA) was added 2 h before cells were fixed. The percentage of DISC1-positive cells was quantified by dividing the number of cells showing nuclear DISC1 immunoreactivity by the number of 4',6-diamidino-2-phenylindole-labeled cells.

Data analysis

All data were analyzed using the Prism software using statistical tests indicated (GraphPad Software, La Jolla, CA, USA).

RESULTS

DISC1 binds to the *PDE4D* gene locus in an ATF4-dependent manner

We identified an ATF4 binding site within the genomic locus encoding the *PDE4D* gene in the course of an unbiased ChIP screen that was conducted to identify ATF4 genomic target loci *in vivo* in the developing brain (manuscript in preparation). Binding to the locus on *PDE4D*, along with several other identified loci, was confirmed by ChIP-PCR (Supplementary Figure 1). Given that DISC1 regulates ATF4 transcriptional activity *in vitro*³⁶ and lacks a DNA-binding domain, we hypothesized that DISC1 associated with the *PDE4D* gene locus in an ATF4-dependent manner.

To test this hypothesis, we conducted ChIP-PCR using a polyclonal DISC1 antibody that recognizes the N terminus of DISC1 with dorsal hippocampal samples from 8-week-old wild-type (ATF4^{+/+}), ATF4 heterozygous (ATF4^{+/-}) and ATF4 knockout (ATF4^{-/-}) littermate mice. We observed that the association of DISC1 to the *PDE4D* locus was nearly absent in ATF4^{-/-} mice, and severely disrupted in the ATF4^{+/-} littermates (Figure 1a). These data indicate that the association of DISC1 to the *PDE4D* locus requires the presence of ATF4.

Given that the *PDE4D* and DISC1 proteins have been shown to interact directly,^{22,23,25} we felt that *PDE4D* was an interesting ATF4 target. Our ChIP data indicate that ATF4 binds to a region of the *PDE4D* locus that is 5' to the common catalytic domain, and downstream of some, but not all, of the unique *PDE4D* variant exons.^{26,42} The location of the ATF4 and DISC1 binding site on the *PDE4D* locus led us to hypothesize that ATF4 and DISC1 regulate the transcription of some, but not all, *PDE4D* variants.

To characterize the regulation of the various *PDE4D* transcripts by ATF4 and DISC1, we used shRNA to knock down these proteins while measuring the mRNA levels of *PDE4D* variants using semiquantitative PCR. DIV 14 cultured hippocampal neurons were transduced at DIV 4 with lentivirus carrying control scrambled (Scr), ATF4 or DISC1 shRNA-expressing lentivirus.⁵ Using semiquantitative reverse transcription-PCR,^{48,50} an approach used in the past to detect changes in differential expression of the unique variants, we observed a marked increase specifically in the levels of the *PDE4D9* transcript upon both ATF4 and DISC1 shRNA-mediated knockdown (Figure 1b). This increase in *PDE4D9* mRNA was confirmed with *in situ* hybridization in wild-type and ATF4^{-/-} mice. Using an antisense probe targeting the unique N terminus of *PDE4D9* on E15 brain sections, we observed a

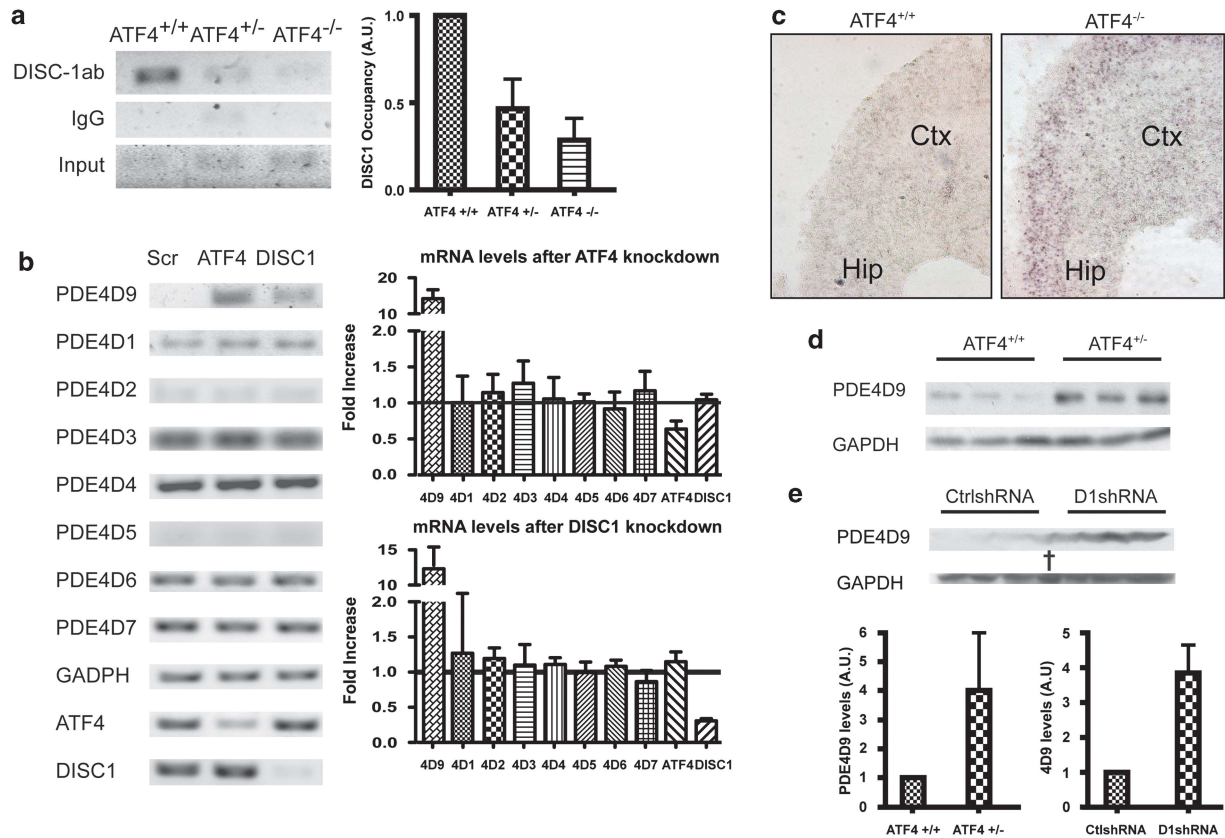


Figure 1. Disrupted-In-Schizophrenia 1 (DISC1) binds to activating transcription factor 4 (ATF4) binding site within PDE4D region to regulate PDE4D9 expression. **(a)** DISC1 binding to region within *PDE4D* gene is ATF4 dependent. DISC1 N-terminal antibody chromatin immunoprecipitation (ChIP) was followed by amplification of purified DNA ($n = 3$, one-way analysis of variance (ANOVA) $P < 0.05$, *Dunnett's test $P < 0.05$ relative to ATF4^{+/+}). **(b)** Infection of dorsohippocampal neurons with lentivirus-expressing ATF4 or DISC1 short hairpin RNA (shRNA) results in the specific increase of PDE4D9 transcripts. Semiquantitative reverse transcriptase-polymerase chain reaction (sqRT-PCR) of RNA obtained at days *in vitro* (DIV) 14 ($n = 4$, one-sample ANOVA, $*P < 0.05$). **(c)** *In situ* hybridization of E15 wild-type (WT) or ATF4^{-/-} with antisense oligonucleotide to unique region of PDE4D9 demonstrates elevated levels of PDE4D9 in the absence of ATF4. **(d)** PDE4D9 protein levels are elevated in 12-week-old ATF4^{+/-} mice compared with WT mice. **(e)** PDE4D9 protein levels are elevated in 12-week-old C57/B6 mice hippocampus injected with DISC1 shRNA compared with control (Ctrl) shRNA-injected mice. Immunoprecipitation followed by immunoblot (IP-western) of hippocampal lysates ($n = 3$, two-tailed t -test $*P < 0.05$, †overloaded DISC-1 shRNA lane, disregard). A.U., arbitrary unit; GAPDH, glyceraldehyde 3-phosphate dehydrogenase; IgG, immunoglobulin G; Scr, scrambled.

substantial increase in *PDE4D9* transcripts in ATF4^{-/-} compared with wild-type embryonic brains (Figure 1c).

Consistent with the observed increases in *PDE4D9* mRNA, PDE4D9 protein levels were also significantly increased in dorsal hippocampal brain lysates from 8-week-old ATF4^{+/-} mice compared with wild-type (ATF4^{+/+}) littermates (Figure 1d). We stereotactically injected lentivirus-expressing DISC1 shRNA into the 8-week-old mouse hippocampus, and observed that PDE4D9 protein levels were significantly higher following this *in vivo* shRNA-mediated DISC1 knockdown compared with control shRNA (Figure 1e). Collectively, these results indicate that the loss of ATF4 or DISC1 expression specifically increases PDE4D9 mRNA. These findings are consistent with the notion that ATF4 and DISC1 function in a transcriptional repressor complex at the *PDE4D* gene locus to repress specifically transcription of the PDE4D9 isoform. Collectively, these results suggest that ATF4 is necessary for the recruitment of DISC1 to the *PDE4D* gene locus, and that these two factors together regulate the expression of the PDE4D9 variant.

ATF4 and DISC1 bind the regulatory region of PDE4D9 and suppress its transcription

PDE4 promoters do not have TATA boxes and other features that help in its identification. To determine whether the increase in PDE4D9 mRNA and protein that follows DISC1/ATF4 knockdown

results from increased transcriptional activity, we tested the effects of ATF4 and DISC1 knockdown in luciferase-based reporter assays using putative PDE4D promoter and enhancer regions, an approach used successfully to identify promoter regions from other PDE4 isoforms.⁵¹ We cloned the 1000 bp upstream of the PDE4D9 coding region and placed this putative promoter region upstream of the luciferase cDNA in the pGL3 vector (Figures 2a and b). Compared with the baseline luciferase expression from pGL3 alone, which lacks a promoter, we observed significant luciferase activity in the presence of the 1000 bp fragment (4D9pro-Luc; Figure 2b), suggesting that this region of the *PDE4D* locus likely contains the PDE4D9 promoter. Next, we assayed whether the presence of the ATF/DISC1 binding site of the *PDE4D* locus affects the transcriptional activity of the putative PDE4D9 promoter. The ATF4/DISC1 binding site (~450 bp) was divided into four fragments (EnhA–D), each of which was placed immediately upstream of the putative *PDE4D9* promoter. The presence of fragments EnhA, EnhB and EnhC did not significantly affect PDE4D9 promoter-driven luciferase activity. However, fragment EnhD markedly increased the activity of the putative PDE4D9 promoter (Figures 2a and b), marking it as a potential enhancer region in the *PDE4D9* locus.

Upon close examination of the sequence of EnhD, we identified the sequence GGGTGCAAT, which has homology to known non-palindromic ATF4:C/EBP binding motifs, consistent with our

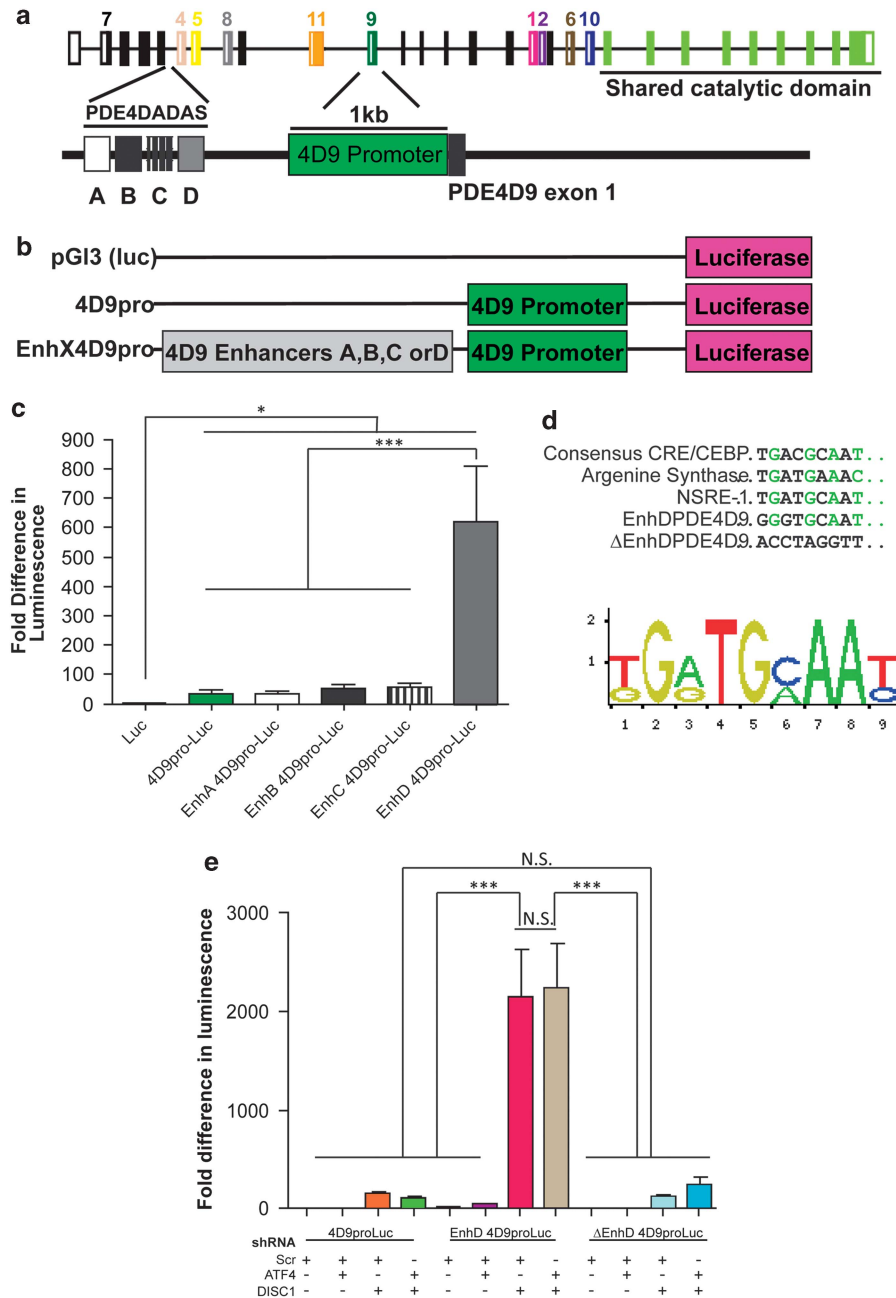


Figure 2. The activating transcription factor 4–Disrupted-In-Schizophrenia 1 (ATF4–DISC1) binding region acts as a transcriptional repressor to endogenous PDE4D9 promoter. **(a)** Schematic of PDE4D genetic loci. **(b)** Schematic of constructs used to study the transcriptional effects of the ATF4–DISC1 binding region. **(c)** Placement of the 1000 bp region immediately upstream of PDE4D9 coding region in front of the luciferase (*Luc*) gene upregulates luciferase activity, indicating that this region acts as a promoter. Fragment D significantly altered luciferase activity relative to the others ($n = 5$, analysis of variance (ANOVA) $P < 0.0001$, *Dunnett's test $P < 0.05$ for comparison of *Luc* to all others, ***Tukey's test $P < 0.001$ for EnhDPDE4D9 compared with other fragments, PDE4D9 promoter only). **(d)** A putative CRE/CEBP binding site was identified within enhancer fragment D (EnhD). The site was mutated to eliminate sequence similarity to CRE/CEBP binding site. **(e)** Comparison of the effects of control, ATF4 or DISC1 short hairpin RNA (shRNA) combinations on luciferase activity on EnhDPDE4D9. The presence of EnhD upstream of the 4D9 promoter is critical for the dramatic elevation in signal seen after ATF4, DISC1 shRNA expression ($n = 5$, ANOVA $P < 0.0001$, ***Tukey's test $P < 0.001$ for comparisons between EnhDPDE4D9 DISC1 shRNA and DISC1/ATF4 shRNA compared with all others). NS, nonsignificant; Scr, scrambled.

findings that it may represent an ATF4 binding region (Figure 2c).^{52–54} To test whether this sequence is responsible for the transcription-enhancing ability of fragment EnhD, we repeated the luciferase promoter assays using a mutated and wild-type EnhD fragment in the presence of shRNA targeting ATF4, DISC1 or both. The knockdown of ATF4 and DISC1 had no significant effect

on the luciferase activity of the 4D9proLuc vector, which expresses the putative PDE4D9 promoter alone, compared with control shRNA. However, in the presence of the EnhD fragment in the 4D9proLuc vector, the knockdown of DISC1 led to an increase in luciferase activity in transfected cells. This increase was also observed in cells transfected with both ATF4 and DISC1 shRNA,

but not in cells expressing shRNA against ATF4 alone. When the putative ATF4 binding region was mutated in the EnhD fragment (mutEnhD 4D9proLuc), none of the shRNAs significantly affected the luciferase activity (Figure 2d), indicating a loss of enhancer-like activity. Taken together, these results indicate that the ATF4/DISC1 binding site acts as an enhancer region to regulate *PDE4D9* transcription, and that the binding of the DISC1 protein, via ATF4, to this region acts to repress *PDE4D9* promoter activity. The fact that ATF4 knockdown alone does not significantly affect luciferase expression suggests that the requirement for ATF4 binding may not be captured in this construct. For example, in the genome, ATF4 binding may serve the purpose of bringing the enhancer region in close proximity with the promoter, a position that is recreated in our luciferase construct.

Signaling via the dopamine D1 receptor modulates the expression of PDE4D9

As mentioned previously, PDE4s act to terminate $G\alpha_s$ -protein-coupled receptor signaling ($G\alpha_s$ Sig) downstream of dopamine D1 receptor activation, and the loss of PDE4D expression in mice has an antidepressant effect,²⁸ while overactivation of the D1 receptor via amphetamine administration models aspects of schizophrenia in animals.⁵⁵ Thus, alterations in the levels of the PDE4D9 variant may play an important role in neuronal dopaminergic signaling pathways. To address whether the regulation of PDE4D9 by ATF4/DISC1 is influenced by extracellular signaling, such as neurotransmitters, we treated cultured hippocampal neurons with potassium chloride (KCl, 55 mM), which induces generalized depolarization, baclofen (100 μ M), which activates the GABA_B receptor, or prostaglandin E2 (10 mM), which binds the prostaglandin E2 receptor and reportedly increases phosphodiesterase activity in other systems.⁵⁶ Interestingly, none of these agents influenced PDE4D9 levels in DIV 14 cultured hippocampal neurons (Figure 3a and Supplementary Figure 3). However, dopamine (100 μ M) as well as isoproterenol (100 μ M), a β -adrenergic receptor agonist, significantly increased the level of PDE4D9 mRNA (Figure 3a). We also observed an increase in PDE4D1, 2 and 5, with dopamine and isoproterenol treatment, consistent with past work demonstrating that elevated cAMP levels increase these transcripts.^{57, 58} This suggests that agonists of D1-type dopamine receptors, β -adrenergic receptors or $G\alpha_s$ -coupled, GPCR stimulation increase *PDE4D9* transcription.

We then tested the effects of dopaminergic signaling on PDE4D9 mRNA levels by using quantitative PCR in DIV 14 primary hippocampal neurons treated with vehicle, dopamine (10 μ M), the D1-type receptor agonist SKF81297 (6-chloro-7,8-dihydroxy-1-phenyl-2,3,4,5-tetrahydro-[1H]-3-benzazepine) (3 μ M) and the D2-type receptor agonist quinpirole (10 μ M). We found that treatment with dopamine and SKF81297, but not quinpirole, increased PDE4D9 mRNA levels, indicating that activation specifically of the dopamine D1-type receptor increases *PDE4D9* transcription in neurons (Figure 3b). Furthermore, acute amphetamine treatment, which increases both noradrenergic and dopaminergic signaling, at a dose shown to induce hyperactivity (0.35 mg kg⁻¹) in 8-week-old wild-type mice increased both mRNA and protein levels of PDE4D9 in the hippocampus (Figures 3c and d). Taken together, these results indicate that *PDE4D9* transcription is regulated by dopamine via D1-type receptor signaling, and that neuropharmacologically relevant doses of amphetamine increase *PDE4D9* transcription in behaving animals.

Dopamine and amphetamine regulate the association of DISC1 with the PDE4D9 enhancer region

To examine the role of DISC1 and ATF4 in the regulation of PDE4D9 by D1-coupled signaling, we performed ChIP in hippocampal tissue from mice treated acutely either with amphetamine

(0.35 mg kg⁻¹) or saline. DISC1 occupancy of the putative PDE4D9 enhancer region was significantly lower at both 2 and 4 h following amphetamine administration compared with controls (Figure 4a). Interestingly, we also observed a detectable, but nonsignificant, increase in ATF4 occupancy at this locus with amphetamine treatment (Figure 4a). Taken together, these results demonstrate that DISC1, but not ATF4, dissociates from the PDE4D9 enhancer region upon dopaminergic stimulation of D1-type receptors, thereby de-repressing *PDE4D9* transcription in an activity-dependent manner.

PKA phosphorylation impairs the interaction of DISC1 and ATF4

ATF4 and DISC1 have both been shown to be phosphorylated by PKA.^{12,59} Following phosphorylation by PKA, ATF4 switches from being a repressor to being an activator.⁵⁹ Given the importance of PKA in regulating both ATF4 and DISC1 function, we examined whether PKA phosphorylation affects the DISC1-ATF4 interaction. To this end, full-length GFP-tagged DISC1 and GST-tagged ATF4 proteins were purified and subjected to an *in vitro* binding assay. We found that the interaction of DISC1 with ATF4 was substantially diminished in the presence of the catalytic domain of PKA compared with non-transfected controls, and that the addition of alkaline phosphatase increased the DISC1-ATF4 interaction (Figure 4b). Thus, PKA-mediated phosphorylation of DISC1, ATF4 or both disrupts their interaction.

We then sought to determine how the PKA-mediated phosphorylation of DISC1 impacts its function as a transcriptional repressor. When primary rat neurons were treated with forskolin, a potent PKA activator, the abundance of nuclear DISC1 decreased dramatically compared with the DMSO control (Figure 4c). Taken together, these results demonstrate that PKA activation leads to a change in affinity between DISC1 and ATF4, leading to changes in DISC1 localization and occupancy of DISC1 at the PDE4D9 enhancer region.

The phosphorylation of DISC1 S58 mediates ATF4-DISC1 interaction and DISC1 nuclear localization

Previous work has shown that serine-58 (S58) of DISC1 is phosphorylated by PKA¹² and that this residue is proximal to a nuclear localization signal.³⁶ Thus, we tested whether the PKA-mediated phosphorylation of this residue is responsible for the altered subcellular distribution of DISC1 following PKA activation. HeLa cells were transfected with vectors expressing wild-type or an S58A mutant of DISC1, and treated with okadaic acid, another PKA enhancer. We observed that PKA activation reduced the nuclear distribution of wild-type DISC1, and that this effect was significantly smaller for the S58A mutant, indicating that phosphorylation at this site affects the subcellular distribution of DISC1 (Figure 5a). Indeed, the basal localization of the S58A DISC1 mutant was primarily nuclear, whereas the phosphomimetic mutant, S58E, appeared mainly in the cytosol (Figure 5b). In addition, phosphorylation of S58 appears to regulate the interaction between DISC1 and ATF4, which increases in the presence of S58A, and decreases with S58E, compared with wild-type DISC1 (Figure 5c).

PDE4D9 is a cytosolic protein that colocalizes with, and binds to, DISC1 but not ATF4

Previous studies have demonstrated that DISC1 binds to, and affects, the activity of several PDE4D isoforms.²⁵ These interactions are also regulated by PKA and raises the possibility that PDE4D9 itself may form a complex with DISC1 and ATF4. To address whether this is the case, we conducted immunoprecipitation studies between PDE4D9, DISC1 and ATF4. PDE4D9 interacts with DISC1, and this interaction decreases with dopamine treatment; conversely, we did not observe any interaction between PDE4D9 and ATF4 (Supplementary Figure 4). To address the subcellular

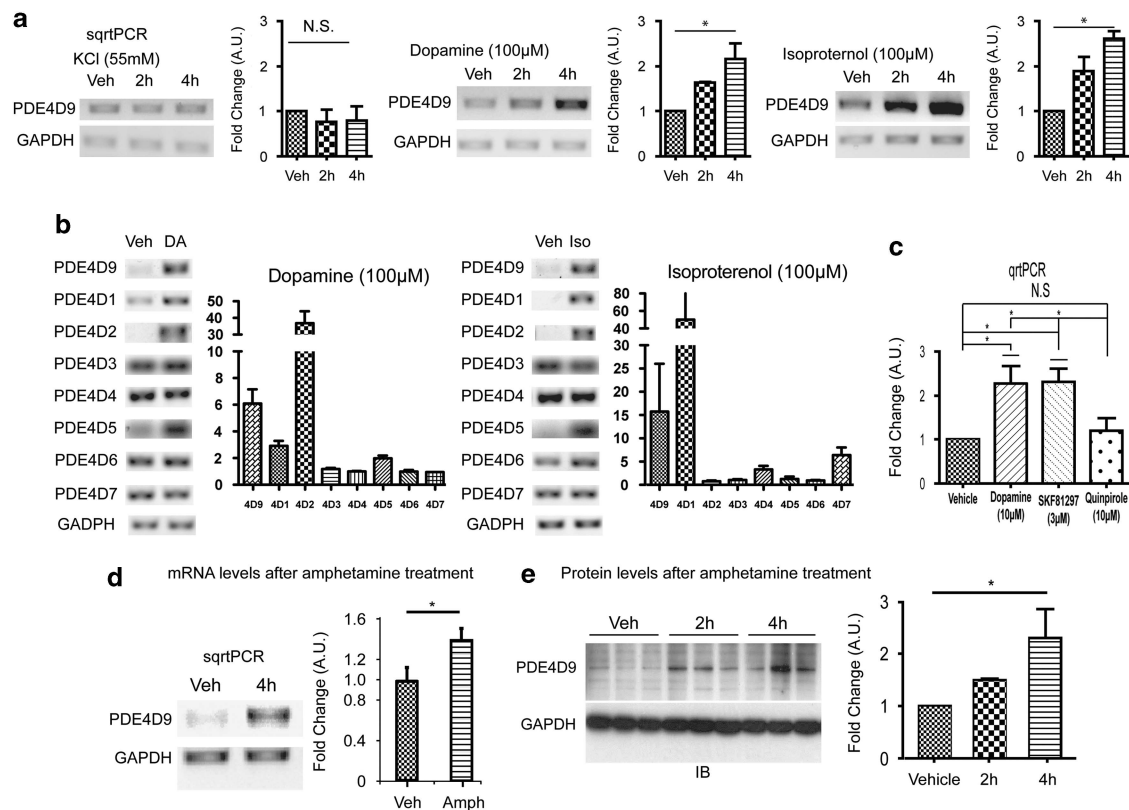


Figure 3. G_5 -coupled G-protein coupled receptor signaling leads to increases in PDE4D9 levels. **(a)** Dopamine (DA) and isoproterenol (Iso) (β -adrenergic receptor agonist), but not KCl (general activator of neuronal activity via depolarization), semiquantitative reverse transcriptase-polymerase chain reaction (sqRT-PCR) of PDE4D9 from RNA treated with vehicle (Veh) or compound at 2 and 4 h ($n=4-6$, analysis of variance (ANOVA) $P<0.05$, *Tukey's test $P<0.05$ compared with vehicle treatment). **(b)** Dopamine and isoproterenol treatment lead to increases in PDE4D1, 2, 5 and 9 but not PDE4D3, 4, 6 and 7 ($n=4-6$ ANOVA $P<0.05$, *Tukey's test $P<0.05$ compared with vehicle treatment). **(c)** D1-type, but not D2-type dopamine receptor agonists, lead to detectable changes in PDE4D9 transcript. Dopamine (10 μM) and SKF81297 (6-chloro-7,8-dihydroxy-1-phenyl-2,3,4,5-tetrahydro-[1H]-3-benzazepine) (3 μM), but not quinpirole (10 μM) treatment, lead to detectable increases in PDE4D9 levels, assayed by quantitative PCR (qPCR) for unique region of PDE4D9 ($n=3$, ANOVA $P<0.05$, * $P<0.05$ Dunnett's test). **(d)** 0.35 mg kg^{-1} amphetamine treatment of C57Bl6/J mice leads to detectable increases in PDE4D9 transcript by sqRT-PCR ($n=4$, *Student's t -test $P<0.05$). **(e)** In all, 0.35 mg kg^{-1} amphetamine treatment leads to detectable increases in PDE4D9 protein levels by immunoprecipitation (IP)-western using PDE4D9 antibody ($n=3$, ANOVA $P<0.05$, *Tukey's test $P<0.05$ for comparison to vehicle levels). A.u., arbitrary unit; GAPDH, glyceraldehyde 3-phosphate dehydrogenase; NS, nonsignificant.

localization of PDE4D9 in relation, C-terminal-myc-tagged PDE4D9 was overexpressed in DIV 10 hippocampal neurons. PDE4D9 is cytosolic, whereas ATF4 is nuclear. DISC1 expression is seen in both the nucleus and the cytoplasm. No gross changes were seen in localization of PDE4D9 with dopamine treatment (Supplementary Figure 4).

DISCUSSION

Since its discovery more than a decade ago, extensive study has revealed multiple roles for DISC1 in neurodevelopment. Many of these roles are implicated in etiologies of neuropsychiatric disorders of neurodevelopmental origin, including neurogenesis, neuronal migration and integration.^{3,8,12,13,15,17,18} In contrast, the main finding of this study was the elucidation of a novel role for DISC1 in intracellular signaling involving dopaminergic neurotransmission. This newly described function of DISC1 may underlie important pathophysiologies of various neuropsychiatric disorders. Given that molecules involved in these physiologies may represent attractive targets for drug discovery, our findings have significance in the translational aspects of clinical medicine. Furthermore, through this study, we also delineate a novel mechanism involving the regulation of PDE4 at two levels,

that is, at the protein level (interaction with DISC1, shown previously^{22,25}) and at the transcriptional level (mediated by DISC1-ATF4, this study).

DISC1 associates with the genomic locus and represses the transcription of an ATF4 transcriptional target

The ATF4 transcription factor contains a basic-leucine-zipper domain and can homodimerize or form heterodimers with many interaction partners including those from the AP-1 and C/EBP family. The ATF4 homo- or heterodimers have different affinities for various DNA binding regions. Previous studies have demonstrated that ATF4 binding of DISC1 is dependent on a leucine-zipper domain contained within DISC1.³⁶ In this paper, we show that the interaction of DISC1 with the *PDE4D* locus is dependent on ATF4; this is consistent with the notion that DISC1 forms a heterodimer with ATF4 to bind to this genomic region, and furthermore that the ATF4/DISC1 heterodimer is repressive to transcription. The role of DISC1's interactions with other transcriptionally relevant partners is not well-characterized, and further studies in this area would add to our understanding of DISC1 function in transcriptional regulation by providing clues as to the composition of the ATF4-DISC1 repressor complex, potentially identifying novel targets for therapeutic intervention.

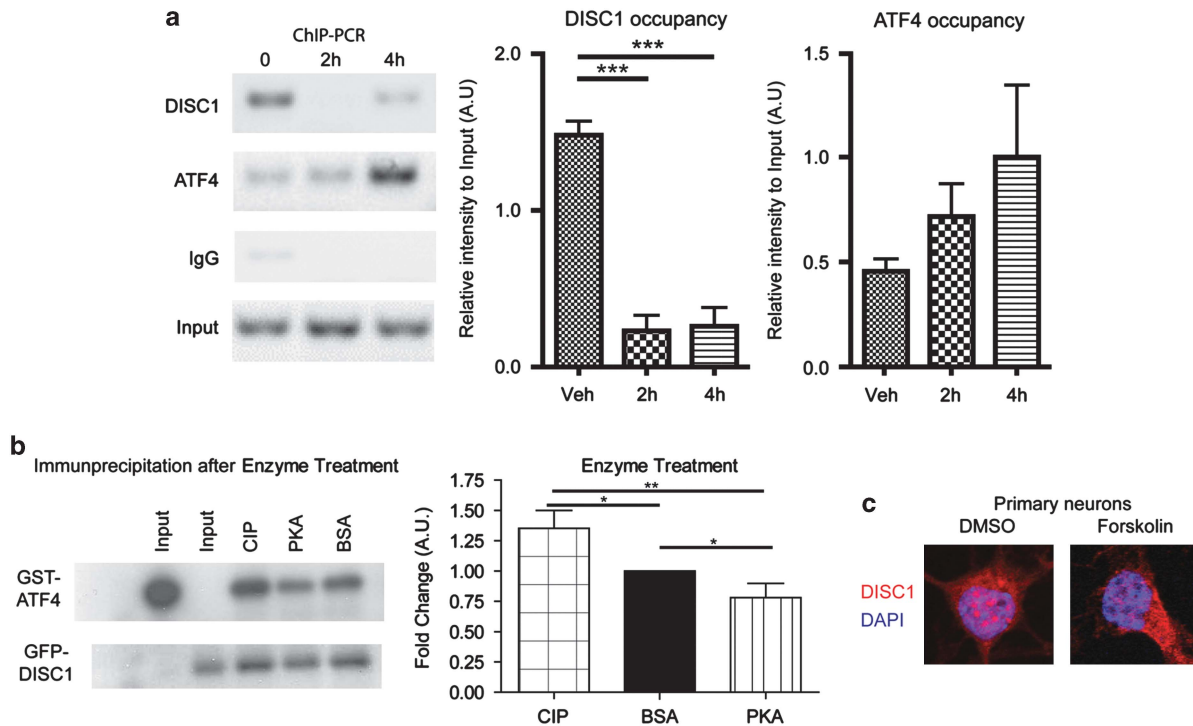


Figure 4. G_s -coupled and downstream effects lead to dissociation of Disrupted-In-Schizophrenia 1 (DISC1) from activating transcription factor 4 (ATF4). **(a)** Chromatin immunoprecipitation (ChIP) using DISC1 and ATF4 antibodies after amphetamine treatment (0.35 mg kg^{-1}) from C57/Bl6J hippocampus reveals that there is loss of DISC1 occupancy at the *PDE4D9* locus compared with vehicle (Veh)-injected mice. Quantification of DISC1 occupancy at *PDE4D9* locus ($n=6$, analysis of variance (ANOVA) $P<0.05$, Dunnett's test $P<0.001$ for comparisons between vehicle injection and 2 and 4 h after amphetamine injection). Quantification of ATF4 occupancy at the *PDE4D9* locus ($n=6$, ANOVA $P=0.13$). **(b)** Purified glutathione *S*-transferase (GST)-tagged ATF4 protein and GFP-DISC1 protein, from overexpression in bacteria and HEK293T cells, respectively, decrease interaction *in vitro* after the addition of the catalytic unit of protein kinase A (PKA). Quantification of **(b)** ($n=4$, ANOVA $P<0.05$, $*P<0.05$, $**P<0.01$ by Newman-Keuls *post hoc* analysis). **(c)** Forskolin treatment ($100 \mu\text{M}$, overnight) decreases nuclear distribution of DISC1 in rat cortical primary neurons. Red, DISC1; blue, 4',6-diamidino-2-phenylindole (DAPI) (nucleus). A.u., arbitrary unit; BSA, bovine serum albumin; CIP, calf intestinal alkaline phosphatase; DMSO, dimethylsulfoxide; IgG, immunoglobulin G.

Dual regulation of PDE4

PDE4s suppress and terminate cAMP signaling in various distinct subcellular compartments by converting cAMP to AMP. Our finding that cAMP signaling alters the interaction profile of ATF4 and DISC1, thereby increasing PDE4D9 expression, adds to the growing body of literature on the regulation of PDE4s by DISC1. Previous studies have shown that DISC1 regulates some, but not all, gene products of the four *PDE4* genes via direct interaction and inhibition in a cAMP activity-dependent manner.^{22,23} Both mechanisms, that is, direct inhibition of activity and transcriptional repression of phosphodiesterases, are regulated by PKA, indicating that these two mechanisms are activated in a feedback mechanism to regulate cAMP signaling in different timeframes, and in specific subcellular regions. The dissociation of PDE4s from DISC1 in response to cAMP signaling reflects an acute feedback, in which increased cAMP signaling induces its own termination signal by releasing PDE4s from sequestration by DISC1. On the other hand, transcriptional induction reflects a longer-term, sustained feedback mechanism, in which increased cAMP signaling increases PDE4D9 levels, leaving the cell poised to shut down cAMP activity. This finding may have therapeutic implications. Further studies exploring the role of PDE4D9 in, for example, amphetamine-induced sleep disturbances, sensitization and withdrawal may be warranted. The recent discovery of differences in DISC1–ATF4 interaction by human DISC1 coding variants³⁷ also indicates that there may be human coding variants of DISC1 that are likely to elicit differential responses to dopaminergic stimulation at the cellular

level, in addition to having baseline differences in DISC1–ATF4 interaction, which may help to explain the observed differences in attention observed in DISC1 coding variants,⁶⁰ as norepinephrine and dopamine^{61,62} are implicated in the coupling of attention-related networks.

The DISC1–ATF4 interaction is physiologically regulated

Dopaminergic signaling, via the D1 receptor, as well as noradrenergic signaling, via the β_1 and β_2 receptors, activate G_{α_s} , leading to the activation of adenylyl cyclase and increased cAMP levels. High concentration of cAMP activates PKA, and the PDE4s terminate this signaling in different subcellular locations by converting cAMP to AMP.⁴⁸ Numerous psychotherapeutic agents impact cAMP levels via secondary actions. The classical antidepressants, monoamine oxidase inhibitors, act by elevating dopamine, serotonin and norepinephrine, while cocaine and amphetamines, abused for their euphoric effects and noted for psychotomimetic actions, act through the excitation of dopaminergic signaling. ATF4-dependent transcription is mediated by several factors, including oxidative/nutrient stress and cAMP-induced PKA activity. Notably, the cocaine-amphetamine response transcript, which is a product of ATF4-mediated transcription, is upregulated in response to cocaine and amphetamine treatment.⁵⁹ Our study provides further clues into the pathophysiology of psychiatric phenotypes secondary to the dysregulation of this pathway. An increase in PDE4D9 levels secondary to the activation of cAMP is a form of transcriptional

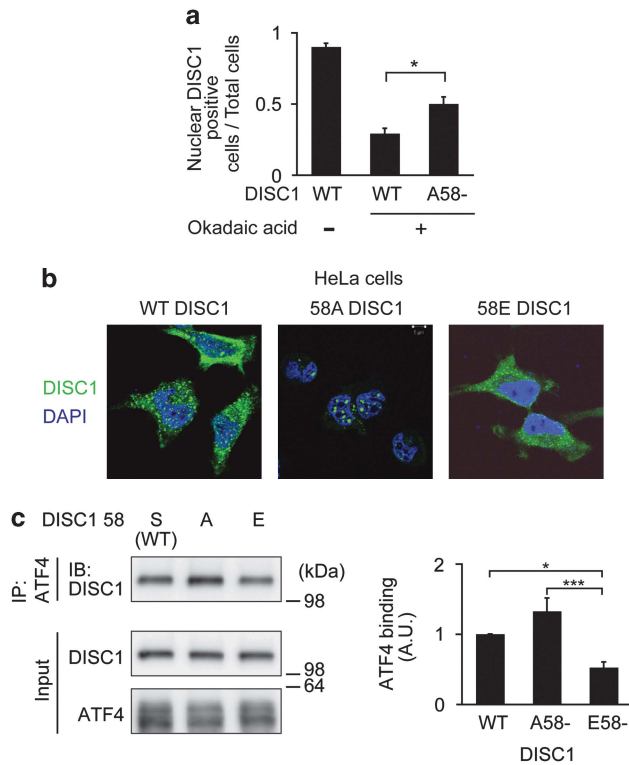


Figure 5. Phosphorylation of Disrupted-In-Schizophrenia 1 (DISC1) at serine-58 (S85) regulates its subcellular distribution and interaction with activating transcription factor 4 (ATF4). **(a)** HeLa cells were transfected with wild-type (WT) or phospho dead mutant A58-DISC1. Treatment with okadaic acid, an enhancer of protein kinase A (PKA), induced significant reduction in nuclear distribution of WT DISC1. This reduction was diminished for A58-DISC1. Data are representative of three independent experiments, analysis of variance (ANOVA) $P < 0.05$, $*P < 0.05$ by conferring *post hoc* analysis. **(b)** Phospho dead mutant A58- and phospho mimic mutant E58-DISC1 showed particular DISC1 intracellular distribution patterns: A58-DISC1, nuclear dominant pattern; E58-DISC1, cytosolic dominant pattern. Green, DISC1; blue, 4',6-diamidino-2-phenylindole (DAPI) (nucleus). **(c)** Increased binding of ATF4 with A58-DISC1 compared with E58-DISC1 in HeLa cells by co-immunoprecipitation (IP). Data are representative of six independent experiments, ANOVA $P < 0.05$, $*P < 0.05$, $***P < 0.001$ by Bonferroni *post hoc* analysis. A.U., arbitrary unit; IB, immunoblotting.

feedback regulation necessary for the proper maintenance of baseline cAMP levels and activity (Supplementary Figure 5). With DISC1 loss-of-function, cells have higher baseline levels of PDE4D9. This baseline increase in a phosphodiesterase would perturb $G_{\alpha_{sig}}$ propagation downstream of dopamine D1 receptors (Supplementary Figure 5). This form of regulation is mechanistically distinct from the cAMP-mediated regulation of other PDE4D variants, namely PDE4D1 and 2, which have been shown to be regulated by CREB.⁵⁷ Thus, this study adds to the literature demonstrating the intricate nature of PDE4D regulation.

Previous findings that PDE4D levels are regulated by both chronic antidepressants and rolipram administration further implicate the cAMP pathway in the regulation of PDE4D transcription.⁶³ Our study provides a biochemical basis for this regulation, by demonstrating that the phosphorylation of DISC1 serine 58 results in a decreased interaction of DISC1 with ATF4 and a resulting change in DISC1 localization to a more extranuclear position.

Our results may also offer interesting insights on therapeutic approaches that target PDE4s in the treatment of psychiatric

disorders. Perturbing levels of PDE4D9, with its unique N-terminal domain, and presumably unique interaction partners, would be predicted to have an outcome that is more specific than that of inhibiting all PDE4 variants, as is the case with rolipram. Indeed, rolipram has an undesirable side-effect profile.^{28,30} Despite the limited studies on PDE4D9, there is evidence for its involvement in G-protein-coupled receptor signaling.⁶⁴ Further studies characterizing the subcellular localization and effect of increasing and decreasing the expression of this specific variant may reveal PDE4D9 as a viable and worthwhile therapeutic target, or reveal novel insights about subcompartments of cAMP signaling important for psychiatric disorder pathophysiology. The perturbation of this pathway may disrupt the ability of neurons to respond appropriately to neurotransmitter signaling, ultimately affecting the neuronal circuitry and resulting in abnormal behavioral responses that may manifest as psychiatric disease.

CONFLICT OF INTEREST

The authors declare no conflict of interest.

ACKNOWLEDGEMENTS

We thank Drs A Bero, F Calderon, M Conti, EJ Kwon, M Lewis, A Mungenast, W Richter and SC Su for critical reading of the manuscript and suggestions. We also acknowledge E Berry, K Dennehy and M Eichler for technical assistance throughout. TS was supported by award Number T32GM07753 from the National Institute of General Medical Sciences and is a Henry E Singleton (1940) Fellow. This work was, in part, supported by Brain Research Center of the 21st Century Frontier Research Program Grant 2012K001115 (to SKP), 2012R1A2A2A01012923 (to SKP) and 2011-0023973 (to YUP), funded by the MEST, Republic of Korea. This work was supported by NIH R01 MH091115 (L-HT), MH-094268 Silvo O Conte center (AS), MH-069853 (AS), NIH MH096208 (KI) and MSCRF-0081-00(KI). L-HT is a Howard Hughes Medical Institute investigator. The content is solely the responsibility of the authors and does not necessarily represent the official views of the National Institute of General Medical Sciences or the National Institutes of Health.

REFERENCES

- Millar JK, Wilson-Annan JC, Anderson S, Christie S, Taylor MS, Semple CA *et al.* Disruption of two novel genes by a translocation co-segregating with schizophrenia. *Hum Mol Genet* 2000; **9**: 1415–1423.
- Porteous DJ, Millar JK, Brandon NJ, Sawa A. DISC1 at 10: connecting psychiatric genetics and neuroscience. *Trends Mol Med* 2011; **17**: 699–706.
- Brandon NJ, Sawa A. Linking neurodevelopmental and synaptic theories of mental illness through DISC1. *Nat Rev Neurosci* 2011; **12**: 707–722.
- Kim Y, Zerwas S, Trace SE, Sullivan PF. Schizophrenia genetics: where next? *Schizophrenia Bull* 2011; **37**: 456–463.
- Mao Y, Ge X, Frank CL, Madison JM, Koehler AN, Doud MK *et al.* Disrupted in schizophrenia 1 regulates neuronal progenitor proliferation via modulation of GSK3beta/beta-catenin signaling. *Cell* 2009; **136**: 1017–1031.
- Kim JY, Liu CY, Zhang F, Duan X, Wen Z, Song J *et al.* Interplay between DISC1 and GABA signaling regulates neurogenesis in mice and risk for schizophrenia. *Cell* 2012; **148**: 1051–1064.
- Singh KK, Ge X, Mao Y, Drane L, Meletis K, Samuels BA *et al.* Dixdc1 is a critical regulator of DISC1 and embryonic cortical development. *Neuron* 2010; **67**: 33–48.
- Duan X, Chang JH, Ge S, Faulkner RL, Kim JY, Kitabatake Y *et al.* Disrupted-in-schizophrenia 1 regulates integration of newly generated neurons in the adult brain. *Cell* 2007; **130**: 1146–1158.
- Faulkner RL, Jang MH, Liu XB, Duan X, Sailor KA, Kim JY *et al.* Development of hippocampal mossy fiber synaptic outputs by new neurons in the adult brain. *Proc Natl Acad Sci USA* 2008; **105**: 14157–14162.
- Taya S, Shinoda T, Tsuboi D, Asaki J, Nagai K, Hikita T *et al.* DISC1 regulates the transport of the NUDEL/LIS1/14-3-3epsilon complex through kinesin-1. *J Neurosci* 2007; **27**: 15–26.
- Namba T, Ming GL, Song H, Waga C, Enomoto A, Kaibuchi K *et al.* NMDA receptor regulates migration of newly generated neurons in the adult hippocampus via disrupted-in-schizophrenia 1 (DISC1). *J Neurochem* 2011; **118**: 34–44.

- 12 Ishizuka K, Kamiya A, Oh EC, Kanki H, Seshadri S, Robinson JF *et al*. DISC1-dependent switch from progenitor proliferation to migration in the developing cortex. *Nature* 2011; **473**: 92–96.
- 13 Kim JY, Duan X, Liu CY, Jang MH, Guo JU, Pow-anpongkul N *et al*. DISC1 regulates new neuron development in the adult brain via modulation of AKT-mTOR signaling through KIAA1212. *Neuron* 2009; **63**: 761–773.
- 14 Kamiya A, Tomoda T, Chang J, Takaki M, Zhan C, Morita M *et al*. DISC1-NDEL1/NUDEL protein interaction, an essential component for neurite outgrowth, is modulated by genetic variations of DISC1. *Hum Mol Genet* 2006; **15**: 3313–3323.
- 15 Kamiya A, Kubo K, Tomoda T, Takaki M, Youn R, Ozeki Y *et al*. A schizophrenia-associated mutation of DISC1 perturbs cerebral cortex development. *Nat Cell Biol* 2005; **7**: 1167–1178.
- 16 Kamiya A, Tan PL, Kubo K, Engelhard C, Ishizuka K, Kubo A *et al*. Recruitment of PCM1 to the centrosome by the cooperative action of DISC1 and BBS4: a candidate for psychiatric illnesses. *Arch Gen Psychiatry* 2008; **65**: 996–1006.
- 17 Enomoto A, Asai N, Namba T, Wang Y, Kato T, Tanaka M *et al*. Roles of disrupted-in-schizophrenia 1-interacting protein girdin in postnatal development of the dentate gyrus. *Neuron* 2009; **63**: 774–787.
- 18 Hayashi-Takagi A, Takaki M, Graziane N, Seshadri S, Murdoch H, Dunlop AJ *et al*. Disrupted-in-schizophrenia 1 (DISC1) regulates spines of the glutamate synapse via Rac1. *Nat Neurosci* 2010; **13**: 327–332.
- 19 Jaaro-Peled H. Gene models of schizophrenia: DISC1 mouse models. *Progr Brain Res* 2009; **179**: 75–86.
- 20 Niwa M, Kamiya A, Murai R, Kubo K, Gruber AJ, Tomita K *et al*. Knockdown of DISC1 by in utero gene transfer disturbs postnatal dopaminergic maturation in the frontal cortex and leads to adult behavioral deficits. *Neuron* 2010; **65**: 480–489.
- 21 Millar JK, Mackie S, Clapcote SJ, Murdoch H, Pickard BS, Christie S *et al*. Disrupted in schizophrenia 1 and phosphodiesterase 4B: towards an understanding of psychiatric illness. *J Physiol* 2007; **584**(Part 2): 401–405.
- 22 Millar JK, Pickard BS, Mackie S, James R, Christie S, Buchanan SR *et al*. DISC1 and PDE4B are interacting genetic factors in schizophrenia that regulate cAMP signaling. *Science* 2005; **310**: 1187–1191.
- 23 Bradshaw NJ, Soares DC, Carlyle BC, Ogawa F, Davidson-Smith H, Christie S *et al*. PKA phosphorylation of NDE1 is DISC1/PDE4 dependent and modulates its interaction with LIS1 and NDEL1. *J Neurosci* 2011; **31**: 9043–9054.
- 24 Carlyle BC, Mackie S, Christie S, Millar JK, Porteous DJ. Co-ordinated action of DISC1, PDE4B and GSK3beta in modulation of cAMP signalling. *Mol Psychiatry* 2011; **16**: 693–694.
- 25 Murdoch H, Mackie S, Collins DM, Hill EV, Bolger GB, Klusmann E *et al*. Isoform-selective susceptibility of DISC1/phosphodiesterase-4 complexes to dissociation by elevated intracellular cAMP levels. *J Neurosci* 2007; **27**: 9513–9524.
- 26 Houslay MD, Baillie GS, Maurice DH. cAMP-specific phosphodiesterase-4 enzymes in the cardiovascular system: a molecular toolbox for generating compartmentalized cAMP signaling. *Circ Res* 2007; **100**: 950–966.
- 27 Houslay MD. Underpinning compartmentalised cAMP signalling through targeted cAMP breakdown. *Trends Biochem Sci* 2010; **35**: 91–100.
- 28 Zhang HT, Huang Y, Jin SL, Frith SA, Suvarna N, Conti M *et al*. Antidepressant-like profile and reduced sensitivity to rolipram in mice deficient in the PDE4D phosphodiesterase enzyme. *Neuropsychopharmacology* 2002; **27**: 587–595.
- 29 Schaefer TL, Braun AA, Amos-Kroohs RM, Williams MT, Ostertag E, Vorhees CV. A new model of Pde4d deficiency: genetic knock-down of PDE4D enzyme in rats produces an antidepressant phenotype without cognitive effects. *Genes Brain Behav* 2012; **11**: 614–622.
- 30 Li YF, Cheng YF, Huang Y, Conti M, Wilson SP, O'Donnell JM *et al*. Phosphodiesterase-4D knock-out and RNA interference-mediated knock-down enhance memory and increase hippocampal neurogenesis via increased cAMP signaling. *J Neurosci* 2011; **31**: 172–183.
- 31 Lipina TV, Wang M, Liu F, Frith JC. Synergistic interactions between PDE4B and GSK-3: DISC1 mutant mice. *Neuropharmacology* 2012; **62**: 1252–1262.
- 32 Pletnikov MV, Ayhan Y, Nikolskaia O, Xu Y, Ovanesov MV, Huang H *et al*. Inducible expression of mutant human DISC1 in mice is associated with brain and behavioral abnormalities reminiscent of schizophrenia. *Mol Psychiatry* 2008; **13**: 173–186115.
- 33 Kuroiwa M, Snyder GL, Shuto T, Fukuda A, Yanagawa Y, Benavides DR *et al*. Phosphodiesterase 4 inhibition enhances the dopamine D1 receptor/PKA/DARPP-32 signaling cascade in frontal cortex. *Psychopharmacology* 2012; **219**: 1065–1079.
- 34 Pogorelov VM, Nomura J, Kim J, Kannan G, Ayhan Y, Yang C *et al*. Mutant DISC1 affects methamphetamine-induced sensitization and conditioned place preference: a comorbidity model. *Neuropharmacology* 2012; **62**: 1242–1251.
- 35 Morris JA, Kandpal G, Ma L, Austin CP. DISC1 (Disrupted-In-Schizophrenia 1) is a centrosome-associated protein that interacts with MAP1A, MIPT3, ATF4/5 and NUDEL: regulation and loss of interaction with mutation. *Hum Mol Genet* 2003; **12**: 1591–1608.
- 36 Sawamura N, Ando T, Maruyama Y, Fujimuro M, Mochizuki H, Honjo K *et al*. Nuclear DISC1 regulates CRE-mediated gene transcription and sleep homeostasis in the fruit fly. *Mol Psychiatry* 2008; **13**: 1138–11481069.
- 37 Malavasi EL, Ogawa F, Porteous DJ, Millar JK. DISC1 variants 37W and 607F disrupt its nuclear targeting and regulatory role in ATF4-mediated transcription. *Hum Mol Genet* 2012; **21**: 2779–2792.
- 38 Ameri K, Harris AL. Activating transcription factor 4. *Int J Biochem Cell Biol* 2008; **40**: 14–21.
- 39 Green TA, Alibhai IN, Unterberg S, Neve RL, Ghose S, Tamminga CA *et al*. Induction of activating transcription factors (ATFs) ATF2, ATF3, and ATF4 in the nucleus accumbens and their regulation of emotional behavior. *J Neurosci* 2008; **28**: 2025–2032.
- 40 Gretarsdottir S, Thorleifsson G, Reynisdottir ST, Manolescu A, Jonsdottir S, Jonsdottir T *et al*. The gene encoding phosphodiesterase 4D confers risk of ischemic stroke. *Nat Genet* 2003; **35**: 131–138.
- 41 MacKenzie KF, Wallace DA, Hill EV, Anthony DF, Henderson DJ, Houslay DM *et al*. Phosphorylation of cAMP-specific PDE4A5 (phosphodiesterase-4A5) by MK2 (MAPKAPK2) attenuates its activation through protein kinase A phosphorylation. *Biochem J* 2011; **435**: 755–769.
- 42 Lynex CN, Li Z, Chen ML, Toh KY, Low RW, Goh DL *et al*. Identification and molecular characterization of a novel PDE4D11 cAMP-specific phosphodiesterase isoform. *Cell Signal* 2008; **20**: 2247–2255.
- 43 Koike H, Arguello PA, Kvajo M, Karayiorgou M, Gogos JA. Disc1 is mutated in the 129S6/SvEv strain and modulates working memory in mice. *Proc Natl Acad Sci USA* 2006; **103**: 3693–3697.
- 44 Frank CL, Ge X, Xie Z, Zhou Y, Tsai LH. Control of activating transcription factor 4 (ATF4) persistence by multisite phosphorylation impacts cell cycle progression and neurogenesis. *J Biol Chem* 2010; **285**: 33324–33337.
- 45 Ho SN, Hunt HD, Horton RM, Pullen JK, Pease LR. Site-directed mutagenesis by overlap extension using the polymerase chain reaction. *Gene* 1989; **77**: 51–59.
- 46 Richter W, Jin SL, Conti M. Splice variants of the cyclic nucleotide phosphodiesterase PDE4D are differentially expressed and regulated in rat tissue. *Biochem J* 2005; **388**(Pt 3): 803–811.
- 47 Giusti-Rodriguez P, Gao J, Graff J, Rei D, Soda T, Tsai LH. Synaptic deficits are rescued in the p25/Cdk5 model of neurodegeneration by the reduction of beta-secretase (BACE1). *J Neurosci* 2011; **31**: 15751–15756.
- 48 Jin SL, Bushnik T, Lan L, Conti M. Subcellular localization of rolipram-sensitive, cAMP-specific phosphodiesterases. Differential targeting and activation of the splicing variants derived from the PDE4D gene. *J Biol Chem* 1998; **273**: 19672–19678.
- 49 Nemoz G, Zhang R, Sette C, Conti M. Identification of cyclic AMP-phosphodiesterase variants from the PDE4D gene expressed in human peripheral mononuclear cells. *FEBS Lett* 1996; **384**: 97–102.
- 50 Barber R, Baillie GS, Bergmann R, Shepherd MC, Sepper R, Houslay MD *et al*. Differential expression of PDE4 cAMP phosphodiesterase isoforms in inflammatory cells of smokers with COPD, smokers without COPD, and nonsmokers. *Am J Physiol Lung Cell Mol Physiol* 2004; **287**: L332–L343.
- 51 Wallace DA, Johnston LA, Huston E, MacMaster D, Houslay TM, Cheung YF *et al*. Identification and characterization of PDE4A11, a novel, widely expressed long isoform encoded by the human PDE4A cAMP phosphodiesterase gene. *Mol Pharmacol* 2005; **67**: 1920–1934.
- 52 Siu F, Bain PJ, LeBlanc-Chaffin R, Chen H, Kilberg MS. ATF4 is a mediator of the nutrient-sensing response pathway that activates the human asparagine synthetase gene. *J Biol Chem* 2002; **277**: 24120–24127.
- 53 Kilberg MS, Shan J, Su N. ATF4-dependent transcription mediates signaling of amino acid limitation. *Trends Endocrinol Metab* 2009; **20**: 436–443.
- 54 Gombart AF, Grewal J, Koeffler HP. ATF4 differentially regulates transcriptional activation of myeloid-specific genes by C/EBPepsilon and C/EBPalpha. *J Leukocyte Biol* 2007; **81**: 1535–1547.
- 55 Lipina TV, Niwa M, Jaaro-Peled H, Fletcher PJ, Seeman P, Sawa A *et al*. Enhanced dopamine function in DISC1-L100P mutant mice: implications for schizophrenia. *Genes Brain Behav* 2010; **9**: 777–789.
- 56 Mehats C, Tanguy G, Dallot E, Cabrol D, Ferre F, Leroy MJ. Is up-regulation of phosphodiesterase 4 activity by PGE2 involved in the desensitization of beta-mimetics in late pregnancy human myometrium? *J Clin Endocrinol Metab* 2001; **86**: 5358–5365.
- 57 Vicini E, Conti M. Characterization of an intronic promoter of a cyclic adenosine 3',5'-monophosphate (cAMP)-specific phosphodiesterase gene that confers hormone and cAMP inducibility. *Mol Endocrinol* 1997; **11**: 839–850.

- 58 Le Jeune IR, Shepherd M, Van Heeke G, Houslay MD, Hall IP. Cyclic AMP-dependent transcriptional up-regulation of phosphodiesterase 4D5 in human airway smooth muscle cells. Identification and characterization of a novel PDE4D5 promoter. *J Biol Chem* 2002; **277**: 35980–35989.
- 59 Eleftheriou F, Ahn JD, Takeda S, Starbuck M, Yang X, Liu X *et al*. Leptin regulation of bone resorption by the sympathetic nervous system and CART. *Nature* 2005; **434**: 514–520.
- 60 Callicott JH, Straub RE, Pezawas L, Egan MF, Mattay VS, Hariri AR *et al*. Variation in DISC1 affects hippocampal structure and function and increases risk for schizophrenia. *Proc Natl Acad Sci USA* 2005; **102**: 8627–8632.
- 61 Arnsten AF. Catecholamine influences on dorsolateral prefrontal cortical networks. *Biol Psychiatry* 2011; **69**: e89–e99.
- 62 Dang LC, O'Neil JP, Jagust WJ. Dopamine supports coupling of attention-related networks. *J Neurosci* 2012; **32**: 9582–9587.
- 63 D'Sa C, Tolbert LM, Conti M, Duman RS. Regulation of cAMP-specific phosphodiesterases type 4B and 4D (PDE4) splice variants by cAMP signaling in primary cortical neurons. *J Neurochem* 2002; **81**: 745–757.
- 64 De Arcangelis V, Liu R, Soto D, Xiang Y. Differential association of phosphodiesterase 4D isoforms with beta2-adrenoceptor in cardiac myocytes. *J Biol Chem* 2009; **284**: 33824–33832.



This work is licensed under a Creative Commons Attribution-NonCommercial-NoDerivs 3.0 Unported License. To view a copy of this license, visit <http://creativecommons.org/licenses/by-nc-nd/3.0/>

Supplementary Information accompanies the paper on the Molecular Psychiatry website (<http://www.nature.com/mp>)