

Biogeochemistry of a low-activity cold seep in the Larsen B area, western Weddell Sea, Antarctica

H. Niemann^{1,2}, D. Fischer³, D. Graffe⁴, K. Knittel¹, A. Montiel⁵, O. Heilmayer^{4,6}, K. Nöthen⁴, T. Pape³, S. Kasten⁴, G. Bohrmann³, A. Boetius^{1,4}, and J. Gutt⁴

¹Max Planck Institute for Marine Microbiology, Bremen, Germany

²Institute for Environmental Geosciences, University of Basel, Basel, Switzerland

³MARUM – Center for Marine Environmental Sciences and Department of Geosciences, Univ. of Bremen, Bremen, Germany

⁴Alfred Wegener Institute for Polar and Marine Research, Bremerhaven, Germany

⁵Universidad de Magallanes, Punta Arenas, Chile

⁶German Aerospace Centre, Bonn, Germany

Received: 29 May 2009 – Published in Biogeosciences Discuss.: 18 June 2009

Revised: 6 October 2009 – Accepted: 7 October 2009 – Published: 2 November 2009

Abstract. First videographic indication of an Antarctic cold seep ecosystem was recently obtained from the collapsed Larsen B ice shelf, western Weddell Sea (Domack et al., 2005). Within the framework of the R/V Polarstern expedition ANTXXIII-8, we revisited this area for geochemical, microbiological and further videographical examinations. During two dives with ROV Cherokee (MARUM, Bremen), several bivalve shell agglomerations of the seep-associated, chemosynthetic clam *Calyptogena* sp. were found in the trough of the Crane and Evans glacier. The absence of living clam specimens indicates that the flux of sulphide and hence the seepage activity is diminished at present. This impression was further substantiated by our geochemical observations. Concentrations of thermogenic methane were moderately elevated with $2\ \mu\text{M}$ in surface sediments of a clam patch, increasing up to $9\ \mu\text{M}$ at a sediment depth of about 1 m in the bottom sections of the sediment cores. This correlated with a moderate decrease in sulphate from about 28 mM at the surface down to 23.4 mM, an increase in sulphide to up to 1.43 mM and elevated rates of the anaerobic oxidation of methane (AOM) of up to $600\ \text{pmol cm}^{-3}\ \text{d}^{-1}$ at about 1 m below the seafloor. Molecular analyses indicate that methanotrophic archaea related to ANME-3 are the most likely candidates mediating AOM in sediments of the Larsen B seep.

1 Introduction

Ocean research of the last decade has provided evidence for a variety of fascinating ecosystems associated with fluid, gas and mud escape structures. These so-called cold seeps are often colonized by thiotrophic bacterial mats, chemosynthetic fauna and associated animals (Jørgensen and Boetius, 2007). Cold seep sediments also harbour diverse microbial populations that degrade hydrocarbons anaerobically along fluid and gas escape pathways. Key agents of the anaerobic oxidation of methane (AOM) with sulphate are consortia of methanotrophic archaea (ANME) and sulphate-reducing bacteria (SRB) (Knittel and Boetius, 2009). These consortia effectively reduce the efflux of methane to the hydrosphere (Hinrichs and Boetius, 2002; Reeburgh, 2007), and are the source for sulphide which fuels the chemosynthetic seep fauna (Jørgensen and Boetius, 2007). So far, three archaeal groups of marine, anaerobic methanotrophs (ANME-1, -2 and -3) related to the methanogenic *Methanosarcinales* and *Methanomicrobiales* were discovered (Hinrichs et al., 1999; Boetius et al., 2000; Orphan et al., 2001, 2002; Knittel et al., 2005; Niemann et al., 2006b; Lösekann et al., 2007). The (presumed) sulphate-reducing partner bacteria are members of the *Desulfosarcina/Desulfococcus* (ANME-1 and -2) or the *Desulfobulbus* branch (ANME-3) of the δ -proteobacteria (Boetius et al., 2000; Orphan et al., 2001; Knittel et al., 2003; Niemann et al., 2006b; Lösekann et al., 2007). In addition to the sulphate-dependent mode of AOM, recent studies demonstrated that alternative oxidants are utilised as terminal electron acceptors during AOM. Denitrifying bacteria of the candidate division “NC10” were found to mediate AOM



Correspondence to: H. Niemann
(helge.niemann@unibas.ch)

with nitrate or nitrite in a bioreactor with sediments from a fresh water canal systems (Raghoebarsing et al., 2006; Et-twig et al., 2008). Also, incubations of cold seep sediments from the Eel River Basin augmented with oxidised iron and manganese showed an increase in AOM activity (Beal et al., 2009).

Cold seep systems were discovered at almost all continental margins, from Arctic to tropical latitudes. No marine cold seep ecosystems were known in Antarctica until the recent discovery of a potential methane seep in the trough of the Evans and Crane glacier in the Larsen B area by Domack and co-workers (2005). After the collapse of the Larsen B ice shelf at the South-Eastern margin of the Antarctic Peninsula in 2002 (Rott et al., 1996; Shepherd et al., 2003; Rack and Rott, 2004), Domack et al. (2005) conducted a video-graphic survey of the seafloor in the now open water embayment of Larsen B in March 2005. At the time of observation, 50 to 70% of the explored seafloor (5540 m²) were covered by some whitish material, which the authors interpreted as sulphide-oxidising microbial mats. Such mats are typical for highly active seeps where AOM leads to high sulphide concentration in near-surface sediment horizons (Boetius et al., 2000; Treude et al., 2003; Niemann et al., 2006b). Furthermore, the video-footage showed features that were interpreted as bubbles emanating from the seafloor and traces of mudflows. The authors also observed aggregations of large bivalve shells, which were most likely extinct populations of vesicomid clams (see Fig. 2d in Domack et al., 2005). Just as the sulphide-oxidising bacterial mats, vesicomid clams are indicative for highly reduced, sulphidic environments, because the known species harbour sulphide-oxidising symbionts in their gills tissue and depend on their chemosynthetic production (Fisher, 1990; Childress and Fisher, 1992; Goffredi and Barry, 2002).

In January 2007, we revisited the Larsen B area for video-graphic and geochemical examinations within the framework of the R/V Polarstern cruise ANTXXIII-8, an expedition contributing to the “Census for Antarctic Marine Life” (Gutt, 2008). To improve the biogeography of deep-water chemosynthetic ecosystems at a global scale, and to understand the processes driving these ecosystems, we aimed at estimating the extent of seep activity in the Larsen B area, and to identify the microbial community as well as megafauna associated with methane seepage and chemosynthetic production.

2 Materials and methods

2.1 Bathymetric mapping and seafloor observations

Bathymetric mapping of the Crane and Evans glacier trough was performed with R/V Polarstern’s multibeam echosounder system Hydrosweep DS2 (Atlas Hydrographic) operated in a 90° aperture angle and 59 hard beam mode.

Recorded raw data were edited with the CARIS HIPS and SIPS and subsequently mapped using the Generic Mapping Tool (GMT) software packages. Visual observations of the seafloor were carried out with the ROV Cherokee (MARUM, University of Bremen) and a video-guided multi grab sampler (Gerdes et al., 1992). The video footage was used to select positions for sediment sampling (photographs as well as metadata to videos recorded can be found in the PANGAEA data base – <http://doi.pangaea.de/10.1594/PANGAEA.702077>).

2.2 Sample collection and storage

Sediment samples were collected with a video-guided multiple corer (MUC) and a gravity corer (GC) at positions of clam beds, the surrounding area within the glacier trough and from a reference station outside the trough (Table 1, Fig. 1). Immediately upon corer retrieval, sediment samples were transferred into a cold room (2°C) and subsampled for concentration measurements of hydrocarbon gases, pore water constituents (sulphate, sulphide), AOM and sulphate reduction (SR) rate measurements and the analysis of microbial diversity. Sediment subsampling for gases and DNA was performed with cut-off syringes (GC and MUC cores) and for AOM and SR rates with glass tubes (GC cores) and acrylic core liners (MUC cores) according to previously described methods (Treude et al., 2003; Niemann et al., 2006a). Pore water was extracted with rhizons connected to syringes through holes drilled into the core liners (Seeberg-Elverfeldt et al., 2005). A vertical sampling resolution of 2 cm was chosen for MUC-cores, and of 10 to 20 cm for GCs. AOM and SR rates were determined from 3 (MUC-cores) or 5 replicated (GCs) incubations, whereas limitations of station time and/or sampling material did not allow to sample replicates for the analyses of pore water constituents, gases and DNA.

2.3 Methane and ethane concentrations

Hydrocarbons were analysed by static headspace gas chromatography according to previously described principles (James and Martin, 1952; Harley et al., 1958; Kolb and Et-tre, 2005). In short, 3 ml of sediment were fixed in 7 ml of saturated NaCl solution in a 20 ml gas-tight sealed glass vial. Shortly after the cruise (<3 month), methane and ethane concentrations were determined from the headspace by gas chromatography and flame ionisation detection. The gas chromatograph (Agilent 6890N) was equipped with an OPTIMA-5 capillary column (5 µm film thickness; 0.32 mm ID, 50 m length) and a split/splitless injector (operated in splitless mode). The carrier gas was helium at a flow rate of 3 ml min⁻¹. Initial oven temperature was set to 45°C held for 4 min, subsequently increased at 15°C min⁻¹ to 155°C, held for 2 min, then raised at 25°C min⁻¹ to 240°C and finally held for 7 min. The chromatography system was calibrated for a concentration range of 1 to 100 µM methane and 0.1

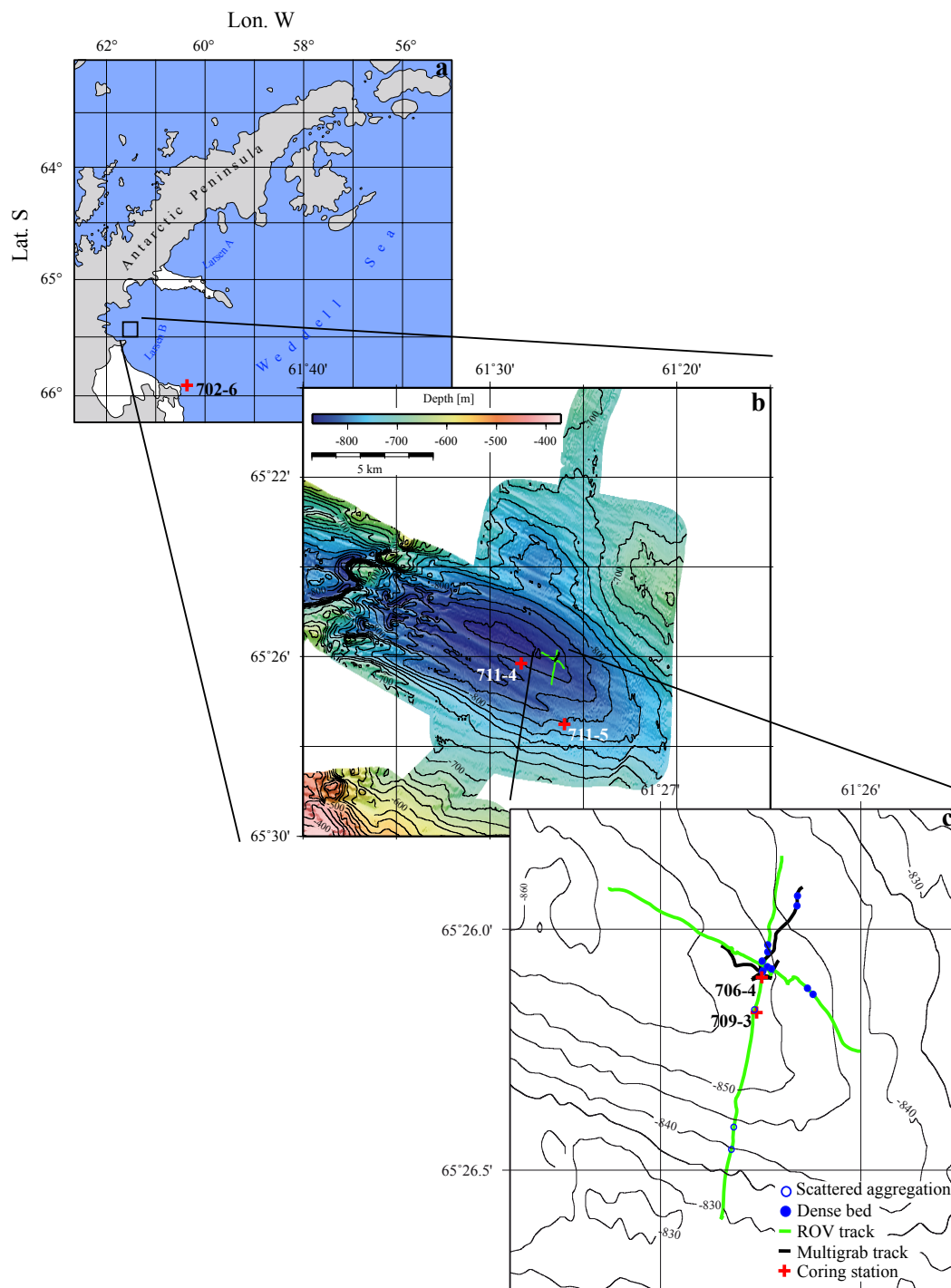


Fig. 1. (a) Geographical map of the Larsen B embayment at the eastern site of the Antarctic Peninsula (permanently ice covered areas are highlighted in white). (b) Bathymetry of the eastern most basin of the Crane and Evans glacier trough. (c) Detailed chart of the videographic survey area. Survey tracks, clam agglomerations and coring stations are indicated.

to $10 \mu\text{M}$ ethane (final concentration in the sediment). Concentrations of hydrocarbons with more than 2 carbon atoms (propane, butane etc.) were below detection/quantification limit.

2.4 Sulphate and sulphide concentrations

Sulphate and sulphide concentrations were analysed according to modified methods from Small et al. (1979) and Fogo

Table 1. Sediment cores recovered during expedition ANTXXIII-8 in the Larsen B area. The analyses conducted for each core are indicated.

Location	Station	Water depth (m)	Date sampled (2007)	Analyses performed		
				Methane, ethane	Sulphate, sulphide	AOM and SR rates
<i>Glacier trough</i>						
MUC (in clam patch)	709-3	852	15 Jan	×	×	×
GC	706-4	850	15 Jan	×	×	×
GC	711-4	841	17 Jan	×		
GC	711-5	794	17 Jan	×		
<i>Reference station</i>						
GC	702-6	429	12 Jan	×	×	

and Popowsky (1949), respectively, as described in detail elsewhere (Grasshoff et al., 1983). Briefly, for sulphate concentration measurements, 0.4 ml of filtered pore water was diluted with MilliQ water (1:50, v/v) and the sample was stored at -20°C till further analysis. Shortly after the cruise (<2 month), sulphate concentrations were determined by ion chromatography (IC) using a Metrosep Anion Dual2 column (4.6×70 mm) in a Metrohm 761 Compact IC equipped with a 732 IC Detector. $\text{Na}_2\text{CO}_3/\text{NaHCO}_3$ (3.2 mM/1 mM, respectively) was used as a solvent at a flow rate of 0.7 ml min^{-1} . For sulphide concentration measurements, 1.5 ml of pore water was fixed in 0.6 ml zinc acetate (ZnAC) solution (20%, w/v) and stored at 4°C till further analysis. According to the Methylene-Blue method, sulphide was determined photometrically at 660 nm using a Kontron Uvikon 922 photometer.

2.5 Ex situ AOM and SR rate measurements

AOM and SR rates were determined by radiotracer incubations using ^{14}C -methane and ^{35}S -sulphate, respectively, as described previously (Jørgensen, 1978; Treude et al., 2003; Niemann et al., 2005). In short, aqueous tracer solutions ($40 \mu\text{l}$ $^{14}\text{CH}_4$, 5 kBq or $5 \mu\text{l}$ $^{35}\text{SO}_4^{2-}$, 40 kBq) were injected into butyl rubber sealed glass tubes (GC core subsamples) or in 1 cm intervals into small push cores (MUC core subsamples). The incubations were carried out for 24 h at 1°C . Subsequently, AOM and SR rate samples were fixed in 25 ml NaOH (2.5%, w/v) and 20 ml ZnAC solution (20%, w/v), respectively. The analyses of radioactive substrates and products were performed as described previously (Fossing and Jørgensen, 1989; Treude et al., 2003). AOM and SR rates were calculated according to the following formulas:

$$\text{AOM} = \frac{^{14}\text{CO}_2}{^{14}\text{CH}_4 + ^{14}\text{CO}_2} \times \frac{[\text{CH}_4]}{t} \quad (1)$$

$$\text{SRR} = \frac{\text{TRI}^{35}\text{S}}{^{35}\text{SO}_4^{2-} + \text{TRI}^{35}\text{S}} \times \frac{[\text{SO}_4^{2-}]}{t} \quad (2)$$

Here, $^{14}\text{CH}_4$, $^{14}\text{CO}_2$, $^{35}\text{SO}_4^{2-}$ and TRI^{35}S are the activities (Bq) of methane, carbon dioxide, sulphate and total reduced inorganic sulphur species, respectively. $[\text{CH}_4]$ is the average methane concentration between the beginning and end of the incubation and $[\text{SO}_4^{2-}]$ is the sulphate concentration at the beginning of the incubation. Concentrations were corrected for porosity. t denotes incubation time. Aerobic methane oxidation (MOx) was determined in the same way as AOM. In both processes, the oxidized ^{14}C -methane is trapped as $^{14}\text{CO}_2$ but the availability of oxygen determines which process occurs (Niemann et al., 2006b).

2.6 DNA extraction and clone library construction

Total DNA was extracted from ca. 30 g of wet sediment recovered from the upper margin of the sulphate-methane transition zone (SMTZ) of core 706-4 (110 cm below seafloor – b.s.f.) according to the method described by Zhou et al. (1996). PCR amplification of 16S rRNA genes, sequencing and phylogenetic analysis of archaeal and bacterial 16S rRNA genes was performed according to previous works (Knittel et al., 2003, 2005). Sequences were checked for chimeras using RDP programme *Chimera Check* (version 2.7) (<http://rdp8.cme.msu.edu/cgis/chimera.cgi?su=SSU>). The sequence data reported here will be published in the EMBL, GenBank and DDBJ nucleotide sequence databases under the accession numbers FN429775 to FN429813.

3 Results and discussion

3.1 Seafloor observations

Two years after the discovery of a potential cold seep habitat in the trough of the Evans and Crane glacier (Domack et al., 2005), we revisited the Larsen B area (Fig. 1a) for further videographic and the first biogeochemical examinations. The bathymetry in the Larsen B embayment was caused by glacier erosion forming a trough in an East-West

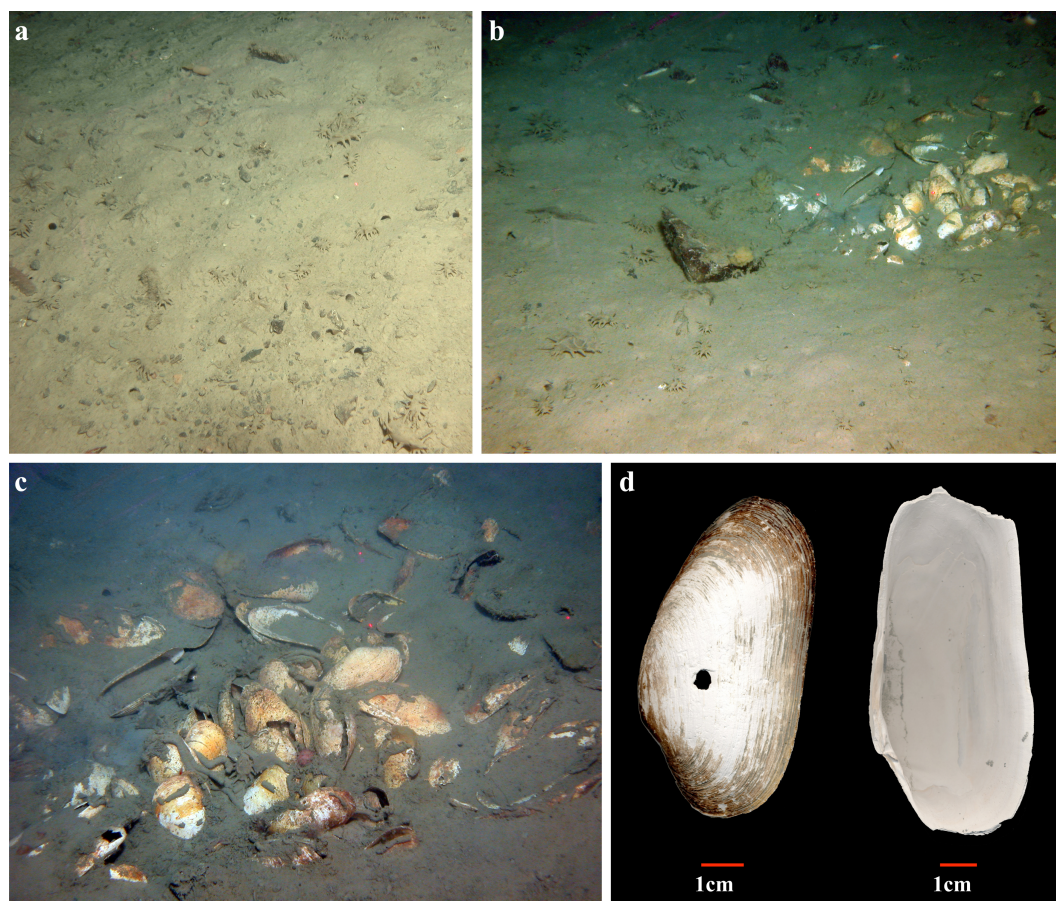


Fig. 2. Images showing (a) the sea floor typically encountered during video surveys in the trough of the Crane and Evans glacier and (b) a dense bed of *Calyptogena* sp. shells at the sea floor. *Elasipod* holothurians and drop stones are visible on images (a) and (b). (c) A close up of the clam bed shows only empty shells. Shell agglomerations were photographed on the South-North transect (Photographs: J. Gutt and W. Dimmler, ©AWI/Marum, University of Bremen). (d) *Calyptogena* sp. shells recovered during R/V Polarstern expedition ANTXXIII-8.

direction with several depressions deeper than 800 m water depth. In the easternmost depression (Fig. 1b), we examined the seafloor during two ROV (stations 706–1, S–N; 706–2, W–E) and multi grab transects (stations 706–3, N–S; 709–6, E–W) (Fig. 1c), of which the South-North ROV transect was previously surveyed with a video sled by Domack et al. (2005) in March 2005. The total area monitored in 2007 was ca. 5500 m² (assuming a 2 m wide field of vision). However, we could not detect any whitish material (putative bacterial mats) in the wider surrounding of the clam shell accumulations. The seafloor was mainly covered by pelagic sediments and phytodetritus, giving the seabed a green-greyish appearance (Fig. 2a). A survey with R/V Polarstern's fisheries echosounder (SimradTM EK60, frequencies: 38, 70, 120, 200 kHz, beam width: 7°, 1–2 kts survey speed, Sauter et al., 2006) could not detect gas bubbles in the water column (data not shown). However, our observations could confirm the presence of bivalve agglomerations of which we found about 10 dense beds and 3 more scattered aggregations of approximately 0.5 m in diameter (Figs. 1c, 2b, c). The bi-

valve shells belonged to the vesicomid clam genus *Calyptogena* and were on average about 8 cm long (Fig. 2d). Living specimens of this chemosynthetic genus provide evidence for sulphidic conditions in near surface sediments (Fisher, 1990; Goffredi and Barry, 2002; Sahling et al., 2002, 2008), which are typically found at active cold seeps. Nevertheless, videographic observations (Fig. 2b, c) and samples recovered with a TV-guided MUC and multigrab only revealed empty shells. *Calyptogena* sp. occurs at seep habitats with low to medium methane fluxes, since it can reach into subseafloor sulphide zones down to 20 cm b.s.f. (Sahling et al., 2005). Living clams tend to accumulate in patches of 0.5–5 m, and are oriented vertically in the sediments (Olu-Le Roy et al., 2007). However, the images from the video survey obtained by Domack et al. (2005) show accumulations of horizontally oriented and therefore most likely dead specimen, so that it remains unknown when sediments were sulphidic enough to support growth of these chemosynthetic bivalves. Furthermore, in 2007, we did not observe any whitish precipitates nor recorded signs of gas ebullition as described by Domack

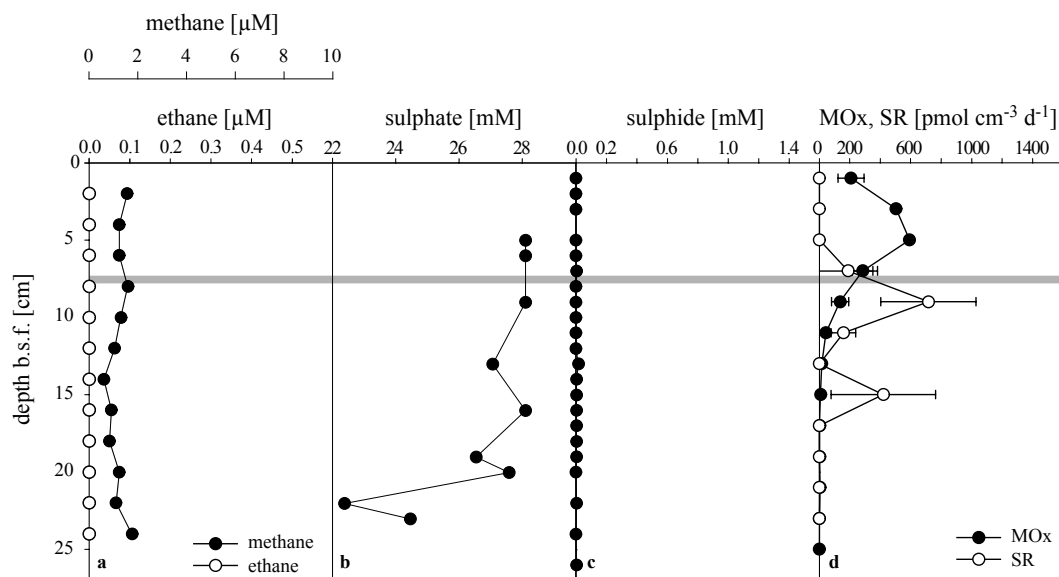


Fig. 3. Concentration profiles of (a) methane and ethane, (b) sulphate, (c) sulphide as well as (d) rates of aerobic methane oxidation (MOx) and sulphate reduction (SR) in sediments of MUC-core 709-3, which was launched directly above a scattered aggregation of clam shells (see Fig. 1c for position). Concentrations of ethane were below detection limit. The oxygen/nitrate penetration depth (grey line) was assumed with 8 cm b.s.f. according to the beige sediment colour of this layer.

et al. (2005). However, due to the limited observation and sampling time in 2005 and 2007, we refrain from further speculations on the distribution of these potential seep indicators.

3.2 Geochemical observations and seep activity

During the expedition ANTXXIII-8, one TV-guided MUC (core 709-3) was launched directly above a scattered aggregation of clams, one GC (core 706-4) was recovered from a position where most dense clam beds had been observed and two GCs were recovered about 1.4 km to the west (core 711-4) and 2.7 km to the south (core 711-5) of the ROV transect intersection, respectively (Table 1, Fig. 1b, c). To compare the geochemical data from these cores (inferred to be associated with methane seepage) to the background biogeochemistry, one additional GC (core 702-6) was recovered from a reference station 73 km to the south-east of the glacier trough (Fig. 1a). Surface sediments within a scattered aggregation of clam shells (core 709-3, Fig. 3a) showed slightly elevated methane concentrations ($<2 \mu\text{M}$) in comparison to background levels ($<1 \mu\text{M}$ throughout core 702-6, Fig. 6a). Furthermore, moderately elevated methane concentrations in sediments deeper than 30 cm b.s.f. were found in the GCs that were recovered from the glacial trough. Highest concentrations were found at the clam shell patches with up to $9.1 \mu\text{M}$ at depth below 95 cm b.s.f. in core 706-4 (Fig. 4a). With distance to the shell aggregations, methane concentrations tended to decrease indicating a decrease in seep activity. In core 711-4, a maximum of $7.5 \mu\text{M}$ was found at

90 cm b.s.f. (Fig. 5a) and only $4 \mu\text{M}$ could be found with depth below 70 cm b.s.f. in core 711-5 (Fig. 5b). In the core with most methane (core 706-4), a moderate decrease in sulphate down to 23.4 mM and an increase of sulphide up to 1.43 mM below 100 cm b.s.f. was measured. Also MUC core 709-3 showed a decrease in sulphate down to 22.4 mM at 22 cm b.s.f. (Fig. 3b). However, sulphide concentrations were not elevated in this core (Fig. 3c). Cold seeps and hydrothermal vents are often characterised by an advective upward flow of chloride-depleted geofluids, which can be traced by a conspicuous decrease in chloride concentrations with sediment depth (von Damm et al., 1995; Schulz and Zabel, 2006; Hensen et al., 2007). Chloride concentrations in core 706-4 were uniform with about 520 mM and only pore waters in the bottom section were slightly depleted with a concentration of 492 mM (data not shown). This indicates that the advection of geofluids is very low and that diffusion is the dominant mass transport mechanism of pore water solutes at Larsen B; at least in the upper metre of sediments. According to Fick's first law of diffusion, the methane, sulphate and sulphide gradients at station 706-4 (0.0003 , 0.1 , $0.04 \mu\text{mol cm}^{-4}$, respectively) together with the diffusion coefficients (193 , 117 , $239 \text{ cm}^2 \text{ yr}^{-1}$, respectively; porosity = 80%, $T=2^\circ\text{C}$; Boudreau, 1997) translate to diffusive fluxes of about 0.4 , 97 and $70 \text{ mmol m}^{-2} \text{ yr}^{-1}$ for methane, sulphate and sulphide, respectively. This already indicates that the methane flux accounts only for a small fraction of the sulphate flux. Similar to absolute methane concentrations, the methane concentration gradients and thus diffusive fluxes decreased with distance to the clam patches

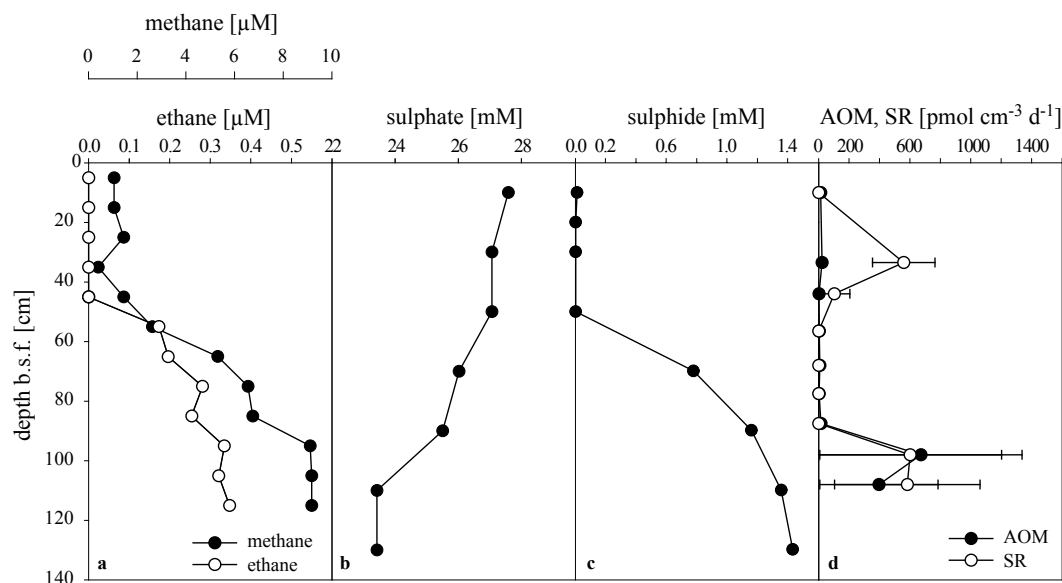


Fig. 4. Concentration profiles of (a) methane and ethane, (b) sulphate, (c) sulphide as well as rates of anaerobic oxidation of methane (AOM) and sulphate reduction (SR) in sediments of gravity core 706-4 which was recovered from a position where many dense beds of clam shells were observed during videographic examinations (see Fig. 1c for position).

(ca. 0.00025 and $0.0001 \mu\text{mol cm}^{-4}$ translating to 0.38 and $0.2 \text{ mmol m}^{-2} \text{ yr}^{-1}$ at station 711-4 and 711-5, respectively) further indicating a decrease in seep activity with distance to the clam patches. Unfortunately, a layer of glacial gravel at about 100 cm b.s.f. prevented the GCs to penetrate deeper into the sea floor. Hence, the cores sampled included only the upper boundary of the SMTZ and fluxes of methane, sulphate and sulphide could be higher in deeper sediment layers.

In contrast to seep-influenced sediments, no apparent geochemical gradients could be detected at the reference station (core 702-6). Here, methane concentrations were uniform and $<1 \mu\text{M}$ (Fig. 6a) and sulphide concentrations were below detection limit (Fig. 6b). Sulphate (Fig. 6b) and chloride concentrations (data not shown) were roughly 28 and 520 mM , respectively, in the lower section of the core (down to 140 cm b.s.f.).

Methane consumption in surface sediments of the clam patch ($600 \text{ pmol cm}^{-3} \text{ d}^{-1}$, core 709-3, Fig. 3d) was not coupled to SR. Although we did not measure oxygen and nitrate concentrations, the beige colour of the upper 8 cm of sediments in core 709-3 indicates the nitrate penetration depth. Accordingly, the oxygen penetration depth was probably a few centimeters above 8 cm b.s.f. Similar oxygen penetration depths have been reported previously from Weddell Sea sediments between 500 and 2000 m water depth (Rutgers Van der Loeff et al., 1990). Hence, the detected methane consumption in surface sediments was most likely due to aerobic oxidation of methane (MOx). Furthermore, elevated rates of SR just beneath the MOx peak in core 709-3 (Fig. 3d) and at 33.5 cm b.s.f. in core 706-4 (Fig. 4d) did not correlate with methane oxidation and were thus probably fuelled by buried

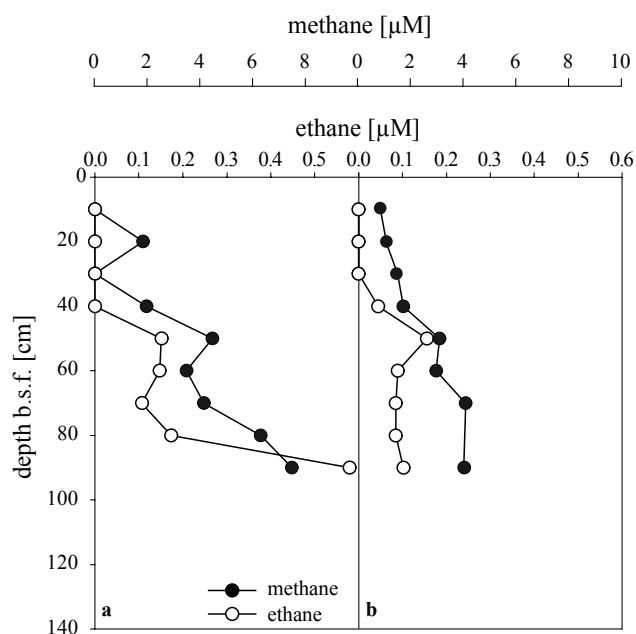


Fig. 5. Concentration profiles of methane and ethane in sediments of the gravity cores 711-4 (a) and 711-5 (b) (see Fig. 1c for positions).

detritus. However, in the bottom section of core 706-4, we could also detect elevated, correlating rates of AOM and SR of about $600 \text{ pmol cm}^{-3} \text{ d}^{-1}$ (Fig. 4d).

The geochemical measurements indicate very low methane fluxes and oxidation rates at the Larsen B cold

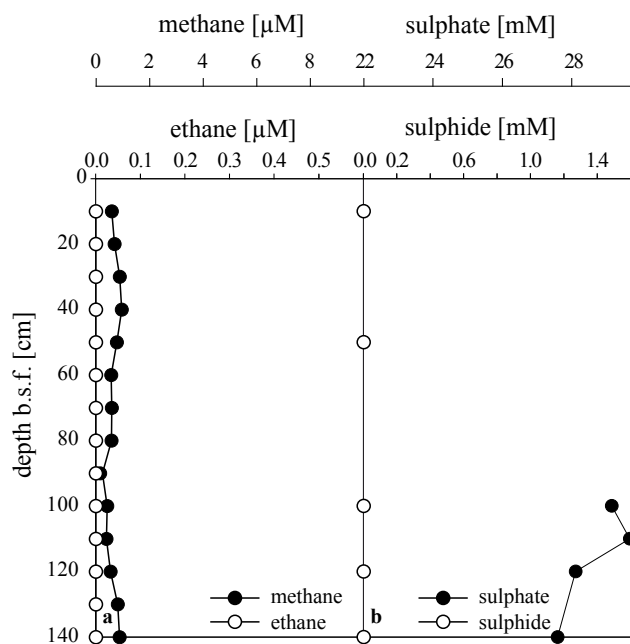


Fig. 6. Concentration profiles of (a) methane and ethane, (b) sulphate and sulphide in sediments of the reference station (core 702-6; see Fig. 1c for position). Sulphate data for depth above 1 m b.s.f. are not available.

seep system, similar to some cold seep systems in the Gulf of Cadiz which do not host thiotrophic mats or chemosynthetic bivalves, but sporadically populations of siboglinid tubeworms (Niemann et al., 2006a). In comparison, methane concentrations in surface sediments at active seeps supporting thiotrophic microbial mats or dense clam populations (e.g., Haakon Mosby Mud Volcano, the Gulf of Mexico, Hydrate Ridge) are in the millimolar range, and sulphate is consumed in the first few centimetres of the sediment, leading to high sulphide concentrations >4 mM (Boetius et al., 2000; Torres et al., 2002; Joye et al., 2004; de Beer et al., 2006; Niemann et al., 2006b). In these systems, the rates of AOM and SR are orders of magnitude higher and may exceed $1 \mu\text{mol cm}^{-3} \text{d}^{-1}$ in surface sediment horizons often amounting to methane, sulphate and sulphide fluxes of some moles $\text{m}^{-2} \text{yr}^{-1}$ (Boetius et al., 2000; Treude et al., 2003; Joye et al., 2004; Niemann et al., 2006b). Yet, the presence of *Calyptogenia* sp. shells provides evidence for a higher seep activity in the past. In sediments below clam shell aggregations, micro to millimolar sulphide concentrations were detected only in sediment horizons below 50 cm b.s.f. (Fig. 4c) and the sulphide flux was about $0.07 \text{ mol m}^{-2} \text{yr}^{-1}$. However, the maximum depth that *Calyptogenia* sp. can reach is 20 cm b.s.f. (Sahling et al., 2005, and references therein), and the lowest sulphide flux supporting *Calyptogenia* sp. found so far is $0.3 \text{ mol m}^{-2} \text{yr}^{-1}$ (Juniper et al., 1992; Grehan and Juniper, 1996; Sahling et al., 2005). Thus, from the time the *Calyptogenia* populations at the Larsen B shelf were alive,

the sulphide front has moved ca. 30 cm deeper into the sediment corresponding to a decrease of the sulphide flux by about 4-fold.

3.3 Origin and composition of light hydrocarbons

In addition to methane, elevated ethane concentrations of up to $0.6 \mu\text{M}$ (core 711-4) were found in deeper sediment horizons (Figs. 4a, 5a, b). Interestingly, ethane and methane concentrations correlated. Comparable to previous findings (Niemann et al., 2006a), this indicates concurrent transport from a single source in the deeper subsurface and subsequent anaerobic consumption of higher hydrocarbons in shallow sediments possibly mediated by SRB (Kniemeyer et al., 2007). Ethane contributed 3.6, 7.2 and 2.5% to the analysed hydrocarbon gases in the bottom sections of cores 706-4, 711-4 and 711-5, respectively. Other gases were not analyzed and/or below detection limit. No ethane was found in sediments of the reference station (Fig. 6a). A distinction of thermogenic and microbial methane is usually based on the source gas composition in combination with their stable isotope ratios ($\delta^{13}\text{C}$, δD) because abiotic and biotic processes influence the molecular and isotopic composition of light hydrocarbons during production, migration and consumption in the seabed (Bernard et al., 1976; James and Burns, 1984; Larter and di Primio, 2005; Stadnitskaia et al., 2006). AOM for instance leads to ethane enrichment relative to methane and a ^{13}C -enrichment of the residual methane (Whiticar, 1999; Hinrichs and Boetius, 2002). Although, we did not sample the gas source, the composition of light hydrocarbons at the Larsen B cold seep shows exceptionally low C_1/C_2 ratios (15 to 29) with $\delta^{13}\text{C}\text{-CH}_4$ values (data not shown) of -32.0‰ V-PDB (110 cm b.s.f.) and -37.6‰ V-PDB (120 cm b.s.f.) in core 706-4. This indicates a thermogenic origin of methane at the study site, but probably also ^{13}C enrichment of the reservoir gas caused by its anaerobic consumption in shallow sediments. A thermogenic origin of light hydrocarbons agrees well with the geological setting of the Larsen B area. The bedrock beneath the trough consists of Mesozoic marine shale, which is a potential source rock for hydrocarbons (Domack et al., 2005). The geological setting of the Larsen B area may even support an abiotic, hydrothermal methane production (Lollar et al., 1993; Foustoukos and Seyfried, 2004). As part of a back arc basin, it is associated with the volcanic arc on the Antarctic Peninsula and a subduction zone in the Drake Passage (Anderson, 1999, and references therein; Hathway, 2000).

3.4 Identity of AOM communities

The composition of the microbial assemblage in the AOM horizon below a clam shell aggregation (core 706-4; 110 cm b.s.f.) was studied by 16S rRNA gene analysis. A total of 118 archaeal and 71 bacterial 16S rRNA gene sequences were analysed (Table 2). In the following, relative

Table 2. Phylogenetic affiliation and frequencies of 16S rRNA gene sequences obtained from sediments of core 706-4 (–110 cm b.s.f., upper margin of SMTZ). Representative clones of each OTU (operational taxonomic unit; 98% sequence similarity) are presented.

Domain	Phylogenetic affiliation	Closest relatives or uncultivated group	No. of clones within OTU	Clone representative	Acc. No.
Archaea	Methanosarcinales	<i>Methanimicrococcus</i> spp.	1	ANTXXIII_706-4 clone Arch200	FN429782
	ANME-3	<i>Methanococcoides</i> spp.	5	ANTXXIII_706-4 clone Arch42	FN429778
	AOM-associated Archaea	no close cultivated relative	31	ANTXXIII_706-4 clone Arch67	FN429785
		no close cultivated relative	1	ANTXXIII_706-4 clone Arch213	FN429776
	Methanomicrobiales	<i>Methanospirillum</i> spp.	64	ANTXXIII_706-4 clone Arch216	FN429777
	Thermoplasmatales	Marine Benthic Group D	2	ANTXXIII_706-4 clone Arch92	FN429779
		no close cultivated relative	10	ANTXXIII_706-4 clone Arch81	FN429780
			2	ANTXXIII_706-4 clone Arch265	FN429783
			1	ANTXXIII_706-4 clone Arch282	FN429784
			1	ANTXXIII_706-4 clone Arch35	FN429781
	Subtotal Archaea		118		
Bacteria	Deltaproteobacteria	<i>Desulfocapsa</i> spp.	17	ANTXXIII_706-4 clone Bac49	FN429775
		<i>Desulfobacterium catecholicum</i>	3	ANTXXIII_706-4 clone Bac76	FN429792
		<i>Desulfosarcina/Desulfococcus</i>			
		Seep-SRB1 cluster	1	ANTXXIII_706-4 clone Bac94	FN429809
		other	2	ANTXXIII_706-4 clone Bac79	FN429793
		<i>Desulfosarcina/Desulfococcus</i>			
			1	ANTXXIII_706-4 clone Bac9	FN429813
		Strain BuS5-affiliated	2	ANTXXIII_706-4 clone Bac3	FN429789
		<i>Desulfobacterium indolicum</i> ,			
		<i>Desulfatirhabdium butyrivorans</i>	2	ANTXXIII_706-4 clone Bac4	FN429797
		<i>Desulfobacterium anilini</i>	1	ANTXXIII_706-4 clone Bac59	FN429796
			1	ANTXXIII_706-4 clone Bac14	FN429786
			1	ANTXXIII_706-4 clone Bac41	FN429798
		<i>Desulfuromonas/Pelobacter</i>	1	ANTXXIII_706-4 clone Bac26	FN429801
		<i>Syntrophus/Smithella</i>	1	ANTXXIII_706-4 clone Bac7	FN429812
			2	ANTXXIII_706-4 clone Bac54	FN429791
			1	ANTXXIII_706-4 clone Bac6	FN429803
			1	ANTXXIII_706-4 clone Bac19	FN429788
			3	ANTXXIII_706-4 clone Bac45	FN429810
		1	ANTXXIII_706-4 clone Bac88	FN429807	
	no close cultivated relative	1	ANTXXIII_706-4 clone Bac88	FN429807	
	Epsilonproteobacteria	<i>Arcobacter</i> spp.	1	ANTXXIII_706-4 clone Bac53	FN429802
	Nitrospina	<i>Nitrospina gracilis</i>	1	ANTXXIII_706-4 clone Bac74	FN429806
	Bacterioidetes – Chlorobium	<i>Chlorobium</i> spp.	1	ANTXXIII_706-4 clone Bac44	FN429794
	Firmicutes	<i>Thermoanaerobacterium</i> spp.	1	ANTXXIII_706-4 clone Bac71	FN429799
		<i>Erysipelothrix</i>	1	ANTXXIII_706-4 clone Bac93	FN429808
		<i>Desulfotomaculum</i> spp.	1	ANTXXIII_706-4 clone Bac61	FN429811
		<i>Desulfosporosinus</i> spp.	1	ANTXXIII_706-4 clone Bac5	FN429795
		no close cultivated relative	1	ANTXXIII_706-4 clone Bac69	FN429805
	Actinobacteria	no close cultivated relative	1	ANTXXIII_706-4 clone Bac69	FN429805
OP3	no close cultivated relative	1	ANTXXIII_706-4 clone Bac64	FN429804	
JS1	no close cultivated relative	15	ANTXXIII_706-4 clone Bac16	FN429787	
OP5	no close cultivated relative	4	ANTXXIII_706-4 clone Bac50	FN429790	
unaffiliated	no close cultivated relative	1	ANTXXIII_706-4 clone Bac1	FN429800	
Subtotal Bacteria		71			

proportions of archaeal and bacterial groups are defined as “% of total archaeal sequences” or “% of total bacterial sequences”. Among the archaeal sequences, 10 OTUs (operational taxonomic unit; 98% sequence similarity) were detected. The largest archaeal clone group (54.2%) was affiliated with uncultivated Methanomicrobiales. Cultivated members of this group are methanogens (Garcia et al., 2006). The second largest group (32.2%) was related to the Methanosarcinales and included sequences of uncultivated archaea related to ANME-3 and other AOM-associated archaea (AAA). Since neither ANME-1 nor ANME-2 sequences could be retrieved, ANME-3 archaea are most likely

the dominant anaerobic methanotrophs at Larsen B. The seep site investigated here is the only AOM habitat described so far where no ANME-1 and ANME-2 sequences were found. Usually, ANME-1 and/or ANME-2 sequences are present in cold seep sediments and comprise the dominant group of anaerobic methanotrophs, while ANME-3 has been detected only rarely in these systems (Knittel et al., 2005; Omeregic et al., 2008, 2009; Knittel and Boetius, 2009; Roussel et al., 2009). So far, only one other cold seep, the Arctic Haakon Mosby Mud Volcano, has been found where ANME-3 is the dominant ANME type (Niemann et al., 2006b; Lösekann et al., 2007). This raises the question whether ANME-3 is best

adapted to the ice-cold temperature conditions of Arctic or Antarctic waters or if additional factors select for this particular group in these environments.

Other potential anaerobic methanotrophs could also be archaea belonging to the AAA cluster (Knittel and Boetius, 2009). This group comprises many sequences from terrestrial and limnic sources, but also from a deep-sea sulphide chimney (Schrenk et al., 2003). However, the biogeochemical functioning of these archaea is not well constrained at present (Ettwig et al., 2008). Sequences of the Thermoplasmatales were also found (13.6%). Their functioning is also unclear, but they have previously been found to co-occur with ANMEs (Hinrichs et al., 1999; Orphan et al., 2001; Inagaki et al., 2004; Girguis et al., 2005; Knittel et al., 2005; Wegener et al., 2008). Interestingly, no Crenarchaeota were found although they are common members of seep communities (Knittel et al., 2005; Lösekann et al., 2007).

The bacterial diversity was higher than the archaeal diversity. 71 sequences could be assigned to 29 OTUs of which 17 belong to the Deltaproteobacteria (57.8%). Interestingly, we could not find the known sulphate reducing partner, *Desulfobulbus*, which forms a consortium with ANME-3 at the Haakon Mosby Mud Volcano (Niemann et al., 2006b; Lösekann et al., 2007). This may indicate that ANME-3 mediates AOM with another partner at the Larsen B seep. Diverse syntrophic partnerships have also been shown for ANME-2 archaea (Pernthaler et al., 2008). However, we cannot exclude undersampling of the bacterial sequences with the applied set of methods. We detected one sequence (1.4%) of the *Desulfosarcina/Desulfococcus* Seep Cluster I, presumably the partner bacteria of ANME-1 and -2, as well as 3 other sequences (4.2%) of the *Desulfosarcina/Desulfococcus* group. Also, clones belonging to *Desulfobacterium indolicum/Desulfatirhabdium butyrativorans* (2.8%) and *Desulfobacterium anilini* (4.2%), which are related to the *Desulfosarcina/Desulfococcus* group were found. The function of these SRB at Larsen B remains speculative but some could be involved in the degradation of higher hydrocarbons. *Desulfobacterium anilini* relatives are known to degrade aromatic hydrocarbons (Widdel, 2009) and one of the clones without a close cultivated relative (clone Bac3) was affiliated with a butane degrading strain (strain BuS5, clone Butane12-GMe, Kniemeyer et al., 2007). The most abundant bacterial sequences (23.9%) were distantly or closely affiliated with *Desulfocapsa* spp. The cultivated species *Desulfocapsa thiozymogenes* and *Desulfocapsa sulfoexigens* grow well by disproportionation of sulphur (in the presence of a sulphide scavenger), thiosulphate and sulphite (Janssen et al., 1996; for a review see Rabus et al., 2006). In addition, *Desulfocapsa thiozymogenes* can grow by reduction of sulphate to sulphide. However, as with the *Desulfosarcina/Desulfococcus* relatives, the functioning of *Desulfocapsa* spp. at Larsen B cannot be determined at present.

Interestingly, a sequence of *Arcobacter* (1.4%) was found in the sediments as well. Typically, these sulphur oxidisers

occur at oxic-anoxic interfaces (Wirsen et al., 2002), but were found below 1 m b.s.f. in the sulphidic zone at our study site (core 706-4). In addition to *Proteobacteria*, several strains of bacteria with unknown biogeochemical functioning but which are commonly encountered at cold seeps and/or hydrothermal vents could be found. These include members of the Firmicutes (5.6%) as well as candidate divisions OP3 (1.4%), OP5 (5.6%) and JS1 (21.1%) (Teske et al., 2002; Knittel et al., 2003; Webster et al., 2007).

4 Conclusions

Based on videographic evidence, it was recently proposed that the former ice shelf area at Larsen B hosts the first cold seep system discovered in Antarctic waters (Domack et al., 2005). During R/V Polarstern cruise ANTXXIII-8, bivalve shells could be sampled and were identified as *Calyptogena* sp., a genus of chemosynthetic bivalves, which typically populates sulphidic sediments associated with intermediate to low methane seepage. However, neither living clam populations, nor thiotrophic bacterial mats or gas ebullition were observed, which indicates a reduction of seepage activity. Biogeochemical analyses of the seabed showed an elevated AOM activity below 1 m depth in the seafloor, and that methane, sulphide and sulphate transport was dominantly diffusive. The methane source for the Larsen B seep is thermogenic (and possibly hydrothermal), based on the hydrocarbon composition containing considerable amounts of ethane, and a stable carbon isotope signature of methane in the range of -32 to -37‰ (V-PDB). The AOM zone hosted members of the ANME-3 clade of anaerobic methanotrophs as well as of a new group of archaea associated mostly with terrestrial AOM, and showed a high diversity of sulphate-reducing bacteria.

Acknowledgements. This study was conducted within the framework of the Research Center/Cluster of Excellence MARUM "The Ocean in the Earth System" (funded by the Deutsche Forschungsgemeinschaft – DFG) as well as the Census of Marine Life projects Census for Antarctic Marine Life (CAML) and Chemosynthetic Ecosystem Science (CHESS). We thank captain, crew and shipboard scientists of R/V Polarstern cruise ANTXXIII-8 for excellent support with work at sea. We thank J.-H. Lott and E. Pugacheva from the Alfred Wegener Institute, Bremerhaven and Vernadsky Institute of Geochemistry and Analytical Chemistry, Moscow, respectively, for bathymetric measurements and georeferencing. Furthermore, we thank W. Dimmler and H. Bohlmann from FIELAX and ISITEC, Bremerhaven, respectively, for ROV maintenance and operation as well as N. Rödiger from the Max Planck Institute for Marine Microbiology, Bremen for molecular analyses. We would also like to express our special thanks to E. Domack from the Hamilton College, New York for providing the coordinates and video footage of seafloor observations made in the Larsen B area during the US Antarctic Program cruise in March 2005. Further support was provided by the Helmholtz Association, Max Planck Society and the University of Bremen.

The service charges for this open access publication have been covered by the Max Planck Society.

Edited by: K. Küsel

References

- Anderson, J. B.: Antarctic Marine Geology, Cambridge University Press, Cambridge, 297 pp., 1999.
- Beal, E. J., House, C. H., and Orphan, V. J.: Manganese- and Iron-Dependent Marine Methane Oxidation, *Science*, 325, 184–187, doi:10.1126/science.1169984, 2009.
- Bernard, B. B., Brooks, J. M., and Sackett, W. M.: Natural gas seepage in the Gulf of Mexico, *Earth Planet. Sci. Lett.*, 31, 48–54, 1976.
- Boetius, A., Ravensschlag, K., Schubert, C., Rickert, D., Widdel, F., Gieseke, A., Amann, R., Jørgensen, B. B., Witte, U., and Pfannkuche, O.: A marine microbial consortium apparently mediating anaerobic oxidation of methane, *Nature*, 407, 623–626, 2000.
- Boudreau, B. P.: Diagenetic models and their implementation: modelling transport and reactions in aquatic sediments, Springer, Berlin, 414 pp., 1997.
- Childress, J. J. and Fisher, C. R.: The Biology of Hydrothermal Vent Animals – Physiology, Biochemistry, and Autotrophic Symbioses, *Oceanogr. Mar. Biol.*, 30, 337–441, 1992.
- de Beer, D., Sauter, E., Niemann, H., Kaul, N., Foucher, J. P., Witte, U., Schlüter, M., and Boetius, A.: In situ fluxes and zonation of microbial activity in surface sediments of the Håkon Mosby Mud Volcano, *Limnol. Oceanogr.*, 51, 1315–1331, 2006.
- Domack, E., Ishman, S., Leventer, A., Sylva, S., Willmott, V., and Huber, B.: Chemotrophic Ecosystem Beneath the Larsen Ice Shelf, *EOS Transactions of the American Geophysical Union*, 86, 269–276, 2005.
- Ettwig, K. F., Shima, S., van de Pas-Schoonen, K. T., Kahnt, J., Medema, M. H., op den Camp, H. J. M., Jetten, M. S. M., and Strous, M.: Denitrifying bacteria anaerobically oxidize methane in the absence of Archaea, *Environ. Microbiol.*, 10, 3164–3173, doi:10.1111/j.1462-2920.2008.01724.x, 2008.
- Fisher, C. R.: Chemoautotrophic and Methanotrophic Symbioses in Marine-Invertebrates, *Rev. Aquat. Sci.*, 2, 399–436, 1990.
- Fogo, J. K. and Popowsky, M.: Spectrophotometric Determination of Hydrogen Sulfide – Methylene Blue Method, *Anal. Chem.*, 21, 732–734, 1949.
- Fossing, H. and Jørgensen, B. B.: Measurement of Bacterial Sulfate Reduction in Sediments – Evaluation of a Single-Step Chromium Reduction Method, *Biogeochemistry*, 8, 205–222, 1989.
- Foustoukos, D. I. and Seyfried Jr., W. E.: Hydrocarbons in Hydrothermal Vent Fluids: The Role of Chromium-Bearing Catalysts, *Science*, 304, 1002–1005, 2004.
- Garcia, J.-L., Olliver, B., and Whitman, W. B.: The Order Methanomicrobiales, in: *The Prokaryotes*, edited by: Dworkin, M., Falkow, S., Rosenberg, E., Schleifer, K. H., and Stackebrandt, E., Springer, 208–230, 2006.
- Gerdes, D., Klages, M., Arntz, W. E., Herman, R. L., Galeron, J., and Hain, S.: Quantitative investigations on macrobenthos communities of the southeastern Weddell Sea shelf based on multi-box corer samples, *Polar Biol.*, 12, 291–301, 1992.
- Girguis, P. R., Cozen, A. E., and DeLong, E. F.: Growth and population dynamics of anaerobic methane-oxidizing archaea and sulfate-reducing bacteria in a continuous-flow bioreactor, *Appl. Environ. Microb.*, 71, 3725–3733, 2005.
- Goffredi, S. K. and Barry, J. P.: Species-specific variation in sulfide physiology between closely related Vesicomylid clams, *Mar. Ecol.-Prog. Ser.*, 225, 227–238, 2002.
- Grasshoff, K., Ehrhardt, M., and Kremling, K.: *Methods of seawater analysis*, 2 ed., Wiley-VCH, Weinheim, 447 pp., 1983.
- Grehan, A. J. and Juniper, S. K.: Clam distribution and subsurface hydrothermal processes at Chowder Hill (Middle Valley), Juan de Fuca Ridge, *Mar. Ecol.-Prog. Ser.*, 130, 105–115, 1996.
- Gutt, J.: The Expedition ANTARKTIS-XXIII/8 of the Research Vessel “Polarstern” in 2006/2007, Reports on Polar and Marine Research, edited by: Riemann, F., Alfred Wegener Institute for Polar and Marine Research, Bremerhaven, 152 pp., 2008.
- Harley, J., Nel, W., and Pretorius, V.: Flame Ionization Detector for Gas Chromatography, *Nature*, 181, 177–178, 1958.
- Hathway, B.: Continental rift to back-arc basin: Jurassic-Cretaceous stratigraphical and structural evolution of the Larsen Basins, Antarctic Peninsula, *J. Geol. Soc. London*, 157, 417–432, 2000.
- Hensen, C., Nuzzo, M., Hornibrook, E., Pinheiro, L. M., Bock, B., Magalhaes, V. H., and Bruckmann, W.: Sources of mud volcano fluids in the Gulf of Cadiz – indications for hydrothermal imprint, *Geochim. Cosmochim. Ac.*, 71, 1232–1248, 2007.
- Hinrichs, K.-U., Hayes, J. M., Sylva, S. P., Brewer, P. G., and DeLong, E. F.: Methane-consuming archaeobacteria in marine sediments, *Nature*, 398, 802–805, 1999.
- Hinrichs, K.-U. and Boetius, A.: The anaerobic oxidation of methane: New insights in microbial ecology and biogeochemistry, in: *Ocean Margin Systems*, edited by: Wefer, G., Billett, D., and Hebbeln, D., Springer Verlag, Berlin-Heidelberg, 457–477, 2002.
- Inagaki, F., Tsunogai, U., Suzuki, M., Kosaka, A., Machiyama, H., Takai, K., Nunoura, T., Nealson, K. H., and Horikoshi, K.: Characterization of C₁-metabolizing prokaryotic communities in methane seep habitats at the Kuroshima Knoll, southern Ryukyu arc, by analyzing *pmoA*, *mmoX*, *mxoF*, *mcrA*, and 16S rRNA genes, *Appl. Environ. Microb.*, 70, 7445–7455, 2004.
- James, A. T. and Martin, A. J. P.: Gas-liquid partition chromatography: the separation and micro-estimation of volatile fatty acids from formic acid to dodecanoic acid, *Biochem. J.*, 50, 679–690, 1952.
- James, A. T. and Burns, B. J.: Microbial alteration of subsurface natural gas accumulations, *AAPG Bull.*, 68, 957–960, 1984.
- Janssen, P. H., Schuhmann, A., Bak, F., and Liesack, W.: Disproportionation of inorganic sulfur compounds by the sulfate-reducing bacterium *Desulfocapsa thiozymogenes* gen nov, sp nov, *Arch. Microbiol.*, 166, 184–192, 1996.
- Jørgensen, B. B.: A comparison of methods for the quantification of bacterial sulphate reduction in coastal marine sediments. I. Measurements with radiotracer techniques, *Geomicrob. J.*, 1, 11–27, 1978.
- Jørgensen, B. B. and Boetius, A.: Feast and famine – microbial life in the deep-sea bed, *Nat. Rev. Microbiol.*, 5, 770–781, 2007.
- Joye, S. B., Boetius, A., Orcutt, B. N., Montoya, J. P., Schulz, H. N., Erickson, M. J., and Lugo, S. K.: The anaerobic oxidation of methane and sulfate reduction in sediments from Gulf of Mexico

- cold seeps, *Chem. Geol.*, 205, 219–238, 2004.
- Juniper, S. K., Tunnicliffe, V., and Southward, E. C.: Hydrothermal Vents in Turbidite Sediments on a Northeast Pacific Spreading Center – Organisms and Substratum at an Ocean Drilling Site, *Can. J. Zool.*, 70, 1792–1809, 1992.
- Kniemeyer, O., Musat, F., Sievert, S. M., Knittel, K., Wilkes, H., Blumenberg, M., Michaelis, W., Classen, A., Bolm, C., Joye, S. B., and Widdel, F.: Anaerobic oxidation of short-chain hydrocarbons by marine sulphate-reducing bacteria, *Nature*, 449, 898–901, 2007.
- Knittel, K., Boetius, A., Lemke, A., Eilers, H., Lochte, K., Pfannkuche, O., Linke, P., and Amann, R.: Activity, distribution, and diversity of sulfate reducers and other bacteria in sediments above gas hydrate (Cascadia margin, Oregon), *Geomicrob. J.*, 20, 269–294, 2003.
- Knittel, K., Lösekann, T., Boetius, A., Kort, R., and Amann, R.: Diversity and distribution of methanotrophic archaea at cold seeps, *Appl. Environ. Microb.*, 71, 467–479, 2005.
- Knittel, K. and Boetius, A.: Anaerobic Oxidation of Methane: Progress with an Unknown Process, *Annu. Rev. Microbiol.*, 63, 311–334, doi:10.1146/annurev.micro.61.080706.093130, 2009.
- Kolb, B. and Ettre, L. S.: *Static Headspace-Gas Chromatography: Theory and Practice*, Wiley-Interscience, New Jersey, 376 pp., 2005.
- Larter, S. and di Primio, R.: Effects of biodegradation on oil and gas field PVT properties and the origin of oil rimmed gas accumulations, *Org. Geochem.*, 36, 299–310, doi:10.1016/j.orggeochem.2004.07.015, 2005.
- Lösekann, T., Knittel, K., Nadalig, T., Fuchs, B., Niemann, H., Boetius, A., and Amann, R.: Diversity and Abundance of Aerobic and Anaerobic Methane Oxidizers at the Haakon Mosby Mud Volcano, Barents Sea, *Appl. Environ. Microb.*, 73, 3348–3362, 2007.
- Lollar, B. S., Frappe, S. K., Weise, S. M., Fritz, P., Macko, S. A., and Welhan, J. A.: Abiogenic Methanogenesis in Crystalline Rocks, *Geochim. Cosmochim. Ac.*, 57, 5087–5097, 1993.
- Niemann, H., Elvert, M., Hovland, M., Orcutt, B., Judd, A., Suck, I., Gutt, J., Joye, S., Damm, E., Finster, K., and Boetius, A.: Methane emission and consumption at a North Sea gas seep (Tommeliten area), *Biogeosciences*, 2, 335–351, 2005, <http://www.biogeosciences.net/2/335/2005/>.
- Niemann, H., Duarte, J., Hensen, C., Omeregíe, E., Magalhaes, V. H., Elvert, M., Pinheiro, L. M., Kopf, A., and Boetius, A.: Microbial methane turnover at mud volcanoes of the Gulf of Cadiz, *Geochim. Cosmochim. Ac.*, 70, 5336–5355, 2006a.
- Niemann, H., Lösekann, T., de Beer, D., Elvert, M., Nadalig, T., Knittel, K., Amann, R., Sauter, E. J., Schlüter, M., Klages, M., Foucher, J. P., and Boetius, A.: Novel microbial communities of the Haakon Mosby mud volcano and their role as a methane sink, *Nature*, 443, 854–858, 2006b.
- Olu-Le Roy, K., Caprais, J. C., Fifis, A., Fabri, M. C., Galeron, J., Budzinsky, H., Le Menach, K., Khripounoff, A., Ondreas, H., and Sibuet, M.: Cold-seep assemblages on a giant pockmark off West Africa: spatial patterns and environmental control, *Mar. Ecol. Evol. Persp.*, 28, 115–130, doi:10.1111/j.1439-0485.2006.00145.x, 2007.
- Omeregíe, E. O., Mastalerz, V., de Lange, G., Straub, K. L., Kappler, A., Roy, H., Stadnitskaia, A., Foucher, J. P., and Boetius, A.: Biogeochemistry and community composition of iron- and sulfur-precipitating microbial mats at the Chefren mud volcano (Nile Deep Sea fan, Eastern Mediterranean), *Appl. Environ. Microb.*, 74, 3198–3215, 2008.
- Omeregíe, E. O., Niemann, H., Mastalerz, V., de Lange, G., Stadnitskaia, A., Mascle, J., Foucher, J. P., and Boetius, A.: Microbial methane oxidation and sulfate reduction at cold seeps of the deep Eastern Mediterranean Sea, *Mar. Geol.*, 261, 114–127, 2009.
- Orphan, V. J., Hinrichs, K. U., Ussler, W., Paull, C. K., Taylor, L. T., Sylva, S. P., Hayes, J. M., and Delong, E. F.: Comparative analysis of methane-oxidizing archaea and sulfate-reducing bacteria in anoxic marine sediments, *Appl. Environ. Microb.*, 67, 1922–1934, 2001.
- Orphan, V. J., House, C. H., Hinrichs, K. U., McKeegan, K. D., and DeLong, E. F.: Multiple archaeal groups mediate methane oxidation in anoxic cold seep sediments, *P. Nat. Acad. Sci. USA.*, 99, 7663–7668, 2002.
- Pernthaler, A., Dekas, A. E., Brown, C. T., Goffredi, S. K., Embaye, T., and Orphan, V. J.: Diverse syntrophic partnerships from-deep-sea methane vents revealed by direct cell capture and metagenomics, *P. Nat. Acad. Sci. USA.*, 105, 7052–7057, doi:10.1073/pnas.0711303105, 2008.
- Rabus, R., Hansen, T. A., and Widdel, F.: *Dissimilatory Sulfate- and Sulfur-Reducing Prokaryotes*, in: *The Prokaryotes*, edited by: Dworkin, M., Falkow, S., Rosenberg, E., Schleifer, K.-H., and Stackebrandt, E., Springer, Berlin, 659–768, 2006.
- Rack, W. and Rott, H.: Pattern of retreat and disintegration of the Larsen B ice shelf, Antarctic Peninsula, *Ann. Glaciol.*, 39, 505–510, 2004.
- Raghoebarsing, A. A., Pol, A., van de Pas-Schoonen, K. T., Smolders, A. J. P., Ettwig, K. F., Rijpstra, W. I. C., Schouten, S., Damste, J. S. S., Op den Camp, H. J. M., Jetten, M. S. M., and Strous, M.: A microbial consortium couples anaerobic methane oxidation to denitrification, *Nature*, 440, 918–921, 2006.
- Reeburgh, W. S.: Oceanic methane biogeochemistry, *Chem. Rev.*, 107, 486–513, 2007.
- Rott, H., Skvarca, P., and Nagler, T.: Rapid collapse of northern Larsen Ice Shelf, Antarctica, *Science*, 271, 788–792, 1996.
- Roussel, E. G., Sauvadet, A. L., Allard, J., Chaduteau, C., Richard, P., Bonavita, M. A. C., and Chaumillon, E.: Archaeal Methane Cycling Communities Associated with Gassy Subsurface Sediments of Marennes-Oleron Bay (France), *Geomicrob. J.*, 26, 31–43, doi:10.1080/01490450802599284, 2009.
- Rutgers Van der Loeff, M. M., Meadows, P. S., and Allen, J. A.: Oxygen in Pore Waters of Deep-Sea Sediments, *Philos. T. Roy. Soc. A*, 331, 69–84, 1990.
- Sahling, H., Rickert, D., Lee, R. W., Linke, P., and Suess, E.: Macrofaunal community structure and sulfide flux at gas hydrate deposits from the Cascadia convergent margin, NE Pacific, *Mar. Ecol.-Prog. Ser.*, 231, 121–138, 2002.
- Sahling, H., Wallmann, K., Dählmann, A., Schmaljohann, R., and Petersen, S.: The physicochemical habitat of *Sclerolinum* sp at Hook Ridge hydrothermal vent, Bransfield Strait, Antarctica, *Limnol. Oceanogr.*, 50, 598–606, 2005.
- Sahling, H., Bohrmann, G., Spiess, V., Bialas, J., Breitzke, M., Ivanov, M., Kasten, S., Krastel, S., and Schneider, R. R.: Pockmarks in the northern Congo Fan area, SW Africa: Complex seafloor features shaped by fluid flow, *Mar. Geol.*, 249, 206–225, 2008.
- Sauter, E. J., Muyakshin, S. I., Charlou, J. L., Schlüter, M., Boetius,

- A., Jerosch, K., Damm, E., Foucher, J. P., and Klages, M.: Methane discharge from a deep-sea submarine mud volcano into the upper water column by gas hydrate-coated methane bubbles, *Earth Planet. Sci. Lett.*, 243, 354–365, 2006.
- Schrenk, M. O., Kelley, D. S., Delaney, J. R., and Baross, J. A.: Incidence and diversity of microorganisms within the walls of an active deep-sea sulfide chimney, *Appl. Environ. Microb.*, 69, 3580–3592, 2003.
- Schulz, H. and Zabel, M.: *Marine Geochemistry*, 2 ed., Springer, 574 pp., 2006.
- Seeberg-Elverfeldt, J., Schlüter, M., Feseker, T., and Kölling, M.: Rhizon sampling of porewaters near the sediment-water interface of aquatic systems, *Limnol. Oceanogr.-Meth.*, 3, 361–371, 2005.
- Shepherd, A., Wingham, D., Payne, T., and Skvarca, P.: Larsen ice shelf has progressively thinned, *Science*, 302, 856–859, 2003.
- Small, H., Stevens, T. S., and Bauman, W. C.: Novel Ion-Exchange Chromatographic Method Using Conductimetric Detection, *Anal. Chem.*, 47, 1801–1809, 1975.
- Stadnitskaia, A., Ivanov, M. K., Blinova, V., Kreulen, R., and van Weering, T. C. E.: Molecular and carbon isotopic variability of hydrocarbon gases from mud volcanoes in the Gulf of Cadiz, NE Atlantic, *Mar. Petrol. Geol.*, 23, 281–296, 2006.
- Teske, A., Hinrichs, K. U., Edgcomb, V., Gomez, A. D., Kysela, D., Sylva, S. P., Sogin, M. L., and Jannasch, H. W.: Microbial diversity of hydrothermal sediments in the Guaymas Basin: Evidence for anaerobic methanotrophic communities, *Appl. Environ. Microb.*, 68, 1994–2007, 2002.
- Torres, M. E., McManus, J., Hammond, D. E., de Angelis, M. A., Heeschen, K. U., Colbert, S. L., Tryon, M. D., Brown, K. M., and Suess, E.: Fluid and chemical fluxes in and out of sediments hosting methane hydrate deposits on Hydrate Ridge, OR, I: Hydrological provinces, *Earth Planet. Sci. Lett.*, 201, 525–540, 2002.
- Treude, T., Boetius, A., Knittel, K., Wallmann, K., and Jørgensen, B. B.: Anaerobic oxidation of methane above gas hydrates at Hydrate Ridge, NE Pacific Ocean, *Mar. Ecol.-Prog. Ser.*, 264, 1–14, 2003.
- von Damm, K. L., Oosting, S. E., Kozłowski, R., Buttermore, L. G., Colodner, D. C., Edmonds, H. N., Edmond, J. M., and Grebmeier, J. M.: Evolution of East Pacific Rise hydrothermal vent fluids following a volcanic eruption, *Nature*, 375, 47–50, 1995.
- Webster, G., Yarram, L., Freese, E., Köster, J., Sass, H., Parkes, R. J., and Weightman, A. J.: Distribution of candidate division JS1 and other *Bacteria* in tidal sediments of the German Wadden Sea using targeted 16S rRNA gene PCR-DGGE, *FEMS Microbiol. Ecol.*, 62, 78–89, 2007.
- Wegener, G., Shovitri, M., Knittel, K., Niemann, H., Hovland, M., and Boetius, A.: Biogeochemical processes and microbial diversity of the Gullfaks and Tommeliten methane seeps (Northern North Sea), *Biogeosciences*, 5, 1127–1144, 2008, <http://www.biogeosciences.net/5/1127/2008/>.
- Whiticar, M. J.: Carbon and hydrogen isotope systematics of bacterial formation and oxidation of methane, *Chem. Geol.*, 161, 291–314, 1999.
- Widdel, F.: Anaerobic hydrocarbon-degrading microorganisms – an overview., in: *Handbook of Hydrocarbon and Lipid Microbiology*, edited by: Timmis, K. N., Springer Verlag, Berlin, in press, 2009.
- Wirsen, C. O., Sievert, S. M., Cavanaugh, C. M., Molyneux, S. J., Ahmad, A., Taylor, L. T., DeLong, E. F., and Taylor, C. D.: Characterization of an Autotrophic Sulfide-Oxidizing Marine Arcobacter sp. That Produces Filamentous Sulfur, *Appl. Environ. Microb.*, 68, 316–325, doi:10.1128/aem.68.1.316-325.2002, 2002.
- Zhou, J. Z., Bruns, M. A., and Tiedje, J. M.: DNA recovery from soils of diverse composition, *Appl. Environ. Microb.*, 62, 316–322, 1996.