

SCIENTIFIC PUBLICATIONS OF THE AMERICAN MUSEUM OF NATURAL HISTORY

AMERICAN MUSEUM NOVITATES

BULLETIN OF THE AMERICAN MUSEUM OF NATURAL HISTORY

ANTHROPOLOGICAL PAPERS OF THE AMERICAN MUSEUM OF NATURAL HISTORY

PUBLICATIONS COMMITTEE

ROBERT S. VOSS, CHAIR

BOARD OF EDITORS

JIN MENG, PALEONTOLOGY

LORENZO PRENDINI, INVERTEBRATE ZOOLOGY

ROBERT S. VOSS, VERTEBRATE ZOOLOGY

CHARLES S. SPENCER, ANTHROPOLOGY

MANAGING EDITOR

MARY KNIGHT

Submission procedures can be found at <http://research.amnh.org/scipubs>

Complete lists of all issues of *Novitates* and *Bulletin* are available on the web (<http://library.amnh.org/pubs>). Inquire about ordering printed copies via e-mail from [scipubs@amnh.org](mailto:scipubs@amnh.org) or via standard mail from:

American Museum of Natural History—Scientific Publications,  
Central Park West at 79th St.,  
New York, NY 10024.  
Tel: (212) 769-5545. Fax: (212) 769-5009.

⊗ This paper meets the requirements of ANSI/NISO Z39.48-1992 (permanence of paper).

ON THE COVER: *ESCAPHIELLA GIGANTEA*, N. SP., FROM COLOMBIA, FEMALE, OBLIQUE LATERAL VIEW; ALTHOUGH MOST *ESCAPHIELLA* SPECIES ARE ORANGE, THIS SPECIES AND THE SIMILARLY ENLARGED *ESCAPHIELLA MAGNA*, N. SP., FROM MEXICO, ARE QUITE RED.

PLATNICK & DUPÉRRÉ: *ESCAPHIELLA*, NEW GENUS OF GOBLIN SPIDERS

AMNH BULLETIN 328

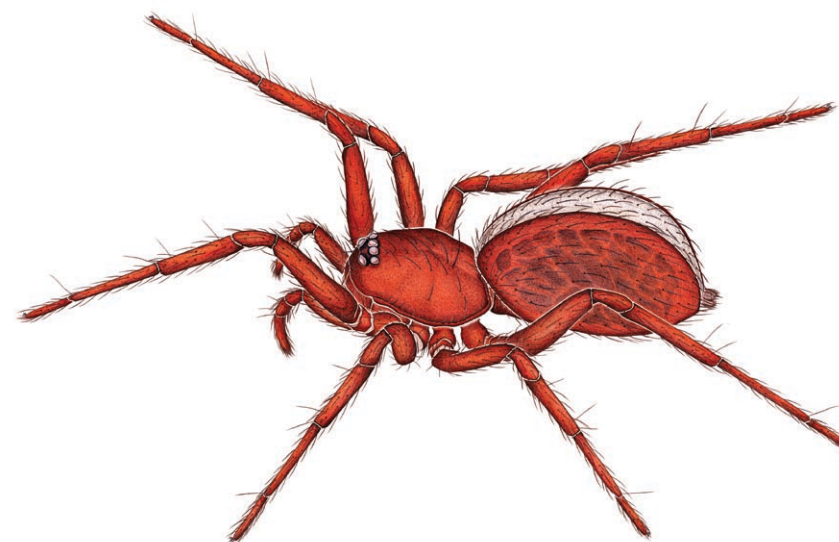
2009

---

THE AMERICAN GOBLIN SPIDERS OF THE  
NEW GENUS *ESCAPHIELLA*  
(ARANEAE, OONOPIDAE)

---

NORMAN I. PLATNICK AND NADINE DUPÉRRÉ



BULLETIN OF THE AMERICAN MUSEUM OF NATURAL HISTORY